

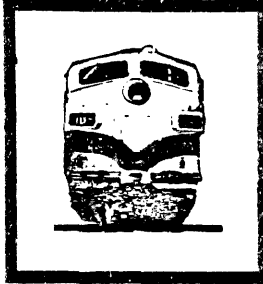
Doc  
NTSB  
AMM  
78  
07



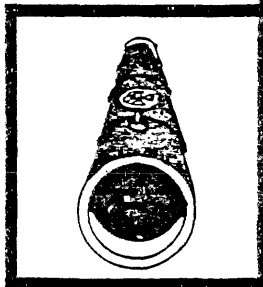
# NATIONAL TRANSPORTATION SAFETY BOARD

WASHINGTON, D.C. 20594

R. A. U. LIBRARY



BRIEFS OF ACCIDENTS  
INVOLVING  
MISSING AND MISSING LATER  
RECOVERED AIRCRAFT



U. S. GENERAL AVIATION  
1976

REPORT NUMBER: NTSB-AMM-78-7

OC  
TSB  
MM



UNITED STATES GOVERNMENT

MMA  
7-87

TECHNICAL REPORT DOCUMENTATION PAGE

1. Report No. NTSB-AMM-78-7	2. Government Accession No.	3. Recipient's Catalog No.	
4. Title and Subtitle Briefs of Accidents Involving Missing and Missing Later Recovered Aircraft, U.S. General Aviation, 1976		5. Report Date April 13, 1978	
		6. Performing Organization Code	
7. Author(s)		8. Performing Organization Report No.	
9. Performing Organization Name and Address Bureau of Technology National Transportation Safety Board Washington, D.C. 20594		10. Work Unit No. 2325	
		11. Contract or Grant No.	
		13. Type of Report and Period Covered Accident Reports in Brief Format-U.S. General Aviation Missing and Missing Later Recovered Aircraft, 1976	
12. Sponsoring Agency Name and Address  NATIONAL TRANSPORTATION SAFETY BOARD Washington, D. C. 20594		14. Sponsoring Agency Code	
15. Supplementary Notes			
16. Abstract  This publication contains reports of U.S. general aviation missing and missing later recovered accidents occurring in 1976. Included are 87 accident Briefs, 11 of which cover missing aircraft not recovered and 76 missing later recovered. The brief format presents the facts, conditions, circumstances, and probable cause(s) for each accident. Additional statistical information is tabulated by type of accident, phase of operation, injury index, aircraft damage, pilot certificate, injuries and causal factor(s). This publication will be published annually.			
17. Key Words Aviation accidents, <u>missing aircraft</u> , missing later recovered aircraft, U.S. general aviation, probable cause, type of accident, phase of operation, kind of flying, aircraft damage, injuries, pilot data.		18. Distribution Statement This document is available to the public through the National Technical Information Service, Springfield, Virginia 22151	
19. Security Classification (of this report) UNCLASSIFIED	20. Security Classification (of this page) UNCLASSIFIED	21. No. of Pages 91	22. Price



## FOREWORD

This report contains U.S. General Aviation missing and missing later recovered accident Briefs arranged in state and date order. In addition, this publication includes several statistical tables which tabulate and summarize selected accident information, such as type of accident, phase of operation, injuries, cause/factors and pilot certificate.

In 1976, 87 U.S. General Aviation flights were reported missing, 11 of these remain missing to date. In the same time period, the U.S. General Aviation fleet compiled 36,127,631 flying hours, resulting in a missing aircraft rate per 100,000 hours of 0.03 and missing later recovered rate per 100,000 of 0.21.

The enclosed computer briefs are the reports of the National Transportation Safety Board and thereby subject to the limitations of 49 USC 1441(e) which states:

"No part of any report or reports of the Board, relating to any accident or the investigation thereof, shall be admitted as evidence or used in any suit or action for damages growing out of any matter mentioned in such report or reports."

In reading these reports, it should be borne in mind that they are produced directly from coded records on magnetic tape by electronic data processing equipment. Also, in reading the text, it must be borne in mind that computer language is utilized, thus requiring a number of abbreviations due to spacing limitations. Caution should be exercised in reading the Briefs of Accidents, especially those containing abbreviations in phrases and sentences.

Collisions between aircraft are treated as one accident. A coded analysis is done on each aircraft involved in a collision. This produces two aircraft accident records per accident. Consequently, when compiling information on accidents involving collisions between aircraft, the number of accident records will exceed the number of accidents.

The Briefs of Accidents contain the essential information which fulfill most requirements of persons using these reports. However, for those having a need for more detailed information, the original factual reports are on file in the Washington Office of the National Transportation Safety Board. Upon request, these reports will be reproduced commercially for a fee to cover reproduction and postage. The cost will be assessed per printed page and photograph(s) reproduced.

Copies of material ordered will be mailed from the Washington business firm that holds the current contract for commercial reproduction of the Board's public files. Billing is also direct to you by the same company.

Orders for this material will also involve a user service charge by the Board for special services. This charge is in addition to the cost of commercial reproduction of material and will be included in the bill from the commercial reproduction firm.

Requests for reproduction should be forwarded to the:

NATIONAL TRANSPORTATION SAFETY BOARD  
Public Inquiries Section (AD-46)  
Washington, D.C. 20594

## EXPLANATORY NOTES

### U.S. GENERAL AVIATION

U.S. general aviation refers to the operations of U.S. civil aircraft owned and operated by persons, businesses, corporations, etc., excluding the operations of U.S. air carriers.

### U.S. AIR CARRIER

U.S. air carrier operations include the following three operational categories: 1) certificated route air carriers 2) supplemental air carriers and 3) commercial operators of large aircraft.

### DEFINITIONS

The following definitions contained in CFR 49, Part 830, paragraph 830.2 apply when used in this publication.

#### Aircraft Accident

An occurrence associated with the operation of an aircraft which takes place between the time any person boards the aircraft with the intention of flight until such time as all such persons have disembarked, and in which any person suffers death or serious injury as a result of being in or upon the aircraft or by direct contact with the aircraft or anything attached thereto, or in which the aircraft receives substantial damage.

#### Fatal Injury

Any injury which results in death within 7 days of the accident.

#### Serious Injury

Any injury which 1) requires hospitalization for more than 48 hours, commencing within 7 days from the date the injury was received; 2) results in a fracture of any bone (except simple fractures of fingers, toes, or nose); 3) involves lacerations which cause severe hemorrhages, nerve, muscle, or tendon damage; 4) involves injury to any internal organ; or 5) involves second- or third-degree burns, or any burns affecting more than 5 percent of the body surface.

#### Substantial Damage

1) Except as provided in subparagraph (2) of this paragraph, substantial damage means damage or structural failure which adversely affects the structural strength, performance, or flight characteristics of the aircraft, and which would normally require major repair or replacement of the affected component.  
2) Engine failure, damage limited to an engine, bent fairings or cowling, dented skin, small punctured holes in the skin or fabric, ground damage to rotor or propeller blades, damage to landing gear, wheels, tires, flaps, engine accessories, brakes, or wingtips are not considered "substantial damage" for the purpose of this part.

## EXPLANATORY NOTES

### INJURY INDEX

Injury index refers to the highest degree of personal injury sustained as a result of the accident.

### TYPE OF ACCIDENT

Type of accident relates to the immediate circumstances of the occurrence. Many accidents involve a series of circumstances and therefore require a second type to more fully describe the sequence of events. Some examples of types of accidents are as follows:

#### Gear Collapsed

Collapse of the landing gear due to mechanical failure other than malfunction of the retracting mechanism.

#### Gear Retracted

Retraction of the landing gear due to malfunction or failure of the retracting mechanism or to inadvertent retraction by the crew. Excludes intentional gear retraction and wheels-up landing.

#### Airframe Failure

Occurrences resulting from failure of any part of the airframe while in flight or in motion on the ground. Excludes failure resulting from contact with another airplane or object, or impact with the ground, or damage from landing gear collapse or retraction.

#### Engine Failure/Malfunction

Occurrences of engine failure or malfunction for any reason. Includes engine stoppage, power interruption, or power loss, actual or simulated.

### PHASE OF OPERATION

The phase of operation relates to the particular segment of the flight or operation during which the circumstances of the accident occur.

### KIND OF FLYING

Refers to the purpose for which the aircraft is being operated at the time of the accident. There are four broad categories of kind of flying.

#### 1. Instructional Flying

Refers to flying accomplished in supervised training under the direction of an accredited instructor.



## EXPLANATORY NOTES

### KIND OF FLYING

#### 2. Noncommercial Flying

Refers to the use of an aircraft for purposes of pleasure, personal transportation or in connection with a private business, in corporate/executive operations, and in other operations, wherein there is no direct monetary fee charged. It includes the following categories.

##### Pleasure

Flying by individuals in their own or rented aircraft for pleasure, or personal transportation not in furtherance of their occupation or company business.

##### Business

The use of aircraft by pilots (not receiving direct salary or compensation for piloting) in connection with their occupation or in the furtherance of a private business.

##### Corporate/Executive Operations

The use of aircraft owned or leased, and operated by a corporation or business firm for the transportation of personnel or cargo in furtherance of the corporation's or firm's business, and which are flown by professional pilots receiving a direct salary or compensation for piloting.

#### 3. Commercial Flying

Commercial flying includes all general aviation flying normally conducted for direct financial return, except instructional flying. It includes air taxi operations, aerial application, fire control, aerial mapping or photography, aerial advertising, power/pipeline patrol and fish spotting.

#### 4. Miscellaneous Flying

Includes other kinds of flying not covered under the other three broad categories. In some instances the criterion of direct financial return may or may not be present.

### COLLISION BETWEEN AIRCRAFT

Collisions between aircraft are so classified only when both aircraft are occupied. This includes collisions wherein both aircraft are airborne (midair); one is airborne, the other on the ground; and both are on the ground. A collision with a parked, unoccupied aircraft is classified under the broad category of collision with objects (parked, unoccupied aircraft).

## EXPLANATORY NOTES

### CAUSES AND RELATED FACTORS

In determining probable cause(s) of an accident, all facts, conditions, and circumstances are considered. The object is to ascertain those cause-effect relationships in the accident sequence about which something can be done to prevent recurrence of the type of accident under consideration. Accordingly, for statistical purposes where two or more causes exist in an accident, each is recorded and no attempt is made to establish a primary cause. Therefore, in the Cause and Related Factor Table, the figures shown in the columns dealing with Cause will exceed the total number of accidents. The term Factor is used, in general, to denote those elements of an accident which further explain or supplement the probable cause(s). This provision was incorporated in the coding system to increase its flexibility and to provide a means for collecting essential items of information which could not be categorized elsewhere in the system.

### AIRCRAFT WEIGHT CATEGORIES

The International Civil Aviation Organization's categories of aircraft weight are utilized to classify accident data as follows:

0 -	2,250 kilograms	(0 -	4,960 pounds)
2,251 -	5,700 kilograms	(4,961 -	12,565 pounds)
5,701 -	27,000 kilograms	(12,566 -	59,525 pounds)
27,001 -	272,000 kilograms	(59,526 -	599,650 pounds)
272,001 -	kilograms and greater	(599,651 pounds and greater)	

### SMALL FIXED-WING AIRCRAFT

Fixed-wing aircraft which have a maximum gross takeoff weight of 5700 kilograms (12,565 pounds), or less.

### LARGE FIXED-WING AIRCRAFT

Fixed-Wing aircraft which have a maximum takeoff weight greater than 5,700 kilograms (12,565 pounds).

### ROTORCRAFT

Aircraft which in all usual flight attitudes are supported in the air wholly or in part by a rotor or rotors; i.e., by airfoils rotating or revolving about an axis.

### TYPES OF WEATHER CONDITIONS

The types of weather conditions (VFR/IFR) are determined in accordance with the prescribed minima in Part 91 of the Federal Aviation Regulations. These minima pertain to the ceiling and visibility, in conjunction with the type of airspace, at the accident site. Type of weather conditions are based on surface weather as determined from officially recognized sources. Weather conditions encountered in flight are not necessarily representative of the classifications VFR/IFR as carried under Type of Weather Conditions.

LIST OF ABBREVIATIONS USED IN BRIEFS

AERIAL ADVERTISE	AERIAL ADVERTISING
ATR, FLIGHT INSTR.	AIRLINE TRANSPORT INSTRUCTOR
AIR SHOW/RACING	AIR SHOW/AIR RACING
AIR TAXI-CARGO	AIR TAXI-CARGO OPERATIONS
AIR TAXI-PASSG	AIR TAXI-PASSENGER OPERATIONS
APPROACH CTL-DEPARTURE	APPROACH CONTROL-DEPARTURE
APR CTL-TOW ENRT CTL SRV	APPROACH CONTROL-TOWER EN ROUTE CONTROL SERVICE
ASSOC CROP CTL ACTIVITIES	ASSOCIATED CROP CONTROL ACTIVITIES
ASSOC FIRE CTL ACTIVITIES	ASSOCIATED FIRE CONTROL ACTIVITIES
COMMERCIAL, FLIGHT. INSTR	COMMERCIAL FLIGHT INSTRUCTOR
CORP/EXEC	CORPORATION/EXECUTIVE
CR-	CREW
CTR CARGO-D	CONTRACT/CHARTER-CARGO-DOMESTIC
CTR CARGO-I	CONTRACT/CHARTER-CARGO-INTERNATIONAL
CTR PASSG-D	CONTRACT/CHARTER-PASSENGER-DOMESTIC
CTR PASSG-I	CONTRACT/CHARTER-PASSENGER-INTERNATIONAL
LAST ENROUTE STOP	LAST PLANNED EN ROUTE LANDING POINT
MAPPING/PHOTO	AERIAL MAPPING/PHOTOGRAPHY
MIL CONTRACT CARGO INTL	MILITARY CONTRACT-CARGO-INTERNATIONAL
MIL CONTRACT PASSG INTL	MILITARY CONTRACT-PASSENGER-INTERNATIONAL
MILITARY CTR CARGO DOM	MILITARY CONTRACT-CARGO-DOMESTIC
MILITARY CTR PASSG DOM	MILITARY CONTRACT-PASSENGER-DOMESTIC
MIL/CTR CARGO	MILITARY CONTRACT-CARGO
MIL/CTR PASSG	MILITARY CONTRACT-PASSENGER
NR.	NEAR
NS CTR CARGO	NONSCHEDULED/CHARTER REVENUE CARGO-INTRA-STATE
NS CTR PASSG	NONSCHEDULED/CHARTER REVENUE PASSENGER-INTRA-STATE
NS CTR REVENUE CARGO DOM	NONSCHEDULED/CHARTER REVENUE CARGO-DOMESTIC
NS CTR REVENUE CARGO INTL	NONSCHEDULED/CHARTER REVENUE CARGO-INTERNATIONAL
NS CTR REVENUE PASSG DOM	NONSCHEDULED/CHARTER REVENUE PASSENGER-DOMESTIC
NS CTR REVENUE PASSG INTL	NONSCHEDULED/CHARTER REVENUE PASSENGER-INTERNATL
OT-	OTHER AIRCRAFT AND GROUND
PARAJUMP	PARACHUTE JUMP
PRIVATE, FL. INST. R.	PRIVATE FLIGHT INSTRUCTOR
PX-	PASSENGERS
RADAR CTL/SURVEILLANCE	RADAR CONTROL/SURVEILLANCE
SCHED CARGO SRV	SCHEDULED CARGO SERVICE
SCHED DOM PASSG SRV	SCHEDULED DOMESTIC CARGO SERVICE
SCHED DOM CARGO SRV	SCHEDULED DOMESTIC PASSENGER SERVICE
SCHED INTERNATL CARGO SRV	SCHEDULED INTERNATIONAL CARGO SERVICE
SCHED INTERNATL PASSG SRV	SCHEDULED INTERNATIONAL PASSENGER SERVICE
SCHED PASSG SRV	SCHEDULED PASSENGER SERVICE
S-D	SCHEDULED DOMESTIC
S-I	SCHEDULED INTERNATIONAL
UNK/NR	UNKNOWN/NOT REPORTED



INJURIES, ACCIDENTS  
 U.S. GENERAL AVIATION  
ACCIDENTS INVOLVING MISSING AND MISSING LATER RECOVERED AIRCRAFT

1976

	INJURIES					TOTAL
	FATAL	SERIOUS	MINOR	NONE	UNKNOWN	
PILOT	79	5	1	2		87
COPILOT	5					5
DUAL STUDENT	1					1
CHECK PILOT						
FLIGHT ENGINEER						
NAVIGATOR						
CABIN ATTENDANT						
EXTRA CREW						
PASSENGERS	90	9	1	2		102
TOTAL	175	14	2	4	ABOARD	195
OTHER AIRCRAFT						
OTHER GROUND						
GRAND TOTAL	175	14	2	4		195
INVOLVES	87	TOTAL ACCIDENTS				
INVOLVES	81	FATAL ACCIDENTS				

INJURIES, ACCIDENTS  
 U.S. GENERAL AVIATION  
AIRCRAFT INITIALLY REPORTED AS MISSING, LATER RECOVERED

1976

	INJURIES					TOTAL
	FATAL	SERIOUS	MINOR	NONE	UNKNOWN	
PILOT	68	5	1	2		76
COPILOT	5					5
DUAL STUDENT	1					1
CHECK PILOT						
FLIGHT ENGINEER						
NAVIGATOR						
CABIN ATTENDANT						
EXTRA CREW						
PASSENGERS	78	9	1	2		90
TOTAL	152	14	2	4	ABOARD	172
OTHER AIRCRAFT						
OTHER GROUND						
GRAND TOTAL	152	14	2	4		172
INVOLVES	76	TOTAL ACCIDENTS				
INVOLVES	70	FATAL ACCIDENTS				

1  
2  
1

INJURIES, ACCIDENTS  
 U.S. GENERAL AVIATION  
AIRCRAFT REPORTED AS MISSING, NOT RECOVERED

1976

	INJURIES					TOTAL
	FATAL	SERIOUS	MINOR	NONE	UNKNOWN	
PILOT	11					11
COPILOT						
DUAL STUDENT						
CHECK PILOT						
FLIGHT ENGINEER						
NAVIGATOR						
CABIN ATTENDANT						
EXTRA CREW						
PASSENGERS						12
TOTAL	23					23
					ABOARD	
OTHER AIRCRAFT						
OTHER GROUND						
GRAND TOTAL	23					23
INVOLVES	11	TOTAL ACCIDENTS				
INVOLVES	11	FATAL ACCIDENTS				

- 3 -

ANALYTIC TABLE

AIRCRAFT INITIALLY REPORTED AS MISSING, LATER RECOVERED

ACCIDENT SITE - TERRAIN (TYPE) - (OFF AIRPORT PROPER)  
BY EMERGENCY LOCATOR TRANSMITTER OPERATION AND USE

EMERGENCY LOCATOR TRANSMITTER  
OPERATION AND USE

ACCIDENT SITE - TERRAIN (TYPE) -  
(OFF AIRPORT PROPER)

ACCIDENT SITE - TERRAIN (TYPE) - (OFF AIRPORT PROPER)	EMERGENCY LOCATOR TRANSMITTER OPERATION AND USE											RECORDS	ACCIDENTS	PERCENT
	OPERATED-USED IN LOCATING AIRCRAFT	OPERATED-NOT USED IN LOCATING AIRCRAFT	NOT USED IN LOCATING AIRCRAFT	NOT USED IN LOCATING AIRCRAFT	NOT USED IN LOCATING AIRCRAFT-NOT DOWN	NOT USED IN LOCATING AIRCRAFT-SEPARATED FROM ANTENNA	NOT USED IN LOCATING AIRCRAFT-WEAK/CORRUPTED BATTERIES	NOT USED IN LOCATING AIRCRAFT-OTHER MALFUNCTION FAILURE	NOT USED IN LOCATING AIRCRAFT-IMPACT/FIRE DAMAGE	NOT INSTALLED	UNKNOWN/NOT REPORTED			
MOUNTAINOUS	9	2	1	5	2	3	3	5	3		4	37	37	48.68
HILLY	1		2		1		2		1			7	7	9.21
ROLLING	2						2				1	5	5	6.58
LEVEL FLAT	2		2		1	2	1	3			1	12	12	15.79
FROZEN														
ROCKY														
SANDY														
DENSE WITH TREES (FOREST, WOODED AREA)		1	2			1	3	2	2			11	11	14.47
CITY AREA														
PLOWED														
WATER-LAKES, RIVERS, ETC.	1										2	3	3	3.95
OTHER									1			1	1	1.32
UNKNOWN/NOT REPORTED														
RECORDS	15	3	7	5	4	6	11	10	7	1	7	76		
ACCIDENTS	15	3	7	5	4	6	11	10	7	1	7		76	
PERCENTS	19.7	3.9	9.2	6.6	5.3	7.9	14.5	13.2	9.2	1.3	9.2			



**Statistical Tables**

**Accidents**

**Involving**

**Missing, Later**

**Recovered Aircraft**



# ANALYTIC TABLE

## KIND OF FLYING BY PILOT CERTIFICATE

### PILOT CERTIFICATE

<u>KIND OF FLYING</u>	<u>STUDENT</u>	<u>PRIVATE</u>	<u>COMMERCIAL</u>	<u>ATR</u>	<u>PRIVATE/ FL INSTR.</u>	<u>COMMERCIAL/ FL INSTR.</u>	<u>ATR/ FL INSTR.</u>	<u>OTHER</u>	<u>NONE</u>	<u>UNKNOWN/ NOT REPORTED</u>	<u>RECORDS</u>	<u>ACCIDENTS</u>	<u>PERCENT</u>
<u>INSTRUCTIONAL</u>													
DU&L			1								1	1	1.32
SOLO													
CHECK													
TRAINING				1							1	1	1.32
<u>NONCOMMERCIAL</u>													
PLEASURE	4	45	8		2						59	59	77.63
PRACTICE													
BUSINESS				4		1					5	5	6.58
CORPORATE/EXECUTIVE							1				1	1	1.32
AERIAL SURVEY													
COMPANY FLIGHT													
OTHER				1							1	1	1.32
<u>COMMERCIAL</u>													
AERIAL APPLICATION													
CROP CONTROL RELATED FLIGHT				1							1	1	1.32
FIRE CONTROL													
FIRE CONTROL RELATED FLIGHT													
AERIAL MAPPING/PHOTOGRAPHY													
AERIAL ADVERTISING													
POWER AND PIPELINE PATROL													
FISH SPOTTING													
ATR TAXI-PASSENGER OPERATIONS				1		1					2	2	2.63
ATR TAXI-CARGO OPERATIONS				1							1	1	1.32
CONSTRUCTION WORK													
SCHEDULED PASSENGER SERVICE													
SCHEDULED CARGO SERVICE													
INTRA-STATE CHARTER PASSG.													
INTRA-STATE CHARTER CARGO.													
MILITARY CONTRACT-PASSENGER													
MILITARY CONTRACT-CARGO													
CHARTER CARGO-DOMESTIC													
CHARTER PASSG-DOMESTIC													
CHARTER-CARGO-INTERNATIONAL													
CHARTER-PASSG-INTERNATIONAL													
OTHER				1							1	1	1.32

ANALYTIC TABLE

KIND OF FLYING BY PILOT CERTIFICATE

KIND OF FLYING	PILOT CERTIFICATE										RECORDS	ACCIDENTS	PERCENT
	STUDENT	PRIVATE	COMMERCIAL	ATR	PRIVATE/ FL. INSTR.	COMMERCIAL/ FL. INSTR.	ATR/ FL. INSTR.	OTHER	NONE	UNKNOWN/ NOT REPORTED			
UNKNOWN/NOT REPORTED													
<u>MISCELLANEOUS</u>													
EXPERIMENTATION													
TEST		1									1	1	1.32
DEMONSTRATION													
FERRY			1								1	1	1.32
SEARCH AND RESCUE													
AIR SHOW/AIR RACING													
PARACHUTE JUMP													
PARACHUTE JUMP-AIR SHOW													
TOWING GLIDERS													
SEEDING CLOUDS													
HUNTING													
POLICE PATROL													
HIGHWAY TRAFFIC ADVISORY													
ALL OTHER PUBLIC FLYING													
OTHER					1						1	1	1.32
UNKNOWN/NOT REPORTED													
OTHER													
RECORDS	4	52	14		5	1					76		
ACCIDENTS	4	52	14		5	1						76	
PERCENTS	5.3	68.4	18.4	.0	.0	6.6	1.3	.0	.0	.0			

# ANALYTIC TABLE

## FIRST TYPE OF ACCIDENT BY AIRCRAFT DAMAGE

<u>FIRST TYPE OF ACCIDENT</u>	<u>AIRCRAFT DAMAGE</u>		<u>RECORDS</u>	<u>ACCIDENTS</u>	<u>PERCENT</u>
	<u>DESTROYED</u>	<u>SUBSTANTIAL</u>			
GROUND-WATER LOOP-SWERVE					
DROGGED WINGTIP ROD OR FLOAT					
WHEELS-UP LANDING					
WHEELS-DOWN LANDING IN WATER					
GEAR COLLAPSED					
GEAR RETRACTED					
HARD LANDING					
NOSE OVER/DOWN					
ROLL OVER					
OVERSHOOT					
UNDERSHOOT					
<u>COLLISION BETWEEN AIRCRAFT</u>					
BOTH IN FLIGHT					
ONE AIRBORNE					
BOTH ON GROUND					
<u>COLLISION WITH GROUND/WATER</u>					
CONTROLLED	18	1	19	19	25.00
UNCONTROLLED	24	3	27	27	35.53
<u>COLLIDED WITH</u>					
WIRES/POLES	4	1	5	5	6.58
TREES	9		9	9	11.84
RESIDENCE/S					
BUILDING/S					
FENCE, FENCEPOSTS					
ELECTRONIC TOWERS					
RUNWAY OR APPROACH LIGHTS					
AIRPORT HAZARD					
ANIMALS					
CROP					
FLAGMAN LOADER					
DITCHES					
SNOWBANK					
PARKED AIRCRAFT (UNATTENDED)					
AUTOMOBILE					
DIRT BANK					
OTHER					

ANALYTIC TABLE

FIRST TYPE OF ACCIDENT BY AIRCRAFT DAMAGE

AIRCRAFT DAMAGE

<u>FIRST TYPE OF ACCIDENT</u>	<u>AIRCRAFT DAMAGE</u>				<u>RECORDS</u>	<u>ACCIDENTS</u>	<u>PERCENT</u>
	<u>DESTROYED</u>	<u>SUBSTANTIAL</u>	<u>MINOR</u>	<u>NONE</u>			
<u>BIRD STRIKE</u>							
STALL	1				1	1	1.32
SPIN	2	1			3	3	3.95
SPIRAL	1				1	1	1.32
MISH	1				1	1	1.32
<u>FIRE OR EXPLOSION</u>							
IN FLIGHT							
ON GROUND							
<u>AIRFRAME FAILURE</u>							
IN FLIGHT	5				5	5	6.58
ON GROUND							
ENGINE TEARAWAY							
ENGINE FAILURE OR MALFUNCTION	4	1			5	5	6.58
<u>PROPELLER/ROTOR FAILURE</u>							
PROPELLER							
TAIL ROTOR							
MAIN ROTOR							
PROP ROTOR ACNT TO PERSON							
JET INTAKE/EXH ACNT TO PERS							
PROPELLER/JET/ROTOR BLAST							
<u>TURBULENCE</u>							
HAIL DAMAGE TO AIRCRAFT							
LIGHTNING STRIKE							
EVASIVE MANEUVER							
UNCONTROLLED ALT DEVIATION							
DITCHING							
MISSING ACFT NOT RECOVERED							
MISCELLANEOUS/OTHER							
UNDETERMINED							
OTHER							
RECORDS	69	7			76		
ACCIDENTS	69	7				76	
PERCENTS	90.8	9.2	.0	.0			

ANALYTIC TABLE

FIRST PHASE OF OPERATION BY INJURY INDEX

<u>FIRST OPERATIONAL PHASE</u>	<u>INJURY INDEX</u>				<u>RECORDS</u>	<u>ACCIDENTS</u>	<u>PERCENT</u>
	<u>FATAL</u>	<u>SERIOUS</u>	<u>MINOR</u>	<u>NONE</u>			
<u>STATIC</u>							
STARTING ENGINE/S							
IDLING ENGINE/S							
ENGINE RUNUP							
IDLING ROTORS							
PARKED-ENGINES NOT OPERATING							
OTHER							
<u>TAXI</u>							
TO TAKEOFF							
FROM LANDING							
OTHER							
GROUND TAXI TO TAKEOFF							
GROUND TAXI FROM LANDING							
GROUND TAXI, OTHER							
AERIAL TAXI TO TAKEOFF							
AERIAL TAXI TO/FROM LANDING							
AERIAL TAXI, OTHER							
<u>TAKEOFF</u>							
RUN							
INITIAL CLIMB	1				1	1	1.32
VERTICAL							
RUNNING (ROTORCRAFT/VTOL-STOL)							
ABORTED (FIXED-WING)							
ABORTED (ROTORCRAFT/VTOL)							
ABORTED (ROTORCRAFT/STOL)							
OTHER							
<u>INFLIGHT</u>							
CLIMB TO CRUISE	1	1			2	2	2.63
NORMAL CRUISE	22				22	27	28.95
DESCENDING	1				1	1	1.32
HOLDING (IFR)							
HOVERING							
POWER-ON DESCENT (ROTORCRAFT)							
AUTOROTATIVE DESCENT							
ACROBATICS							
BUZZING	1				1	1	1.32

## ANALYTIC TABLE

### FIRST PHASE OF OPERATION BY INJURY INDEX

FIRST OPERATIONAL PHASE	INJURY INDEX				RECORDS	ACCIDENTS	PERCENT
	FATAL	SERIOUS	MINOR	NONE			
UNCONTROLLED DESCENT	20	2			22	27	28.95
EMERGENCY DESCENT							
LOW PASS	5				5	5	6.58
OTHER	14				14	14	18.42
EN ROUTE TO TREAT CROP							
EN ROUTE TO RELOADING AREA							
SURVEY FIELD/AREA							
STARTING SWATH RUN							
SWATH RUN							
FLAREOUT FOR SWATH RUN							
PULLUP FROM SWATH RUN							
PROCEDURE TURNAROUND							
CLEANUP SWATH							
MANEUVER TO AVOID OBSTRUCTION							
RETURN TO STRIP	1				1	1	1.32
<u>LANDING</u>							
TRAFFIC PATTERN-CIRCLING	2				2	2	2.63
FINAL APPROACH (VFR)							
INITIAL APPROACH		1			1	1	1.32
FINAL APPROACH (IFR)							
LEVEL OFF/TOUCHDOWN	1	1	1		3	3	3.95
ROLL (FIXED WING)							
ROLL-ON/RUN-ON (ROTORCRAFT)							
POWER-ON LANDING (ROTORCRAFT)							
POWER-OFF AUTOROTATIVE LOG							
GO-AROUND (VFR)							
MISSED APPROACH (IFR)							
OTHER							
UNKNOWN/NOT REPORTED	1				1	1	1.32
RECORDS	70	4	2		76		
ACCIDENTS	70	4	2			76	
PERCENTS	92.1	5.3	.0	2.6			



CAUSE/FACTOR TABLE  
AIRCRAFT INITIALLY REPORTED AS MISSING, LATER RECOVERED

U.S. GENERAL AVIATION ACCIDENTS  
 1976  
 (EXCLUDES ACCIDENTS WITHOUT CAUSAL ASSIGNMENT)

INVOLVES 76 TOTAL ACCIDENTS  
 INVOLVES 70 FATAL ACCIDENTS

BROAD CAUSE/FACTOR	FATAL ACCIDENTS			NONFATAL ACCIDENTS			ALL ACCIDENTS		
	CAUSE	FACTOR	TOTAL*	CAUSE	FACTOR	TOTAL*	CAUSE	FACTOR	TOTAL*
PILOT	64 91.43	13 18.57	64 91.43	6 100.00	1 16.67	6 100.00	70 92.11	14 18.42	70 92.11
PERSONNEL	.00	4 5.71	4 5.71	.00	.00	.00	.00	4 5.26	4 5.26
AIRFRAME	.00	2 2.86	2 2.86	.00	.00	.00	.00	2 2.63	2 2.63
LANDING GEAR	.00	.00	.00	.00	.00	.00	.00	.00	.00
POWERPLANT	4 5.71	.00	4 5.71	.00	.00	.00	5.26	.00	4 5.26
SYSTEMS	.00	.00	.00	.00	.00	.00	.00	.00	.00
INSTRUMENTS/EQUIPMENT & ACCESSORIES	.00	.00	.00	.00	.00	.00	.00	.00	.00
ROTORCRAFT	.00	.00	.00	.00	.00	.00	.00	.00	.00
AIRPORT/AIRWAYS/FACILITIES	.00	.00	.00	.00	.00	.00	.00	.00	.00
WEATHER	3 4.29	45 64.29	48 68.57	.00	5 83.33	5 83.33	3 3.95	50 65.79	53 69.74
TERRAIN	.00	29 41.43	29 41.43	1 16.67	4 66.67	5 83.33	1 1.32	33 43.42	34 44.74
MISCELLANEOUS	.00	.00	.00	.00	.00	.00	.00	.00	.00
UNDETERMINED	5 7.14	.00	5 7.14	.00	.00	.00	5 6.58	.00	5 6.58

THE FIGURES OPPOSITE EACH CAUSAL CATEGORY REPRESENT THE NUMBER AND PERCENT OF ACCIDENTS IN WHICH THAT PARTICULAR CAUSAL CATEGORY WAS ASSIGNED

\* IF AN ACCIDENT INCLUDES BOTH A CAUSE AND RELATED FACTOR IN THE SAME CAUSAL CATEGORY, THE ACCIDENT IS REPRESENTED ONCE UNDER THE TOTAL FOR THAT CATEGORY

CAUSE/FACTOR TABLE  
AIRCRAFT INITIALLY REPORTED AS MISSING, LATER RECOVERED  
 U.S. GENERAL AVIATION ACCIDENTS  
 1976  
 (EXCLUDES ACCIDENTS WITHOUT CAUSAL ASSIGNMENT)

INVOLVES 76 TOTAL ACCIDENTS  
 INVOLVES 70 FATAL ACCIDENTS

DETAILED CAUSE/FACTOR	FATAL ACCIDENTS			NONFATAL ACCIDENTS			ALL ACCIDENTS		
	CAUSE	FACTOR	TOTAL	CAUSE	FACTOR	TOTAL	CAUSE	FACTOR	TOTAL
<b>** PILOT **</b>									
PILOT IN COMMAND									
ATTEMPTED OPERATION W/KNOWN DEFICIENCIES IN EQUIPMENT	1	1	2				1	1	2
ATTEMPTED OPERATION BEYOND EXPERIENCE/ABILITY LEVEL	6	1	7	1	1	2	7	2	9
BECAME LOST/DISORIENTED	2	1	3				2	1	3
CONTINUED VFR FLIGHT INTO ADVERSE WEATHER CONDITIONS	27		27	3		3	30		30
DIVERTED ATTENTION FROM OPERATION OF AIRCRAFT	2		2				2		2
EXCEEDED DESIGN STRESS LIMITS OF AIRCRAFT	3		3				3		3
FAILED TO SEE AND AVOID OBJECTS OR OBSTRUCTIONS	5		5				5		5
FAILED TO OBTAIN/MAINTAIN FLYING SPEED	4		4				4		4
FAILED TO FOLLOW APPROVED PROCEDURES, DIRECTIVES ETC	1	1	2				1	1	2
IMPROPER OPERATION OF FLIGHT CONTROLS	2		2				2		2
IMPROPER IN-FLIGHT DECISIONS OR PLANNING	21		21	1		1	22		22
INADEQUATE PREFLIGHT PREPARATION AND/OR PLANNING	6	8	14	1		1	7	8	15
MISMANAGEMENT OF FUEL				1		1	1		1
EXERCISED POOR JUDGMENT	6	1	5				4	1	5
SELECTED UNSUITABLE TERRAIN				1		1	1		1
INITIATED FLIGHT IN ADVERSE WEATHER CONDITIONS	8		8	1		1	9		9
MISJUDGED CLEARANCE	4		4				4		4
INCAPACITATION	2		2				2		2
PHYSICAL IMPAIRMENT	1	2	3				1	2	3
SPATIAL DISORIENTATION	17		17	2		2	19		19
SUBTOTAL	116	15	131	11	1	12	127	16	143
<b>** PERSONNEL **</b>									
FLIGHT INSTRUCTOR									
INADEQUATE SUPERVISION OF FLIGHT		1	1					1	1
MAINTENANCE, SERVICING, INSPECTION									
IMPROPER MAINTENANCE(OWNER PERSONNEL)		1	1					1	1
INADEQUATE INSPECTION OF AIRCRAFT(MAINTENANCE PERSONNEL)		1	1					1	1
OPERATIONAL SUPERVISORY PERSONNEL									
WEATHER PERSONNEL									
INCORRECT WEATHER FORECAST		1	1					1	1
TRAFFIC CONTROL PERSONNEL									
FAILURE TO ADVISE OF UNSAFE WEATHER CONDITION		1	1					1	1
AIRPORT SUPERVISORY PERSONNEL									
AIRWAYS FACILITIES PERSONNEL									
PRODUCTION-DESIGN-PERSONNEL									
MISCELLANEOUS-PERSONNEL									
THIRD PILOT									
FLIGHT ENGINEER									
FLIGHT PERSONNEL									
DISPATCHING (AIR CARRIER ONLY)									
SUBTOTAL		5	5					5	5
<b>** AIRFRAME **</b>									
WINGS									
WING ATTACHMENT FITTINGS, BOLTS		1	1					1	1
FUSELAGE									
OTHER		1	1					1	1
LANDING GEAR									
FLIGHT CONTROL SURFACES									
SUBTOTAL		2	2					2	2
<b>** POWERPLANT **</b>									
ENGINE STRUCTURE									
IGNITION SYSTEM									

CAUSE/FACTOR TABLE

POWERPLANT (CONTINUED)

DETAILED CAUSE/FACTOR	FATAL ACCIDENTS			NONFATAL ACCIDENTS			ALL ACCIDENTS		
	CAUSE	FACTOR	TOTAL	CAUSE	FACTOR	TOTAL	CAUSE	FACTOR	TOTAL
FUEL SYSTEM									
PUMPS	1		1				1		1
LUBRICATING SYSTEM									
COOLING SYSTEM									
PROPELLER AND ACCESSORIES									
EXHAUST SYSTEM									
ENGINE ACCESSORIES									
ENGINE CONTROLS									
POWERPLANT-INSTRUMENTS									
MISCELLANEOUS									
POWERPLANT FAILURE FOR UNDETERMINED REASONS	3		3				3		3
REDUCTION GEAR ASSEMBLY									
COMPRESSOR ASSEMBLY									
COMBUSTION ASSEMBLY									
TURBINE ASSEMBLY									
ACCESSORY DRIVE ASSEMBLY									
LUBRICATING SYSTEM									
FUEL SYSTEM									
SAFETY SYSTEM									
IGNITION SYSTEM									
TORQUEMETER									
AIR BLEED									
EXHAUST SYSTEM									
THRUST REVERSER									
PROPELLER SYSTEM									
CONSTANT SPEED DRIVE									
POWER LEVER									
PROPELLER LEVER									
REVERSE THRUST LEVER									
ENGINE INDICATING EQUIPMENT									
ENGINE INSTALLATION									
SUBTOTAL	4		4				4		4
<b>** WEATHER **</b>									
LOW CEILING		35	35	3	3		38	38	
RAIN		10	10	1	1		11	11	
FOG		17	17				17	17	
SNOW		8	8	4	4		12	12	
ICING CONDITIONS-INCLUDES SLEET, FREEZING RAIN, ETC		6	6	2	2		8	8	
TURBULENCE IN FLIGHT, CLEAR AIR		1	1				1	1	
TURBULENCE ASSOCIATED WITH CLOUDS AND/OR THUNDERSTORMS	1	4	5				4	5	
DOWNDRAFTS, UPDRAFTS	1	3	4				1	3	
HIGH DENSITY ALTITUDE	1	2	3				1	2	
THUNDERSTORM ACTIVITY	1	4	5	1	1		1	5	
OTHER		1	1					1	
SUBTOTAL	4	91	95	11	11		4	102	106
<b>** TERRAIN **</b>									
SNOW-COVERED				1	1		1	1	
ROUGH/UNEVEN		1	1				1	1	
HIGH OBSTRUCTIONS		26	26	1	3	4	1	29	30
OTHER		2	2					2	
SUBTOTAL		29	29	1	4	5	1	33	34
<b>** MISCELLANEOUS **</b>									
UNDETERMINED	5		5				5		5
SUBTOTAL	5		5				5		5
GRAND TOTAL	129	142	271	12	16	28	141	158	299
<b>** MISCELLANEOUS ACTS, CONDITIONS **</b>									
DISREGARD OF GOOD OPERATING PRACTICE		2	2	1	1	2	1	3	4
UNWARRANTED LOW FLYING	4		4				4		4
FLEW INTO BLIND CANYON	2	1	3				2	1	3
STOLEN OR UNAUTHORIZED USE OF AIRCRAFT		1	1					1	1
SEPARATION IN FLIGHT		4	4					4	4
CARGO SHIFTED	1		1				1		1

CAUSE/FACTOR TABLE

MISCELLANEOUS ACTS, CONDITIONS (CONTINUED)

DETAILED CAUSE/FACTOR	FATAL ACCIDENTS			NONFATAL ACCIDENTS			ALL ACCIDENTS		
	CAUSE	FACTOR	TOTAL	CAUSE	FACTOR	TOTAL	CAUSE	FACTOR	TOTAL
PILOT FATIGUE		1	1					1	1
PILOT SUFFERED HEART ATTACK	1		1				1		1
ALCOHOLIC IMPAIRMENT OF EFFICIENCY AND JUDGMENT	2		2				2		2
AIRFRAME ICE	2	1	3	1		1	3	1	4
IMPROPERLY LOADED AIRCRAFT-WEIGHT-AND/OR CG		1	1					1	1
AIRCRAFT CAME TO REST IN WATER		3	3					3	3
OVERLOAD FAILURE	2	3	5				2	3	5
MATERIAL FAILURE	1		1				1		1
FUEL STARVATION	1		1	1		1	2		2

DIRECT ENTRY CAUSES ARE CARRIED UNDER THEIR APPROPRIATE CAUSAL CATEGORIES AND ARE INCLUDED IN THE TOTALS

LISTING OF ACCIDENTS  
FOLLOWED BY  
BRIEFS OF ACCIDENTS  
INVOLVING  
MISSING AIRCRAFT  
U.S. GENERAL AVIATION  
1976



LISTING OF AIRCRAFT  
REPORTED AS MISSING, NOT RECOVERED

U.S. GENERAL AVIATION  
 1976  
 (IN FILE ORDER SEQUENCE)

<u>FILE</u> <u>NUMBER</u>	<u>AIRCRAFT</u> <u>REGIST.</u>	<u>DATE</u>	<u>LOCATION</u>	<u>AIRCRAFT</u> <u>MAKE</u>	<u>MODEL</u>	<u>INJURY</u> <u>INDEX</u>
3 0081	N15496	011376	MISSING AIRCRAFT	PIPER	PA-28R	FATAL
3 0377	N9816B	020676	MISSING AIRCRAFT	BELLANCA	14-19	FATAL
3 1005	N59186	051176	MISSING AIRCRAFT	CESSNA	206	FATAL
3 1108	N9490T	012576	MISSING AIRCRAFT	CESSNA	210	FATAL
3 1506	N5953J	060276	MISSING AIRCRAFT	CESSNA	150	FATAL
3 2420	N1157	060476	MISSING AIRCRAFT	BEECH	D50	FATAL
3 2421	N34204	070876	MISSING AIRCRAFT	CESSNA	177	FATAL
3 3324	N9344D	070376	MISSING AIRCRAFT	PIPER	PA-22	FATAL
3 3847	N5VR	091476	MISSING AIRCRAFT	BELLANCA	7GCBC	FATAL
3 4039	N4573P	122876	MISSING AIRCRAFT	PIPER	PA-23	FATAL
6 0025	N6377J	080876	MISSING ACFT	PIPER	PA-28	FATAL

NATIONAL TRANSPORTATION SAFETY BOARD

WASHINGTON, D. C. 20594

RIFFS OF ACCIDENTS

INVOLVING MISSING AIRCRAFT

1976

(IN FILE ORDER SEQUENCE)

FILE	DATE	LOCATION	AIRCRAFT DATA	INJURIES F S M/N	FLIGHT PURPOSE	PILOT DATA
3-0081	1/13/76	MISSING AIRCRAFT	PIPER PA-28R N15496 DAMAGE-DESTROYED	CR- 1 0 0 PX- 0 0 0	NONCOMMERCIAL PLEASURE/PERSONAL TRANSP	COMMERCIAL, FL. INSTR., AGE 32, 1620 TOTAL HOURS, UNK/NR IN TYPE, INSTRU- MENT RATED.
		DEPARTURE POINT NORWOOD, MA	INTENDED DESTINATION MATAWAN, NJ		PHASE OF OPERATION UNKNOWN/NOT REPORTED	
		TYPE OF ACCIDENT MISSING AIRCRAFT, NOT RECOVERED				
		PROBABLE CAUSE(S) MISCELLANEOUS - UNDETERMINED				
		REMARKS- ACFT MISSING BETWEEN DEER PARK, NY AND MATAWAN, NJ DMG AND INJURY INDEX PRESUMED.				
3-0377	2/6/76	MISSING AIRCRAFT	BELLANCA 14-19 N9816A DAMAGE-DESTROYED	CR- 1 0 0 PX- 3 0 0	NONCOMMERCIAL PLEASURE/PERSONAL TRANSP	PRIVATE, AGE 50, 900 TOTAL HOURS, UNK/NR IN TYPE, NOT INSTRUMENT RATED.
		DEPARTURE POINT SANTA BARBARA, CA	INTENDED DESTINATION MEXICALI, MEX		PHASE OF OPERATION UNKNOWN/NOT REPORTED	
		TYPE OF ACCIDENT MISSING AIRCRAFT, NOT RECOVERED				
		PROBABLE CAUSE(S) MISCELLANEOUS - UNDETERMINED				
		REMARKS- ACFT DMG & INJURY INDEX PRESUMED.				



BRIEFS OF ACCIDENTS

FILE	DATE	LOCATION	AIRCRAFT DATA	INJURIES F S M/N	FLIGHT PURPOSE	PILOT DATA
3-1005	5/11/76 TIME - 1520	MISSING AIRCRAFT	CESSNA 206 N59186 DAMAGE-SUBSTANTIAL	CR- 1 0 0 PX- 0 0 0	COMMERCIAL AIR TAXI-PASSG	COMMERCIAL, AGE 57, 10877 TOTAL HOURS, 787 IN TYPE, NOT INSTRUMENT RATED.
	DEPARTURE POINT GUSTAVIUS, AK	INTENDED DESTINATION HAINES, AK			PHASE OF OPERATION UNKNOWN/NOT REPORTED	
	TYPE OF ACCIDENT MISSING AIRCRAFT, NOT RECOVERED					
	PROBABLE CAUSE(S) MISCELLANEOUS - UNDETERMINED					
	REMARKS- ACFT DMG & INJURY INDEX PRESUMED.					
3-1108	1/25/76 TIME - UNK/NR	MISSING AIRCRAFT	CESSNA 210 N9490T DAMAGE-DESTROYED	CR- 1 0 0 PX- 1 0 0	NONCOMMERCIAL PLEASURE/PERSONAL TRANSP	PRIVATE, AGE 52, 10000 TOTAL HOURS, UNK/NR IN TYPE, NOT INSTRUMENT RATED.
	DEPARTURE POINT UNKNOWN/NOT REPORTED	INTENDED DESTINATION UNKNOWN/NOT REPORTED			PHASE OF OPERATION UNKNOWN/NOT REPORTED	
	TYPE OF ACCIDENT MISSING AIRCRAFT, NOT RECOVERED					
	PROBABLE CAUSE(S) MISCELLANEOUS - UNDETERMINED					
	REMARKS- ACFT DMG, INJ INDEX & ACCDT DATE PRESUMED.					
3-1506	6/2/76 TIME - 1130	MISSING AIRCRAFT	CESSNA 150 N5953J DAMAGE-DESTROYED	CR- 1 0 0 PX- 0 0 0	INSTRUCTIONAL SOLO	STUDENT, AGE 29, 32 TOTAL HOURS, ALL IN TYPE, NOT INSTRUMENT RATED.
	DEPARTURE POINT MISSING AIRCRAFT	INTENDED DESTINATION LOCAL			PHASE OF OPERATION IN FLIGHT OTHER	
	TYPE OF ACCIDENT MISSING AIRCRAFT, NOT RECOVERED					
	PROBABLE CAUSE(S) MISCELLANEOUS - UNDETERMINED					
	REMARKS- ACFT OVERDUE AND UNREPORTED ON LCL TRNG FLT. DMG AND INJ INDEX PRESUMED.					
3-2420	6/4/76 TIME - UNK/NR	MISSING AIRCRAFT	BEECH 050 N1157 DAMAGE-DESTROYED	CR- 1 0 0 PX- 1 0 0	NONCOMMERCIAL BUSINESS	CERTIFICATE UNKNOWN, AGE 28, UNK/NR TOTAL HOURS, UNK/NR IN TYPE, UNK/NR INSTRUMENT RATED.
	DEPARTURE POINT PAHOKEE, FL	INTENDED DESTINATION DOMINICAN REPUBLIC			LAST ENROUTE STOP UNKNOWN/NOT REPORTED	
	TYPE OF ACCIDENT MISSING AIRCRAFT, NOT RECOVERED				PHASE OF OPERATION IN FLIGHT OTHER	
	PROBABLE CAUSE(S) MISCELLANEOUS - UNDETERMINED					
	REMARKS- DMG AND INJURY INDEX PRESUMED, ACFT NOT FOUND.					

BRIFFS OF ACCIDENTS

FILE	DATE	LOCATION	AIRCRAFT DATA	INJURIES F S M/N	FLIGHT PURPOSE	PILOT DATA
3-2421	7/8/76	MISSING AIRCRAFT	CESSNA 177 N34204 DAMAGE-DESTROYED	CR- 1 0 0 PX- 0 0 0	NONCOMMERCIAL PLEASURE/PERSONAL TRANSP	COMMERCIAL, AGE 33, UNK/NR TOTAL HOURS, UNK/NR IN TYPE, NOT INSTRUMENT RATED.
		DEPARTURE POINT NORFOLK, MA	INTENDED DESTINATION LOCAL		PHASE OF OPERATION IN FLIGHT OTHER	
		TYPE OF ACCIDENT MISSING AIRCRAFT, NOT RECOVERED				
		PROBABLE CAUSE(S) MISCELLANEOUS - UNDETERMINED				
		REMARKS- DMG AND INJURY INDEX PRESUMED.				
3-3324	7/3/76	MISSING AIRCRAFT	PIPER PA-22 N93440 DAMAGE-DESTROYED	CR- 1 0 0 PX- 2 0 0	NONCOMMERCIAL PLEASURE/PERSONAL TRANSP	STUDENT, AGE 43, 102 TOTAL HOURS, UNK/NR IN TYPE, NOT INSTRUMENT RATED.
		DEPARTURE POINT SILETZ BAY, OR	INTENDED DESTINATION SHFLTON, WA		PHASE OF OPERATION UNKNOWN/NOT REPORTED	
		TYPE OF ACCIDENT MISSING AIRCRAFT, NOT RECOVERED				
		PROBABLE CAUSE(S) MISCELLANEOUS - UNDETERMINED				
		REMARKS- ACFT DMG & INJURY INDEX PRESUMED.				
3-3847	9/14/76	MISSING AIRCRAFT	BELLANCA 760C N5VB DAMAGE-DESTROYED	CR- 1 0 0 PX- 0 0 0	NONCOMMERCIAL PLEASURE/PERSONAL TRANSP	PRIVATE, AGE 38, UNK/NR TOTAL HOURS, UNK/NR IN TYPE, NOT INSTRUMENT RATED.
		DEPARTURE POINT UNKNOWN/NOT REPORTED	INTENDED DESTINATION UNKNOWN/NOT REPORTED		LAST ENROUTE STOP UNKNOWN/NOT REPORTED	
		TYPE OF ACCIDENT MISSING AIRCRAFT, NOT RECOVERED			PHASE OF OPERATION IN FLIGHT NORMAL CRUISE	
		PROBABLE CAUSE(S) MISCELLANEOUS - UNDETERMINED				
		REMARKS- MAYDAY RECEIVED AT 2144ADT. PLT WAS LOST IN IMC. LAST TRANSMISSION WAS AT 2155ADT.				

BRIEFS OF ACCIDENTS

FILE	DATE	LOCATION	AIRCRAFT DATA	INJURIES F S M/N	FLIGHT PURPOSE	PILOT DATA
3-4039	12/28/76	MISSING AIRCRAFT TIME - UNK/NR	PIPER PA-23 N4573P DAMAGE-DESTROYED	CR- 1 0 0 PX- 5 0 0	COMMERCIAL AIR TAXI-PASSG	COMMERCIAL, AGE UNK/NR, 1321 TOTAL HOURS, 1000 IN TYPE, INSTRUMENT RATED.
		DEPARTURE POINT ANGUILLA ISLAND,WI	INTENDED DESTINATION REEF ISLAND,WI		PHASE OF OPERATION UNKNOWN/NOT REPORTED	
		TYPE OF ACCIDENT MISSING AIRCRAFT,NOT RECOVERED				
		PROBABLE CAUSE(S) MISCELLANEOUS - UNDETERMINED				
		FACTOR(S) WEATHER - TURBULENCE, ASSOCIATED W/CLOUDS AND/OR THUNDERSTORMS WEATHER - THUNDERSTORM ACTIVITY WEATHER BRIEFING - UNKNOWN/NOT REPORTED				
		SKY CONDITION UNKNOWN/NOT REPORTED			CEILING AT ACCIDENT SITE UNKNOWN/NOT REPORTED	
		VISIBILITY AT ACCIDENT SITE UNKNOWN/NOT REPORTED			PRECIPITATION AT ACCIDENT SITE UNKNOWN/NOT REPORTED	
		OBSTRUCTIONS TO VISION AT ACCIDENT SITE UNKNOWN/NOT REPORTED			TYPE OF WEATHER CONDITIONS IFR	
		TYPE OF FLIGHT PLAN NONE				
		REMARKS- DAMAGE AND INJURY INDEX PRESUMED.				
6-0025	8/8/76	MISSING ACFT TIME - UNK/NR	PIPER PA-28 N6377J DAMAGE-DESTROYED	CR- 1 0 0 PX- 0 0 0	NONCOMMERCIAL PLEASURE/PERSONAL TRANSP	PRIVATE, AGE 51, 324 TOTAL HOURS, 20 IN TYPE, INSTRUMENT RATED.
		DEPARTURE POINT VERA CRUZ,MFX	INTENDED DESTINATION BROWNSVILLE,TX		PHASE OF OPERATION UNKNOWN/NOT REPORTED	
		TYPE OF ACCIDENT MISSING AIRCRAFT,NOT RECOVERED				
		REMARKS- ACFT DAMAGE,INJURY INDEX PRESUMED.				



LISTING OF ACCIDENTS  
FOLLOWED BY  
BRIEFS OF ACCIDENTS  
INVOLVING  
MISSING, LATER RECOVERED AIRCRAFT  
U.S. GENERAL AVIATION  
1976



LISTING OF AIRCRAFT ACCIDENTS  
INITIALLY REPORTED AS MISSING, LATER RECOVERED

U.S. GENERAL AVIATION  
 1976  
 (IN FILE ORDER SEQUENCE)

FILE NUMBER -----	AIRCRAFT REGIST. -----	DATE -----	LOCATION -----	AIRCRAFT MAKE -----	AIRCRAFT MODEL -----	INJURY INDEX -----
3 0952	N7075T	041076	NSWEET HOME,OR	CESSNA	172	FATAL
3 0953	N7148G	052176	WEISER, ID	CESSNA	172K	FATAL
3 0981	N1573X	042676	SIMLA, CO	PIPER	PA-28	FATAL
3 1028	N10081	042176	NROSEBURG, OR	CESSNA	177B	FATAL
3 1089	N71387	051476	NBURNSVILLE, NC	CESSNA	182	FATAL
3 1154	N86927	040876	NTRIMMER, CA	BELLANCA	14-132	FATAL
3 1209	N2341A	030276	NLIBERTY, TX	PIPER	PA-22	FATAL
3 1211	N1KG	042776	NPAMPA, TX	TINY HAWK	P6E	FATAL
3 1704	N42575	040476	FEATHER FALLS, CA	CESSNA	182L	FATAL
3 1811	N228F	060676	NTALKEETNA, AK	CESSNA	170	FATAL
3 1819	N3552Y	052676	MOODY, AK	CESSNA	182	FATAL
3 1830	N338L	070276	TUCSON, AZ	BEECH	N35	FATAL
3 1877	N7490L	071376	NHELENA, MT	PIPER	PA-18	FATAL
3 1882	N4098L	032976	RUIDOSO, NM	CESSNA	340	FATAL
3 1900	N2974Z	070276	NPOST, TX	PIPER	PA-22	FATAL
3 1909	N2769R	070876	MHEBER CITY, UT	SCHWEIZER	SGU222	FATAL
3 1916	N2244S	072576	NCODY, WY	AERO COMDR	560F	FATAL
3 1921	N5890F	051676	NLIVINGSTON, AL	CESSNA	210G	FATAL
3 2062	N32682	022976	NETIWANDA, CA	PIPER	PA-32	FATAL
3 2228	N9154J	082476	NO. BONNEVILLE, WA	PIPER	PA-28	FATAL

LISTING OF AIRCRAFT ACCIDENTS  
INITIALLY REPORTED AS MISSING, LATER RECOVERED

U.S. GENERAL AVIATION  
 1976  
 (IN FILE ORDER SEQUENCE)

FILE NUMBER	AIRCRAFT REGIST.	DATE	LOCATION	AIRCRAFT MAKE	MODEL	INJURY INDEX
3 2435	N9816B	020676	NS.GORGONIO PK,CA	BELLANCA	14-192	FATAL
3 2458	N20083	081176	NENUMCLAW,WA	CESSNA	172N	FATAL
3 2608	N8015K	062976	NKAMAS,UT	STINSON	108-2	FATAL
3 2718	N4652K	073076	NINDEPENDENCE,CA	CESSNA	182P	FATAL
3 2947	N8058X	081376	NSHELTER COVE,CA	CESSNA	172B	FATAL
3 2958	N313L	080476	SNOQULMIE PASS,WA	NAVION	A	FATAL
3 2959	N4855P	031576	NHOPE,AR	PIPER	PA-23	FATAL
3 3067	N7941S	062276	NBISHOP,CA	BELL	206B	FATAL
3 3083	N91620	092076	SANTA BARBARA,CA	CESSNA	182	FATAL
3 3131	N3764D	092676	NPONCHA PASS,CO	CESSNA	182A	NONE
3 3243	N29RX	091876	ASHDOWN,AR	CESSNA	421B	FATAL
3 3246	N9997G	100576	NBUCKEYE,AZ	CESSNA	A188A	FATAL
3 3278	N80915	100976	HOOD RIVER,OR	GLOBE	GC-1B	FATAL
3 3283	N7387V	092176	NBREMERTON,WA	BELLANCA	17-31	SERIOUS
3 3430	N1383M	082576	NSALMON, ID	CESSNA	TU206E	FATAL
3 3466	N2227A	061876	NGADWIN,MI	PIPER	PA-22	FATAL
3 3505	N5591R	102876	NFLAGSTAFF,AZ	CESSNA	172	FATAL
3 3556	N3783F	081676	MANDAN,ND	CESSNA	172	FATAL
3 3593	N7614P	091576	NTRINITY CENTER,CA	PIPER	PA-24	FATAL
3 3627	N9490T	012576	NJENA,LA	CESSNA	210	FATAL



LISTING OF AIRCRAFT ACCIDENTS  
INITIALLY REPORTED AS MISSING, LATER RECOVERED

U.S. GENERAL AVIATION  
 1976  
 (IN FILE ORDER SEQUENCE)

FILE NUMBER -----	AIRCRAFT REGIST. -----	DATE -----	LOCATION -----	AIRCRAFT MAKE -----	MODEL -----	INJURY INDEX -----
3 3758	N4819V	101576	NSEGUIN, TX	BELLANCA	17-30	FATAL
3 3793	N9186M	112076	SAN MARCOS, CA	CESSNA	182	FATAL
3 3798	N4027B	111976	NTAOS, NM	BELLANCA	17-30A	FATAL
3 3808	N5679L	121976	ALDER, CO	GRUM AMER	AA-1	FATAL
3 3833	N90193	121176	NSHERIDAN, WY	CESSNA	120	FATAL
3 3879	N64024	121176	VANDALIA, IL	CESSNA	172M	FATAL
3 3906	N15987	112276	NSANDPOINT, ID	PIPER	PA-28R	FATAL
3 3978	N4635S	123176	NBARSTOW, CA	BEECH	95-855	FATAL
3 3995	N78698	122876	NPERRY, FL	PIPER	PA-11	NONE
3 4017	N12364	122276	NEMPIRE, NV	CESSNA	172M	FATAL
3 4075	N4208F	112676	NFARMINGTON, NM	PIPER	PA-28	FATAL
3 4127	N99258	121976	PALD, MI	ERCO	415-C	FATAL
3 4138	N34434	100376	MANTENO, IL	CESSNA	177B	FATAL
3 4148	N2080C	092076	L'ANSE, MI	BEECH	95	FATAL
3 4164	N21496	042976	NKIRKLAND, TX	CESSNA	172M	FATAL
3 4169	N808D	120976	YOSEMITE, CA	HOWARD	500	FATAL
3 4177	N5205X	071376	NSANTA BARBARA, CA	CESSNA	320	FATAL

NATIONAL TRANSPORTATION SAFETY BOARD

WASHINGTON, D. C. 20594

BRIEFS OF ACCIDENTS

INVOLVING MISSING, LATER RECOVERED AIRCRAFT

1976

(IN STATE AND DATE ORDER)

FILE	DATE	LOCATION	AIRCRAFT DATA	INJURIES F S M/N	FLIGHT PURPOSE	PILOT DATA
3-1921	5/16/76	NR.LIVINGSTON,AL	CESSNA 210G NS890F DAMAGE-DESTROYED	CR- 1 0 0 PX- 0 0 0	NONCOMMERCIAL PLEASURE/PERSONAL TRANSP	COMMERCIAL, AGE 48, 700 TOTAL HOURS, 40 IN TYPE, INSTRUMENT RATED.
		DEPARTURE POINT TUSCALOOSA,AL	INTENDED DESTINATION ATLANTA,GA		PHASE OF OPERATION IN FLIGHT LOW PASS	
		TIME - 1400				
		TYPE OF ACCIDENT STALL MUSH				
		PROBABLE CAUSE(S) PILOT IN COMMAND - DIVERTED ATTENTION FROM OPERATION OF AIRCRAFT PILOT IN COMMAND - FAILED TO OBTAIN/MAINTAIN FLYING SPEED				
		FACTOR(S) TERRAIN - HIGH OBSTRUCTIONS PILOT IN COMMAND - PHYSICAL IMPAIRMENT				
		MISSING AIRCRAFT - LATER RECOVERED FIRE AFTER IMPACT				
		REMARKS- PLT ON PHOTO FLT OF TENN-TOM WATERWAY PROJECT.RECOVERY DATE 8/19/76.AUTOPSY-POSSIBLE HEART ATTACK.				

## BRIEFS OF ACCIDENTS

FILE	DATE	LOCATION	AIRCRAFT DATA	INJURIES F S M/N	FLIGHT PURPOSE	PILOT DATA
3-1819	5/26/76	MOODY, AK	CESSNA 182 N3552Y DAMAGE-DESTROYED	CR- 1 0 0 PX- 3 0 0	NONCOMMERCIAL PLEASURE/PERSONAL TRANSP	PRIVATE, AGE 53, 1237 TOTAL HOURS, UNK/NR IN TYPE, INSTRUMENT RATED.
		DEPARTURE POINT ANCHORAGE, AK	INTENDED DESTINATION NORTHWAY, AK		PHASE OF OPERATION IN FLIGHT NORMAL CRUISE	
		TYPE OF ACCIDENT COLLISION WITH GROUND/WATER	CONTROLLED			
		PROBABLE CAUSE(S) PILOT IN COMMAND - CONTINUED VFR FLIGHT INTO ADVERSE WEATHER CONDITIONS PILOT IN COMMAND - IMPROPER IN-FLIGHT DECISIONS OR PLANNING FACTOR(S) TERRAIN - HIGH OBSTRUCTIONS WEATHER - LOW CEILING WEATHER - SNOW WEATHER BRIEFING - BRIEFED BY FLIGHT SERVICE PERSONNEL, BY PHONE WEATHER FORECAST - FORECAST SUBSTANTIALLY CORRECT MISSING AIRCRAFT - LATER RECOVERED				
		SKY CONDITION OBSCURATION VISIBILITY AT ACCIDENT SITE ZERO OBSTRUCTIONS TO VISION AT ACCIDENT SITE NONE TYPE OF FLIGHT PLAN VFR			CEILING AT ACCIDENT SITE UNKNOWN/NOT REPORTED PRECIPITATION AT ACCIDENT SITE RAIN TYPE OF WEATHER CONDITIONS IFR	
		REMARKS- HIT CANYON WALL. RECOVERY DATE 5/31/76.				

## BRIEFS OF ACCIDENTS

FILE	DATE	LOCATION	AIRCRAFT DATA	INJURIES F S M/N	FLIGHT PURPOSE	PILOT DATA
3-1811	6/6/76	NR.TALKEETNA,AK TIME - 1130	CESSNA 170 N228F DAMAGE-DESTROYED INTENDED DESTINATION RETURN	CR- 1 0 0 PX- 0 0 0	NONCOMMERCIAL PLEASURE/PERSONAL TRANSP	STUDENT, AGE 44, 38 TOTAL HOURS, ALL IN TYPE, NOT INSTRUMENT RATED.
		DEPARTURE POINT ANCHORAGE,AK TYPE OF ACCIDENT COLLISION WITH GROUND/WATER	CONTROLLED		LAST ENROUTE STOP KENAI,AK PHASE OF OPERATION LANDING LEVEL OFF/TOUCHDOWN	
		PROBABLE CAUSE(S) PILOT IN COMMAND - ATTEMPTED OPERATION BEYOND EXPERIENCE/ABILITY LEVEL PILOT IN COMMAND - CONTINUED VFR FLIGHT INTO ADVERSE WEATHER CONDITIONS FACTOR(S) WEATHER - LOW CEILING WEATHER - SNOW WEATHER BRIEFING - BRIEFED BY FLIGHT SERVICE PERSONNEL, IN PERSON WEATHER FORECAST - WEATHER SLIGHTLY WORSE THAN FORECAST MISSING AIRCRAFT - LATER RECOVERED EMERGENCY CIRCUMSTANCES - PRECAUTIONARY LANDING OFF AIRPORT ADVERSE/UNFAVORABLE WEATHER				
		SKY CONDITION OVERCAST/LOWER SCATTERED VISIBILITY AT ACCIDENT SITE 5 OR OVER (UNLIMITED) OBSTRUCTIONS TO VISION AT ACCIDENT SITE NONE TYPE OF FLIGHT PLAN VFR REMARKS- RECOVERY 6/13/76.			CEILING AT ACCIDENT SITE 500 PRECIPITATION AT ACCIDENT SITE NONE TYPE OF WEATHER CONDITIONS UNKNOWN/NOT REPORTED	
3-0467	3/18/76	NR.GILA BEND,AZ TIME - 1722	CESSNA 182J N2923F DAMAGE-DESTROYED INTENDED DESTINATION SAN DIEGO,CA	CR- 1 0 0 PX- 0 0 0	NONCOMMERCIAL BUSINESS	PRIVATE, AGE 38, 929 TOTAL HOURS, 800 IN TYPE, INSTRUMENT RATED.
		DEPARTURE POINT PHOENIX,AZ TYPE OF ACCIDENT COLLIDED WITH WIRES/POLES			PHASE OF OPERATION IN FLIGHT LOW PASS	
		PROBABLE CAUSE(S) PILOT IN COMMAND - FAILED TO SEE AND AVOID OBJECTS OR OBSTRUCTIONS MISCELLANEOUS ACTS,CONDITIONS - UNWARRANTED LOW FLYING FACTOR(S) TERRAIN - HIGH OBSTRUCTIONS MISSING AIRCRAFT - LATER RECOVERED FIRE AFTER IMPACT REMARKS- HIT PWR LINES 55FT AGL. RECOVERY DATE 3/19/76.				

## BRIEFS OF ACCIDENTS

FILE	DATE	LOCATION	AIRCRAFT DATA	INJURIES F S M/N	FLIGHT PURPOSE	PILOT DATA
3-1830	7/2/76 TIME - 0521	TUCSON, AZ	BEECH N35 N338L DAMAGE-SUBSTANTIAL	CR- 1 0 0 PX- 0 0 0	NONCOMMERCIAL PLEASURE/PERSONAL TRANSP	COMMERCIAL, AGE 43, 2413 TOTAL HOURS, UNK/NR IN TYPE, NOT INSTRUMENT RATED.
NAME OF AIRPORT - RYAN FIELD DEPARTURE POINT INTENDED DESTINATION SAN DIEGO, CA. MESA, AZ TYPE OF ACCIDENT PHASE OF OPERATION COLLISION WITH GROUND/WATER UNCONTROLLED IN FLIGHT NORMAL CRUISE PROBABLE CAUSE(S) MISCELLANEOUS - UNDETERMINED MISSING AIRCRAFT - LATER RECOVERED REMARKS- ACFT ON AUTO-PILOT.						
3-3246	10/5/76 TIME - 1430	NR.BUCKEYE, AZ	CESSNA A188A N9997G DAMAGE-DESTROYED	CR- 1 0 0 PX- 1 0 0	COMMERCIAL ASSOC CROP CTL ACTIVITY	COMMERCIAL, AGE 31, 7000 TOTAL HOURS, 300 IN TYPE, NOT INSTRUMENT RATED.
DEPARTURE POINT INTENDED DESTINATION WINTERSBURG, AZ EL MIRAGE, AZ. TYPE OF ACCIDENT PHASE OF OPERATION STALL SPIN IN FLIGHT RETURN TO STRIP PROBABLE CAUSE(S) PILOT IN COMMAND - IMPROPER OPERATION OF FLIGHT CONTROLS PILOT IN COMMAND - PHYSICAL IMPAIRMENT MISCELLANEOUS ACTS, CONDITIONS - ALCOHOLIC IMPAIRMENT OF EFFICIENCY AND JUDGMENT FACTOR(S) PILOT IN COMMAND - FAILED TO FOLLOW APPROVED PROCEDURES, DIRECTIVES, ETC. MISSING AIRCRAFT - LATER RECOVERED SPECIAL DATA TOTAL HOURS IN CROP CONTROL - UNKNOWN/NOT REPORTED KIND OF CROP - COTTON PILOT'S SEAT BELT - NOT FASTENED GOGGLES - NOT USED COCKPIT CRASHPAD - INSTALLED TANK/HOPPER-LOCATION - FORWARD OF PILOT REMARKS- BLOOD ALCOHOL 0.357%. SINGLE SEAT EQUIPPED.						
KIND OF OPERATION - DEFOLIATION (LIQUID) TYPE OF CHEMICAL USED - LIQUID CHEMICAL-NONTOXIC GLOVES - NOT USED CRASH HELMET - AVAILABLE-NOT USED CRASH BAR - INSTALLED						

## BRIEFS OF ACCIDENTS

FILE	DATE	LOCATION	AIRCRAFT DATA	INJURIES F S M/N	FLIGHT PURPOSE	PILOT DATA
3-3505	10/28/76	NR.FLAGSTAFF,AZ	CESSNA 172	CR- 2 0 0	NONCOMMERCIAL	PRIVATE, AGE 56, 800
	TIME - 0730		N5591R	PX- 0 0 0	PLEASURE/PERSONAL TRANSP	TOTAL HOURS, ALL IN TYPE, NOT INSTRUMENT RATED.
	DEPARTURE POINT		DAMAGE-DESTROYED			
	LAKE HAVASU,AZ		INTENDED DESTINATION			
	TYPE OF ACCIDENT		WINSLOW,AZ			
	COLLIDED WITH TREES				PHASE OF OPERATION	
					IN FLIGHT NORMAL CRUISE	
	PROBABLE CAUSE(S)					
	PILOT IN COMMAND - CONTINUED VFR FLIGHT INTO ADVERSE WEATHER CONDITIONS					
	FACTOR(S)					
	PERSONNEL - WEATHER PERSONNEL INCORRECT WEATHER FORECAST					
	WEATHER - LOW CEILING					
	WEATHER BRIEFING - BRIEFED BY FLIGHT SERVICE PERSONNEL, BY PHONE					
	WEATHER FORECAST - WEATHER CONSIDERABLY WORSE THAN FORECAST					
	MISSING AIRCRAFT - LATER RECOVERED					
	SKY CONDITION				CEILING AT ACCIDENT SITE	
	OBSCURATION				UNKNOWN/NOT REPORTED	
	VISIBILITY AT ACCIDENT SITE				PRECIPITATION AT ACCIDENT SITE	
	ZERO				NONE	
	OBSTRUCTIONS TO VISION AT ACCIDENT SITE				TEMPERATURE-F	
	NONE				31	
	WIND DIRECTION-DEGREES				WIND VELOCITY-KNOTS	
	50				9	
	TYPE OF WEATHER CONDITIONS				TYPE OF FLIGHT PLAN	
	VFR				NONE	
	REMARKS- RECOVERY DATE 10/31/76.					

BRIEFS OF ACCIDENTS

FILE	DATE	LOCATION	AIRCRAFT DATA	INJURIES F S M/N	FLIGHT PURPOSE	PILOT DATA
3-2959	3/15/76	NR.HOPE,AR TIME - 0440	PIPER PA-23 N4855P DAMAGE-DESTROYED	CR- 1 0 0 PX- 1 0 0	MISCELLANEOUS FERRY	COMMERCIAL, AGE 35, 1552 TOTAL HOURS, 6 IN TYPE, INSTRUMENT RATED.
		DEPARTURE POINT HOPE,AR	INTENDED DESTINATION TEXARKANA,AR		PHASE OF OPERATION IN FLIGHT UNCONTROLLED DESCENT	
		TYPE OF ACCIDENT COLLISION WITH GROUND/WATER	UNCONTROLLED			
		PROBABLE CAUSE(S) PILOT IN COMMAND - INITIATED FLIGHT IN ADVERSE WEATHER CONDITIONS PILOT IN COMMAND - IMPROPER IN-FLIGHT DECISIONS OR PLANNING PILOT IN COMMAND - SPATIAL DISORIENTATION				
		FACTOR(S) PILOT IN COMMAND - INADEQUATE PREFLIGHT PREPARATION AND/OR PLANNING WEATHER - LOW CEILING WEATHER - FOG WEATHER BRIEFING - NO RECORD OF BRIEFING RECEIVED WEATHER FORECAST - FORECAST SUBSTANTIALLY CORRECT MISSING AIRCRAFT - LATER RECOVERED				
		SKY CONDITION OBSCURATION			CEILING AT ACCIDENT SITE 300	
		VISIBILITY AT ACCIDENT SITE 2 MILES OR LESS			PRECIPITATION AT ACCIDENT SITE DRIZZLE	
		OBSTRUCTIONS TO VISION AT ACCIDENT SITE FOG			TEMPERATURE-F 52	
		TYPE OF WEATHER CONDITIONS IFR			TYPE OF FLIGHT PLAN NONE	
		REMARKS- PLT TOTL FLT TM IN TYPE 6 HRS, INSTRMNT TM LAST 2 YRS 6 HRS, NONE IN LAST 6 MOS, RECOVERED SAME DATE.				

## BRIEFS OF ACCIDENTS

FILE	DATE	LOCATION	AIRCRAFT DATA	INJURIES F S M/N	FLIGHT PURPOSE	PILOT DATA
3-3243	9/18/76 TIME - 1450	ASHDOWN, AR	CESSNA 421B N29RX DAMAGE-DESTROYED	CR- 2 0 0 PX- 1 0 0	NONCOMMERCIAL CORP/EXEC	ATP, FLIGHT INSTR., AGE 41, 10079 TOTAL HOURS, 533 IN TYPE, INSTRUMENT RATED.
		DEPARTURE POINT ATLANTA, GA	INTENDED DESTINATION ABILENE, TX			
		TYPE OF ACCIDENT AIRFRAME FAILURE IN FLIGHT		PHASE OF OPERATION IN FLIGHT OTHER		
PROBABLE CAUSE(S)						
PILOT IN COMMAND - CONTINUED VFR FLIGHT INTO ADVERSE WEATHER CONDITIONS						
MISCELLANEOUS ACTS, CONDITIONS - OVERLOAD FAILURE						
FACTOR(S)						
WEATHER - THUNDERSTORM ACTIVITY						
WEATHER - TURBULENCE, ASSOCIATED W/CLOUDS AND/OR THUNDERSTORMS						
MISCELLANEOUS ACTS, CONDITIONS - SEPARATION IN FLIGHT						
WEATHER BRIEFING - BRIEFED BY FLIGHT SERVICE PERSONNEL, BY PHONE						
WEATHER FORECAST - FORECAST SUBSTANTIALLY CORRECT						
MISSING AIRCRAFT - LATER RECOVERED						
		SKY CONDITION OBSCURATION		CEILING AT ACCIDENT SITE 400		
		VISIBILITY AT ACCIDENT SITE 1/2 MILE OR LESS		PRECIPITATION AT ACCIDENT SITE THUNDERSTORM		
		OBSTRUCTIONS TO VISION AT ACCIDENT SITE NONE		TEMPERATURE-F 71		
		WIND DIRECTION-DEGREES 290		WIND VELOCITY-KNOTS 6		
		TYPE OF WEATHER CONDITIONS IFR		TYPE OF FLIGHT PLAN NONE		
REMARKS- ACFT DISINTEGRATED. RECOVERY DATE 9/19/76.						



BRIEFS OF ACCIDENTS

FILE	DATE	LOCATION	AIRCRAFT DATA	INJURIES F S M/N	FLIGHT PURPOSE	PILOT DATA
3-2435	2/6/76	NR.S.GORGONID PK,CA	BELLANCA 14-192 N9816R	CR- 1 0 0 PX- 3 0 0	NONCOMMERCIAL PLEASURE/PERSONAL TRANSP	PRIVATE, AGE 50, 900 TOTAL HOURS, 27 IN TYPE, NOT INSTRUMENT RATED.
	TIME - 1022		DAMAGE-DESTROYED - INTENDED DESTINATION MEXICALI,MEX			
	DEPARTURE POINT SANTA BARBARA,CA					
	TYPE OF ACCIDENT COLLISION WITH GROUND/WATER		CONTROLLED		PHASE OF OPERATION IN FLIGHT NORMAL CRUISE	
	PROBABLE CAUSE(S) PILOT IN COMMAND - CONTINUED VFR FLIGHT INTO ADVERSE WEATHER CONDITIONS					
	FACTOR(S) WEATHER - LOW CEILING WEATHER - SNOW TERRAIN - HIGH OBSTRUCTIONS					
	WEATHER BRIEFING - BRIEFED BY FLIGHT SERVICE PERSONNEL, IN PERSON WEATHER FORECAST - FORECAST SUBSTANTIALLY CORRECT MISSING AIRCRAFT - LATER RECOVERED					
	SKY CONDITION OBSCURATION				CEILING AT ACCIDENT SITE UNKNOWN/NOT REPORTED	
	VISIBILITY AT ACCIDENT SITE ZERO				PRECIPITATION AT ACCIDENT SITE RAIN	
	OBSTRUCTIONS TO VISION AT ACCIDENT SITE UNKNOWN/NOT REPORTED				TYPE OF WEATHER CONDITIONS IFR	
	TYPE OF FLIGHT PLAN VFR					
	REMARKS- RECOVERY DATE 7/28/76					

## BRIEFS OF ACCIDENTS

FILE	DATE	LOCATION	AIRCRAFT DATA	INJURIES			FLIGHT PURPOSE	PILOT DATA	
				F	S	M/N			
3-0402	2/7/76	NR.BIG BEAR CITY,CA	CESSNA 182P	CR-	0	0	1	NONCOMMERCIAL	COMMERCIAL, AGE 51, 8529
	TIME - 1230		N6716M	PX-	0	2	1	PLEASURE/PERSONAL TRANSP	TOTAL HOURS, 26 IN TYPE, INSTRUMENT RATED.
	DEPARTURE POINT		DAMAGE-SUBSTANTIAL						
	GLENDALE,AZ		INTENDED DESTINATION						
	TYPE OF ACCIDENT		LANCASTER,CA						
	COLLISION WITH GROUND/WATER		CONTROLLED						
	PROBABLE CAUSE(S)								
	PILOT IN COMMAND - IMPROPER IN-FLIGHT DECISIONS OR PLANNING								
	MISCELLANEOUS ACTS,CONDITIONS - AIRFRAME ICE								
	FACTOR(S)								
	WEATHER - ICING CONDITIONS-INCLUDES SLEET,FREEZING RAIN,ETC.								
	WEATHER - SNOW								
	TERRAIN - HIGH OBSTRUCTIONS								
	WEATHER BRIEFING - BRIEFED BY FLIGHT SERVICE PERSONNEL, BY PHONE								
	WEATHER FORECAST - UNKNOWN/NOT REPORTED								
	MISSING AIRCRAFT - LATER RECOVERED								
	EMERGENCY CIRCUMSTANCES - FORCED LANDING OFF AIRPORT ON LAND								
	SKY CONDITION								
	BROKEN								CEILING AT ACCIDENT SITE
	VISIBILITY AT ACCIDENT SITE								1000
	ZERO								PRECIPITATION AT ACCIDENT SITE
	OBSTRUCTIONS TO VISION AT ACCIDENT SITE								SLEET, SNOW SHOWERS
	ICE FOG								TEMPERATURE-F
	WIND DIRECTION-DEGREES								30
	157								WIND VELOCITY-KNOTS
	TYPE OF WEATHER CONDITIONS								25
	IFR								TYPE OF FLIGHT PLAN
	REMARKS- UN MAINTAIN ALT,SO CRASH LND IN CLEARING.								IFR
									RECOVERY DATE 2/8/76.

BRIEFS OF ACCIDENTS

FILE	DATE	LOCATION	AIRCRAFT DATA	INJURIES F S M/N	FLIGHT PURPOSE	PILOT DATA
3-0750	2/14/76	NR.GOLETA,CA TIME - 1240	PIPER PA-2B N15660 DAMAGE-DESTROYED	CR- 1 0 0 PX- 1 0 0	NONCOMMERCIAL PLEASURE/PERSONAL TRANSP	PRIVATE, AGE 26, 169 TOTAL HOURS, 66 IN TYPE, NOT INSTRUMENT RATED.
		DEPARTURE POINT BURBANK,CA	INTENDED DESTINATION UNKNOWN/NOT REPORTED		PHASE OF OPERATION IN FLIGHT NORMAL CRUISE	
		TYPE OF ACCIDENT COLLISION WITH GROUND/WATER	CONTROLLED			
		PROBABLE CAUSE(S) PILOT IN COMMAND - CONTINUED VFR FLIGHT INTO ADVERSE WEATHER CONDITIONS MISCELLANEOUS ACTS,CONDITIONS - FLEW INTO BLIND CANYON				
		FACTOR(S) PILOT IN COMMAND - INADEQUATE PREFLIGHT PREPARATION AND/OR PLANNING WEATHER - LOW CEILING TERRAIN - HIGH OBSTRUCTIONS WEATHER BRIEFING - PARTIAL BRIEFING BY FLIGHT SERVICE PERSONNEL, BY PHONE/RADIO, LIMITED BY PILOT ACTION WEATHER FORECAST - FORECAST SUBSTANTIALLY CORRECT MISSING AIRCRAFT - LATER RECOVERED				
		SKY CONDITION OBSCURATION VISIBILITY AT ACCIDENT SITE			CEILING AT ACCIDENT SITE 6000 PRECIPITATION AT ACCIDENT SITE NONE	
		ZERO OBSTRUCTIONS TO VISION AT ACCIDENT SITE NONE			TYPE OF WEATHER CONDITIONS IFR	
		TYPE OF FLIGHT PLAN NONE				
		REMARKS-	FLEW INTO OBSCURED MTN SLOPE. RECOVERY DATE 2/17/76. PLT DIDNT REQUEST ENROUTE OR DEST WEA.			

RIEFS OF ACCIDENTS

FILE	DATE	LOCATION	AIRCRAFT DATA	INJURIES			FLIGHT PURPOSE	PILOT DATA
				F	S	M/N		
3-2062	2/29/76	NR. ETIWANDA, CA TIME - 1928	PIPER PA-32 N32682 DAMAGE-DESTROYED	CR- 1 0 0			NONCOMMERCIAL	PRIVATE, AGE 23, 200 TOTAL HOURS, UNK/NR IN TYPE, NOT INSTRUMENT RATED.
		DEPARTURE POINT LAS VEGAS, NV	INTENDED DESTINATION FULLERTON, CA				PHASE OF OPERATION IN FLIGHT NORMAL CRUISE	
		TYPE OF ACCIDENT COLLISION WITH GROUND/WATER	CONTROLLED					
		PROBABLE CAUSE(S) PILOT IN COMMAND - CONTINUED VFR FLIGHT INTO ADVERSE WEATHER CONDITIONS						
		FACTOR(S) WEATHER - SNOW WEATHER - ICING CONDITIONS-INCLUDES SLEET, FREEZING RAIN, ETC. TERRAIN - HIGH OBSTRUCTIONS						
		WEATHER BRIEFING - BRIEFED BY FLIGHT SERVICE PERSONNEL, BY RADIO WEATHER FORECAST - FORECAST SUBSTANTIALLY CORRECT MISSING AIRCRAFT - LATER RECOVERED						
		SKY CONDITION OBSCURATION VISIBILITY AT ACCIDENT SITE ZERO					CEILING AT ACCIDENT SITE 0 PRECIPITATION AT ACCIDENT SITE SNOW TYPE OF WEATHER CONDITIONS IFR	
		OBSTRUCTIONS TO VISION AT ACCIDENT SITE BLOWING SNOW TYPE OF FLIGHT PLAN NONE						
		REMARKS- RECOVERY DATE 3/3/76.						
3-0749	3/7/76	NR. BANNING, CA TIME - 1745	BEECH P35 N95934 DAMAGE-DESTROYED	CR- 1 0 0			NONCOMMERCIAL	PRIVATE, AGE 41, 1587 TOTAL HOURS, 299 IN TYPE, NOT INSTRUMENT RATED.
		DEPARTURE POINT SANTA ANA, CA	INTENDED DESTINATION APPLE VALLEY, CA				PHASE OF OPERATION IN FLIGHT NORMAL CRUISE	
		TYPE OF ACCIDENT COLLISION WITH GROUND/WATER	CONTROLLED					
		PROBABLE CAUSE(S) PILOT IN COMMAND - IMPROPER IN-FLIGHT DECISIONS OR PLANNING PILOT IN COMMAND - MISJUDGED CLEARANCE						
		FACTOR(S) TERRAIN - HIGH OBSTRUCTIONS MISSING AIRCRAFT - LATER RECOVERED						
		REMARKS- RECOVERED FRM MTN SLOPE 3/8/76.						

## BRIEFS OF ACCIDENTS

FILE	DATE	LOCATION	AIRCRAFT DATA	INJURIES F S M/N	FLIGHT PURPOSE	PILOT DATA
3-0833	4/4/76 TIME - 2331	NR.SO.LAKE TAHOE,CA	CESSNA 182P N1932M DAMAGE-DESTROYED	CR- 1 0 0 PX- 3 0 0	NONCOMMERCIAL PLEASURE/PERSONAL TRANSP	PRIVATE, AGE 59, 500 TOTAL HOURS, UNK/NR IN TYPE, NOT INSTRUMENT RATED.
	DEPARTURE POINT SO.LAKE TAHOE,CA	INTENDED DESTINATION PALO ALTO,CA			PHASE OF OPERATION IN FLIGHT UNCONTROLLED DESCENT	
	TYPE OF ACCIDENT COLLISION WITH GROUND/WATER UNCONTROLLED					
	PROBABLE CAUSE(S) PILOT IN COMMAND - SPATIAL DISORIENTATION					
	FACTOR(S) TERRAIN - OTHER					
	MISSING AIRCRAFT - LATER RECOVERED					
	REMARKS- RECOVERY DATE 4/6/76. NO HORIZON REF DUE LACK OF LTG.					
3-1704	4/4/76 TIME - 2000	FEATHER FALLS,CA	CESSNA 182L N42575 DAMAGE-DESTROYED	CR- 1 0 0 PX- 0 0 0	NONCOMMERCIAL PLEASURE/PERSONAL TRANSP	PRIVATE, AGE 45, 1257 TOTAL HOURS, 1207 IN TYPE, NOT INSTRUMENT RATED.
	DEPARTURE POINT TWIN FALLS ID.	INTENDED DESTINATION CHICO,CA.			PHASE OF OPERATION IN FLIGHT UNCONTROLLED DESCENT	
	TYPE OF ACCIDENT COLLISION WITH GROUND/WATER UNCONTROLLED					
	PROBABLE CAUSE(S) PILOT IN COMMAND - SPATIAL DISORIENTATION					
	FACTOR(S) PILOT IN COMMAND - ATTEMPTED OPERATION BEYOND EXPERIENCE/ABILITY LEVEL					
	PILOT IN COMMAND - PHYSICAL IMPAIRMENT					
	MISSING AIRCRAFT - LATER RECOVERED					
	FIRE AFTER IMPACT					
	REMARKS- RECOVERY DATE 4/5/76.PILOT WAS BLIND IN ONE EYE,HAD NO RECENT NIGHT EXPERIENCE.					

## BRIEFS OF ACCIDENTS

FILE	DATE	LOCATION	AIRCRAFT DATA	INJURIES F S M/N	FLIGHT PURPOSE	PILOT DATA
3-1154	4/8/76 TIME - 0945	NR,TRIMMER,CA	BELLANCA 14-132 N86927 DAMAGE-DESTROYED	CR- 1 0 0 PX- 0 0 0	NONCOMMERCIAL PLEASURE/PERSONAL TRANSP	PRIVATE, AGE 35, 313 TOTAL HOURS, 38 IN TYPE, NOT INSTRUMENT RATED.
	DEPARTURE POINT LAS VEGAS,NV		INTENDED DESTINATION SAN JOSE,CA			
	TYPE OF ACCIDENT COLLISION WITH GROUND/WATER		UNCONTROLLED		PHASE OF OPERATION IN FLIGHT UNCONTROLLED DESCENT	
	PROBABLE CAUSE(S) PILOT IN COMMAND - IMPROPER IN-FLIGHT DECISIONS OR PLANNING PILOT IN COMMAND - CONTINUED VFR FLIGHT INTO ADVERSE WEATHER CONDITIONS PILOT IN COMMAND - SPATIAL DISORIENTATION					
	FACTOR(S) WEATHER - LOW CEILING WEATHER - RAIN WEATHER - FOG WEATHER - ICING CONDITIONS-INCLUDES SLEET,FREEZING RAIN,ETC. WEATHER - TURBULENCE, ASSOCIATED W/CLOUDS AND/OR THUNDERSTORMS TERRAIN - HIGH OBSTRUCTIONS WEATHER BRIEFING - BRIEFED BY FLIGHT SERVICE PERSONNEL, BY PHONE WEATHER FORECAST - FORECAST SUBSTANTIALLY CORRECT MISSING AIRCRAFT - LATER RECOVERED					
	SKY CONDITION OBSCURATION				CEILING AT ACCIDENT SITE 0	
	VISIBILITY AT ACCIDENT SITE ZERO				PRECIPITATION AT ACCIDENT SITE RAIN	
	OBSTRUCTIONS TO VISION AT ACCIDENT SITE FOG				TEMPERATURE-F 34	
	WIND DIRECTION-DEGREES 260				WIND VELOCITY-KNOTS 4	
	TYPE OF WEATHER CONDITIONS IFR				TYPE OF FLIGHT PLAN VFR	
	REMARKS- RECOVERED FRM MTN SLOPE 4/9/76.					
3-0908	4/10/76 TIME - 1530	PLANADA,CA	CESSNA 172A N7705T DAMAGE-DESTROYED	CR- 1 0 0 PX- 1 0 0	NONCOMMERCIAL PLEASURE/PERSONAL TRANSP	COMMERCIAL, AGE 71, 1047 TOTAL HOURS, UNK/NR IN TYPE, NOT INSTRUMENT RATED.
	DEPARTURE POINT CONCORD,CA		INTENDED DESTINATION VISALIA,CA			
	TYPE OF ACCIDENT COLLISION WITH GROUND/WATER		UNCONTROLLED		PHASE OF OPERATION IN FLIGHT OTHER	
	PROBABLE CAUSE(S) MISCELLANEOUS - UNDETERMINED MISSING AIRCRAFT - LATER RECOVERED REMARKS- RECOVERY DATE 4/11/76.					

BRIEFS OF ACCIDENTS

FILE	DATE	LOCATION	AIRCRAFT DATA	INJURIES F S M/N	FLIGHT PURPOSE	PILOT DATA
3-3067	6/22/76	NR. BISHOP, CA	BELL 206B N7941S	CR- 0 1 0 PX- 2 1 0	COMMERCIAL OTHER	COMMERCIAL, AGE 43, 6500 TOTAL HOURS, 400 IN TYPE, NOT INSTRUMENT RATED.
	TIME - 1114		DAMAGE-DESTROYED			
	DEPARTURE POINT BISHOP, CA	INTENDED DESTINATION LOCAL				
	TYPE OF ACCIDENT ENGINE FAILURE OR MALFUNCTION COLLISION WITH GROUND/WATER CONTROLLED			PHASE OF OPERATION IN FLIGHT NORMAL CRUISE LANDING ROLL-ON/RUN-ON		
	PROBABLE CAUSE(S) POWERPLANT - MISCELLANEOUS WEATHER - HIGH DENSITY ALTITUDE PILOT IN COMMAND - IMPROPER IN-FLIGHT DECISIONS OR PLANNING	POWERPLANT FAILURE FOR UNDETERMINED REASONS				
	FACTOR(S) TERRAIN - ROUGH/UNEVEN COMPLETE POWER LOSS - COMPLETE ENGINE FAILURE/FLAMEOUT-1 ENGINE WEATHER BRIEFING - NO RECORD OF BRIEFING RECEIVED MISSING AIRCRAFT - LATER RECOVERED					
	SKY CONDITION CLEAR			CEILING AT ACCIDENT SITE UNLIMITED		
	VISIBILITY AT ACCIDENT SITE 5 OR OVER (UNLIMITED)			PRECIPITATION AT ACCIDENT SITE NONE		
	OBSTRUCTIONS TO VISION AT ACCIDENT SITE NONE			TEMPERATURE-F 73		
	WIND DIRECTION-DEGREES 10			WIND VELOCITY-KNOTS 13		
	TYPE OF WEATHER CONDITIONS VFR			TYPE OF FLIGHT PLAN NONE		
	FIRE AFTER IMPACT					
	REMARKS- LOST PWR AT LOW ALT OVR MTN SLOPE, DENSITY ALT APT 9000FT. ACFT HEAVY. RECOVERY DATE 6/23/76.					

## BRIEFS OF ACCIDENTS

FILE	DATE	LOCATION	AIRCRAFT DATA	INJURIES			FLIGHT PURPOSE	PILOT DATA	
				F	S	M/N			
3-4177	7/13/76	NR. SANTA BARBARA, CA	CESSNA 320	CR-	1	0	0	NONCOMMERCIAL	COMMERCIAL, AGE 51, 850
	TIME - UNK/NR		N5205X	PX-	3	0	0	PLEASURE/PERSONAL TRANSP	TOTAL HOURS, 45 IN TYPE, NOT INSTRUMENT RATED.
	DEPARTURE POINT		DAMAGE-DESTROYED						
	SANTA BARBARA, CA		INTENDED DESTINATION						
	TYPE OF ACCIDENT		UNKNOWN/NOT REPORTED						
	UNDETERMINED								
	PROBABLE CAUSE(S)								
	MISCELLANEOUS - UNDETERMINED								
	FACTOR(S)								
	WEATHER - LOW CEILING								
	WEATHER - FOG								
	MISCELLANEOUS ACTS, CONDITIONS - AIRCRAFT CAME TO REST IN WATER								
	WEATHER BRIEFING - NO RECORD OF BRIEFING RECEIVED								
	WEATHER FORECAST - UNKNOWN/NOT REPORTED								
	MISSING AIRCRAFT - LATER RECOVERED								
	SKY CONDITION								
	OVERCAST								CEILING AT ACCIDENT SITE
	VISIBILITY AT ACCIDENT SITE								2000
	4 MILES OR LESS								PRECIPITATION AT ACCIDENT SITE
	OBSTRUCTIONS TO VISION AT ACCIDENT SITE								NONE
	FOG								WIND DIRECTION-DEGREES
	WIND VELOCITY-KNOTS								230
	4								TYPE OF WEATHER CONDITIONS
	TYPE OF FLIGHT PLAN								UNKNOWN/NOT REPORTED
	NONE								
	REMARKS-								
	PARTS OF ACFT RCVRD IN 600FT OF WATER 7/20/77 & 11/15/77. INJURY INDEX PRESUMED.								



BRIEFS OF ACCIDENTS

FILE	DATE	LOCATION	AIRCRAFT DATA	INJURIES F S M/N	FLIGHT PURPOSE	PILOT DATA
3-2718	7/30/76	NR-INDEPENDENCE,CA	CESSNA 182P N4652K DAMAGE-DESTROYED	CR- 1 0 0 PX- 3 0 0	NONCOMMERCIAL PLEASURE/PERSONAL TRANSP	COMMERCIAL, AGE 39, 289 TOTAL HOURS, 7 IN TYPE, NOT INSTRUMENT RATED.
		DEPARTURE POINT SAN MARTIN,CA	INTENDED DESTINATION LAS VEGAS,NV			
		TYPE OF ACCIDENT COLLISION WITH GROUND/WATER	CONTROLLED		PHASE OF OPERATION IN FLIGHT NORMAL CRUISE	
		PROBABLE CAUSE(S) PILOT IN COMMAND - CONTINUED VFR FLIGHT INTO ADVERSE WEATHER CONDITIONS PILOT IN COMMAND - IMPROPER IN-FLIGHT DECISIONS OR PLANNING				
		FACTOR(S) TERRAIN - HIGH OBSTRUCTIONS WEATHER - HIGH DENSITY ALTITUDE WEATHER - LOW CEILING WEATHER BRIEFING - BRIEFED BY FLIGHT SERVICE PERSONNEL, BY PHONE WEATHER FORECAST - FORECAST SUBSTANTIALLY CORRECT MISSING AIRCRAFT - LATER RECOVERED				
		SKY CONDITION BROKEN/LOWER SCATTERED VISIBILITY AT ACCIDENT SITE UNKNOWN/NOT REPORTED OBSTRUCTIONS TO VISION AT ACCIDENT SITE UNKNOWN/NOT REPORTED TYPE OF WEATHER CONDITIONS IFR			CEILING AT ACCIDENT SITE UNKNOWN/NOT REPORTED PRECIPITATION AT ACCIDENT SITE UNKNOWN/NOT REPORTED TEMPERATURE-F 55 TYPE OF FLIGHT PLAN NONE	
		REMARKS- FLEW INTO OBCURED MTN SLOPE. RECOVERY DATE 8/11/76.				

## BRIEFS OF ACCIDENTS

FILE	DATE	LOCATION	AIRCRAFT DATA	INJURIES F S M/N	FLIGHT PURPOSE	PILOT DATA
3-2947	8/13/76	NR.SHELTER COVE,CA	CESSNA 172B N8058X DAMAGE-DESTROYED	CR- 1 0 0 PX- 0 3 0	NONCOMMERCIAL PLEASURE/PERSONAL TRANSP	PRIVATE, AGE 22, 95 TOTAL HOURS, UNK/NR IN TYPE, NOT INSTRUMENT RATED.
		NAME OF AIRPORT - SHELTER COVE	INTENDED DESTINATION		LAST ENROUTE STOP	
		DEPARTURE POINT	RETURN		SHELTER COVE,CA	
		MARYSVILLE,CA.			PHASE OF OPERATION	
		TYPE OF ACCIDENT			IN FLIGHT CLIMB TO CRUISE	
		COLLIDED WITH TREES				
		PROBABLE CAUSE(S)				
		PILOT IN COMMAND - INITIATED FLIGHT IN ADVERSE WEATHER CONDITIONS				
		FACTOR(S)				
		PILOT IN COMMAND - INADEQUATE PREFLIGHT PREPARATION AND/OR PLANNING				
		PILOT IN COMMAND - EXERCISED POOR JUDGMENT				
		TERRAIN - HIGH OBSTRUCTIONS				
		WEATHER - LOW CEILING				
		WEATHER BRIEFING - BRIEFED BY FLIGHT SERVICE PERSONNEL, BY PHONE				
		WEATHER FORECAST - FORECAST SUBSTANTIALLY CORRECT				
		MISSING AIRCRAFT - LATER RECOVERED				
		SKY CONDITION			CEILING AT ACCIDENT SITE	
		OVERCAST			0	
		VISIBILITY AT ACCIDENT SITE			PRECIPITATION AT ACCIDENT SITE	
		ZERO			DRIZZLE	
		OBSTRUCTIONS TO VISION AT ACCIDENT SITE			TEMPERATURE-F	
		FOG			54	
		WIND DIRECTION-DEGREES			WIND VELOCITY-KNOTS	
		180			4	
		TYPE OF WEATHER CONDITIONS			TYPE OF FLIGHT PLAN	
		BELOW MINIMUMS			NONE	
		REMARKS- RECOVERED 8/14/76. PILOT TOTAL TIME AS OF 4/14/76.				

BRIEFS OF ACCIDENTS

FILE	DATE	LOCATION	AIRCRAFT DATA	INJURIES F S M/N	FLIGHT PURPOSE	PILOT DATA
3-3593	9/15/76	NR.TRINITY CENTER.CA	PIPER PA-24 N7614P DAMAGE-DESTROYED	CR- 1 0 0 PX- 3 0 0	NONCOMMERCIAL PLEASURE/PERSONAL TRANSP	PRIVATE, AGE 42, 306 TOTAL HOURS, 25 IN TYPE, NOT INSTRUMENT RATED.
		DEPARTURE POINT BELLINGHAM,WA	INTENDED DESTINATION MODESTO,CA		PHASE OF OPERATION IN FLIGHT UNCONTROLLED DESCENT	
		TYPE OF ACCIDENT COLLISION WITH GROUND/WATER	UNCONTROLLED			
		PROBABLE CAUSE(S) PILOT IN COMMAND - ATTEMPTED OPERATION BEYOND EXPERIENCE/ABILITY LEVEL PILOT IN COMMAND - INITIATED FLIGHT IN ADVERSE WEATHER CONDITIONS PILOT IN COMMAND - SPATIAL DISORIENTATION				
		FACTOR(S) WEATHER - LOW CEILING WEATHER BRIEFING - BRIEFED BY FLIGHT SERVICE PERSONNEL, IN PERSON WEATHER FORECAST - FORECAST SUBSTANTIALLY CORRECT MISSING AIRCRAFT - LATER RECOVERED				
		SKY CONDITION OVERCAST			CEILING AT ACCIDENT SITE UNKNOWN/NOT REPORTED	
		VISIBILITY AT ACCIDENT SITE UNKNOWN/NOT REPORTED			PRECIPITATION AT ACCIDENT SITE RAIN	
		OBSTRUCTIONS TO VISION AT ACCIDENT SITE UNKNOWN/NOT REPORTED			TEMPERATURE-F 57	
		TYPE OF WEATHER CONDITIONS IFR			TYPE OF FLIGHT PLAN NONE	
		REMARKS- RECOVERY DATE 9/16/76.				

## BRIEFS OF ACCIDENTS

FILE	DATE	LOCATION	AIRCRAFT DATA	INJURIES			FLIGHT PURPOSE	PILOT DATA	
				F	S	M/N			
3-3083	9/20/76	SANTA BARBARA,CA	CESSNA 182 N91620	CR-	1	0	0	NONCOMMERCIAL	PRIVATE, AGE 57, 343
	TIME - 1130		DAMAGE-DESTROYED	PX-	0	0	0	PLEASURE/PERSONAL TRANSP	TOTAL HOURS, 40 IN TYPE, NOT INSTRUMENT RATED.
	DEPARTURE POINT		INTENDED DESTINATION						
	SANTA YNEZ,CA		SANTA BARBARA,CA						
	TYPE OF ACCIDENT								
	COLLISION WITH GROUND/WATER		CONTROLLED						
	PROBABLE CAUSE(S)								
	PILOT IN COMMAND - INITIATED FLIGHT IN ADVERSE WEATHER CONDITIONS								
	FACTOR(S)								
	TERRAIN - HIGH OBSTRUCTIONS								
	WEATHER - LOW CEILING								
	WEATHER - FOG								
	PILOT IN COMMAND - INADEQUATE PREFLIGHT PREPARATION AND/OR PLANNING								
	WEATHER BRIEFING - NO RECORD OF BRIEFING RECEIVED								
	WEATHER FORECAST - FORECAST SUBSTANTIALLY CORRECT								
	MISSING AIRCRAFT - LATER RECOVERED								
	SKY CONDITION								
	OBSCURATION								CEILING AT ACCIDENT SITE
	VISIBILITY AT ACCIDENT SITE								3000
	ZERO								PRECIPITATION AT ACCIDENT SITE
	OBSTRUCTIONS TO VISION AT ACCIDENT SITE								NONE
	FOG								TEMPERATURE-F
	WIND DIRECTION-DEGREES								69
	250								WIND VELOCITY-KNOTS
	TYPE OF WEATHER CONDITIONS								6
	IFR								TYPE OF FLIGHT PLAN
	REMARKS- RECOVERED ON MTN SLOPE 9/21/76.								NONE

## BRIEFS OF ACCIDENTS

FILE	DATE	LOCATION	AIRCRAFT DATA	INJURIES F S M/N	FLIGHT PURPOSE	PILOT DATA
3-3793	11/20/76	SAN MARCOS,CA	CESSNA 182 N9186M DAMAGE-DESTROYED	CR- 1 0 0 PX- 1 0 0	NONCOMMERCIAL PLEASURE/PERSONAL TRANSP	PRIVATE, AGE 44, 190 TOTAL HOURS, 34 IN TYPE, NOT INSTRUMENT RATED.
		DEPARTURE POINT BORREGO SPRINGS,CA	INTENDED DESTINATION CARLSBAD,CA			
		TYPE OF ACCIDENT COLLISION WITH GROUND/WATER	CONTROLLED		PHASE OF OPERATION IN FLIGHT NORMAL CRUISE	
		PROBABLE CAUSE(S) PILOT IN COMMAND - CONTINUED VFR FLIGHT INTO ADVERSE WEATHER CONDITIONS				
		FACTOR(S) PILOT IN COMMAND - INADEQUATE PREFLIGHT PREPARATION AND/OR PLANNING				
		WEATHER - LOW CEILING				
		WEATHER - FOG				
		TERRAIN - HIGH OBSTRUCTIONS				
		WEATHER BRIEFING - BRIEFED BY FLIGHT SERVICE PERSONNEL, BY PHONE				
		WEATHER FORECAST - FORECAST SUBSTANTIALLY CORRECT				
		MISSING AIRCRAFT - LATER RECOVERED				
		SKY CONDITION OBSCURATION			CEILING AT ACCIDENT SITE 0	
		VISIBILITY AT ACCIDENT SITE ZERO			PRECIPITATION AT ACCIDENT SITE NONE	
		OBSTRUCTIONS TO VISION AT ACCIDENT SITE FOG			TYPE OF WEATHER CONDITIONS IFR	
		TYPE OF FLIGHT PLAN NONE				
		REMARKS- RECOVERY DATE 11/21/76.				
3-4169	12/9/76	YOSEMITE,CA	HOWARD 500 NR08D DAMAGE-DESTROYED	CR- 2 0 0 PX- 0 0 0	MISCELLANEOUS OTHER	COMMERCIAL, FL.INSTR., AGE 29, 5000 TOTAL HOURS, UNK/NR IN TYPE, INSTRU- MENT RATED.
		DEPARTURE POINT BAJA,MEXICO	INTENDED DESTINATION RENO,NV			
		TYPE OF ACCIDENT AIRFRAME FAILURE	IN FLIGHT		PHASE OF OPERATION IN FLIGHT OTHER	
		PROBABLE CAUSE(S) MISCELLANEOUS - UNDETERMINED				
		FACTOR(S) AIRFRAME - WINGS WING ATTACHMENT FITTINGS,BOLTS				
		MISCELLANEOUS ACTS,CONDITIONS - OVERLOAD FAILURE				
		MISCELLANEOUS ACTS,CONDITIONS - SEPARATION IN FLIGHT				
		MISSING AIRCRAFT - LATER RECOVERED				
		REMARKS- RECOVERY DATE 6/14/77.TRANSPORTATION OF NARCOTICS.				

## BRIEFS OF ACCIDENTS

FILE	DATE	LOCATION	AIRCRAFT DATA	INJURIES			FLIGHT PURPOSE	PILOT DATA
				F	S	M/N		
3-3978	12/31/76	NR.BARSTOW,CA TIME - 1548	BEECH 95-B55 N4635S DAMAGE-DESTROYED INTENDED DESTINATION LAS VEGAS, NV	CR- 1 PX- 3	0 0	0 0	NONCOMMERCIAL PLEASURE/PERSONAL TRANSP	PRIVATE, AGE 40, 708 TOTAL HOURS, 89 IN TYPE, INSTRUMENT RATED.
		DEPARTURE POINT IRVINE,CA					PHASE OF OPERATION IN FLIGHT UNCONTROLLED DESCENT	
		TYPE OF ACCIDENT AIRFRAME FAILURE IN FLIGHT						
PROBABLE CAUSE(S)								
PILOT IN COMMAND - IMPROPER IN-FLIGHT DECISIONS OR PLANNING								
PILOT IN COMMAND - EXCEEDED DESIGNED STRESS LIMITS OF AIRCRAFT								
FACTOR(S)								
WEATHER - ICING CONDITIONS-INCLUDES SLEET,FREEZING RAIN,ETC.								
MISCELLANEOUS ACTS,CONDITIONS - AIRFRAME ICE								
MISCELLANEOUS ACTS,CONDITIONS - OVERLOAD FAILURE								
MISCELLANEOUS ACTS,CONDITIONS - SEPARATION IN FLIGHT								
WEATHER BRIEFING - BRIEFED BY FLIGHT SERVICE PERSONNEL, BY PHONE								
WEATHER FORECAST - FORECAST SUBSTANTIALLY CORRECT								
MISSING AIRCRAFT - LATER RECOVERED								
SKY CONDITION				CEILING AT ACCIDENT SITE				
OVERCAST				3000				
VISIBILITY AT ACCIDENT SITE				PRECIPITATION AT ACCIDENT SITE				
UNKNOWN/NOT REPORTED				RAIN, RAIN SHOWERS				
OBSTRUCTIONS TO VISION AT ACCIDENT SITE				WIND DIRECTION-DEGREES				
NONE				315				
WIND VELOCITY-KNOTS				TYPE OF WEATHER CONDITIONS				
17				IFR				
TYPE OF FLIGHT PLAN								
IFR								
REMARKS- RECOVERY DATE 1/1/77.AIRCRAFT FLEW INTO KNOWN ICING CONDITIONS. NO DE-ICING EQUIP INSTALLED.								

BRRIEFS OF ACCIDENTS

FILE	DATE	LOCATION	AIRCRAFT DATA	INJURIES F S M/N	FLIGHT PURPOSE	PILOT DATA
3-0496	2/28/76 TIME - 0942	NR. ESTES PARK, CO	BEECH R19 N4356W DAMAGE-DESTROYED	CR- 1 0 0 PX- 1 0 0	NONCOMMERCIAL PLEASURE/PERSONAL TRANSP	PRIVATE, AGE 38, 249 TOTAL HOURS, 9 IN TYPE, NOT INSTRUMENT RATED.
	DEPARTURE POINT BROOMFIELD, CO	INTENDED DESTINATION LOCAL			PHASE OF OPERATION IN FLIGHT OTHER	
	TYPE OF ACCIDENT STALL SPIRAL					
	PROBABLE CAUSE(S) PILOT IN COMMAND - DIVERTED ATTENTION FROM OPERATION OF AIRCRAFT PILOT IN COMMAND - IMPROPER OPERATION OF FLIGHT CONTROLS WEATHER - DOWNDRAFT, UPDRAFTS WEATHER BRIEFING - NO RECORD OF BRIEFING RECEIVED WEATHER FORECAST - FORECAST SUBSTANTIALLY CORRECT MISSING AIRCRAFT - LATER RECOVERED					
	SKY CONDITION CLEAR				CEILING AT ACCIDENT SITE UNLIMITED	
	VISIBILITY AT ACCIDENT SITE 5 OR OVER (UNLIMITED)				PRECIPITATION AT ACCIDENT SITE NONE	
	OBSTRUCTIONS TO VISION AT ACCIDENT SITE NONE				TEMPERATURE-F 50	
	WIND DIRECTION-DEGREES 225				WIND VELOCITY-KNOTS 40	
	TYPE OF WEATHER CONDITIONS VFR				TYPE OF FLIGHT PLAN NONE	
	REMARKS- RECOVERY DATE 2/29/76.					
3-0770	3/27/76 TIME - 1700	ATWOOD, CO	LUSCOMBE 8A N1004K DAMAGE-DESTROYED	CR- 1 0 0 PX- 1 0 0	NONCOMMERCIAL PLEASURE/PERSONAL TRANSP	PRIVATE, AGE 27, 75 TOTAL HOURS, UNK/NR IN TYPE, NOT INSTRUMENT RATED.
	DEPARTURE POINT STERLING, CO	INTENDED DESTINATION LOCAL			PHASE OF OPERATION IN FLIGHT BUZZING	
	TYPE OF ACCIDENT COLLIDED WITH WIRES/POLES					
	PROBABLE CAUSE(S) PILOT IN COMMAND - FAILED TO SEE AND AVOID OBJECTS OR OBSTRUCTIONS PILOT IN COMMAND - EXERCISED POOR JUDGMENT MISCELLANEOUS ACTS, CONDITIONS - UNWARRANTED LOW FLYING FACTOR(S) TERRAIN - HIGH OBSTRUCTIONS MISSING AIRCRAFT - LATER RECOVERED REMARKS- RECOVERY DATE 3/28/76. HIT PWR LINES 30FT AGL.					

BRIEFS OF ACCIDENTS

FILE	DATE	LOCATION	AIRCRAFT DATA	INJURIES F S M/N :	FLIGHT PURPOSE	PILOT DATA
3-0981	4/26/76	SIMLA,CO	PIPER PA-28 N1573X DAMAGE-DESTROYED	CR- 1 0 0 PX- 2 0 0	NONCOMMERCIAL PLEASURE/PERSONAL TRANSP	PRIVATE, AGE 34, 270 TOTAL HOURS, 8 IN TYPE, NOT INSTRUMENT RATED.
	TIME - 1645		INTENDED DESTINATION PEYTON,CO			
	DEPARTURE POINT OKLAHOMA CITY,OK				PHASE OF OPERATION IN FLIGHT NORMAL CRUISE	
	TYPE OF ACCIDENT COLLISION WITH GROUND/WATER		CONTROLLED			
	PROBABLE CAUSE(S) PILOT IN COMMAND - CONTINUED VFR FLIGHT INTO ADVERSE WEATHER CONDITIONS PILOT IN COMMAND - IMPROPER IN-FLIGHT DECISIONS OR PLANNING					
	FACTOR(S) WEATHER - LOW CEILING WEATHER - FOG					
	WEATHER BRIEFING - BRIEFED BY FLIGHT SERVICE PERSONNEL, BY PHONE WEATHER FORECAST - FORECAST SUBSTANTIALLY CORRECT MISSING AIRCRAFT - LATER RECOVERED					
	SKY CONDITION OVERCAST				CEILING AT ACCIDENT SITE UNKNOWN/NOT REPORTED	
	VISIBILITY AT ACCIDENT SITE 1/4 MILE OR LESS				PRECIPITATION AT ACCIDENT SITE NONE	
	OBSTRUCTIONS TO VISION AT ACCIDENT SITE FOG				TEMPERATURE-F 40	
	TYPE OF WEATHER CONDITIONS IFR				TYPE OF FLIGHT PLAN NONE	
	REMARKS- RECOVERY DATE 4/27/76.					



BRIEFS OF ACCIDENTS

FILE	DATE	LOCATION	AIRCRAFT DATA	INJURIES F S M/N	FLIGHT PURPOSE	PILOT DATA
3-3131	9/26/76 TIME - 1853	NR.PONCHA PASS.CO	CESSNA 182A N3764D DAMAGE-DESTROYED	CR- 0 0 1 PX- 0 0 1	NONCOMMERCIAL PLEASURE/PERSONAL TRANSP	PRIVATE, AGE 30, 195 TOTAL HOURS, 60 IN TYPF, NOT INSTRUMENT RATED.
		DEPARTURE POINT BLANDING,UT	INTENDED DESTINATION DENVER.CO			
		TYPE OF ACCIDENT COLLISION WITH GROUND/WATER CONTROLLED		PHASE OF OPERATION IN FLIGHT CLIMB TO CRUISE		
		PROBABLE CAUSE(S) PILOT IN COMMAND - INITIATED FLIGHT IN ADVERSE WEATHER CONDITIONS PILOT IN COMMAND - CONTINUED VFR FLIGHT INTO ADVERSE WEATHER CONDITIONS MISCELLANEOUS ACTS,CONDITIONS - DISREGARD OF GOOD OPERATING PRACTICE				
		FACTOR(S) WEATHER - ICING CONDITIONS-INCLUDES SLEET,FREEZING RAIN,ETC. WEATHER - SNOW TERRAIN - SNOW-COVERED WEATHER BRIEFING - BRIEFED BY FLIGHT SERVICE PERSONNEL, BY RADIO WEATHER FORECAST - UNKNOWN/NOT REPORTED MISSING AIRCRAFT - LATER RECOVERED				
		SKY CONDITION UNKNOWN/NOT REPORTED		CEILING AT ACCIDENT SITE UNKNOWN/NOT REPORTED		
		VISIBILITY AT ACCIDENT SITE ZERO		PRECIPITATION AT ACCIDENT SITE SNOW		
		OBSTRUCTIONS TO VISION AT ACCIDENT SITE UNKNOWN/NOT REPORTED		WIND DIRECTION-DEGREES 215		
		WIND VELOCITY-KNOTS 10		TYPE OF WEATHER CONDITIONS IFR		
		TYPE OF FLIGHT PLAN NONE				
		REMARKS- RECOVERY DATE 10/01/76. SNOW DEPTH 15IN. IMPACT SPEED 60MPH. SNOWING HARD. VIZ 150FT.				

BRIEFS OF ACCIDENTS

FILE	DATE	LOCATION	AIRCRAFT DATA	INJURIES			FLIGHT PURPOSE	PILOT DATA	
				F	S	M/N			
3-380H	12/19/76	ALDER, CO	GRUM AMER AA-1 N5679L	CR-	1	0	0	NONCOMMERCIAL	COMMERCIAL, AGE 31, 1200
	TIME - UNK/NR		DAMAGE-DESTROYED	PX-	2	0	0	PLEASURE/PERSONAL TRANSP	TOTAL HOURS, 800 IN TYPE, NOT INSTRUMENT RATED.
	DEPARTURE POINT		INTENDED DESTINATION					LAST ENROUTE STOP	
	RIDGECREST, CA		COLUMBUS, OH					GUNNISON, CO	
	TYPE OF ACCIDENT		UNCONTROLLED					PHASE OF OPERATION	
	COLLISION WITH GROUND/WATER							IN FLIGHT UNCONTROLLED DESCENT	
	PROBABLE CAUSE(S)								
	PILOT IN COMMAND - EXERCISED POOR JUDGMENT								
	PILOT IN COMMAND - IMPROPER IN-FLIGHT DECISIONS OR PLANNING								
	FACTOR(S)								
	WEATHER - DOWNDRAFT, UPDRAFTS								
	WEATHER BRIEFING - NO RECORD OF BRIEFING RECEIVED								
	WEATHER FORECAST - UNKNOWN/NOT REPORTED								
	MISSING AIRCRAFT - LATER RECOVERED								
	SKY CONDITION							CEILING AT ACCIDENT SITE	
	CLEAR							UNLIMITED	
	VISIBILITY AT ACCIDENT SITE							PRECIPITATION AT ACCIDENT SITE	
	5 OR OVER (UNLIMITED)							NONE	
	OBSTRUCTIONS TO VISION AT ACCIDENT SITE							TYPE OF WEATHER CONDITIONS	
	NONE							VFR	
	TYPE OF FLIGHT PLAN								
	NONE								
	REMARKS- ACFT SERVICE CEILING 11250FT. WRECKAGE RECOVERED 7/19/77 IN MTNS APRX 11500FT LEVEL.								
3-0255	2/4/76	NR. BRIDGEPORT, CT	CESSNA 150 N248Q	CR-	2	0	0	INSTRUCTIONAL	COMMERCIAL, AGE 43, 6000
	TIME - 0908		DAMAGE-DESTROYED	PX-	0	0	0	DUAL	TOTAL HOURS, UNK/NR IN TYPE, INSTRUMENT RATED.
	NAME OF AIRPORT - IGOR I SIKORSKY								
	DEPARTURE POINT		INTENDED DESTINATION						
	FARMINGDALE, NY		LOCAL						
	TYPE OF ACCIDENT							PHASE OF OPERATION	
	ENGINE FAILURE OR MALFUNCTION							IN FLIGHT OTHER	
	DITCHING							LANDING LEVEL OFF/TOUCHDOWN	
	PROBABLE CAUSE(S)								
	POWERPLANT - MISCELLANEOUS POWERPLANT FAILURE FOR UNDETERMINED REASONS								
	FACTOR(S)								
	MISCELLANEOUS ACTS, CONDITIONS - AIRCRAFT CAME TO REST IN WATER								
	MISSING AIRCRAFT - LATER RECOVERED								
	EMERGENCY CIRCUMSTANCES - FORCED LANDING OFF AIRPORT ON WATER								
	REMARKS- MAYDAY RCVD FM ACFT, 4 MILES FM CONNECTICUT SHORE. RECOVERY DATE 4/18/76.								

## BRIEFS OF ACCIDENTS

FILE	DATE	LOCATION	AIRCRAFT DATA	INJURIES F S M/N	FLIGHT PURPOSE	PILOT DATA
3-3995	12/28/76	NR.PERRY,FL	PIPER PA-11 N78A98	CR- 0 0 1 PX- 0 0 0	NONCOMMERCIAL PLEASURE/PERSONAL TRANSP	PRIVATE, AGF 25, 290 TOTAL HOURS, 262 IN TYPE, NOT INSTRUMENT RATED.
	TIME - 1800		DAMAGE-DESTROYED			
	DEPARTURE POINT		INTENDED DESTINATION		LAST ENROUTE STOP	
	HOLLYWOOD,FL		TALLAHASSEE,FL		CEDAR KEY,FL	
	TYPE OF ACCIDENT				PHASE OF OPERATION	
	COLLIDED WITH TREES				LANDING LEVEL OFF/TOUCHDOWN	
	PROBABLE CAUSE(S)					
	PILOT IN COMMAND - INADEQUATE PREFLIGHT PREPARATION AND/OR PLANNING					
	PILOT IN COMMAND - SELECTED UNSUITABLE TERRAIN					
	FACTOR(S)					
	WEATHER - LOW CEILING					
	WEATHER - RAIN					
	WEATHER - THUNDERSTORM ACTIVITY					
	TERRAIN - HIGH OBSTRUCTIONS					
	WEATHER BRIEFING - NO RECORD OF BRIEFING RECEIVED					
	WEATHER FORECAST - UNKNOWN/NOT REPORTED					
	MISSING AIRCRAFT - LATER RECOVERED					
	EMERGENCY CIRCUMSTANCES - PRECAUTIONARY LANDING OFF AIRPORT					
	ADVERSE/UNFAVORABLE WEATHER					
	SKY CONDITION				CEILING AT ACCIDENT SITE	
	UNKNOWN/NOT REPORTED				100	
	VISIBILITY AT ACCIDENT SITE				PRECIPITATION AT ACCIDENT SITE	
	1/4 MILE OR LESS				RAIN, THUNDERSTORM	
	OBSTRUCTIONS TO VISION AT ACCIDENT SITE				TEMPERATURE-F	
	NONE				65	
	TYPE OF WEATHER CONDITIONS				TYPE OF FLIGHT PLAN	
	IFR				NONE	
	REMARKS- WEA BRIEF FROM PLT WHO HAD PREV FLOWN ROUTE. LND IN SWAMP. NO RADIO ABD. RECOVERY DATE 12/29/76.					

## BRIEFS OF ACCIDENTS

FILE	DATE	LOCATION	AIRCRAFT DATA	INJURIES F S M/N	FLIGHT PURPOSE	PILOT DATA
3-0254	1/15/76 TIME - 1424	NR. OROFINO, ID	BELLANCA 17-30 N7385V DAMAGE-DESTROYED	CR- 1 0 0 PX- 2 0 0	COMMERCIAL AIR TAXI-PASSG	COMMERCIAL, FL. INSTR., AGE 34, 3968 TOTAL HOURS, 105 IN TYPE, INSTRUMENT RATED.
	DEPARTURE POINT BUTTE, MT TYPE OF ACCIDENT COLLISION WITH GROUND/WATER	INTENDED DESTINATION OROFINO, ID CONTROLLED		LAST ENROUTE STOP KODSKIA, ID PHASE OF OPERATION IN FLIGHT OTHER		
	PROBABLE CAUSE(S) PILOT IN COMMAND - IMPROPER IN-FLIGHT DECISIONS OR PLANNING PILOT IN COMMAND - CONTINUED VFR FLIGHT INTO ADVERSE WEATHER CONDITIONS FACTOR(S) WEATHER - LOW CEILING WEATHER - RAIN TERRAIN - HIGH OBSTRUCTIONS WEATHER BRIEFING - BRIEFED BY FLIGHT SERVICE PERSONNEL, IN PERSON WEATHER FORECAST - FORECAST SUBSTANTIALLY CORRECT MISSING AIRCRAFT - LATER RECOVERED					
	SKY CONDITION OBSCURATION VISIBILITY AT ACCIDENT SITE 3/4 MILE OR LESS OBSTRUCTIONS TO VISION AT ACCIDENT SITE FOG WIND VELOCITY-KNOTS CALM TYPE OF FLIGHT PLAN NONE			CEILING AT ACCIDENT SITE 1800 PRECIPITATION AT ACCIDENT SITE RAIN TEMPERATURE-F 38 TYPE OF WEATHER CONDITIONS IFR		
	REMARKS-	STRUCK TREES IN MOUNTAINOUS AREA AT 5700FT. NORTH OF PROPOSED RTE. FND UNDER V-187. RCVRD 7/10/76.				

## BRIEFS OF ACCIDENTS

FILE	DATE	LOCATION	AIRCRAFT DATA	INJURIES F S M/N			FLIGHT PURPOSE	PILOT DATA
3-0497	2/8/76	NR.PRESTON,ID	CESSNA 172 N5925R DAMAGE-SUBSTANTIAL	CR- 0 1 0	PX- 0 0 0	NONCOMMERCIAL PLEASURE/PERSONAL TRANSP	PRIVATE, AGE 25, 300 TOTAL HOURS, UNK/NR IN TYPE, NOT INSTRUMENT RATED.	
		DEPARTURE POINT BURNS,ID	INTENDED DESTINATION PRESTON,ID	LAST ENROUTE STOP BOISE,ID				
		TYPE OF ACCIDENT COLLISION WITH GROUND/WATER	UNCONTROLLED	PHASE OF OPERATION IN FLIGHT UNCONTROLLED DESCENT				
		PROBABLE CAUSE(S) PILOT IN COMMAND - CONTINUED VFR FLIGHT INTO ADVERSE WEATHER CONDITIONS PILOT IN COMMAND - SPATIAL DISORIENTATION						
		FACTOR(S) WEATHER - LOW CEILING WEATHER - SNOW TERRAIN - HIGH OBSTRUCTIONS						
		WEATHER BRIEFING - BRIEFED BY FLIGHT SERVICE PERSONNEL, BY PHONE WEATHER FORECAST - FORECAST SUBSTANTIALLY CORRECT MISSING AIRCRAFT - LATER RECOVERED						
		SKY CONDITION BROKEN/LOWER SCATTERED		CEILING AT ACCIDENT SITE 400				
		VISIBILITY AT ACCIDENT SITE 1/2 MILE OR LESS		PRECIPITATION AT ACCIDENT SITE SNOW SHOWERS				
		OBSTRUCTIONS TO VISION AT ACCIDENT SITE FOG		TEMPERATURE-F 27				
		TYPE OF WEATHER CONDITIONS IFR		TYPE OF FLIGHT PLAN VFR				
		REMARKS- RECOVERY DATE 2/10/76.						
3-0953	5/21/76	WEISER,ID	CESSNA 172K N7148G DAMAGE-DESTROYED	CR- 2 0 0	PX- 0 0 0	NONCOMMERCIAL PLEASURE/PERSONAL TRANSP	PRIVATE, AGE 18, 72 TOTAL HOURS, 69 IN TYPE, NOT INSTRUMENT RATED.	
		NAME OF AIRPORT - WEISER MIUNI		LAST ENROUTE STOP WEISER,ID				
		DEPARTURE POINT ONTARIO,OR	INTENDED DESTINATION UNKNOWN/NOT REPORTED	PHASE OF OPERATION IN FLIGHT LOW PASS				
		TYPE OF ACCIDENT COLLIDED WITH WIRES/POLES						
		PROBABLE CAUSE(S) PILOT IN COMMAND - IMPROPER IN-FLIGHT DECISIONS OR PLANNING PILOT IN COMMAND - FAILED TO SEE AND AVOID OBJECTS OR OBSTRUCTIONS MISCELLANEOUS ACTS,CONDITIONS - UNWARRANTED LOW FLYING						
		FACTOR(S) MISCELLANEOUS ACTS,CONDITIONS - STOLEN OR UNAUTHORIZED USE OF AIRCRAFT TERRAIN - HIGH OBSTRUCTIONS MISCELLANEOUS ACTS,CONDITIONS - AIRCRAFT CAME TO REST IN WATER MISSING AIRCRAFT - LATER RECOVERED						
		REMARKS- HIT WIRES 30FT ABOVE RIVER. RECOVERY DATE 5/23/76. UNAUTH FLT.						

BRIEFS OF ACCIDENTS

FILE	DATE	LOCATION	AIRCRAFT DATA	INJURIES F S M/N	FLIGHT PURPOSE	PILOT DATA
3-3430	8/25/76	NR.SALMON, ID	CESSNA TU206E N1383M	CR- 1 0 0 PX- 0 0 0	COMMERCIAL AIR TAXI-CARGO	COMMERCIAL, AGE 38, 1300 TOTAL HOURS, 271 IN TYPE, INSTRUMENT RATED.
		DEPARTURE POINT SALMON, ID	INTENDED DESTINATION ROOT RANCH, ID			
		TYPE OF ACCIDENT COLLISION WITH GROUND/WATER	UNCONTROLLED		PHASE OF OPERATION IN FLIGHT UNCONTROLLED DESCENT	
		PROBABLE CAUSE(S) PILOT IN COMMAND - INITIATED FLIGHT IN ADVERSE WEATHER CONDITIONS WEATHER - TURBULENCE, ASSOCIATED W/CLOUDS AND/OR THUNDERSTORMS WEATHER - THUNDERSTORM ACTIVITY MISCELLANEOUS ACTS, CONDITIONS - CARGO SHIFTED				
		FACTOR(S) PILOT IN COMMAND - INADEQUATE PREFLIGHT PREPARATION AND/OR PLANNING TERRAIN - HIGH OBSTRUCTIONS WEATHER BRIEFING - BRIEFED BY FLIGHT SERVICE PERSONNEL, BY PHONE WEATHER FORECAST - FORECAST SUBSTANTIALLY CORRECT MISSING AIRCRAFT - LATER RECOVERED				
		SKY CONDITION SCATTERED			CEILING AT ACCIDENT SITE 8000	
		VISIBILITY AT ACCIDENT SITE 5 OR OVER (UNLIMITED)			PRECIPITATION AT ACCIDENT SITE RAIN SHOWERS	
		OBSTRUCTIONS TO VISION AT ACCIDENT SITE UNKNOWN/NOT REPORTED			TEMPERATURE-F 63	
		WIND DIRECTION-DEGREES 220			WIND VELOCITY-KNOTS 10	
		TYPE OF WEATHER CONDITIONS UNKNOWN/NOT REPORTED			TYPE OF FLIGHT PLAN NONE	
		REMARKS- RECOVERY DATE 8/30/76. PLT OBTND WEA BRFG 1541 MOT. CARGO NOT SECURED.				

BRIEFS OF ACCIDENTS

FILE	DATE	LOCATION	AIRCRAFT DATA	INJURIES F S M/N	FLIGHT PURPOSE	PILOT DATA
3-3906	11/22/76 TIME - 1753	NR.SANDPOINT,ID	PIPER PA-28R N15987 DAMAGF-DESTROYED	CR- 1 0 0 PX- 0 0 0	INSTRUCTIONAL TRAINING	PRIVATE, AGE 31, 168 TOTAL HOURS, 13 IN TYPF, NOT INSTRUMENT RATED.
		NAME OF AIRPORT - CITY-COUNTY DEPARTURE POINT OLYMPIA,WA TYPE OF ACCIDENT COLLIDED WITH TREES	INTENDED DESTINATION DEER LODGE,MT		LAST ENROUTE STOP SPOKANE,WA PHASE OF OPERATION IN FLIGHT DESCENDING	
		PROBABLE CAUSE(S) PILOT IN COMMAND - ATTEMPTED OPERATION BEYOND EXPERIENCE/ABILITY LEVEL PILOT IN COMMAND - BECAME LOST/DISORIENTED				
		FACTOR(S) PERSONNEL - FLIGHT INSTRUCTOR INADEQUATE SUPERVISION OF FLIGHT WEATHER - FOG TERRAIN - HIGH OBSTRUCTIONS				
		WEATHER BRIEFING - PARTIAL BRIEFING BY WEATHER BUREAU PERSONNEL, BY PHONE, LIMITED BY PILOT ACTION WEATHER FORECAST - FORECAST SUBSTANTIALLY CORRECT MISSING AIRCRAFT - LATER RECOVERED				
		SKY CONDITION UNKNOWN/NOT REPORTED VISIBILITY AT ACCIDENT SITE 5 OR OVER (UNLIMITED) OBSTRUCTIONS TO VISION AT ACCIDENT SITE FOG TYPE OF WEATHER CONDITIONS UNKNOWN/NOT REPORTED			CEILING AT ACCIDENT SITE UNKNOWN/NOT REPORTED PRECIPITATION AT ACCIDENT SITE NONE TEMPERATURE-F 33 TYPE OF FLIGHT PLAN NONE	
		REMARKS- TRAINING FOR COMMERCIAL & INSTRUMENT RATING.RECOVERY DATE 11/26/76.				
3-4138	10/3/76 TIME - 0010	MANTENO,IL	CESSNA 177B N34434 DAMAGE-DESTROYED	CR- 1 0 0 PX- 0 1 0	NONCOMMERCIAL PLEASURE/PERSONAL TRANSP	PRIVATE, AGE 44, 134 TOTAL HOURS, 64 IN TYPF, NOT INSTRUMENT RATED.
		DEPARTURE POINT MATTOON,IL TYPE OF ACCIDENT COLLISION WITH GROUND/WATER UNCONTROLLED	INTENDED DESTINATION FRANKFORT,IL		PHASE OF OPERATION IN FLIGHT UNCONTROLLED DESCENT	
		MISSING AIRCRAFT - LATER RECOVERED REMARKS- UNDER INVESTIGATION.				

## BRIEFS OF ACCIDENTS

FILE	DATE	LOCATION	AIRCRAFT DATA	INJURIES F S M/N	FLIGHT PURPOSE	PILOT DATA
3-3879	12/11/76	VANDALIA, IL	CESSNA 172M N64024 DAMAGE-DESTROYED	CR- 1 0 0 PX- 2 0 0	NONCOMMERCIAL PLEASURE/PERSONAL TRANSP	PRIVATE, AGE 52, 228 TOTAL HOURS, 25 IN TYPE, NOT INSTRUMENT RATED.
	TIME - 1859		INTENDED DESTINATION CHICAGO, IL		PHASE OF OPERATION IN FLIGHT UNCONTROLLED DESCENT	
	DEPARTURE POINT PERRYVILLE, MO					
	TYPE OF ACCIDENT COLLISION WITH GROUND/WATER UNCONTROLLED					
	PROBABLE CAUSE(S) PILOT IN COMMAND - INADEQUATE PREFLIGHT PREPARATION AND/OR PLANNING PILOT IN COMMAND - CONTINUED VFR FLIGHT INTO ADVERSE WEATHER CONDITIONS PILOT IN COMMAND - SPATIAL DISORIENTATION					
	FACTOR(S) WEATHER - LOW CEILING WEATHER - RAIN					
	WEATHER BRIEFING - NO RECORD OF BRIEFING RECEIVED WEATHER FORECAST - FORECAST SUBSTANTIALLY CORRECT MISSING AIRCRAFT - LATER RECOVERED					
	SKY CONDITION OVERCAST				CEILING AT ACCIDENT SITE UNKNOWN/NOT REPORTED	
	VISIBILITY AT ACCIDENT SITE 4 MILES OR LESS				PRECIPITATION AT ACCIDENT SITE DRIZZLE	
	OBSTRUCTIONS TO VISION AT ACCIDENT SITE FOG				TYPE OF WEATHER CONDITIONS IFR	
	TYPE OF FLIGHT PLAN NONE					
	REMARKS- RECOVERY DATE 12/12/76.					



BRIEFS OF ACCIDENTS

FILE	DATE	LOCATION	AIRCRAFT DATA	INJURIES F S M/N	FLIGHT PURPOSE	PILOT DATA
3-3627	1/25/76	NR. JENA, LA TIME - 1015	CESSNA 210 N9490T DAMAGE-DESTROYED	CR- 1 0 0 PX- 1 0 0	NONCOMMERCIAL PLEASURE/PERSONAL TRANSP	PRIVATE, AGE 52, 9000 TOTAL HOURS, UNK/NR IN TYPE, NOT INSTRUMENT RATED.
		DEPARTURE POINT NEW ORLEANS, LA	INTENDED DESTINATION UNKNOWN/NOT REPORTED	PHASE OF OPERATION IN FLIGHT NORMAL CRUISE		
		TYPE OF ACCIDENT COLLIDED WITH TREES				
PROBABLE CAUSE(S) PILOT IN COMMAND - CONTINUED VFR FLIGHT INTO ADVERSE WEATHER CONDITIONS						
FACTOR(S) WEATHER - LOW CEILING WEATHER - FOG PILOT IN COMMAND - INADEQUATE PREFLIGHT PREPARATION AND/OR PLANNING WEATHER BRIEFING - NO RECORD OF BRIEFING RECEIVED WEATHER FORECAST - FORECAST SUBSTANTIALLY CORRECT MISSING AIRCRAFT - LATER RECOVERED						
SKY CONDITION OVERCAST			CEILING AT ACCIDENT SITE 600			
VISIBILITY AT ACCIDENT SITE 2 MILES OR LESS			PRECIPITATION AT ACCIDENT SITE RAIN SHOWERS			
OBSTRUCTIONS TO VISION AT ACCIDENT SITE FOG			TEMPERATURE-F 63			
WIND DIRECTION-DEGREES 160			WIND VELOCITY-KNOTS 15			
TYPE OF WEATHER CONDITIONS IFR			TYPE OF FLIGHT PLAN NONE			
REMARKS- RECOVERY DATE 10/10/76.						

## BRIEFS OF ACCIDENTS

FILE	DATE	LOCATION	AIRCRAFT DATA	INJURIES			FLIGHT PURPOSE	PILOT DATA
				F	S	M/N		
3-0100	3/5/76	PLYMOUTH, MA	CESSNA 150L N1939B	CR- 1	0	0	NONCOMMERCIAL	PRIVATE, AGE 61, 400
	TIME - UNK/NR		DAMAGE-SUBSTANTIAL	PX- 1	0	0	PLEASURE/PERSONAL TRANSP	TOTAL HOURS, 115 IN TYPE, NOT INSTRUMENT RATED.
	DEPARTURE POINT		INTENDED DESTINATION					
	PLYMOUTH, MA		LOCAL					
	TYPE OF ACCIDENT						PHASE OF OPERATION	
	COLLIDED WITH WIRES/POLES						IN FLIGHT OTHER	
	PROBABLE CAUSE(S)							
	PILOT IN COMMAND - INADEQUATE PREFLIGHT PREPARATION AND/OR PLANNING							
	PILOT IN COMMAND - CONTINUED VFR FLIGHT INTO ADVERSE WEATHER CONDITIONS							
	PILOT IN COMMAND - FAILED TO SEE AND AVOID OBJECTS OR OBSTRUCTIONS							
	FACTOR(S)							
	WEATHER - LOW CEILING							
	WEATHER - SNOW							
	WEATHER - FOG							
	TERRAIN - HIGH OBSTRUCTIONS							
	WEATHER BRIEFING - NO RECORD OF BRIEFING RECEIVED							
	WEATHER FORECAST - UNKNOWN/NOT REPORTED							
	MISSING AIRCRAFT - LATER RECOVERED							
	SKY CONDITION						CEILING AT ACCIDENT SITE	
	UNKNOWN/NOT REPORTED						200	
	VISIBILITY AT ACCIDENT SITE						PRECIPITATION AT ACCIDENT SITE	
	1/2 MILE OR LESS						RAIN, SNOW	
	OBSTRUCTIONS TO VISION AT ACCIDENT SITE						WIND DIRECTION-DEGREES	
	FOG						220	
	WIND VELOCITY-KNOTS						TYPE OF WEATHER CONDITIONS	
	20						IFR	
	TYPE OF FLIGHT PLAN							
	NONE							
	REMARKS- NON INST PLT ENTRD IFR WX COND.HIT PWR LINE.							

## BRIEFS OF ACCIDENTS

FILE	DATE	LOCATION	AIRCRAFT DATA	INJURIES F S M/N	FLIGHT PURPOSE	PILOT DATA
3-3466	6/18/76	NR.GADWIN,MI	PIPER PA-22 N2227A	CR- 1 0 0 PX- 1 0 0	NONCOMMERCIAL PLEASURE/PERSONAL TRANSP	PRIVATE, AGE 52, 346 TOTAL HOURS, 99 IN TYPE, NOT INSTRUMENT RATED.
		DEPARTURE POINT SAGINAW,MI	INTENDED DESTINATION HOUGHTON LAKE,MI		LAST ENROUTE STOP PINCONNING,MI	
		TYPE OF ACCIDENT COLLISION WITH GROUND/WATER	UNCONTROLLED		PHASE OF OPERATION IN FLIGHT UNCONTROLLED DESCENT	
		PROBABLE CAUSE(S) PILOT IN COMMAND - INITIATED FLIGHT IN ADVERSE WEATHER CONDITIONS PILOT IN COMMAND - SPATIAL DISORIENTATION				
		FACTOR(S) WEATHER - LOW CEILING WEATHER - RAIN WEATHER - THUNDERSTORM ACTIVITY WEATHER BRIEFING - NO RECORD OF BRIEFING RECEIVED WEATHER FORECAST - FORECAST SUBSTANTIALLY CORRECT MISSING AIRCRAFT - LATER RECOVERED				
		SKY CONDITION UNKNOWN/NOT REPORTED			CEILING AT ACCIDENT SITE UNKNOWN/NOT REPORTED	
		VISIBILITY AT ACCIDENT SITE UNKNOWN/NOT REPORTED			PRECIPITATION AT ACCIDENT SITE RAIN, THUNDERSTORM	
		OBSTRUCTIONS TO VISION AT ACCIDENT SITE UNKNOWN/NOT REPORTED			TYPE OF WEATHER CONDITIONS IFR	
		TYPE OF FLIGHT PLAN NONE				
		FIRE AFTER IMPACT REMARKS- WITNESS REPORTED HEAVY RAIN,LOW CEILINGS & VISIBILITIES.RECOVERED 10/9/76.				

## BRIEFS OF ACCIDENTS

FILE	DATE	LOCATION	AIRCRAFT DATA	INJURIES F S M/N	FLIGHT PURPOSE	PILOT DATA
3-4148	9/20/76 TIME - 2100	L'ANSE,MI	BEECH 95 N2080C DAMAGE-DESTROYED	CR- 1 0 0 PX- 1 0 0	NONCOMMERCIAL BUSINESS	PRIVATE, AGE 51, UNK/NR TOTAL HOURS, UNK/NR IN TYPE, NOT INSTRUMENT RATED.
	DEPARTURE POINT LAKEVIEW,MI		INTENDED DESTINATION HOUGHTON,MI			
	TYPE OF ACCIDENT COLLISION WITH GROUND/WATER		UNCONTROLLED		PHASE OF OPERATION IN FLIGHT UNCONTROLLED DESCENT	
	PROBABLE CAUSE(S) PILOT IN COMMAND - CONTINUED VFR FLIGHT INTO ADVERSE WEATHER CONDITIONS PILOT IN COMMAND - SPATIAL DISORIENTATION					
	FACTOR(S) WEATHER - LOW CEILING WEATHER - RAIN WEATHER - TURBULENCE, ASSOCIATED W/CLOUDS AND/OR THUNDERSTORMS WEATHER - THUNDERSTORM ACTIVITY WEATHER BRIEFING - PARTIAL BRIEFING BY FLIGHT SERVICE PERSONNEL, BY PHONE/RADIO, LIMITED BY PILOT ACTION WEATHER FORECAST - WEATHER CONSIDERABLY WORSE THAN FORECAST MISSING AIRCRAFT - LATER RECOVERED					
	SKY CONDITION BROKEN VISIBILITY AT ACCIDENT SITE 5 OR OVER(UNLIMITED) OBSTRUCTIONS TO VISION AT ACCIDENT SITE NONE WIND DIRECTION-DEGREES 320 TYPE OF WEATHER CONDITIONS IFR				CEILING AT ACCIDENT SITE 900 PRECIPITATION AT ACCIDENT SITE RAIN, THUNDERSTORM TEMPERATURE-F 47 WIND VELOCITY-KNOTS 10 TYPE OF FLIGHT PLAN NONE	
	REMARKS- RECOVERY DATE 11/15/76.					

## BRIEFS OF ACCIDENTS

FILE	DATE	LOCATION	AIRCRAFT DATA	INJURIES F S M/N	FLIGHT PURPOSE	PILOT DATA
3-4127	12/19/76	PALO,MI	ERCO 415-C N99258 DAMAGE-DESTROYED	CR- 1 0 0 PX- 0 0 0	NONCOMMERCIAL PLEASURE/PERSONAL TRANSP	PRIVATE, AGE 47, 205 TOTAL HOURS, 113 IN TYPE, NOT INSTRUMENT RATED.
		DEPARTURE POINT HASTINGS,MI	INTENDED DESTINATION RETURN		LAST ENROUTE STOP GREENVILLE,MI	
		TYPE OF ACCIDENT COLLISION WITH GROUND/WATER	UNCONTROLLED		PHASE OF OPERATION IN FLIGHT UNCONTROLLED DESCENT	
		PROBABLE CAUSE(S) PILOT IN COMMAND - INADEQUATE PREFLIGHT PREPARATION AND/OR PLANNING PILOT IN COMMAND - INITIATED FLIGHT IN ADVERSE WEATHER CONDITIONS PILOT IN COMMAND - SPATIAL DISORIENTATION				
		FACTOR(S) WEATHER - LOW CEILING WEATHER - RAIN WEATHER - FOG				
		WEATHER BRIEFING - NO RECORD OF BRIEFING RECEIVED WEATHER FORECAST - FORECAST SUBSTANTIALLY CORRECT MISSING AIRCRAFT - LATER RECOVERED				
		SKY CONDITION OVERCAST			CEILING AT ACCIDENT SITE 600	
		VISIBILITY AT ACCIDENT SITE 2 MILES OR LESS			PRECIPITATION AT ACCIDENT SITE DRIZZLE	
		OBSTRUCTIONS TO VISION AT ACCIDENT SITE FOG			TYPE OF WEATHER CONDITIONS IFR	
		TYPE OF FLIGHT PLAN NONE				
		REMARKS- NO WX BRIEF RECVD				
3-1877	7/13/76	NR.HELENA,MT	PIPER PA-18 N7490L DAMAGE-DESTROYED	CR- 1 0 0 PX- 1 0 0	NONCOMMERCIAL OTHER	PRIVATE, AGE 57, 2300 TOTAL HOURS, 1500 IN TYPE, INSTRUMENT RATED.
		DEPARTURE POINT CRAIG,MT	INTENDED DESTINATION LOCAL			
		TYPE OF ACCIDENT COLLIDED WITH WIRES/POLES			PHASE OF OPERATION IN FLIGHT NORMAL CRUISE	
		PROBABLE CAUSE(S) PILOT IN COMMAND - FAILED TO SEE AND AVOID OBJECTS OR OBSTRUCTIONS MISSING AIRCRAFT - LATER RECOVERED				
		REMARKS- FLT IN SEARCH FOR CATTLE. ACFT STRUCK UNMRKD PWRLN. RECOVERY DATE JUL 14.				

## BRIEFS OF ACCIDENTS

FILE	DATE	LOCATION	AIRCRAFT DATA	INJURIES			FLIGHT PURPOSE	PILOT DATA	
				F	S	M/N			
3-4017	12/22/76	NR.EMPIRE,NV	CESSNA 172M N12364 DAMAGE-DESTROYED	CR-	1	0	0	NONCOMMERCIAL	PRIVATE, AGE 60, 1036 TOTAL HOURS, 14 IN TYPE, NOT INSTRUMENT RATED.
	TIME - 1430			PX-	0	0	0	PLEASURE/PERSONAL TRANSP	
		NAME OF AIRPORT - GERLACH STRIP							
		DEPARTURE POINT	INTENDED DESTINATION						
		GERLACH,NV	RENO,NV						
		TYPE OF ACCIDENT						PHASE OF OPERATION	
		COLLISION WITH GROUND/WATER	UNCONTROLLED					IN FLIGHT UNCONTROLLED DESCENT	
		PROBABLE CAUSE(S)							
		PILOT IN COMMAND - INCAPACITATION							
		MISCELLANEOUS ACTS,CONDITIONS - ALCOHOLIC IMPAIRMENT OF EFFICIENCY AND JUDGMENT							
		MISSING AIRCRAFT - LATER RECOVERED							
		REMARKS- PLT BLOOD ALCOHOL 0.374%. RECOVERED 12/25/76.							
3-0183	1/6/76	NR.GRANTS,NM	PIPER PA-23 N5258Y DAMAGE-DESTROYED	CR-	1	0	0	COMMERCIAL	COMMERCIAL, AGE 55, 10400 TOTAL HOURS, 2500 IN TYPE, INSTRUMENT RATED.
	TIME - 2015			PX-	3	0	0	AIR TAXI-PASSG	
		DEPARTURE POINT	INTENDED DESTINATION						
		ALBUQUERQUE,NM	GALLUP,NM						
		TYPE OF ACCIDENT						PHASE OF OPERATION	
		COLLISION WITH GROUND/WATER	CONTROLLED					IN FLIGHT NORMAL CRUISE	
		PROBABLE CAUSE(S)							
		PILOT IN COMMAND - CONTINUED VFR FLIGHT INTO ADVERSE WEATHER CONDITIONS							
		PILOT IN COMMAND - IMPROPER IN-FLIGHT DECISIONS OR PLANNING							
		FACTOR(S)							
		WEATHER - LOW CEILING							
		WEATHER - SNOW							
		MISCELLANEOUS ACTS,CONDITIONS - DISREGARD OF GOOD OPERATING PRACTICE							
		WEATHER BRIEFING - BRIEFED BY FLIGHT SERVICE PERSONNEL, BY PHONE							
		WEATHER FORECAST - FORECAST SUBSTANTIALLY CORRECT							
		MISSING AIRCRAFT - LATER RECOVERED							
		SKY CONDITION						CEILING AT ACCIDENT SITE	
		OBSCURATION						UNKNOWN/NOT REPORTED	
		VISIBILITY AT ACCIDENT SITE						PRECIPITATION AT ACCIDENT SITE	
		1/2 MILE OR LESS						SNOW, SNOW SHOWERS	
		OBSTRUCTIONS TO VISION AT ACCIDENT SITE						TEMPERATURE-F	
		BLOWING SAND						30	
		WIND DIRECTION-DEGREES						WIND VELOCITY-KNOTS	
		270						30	
		TYPE OF WEATHER CONDITIONS						TYPE OF FLIGHT PLAN	
		IFR						VFR	
		REMARKS- RECOVERY DATE 1/7/76.SNOWSHOWERS IN AREA.LOW GROUND VISIBILITY CONDITIONS AT TIME OF ACCOT.							

BRIEFS OF ACCIDENTS

FILE	DATE	LOCATION	AIRCRAFT DATA	INJURIES F S M/N	FLIGHT PURPOSE	PILOT DATA
3-0501	3/6/76	NR.SAN YSIDRO,NM	CESSNA 182 N5537B	CR- 1 0 0 PX- 1 0 0	NONCOMMERCIAL PLEASURE/PERSONAL TRANSP	PRIVATE, AGE 27, 215 TOTAL HOURS, 60 IN TYPE, NOT INSTRUMENT RATED.
		DEPARTURE POINT ALBUQUERQUE,NM	DAMAGE-DESTROYED INTENDED DESTINATION DURANGO,CO		PHASE OF OPERATION IN FLIGHT UNCONTROLLED DESCENT	
		TYPE OF ACCIDENT COLLISION WITH GROUND/WATER	UNCONTROLLED			
		PROBABLE CAUSE(S) PILOT IN COMMAND - SPATIAL DISORIENTATION				
		FACTOR(S) TERRAIN - OTHER				
		MISSING AIRCRAFT - LATER RECOVERED				
		REMARKS- RECOVERY DATE 3/7/76. SPARSELY LTD TERRAIN IN AREA.				
3-1882	3/29/76	RUIDOSO,NM	CESSNA 340 - N4098L	CR- 1 0 0 PX- 1 0 0	NONCOMMERCIAL PLEASURE/PERSONAL TRANSP	PRIVATE, AGE 43, 1056 TOTAL HOURS, 336 IN TYPE, NOT INSTRUMENT RATED.
		NAME OF AIRPORT - RUIDOSO MUNI DEPARTURE POINT RUIDOSO,NM	DAMAGE-DESTROYED INTENDED DESTINATION ALBUQUERQUE,NM		LAST ENROUTE STOP UNKNOWN/NOT REPORTED	
		TYPE OF ACCIDENT COLLIDED WITH TREES			PHASE OF OPERATION TAKEOFF INITIAL CLIMB	
		PROBABLE CAUSE(S) PILOT IN COMMAND - INITIATED FLIGHT IN ADVERSE WEATHER CONDITIONS				
		PILOT IN COMMAND - IMPROPER IN-FLIGHT DECISIONS OR PLANNING				
		PILOT IN COMMAND - INADEQUATE PREFLIGHT PREPARATION AND/OR PLANNING				
		FACTOR(S) TERRAIN - HIGH OBSTRUCTIONS				
		WEATHER - LOW CEILING				
		WEATHER BRIEFING - NO RECORD OF BRIEFING RECEIVED				
		WEATHER FORECAST - UNKNOWN/NOT REPORTED				
		MISSING AIRCRAFT - LATER RECOVERED				
		SKY CONDITION OBSCURATION			CEILING AT ACCIDENT SITE UNKNOWN/NOT REPORTED	
		VISIBILITY AT ACCIDENT SITE ZERO			PRECIPITATION AT ACCIDENT SITE UNKNOWN/NOT REPORTED	
		OBSTRUCTIONS TO VISION AT ACCIDENT SITE FOG			TYPE OF WEATHER CONDITIONS BELOW MINIMUMS	
		TYPE OF FLIGHT PLAN NONE				
		FIRE AFTER IMPACT				
		REMARKS- RECOVERY DATE 3/30/76.				

## BRIEFS OF ACCIDENTS

FILE	DATE	LOCATION	AIRCRAFT DATA	INJURIES F S M/N	FLIGHT PURPOSE	PILOT DATA
3-0943	4/19/76 TIME - 0130	NR.ALBUQUERQUE,NM	CESSNA 172 N6741A DAMAGE-SUBSTANTIAL	CR- 0 1 0 PX- 0 0 1	NONCOMMERCIAL PLEASURE/PERSONAL TRANSP	STUDENT, AGE 38, 92 TOTAL HOURS, ALL IN TYPE, NOT INSTRUMENT RATED.
	DEPARTURE POINT WICHITA,KS		INTENDED DESTINATION PHOENIX,AZ		LAST ENROUTE STOP ALBUQUERQUE,NM	
	TYPE OF ACCIDENT COLLISION WITH GROUND/WATER		UNCONTROLLED		PHASE OF OPERATION IN FLIGHT UNCONTROLLED DESCENT	
	PROBABLE CAUSE(S) PILOT IN COMMAND - CONTINUED VFR FLIGHT INTO ADVERSE WEATHER CONDITIONS PILOT IN COMMAND - SPATIAL DISORIENTATION PILOT IN COMMAND - ATTEMPTED OPERATION BEYOND EXPERIENCE/ABILITY LEVEL					
	FACTOR(S) MISCELLANEOUS ACTS,CONDITIONS - DISREGARD OF GOOD OPERATING PRACTICE WEATHER - LOW CEILING WEATHER - SNOW WEATHER BRIEFING - BRIEFING RECEIVED-METHOD UNKNOWN WEATHER FORECAST - UNKNOWN/NOT REPORTED MISSING AIRCRAFT - LATER RECOVERED					
	SKY CONDITION UNKNOWN/NOT REPORTED VISIBILITY AT ACCIDENT SITE ZERO OBSTRUCTIONS TO VISION AT ACCIDENT SITE BLOWING SNOW WIND VELOCITY-KNOTS 12 TYPE OF FLIGHT PLAN NONE				CEILING AT ACCIDENT SITE UNKNOWN/NOT REPORTED PRECIPITATION AT ACCIDENT SITE SNOW SHOWERS WIND DIRECTION-DEGREES 330 TYPE OF WEATHER CONDITIONS IFR	
	REMARKS- UNAUTH STUDENT X-C FLT.					
3-3798	11/19/76 TIME - 1810	NR.TAOS,NM	BELLANCA 17-30A N4027B DAMAGE-DESTROYED	CR- 1 0 0 PX- 1 0 0	NONCOMMERCIAL PLEASURE/PERSONAL TRANSP	PRIVATE, AGE 59, 4500 TOTAL HOURS, UNK/NR IN TYPE, NOT INSTRUMENT RATED.
	DEPARTURE POINT AMARILLO, TX		INTENDED DESTINATION TAOS,NM		PHASE OF OPERATION IN FLIGHT NORMAL CRUISE	
	TYPE OF ACCIDENT COLLISION WITH GROUND/WATER		CONTROLLED			
	PROBABLE CAUSE(S) PILOT IN COMMAND - IMPROPER IN-FLIGHT DECISIONS OR PLANNING MISSING AIRCRAFT - LATER RECOVERED					
	REMARKS- RECOVERY DATE 122676 SELECTED ENROUTE ALTITUDE BELOW OBSTRUCTING TERRAIN					



BRIEFS OF ACCIDENTS

FILE	DATE	LOCATION	AIRCRAFT DATA	INJURIES F S M/N	FLIGHT PURPOSE	PILOT DATA
3-4075	11/26/76	NR.FARMINGTON,NM TIME - 1746	PIPER PA-28 N4208F DAMAGE-DESTROYED INTENDED DESTINATION AZTEC,NM	CR- 1 0 0 PX- 1 0 0	NONCOMMERCIAL PLEASURE/PERSONAL TRANSP	PRIVATE, AGE 45, 209 TOTAL HOURS, 53 IN TYPE, NOT INSTRUMENT RATED.
		DEPARTURE POINT ROSWELL,NM			PHASE OF OPERATION IN FLIGHT UNCONTROLLED DESCENT	
		TYPE OF ACCIDENT COLLISION WITH GROUND/WATER	UNCONTROLLED			
		PROBABLE CAUSE(S) PILOT IN COMMAND - INADEQUATE PREFLIGHT PREPARATION AND/OR PLANNING PILOT IN COMMAND - BECAME LOST/DISORIENTED PILOT IN COMMAND - CONTINUED VFR FLIGHT INTO ADVERSE WEATHER CONDITIONS PILOT IN COMMAND - SPATIAL DISORIENTATION				
		FACTOR(S) PERSONNEL - TRAFFIC CONTROL PERSONNEL FAILURE TO ADVISE OF UNSAFE WEATHER CONDITIONS WEATHER - LOW CEILING WEATHER BRIEFING - NO RECORD OF BRIEFING RECEIVED WEATHER FORECAST - FORECAST SUBSTANTIALLY CORRECT MISSING AIRCRAFT - LATER RECOVERED				
		SKY CONDITION OVERCAST			CEILING AT ACCIDENT SITE 3800	
		VISIBILITY AT ACCIDENT SITE UNKNOWN/NOT REPORTED			PRECIPITATION AT ACCIDENT SITE SNOW SHOWERS	
		OBSTRUCTIONS TO VISION AT ACCIDENT SITE UNKNOWN/NOT REPORTED			TYPE OF WEATHER CONDITIONS IFR	
		TYPE OF FLIGHT PLAN VFR				
		REMARKS- RECOVERY DATE 12/3/76.				

## BRIEFS OF ACCIDENTS

FILE	DATE	LOCATION	AIRCRAFT DATA	INJURIES F S M/N	FLIGHT PURPOSE	PILOT DATA
3-1089	5/14/76	NR. BURNSVILLE, NC	CESSNA 182 N71387 DAMAGE-DESTROYED	CR- 1 0 0 PX- 1 0 0	NONCOMMERCIAL PLEASURE/PERSONAL TRANSP	COMMERCIAL, AGE 69, 540 TOTAL HOURS, 340 IN TYPE, NOT INSTRUMENT RATED.
	TIME - UNK/NR		INTENDED DESTINATION GAINESVILLE, FL			
	DEPARTURE POINT WADSWORTH, OH				PHASE OF OPERATION IN FLIGHT OTHER	
	TYPE OF ACCIDENT COLLISION WITH GROUND/WATER		UNCONTROLLED			
	PROBABLE CAUSE(S) PILOT IN COMMAND - IMPROPER IN-FLIGHT DECISIONS OR PLANNING PILOT IN COMMAND - CONTINUED VFR FLIGHT INTO ADVERSE WEATHER CONDITIONS					
	FACTOR(S) WEATHER - LOW CEILING WEATHER - DOWNDRAFT, UPDRAFTS WEATHER BRIEFING - NO RECORD OF BRIEFING RECEIVED WEATHER FORECAST - UNKNOWN/NOT REPORTED MISSING AIRCRAFT - LATER RECOVERED					
	SKY CONDITION UNKNOWN/NOT REPORTED VISIBILITY AT ACCIDENT SITE UNKNOWN/NOT REPORTED OBSTRUCTIONS TO VISION AT ACCIDENT SITE UNKNOWN/NOT REPORTED TYPE OF FLIGHT PLAN NONE				CEILING AT ACCIDENT SITE UNKNOWN/NOT REPORTED PRECIPITATION AT ACCIDENT SITE UNKNOWN/NOT REPORTED TYPE OF WEATHER CONDITIONS IFR	
	REMARKS- ACFT RCVRD 5/21/76. ATC SPECIALIST AT ZZV				ADVSD PLT VFR FLT NOT RECOMMENDED THRU GA & FL AREA.	

BRIEFS OF ACCIDENTS

FILE	DATE	LOCATION	AIRCRAFT DATA	INJURIES F S M/N	FLIGHT PURPOSE	PILOT DATA
3-3556	8/16/76 TIME - 0500	MANDAN,ND	CESSNA 172 N3783F DAMAGE-DESTROYED	CR- 1 0 0 PX- 3 0 0	NONCOMMERCIAL PLEASURE/PERSONAL TRANSP	PRIVATE, AGE 47, UNK/NR TOTAL HOURS, UNK/NR IN TYPE, NOT INSTRUMENT RATED.
	DEPARTURE POINT BISMARCK,ND TYPE OF ACCIDENT COLLISION WITH GROUND/WATER		INTENDED DESTINATION LEWISTON,MT UNCONTROLLED		PHASE OF OPERATION IN FLIGHT UNCONTROLLED DESCENT	
	PROBABLE CAUSE(S) PILOT IN COMMAND - INADEQUATE PREFLIGHT PREPARATION AND/OR PLANNING PILOT IN COMMAND - ATTEMPTED OPERATION BEYOND EXPERIENCE/ABILITY LEVEL PILOT IN COMMAND - SPATIAL DISORIENTATION					
	FACTOR(S) WEATHER - OTHER WEATHER BRIEFING - OTHER WEATHER FORECAST - FORECAST SUBSTANTIALLY CORRECT MISSING AIRCRAFT - LATER RECOVERED					
	SKY CONDITION OVERCAST VISIBILITY AT ACCIDENT SITE 5 OR OVER(UNLIMITED)				CEILING AT ACCIDENT SITE 2500 PRECIPITATION AT ACCIDENT SITE NONE TYPE OF WEATHER CONDITIONS VFR	
	OBSTRUCTIONS TO VISION AT ACCIDENT SITE UNKNOWN/NOT REPORTED TYPE OF FLIGHT PLAN NONE					
	REMARKS- PLT ASKED FOR LOCAL WX ONLY.FLT OVR UNLIT TERRAIN,SKY OVERCAST.RCVRD 8/17/76.					
3-0345	1/1/76 TIME - UNK/NR	ROCKFORD,OH	GRUM AMER AA1-A N6356L DAMAGE-SUBSTANTIAL	CR- 1 1 0 PX- 0 0 0	NONCOMMERCIAL PLEASURE/PERSONAL TRANSP	COMMERCIAL, AGE 22, 436 TOTAL HOURS, 228 IN TYPE, INSTRUMENT RATED.
	NAME OF AIRPORT - RIPLEY DEPARTURE POINT VAN WERT,OH TYPE OF ACCIDENT STALL SPIN		INTENDED DESTINATION CELINA,OH		PHASE OF OPERATION IN FLIGHT OTHER	
	PROBABLE CAUSE(S) MISCELLANEOUS - UNDETERMINED MISSING AIRCRAFT - LATER RECOVERED					
	REMARKS- PIC UN RECALL CIRCUMSTANCES PRECEDING ACOT.ACFT DSCNDD WITH LITTLE FWD SPEED WITH HI VERT SPEED.					

## BRIEFS OF ACCIDENTS

FILE	DATE	LOCATION	AIRCRAFT DATA	INJURIES			FLIGHT PURPOSE	PILOT DATA
				F	S	M/N		
3-0952	4/10/76	NR.SWEET HOME,OR TIME - 1920	CESSNA 172 N7075T DAMAGE-DESTROYED INTENDED DESTINATION EUGENE,OR	CR- 1 0 0 PX- 0 0 0			NONCOMMERCIAL PLEASURE/PERSONAL TRANSP	PRIVATE, AGE 34, 121 TOTAL HOURS, 46 IN TYPE, NOT INSTRUMENT RATED.
		DEPARTURE POINT REDMOND,OR TYPE OF ACCIDENT STALL SPIN					PHASE OF OPERATION IN FLIGHT OTHER	
		PROBABLE CAUSE(S) PILOT IN COMMAND - CONTINUED VFR FLIGHT INTO ADVERSE WEATHER CONDITIONS PILOT IN COMMAND - FAILED TO OBTAIN/MAINTAIN FLYING SPEED						
		FACTOR(S) PILOT IN COMMAND - BECAME LOST/DISORIENTED WEATHER - LOW CEILING WEATHER - RAIN WEATHER - FOG TERRAIN - HIGH OBSTRUCTIONS WEATHER BRIEFING - BRIEFED BY FLIGHT SERVICE PERSONNEL, IN PERSON WEATHER FORECAST - FORECAST SUBSTANTIALLY CORRECT MISSING AIRCRAFT - LATER RECOVERED						
		SKY CONDITION OBSCURATION VISIBILITY AT ACCIDENT SITE ZERO OBSTRUCTIONS TO VISION AT ACCIDENT SITE FOG TYPE OF FLIGHT PLAN NONE					CEILING AT ACCIDENT SITE UNKNOWN/NOT REPORTED PRECIPITATION AT ACCIDENT SITE RAIN, SNOW TYPE OF WEATHER CONDITIONS IFR	
		REMARKS- RECOVERY DATE 4/23/76. PLT ADVSD VFR FLT					NOT RECOMMENDED. ACFT EQUIPPED WITH PARTIAL PANEL INST.	
3-1028	4/21/76	NR.ROSEBURG,OR TIME - 1100	CESSNA 177B N10081 DAMAGE-DESTROYED	CR- 1 0 0 PX- 1 0 0			NONCOMMERCIAL PLEASURE/PERSONAL TRANSP	PRIVATE, AGE 42, 179 TOTAL HOURS, UNK/NR IN TYPE, NOT INSTRUMENT RATED.
		DEPARTURE POINT ROSEBURG,OR TYPE OF ACCIDENT AIRFRAME FAILURE IN FLIGHT	INTENDED DESTINATION KLAMATH FALLS,OR				PHASE OF OPERATION IN FLIGHT UNCONTROLLED DESCENT	
		PROBABLE CAUSE(S) PILOT IN COMMAND - SPATIAL DISORIENTATION PILOT IN COMMAND - EXCEEDED DESIGNED STRESS LIMITS OF AIRCRAFT MISCELLANEOUS ACTS,CONDITIONS - MATERIAL FAILURE						
		FACTOR(S) MISCELLANEOUS ACTS,CONDITIONS - OVERLOAD FAILURE MISSING AIRCRAFT - LATER RECOVERED						
		REMARKS- BOTH WGS & TAIL SECTION FAILED. WEA RPTD AS CLOUDY IN ACCDT AREA. RECOVERY DATE 4/24/76.						

BRIEFS OF ACCIDENTS

FILE	DATE	LOCATION	AIRCRAFT DATA	INJURIES F S W/N	FLIGHT PURPOSE	PILOT DATA
3-3270	10/9/76 TIME - 1930	HOOD RIVER,OR	GLOBE GC-18 N80918 DAMAGE-DESTROYED	CA- 1 0 0 PX- 0 0 0	NONCOMMERCIAL PLEASURE/PERSONAL TRANSP	PRIVATE, AGE 39, 1800 TOTAL HOURS, 6 IN TYPE, INSTRUMENT RATED.
		NAME OF AIRPORT - HOOD RIVER COUNTY	DEPARTURE POINT SPOKANE,WA	INTENDED DESTINATION VANCOUVER,WA	LAST ENROUTE STOP RICHLAND,WA	
		TYPE OF ACCIDENT ENGINE FAILURE OR MALFUNCTION STALL			PHASE OF OPERATION LANDING TRAFFIC PATTERN-CIRCLING LANDING FINAL APPROACH	
PROBABLE CAUSE(S) POWERPLANT - FUEL SYSTEM PUMPS MISCELLANEOUS ACTS,CONDITIONS - FUEL STARVATION PILOT IN COMMAND - FAILED TO OBTAIN/MAINTAIN FLYING SPEED						
FACTOR(S) PERSONNEL - MAINTENANCE,SERVICING,INSPECTION IMPROPER MAINTENANCE (OWNER PERSONNEL) AIRFRAME - FUSELAGE OTHER PERSONNEL - MAINTENANCE,SERVICING,INSPECTION INADEQUATE INSPECTION OF AIRCRAFT (MAINTENANCE PERSONNEL) PILOT IN COMMAND - ATTEMPTED OPERATION W/KNOWN DEFICIENCIES IN EQUIPMENT COMPLETE POWER LOSS - COMPLETE ENGINE FAILURE/FLAMEOUT-1 ENGINE MISSING AIRCRAFT - LATER RECOVERED EMERGENCY CIRCUMSTANCES - FORCED LANDING OFF AIRPORT ON LAND						
REMARKS- FND 10/10/76.PLT REBUILT ACFT,FAULTY MAGS,V REG,SEATBELT INSTALLATION.NO FLT INST LIGHTS.NITE APCH						
3-1209	3/2/76 TIME - 2040	NR.LIBERTY,TX	PIPER PA-22 N2341A DAMAGE-DESTROYED	CR- 1 0 0 PX- 0 0 0	MISCELLANEOUS TEST	PRIVATE, AGE 26, 258 TOTAL HOURS, ALL IN TYPE, NOT INSTRUMENT RATED.
		NAME OF AIRPORT - LIBERTY MUNI	DEPARTURE POINT LIBERTY,TX	INTENDED DESTINATION LOCAL	PHASE OF OPERATION LANDING TRAFFIC PATTERN-CIRCLING	
		TYPE OF ACCIDENT COLLISION WITH GROUND/WATER UNCONTROLLED				
PROBABLE CAUSE(S) PILOT IN COMMAND - CONTINUED VFR FLIGHT INTO ADVERSE WEATHER CONDITIONS PILOT IN COMMAND - SPATIAL DISORIENTATION						
FACTOR(S) PILOT IN COMMAND - INADEQUATE PREFLIGHT PREPARATION AND/OR PLANNING WEATHER - LOW CEILING WEATHER - FOG WEATHER BRIEFING - NO RECORD OF BRIEFING RECEIVED WEATHER FORECAST - FORECAST SUBSTANTIALLY CORRECT MISSING AIRCRAFT - LATER RECOVERED						
		SKY CONDITION OVERCAST			CEILING AT ACCIDENT SITE 100	
		VISIBILITY AT ACCIDENT SITE 1 MILE OR LESS			PRECIPITATION AT ACCIDENT SITE NONE	
		OBSTRUCTIONS TO VISION AT ACCIDENT SITE FOG			TYPE OF WEATHER CONDITIONS BELOW MINIMUMS	
		TYPE OF FLIGHT PLAN NONE				
REMARKS- FLT TO CK RADIO MALFUNCTION.						

## BRIEFS OF ACCIDENTS

FILE	DATE	LOCATION	AIRCRAFT DATA	INJURIES F S M/N	FLIGHT PURPOSE	PILOT DATA
3-1211	4/27/76	NR,PAMPA,TX	TINY HAWK P6E N1KG DAMAGE-DESTROYED	CR- 1 0 0 PX- 0 0 0	NONCOMMERCIAL PLEASURE/PERSONAL TRANSP	PRIVATE, AGE 57, UNK/NR TOTAL HOURS, UNK/NR IN TYPE, NOT INSTRUMENT RATED.
		DEPARTURE POINT ENID,OK	INTENDED DESTINATION AMARILLO,TX			
		TYPE OF ACCIDENT ENGINE FAILURE OR MALFUNCTION COLLISION WITH GROUND/WATER UNCONTROLLED		PHASE OF OPERATION IN FLIGHT OTHER IN FLIGHT UNCONTROLLED DESCENT		
PROBABLE CAUSE(S) POWERPLANT - MISCELLANEOUS POWERPLANT FAILURE FOR UNDETERMINED REASONS PILOT IN COMMAND - SPATIAL DISORIENTATION						
FACTOR(S) WEATHER - LOW CEILING WEATHER - RAIN WEATHER - FOG						
COMPLETE POWER LOSS - COMPLETE ENGINE FAILURE/FLAMEOUT-1 ENGINE WEATHER BRIEFING - NO RECORD OF BRIEFING RECEIVED WEATHER FORECAST - UNKNOWN/NOT REPORTED MISSING AIRCRAFT - LATER RECOVERED EMERGENCY CIRCUMSTANCES - FORCED LANDING OFF AIRPORT ON LAND						
		SKY CONDITION UNKNOWN/NOT REPORTED		CEILING AT ACCIDENT SITE UNKNOWN/NOT REPORTED		
		VISIBILITY AT ACCIDENT SITE UNKNOWN/NOT REPORTED		PRECIPITATION AT ACCIDENT SITE RAIN		
		OBSTRUCTIONS TO VISION AT ACCIDENT SITE GROUND FOG		TYPE OF WEATHER CONDITIONS IFR		
		TYPE OF FLIGHT PLAN NONE				
REMARKS- NO ENG MALFUNCTION FOUND. RECOVERY DATE 5/5/76. IMPACTED IN NR VERTICAL ATTITUDE,NO PROP ROTATION.						

BRIEFS OF ACCIDENTS

FILE	DATE	LOCATION	AIRCRAFT DATA	INJURIES F S M/N	FLIGHT PURPOSE	PILOT DATA
3-4164	4/29/76	NR.KIRKLAND,TX	CESSNA 172M N21496	CR- 1 0 0 PX- 0 0 0	NONCOMMERCIAL BUSINESS	PRIVATE, AGE 38, 915 TOTAL HOURS, 56 IN TYPE, NOT INSTRUMENT RATED.
		DEPARTURE POINT CHILDRESS,TX	DAMAGF-DESTROYED INTENDED DESTINATION BYERS,TX		PHASE OF OPERATION IN FLIGHT UNCONTROLLED DESCENT	
		TYPE OF ACCIDENT COLLISION WITH GROUND/WATER	UNCONTROLLED			
		PROBABLE CAUSE(S) PILOT IN COMMAND - CONTINUED VFR FLIGHT INTO ADVERSE WEATHER CONDITIONS PILOT IN COMMAND - SPATIAL DISORIENTATION				
		FACTOR(S) WEATHER - LOW CEILING WEATHER - FOG				
		WEATHER BRIEFING - BRIEFED BY FLIGHT SERVICE PERSONNEL, BY RADIO WEATHER FORECAST - FORECAST SUBSTANTIALLY CORRECT MISSING AIRCRAFT - LATER RECOVERED				
		SKY CONDITION OVERCAST			CEILING AT ACCIDENT SITE 1000	
		VISIBILITY AT ACCIDENT SITE 3 MILES OR LESS			PRECIPITATION AT ACCIDENT SITE NONE	
		OBSTRUCTIONS TO VISION AT ACCIDENT SITE FOG			TEMPERATURE-F 52	
		TYPE OF WEATHER CONDITIONS VFR			TYPE OF FLIGHT PLAN NONE	
		REMARKS- RECOVERY DATE 4/30/76				





BRIEFS OF ACCIDENTS

FILE	DATE	LOCATION	AIRCRAFT DATA	INJURIES F S M/N	FLIGHT PURPOSE	PILOT DATA
3-3758	10/15/76	NR.SEGUIN,TX	BELLANCA 17-30	CR- 1 0 0	NONCOMMERCIAL	PRIVATE, AGE 38, 125
	TIME - 1430		N4819V	PX- 0 0 0	PLEASURE/PERSONAL TRANSP	TOTAL HOURS, ALL IN TYPE, NOT INSTRUMENT RATED.
	DEPARTURE POINT		DAMAGE-DESTROYED			
	MCALLEN,TX		INTENDED DESTINATION			
	TYPE OF ACCIDENT		GATESVILLE,TX			
	COLLISION WITH GROUND/WATER		UNCONTROLLED		PHASE OF OPERATION	
					IN FLIGHT UNCONTROLLED DESCENT	
	PROBABLE CAUSE(S)					
	PILOT IN COMMAND - ATTEMPTED OPERATION BEYOND EXPERIENCE/ABILITY LEVEL					
	PILOT IN COMMAND - CONTINUED VFR FLIGHT INTO ADVERSE WEATHER CONDITIONS					
	PILOT IN COMMAND - FAILED TO FOLLOW APPROVED PROCEDURES,DIRECTIVES,ETC.					
	PILOT IN COMMAND - SPATIAL DISORIENTATION					
	FACTOR(S)					
	WEATHER - LOW CEILING					
	WEATHER - RAIN					
	WEATHER - FOG					
	WEATHER BRIEFING - BRIEFED BY FLIGHT SERVICE PERSONNEL, BY PHONE					
	WEATHER FORECAST - FORECAST SUBSTANTIALLY CORRECT					
	MISSING AIRCRAFT - LATER RECOVERED					
	SKY CONDITION				CEILING AT ACCIDENT SITE	
	OVERCAST				1800	
	VISIBILITY AT ACCIDENT SITE				PRECIPITATION AT ACCIDENT SITE	
	3/4 MILE OR LESS				RAIN SHOWERS	
	OBSTRUCTIONS TO VISION AT ACCIDENT SITE				TEMPERATURE-F	
	FOG				63	
	WIND DIRECTION-DEGREES				WIND VELOCITY-KNOTS	
	10				9	
	TYPE OF WEATHER CONDITIONS				TYPE OF FLIGHT PLAN	
	1FR				NONE	
	REMARKS- RECOVERY DATE 112376 WX DETERIORATED AFTER BRIEFING PLT FAILED TO RECK WX BEFORE OR AFTER TAKE OFF					

BRIFFS OF ACCIDENTS

FILE	DATE	LOCATION	AIRCRAFT DATA	INJURIES			FLIGHT PURPOSE	PILOT DATA	
				F	S	M/N			
3-0241	1/3/76 TIME - 1700	NR. IBAPAH, UT	PIPER PA-28. N44600 DAMAGE-DESTROYED	CR-	1	0	0	NONCOMMERCIAL BUSINESS	COMMERCIAL, FL. INSTR., AGE 59, 20090 TOTAL HOURS, UNK/NR IN TYPE, INSTRUMENT RATED.
		DEPARTURE POINT BATTLE MOUNTAIN, NV	INTENDED DESTINATION ALBUQUERQUE, NM					LAST ENROUTE STOP MILFORD, UT	
		TYPE OF ACCIDENT COLLISION WITH GROUND/WATER	CONTROLLED					PHASE OF OPERATION IN FLIGHT NORMAL CRUISE	
		PROBABLE CAUSE(S) PILOT IN COMMAND - CONTINUED VFR FLIGHT INTO ADVERSE WEATHER CONDITIONS PILOT IN COMMAND - IMPROPER IN-FLIGHT DECISIONS OR PLANNING							
		FACTOR(S) WEATHER - LOW CEILING WEATHER - SNOW WEATHER - ICING CONDITIONS-INCLUDES SLEET, FREEZING RAIN, ETC. TERRAIN - HIGH OBSTRUCTIONS WEATHER BRIEFING - BRIEFED BY FLIGHT SERVICE PERSONNEL, BY RADIO WEATHER FORECAST - FORECAST SUBSTANTIALLY CORRECT MISSING AIRCRAFT - LATER RECOVERED							
		SKY CONDITION OBSCURATION VISIBILITY AT ACCIDENT SITE ZERO OBSTRUCTIONS TO VISION AT ACCIDENT SITE UNKNOWN/NOT REPORTED TYPE OF FLIGHT PLAN NONE						CEILING AT ACCIDENT SITE UNKNOWN/NOT REPORTED PRECIPITATION AT ACCIDENT SITE SNOW TYPE OF WEATHER CONDITIONS IFR	
		REMARKS- ACFT RECOVERED 1/5/76. HIT OBSCURED MTN SLOPE.							
3-0851	2/13/76 TIME - 1630	NR. HYRUM, UT	GRUM AMER AA-5 N1357R DAMAGE-DESTROYED	CR-	1	0	0	NONCOMMERCIAL	PRIVATE, AGE 19, 81 TOTAL HOURS, 61 IN TYPE, NOT INSTRUMENT RATED.
		DEPARTURE POINT WEST JORDAN, UT	INTENDED DESTINATION RETURN					LAST ENROUTE STOP LOGAN, UT	
		TYPE OF ACCIDENT COLLISION WITH GROUND/WATER	CONTROLLED					PHASE OF OPERATION IN FLIGHT NORMAL CRUISE	
		PROBABLE CAUSE(S) PILOT IN COMMAND - IMPROPER IN-FLIGHT DECISIONS OR PLANNING MISCELLANEOUS ACTS, CONDITIONS - FLEW INTO BLIND CANYON							
		FACTOR(S) TERRAIN - HIGH OBSTRUCTIONS MISSING AIRCRAFT - LATER RECOVERED FIRE AFTER IMPACT							
		REMARKS- RECOVERY DATE 4/14/76. ACCOT TIME PRESUMED.							

BRIEFS OF ACCIDENTS

FILE	DATE	LOCATION	AIRCRAFT DATA	INJURIES F S M/N	FLIGHT PURPOSE	PILOT DATA
3-2608	6/29/76	NR.KAMAS,UT TIME - 1530	STINSON 108-2 N8015K DAMAGE-DESTROYED	CR- 1 0 0 PX- 3 0 0	NONCOMMERCIAL PLEASURE/PERSONAL TRANSP	PRIVATE, AGE 43, 520 TOTAL HOURS, 328 IN TYPE, NOT INSTRUMENT RATED.
		DEPARTURE POINT SACRAMENTO,CA TYPE OF ACCIDENT COLLIDED WITH TREES	INTENDED DESTINATION SCOTTSBLUFF,NE		LAST ENROUTE STOP ODGEN,UT PHASE OF OPERATION IN FLIGHT OTHER	
		PROBABLE CAUSE(S) PILOT IN COMMAND - IMPROPER IN-FLIGHT DECISIONS OR PLANNING PILOT IN COMMAND - EXERCISED POOR JUDGMENT				
		FACTOR(S) WEATHER - HIGH DENSITY ALTITUDE MISCELLANEOUS ACTS,CONDITIONS - IMPROPERLY LOADED AIRCRAFT-WEIGHT-AND/OR C.G. WEATHER BRIEFING - BRIEFED BY FLIGHT SERVICE PERSONNEL, BY PHONE WEATHER FORECAST - FORECAST SUBSTANTIALLY CORRECT MISSING AIRCRAFT - LATER RECOVERED				
		SKY CONDITION SCATTERED			CEILING AT ACCIDENT SITE UNLIMITED	
		VISIBILITY AT ACCIDENT SITE 5 OR OVER(UNLIMITED)			PRECIPITATION AT ACCIDENT SITE NONE	
		OBSTRUCTIONS TO VISION AT ACCIDENT SITE NONE			TEMPERATURE-F 65	
		TYPE OF WEATHER CONDITIONS VFR			TYPE OF FLIGHT PLAN VFR	
		REMARKS- DA 12,300FT.RECOVERY DATE 7/24/76.				
3-1909	7/8/76	NR.HEBER CITY,UT TIME - 1830	SCHWEIZER S6U22 N2769R DAMAGE-DESTROYED	CR- 1 0 0 PX- 0 0 0	NONCOMMERCIAL PLEASURE/PERSONAL TRANSP	STUDENT, AGE 25, 12 TOTAL HOURS, ALL IN TYPE, NOT INSTRUMENT RATED.
		DEPARTURE POINT HEBER CITY,UT TYPE OF ACCIDENT COLLIDED WITH TREES	INTENDED DESTINATION LOCAL		PHASE OF OPERATION IN FLIGHT NORMAL CRUISE	
		PROBABLE CAUSE(S) PILOT IN COMMAND - IMPROPER IN-FLIGHT DECISIONS OR PLANNING PILOT IN COMMAND - MISJUDGED CLEARANCE				
		FACTOR(S) TERRAIN - HIGH OBSTRUCTIONS MISSING AIRCRAFT - LATER RECOVERED				
		REMARKS- WHEEL EOPD.RECOVERY DATE 7/9/76.				

## BRIEFS OF ACCIDENTS

FILE	DATE	LOCATION	AIRCRAFT DATA	INJURIES F S M/N	FLIGHT PURPOSE	PILOT DATA
3-2958	8/4/76	SNOOQLMIE PASS,WA	NAVION A N313L	CR- 1 0 0 PX- 0 0 0	NONCOMMERCIAL PLEASURE/PERSONAL TRANSP	PRIVATE, AGE 43, 320 TOTAL HOURS, 49 IN TYPE, NOT INSTRUMENT RATED.
	TIME - 1730		DAMAGE-DESTROYED INTENDED DESTINATION SILVERDALE,WA		LAST ENROUTE STOP ELLENSBURG,WA	
	DEPARTURE POINT LEWISTOWN,MT				PHASE OF OPERATION IN FLIGHT NORMAL CRUISE	
	TYPE OF ACCIDENT COLLISION WITH GROUND/WATER		UNCONTROLLED			
	PROBABLE CAUSE(S) PILOT IN COMMAND - CONTINUED VFR FLIGHT INTO ADVERSE WEATHER CONDITIONS PILOT IN COMMAND - INCAPACITATION MISCELLANEOUS ACTS,CONDITIONS - PILOT SUFFERED HEART ATTACK					
	FACTOR(S) WEATHER - LOW CEILING WEATHER - FOG TERRAIN - HIGH OBSTRUCTIONS MISCELLANEOUS ACTS,CONDITIONS - PILOT FATIGUE WEATHER BRIEFING - BRIEFED BY FLIGHT SERVICE PERSONNEL, BY PHONE WEATHER FORECAST - FORECAST SUBSTANTIALLY CORRECT MISSING AIRCRAFT - LATER RECOVERED					
	SKY CONDITION OBSCURATION VISIBILITY AT ACCIDENT SITE 1/4 MILE OR LESS OBSTRUCTIONS TO VISION AT ACCIDENT SITE FOG WIND DIRECTION-DEGREES 240 TYPE OF WEATHER CONDITIONS IFR				CEILING AT ACCIDENT SITE 100 PRECIPITATION AT ACCIDENT SITE NONE TEMPERATURE-F 50 WIND VELOCITY-KNOTS 12 TYPE OF FLIGHT PLAN NONE	
	REMARKS-					CAUTIONED THAT WX WAS NOT ADEQUATE FOR VFR FLT THRU MTN PASSES.WRECKAGE LOCATED 8/6/76.

BRIEFS OF ACCIDENTS

FILE	DATE	LOCATION	AIRCRAFT DATA	INJURIES F S M/N	FLIGHT PURPOSE	PILOT DATA
3-2458	8/11/76	NR. ENUMCLAW, WA	CESSNA 172N N20083	CR- 1 0 0 PX- 3 1 0	NONCOMMERCIAL PLEASURE/PERSONAL TRANSP	PRIVATE, AGE 47. 152 TOTAL HOURS, 115 IN TYPE, NOT INSTRUMENT RATED.
		DEPARTURE POINT SEATTLE, WA	INTENDED DESTINATION LOCAL		PHASE OF OPERATION IN FLIGHT OTHER	
		TYPE OF ACCIDENT STALL				
		PROBABLE CAUSE(S) PILOT IN COMMAND - FAILED TO OBTAIN/MAINTAIN FLYING SPEED				
		FACTOR(S) MISCELLANEOUS ACTS, CONDITIONS - FLEW INTO BLIND CANYON				
		WEATHER - LOW CEILING				
		WEATHER BRIEFING - NO RECORD OF BRIEFING RECEIVED				
		WEATHER FORECAST - UNKNOWN/NOT REPORTED				
		MISSING AIRCRAFT - LATER RECOVERED				
		SKY CONDITION SCATTERED			CEILING AT ACCIDENT SITE 4000	
		VISIBILITY AT ACCIDENT SITE 5 OR OVER (UNLIMITED)			PRECIPITATION AT ACCIDENT SITE NONE	
		OBSTRUCTIONS TO VISION AT ACCIDENT SITE NONE			TEMPERATURE-F 77	
		WIND DIRECTION-DEGREES 300			WIND VELOCITY-KNOTS 4	
		TYPE OF WEATHER CONDITIONS VFR			TYPE OF FLIGHT PLAN NONE	
		FIRE AFTER IMPACT				
		REMARKS- UNABLE TO CONTINUE DUE TO LOW CLOUDS, ATTEMPTING TURNAROUND. WRECKAGE LOCATED 8/14/76.				

BRIFES OF ACCIDENTS

FILE	DATE	LOCATION	AIRCRAFT DATA	INJURIES F S M/N	FLIGHT PURPOSE	PILOT DATA
3-222A	8/24/76 TIME - 2059	NO. RONNEVILLE, WA	PIPER PA-28 N9154J DAMAGE-DESTROYED	CR- 1 0 0 PX- 0 0 0	NONCOMMERCIAL PLEASURE/PERSONAL TRANSP	PRIVATE, AGE 28, 55 TOTAL HOURS, UNK/MR IN TYPE, NOT INSTRUMENT RATED.
	DEPARTURE POINT BREWSTER, WA	INTENDED DESTINATION HILLSBORO, OR			PHASE OF OPERATION IN FLIGHT NORMAL CRUISE	
	TYPE OF ACCIDENT COLLISION WITH GROUND/WATER CONTROLLED					
	PROBABLE CAUSE(S) PILOT IN COMMAND - ATTEMPTED OPERATION BEYOND EXPERIENCE/ABILITY LEVEL PILOT IN COMMAND - IMPROPER IN-FLIGHT DECISIONS OR PLANNING					
	FACTOR(S) WEATHER - LOW CEILING WEATHER - RAIN WEATHER - FOG TERRAIN - HIGH OBSTRUCTIONS WEATHER BRIFFING - BRIFFED BY FLIGHT SERVICE PERSONNEL, BY PHONE WEATHER FORECAST - FORECAST SUBSTANTIALLY CORRECT MISSING AIRCRAFT - LATER RECOVERED					
	SKY CONDITION SCATTERED				CEILING AT ACCIDENT SITE 2800	
	VISIBILITY AT ACCIDENT SITE 4 MILES OR LESS				PRECIPITATION AT ACCIDENT SITE RAIN	
	OBSTRUCTIONS TO VISION AT ACCIDENT SITE FOG				TEMPERATURE-F 61	
	WIND DIRECTION-DEGREES 340				WIND VELOCITY-KNOTS 8	
	TYPE OF WEATHER CONDITIONS VFR				TYPE OF FLIGHT PLAN VFR	
3-3283	9/21/76 TIME - 2142	NR. BREMERTON, WA	BELLANCA 17-31 N7387V DAMAGE-SUBSTANTIAL	CR- 0 1 0 PX- 0 1 0	NONCOMMERCIAL PLEASURE/PERSONAL TRANSP	PRIVATE, AGE 38, 212 TOTAL HOURS, 5 IN TYPE, NOT INSTRUMENT RATED.
	NAME OF AIRPORT - KITSAP COUNTY DEPARTURE POINT HAYWARD, CA	INTENDED DESTINATION BREMERTON, WA			PHASE OF OPERATION LANDING INITIAL APPROACH LANDING FINAL APPROACH	
	TYPE OF ACCIDENT ENGINE FAILURE OR MALFUNCTION COLLIDED WITH TREES					
	PROBABLE CAUSE(S) PILOT IN COMMAND - MISMANAGEMENT OF FUEL MISCELLANEOUS ACTS, CONDITIONS - FUEL STARVATION TERRAIN - HIGH OBSTRUCTIONS					
	FACTOR(S) PILOT IN COMMAND - ATTEMPTED OPERATION BEYOND EXPERIENCE/ABILITY LEVEL COMPLETE POWER LOSS - COMPLETE ENGINE FAILURE/FLAMEOUT-1 ENGINE MISSING AIRCRAFT - LATER RECOVERED EMERGENCY CIRCUMSTANCES - FORCED LANDING OFF AIRPORT ON LAND REMARKS- SELECTED EMPTY AUX TANK DRG ILS APCH. NOT INSTRUMENT RATED. WRECKAGE FND 9/22/76.					

BRIEFS OF ACCIDENTS

FILE	DATE	LOCATION	AIRCRAFT DATA	INJURIES F S M/N	FLIGHT PURPOSE	PILOT DATA
3-0127	1/21/76	NR.CLOVER LICK,WV	PIPER PA-39	CR- 1 0 0	NONCOMMERCIAL	PRIVATE, AGE 62, 1102
	TIME - 1631		N8868Y	FX- 2 0 0	BUSINESS	TOTAL HOURS, 520 IN TYPE, INSTRUMENT RATED.
	DEPARTURE POINT		DAMAGE-DESTROYED			
	ROANOKE,VA		INTENDED DESTINATION			
	TYPE OF ACCIDENT		PITTSBURG,PA			
	COLLISION WITH GROUND/WATER		UNCONTROLLED		PHASE OF OPERATION	
					IN FLIGHT OTHER	
	PROBABLE CAUSE(S)					
	PILOT IN COMMAND - ATTEMPTED OPERATION W/KNOWN DEFICIENCIES IN EQUIPMENT					
	MISCELLANEOUS ACTS,CONDITIONS - AIRFRAME ICF					
	FACTOR(S)					
	WEATHER - ICING CONDITIONS-INCLUDES SLEET,FREEZING RAIN,ETC.					
	WEATHER BRIEFING - BRIEFED BY FLIGHT SERVICE PERSONNEL, IN PERSON					
	WEATHER FORECAST - FORECAST SUBSTANTIALLY CORRECT					
	MISSING AIRCRAFT - LATER RECOVERED					
	SKY CONDITION				CEILING AT ACCIDENT SITE	
	OVERCAST				UNKNOWN/NOT REPORTED	
	VISIBILITY AT ACCIDENT SITE				PRECIPITATION AT ACCIDENT SITE	
	UNKNOWN/NOT REPORTED				SNOW	
	OBSTRUCTIONS TO VISION AT ACCIDENT SITE				TYPE OF WEATHER CONDITIONS	
	UNKNOWN/NOT REPORTED				IFR	
	TYPE OF FLIGHT PLAN					
	IFR					
	REMARKS- RECOVERED 1/29/76.					

BRIEFS OF ACCIDENTS

FILE	DATE	LOCATION	AIRCRAFT DATA	INJURIES F S M/N	FLIGHT PURPOSE	PILOT DATA
3-0862	3/20/76	NR.LUSK,WY TIME - 1000	PIPER PA-23 N3080P DAMAGE-DESTROYED	CR- 1 0 0 PX- 3 0 0	NONCOMMERCIAL PLEASURE/PERSONAL TRANSP	COMMERCIAL, FL.INSTR., AGE 41, 304 TOTAL HOURS, 20 IN TYPE, INSTRUMENT RATED.
		DEPARTURE POINT SHERIDAN,WY	INTENDED DESTINATION GOODLAND,KS			
		TYPE OF ACCIDENT COLLISION WITH GROUND/WATER	UNCONTROLLED	PHASE OF OPERATION IN FLIGHT UNCONTROLLED DESCENT		
PROBABLE CAUSE(S)						
PILOT IN COMMAND - CONTINUED VFR FLIGHT INTO ADVERSE WEATHER CONDITIONS						
PILOT IN COMMAND - IMPROPER IN-FLIGHT DECISIONS OR PLANNING						
MISCELLANEOUS ACTS,CONDITIONS - AIRFRAME ICE						
FACTOR(S)						
WEATHER - SNOW						
WEATHER - ICING CONDITIONS-INCLUDES SLEET,FREEZING RAIN,ETC.						
WEATHER - TURBULENCE, ASSOCIATED W/CLOUDS AND/OR THUNDERSTORMS						
WEATHER - LOW CEILING						
MISCELLANEOUS ACTS,CONDITIONS - DISREGARD OF GOOD OPERATING PRACTICE						
WEATHER BRIEFING - BRIEFED BY FLIGHT SERVICE PERSONNEL, IN PERSON						
WEATHER FORECAST - WEATHER CONSIDERABLY WORSE THAN FORECAST						
MISSING AIRCRAFT - LATER RECOVERED						
		SKY CONDITION OBSCURATION		CEILING AT ACCIDENT SITE UNKNOWN/NOT REPORTED		
		VISIBILITY AT ACCIDENT SITE 1/4 MILE OR LESS		PRECIPITATION AT ACCIDENT SITE SNOW		
		OBSTRUCTIONS TO VISION AT ACCIDENT SITE BLOWING SNOW		TYPE OF WEATHER CONDITIONS IFR		
		TYPE OF FLIGHT PLAN VFR				
		FIRE AFTER IMPACT				
REMARKS- RECOVERY DATE 3/21/76, ACFT NOT EQUIPPED WITH ANTI ICING/DE-ICING SYS. FREEZING LVL AT GRND LVL.						
3-1916	7/25/76	NR.CODY,WY TIME - 1030	AERO CMDR 560F N2244S DAMAGE-DESTROYED	CR- 1 0 0 PX- 3 0 0	NONCOMMERCIAL PLEASURE/PERSONAL TRANSP	PRIVATE, AGE 45, 2464 TOTAL HOURS, 900 IN TYPE, INSTRUMENT RATED.
		DEPARTURE POINT CODY,WY	INTENDED DESTINATION SPOKANE,WN			
		TYPE OF ACCIDENT COLLIDED WITH TREES		LAST ENROUTE STOP UNKNOWN/NOT REPORTED		
				PHASE OF OPERATION IN FLIGHT LOW PASS		
PROBABLE CAUSE(S)						
PILOT IN COMMAND - EXERCISED POOR JUDGMENT						
PILOT IN COMMAND - MISJUDGED CLEARANCE						
MISCELLANEOUS ACTS,CONDITIONS - UNWARRANTED LOW FLYING						
FACTOR(S)						
TERRAIN - HIGH OBSTRUCTIONS						
MISSING AIRCRAFT - LATER RECOVERED						
FIRE AFTER IMPACT						
REMARKS- RECOVERY DATE 7/26/76.						



00123 89  
4423 81

MRSB Missing and Missing  
MM Later Recovered Aircraft  
78-7  
1976

BRIEFS OF ACCIDENTS

FILE	DATE	LOCATION	AIRCRAFT DATA	INJURIES F S M/N	FLIGHT PURPOSE	PILOT DATA
3-3833	12/11/76 TIME - 1400	NR.SHERIDAN,WY	CESSNA 120 N90193 DAMAGE-DESTROYED	CR- 1 0 0 PX- 0 0 0	NONCOMMERCIAL PLEASURE/PERSONAL TRANSP	COMMERCIAL, FL.INSTR., AGE 25, 948 TOTAL HOURS, UNK/NR IN TYPE, INSTRU- MENT RATED.
		DEPARTURE POINT SHERIDAN,WY TYPE OF ACCIDENT COLLISION WITH GROUND/WATER	INTENDED DESTINATION SHERIDAN,WY CONTROLLED		PHASE OF OPERATION IN FLIGHT LOW PASS	
		PROBABLE CAUSE(S) PILOT IN COMMAND - MISJUDGED CLEARANCE FACTOR(S) WEATHER - TURBULENCE IN FLIGHT,CLEAR AIR WEATHER - DOWNDRAFT,UPDRAFTS WEATHER BRIEFING - NO RECORD OF BRIEFING RECEIVED MISSING AIRCRAFT - LATER RECOVERED				
		SKY CONDITION SCATTERED VISIBILITY AT ACCIDENT SITE 5 OR OVER(UNLIMITED) OBSTRUCTIONS TO VISION AT ACCIDENT SITE NONE WIND DIRECTION-DEGREES 230 TYPE OF WEATHER CONDITIONS VFR REMARKS- RECOVERY DATE 12/13/76.			CEILING AT ACCIDENT SITE UNLIMITED PRECIPITATION AT ACCIDENT SITE NONE TEMPERATURE-F 46 WIND VELOCITY-KNOTS 7 TYPE OF FLIGHT PLAN NONE	

BY THE NATIONAL TRANSPORTATION SAFETY BOARD

/s/ JAMES B. KING  
Chairman

/s/ FRANCIS H. McADAMS  
Member

/s/ PHILIP A. HOGUE  
Member

/s/ ELWOOD T. DRIVER  
Member

April 13, 1978

ER. A. U. LIBRARY

EMBRY-RIDDLE AERO U. DAYTONA BEACH



3 1745 00070 8084

