

# School Malaise Trap Program

## Species Image Library

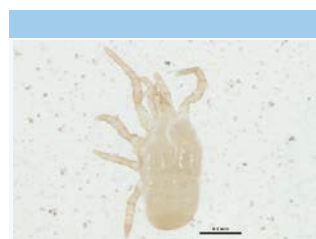
The images of the species collected in your Malaise trap are shown below. A single representative from each species was selected to be photographed; in some cases, only a damaged specimen was available.



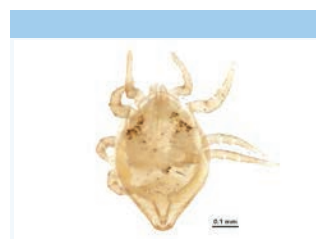
[Dorsal]  
*Larinioides patagiatus*  
BIN URI: BOLD:AAA3681



[Dorsal]  
*Erigone atra*  
BIN URI: BOLD:ACE5877



[Dorsal]  
Ascidae  
BIN URI: BOLD:ACC9616



[Dorsal]  
Mesostigmata  
BIN URI: BOLD:ACU5120



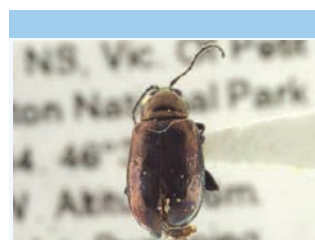
[Lateral]  
Entomobrya  
BIN URI: BOLD:ACL6239



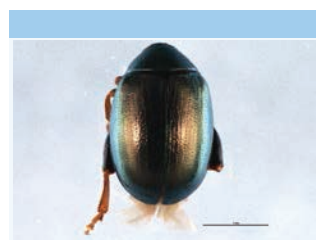
[Lateral]  
*Lepidocyrtus*  
BIN URI: BOLD:ACF1714



[Lateral]  
Entomobrya sp.  
BIN URI: BOLD:AAA7249



[Dorsal]  
*Altica corni*  
BIN URI: BOLD:AAG4445



[Dorsal]  
*Dibolia borealis*  
BIN URI: BOLD:ABA9947



[Dorsal]  
*Phyllotreta striolata*  
BIN URI: BOLD:AAL5267



[Dorsal]  
*Phyllotreta striolata*  
BIN URI: BOLD:AAP7016



[Lateral]  
*Enoclerus nigripes ru ventris*  
BIN URI: BOLD:AAU6970



[Dorsal]  
*Elychnia corrusca*  
BIN URI: BOLD:AAF4976



[Lateral]  
Corticaria  
BIN URI: BOLD:AAN6154



[Lateral]  
*Orsodacne atra*  
BIN URI: BOLD:AAG4452



[Lateral]  
*Amischa analis*  
BIN URI: BOLD:ABA5313



[Lateral]  
Nudobius  
BIN URI: BOLD:AAV6531



[Lateral]  
*Phytobia setosa*  
BIN URI: BOLD:AAM7338



[Lateral]  
*Hylemya* sp. Schuehli 28.iv.01  
BIN URI: BOLD:AAP2967



[Lateral]  
*Lasioomma* nr. *picipes*  
BIN URI: BOLD:AAL7525



[Lateral]  
*Aulacigaster neoleucopeza*  
BIN URI: BOLD:AAV0437



[Lateral]  
Diptera  
BIN URI: BOLD:AAG6745



[Lateral]  
Cecidomyiidae  
BIN URI: BOLD:ABA1242



[Lateral]  
Cecidomyiidae  
BIN URI: BOLD:ACU5372



[Lateral]  
Cecidomyiidae  
BIN URI: BOLD:ACK9889



[Lateral]  
Cecidomyiidae  
BIN URI: BOLD:ACU4683



[Lateral]  
Cecidomyiidae  
BIN URI: BOLD:ACK4497



[Lateral]  
*Smittia* sp. 22ES  
BIN URI: BOLD:AAN5358



[Lateral]  
*Phronia* sp. CJB10  
BIN URI: BOLD:AAP9071



[Lateral]  
Phoridae  
BIN URI: BOLD:AAG3274



[Lateral]  
Phoridae  
BIN URI: BOLD:ABU5529



[Lateral]  
Megaselia  
BIN URI: BOLD:AAU6524



[Lateral]  
Phoridae  
BIN URI: BOLD:AAL9076



[Lateral]  
Phoridae  
BIN URI: BOLD:ABA1225



[Lateral]  
Phoridae  
BIN URI: BOLD:ABA1213



[Lateral]  
Phoridae  
BIN URI: BOLD:ACM1336



[Lateral]  
Phoridae  
BIN URI: BOLD:ABU5529



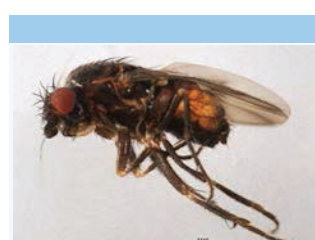
[Lateral]  
Phoridae  
BIN URI: BOLD:AAU6524



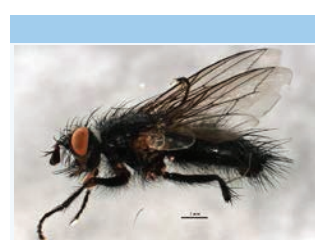
[Lateral]  
Phoridae  
BIN URI: BOLD:AAL9076



[Lateral]  
Phoridae  
BIN URI: BOLD:ABA1225



[Lateral]  
Phoridae  
BIN URI: BOLD:ABA1213



[Lateral]  
Phoridae  
BIN URI: BOLD:ACM1336



[Lateral]

Phoridae  
BIN URI: BOLD:ACG4438



[Dorsal]

Empoasca  
BIN URI: BOLD:ABA5875



[Lateral]

Tersilochinae  
BIN URI: BOLD:ACU4576



[Dorsal]

Caloptilia serotinella  
BIN URI: BOLD:AAC4176



[Lateral]

Sciaridae  
BIN URI: BOLD:AAZ5612



[Lateral]

Erythroneura certa  
BIN URI: BOLD:ABA5787



[Lateral]

Platygastridae  
BIN URI: BOLD:ACU5044



[Dorsal]

Pseudexentera oregonana  
BIN URI: BOLD:AAA7131



[Lateral]

Sciaridae  
BIN URI: BOLD:AAH3927



[Lateral]

Erythrídula wysongi  
BIN URI: BOLD:AAH8287



[Dorsal]

Platygastridae  
BIN URI: BOLD:AAG7886



[Lateral]

Ischiolepta intermedia  
BIN URI: BOLD:ACD3001



[Dorsal]

Lygus lineolaris  
BIN URI: BOLD:AAA5803



[Lateral]

Platygastridae  
BIN URI: BOLD:ACU4520



[Lateral]

Sphaeroceridae  
BIN URI: BOLD:AAP6440



[Dorsal]

Trichopria basalis  
BIN URI: BOLD:AAH8179



[Lateral]

Platygastridae  
BIN URI: BOLD:ACF8276



[Lateral]

Tachinidae  
BIN URI: BOLD:AAP3780



[Lateral]

Ichneumon  
BIN URI: BOLD:AAD5318



[Lateral]

Amauronematus  
BIN URI: BOLD:ACF7988

