

Parameters

Records Included: All records
 Filter Image by Orientation: None
 Aspect Ratio: Normalized 3:2

Result Summary

Total Records: 72

Re-render images: per row

5000 Records Per Page - Pages: 1



BIOUG02782-G05 [Dorsal]
Erigone alertris
 BIN URI: BOLD:AAD1746



BIOUG16112-A11 [Dorsal]
 Phytoseiidae
 BIN URI: BOLD:ACP9397



BIOUG25629-A01 [Dorsal]
 Phytoseiidae
 BIN URI: BOLD:ACY2204



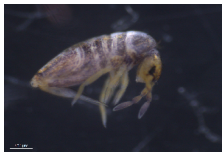
BIOUG11770-E05 [Dorsal]
 Trichoribates
 BIN URI: BOLD:ACL2370



BIOUG31110-G07 [Dorsal]
 Trichoribates
 BIN URI: BOLD:ADE0783



BIOUG22049-B03 [Dorsal]
 Ceratozetidae
 BIN URI: BOLD:ACU5511



11982-F11 [Lateral]
Lepidocyrtus
 BIN URI: BOLD:AAA8820



BIOUG04016-H04 [Lateral]
 Bourlettiella
 BIN URI: BOLD:ACC0359



BIOUG02130-H02 [Lateral]
 Bourlettiella
 BIN URI: BOLD:ACV5609



TDWG-0539 [Dorsal]
 Bourlettiellidae
 BIN URI: BOLD:AAAN4907



CNC COLEO 00252245 [Dorsal]
Anthicus cervinus
 BIN URI: BOLD:AAH2753



BIOUG03515-C08 [Dorsal]
Melanophthalma
 BIN URI: BOLD:AAP7026



BIOUG16044-A01 [Dorsal]
Amischa decipiens
 BIN URI: BOLD:ABA6362



BIOUG25606-G12 [Dorsal]
 Tachyporus
 BIN URI: BOLD:AAM9619



BIOUG05509-G10 [Lateral]
 Tachyporus
 BIN URI: BOLD:AAAN9511



BIOUG25584-C07 [Lateral]
 Staphylinidae
 BIN URI: BOLD:ACX9078



BIOUG16116-A02 [Lateral]
 Chromatomyia
 BIN URI: BOLD:ACP9372



BIOUG04140-D12 [Lateral]
 Agromyzidae
 BIN URI: BOLD:AAU9505



BIOUG24833-G06 [Lateral]
Pelomyia occidentalis
 BIN URI: BOLD:ABA8614



BIOUG05515-B03 [Lateral]
Chironomus maturus
 BIN URI: BOLD:AAB4657



BIOUG22467-G05 [Lateral]
 Phaenopsectra
 BIN URI: BOLD:AAM6287



BIOUG01337-H06 [Lateral]
 Smittia
 BIN URI: BOLD:AAG1019



BIOUG05644-A07 [Lateral]
Psectrotanypus sp. ES01
 BIN URI: BOLD:AAG0314



BIOUG01818-A04 [Lateral]
Culiseta inornata
 BIN URI: BOLD:AAC9132



CNC DIPTERA 163654 [Lateral]
Medetera sp. SEB5
 BIN URI: BOLD:ACA1124



BIOUG06710-C11 [Lateral]
 Drosophila
 BIN URI: BOLD:ACI7818



BIOUG25568-H01 [Lateral]
Cheilotrichia cinerascens
 BIN URI: BOLD:ABV4106



CCDB-12827-H07 [Lateral]
Coenosia tigrina
 BIN URI: BOLD:AAB5609



BIOUG06564-C11 [Lateral]
 Mycetophila
 BIN URI: BOLD:ACJ0451



BIOUG01459-D09 [Lateral]
 Conicera
 BIN URI: BOLD:AAG3236



BIOUG08898-E03 [Lateral]



BIOUG01392-A02 [Lateral]



BIOUG22084-C04 [Lateral]



BIOUG16158-G10 [Lateral]



BIOUG16041-A03 [Lateral]



BIOUG14353-E05 [Lateral]

Scathophaga furcata
BIN URI: BOLD:ACX4405



BIOUG25626-D09 [Lateral]
Sciariidae
BIN URI: BOLD:ACB9102

Bradysia placida
BIN URI: BOLD:ACR4350



BIOUG16160-A08 [Lateral]
Sciariidae
BIN URI: BOLD:ACP7943

Bradysia vagans
BIN URI: BOLD:AAM9252



CNC DIPTERA 192379 [Lateral]
Tipula paludosa
BIN URI: BOLD:AAE7386

Bradysia
BIN URI: BOLD:ACP9604



BIOUG00806-A04 [Dorsal]
Anoecia fulviabdominalis
BIN URI: BOLD:AAH2871

Corynoptera globiformis
BIN URI: BOLD:AAN6453



10BBCHEM-0381 [Lateral]
Nearctaphis sensoriata
BIN URI: BOLD:AAG3602

Corynoptera perpusilla
BIN URI: BOLD:AAN6447



NIBGE APH-00163 [Dorsal]
Rhopalosiphum padi
BIN URI: BOLD:AAA9899



BIOUG31110-F05 [Dorsal]
Appendiseta robiniae
BIN URI: BOLD:AAF5648



BIOUG02286-E11 [Dorsal]
Dikraneura mali
BIN URI: BOLD:AAO8340



BIOUG03101-D11 [Lateral]
Empoasca
BIN URI: BOLD:ACC4174



BIOUG00947-A01 [Lateral]
Typhlocyba rosae
BIN URI: BOLD:ABA5828



BIOUG01029-F03 [Lateral]
Alysiinae
BIN URI: BOLD:AAN8138



BIOUG00974-B02 [Lateral]
Aphidinae
BIN URI: BOLD:AAH7429



ASGLE-1229 [Lateral]
Hymenoptera
BIN URI: BOLD:AAM7487



BIOUG25603-A04 [Lateral]
Diapriidae
BIN URI: BOLD:ACJ5673



BIOUG08647-D12 [Lateral]
Asecodes
BIN URI: BOLD:ACD8255



BIOUG25584-C03 [Lateral]
Pronotalia
BIN URI: BOLD:ADE2011



BIOUG08665-D06 [Lateral]
Tetrastichinae
BIN URI: BOLD:ACO6910



BIOUG07143-F07 [Lateral]
Eulophidae
BIN URI: BOLD:ACJ0181



BIOUG15962-F03 [Lateral]
Alloxysta
BIN URI: BOLD:AAU8458



ASGLE-0334 [Lateral]
Eucoilinae
BIN URI: BOLD:AAP6708



RMNH.INS.549440 [Lateral]
Lasius niger
BIN URI: BOLD:ABZ8330



09BBEHY-1658 [Lateral]
Gelis festinus
BIN URI: BOLD:AAM7431



BIOUG22453-A04 [Lateral]
Megaspilidae
BIN URI: BOLD:ACJ1417



BIOUG20012-D01 [Lateral]
Alaptus
BIN URI: BOLD:ACI9987



BIOUG04144-F04 [Lateral]
Anagrus
BIN URI: BOLD:AAN9413



BIOUG08412-F09 [Lateral]
Myrmariidae
BIN URI: BOLD:ACK1742



BIOUG25654-E07 [Lateral]
Platygastrinae
BIN URI: BOLD:ACD3193



BIOUG16041-A12 [Dorsal]
Trissolcus
BIN URI: BOLD:ACP9474



BIOUG02687-C09 [Lateral]
Platygastridae
BIN URI: BOLD:ABY3607



RMNH.INS.554151 [Dorsal]
Phyllonorycter mespilella
BIN URI: BOLD:AAC1755



NHMO-08265 [Dorsal]
Noctua comes
BIN URI: BOLD:AAA2633



BIOUG00863-C09 [Dorsal]
Ectopsocus californicus [skewed]
BIN URI: BOLD:AAY6680



BIOUG02180-D05 [Lateral]
Ectopsocus
BIN URI: BOLD:AAY6687



BIOUG07286-H03 [Lateral]
Ectopsocidae
BIN URI: BOLD:AAP2620



BIOUG10449-H06 [Lateral]
Philotarsus picicornis
BIN URI: BOLD:ACB7137



08RMCAD-0682 [Lateral]
Limnephilus nogus
BIN URI: BOLD:AAJ2663