

Image Library - SEARCH: Process ids(86 ids)

Print

Parameters

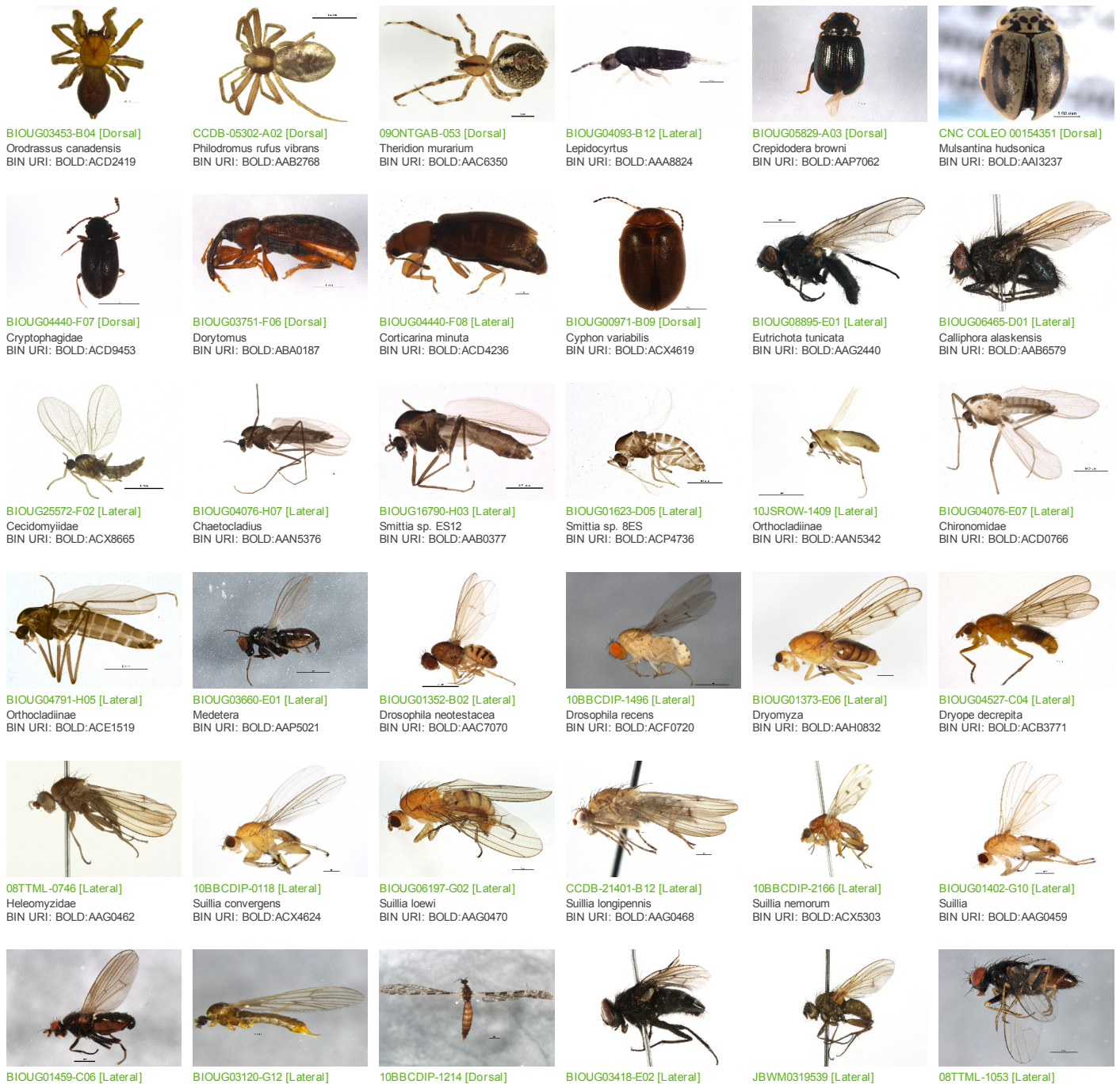
Records Included: All records
 Filter Image by Orientation: None
 Aspect Ratio: Normalized 3:2

Result Summary

Total Records: 86

Re-render images: per row

5000 Records Per Page - Pages: 1



Lauxaniidae
BIN URI: BOLD:AAP6482



10BBCDIP-2971 [Lateral]
Helina annosa
BIN URI: BOLD:AAK4683

Molophilus
BIN URI: BOLD:AAP8637



BIOUG20435-C01 [Lateral]
Boletina
BIN URI: BOLD:ABA3065

Rhipidia
BIN URI: BOLD:AAZ6705



BIOUG05228-E11 [Lateral]
Alodia
BIN URI: BOLD:AAG4936

Muscina sp. 1 AKR
BIN URI: BOLD:AAB8818



BIOUG04859-H07 [Lateral]
Exechia
BIN URI: BOLD:AAQ3544

Thricops albasalis
BIN URI: BOLD:AAD2373



BIOUG01402-G02 [Lateral]
Mycetophiliidae
BIN URI: BOLD:AAG4931

Lisopcephala erythrocerca
BIN URI: BOLD:AAG1704



BIOUG05324-C03 [Lateral]
Mycetophila
BIN URI: BOLD:AAG4872



BIOUG21429-A02 [Lateral]
Mycetophilinae
BIN URI: BOLD:AAM8992



BIOUG03849-F12 [Lateral]
Sceptonia
BIN URI: BOLD:ABV3032



BIOUG22807-E07 [Lateral]
Mycomya affinis
BIN URI: BOLD:AAH3524



BIOUG05931-H01 [Lateral]
Mycetophiliidae
BIN URI: BOLD:ACG5774



BIOUG31140-H02 [Lateral]
Mycetophiliidae
BIN URI: BOLD:ADE3338



BIOUG04053-F09 [Lateral]
Megaselia variana
BIN URI: BOLD:AAZ6701



BIOUG02979-G05 [Lateral]
Megaselia
BIN URI: BOLD:AAN8679



BIOUG26490-B10 [Lateral]
Megaselia
BIN URI: BOLD:ACZ4279



10BBCDIP-1425 [Lateral]
Psilidae
BIN URI: BOLD:AAP7687



BIOUG14582-B09 [Lateral]
Psychodidae
BIN URI: BOLD:AAF9320



BIOUG09014-C05 [Lateral]
Lycoriella
BIN URI: BOLD:AAL7874



BIOUG01915-F08 [Lateral]
Sciaridae
BIN URI: BOLD:AAM9235



BIOUG18754-C10 [Lateral]
Sciaridae
BIN URI: BOLD:ACS8037



NIBGE APH-00163 [Dorsal]
Rhopalosiphum padi
BIN URI: BOLD:AAA9899



BIOUG00947-F08 [Dorsal]
Chaitophorus neglectus
BIN URI: BOLD:AAB4394



10BBCHEM-0562 [Lateral]
Chaitophorus stvensis
BIN URI: BOLD:AAH2877



BIOUG00901-D02 [Lateral]
Clastoptera obtusa
BIN URI: BOLD:AAG8823



BIOUG00906-D08 [Dorsal]
Physatocheila variegata
BIN URI: BOLD:ACD0489



BIOUG04267-H01 [Lateral]
Meteorus ictericus
BIN URI: BOLD:AAZ6797



BIOUG06887-H04 [Lateral]
Homolobus
BIN URI: BOLD:ACI8851



10BBCHY-2266 [Lateral]
Diapriidae
BIN URI: BOLD:ABX5571



BIOUG03621-E11 [Lateral]
Diapriidae
BIN URI: BOLD:ACC5658



BIOUG04659-H06 [Lateral]
Diapriidae
BIN URI: BOLD:ACD0542



BIOUG09342-A01 [Lateral]
Diapriidae
BIN URI: BOLD:ACL1455



10BBCHY-0237 [Lateral]
Charipinae
BIN URI: BOLD:AAR5718



07PROBE-23705 [Lateral]
Cryptinae
BIN URI: BOLD:AAD0970



BIOUG31140-F11 [Lateral]
Cryptinae
BIN URI: BOLD:ADE1169



10PHMAL-3230 [Lateral]
Orthocentrus
BIN URI: BOLD:AAU8218



BIOUG04528-A11 [Lateral]
Plectiscidea
BIN URI: BOLD:ACF8995



ASGLE-0285 [Lateral]
Hymenoptera
BIN URI: BOLD:AAP6689



BIOUG04737-D08 [Lateral]
Orthocentrinae
BIN URI: BOLD:ACE1273



BIOUG21320-C07 [Lateral]
Megaspilidae
BIN URI: BOLD:ACV0580



BIOUG06549-D04 [Lateral]
Platygastriinae
BIN URI: BOLD:ACI7747



CNLEP00087632 [Dorsal]
Scoparia biplagiialis
BIN URI: BOLD:AAA1518



CCDB-24283-G09 [Dorsal]
Anacamptis niveopulvella
BIN URI: BOLD:AAC2309



CNLEP00082494 [Dorsal]
Operophtera bruceata
BIN URI: BOLD:AAA2999



10BBCLP-2125 [Lateral]
Micruarpteryx salicifoliella
BIN URI: BOLD:AAD5801



CNLEP00029461 [Dorsal]
Phyllocnistis sp.
BIN URI: BOLD:AAF6337



MM25284 [Dorsal]
Phyllocnistis labyrinthella
BIN URI: BOLD:ACX5473



NorBOL LepVM135 [Dorsal]
Mompha stumppennella
BIN URI: BOLD:AAD0701



CGWC-4120 [Dorsal]
Xylena cineritia
BIN URI: BOLD:ABZ7519



CGWC-3911 [Dorsal]
Acleris celiaria
BIN URI: BOLD:AAB6218



MDH000895 [Dorsal]
Acleris semiannula
BIN URI: BOLD:AAB4304



CNCLEP00101768 [Dorsal]
Acleris minuta
BIN URI: BOLD:AAE3758