

# Image Library - SEARCH: Process ids(81 ids)

Print

## Parameters

Records Included: All records  
 Filter Image by Orientation: None  
 Aspect Ratio: Normalized 3:2

## Result Summary

Total Records: 81

Re-render images:  per row

5000 Records Per Page - Pages: 1



BIOUG02782-G05 [Dorsal]  
*Erigone alertris*  
 BIN URI: BOLD:AAD1746



BIOUG16048-H10 [Dorsal]  
 Phytoseiidae  
 BIN URI: BOLD:ACP9436



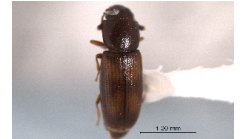
BIOUG04183-E11 [Lateral]  
 Oribatulidae  
 BIN URI: BOLD:ACE2004



BIOUG03932-C02 [Dorsal]  
*Entomobrya multifasciata*  
 BIN URI: BOLD:AAA7242



TDWG-0539 [Dorsal]  
 Bourletiellidae  
 BIN URI: BOLD:AAAN4907



CNC COLEO 00159788 [Dorsal]  
*Rhizophagus minutus minutus*  
 BIN URI: BOLD:ACA9101



BIOUG01460-G02 [Lateral]  
 Agromyzidae  
 BIN URI: BOLD:AAD1945



BIOUG01411-C06 [Lateral]  
 Anthomyiidae  
 BIN URI: BOLD:AAAN5497



10JSROW-1665 [Lateral]  
*Lucilia*  
 BIN URI: BOLD:AAA7470



BIOUG17416-B10 [Lateral]  
 Cecidomyiidae  
 BIN URI: BOLD:AAU6594



10BBCDIP-3472 [Lateral]  
 Cecidomyiidae  
 BIN URI: BOLD:AAV5607



BIOUG01440-H05 [Lateral]  
*Bryophaenocladius* sp. 8ES  
 BIN URI: BOLD:AAG1021



BIOUG03918-H04 [Lateral]  
*Gymnometrioctenemus*  
 BIN URI: BOLD:ACC8307



BIOUG20601-A05 [Lateral]  
*Limnophyes* sp. 14ES  
 BIN URI: BOLD:ABU5525



BIOUG01337-H06 [Lateral]  
*Smittia*  
 BIN URI: BOLD:AAG1019



CNC DIPTERA 163654 [Lateral]  
*Medetera* sp. SEB5  
 BIN URI: BOLD:ACA1124



BIOUG25614-B08 [Lateral]  
 Dolichopodidae  
 BIN URI: BOLD:ACH2821



BIOUG12241-D04 [Lateral]  
*Tachypeza corticalis*  
 BIN URI: BOLD:AAP2863



BIOUG25549-B07 [Lateral]  
 Hybotidae  
 BIN URI: BOLD:ACX8977



BIOUG07176-G01 [Lateral]  
*Ormosia affinis*  
 BIN URI: BOLD:ADD3496



BIOUG03702-B04 [Lateral]  
*Coenosia pilosissima*  
 BIN URI: BOLD:AAP6478



CCDB-12827-H07 [Lateral]  
*Coenosia tigrina*  
 BIN URI: BOLD:AAB5609



CCDB-23518-G08 [Lateral]  
*Helina aldrichi*  
 BIN URI: BOLD:AAC2498



BIOUG07588-D11 [Lateral]  
*Helina*  
 BIN URI: BOLD:ACG5222



BIOUG03731-E10 [Lateral]  
 Mycetophilidae  
 BIN URI: BOLD:AAP9072



BIOUG06564-C11 [Lateral]  
 Mycetophila  
 BIN URI: BOLD:ACJ0451



BIOUG01920-C07 [Lateral]  
 Megaselia  
 BIN URI: BOLD:AAG3303



BIOUG18220-F12 [Lateral]  
 Megaselia  
 BIN URI: BOLD:AAP8728



BIOUG01666-A06 [Lateral]  
 Phoridae  
 BIN URI: BOLD:ACF3749



BIOUG23900-B01 [Lateral]  
 Megaselia  
 BIN URI: BOLD:ACX6055



BIOUG01423-F09 [Lateral]



BIOUG08898-E03 [Lateral]



BIOUG22365-F03 [Lateral]



BIOUG01392-A02 [Lateral]

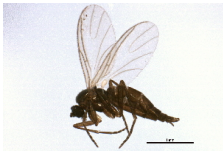


BIOUG21933-D08 [Lateral]



BIOUG02936-E01 [Lateral]

*Psychoda alternata*  
BIN URI: BOLD:AAF9306



BIOUG16100-H07 [Lateral]  
*Bradysia*  
BIN URI: BOLD:ACP3959

*Scathophaga furcata*  
BIN URI: BOLD:ACX4405



BIOUG16158-G10 [Lateral]  
*Bradysia*  
BIN URI: BOLD:ACP9604

*Bradysia atroparva*  
BIN URI: BOLD:AAM9243



BIOUG01591-A12 [Lateral]  
*Cratyna vagabunda*  
BIN URI: BOLD:AAQ2557

*Bradysia placida*  
BIN URI: BOLD:ACR4350



BIOUG13237-B05 [Lateral]  
*Ctenosciara hyalipennis*  
BIN URI: BOLD:AAH3983

*Bradysia tillicola*  
BIN URI: BOLD:AAZ2139



BIOUG02987-C06 [Lateral]  
*Lycoriella sativae*  
BIN URI: BOLD:ABA1215

*Bradysia impatiens*  
BIN URI: BOLD:AAV1295



BIOUG25626-D09 [Lateral]  
Sciaridae  
BIN URI: BOLD:ACB9102



BIOUG16160-A08 [Lateral]  
Sciaridae  
BIN URI: BOLD:ACP7943



BIOUG18752-F05 [Lateral]  
Sciaridae  
BIN URI: BOLD:ACS7465



BIOUG14578-G09 [Lateral]  
*Syrphus torvus*  
BIN URI: BOLD:AAC6088



CNC DIPTERA 104687 [Lateral]  
*Athrycia cinerea*  
BIN URI: BOLD:AAP8649



BIOUG00806-A04 [Dorsal]  
*Anoezia fulviabdominalis*  
BIN URI: BOLD:AAH2871



BIOUG24149-B08 [Lateral]  
*Cavariella aegopodii*  
BIN URI: BOLD:AAD2527



BIOUG25633-B02 [Lateral]  
*Uroleucon achilleae*  
BIN URI: BOLD:ACL3424



BIOUG03101-E06 [Lateral]  
*Essigella*  
BIN URI: BOLD:ACC4249



BIOUG00901-C04 [Lateral]  
*Philaenus spumarius*  
*quadrifaculatus*  
BIN URI: BOLD:AAB1850



BIOUG02286-E11 [Dorsal]  
*Dikraneura mali*  
BIN URI: BOLD:AAO8340



BIOUG16063-D09 [Lateral]  
*Empoasca*  
BIN URI: BOLD:AAN8406



BIOUG22059-A02 [Dorsal]  
*Erythridula*  
BIN URI: BOLD:ACU7199



BIOUG00947-A01 [Lateral]  
*Typhlocyba rosae*  
BIN URI: BOLD:ABA5828



CNC#HEM301041 [Dorsal]  
*Gastrosdes pacificus*  
BIN URI: BOLD:ABA0191



BIOUG25633-E06 [Lateral]  
*Dinotrema*  
BIN URI: BOLD:ACP4606



BIOUG16058-B03 [Lateral]  
*Aphidius schimitscheki*  
BIN URI: BOLD:AAF7225



BIOUG24593-B08 [Lateral]  
Tetrastichinae  
BIN URI: BOLD:AAU9507



ASGLE-0334 [Lateral]  
Eucoilinae  
BIN URI: BOLD:AAP6708



BIOUG03412-E10 [Lateral]  
Eucollinae  
BIN URI: BOLD:ACC1189



08BBHYM-0786 [Lateral]  
*Lasius*  
BIN URI: BOLD:AAA9048



RMNH.INS.549502 [Lateral]  
*Myrmica scabrinodis*  
BIN URI: BOLD:ABY4844



BIOUG16099-D11 [Lateral]  
*Stenamma*  
BIN URI: BOLD:ACP7990



BIOUG01291-E11 [Lateral]  
*Diadegma nr. Fenestratale*  
BIN URI: BOLD:AAG7740



10BBCHY-0093 [Lateral]  
Orthocentrinae  
BIN URI: BOLD:AAU9483



BIOUG20012-D01 [Lateral]  
*Alaptus*  
BIN URI: BOLD:ACI9987



BIOUG22674-H09 [Lateral]  
*Telenomus podisi*  
BIN URI: BOLD:ADB3484



BIOUG13859-E11 [Lateral]  
*Telenomus*  
BIN URI: BOLD:ACN7751



BIOUG25612-G09 [Lateral]  
*Telenomus*  
BIN URI: BOLD:ACX1641



BIOUG15686-A08 [Lateral]  
Platygastridae  
BIN URI: BOLD:ACP9611



BIOUG05770-H11 [Lateral]  
Trichogrammatidae  
BIN URI: BOLD:ACC6467



MDH007540 [Dorsal]  
*Crambus leachellus* [skewed]  
BIN URI: BOLD:AAA9221



BIOUG00849-H05 [Dorsal]  
*Neoalcis californiaria*  
BIN URI: BOLD:ABZ2954



10BBNEU-0006 [Lateral]  
*Hemerobius*  
BIN URI: BOLD:AAM7043



BIOUG04117-D05 [Lateral]  
*Valenzuela burmeisteri*  
BIN URI: BOLD:AAO4092



BIOUG04218-E11 [Lateral]  
*Valenzuela*  
BIN URI: BOLD:ACR3866



TDWG-0516 [Lateral]  
*Ectopsocus briggsi*  
BIN URI: BOLD:AAN8452



BIOUG02180-D05 [Lateral]  
*Ectopsocus*  
BIN URI: BOLD:AAV6687



BIOUG03104-F09 [Lateral]  
*Cerobasis guestfalica*  
BIN URI: BOLD:ACX5665



08RMCAD-0682 [Lateral]  
*Limnephilus nogus*  
BIN URI: BOLD:AAJ2663