

FIGURES

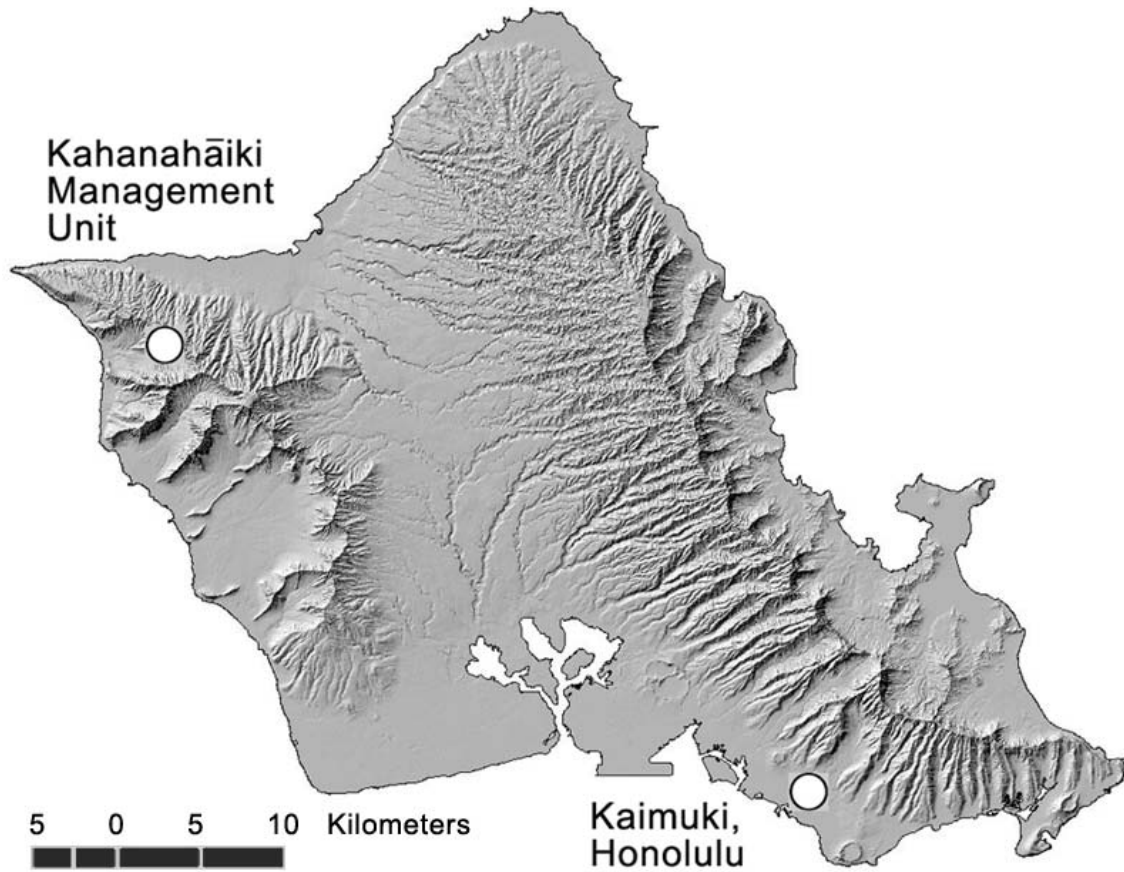


Figure 2.1. Slug collection sites. *Laevicaulis alte* and *Veronicella cubensis* were collected in Kaimuki, while the remainder were collected in Kahanahāiki Management Unit, a forested area managed by the U.S. Army in the Wai‘anae Mountains.

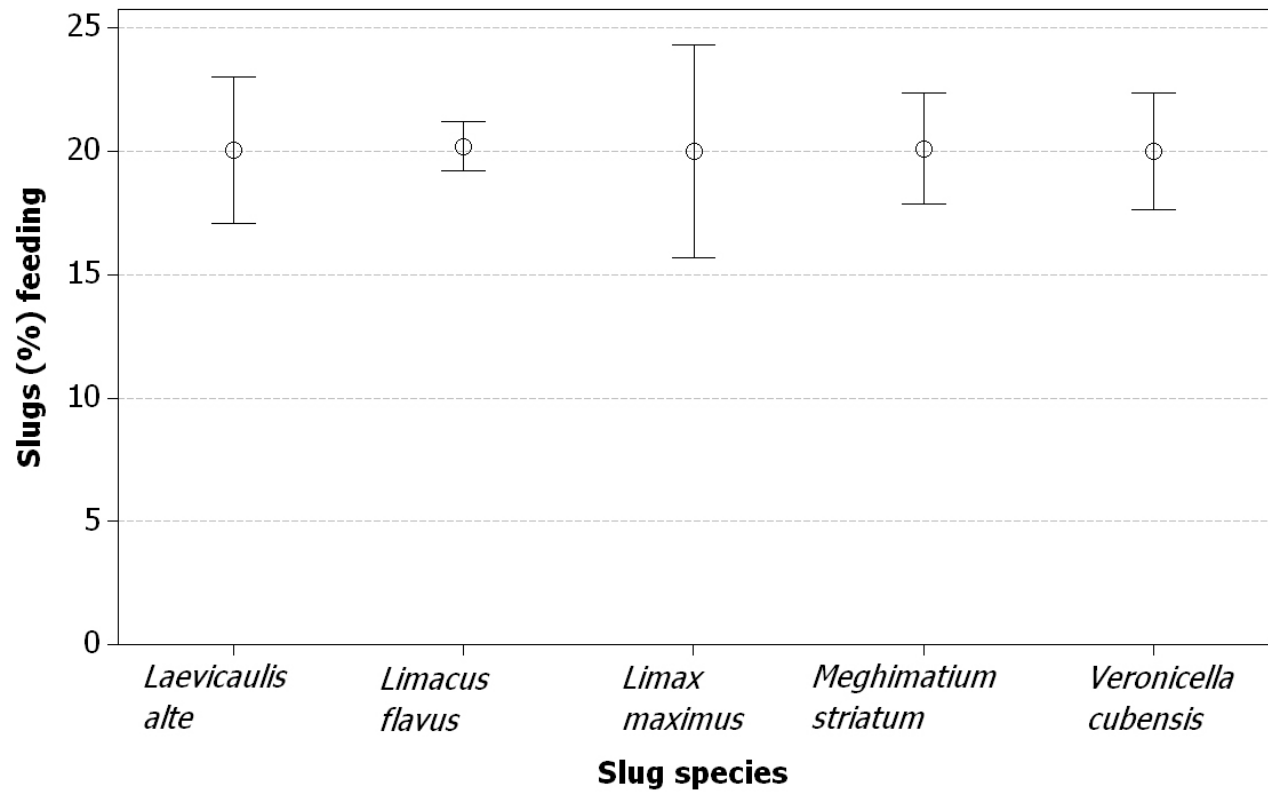


Figure 2.2. Percent of slugs (bars are one SEM) engaged in feeding (i.e. ate all or a portion of the control species), averaged among five feeding trials.

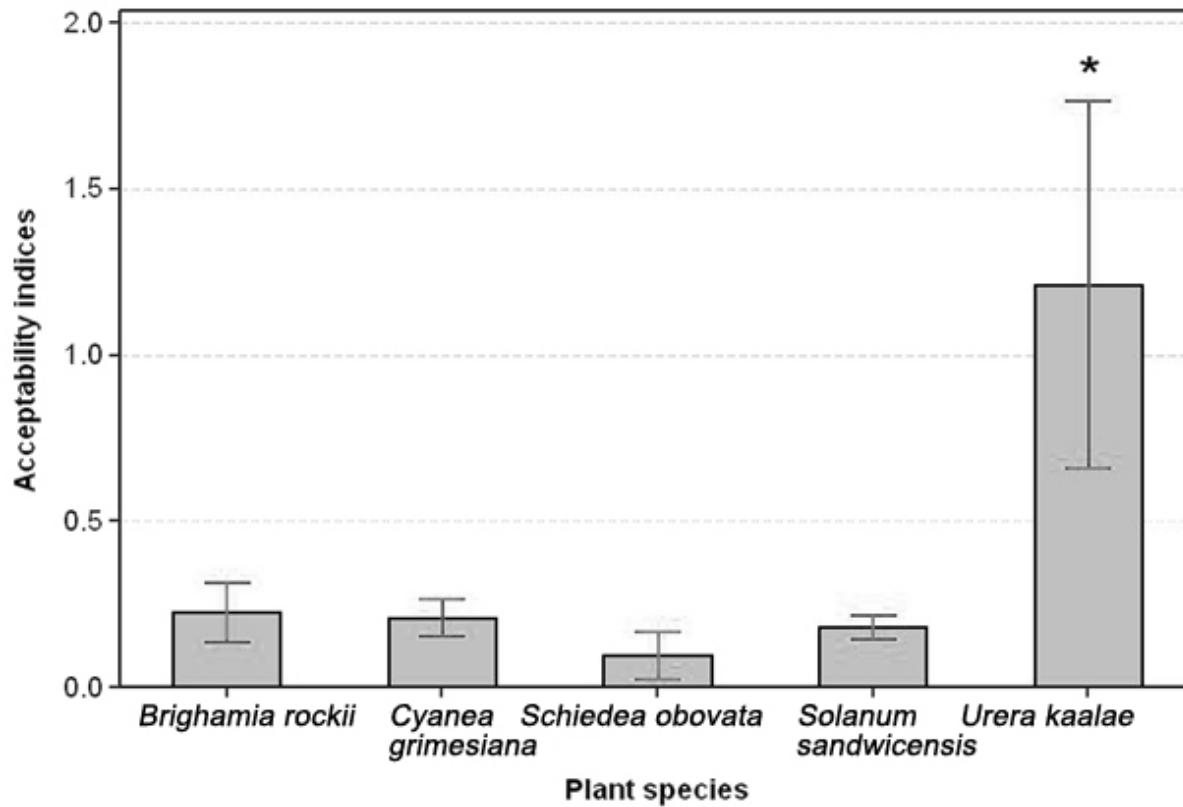


Figure 2.3. Mean AI scores (bars are one SEM) for each plant species (all slug species pooled). The asterisk (*) indicates that this group differs significantly ($P < 0.05$) from the rest (Tukey's HSD).

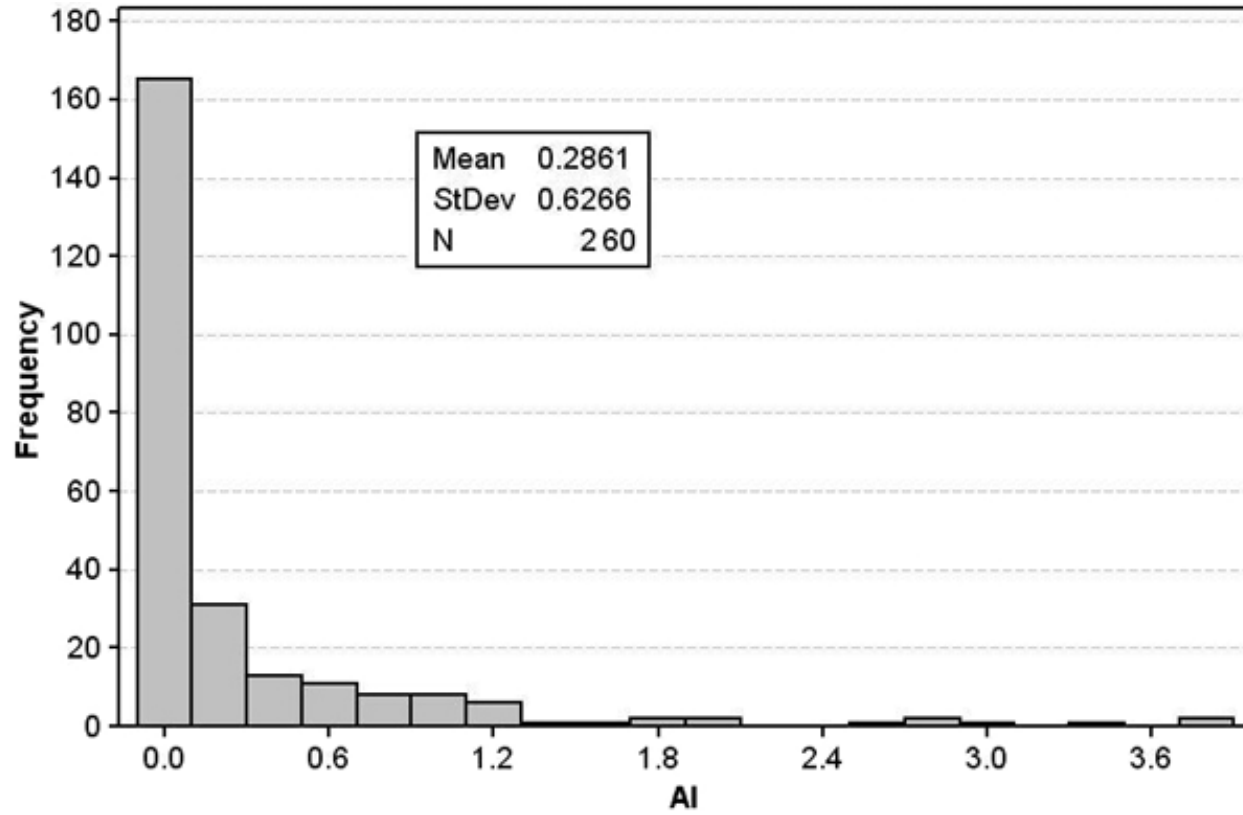


Figure 2.4. Distribution of AI scores (all slug species and plants combined) (single data point of AI = ~31 not shown).

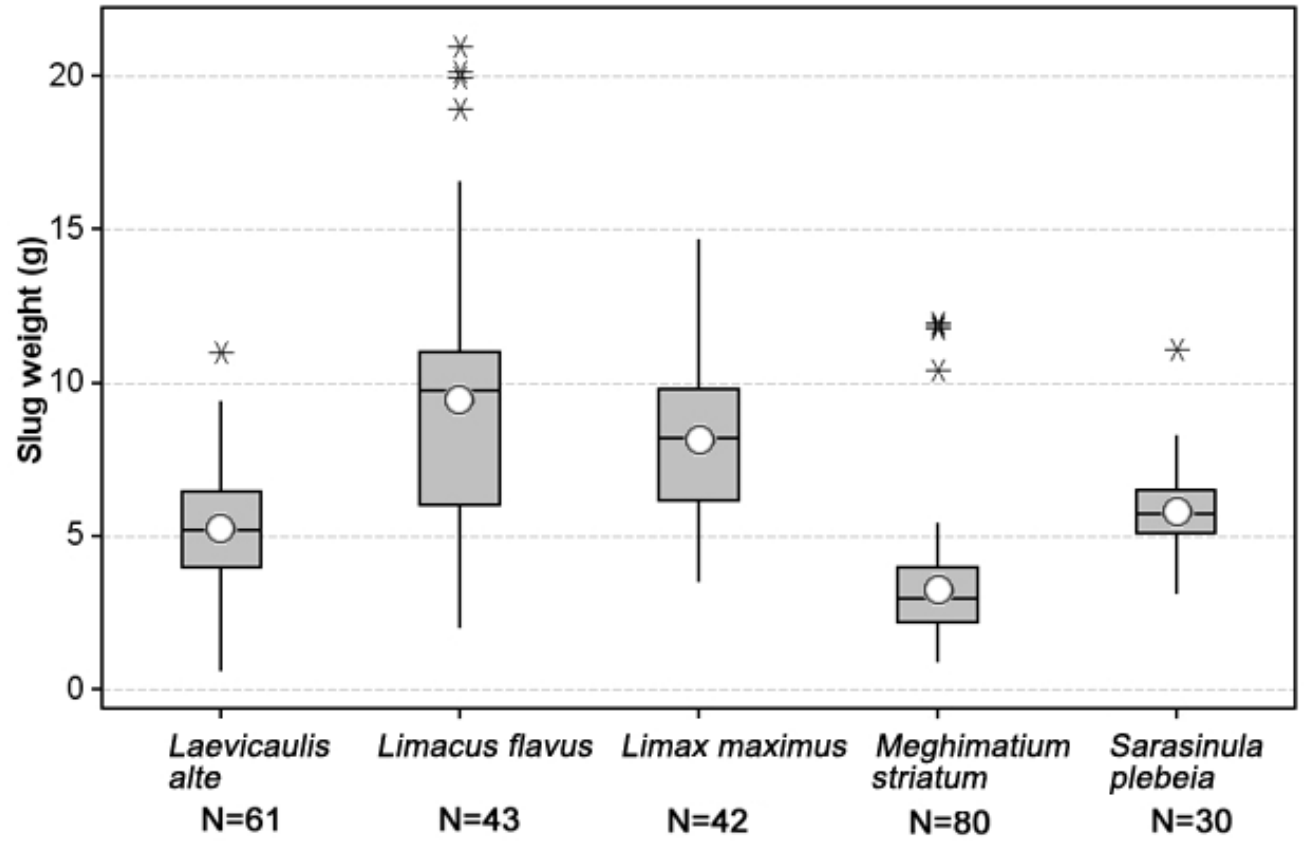


Figure 2.5. Boxplot showing weight distribution of slug species. Outliers are marked with asterisks (*). Circles indicate means.