

## The Geometry of the Marmot (Rodentia: Sciuridae) Mandible: Phylogeny and Patterns of Morphological Evolution

ANDREA CARDINI

Division of Mammals, Department of Vertebrate Zoology, NHB 390, MRC 108, National Museum of Natural History, Smithsonian Institution, P.O. Box 37012, Washington, DC 20013-7012, USA; E-mail: cardini@nmmh.si.edu

**Abstract.**—Marmots have a prominent role in the study of mammalian social evolution, but only recently has their systematics received the attention it deserves if sociobiological studies are to be placed in a phylogenetic context. Sciurid morphology can be used as model to test the congruence between morphological change and phylogeny because sciurid skeletal characters are considered to be inclined to convergence. However, no morphological study involving all marmot species has ever been undertaken. Geometric morphometric techniques were applied in a comparative study of the marmot mandible. The adults of all 14 living marmot species were compared, and mean mandible shape were used to investigate morphological evolution in the genus *Marmota*. Three major trends were observed. First, the phylogenetic signal in the variation of landmark geometry, which describes mandible morphology, seems to account for the shape differences at intermediate taxonomic levels. The subgenera *Marmota* and *Petromarmota*, recently proposed on the basis of mitochondrial cytochrome *b* sequence, receive support from mandible morphology. When other sciurid genera were included in the analysis, the monophyly of the genus *Marmota* and that of the tribe Marmotini (i.e., marmots, prairie dogs, and ground squirrels) was strengthened by the morphological data. Second, the marmotine mandible may have evolved as a mosaic of characters and does not show convergence determined by size similarities. Third, allopatric speciation in peripheral isolates may have acted as a powerful force for modeling shape. This hypothesis is strongly supported by the peculiar mandible of *M. vancouverensis* and, to a lesser degree, by that of *M. olympus*, both thought to have originated as isolated populations in Pleistocene ice-free refugia. [Geometric morphometrics; mandible; *Marmota*; morphological evolution; phylogeny; sciurid convergence.]

Marmots are large Holarctic rodents (Figs. 1, 2) with marked adaptations for living in cold climates (Barash, 1989; Armitage, 2000). Hibernation, size increase, suppression of reproduction, and sociality are among the evolutionary responses to the selective pressures of harsh environments (Barash, 1974; Armitage, 1981, 2000) such as those of the periglacial zone in which marmots are believed to have evolved (Zimina and Gerasimov, 1973, cited by Armitage, 2000). The genus appeared in North America about 9.5 million years ago and crossed the Bering Strait to colonize Eurasia at the end of the Pliocene or the beginning of the Pleistocene (Mein, 1992; Steppan et al., 1999). The increasing abundance and diversification of the fossils during the Pleistocene witness the marmot radiation in the Palaeartic (Lyapunova et al., 1992; Mein, 1992; Armitage, 2000). However, the fossil record is often fragmentary and of uncertain attribution (Rumiantsev and Bibikov, 1994) and thus of little help in supporting hypotheses on the vagaries of marmot evolution.

Despite a very large number of ecoethological studies on marmots and the centrality of this taxon for understanding the evolution of mammalian society, the phylogeny of the genus *Marmota* has been poorly studied. The lack of a reliable phylogeny may undermine any attempt to take into account the lack of independence in interspecific comparisons due to phylogenetic relationships (Felsenstein, 1985; Harvey and Pagel, 1991), thus preventing meaningful tests for hypotheses on the evolution of highly social behaviors (Blumstein and Armitage, 1998). Biogeographic questions of great interest for understanding the faunal interchange across the Bering Strait, such as the disputed geographic origins of the Alaskan marmot (*M. broweri*) and of the black-capped marmot (*M. camtschatica*), have remained unanswered.

*Marmota broweri* has been considered by different authors either as a recent offshoot of a Palaeartic lineage returned to the Nearctic (Gromov et al., 1965, cited by Steppan et al., 1999; Hoffmann and Nadler, 1968; Hoffmann et al., 1979) or as a subspecies of the North American *M. caligata* (Hall, 1981). *Marmota camtschatica* has been considered a possible member of the North American marmot group (Lyapunova et al., 1992), which became isolated from its Palaeartic relatives when Beringia was covered by the ocean.

Only recently have researchers tried to address many of the questions of marmot phylogeny using molecular techniques. Comparisons of cytochrome *b* (*cyt b*) sequences (Kruckenhauser et al., 1999; Steppan et al., 1999) have produced gene trees suggesting that there are two main marmot lineages in which complex societies have evolved independently. The subgenus *Petromarmota* includes western North American species (all Nearctic species except *M. monax* and *M. broweri*), and the subgenus *Marmota* is a large clade of Palaeartic marmots plus the two North American species, *M. monax* and *M. broweri*. This subgeneric classification has not yet been supported by the analysis of different sets of characters, and a large polytomy at the base of the predominantly Palaeartic clade has remained unresolved. Thus, the relationships among two Eurasiatic monophyletic groups, the Alpine marmot (*M. marmota*) and the two North American species belonging to the subgenus *Marmota*, are not fully understood. The basal position of the woodchuck (*M. monax*) in the subgenus *Marmota* is not surprising because it has the same chromosome number as the majority of Eurasiatic marmots ( $2n = 38$ ), but the emergence of the Alaskan marmot at the root of this clade was completely unexpected. The Alpine marmot seems to be an ancient lineage, close to the ancestor of the



FIGURE 1. Young Alpine marmots (*Marmota marmota*) chewing flowers (top) and biting each other during play (bottom). (Photos by L. Gaudenzio.)

Palaeartic clade, which may help explain some unusual features of this species. All the Eurasiatic species except the Alpine marmot are parasitized by the flea *Oropsylla silantiewi* and are characterized by soft and fine black-tipped guard hairs. *Marmota marmota* also does not have a low-frequency alarm call component, which is present in all the other Palaeartic marmots (Rumiantsev and Bibikov, 1994). The peculiarities of the Alpine marmot, which are partially shared by North American marmots, might represent symplesiomorphies of the ancestor of all living marmots.

Morphometrics is becoming an increasingly important counterpart of molecular phylogenetics. The presumed propensity of the sciurid skeleton for convergence induced by ecological or size similarities (Hafner, 1984; Roth, 1996; Velhagen and Roth, 1997) has led scientists to apply the most modern morphometric techniques to study the correspondence between phenetics, based on quantitative osteological characters, and molecular cladistics (Swiderski, 1993; Swiderski and Jansa, 1998). The close agreement between molecular cladograms and phylogenetic hypotheses suggested by cranial characters for a group of terrestrial squirrels (Swiderski and Jansa,



FIGURE 2. Geographic distribution of the 14 *Marmota* species (modified from Barash, 1989).

1998) and the appearance of the sciurid scapula as a mix of distinct and integrated parts (Swiderski, 1993) have raised doubts about the hypothesis that the sciurid skeleton is a highly integrated structure, inclined to convergence (Roth, 1996).

However, despite several attempts to combine morphometric data with methods for phylogenetic inference, no consensus has been achieved among taxonomists about how this should be done, and splitting continuous morphometric data into meristic characters suitable for phylogenetic analysis is still considered problematic (various authors have addressed this issue; see MacLeod and Forey, 2002). Morphometrics is thus employed for the postcladistic morphological analysis of monophyletic groups (Smith, 1990) found in gene trees and for the analysis of patterns of morphological evolution.

Geometric morphometrics (Bookstein, 1991; Rohlf and Marcus, 1993; Corti et al., 2000; O'Higgins, 2000) allows comparisons of the geometric form of a structure as described by a set of topographically corresponding points (landmarks). This technique provides morphologists with a powerful tool for testing congruence between morphological and molecular data and for studying the ontogeny of organism shape (e.g., allometric growth) and the evolutionary forces modeling biological forms (e.g., size- or ecology-dependent homoplasies and the effects of genetic drift on the rate of morphological evolution). The application of geometric morphometric techniques to the study of the sciurid skeleton (Swiderski, 1993; Swiderski and Jansa, 1998) has produced results contrasting with those obtained with different analytical

methods (Hafner, 1984; Roth, 1996; Velhagen and Roth, 1997). Beyond methodological differences, the authors of these various studies have considered different characters (Velhagen and Roth (1997), analyzed the mandible; Swiderski (1993) compared the scapula) or have focused mainly on tree squirrels (Roth, 1996; Velhagen and Roth, 1997) rather than on terrestrial squirrels (Hafner, 1984; Swiderski and Jansa, 1998).

In spite of the recent interest in marmot phylogeny and the evolution of skeletal structures in the marmotines, a morphological study involving all marmot species has not been performed. A particularly suitable structure for comparing marmot form is the mandible. This bone is both simple and highly informative. The sciurid hemimandible is nearly flat and can be analyzed in two dimensions (Velhagen and Roth, 1997), but its trophic and possibly defensive function and its strict connection with the skull, which houses the brain and sense organs, make it a potential target for natural selection. For instance, changes in diet or in the agonistic interactions (sexual selection, defence from predators, etc.) may create selective pressures that contribute to shape the mandible (Thorington and Darrow, 1996; Cardini and Tongiorgi, in press). Body size increase to accumulate more resources for survival in harsh environments (Armitage, 1999) may imply morphological remodeling of the entire skeleton; functions could be lost if size changes happened without compensatory adjustments in shape (Emerson and Bramble, 1993). The rodent mandible has been the subject of several morphological and phylogenetic studies (Thorpe et al., 1982; Atchley et al., 1992; Corti et al., 1996; Velhagen and Roth, 1997; Swiderski et al., 1999; Astua de Morales et al., 2000; Duarte et al., 2000; Corti and Rohlf, 2001), with particular attention paid to the relationships between the mandible and the jaw muscles (Hiimae, 1971a, 1971b; Hiimae and Houston, 1971; Ball and Roth, 1995; Thorington and Darrow, 1996; Cardini and Tongiorgi, in press). The mandible ontogenesis and the genetic bases of its development also have been investigated (Atchley et al., 1992; Cheverud et al., 1997; Klingenberg and Leamy, 2001; Klingenberg et al., 2001).

Beyond the importance of marmots for sociobiologists and sciurid morphologists, the fur industry, and sanitation (control of plague foci), the recognition of marmot genetic and morphological peculiarities will allow detection of species uniqueness, helping conservationists to protect marmots. Marmot conservation is a hot issue for biologists trying to preserve biodiversity. The Vancouver Island marmot (*M. vancouverensis*) is threatened with extinction, surviving with a population of <50 individuals, and biologists are trying to breed some specimens in captivity for future reintroductions (Bryant, 1997). The Menzbier marmot (*M. menzbieri*) lives in small populations inhabiting a restricted area of the western Tian Shan, south of the Siberian steppe. Its biology and conservation status are poorly known, but it is considered among those vulnerable to extinction (Hoffmann et al., 1993). *Marmota caudata* and *M. himalayana* are in Appendix III of the Indian CITES.

We sought answers for the following questions. Are molecular and morphological data on marmots congruent? To answer this question, the main focus was on verifying whether the subgeneric classification of marmots is supported by the comparison of their mandibles; confirmation of the marmot subgenera would imply that the highest levels of sociality have independently evolved at least twice (Kruckenhauser et al., 1999). If morphological relationships among the studied species do not reflect their phylogeny, is the mandibular shape convergent because of size similarities? Does the mandible suggest any pattern of morphological evolution in the sciurids other than the presumed propensity for convergence of skeletal parts?

## METHODS

### *Specimens, Dental Measurements, and Digital Images*

The left hemimandibles of 518 marmots were photographed. Young animals and possible outliers were removed from the sample, and the analysis was performed on 388 adult marmots belonging to all living species (Table 1). Specimens were chosen when possible to represent the entire geographic range. Thirty-one specimens of other sciurid genera were included as an outgroup (Table 1). The list of the specimens, their museum catalog number and indication of the geographic origin (when available) is given in Appendix 1.

To estimate age classes using premolar wear (Appendix 2), the distances between the paraconid and protoconid cusps of the lower left premolar were measured with digital calipers to the nearest 0.1 mm. Precision was tested as described by Cardini and Tongiorgi (in press).

All images were captured on film using a single-lens reflex camera with a 180-mm APO MACRO lens, locked to a copy stand. The mandible was placed on a horizontal plane whose inclination could be adjusted. A spirit level was used to check that the lens and the specimen plane were parallel. The mandible rested on the lingual side of the horizontal ramus and the coronoid and condylar processes, and the labial side of each specimen was photographed. The height of the camera was adjusted to bring into focus the diastema region of each mandible to maintain a constant focal distance of 1 m from the camera to that region. Digital images were scanned directly from the 35-mm negative film as grayscale images at a resolution of 480 dpi with 210% magnification.

### *Geometric Morphometrics*

Marmot mandibles were analyzed using geometric morphometric procedures (Bookstein, 1991; Rohlf and Marcus, 1993; Dryden and Mardia, 1998; Rohlf, 1998a) and the computer programs of the TPS series (Rohlf, 1998b–1998d, 1999) and the program Morphue et al. (Slice, 1999). Landmarks were defined and digitized on the specimen images to capture their form. A geometric morphometric analysis involves three main steps (Bookstein, 1996, 2000) after the landmark coordinates have been recorded.

TABLE 1. Marmot and related species examined.

| Species                           | Taxonomic authority         | Males | Females | Total <sup>a</sup> |
|-----------------------------------|-----------------------------|-------|---------|--------------------|
| <b>Marmotini</b>                  |                             |       |         |                    |
| <i>Marmota</i>                    |                             |       |         |                    |
| <i>M. baibacina</i>               | (Kastschenko, 1899)         | 5     | 6       | 19                 |
| <i>M. bobak</i>                   | (Müller, 1776)              | 10    | 9       | 21                 |
| <i>M. broweri</i>                 | (Hall and Gillmore, 1934)   | 2     | 1       | 3                  |
| <i>Petromarmota caligata</i>      | (Eschscholtz, 1829)         | 17    | 25      | 44                 |
| <i>M. camtschatica</i>            | (Pallas, 1811)              | 10    | 9       | 20                 |
| <i>M. caudata</i>                 | (Geoffroy, 1844)            | 13    | 19      | 35                 |
| <i>P. flaviventris</i>            | (Audubon and Bachman, 1841) | 26    | 36      | 62                 |
| <i>M. himalayana</i>              | (Hodgson, 1841)             | 15    | 11      | 33                 |
| <i>M. marmota</i>                 | (Linneus, 1758)             | 11    | 8       | 51                 |
| <i>M. menzbieri</i>               | (Kashkarov, 1925)           | 3     | 3       | 7                  |
| <i>M. monax</i>                   | (Linneus, 1758)             | 19    | 25      | 55                 |
| <i>P. olympus</i>                 | (Merriam, 1898)             | 5     | 5       | 10                 |
| <i>M. sibirica</i>                | (Radde, 1862)               | 11    | 7       | 20                 |
| <i>P. vancouverensis</i>          | (Swarth, 1911)              | 4     | 4       | 8                  |
| <b>Outgroup</b>                   |                             |       |         |                    |
| <i>Spermophilus</i>               |                             |       |         |                    |
| <i>S. beldingi</i>                | (Merriam, 1888)             | 2     | b       | 3                  |
| <i>S. citellus</i>                | (Linneus, 1766)             | 3     | 3       | 6                  |
| <i>S. richardsoni</i>             | (Sabine, 1822)              | 1     | 1       | 3                  |
| <i>S. undulatus</i>               | (Pallas, 1778)              | ?     | ?       | 2 <sup>b</sup>     |
| <i>Otospermophilus variegatus</i> | (Erxleben, 1777)            |       | 2       | 2                  |
| <i>Cynomys</i>                    |                             |       |         |                    |
| <i>Leucocrossuromys leucurus</i>  | (Merriam, 1890)             |       | 1       | 1                  |
| <i>Cynomys ludovicianus</i>       | (Ord, 1815)                 | 1     | ?       | 5 <sup>b</sup>     |
| <b>Tamiini</b>                    |                             |       |         |                    |
| <i>Tamias</i>                     |                             |       |         |                    |
| <i>Eutamias sibiricus</i>         | (Laxmann, 1769)             | 1     | ?       | 2 <sup>b</sup>     |
| <i>Tamias striatus</i>            | (Linneus, 1758)             | 1     | 1       | 3                  |
| <b>Sciurini</b>                   |                             |       |         |                    |
| <i>Sciurus vulgaris</i>           | (Linneus, 1758)             | 1     | 3       | 4                  |

<sup>a</sup>Including specimens of unknown sex.

<sup>b</sup>No information on sex available.

*Computation of shape coordinates (generalized Procrustes analysis).*—The landmark configurations are translated so that their centroids (center of gravity) are placed in the same spot and rescaled to unit centroid size (a measure of the overall size computed as the square root of the sum of squared distances from the landmarks to the centroid of the landmarks). The configurations are then rotated so that the sum of squared distances among corresponding landmarks is a minimum. The square root of the sum of squared distances between the corresponding landmarks of the iteratively computed average (or consensus) configuration and that of a specimen is called the Procrustes chord distance to consensus (Rohlf and Slice, 1990).

*Multivariate analysis.*—The realigned landmark configurations are projected into a Euclidean space tangent to the shape space. The sample mean shape is chosen as the point of tangency to minimize the error in the projection onto the tangent space. After testing the closeness of the tangent space to the curved shape space by comparing the Procrustes distances in the shape space with the Euclidean distances in the tangent space (Rohlf,

1998d), the shape coordinates can be analyzed with multivariate statistical techniques (e.g., regressed onto the size or other variables or summarized with ordination methods).

*Visualization.*—The results of the analysis of the shape coordinates must be brought back into the picture plane where the landmarks have been collected (Bookstein, 2000). An especially effective tool for displaying morphological features by means of deformation grids (Thompson, 1917; Bookstein, 1991) is the thin-plate spline (TPS), which expresses a shape change as the smoothest possible deformation from a reference configuration of landmarks to a target configuration. Shape variables are computed as linear combinations of the original landmark coordinates, and they can be subdivided into a uniform component (shape changes that leave the grid lines parallel) and a set of partial warps (localized shape modifications). The TPS can illustrate and emphasize the shape differences among the specimens, and multivariate regressions or principal component analysis (relative warp analysis) of shape variables can be realized and their results visualized with deformation grids.

#### Mandible Landmarks

The following topographically corresponding (Marcus et al., 2000) and reliable landmarks (Cardini and Tongiorgi, in press) were chosen on the labial side of the left hemimandible (Fig. 3): 1) upper extreme anterior part of the incisor alveolus; 2) anterior top of the mandibular symphysis; 3) anterior extremity of the maxillary toothrow (premolar alveolus); 4) intersection of the dental ridge with the dorsal portion of the masseteric ridge (base of the coronoid process); 5) tip of the coronoid process; 6 and 7) anterior and posterior tips of the condyle; 8) posterior extremity of the angular process; 9) mental foramen.

#### Statistical Analyses

Sexual dimorphism and the significance of mandible size and shape differences among species were tested

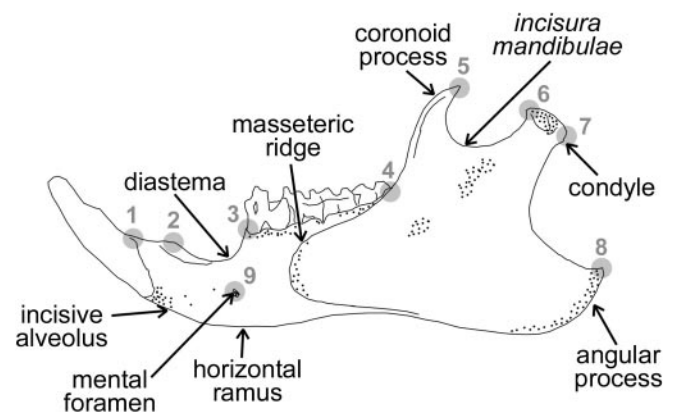


FIGURE 3. Marmot mandible anatomical regions and landmark configuration.

by means of two-way (sex  $\times$  species) analyses of variance for both centroid size (ANOVA) and shape variables (MANOVA). Canonical variate analysis (CVA) was also employed for testing shape differences between sexes and among species and for graphical illustrations of the MANOVA results. *Marmota broweri* was not included in analyses of differences with distinction between sexes because its very small sample of only two males and one female could lead to unstable results (e.g., the inclusion of *M. broweri* in the sex  $\times$  species MANOVA of shape variables resulted in  $P$  values for sex effect two orders of magnitude larger than those obtained without this species).

Univariate normality of the centroid size (CS) and shape variables was tested when the sample size was  $\geq 10$ . The Kolmogorov–Smirnov test led to  $P$  values always  $> 0.01$ , but possible deviations from normality could be occasionally found in the histograms. Marcus (1990) remarked that the assumption of (multivariate) normality is especially difficult to test in taxonomy, where large samples are uncommon.

Heteroscedasticity was detected for CS in the sex  $\times$  species ANOVA (Levene's test:  $F_{25,291} = 2.879$ ;  $P = 1.1 \times 10^{-5}$ ). Variance-covariance matrices were not homogeneous ( $\chi^2 = 1362.8$ ,  $df = 945$ ,  $P < 0.0001$ ; Box  $M = 1601.0$ ,  $F_{945,43978.6} = 1.344$ ,  $P = 2.0 \times 10^{-11}$ ) as tested in a sample of species with  $n > 14$  (the number of shape variables). This is another rather common problem in taxonomic comparisons. However, the ANOVA and the CVA are robust to violations of the assumption of homoscedasticity (Marcus, 1990; Hair et al., 1998). Furthermore, the analyses of size and shape variation one species at a time led to results consistent with those obtained for the entire sample.

The patterns of shape variation related to mandibular size were compared across species with a multivariate regression of the shape variables onto log-transformed CS (Rohlf et al., 1996). The CS was log-transformed because the allometric relationships in marmot mandibles are better described by a model that takes into account the progressive decrease of the rate of shape change during growth (Cardini and Tongiorgi, in press; Cardini and O'Higgins, unpubl.), and log-transformed CS led to a slightly larger proportion of shape variance explained by size variation. A test for common slopes was performed to assess whether the regression slope was the same for all the species or whether at least two groups differed in slope (Rohlf, 1998b).

Cluster analysis and ordination techniques were employed for reconstructing marmot mandible phenetic relationships. Both these procedures were applied to the matrix of Procrustes distances among the mean shapes of each species. The Procrustes distances express the morphological relationships among the species computed directly in the shape space and avoid the problem of using Mahalanobis distances when sample sizes are unequal and unlikely to reflect population structures. The cophenetic correlation coefficient ( $r_{cp}$ ) was used to evaluate the efficiency of different clustering algorithms. The co-

TABLE 2. ANOVA of sex  $\times$  species for the mandible centroid size in *Marmota* (excluding *M. broweri*).

| Effect               | Sum of squares | df  | F      | P                     |
|----------------------|----------------|-----|--------|-----------------------|
| Sex                  | 28968.9        | 1   | 20.282 | $9.68 \times 10^{-6}$ |
| Species              | 74090.6        | 12  | 51.872 | 0 <sup>a</sup>        |
| Sex $\times$ species | 1462.8         | 12  | 1.024  | 0.426                 |
| Error                | 1428.3         | 291 |        |                       |

<sup>a</sup>  $P$  values smaller than the minimum value that can be displayed by SPSS.

efficient  $r_{cp}$  measures the correlation between the original distance matrix and the cophenetic distance matrix, which mirrors the distances between all pair of species on the basis of the dendrogram topology (Rohlf, 1970, 1997; Fabbris, 1997). The UPGMA algorithm had the highest  $r_{cp}$ . Nonmetric multidimensional scaling (MDS) was applied to the mean shapes Procrustes distance matrix using the first three relative warps as the initial configuration (Rohlf, 1997; Hair et al., 1998). The MDS should preserve smaller interpoint distances better than does principal component analysis (Rohlf, 1997) and thus might help to elucidate relationships among the most similar species.

The computer programs SPSS 9.0.1 (1999, SPSS, Chicago, IL), Statistica 4.5 (1993, StatSoft, Tulsa, OK), NTSYS-pc 2.01d (Rohlf, 1997), and TpsRegr 1.20 (Rohlf, 1998b) were used for the statistical analyses.

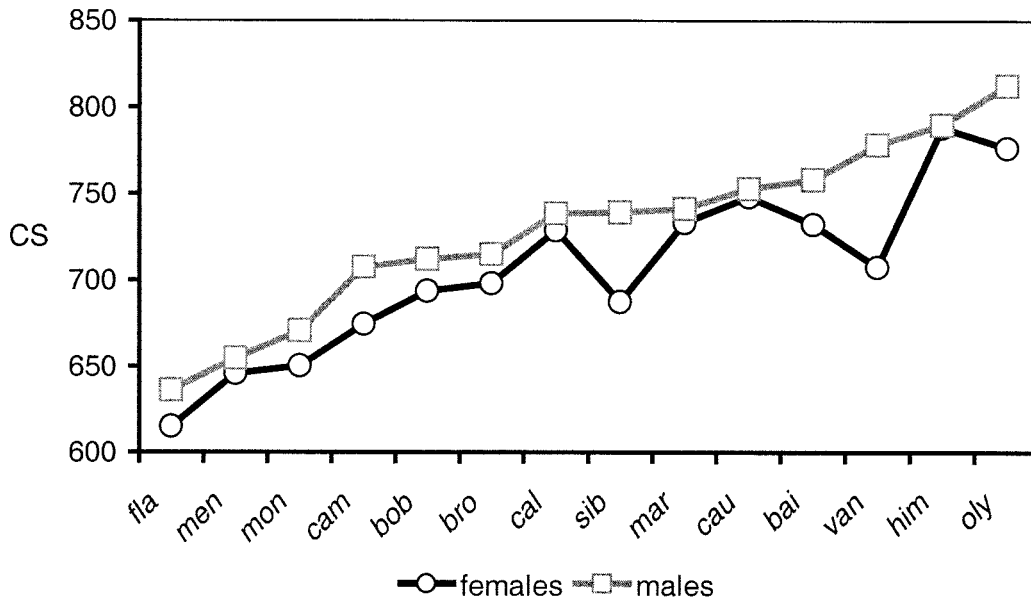
## RESULTS

### ANOVAs and CVA

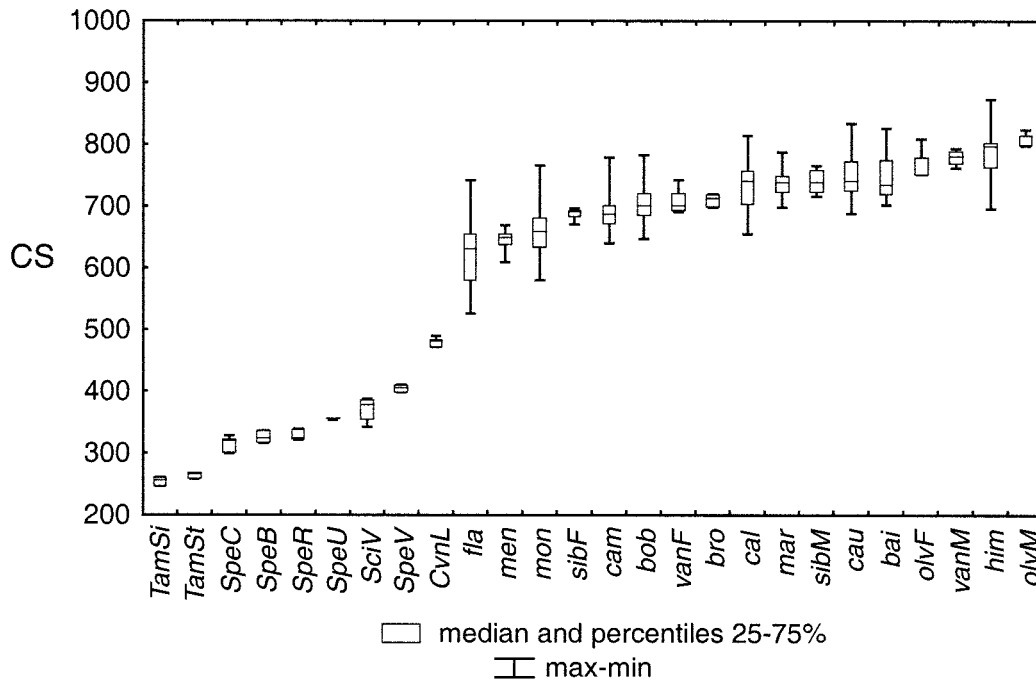
The linear tangent space closely approximates the shape space (TpsSmall 1.14; Rohlf, 1998d). The ANOVA sex  $\times$  species for the CS demonstrated that species differences are highly significant (Table 2), that male marmots are larger on average than females (Fig. 4a), and that interaction between sex and species is not appreciable. Sexual dimorphism of mandibular size was particularly remarkable in *M. olympus*, *M. sibirica*, and *M. vancouverensis* (Fig. 4a). In Figure 4b, the CS variation for each species, including the outgroup, is shown with a box-plot.

Either body mass at the beginning of hibernation or body length, as reported by Armitage (1999), were highly correlated with mandible size ( $R^2 = 0.53$  in both the linear regressions), but body mass turned out to be a better predictor of mandible size ( $R^2 = 0.70$ ) after excluding *M. caudata*, which has an atypically low mass for its body length.

As with size, mandibular shape differed significantly between sexes and across species, but the interaction between these two effects was negligible (the results of the sex  $\times$  species MANOVA for the matrix of shape variables are displayed in Table 3). When the MANOVA was performed after excluding *M. caligata*, *M. sibirica*, and *M. vancouverensis*, shape sexual dimorphism also became negligible ( $P > 0.05$ ). *Marmota sibirica* and *M. vancouverensis* have the largest mandibular



(a)



(b)

FIGURE 4. (a) Average centroid size (CS) for males and females (CS is measured in pixels at a scale factor of 0.106 mm/pixel). Marmot species names are abbreviated with the first three letters of their specific epithets. (b) Box-plot of CS for marmot and outgroup species (abbreviated with the first three letter of the genus plus the initial of the specific epithet) with separated samples for males (M) and females (F) of *M. olympus*, *M. sibirica*, and *M. vancouverensis*, which show the largest sexual dimorphism for size.



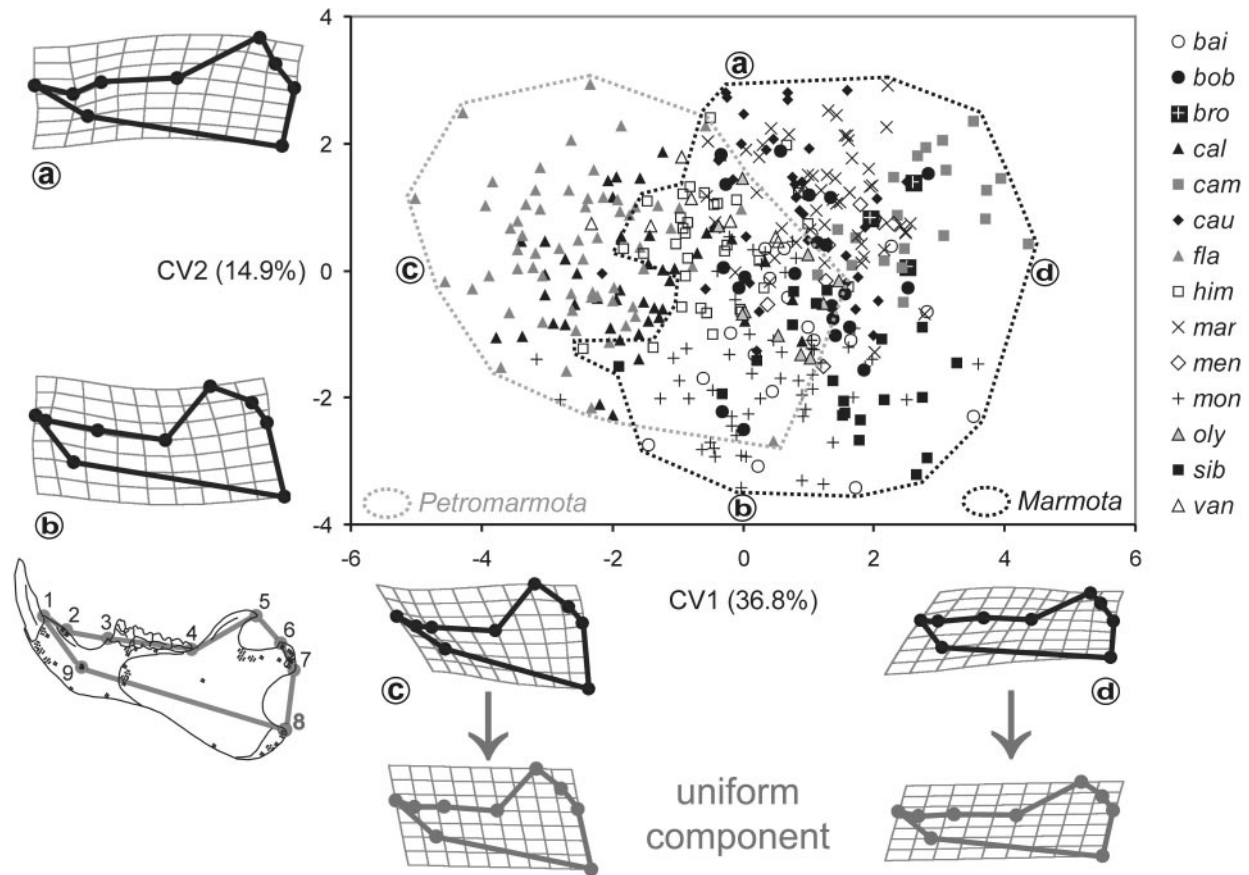


FIGURE 5. Ordination of the 14 marmot species in the space of the first two canonical axes (CV1, and CV2) based on the matrix of shape variables. The TPS deformation grids depicting the shape changes at the extremes of both the CV axes (CV2: a, b; CV1: c, d) are shown (for CV1, either deformation grids using both components of shape change or only the uniform component are displayed). The mandibles in the deformation grids are stylized representations obtained by linking pairs of landmarks (lower left).

cytochrome *b* gene tree proposed by Steppan et al. (1999). The diploid chromosome number (Kruckenhauser et al., 1999) is indicated by the dendrogram branches. The mandibular dendrogram of Figure 6 includes the out-group, whereas in Figure 7 the same tree is shown for marmots only. The TPS deformation grids describe the mandibular shape of each species compared with the mean of the genus *Marmota*; lines proportional to mean mandible size are displayed by species to help detect size-related convergence. The mandibles drawn in Figure 7 above the CS lines correspond to specimens closest to the mean of the respective marmot species, and hence they are the real specimens that most closely resemble the mean mandible of their species. In Table 5, the main mandibular clusters were related to ecological variables (habitat, age of dispersion/first reproduction, social system) to investigate possible convergent patterns.

The congruence between molecular and morphological information is very low when marmot terminal branches are compared. However, the mandible morphology supported the mainly Palaearctic subgenus *Marmota*, typically composed of species with 38 chromosomes. A puzzling exception is *M. (Petromarmota) olyn-*

*pus*, whose mandible curiously resembles those of members of the subgenus *Marmota* instead of being similar to those of other *Petromarmota* species. The majority of Eurasian marmots belong to the same cluster (black-capped marmot group; Fig. 7, cluster 2), and only *M. sibirica* and *M. baibacina*, whose mandibles are almost identical, are grouped in another cluster (woodchuck group; Fig. 7, cluster 1), which also includes the North American woodchuck (*M. monax*). *Marmota olympus* seems relatively close to the marmots of this second cluster, but this apparent similarity was not confirmed by ordination techniques. The main mandibular traits shared by the woodchuck group are the posteriorly elongated angular process and the coronoid process bent towards the toothrow. All other Eurasian species (Fig. 7, cluster 2) are characterized by a contraction of the ascending ramus with coronoid and angular processes getting closer. The Alaskan marmot (*M. broweri*) does not belong to either of the two main clusters in the subgenus *Marmota*. The peculiar shape of the *M. broweri* mandible, dorsoventrally stretched with a remarkable uplift of the toothrow, may be related to its presumably basal position in the subgenus *Marmota* (Fig. 6) and its unique karyotype ( $2n = 36$ ).



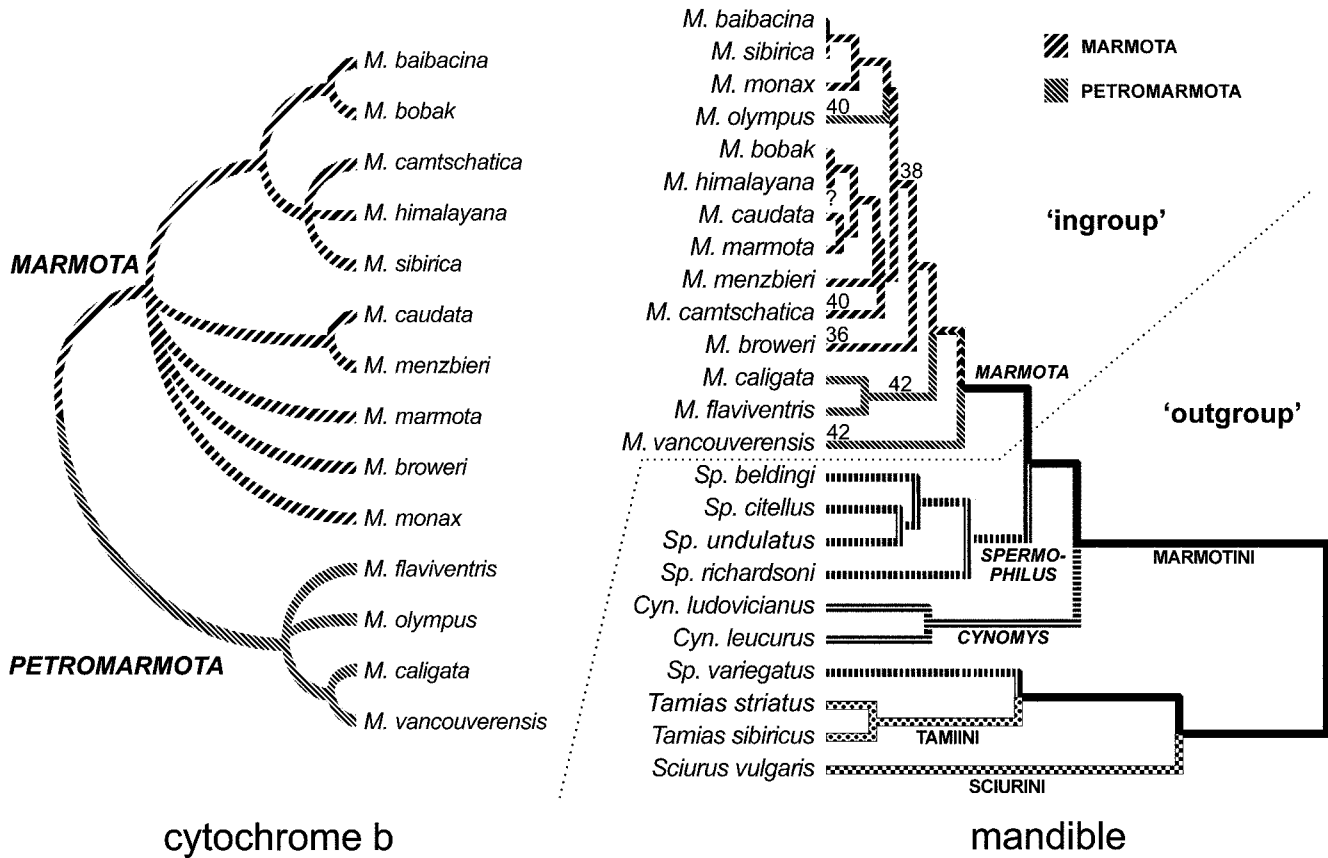


FIGURE 6. Cytochrome *b* gene tree (modified from Steppan et al., 1999; fig. 6) and UPGMA dendrogram for the mean mandibles of the marmot and outgroup species. The marmot diploid chromosome number is written at the root of a cluster or by a terminal branch. The karyotype of the Himalayan marmot is unknown.

*Marmota caligata* and *M. flaviventris* can be considered the two most important species of the subgenus *Petromarmota* because of their wide distribution (Fig. 2) and large populations; each of these species has been subdivided into several subspecies. Nonetheless, their mandibles are strikingly similar and markedly distinct from those of all other marmot species. The mental foramen is further backward, and the angular process is elongated (posteriorly displaced) and enlarged (downward expansion), and the coronoid process is shifted forward. The ventral portion of the Olympic marmot mandible (mental foramen and angular process) closely resembles those of *M. caligata* and *M. flaviventris*, but the differences in the dorsal region distinguish *M. olympus* from the typical *Petromarmota*.

The most singular marmot mandible, with quite unusual morphology of the processes, belongs to *M. vancouverensis*. In spite of its genetic similarity to the hoary marmot (*M. caligata*), the Vancouver Island marmot is morphologically distant either from *Petromarmota* or *Marmota*.

Clusters based on mandible shape correspond to main sciurid genera and tribes. The only exception is the large rock squirrel (*Spermophilus variegatus*), which is relatively and surprisingly similar to the tiny chipmunks

(tribe Tamiini). Although the mandibles of *Spermophilus* and *Cynomys* do not differ much from those of *Marmota* species, those of the chipmunks and the common tree squirrel have markedly distinct shapes: Both are characterized by a short angular process and elongated coronoid and condylar processes, but the horizontal ramus is thin in the chipmunks and thick (dorsoventrally stretched) in the tree squirrel.

The lines drawn beside the marmot species names in the dendrogram of Figure 7 represent magnified mandibular size. There is no evidence of shape clusters reflecting mandibular size; the same holds for the outgroup.

Using MDS, the phenetic relationships among marmot mandibles were displayed in a three-dimensional space constructed to approximate the shape space. A four-dimensional final configuration was chosen in MDS (stress = 0.0490). Because four-dimensional spaces cannot be graphically represented and to align the MDS axes with the major axes of variation, a principal components analysis was performed on the results of the MDS, and the first three principal components (93.8% of the variation described by the four MDS axes) are plotted in Figure 8. The diagram complements the information summarized by the cluster analysis and is congruent

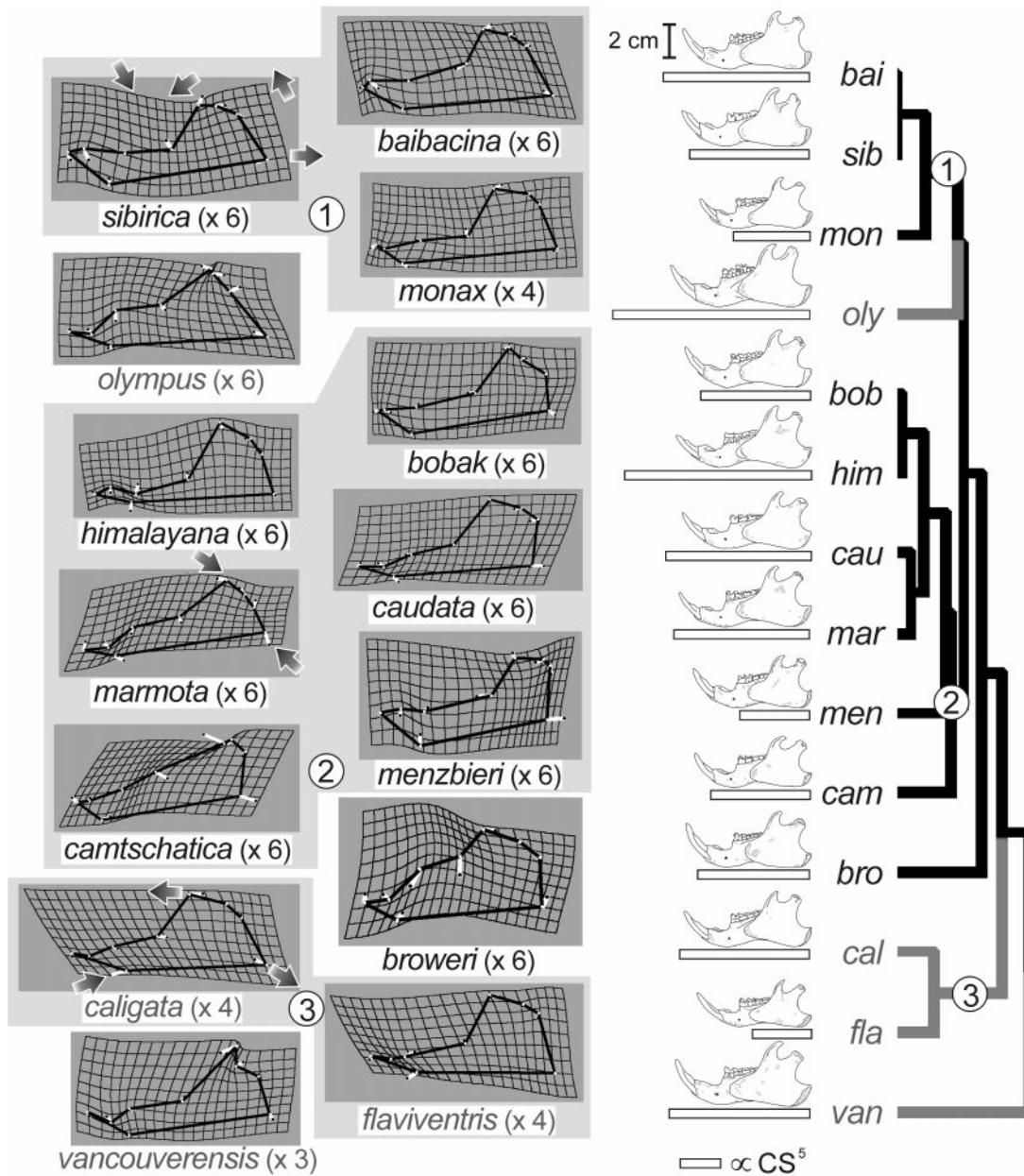


FIGURE 7. UPGMA dendrogram and magnified TPS deformation grids for the marmot mean mandibles (magnification factor in parentheses). The displacement vectors from the mean shape of the genus *Marmota* to that of a marmot species are shown (white lines) and the arrows (shaded) locate the main common shape features for three clusters: 1) woodchuck group, 2) black-capped marmot group, and 3) typical *Petromarmota* species. Lines proportional to the average mandible size for each species were traced next to the species name abbreviations in the mandibular dendrogram (first three letters of the specific epithet). The mandible drawings correspond to the specimens closest to the mean shape of their species.

with the mandibular dendrogram (rearranged in Fig. 8 for facilitating the comparison). The Vancouver Island marmot is isolated from all other marmots, and *M. caligata* and *M. flaviventris* are far from the cloud formed by the subgenus *Marmota* (plus *M. olympus*) but close to each other. The Alaskan marmot mandible is confirmed as the most peculiar one in the subgenus *Marmota*. On the contrary, *M. olympus*, although closer to *Marmota* than to *Petromarmota*, seems no more similar to the wood-

chuck group. The Olympic marmot is apparently near *M. himalayana*, with which it contends the primacy for the largest mandible, but its individuality is clearly recognizable along the vertical axis. A second difference between the diagram and the dendrogram is the similarity between *M. caudata*, the long-tailed marmot, and *M. menzbieri*, which is suggested by the MDS plot but not by the dendrogram and is congruent with both the *cyt b* cladogram (Fig. 6) and the geographic distribution (Fig. 2).

TABLE 5. Main *Marmota* mandibular clusters and ecological variables.

| Species                  | Main cluster <sup>a</sup> | Habitat <sup>b</sup>             | Age at dispersion (years) <sup>c</sup> | Age at first reproduction (years) <sup>c</sup> | Social system <sup>d</sup> |
|--------------------------|---------------------------|----------------------------------|--|--|----------------------------|
| <i>M. baibacina</i>      | 1                         | HM, low mountains                | ≥3                                     | 2–4  | EF                         |
| <i>M. sibirica</i>       | 1                         | HM, permafrost, xeric habitat    | ≥3                                     | 2  | EF                         |
| <i>M. monax</i>          | 1                         | Plain meadows, forest            | 0                                      | 1  | Solitary                   |
| <i>M. olympus</i>        | oly                       | HM                               | 2                                      | 3  | Restricted family          |
| <i>M. bobak</i>          | 2                         | Steppe                           | ≥3                                     | 3  | EF                         |
| <i>M. camtschatica</i>   | 2                         | HM, permafrost                   | ≥3                                     | 3  | EF                         |
| <i>M. caudata</i>        | 2                         | HM                               | ≥3                                     | 3  | EF                         |
| <i>M. himalayana</i>     | 2                         | HM, xeric steppe                 | ?                                      | ?  | EF                         |
| <i>M. marmota</i>        | 2                         | HM                               | 2–3                                    | 2–3  | EF                         |
| <i>M. menzbieri</i>      | 2                         | HM                               | ?                                      | 3–4  | EF                         |
| <i>M. broweri</i>        | bro                       | HM, permafrost                   | ≥3                                     |  | EF                         |
| <i>M. caligata</i>       | 3                         | HM, xeric habitat                | 2                                      | 3  | Restricted family          |
| <i>M. flaviventris</i>   | 3                         | HM, low mountains, xeric habitat | 1                                      | 2  | Female kin group           |
| <i>M. vancouverensis</i> | van                       | HM                               | 2                                      | 3  | Restricted family          |

<sup>a</sup>Indicated as in Figure 6.

<sup>b</sup>HM = high mountain meadows; variations from this typical marmot habitat are indicated with no abbreviation (Barash, 1989; Armitage, 2000).

<sup>c</sup>Blumstein and Armitage, 1998, 1999; Armitage, 1999, 2000; Rymalov, pers. com.

<sup>d</sup>EF = extended family (Armitage, 2000).

## DISCUSSION

### Sexual Dimorphism

Male mandibles are larger than those of females in all marmot species. This dimorphism mirrors similar

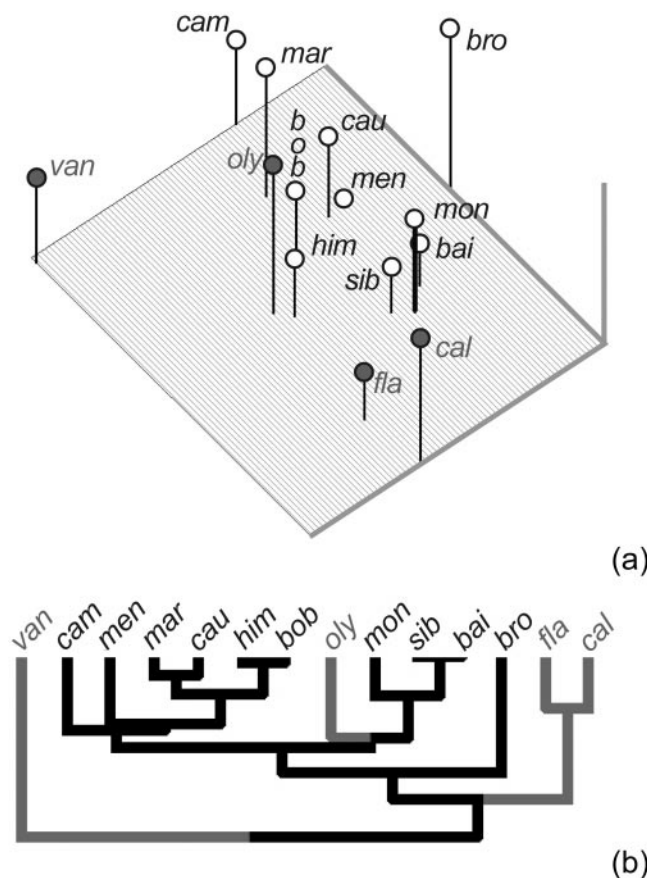


FIGURE 8. Ordination (MDS) of the mean marmot mandibles (a) compared with the dendrogram (tree topology rearranged to emphasize congruencies) (b).

observations on body size (Barash, 1989) and is related to sexual selection. In contrast, sexual dimorphism for mandible shape is modest and negligible if compared with interspecific differences. These findings are in agreement with observations of the yellow-bellied marmot (*M. flaviventris*) (Cardini and Tongiorgi, in press). The CVA indicated that mandible shape differences between sexes are conspicuous only in *M. caligata* and *M. sibirica*. A moderate degree of sexual dimorphism also may be present in mandible shape of *M. vancouverensis*, but it was difficult to detect because of small sample size. Sexual dimorphism is not significant in the sex × species MANOVA of shape variables only when the *M. vancouverensis*, *M. caligata*, and *M. sibirica* are excluded from the analysis. Sexual dimorphism in the hoary marmot and the Vancouver Island marmot is, nevertheless, negligible compared with interspecific differences. A cluster analysis (not shown) of mean mandibles performed with separate means for sexes showed dendrogram topology almost unchanged, and average shapes for males and females of each species grouped together. An exception is represented by *M. sibirica*, which clusters with *M. baibacina*; males of *M. baibacina* are more similar to females of *M. sibirica* than to their conspecific females. Because this is the only exception, the analysis was performed with common samples for males and females. Because some specimens were of unknown sex, this approach also increased sample sizes.

### Allometry

Interspecific allometry in *Marmota* is either negligible or follows complex nonlinear models. The test for common slopes was highly significant and only a small fraction of the shape variation in the marmot sample was explained by size, even when mean shapes for each marmot species were regressed onto the average mandibular size (7.5% of shape variation explained by size). However, when the outgroup specimens were included, a

larger percentage of shape differences was size related (12.3% including all specimens or 38.5% using averages for each species). This increase may be partly due to marmots being much larger than other sciurids, which results in two relatively separated clouds of points representing ingroup and outgroup specimens.

Ontogenetic allometry is an important factor in modeling yellow-bellied marmot mandibles during postnatal growth (Cardini and Tongiorgi, in press), and the same is likely to hold for the majority of marmot species (Cardini and O'Higgins, unpubl.). Allometry also may have played a significant role in shaping the mandible during sciurid evolution, but new studies involving more species, employing nonlinear models, and possibly taking into account the effects of taxonomic hierarchy in the statistical tests will be needed (Felsenstein, 1985; Harvey and Pagel, 1991).

#### INTERSPECIFIC COMPARISONS: CONVERGENCE VERSUS PHYLOGENETIC SIGNAL

##### Size

Marmot mandibles are much larger than those of the outgroup species, which is congruent with marmots being the largest living sciurids (Hafner, 1984). The size of marmot mandibles reflects fairly well their body size and cranial dimensions (Bibikov, 1996; Armitage, 1999). Comparisons of mandible size with body size (length and mass) and condylobasal length in *Marmota* are not simple, because the data reported by different authors are not fully concordant. Very large species, such as *M. himalayana* and *M. olympus*, and very small ones, such as *M. flaviventris* and *M. menzbieri*, have respectively the largest and smallest mandibles. However, the small mandible of *M. monax* is in agreement with Bibikov's (1996) observations of the woodchuck as one of the smallest marmots, but it is not in agreement with the observations of Armitage (1999), who considered it to be intermediate in size. Beyond these inconsistencies, only two major discrepancies between body and mandible measurements are evident. Despite the fact that *M. bobak* is among the largest species, its mandibles are of intermediate size. The opposite holds for *M. broweri*, which is a little species according to Bibikov (1996) and Hoffmann et al. (1979), but it does not have particularly small mandibles, at least in the three specimens available for the present study.

##### Morphological Convergence Hypothesis

Mandible size and shape are unlikely to be strongly related to dietary differences. All marmots are generalist herbivores, and their diets, consisting primarily of dicots and grasses, are relatively similar (Armitage, 2000). The relationship between mandible size and shape in the genus *Marmota* seems very weak. Interspecific allometries are negligible, and size does not produce convergent shapes. No clusters clearly reflecting size similarities were found in the mandibular dendrogram (Fig. 7).

The outgroup supports the lack of size-related convergence in the mandible. The small chipmunks clustered with the large rock squirrel and the large marmots clustered with the smaller ground squirrels and not with the intermediate-size prairie dogs. Roth's hypothesis (1996) that the sciurid skull is inclined to convergence and the observation that clusters based on sciurid skeletal characters often reflect size (Hafner, 1984; Roth, 1996; Velhagen and Roth, 1997) do not hold for the Marmotini mandible. Hafner (1984) suggested that ecological similarities also may play an important role in shaping the sciurid skeleton, but a preliminary analysis of marmot habitats, life-history traits (age at dispersion/first reproduction), and social systems did not show evident convergent patterns in mandible shape (Table 5). Thus, the hypothesis of sciurid skeletal convergence is rejected in the case of the Marmotini mandible size and shape. The occurrence of convergent morphology due to ecological similarities is not evident but needs to be tested using more detailed ecological information.

##### Phylogenetic Signal in Mandible Shape

If the mandible is not a convergent structure in marmots and the other sciurids in the sample, does this bone contain a phylogenetic signal detectable with geometric morphometric techniques? Analysis of the marmot mandible produces phenetic groups that match the main sciurid genera and tribes, even if these mandibles were deliberately sampled from geographically distant populations to increase the intrageneric variability. Only the rock squirrel (*Spermophilus variegatus*) clusters far from its congeneric relatives, possibly reflecting the ancient evolutionary history of the subgenus *Otospermophilus* (Hoffmann, pers. com.). Compared to Hafner's (1984) morphometric analysis of the sciurid skeleton, where ground squirrels are interspersed in different sciurid tribes, the mandible efficacy in discriminating sciurid taxonomic groups is surprising. A more problematic issue is whether the relationships among genera and tribes shown in the mandibular clusters match phylogeny. The moderate resemblance between chipmunks and the common tree squirrel is unlikely to reflect phylogeny because the Tamiini are traditionally regarded as relatives of the Marmotini (Hoffmann et al., 1993), a position supported by genetic analyses (Hafner, 1984; Roth, pers. com.). The relative position of the Marmotini genera is more difficult to interpret in the absence of a consolidated phylogeny for this tribe. However, marmot mandibles are fairly similar to those of *Spermophilus*, and this finding might be consistent with Thomas and Martin's (1993) hypothesis of a recent divergence of marmots from true ground squirrels.

The most evident and interesting outcome in the mandible analysis of the genus *Marmota* is the corroboration given to the recently proposed marmot subgenera (Steppan et al., 1999). The support is weaker for the subgenus *Petromarmota*, because the Olympic marmot mandible more closely resembles those of members of the subgenus *Marmota*, and the Vancouver Island

marmot is isolated from all other species by its peculiar mandibular shape. Nonetheless, the hoary marmot and the yellow-bellied marmot, both of which occupy almost all of the Rocky Mountains and comprise several subspecies each, share many mandibular traits and are clearly separated from representatives of the subgenus *Marmota*. The CVA (Fig. 5) indicates that *Petromarmota* (excluding the Olympic marmot) and *Marmota* can be discriminated fairly well along the first canonical axis, which mainly corresponds to uniform shape changes. The uniform shape differences between the two subgenera are similar to the uniform dorsoventral stretching and longitudinal compression that occur during marmot postnatal growth (Cardini and Tongiorgi, in press; Cardini and O'Higgins, unpubl.). The usefulness of the uniform component for providing characters that separate *Petromarmota* and *Marmota* is corroborated by the relative warp analysis (RWA) of the mean mandibles (not shown). When the uniform component is included in the analysis, the species belonging to *Petromarmota* are easily recognizable for having the lowest values along the second relative warp (RW1 and RW2 explain 33.7% and 19.2%, respectively, of the shape variation). However, if an RWA is performed on the matrix of the partial warps alone, marmot subgenera are no more separated along the first two RWA axes (31.3% and 23.6%, respectively, of the variance).

*Marmota vancouverensis* and *M. olympus* mandibles do not resemble those of the typical *Petromarmota* species. Both of these atypical *Petromarmota* species survive with small populations in extremely restricted ranges (Fig. 2), and they are considered relict populations that differentiated in isolation during the Pleistocene (Hoffmann et al., 1979; Steppan et al., 1999). In this respect, the Vancouver Island marmot is of great interest. *Marmota vancouverensis* is believed to have originated between 100,000 and 10,000 years ago from a population that colonized the Vancouver Island via land bridges present during the glaciations (Bryant, 1997). Marmots survived glacial maxima on Vancouver Island nunataks or coastal refugia. The available evidence on *M. vancouverensis* genotype (karyotype and *cyt b*) points to a close relationship with *M. caligata* (Hoffmann et al., 1979; Kruckenhauser et al., 1999; Steppan et al., 1999). Steppan et al. (1999) showed that the similarity between the two species is so high that their *cyt b* interspecific distance overlaps the range of values found in the intraspecific comparisons. Despite the apparent low level of genetic divergence and the young age of the Vancouver Island marmot, its melanistic fur and characteristic vocalizations and behavior (Barash, 1989) make this species unique among all marmots. Hoffmann et al. (1979) observed some peculiarities of the Vancouver Island marmot skull and lower jaw but found it to be relatively similar to the hoary marmot. Hence, they considered *M. caligata*, *M. olympus*, and *M. vancouverensis* as members of the super-species *caligata*. In the present analysis, the Vancouver Island marmot mandible, with its recurved coronoid process (already noted by Hoffmann et al., 1979), forward

bent condyle apex (landmark 6), and inconspicuous mandibular symphysis ridge (landmark 2), emerges as the most atypical of the entire genus. Genetic bottlenecks during the short evolutionary history of the Vancouver Island marmot may have acted as powerful accelerators of the rate of morphological and behavioral evolution, which led to unique phenotypic features in this isolated population.

The Olympic Peninsula is similar to Vancouver Island with respect to geography and Pleistocene history, but marmots endemic to these two regions evolved differently. The Olympic marmot is a basal member of *Petromarmota*, which originated in an early to mid-Pleistocene nunatak (Steppan et al., 1999). The pronounced genetic divergence of *M. olympus* is suggested not only by the *cyt b* sequences (Steppan et al., 1999) but also by its karyotype of 40 chromosomes instead of the 42 found in the other *Petromarmota* species. Interpreting the anatomical traits that make the Olympic marmot mandible more similar to those of members of the subgenus *Marmota* is a difficult task. The lower jaw of *M. olympus* bears some resemblance to those of the typical *Petromarmota* in the ventral part of the mandible. However, the posteriorly bent coronoid process and the remarkable uplift of the tooththrow make the Olympic marmot manifestly different from its closest relatives. These mandibular characters may be a by-product of *M. olympus* evolution as a peripheral isolate or they could represent plesiomorphic traits, present in the ancestor of all living marmots and partially conserved either in the Olympic marmot or in members of the subgenus *Marmota*. In fact, the *M. olympus* mandible displays a mosaic of characters: the ventral half resembles the typical *Petromarmota* mandible, the relatively long angular process is found also in the woodchuck group, and the posteriorly inclined coronoid process is also seen in the black-capped marmot group.

The subgenus *Marmota* includes two main mandibular clusters plus *M. broweri*. The Alaskan marmot is the most peculiar species for mandible shape in this subgenus and is the only species with 36 chromosomes (all others have 38 except *M. camtschatika*, with 40). Steppan et al. (1999) pointed out that the Alaskan marmot might represent an ancient lineage that originated at the same time as the radiation of the Palaearctic marmots. A strict relationship with *M. camtschatika* or *M. caligata* is rejected by the *cyt b* sequence data. The mandibular morphology is consistent with this view, and perhaps the uplift of the tooththrow in the Alaskan marmot represents a primitive mandibular trait apparent, also although less pronounced, in the Olympic and Alpine marmots.

The species belonging to either the woodchuck group or the black-capped marmot group display subtle differences in mandible shape. The majority of these marmots, the black-capped marmot group, are characterized by a relative displacement of the angular and coronoid process, a contraction opposite to the enlargement found in the typical *Petromarmota*. The morphological divergence produced by the radiation of the Eurasiatic marmots is relatively modest. The North American woodchuck's

close phenetic relationship to *M. baibacina* and *M. sibirica* is unlikely to be of phylogenetic significance, but the mandible supports *M. monax* proximity to Eurasiatic marmots. In the black-capped marmot group, the Alpine marmot mandible does not show highly specific traits despite its presumed ancient origin and the uniqueness of this species among the Palaearctic species in fur morphology and its parasitic relationship with fleas. *Marmota caudata* clusters with the Alpine marmot in the dendrogram but is next to *M. menzbieri* in the ordination, a close relationship that reflects the cyt *b* tree and the geographic proximity of the long-tailed and Menzbier marmots.

The lack of correspondence between the dendrogram and cyt *b* tree terminal branches may be due to several factors: (1) sampling error (either in the collection of specimens or in the choice of landmark configuration), (2) the retention of plesiomorphic mandibular traits, which can obscure the interspecific differences and make the detection of the phylogenetic signal more difficult (which may be the case for the strong resemblance of the woodchuck to *M. baibacina* and *M. sibirica*), (3) genetic drift and morphological convergence in the past evolutionary history of *Marmota*, which could have masked the mandible phylogenetic signal, and (4) misrepresentation of true marmot phylogeny by the cyt *b* gene tree. For example, *M. baibacina* and *M. sibirica* could be more closely related. Their mandibles are almost indistinguishable. The main differences between these species are the larger size of *M. baibacina* and the more pronounced sexual dimorphism of *M. sibirica*; subtler shape differences are localized at the base of the coronoid process and at the anterior tip of the incisor alveolus. *Marmota baibacina* and *M. sibirica* are very similar also in external morphology, and hybridization may occur in the contact area between the two species (as discussed by Barash, 1989; Steppan et al., 1999). This observation could indicate a close phylogenetic relationship between *M. baibacina* and *M. sibirica* that would be consistent with their mandibular similarities. However, Potapova et al. (1997) found significant cranial differences in a morphometric comparison of these two species, and hybridization has also been reported between *M. baibacina* and *M. bobak* (Steppan et al., 1999). The study of *M. baibacina* skeletal morphology is further complicated by the variation of mandible phenotypic frequency determined by plague epidemics (Pole and Bibikov, 1991, cited by Armitage, 2000). Given the complex morphological patterns and the limited molecular data for the Eurasiatic marmots, an extensive analysis of morphological and molecular characters sampling the entire distribution range will be needed to assess fully the phylogenetic relationships in this clade.

#### *Morphological Patterns*

The role of allometry in producing morphological novelties during marmot evolution seems negligible, while its possible relevance in sciurid radiation should be investigated further. Each marmot species has its anatomical peculiarities, and although a distinction can be found

between mandibles of the two marmot subgenera, morphological traits may be mixed. The mandible could have evolved as a mosaic of characters. The complexity of the morphological patterns can also be related to genetic drift greatly speeding the rate of morphological evolution as a result of severe bottlenecks, as described for the Vancouver Island marmot.

Swiderski (1993) and Swiderski and Jansa (1998), applying geometric morphometrics techniques, found that sciurid skeletal characters do not behave as highly integrated structures nor are they prone to convergence. As in the present study, these authors mainly focused on marmotines. Different outcomes were obtained by Hafner (1984), Roth (1996), and Velhagen and Roth (1997), who considered the sciurid skeleton inclined to convergent evolution. The partially conflicting views on the usefulness of sciurid skull morphology in phylogenetic research and on the role of size and ecological specialization in determining squirrel cranial shape, may have several sources, among these are the choice of morphometric technique and the selection of species studied. Roth (1996) and Velhagen and Roth (1997) focused on tree squirrels, and Hafner (1984) mainly analyzed terrestrial squirrels, but none of these researchers used geometric morphometrics techniques, which may be more effective in capturing the phylogenetic signal in marmotine morphology. The results obtained from the mandible should be tested with other skeletal characters. Extensive investigations of tree and flying squirrel skeletal morphology are needed to assess whether convergent osteological patterns characterize other sciurid lineages.

#### CONCLUSIONS

A phylogenetic signal at intermediate taxonomic levels is detectable in the marmot mandible. Mandible shape clearly discriminates the genera and tribes and supports the recently proposed subgeneric classification of marmots. This outcome also implies that the high degrees of sociality found in several marmot species evolved independently at least twice (Kruckenhauser et al., 1999).

The hypothesis of sciurid propensity to morphological convergence caused by size similarities is rejected for marmots.

Interspecific allometry has not played an important role in shaping the mandible during the evolution of marmots. Genetic drift can greatly accelerate morphological evolution and may have contributed to the origin of morphological novelties in marmot skeletal structures. The mandible is likely to have evolved as a mosaic of characters mixing plesiomorphies with derived traits.

#### ACKNOWLEDGMENTS

This report is dedicated to the memory of L. F. Marcus (American Museum of Natural History, New York) and Ivan Rymalov (Russian Academy of Science, Moscow). I am indebted to many people who greatly helped me in this work with their assistance, advice, and friendship. My neverending gratitude goes to my family for supporting me in this work and to my friend F. Daverio for his hospitality during my stay in London for data collection. Special thanks go to P. Tongiorgi (University of Modena and Reggio

Emilia), M. Corti (University of Roma La Sapienza), K. B. Armitage (University of Kansas, Lawrence), L. Spezia (Museo di Storia Naturale di Milano), Vittorio Parisi (University of Parma), and Marco Ferraguti (University of Milano). I am deeply grateful to F. J. Rohlf (State University of New York), Stony Brook) and R. S. Hoffmann and R. W. Thorington, Jr. (National Museum of Natural History (Washington, DC) for reviewing the manuscript. My gratitude also goes to D. Slice (University of Vienna and Wake Forest University School of Medicine), J. Kim (University of Pennsylvania), and an anonymous referee for their helpful comments on the manuscript. Many other colleagues and friends contributed to my work: G. Pacchetti (University of Milano), I. Rymalov (Russian Academy of Science, Moscow), I. Ya. Pavlinov (Zoological Museum, Moscow), R. A. Reymont (University of Uppsala), L. Sala (University of Modena and Reggio Emilia), H. Seidler and K. Schaefer (University of Vienna), L. F. Marcus (American Museum of Natural History, New York), P. Jenkins and the mammal section staff of the British Museum of Natural History (London), L. Gordon and the other mammal curators of the National Museum of Natural History (Washington, DC), B. Stein (Museum of Vertebrate Zoology, University of California, Berkeley), M. Podestà (Museo Civico di Storia Naturale, Milano), A. O. Averianov, G. I. Baranova, K. Tsytulina, and the other very friendly colleagues of the Zoological Institutes of the Russian Academy of Sciences (St. Petersburg), and Dino Scaravelli (formerly of the Museo di Storia Naturale, Cesena). Special thanks to L. Gaudenzio for providing me with the beautiful marmot pictures. This work was supported by grants from Italian Ministero dell'Università e della Ricerca Scientifica e Tecnologica (60% funds).

#### REFERENCES

- ARMITAGE, K. B. 1981. Sociality as a life history tactic of ground squirrels. *Oecologia* 48:36–49.
- ARMITAGE, K. B. 1999. Evolution of sociality in marmots. *J. Mammal.* 80:1–10.
- ARMITAGE, K. B. 2000. The evolution, ecology, and systematics of marmots. *Oecol. Mont.* 9:1–18.
- ASTUA DE MORALES, D., E. HINGST-ZAHER, L. F. MARCUS, AND R. CERQUEIRA. 2000. A geometric morphometric analysis of cranial and mandibular shape changes in the skull of *Calomys expulsus*. *Hystrix* 11:115–130.
- ATCHLEY, W. R., D. E. COWLEY, C. VOGL, AND T. MCLELLAN. 1992. Evolutionary divergence, shape change, and genetic correlation structure in the rodent mandible. *Syst. Biol.* 41:196–221.
- BALL, S. S., AND V. L. ROTH. 1995. Jaw muscles of New World squirrels. *J. Morphol.* 224:265–291.
- BARASH, D. P. 1974. The evolution of marmot society: A general theory. *Science* 185:415–420.
- BARASH, D. P. 1989. Marmots. Social behavior and ecology. Stanford Univ. Press, Palo Alto, California.
- BIBIKOV, D. I. 1996. Die murmeliere der welt. Westarp Wissenschaften, Spectrum Akademischer Verlag, Magdeburg, Germany.
- BLUMSTEIN, D. T., AND K. B. ARMITAGE. 1998. Life history consequences of social complexity: A comparative study of ground-dwelling sciurids. *Behav. Ecol.* 9:8–19.
- BLUMSTEIN, D. T., AND K. B. ARMITAGE. 1999. Cooperative breeding in marmots. *Oikos* 84:369–382.
- BOOKSTEIN, F. L. 1991. Morphometric tools for landmark data. Cambridge Univ. Press, Cambridge, U.K.
- BOOKSTEIN, F. L. 1996. Combining the tools of geometric morphometrics. Pages 131–151 in *Advances in morphometrics* (L. F. Marcus, M. Corti, A. Loy, G. J. P. Naylor, and D. E. Slice, eds.). Plenum, New York.
- BOOKSTEIN, F. L. 2000. Morphometrics. In *Encyclopedia of life sciences*. Macmillan. Online at <http://www.els.net>.
- BRYANT, A. A. 1997. United States report on species at risk in Canada: Vancouver Island marmot, *Marmota vancouverensis*. Committee on the Status of Endangered Wildlife in Canada, COSEWIC, Ottawa, Canada.
- CARDINI, A., AND P. TONGIORGI. In press. Yellow-bellied marmots 'in the shape space': Sexual dimorphism, growth and allometry of the mandible. *Zoomorphology*.
- CHEVERUD, J. M., E. J. ROUTMAN, AND D. J. IRSCHICK. 1997. Pleiotropic effects of individual gene loci on mandibular morphology. *Evolution* 51:2006–2016.
- CORTI, M., C. FADDA, S. SIMSON, AND E. NEVO. 1996. Size and shape variation in the mandible of the fossorial rodent *Spalax ehrenbergi*. Pages 303–320 in *Advances in morphometrics* (L. F. Marcus, M. Corti, A. Loy, G. J. P. Naylor, and D. E. Slice, eds.). Plenum, New York.
- CORTI, M., L. F. MARCUS, AND E. HINGST-ZAHER. 2000. Introduction to symposium: Geometric morphometrics in mammology. *Hystrix* 11:3–7.
- CORTI, M., AND F. J. ROHLF. 2001. Chromosomal speciation and phenotypic evolution in the house mouse. *Biol. J. Linn. Soc.* 73:99–112.
- DRYDEN, I. L., AND K. V. MARDIA. 1998. Statistical shape analysis. John Wiley and Sons, New York.
- DUARTE, L. C., L. R. MONTEIRO, F. J. VON ZUBEN, AND S. F. DOS REIS. 2000. Variation in the mandible shape in *Thrichomys apereoides* (Mammalia: Rodentia): Geometric analysis of a complex morphological structure. *Syst. Biol.* 49:563–578.
- EMERSON, S. B., AND D. M. BRAMBLE. 1993. Scaling, allometry and skull design. Pages 385–421 in *The skull, Volume 3. Functional and evolutionary mechanisms* (J. Hanken and B. K. Hall, eds.). Univ. Chicago Press, Chicago.
- FABBRIS, L. 1997. Statistica multivariata: Analisi esplorativa dei dati. McGraw-Hill Libri Italia, Milano.
- FELSENSTEIN, J. 1985. Phylogenies and the comparative method. *Am. Nat.* 126:1–25.
- GROMOV, I. M., D. I. BIBIKOV, N. I. KALABUKHOV, AND M. N. MEIER. 1965. Nazemnye belich'i (Marmotinae) [Ground squirrels (Marmotinae)] [Fauna SSSR, Mlekopitayushchie [Fauna of the USSR, Mammals] Nauka, Moscow, Volume 3(2).
- HAFNER, D. J. 1984. Evolutionary relationships of the Nearctic Sciuridae. Pages 3–23 in *The biology of ground-dwelling squirrels* (J. O. Murie and G. R. Michener, eds.). Univ. Nebraska Press, Lincoln.
- HAIR, J. H., R. E. ANDERSON, R. L. TATHAM, AND W. C. BLACK. 1998. Multivariate data analysis. Prentice-Hall, Upper Saddle River, New Jersey.
- HALL, E. R. 1981. The mammals of North America, 2nd edition, Volume 1. John Wiley and Sons, New York.
- HARVEY, P. H., AND M. D. PAGEL. 1991. The comparative method in evolutionary biology. Oxford Univ. Press, New York.
- HIEMAE, K. 1971a. The structure and function of the jaw muscles in the rat (*Rattus norvegicus* L.). II. Their fibre type and composition. *Zool. J. Linn. Soc.* 50:101–109.
- HIEMAE, K. 1971b. The structure and function of the jaw muscles in the rat (*Rattus norvegicus* L.). III. The mechanics of the muscles. *Zool. J. Linn. Soc.* 50:111–132.
- HIEMAE, K., AND W. J. B. HOUSTON. 1971. The structure and function of the jaw muscles in the rat (*Rattus norvegicus* L.). I. Their anatomy and internal architecture. *Zool. J. Linn. Soc.* 50:75–99.
- HOFFMANN, R. S., C. G. ANDERSON, R. W. THORINGTON, JR., AND L. R. HEANEY. 1993. Family Sciuridae. Pages 419–465 in *Mammal species of the world* (D. E. Wilson and D. M. Reeder, eds.). Smithsonian Institution Press, Washington, D.C.
- HOFFMANN, R. S., J. W. KOEPL, AND C. F. NADLER. 1979. The relationship of the amphiberian marmots (Mammalia, Sciuridae). *Occas. Pap. Mus. Nat. Hist. Univ. Kans.* 83:1–56.
- HOFFMANN, R. S., AND C. F. NADLER. 1968. Chromosomes and systematics of some North American species of the genus *Marmota* (Rodentia: Sciuridae). *Experientia* 24:740–742.
- KLINGENBERG, C. P., AND L. J. LEAMY. 2001. Quantitative genetics of geometric shape in the mouse mandible. *Evolution* 55:2342–2352.
- KLINGENBERG, C. P., L. J. LEAMY, E. J. ROUTMAN, AND J. M. CHEVERUD. 2001. Genetic architecture of mandible shape in mice: Effects of quantitative trait loci analyzed by geometric morphometrics. *Genetics* 157:785–802.
- KRUCKENHAUSER, L., W. PINSKER, E. HARING, AND W. ARNOLD. 1999. Marmot phylogeny revisited: Molecular evidence for a diphyletic origin of sociality. *J. Zool. Syst. Evol. Res.* 37:49–56.
- LYAPUNOVA, E. A., G. G. BOYESKOROV, AND N. N. VORONTSOV. 1992. *Marmota camtschatica* Pall. Nearctic element in Palearctic *Marmota*

- fauna. Pages 185–191 in Proceedings of the 1st international symposium on alpine marmot and genus *Marmota* (B. Bassano, P. Durio, U. Gallo Orsi, and E. Macchi, eds.). Torino. Available at <http://cons-dev.univ-lyon1.fr/MARMOTTE/MARMOT.EN/MarmotNetwork.html>.
- MACLEOD, N., AND P. FOREY. 2002. Shape, morphology and phylogeny. Taylor and Francis, London.
- MANLY, B. F. J. 1994. Multivariate statistical methods. A primer, 2nd edition. Chapman and Hall, London.
- MARCUS, L. F. 1990. Traditional morphometrics. Pages 77–122 in Proceedings of the Michigan morphometrics workshop (F. J. Rohlf and F. L. Bookstein, eds.). Univ. Michigan Museum of Zoology, Ann Arbor.
- MARCUS, L. F., E. HINGST-ZAHER, AND H. ZAHER. 2000. Application of landmark morphometrics to skulls representing the orders of living mammals. *Hystrix* 11:27–48.
- MEIN, P. 1992. Taxonomy. Pages 6–12 in Proceedings of the 1st international symposium on alpine marmot and genus *Marmota* (B. Bassano, P. Durio, U. Gallo Orsi, and E. Macchi, eds.). Torino. Available at <http://cons-dev.univ-lyon1.fr/MARMOTTE/MARMOT.EN/MarmotNetwork.html>.
- O'HIGGINS, P. 2000. The study of morphological variation in the hominid fossil record: Biology, landmarks and geometry. *J. Anat.* 197:103–120.
- POLE, S. B., AND D. I. BIBIKOV. 1991. Dynamics of population structure and mechanisms of maintaining optimal population density of the grey marmots. Pages 148–171 in Population structure of the marmot (V. Yu. Rumiantsev, ed.). USSR Theriological Society, Moscow.
- POTAPOVA, E. G., A. JU. PUZACHENKO, AND D. I. BIBIKOV. 1997. Morphological differentiation of two forms (*Marmota baibacina* and *M. sibirica*) in southern Mongolia. Pages 181–182 in Holarctic marmot as a factor of biodiversity, III international conference on marmots, abstracts (V. Yu. Rumiantsev, A. A. Nikol'skii, and O. V. Brandler, eds.). Cheboksary. Available at <http://cons-dev.univ-lyon1.fr/MARMOTTE/MARMOT.EN/MarmotNetwork.html>.
- ROHLF, F. J. 1970. Adaptive hierarchical clustering schemes. *Syst. Zool.* 19:58–82.
- ROHLF, F. J. 1997. NTSYS-pc, version 2.01d. Exeter Software, Setauket, New York.
- ROHLF, F. J. 1998a. On applications of geometric morphometrics to study of ontogeny and phylogeny. *Syst. Biol.* 47:147–158.
- ROHLF, F. J. 1998b. TpsRegr 1.20. Department of Ecology and Evolution, State Univ. New York, Stony Brook.
- ROHLF, F. J. 1998c. TpsRelw 1.18. Department of Ecology and Evolution, State Univ. New York, Stony Brook.
- ROHLF, F. J. 1998d. TpsSmall 1.14. Department of Ecology and Evolution, State Univ. New York, Stony Brook.
- ROHLF, F. J. 1999. TpsDig 1.18. Department of Ecology and Evolution, State Univ. New York, Stony Brook.
- ROHLF, F. J., A. LOY, AND M. CORTI. 1996. Morphometric analysis of Old World Talpidae (Mammalia, Insectivora) using partial-warp scores. *Syst. Biol.* 45:344–362.
- ROHLF, F. J., AND L. F. MARCUS. 1993. A revolution in morphometrics. *Trends Ecol. Evol.* 8:129–132.
- ROHLF, F. J., AND D. E. SLICE. 1990. Extensions of the Procrustes method for the optimal superimposition of landmarks. *Syst. Zool.* 39:40–59.
- ROTH, V. L. 1996. Cranial integration in the Sciuridae. *Am. Zool.* 36:14–23.
- RUMIANTSEV, V. YU., AND D. I. BIBIKOV. 1994. Marmots in Europe: History and prospects. Pages 193–214 in Actual problems of marmot investigations (V. Yu. Rumiantsev, ed.). ABF, Moscow.
- SLICE, D. 1999. Morpheus et al. (beta version). Department of Ecology and Evolution, State Univ. New York, Stony Brook.
- SMITH, G. R. 1990. Homology in morphometrics and phylogenetics. Pages 325–338 in Proceedings of the Michigan Morphometrics Workshop (F. J. Rohlf and F. L. Bookstein, eds.). University of Michigan Museum of Zoology, Ann Arbor.
- STEPAN, S. C., M. R. AKHVERDYAN, E. A. LYAPUNOVA, D. G. FRASER, N. N. VORONTSOV, R. S. HOFFMANN, AND M. J. BRAUN. 1999. Molecular phylogeny of the marmots (Rodentia, Sciuridae): Tests of evolutionary and biogeographic hypotheses. *Syst. Biol.* 48:715–734.
- SWIDERSKI, D. L. 1993. Morphological evolution of the scapula in the tree squirrels, chipmunks and ground squirrels (Sciuridae): An analysis using thin-plate splines. *Evolution* 46:1854–1873.
- SWIDERSKI, D. L., AND S. A. JANSÁ. 1998. Phylogenetic relationships of terrestrial squirrels (Marmotini, Sciuridae). The Society for Integrative and Comparative Biology Annual Meeting, Abstracts. *Am. Zool.* 38:103A.
- SWIDERSKI, D. L., M. L. ZELDITCH, AND W. L. FINK. 1999. Comparability and homology of morphometric data. In Abstracts of the Systematic Association symposium: Morphology, shape and phylogenetics ([www.nhm.ac.uk/palaeontology/meetings/samp/samp.html](http://www.nhm.ac.uk/palaeontology/meetings/samp/samp.html)).
- THOMAS, W. K., AND S. L. MARTIN. 1993. A recent origin of marmots. *Mol. Phylogenet. Evol.* 2:330–336.
- THOMPSON, D' A. W. 1917. On growth and form. Cambridge University Press, London.
- THORINGTON, R. W., JR., AND K. DARROW. 1996. Jaw muscles of Old World squirrels. *J. Morphol.* 230:145–165.
- THORPE, R. S., M. CORTI, AND E. CAPANNA. 1982. Morphometric divergence of Robertsonian populations/species of *Mus*: A multivariate analysis of size and shape. *Experientia* 38:920–923.
- VAN VUREN, D., AND C. M. SALSBUURY. 1992. The relation between pre-molar wear and age in yellow-bellied marmots, *Marmota flaviventris*. *Can. Field-Nat.* 106:134–136.
- VELHAGEN, W. A., AND V. L. ROTH. 1997. Scaling the mandible in squirrels. *J. Morphol.* 232:107–132.
- ZIMINA, R. P., AND I. P. GERASIMOV. 1973. The periglacial expansion of marmots (*Marmota*) in middle Europe during Pleistocene. *J. Mammal.* 54:327–340.

First submitted 10 June 2002; reviews returned 6 October 2002;  
final acceptance 6 January 2003  
Associate Editor: Junhyong Kim

APPENDIX 1. Museum catalog number and locality of collection for the adult specimens. ? = unknown.

| Species/Subspecies       | Museum <sup>a</sup> | Catalog no. | Locality <sup>b</sup> |
|--------------------------|---------------------|-------------|-----------------------|
| <i>Marmota baibacina</i> |                     |             |                       |
| <i>centralis</i>         | BMNHL               | 12.4.1.41   | Alatau                |
| <i>centralis</i>         | BMNHL               | 12.4.1.39   | Alatau                |
| <i>centralis</i>         | BMNHL               | 12.4.1.40   | Alatau                |
| <i>centralis</i>         | BMNHL               | 12.4.1.38   | Altaj                 |
| <i>centralis</i>         | BMNHL               | 14.5.10.74  | centr. Asia           |
| <i>centralis</i>         | BMNHL               | 14.5.10.73  | centr. Asia           |
| <i>centralis</i>         | BMNHL               | 8.3.2.74    | Thian Shan            |
| <i>centralis</i>         | BMNHL               | 9.4.3.110   | Turkestan             |
| <i>centralis</i>         | BMNHL               | 92.1.1.6    | W Turkestan           |
| ?                        | BMNHL               | 98.12.15.1  | NW Mongolia           |
| ?                        | USNM                | 175424      | Altaj                 |
| ?                        | USNM                | 175426      | Altaj                 |
| ?                        | USNM                | 102577      | NW Mongolia           |
| ?                        | ZIN                 | 63932       | Altaj                 |
| ?                        | ZIN                 | 63933       | Altaj                 |
| ?                        | ZIN                 | 63931       | Altaj                 |
| ?                        | ZIN                 | 63930       | Altaj                 |
| ?                        | ZIN                 | 31871       | E Kazakhstan          |
| ?                        | ZIN                 | 50165       | E Kazakhstan          |
| ?                        | ZIN                 | 84028       | E Kazakhstan          |
| ?                        | ZIN                 | 84029       | E Kazakhstan          |
| ?                        | ZIN                 | 84030       | E Kazakhstan          |
| ?                        | ZIN                 | 46147       | E Kazakhstan          |
| ?                        | ZIN                 | 39242       | Thian Shan            |



## APPENDIX 1. Continued

| Species/Subspecies | Museum <sup>a</sup> | Catalog no. | Locality <sup>b</sup>  |
|--------------------|---------------------|-------------|------------------------|
| <i>M. bobak</i>    |                     |             |                        |
|                    | BMNHL               | 19.7.7.3325 | Russia                 |
|                    | BMNHL               | 594a        | Russia                 |
|                    | BMNHL               | 37.6.12.6   | Russia                 |
|                    | ZIN                 | 44227       | N centr. Kazakistan    |
|                    | ZIN                 | 44236       | N centr. Kazakistan    |
|                    | ZIN                 | 44218       | N centr. Kazakistan    |
|                    | ZIN                 | 44204       | N centr. Kazakistan    |
|                    | ZIN                 | 44212       | N centr. Kazakistan    |
|                    | ZIN                 | 44238       | N centr. Kazakistan    |
|                    | ZIN                 | 44208       | N centr. Kazakistan    |
|                    | ZIN                 | 44229       | N centr. Kazakistan    |
|                    | ZIN                 | 11987 oc    | S centr. Europ. Russia |
|                    | ZIN                 | 50300       | S centr. Europ. Russia |
|                    | ZIN                 | 50292       | S centr. Europ. Russia |
|                    | ZIN                 | 50283       | S centr. Europ. Russia |
|                    | ZIN                 | 50297       | S centr. Europ. Russia |
|                    | ZIN                 | 50293       | S centr. Europ. Russia |
|                    | ZIN                 | 50285       | S centr. Europ. Russia |
|                    | ZIN                 | 50287       | S centr. Europ. Russia |
|                    | ZIN                 | 50289       | S centr. Europ. Russia |
|                    | ZIN                 | 15459 oc    | SE Europ. Russia       |
| <i>M. broweri</i>  |                     |             |                        |
|                    | USNM                | 290276      | Alaska                 |
|                    | USNM                | 583154      | Alaska                 |
|                    | USNM                | 583155      | Alaska                 |
| <i>M. caligata</i> |                     |             |                        |
| <i>caligata</i>    | USNM                | 74996       | Alaska                 |
| <i>caligata</i>    | USNM                | 96533       | Alaska                 |
| <i>caligata</i>    | USNM                | 96207       | Alaska                 |
| <i>caligata</i>    | USNM                | 98154       | Alaska                 |
| <i>caligata</i>    | USNM                | 271698      | Alaska                 |
| <i>caligata</i>    | USNM                | 271699      | Alaska                 |
| <i>caligata</i>    | USNM                | 271701      | Alaska                 |
| <i>caligata</i>    | USNM                | 48580       | Alaska                 |
| <i>caligata</i>    | USNM                | 96206       | Alaska                 |
| <i>caligata</i>    | USNM                | 146449      | Alaska                 |
| <i>caligata</i>    | USNM                | 135161      | Yukon                  |
| <i>caligata</i>    | USNM                | 135163      | Yukon                  |
| <i>cascadensis</i> | USNM                | 88005       | British Columbia       |
| <i>cascadensis</i> | USNM                | 88006       | British Columbia       |
| <i>cascadensis</i> | USNM                | 42638       | Washington             |
| <i>cascadensis</i> | USNM                | 42793       | Washington             |
| <i>cascadensis</i> | USNM                | 90132       | Washington             |
| <i>cascadensis</i> | USNM                | 226719      | Washington             |
| <i>cascadensis</i> | USNM                | 233212      | Washington             |
| <i>cascadensis</i> | USNM                | 90134       | Washington             |
| <i>nivaria</i>     | USNM                | 221012      | Alberta                |
| <i>nivaria</i>     | USNM                | 114833      | Idaho                  |
| <i>nivaria</i>     | USNM                | 72222       | Montana                |
| <i>nivaria</i>     | USNM                | 72225       | Montana                |
| <i>nivaria</i>     | USNM                | 72235       | Montana                |
| <i>nivaria</i>     | USNM                | 72223       | Montana                |
| <i>okanagana</i>   | USNM                | 81913       | Alberta                |
| <i>okanagana</i>   | USNM                | 66696       | British Columbia       |
| <i>okanagana</i>   | USNM                | 66697       | British Columbia       |
| <i>okanagana</i>   | USNM                | 66698       | British Columbia       |
| <i>okanagana</i>   | USNM                | 67073       | British Columbia       |
| <i>oxytona</i>     | USNM                | 174503      | Alberta                |
| <i>oxytona</i>     | USNM                | 174502      | Alberta                |
| <i>oxytona</i>     | USNM                | 53595       | British Columbia       |
| <i>oxytona</i>     | USNM                | 170741      | British Columbia       |
| <i>oxytona</i>     | USNM                | 101300      | British Columbia       |
| <i>oxytona</i>     | USNM                | 202790      | British Columbia       |
| <i>oxytona</i>     | USNM                | 226148      | British Columbia       |
| <i>sheldoni</i>    | USNM                | 137319      | Alaska                 |
| <i>vigilis</i>     | USNM                | 97952       | Alaska                 |

## APPENDIX 1. Continued

| Species/Subspecies     | Museum <sup>a</sup> | Catalog no.  | Locality <sup>b</sup>    |
|------------------------|---------------------|--------------|--------------------------|
| <i>vigilis</i>         | USNM                | 97953        | Alaska                   |
| <i>vigilis</i>         | USNM                | 235255       | Alaska                   |
| <i>vigilis</i>         | USNM                | 235257       | Alaska                   |
| ?                      | BMNHL               | 593.a        | Hudson Bay               |
|                        |                     | (45.7.4.9)   |                          |
| <i>M. camtschatica</i> |                     |              |                          |
| <i>bunpei</i>          | BMNHL               | 1937.6.12.10 | Jakutia                  |
|                        |                     | (15084)      |                          |
| ?                      | BMNHL               | 58.11.18.3   | Kamtschatka              |
| ?                      | BMNHL               | 69.4.20.1    | Kamtschatka              |
| ?                      | ZIN                 | 57873        | E Transbaikal Region     |
| ?                      | ZIN                 | 57874        | E Transbaikal Region     |
| ?                      | ZIN                 | 57872        | E Transbaikal Region     |
| ?                      | ZIN                 | 57880        | E Transbaikal Region     |
| ?                      | ZIN                 | 57879        | E Transbaikal Region     |
| ?                      | ZIN                 | 57877        | E Transbaikal Region     |
| ?                      | ZIN                 | 78912        | E Transbaikal Region     |
| ?                      | ZIN                 | 41505        | Jakutia                  |
| ?                      | ZIN                 | 41449        | Jakutia                  |
| ?                      | ZIN                 | 41531        | Jakutia                  |
| ?                      | ZIN                 | 41550        | Jakutia                  |
| ?                      | ZIN                 | 41475        | Jakutia                  |
| ?                      | ZIN                 | 41502        | Jakutia                  |
| ?                      | ZIN                 | 41503        | Jakutia                  |
| ?                      | ZIN                 | 41514        | Jakutia                  |
| ?                      | ZIN                 | 13561 oc     | Jakutia                  |
| ?                      | ZIN                 | 78913        | Kamtschatka              |
| <i>M. caudata</i>      |                     |              |                          |
| <i>aurea</i>           | USNM                | 62114        | Pamir                    |
| <i>aurea</i>           | USNM                | 62115        | Pamir                    |
| <i>aurea</i>           | USNM                | 62118        | Pamir                    |
| ?                      | USNM                | 35499        | Kashmir (N India)        |
| ?                      | USNM                | 62112        | Kashmir (N India)        |
| ?                      | USNM                | 173377       | Kashmir (N India)        |
| ?                      | USNM                | 173380       | Kashmir (N India)        |
| ?                      | USNM                | 173381       | Kashmir (N India)        |
| ?                      | USNM                | 173382       | Kashmir (N India)        |
| ?                      | USNM                | 173383       | Kashmir (N India)        |
| ?                      | USNM                | 35500        | Kashmir (N India)        |
| ?                      | USNM                | 173384       | Kashmir (N India)        |
| ?                      | USNM                | 298212       | N Pakistan               |
| ?                      | USNM                | 327143       | N Pakistan               |
| ?                      | USNM                | 353196       | N Pakistan               |
| ?                      | USNM                | 353197       | N Pakistan               |
| ?                      | USNM                | 353199       | N Pakistan               |
| ?                      | USNM                | 353200       | N Pakistan               |
| ?                      | BMNHL               | 10.12.2.25   | E Uzbekistan or W Pamir  |
| ?                      | BMNHL               | 69.493       | E Pakistan               |
| ?                      | BMNHL               | 88.3.20.25   | Kashmir (N India)        |
| ?                      | BMNHL               | 5.10.8.2     | Kashmir (N India)        |
| ?                      | BMNHL               | 8.7.6.27     | Kashmir (N India)        |
| ?                      | BMNHL               | 1937.6.12.7  | Kirghizistan             |
| ?                      | BMNHL               | 91.5.16.2    | Pamir                    |
| ?                      | BMNHL               | 92.1.1.7     | Pamir                    |
| ?                      | BMNHL               | 9.4.3.112    | Turkestan (E Uzbekistan) |
| ?                      | BMNHL               | 76.3.9.3     | ?                        |
| ?                      | BMNHL               | 97.10.3.54   | ?                        |
| ?                      | BMNHL               | 8.10.3.16    | ?                        |
| ?                      | ZIN                 | 40555        | Pamir                    |
| ?                      | ZIN                 | 40553        | Pamir                    |
| ?                      | ZIN                 | 27912        | Pamir-Alai               |
| ?                      | ZIN                 | 51537        | Pamir-Alai               |
| ?                      | ZIN                 | 22535        | Pamir-Alai               |
| <i>M. flaviventris</i> |                     |              |                          |
| <i>avara</i>           | USNM                | 99759        | British Columbia         |
| <i>avara</i>           | USNM                | 99760        | British Columbia         |
| <i>avara</i>           | USNM                | 221898       | Idaho                    |
| <i>avara</i>           | USNM                | 221896       | Nevada                   |

## APPENDIX 1. Continued

| Species/Subspecies   | Museum <sup>a</sup> | Catalog no. | Locality <sup>b</sup> |
|----------------------|---------------------|-------------|-----------------------|
| <i>avara</i>         | USNM                | 79365       | Oregon                |
| <i>avara</i>         | USNM                | 212471      | Oregon                |
| <i>avara</i>         | USNM                | 242645      | Oregon                |
| <i>avara</i>         | USNM                | 89312       | Washington            |
| <i>avara</i>         | USNM                | 234960      | Washington            |
| <i>avara</i>         | USNM                | 274340      | Washington            |
| <i>dacota</i>        | USNM                | 168884      | South Dakota          |
| <i>dacota</i>        | USNM                | 191366      | South Dakota          |
| <i>dacota</i>        | USNM                | 191367      | South Dakota          |
| <i>dacota</i>        | USNM                | 191369      | South Dakota          |
| <i>dacota</i>        | USNM                | 468884      | South Dakota          |
| <i>dacota</i>        | USNM                | 65920       | Wyoming               |
| <i>engelhardti</i>   | USNM                | 157828      | Utah                  |
| <i>engelhardti</i>   | USNM                | 158033      | Utah                  |
| <i>engelhardti</i>   | USNM                | 158980      | Utah                  |
| <i>engelhardti</i>   | USNM                | 232665      | Utah                  |
| <i>engelhardti</i>   | USNM                | 244551      | Utah                  |
| <i>engelhardti</i>   | USNM                | 244552      | Utah                  |
| <i>engelhardti</i>   | USNM                | 158500      | Utah                  |
| <i>flaviventris</i>  | USNM                | 100532      | California            |
| <i>flaviventris</i>  | USNM                | 100533      | California            |
| <i>flaviventris</i>  | USNM                | 88243       | California            |
| <i>flaviventris</i>  | USNM                | 23951       | Nevada                |
| <i>flaviventris</i>  | USNM                | 80360       | Oregon                |
| <i>flaviventris</i>  | USNM                | 89311       | Oregon                |
| <i>flaviventris</i>  | USNM                | 211232      | Oregon                |
| <i>luteola</i>       | USNM                | 139082      | Colorado              |
| <i>luteola</i>       | USNM                | 74057       | Colorado              |
| <i>luteola</i>       | USNM                | 25523       | Wyoming               |
| <i>luteola</i>       | USNM                | 25524       | Wyoming               |
| <i>luteola</i>       | USNM                | 25527       | Wyoming               |
| <i>luteola</i>       | USNM                | 186520      | Wyoming               |
| <i>nosophora</i>     | USNM                | 575170      | Colorado              |
| <i>nosophora</i>     | USNM                | 156923      | Idaho                 |
| <i>nosophora</i>     | USNM                | 168477      | Montana               |
| <i>nosophora</i>     | USNM                | 229842      | Montana               |
| <i>nosophora</i>     | USNM                | 233382      | Montana               |
| <i>nosophora</i>     | USNM                | 291192      | Montana               |
| <i>nosophora</i>     | USNM                | 243663      | Utah                  |
| <i>nosophora</i>     | USNM                | 243664      | Utah                  |
| <i>nosophora</i>     | USNM                | 147183      | Wyoming               |
| <i>nosophora</i>     | USNM                | 168799      | Wyoming               |
| <i>nosophora</i>     | USNM                | 180918      | Wyoming               |
| <i>nosophora</i>     | USNM                | 177297      | Wyoming               |
| <i>obscura</i>       | USNM                | 72565       | New Mexico            |
| <i>obscura</i>       | USNM                | 128750      | New Mexico            |
| <i>obscura</i>       | USNM                | 128753      | New Mexico            |
| <i>obscura</i>       | USNM                | 128754      | New Mexico            |
| <i>obscura</i>       | USNM                | 228271      | New Mexico            |
| <i>obscura</i>       | USNM                | 228273      | New Mexico            |
| <i>obscura</i>       | USNM                | 133505      | New Mexico            |
| <i>parvula</i>       | USNM                | 93688       | Nevada                |
| <i>parvula</i>       | USNM                | 93689       | Nevada                |
| <i>parvula</i>       | USNM                | 93690       | Nevada                |
| <i>parvula</i>       | USNM                | 41914       | California            |
| <i>parvula</i>       | USNM                | 42368       | California            |
| <i>parvula</i>       | USNM                | 42112       | California            |
| <i>parvula</i>       | USNM                | 108792      | California            |
| <i>sierrae</i>       | BMNHL               | 40.823      | California            |
| <i>M. himalayana</i> |                     |             |                       |
| <i>himalayana</i>    | USNM                | 62122       | Chinese Turkestan     |
| <i>himalayana</i>    | USNM                | 84099       | Kashmir (N India)     |
| <i>himalayana</i>    | USNM                | 84100       | Kashmir (N India)     |
| <i>himalayana</i>    | USNM                | 84101       | Kashmir (N India)     |
| <i>himalayana</i>    | USNM                | 84104       | Kashmir (N India)     |
| <i>himalayana</i>    | USNM                | 198637      | Kashmir (N India)     |
| <i>himalayana</i>    | USNM                | 198638      | Kashmir (N India)     |
| <i>robusta</i>       | USNM                | 144038      | China                 |
| <i>robusta</i>       | USNM                | 144039      | China                 |

## APPENDIX 1. Continued

| Species/Subspecies | Museum <sup>a</sup> | Catalog no.    | Locality <sup>b</sup>                |
|--------------------|---------------------|----------------|--------------------------------------|
| <i>robusta</i>     | USNM                | 240674         | Kansu (NW China)                     |
| <i>robusta</i>     | USNM                | 240675         | Kansu (NW China)                     |
| <i>robusta</i>     | USNM                | 240677         | Kansu (NW China)                     |
| <i>robusta</i>     | USNM                | 102576         | Tibet                                |
| <i>robusta</i>     | USNM                | 255960         | Tibet                                |
| ?                  | USNM                | 576183         | Kunlun Shan (China)                  |
| ?                  | USNM                | 576184         | Kunlun Shan (China)                  |
| ?                  | USNM                | 573031         | Kunlun Shan (China)                  |
| ?                  | USNM                | 573037         | Chinese Turkestan                    |
| ?                  | BMNHL               | 96.11.4.9      | Sichuan (centr. China)               |
| ?                  | BMNHL               | 96.11.4.2      | Sichuan (centr. China)               |
| ?                  | BMNHL               | 91.10.7.98     | Sikkim (N India)                     |
| ?                  | BMNHL               | 23.9.1.41      | Tibet                                |
| ?                  | BMNHL               | 5.12.5.2       | Tibet                                |
| ?                  | BMNHL               | 5.12.5.3       | Tibet                                |
| ?                  | BMNHL               | 23.9.1.38      | Tibet                                |
| ?                  | BMNHL               | 23.9.1.40      | Tibet                                |
| ?                  | BMNHL               | 22.9.1.82      | Yunnan, Mekong-<br>Yangtze (S China) |
| ?                  | BMNHL               | 11.2.1.95      | Kansu (NW China)                     |
| ?                  | BMNHL               | 11.2.1.94      | Kansu (NW China)                     |
| ?                  | BMNHL               | 99.3.1.13      | ?                                    |
| ?                  | BMNHL               | 8.2.29.1       | ?                                    |
| ?                  | BMNHL               | 8.7.6.20       | ?                                    |
| ?                  | BMNHL               | 8.7.6.30       | ?                                    |
| <i>M. marmota</i>  |                     |                |                                      |
| <i>marmota</i>     | BMNHL               | 8.8.10.65      | French Alps                          |
| <i>marmota</i>     | BMNHL               | 8.8.10.145     | French Alps                          |
| <i>marmota</i>     | BMNHL               | 2.8.4.33       | Swiss Alps                           |
| <i>marmota</i>     | BMNHL               | 7.1.1.195      | Swiss Alps                           |
| <i>marmota</i>     | BMNHL               | 2.8.4.31       | Swiss Alps                           |
| <i>marmota</i>     | BMNHL               | 2.8.4.30       | Swiss Alps                           |
| <i>marmota</i>     | BMNHL               | 2.8.4.32       | Swiss Alps                           |
| <i>marmota</i>     | DBA UMR             | not in catalog | Appennini                            |
| <i>marmota</i>     | DBA UMR             | not in catalog | Appennini                            |
| <i>marmota</i>     | DBA UMR             | not in catalog | Appennini                            |
| <i>marmota</i>     | MSNM Ma             | 4532           | Italian Alps                         |
| <i>marmota</i>     | MSNM Ma             | 4799           | Italian Alps                         |
| <i>marmota</i>     | MSNM Ma             | 6103           | Italian Alps                         |
| <i>marmota</i>     | PNGP                | not in catalog | Italian Alps                         |
| <i>marmota</i>     | SC                  | 165            | Swiss Alps                           |
| <i>marmota</i>     | SC                  | 12             | Swiss Alps                           |
| <i>marmota</i>     | SC                  | 173            | Swiss Alps                           |
| <i>marmota</i>     | SC                  | 175(I)         | Swiss Alps                           |
| <i>marmota</i>     | SC                  | 178            | Swiss Alps                           |
| <i>marmota</i>     | SC                  | 26B            | Swiss Alps                           |
| <i>marmota</i>     | SC                  | 168            | Swiss Alps                           |
| <i>marmota</i>     | SC                  | 159 (I)        | Swiss Alps                           |
| <i>marmota</i>     | SC                  | 167            | Swiss Alps                           |
| <i>marmota</i>     | SC                  | 21B            | Swiss Alps                           |
| <i>marmota</i>     | SC                  | 25B            | Swiss Alps                           |
| <i>marmota</i>     | SC                  | 17             | Swiss Alps                           |
| <i>marmota</i>     | SC                  | 171            | Swiss Alps                           |
| <i>marmota</i>     | SC                  | 39             | Swiss Alps                           |
| <i>marmota</i>     | SC                  | 34B            | Swiss Alps                           |
| <i>marmota</i>     | SC                  | 159 (II)       | Swiss Alps                           |
| <i>marmota</i>     | SC                  | 161            | Swiss Alps                           |
| <i>marmota</i>     | SC                  | 149            | Swiss Alps                           |
| <i>marmota</i>     | SC                  | 40             | Swiss Alps                           |
| <i>marmota</i>     | SC                  | 29B            | Swiss Alps                           |
| <i>marmota</i>     | SC                  | 158            | Swiss Alps                           |
| <i>marmota</i>     | SC                  | 164            | Swiss Alps                           |
| <i>marmota</i>     | SC                  | 15             | Swiss Alps                           |
| <i>marmota</i>     | SC                  | 166            | Swiss Alps                           |
| <i>marmota</i>     | SC                  | 35B            | Swiss Alps                           |
| <i>marmota</i>     | SC                  | 36B            | Swiss Alps                           |
| <i>marmota</i>     | SC                  | 32             | Swiss Alps                           |
| <i>marmota</i>     | SC                  | 38B            | Swiss Alps                           |
| <i>marmota</i>     | SC                  | 45             | Swiss Alps                           |

## APPENDIX 1. Continued

| Species/Subspecies  | Museum <sup>a</sup> | Catalog no. | Locality <sup>b</sup> |
|---------------------|---------------------|-------------|-----------------------|
| <i>marmota</i>      | USNM                | 14336       | Swiss Alps            |
| <i>marmota</i>      | USNM                | 115219      | Swiss Alps            |
| <i>marmota</i>      | USNM                | 115220      | Swiss Alps            |
| <i>marmota</i>      | USNM                | 115221      | Swiss Alps            |
| <i>marmota</i>      | USNM                | 115222      | Swiss Alps            |
| ?                   | BMNHL               | 1087.b      | ?                     |
| ?                   | MSNM Ma             | 6084        | ?                     |
| ?                   | MSNM Ma             | 6085        | ?                     |
| <i>M. menzbieri</i> | ZIN                 | 45476       | E Uzbekistan          |
|                     | ZIN                 | 45474       | E Uzbekistan          |
|                     | ZIN                 | 65848       | E Uzbekistan          |
|                     | ZIN                 | 31704       | Kirghizistan          |
|                     | ZIN                 | 57912       | NW Tagikistan         |
|                     | ZIN                 | 45472       | Uzbekistan            |
|                     | ZIN                 | 65852       | Uzbekistan            |
| <i>M. monax</i>     |                     |             |                       |
| <i>canadensis</i>   | USNM                | 72186       | Minnesota             |
| <i>canadensis</i>   | USNM                | 72187       | Minnesota             |
| <i>canadensis</i>   | USNM                | 243949      | New Scotland          |
| <i>canadensis</i>   | USNM                | 191345      | North Dakota          |
| <i>ignava</i>       | USNM                | 291554      | Labrador              |
| <i>ignava</i>       | USNM                | 293895      | Labrador              |
| <i>monax</i>        | USNM                | 77924       | District of Columbia  |
| <i>monax</i>        | USNM                | 244482      | Illinois              |
| <i>monax</i>        | USNM                | 337132      | Indiana               |
| <i>monax</i>        | USNM                | 347752      | Indiana               |
| <i>monax</i>        | USNM                | 242724      | Maryland              |
| <i>monax</i>        | USNM                | 53920       | Missouri              |
| <i>monax</i>        | USNM                | 96574       | Pennsylvania          |
| <i>monax</i>        | USNM                | 396279      | Pennsylvania          |
| <i>monax</i>        | USNM                | 259345      | Virginia              |
| <i>monax</i>        | USNM                | 283359      | Virginia              |
| <i>ochracea</i>     | USNM                | 243607      | Alaska                |
| <i>ochracea</i>     | USNM                | 77142       | British Columbia      |
| <i>ochracea</i>     | USNM                | 77143       | British Columbia      |
| <i>ochracea</i>     | USNM                | 202785      | British Columbia      |
| <i>petrensis</i>    | USNM                | 291786      | British Columbia      |
| <i>petrensis</i>    | USNM                | 291787      | British Columbia      |
| <i>petrensis</i>    | USNM                | 101295      | British Columbia      |
| <i>petrensis</i>    | USNM                | 203532      | British Columbia      |
| <i>preblorum</i>    | USNM                | 78357       | Massachusetts         |
| <i>preblorum</i>    | USNM                | 78356       | Massachusetts         |
| <i>preblorum</i>    | USNM                | 78355       | Massachusetts         |
| <i>preblorum</i>    | USNM                | 78354       | Massachusetts         |
| <i>preblorum</i>    | USNM                | 78358       | Massachusetts         |
| <i>preblorum</i>    | USNM                | 96140       | Massachusetts         |
| <i>preblorum</i>    | USNM                | 23033       | New Hampshire         |
| <i>rufescens</i>    | USNM                | 35361       | Minnesota             |
| <i>rufescens</i>    | USNM                | 43560       | Minnesota             |
| <i>rufescens</i>    | USNM                | 186521      | Minnesota             |
| <i>rufescens</i>    | USNM                | 67692       | New York              |
| <i>rufescens</i>    | USNM                | 67693       | New York              |
| <i>rufescens</i>    | USNM                | 25184       | Ontario               |
| <i>rufescens</i>    | USNM                | 174594      | Ontario               |
| <i>rufescens</i>    | USNM                | 227256      | Wisconsin             |
| <i>rufescens</i>    | USNM                | 228929      | Wisconsin             |
| <i>rufescens</i>    | USNM                | 233345      | Wisconsin             |
| <i>rufescens</i>    | USNM                | 234703      | Wisconsin             |
| <i>rufescens</i>    | USNM                | 243073      | Wisconsin             |
| <i>rufescens</i>    | MSNM Ma             | 4550        | ?                     |
| ?                   | BMNHL               | 19.7.7.2552 | Canada                |
| ?                   | BMNHL               | 36.11.6.31  | Labrador              |
| ?                   | BMNHL               | 36.11.6.32  | Labrador              |
| ?                   | BMNHL               | 36.11.6.30  | Labrador              |
| ?                   | BMNHL               | 36.11.6.34  | Labrador              |
| ?                   | BMNHL               | 592.a       | Missouri              |
|                     |                     | (43.9.14.9) |                       |
| ?                   | BMNHL               | 6.1.6.6     | West Virginia         |

## APPENDIX 1. Continued

| Species/Subspecies               | Museum <sup>a</sup> | Catalog no.           | Locality <sup>b</sup>   |
|----------------------------------|---------------------|-----------------------|-------------------------|
| ?                                | BMNHL               | 592.c                 | ?                       |
| ?                                | BMNHL               | 592.e                 | ?                       |
| ?                                | BMNHL               | 592.d                 | ?                       |
|                                  |                     | (51.8.16.19)          |                         |
| ?                                | BMNHL               | 1.989.337             | ?                       |
| <i>M. olympus</i>                |                     |                       |                         |
|                                  | USNM                | 66950                 | Washington, Olympic P.  |
|                                  | USNM                | 67611                 | Washington, Olympic P.  |
|                                  | USNM                | 67612                 | Washington, Olympic P.  |
|                                  | USNM                | 90516                 | Washington, Olympic P.  |
|                                  | USNM                | 241657                | Washington, Olympic P.  |
|                                  | USNM                | 241658                | Washington, Olympic P.  |
|                                  | USNM                | 241947                | Washington, Olympic P.  |
|                                  | USNM                | 241948                | Washington, Olympic P.  |
|                                  | USNM                | 241659                | Washington, Olympic P.  |
|                                  | USNM                | 242102                | Washington, Olympic P.  |
| <i>M. sibirica</i>               |                     |                       |                         |
|                                  | USNM                | 175599                | Mongolia                |
|                                  | USNM                | 175600                | Mongolia                |
|                                  | USNM                | 175601                | Mongolia                |
|                                  | USNM                | 259440                | Mongolia                |
|                                  | USNM                | 268752                | Mongolia                |
|                                  | ZIN                 | 81139                 | Tuva (S centr. Siberia) |
|                                  | ZIN                 | 81137                 | Tuva (S centr. Siberia) |
|                                  | ZIN                 | 78671                 | Tuva (S centr. Siberia) |
|                                  | ZIN                 | 78672                 | Tuva (S centr. Siberia) |
|                                  | ZIN                 | 78663                 | Tuva (S centr. Siberia) |
|                                  | ZIN                 | 78670                 | Tuva (S centr. Siberia) |
|                                  | ZIN                 | 78666                 | Tuva (S centr. Siberia) |
|                                  | ZIN                 | 78680                 | Tuva (S centr. Siberia) |
|                                  | ZIN                 | 78682                 | Tuva (S centr. Siberia) |
|                                  | ZIN                 | 78689                 | Tuva (S centr. Siberia) |
|                                  | ZIN                 | 78687                 | Tuva (S centr. Siberia) |
|                                  | ZIN                 | 78690                 | Tuva (S centr. Siberia) |
|                                  | ZIN                 | 78679                 | Tuva (S centr. Siberia) |
|                                  | ZIN                 | 81142                 | Tuva (S centr. Siberia) |
|                                  | ZIN                 | 78686                 | Tuva (S centr. Siberia) |
|                                  | ZIN                 | 78684                 | Tuva (S centr. Siberia) |
| <i>M. vancouverensis</i>         |                     |                       |                         |
|                                  | MVZ                 | 12091                 | Vancouver Island        |
|                                  | MVZ                 | 12092                 | Vancouver Island        |
|                                  | MVZ                 | 12090                 | Vancouver Island        |
|                                  | MVZ                 | 12099                 | Vancouver Island        |
|                                  | MVZ                 | 12100                 | Vancouver Island        |
|                                  | MVZ                 | 12098                 | Vancouver Island        |
|                                  | MVZ                 | 12093                 | Vancouver Island        |
|                                  | MVZ                 | 12095                 | Vancouver Island        |
| <i>Spermophilus beldingi</i>     |                     |                       |                         |
|                                  | BMNHL               | 38.4.1.39             | California              |
|                                  | BMNHL               | 2.4.1.137             | California              |
|                                  | BMNHL               | 98.12.27.1<br>(88754) | California              |
| <i>S. citellus</i>               |                     |                       |                         |
| <i>gravojerici</i>               | BMNHL               | 33.4.4.3              | Bosnia                  |
| <i>gravojerici</i>               | BMNHL               | 31.11.11.40           | Greece                  |
| <i>gravojerici</i>               | BMNHL               | 31.11.11.37           | Greece                  |
| <i>karamani</i>                  | BMNHL               | 471.105               | Yugoslavia              |
| <i>karamani</i>                  | BMNHL               | 471.106               | Yugoslavia              |
| <i>karamani</i>                  | BMNHL               | 471.110               | Yugoslavia              |
| <i>S. richardsoni</i>            |                     |                       |                         |
|                                  | BMNHL               | 1938.4.1.53           | North Dakota            |
|                                  | BMNHL               | 1938.4.1.45           | North Dakota            |
|                                  | BMNHL               | 1938.4.1.46           | North Dakota            |
| <i>S. undulatus</i> <sup>c</sup> |                     |                       |                         |
|                                  | BMNHL               | 12.4.1.21             | Siberia                 |
|                                  | BMNHL               | 5.4.8.10              | Thian Shan              |
| <i>S. variegatus</i>             |                     |                       |                         |
| <i>grammurus</i>                 | BMNHL               | 92.11.1.10            | Colorado                |
| <i>grammurus</i>                 | BMNHL               | 55.275                | Messico                 |

## APPENDIX 1. Continued

| Species/Subspecies                   | Museum <sup>a</sup> | Catalog no.           | Locality <sup>b</sup> |            |
|--------------------------------------|---------------------|-----------------------|-----------------------|------------|
| <i>Cynomys leucurus</i>              | BMNHL               | 40.829                | Wyoming               |            |
| <i>C. ludovicianus</i>               | BMNHL               | 19.7.7.2841           | Kansas                |            |
|                                      | BMNHL               | 60.513                | Kansas                |            |
|                                      | BMNHL               | 67.7.8.34<br>(1433.b) | ?                     |            |
|                                      | BMNHL               | 77.436                | ?                     |            |
|                                      | BMNHL               | 1433.a                | ?                     |            |
| <i>Tamias sibiricus</i> <sup>d</sup> | USNM                | 200614                | Jakutia               |            |
|                                      | USNM                | 200617                | Jakutia               |            |
| <i>Tamias striatus</i>               | USNM                | 36950                 | Tennessee             |            |
|                                      | USNM                | 47413                 | Tennessee             |            |
|                                      | USNM                | 306058                | Virginia              |            |
| <i>Sciurus vulgaris</i>              |                     |                       |                       |            |
|                                      | <i>infuscatus</i>   | BMNHL                 | 7.10.17.1             | Spain      |
|                                      | <i>infuscatus</i>   | BMNHL                 | 25.7.1.9              | Spain      |
|                                      | ?                   | BMNHL                 | 471.115               | Yugoslavia |
|                                      | ?                   | BMNHL                 | 1937.3.22.108         | Yugoslavia |

<sup>a</sup>BMNHL = British Museum of Natural History (London, U.K.); MVZ = Museum of Vertebrate Zoology (Berkeley, CA); USNM = National Museum of Natural History (Washington, DC); ZIN = Zoological Institutes of the Russian Academy of Sciences (St. Petersburg, Russia), oc = osteological collection; PNGP = National Park Gran Paradiso (Torino, Italy); SC = collection of Dino Scaravelli; DBA UMR = Department of Animal Biology, University of Modena and Reggio Emilia; MSNM Ma = Museo di Storia Naturale di Milano.

<sup>b</sup>Geographic position of mountain ranges. Alatau: Kazakhstan, Kirghizistan, Uzbekistan; Altaï: Mongolia, south Siberia; Thian Shan: Kirghizistan, China; Alai: Kirghizistan; Pamir: Tagikistan.

<sup>c</sup>*Spermophilus undulatus* (Pallas, 1778) is a senior synonym of *S. evermanni* (Hoffmann et al., 1993), which is the species name in the BMNHL collection.

<sup>d</sup>The specimens were classified as *Eutamias sibiricus* in the USNM collection, but *Eutamias* was considered a subgenus of *Tamias* by Hoffmann et al. (1993).

## APPENDIX 2 ADULT IDENTIFICATION

The age of *Marmota flaviventris* specimens was estimated using Van Vuren and Salsbury's (1992) linear regression of age onto the paraconid–protoconid distance of the lower left premolar (Cardini and Tongiorgi, in press). Because no similar technique was available for evaluating age in the other marmot species (unless it has been published in the extensive but not easily accessible Russian literature), a method was developed to approximately recognize the adult speci-

mens. The mandible morphology and the dental measurements were combined to identify clusters of homogeneous specimens that roughly correspond to young and adults. In yellow-bellied marmots, young and adults have markedly different mandibles, but size and shape changes are extremely limited after sexual maturation (Cardini and Tongiorgi, in press). The gap between premolar cusps increases with age until yellow-bellied marmots are 4 years old (Van Vuren and Salsbury, 1992). Similar morphological trends are likely to hold for all marmot species, and the mandible form and the premolar wear were thus chosen for identifying adult specimens. The adult discrimination proceeded in three steps. First, unweighted pair-group average (UPGMA) cluster analysis of the matrix of squared Procrustes distances was used to find groups with marked differences in mandibular shape (the distances were squared to emphasize the separation between the main clusters). Then, a scatterplot of lower left premolar wear vs. mandibular size was employed to establish the correspondence between mandibular clusters and age groups. Clusters characterized by modest wear and small size corresponded to putative young, and large values of the two variables identified putative adults. Third, eventually, whenever the sample size was adequate and the statistical assumptions were not violated, a logistic regression of the two putative age groups (young and adult clusters) onto the mandible size and the paraconid–protoconid distance was performed to introduce a second criterion that may correct for possible misclassified specimens. Logistic regression was chosen over discriminant analysis because it is less sensitive to violations of the statistical assumptions and more suitable when the sample size is small or differs greatly in the two compared groups (Manly, 1994; Fabbri, 1997; Hair et al., 1998). The efficiency of the three-step method in discriminating adult marmots was tested in the yellow-bellied marmot sample. In four random subsamples of the same species, the results were compared with the age estimates of Van Vuren and Salsbury (1992). The adult hit ratio (adults correctly classified / total adults) was >95% in three samples and 75% and 62% in the other two. The misclassified young were never >4.6% of the specimens in the predicted group of adults. Because two other measures of premolar wear were available (paraconid–metaconid and protoconid–metaconid distances), other combinations of variables/techniques were tried to discriminate the two main age classes, but none of them worked as well as or better than the three-step method in recognizing the adults of *M. flaviventris*. Although the adult discrimination is rough and the method could not be tested on animals of known age or verified in other marmot species, it is likely to provide groups of morphologically homogeneous specimens. The classification outcome was partially confirmed by the putative adults having fully erupted teeth (Hoffmann et al., 1979; Pole, unpubl.). For premolar wear, mandibular size, and shape variables, differences between the groups of presumed young and adults were tested in all marmot species, always leading to significant results. The specimens of the outgroup species were chosen among those with fully erupted teeth to minimize age variability.