

The morphotaxonomy and distribution of the genus *Palisada* Nam (Ceramiales, Rhodophyta) from Myanmar

Abstract

The three species of the genus *Palisada* Nam collected from the coastal areas between Zar Det Gyi I. (Lat. 09°56'N, Long. 98°11'E) of the Taninthayi Coastal Zone and Kyauk Phyu (Lat. 19°26'N, Long. 93°33'E) of the Rakhine Coastal Zone, had been identified as *P. parvipapillata* (CK Tseng) KW Nam, *P. intermedia* (Yamada) KW Nam and *P. perforata* (Bory) KW Nam, based on the external and internal morphologies of the vegetative and reproductive structures. The comparison of the characteristics and key to the species of *Palisada* Nam from Myanmar were provided. All these 3 species of the genus *Palisada* Nam were newly recorded from Myanmar waters. With regard to local distribution, the plants of *P. intermedia* (Yamada) KW Nam occur only in the Rakhine Coastal Zone, whereas those of *P. perforata* (Bory) KW Nam and *P. parvipapillata* (CK Tseng) K.W. Nam predominate in both the Taninthayi and Rakhine Coastal Zones. The vertical phytogeographical distribution is wide for *P. parvipapillata* (CK Tseng) KW Nam and *P. perforata* (Bory) KW Nam, but narrow for *P. intermedia* (Yamada) KW Nam in all tropical and temperate oceans. In horizontal phytogeographical distribution, *P. perforata* (Bory) KW Nam and *P. intermedia* (Yamada) KW Nam extensively dominate in the Atlantic, Indian and Pacific Oceans, while *P. parvipapillata* (CK Tseng) KW Nam predominantly occurs in the Indian and Pacific Oceans.

Keywords: ceramiales, distribution, morphology, Myanmar, *Palisada* Nam, Rhodophyta, taxonomy

Volume 7 Issue 3 - 2018

Soe Pa Pa Kyaw,¹ U Soe-Htun²

¹Department of Marine Science, Mawlamyine University, Myanmar

²Director, Marine Science Association, Myanmar, (MSAM), Yangon, Myanmar

Correspondence: Soe Pa Pa Kyaw, Department of Marine Science, Mawlamyine University, Myanmar, Email soepapakyaw.marine@gmail.com

Received: March 23, 2018 | **Published:** June 20, 2018

Introduction

Saito¹ established the *Laurencia* complex into five sections-*Laurencia*, *Forsteriana*, *Pinnatifida*, *Chondrophyucus* and *Palisada*, based on the characteristics by the presence or absence of a palisade-like arrangement of epidermal cells, presence or absence of lenticular thickenings in the walls of medullary cells, thalli clearly compressed, presence or absence of secondary pit connections between epidermal cells and parallel or right-angle arrangement of tetrasporangia.

The *Laurencia* complex was recently divided into four genera: *Laurencia* Lamouroux (1813), *Chondrophyucus* (Tokida et Saito) Garbary and Harper (1998), *Osmundea* Stackhouse (1809) and *Palisada* Nam (2007), based on vegetative and reproductive structures.¹⁻³ The genus *Laurencia* is distinguished from the other three genera in having four pericentral cells per axial segment (two pericentral cells in *Osmundea*, *Chondrophyucus* and *Palisada*). The genus *Osmundea* is distinguished from the other genera in having tetrasporangial production from random epidermal cells rather than from particular pericentral cells and filament-type rather than trichoblast-type spermatangial development. The genus *Chondrophyucus* differs from others in having the first pericentral cell with lateral position of the trichoblast; spermatangial branches produced from two laterals on the suprabaasal cell of a trichoblast but remaining partly sterile; tetrasporangial axis with both the first and the second pericentral cells sterile.⁴ Nam³ established the genus *Palisada* characterized by the absence of secondary pit-connections between the superficial cortical cells and lenticular thickenings of the medullary cell walls, as well as by the tetrasporangial arrangement with the right angle type in the apical portion of the fertile ultimate branchlets. Tetraspores are tetrahedrally divided in all species of the

genus *Palisada*. Currently, 20 species of *Palisada* were recorded, widely occurring along temperate and tropical seas.⁵

In Myanmar, Kyi Win⁶ and Kyaw Soe and Kyi Win⁷ reported *Palisada perforata* (Bory) KW Nam as *Laurencia papillosa* (Forsk) Greville, Soe-Htun et al.,^{8,9} also recorded *Palisada perforata* (Bory) KW Nam as *Chondrophyucus papillosa* (C Agardh) Garbary and Harper, and *P. intermedia* (Yamada) Nam as *Chondrophyucus intermedia* (Yamada) Garbary and Harper. Zayar Aung¹⁰ & Myo Min Tun¹¹ identified only one species of *Palisada* as *P. parvipapillata* (CK Tseng) KW Nam from Kampani coastal areas. Moreover, Soe Pa Pa Kyaw¹² also identified three species of *Palisada*, viz., *P. parvipapillata* (C.K. Tseng) KW Nam, *P. intermedia* (Yamada) KW Nam and *P. perforata* (Bory) K.W. Nam from three Coastal Zones of Myanmar.

The objectives of this study are: 1) to identify the species of *Palisada* using the detailed morphological characteristics of vegetative and reproductive structures, and 2) to know the distribution ranges of the species of *Palisada* growing along both the three Coastal Zones of Myanmar and the coastal areas of the world.

Materials and Methods

The fresh (wet-stack) specimens preserved in 4% formaldehyde and seawater and dried herbarium specimens of the plants of the genus *Palisada* collected from the three Coastal Zones, Taninthayi Coastal Zone, Deltaic Coastal Zone and Rakhine Coastal Zone of Myanmar (Figure 52), and deposited in the Herbarium of Department of Marine Science, Mawlamyine University, Myanmar (MMB), from 1971 to 2013, were used for the identification of the species of *Palisada*, emphasized on morphology of the external and internal vegetative and reproductive structures.

The fragments of plant were squashed on microscope slides, and stained with aniline blue (0.5 g water soluble aniline blue in 100 ml distilled water and 5 ml conc. Acetic acid) and acid fuchsin (1% solution in distilled water and 70% alcohol) for detailed observations. The sections were prepared by hand using razor blades. Microscopic measurements were recorded in micrometer (μm) using the ocular meter. External and internal morphological structures were photographed with a Panasonic (Lumix) DMC-TZ 15 digital camera and processed using Adobe Photoshop CS.

Local distribution of the genus *Palisada* was arranged from the herbarium specimens examined. Phytogeographical distribution and potential uses of each species were prepared with the data from the literature collected. Ecological notes and associated algae of this species were also recorded during the periods of collections of specimens in the field.

This study follows the classification systems used by Saito, Nam, Guiry et al.,^{1,3,5,13} & Cordero, Silva et al.^{14,15}

Results

The marine benthic red algal species of the genus *Palisada* Nam (Ceramiales, Rhodophyta) collected from the 3 Coastal Zones of Myanmar from 1971 to 2013, were identified as *P. parvipapillata* (CK Tseng) KW Nam, *P. intermedia* (Yamada) KW Nam and *P. perforata* (Bory) KW Nam, mainly based on the external and internal morphologies of the vegetative and reproductive structures.

A classification of the genus *Palisada*

Phylum: Rhodophyta

Class: Florideophyceae

Order: Ceramiales

Family: Rhodomelaceae

Genus: *Palisada* Nam

Section: Palisadae Yamada

Species: *P. parvipapillata* (CK Tseng) KW Nam, *P. intermedia* (Yamada) KW Nam, *P. perforata* (Bory) KW Nam

Palisada parvipapillata (CK Tseng) KW Nam (Figures 1-19)

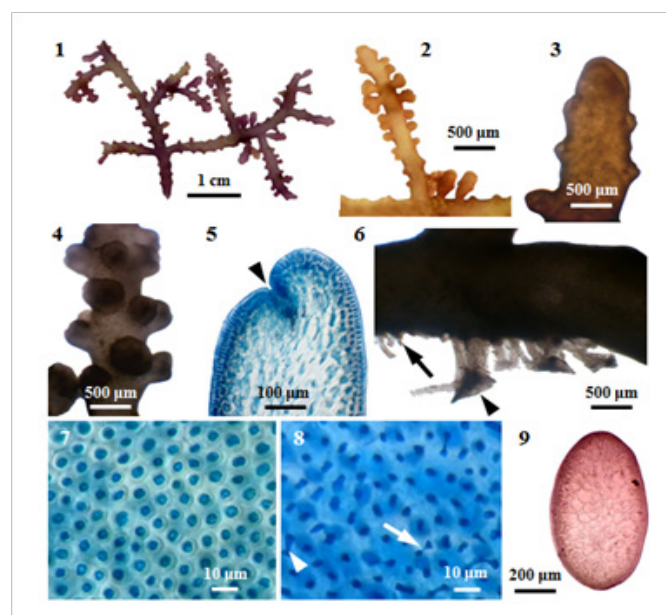
Type locality: Cape de'Aguiar, Hong Kong¹⁶

Description: Vegetative Structures

External features: Fronds (Figure 1) (Figure 2), prostrate (or decumbent), about 2.5 cm high, grow on rock, and attach to the substratum by stoloniferous discoid holdfast (Figure 6) in the lower intertidal zone; rigid in texture, and cartilaginous; brownish red (or) purplish colour; main axes percurrent, 1175-2050 μm long, and 725-1125 μm broad; secondary branches (Figure 3) (Figure 4), 950-1575 μm long, and 650-1025 μm ; branching pinnately (or) alternately; *corps en cerise* absence. In a surface view, the cortical cells in the main axis, rounded polygonal, 20-32 μm broad (Figure 7); while those in the secondary branch, elongated or more or less rounded, 12-24 μm broad. Lateral secondary pit connections between cortical cells are present. Sometimes, the secondary pit connections between cortical cells are fused (Figure 8).

Internal features: In transverse section, main axes (Figure 9), 850-1000 μm in diameter; cortical cells, elongated, and palisade-like layer;

20-48 μm long, and 12-20 μm broad in the lower to upper portions; with secondary pit connections (Figure 11) between these cells. The outer surface of the cortical cell wall projected to the surface (Figure 10). Medullary cells, more or less rounded or elongated; 44-140 μm long, and 28-88 μm broad in the lower to upper portions; with intercellular spaces (Figure 14) between these cells, lenticular thickenings in the walls of the medullary cells absent; two pericentral cells per axial cells (Figure 15). The primary and secondary pit connections between medullary cells are present. In longitudinal section, main axes (Figure 12), 700-800 μm broad; cortical cells, elongated, and palisade-like layer; 28-40 μm long, and 12-24 μm broad, with secondary pit connections (Figure 13) between these cells; medullary cells, elongated, 120-290 μm long, and 60-100 μm broad. The apical pit sunk in the apical depression (Figure 5). The vegetative trichoblasts (Figure 17), 104 μm long, are repeatedly dichotomously branched.



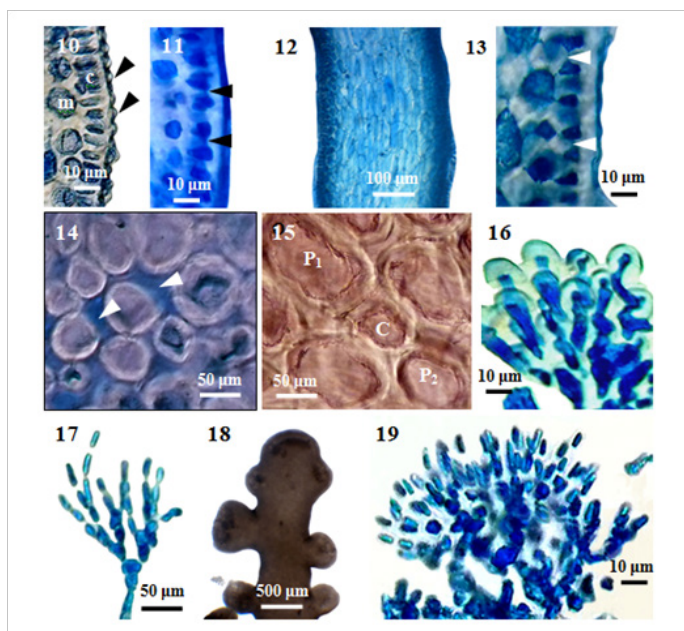
Figures 1-9 Morphology and anatomy of *P. parvipapillata* (CK Tseng) KW Nam. (1) Habit of a plant. (2) Upper part of secondary branches. (3) Apical portion of main axis with secondary branches. (4) Middle portion of main axis. (5) Longitudinal section of apex of a branch, showing apical depression (arrowhead); (6) Discoidal holdfast (arrowhead) and the stolon-like branch (arrow). (7) Surface view of main axis, showing polygonal or rounded cortical cells. (8) Surface view of secondary branch, showing the fusion of cortical cells (arrowhead) through secondary pit connections (arrow). (9) Cross section of main axis, showing compressed frond.

Reproductive Structures: The spermatangial stichidia (Figure 18), formed on the apical portions of main axis; simple, 1025-1525 μm long, and 1125-1850 μm broad; with apical cup-shaped spermatangial pits, 1125-1850 μm broad and contain numerous fertile trichoblasts. Trichoblasts (Figure 19), consist of a repeatedly dichotomously branched; terminate in a single sterile cell, 8-12 μm in diameter.

Specimens examined: Taninthayi Coastal Zone: Hmyawyt (Zayar Aung, 16.iii.2011; MMB 11589; sterile; Myo Min Tun, 27.ix.2012; MMB 11778; sterile), Kanpani (Zayar Aung, 15.iii.2011; MMB 11588; sterile); Deltaic Coastal Zone: No Data; Rakhine Coastal Zone: Ngwe Saung (Minn-Lann) (San Tha Tun and Mya Kyawt Wai, 14.xi.2009; MMB 11678; sterile, ♂).

Distribution: (i) Myanmar distribution- Taninthayi Coastal Zone:

Hmyawyt, Kampani; Deltaic Coastal Zone: No data; Rakhine Coastal Zone: Ngwe Saung (Minn-Lann)(Figure 52). (ii) World-wide.



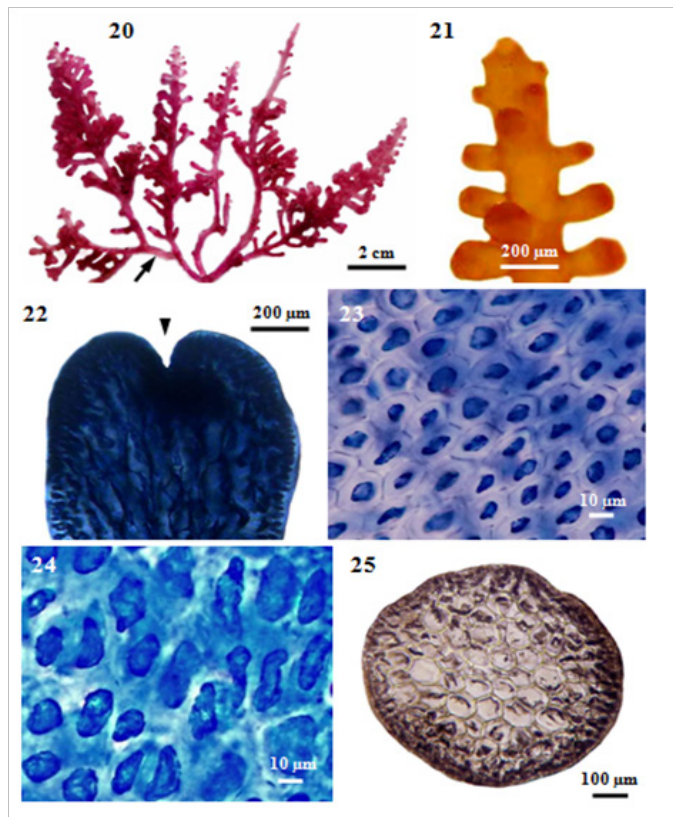
Figures 10-19 Morphology and anatomy of *P. parvipapillata* (C.K.Tseng) K.W. Nam. (10) Cross section of main axis, showing the projections of cortical cells (arrowheads), medulla (m) and palisade-like cortical cells (c). (11) Cross section of main axis, showing secondary pit-connection (arrowheads) and fusion between contiguous superficial cortical cells. (12) Longitudinal section of main branch. (13) Longitudinal section of main axis, showing secondary pit-connection (arrowheads) between contiguous superficial cortical cells. (14) Cross section of main axis, showing intercellular spaces (arrowheads) between medullary cells. (15) Cross section of main axis, showing central (c) and two pericentral (p) cells. (16) Projection of cortical cells in a branch. (17) Trichoblast of sterile plant. (18) Part of a spermatangial (male) plant. (19) Trichoblast of male plant.

Distribution Pacific Ocean: China (Hong Kong), Japan, Philippines, Micronesia, Australia, New Zealand, Hawaiian I., Fiji I.; Indian Ocean- Africa, Kenya, Somalia, Maldives, Yemen; Seychelles, Myanmar (Present study); *Indo-Pacific Region-* Malaysia, Indonesia.⁵ (Figure 53).

Ecological notes: This plants grow on rocks in the lower intertidal zone, and attached to the substratum by discoid holdfast with stolon-like branches. The vegetative or reproductive plants can be found from September to November, till March. Associated algal species are- *Lyngbya sp.*, *Ulva intestinalis*, *Chaetomorpha gracilis*, *Ceramium sp.*, *Roschera glomerulata*, *Centroceras clavulatum*, *Hypnea spinella*, *Gracilaria crassa*, *G. foliifera*, *Laurencia papillosa*, *Gelidium arenarium*, *Polysiphonia subtilissima*. Potential uses: The utilization of this species is unknown. *Palisada intermedia* (Yamada) K.W. Nam (Figures 20-33) Type locality: Enoshima, Kanagawa Prefecture, Japan.¹⁶

Description: Vegetative Structures: (i) External features: Fronds, erect (Figure 20), with several erect axes loosely tufted, up to 5cm high, purplish, rigid, cartilaginous in texture, attached to the substratum by discoid holdfast, and sometimes slightly entangled with coalesced stoloniferous branches, never adhere to paper when drying; main axes, terete with blunt tips terminate in a small depression (Figure 22), 1125-1250µm in diameter; branches (Figure

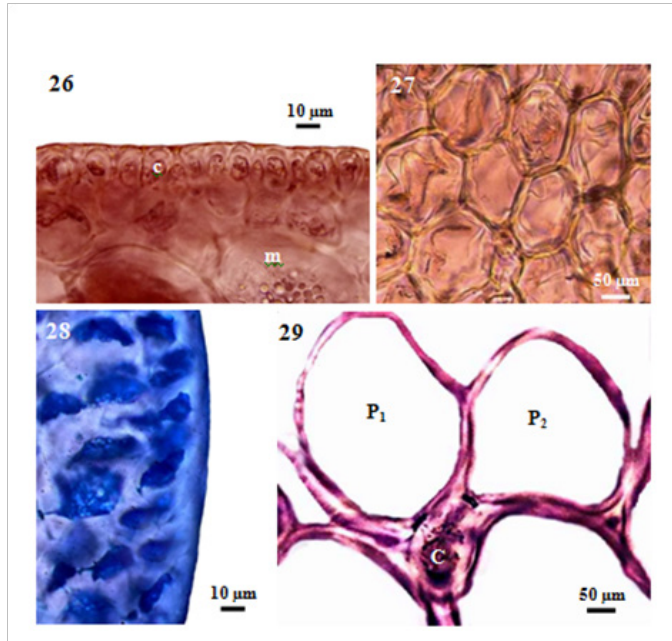
21) cylindrical, opposite or subverticillate, 800-1050µm long and at angles of 10-90°. In a surface view, the cortical cells in the main axis (Figure 23), hexagonal, 8-18µm long and 8-13µm broad, while those in the secondary branch (Figure 24), longitudinally elongated, 10-70µm long and 10-18µm broad.



Figures 20-25 Morphology and anatomy of *P. intermedia* (Yamada) KW Nam. (20) Habit of a plant, showing stoloniferous branches (arrow). (21) Part of a sterile plant. (22) Apex of a branch showing apical depression (arrowhead). (23) Surface view of main branch, showing hexagonal shaped cortical cells. (24) Surface view of secondary branch, showing longitudinally elongated cortical cells. (25) Cross section of main branch.

Internal features: In transverse section, main axes (Figure 25), 800-1150µm diameter in the lower portions, 720-920µm in the middle portions, and then gradually taper to 590-660µm at the tips; cortical cells (Figure 26), not protrude at the apex, form a palisade-like layer, 20-33µm long and 10-18µm broad in the lower to upper portions, without secondary pit connections between these cells; medullary cells (Figure 27), rounded or more or less elongated, 50-190µm diameter in the lower to upper portions, with primary and secondary pit connections (Figure 28), without intercellular spaces between these cells (Figure 27), lenticular thickenings in the walls of the medullary cells absent; two pericentral cells per axial cell (Figure 29); secondary branches, 750-850µm in diameter; cortical cells, not protrude at the apex, form a palisade-like layer, 25-43µm long and 13-25µm broad; medullary cells, rounded or more or less elongated, 50-120µm in diameter; two pericentral cells per axial cell. In longitudinal section, main axes (Figure 30), 1125-1250µm broad; cortical cells (Figure 31), elongated and arranged like palisade cells, 10-48µm long and 15-28µm broad; medullary cells, elongated, 190-330µm long and 70-150µm broad.

Reproductive Structures: Tetrasporangial stichidia (Figures 32-33), formed on the secondary branches; simple or in clusters, cylindrical to clavate, 625-1650µm long and 550-900µm broad. Tetrasporangia, originate from a pericentral cell near the growing apex in the apical depression of a branchlet; spherical, tetrahedrally divided; and 90-100µm in diameter; arranged at right angles to the central axis (Figure 33). In the present study, spermatangial and cystocarpic plants are unknown.



Figures 26-29 Morphology and anatomy of *P. intermedia* (Yamada) KW Nam. (26) Cross section of main axis, showing medulla (m) and palisade-like cortex (c) cells. (27) Cross section of main axis showing the absence of intercellular spaces between medullary cells. (28) Cross section of main axis, showing the absence of secondary pit connections between cortical cells. (29) Cross section of main axis, showing central (c) and two pericentral (p) cells.

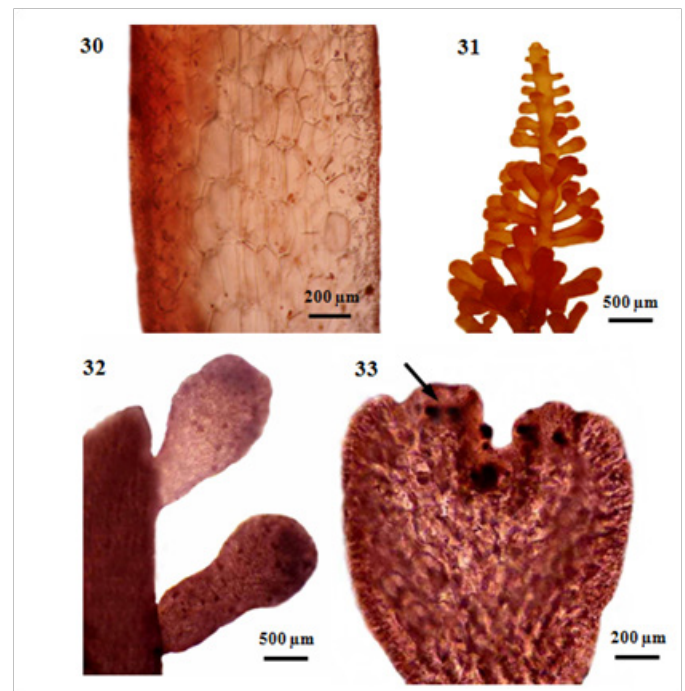
Specimens examined: Taninthayi Coastal Zone: No data; Deltaic Coastal Zone: No data; Rakhine Coastal Zone: Shwe Ya Gyaing (Soe-Htun, 5.x.2002; MMB 07326: sterile,).

Distribution: (i) Myanmar distribution- Taninthayi Coastal Zone: No data; Deltaic Coastal Zone: No data; Rakhine Coastal Zone: Shwe Ya Gyaing^{8,9} (Figure 52). (ii) World-wide distribution- Pacific Ocean-South America: Venezuela, Fiji Is; Atlantic Ocean- Atlantic Islands: Cape Verde Is., Africa: Liberia, Ghana, Turkey (Europe-Asia); Indian Ocean- Kenya, Tanzania, Red Sea, Indian Ocean Islands: Reunion, South-west Asia: Sri Lanka (Ceylon), Myanmar (Present study); Indo-Pacific Region- Asia: China, Taiwan, Japan, South-east Asia: Philippines, Korea.⁵(Figure 53).

Ecological notes: Plants grow on rocks in the lower intertidal to subtidal zones. This species attached to the substratum by means of discoidal holdfast, and sometimes slightly entangled with coalesced stoloniferous branches. The vegetative or reproductive plants can be found in October. Associated algal species are *Laurencia* sp. and *Acanthophora spicifera*.

Potential uses: Laurinterol, laurenisol and isolaurentinol compounds which were of medicinal values, were isolated from the methanolic

extracts from *P. intermedia* (Yamada) K.W. Nam¹⁷, Dembitsky and Tolstikov.¹⁸



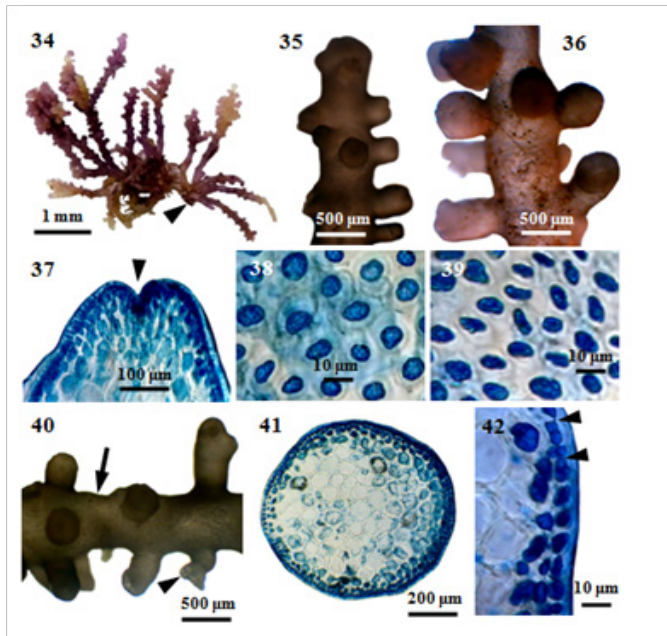
Figures 30-33 Morphology and anatomy of *P. intermedia* (Yamada) Nam. (30) Longitudinal section of main branch. (31) Part of a tetrasporangial plant. (32) Tetrasporangial stichidia (arrow) on main axis. (33) Longitudinal section of tetrasporangial stichidium, showing right angle arrangement of tetrasporangia (arrow).

Palisada perforata (Bory) K.W. Nam (Figures 34-51)

Type locality: “rade de Sainte-Croix” (Santz Cruz de Tenerife), Islas Canarias.¹⁶

Description: Vegetative Structures: (i) External features: Fronds (Figure 34), erect or prostrate, 1.0-3.5 cm high, attached on rocks, grow together with *Gracilaria crassa* in lower intertidal or subtidal zone, erect branches (Figure 35) arise from the stolon-like branch; rigid in texture, and cartilaginous; yellowish (or) greenish to purplish when fresh; main axes arise from discoidal holdfast (Figure 34), 850-1000µm in diameter; 2-11 number of upright axes from the base of branches; secondary branches (Figure 35-36), 500-1150µm long, and 250-1050 µm broad; branching di-tristichous, whorl or alternately dichotomous or irregularly spirally arranged; *corps en cerise* absence. In a surface view, the cortical cells in the main axis (Figure 38), more or less rounded, 8-20µm in diameter; while those in the secondary branch (Figure 39), elongated or more or less rounded, 12-20µm long, and 12-16 µm, rounded, 12-20µm long, and 12-16µm broad in the lower to upper portions, with secondary pit connections (Figure 42) between these cells; medullary cells, more or less rounded, 52-100µm diameter in the lower to upper portions, with intercellular spaces (Figure 43) between these cells, lenticular thickenings in the walls of the medullary cells absent; two pericentral cells peraxial cells (Figure 44). In longitudinal section, main axes (Figure 45), 800-1000µm broad; cortical cells, radially elongated, 16-24µm long, and

8-12µm broad; medullary cells, more or less rounded (or) elongated, 80-210µm long, and 50-100µm broad.



Figures 34-42 Morphology and anatomy of *P. perforata* (Bory) KW Nam. (34) Habit of a plant. (35) Apical portion of a plant with secondary branches. (36) Middle portion of a plant with secondary branches. (37) Apex of a branch, showing apical depression (arrowhead). (38) Surface view of main axis, showing more or less rounded cortical cells. (39) Surface view of secondary branch, showing more or less rounded or elongated cortical cells; (40) Secondary discoid holdfast (arrowhead) with stolon-like branch (arrow). (41) Cross section of main axis. (42) Cross section of main axis, showing secondary pit connections (arrowheads) between cortical cells.

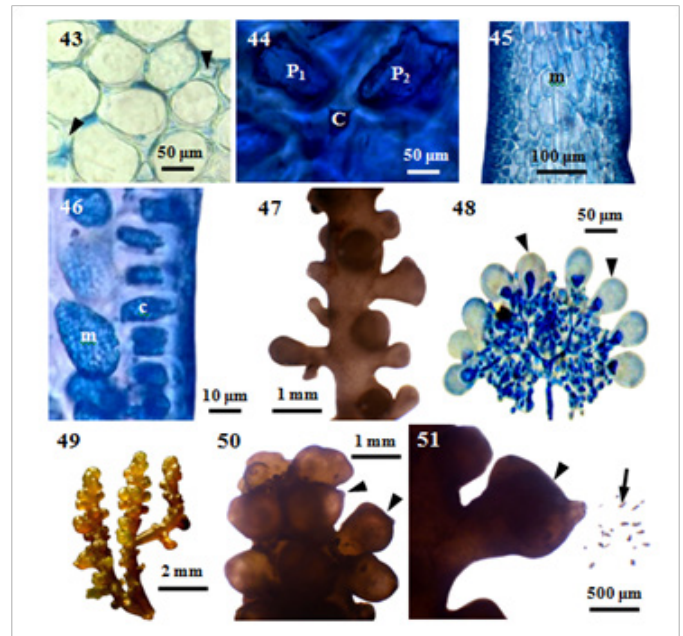
Reproductive Structures

In the carposporic plant (Figure 49-51), cystocarps, formed on the secondary branches; single, occasionally two, ovoid, with wide apical ostiole, 625-1375µm long, and 550-875 µm broad. Plants, dioecious; the spermatangial stichidia (Figure 47), formed on the apical portions of main axis; simple, turbinate, 325-1250µm long, and 625-1625 µm broad; with apical cup-shaped spermatangial pits, 375-1000µm broad and contain numerous fertile trichoblasts. Trichoblasts (Figure 48), consist of a repeatedly dichotomously branched; terminate in a single large sterile vesicular cell, 40-48µm in diameter. The tetrasporangial plants have not been found.

Specimens examined: Taninthayi Coastal Zone

Zar Det Gyi I. (Yin Yin Htay, 2.iv.2013; MMB 111175, 111177: sterile; San Tha Tun, 3.iv.2013; MMB 111176: sterile); Deltaic Coastal Zone: No data; Rakhine Coastal Zone: Kyauk Phyu (San Tha Tun, 25.ii.1987; MMB 07522: sterile); Mazin (San Tha Tun, 17.iii.1987; MMB 07521: sterile); Pho Htaung Gyaing (Soe-Htun, 3.iv.1996; MMB 03283: sterile); Ta-Jet Is. (Han Shein, 31.xii.1971; MMB 01041: sterile); Ngwe Saung (Soe Pa Pa Kyaw, 26.iv.2012; MMB 11683-11688: sterile; Soe Pa Pa Kyaw and May Mon, 26.iv.2012; MMB 11689: sterile; Mya Kyawt Wai, 22.iv.2013; MMB 111173: ♀; MMB 111174: sterile); Zea Gyaing (Ma Thida, 8.iii.1984; MMB 02964: sterile); Kyar Kan (Mya Kyawt Wai *et al.*, 14.xi.2009; MMB 11677: sterile); Mawtin Point (Ma Myint Than and Mu Mu

Aye, 18.ii.1980; MMB 00995, 07519: sterile; Mya Kyawt Wai *et al.*, 17.xi.2009; MMB 11676: sterile, ♂).



Figures 43-51 Morphology and anatomy of *P. perforata* (Bory) KW Nam. (43) Cross section of main axis, showing intercellular spaces (arrowheads) between medullary cells. (44) Cross section of main axis showing central (c) and two pericentral (p) cells. (45) Longitudinal section of main axis, showing elongated medullary cell (m). (46) Longitudinal section of main axis showing medulla (m) and radially elongated cortex (c) cells. (47) Part of a spermatangial plant. (48) A cluster of mature spermatangia, showing sterile vesicular cell (arrowheads). (49) Part of a young carposporic plant. (50) Apical portion of carposporic plant, showing cystocarps (arrowheads). (51) A mature cystocarp (arrowhead) and released carpospores (arrow) from the ostiole.

Distribution

Myanmar distribution-Taninthayi Coastal Zone: Zar Det Gyi I.; Deltaic Coastal Zone: No data; Rakhine Coastal Zone: Kyauk Phyu, Mazin, Pho Htaung Gyaing, Ta-Jet Is., Ngwe Saung, Ngwe Saung (Kyar Kan), Zea Gyaing, Mawtin Point (Figure 52). (ii) World-wide distribution- Pacific Ocean- Fiji, Mexico, Florida, Costa Rica, Trinidad, Cuba, Bahamas, Bermuda, Panama, Caicos Is., Puerto Rico, Colombia, Brazil, Venezuela, France, Martinique, Lesser Antilles, Tanzania, Australia, New Zealand, Hawaiian I.; Atlantic Ocean- Canary I., Spain, Netherland, Tunisia, Adriatic, Malta, Greece, Bulgaria, Turkey, Mediterranean Sea, Egypt, Israel, Jordan, Gabon, Queensland.; Indian Ocean- Sudan, Somalia, Saudi Arabia, Ethiopia, Yemen, Kenya, Mozambique, Seychelles, Oman, Bahrain, India, Sri Lanka, Myanmar (Present study), Andaman I., Nicobar I., Mauritius; Indo-Pacific Region- Indonesia, Vietnam, China (Hong Kong), Taiwan, Korea, Japan, Philippines, Thailand, Malaysia⁵ (Figure 53).

Ecological notes: This plants grow on rocks in the lower intertidal or subtidal zone and attached to the substratum by discoid holdfast with stolon-like branches. The vegetative or reproductive plants can be found from November to December, and February to April. Associated algae of *P. perforata* (Bory) KW Nam are *Lyngbya sp.*, *Schizothrix sp.*, *Ulva intestinalis*, *Cladophora vagabunda*, *Cladophoropsis elegans*, *Gelidium arenarium*, *Hypnea pannosa*, *Gracilaria foliifera*,

Centroceras clavulatum, *Ceramium* sp., *Polysiphonia substilissima* and *Acanthophora spicifera*.

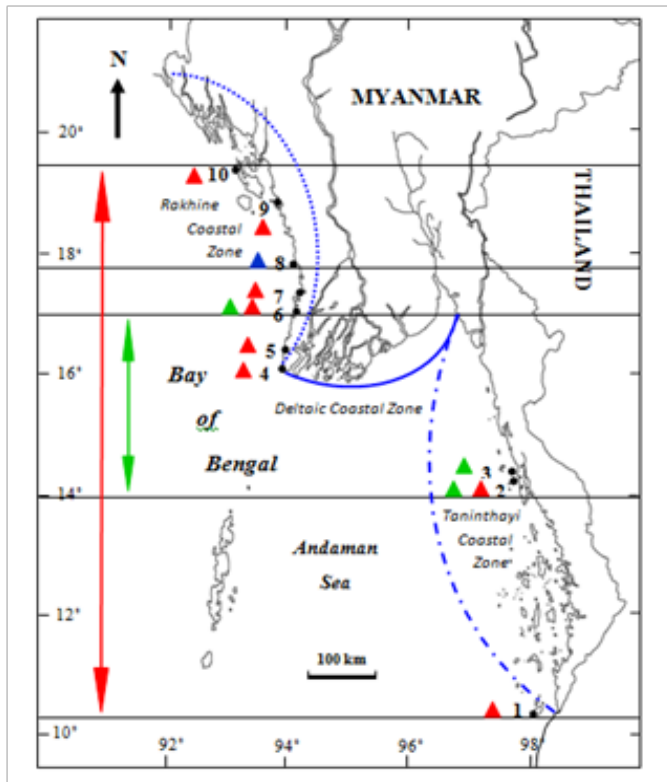


Figure 52 Local distribution of the genus *Palisada* Nam in Myanmar. 1. Zar Det Gyi. 2. Kampani. 3. Hmyawyt. 4. Mawtin Point. 5. Zea Gyaing. 6. Ngwe Saung (Minn Lann). 7. Pho Htaung Gyaing. 8. Shwe Ya Gyaing. 9. Mazin (Ngapali). 10. Kyauk Phyu. Symbols: Distribution range of *Palisada parvipapillata*; Distribution of *P. intermedia*; Distribution range of *P. perforata*; Taninthayi Coastal Zone; Taninthayi Deltaic Coastal Zone; Taninthayi Rakhine Coastal Zone.

Potential Uses: *P. perforata* (Bory) K.W. Nam as *Laurencia papillosa* is used as human food, drugs¹⁹⁻²¹ and in agriculture.²² *L. papillosa* yielded lambda-carrageenan.²³ It contains protein, fat and carbohydrate.²⁴

Discussion

Comparison of the diagnostic characteristics, based on the external appearance and some anatomical features, in the species of the genus *Palisada* occur in Myanmar Coastal Zones, is shown in Table 1. The habit of the frond of vegetative plants is prostrate or decumbent and erect in *Palisada parvipapillata* (CK Tseng) K.W. Nam and *P. perforata* (Bory) KW Nam, whereas frond erect was observed in *P. intermedia* (Yamada) K.W. Nam. *P. perforata* (Bory) K.W. Nam grow on rocks and attached to substrate by discoidal holdfast along with stolon-like branches while *P. parvipapillata* (CK Tseng) KW Nam and *P. intermedia* (Yamada) K.W. Nam, which grow on rocks and attached to substrate by only discoidal holdfast without stoloniferous branches.

Fronds are terete in *P. perforata* (Bory) KW Nam, and *P. intermedia* (Yamada) KW Nam, whereas fronds are compressed in *P. parvipapillata* (C.K. Tseng) KW Nam. The width of main axis is narrow in *P. perforata* (Bory) KW Nam and *P. intermedia* (Yamada)

KW Nam with 0.8-1.2 mm in diameter, but wide in *P. parvipapillata* (CK Tseng) KW Nam with 0.8-2.5mm in broad were observed in this study. Branching type is dichotomous or repeatedly pinnate in *P. parvipapillata* (CK Tseng) KW Nam, but whorled or spirally arranged in *P. perforata* (Bory) KW Nam and opposite or subverticillate in *P. intermedia* (Yamada) KW Nam (Table 1).

P. perforata (Bory) KW Nam has many papillate branchlets and lacks a palisade-like arrangement of cortical cells in transverse section. In contrast, *P. intermedia* (Yamada) KW Nam shows a palisade-like arrangement of the cortical cells. Palisade-like cortical cells are present in *P. parvipapillata* (CK Tseng) KW Nam and *P. intermedia* (Yamada) KW Nam. Secondary longitudinal pit-connection between cortical cells is present in *P. parvipapillata* (C.K. Tseng) KW Nam, and *P. perforata* (Bory) KW Nam. Projecting superficial cortical cells are present in *P. parvipapillata* (CK Tseng) KW Nam. The cortical cells of main axis in longitudinal section are slightly or radially elongated in *P. perforata* (Bory) KW Nam, and arranged like palisade layer in *P. parvipapillata* (CK Tseng) KW Nam and *P. intermedia* (Yamada) KW Nam (Table 1).

The shape of tetrasporangial branchlets is found to be cylindrical to clavate in *P. intermedia* (Yamada) KW Nam. The length of tetrasporangial branchlets are less than 700µm in *P. intermedia* (Yamada) KW Nam. Clustered tetrasporangial branchlets are encountered in *P. intermedia* (Yamada) KW Nam. The sexuality of *P. perforata* (Bory) KW Nam is dioecious in the present study. The ovoid-shaped cystocarps of *P. perforata* (Bory) KW Nam are borne laterally on the branches. The cystocarpic plants of *P. parvipapillata* (CK Tseng) K.W. Nam and *P. intermedia* (Yamada) K.W. Nam are unknown in the present study. The spermatangial stichidia of *P. parvipapillata* (CK Tseng) KW Nam and *P. perforata* (Bory) KW Nam are formed on the apical portions of main axis with apical cup-shaped spermatangial pits. The spermatangial plants are unknown in *P. intermedia* (Yamada) KW Nam (Table 1).

The distributional range of the genus *Palisada* in Myanmar is from the southern limit of Zar Det Gyi I. (Lat. 09° 56' N, Long. 98° 11' E) of the Taninthayi Coastal Zone to the northern limit of Kyauk Phyu (Lat. 19° 26' N, Long. 93° 33' E) of the Rakhine Coastal Zone. *P. parvipapillata* (CK Tseng) KW Nam distributes from the southern limit of Kampani (Lat. 14° 02' N, Long. 98° 04' E) to the northern limit of Ngwe Saung (Minn Lann)(Lat. 16° 52' N, Long. 94° 22' E) and *P. perforata* (Bory) KW Nam predominates from the southern limit of Zar Det Gyi I. (Lat. 09° 56' N, Long. 98° 11' E) to the northern limit of Kyauk Phyu (Lat. 19° 26' N, Long. 93° 33' E). However, *P. intermedia* (Yamada) KW Nam occurs only in Shwe Ya Gyaing (Lat. 17°34'N, Long. 94°34' E)(Figure 52)(Table 2). Generally, *P. intermedia* (Yamada) KW Nam occur only in the Rakhine Coastal Zone, and *P. parvipapillata* (CK Tseng) KW Nam and *P. perforata* (Bory) KW Nam distribute along both the Rakhine and Taninthayi Coastal Zones. There are no records of specimens collected from the Deltaic Coastal Zone.

The world-wide distributional range of the three species of the genus *Palisada* normally occur in Myanmar is from New Zealand as southernmost recorded limit in the Pacific Ocean to Netherlands as northernmost recorded limit in the Atlantic Ocean. In general, the three species, viz., *P. parvipapillata* (CK Tseng) KW Nam, *P. perforata* (Bory) KW Nam and *P. intermedia* (Yamada) KW Nam distribute throughout the tropical to temperate coastal areas. With

regard to horizontal phytogeographical distribution, the plants of *P. intermedia* and *P. perforata* commonly occur especially from tropical to temperate coastal areas in all oceans, while *P. parvipapillata* remarkably predominates along the Indian Ocean and Pacific Ocean (Figure 53). Moreover, the vertical phytogeographical distribution ranges of *P. perforata* (Bory) KW Nam and *P. parvipapillata* (CK

Tseng) KW Nam are wide, from New Zealand as southernmost limit in the Pacific Ocean to Netherlands in the Atlantic Ocean and Japan in the Pacific Ocean as of northernmost limit, whereas that of *P. intermedia* (Yamada) KW Nam are remarkably narrow, from Reunion of Indian Ocean as southernmost limit to Turkey of the Atlantic Ocean as of northernmost limit.

Table 1 Comparison of the taxonomic features in *Palisada* spp. from Myanmar

Sr. No.	Characters	Species		
		<i>Palisada parvipapillata</i> (CK Tseng) KW Nam	<i>Palisada intermedia</i> (Yamada) KW Nam	<i>Palisada perforata</i> (Bory) KW Nam
Vegetative Structures				
1	Habit of plants with type of holdfast	Decumbent or prostrate, attached by means of discoid holdfast	Erect, attached by means of discoid holdfast with stolon-like branches	Erect or prostrate, attached by means of discoid holdfast with stolon-like branches
2	Height or diameter of plants	2-3cm	Up to 5cm	1.0-3.5cm
3	Shape of main axis in cross-section	Compressed	Terete	Terete
4	Size of main axis	0.8-2mm in broad	0.6-1.2mm in diameter	0.8-1.0mm diam.
5	Branching type	Pinnately or alternately branched	Opposite or subverticillate	Distichous to tristichous
6	Palisade-like cortical cells	Present	Present	Absent
7	Secondary longitudinal pit-connection between cortical cells	Present	Absent	Present
8	Projecting superficial cortical cells	Present	Absent	Absent
9	Shape and size of cortical cells in surface view	Elongated, palisade-like cells and 20-48µm long, 12-20µm in broad	Hexagonal and 8-18 µm long, 8-13µm in broad	More or less rounded or rectangular and 12-20µm long, 12-16 µm wide
10	Shape and size of medullary cells in cross section	More or less rounded or elongated and 44-140µm long, 28-88µm in broad	Rounded or more or less elongated and 50-190 µm diameter	More or less rounded and 52-100µm in broad
11	Formation style and arrangement tetrasporangia	-	Simple or in clusters and perpendicular	-
12	Type and size of tetrasporangia	-	Tetrahedrally divided and 90-100µm in diameter	-
Reproductive structures				
13	Shape and size of tetrasporangial brabches	-	Cylindrical to clavate and 625-1650µm long, 550-900µm in broad	-
14	Shape and size of spermatangial pit	Cup-shaped and 1025-1525µm long, and 1125-1850µm broad	-	Turbinate and 325-1250µm long, 625-1625µm in broad
15	Shape and size of cystocarp	-	-	Ovoid and 625-1375µm long, 550-875µm in broad

Table 2 The distributional range of the genus *Palisada* Nam along the three Coastal Regions in Myanmar

Sr. No.	Species	Coastal Regions					
		TCZ		DCZ		RCZ	
		From	To	From	To	From	To
1.	<i>Palisada parvipapillata</i> (CK Tseng) KW Nam	Kampani (Lat. 14° 02'N, Long. 98° 04'E)	Hmyaw-yit (Lat. 14° 04'N, Long. 98° 04'E)	No data	No data	Ngwe Saung (Minn Lann) (Lat. 16° 52'N, Long. 94° 22'E)	-
2.	<i>P. intermedia</i> (Yamada) KW Nam	No data	No data	No data	No data	Shwe Ya Gyaing (Lat. 17° 34' N, Long. 94° 34' E)	-
3.	<i>P. perforata</i> (Bory) KW Nam	Zar Det Gyi (Lat. 09° 56'N, Long. 98° 11'E)	No Data	No Data	No Data	Mawtin Point (Lat. 15° 58'N, Long. 94° 14'E)	Kyauk Phyu (Lat. 19° 26'N, Long. 93° 33'E)

The distributional range of the genus *Palisada* Nam along the three Coastal Regions in Myanmar.

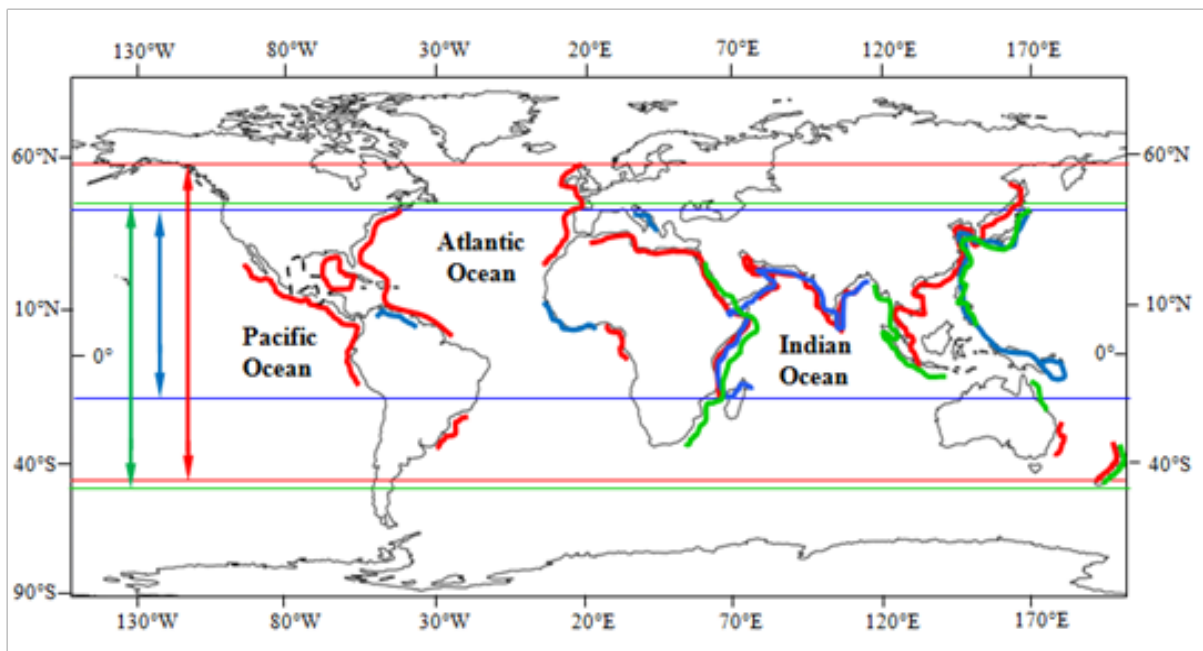


Figure 53 Phytogeographical distribution of the genus *Palisada* Nam. Symbols: Potential distribution range and southernmost and northernmost recorded limits of *Palisada parvipapillata*; Potential distribution range and southernmost and northernmost recorded limits of *P. intermedia*, and Potential distribution range and southernmost and northernmost recorded limits of *P. perforata*.

In general, the result of the study on the phylogeographical distribution of the three species of the genus *Palisada*, namely *P. parvipapillata* (C.K. Tseng) KW Nam, *P. perforata* (Bory) KW Nam and *P. intermedia* (Yamada) KW Nam clearly supports a potential distribution of these three species in Myanmar, being one of the countries in the Indian Ocean Region (IOR).

Conclusion

The present study confirmed the occurrence of three species of *Palisada*, namely *Palisada parvipapillata* (CK Tseng) KW Nam, *P. intermedia* (Yamada) KW Nam and *P. perforata* (Bory) KW Nam, in Taninthayi and Rakhine Coastal Zones of Myanmar. All these 3 species are newly recorded from Myanmar waters. This study reveals that fronds are terete in *P. perforata* (Bory) KW Nam, and *P. intermedia* (Yamada) KW Nam, whereas fronds are compressed in *P. parvipapillata* (CK Tseng) KW Nam. The width of main axis is narrow in *P. perforata* (Bory) KW Nam and *P. intermedia* (Yamada) KW Nam, but wide in *P. parvipapillata* (CK Tseng) KW Nam. Branching is dichotomous or repeatedly pinnate in *P. parvipapillata* (CK Tseng) KW Nam, but whorled or spirally arranged in *P. perforata* (Bory) KW Nam and opposite or subverticillate in *P. intermedia* (Yamada) KW Nam. In the present study, the only specimen collected from Shwe Ya Gyaing was used for identification of *P. intermedia* (Yamada) KW Nam. Further studies on the spermatangial and carpogonial plants of *P. intermedia* (Yamada) KW Nam are necessary to be done. Moreover, studies on tetrasporangial and cystocarpic plants of *P. parvipapillata* (CK Tseng) KW Nam and tetrasporangial plants of *P. perforata* (Bory) KW Nam are also needed to add some new outcomes for confirmation of the species concerned. The following characteristics are generally used to identify each species of *Palisada* from Myanmar.

Key to the species of *Palisada* from Myanmar

1. Fronds distinctly compressed and prostrate or decumbent, branching pinnately or alternately.....*Palisada parvipapillata*
2. Fronds terete and erect or prostrate, branching not as above.....2
- 2a. Branching opposite or subverticillate.....*P. intermedia*
- 2b. Branching di-tristichous, whorl or alternately dichotomous or irregularly spirally arranged.....*P. perforate*.

This study shows *P. parvipapillata* CK Tseng (KW Nam) and *P. perforata* (Bory) KW Nam commonly predominate along both the Taninthayi and Rakhine Coastal Zones whereas *P. intermedia* (Yamada) KW Nam uniquely occur in the Rakhine Coastal Zone. Further studies on the distribution of the genus *Palisada* along the 3 Coastal Zones of Myanmar are still needed. With regard to the world-wide distribution of the plants of *Palisada*, *P. intermedia* (Yamada) KW Nam and *P. perforata* (Bory) KW Nam commonly distribute in all tropical and temperate oceans while *P. parvipapillata* CK Tseng (KW Nam) remarkably occurs predominantly in the Indian and Pacific Oceans. The local distribution of the species of *Palisada* from Myanmar is closely related to that of the world-wide distribution of the species of *Palisada* from the Indian and Pacific Oceans.

Acknowledgements

We are indebted to Dr. Aung Myat Kyaw Sein, Acting-Rector, and Dr. Mie Mie Sein and Dr. San San Aye, Pro-Rectors, Mawlamyine University, for their supports and encouragement in this study. We are

grateful to Dr. San Tha Tun, Professor, Head of Department of Marine Science, Mawlamyine University, for his generous supports and useful suggestions, during this research works done in the Phycological Research Laboratory. We are thankful to the late Dr. Min Thein, Director (Retd.) Microalga Biotechnology Department, Myanmar Pharmaceutical Factory (MPF), Yangon, Myanmar for his academic guidance and literature provided. Our special thanks go to Dr. Mya Kyawt Wai, Dr Jar San and Dr. Sein Moh Moh Khaing, Department of Marine Science, Mawlamyine University for their valuable assistance throughout the course of this study. We would like to thank U Zaw Lin Tun, Staff of Marine Science Association, Myanmar (MSAM) for his helpful assistance in the preparation of the manuscript.

Conflict of interests

Author declares that there is no conflict of interest.

References

1. Saito Y. Studies on Japanese species of *Laurencia*, with special reference to their comparative morphology. *Mem FacFish, Hokkaido Univ.* 1967. 81 p.
2. Nam KW, Maggs CA, Garbary DJ. Resurrection of the genus *Osmundea* with an emendation of the generic delineation of *Laurencia* (Ceramiales, Rhodophyta). *Phycologia.* 1994;33(5):384–395.
3. Nam KW. Validation of the generic name *Palisada* (Rhodomelaceae, Rhodophyta). *Korean Journal of Phycology.* 2007;22: 53–55.
4. Serio D, Cormaci M, Furnari G, et al. First record of *Palisada maris-rubri* (Ceramiales, Rhodophyta) from the Mediterranean Sea along with three proposed transfers to the genus *Palisada*. *Phycological Research.* 2010;58:9–16.
5. Guiry MD, Guiry GM. *Algae Base*. World-wide electronic publication, National University of Ireland, Galway. 2018.
6. Kyi Win. A classified list of the seaweeds of Myanmar. *Proceedings of the Myanmar Research Congress.* 1972;25–29.
7. Kyaw Soe, Kyi Win. Seaweeds for utilization. *University Translation and Publication Department. Myanmar.* 1977;2(168): 502.
8. Soe-Htun U, Mu Mu Aye, Soe Pa Pa Kyaw. Distribution and potential uses of marine algae found along the three Coastal Regions of Myanmar. Department of Marine Science. Mawlamyine University. *Tech. Rep.* 2007; 190 p.
9. Soe-Htun U, Mya Kyawt Wai, Thida Nyunt. Notes on some marine benthic red algae of Gwa Coastal Areas I: Rhodophyta (Goniotrichales, Styloematales, Erythropeltidales, Bangiales, Acrochaetales, Nemaliales, Corallinales, Gelidiales and Halymeniales). *Jour. Myan. Acad. Arts & Sc.* 2009;7(5):215–142.
10. Zayar Aung. *Study on the marine benthic red algae of Kampani coastal areas*. Unpublished Master of Science Thesis. Department of Marine Science. Mawlamyine University. 2012.
11. Myo Min Tun. *The floras and ecology of macrobenthic marine algae in Kampani coastal areas*. Unpublished Master of Research Thesis. Department of Marine Science. Mawlamyine University. 2013.
12. Soe Pa PaKyaw. Systematics of *Laurencia* complex (Ceramiales, Rhodophyta) of Myanmar. Unpublished PhD Dissertation. Department of Marine Science. Mawlamyine University. 2014.
13. Saito Y. The algal genus *Laurencia* from the Hawaiian Islands, the Philippine Islands and adjacent areas. *Pacific Science.* 1969;23(2):148–160.

14. Cordero PA. Studies on Philippine marine red algae. Special. Publ. Seto Marine Biol. Lab., *Series IV: Contr Seto Mar. Biol.* 1977;4:1–258.
15. Silva PC, Menez EG, Moe RL. Catalogue of the benthic marine algae of the Philippines. *Smithsonian Contributions to Marine Science.* 1987;27:1–179.
16. Silva PC, Basson PW, Moe RL. Catalogue of the benthic marine algae of the Indian Ocean. *Univ Calif Publ Bot.* 1996; 9:1259.
17. Chapman VJ. *Seaweeds in pharmaceuticals and medicine: A review.* In: Hoppe HA, Levring T, Tanaka Y, editors. Marine algae in pharmaceutical science. *Walter de Gruyter.* 1979; p. 139–147.
18. Dembitsky VM, Tolstikov GA. Natural halogenated sesquiterpenes from marine organisms. *Chemistry for Sustainable Development.* 2004;12:1–12.
19. Levring T, Hoppe HA, Schmid OJ. Marine algae: A survey of research and utilization. *Botanica Marina.* 1969;1:1–421.
20. Trono GC Jr. 1977. Guide to Philippine flora and fauna. Seaweeds Vol. I. Economically important seaweed. *Department of Natural Resources.* 1977; 75 p.
21. Soe Htun U, Hla Tint, San Tha Tun. A review on the seaweed research in Myanmar. Department of Marine Science. Mawlamyine University. *Technical Report.* 1997; 27p.
22. Zemke White WL, Ohno M. World seaweed utilization: An end-of-century summary. *Journal of Applied Phycology.* 1999; 11(4):369–376.
23. Zablackis EK, Mc Dermid KJ. Agar from a species of *Laurencia*, a red seaweed from the Hawaiian Islands. In: Abbott IA editors, *Taxonomy of economic seaweeds with reference to some Pacific and Caribbean species.* California Sea Grant College Program, University of California. 1988;2:253–256.
24. Khalil AN, El-Tawil BAH. Phytochemical studies on marine algae from Jeddah, Red Sea. *Bull Fac Sci, Jeddah.* 1982;6:49–60.