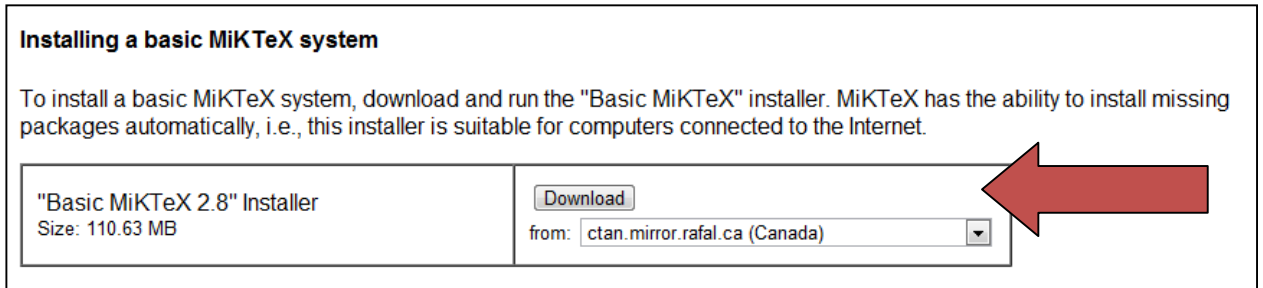


Download and Installation Guide For MiKTeX 2.8 and TeXnicCenter

This document provides detailed instructions on downloading and installing MiKTeX and TeXnicCenter, the two recommended software packages needed to create LaTeX documents. Using a high-speed Internet connection is recommended, as the installations files are large.

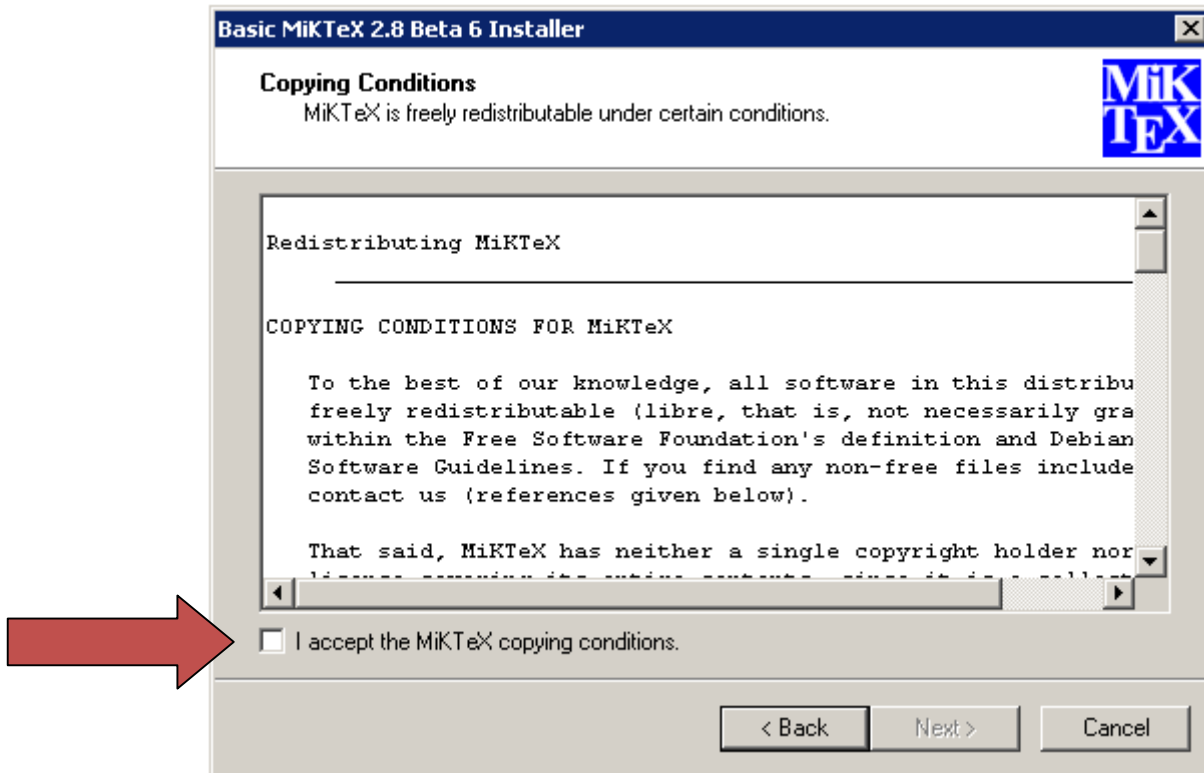
Part 1: Download and Install MiKTeX 2.8

1. Go to <http://www.miktex.org/2.8/setup> and click Download under “Installing a basic MiKTeX system.”

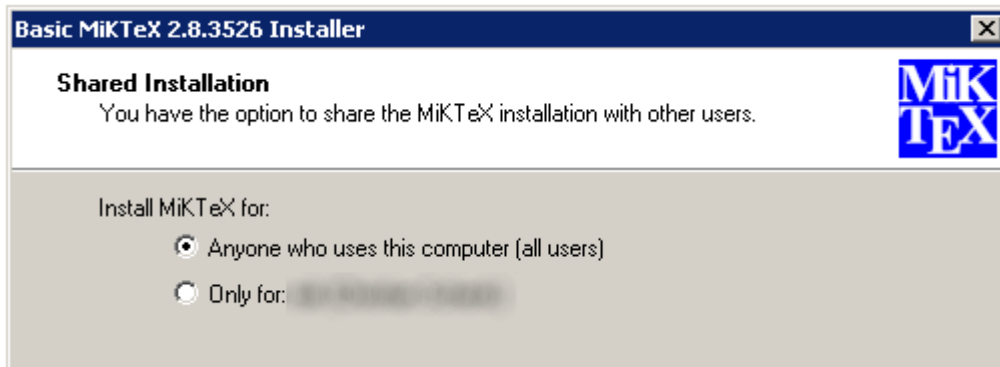


You can download from any of the mirrors in the list. The file is 110 MB, which is quite large, so it may take some time to download.

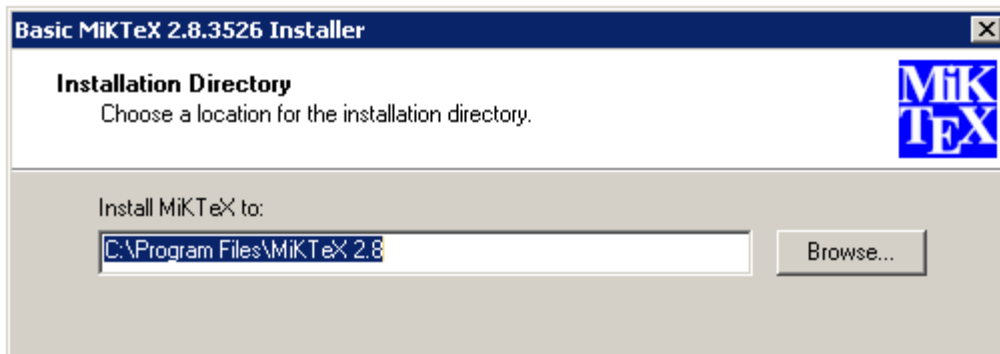
2. Choose “Save File” when the popup window opens.
3. Once the download is complete, double-click on the download file: **basic-miktex-2.8.3761.exe**.
4. Click on the box to accept the MiKTeX copying conditions. Then click **Next**.



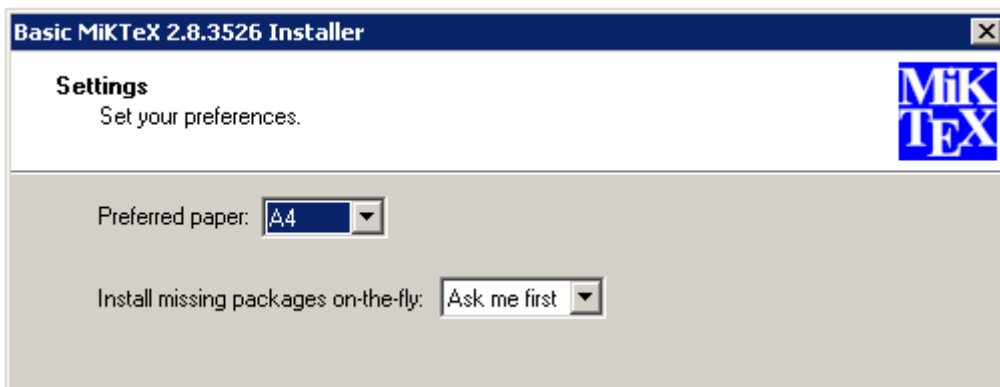
5. Click **Anyone who uses this computer (all users)**, then click **Next**.



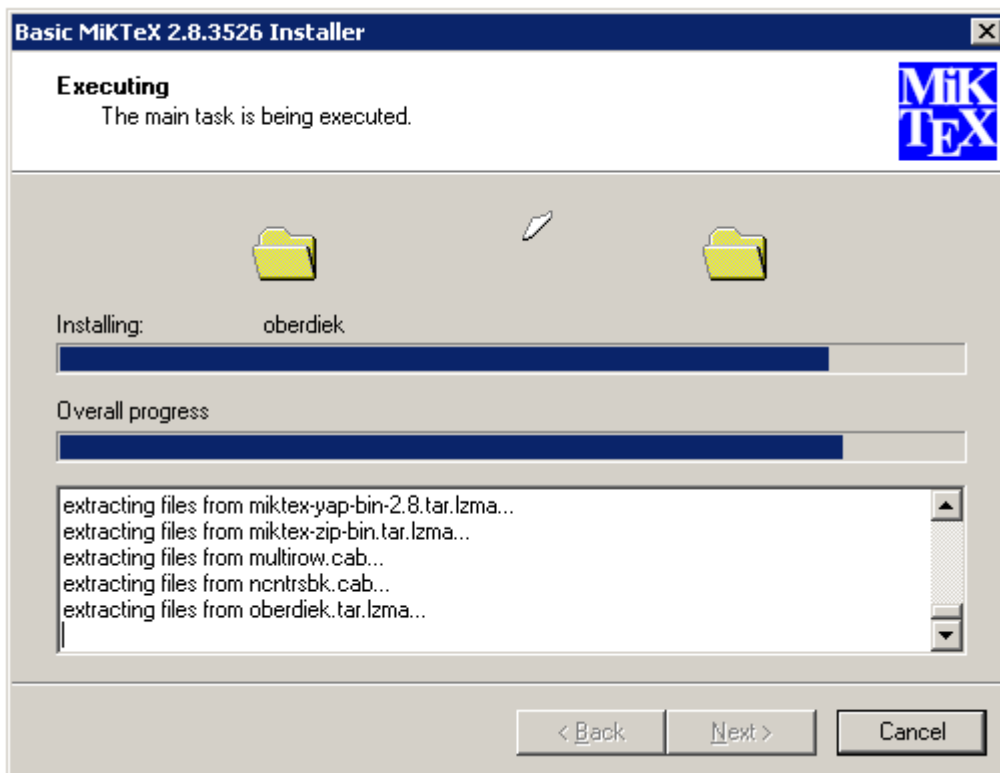
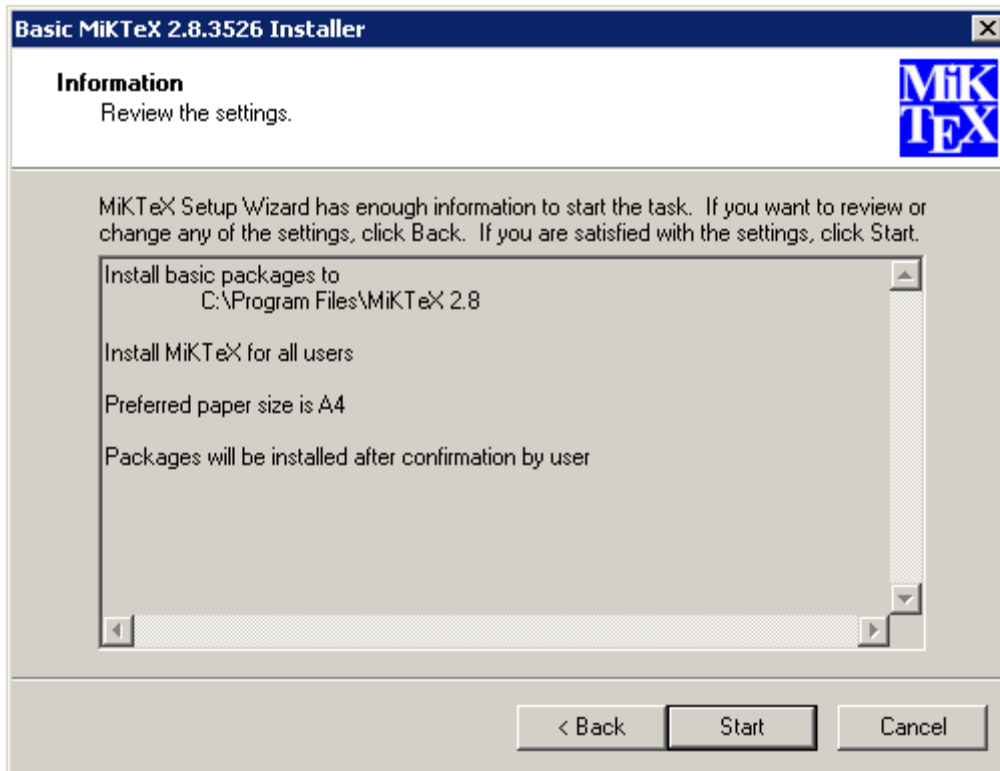
6. Accept the default directory, then click **Next**.



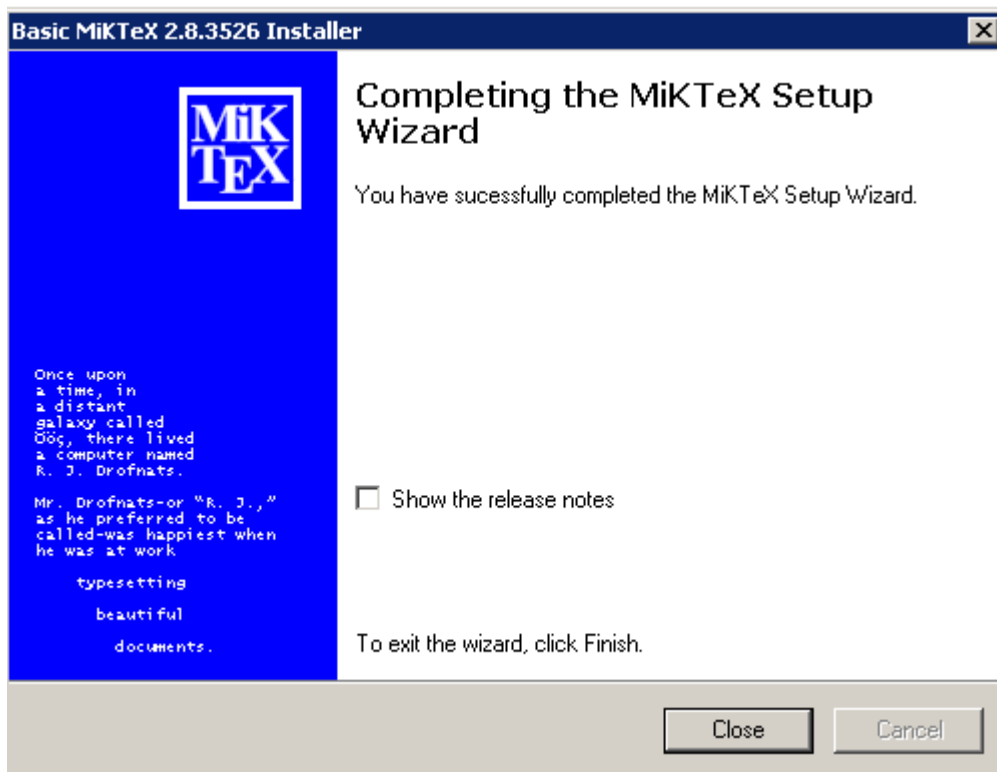
7. Change the Preferred Paper from **A4** to **Letter**. Then click **Next**.



8. Click **Start** to begin the install process.

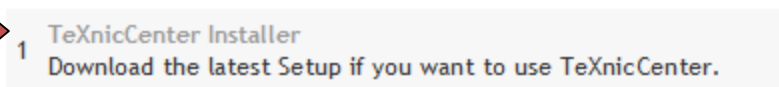
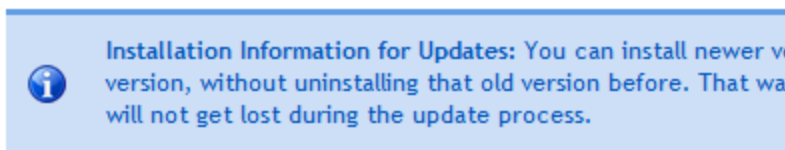


9. Click **Close** once the installation is complete.

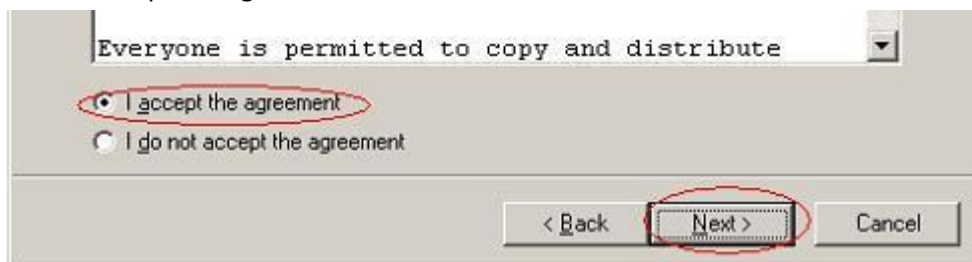


Part 2: Download and Install TeXnicCenter

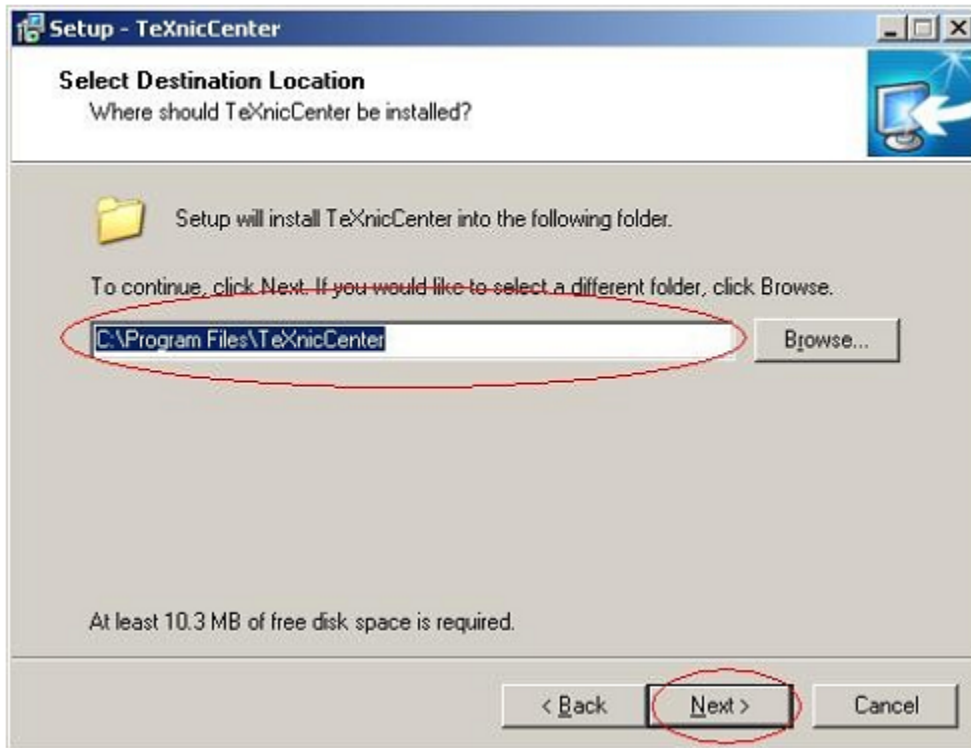
1. Go to <http://www.texniccenter.org/resources/downloads/29> and click "TeXnicCenter Installer."



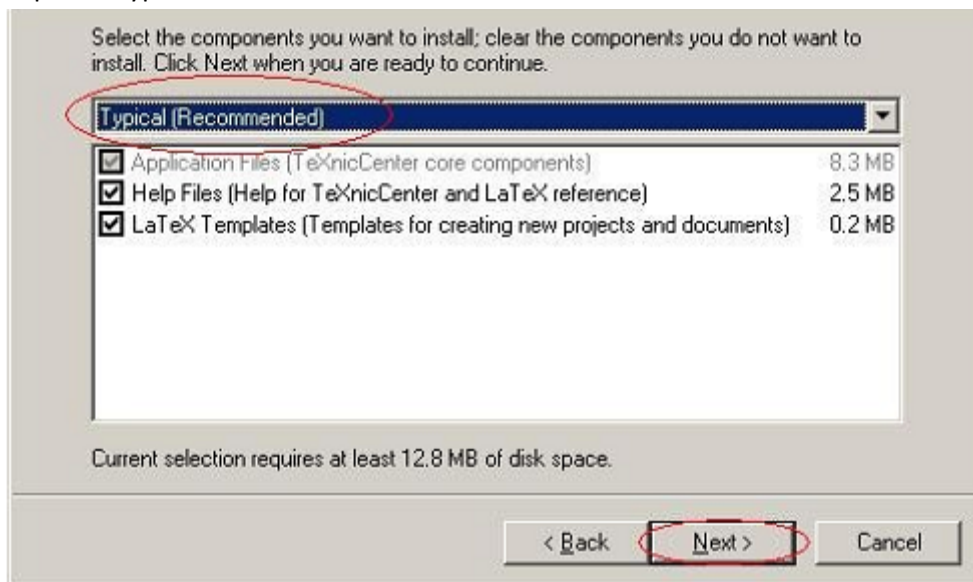
2. Choose "Save File" when the popup window opens.
3. Once the download is complete, double-click on the download file: **TXCSetup_1StableRC1**.
4. On the Setup Wizard window, click **Next**.
5. Choose "I accept the agreement" and click **Next**.



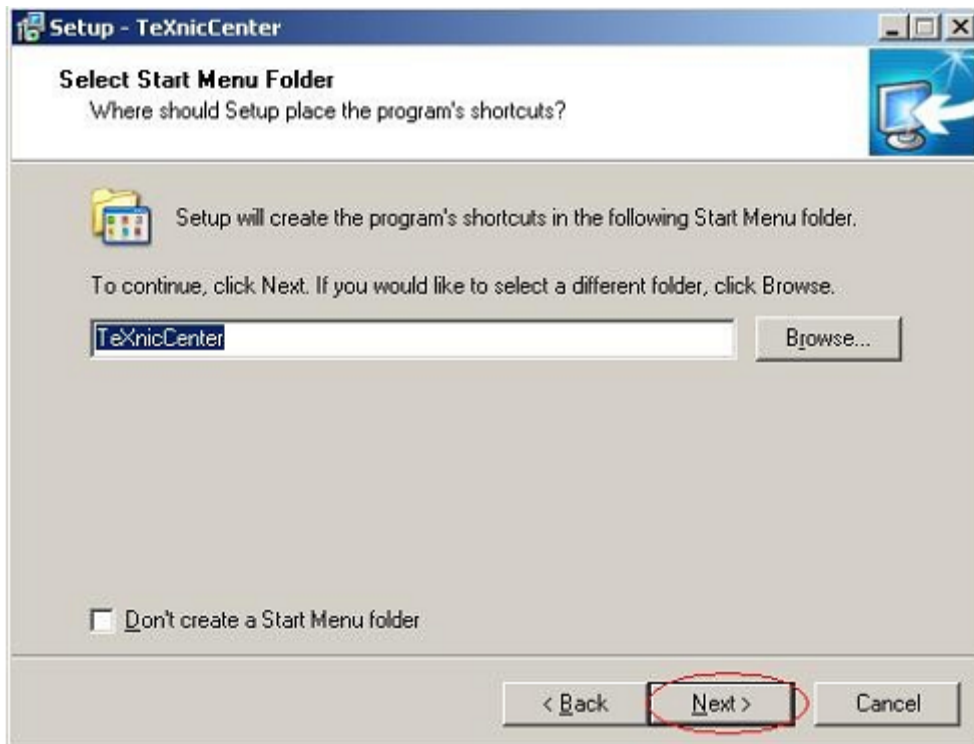
6. Click **Next** to accept the default location.



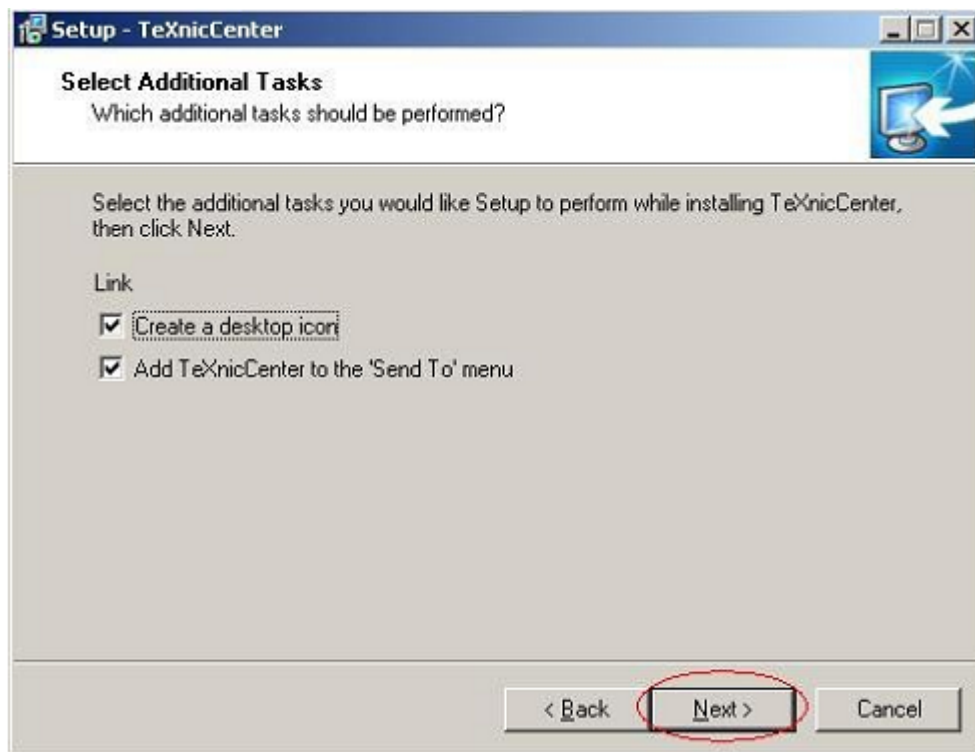
7. Keep the "Typical Installation" and click **Next**.



8. Click **Next**.



9. Click **Next**.



10. Press **Install** to begin the installation.

11. Wait for the setup to finish, then click **Finish**.



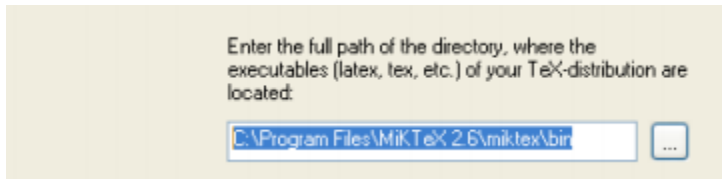
Part 3: Configure TeXnicCenter

1. Launch TeXnicCenter and wait for the configuration wizard to appear. Click **Next**.

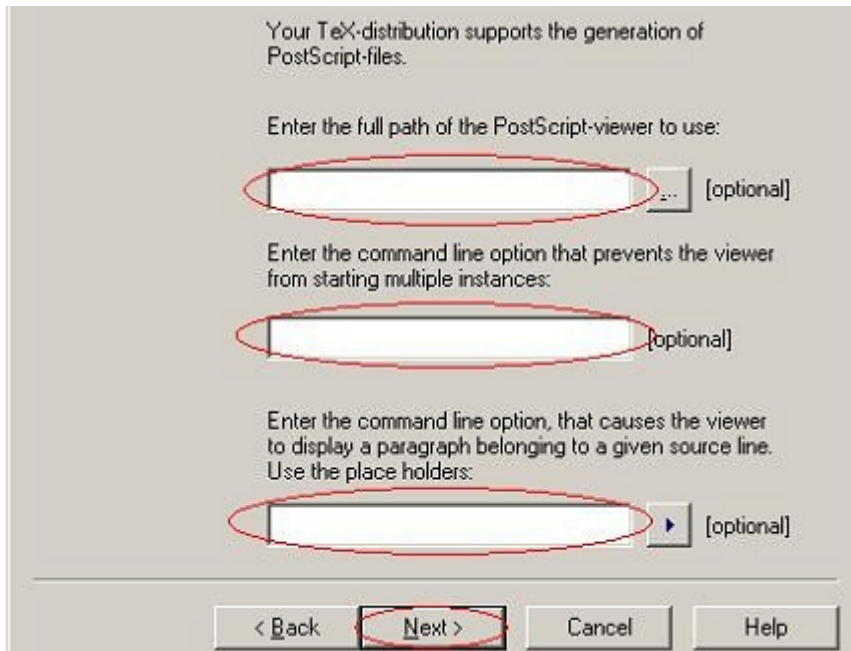


2. Select the path of your MiKTeX binary files. The default path is:

C:\Program Files\MiKTeX 2.8\miktex\bin



3. Leave the next fields blank.



4. Click **Finish**.

