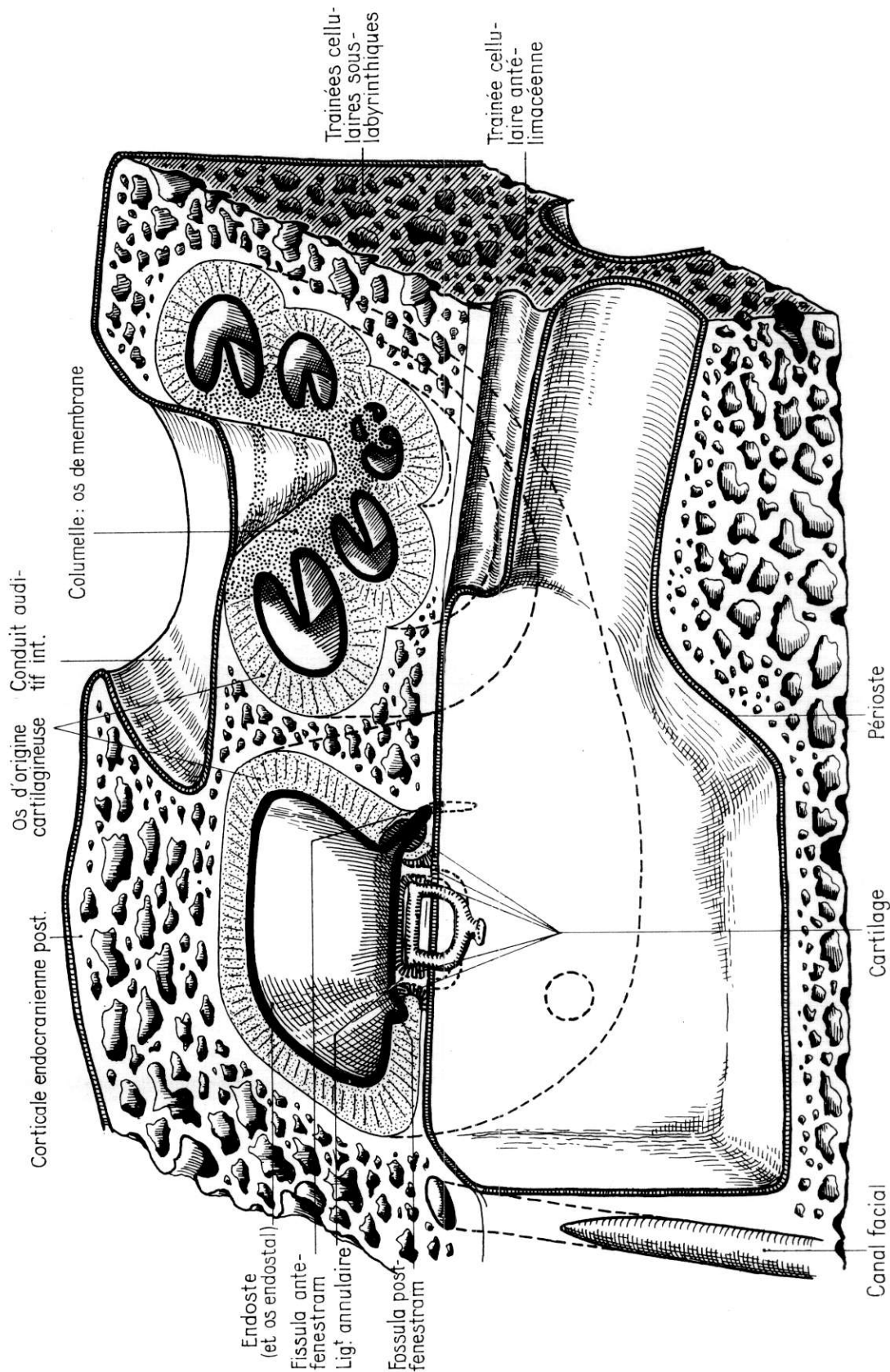
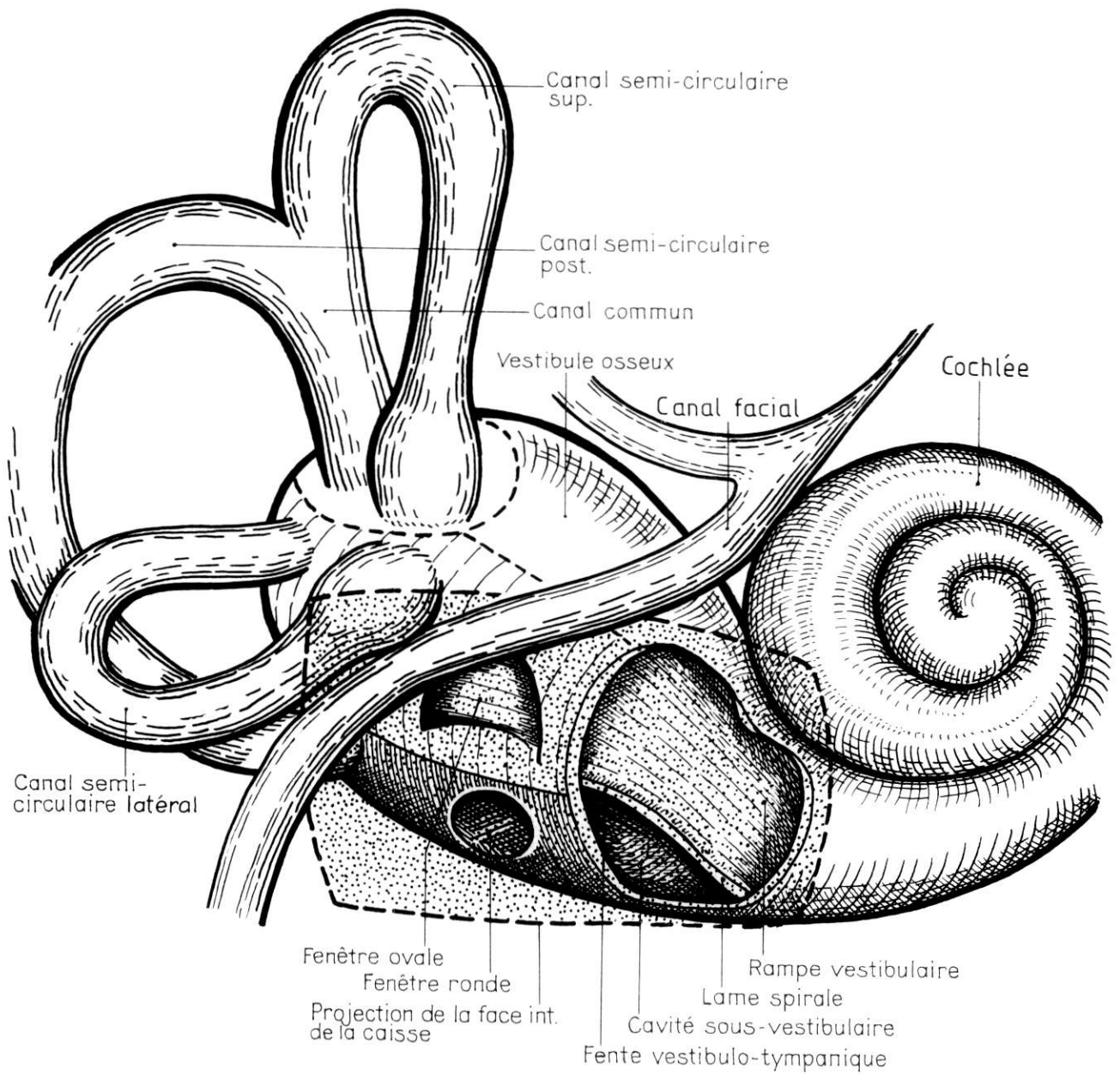


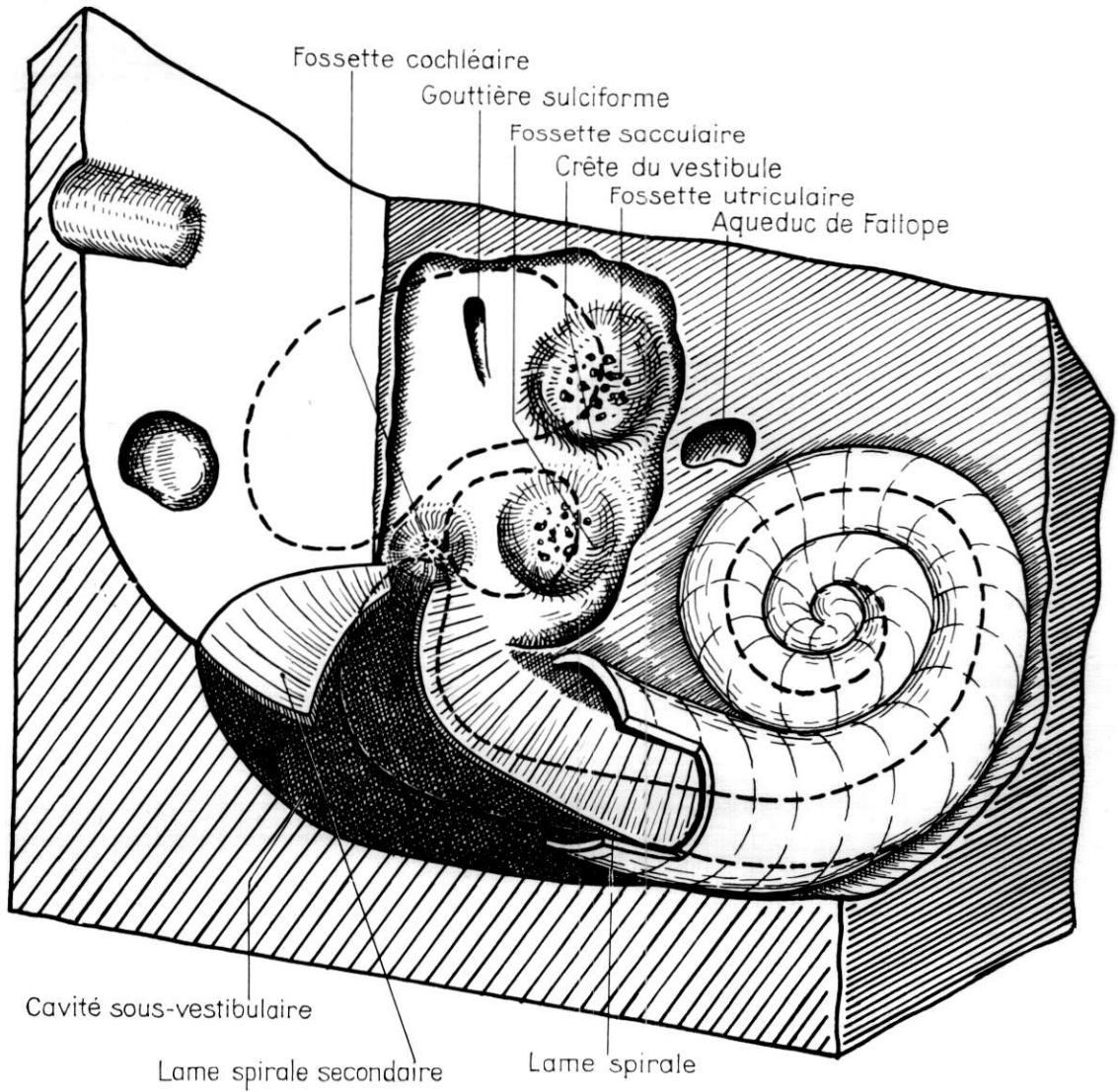
FORME ET SITUATION.



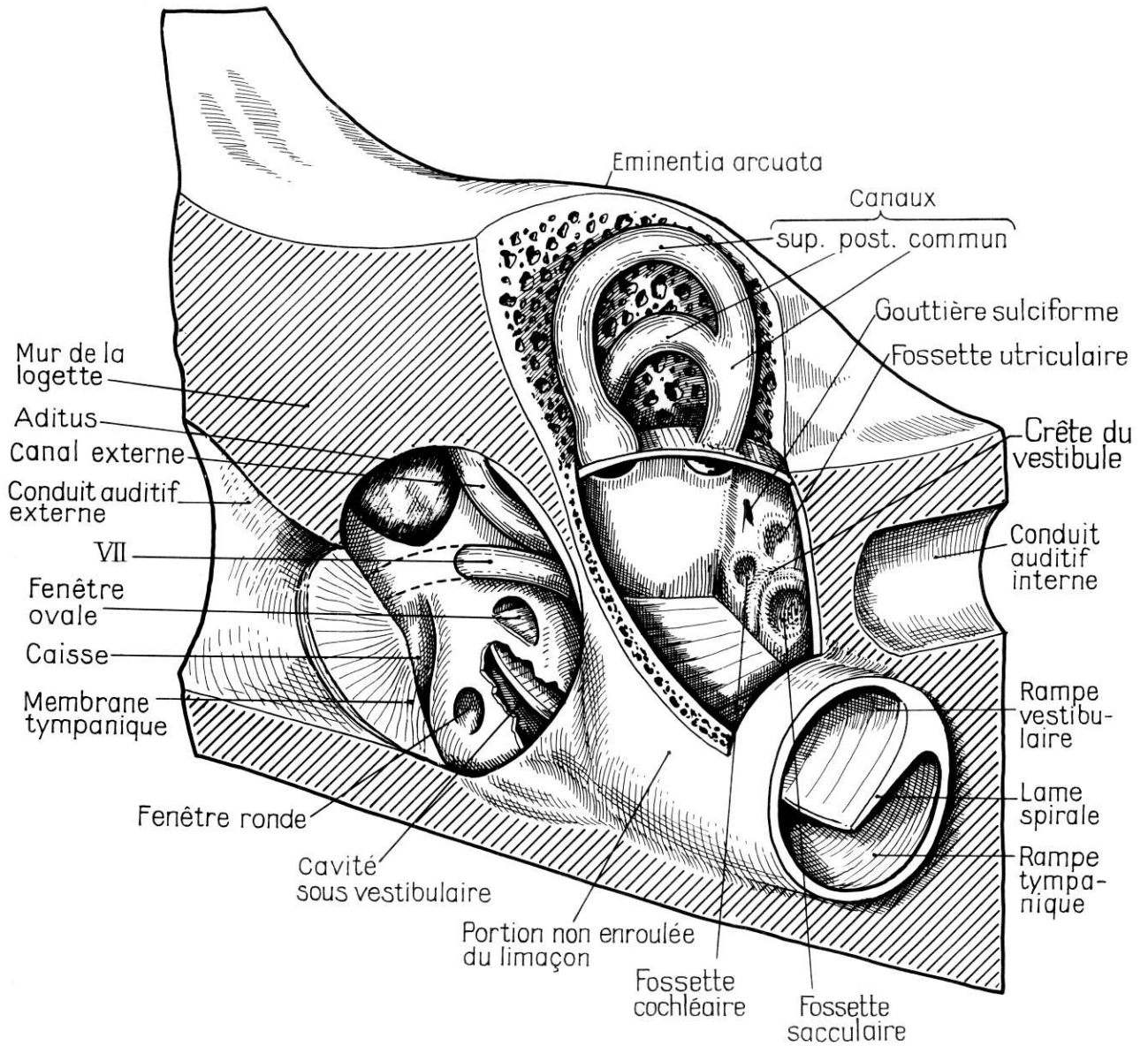
STRUCTURE DE LA CAPSULE OTIQUE.



**VESTIBULE OSSEUX.** — Paroi externe.

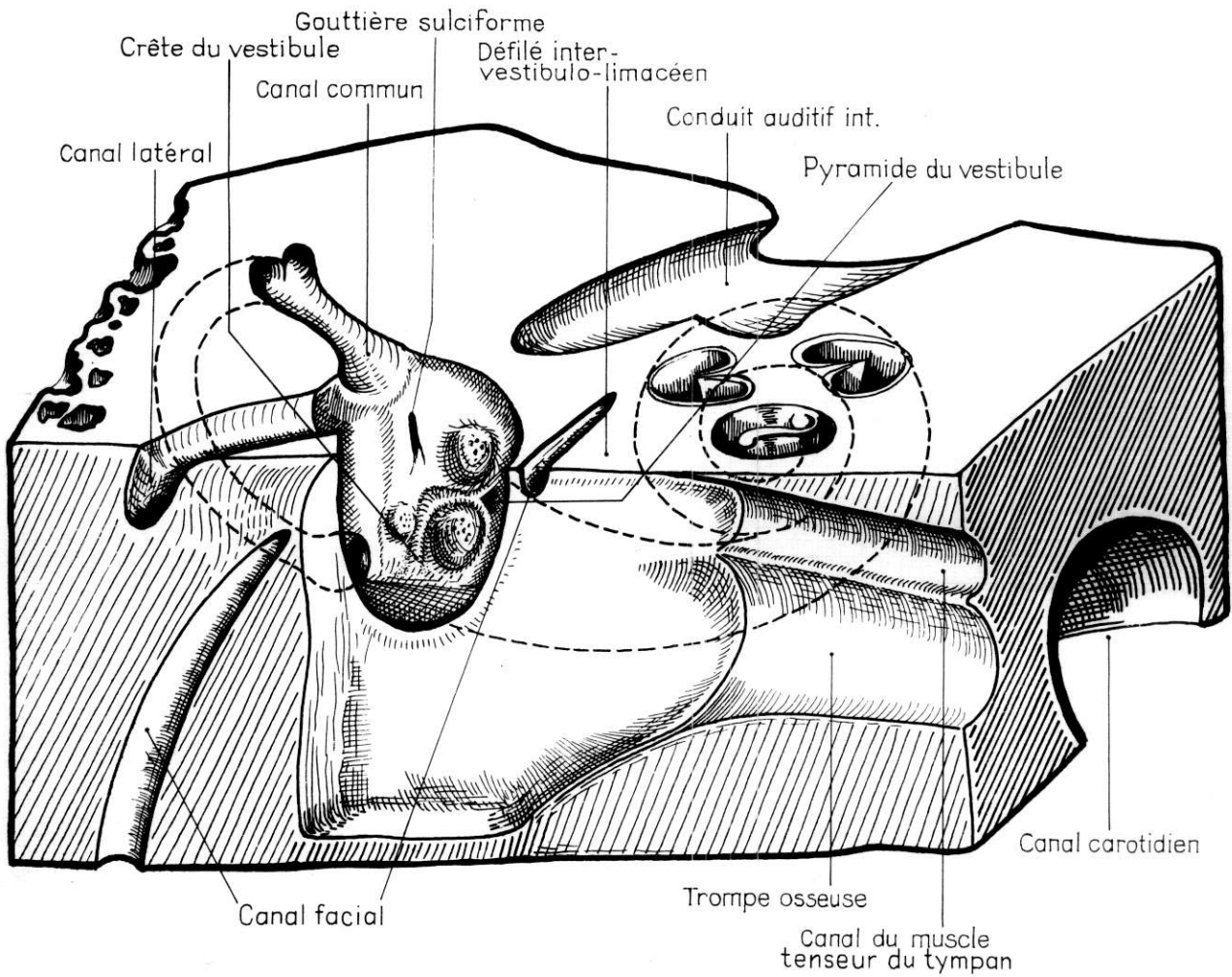


**VESTIBULE OSSEUX.** — Parois interne et postérieure.

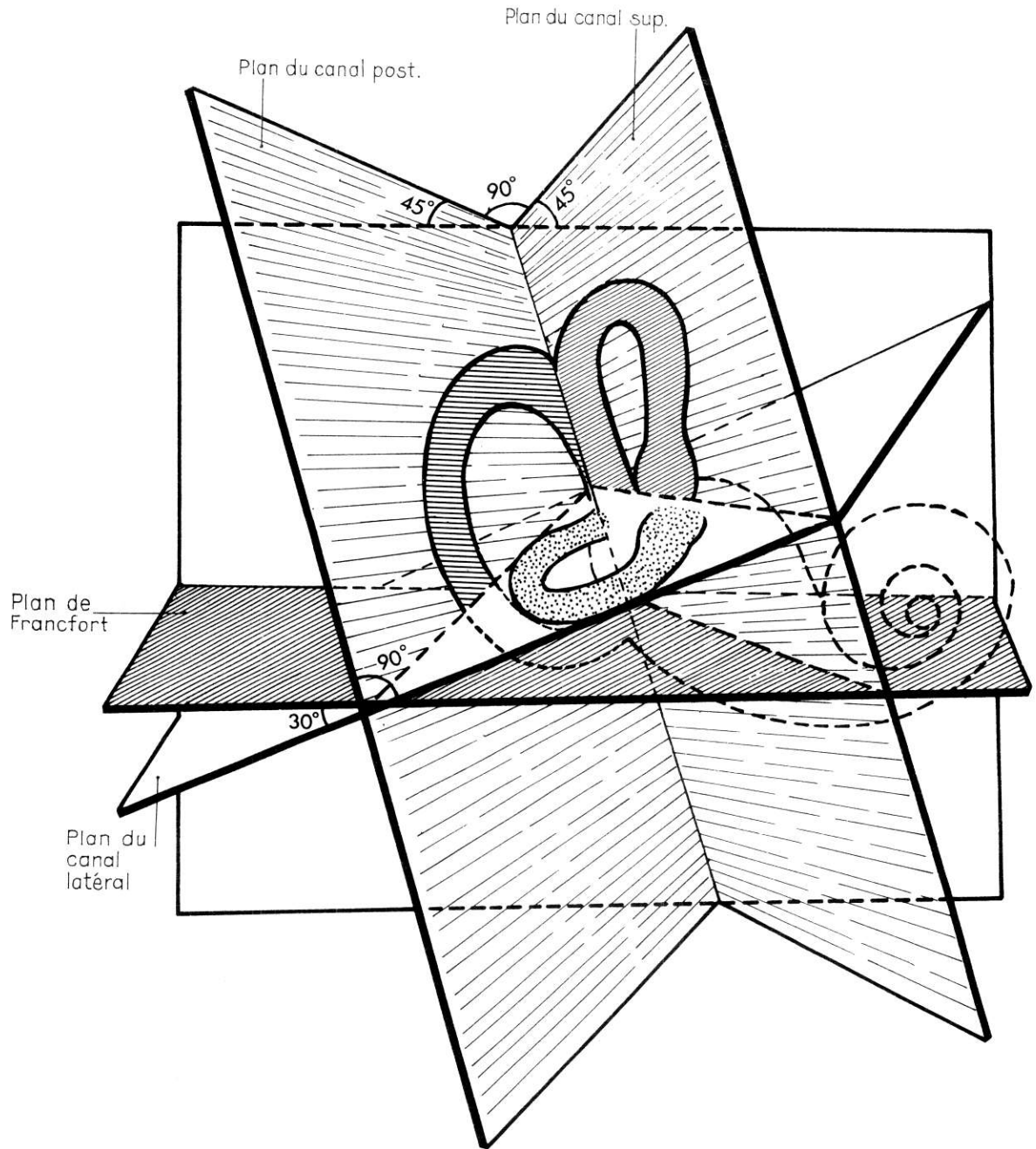


**VESTIBULE OSSEUX.** — Parois inférieure, postérieure et interne.

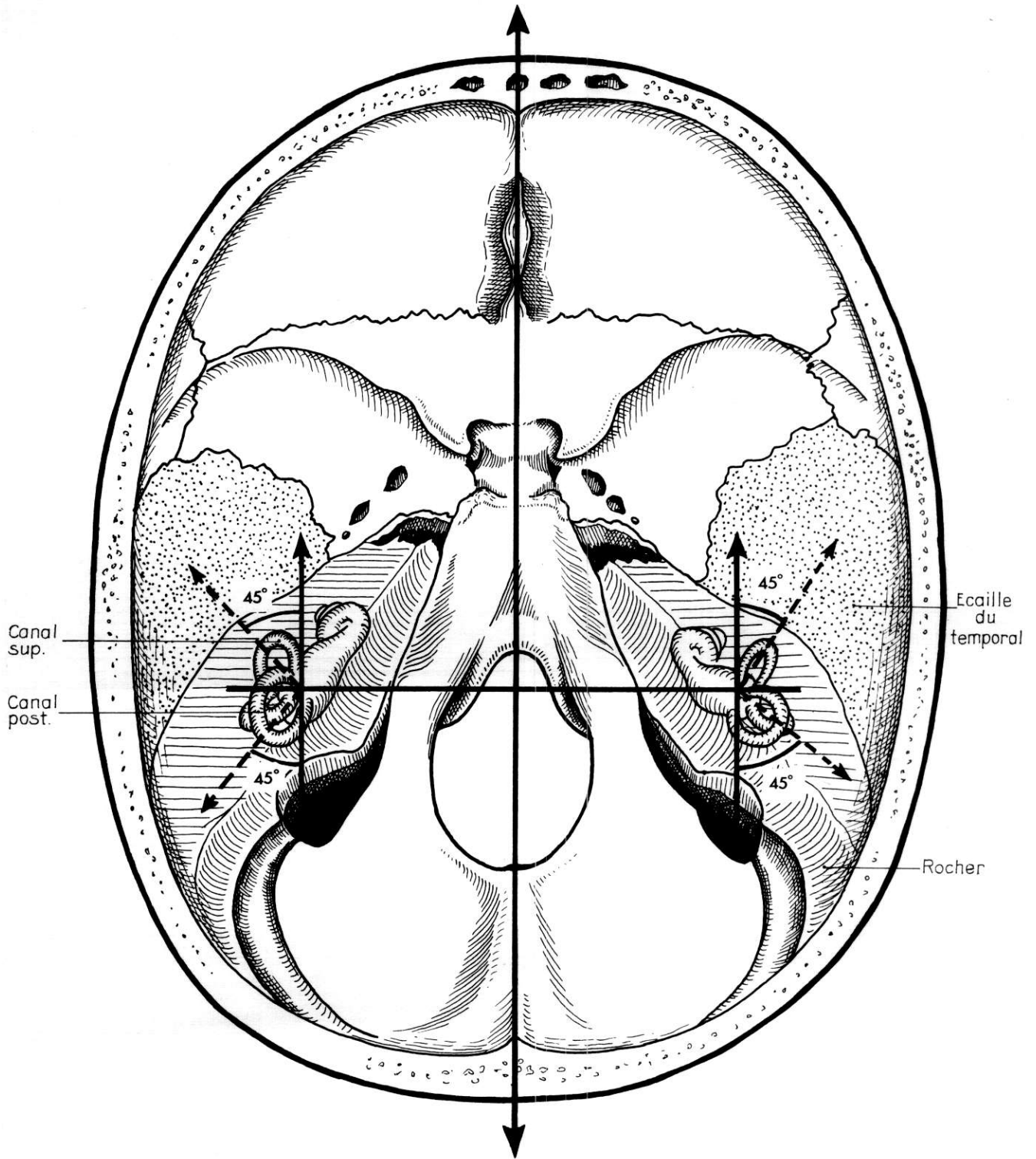




**VESTIBULE OSSEUX.** — Parois interne et antérieure.

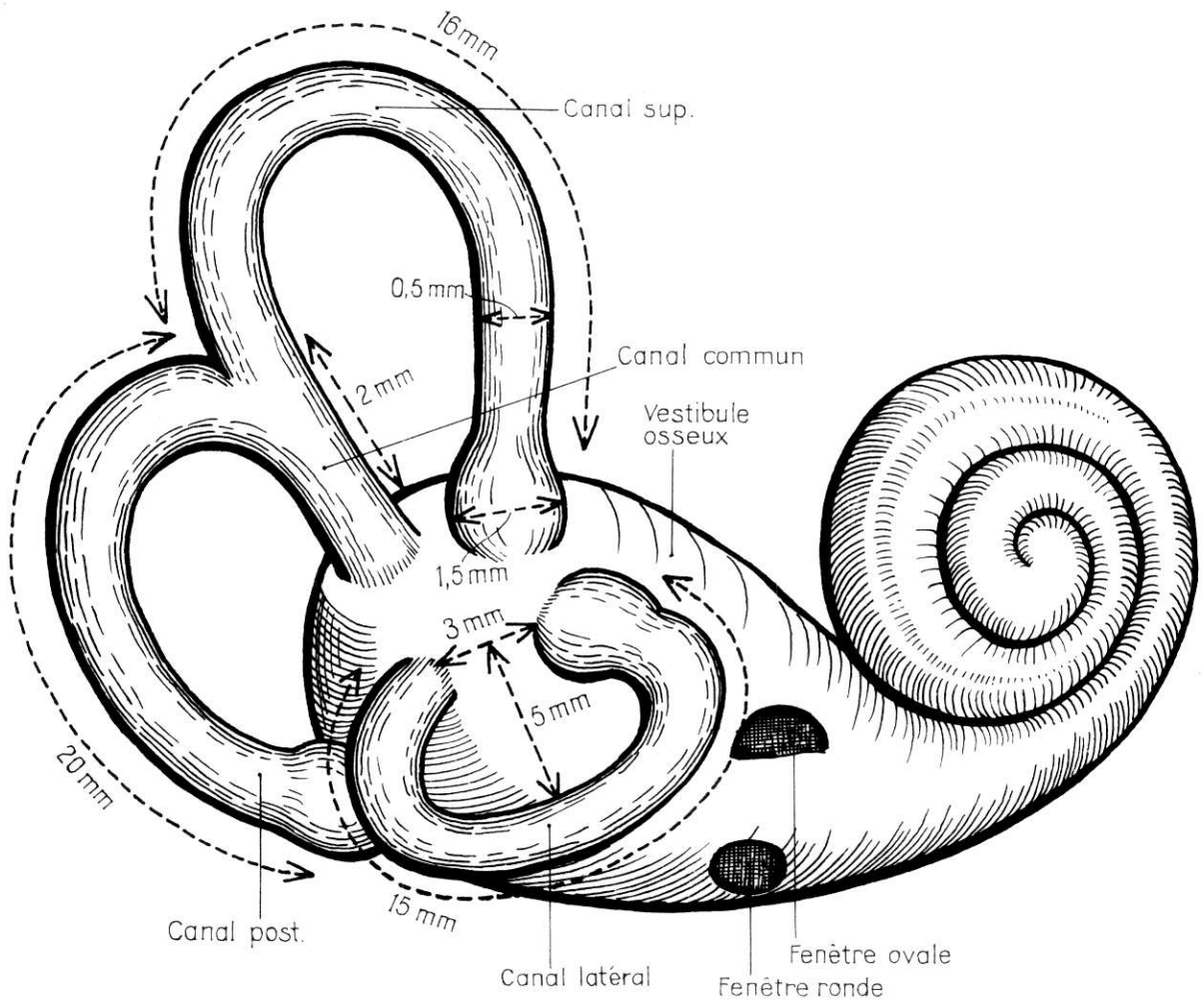


**CANAUX SEMI-CIRCULAIRES.** — Orientation dans l'espace.

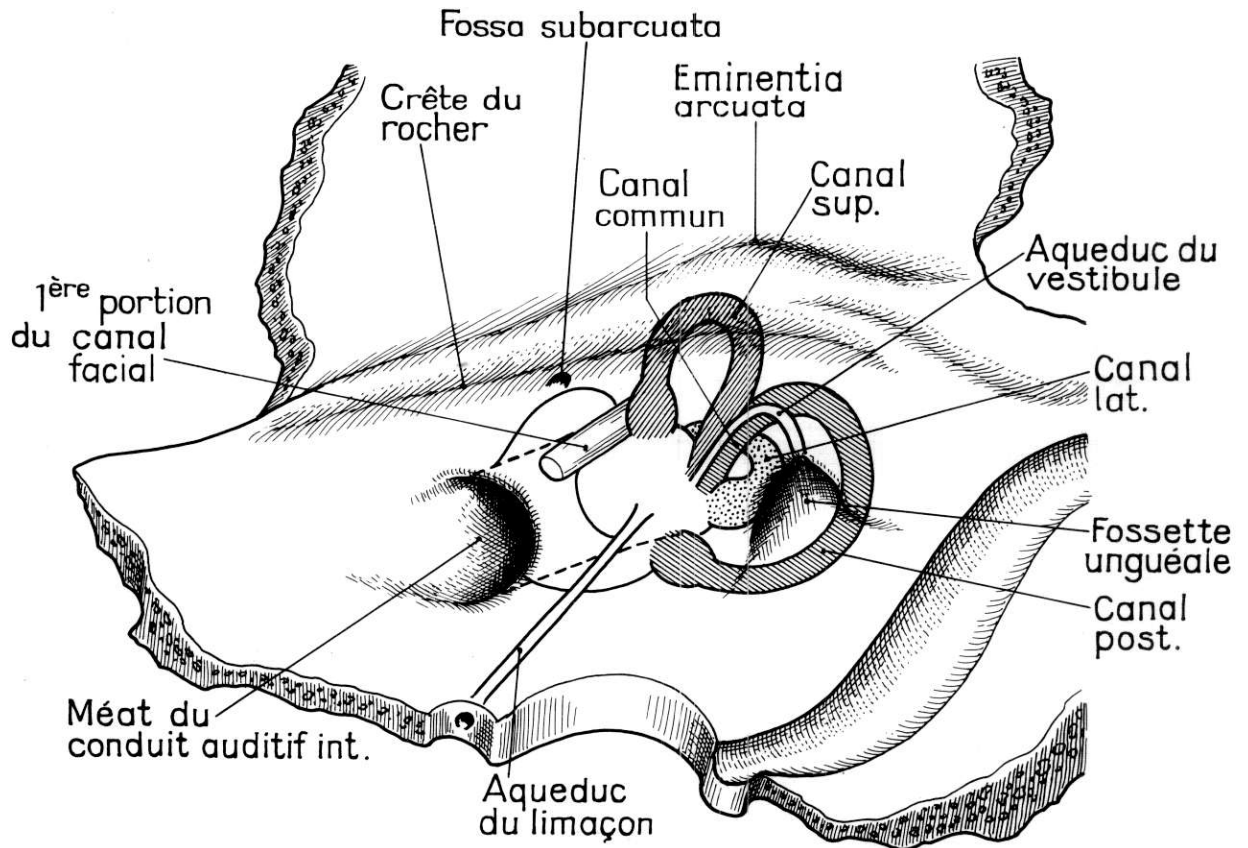


**ORIENTATION DES CANAUX SEMI-CIRCULAIRES VERTICAUX.**



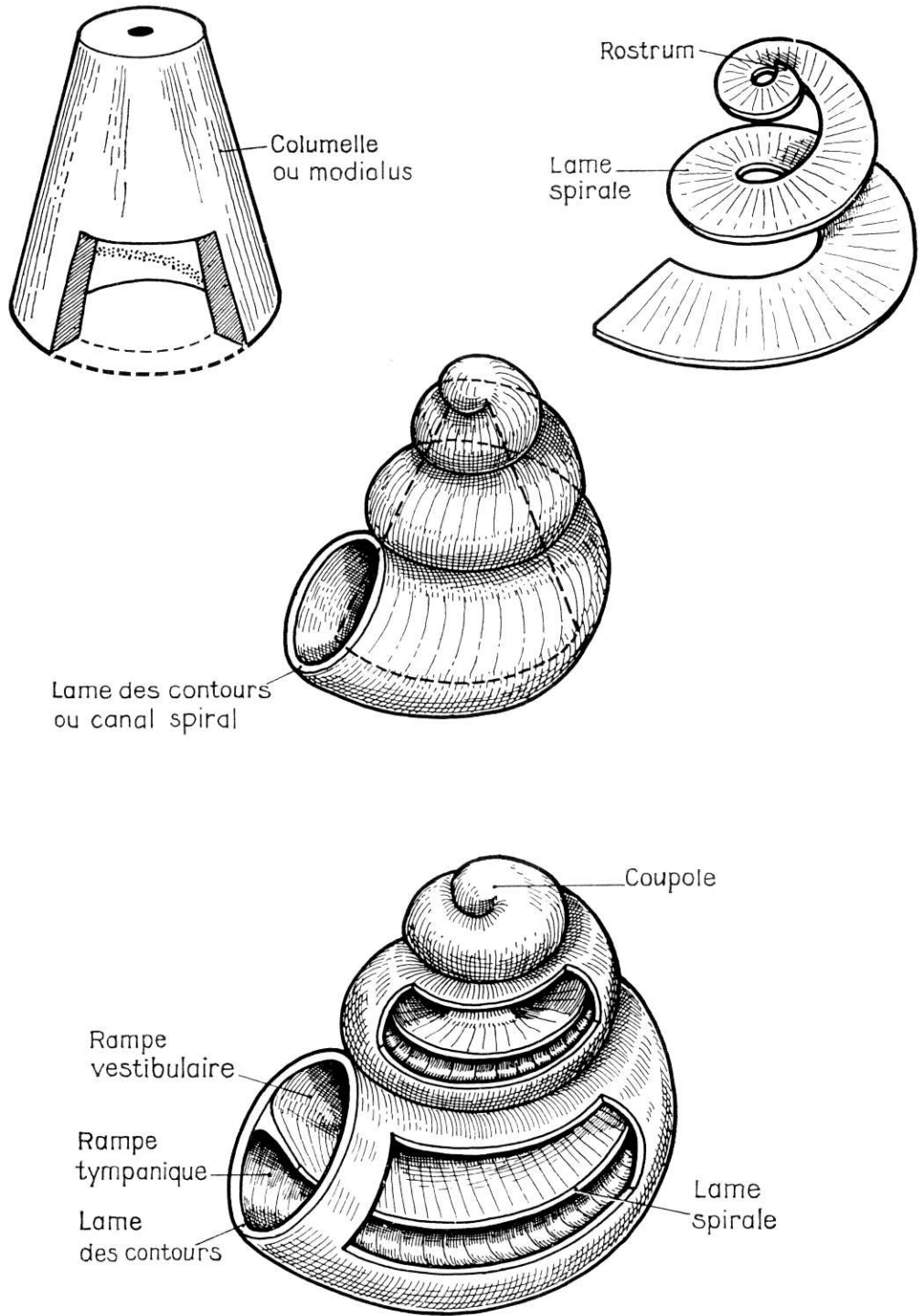


**CANAUX SEMI-CIRCULAIRES. DESCRIPTION ET DIMENSIONS.**

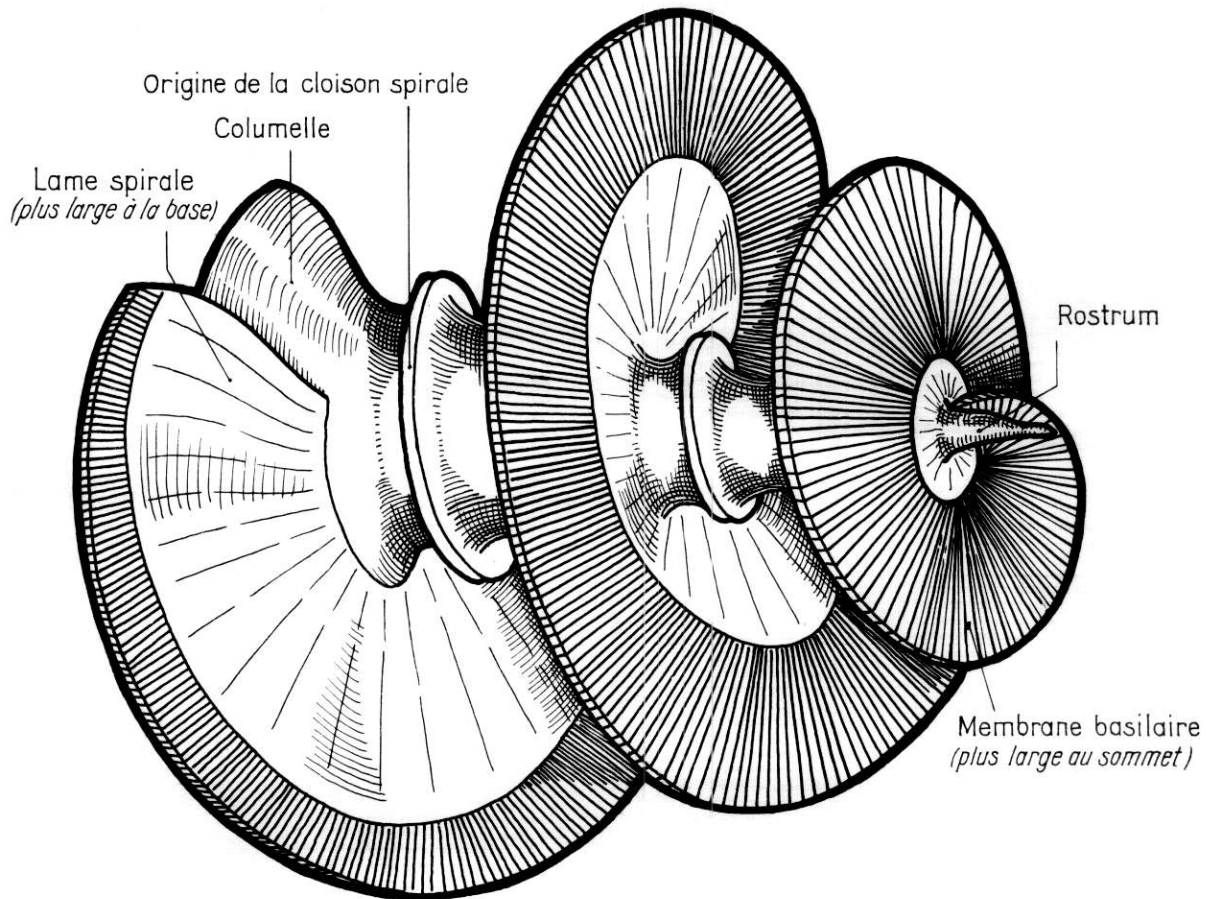


### **AQUEDUCS DU VESTIBULE ET DU LIMAÇON.**

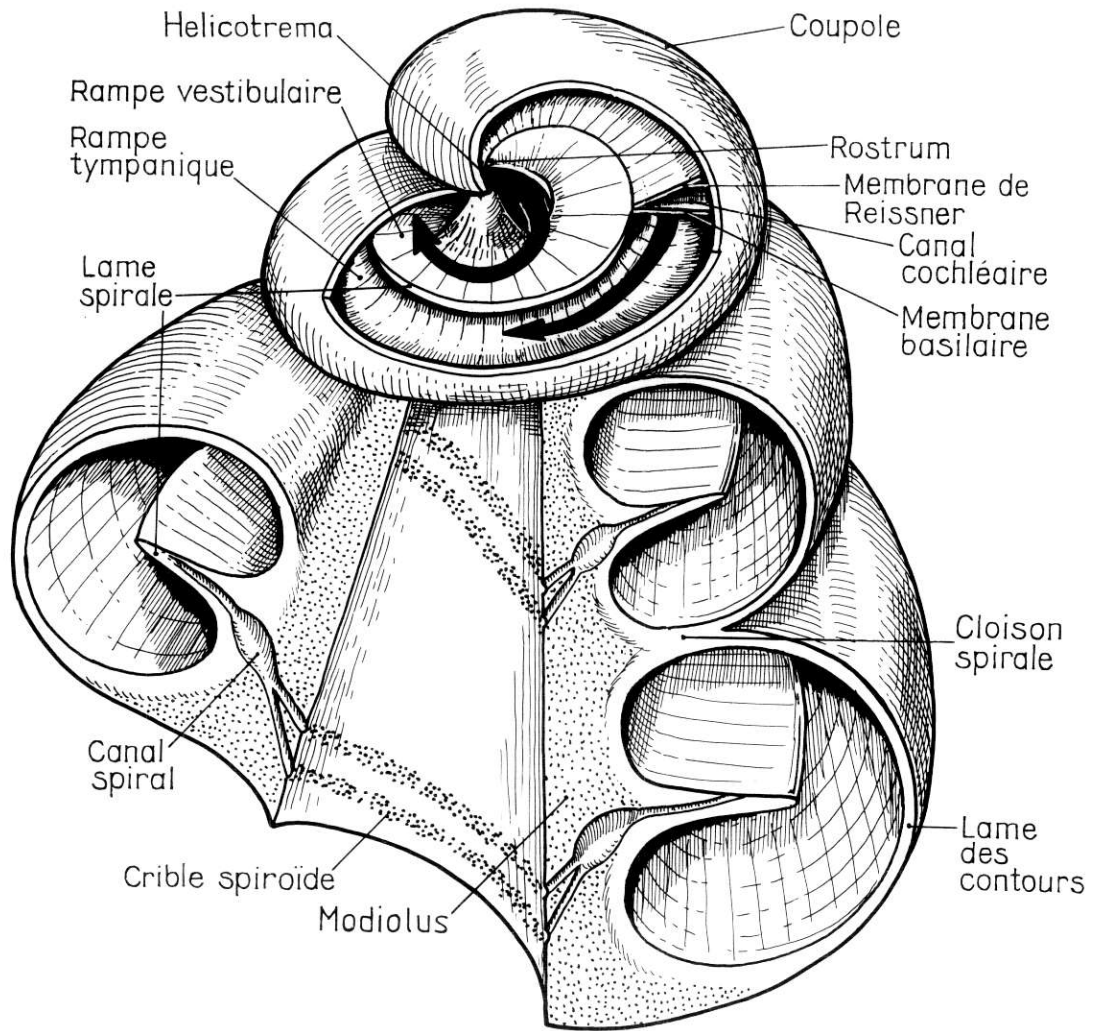
Rapports des canaux semi-circulaires avec le rocher.



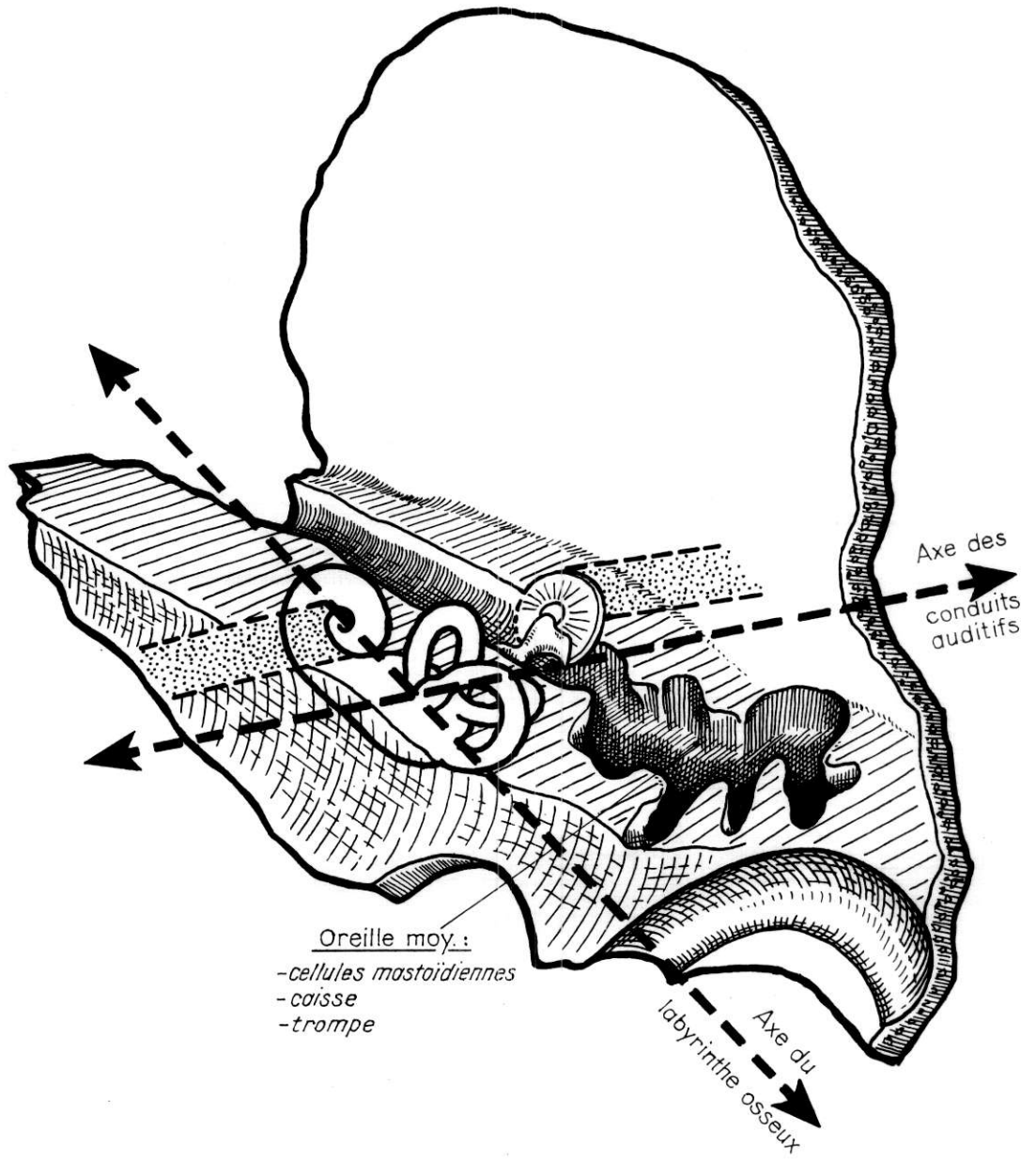
**LIMAÇON.** — Constitution.

**LAME SPIRALE ET MEMBRANE BASILAIRE.**

*(D'après BAST et ANSON).*

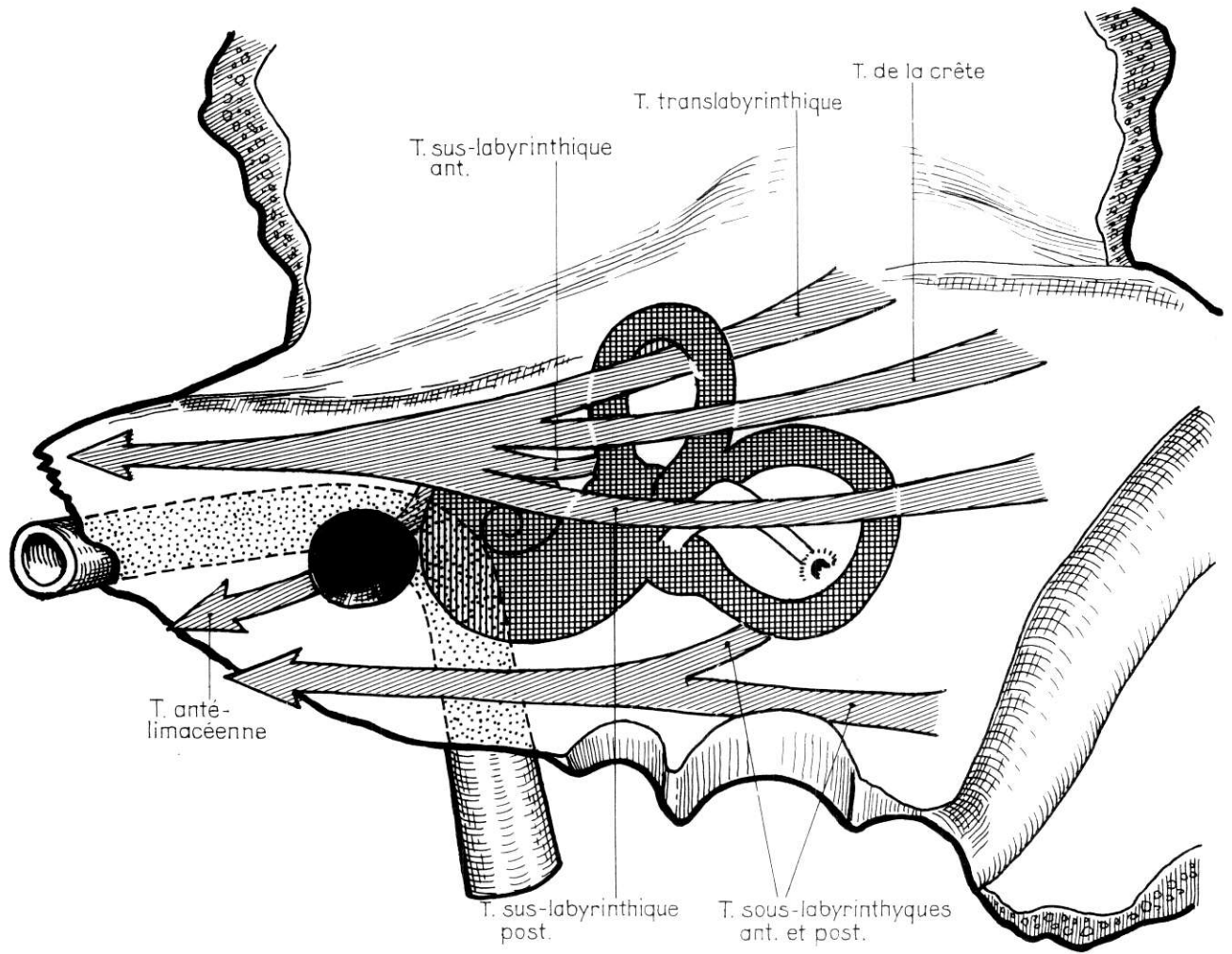


**VUE DU LIMAÇON SUPPOSÉ VERTICAL.**



**RAPPORTS D'ENSEMBLE.**





**RAPPORTS INTRA-PÉTREUX.**

Les traînées cellulaires péri-labyrinthiques.