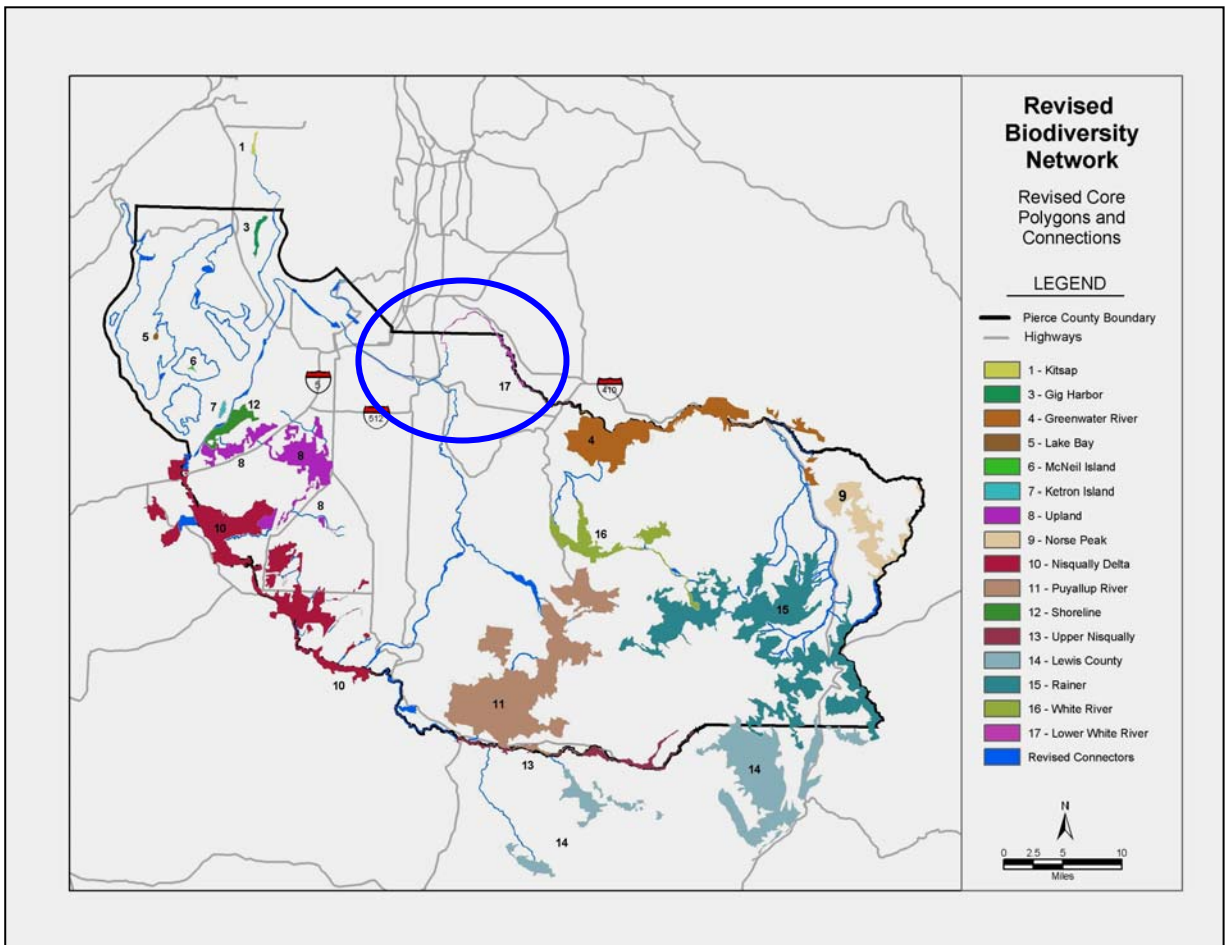


Pierce County Biodiversity Network Implementation Report to the Lower White River Community –

A Work in Progress of the
Pierce County Biodiversity Alliance (PCBA)

(Pierce County Planning and Land Services, University of Washington,
Washington Department of Fish and Wildlife, MetroParks Tacoma, Puyallup
River Watershed Council)



What is Biodiversity Planning?

Biodiversity planning is a method used to identify land areas that provide for a biologically diverse representation of species. This planning method considers long-term ecosystem health and establishes a goal of maintaining adequate habitat to ensure the continued viability of a diversity of species within an ecoregion.

Lower White River BioBlitz

June 3-4, 2006 and April 21, 2007

What is a BioBlitz? A rapid biological inventory of the plant and animal diversity found in a designated area during a 24-hour time frame.



Purpose

To continue the implementation of conservation planning for the Biodiversity Network with landowners and experts to build enthusiasm around biodiversity preservation through open discussion and exploration with experts. In doing so, discover why biodiversity preservation is meaningful to the community (including economically and socially), and to verify species lists for long-term monitoring through the *NatureMapping* Program.

Who was involved?

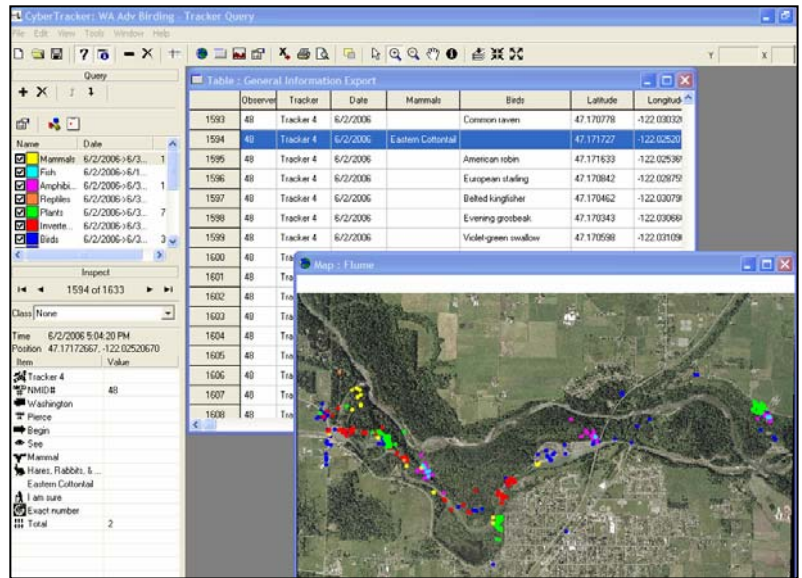
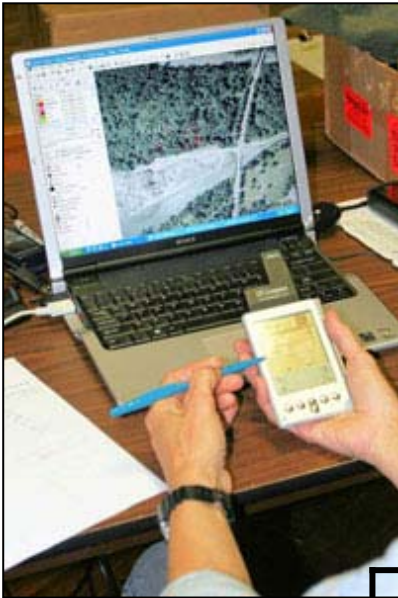
2006: Over 100 experts from natural resource agencies, universities, museums, Tahoma and Seattle Audubon, individuals with expertise on specific taxa, such as beetles, bats etc., volunteers, and landowners participated. The bioblitz was funded by a grant from the Washington Biodiversity Council.

2007: Twenty-five experts and volunteers spent 12 hours blitzing 3 sites: Auburn Wilderness Park, City of Pacific Park, and Pierce/King County Water Resources property. The bioblitz was funded by a grant from the Environmental Protection Agency.

The Results

There are four important things to understand about the results:

1. Bird predictions were for breeding birds only. We expect more species to be added to the list when a winter bird blitz is held.
2. We only spent 24-hours in portions of the Lower White River in 2006 and 12-hours in 2007. There may be more wildlife species we didn't see.
 - For some birds, we won't have the opportunity to observe them until migration begins or during the winter.
 - We need more time to find more mammals by tracking their signs, for example, scat, tunnels, tracks, nests, and feeding signs.
3. We used the Washington Native Plant Society plant list for the Nisqually River area as a reference and identified 229 species of plants. The plants identified in this bioblitz and the Gig Harbor bioblitz are being added to the Nisqually River data in order to develop a "Master Plant List" for Pierce County.



	2006	2007
Birds	81	40
Mammals	25	17
Amphibians	7	0
Reptiles	3	2
Fish	5	0
Invertebrates	207	12
Plants	230	196

Note: 2006 totals were adjusted after the final report was issued.

The Results

	June 2006	Earth Day April 2007
Volunteers	100	37
Cost	\$17,300	\$2,503
Area Sampled	1,593 acres	50 acres
Length of bioblitz	24 hours	12 hours
Taxa Teams		
Birds	3 teams	1 team
Amphibians/Reptiles	3 teams	
Mammals	3 teams	1 team
Trackers - Mammals		3 teams
Plants	3 teams	2 teams
Invertebrates		
Aquatic	1 team	
Mollusks	2 teams	
Butterflies/Moths	2 teams	
Beetles	2 teams	1 team
Spiders	1 team	



Predicted & Observed Species for the Lower White River Biodiversity Management Area

Predicted Amphibians	Earth Day		Predicted Mammals	Earth Day	
	June, 2006 bioblitz	4/21/07 bioblitz		June, 2006 bioblitz	4/21/07 bioblitz
<i>Bullfrog</i>	X		Beaver	X	X
<i>Ensatina</i>	X		Big brown bat ⁽⁴⁾	X	
Long-toed salamander	X		Black bear		
Northwestern salamander	X		Black rat		
Pacific treefrog (Chorus frog)	X		Black-tailed deer ⁽⁴⁾	X	X
Red-legged frog ⁽³⁾	X		Bobcat	X	
Roughskin newt	X		California myotis ⁽⁴⁾	X	
Western toad ⁽³⁾	X		Coast mole	X	X
			Coyote	X	X
Reptiles			Creeping vole		
Common garter snake	X	X	Deer mouse	X	X
Northern alligator lizard	X	X	<i>Douglas squirrel</i>	X	
<i>Northwestern garter snake</i>	X		Dusky (Montane) shrew		
Painted turtle ⁽¹⁾			Eastern cottontail	X	X
Rubber boa			Eastern gray squirrel	X	X
Western terrestrial garter snake	X		Elk	X	
			Ermine		
Fish			Fisher ^(2,3,4)		
<i>Prickly sculpin</i>	X		Hoary bat	X	
<i>Sculpin spp.</i>	X		Little brown myotis ⁽⁴⁾	X	
<i>Speckled dace</i>	X		Long-eared myotis ^(3,4)		
<i>Western brook lamprey</i>	X		Long-legged myotis ^(3,4)		
			Long-tailed (Forest) deer mouse	X	
			Long-tailed vole		
			Long-tailed weasel	X	
			Mink ⁽⁴⁾		X
			Mole spp.	X	
			Mountain beaver	X	
			Mountain lion		
			Muskrat	X	X
			Northern flying squirrel		
			Norway rat	X	X
			Nutria	X	
			Pacific jumping mouse	X	
			Pacific water shrew ⁽³⁾		
			Porcupine		
			Raccoon	X	X
			Rat spp.		X
			Red fox		
			River otter	X	X
			Shrew-mole		
			Shrew spp.	X	X
			Silver-haired bat ⁽²⁾		
			Southern red-backed vole		
			Spotted skunk		
			Striped skunk		
			Townsend's big-eared bat ^(2,3,4)		
			<i>Townsend's chipmunk</i>	X	
			Townsend's mole		X
			Townsend's vole	X	
			Vagrant shrew		
			Virginia opossum	X	X
			Vole spp.	X	X
			Yuma myotis ^(3,4)	X	

Predicted Birds	June, 2006		Birds	June, 2006	
	bioblitz	bioblitz		June, 2006 bioblitz	2006 bioblitz
American bittern ⁽²⁾			Macgillivray's warbler	X	
American coot			Mallard	X	X
American crow	X	X	Marsh wren	X	
American dipper			<i>Mourning dove</i>	X	
American goldfinch	X		Northern flicker	X	X
<i>American kestrel</i>	X		Northern harrier		
American robin	X	X	Northern oriole		
Bald eagle ^(3,4)	X	X	Northern rough-winged swallow	X	
Band-tailed pigeon ⁽⁴⁾	X		Northern shoveler		
<i>Bank swallow</i>	X		Olive-sided flycatcher ⁽³⁾	X	
<i>Barred owl</i>	X		Orange-crowned warbler	X	X
Barn swallow	X		Osprey ⁽³⁾		X
Belted kingfisher	X	X	Pacific slope flycatcher (Western)	X	
Bewick's wren	X	X	Pied-billed grebe ⁽⁴⁾		
Black-capped chickadee	X	X	<i>Pileated woodpecker</i>	X	X
Black-headed grosbeak	X		<i>Pine siskin</i>	X	
Black-throated gray warbler	X		Purple finch	X	
Blue-winged teal			<i>Red-breasted nuthatch</i>	X	X
Brewer's blackbird	X		Red-breasted sapsucker	X	X
<i>Brown creeper</i>	X	X	Red-eyed vireo	X	
Brown-headed cowbird	X		Red-tailed hawk	X	X
Bushtit	X	X	Red-winged blackbird	X	X
California quail			Rock dove	X	
Canada goose	X	X	Ruddy duck		
Cedar waxwing	X	X	Ruffed grouse		
<i>Chestnut-backed chickadee</i>	X	X	Rufous hummingbird	X	X
Cinnamon teal			Savannah sparrow	X	X
Cliff swallow	X		Song sparrow	X	X
Common barn-owl	X		Sora		
Common merganser	X	X	Spotted sandpiper ⁽⁴⁾	X	
Common nighthawk	X		Spotted towhee (Rufous-sided)	X	X
Common raven	X		Steller's jay	X	X
Common snipe			Swainson's thrush	X	
Common yellowthroat	X		Townsend's warbler		X
Cooper's hawk ⁽²⁾	X		Tree swallow	X	X
<i>Dark-eyed junco</i>	X	X	Turkey vulture ⁽³⁾	X	X
Downy woodpecker	X	X	Vaux's swift ^(3,4)	X	
European starling	X		Violet-green swallow	X	X
<i>Evening grosbeak</i>	X		Virginia rail		
Gadwall			Warbling vireo	X	
Glaucous-winged gull		X	<i>Western meadowlark</i>	X	
<i>Golden-crowned kinglet</i>	X		Western screech-owl		X
Great blue heron ^(3,4)	X	X	<i>Western tanager</i>	X	
Great horned owl			Western wood-pewee	X	
Green heron (Green-backed heron)	X	X	White-crowned sparrow	X	X
Green-winged teal			Willow flycatcher ⁽³⁾	X	X
<i>Hairy woodpecker</i>	X		Wilson's warbler	X	
Hooded merganser ⁽⁴⁾			<i>Winter wren</i>	X	
House finch	X		Wood duck ⁽⁴⁾	X	
House sparrow	X		Yellow warbler ⁽²⁾	X	X
House wren			<i>Yellow-rumped warbler</i>	X	X
Hutton's vireo	X				
Killdeer	X				
Lazuli bunting	X				

Observed Species for the Lower White River - 2006
Earth Day Bioblitz 2007

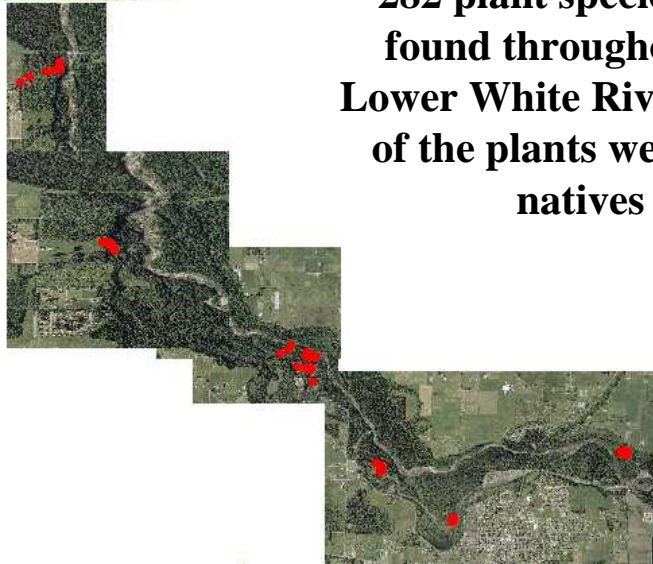
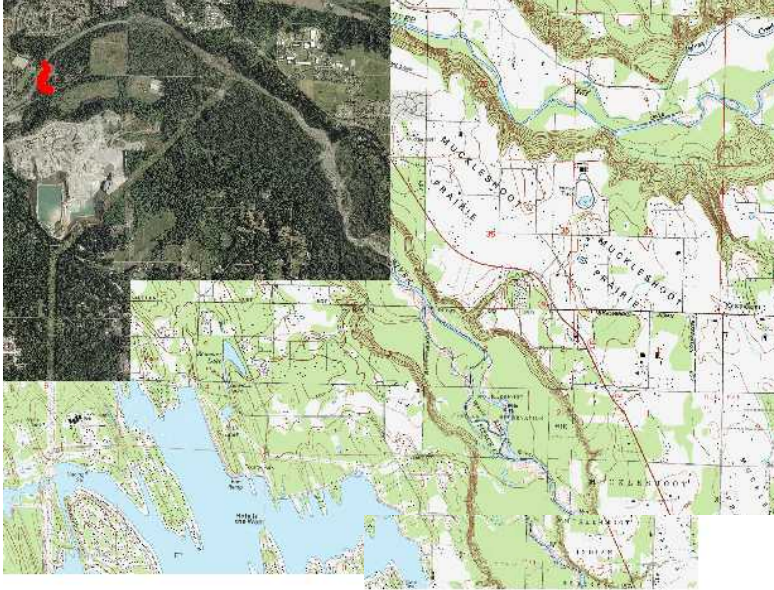
Invertebrates

ID #	Family	Genus	Species	Common Name	2006	2007
1	Agriolimacidae	Deroceras	reticulatum	Grey Field Slug	X	
2	Arionidae	Ariolimax	columbianus	Pacific Banana Slug	X	
3	Arionidae	Arion	intermedius	Hedgehog Arion	X	
4	Arionidae	Arion	rufus	Chocolate Arion	X	
5	Arionidae	Arion	subfuscus		X	
6	Arionidae	Prophysaon	vanattae	Scarletback Tailcropper	X	
7	Bradybaenidae	Monadenia	fidelis	Pacific Sideband	X	
8	Corychiidae	Carychium	occidentale	Western Thorn	X	
9	Daubebariidae	Oxychilus	alliaris	Garlic Glass-snail	X	
10	Euconulidae	Euconulus	fulvus	Brown Hive	X	
11	Gastrodontidae	Striatura	pugentensis	Northwest Striate	X	
12	Haplotrematidae	Ancotrema	sportella	Beaded Lancetooth	X	
13	Haplotrematidae	Haplotrema	vancouverense	Robust Lancetooth	X	
14	Helicidae	Cepaea	nemoralis	Grow Snail	X	
15	Helicidae	Cornu	aspersum	Grown Garden Snail	X	
16	Limacidae	Limax	maximus	Giant Garden Slug	X	
17	Polygyridae	Allogona	townsendiana	Oregon Forest Snail	X	
18	Polygyridae	Cryptomastix	devia	Puget Oregonian	X	
19	Polygyridae	Cryptomastix	germana	Pygmy Oregonian	X	
20	Polygyridae	Vespericola	columbianus	Northwest Hesperian	X	
21	Pristilomatidae	Pristiloma	stearnsii	Striate Tightcoil	X	
22	Vertiginidae	Columella	edentula	Toothless Column	X	
23	Agelenidae	Agelenopsis	sp. 1		X	
24	Agelenidae	Calymmaria	sp. 1		X	
25	Agelenidae	Cicurina	pusilla		X	
26	Agelenidae	Cicurina	sp. 1		X	
27	Agelenidae	Cryphoeca	exlineae		X	
28	Agelenidae	Cybaeus	sp.		X	
29	Amaurobiidae	Callobius	pictus	spider	X	
30	Amaurobiidae	Callobius	sp. 1	spider	X	
31	Araneidae	Araneus	sp. 1		X	
32	Araneidae	Cyclosa	conica		X	
33	Arctiidae	Tyria	jacobaeae	Cinnabar Moth	X	
34	Arionidae	Arion	ater	European Black Slug	X	
35	Chrysomelidae	Altica	ambiens	Alder Flea Beetle	X	
36	Clubionidae	Clubiona	sp. 1		X	
37	Clubionidae	Phruotimpus	borealis		X	
38	Dictynidae	Dictyna	sp. 1	spider	X	
39	Gnaphosidae	Zelotes	fratris	ground spiders	X	
40	Hahniidae	Hahnia	cinerea		X	
41	Ischyropsalididae	Hesperonemastoma	modestum	harvestmen	X	
42	Ischyropsalididae	Sabacon	occidentalis	harvestmen	X	
43	Libellulidae	Libellula	forensis	Eight Spotted Skimmer	X	
44	Ligiidae	Ligidium	gracile	Isopod	X	
45	Linyphiidae	Ceratinella	sp. 1	sheeweb weavers	X	

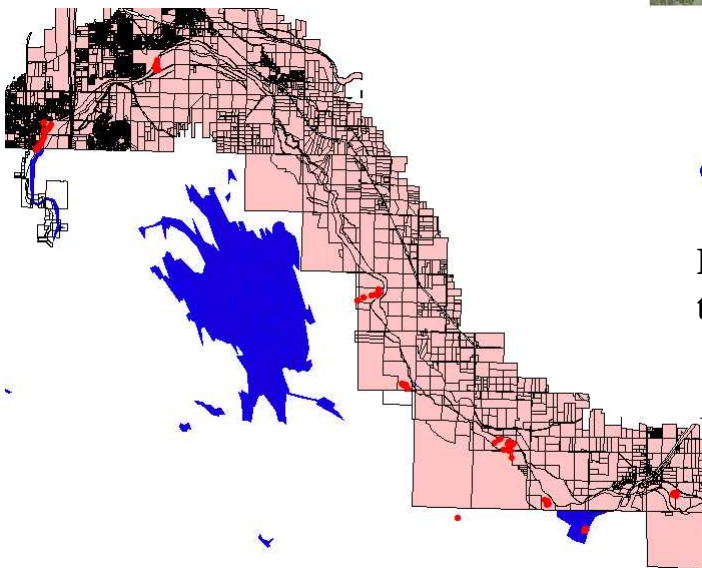
ID #	Family	Genus	Species	Common Name	2006	2007
46	Linyphiidae	Entelecara	acuminata	sheeweb weavers	X	
47	Linyphiidae	Lepthyphantus	zibus	sheeweb weavers	X	
48	Linyphiidae	Nerienne	litigiosa	sheeweb weavers	X	
49	Linyphiidae	Wubana	pacifica	sheeweb weavers	X	
50	Lithobiidae		sp. 1	centipede	X	
51	Lycosiade	Pardosa	dosuncata	wolf spiders	X	
52	Lycosiade	Pardosa	vancouveri	wolf spiders	X	
53	Lycosiade	Tarentula	kochii	wolf spiders	X	
54	Parajulidae		sp. 1	millipede	X	
55	Parajulidae		sp. 2	millipede	X	
56	Phalangiidae	Leptobunus	sp. 1		X	
57	Phalangiidae	Paraplatybunus	triangularis		X	
58	Pupillidae			minute snail	X	
59	Raphidophora		sp. 1	Snakefly	X	
60	Salticidae	Calticus	scenicus		X	
61	Salticidae	Evarcha	proszynskii		X	
62	Salticidae	Neon	reticulatus		X	
63	Salticidae	Phanias	albeolus	jumping spiders	X	
64	Sminthuridae		sp. 1	snail	X	
65	Tetragnathidae	Metellina	curtisi		X	
66	Tetragnathidae	Tetragnatha	laboriosa		X	
67	Theridiidae	Enoplognatha	ovata		X	
68	Theridiidae	Theridion	bimaculatum		X	
69	Theridiidae	Theridion	sexpunctatum		X	
70	Theridiidae	Theridion	simile		X	
71	Theridiidae	Theridion	tinctum		X	
72	Theridiidae	Theridion	varians		X	
73	Thomisidae	Misumena	vatia	crab spiders	X	
74	Thomisidae	Ozyptila	pacifica	crab spiders	X	
75	Thomisidae	Philodromus	dispar	crab spiders	X	
76	Thomisidae	Philodromus	joesemitenis	crab spiders	X	
77	Thomisidae	Xysticus	pretiosus	crab spiders	X	
78	Nematomorpha				X	
79	Oligochaeta				X	
80	Diptera	Chironomidae			X	
81	Diptera	Chelifera			X	
82	Diptera	Simuliidae			X	
83	Diptera	Tipula			X	
84	Ephemeroptera	Cinygmula			X	
85	Ephemeroptera	Ephemerellidae			X	
86	Ephemeroptera	Baetis	tricaudatus		X	
87	Ephemeroptera	Ameletus			X	
88	Ephemeroptera	Caudatella	hystrix		X	
89	Ephemeroptera	Epeorus	longimanus		X	
90	Plecoptera	Sweltsa			X	
91	Trichoptera	Rhyacophila			X	
92	Trichoptera	Lepidostoma			X	
93	Trichoptera	Brachycentridae			X	
94	Carabidae	Cicindela	depressula	Ground beetle	X	
95	Carabidae	Carabus	nemoralis	Carabid Beetle	X	

ID #	Family	Genus	Species	Common Name	2006	2007
96	Carabidae	Scaphinopus	angusticollis	Ground beetle	X	
97	Carabidae	Cychrus	tuberculatus	Ground beetle	X	
98	Carabidae	Nebria	piperi	Ground beetle	X	
99	Carabidae	Nebria	eschscoltsii	Ground beetle	X	
100	Carabidae	Nebria	gyenhali	Ground beetle	X	
101	Carabidae	Nebria	crassicornis	Ground beetle	X	
102	Carabidae	Diplous	aterrimus	Ground beetle	X	
103	Carabidae	Loricara	decimpucata	Ground beetle	X	
104	Carabidae	Harpalus	carbonatus	Ground beetle	X	
105	Carabidae	Harpalus	seclusus	Ground beetle	X	
106	Carabidae	Harpalus	affinis	Ground beetle	X	
107	Carabidae	Pterostichus	algidus	Ground beetle	X	
108	Carabidae	Pterostichus	creniculus	Ground beetle	X	
109	Carabidae	Pterostichus	herculeanus	Ground beetle	X	
110	Carabidae	Bembidion	platinoides	Ground beetle	X	
111	Carabidae	Acupalpus		Ground beetle	X	
112	Carabidae	Trechus	obtusus	Ground beetle	X	
113	Carabidae	Tachys		Ground beetle	X	
114	Hemiptera			true bug	X	
115	Carabidae	Cicindela	oregona	Tiger beetle		X
116	Apidae	Bombus				X
117				Wood sawfly		X
118	Formicidae			Moss ant		X
119	Cicadellidae			Tree hopper		X
120	Carabidae	Scaphinopus		Small slug killer		X
121	Carabidae	Harpalini		Black ground beetle		X
122	Staphylinidae	Osoriinae		Rove beetle		X
123	Carabidae	Nubius				X
124	Miridae			Plant bug		X

Lower White River Native and Non-native Plant List



282 plant species were found throughout the Lower White River...56% of the plants were non-natives



Bioblitz data were collected at the locations marked in red

Lower White River Plant list (*non-native)

ID	Scientific Name	Common Name	Plant Family	Earth Day	
				LWR BMA Observed 2006	Bioblitz Observed2 007
1	<i>Abies grandis</i>	Grand fir	Pinaceae	1	
2	<i>Acer circinatum</i>	Vine maple	Aceraceae	1	1
3	<i>Acer macrophyllum</i>	Big-leaf maple	Aceraceae	1	1
4	<i>Acer saccharum*</i>	Sugar maple	Aceraceae	1	
5	<i>Achillea millifolium</i>	Yarrow	Asteraceae	1	1
6	<i>Achlys californica</i>	Deer-foot	Berberidaceae		
7	<i>Achlys triphylla</i>	Vanilla leaf	Berberidaceae	1	
8	<i>Actaea rubra</i>	Baneberry	Ranunculaceae	1	1
9	<i>Adenocaulon bicolor</i>	Pathfinder	Asteraceae		
10	<i>Adiantum pedatum</i>	Maidenhair fern	Polypodiaceae	1	1
525	<i>Aesculus hippocastaneum* (720)</i>	Horse chestnut	Hippocastanaceae	1	
11	<i>Agropyron caninum</i>	Bearded wheatgrass	Poaceae		
12	<i>Agropyron repens*</i>	Quack grass	Poaceae	1	
13	<i>Agrostis alba*</i>	Red top	Poaceae		
14	<i>Agrostis oregonensis</i>	Oregon bentgrass	Poaceae		
15	<i>Agrostis stolonifera</i>	Colonian bentgrass	Poaceae		
16	<i>Aira caryophyllea*</i>	Silver hairgrass	Poaceae	1	
17	<i>Aira praecox*</i>	Early hairgrass	Poaceae	1	1
18	<i>Ajuga reptans*</i>	Ajuga	Lamiaceae		
661	<i>Alchemilla occidentalis</i>	Western lady's mantle		1	1
19	<i>Alisma plantago-aquatica</i>	American waterplantain	Alismataceae	1	1
20	<i>Allophyllum divaricatum*</i>	Pink false-gilia	Polemoniaceae		
21	<i>Alnus rubra</i>	Red alder	Betulaceae	1	1
22	<i>Alopecurus geniculatus</i>	Water foxtail	Poaceae	1	
23	<i>Alopecurus pratensis*</i>	Meadow foxtail	Poaceae		
24	<i>Amaranthus powellii*</i>	Powell's amaranth	Amaranthaceae		
25	<i>Ambrosia chamissonis</i>	Silver bursage	Asteraceae		
26	<i>Amelanchier alnifolia</i>	Serviceberry	Rosaceae	1	1
27	<i>Amsinckia menziesii</i>	Menzies' fiddleneck	Boraginaceae		
28	<i>Anaphalis margaritacea</i>	Pearly everlasting	Asteraceae	1	1
29	<i>Angelica arguta</i>	Sharp-tooth angelica	Apiaceae		
30	<i>Angelica genuflexa</i>	Kneeling angelica	Apiaceae		
31	<i>Angelica lucida</i>	Sea-watch	Apiaceae		
32	<i>Anthemis cotula*</i>	Dog fennel	Asteraceae		
33	<i>Anthoxanthum odoratum*</i>	Sweet vernalgrass	Poaceae	1	1
34	<i>Anthriscus scandicina*</i>	Chervil	Apiaceae		1
742	<i>Aphanes arvensis</i>	Western lady's mantle	Rosaceae		1
35	<i>Arabidopsis thaliana*</i>	Thale cress	Brassicaceae		1
36	<i>Arbutus menziesii</i>	Pacific madrone	Ericaceae	1	1
37	<i>Arctium minus*</i>	Common burdock	Asteraceae	1	
38	<i>Arctostaphylos uva-ursi</i>	Bearberry	Ericaceae		1
39	<i>Arenaria macrophylla</i>	Big-leaf sandwort	Caryophyllaceae		
40	<i>Artemisia douglasiana</i>	Douglas' sagewort	Asteraceae	1	
41	<i>Artemisia suksdorfii</i>	Suksdorf's sagewort	Asteraceae	1	1
42	<i>Aruncus sylvestris</i>	Goatsbeard	Rosaceae	1	
43	<i>Asarum caudatum</i>	Wild ginger	Aristolochiaceae	1	
44	<i>Asperugo procumbens*</i>	Madwort	Boraginaceae		
45	<i>Aster eatonii</i>	Eaton's aster	Asteraceae		
46	<i>Aster subspictus</i>	Douglas' aster	Asteraceae		
47	<i>Athyrium filix-femina</i>	Lady fern	Polypodiaceae	1	1
48	<i>Atriplex patula</i>	Orache	Chenopodiaceae		
49	<i>Azolla filiculoides</i>	Pacific water-fern	Salviniaceae		
50	<i>Azolla mexicana</i>	Mexican water-fern	Salviniaceae		
51	<i>Barbarea orthoceras</i>	American wintercress	Brassicaceae		1

Lower White River Plant list (*non-native)

ID	Scientific Name	Common Name	Plant Family	LWR BMA	Earth Day
				Observed 2006	Bioblitz Observed2 007
737	Bellis perennis*				1
52	Berberis aquifolium	Tall Oregongrape	Berberidaceae	1	
53	Berberis nervosa	Cascade Oregongrape	Berberidaceae	1	1
54	Bidens amplissima	Bur-marigold	Asteraceae		
55	Bidens cernua	Nodding beggar-ticks	Asteraceae		
56	Bidens frondosa	Leafy beggar-ticks	Asteraceae		
57	Blechnum spicant	Deer fern	Polypodiaceae	1	
58	Brassica campestris*	Common mustard	Brassicaceae		1
716	Bromus commutatus	Hairy brome	Poaceae	1	
59	Bromus mollis*	Soft brome	Poaceae	1	
60	Bromus pacificus	Pacific brome	Poaceae		1
61	Bromus sitchensis	Alaska brome	Poaceae		
512	Bromus sp.		Poaceae	1	
62	Bromus tectorum*	Cheat grass	Poaceae		
522	Bromus vulgaris	Common brome	Poaceae	1	
709	Bromus vulgaris	Common brome	Poaceae	1	
514	Buddleja davidsonii	Butterflybush	Buddlejaceae	1	
63	Calamagrostis canadensis	Bluejoint	Poaceae		
64	Callitriche heterophylla	Different-leaved water-starwort	Callitrichaceae		1
65	Callitriche stagnalis	Pond water-starwort	Callitrichaceae	1	
66	Camassia quamash	Common camas	Liliaceae		
67	Campanula scouleri	Scouler's harebell	Campanulaceae		
68	Capsella bursa-pastoris*	Shepherd's purse	Brassicaceae		1
69	Cardamine angulata	Seaside bittercress	Brassicaceae		
70	Cardamine breweri	Brewer's bittercress	Brassicaceae		
72	Cardamine hirsuta	Little Western bittercress	Brassicaceae	1	1
71	Cardamine integrifolia	Milk maids	Brassicaceae		
73	Cardamine pulcherrima	Spring beauty	Brassicaceae		1
732	Cardamine sp.	Bittercress	Brassicaceae		1
74	Carex arthrostrachya	Slender-beak sedge	Cyperaceae		
75	Carex densa	Dense sedge	Cyperaceae		
76	Carex deweyana	Dewey's sedge	Cyperaceae	1	1
77	Carex hendersonii	Henderson's sedge	Cyperaceae	1	
78	Carex lyngbyei	Lingby's sedge	Cyperaceae		
79	Carex obnupta	Slough sedge	Cyperaceae	1	
524	Carex sp. (723/726/677/7113)	Sedge	Cyperaceae	1	1
80	Carex stipata (501)	Sawbeak sedge	Cyperaceae	1	
81	Ceanothus sanguineus	Redstem ceanothus	Rhamnaceae		
508	Centaurea maculosa	Spotted knapweed	Asteraceae	1	1
82	Centaureum umbellatum*	Common centaury	Gentianaceae		
83	Cerastium viscosum*	Sticky chickweed	Caryophyllaceae		1
84	Cerastium vulgatum* (660/702)	Mouse-ear chickweed	Caryophyllaceae	1	1
85	Chaenomeles japonica*	Flowering quince	Rosaceae		
86	Chenopodium album*	Pigweed	Chenopodiaceae		
87	Chenopodium hybridum	Sowbane	Chenopodiaceae		
88	Chimaphila umbellata	Pipsissewa	Ericaceae		
89	Chrysanthemum leucanthemum*	Ox-eye daisy	Asteraceae	1	1
90	Circaea alpina	Enchanter's nightshade	Onagraceae	1	1
91	Cirsium arvense*	Canada thistle	Asteraceae	1	1
92	Cirsium vulgare*	Bull thistle	Asteraceae	1	1
93	Clematis vitalba*	Traveller's joy	Ranunculaceae		
94	Collomia grandiflora	Large-flowered collomia	Polemoniaceae		
95	Collomia heterophylla	Varied-leaf collomia	Polemoniaceae		
507	Composite sp.		Asteraceae	1	

Lower White River Plant list (*non-native)

ID	Scientific Name	Common Name	Plant Family	LWR BMA	Earth Day
				Observed	Bioblitz
				2006	007
96	<i>Conium maculatum</i> *	Poison hemlock	Apiaceae	1	1
97	<i>Convolvulus arvensis</i> *	Field morning-glory	Convolvulaceae	1	1
98	<i>Coryza canadensis</i> *	Horseweed	Asteraceae		
99	<i>Corallorhiza maculata</i>	Spotted coral-root	Orchidaceae		
100	<i>Cornus nuttallii</i>	Pacific dogwood	Cornaceae		1
101	<i>Cornus stolonifera</i>	Red-osier dogwood	Cornaceae	1	1
102	<i>Corydalis scouleri</i>	Western corydalis	Fumariaceae	1	1
103	<i>Corylus cornuta</i>	Hazelnut	Betulaceae		1
104	<i>Cotoneaster franchettii</i> *	Cotoneaster	Rosaceae		
105	<i>Cotula coronopifolia</i>	Brass buttons	Asteraceae		
106	<i>Crataegus douglasii</i>	Black hawthorn	Rosaceae		1
107	<i>Crataegus monogyna</i> *	English hawthorn	Rosaceae	1	1
108	<i>Crepis capillaris</i> *	Smooth hawksbeard	Asteraceae		
109	<i>Crepis runcinata</i>	Dandelion hawksbeard	Asteraceae		
506	<i>Crepis</i> sp.		Asteraceae	1	
110	<i>Cuscuta salina</i>	Saltmarsh dodder	Cuscutaceae		
111	<i>Cytisus scoparius</i> *	Scot's broom	Fabaceae	1	1
112	<i>Dactylis glomerata</i> *	Orchard grass	Poaceae	1	1
113	<i>Daucus carota</i> *	Queen Anne's lace	Apiaceae		
114	<i>Deschampsia caespitosa</i>	Tufted hairgrass	Poaceae		
115	<i>Dicentra formosa</i>	Bleeding heart	Fumariaceae	1	1
116	<i>Digitalis purpurea</i> *	Foxglove	Scrophulariaceae	1	1
117	<i>Dipsacus sylvestris</i> *	Teasel	Dipsacaceae		1
118	<i>Disporum hookeri</i> (729)	Hooker fairy-bell	Liliaceae	1	
119	<i>Distichlis spicata</i>	Seashore salt grass	Poaceae		
120	<i>Draba verna</i>	Spring whitlow-grass	Brassicaceae		1
121	<i>Dryopteris austriaca</i>	Spreading wood-fern	Polypodiaceae	1	1
122	<i>Eleocharis ovata</i>	Ovoid spike-rush	Cyperaceae		
123	<i>Eleocharis palustris</i>	Common spike-rush	Cyperaceae		
124	<i>Eleocharis parvula</i>	Small spike-rush	Cyperaceae		
125	<i>Elodea canadensis</i>	Canadian waterweed	Hydrocharitaceae		
714	<i>Elymus glaucus</i>	Blue wild rye	Poaceae	1	
126	<i>Epilobium angustifolium</i>	Fireweed	Onagraceae	1	1
747	<i>Epilobium cilatum</i> * (previously <i>histenii</i>)		Onagraceae		1
127	<i>Epilobium paniculatum</i>	Tall annual willow-herb	Onagraceae		
128	<i>Epilobium watsonii</i> * (504)	Watson's willow-herb	Onagraceae	1	1
129	<i>Equisetum arvense</i>	Common horsetail	Equisetaceae	1	1
727	<i>Equisetum fluviatile</i>	Water horsetail	Equisetaceae	1	
130	<i>Equisetum hyemale</i>	Scouring rush	Equisetaceae	1	1
131	<i>Equisetum telmateia</i>	Giant horsetail	Equisetaceae	1	1
132	<i>Eriophorum chamissonis</i>	Chamisso's cottongrass	Cyperaceae		
133	<i>Erodium cicutarium</i> *	Filaree	Geraniaceae	1	1
134	<i>Erythronium oreganum</i>	Giant fawn-lily	Liliaceae		
517	<i>Eschscholzia californica</i>	California poppy	Papaveraceae	1	
135	<i>Euonymus fortunei</i> *	Euonymus	Celastraceae		
136	<i>Festuca arundinacea</i> * (676)	Tall fescue	Poaceae	1	
137	<i>Festuca bromoides</i> * (717)	Barren fescue	Poaceae	1	
138	<i>Festuca myuros</i> *	Rat-tail fescue	Poaceae	1	
711	<i>Festuca occidentalis</i>	Western fescue	Poaceae	1	
139	<i>Festuca pratensis</i> *	Meadow fescue	Poaceae		
140	<i>Festuca rubra</i>	Red fescue	Poaceae		
141	<i>Fragaria chiloensis</i>	Coastal strawberry	Rosaceae	1	
142	<i>Fragaria vesca</i>	Wild strawberry	Rosaceae	1	
527	<i>Fragaria virginiana</i>	Field strawberry	Rosaceae	1	1

Lower White River Plant list (*non-native)

LWR BMA Earth Day
Observed Bioblitz
2006 007

<u>ID</u>	<u>Scientific Name</u>	<u>Common Name</u>	<u>Plant Family</u>	2006	007
143	<i>Fraxinus latifolia</i>	Oregon ash	Oleaceae	1	1
144	<i>Galanthus nivilis</i> *	Snowdrop	Liliaceae		
145	<i>Galium aparine</i> (606)	Cleavers	Rubiaceae	1	1
146	<i>Galium cymosum</i>	Pacific bedstraw	Rubiaceae		
147	<i>Galium parisiense</i> *	Wall bedstraw	Rubiaceae		
148	<i>Galium trifidum</i>	Small bedstraw	Rubiaceae		
149	<i>Galium triflorum</i> (607)	Fragrant bedstraw	Rubiaceae	1	1
150	<i>Gaultheria shallon</i>	Salal	Ericaceae	1	1
151	<i>Geranium dissectum</i> *	Cut-leaf geranium	Geraniaceae	1	1
152	<i>Geranium molle</i> *	Dovefoot geranium	Geraniaceae	1	1
153	<i>Geranium robertianum</i> *	Stinky Bob	Geraniaceae	1	1
154	<i>Geum macrophyllum</i>	Large-leaved avens	Rosaceae	1	1
155	<i>Glaux maritima</i>	Sea milkwort	Primulaceae		
156	<i>Glechoma hederacea</i> *	Creeping Charlie	Lamiaceae	1	
157	<i>Glyceria borealis</i> (502)	Northern mannagass	Poaceae	1	
158	<i>Glyceria elata</i>	Tall mannagrass	Poaceae		
159	<i>Glyceria grandis</i>	Reed mannagrass	Poaceae		
725	<i>Glyceria</i> sp.	Mannagrass	Poaceae	1	
160	<i>Gnaphalium canescens</i>	White cudweed	Asteraceae		
161	<i>Gnaphalium uliginosum</i> *	Marsh cudweed	Asteraceae		
162	<i>Goodyera oblongifolia</i>	Rattlesnake-plantain	Orchidaceae		1
163	<i>Grindelia integrifolia</i>	Coastal gumweed	Asteraceae		
730	<i>Gymnocarpium dryopteris</i>	Oak fern	Polypodiaceae	1	
164	<i>Habenaria unalascensis</i>	Alaska rein-orchid	Orchidaceae		
165	<i>Hackelia deflexa</i>	Nodding forget-me-not	Boraginaceae		
166	<i>Hedera helix</i> *	English ivy	Araliaceae	1	1
167	<i>Heracleum lanatum</i>	Cow parsnip	Apiaceae	1	1
168	<i>Hieracium albiflorum</i>	White-flowered hawkweed	Asteraceae	1	1
169	<i>Hippuris vulgaris</i>	Mare's tail	Hippuridaceae		
170	<i>Holcus lanatus</i> *	Common velvet grass	Poaceae	1	1
171	<i>Holodiscus discolor</i>	Ocean spray	Rosaceae	1	
172	<i>Hordeum brachyantherum</i>	Meadow barley	Poaceae		
173	<i>Hordeum jubatum</i>	Foxtail barley	Poaceae		
174	<i>Humulus lupulus</i> *	Hops	Moraceae		1
738	<i>Hyacinthoides hispanica</i> *	Spanish squill	Liliaceae		1
175	<i>Hydrocotyle ranunculoides</i>	Marsh penny-wort	Apiaceae		
176	<i>Hydrophyllum tenuipes</i>	Pacific waterleaf	Hydrophyllaceae	1	1
177	<i>Hypericum perforatum</i> *	Klamath weed	Hypericaceae	1	1
178	<i>Hypochaeris glabra</i> *	Smooth cat's-ear	Asteraceae		
179	<i>Hypochaeris radicata</i> *	Hairy cat's-ear	Asteraceae	1	1
180	<i>Ilex aquifolium</i> *	English holly	Aquifoliaceae	1	1
181	<i>Impatiens capensis</i>	Orange balsam	Balsaminaceae		
182	<i>Impatiens noli-tangere</i>	Touch-me-not	Balsaminaceae		
183	<i>Iris pseudacorus</i> *	Yellow flag	Iridaceae		
184	<i>Jaumea carnosa</i>	Fleshy jaumea	Asteraceae		
185	<i>Juncus acuminatus</i>	Tapered rush	Juncaceae		
186	<i>Juncus articulatus</i>	Jointed rush	Juncaceae		
187	<i>Juncus balticus</i>	Baltic rush	Juncaceae		
188	<i>Juncus bolanderi</i>	Bolander's rush	Juncaceae		
189	<i>Juncus bufonius</i> *	Toad rush	Juncaceae	1	
190	<i>Juncus effusus</i>	Soft rush	Juncaceae	1	1
191	<i>Juncus ensifolius</i>	Daggerleaf rush	Juncaceae	1	
192	<i>Juncus gerardii</i>	Mud rush	Juncaceae		
729	<i>Juncus</i> sp.		Juncaceae		1

Lower White River Plant list (*non-native)

Earth Day
LWR BMA Bioblitz
Observed Observed2
2006 007

<u>ID</u>	<u>Scientific Name</u>	<u>Common Name</u>	<u>Plant Family</u>	2006	007
193	<i>Juncus tenuis</i>	Slender rush	Juncaceae	1	
194	<i>Lactuca biennis</i>	Tall blue lettuce	Asteraceae		
195	<i>Lactuca muralis</i> * (523)	Wall lettuce	Asteraceae	1	1
196	<i>Lactuca serriola</i> *	Prickly lettuce	Asteraceae		
197	<i>Lamium purpureum</i> *	Red dead-nettle	Lamiaceae		1
198	<i>Lapsana communis</i> *	Nipplewort	Asteraceae	1	1
199	<i>Lathyrus latifolius</i> *	Everlasting peavine	Fabaceae	1	
200	<i>Lathyrus polyphyllus</i>	Leafy peavine	Fabaceae		
201	<i>Lemna minor</i>	Water lentil	Lemnaceae	1	
202	<i>Leontodon nudicaulis</i> *	Hairy hawkbit	Asteraceae		
744	<i>Lepidium campestre</i> *	Pepper weed	Brassicaceae		1
203	<i>Lepidium virginicum</i> *	Tall pepperweed	Brassicaceae		
752	<i>Lepridium campestre</i>				1
204	<i>Lilaeopsis occidentalis</i>	Lilaeopsis	Apiaceae		
205	<i>Lilium columbianum</i>	Tiger lily	Liliaceae		
206	<i>Linnaea borealis</i>	Twinflower	Caprifoliaceae	1	
751	<i>Liquistrium</i> sp.				1
207	<i>Listera cordata</i>	Heart-leaved twayblade	Orchidaceae		
208	<i>Lolium multiflorum</i> *	Italian ryegrass	Poaceae	1	
209	<i>Lolium perenne</i> *	English ryegrass	Poaceae	1	
210	<i>Lonicera ciliosa</i> (712)	Orange honeysuckle	Caprifoliaceae	1	1
211	<i>Lonicera hispidula</i>	California honeysuckle	Caprifoliaceae		
212	<i>Lonicera involucrata</i>	Twinberry	Caprifoliaceae	1	1
213	<i>Lotus corniculatus</i> *	Birdsfoot trefoil	Fabaceae		1
214	<i>Lotus crassifolius</i>	Big deervetch	Fabaceae		
215	<i>Lotus micranthus</i>	Miniature lotus	Fabaceae	1	
216	<i>Lotus purshiana</i>	Spanish clover	Fabaceae		
217	<i>Ludwigia palustris</i>	False loosestrife	Onagraceae		
218	<i>Lupinus bicolor</i>	Two-color lupine	Fabaceae		1
219	<i>Lupinus micranthus</i>	Small-flowered lupine	Fabaceae		
220	<i>Lupinus polyphyllus</i>	Big-leaf lupine	Fabaceae		
221	<i>Lupinus rivularis</i>	Streambank lupine	Fabaceae		
222	<i>Luzula campestris</i>	Field woodrush	Juncaceae		1
223	<i>Luzula parviflora</i>	Small-flowered woodrush	Juncaceae	1	1
224	<i>Lychnus alba</i> *	White campion	Caryophyllaceae		
225	<i>Lychnus coronaria</i> *	Rose campion	Caryophyllaceae		
226	<i>Lycopus americanus</i>	Water hoarhound	Lamiaceae		
227	<i>Lycopus uniflorus</i>	Northern bugleweed	Lamiaceae		
228	<i>Lysichiton americanum</i>	Skunk cabbage	Araceae		
229	<i>Madia madioides</i>	Woodland tarweed	Asteraceae		
230	<i>Madia sativa</i>	Coast tarweed	Asteraceae		
231	<i>Maianthemum dilatatum</i>	False lily-of-the-valley	Liliaceae	1	1
728	<i>Malus fusca</i>	Pacific crabapple	Rosaceae	1	1
232	<i>Malva neglecta</i>	Dwarf mallow	Malvaceae		
233	<i>Matricaria matricarioides</i> *	Pineapple weed	Asteraceae		
234	<i>Medicago hispida</i> *	Alfalfa	Fabaceae		
235	<i>Medicago lupulina</i> *	Black medic	Fabaceae	1	
236	<i>Melilotus alba</i> *	White sweet-clover	Fabaceae	1	
237	<i>Melilotus indica</i>	Small-fl. yellow sweet-clover	Fabaceae		
238	<i>Melilotus officinalis</i> *	Yellow sweet-clover	Fabaceae		
239	<i>Mentha arvensis</i>	Field mint	Lamiaceae		
240	<i>Mentha piperita</i> *	Peppermint	Lamiaceae		
241	<i>Mertensia paniculata</i>	Tall bluebells	Boraginaceae		
242	<i>Mimulus guttatus</i>	Common monkey-flower	Scrophulariaceae		

Lower White River Plant list (*non-native)

Earth Day
LWR BMA Bioblitz
Observed Observed2
2006 007

<u>ID</u>	<u>Scientific Name</u>	<u>Common Name</u>	<u>Plant Family</u>	Observed 2006	Observed2 007
243	Mimulus moschatus	Musk-flower	Scrophulariaceae		
244	Mitella caulescens (731)	Leafy miterwort	Saxifragaceae	1	
746	Moenchia erecta (Kozloff)	Munchkin chickweed	Caryophyllaceae		1
245	Monotropa uniflora	Single-flowered indian pipe	Ericaceae	1	
246	Montia dichotoma	Dwarf montia	Portulacaceae		
743	Montia fontana	Water chickweed	Portulacaceae		1
750	Montia parvigez (Kozloff)		Portulacaceae		1
247	Montia perfoliata	Miner's lettuce	Portulacaceae		1
248	Montia siberica	Candyflower	Portulacaceae	1	1
249	Muscari botryoides*	Grape hyacinth	Liliaceae		1
250	Myosotis discolor* (659)	Yellow & blue forget-me-not	Boraginaceae	1	1
251	Myosotis laxa	Small-flowered forget-me-not	Boraginaceae	1	1
252	Myosotis scorpioides* (601)	Common forget-me-not	Boraginaceae	1	
736	Myosotis sylvatica	Forget-me-not	Boraginaceae		1
253	Myosotis verna	Spring forget-me-knot	Boraginaceae		
254	Myriophyllum hippuroides	Western milfoil	Haloragaceae		
255	Narcissus pseudonarcissus*	Daffodil	Amaryllidaceae		1
256	Navaretia squarrosa	Skunkweed	Polemoniaceae		
257	Nemophila parviflora (604)	Small-flowered nemophila	Hydrophyllaceae	1	1
258	Nitrophilla occidentalis	Nitrophilla	Chenopodiaceae		
259	Nuphar polysepalum	Pond lily	Nymphaeaceae		
260	Oemlaria cerasiformus	Indian plum	Rosaceae	1	1
261	Oenanthe sarmentosa	Water parsley	Apiaceae	1	
509	Oenothera biennis	Evening primrose	Onagraceae	1	1
262	Oplopanax horridum	Devil's club	Araliaceae	1	1
263	Orthocarpus pusillus	Dwarf owl-clover	Scrophulariaceae		
533	Osmorhiza chilensis (710)	Sweet cicely	Apiaceae	1	1
264	Osmorhiza occidentalis	Western sweet-cicely	Apiaceae	1	
651	oxalis oregana	Oregon oxalis		1	
701	oxalis oregana	Oregon oxalis		1	1
265	Pachistima myrsinites	Mountain box	Celastraceae		
266	Panicum miliaceum*	Broomcorn millet	Poaceae		
267	Parentucellia viscosa*	Yellow parentucellia	Scrophulariaceae		
268	Petasites frigidus	Coltsfoot	Asteraceae	1	
269	Phacelia nemoralis	Woodland phacelia	Hydrophyllaceae		
270	Phalaris arundinacea*	Reed canarygrass	Poaceae	1	1
679	Philadelphus lewisii (652)	Mock-orange		1	1
271	Phleum pratense*	Timothy	Poaceae		
272	Physocarpus capitatus (526)	Pacific ninebark	Rosaceae	1	1
273	Picea engalmanii	Engelmann spruce	Pinaceae		
274	Picea sitchensis	Sitka spruce	Pinaceae	1	
275	Pinus contorta	Lodgepole pine	Pinaceae		1
741	Pinus sp.	2 needle pine	Pinaceae		1
276	Plantago lanceolata*	English plantain	Plantaginaceae	1	1
277	Plantago major*	Common plantain	Plantaginaceae	1	1
278	Plantago maritima	Seaside plantain	Plantaginaceae		
279	Poa annua	Annual bluegrass	Poaceae	1	1
735	Poa bulbosa*	Bulbous bluegrass	Poaceae		1
280	Poa compressa	Canadian bluegrass	Poaceae		
281	Poa palustris* (608/655/675/705)	Fowl bluegrass (meadow grass)	Poaceae	1	
282	Poa pratensis*	Kentucky bluegrass	Poaceae	1	
283	Poa trivialis	Roughstalk bluegrass	Poaceae	1	
731	Polygonum 1. bohemicum		Polygonaceae		1
284	Polygonum amphibium	Water smartweed	Polygonaceae		

Lower White River Plant list (*non-native)

Earth Day
LWR BMA Bioblitz
Observed Observed2
2006 007

<u>ID</u>	<u>Scientific Name</u>	<u>Common Name</u>	<u>Plant Family</u>	2006	007
285	<i>Polygonum aviculare*</i>	Doorweed	Polygonaceae		
286	<i>Polygonum convolvulus*</i>	Black bindweed	Polygonaceae		
287	<i>Polygonum cuspidatum*</i>	Japanese knotweed	Polygonaceae	1	
288	<i>Polygonum lapathifolium*</i>	Willow weed	Polygonaceae		
289	<i>Polygonum persicaria*</i>	Heartweed	Polygonaceae		
290	<i>Polypodium glycyrrhiza</i>	Licorice fern	Polypodiaceae	1	1
291	<i>Polystichum munitum</i>	Sword fern	Polypodiaceae	1	1
292	<i>Populus alba*</i>	White poplar	Salicaceae		1
293	<i>Populus nigra*</i>	Lombardy poplar	Salicaceae		
294	<i>Populus tremuloides</i>	Quaking aspen	Salicaceae	1	
295	<i>Populus trichocarpa</i> (511)	Black cottonwood	Salicaceae	1	1
296	<i>Potamogeton crispus</i>	Curled pondweed	Potamogetonaceae		
297	<i>Potamogeton epihydrus</i>	Nuttal pondweed	Potamogetonaceae		
298	<i>Potamogeton foliosus</i>	Closed-leaved pondweed	Potamogetonaceae		
299	<i>Potamogeton natans</i>	Floating-leaf pondweed	Potamogetonaceae		
300	<i>Potamogeton pectinatus</i>	Fennel-leaf pondweed	Potamogetonaceae		
301	<i>Potentilla anserina</i>	Common silverweed	Rosaceae		
302	<i>Potentilla gracilis</i>	Graceful cinquefoil	Rosaceae		
303	<i>Potentilla pacifica</i>	Pacific silverweed	Rosaceae	1	
304	<i>Potentilla palustris</i>	Marsh cinquefoil	Rosaceae		
305	<i>Prunella vulgaris</i>	Self-heal	Lamiaceae	1	1
306	<i>Prunus avium*</i>	Sweet cherry	Rosaceae	1	1
753	<i>Prunus cerasus</i>		Rosaceae		1
307	<i>Prunus domestica</i>	Plum	Rosaceae		
308	<i>Prunus emarginata</i>	Bitter cherry	Rosaceae		
309	<i>Prunus laurocerasus*</i>	English laurel	Rosaceae		
721	<i>Prunus sp.</i>	Cherry	Rosaceae	1	1
310	<i>Prunus virginiana</i>	Chokecherry	Rosaceae		
311	<i>Pseudotsuga menziesii</i>	Douglas fir	Pinaceae	1	1
312	<i>Psoralea lanceolata</i>	Dune scurf-pea	Fabaceae		
313	<i>Pteridium aquilinum</i>	Bracken	Polypodiaceae	1	1
314	<i>Puccinellia nuttalliana</i>	Nuttall's alkaligrass	Poaceae		
315	<i>Puccinellia pauciflora</i>	Weak alkaligrass	Poaceae		
316	<i>Pyrola asarifolia</i> (707)	Pink wintergreen	Ericaceae	1	
317	<i>Pyrus communis</i>	Pear	Rosaceae	1	
318	<i>Pyrus fusca</i>	Crabapple	Rosaceae		
319	<i>Pyrus malus*</i> (657)	Ornamental/cultivated Apple	Rosaceae	1	1
513	<i>Quercus sp.</i>	Black oak	Fagaceae	1	
320	<i>Ranunculus acris*</i> (515/603)	Meadow buttercup	Ranunculaceae	1	1
321	<i>Ranunculus occidentalis</i>	Western buttercup	Ranunculaceae		
322	<i>Ranunculus repens*</i>	Creeping buttercup	Ranunculaceae	1	1
323	<i>Ranunculus scleratus</i>	Blister buttercup	Ranunculaceae		
324	<i>Ranunculus uncinatus</i>	Little buttercup	Ranunculaceae	1	
325	<i>Raphanus sativus*</i>	Wild radish	Brassicaceae		
326	<i>Rhamnus purshiana</i>	Cascara	Rhamnaceae	1	1
327	<i>Rhus diversiloba</i>	Poison oak	Anacardiaceae		
328	<i>Ribes divaricatum</i> (521/623))	Coast black gooseberry	Grossulariaceae	1	1
329	<i>Ribes lacustre</i>	Prickly currant	Grossulariaceae	1	
740	<i>Ribes lobbii</i>	Gummy gooseberry	Grossulariaceae		1
330	<i>Ribes sanguinum</i>	Red-flowered currant	Grossulariaceae		1
331	<i>Rorippa columbiae</i>	Columbia yellowcress	Brassicaceae		
332	<i>Rorippa curvisiliqua</i>	Western yellowcress	Brassicaceae		
333	<i>Rorippa islandica</i>	Marsh yellowcress	Brassicaceae		
334	<i>Rosa gymnocarpa</i>	Baldhip rose	Rosaceae	1	1

Lower White River Plant list (*non-native)

ID	Scientific Name	Common Name	Plant Family	LWR BMA	Earth Day
				Observed 2006	Bioblitz Observed2 007
703	<i>Rosa multiflora</i> *	Japanese rambler rose	Rosaceae	1	1
335	<i>Rosa nutkana</i>	Nootka rose	Rosaceae	1	1
336	<i>Rosa pisocarpa</i>	Clustered wild rose	Rosaceae		
748	<i>Rosa</i> sp.	Ornamental rose	Rosaceae		1
337	<i>Rubus discolor</i> *	Himalayan blackberry	Rosaceae	1	1
338	<i>Rubus laciniatus</i> *	Evergreen blackberry	Rosaceae	1	1
339	<i>Rubus leucodermis</i>	Blackcap	Rosaceae	1	1
340	<i>Rubus parviflorus</i>	Thimbleberry	Rosaceae	1	1
341	<i>Rubus spectabilis</i>	Salmonberry	Rosaceae	1	1
342	<i>Rubus ursinus</i>	Wild blackberry	Rosaceae	1	1
343	<i>Rumex acetocella</i> *	Sheep sorrel	Polygonaceae	1	1
344	<i>Rumex crispus</i> *	Sour dock	Polygonaceae	1	1
345	<i>Rumex maritimus</i>	Golden dock	Polygonaceae		
346	<i>Rumex obtusifolius</i> *	Broad-leaved dock	Polygonaceae	1	1
347	<i>Rumex occidentalis</i>	Western dock	Polygonaceae		
348	<i>Ruppia maritima</i>	Ditchgrass	Ruppiaceae		
349	<i>Sagittaria latifolia</i>	Broadleaf arrowhead	Alismataceae		
350	<i>Salicornia virginica</i>	Pickleweed	Chenopodiaceae		
351	<i>Salix alba</i> *	White willow	Salicaceae		
352	<i>Salix hookeriana</i> (528)	Hooker's willow	Salicaceae	1	
353	<i>Salix lasiandra</i>	Pacific willow	Salicaceae	1	1
354	<i>Salix scouleriana</i>	Scouler willow	Salicaceae		1
355	<i>Salix sitchensis</i>	Sitka willow	Salicaceae		1
356	<i>Salix</i> sp. (503)	Willow	Salicaceae	1	1
357	<i>Sambucus cerulea</i>	Blue elderberry	Caprifoliaceae		
358	<i>Sambucus racemosa</i>	Red elderberry	Caprifoliaceae	1	1
359	<i>Sanicula crassicaulis</i>	Pacific sanicle	Apiaceae		
360	<i>Satureja douglasii</i>	Yerba buena	Lamiaceae		
361	<i>Scirpus acutus</i>	Hard-stem bulrush	Cyperaceae		
362	<i>Scirpus americanus</i>	Three-square bulrush	Cyperaceae		
724	<i>Scirpus cyperinus</i>	Woolgrass	Cyperaceae	1	
363	<i>Scirpus maritimus</i>	Seacoast bulrush	Cyperaceae		
364	<i>Scirpus microcarpus</i>	Small-flowered bulrush	Cyperaceae	1	
365	<i>Scirpus validus</i>	Soft-stem bulrush	Cyperaceae		
366	<i>Scleranthus annuus</i> *	Annual knawel	Caryophyllaceae		
367	<i>Scutellaria galericulata</i>	Marsh scullcap	Lamiaceae		
368	<i>Scutellaria lateriflora</i>	Mad-dog skullcap	Lamiaceae		
516	<i>Sedum divergens</i>		Crassulaceae	1	
518	<i>Sedum lanceolatum</i>		Crassulaceae	1	
369	<i>Senecio jacobaea</i> * (600)	Tansy ragwort	Asteraceae	1	1
370	<i>Senecio sylvaticus</i> *	Wood groundsel	Asteraceae		
371	<i>Senecio vulgaris</i> *	Common groundsel	Asteraceae		1
372	<i>Setaria lutescens</i> *	Yellow foxtail	Poaceae		
373	<i>Sisymbrium altissimum</i> *	Jim Hill mustard	Brassicaceae		
374	<i>Sisymbrium officinale</i> *	Hedge mustard	Brassicaceae	1	1
375	<i>Smilacina racemosa</i>	False Solomon's seal	Liliaceae	1	1
376	<i>Smilacina stellata</i>	Star-flowered Solomon's seal	Liliaceae	1	1
377	<i>Solanum dulcamara</i> *	Bittersweet nightshade	Solanaceae	1	1
378	<i>Solanum nigrum</i>	Black nightshade	Solanaceae	1	
379	<i>Solanum saccaroides</i> *	Hairy nightshade	Solanaceae		
380	<i>Solidago canadensis</i>	Meadow goldenrod	Asteraceae		
381	<i>Sonchus arvensis</i> *	Field sowthistle	Asteraceae	1	
382	<i>Sonchus asper</i> *	Prickly sowthistle	Asteraceae		
383	<i>Sorbus aucuparia</i> *	European mountain-ash	Rosaceae	1	1

Lower White River Plant list (*non-native)

Earth Day
LWR BMA Bioblitz
Observed Observed2
2006 007

<u>ID</u>	<u>Scientific Name</u>	<u>Common Name</u>	<u>Plant Family</u>	2006	007
384	Sparganium emersum	Simplestem bur-reed	Sparganiaceae		
385	Sparganium minimum	Small bur-reed	Sparganiaceae		
386	Spergula arvensis*	Cornspurry	Caryophyllaceae		
387	Spergularia canadensis	Winged sandspurry	Caryophyllaceae		
388	Spergularia macrotheca	Beach sandspurry	Caryophyllaceae		
389	Spergularia marina	Saltmarsh sandspurry	Caryophyllaceae		
390	Spergularia rubra*	Red sandspurry	Caryophyllaceae		
391	Spiraea douglasii	Hardhack	Rosaceae	1	1
392	Spiranthes romanzoffiana	Hooded ladies-tresses	Orchidaceae		
393	Spirodela polyrhiza	Great duckweed	Lemnaceae	1	
394	Stachys cooleyae	Cooley's hedge-nettle	Lamiaceae	1	1
395	Stachys palustris	Swamp hedge-nettle	Lamiaceae		
678	Stachys sp. (704)	Hedge nettle	Lamiaceae	1	1
739	Stellaria calycantha	Northern starwort	Caryophyllaceae		1
396	Stellaria crispa (658/718)	Crisped starwort	Caryophyllaceae	1	
397	Stellaria graminea*	Lesser starwort	Caryophyllaceae		
398	Stellaria humifusa	Spreading starwort	Caryophyllaceae		
399	Stellaria longifolia	Long-leaved starwort	Caryophyllaceae		
400	Stellaria longipes	Long-stalked starwort	Caryophyllaceae		
401	Stellaria media* (605)	Common chickweed	Caryophyllaceae	1	1
402	Streptopus amplexifolius	Clasping-leaved twisted-stalk	Liliaceae	1	
403	Suaeda maritima	Herbaceous seablite	Chenopodiaceae		
404	Symphoricarpos albus	Common snowberry	Caprifoliaceae	1	1
405	Symphoricarpos mollis	Creeping snowberry	Caprifoliaceae	1	
406	Synthyris reniformis	Snow-queen	Scrophulariaceae		
407	Tanacetum vulgare*	Common tansy	Asteraceae	1	1
408	Taraxacum officinale*	Dandelion	Asteraceae	1	1
409	Taxus brevifolia	Western yew	Taxaceae		
410	Teesdalia nudicaulis*	Teesdalia	Brassicaceae	1	1
411	Tellima grandiflora	Fringecup	Saxifragaceae	1	1
412	Thuja plicata	Western red cedar	Cupressaceae	1	1
413	Tiarella trifoliata	Foamflower	Saxifragaceae		
414	Tolmiea menziesii	Youth-on-age	Saxifragaceae	1	1
415	Tragopogon dubius*	Oysterplant	Asteraceae		
416	Trientalis arctica	Northern star-flower	Primulaceae		
417	Trientalis latifolia	Broadleaved starflower	Primulaceae	1	1
418	Trifolium arvense*	Hare's-foot	Fabaceae		
419	Trifolium dubium*	Least hop clover	Fabaceae	1	1
420	Trifolium hybridum*	Alsike clover	Fabaceae		
421	Trifolium pratense*	Red clover	Fabaceae	1	1
422	Trifolium procumbens*	Hop clover	Fabaceae		
423	Trifolium repens*	White clover	Fabaceae	1	1
723	Trifolium sp.	Clover	Fabaceae		1
424	Trifolium subterraneum*	Subterranean clover	Fabaceae		
425	Trifolium wormskjoldii	Springbank clover	Fabaceae		
426	Triglochin maritimum	Seaside arrowgrass	Juncaginaceae		
427	Trillium ovatum	White trillium	Liliaceae	1	1
428	Trisetum canescens	Tall trisetum	Poaceae		
429	Trisetum cernuum (654/708)	Nodding trisetum	Poaceae	1	
430	Tsuga heterophylla	Western hemlock	Pinaceae	1	1
431	Typha latifolia	Common cattail	Typhaceae	1	1
432	Ulex europaeus*	Gorse	Fabaceae		
433	Urtica dioica	Stinging nettle	Urticaceae	1	1
434	Urtica urens*	Dog nettle	Urticaceae		

Lower White River Plant list (*non-native)

Earth Day
LWR BMA Bioblitz
Observed Observed2
2006 007

<u>ID</u>	<u>Scientific Name</u>	<u>Common Name</u>	<u>Plant Family</u>	2006	007
435	<i>Utricularia vulgaris</i>	Common bladderwort	Lentibulariaceae		
436	<i>Vaccinium ovatum</i>	Evergreen huckleberry	Ericaceae		
437	<i>Vaccinium parvifolium</i>	Red huckleberry	Ericaceae	1	1
438	<i>Verbascum blattaria</i> *	Moth mullein	Scrophulariaceae		1
439	<i>Verbascum thapsus</i> *	Common mullein	Scrophulariaceae	1	1
440	<i>Veronica americana</i>	American brooklime	Scrophulariaceae	1	1
520	<i>Veronica anagallis-aquatica</i>		Scrophulariaceae	1	
441	<i>Veronica arvensis</i> * (662)	Field veronica	Scrophulariaceae	1	1
734	<i>Veronica hederifolia</i> *	Ivy-leaved speedwell	Scrophulariaceae		1
442	<i>Veronica officinalis</i> * (706)	Common speedwell	Scrophulariaceae	1	1
726	<i>Veronica peregrina</i>	Purslane speedwell	Scrophulariaceae		1
443	<i>Veronica scutellata</i>	Marsh speedwell	Scrophulariaceae		
444	<i>Veronica serpyllifolia</i>	Thyme-leaf speedwell	Scrophulariaceae	1	
715	<i>Vicia americana</i>	American vetch	Fabaceae	1	
445	<i>Vicia cracca</i> *	Cow vetch	Fabaceae	1	
446	<i>Vicia gigantea</i>	Giant vetch	Fabaceae		
447	<i>Vicia hirsuta</i> *	Tiny vetch	Fabaceae	1	
448	<i>Vicia sativa</i> *	Common vetch	Fabaceae	1	1
749	<i>Vicia sp.</i>		Fabaceae		1
745	<i>Vicia tetrasperma</i>	Tiny vetch	Fabaceae		1
449	<i>Vicia villosa</i> *	Hairy vetch	Fabaceae		
450	<i>Vinca major</i> *	Periwinkle	Apocynaceae		
719	<i>Viola glabella</i>	Stream violet	Violaceae	1	
451	<i>Viola sempervirens</i>	Evergreen violet	Violaceae		
452	<i>Wolffia punctata</i>	Water meal	Lemnaceae		
453	<i>Zostera marina</i>	Wide-blade eelgrass	Zosteraceae		

Total species 228 196