

## KONSTANTIN ANDREEV (1918-1986), Kursk

Studied at The Leningrad Repin Institute of Painting, Sculpture and Architecture, The Odessa Art College.

Works are represented in The Deineka Regional Art Gallery (Kursk), The Science and Research Museum of the Russian Academy of Arts (St. Petersburg), private collections in Russia and abroad.



411-002. Konstantin Andreev.  
MAN'S PORTRAIT  
1950s, oil on canvas, 107,5 × 65,5 cm



411-003. Konstantin Andreev.  
MINER  
1950s, oil on canvas, 92 × 60 cm



411-007. Konstantin Andreev.  
PORTRAIT OF OLD MINER  
1960s, oil on cardboard, 74 × 55 cm



411-011. Konstantin Andreev.  
MINER'S BATH  
1960s, oil on canvas, 48 × 53 cm



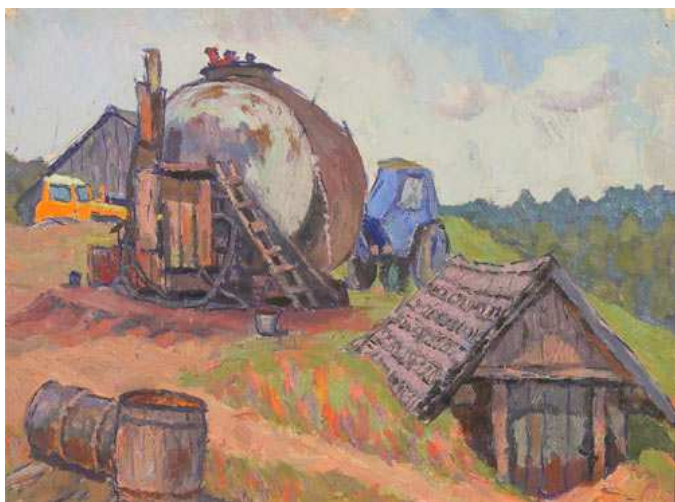
411-008. Konstantin Andreev.  
OPEN-PIT MINE  
1950s, oil on canvas, 68 × 103.5 cm



411-033. Konstantin Andreev.  
GIRL IN BLUE DRESS  
1960s, oil on cardboard, 52 × 39 cm



411-071. Konstantin Andreev.  
AFTER WORK  
1960s, oil on cardboard, 70 × 53 cm



411-056. Konstantin Andreev.  
VILLAGE FUEL SOURCE  
1960s, oil on paper, 32.5 × 44 cm



411-057. Konstantin Andreev.  
TRACTOR  
1960s, oil on paper, 30 × 42 cm



411-076. Konstantin Andreev.  
V.I. LENIN AND CHILDREN  
1960s, oil on canvas, 129.5 × 120 cm



411-107. Konstantin Andreev.  
AT THE MINE  
1970s, oil on cardboard, 48 × 33 cm

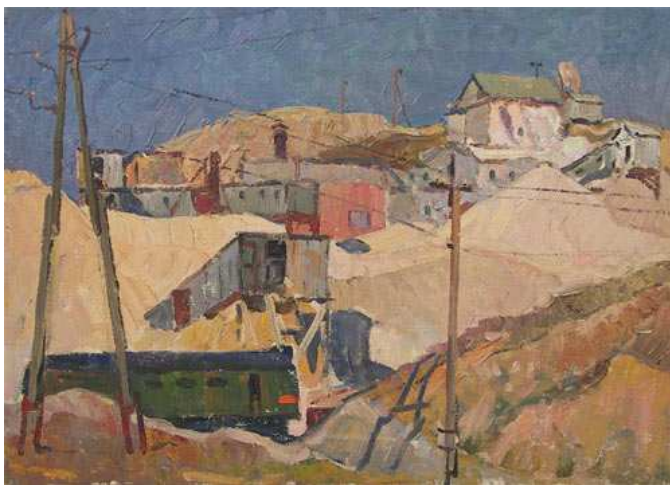


411-113. Konstantin Andreev.  
MOUNTAINS  
1960s, oil on canvas, 65 × 49 cm

## IVAN MISHIN (1928-2001), ELETS (LIPETSK REGION)

Studied at the Elets Art College.

Works are represented in The Deineka Regional Art Gallery (Kursk), The Museum of Fine Arts (Elets), The Museum of Fine Arts (Tula), private collections in Russia and USA.



347-003. Ivan Mishin.  
FACTORY  
1977, oil on canvas, 50 × 69 cm



347-009. Ivan Mishin.  
TEA BREWING  
1960s, oil on cardboard, 70 × 49.5 cm



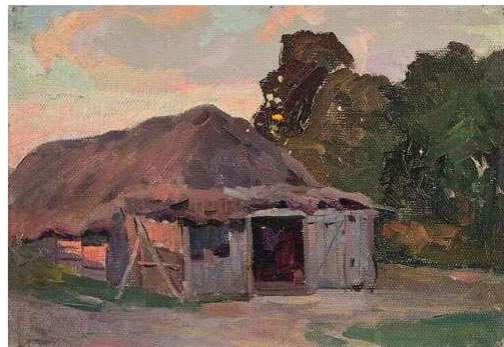
347-011. Ivan Mishin.  
GIRL IN A YELLOW PANAMA HAT  
1960s, oil on cardboard, 68.5 × 49 cm



347-014. Ivan Mishin.  
WAITING  
1959, oil on cardboard, 44 × 38.5 cm



347-015. Ivan Mishin.  
ON THE MARKET  
1960s, oil on cardboard, 22 × 45.5 cm



347-033. Ivan Mishin.  
BARN  
1960s, oil on cardboard, 26.5 × 36 cm



347-035. Ivan Mishin.  
OPEN PIT  
1960s, oil on cardboard, 33 × 49 cm



347-045. Ivan Mishin.  
RED ARMY MAN  
1960s, oil on canvas, 70 × 63 cm



347-057. Ivan Mishin.  
GIRL IN RED  
1975, oil on canvas, 60 × 43 cm

## **SEMYON VINOGRADOV (born in 1936), IZHEVSK (UDMURTIA)**

Studied at The Kazan Art College, The Mozhginsk Pedagogical College.

Works are represented in Kustodiev Art Gallery in Astrakhan, The Collection of the Ministry of Culture of Russia, The Izhevsk Fine Arts Museum, The National Art Museum (Kiev), The Udmurtian Republican Fine Arts Museum, private collections in Russia and abroad.



385-001. Semyon Vinogradov.  
THE GRANARY  
1950s, oil on board, 24.5 × 33 cm



385-004. Semyon Vinogradov.  
IN THE HOUSE  
1950s, oil on board, 36.5 × 49.5 cm



385-012. Semyon Vinogradov.  
BOY  
1950s, oil on paper, 34 × 49 cm



385-010. Semyon Vinogradov.  
HARVESTING  
1950s, oil on canvas, 34 × 44.5 cm



385-011. Semyon Vinogradov.  
WOMAN  
1950s, mixed, 38.5 × 16.5 cm



385-024. Semyon Vinogradov.  
IN THE YARD  
1950s, oil on board, 73.5 × 46 cm



385-047. Semyon Vinogradov.  
DAY OF SPRING  
1969, oil on canvas, 135 × 208 cm



385-026. Semyon Vinogradov.  
AUTUMN. POTATO FIELD  
1950s, oil on board, 56 × 70 cm



385-021. Semyon Vinogradov.  
AT THE FIELD  
1960s, oil on board, 35 × 50 cm



385-037. Semyon Vinogradov.  
EVENING  
1960s, oil on canvas, 75 × 98 cm



385-034. Semyon Vinogradov.  
FIRST ROW PLOWED  
1950s, oil on canvas, 54.5 × 83.5 cm

## ANDREY KLUSHEV (born in 1921), PENZA

Studied at Penza Art College, The Kharkov Art Institute, The Vrubel Fine Arts College in Omsk.

Works are represented in The Savitsky Regional Art Gallery (Penza), The State University (Penza), private collections in Russia and abroad



333-006. Andrey Klushev.  
PORTRAIT OF THE MILKMAID ROSA KHRAMOVA  
1950s, oil on cardboard, 48 × 33 cm



333-014. Andrey Klushev.  
FEED PROVISION  
1960, oil on cardboard, 17.5 × 49.5 cm



## LEONTY ZUDOV (born in 1928), NIZHNY TAGIL

Studied at The Leningrad Repin Institute of Painting, Sculpture and Architecture.

Works are represented in The Ekaterinburg Fine Art Museum, The Art Museum (Neviamsk), The Regional Art Museum (Briansk), The State Museum of Fine Arts (Nizhny Tagil), The State United Art Museum (Kostroma)



399-035. Leonty Zudov.  
SCENE FROM THE VILLAGE LIFE  
1995, oil on canvas, 52.5 × 77 cm



399-028. Leonty Zudov.  
A VILLAGE  
1960s, oil on cardboard, 49 × 73 cm



399-065. Leonty Zudov.  
GRAIN GROWERS  
1991, oil on canvas, 89.5 × 149 cm



399-078. Leonty Zudov.  
HORSES WITH CHILDREN  
1950s, oil on canvas, 27 × 47 cm



399-087. Leonty Zudov.  
GATHERING POTATOES  
1968, oil on cardboard, 49 × 70 cm



399-089. Leonty Zudov.  
LENIN AND CHILDREN  
1950s, oil on cardboard, 47 × 69 cm



399-090. Leonty Zudov.  
LENIN WITH CHILDREN  
1950s, oil on cardboard, 47 × 69 cm

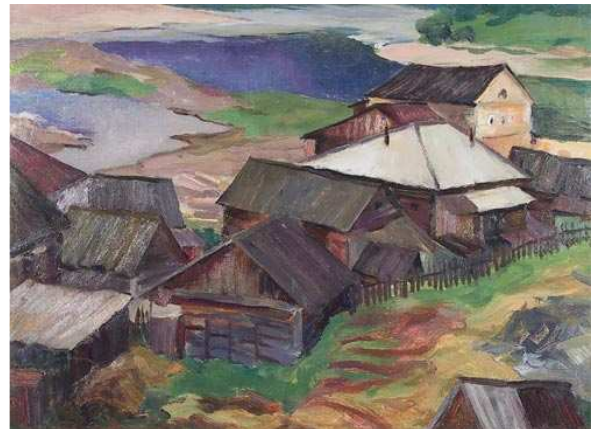
## YURI PLATONOV (born in 1939), NIZHNY TAGIL

Studied at The Nizhny Tagil State Pedagogical Institute.

Works are represented in Ekaterinburg Fine Art Museum, The State Museum of Fine Arts (Nizhny Tagil), private collections in Russia and abroad



402-002. Yuri Platonov.  
A LITTLE YARD  
1975, oil on canvas, 44 × 69 cm



402-008. Yuri Platonov.  
VILLAGE  
1973, oil on cardboard, 49 × 68 cm



402-010. Yuri Platonov.  
IN THE VILLAGE  
1973, oil on cardboard, 49 × 67.5 cm

## SOLOMON BOIM (1899-1978), MOSCOW

Studied at Higher Art-Technical Institute (VHUTEMAS - VHUTEIN, Moscow), The Kharkov Art College.

Works are represented The State Tretyakov Gallery (Moscow), The Deineka Regional Art Gallery (Kursk), The Pushkin State Museum of Fine Arts (Moscow)



320-003. Solomon Boim.  
VILLAGE LIFE  
1950, gouache on paper, 54 × 75 cm



320-009. Solomon Boim.  
WORKERS  
1974, gouache on paper, 59 × 46 cm



320-011. Solomon Boim.  
A BIG CLEANING TASK  
1954, gouache on paper, 50 × 69 cm

# TAMARA REIN (1915-2000), MOSCOW

Studied at The Moscow Polygraph Institute.

Works are represented State Art Museum in Pskov, The State Russian Museum, The State Tretyakov Gallery



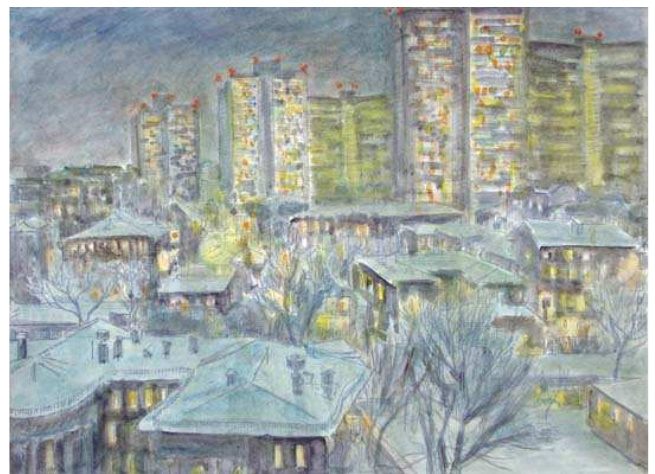
138-174. Tamara Rein.  
YOUNG TOURISTS  
1967, etching, 57 × 80 cm



138-241. Tamara Rein.  
MOSCOW. SKATING RINK IN A NEW DISTRICT  
1978, watercolor on paper, 47 × 62 cm



138-220. Tamara Rein.  
MOSCOW. VIEW FROM THE STUDIO.  
1992, mixed, 46 × 60 cm



138-221. Tamara Rein.  
MOSCOW. VIEW FROM THE STUDIO  
1985, mixed, 46 × 60 cm



138-235. Tamara Rein.  
MOSCOW. SOKOLNIKI IN WINTER  
1960, etching, 15 × 19 cm



138-181. Tamara Rein.  
MOSCOW METRO. "PUSHKINSKAYA" STATION.  
1981, mixed, 37 × 52 cm