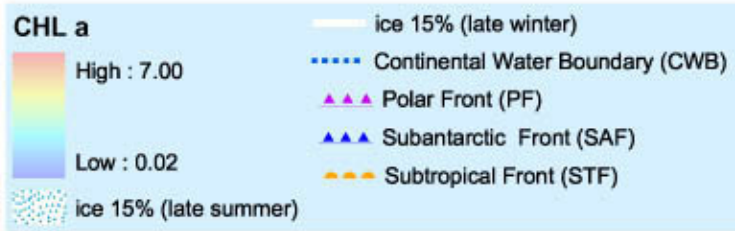
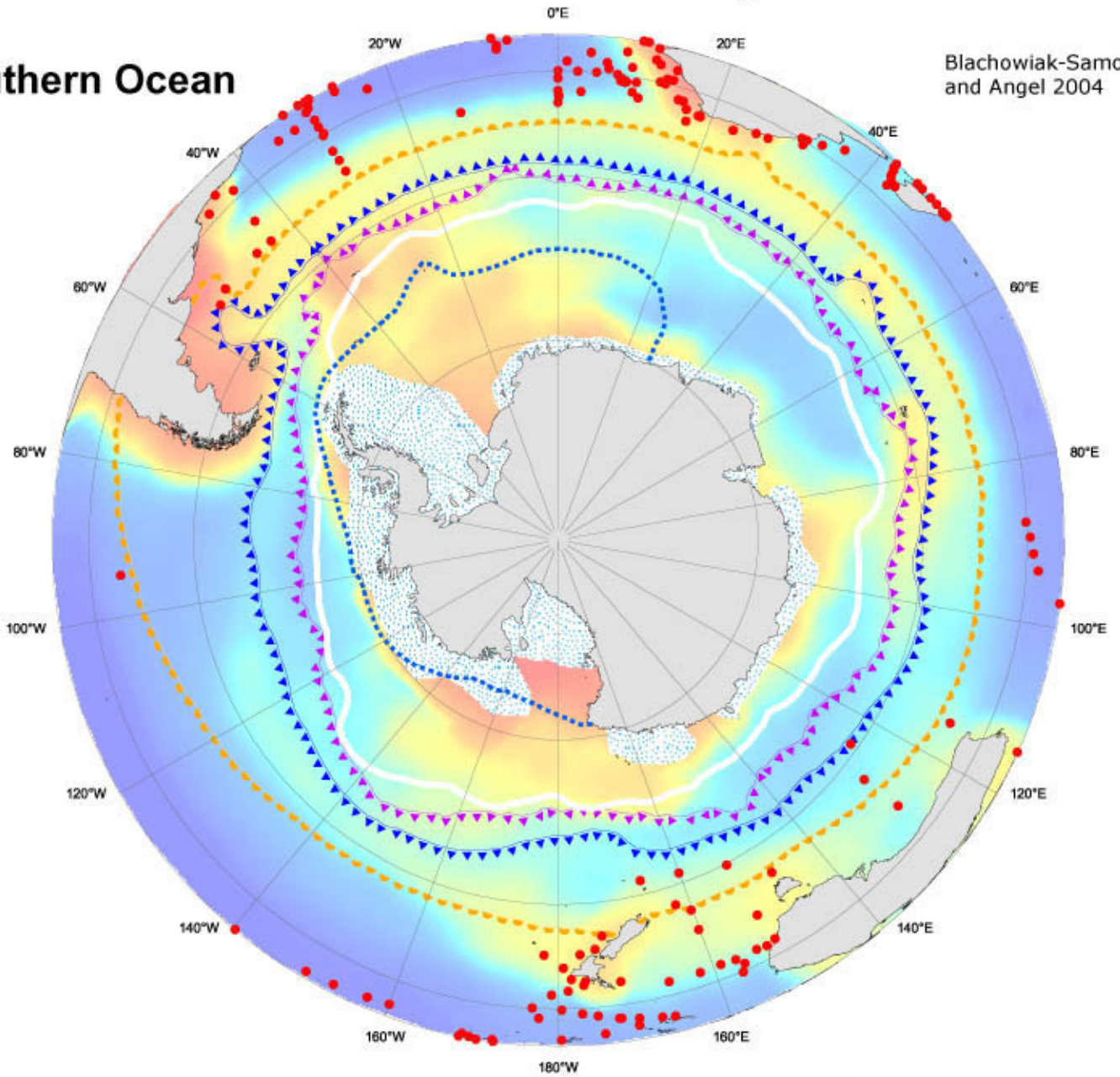


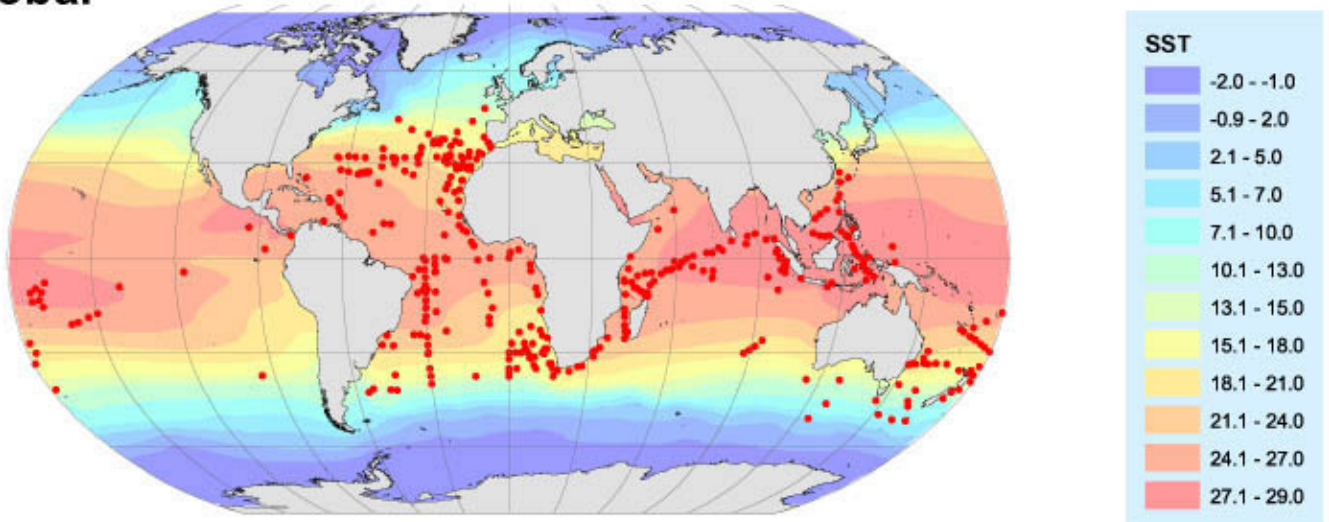
● *Orthoconchoecia bispinosa*

Southern Ocean

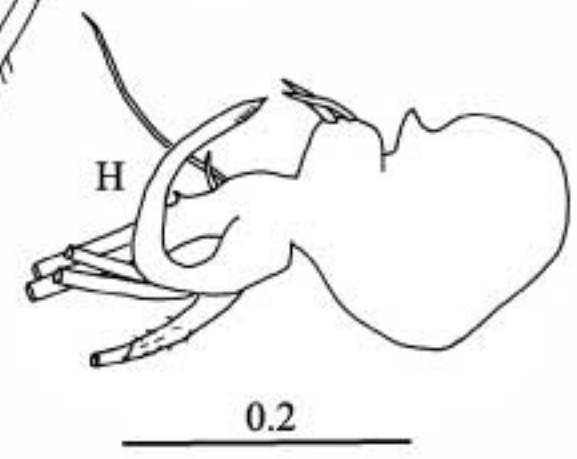
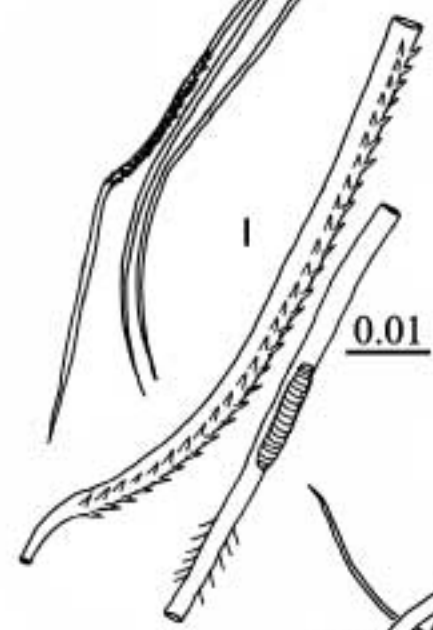
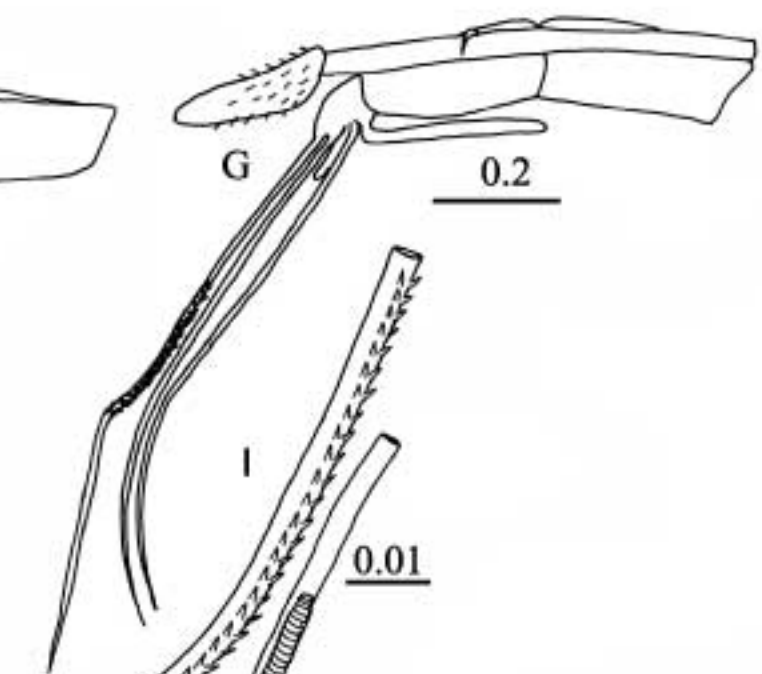
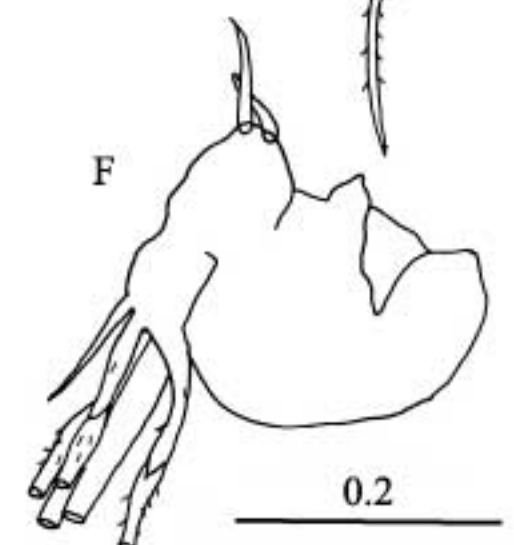
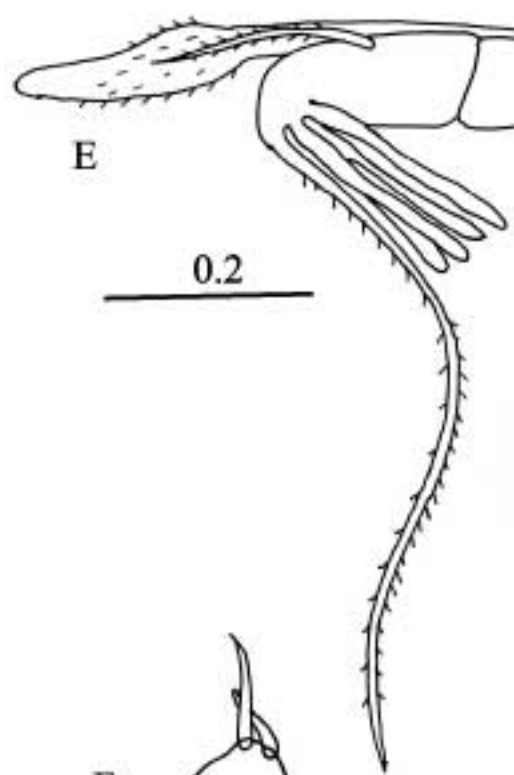
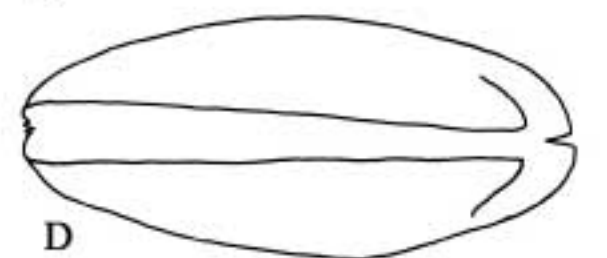
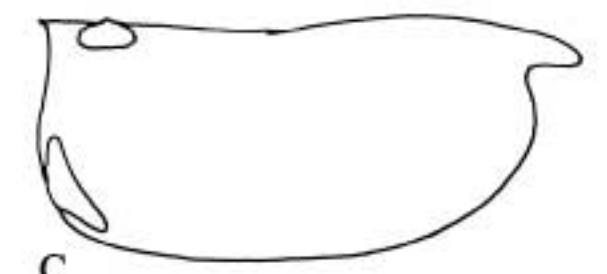
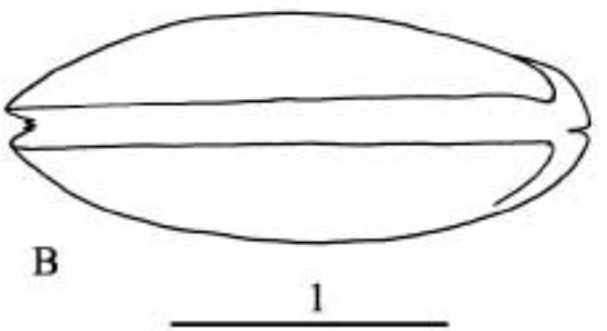
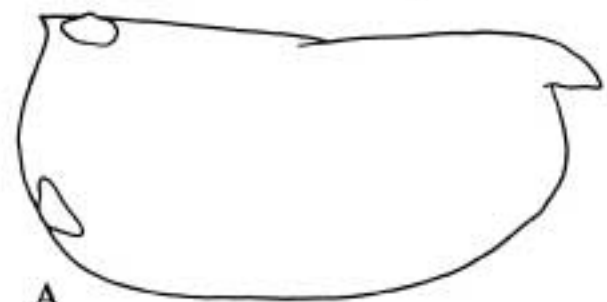
Blachowiak-Samolyk and Angel 2004



Global



*Orthoconchoecia bispinosa*



**Key to drawings**

Adult carapaces (A,B females, C,D males)

Details of the first antennae and frontal organs and the endopodite of the left second antennae of females (E and F) and males (G and H)

Details of the armature of the male first antenna setae (I).

*Orthoconchoecia bispinosa* Claus, 1890

Records: 418

This is a widespread and often abundant mesopelagic species recorded from all oceans. It is generally confined to latitudes  $<45^{\circ}$ , but has been reported from south of the Subtropical Front in the Australasian sector of the Southern Ocean.

<b>Equatorial Atlantic</b>	<b>n</b>	<b>Mean mm</b>	<b>s.d.</b>	<b>Range mm</b>
<b>Female</b>	40	1.85	0.070	1.68-2.00
<b>Male</b>	27	1.65	0.037	1.54-1.70
<b>A-1</b>	130	1.22	0.043	1.14-1.32
<b>A-2</b>	66	0.84	0.031	0.78-0.92
<b>A-3</b>	19	0.63	0.023	0.60-0.68