

ScanSnap

Color Image Scanner
S1500/S1500M



Getting Started

Thank you for purchasing ScanSnap S1500/S1500M (hereinafter referred to as "the ScanSnap"). This manual describes the preparation required for use of the ScanSnap. Follow the preparation procedures described in this manual.

For features and functions, basic operations, daily care and consumable replacement of the ScanSnap, refer to the Operator's Guide which is available on the Setup DVD-ROM. Keep this manual in a safe place so that you can refer to it at any time when using the ScanSnap.

Microsoft, Windows, Windows Vista, Excel, and PowerPoint are either registered trademarks or trademarks of Microsoft Corporation in the United States and/or other countries.

Apple, the Apple logo, Mac, Mac OS, iPhoto, and Rosetta are trademarks of Apple Inc.

ABBYY™ FineReader™ Engine ©2011 ABBYY. OCR by ABBYY

ABBYY and FineReader are trademarks of ABBYY.

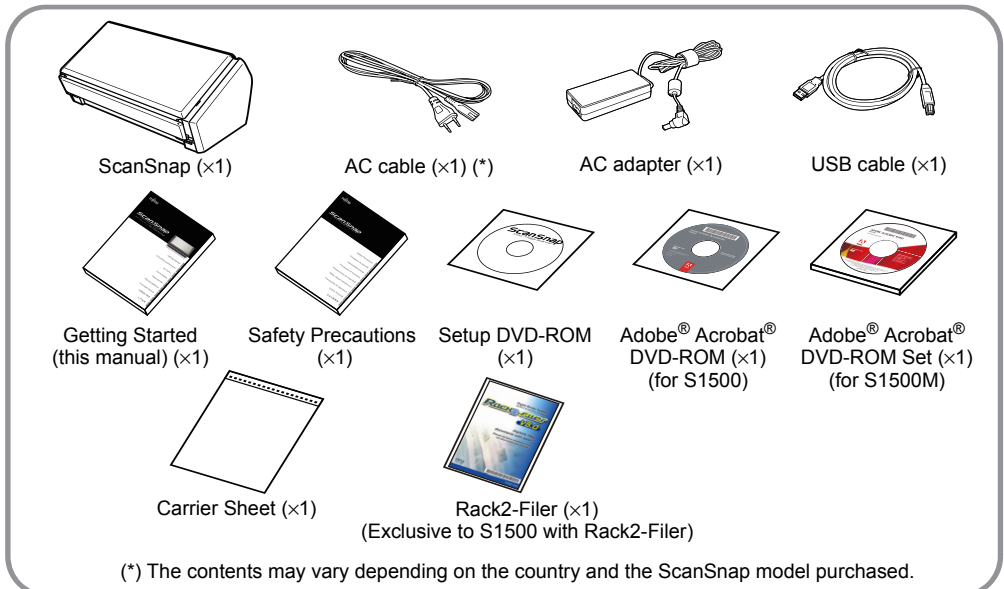
Other company names and product names are the registered trademarks or trademarks of the respective companies.

January 2012

© PFU LIMITED 2008-2012

Checking the Components

Make sure that all items shown below are included in the package.



If any other packaging is provided, make sure to store it as well. Make sure to handle the components with care. The box and packaging materials are required for storage and transportation of the ScanSnap. Do not throw them away.






If anything is missing or damaged, contact your FUJITSU scanner dealer or an authorized FUJITSU scanner service provider.

Read the Safety Precautions

Before using the ScanSnap, make sure to read and understand the information provided in the "Safety Precautions" document.

Symbols Used in This Manual

The following symbols are used in this manual.

Symbol	Description
	This indication alerts operators to an operation that, if not strictly observed, may result in safety hazards to personnel or damage to the product.
	This symbol alerts particularly important information. Be sure to read this information.
	This symbol alerts operators to helpful advice regarding operation.
	This symbol indicates operations using Windows®.
	This symbol indicates operations using Mac OS.

Referring to the "Operator's Guide"

To refer to the "Operator's Guide", insert the Setup DVD-ROM in to the DVD-ROM drive, and follow the procedure below.



Click the [Manuals] button in the [ScanSnap Setup] dialog box, and then the [Operator's Guide] button.

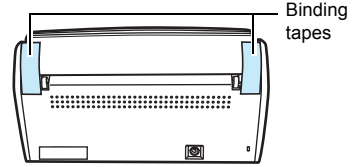


Double-click the [Operator's Guide] icon in the [ScanSnap] window.

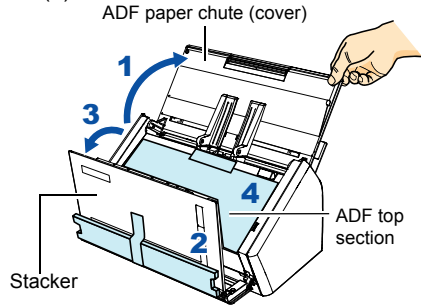
Removing the Protective Packaging

Follow the procedure described below to remove the protective packaging before using the ScanSnap.

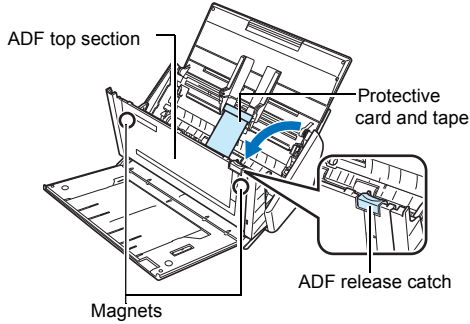
1. Remove the binding tapes from the back of the ScanSnap.



2. Open the ADF paper chute (cover) (1), and pull the tape to remove the protective foam sheet (2) from the stacker. Open the stacker (3) and pull the tape to remove the protective sheet from the ADF top section (4).



3. Pull the ADF release catch to open the ADF top section, and pull the tape to remove the protective card.



If a magnetic card or IC card comes into contact with the magnets on the ADF top section, the magnetic part of the card may be damaged.

Installing the Software

Windows® Installation → (page 3)

Mac OS Installation → (page 5)



Do not connect the ScanSnap to your computer before installing the software.



When you export the data scanned by ScanSnap to your mobile device, download ScanSnap Connect Application for mobile from an application store (such as the App Store).

Windows® Installation

■ Software

You can install the following software.

- ScanSnap Manager (Scanner driver)
- ScanSnap Organizer (File management application)
- CardMinder (Business card management application)
- ABBYY FineReader for ScanSnap™ (OCR application)

To use Evernote for Windows, SugarSync Manager for Windows, Scan to Microsoft SharePoint, or Adobe® Acrobat® X Standard, the required software should also be installed.

For details about each software and its installation procedures, refer to "Installing the Software" in the Operator's Guide.

■ System Requirements

Operating system	<ul style="list-style-type: none"> Windows® 7 (32-bit/64-bit) Windows Vista® (32-bit/64-bit) Windows® XP (32-bit) (*1) Windows® 2000 (*2)
CPU	Intel® Core™ 2 Duo 2.2 GHz or higher recommended (Minimum: Intel® Pentium® 4 1.8 GHz)
Memory	Windows® 7 (32-bit/64-bit) 32-bit: 1 GB or more 64-bit: 2 GB or more Windows Vista® (32-bit/64-bit) Windows® XP (32-bit) Windows® 2000 512 MB or more (1 GB or more recommended)
Display resolution	800 × 600 pixels or higher
Hard disk space (*3)	3350 MB or more of free hard disk space (3800 MB or more of free hard disk space is required for using with Rack2-File)
USB port (*4)	USB 2.0 / USB 1.1

*1: Service Pack 2 or later is required

*2: Service Pack 4 or later is required

*3: For Windows Vista®, if .NET Framework 3.5 SP1 is not installed, a maximum of 500 MB of additional free hard disk space is required for it.
 For Windows® XP, if .NET Framework 3.5 SP1 is not installed, a maximum of 530 MB of additional free hard disk space is required for it.
 For Windows® 2000, if .NET Framework 2.0 is not installed, a maximum of 310 MB of additional free hard disk space is required for it.

*4: When using USB 3.0 port, it works as USB 2.0.



- If the CPU or the memory do not meet the required specifications, or the type of USB port or USB hub is USB 1.1, the scanning speed will slow down.
- When the font size is large, some screens may not be displayed properly. In that case, use a smaller font size.
- The actual increase in used disk space after installation and the required disk space for installation may differ from each other depending on your Windows® system disk management.

■ Installation

- Turn on the computer and log on as a user with Administrator privileges.
- Insert the Setup DVD-ROM into the DVD-ROM drive.
⇒ The [ScanSnap Setup] dialog box appears.



If the [ScanSnap Setup] dialog box does not appear, double-click "ScanSnap.exe" in the DVD-ROM via Windows Explorer.

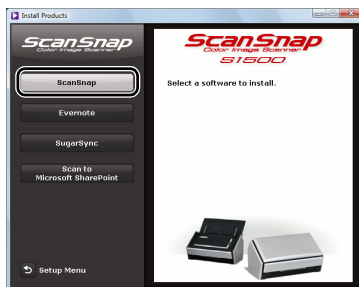
- Click the [Install Products] button.



⇒ The [Install Products] dialog box appears.

- Click the [ScanSnap] button.

Follow the instructions on the screen to continue with the installation.



If installation is not completed successfully, click the [Manuals] button in the [ScanSnap Setup] dialog box, and then the [Troubleshooting (installation)] button, and refer to Troubleshooting (installation).

Mac OS Installation

■ Software

You can install the following software.

- ScanSnap Manager (Scanner driver)
- ABBYY FineReader for ScanSnap™ (OCR application)
- Cardiris™ for ScanSnap (Business card text-recognized application)

To use Evernote for Mac, SugarSync Manager for Mac, or Adobe® Acrobat® 9 Pro, the required software should also be installed.

For details about each software and its installation procedures, refer to "Installing the Software" in the Operator's Guide.

■ System Requirements

Operating system (*1)	<ul style="list-style-type: none">• Mac OS X v10.7• Mac OS X v10.6• Mac OS X v10.5• Mac OS X v10.4
CPU	Intel® Core™ 2 Duo 2.4 GHz or higher recommended (Minimum: Intel® Core™ Duo 1.83 GHz, PowerPC® G5 1.6 GHz)
Memory	Mac OS X v10.7 2 GB or more Mac OS X v10.6 1 GB or more Mac OS X v10.5 Mac OS X v10.4 512 MB or more (1 GB or more recommended)
Display resolution	1024 × 768 pixels or higher
Hard disk space	3095 MB or more of free hard disk space
USB port (*2)	USB 2.0 / USB 1.1

*1: It is recommended to apply the latest updates to Mac OS.

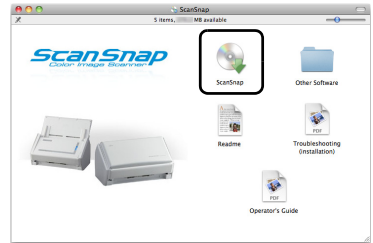
*2: When using USB 3.0 port, it works as USB 2.0.



If the CPU or the memory do not meet the required specifications, or the type of USB port or USB hub is USB 1.1, the scanning speed will slow down.

■ Installation

1. Turn on the computer and log in as a user with Administrator privileges.
2. Insert the Setup DVD-ROM into the DVD-ROM drive.
⇒ The [ScanSnap] window appears.
3. Double-click the [ScanSnap] icon.
Follow the instructions on the screen to continue with the installation.



Connecting the ScanSnap



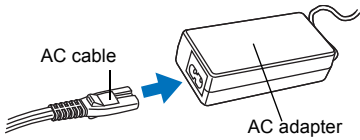
- Only one ScanSnap can be used by a computer at a time.
- Use only the cable supplied with the ScanSnap.



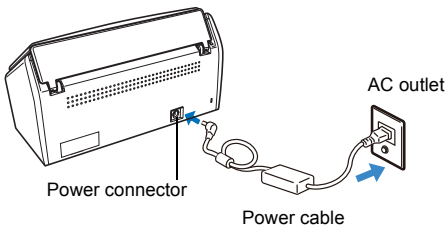
Do not use AC adapters other than the one supplied with this ScanSnap. Doing so may cause damage to the ScanSnap.

Manufacturer: SANKEN ELECTRIC Co.,LTD
Model number: SED80N2-24.0

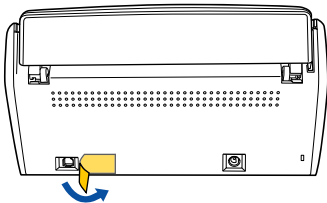
- 1.** Connect the AC cable to the AC adapter (collectively called the "power cable").



- 2.** Plug the power cable into the power connector at the back of the ScanSnap, and the other end to an AC outlet.



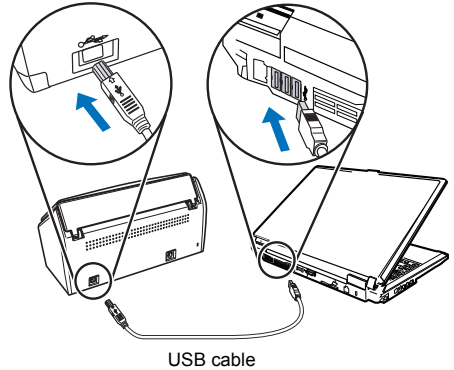
- 3.** Remove the tape seal on the USB connector of the ScanSnap.



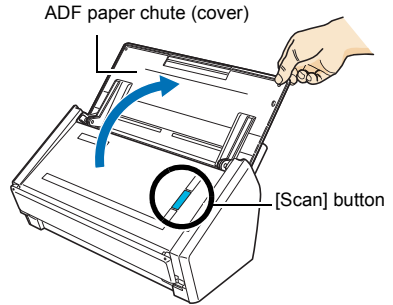
- 4.** Connect the USB cable to the USB connector on the ScanSnap and the USB port on your computer.



- When connecting to USB hub, make sure to connect the ScanSnap to the USB hub which is connected to a USB port of your computer. Use a powered USB hub (with AC adaptor).
- If USB port or USB hub is USB 1.1, scanning speed will slow down.
- Connect the USB cable with the USB mark facing up.



- 5.** Open the ADF paper chute (cover) of the ScanSnap.



⇒ The ScanSnap is powered on and the [Scan] button lights in blue.




- The bottom of the ScanSnap may become hot when the ScanSnap is used. This heat does not affect ScanSnap operation or cause any physical harm directly. Be careful not to drop the ScanSnap when hold the bottom for carrying the ScanSnap.

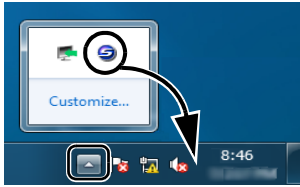
6. Check the ScanSnap Manager icon.

Windows

⇒ The ScanSnap Manager icon appears on the taskbar.



- ✓ In Windows® 7, the ScanSnap Manager icon is displayed in the menu which appears when you click  on the taskbar. To have the ScanSnap Manager icon always displayed on the taskbar, drag the icon and drop it onto the taskbar.



Mac OS

⇒ The ScanSnap Manager icon appears in the Dock.

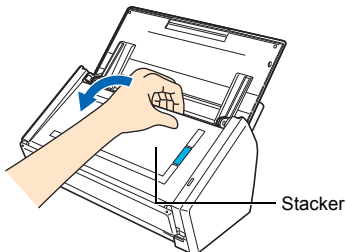


Scan Test

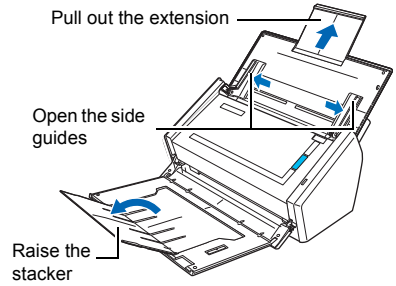
For details on documents that can be scanned with the ScanSnap and how to load documents, refer to "ScanSnap Overview" in the Operator's Guide.

1. Load the test documents into the ScanSnap.

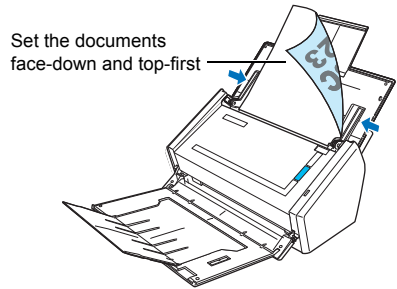
1. Pull the stacker on the ADF top section towards you.



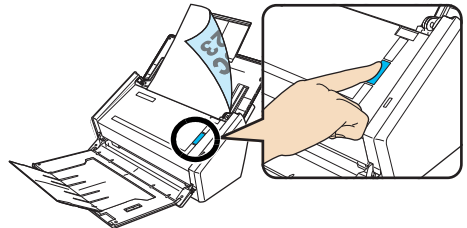
2. Prepare to load the document as follows.



3. Load the test documents on the ADF paper chute (cover), and adjust the side guides to the size of the documents.



2. Press the [Scan] button on the ScanSnap.



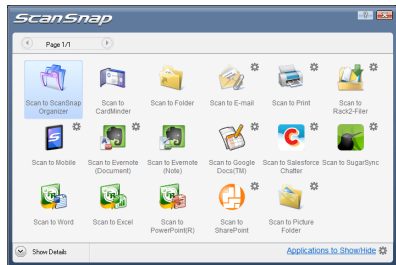
⇒ Scanning starts. The Quick Menu appears when scanning is completed.



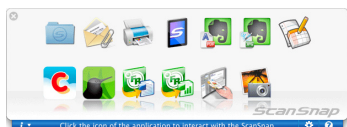
If scanning does not start, refer to "Troubleshooting" in the ScanSnap Manager Help.

3. In the Quick Menu, click the icon of the application to link with ScanSnap Manager.

Windows



Mac OS



⇒ The selected application is started.

Confirm that ScanSnap Manager is linked with the application that was selected from the Quick Menu.

- **Cardiris™ for ScanSnap**
For inquiries regarding Cardiris™ for ScanSnap, refer to the following Web page:
<http://www.irislink.com/support>
- **Evernote**
For inquiries regarding Evernote, refer to the following Web page:
<http://www.evernote.com/about/contact/support/>
- **Google Docs™**
For inquiries regarding Google Docs™, refer to the Docs Help or the Help forum by clicking on the Help link in Google Docs™.
- **Salesforce**
Contact your Salesforce system administrator.
- **SugarSync**
For inquiries regarding SugarSync, refer to the following Web page:
<https://sugarsync.custhelp.com/>
For other inquiries, refer to the FUJITSU Office contact list on the last page of the Safety Precautions manual.

Contact for Inquiries

- **Adobe® Acrobat®**
For inquiries regarding Adobe Acrobat, refer to the following Web page:
<http://www.adobe.com/support/>
- **ABBYY FineReader for ScanSnap™**
For inquiries regarding ABBYY FineReader for ScanSnap™, refer to the contact list by proceeding to the following.

Windows

From the [Start] menu, select the [All Programs] → [ABBYY FineReader for ScanSnap (TM) 4.1] → [User's Guide] → [Technical Support] → [ABBYY Offices].

Mac OS

From the Finder window, select the [Applications] → [ABBYY FineReader for ScanSnap] → [FineReader for ScanSnap Preferences] → [Help] → [FineReader for ScanSnap Help] → [ABBYY Offices].