



Uninterrupted DASD Migration...FDRPAS



## Getting the results you are looking for...

The demand for 24x7 availability has never been greater. System outages due to the implementation of new z/OS DASD hardware, or the mass movement of data from one DASD subsystem to another, can no longer be tolerated. Storage Managers need a DASD migration tool that can migrate whole disk volumes to new UCB addresses with no disruption.

**If you have not tried FDRPAS, now's the time...**

## FDRPAS...simplified automated migration

FDRPAS is a DASD migration facility that is fast, safe, and provides non-disruptive continuous availability. With FDRPAS you can move individual disk volumes or an entire DASD controller, to new hardware during normal system operations, without interrupting any system activity.

**OVER 1,400 MIGRATIONS SINCE 2001!**

## Find out what FDRPAS can do for you...

- ✓ User Experience:  
[www.fdr.com/fdrpas](http://www.fdr.com/fdrpas)
- ✓ Concept & Facilities Guides:  
[www.fdr.com/cfguides](http://www.fdr.com/cfguides)
- ✓ View the Product Demos:  
[www.fdr.com/demos](http://www.fdr.com/demos)
- ✓ E-mail INNOVATION Sales:  
[sales@fdrinnovation.com](mailto:sales@fdrinnovation.com)

**Call us at: (973) 890-7300**  
for a *FREE No-Obligation Trial!*

**TESTED and PROVEN**  
**Migrated to a HDS VSP DASD**  
**and moved non-disruptively**  
**22TB's of data in 6.5 hours.**



**CORPORATE HEADQUARTERS:** 275 Paterson Ave., Little Falls, NJ 07424 • (973) 890-7300 • Fax: (973) 890-7147

**E-mail:** [support@fdrinnovation.com](mailto:support@fdrinnovation.com) • [sales@fdrinnovation.com](mailto:sales@fdrinnovation.com) • <http://www.innovationdp.fdr.com>

**EUROPEAN  
OFFICES:**

**FRANCE**  
01-49-69-94-02

**GERMANY**  
089-489-0210

**NETHERLANDS**  
036-534-1660

**UNITED KINGDOM**  
0208-905-1266

**NORDIC COUNTRIES**  
+31-36-534-1660

# IBM Systems

September/October 2012 [ibmsystemsmag.com](http://ibmsystemsmag.com)

m a g a z i n e



Commerce Bank rolls with changes

PAGE 14

System z manages data mart chaos

PAGE 22

SPSS Modeler 15 makes sport of predictive analytics

PAGE 28

## Generation Hybrid

IBM launches zEC12, the second generation of zEnterprise

PAGE 18

# TAPE

Whether  
you  
Love it



or  
Hate it

## Trust the World-Wide Leader in

### Tape Data Migration Products & Services

- Hundreds of millions of tape datasets migrated in last 10 years
- Moves more tape dataset types than any other tape migration product: OAM, HSM, CA-DMS, and many others
- On-site or remote migration services

### z/OS Disaster Recovery Products

#### Automated Back-Up & Recovery:

- Full volume DASD audit capability
- Critical file identification
- VTL tape dataset duplication
- Copy export management for TS7740s

### Datacenter Workload Relocation Services

- Storage vendor independent
- Non-obtrusive data collection
- Non-destructive workload testing
- Fall back recovery capabilities
- Used by all major outsourcers

**CopyExport Manager • VDR • DR/Xpert • DBS • Tape/Copy**



Contact Us for More Information

**1-800-460-3011 or +1-469-635-1500**

**[www.opentechsystems.com](http://www.opentechsystems.com), [info@opentechsystems.com](mailto:info@opentechsystems.com)**

All products mentioned are trademarks or registered trademarks of their respective owners.  
© 2012 OpenTech Systems Inc. All rights reserved.



# AUTOMATED WORKLOAD MANAGEMENT FOR z/OS BATCH

LET AUTOMATION MODERNIZE  
YOUR BATCH SERVICE WITH

## ThruPut Manager<sup>®</sup> AE

### THE LEADER IN END-TO-END BATCH AUTOMATION

**ThruPut Manager AE** is a radical leap forward in datacenter automation technology. It simplifies the datacenter environment and enhances batch service to users, while delivering year-on-year datacenter savings.

### SIMPLIFY THE DATACENTER ENVIRONMENT

**ThruPut Manager AE** automatically balances workload arrival and importance with CPU and resource availability. Policy-driven automation

allows Technical Support to easily implement service objectives and eliminates the need for Operations to micromanage your batch workload.

### ENHANCE BATCH THROUGHPUT AND SERVICE

**ThruPut Manager AE** works with your job scheduler to manage your batch more effectively and complete your batch window earlier. When the system is under stress, **ThruPut Manager AE** escalates the most important workload, deferring the less important if necessary. User satisfaction is improved and there are fewer calls to the datacenter.

### DELIVER YEAR-ON-YEAR SAVINGS

Since **ThruPut Manager AE** delivers more work using less of the batch window, CPU upgrades can be deferred for year-on-year savings. In addition, its automated capacity management features can smooth processing peaks to reduce software licensing costs, for a superior return on investment.



SIMPLICITY • SERVICE • SAVINGS

**MVS**  
solutions inc.

8300 Woodbine Avenue, 4th Floor  
Markham, ON Canada L3R 9Y7  
Tel: (905) 940-9404 Fax: (905) 940-5308  
marketing@mvssol.com  
www.mvssol.com



18



## CASE STUDY

### Bringing Order to Disorder ➔ 14

Commerce Bank employs an enterprisewide solution to track application changes

By Jim Utsler



## COVER STORY

### The Next Evolution in Hybrid Computing ➔ 18

IBM launches the second generation of zEnterprise—zEC12

By Ellen Carbares  
Cover photo courtesy of IBM

## FEATURES

### Conquering Chaos ➔ 22

System z technology helps manage data mart complexities for business analytics

By Alan Meyer

### Split-Second Decisions ➔ 28

SPSS Modeler 15 offers real-time scoring for faster, more effective insights

By Rebecca Wormleighton



## DEPARTMENTS

### Editor's Desk ➔ 6

Keep Your Eye on the Ball

### IBM Perspective ➔ 7

Transforming Data Into Value

### Focus on Storage ➔ 8

Smarter Solutions Are Designed to Meet Increasing Demands for Information

### Tech Corner ➔ 32

The What and Why of zEnterprise Millicode

### Administrator ➔ 35

New DFSMS Features Increase the Availability of Data on System z

### Solutions ➔ 39

CICS JS/Server V1.1 • DR/VFI • JCL-QA

### Advertisers Index ➔ 39

### Stop Run ➔ 40

A 1440 Data Processing System Finds New Life After 50 Years





# ***Dynamic STEPLIBs*** ***and*** ***dynamic ISPF***

- Specify task and STEPLIB concatenations dynamically within ISPF
- Eliminate multiple LOGON procedures and repetitive LOGON / LOGOFF sequences
- Switch among multiple DB2 subsystems in a single ISPF session
- Reduce LOGON CPU and elapsed times by as much as 90%
- Run any ISPF application dynamically (without the need to pre-allocate dialog libraries)
- Remove all those datasets from your LOGON procs and eliminate merged libraries with hundreds or even thousands of members

***TASKLIB – don't run TSO/ISPF without it!***

***For a free trial call***

***rai*** ***Relational  
Architects  
International***

**800 776-0771 [www.relarc.com](http://www.relarc.com)**

ISPF is a registered trademark of IBM Corp.

To apply for or cancel your IBM Systems Magazine subscription, visit [www.ibmssystemsmag.com](http://www.ibmssystemsmag.com).

Mainframe edition

# IBM Systems magazine

We asked our contributors:  
What was your favorite subject in school?

## ADVERTISING/SALES

### ASSOCIATE PUBLISHER

Mari Adamson-Bray  
(612) 336-9241  
mbray@msptechmedia.com

### SENIOR ACCOUNT MANAGER, NORTHEAST, NORTHWEST & CANADA

Kathy Ingulsrud  
(612) 313-1785  
kingulsrud@msptechmedia.com

### JOE DORIA

Director, Global Marketing  
IBM System z

### WILLIE FAVERO

Senior Certified Consulting IT  
Software Specialist  
Data Warehouse for System z  
Swat Team

### JUAN GASTELU

Manager, Data Center  
Optimization Marketing  
IBM Systems and  
Technology Group

### SIMON HARES

System z Marketing Manager  
IBM Sales and Distribution

### JUERGEN HOLTZ

Design and Development, Tivoli  
System Automation Technologies

### KURT JOHNSON

System z Market Management  
and Marketing Strategy

The last one of the  
day or jazz ensemble

### ACCOUNT EXECUTIVE, MIDWEST & EUROPE

Darryl Rowell  
(612) 313-1781  
drowell@msptechmedia.com

### ACCOUNT EXECUTIVE, SOUTHEAST, SOUTHWEST & AUSTRALIA

Lisa Kilwein  
(623) 234-8014  
lkilwein@msptechmedia.com

### SALES AND MARKETING DEVELOPMENT MANAGER

Elizabeth Suttiff

## IBM EDITORIAL BOARD

### ERIC BAXLEY

Director, System z Software  
Marketing

### MARIANNE CARTER

Software Product Manager  
DB2 for z/OS Program Offerings

Algebra and  
creative writing

### PAULO CARVAO

Vice President,  
System z Global sales  
IBM Systems & Technology Group

Calculus

Math

### DORIS CONTI

System z Strategy Manager

### PAUL DIMARZIO

STG System z Brand,  
Enterprise Integration Strategy

Debate ... and I'll argue  
that with anyone!

### GREG LOTKO

Vice President and Business  
Line Executive, System z

### ALLEN MARIN

IBM System Storage Enterprise  
Disk Marketing

### MARY MOORE

STG Business Resilience  
Offerings

### DOUG PEARSON

Manager, System z Platform  
Marketing

### JIM PORELL

IBM Distinguished Engineer  
System z Business Development

### SCOTT SEARLE

Program Director,  
System z Marketing

### JACQUI (JAX) SHAWLEY

WorldWide Market Manager  
LMI Program Marketing –  
System z Software

### JACK YUAN

IMS TM and Connect  
Development  
Lead IBM Software Group/  
Database Management

## EDITORIAL

### EXECUTIVE PUBLISHER

Diane Rowell  
drowell@us.ibm.com

### PUBLISHER

Doug Rock  
drock@msptechmedia.com

### EXECUTIVE EDITOR

Evelyn Hoover  
ehoover@msptechmedia.com

History

### MANAGING EDITOR

Mike Westholder  
mwestholder@  
msptechmedia.com

### COPY EDITOR

Lisa Stefan  
LStefan@msptechmedia.com

Español, mis amigos

### SENIOR WRITER

Jim Utsher  
jutsler@msptechmedia.com

Biology

### TECHNICAL EDITORS

Ron Higgin  
rhiggin@laserboard.com  
Jim Schesvold  
jschesvold@mainframehelp.com

## PRODUCTION

### ART DIRECTOR

Jill Adler

### PRODUCTION MANAGER

Jonathan Benson

### PROJECT MANAGER

Elizabeth Reddall

### ASSOCIATE TECHNICAL PRODUCER

David Waters

## DIGITAL MEDIA

### VICE PRESIDENT DIGITAL MEDIA

Kevin Dunn

Anything that  
wasn't math

### WEB DEVELOPER

Jay Nelson

### WEB DEVELOPER/DATABASE MANAGER

David Waters

### E-MARKETING SPECIALIST

Brian Roberts

### VIDEOGRAPHER/ASSISTANT TECHNICAL PRODUCER

Kyong Ham

## CIRCULATION

### CIRCULATION DIRECTOR

Bea Jaeger

### CIRCULATION MANAGER

Linda Holm

That's easy! Math was  
always my favorite.  
I loved its lack of  
subjectivity.

### CIRCULATION COORDINATOR

Carin Russell

### FULFILLMENT COORDINATOR

Rebecca Bogema

© Copyright 2012 by International Business Machines (IBM) Corporation. This magazine could contain technical inaccuracies or typographical errors. Also, illustrations contained herein may show prototype equipment. Your system configuration may differ slightly. This magazine contains small programs that are furnished by IBM as simple examples to provide an illustration. These examples have not been thoroughly tested under all conditions. IBM, therefore, cannot guarantee or imply reliability, serviceability, or function of these programs. All programs contained herein are provided to you "AS IS." IMPLIED WARRANTIES OF MERCHANTABILITY, NON-INFRINGEMENT AND FITNESS FOR A PARTICULAR PURPOSE ARE EXPRESSLY DISCLAIMED.

All customer examples cited represent the results achieved by some customers who used IBM products. Actual environmental costs and performance characteristics will vary depending on individual customer configurations and conditions. Information concerning non-IBM products was obtained from the products' suppliers. Questions on their capabilities should be addressed with the suppliers.

The following (marked with an \*) are trademarks or registered trademarks of other companies: Intel, Itanium and Pentium are trademarks or registered trademarks of Intel Corporation or its subsidiaries in the United States and other countries. Java and all Java-based trademarks and logos are trademarks or registered trademarks of Oracle and/or its affiliates. Linear Tape-Open, LTO and Ultrium are trademarks of HP, IBM Corp. and Quantum in the U.S. and other countries. Linux is a registered trademark of Linus Torvalds in the United States, other countries, or both. Microsoft, Windows and Windows NT are trademarks of Microsoft Corporation in the United States, other countries, or both. UNIX is a registered trademark of The Open Group in the United States and other countries. Other product and service names might be trademarks of IBM or other companies.

All statements regarding IBM's future direction and intent are subject to change or withdrawal without notice and represent goals and objectives only. The articles in this magazine represent the views of the authors and are not necessarily those of IBM.

The following are trademarks (marked with an \*) of the International Business Machines Corporation in the United States and/or other countries. A complete list of IBM Trademarks is available online ([www.ibm.com/legal/copytrade.shtml](http://www.ibm.com/legal/copytrade.shtml)).

AIX	MVS	System Storage	VM/ESA
DB2	OS/390	System z	VSE/ESA
ESCON	POWER	System z9	WebSphere
FICON	S/390	System z10	System x
IBM	System i	Tivoli	z/OS
IBM logo	System p	TotalStorage	z/VM

Articles appearing in *IBM Systems Magazine, Mainframe edition* may have been published in previous *IBM Systems Magazine* editions.

Reprints: To order reprints, contact Kelly Carver (612) 336-9280.

*IBM Systems Magazine, Mainframe edition* (ISSN# 1544-8819) is published bimonthly by MSP TechMedia, 220 South Sixth St., Suite 500, Minneapolis, MN 55402. Publications Agreement No. 40063731, Canadian Return Address, Pitney Bowes, Station A, PO Box 54, Windsor, Ontario Canada N9A 6J5

Printed in the U.S.A.

## Service Out of This World



Our customers email us to say how much they love our products & appreciate the level of customer service we offer.

*"I've been using & recommending Jolly Giant products for over 10yrs because they are well designed, well executed and the customer support is exemplary. I use QWS3270 Secure daily. Can't say enough about how responsive this company is to its users."*

## Mainframe Connectivity Software

Established fast-loading, fast-operating TN3270E emulation tool

Worry Free Mainframe Security

Connects to an IBM mainframe using a secure, encrypted TCP/IP connection

Provides secure internal and remote access for your employees, business partners and customers

Amazingly fast, helpful and courteous customer support

Compatible with Windows® 7

Prices start at \$60.00 US/License

Visit our website and download your free trial copy today!

[www.jollygiant.com](http://www.jollygiant.com)



Toll Free: 1.877.776.4657

Email: [sales@jollygiant.com](mailto:sales@jollygiant.com)



*Reduce  
Hardware  
Software &  
H.R. Costs  
with...  
z/OSEM*

*This moment of tranquility  
brought to you by*

**TRIDENT**  
S E R V I C E S

Solutions for z/OS & Enterprise Servers since 1978

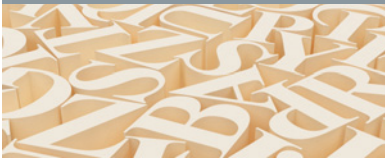
**Call now 1-800-887-4336**

[www.triserv.com](http://www.triserv.com)





CONTRIBUTORS



**Bob Rogers**

**A way with words**

A sought-after speaker and popular personality at SHARE conferences, IBM Distinguished Engineer Bob Rogers is rarely at a loss for words. This might be due, in part, to his interest in linguistics, despite no formal education on the topic. Today, Rogers describes himself as an amateur linguist, which he defines as “someone who loves to read about language, but is too lazy and undisciplined to actually learn any languages.” His mastery of English, however, is evident in this issue’s Tech Corner on page 32.

**James Bennett**

**A sense for humor**

James Bennett, illustrator for the “Split-Second Decisions” feature on page 28, has created humorous illustrations for multiple publications, including The New York Times, Sports Illustrated and Mad. The Pennsylvania resident also has illustrated books by comic legends Carl Reiner and Mel Brooks (“The 2000 Year Old Man Goes to School”) and Jerry Seinfeld (“Halloween”).



# Keep Your Eye on the Ball

Anyone who’s played—or even watched—baseball knows something about real-time analytics. In the half-second it takes for the ball to travel from the pitcher’s hand to home plate, a batter has a multitude of questions to answer.

For organizations, business analytics gives them that “batter’s eye” to see what’s coming and react; enabling them to glean insights by analyzing data approaching like a 99 mph fastball. By effectively reacting to—or even predicting—events like shifts in consumer demand, supply-chain issues or social media trends, they can gain an edge over competitors.

That keen vision is enhanced further with the zEnterprise\* EC12 (zEC12), the latest addition to the zEnterprise portfolio, announced recently by IBM. Get your first look at the zEC12 in our cover story on page 18. For more details, check out our online coverage at [ibmsystemsmag.com](http://ibmsystemsmag.com).

In addition, this issue focuses on how IBM System z\* technology can deliver a comprehensive, secure data analytics environment. It includes two features on the topic—one explaining how the mainframe can help conquer the chaos often brought on by data mart proliferation (page 22), and the other on how the new SPSS\* Modeler 15 enables split-second decisions through real-time scoring (page 28).

No discussion of analytics would be complete without mentioning big



PHOTOGRAPH BY TRAVIS ANDERSON

data. That’s covered as well. The IBM Smarter Storage for Smarter Computing release (page 8) helps clients embrace information growth, deliver information faster and manage storage with less complexity.

One company familiar with creating order from disorder is Commerce Bank (page 14). When its application-development processes became unmanageable, it turned to a change-management solution from ISPW.

For information on IBM business partner solutions, see the 2013 Mainframe Buyer’s Guide. Also included with this issue is the Women in Technology supplement featuring six key players in IBM’s larger ecosystem.

Clearly, data analytics requires the latest and greatest platform, tools, knowledge and approach. When all of those come together, organizations are assured of hitting one out of the park. 

Mike Westholder,  
Managing Editor

Contact Mike at [mwestholder@msptechmedia.com](mailto:mwestholder@msptechmedia.com)



# Transforming Data Into Value

**D**ata can be one of your most valuable resources. And when you add the right specialized hardware and software technologies, it can change the way you do business.

Analyzing billions of pieces of information for patterns can help with everything from managing traffic to launching new products. It's all about making smarter, faster, real-time decisions to gain an advantage or avoid risk.

IBM System z\* technology—with the newly announced zEnterprise\* EC12 (zEC12) platform—can play a business-critical role. Our next-generation enterprise system brings together

multiple architectures for real-time analytics, as well as hybrid computing for private clouds and simplified management.



We've found that if 50 percent or more of the data you access for a workload comes from the System z platform, it's most efficient to run it right there. Limiting how far the data moves before it's accessed reduces latency.

Likewise, System z technology features a comprehensive set of data warehousing and business analytics capabilities that help create new opportunities. Adding the IBM DB2\* Analytics Accelerator to the environment can provide significant competitive advantage, according to internal IBM tests. In these tests, clients' query times that previously ranged from 25 seconds to 90 minutes took only eight seconds or less. And with the new zEC12 server, these numbers are expected to further improve.

For data mining and text analytics, SPSS is available with Linux\* on System z. One of the unique attributes of SPSS\* Modeler 15—the latest version—is its in-database scoring for DB2 for z/OS\*. This real-time scoring of transactional data allows organizations to incorporate the newest and most relevant data as it's received directly into the decision-making process. The result is better, more profitable decisions.

Predictive analytics and scoring captures information about people's attitudes and opinions, and uses it to predict the outcomes of interactions before they occur. Organizations can proactively and repeatedly reduce costs and increase productivity to:

- Improve customer service through visibility into current inventory, ensuring the right stock is available when customers need it.
- Identify and manage transactions with a high probability of fraud.
- Increase marketing campaign success with higher response rates with fewer touches.

For integrated reporting, plans and scorecards, IBM Cognos\* is available for either Linux on System z or z/OS. And the recent delivery of ILOG CPLEX Optimizer for z/OS helps companies solve complex business optimization problems involving millions of constraints and variables. It takes facts—costs and yields, available resources and demand, goals and constraints—and finds the best possible plan or schedule of activities, thereby solving tough planning and scheduling problems.

The System z approach is an inclusive and integrated solution that builds upon real-time operational data spanning the enterprise as the foundation for a new level of insight that can be delivered within the lifespan of an existing business transaction. **Z**

Greg Lotko,  
Vice President and Business Line  
Executive for System z



## Redefining Storage

Smarter solutions are designed to meet increasing demands for information

By Caroline Vitse

Organizations require constant access to information, which leads to accelerating storage complexity and cost. Increasingly, storage budgets are exceeding server budgets, a trend that puts storage in the spotlight. To meet the rising demand for information, IBM introduced Smarter Storage for Smarter Computing in June.

The amount of information that must be stored—and the rate at which it is growing—is greater than ever. Companies are harnessing more information and revamping business models to embrace trends like social media, analytics and cloud computing to serve customers and gain a competitive edge.

### By the Numbers

An estimated 2.7 zettabytes of digital information will exist in 2012, up 48 percent from 2011, according to the 2011 Web conference “IDC Predictions 2012, Competing for 2020.” Projects

involving big data—data too huge and complex to be easily managed with traditional storage options—are expected to accelerate information growth, doubling or tripling the amount of information stored.

Storage infrastructures are struggling to keep up with this increasing volume. IT staffs are stressed to the limit because of inflexible architectures and increasing complexity. Outdated processes and technologies are difficult or impossible to adapt. Islands of information are formed as new applications are quickly deployed. Users



require faster storage provisioning and higher service levels. A hospital, for example, must store and be able to access thousands of medical records securely—possibly from a mobile device. This data must be accessed quickly, as each minute might be the difference between life and death.

Rapid growth and complexity have predictable results: Storage is a rising percentage of IT spending, and labor accounts for a growing percentage of such costs. “Rising costs and faster data growth are worrisome trends for operations managers,” says Mike Barton of IBM storage marketing. “Think of storage like electricity or another utility—you need it, but you don’t want to spend more than you have to.”

Data centers often don’t have the time and resources to take advantage of the full capacity of the storage they’ve bought. IBM Storage Infrastructure Optimization assessments confirm that the average data center uses less than 50 percent of its storage capacity. Utilizing the second half of a traditional storage system can be more complicated than using the first half, Barton explains.

Without a significant change in the way storage is approached, equipment and labor costs will consume an increasing percentage of the IT budget, reducing a company’s ability to innovate and compete. Without changes, a digital divide will be created between organizations that can embrace the explosion of information and ones that can’t.

### Better, Faster, Smarter

IBM Smarter Storage for Smarter Computing helps clients embrace data growth, deliver information faster and manage storage with less complexity (see “New Storage Products,” page 10). “IBM has learned how to transform storage environments, to give them the flexibility to better align with changing business requirements,” Barton says.

Smarter storage enables data centers to use more of their storage

capacity. According to the Forrester Total Economic Impact study of IBM Storwize\* V7000, Smarter Storage can reduce physical space requirements up to 50 percent using storage virtualization. Internal IBM

tests indicate smarter storage can reduce physical space requirements up to 80 percent using real-time compression. IBM Smarter Storage is self-tuning, delivering greater performance to the most-critical applications. It can manage

**IBM**Systems  
magazine

**WEBINAR**

## Get Ready for Big Data with IBM System z

### WHO SHOULD ATTEND:

IT and enterprise architects and managers; database administrators and managers; and system analysts.

### WHEN:

October 10, 2012, 8 PT/ 10 CT/11 ET



### AGENDA:

Big Data represents a significant opportunity for organizations to further lower the risks and costs of doing business. With the right technology to process and analyze Big Data, IT can step up to help businesses increase profit margins, discover new and differentiating ways to upsell, and cross-sell to their customer base.

Topics include:

- Consolidating differently structured sources of information to create better insight
- Augmenting business decisions with new perspectives on your customer base
- Integrating data stored on System z with Hadoop clusters and the Big Data platform
- Real-time decision-making at the point of contact with customers

We’ll also discuss real-world examples of organizations using System z and its information management portfolio for Big Data benefits.

### FEATURING:

**Mark Simmonds**  
Senior Product  
Marketing Manager,  
IBM Software Group

**Harry Batten**  
Systems z Data Servicing  
Strategy Manager,  
IBM Software Group



**REGISTER NOW**

<http://ibmsystemsmag.webex.com>  
click on “Event Center”

IBM and non-IBM storage as a single resource pool, helping reduce costs and complexity across the data center. This enables administrators to manage more capacity with less effort.

IBM Smarter Storage for Smarter Computing consists of three core attributes. To manage information growth and prepare for the future, storage must be: efficient by design to manage cost and capacity growth; self-optimizing to improve performance and productivity; and cloud agile to handle the new demands of applications and storage.

### 1 Efficient by Design

Storage systems are designed with built-in efficiency features; advanced features are pre-installed, ready to deploy and operate consistently.

An example is the patented Real-time Compression technology now built into Storwize V7000 midrange disk systems and SAN Volume Controller (SVC). Real-time Compression runs automatically, epitomizing the efficient-by-design idea. This IBM technology can support active primary data, which is a significant accomplishment. Other storage compression products work on secondary (or backup) data, limiting their practical use. Real-time Compression can reduce the cost per terabyte up to 40 percent compared to uncompressed storage, IBM estimates.

Another example is the IBM XIV\* storage system, which can enable smarter storage by allowing clients to cluster XIV systems for increased scalability and management through cross-system, non-disruptive data migration and enhanced multisystem management capabilities.

### 2 Self-Optimizing Storage

Self-optimizing storage can analyze data access patterns and automatically adapt, balancing performance and cost. It increases throughput for critical applications and supports new workloads

with high input-output operations per second (IOPS) requirements. IBM integrates self-optimizing capabilities into XIV and storage systems that support Easy Tier\* technology, such as DS8000\*, Storwize V7000 and SAN Volume Controller (see “DS8000 6.3 Highlights,” page 11).

“IBM self-optimizing storage understands your usage patterns and automatically tunes the system, so you get the perfect balance of cost and performance,” Barton says.

Rapidly growing analytics workloads and other low-latency applications are overflowing server-based storage, notes

## NEW STORAGE PRODUCTS

The following IBM products were announced June 4:

### Storwize\* V7000

- Integrated Real-time Compression for active data
- Four-way clustering
- Fibre Channel over Ethernet (FCoE) to simplify infrastructure through use of converged networks

### System Storage\* SAN Volume Controller V7

- Integrated real-time compression for active data
- FCoE to simplify infrastructure through use of converged networks

### Tivoli\* Storage Productivity Center V5.1

- Intuitive, easy to use GUI based on XIV\*/V7000
- Custom analytical and reporting capabilities
- Automated storage tiering optimization for performance and cost advantage
- Cloud support for storage

### System Storage DS3500 Express and System Storage DCS3700

- Enhanced FlashCopy\* saves time with high-speed backups
- Protect your data and improve recovery time with adaptive disk pooling
- Reduce storage expenses by saving capacity and increasing storage utilization with thin provisioning

- Increase storage management efficiency for VMware environments with VAAI support

### Scale Out Network Attach Storage (SONAS) R1.3.2

- TPC support, gateway support for XIV and Storwize V7000

### System Storage DS8000\*

- 400GB SSDs, full disk encryption (FDE) for SSD, nearline drives, Easy Tier\* includes FDE

### Real-Time Compression Appliance\* V3.9

- Capacity planner

### System Storage TS76xx ProtectTIER\* 7620, 7650 and 7650G

- File protocol support for backups, increased performance and capacity

### LTFS Storage Manager Software V1

- Lifecycle management for files using LTFS

### IBM Tape System Library Manager Software V1

- Consolidated view of multiple TS3500 tape libraries

—C.V.

# DS8000 6.3 HIGHLIGHTS

## With the Smarter Storage for Smarter Computing announcement in June, IBM enhanced the popular DS8000 storage solution

The DS8000\* 6.3 offers 400 GB of solid-state drive (SSD) storage—33 percent more capacity than the previous release. Also available is the 400 GB SSD with full disk encryption, which encrypts the data as it's being written and decrypts it as it's being read. The 3 TB near-line drive also has a self-encrypting version, which means each drive tier offers self-encrypting

technology. Offering traditional and encrypted SSDs now enables clients to deploy Easy Tier\* technology with a fully encrypted system.

Easy Tier technology migrates data to the appropriate storage tier and within that tier automatically balances the data on the single-tier system to help increase performance.

This smart-data placement intelligence leverages server

resources and can further optimize performance because frequently accessed data is placed in a separate drive tier. The DS8000 6.3 uses this high-density SSD cache to enhance performance.

Enterprise Strategy Group's report, "IBM's Smarter Storage Takes Shape," states that "Easy Tier support now includes support for fully encrypted DS8000 systems, combining the

benefits of data-at-rest security with the ability to effectively balance application performance and costs through intelligent data tiering and eliminating hot spots."

These enhancements to the DS8000 system allow users to enjoy the benefits of self-optimizing storage. They can improve the performance of their storage solutions, saving money in the process.

—C.V.

Barton. The Easy Tier function extends beyond traditional storage boundaries to leverage server-based flash. Applications can run faster and grow larger, while the function helps control complexity. It gives clients more cost/performance options for mission-critical applications.

### 3 Cloud Agile

Cloud computing has many benefits, but most importantly, it can improve business agility. Organizations are migrating applications and file systems to the cloud to increase service levels, improve flexibility and reduce IT costs.

"Storage virtualization increases agility, so it makes sense that virtualized storage is a core capability and requirement of cloud environments," Barton says. If your organization is hosting cloud applications, you need virtualized storage to support those applications with the service levels required. Having virtualization built into storage systems allows organizations to adapt to trends such as cloud computing while optimizing existing workloads.

"The ability to not only lower costs, but to also have multiple options at a lowered cost allows organizations

## MAINFRAME DATA ENCRYPTION

z/OS • UNIX • LINUX • WIN

- Encrypts Data at Rest and Data Exchanged via FTP or Tape
- Non-Proprietary Software Solution; Works Easily with Other OpenPGP Based Products
- API Callable Subroutines to Implement Encryption Directly into Applications, Databases, Exits, Online Transactions & Batch Programs
- Easy, Comprehensive Key Management
- OpenPGP, GnuPG, OpenSSL, X.509 Compatible
- Extensive Algorithm Support: DES, 3DES, CAST5, HMAC, SHA1, SHA2, ADL, AES128, AES256, CRC & Blowfish
- Free Seamless Encryption Software for Business Partners Using MegaCrypton's Partner-Connect for Windows, UNIX, Linux & z/OS
- Fast, Free Comprehensive Compression
- All-in-One Product, Supported by One Company, 24x7x365 Support

**FREE trial downloads at [www.aspg.com](http://www.aspg.com)  
(800)662-6090 • (239)649-1548**

**ASPG**  
ADVANCED SOFTWARE PRODUCTS GROUP, INC.  
[www.aspg.com](http://www.aspg.com)

**MEGA**  
**Crypton**



**“IBM has learned how to transform storage environments, to give them the flexibility to better align with changing business requirements.”**

—Mike Barton, IBM storage marketing

to offer a menu of meaningful cloud services,” he adds. “This allows users to choose their own balance of efficiency and advanced capabilities on a case-by-case basis. The ability to automate these policies allows organizations to implement self-service.”


Cloud-agile storage is designed to fully participate in highly virtualized environments. Smarter storage manages storage platforms as one virtual resource pool; data is automatically synchronized between facilities and files can be transferred to users wherever they are. IBM smarter storage is optimized for rapid deployment of private clouds and

provides essential infrastructure for public cloud providers.

The IBM Active Cloud Engine\* solution enables easy creation and enforcement of policies to handle the rapid growth of unstructured file systems. It can move files to the right tier and location for optimal accessibility while maintaining a single view for easier searching.

### Getting to Your Next Destination


IBM Smarter Storage for Smarter Computing helps enable new cloud, analytics and big data initiatives, adapting to changing workloads and trends.

“The future of storage is smarter storage, and we need Smarter Storage for Smarter Computing to build a smarter planet,” Barton explains. “In the future, the toughest storage challenges will be automated and integrated into storage systems. With smarter storage, you’ll be ready to embrace new initiatives that can increase the value of IT to your organization.” 






**Caroline Vitse** is a freelance writer based in Rochester, Minn.

# SHARE



Over the past five decades, SHARE has become synonymous with high-quality, user-driven education, peer networking and resources to make enterprise computing specialists more effective professionals. While independent, SHARE maintains a close partnership with IBM and its subsidiaries, as well as with leading solution providers to continually strengthen SHARE’s benefits for its members.

**A sample of what SHARE has to offer:**

-  **Monthly webcasts** on top-of-mind IT topics presented by leading IT solution providers
-  **Active blog discussions** on industry trends and announcements at [www.SHARE.org/PresidentsCorner](http://www.SHARE.org/PresidentsCorner)
-  **SHARE Content Library**, including past conference proceedings, technology studies and more!

**Sample technical sessions from 2012 SHARE events include:**

- Big Data: Turning Promise to Reality
- Head in the Clouds, Feet on the Ground: Modernizing Enterprise IT with Cloud Integration
- Data Resiliency – Glitches & Gotchas
- z/OS Debugging: Everything You Need to Know to Shoot an 0C4
- FISMA and z/OS: Best Practices
- User Experiences Installing Oracle and WebSphere on Linux on System z

**SHARE Research**  
SHARE regularly studies key industry trends. Recent studies include the *Social Media and Business Intelligence Research Findings* and *Closing the IT Skills Gap*. Visit [www.SHARE.org/research](http://www.SHARE.org/research) to view these studies.

**2013 Events**

**SHARE in San Francisco**  
February 3–8, 2013 | Hilton San Francisco Union Square  
Find out more about SHARE at [www.SHARE.org](http://www.SHARE.org)

**SHARE in Boston**  
August 11–16, 2013 | Hynes Convention Center





# UNICOM<sup>®</sup> Global

Putting IT All Together.<sup>SM</sup>

## UNICOM Completes Merger of GTSI Corp

Current government agencies are struggling to cut costs from their operations and are in need of modernizing their IT systems. With the merger of GTSI Corp., completed for \$76.7 million, <http://washingtontechnology.com/articles/2012/06/18/gtsi-unicom-merger-closer.aspx>, UNICOM now has the opportunity to provide inexpensive and effective hardware, software and services directly to the government on a large scale.

There are over a trillion dollars of legacy applications owned by the government and Fortune 500 companies. With mobility, cloud computing, modernization and data analytics as possible upcoming governmental challenges, UNICOM is poised to provide the tools needed for IBM zEnterprise, IBM i, UNIX, and enterprise and open systems environments. *—Corry Hong, Founder, President and CEO*



**Corry Hong** invites you to learn more about the UNICOM Global group of Companies. Our philosophy promotes maximum value from your software investment dollar. With UNICOM, you **Simply Get More!**



Solutions for application performance, availability and document management. Easy to use and making the complex simple!



Solutions for CICS, session, security management, virtual tap and CICS macro level migration.



Delivers mainframe solutions through rich web-based interfaces. Bridging the gap between mainframe and other platforms.



Single source for IT procurement solutions - hardware, software, storage, connectivity, outsourcing, timeshare and more.



Help desk, asset, resource and knowledge management combined with robust reporting tools.



Specializing in application development, system monitoring/management, automated operations and centralized system access and control for the IBM i.

**For more information visit**

<http://www.unicomsi.com/group.html> or contact **Russ Guzzo** at +1.818.838.0606



# IT QUALITY ASSURANCE

➔ “I would think every organization needs a way to manage its infrastructure in order to maximize application availability. Otherwise, your technicians may be managing more problems than new features and functionality.”

—Craig Danielson,  
IT quality assurance manager,  
Commerce Bank

# TOP HONORS

## Commerce Bank employs an enterprisewide solution to track application changes

By Jim Utsler • Photography by Austin Walsh Studio

Change is inevitable—especially in IT departments, where new applications, lines of code and pieces of hardware are put into place every day. Overall, it's good; it indicates that organizations are amping up the services they offer.

However, keeping up with change can be daunting and seemingly endless. Spreadsheets are, in many cases, used as change-management tools, with developers updating them with their latest application alterations, for example. But this is a poor substitute for truly understanding what's changed and the potential effects of those changes.

Given the increasing regulatory- and auditing-compliance requirements, this isn't a trivial issue. In the banking industry, outside agencies are putting everything under a microscope—from the boardroom to the data center. That, in part, drove Commerce Bank to deploy ISPW's change-management system. It realized that while change is good, having a better handle on it is just as important.

### Community First

Headquartered in Kansas City, Mo., Commerce Bank was established in 1865. It has a presence in five states—Missouri, Kansas, Illinois, Oklahoma and

Colorado—with more than 200 branch locations and 400 ATMs. Among the 50 largest banks in the U.S., it offers banking services to commercial and private customers, such as savings and checking accounts, traditional mortgages, and debit and credit cards.

The bank's many honors are a testament to its community-first philosophy (see "Top Honors," below). "That's why our branch locations are so essential," says Craig Danielson, Commerce Bank's IT quality assurance manager. "People still like to be able to walk into a bank and talk with someone, and when they call and ask for a bank employee, they know they're going to be connected with a knowledgeable representative. Commerce's customer

promise is: We ask, listen and solve. It's that kind of experience—the small things—that makes our customers feel special."

Behind the scenes, the company strives to offer add-on services that further enhance its reputation, such as sophisticated online banking. Supporting those initiatives is an IBM System z10\* Business Class mainframe, which hosts a litany of applications. The organization also has an off-site mainframe for disaster recovery. Several IBM Power Systems\* servers complement its mainframe processing, as well as an extensive Microsoft\* Windows\* environment.

Although Commerce Bank is relatively small compared to the large



### TOP HONORS

Since its inception nearly 150 years ago, Commerce Bank has received many notable accolades, including:



It's been ranked among the **TOP 10** on Forbes' list of America's Best Banks for three years in a row.



Its holding company, Bancshares Inc., was named one of the **BEST** performing stocks of 2012 by Money magazine.



It was named the seventh-best bank of the **TOP 150** publicly traded U.S. banks in 2011 by Bank Director.



Wall Street banks, it makes an effort to keep up with the latest industry technologies. Danielson calls the company a fast follower. “We don’t adopt new technologies as soon as they’re introduced. We prefer other companies do the beta testing for us and then deploy when we feel the time is right,” he explains.

With that philosophy in mind, the developers are always hard at work writing new code or enhancing existing code. Systems administrators also roll out new hardware, as needed, often in support of the bank’s varied lines of business.

### Morning Reviews

Tracking all of its back-end changes can be a challenge, Danielson admits. “Since 2005, we’ve processed more than 47,000 changes in our production environment, but it wasn’t too many years ago that we were looking at implementing maybe only five, six, seven changes a day. Now it’s more like 500 to 600 a month. This might not seem like a lot to larger companies, but it is to us, which is why it’s important that we have a process by which we can keep track of everything. We don’t want to be disrupting our production systems and therefore our customers,” he says.

The bank has diversified its IT infrastructure in the past 10 years, expanding to non-mainframe platforms and adding many open-system applications. While this is good for overall operations, it has created a disconnect between various IT departments, each of which has experts related to those disparate systems and software.

The issue becomes particularly acute when considering the various changes that must happen on the back end, including alterations to databases, core operational applications, customer-facing software and even desktop OSs. Not to mention the hardware that may be introduced to the data center, such as

#### CUSTOMER:

Commerce Bank

#### HEADQUARTERS:

Kansas City, Mo.

#### BUSINESS:

Banking

#### CHALLENGE:

Tracking application code and hardware changes

#### SOLUTION:

Used ISPW to create a traceable and visual change-management environment to improve customer service

#### HARDWARE:

An IBM System z10 Business Class server

#### SOFTWARE:

A variety of packaged banking applications and the ISPW change-management solution



Craig Danielson

additional server racks, new cabling and upgrades to cooling systems.

To get a better handle on its disparate systems, Commerce Bank established a rigorous change-management regimen that includes tracking software and a people-based change-management escalation model. For example, every morning all of the company’s IT department managers review changes that were created the previous day.

This information is based on change requests submitted by developers and technicians, which are reviewed first by application managers and then department managers. If the change

requests make it through those first two rounds of approvals, any related issues will be discussed during that morning meeting. “By that point, the change requests have largely been blessed, so it’s then a matter of bundling them to see how they might impact each other. We’ll further assess and approve some of them, question some and put others on hold,” Danielson explains.

The goal is to enable change while managing inherent risk, so changes don’t get lost or, depending on their relevance, delayed for too long. This is also part of Commerce Bank’s fast-following ethos, with the company wanting to promote agile project management. This agility, Danielson says, helps it push out critical services to remain competitive.

“What we’re trying to do with our change management is be responsive to the business in a controlled fashion. And with our processes, change system and reports, we’re creating accountability and visibility for change,” Danielson says. “This results in an environment where everyone—no matter which

IT department/function they’re in—can see what’s going on, which in turn, establishes a climate in which we’re able to deliver new products and services in a timely manner.”

### Limited Impact

Although it had a change-management package in place prior to deploying the ISPW solution, Commerce Bank decided to investigate other options. Ultimately, the decision to go with ISPW was a fairly simple one. Its all-in-one solution ran on what the company considers the highly reliable framework of the mainframe and is not a piecemeal solution cobbled together out of many different change-



management systems running on different platforms.

“If we had gone that route, which we had briefly considered, we would have had to learn all of the ins and outs of each of these systems, which would have increased the complexity required for supporting, training and using the systems.” Danielson recalls. “And on top of that, we’d also have to deal with multiple vendors should something go wrong. We just didn’t feel that was the right way to go with this.”

This was especially true given the critical nature of change management within the IT environment. So in 2007, Commerce Bank purchased ISPW software and pushed it into production after testing it and working with ISPW to ensure the system worked as desired.

Now, the bank has a single change-management solution running on the System z\* platform that, in conjunction with its change-management systems, policies and processes, serves all of its needs. For example, when a developer is making a change to one of Commerce Bank’s applications—and after it’s been approved by the department heads during their morning meeting—ISPW can release the code to production based on a date and time entered by the developer. As more alterations are made, ISPW recognizes those changes, indicates they represent the latest version of the code and includes any additional pertinent information, such as who made the most recent changes.

In some cases, a script pushes the code to the appropriate production server, deploys it and then validates that the code changes were properly placed and the system is functioning as it should. Change implementations take

place within an agreed-upon service-level agreement (SLA) window to minimize user impact. An SLA might stipulate, for instance, that changes must occur after 5 p.m. when no internal users are on the system, or in the case of customer-facing applications that run 24-7, when there’s likely to be limited impact.

Most of this is managed with ISPW. Authorized users can upload and modify the code and then determine the date and time the code should go into production. ISPW then automatically releases that code on the specified date and time into the production environment, after which the validation process takes place. In all cases, testing and validation of code changes occur prior to deployment.

Commerce Bank uses various internal systems, processes and tools for tracking all changes, and it manages them by keeping the business and its customers at the forefront of its decision-making processes. Over the Fourth of July, for example, the company didn’t deploy any changes that would have affected its ATM systems. “We want people to have access to their money even if our branch locations are closed, so we’re very aware of those dates and conscientious when it comes to our customers’ needs,” Danielson adds.

This also applies to hardware deployments. Because access to the company’s data center is highly restricted, the change process is used to track who was in that area and for what reason. If someone is laying cabling, that person must be authorized to do so at a specified date and time.


In addition to managing change and release dates, as well as data center access, ISPW also acts as an auditing mechanism, tracking every time code is checked out

or new versions are created. This allows auditors to quickly and precisely determine which changes have been made to which systems, when and by whom. It also helps ensure the bank complies with applicable regulations, especially those pertaining to back-end systems.

### Beyond Banking

Change is inevitable, but it’s also manageable. For organizations like Commerce Bank, this is a boon. Instead of hoping that code changes are properly vetted before being put into production, ISPW ensures they have been—and then properly validates them afterward.

Although the banking industry is under additional pressure to track changes and retain an audit trail of everything that happens in its data center, Danielson notes that every organization deals with finances in some way. That’s why he encourages all of them to look into change-management solutions such as ISPW.

“Audits are common everywhere, so it’s incumbent upon every company to keep track of what’s happening where and who’s involved in what. It’s not just in the banking industry. And not only that, but I would think every organization needs a way to manage its infrastructure in order to maximize application availability,” Danielson says. “Otherwise, your technicians may be managing more problems than new features and functionality.” 



**Jim Utsler**, *IBM Systems Magazine* senior writer, has been covering technology for nearly 20 years.

“What we’re trying to do with our change management is be **RESPONSIVE** to the business in a controlled fashion.” —Craig Danielson



# The Next Evolution in Hybrid Computing

IBM launches the second generation  
of zEnterprise—zEC12

By Ellen Carbarnes

IBM has introduced its newest mainframe—the IBM zEnterprise\* EC12 (zEC12)—engineered to help enterprises respond to the rising processing and information needs of a smarter planet.

By utilizing IT, organizations can address data and transaction growth and offer additional capabilities to customers and new markets. To help IBM clients achieve these objectives, the new zEC12 is powered by 120 processors running at 5.5 GHz. And it scales up to 50 percent more capacity—or 78,000-plus MIPS—all in the same footprint and energy envelope as prior generations.

The IBM mainframe is a leading platform for transaction processing, consolidated and secure data serving, and support for enterprisewide applications. The zEC12 continues that tradition with new technologies such as IBM zAware and Flash Express that can provide greater manageability and improved availability.

Also, it supports secure data serving with data protection whether at rest or in-flight. Designed for EAL5+ certification, the zEC12 partition support can provide peace of mind that confidential data is secure—even when it's contained in disparate applications.

The zEC12 is the first general-purpose server to incorporate transactional memory technology, which was used at the Lawrence Livermore National Lab to help make the IBM Blue Gene\*/Q supercomputer, Sequoia. IBM has adapted this technology to the mainframe, enabling software to better support concurrent operations that use a shared data set, such as a banking application handling multiple transfers on the same account at the same time.

With its design, zEnterprise technology plays an ever-increasing role across all industries to help deliver on key business initiatives:

## TAKEAWAY

- ➔ IBM zEnterprise EC12 is the fastest, most scalable and secure enterprise system to date, offering a 50 percent total performance improvement compared with its predecessor.
- ➔ The new zEnterprise System is the result of \$1 billion in R&D investment and collaborative client input.
- ➔ Cutting-edge technology, including analytics and cryptography, is built into the latest System z platform to make it more intelligent, resilient and secure.



## SOLUTIONS FOR ALL

- Improve customer service by delivering insight into each transaction
- Enable continuous availability for processing critical transactions by intelligently monitoring the environment, in real time, to find unusual system behavior
- Secure data with cross-industry cryptography capabilities

Hybrid computing was driven by a need to reduce IT costs. The zEnterprise ecosystem is a multiarchitecture, tightly integrated environment—managed under one umbrella—that offers great efficiencies through large-scale consolidation. The next-generation zEnterprise hybrid takes this to a new level.

The zEnterprise BladeCenter\* Extension (zBX) Model 003 supports up to 112 blades with a mix of Power Systems\* blades, BladeCenter HX5 blades or IBM WebSphere\* DataPower Integrated Appliance XI50 for zEnterprise. Single point-of-control management of the environment is provided by the zEnterprise Unified Resource Manager.

### Driving Innovation

Focused on delivering an integrated, secure and available infrastructure, the next-generation hybrid enterprise system supports innovation and competitiveness through:

➤ **Operational analytics.** Integrated with real-time data and consolidated corporate data, operational analytics deliver information and insight across the enterprise. Building intelligence into each business transaction expands its value, creating new transactions and improving customer service, such as data management, warehousing, etc.

Using zEnterprise technology and the IBM DB2\* Analytics Appliance (IDAA), queries can run up to 1,000 times faster than the previous analytics tool. The actionable insight, delivered with this type of speed and based on current data

Businesses and organizations can address their unique needs—for example, executing government initiatives, accelerating globalization to manage risk and responding to consumer demand—with a selection of 12 new IBM solutions. These offerings provide choice of approach and support enterprise information integration and access across one management platform.

System z\* industry-focused solutions package software from IBM or ISV partners and services or assets from IBM Global Business Services\*. These include the IBM Intelligent Operations Center for Smarter Cities\*, IBM Health Plan Integration Hub, and two IBM Smarter Analytics offerings: Anti-Fraud, Waste and Abuse Solutions for healthcare or insurance, and the IBM Genelco\* Insurance Administration Solution.

—E.C.

provides new business opportunities and intelligence into customer interactions.

For example, a U.S.-based hotel applies this intelligence to each of its 1,500 transactions per second to establish an optimal price point. Each reservation is based on occupancy levels at the requested hotel or nearby locations and can reflect client loyalty. Accordingly, the hotel can book inventory down to the last available room to maximize yield.

➤ **Trusted resilience.** With the explosion of data as well as regulatory requirements, enterprises must be assured users have access to data and applications and are protected from a security breach. Trusted resiliency means the zEC12 can deliver unmatched availability, reliability and security for core business processes and operations. To that end, zEC12 offers new availability features to help clients who value security, better performance and availability during diagnostics.

Using zEnterprise Unified Resource Manager brings mainframe governance to the multiplatform environment, with capabilities that help the installation make good use of its resources and maintain the highest possible throughput. It helps mitigate the risks and provide controls not previously available in a combined mainframe and distributed environment.

IBM zAware allows data center specialists to gain visibility into system behavior, helping improve availability through faster problem determination. It's an integrated, self-learning, analytics solution that can identify unusual system behavior in nearly real time. Intuitive drill-down techniques can pinpoint unusual message patterns to rapidly and accurately identify potential issues and speed time-to-service recovery.

Flash Express can automatically improve availability for key workloads at critical processing times by boosting paging performance, thus helping deliver superior availability during transition periods, such as start-of-day processing or during diagnostics collection. This is vital for organizations with customer-facing or service applications, including banks, the public sector, financial services companies and retailers.

Cryptographic hardware on the zEC12 can help protect data privacy and sensitive custom applications. The new Crypto Express4S is suited for applications requiring data encryption, cryptographic keys and digital signing. Earlier implementation of PKCS #11 (digital signing) was provided by z/OS\*. Now the cryptographic coprocessor can be configured to meet public sector and

European Union requirements where standardized crypto servers are needed, such as with smart passports, national ID cards and online legal proceedings.

A representative of online retailer Swiss Colony says, “Within zEnterprise exists numerous security components that help reduce our overall risk. For example, encryption on zEnterprise is critical to our company success to allow us to protect customer privacy data while it is stored on our mainframe and while it is exchanged with other parties for processing.”

➔ **Efficiency at scale.** Efficiency at scale enables consolidation and the flexible delivery of services through a private enterprise cloud. With its 50 percent total performance improvement, enterprises can use the zEC12 to consolidate workloads and free up resources for new services. It features a proven hybrid

computing design capable of managing multiple architectures with the simplicity of a single system.

“When consolidating Linux\* business support applications and Oracle databases operating at the EUROCONTROL Maastricht Upper Area Control Centre (MUAC) from distributed servers to the System z\* ensemble, MUAC reduced floor space by 80 percent, reduced energy consumption by as much as 58 percent per year, reduced the need for hardware maintenance effort by 43 percent and saw 50 percent savings in software, particularly for Oracle, all running on System z with Linux,” says Huub Meertens, head of the SUP Engineering Section of EUROCONTROL MUAC. “With the great savings achieved with the System z ensemble, MUAC saw a 43 percent ROI.”

### Impressive Investment

With System z, IBM shows a commitment to hybrid computing and to delivering new innovations to the market. The new technologies’ core capabilities can provide the intelligence and protection your businesses needs, and its efficient scaling can deliver the cost savings organizations require to focus on new services and drive growth.

With the zEC12—the result of an investment of more than \$1 billion in R&D—IBM continues to deliver the highest levels of value to enterprises across industries worldwide. **Z**



**Ellen Carbarnes** is a worldwide marketing manager for System z.

**FOR MAINFRAME VTL  
EFFICIENCY USE...**



Scan this code on your smart phone today to register for our webinar event; upload a reader at [getneoreader.com](http://getneoreader.com)

DTS Software, Inc. expands its integrated suite of z/OS storage management programs to provide new efficiencies in the migration and use of your virtual tape system.

## DLM CONTROL CENTER

DCC provides a wide range of components that allow installations to more effectively install, manage, use and migrate to the DLm system.

- Robust command and monitoring interface
- Advanced intelligent device selection
- Automated migration of tape libraries
- I/O load optimization

DTS Software – the leader in Storage Management, System Monitoring and Automation.

Contact us at [info@DTSsoftware.com](mailto:info@DTSsoftware.com) or 770-922-2444 to learn more about our software.

[www.DTSsoftware.com](http://www.DTSsoftware.com)







CONQUERING

CHAOS



# System z technology helps manage DATA MART complexities for business ANALYTICS

By Alan Meyer • Photography by Travis Anderson

**F**or decades, organizations have achieved notable benefits implementing data marts for business analytics. Quick and inexpensive to deploy, they're frequently used to take advantage of specific opportunities: One data mart might be created to understand aging receivables, another to better target customers for a marketing campaign. Used to conduct root-cause analysis, data marts can save companies money and generate new sources of revenue.

Therefore, the choice seems simple enough: Deploy a commodity server, a couple pieces of software, or maybe a database and a query tool and the returns could be millions of dollars. A potential downside exists, however. Despite their value, data marts can become an overwhelming challenge for most organizations and can rapidly proliferate into an unmanageable nightmare.

Avoid such pitfalls by combining the capabilities of data marts with IBM System z\* technology, and the result is an analytics environment that delivers even more. Through unparalleled virtualization capabilities, the mainframe can house myriad data marts, keeping business intelligence (BI) applications close to the accurate,

secure and low-latency data they need to provide instant and smarter insights. The System z platform provides all of the benefits of a data mart—and so much more—for data analytics.

## Unintended Complexity

Quick to deploy, usually within days or weeks, data marts are an attractive choice because they enable a small organization within an enterprise to control a key set of information for analysis and reporting. Because they're generally isolated, the workload can be separated and encapsulated from the production environment, the data warehouse and other data marts, so analysis is uninterrupted. However, proliferation can breed unintended problems:

## TAKEAWAY

- Data marts are useful tools in delivering business insights to organizations, but they must be deployed in a cost-effective way.
- What if you could gain the ease of deployment and ROI of data marts, but do so more efficiently and effectively?
- Combined with the hallmarks of System z—constant availability, unsurpassed security and virtualization—data marts become even more valuable as part of an organization's analytics environment.



➔ **Rapid multiplication.** Data marts seem to multiply like rabbits. Each request is brought forward individually; each with its own business analysis and unique requirements. So the answer is often to keep adding data marts.

➔ **A lack of architecture.** Because data marts are frequently a short-term, tactical solution, they aren't part of the corporate architecture. So each places requests to extract a particular piece of data from the production system and analyzes it for its own purpose, multiplying the costs of extraction and downloading. Likewise, data consistency becomes an issue, so the accuracy of analysis is called into question.

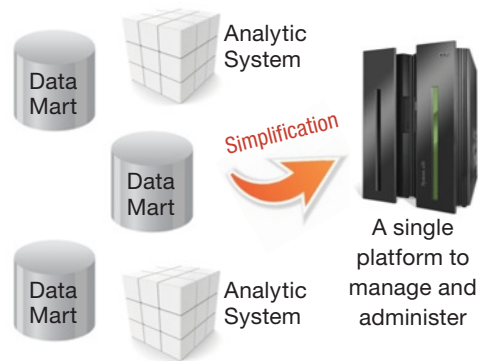
➔ **Administrative complexity.** As data marts multiply, keeping track of hundreds of servers becomes a nightmare. Each may require a data refresh from one to five operational sources per day. As software goes out of date, individual servers must have software refreshed. Common, periodic failures must be addressed and followed by hardware upgrades.

➔ **Spiraling costs.** All of these factors ultimately affect the bottom line, however, most corporations tend

**Figure 1** 

### Data Mart Consolidation Into a Single Footprint

Utilize virtualization to optimize the use of resources while reducing costs and gaining new agility



- ➔ Lower software costs
- ➔ Lower hardware costs
- ➔ Lower administration costs
- ➔ Lower environmental costs
- ➔ Greater flexibility
- ➔ Less complexity
- ➔ Fewer points for security intrusions

to ignore the costs associated with data marts until they review the aggregate costs across the organization (see “Infrastructure Complexity and Cost Are on the Rise,” page 26). Beyond the initial hardware and software expenses, they include numerous extraneous production data extractions, administration, environmental impacts and the security vulnerability.

#### Data Distribution Hub

Some organizations have addressed the issue of data consistency in data marts by implementing a data distribution hub, which acts as a clearinghouse for all data needed by the data marts. The sources are identified and the data is extracted at a predetermined time.

The data marts are then loaded with a single, consistent data set for

## THE POWER OF CONSOLIDATION

A leading European financial institution sought to continue impressive market growth through a singular understanding of its clientele for smarter marketing and risk assessment, etc. Without integrated information, however, it lacked a holistic view of its customers.

Before implementing an IBM Data Warehouse, the firm had tried multiple siloed data warehouses, resulting in data inconsistencies. Also, the organization faced challenges meeting emerging compliance requirements, such those from Basel II legislation, and needed to market more effectively to individual consumers. Company

leadership recognized a common, strategic platform was needed.

As a result, it chose to consolidate a data warehouse using IBM DB2\*, in part, because the bank already relied on a DB2 platform and used IBM software tools, such as WebSphere\*. As a result, it was able to continue to

employ IBM's development methodology without reinventing the wheel.

In terms of direct marketing, the returns have been impressive. For example, about 1 in 10 mailings to potential customers have resulted in a sale. That's the power of consolidation.

—Mike Westholder



Less complexity.  
Less setup.

**MORE INNOVATION.**

Mainframe  
Solutions

- Abend-AID
- File-AID
- Hiperstation
- Strobe
- Xpediter

Compuware  
APM

Covisint®

Changepoint®

Uniface®

Professional  
Services

Compuware Mainframe Solutions are intuitive, powerful and delivered through a modernized environment to help you minimize distractions while you develop, test, debug and tune your applications. So you can unleash your innovative potential.

This is the future of your mainframe.

Learn more at: [compuware.com/mainframe](http://compuware.com/mainframe)





## WHAT IS A DATA MART?

A collection of data brought together to analyze a given part of the business and drive profitable decisions, data marts have been around since decision systems were invented. Data can be reorganized and placed into structures that make the analysis much faster and simpler, such as a multidimensional cube. They provide:

- Departmental control
- Faster response times
- Isolation from the data warehouse
- Quick deployment
- ROI

analysis. This provides the insight into redundancies of data marts and opportunities to consolidate them. It also enables information from various data marts to be compared and contrasted with reliable, repeatable results.

Consolidating data marts and a data distribution hub onto a System z can provide all of the benefits of individual data marts, and remove most of the disadvantages (see Figure 1, page 24). Using virtualization, each data mart can still be isolated within a small community of users. In general, about 20 processors of data marts can be consolidated onto a

single System z processor. Because software is generally licensed by the processor, consolidating 20 data marts—each with roughly one processor—to a single, more powerful system translates to proportional cost savings.

Data mart consolidation can eliminate prolific commodity servers and their floor space requirements as well as decrease environmental costs such as electricity and cooling. It removes the need for network interface cards and the complex networking that ties users to each data mart server, potentially eliminating hundreds of points for security intrusions. In addition, when all data mart users are finished working for the day, the processing power can be reclaimed for other purposes.

### Simplified System z Environment

With the System z platform's virtualization capabilities, new data marts are easier and quicker to deploy, often taking hours instead of days or weeks. With a single administrative environment, each data mart can be monitored and administered simply and from one consistent interface.

When data is extracted from the OS, it can be quickly moved to a new

database instance via HiperSockets\* at memory speed to the data distribution hub. This reorganized data can then be moved again to the data mart for use without the expense of moving data off the system. For data that requires a higher degree of currency, change data capture software can synchronize a data mart directly with the production system or the data distribution hub, which then could synchronize with the downstream data marts. This provides near-real-time access to production data.

Because the data is within the highly secure System z environment, security concerns are minimized. Users can rely on the 99.999 percent availability, no longer hassling with the outages of commodity hardware. And because they're on a System z platform, the data marts can also participate in the industry standard for backup and recovery. Therefore, users can rest assured the data they're analyzing will be providing answers whenever needed.

Another advantage of System z for analytics is the capability to share a DB2\* Analytics Accelerator, which can handle queries up to 2,000 times faster. Users who must perform more complex

## Infrastructure complexity and cost are on the rise

- Growing number of physical servers and network gear
- Excessive energy usage and heating problems
- Inadequate power and cooling infrastructure
- Data silos and data synchronization
- Linear per-processor software costs
- Linear staffing costs
- Frequent outages

**On the Web** Read more on how the System z ecosystem helps organizations create a secure enterprise information hub for analytics: [ibmsystemsmag.com/mainframe/trends/security/information\\_hub](http://ibmsystemsmag.com/mainframe/trends/security/information_hub)

queries can see the results while they still remember the question.

Called train-of-thought analysis, queries that once took hours to run now take seconds. This gives organizations the ability to quickly analyze a situation and use fact-based information to drive decisions. Like most System z resources, a single Analytics Accelerator can be shared across multiple users, databases and virtualized systems, providing the best ROI.

### Under Control

When managed properly, data marts can be valuable resources. Common approaches to data mart consolidation on System z include:


- ➔ Merging data from multiple data marts to one
- ➔ Migrating the data mart onto DB2 from other data store technologies
- ➔ Moving the data mart and its technologies onto System z


Depending on the course selected, the target environment may vary between the following deployment options: DB2 for z/OS\* with a DB2 Analytics Accelerator; DB2 for z/OS; DB2 or another database on Linux\* on System z; or Linux, UNIX\*, or Windows\* on a zEnterprise\* BladeCenter\* Extension (zBX).

Each choice has its own advantages, and data marts can be moved from one technology to another, providing maximum flexibility and performance. These options help ensure an organization can consolidate quickly with the least amount of disruption.


### Panacea or Plague?

Are data marts a panacea or plague? The answer depends on how well they're managed. They can be a virus, growing out-of-control, consuming every resource the organization throws at them, or they can be

well-behaved, effectively managed resources that provide answers in a consistent, timely, cost-effective manner to deliver fact-based information. It all depends on how and where they're deployed. 



**Alan Meyer** is a marketing manager for data warehousing in IBM's Information Management System z organization.



www.visara.com

#### FEP-4600 Communications Controller 3745/3746 & CCL Replacement



- **No NCP/EP/SSP required**
- SNI/PU4 & Bisync
- ESCON/FICON connectivity

#### CNA-8000 Channel Network Appliance Communications Gateway



Functional replacement for Cisco CIP I&II, IBM 3172, 2216, & 3174 PU2 Gateways and many front-end processors.

#### 500-LXP Thin Client Console

Provides access to legacy Mainframe hosts, as well as the Internet, Intranet and Windows-based applications.

- Resident Linux OS
- Provides TN3270E, TN5250E, 3151 emulations with 122-key keyboard support.



#### iCon-XT Console Server



The iCon-XT provides a flexible and full featured console solution for System i, iSeries and AS/400.

- Local and remote management
- Internet & Intranet console sessions
- Console Session sharing

#### Vi-4990 Virtual Tape Appliance

The Vi-4990 is a disk based storage system that appears transparent to the Mainframe as standard 3420/3480/3490 tape drives.



#### CCA-3074 Console Concentrator Channel Attached Console Appliance



Functional replacement for Visara 22L & 25L SCON Controllers and IBM 3174 & 2074 console Controllers.

#### MCC Master Console Center



A single console control point from anywhere in the world for Mainframes, Midrange Systems, Client-server Systems, IP Networks.

#### Printers

Visara provides one-stop shopping for your printer and print supplies.

##### Serial Printers:

- Up to 9-part forms
- Parallel and Ethernet connectivity
- Compatible with a wide range OS systems



##### Matrix Printers:

- Up to 512K pages monthly
- Up to 18K lines per minute
- "Smart Ribbon" technology

Visara International 2700 Gateway Centre Blvd. Suite 600, Morrisville NC 27560  
Voice: 919.882.0200 email: info@visara.com





# **SPLIT-SECOND DECISIONS**

**SPSS Modeler 15  
offers real-time  
scoring for faster,  
more effective  
insights**

By Rebecca Wormleighton  
Illustration by James Bennett





**A** ccording to the 2011 IBM Global CMO Study, the No. 1 priority for chief marketing officers is to enhance customer loyalty. For CEOs, the top priority is to get closer to the customers. And for CTOs, improving analytical skills across the company will be the largest investment area over the next five years.

Predictive analytics is the key to gathering and analyzing customer insights to understand behavior and take action to prevent churn or market the most relevant product to the right customer. Ultimately, knowing your customers better and engaging them throughout the customer lifecycle will lead to better results.

With an increasing demand to better understand and service customers and citizens, organizations are under added pressure to optimize all areas driving customer satisfaction and loyalty, which can ultimately maximize performance and increase revenue. Companies can optimize customers' lifetime value by creating tight-knit and trusting relationships with them through analytics.

Consumers are more likely to become repeat buyers and recommend a company's products to their friends and family once trust has been established. Companies earn that trust by consistently delivering the types of results and experiences customers expect and through exceeding their expectations by anticipating needs in advance.

### Scoring Big

To improve the accuracy of real-time decision making, exploit the point of interaction and build customer trust,

many companies are investing in real-time scoring of their transactional data. With access to the latest information about consumers' attitudes and opinions, it's possible to predict the most desirable outcome for the business.

Approximately 70 percent of all data transactions in the banking, insurance, retail, telecommunications, utilities and government industries originate on the System z\* platform, and many organizations now have a distinct opportunity to change the game with real-time predictive scoring.

Accurate and useful real-time scoring results depend greatly on complete, relevant and current data. The faster someone can use the latest and most relevant data in the decision-making process, the higher the quality of the decision. Because most relevant data—financial information, customer lists, personnel records and manufacturing reports—originates on the System z platform, it makes sense to bring predictive analytics to the data residing there.

The superior performance, security and scalability of System z can help organizations make the most of their predictive analytics solution. They can process and analyze the staggering volumes of ever-changing and increasingly varied data and base decisions on the

newest and most relevant information—as it's received.

For example, with the capability to understand real-time inventory, demand can be assessed and anticipated to ensure the right products are in stock and personnel is available. Or, by scoring transactional data in real-time at the point of impact, clients can reduce fraud in such applications as credit card transactions and insurance claims, or they can improve the up-sell and cross-sell of other high-volume customer marketing and sales initiatives.

### Introducing IBM SPSS Modeler 15

IBM SPSS\* Modeler helps organizations use predictive analytics to gain insight into their business and make improvements. With SPSS Modeler 15 for Linux\* on System z, they can:

➔ Integrate transactional applications running on IBM DB2\* for z/OS\* to improve the accuracy, speed and

## TAKEAWAY

- ➔ Organizations make myriad transactional decisions daily, affecting operations, customer satisfaction and, ultimately, their bottom lines.
- ➔ Real-time predictive scoring provides an opportunity to leverage this transactional data originating on the System z platform.
- ➔ The new IBM SPSS Modeler 15 delivers real-time scoring and can help organizations use predictive analytics to gain better insight from their data and make business improvements.

## IN THE BALLPARK

Approximately 70 percent of all data transactions in the banking, insurance, retail, telecommunications, utilities and government industries originate on the System z platform.

performance of real-time scoring, while reducing cost and complexity

- Create models using both structured and unstructured data
- Effectively manage the entire data-mining cycle from one workbench
- Fine-tune selected models based on statistical confidence levels
- Work with a variety of file formats pulled from (and written to) various databases for data preparation
- Automate the execution of models and deploy the results into existing systems and processes

The combination of DB2 for z/OS and SPSS Modeler increases the timeliness of scoring because it offers a more efficient, reliable process and makes it available to more users. The qualities of service of IBM System z are designed to offer improved accuracy, speed and performance in scoring data while reducing the overall cost and complexity. It scores new and relevant data directly in online transaction processing (OLTP) applications, scales to larger data volumes to improve the accuracy of data models and patterns created, and provides the performance needed to meet or exceed the service-level agreements (SLAs) of the OLTP applications and departments.

**IBM SPSS Modeler 15 for Linux on System z** is an integral part of the IBM Predictive Analytics on System z portfolio. This combination can change how organizations weave analytics into the fabric of their business to fuel the processes, decisions and actions that optimize outcomes.

### IBM Analytical Decision

**Management** is designed to optimize and automate high-velocity decisions and consistently generate results. Using IBM business analytics technologies, it provides predictive models, business rules, optimization and scoring that help organizations weave analytics into the fabric of their businesses.

**SPSS Statistics** software can help companies solve business and research problems with ad hoc analysis, hypothesis testing and predictive analytics. Organizations use it to understand data, analyze trends, forecast, plan, validate assumptions and drive accurate conclusions.

### SPSS Collaboration and Deployment Services for Linux on

**System z** provides a unified platform for IBM SPSS Modeler and IBM SPSS Decision Management, helping provide a secure, reliable and scalable foundation for the integration of analytic results into existing enterprise infrastructures.

### Linux on System z and the Analytics Environment

Combining the analytics environment with Linux on System z can eliminate

server sprawl and complexity; support energy efficiency and environmental initiatives; and meet growing security, compliance and regulatory demands. In addition, it adds value to SPSS Predictive Analytics investment with:

➤ **Timely, accurate and secure access to information.** Everything needed for business insight is on the same platform as the source data, increasing business agility while keeping data safe.

➤ **Superior scalability, availability and performance.** Organizations can scale up and out, perform without degradation in application response time, and offer continuous solution availability.

➤ **Reduced costs and complexity.** Organizations can gain a significant savings in the hardware, software, operating and labor costs associated with the management and maintenance of an enterprise predictive analytics infrastructure.

➤ **Rapid deployment and expansion.** The time associated with deploying a new predictive analytics

## The IBM Predictive Analytics on System z Portfolio

➤ SPSS Modeler 15 for Linux on System z

➤ Analytical Decision Management 7.0 for Linux on System z

➤ SPSS Statistics 20 for Linux on System z

➤ SPSS Collaboration and Deployment Services 5.0 for Linux on System z

application, increasing capacity or both can be reduced.


IBM Predictive Analytics for System z helps organizations improve their capability to gain detailed insight into present conditions and evaluate likely events and results. Because analytics is combined with System z, a single platform covers production, development, test and failover requirements without dedicating specific resources to individual needs. The dynamic allocation capabilities of System z help a predictive analytics solution get what it needs, when it needs it, without discernible delay.

### Smarter and Faster Insights

The System z platform is ideal for modern business analytics and data warehousing because its core value proposition aligns perfectly with the new requirements that changing market dynamics demand while also helping to reduce operating costs and complexity.

As those hosting transactional data on System z already realize, it's one of the most secure, available and reliable platforms on the market—one that can scale to accommodate increasing data volumes and a growing number of users. The System z platform simplifies the deployment, maintenance and management of business analytics and data warehousing solutions, and enables organizations to more easily deliver against today's aggressive business requirements.

IBM Data Warehousing and Business Analytics solutions on System z deliver a complete portfolio of business and technology solutions that help everyone—including executives, data analysts and employees on the front line—gain insight and foresight. Real-time monitoring, reporting, analysis, dashboards and a robust set of predictive analytics enable everyone

in a company to make smart, proactive business decisions. With an enterprise data warehouse infrastructure as the foundation for a business analytics investment, users are ensured consistent, secure access to accurate and timely business information. 



**Rebecca Wormleighton** is an IBM product marketing manager for Cognos software, focusing on synergies between Cognos business-intelligence software and IBM products.

## IBM Systems Magazine Webinar



### Enterprise Modernization: Brace Yourself for the Next Paradigm Shift

World-class strategies for optimizing legacy mainframe technologies within mobile, web and cloud initiatives for intelligent and agile business operations

**[ATTENDEES]** CEO, CFO, CIO, CTO, VPs and Directors of Application Infrastructure, Enterprise Architecture, Systems Programming, Systems Architects, Development Managers, Database Administrators, Application Developers, Application Architects

**[WHEN]** Tuesday, October 30 | 9 am PT/11 am CT/Noon ET

**[AGENDA]** Today's enterprises must adapt quickly to the ever-changing market demand in order to maintain competitive advantage and adopt new technologies like mobile, cloud and web applications. Companies with mainframe assets are not excluded, but must consider the practicality of rip and replace methods versus more sustainable, pragmatic and cost effective solutions. This webinar provides a holistic enterprise continuum that companies can use to evaluate where they are versus where they want to be. This webinar also provides world-class strategies to help them get there.

**[SPECIAL OFFER]** All registrants for this webinar will be entered into a drawing for a \$500 AMEX gift card!

#### [FEATURING]



**Jonathan Reed**  
VP of Marketing  
GT Software



**Chris Garner**  
SVP Research  
and Development



**Doug Rock**  
Moderator  
Publisher,  
IBM Systems  
Magazine



GT Software®



**IBM Systems**  
magazine

**REGISTER  
TODAY**

<http://ibmsystemsmag.webex.com>  
click on "Event Center"



# From Small Beginnings

## The what and why of zEnterprise millicode

By Bob Rogers

**M**ost people in the mainframe community have heard the term millicode, but what is it? The short answer is it's a form of microcode—one of the greatest ideas in computer engineering. Millicode embodies a very clever refinement of the basic idea.

First, let's start by defining microcode, which is a layer of hardware-level instructions involved in the implementation of higher-level machine code instructions. This means microcode is a set of instructions in a simple architecture used to implement the instructions of a more complex architecture.

Microcode was originally a simpler method of developing the control logic for a computer. Complex logic can be implemented with a sequence of simpler microcode instructions. Because it's essentially a program, logic errors can be fixed with a reload without making any actual hardware changes. Microcode patches can be used to work around errors in the hardware during development or even in the field.

An important part of the mainframe's history, microcode enables machines with differing internal designs and built on different hardware technologies to present a single architecture to software. Its introduction was a major contributor to the success of the IBM mainframe architecture in becoming the de facto standard for large-scale computers. Microcode made it all possible.

### A Very Brief History of Microcode

IBM used microcode to create a full line of IBM System/360 processors in the mid-1960s, covering wide ranges of price and performance. They were built on different circuit technologies yet able to run the same programs. Prior to S/360, each computer was basically a

### Historical footnote

The floppy disk was invented by IBM to provide a means to load microcode. Sometime around 1971, IBM started using 8-inch floppy disks as a medium for loading microcode into its System/370 computers prior to system IPL.

one-off with its own unique instruction set. Programs written to run on one computer would not run on the next version. As a result, programs needed to be constantly rewritten, or at least recompiled, to run on the newer, faster machines. It's hard to make progress in that sort of environment. On the other hand, it's been said that the IBM mainframe platform has amassed more than \$3 billion worth of software over the decades, all of which is able to run on the latest IBM zEnterprise\* System server.

Microcode can be used to enable an inexpensive low-end machine to look at software just like an expensive high-end computer. An example of this from the S/360 era was the Model 30. Physically, the Model 30 was an 8-bit machine with 8-bit registers and 8-bit data paths. The architected general-

purpose registers were not hardware registers at all, but actually resided in core memory. Yet, by using microcode in a read-only store (ROS), the Model 30 presented the full basic S/360 architecture—in which the registers and operations are defined—as if it were a 32-bit machine.

Programs developed on a Model 30 would run on an S/360 Model 75, which was a high-performance machine with nearly everything implemented in hardware. Customers could buy the next model up and make changes to their software. Other machines in the S/360 line implemented the simpler, more performance-sensitive S/360 instructions in hardware and the more complex, less performance-sensitive instructions in microcode. In a sense, these machines were actually two

machines—the native S/360 processor and the microcode processor—cooperating to present the complete S/360 architecture to software.

Obviously, this was a brilliant idea, and it's had a profound effect on computer design since its conception in 1953 by M.V. Wilkes.

### The Advantages of Millicode

From the days of the S/360 until the mid-1990s, most computers were designed as a symbiosis between a native processor and microcode processor. A good example of this design is one of the early complementary metal-oxide semiconductor (CMOS) processors called the IBM System/390\* 9672 G3. It used a type of microcode very similar to familiar machine language instructions, but the microcode

# Make Migrations Easy

## What Issues In Your Load Modules Will Delay Your Migration to:

- z/OS V1.13
- XL C/C++ provided in z/OS 1.13
- Enterprise PL/I V4.2
- Enterprise COBOL V4.2
- The latest versions of DB2 and CICS

## Make Migration Less Traumatic With Edge Portfolio Analyzer v1.7.3

Whenever you migrate to a new environment, you must know the status of all the load modules in your applications. Unless you are sure of what your current portfolio contains, unexpected problems will pop up, adding time and expense to your migration project.

The Edge Portfolio Analyzer equips you to prepare for these migrations by giving you a clear picture of your application inventory ... so you can identify potential problems before they can disrupt your project.

**Get Your FREE  
General Information Manual**

Go to [www.edge-information.com](http://www.edge-information.com)  
or Call 847-297-2020



architecture was much simpler than the target S/390\* architecture. Most of the frequently used simple instructions were implemented directly in hardware. The more complex functions were implemented in microcode that ran on a distinct microcode processor, which acted somewhat like a coprocessor. The microcode programs were executed from special memory.

Because more microcode existed than could fit into the special microcode memory, the microcode for some instructions had to be paged in from regular memory before execution. This was a reasonable design but not for very high performance.

The next IBM mainframe processor, the IBM S/390 9672 G4, was quite different. It had a lot of microcode but no distinct microcode processor. It ran the microcode on the native processor and eliminated the need to design and build a separate microcode processor. The microcode language was a subset of the S/390 architecture—of course with some additions—so the microcode of this processor, being of a higher level than typical microcode, was dubbed millicode.

Besides the elimination of the separate microcode processor, there's another great advantage to running millicode on the native processor. A large amount of time and money go into the design and fabrication of the native engine to achieve maximum performance. The System z\* processor of the latest zEnterprise System, the z196, is a high-frequency, superscalar, out-of-order instruction processor with four levels of processor cache. The complexity of the z196 is nearly beyond comprehension. Since the millicode is executed just like normal z/Architecture\* code, it benefits from this performance optimization. By contrast, microcode processors of the past were always much simpler and slower than the native processor they worked with. Therefore, they were

getting comparatively slower with each processor generation.

Of course, for the millicode to do its job while running on the native processor, some additional hardware has to be added to that processor. It must have an additional execution mode, called millimode, to execute it. This requires distinct registers (general purpose, access and control registers), an instruction address register, and other special registers. There must be additional instructions available only in millimode, for example, to move values between the architected and millicode registers, and to control hardware capabilities not available through the architected instruction set. When millicode is entered to execute an instruction, the hardware also does some initialization processing, like simple validity checking and setting up millicode registers.

### Why Millicode?

Processor designers will provide an instruction implemented in millicode for numerous reasons:

- Complex instructions can be implemented with reasonable engineering expense. Conversely, the ability to implement instructions in millicode provides the freedom to define very complex instructions. Examples include program call (PC) and program return (PR), compare and form codeword (CFC) and update tree (UPT), which are used for sorting.
- Compatibility can be provided across processor generations by an early implementation in millicode preceding a higher performance implementation in hardware. Examples of this are the Long Displacement Facility in zSeries\* z900 and the Decimal Floating Point Facility in zSeries z990.
- It has access to hardware facilities that are not available to normal code. One instance of this is move character long (MVCL) when

the operands are 4K blocks on 4K boundaries. The millicode has access to a special hardware data mover that doesn't drag the data through CPU cache but moves it directly from memory to memory.

- Instructions can perform multiple storage updates without fear of interruption. A primary example of this is perform locked operation (PLO); another example is extract CPU time (ECTR).

- It runs with high authorization. This allows well-defined operations that require authorization to be performed without needing to invoke the OS. The branch and stack (BAKR) instruction, for instance, saves registers and other status into storage that the application doesn't have authority to access.

- A millicoded instruction can provide common functions almost like subroutines. This can help avoid code bloat. This is seen in MVCL, particularly its padding capability, and compare character long (CLCL), which can even compare strings of different lengths.

### Massive Impact

On the 9672 G4, and all succeeding IBM mainframe processors, millicode is used for much more than implementing complex instructions. It augments hardware in the areas of system configuration and initialization, virtualization for logical partitioning, I/O functions, interrupt-processing and other control functions, reliability, availability and serviceability (RAS), recovery, and instrumentation. Millicode running on the native processor is a major element in every aspect of the modern mainframe. [Z](#)



**Bob Rogers** is a z/OS designer and evangelist. An IBM Distinguished Engineer, he frequently presents at SHARE and other conferences.



# Simplifying Data Management in a Big Data World

**New DFSMS features  
increase the availability  
of data on System z**

**By Cecilia Carranza Lewis,  
Terri Menendez and  
Jaya Srikrishnan**

**D**ata sources have increased exponentially in the past decade. IDC estimated in a July 2011 study that worldwide data volumes double every two years.

While traditional data sources yield a larger and more varied set of information, new sources are added almost daily. The volume of information from each source also grows as computing capacity is added to the smallest of gadgets.

For each person on the planet, an estimated 45 GB of data exists. Most of it ends up stored in corporate IT departments, with up to 1.8 trillion GB created in 2011. Experts predict that number will grow 60 percent annually. The cost of managing this data is staggering. Not only does it require growth in storage media, but also in administrative expense for managing it all.

The Data Facility Storage Management Subsystem (DFSMS) was originally developed to reduce the administrative cost of managing storage and data, but it also works effectively with other components in z/OS\* and storage hardware to more efficiently

manage storage. Two examples of this are Extended Address Volumes (EAVs) and Control Area (CA) Reclaim in the VSAM access method.

## **Extended Address Volumes**

EAVs were introduced with the IBM TotalStorage\* DS8000\* family of products to provide relief to customers constrained by disk capacity growth as they approached the device number limit. EAVs are defined as volumes with more than 65,520 cylinders and supported only with 3390 Model A devices. In z/OS V1.10, EAVs four times as large as the prior maximum size volume (54 GB) could be created, enabling

volume growth up to 223 GB, or 262,668 cylinders.

However, with continued rapid data growth some customers required greater capacity. On z/OS V1.13, EAVs can grow by another factor of four, or up to 1 TB of disk storage per volume, equivalent to 1.182 million cylinders. Yet some customers predict exceeding this newer EAV maximum size within five years.

Incorporating EAVs into an installation does more than relieve disk capacity constraints. It also allows growth without adding more devices. The ability to manage more data with fewer volumes helps simplify the job of storage administrators. When additional capacity is required, they can increase volume capacity while keeping the volume online through another

## Managing Big Data

The amount of data continues to grow with no end in sight. Managing it takes increasing effort. Two new features in the Data Facility Storage Management Subsystem (DFSMS) can simplify the management of growing data on the IBM System z\* platform:

**1** Extended Address Volumes (EAVs) allow an installation to increase disk capacity to support an aggressive data-growth rate without adding more devices.

**2** Control Area (CA) Reclaim enables the reuse of CAs, eliminating the need for costly VSAM data set reorganizations.

In both cases, DFSMS can increase the availability of data with less manual effort on the part of the storage administrator.

—C.C.L., T.M. and J.S.

## EAVs are well positioned to handle the increasing rate of data storage with an architectural limit supporting hundreds of terabytes.

important storage feature, dynamic volume expansion (DVE).

This can eliminate the need to migrate data to new volumes; even better, it can eliminate the need to quiesce applications to take the volume offline. One exception is that copy services relationships—FlashCopy, peer-to-peer remote copy or extended remote copy—must be quiesced prior to volume expansion.

To manage performance for larger volumes, storage administrators can take advantage of the Hyper Parallel Access Volume (HyperPAV) function of the DS8000 family, which enhances management of concurrent I/O requests. HyperPAV technology allows the assignment of PAVs, as needed, to reduce the need to queue-optimize concurrent I/O requests. EAV, DVE and HyperPAV work together to simplify data growth.

Introducing EAVs takes only a few steps:

➔ First, use the tracking facility (CNZTRKR) to help detect which applications might need changes to work with EAVs before creating one. This will identify jobs, program names and program offsets where changes might be needed. In addition, refer to the EAV migration considerations documented in the IBM publication “DFSMS: Using the New Functions Starting With z/OS V1R10.”

➔ Next, configure EAVs on your DS8000 storage system by creating a new EAV or expanding an existing volume using DVE. Add EAVs to the appropriate storage groups.

Specify EATTR when appropriate to override system-determined data set eligibility for placement in the extended addressing space (EAS) of the EAVs. EATTR is specifiable in IDCAMS, JCL, dynamic allocation, System Managed Storage (SMS) data classes and ISPF. Allow the system to allocate new data sets on an EAV by specifying USEEAV=YES in SMS PARMLIB member IGDSMSxx. SMS policy can now begin to take advantage of the additional capacity.

Even without constraints on the number of devices, EAVs are an attractive way to simplify overall storage management. Significant additional capacity with less storage management is a storage administrator’s dream. Additionally, EAVs are well positioned to handle the increasing rate of data storage with an architectural limit supporting hundreds of terabytes.

### Control Area Reclaim

The term “big data” and the phrase “a world that never sleeps” may be familiar to many, however, few understand the pressure these place on data-access methods. No matter how big the data is, or where requests originate, access rates must keep pace. Even our most trusted access methods must keep up with a demanding online world. This is especially true for one of the most popular access methods, VSAM, and its most-used structure, the key sequenced data set (KSDS).

KSDSs provide high-performance, direct data access by using a B-tree style index structure that tracks individual



data record locations in each data set. Unique keys stored within data records—defined by programmers when data sets are defined—are used to locate records. KSDSs comprise two physical components, the index and data components. Index components contain the index structures, and data components contain actual user data records.

KSDS index structures consist of individual sequence set (SS) records. Each points to a logical grouping of data records or CAs. Each CA is divided into smaller record groupings called control intervals (CIs). An SS record points to a CI by saving the highest key value for the CI. CIs are the units of storage used to transfer VSAM data records.

When more than one SS record exists, higher-level index records, referred to as the index set, are added to point to groupings of SS records. Each SS record is pointed to by saving the high key for each record, allowing VSAM to quickly conduct a B-tree or top-down type search for a given key. SS records are also chained, allowing the flexibility of both sequential and random data access. While KSDSs provide flexible, efficient data access, VSAM performs complex space management activities to allow records to be inserted or erased anywhere in the data set.

When records are inserted into a KSDS and new space is required, a new CI is obtained. Half of the records are moved into the new CI, splitting the CI into two parts. If the SS record runs out of space during a CI split, the index record is split in two, resulting in a CA split. When all of the records in a CI are erased, it is reclaimed and can be used for new CI splits within the same CA. However, when all of the records in a CA are erased, the CA is not reclaimed. The high key for CA is saved even though no records exist in it and can only be reused if keys in the same range are again inserted into the data set.

The existence of empty CAs can be considered a fragmentation issue and may result in both performance and space problems for the data set. When CAs cannot be reused, new CAs must be obtained, unnecessarily increasing the data set sizes and potentially the

number of index levels. Size increases can result in out-of-space conditions, and increasing index levels can lengthen direct searches. Additionally, sequential searches will take longer because SS records and empty data CIs must be retrieved to determine if any

**IBMSYSTEMS**  
MAGAZINE

**WEBINAR**

## **New Q4 System z Announcements: New zEnterprise EC12 System Delivering Maximum Efficiency, Securing Information and Delivering Insights**

### **WHO SHOULD ATTEND**

**C-Level (CIO, CTO), IT Developers, IT Managers,  
existing mainframe customers**

### **WHEN**

**Wednesday, October 17<sup>th</sup>  
8 am PT/10 am CT/11 am ET**



### **AGENDA**

In the new era of computing, information-centric processes are exploding in growth. The mainframe has always been the IT industry's leading platform for transaction processing, consolidated and secure data serving, and support for available enterprise-wide applications. IBM is extending the mainframe platform to help large enterprises reshape their customer experiences through information centric computing and to deliver on key business initiatives.

This webcast will discuss how the new IBM zEnterprise EC12 System and Software will help organizations make the transition from the process centric, programmable era of IT to the information centric, cognitive era of IT through key capabilities.

### **FEATURING**



**Ray Jones**  
Vice President of  
Worldwide System z  
Software Sales



Moderator  
**Doug Rock**  
Publisher of  
IBM Systems  
Magazine

**REGISTER TODAY!**

<http://ibmsystemsmag.webex.com>  
click on "Event Center."

## Administrator

records exist in the CA. When VSAM buffering is active, performance may be affected because empty SS and data CIs can consume valuable buffer space.

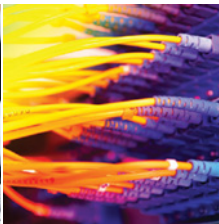
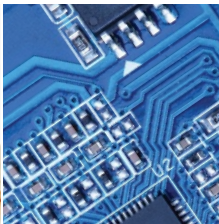
Before z/OS V1.12, the only remedy for fragmented KSDSs was to

take data sets offline and reload the data records. This process removes empty CAs, reducing the overall size of the data set and restoring performance. With z/OS V1.12, VSAM provides a new enhancement,

CA Reclaim, which will reclaim SS and index set records when the last record is deleted from a CA. Reclaimed index records are placed on free-chains to be reused for CA splits anywhere in the data set. Reusing CAs can control data set growth and helps stabilize performance.

# 2012 IBM Technical Events (Americas)

A smarter planet starts with you



Build your skills with IBM Training

Learn from product developers and industry experts. Expand your IT education by attending one of the many technical events on our schedule for 2012. IBM events offer in-depth information on recent technical product announcements, tips and techniques you can apply immediately, hands-on labs, discounted certification testing at select events, and provide a great opportunity to network with others.

DATE	EVENT	LOCATION
October 1 - October 5, 2012	2012 IBM System z Technical University	Las Vegas, Nevada
October 21 - October 25, 2012	Information On Demand 2012	Las Vegas, Nevada
October 23 - October 25, 2012	2012 IBM Systems Conference	San Paulo, Brazil
October 29 - November 2, 2012	2012 IBM Power Systems Technical University	Las Vegas, Nevada


**SAVE THE DATES!**  
[ibm.com/training/us/conf](http://ibm.com/training/us/conf)

Attention Exhibiting Sponsors: Exhibitor and sponsorship opportunities are available. For more information, visit our web site, click on the event of your choice and then click on sponsor/exhibitor details.



### Nothing to Fear

With z/OS V1.12 and CA Reclaim, VSAM demonstrates that the most trusted mature access method still rises to the challenge, meeting the demands of a rapidly expanding computerized world. Big data and a world that never sleeps might be today's reality, but with VSAM, they are nothing to be afraid of.

With EAVs and CA Reclaim technologies, the z/OS technology and DS8000 family of products are working together to make it easier for storage administrators to handle data growth with minimal impact to availability and without compromising performance or adding complexity. 



**Cecilia Carranza Lewis** is a senior technical staff member, holding numerous technical leadership positions related to z/OS, within the IBM Systems and Technology Group.



**Terri Menendez** is a senior technical staff member in the IBM Systems and Technology Group and the chief architect for the VSAM CA Reclaim function.



**Jaya Srikrishnan** is a Master Inventor and Distinguished Engineer in IBM's Systems and Technology Group, and has worked in software and firmware for more than 25 years.

## Solutions

What's new  
in the  
marketplace

### CICS JS/Server V1.1

Matter of Fact Software

A new offering, CICS\* JS/Server V1.1, allows the Dojo Javascript\* Toolkit to be installed and controlled on the IBM mainframe in partitioned data sets and served to Web applications via CICS. Such Javascript tools are frequently used

for rapid development of browser-based UI functions. The CICS JS/Server:

Features simple installation and implementation

Can scale to meet the needs of high-performance systems

Supports Dojo Javascript Toolkit, V.1.5.1, 1.6.1 and 1.7.2

🖥️ **OS SUPPORT:** z/OS\* 1.10 and above;

CICS TS versions 3.1 and above

💰 **PRICE:** Variable

🌐 **URL:** [www.plexspy.co.uk](http://www.plexspy.co.uk)

### DR/VFI

21st Century Software

The latest release of the mainframe data-protection solution DR/VFI 4.4 includes new features and functionality that can enhance real-time operational recovery and can provide a guaranteed recovery time regardless of the application and assurance of meeting business service-level agreements. New features include:

Enhanced virtual recovery simulator functionality, which pre-evaluates applications' capability to recover within the production environment

Enhanced in-flight data reporting, a real-time component that provides a point-in-time indication of opened files, both VSAM and non-VSAM, and those potentially in a compromised state

Virtual tape reconciliation for replicated environments that—in conjunction with in-flight data reporting—provides an accurate depiction of compromised data

The Real-Time SMF RT/SMF logger to capture and archive significant real-time events

🖥️ **OS SUPPORT:** Up to z/OS\* 1.13

💰 **PRICE:** Variable

🌐 **URL:** [www.21stcenturysoftware.com](http://www.21stcenturysoftware.com)

### JCL-QA

DTS Software

DTS Software introduces JCL-QA, a new product within the MONitor suite that performs JCL analysis, validation and reporting. Expanded from the base Scan JCL feature in MONitor, JCL-QA uses the z/OS\* Converter/Interpreter to perform JCL conversion and then scans the converted data definition statements to extract necessary data set usage information. The new release can:

Scan individual JCL job streams, entire libraries or job streams extracted from job scheduling systems

Enforce installation standards

Perform system validation tests on local or remote systems running JCL-QA

Process system-created control blocks and drive them through validation routines or installation rules for standards enforcement

🖥️ **OS SUPPORT:** All z/OS versions

💰 **PRICE:** Variable

🌐 **URL:** [www.dtssoftware.com](http://www.dtssoftware.com)

## Resources Advertisers Index

RESOURCE	PAGE
Advanced Software Products Group, Inc. <a href="http://www.aspg.com">www.aspg.com</a>	11
DTS Software, Inc. <a href="http://www.DTSsoftware.com">www.DTSsoftware.com</a>	21
Compuware <a href="http://www.compuware.com/mainframe">www.compuware.com/mainframe</a>	25
Edge Information Group <a href="http://www.edge-information.com">www.edge-information.com</a>	33
GT Software, Inc. <a href="http://ibmsystemsmag.webex.com">http://ibmsystemsmag.webex.com</a> , click on "Event Center"	31
IBM Tech Conferences <a href="http://ibm.com/training/us/conf">ibm.com/training/us/conf</a> <a href="http://ibm.com/training/us/conf/systemz">ibm.com/training/us/conf/systemz</a>	38, C3
IBM Webinar <a href="http://ibmsystemsmag.webex.com">http://ibmsystemsmag.webex.com</a> , click on "Event Center"	9, 37
Innovation Data Processing <a href="http://www.innovationdp.fdr.com">www.innovationdp.fdr.com</a>	C1, C4
Jolly Giant Software, Inc. <a href="mailto:www.sales@jollygiant.com">www.sales@jollygiant.com</a>	4
MVS Solutions, Inc. <a href="http://www.mvssol.com">www.mvssol.com</a>	1
Open Tech Systems, Inc <a href="http://www.opentechsystems.com">www.opentechsystems.com</a>	C2
Relational Architects International <a href="http://www.relarc.com">www.relarc.com</a>	3
Share Organization <a href="http://www.SHARE.org">www.SHARE.org</a>	12
Trident Services, Inc. <a href="http://www.triserv.com">www.triserv.com</a>	5
Unicom Systems <a href="http://www.unicomsi.com/group.html">www.unicomsi.com/group.html</a>	13
Visara International <a href="http://www.visara.com">www.visara.com</a>	27



## A Big Iron Golden Anniversary

A 1440 data processing system finds new life after 50 years **By Ryan Rhodes**

**F**ifty years ago, IBM unveiled its second printed circuit data processing system, the 1440. This accounting and business information system was targeted to “smaller volume businesses,” although the system still required its own room.

Essentially a lower-cost version of the 1401, the 1440 didn't quite attain the same commercial success. As such, 1440 components—designed and built in Endicott, N.Y.—are difficult to find.

To preserve historical computing technologies like the IBM 1440—a precursor to the modern mainframe—entities have emerged such as the Binghamton, N.Y.-based Center for Technology & Innovation (CT&I) and its TechWorks! Prototype Workshop.

“Electronic packaging and miniaturization are huge advances made by IBM Endicott,” says Susan Sherwood, CT&I executive director. “The 1440 is a very interesting midpoint in that packaging evolution, which is why we're so interested in it.”

With its IBM 1440 Project, CT&I is bringing together original 1440 components and restoring operational functionality. To date, the center has procured a 1441 processing unit, a 1447 console and a 1311 disk drive—as well as cables and manuals—largely on loan from

the IBM Archives. In March, it acquired one of only three known IBM 1442 Card Readers, which was in much better condition than some 1440 devices.

“Some of these things had been in storage for 20-plus years, so several of the gates that contained circuit cards were loaded—saturated really—with mouse nests,” says Fred Petras, a project team member. “So, we had a considerable cleanup task before we could even get to the point where we could power it on.”

After the 1440 was cleaned, it hummed with life for the first time in decades, and the team exercised system functions using the original programming language and established communications among the various components.


“I think the IBM corporate archivist who acquired the 1440 system and transferred it to us would have been happy if it simply looked good, but we're going a little further than that,” Sherwood says. “At TechWorks!, we want

The IBM 1440 is displayed in this brochure image circa 1962.



to delve a bit deeper and show how things work. We don't want to display machines that just sit around, but rather, machines that actually function.”

The 1442 Card Reader is the only 1440 component on hand with visibly moving parts, which will allow visitors to see card decks being read, processed and then output punched results. Sherwood would like to procure an IBM 1403 chain printer fast enough to play music from a card deck, thereby completing a 1440 system. It would likely be the only such fully functional system.

“We may not have the complete system up and working by the 50th anniversary date [Oct. 11], but we'll have most of the 1440 components running, which is a pretty impressive accomplishment considering we started with a system clogged with mouse nests,” Petras adds. 



**Ryan Rhodes** is a freelance writer for *IBM Systems Magazine*.

Enabling the infrastructure for smarter computing

# 2012 IBM System z Technical University

October 1 - 5 | Caesars Palace | Las Vegas, NV

**Enroll  
today!**

*Save 12% off full  
tuition enrollment  
using code A2M*

Plan now to attend the 2012 IBM System z® Technical University, a premier System z Enterprise event, featuring zEnterprise®, z/OS®, z/VM®, z/VSE® and Linux on System z. This event has expanded coverage of System z software, including DB2®, CICS®, MQSeries®, WebSphere®, IMS™, Cognos® and more.

Here is a sampling of the sessions where you can hear the most recent IBM® System z® product direction and developments.

- Main Tent with Greg Lotko, IBM Vice President and Business Line Executive, System z, Ray Jones, Vice President, System z Software, Worldwide Sales and Bernard S. Meyerson, Ph.D. IBM Fellow, Vice President, Innovation
- IBM zEnterprise Server Processor Technology: Latest Status and Directions
- IBM zEnterprise Server I/O Technology: Latest Status and Directions
- What's new in IBM z/OS Support for the Latest Server
- IBM z/VM 6.2 Migration to Single System Image Hands-on Lab
- z/VM and Linux on System z Performance "Best Practices"
- The latest z/VSE 5.1, the new functions and zEnterprise advantages

*You can use IBM Education Packs or PartnerRewards Education Vouchers\* to pay the tuition for these events!*

[ibm.com/training/us/conf/systemz](http://ibm.com/training/us/conf/systemz)  
[twitter.com/IBMTechConfs](https://twitter.com/IBMTechConfs)

Sponsor and Exhibitor opportunities available.

Visit [ibm.com/systems/conferenceseries/solutioncenter](http://ibm.com/systems/conferenceseries/solutioncenter)

*\*The PartnerReward program is for IBM Business Partners and is not available in all geographies. Savings offers, such as ed packs, vouchers, coupons, promotions and any other discounts cannot be combined.*

IBM, the IBM logo, ibm.com, CICS, Cognos, DB2, IMS, MQSeries, Smarter Planet, System z, WebSphere, zEnterprise, z/OS, z/VM and z/VSE are trademarks or registered trademarks of International Business Machines Corporation in the United States, other countries, or both. A current list of IBM trademarks is available on the Web at "Copyright and trademark information" at [ibm.com/legal/copytrade.shtml](http://ibm.com/legal/copytrade.shtml). Linux is a registered trademark of Linux Torvalds in the United States, other countries, or both.





***It's about Time you convert your VSAM files to IAM...***

**See significant reduction in batch run times and online response time.**

**IAM** continues to offer outstanding performance and reliability for VSAM-based applications. Despite all the hardware and software changes that have occurred in the last 40 years, **IAM** still outperforms VSAM. Even compared to enhancements like VSAM SMB, VSAM LSR, hardware compression and extended format files, the **IAM** structure provides better performance and takes less CPU time, DASD space and EXCPs than VSAM.

**IAM/PLEX (Cost option) provides z/OS SYSPLEX Record Level Sharing (RLS) for IAM datasets across multiple z/OS systems and LPARS.**

**Testimonial:** Our credit card application continues to grow. Our batch nightly cycle was taking almost 4 hours. We converted the VSAM files to **IAM** and the batch cycle now takes less than 1½ hours. **IAM** has also improved our online CICS Performance.

**Testimonial:** Our workload has increased significantly which impacted our SLA with our offices outside the USA. **IAM** reduced our batch VSAM runs by more than 70%.

**Testimonial:** We have a large VSAM batch application that is run by an outsourcing company. **IAM** allows us to cut our monthly charges by more than 60%.

**Testimonial:** Now that the folks here are seeing the benefits of **IAM**, there is a move afoot to convert all application VSAM files to **IAM**.



Request your FREE copy of the **IAM** White Paper and see how **IAM** can help you speed up your daily processing without a CPU upgrade. **IAM** is available on a FREE, No-Obligation 90-Day Trial. Call: 973-890-7300, e-mail: [sales@fdrinnovation.com](mailto:sales@fdrinnovation.com) or visit [www.fdr.com/IAMtime](http://www.fdr.com/IAMtime)



**Visit us at: IBM System z Technical University October 1-3, 2012 Las Vegas, NV**



**CORPORATE HEADQUARTERS:** 275 Paterson Ave., Little Falls, NJ 07424 • (973) 890-7300 • Fax: (973) 890-7147  
**E-mail:** [support@fdrinnovation.com](mailto:support@fdrinnovation.com) • [sales@fdrinnovation.com](mailto:sales@fdrinnovation.com) • <http://www.innovationdp.fdr.com>

<b>EUROPEAN OFFICES:</b>	FRANCE 01-49-69-94-02	GERMANY 089-489-0210	NETHERLANDS 036-534-1660	UNITED KINGDOM 0208-905-1266	NORDIC COUNTRIES +31-36-534-1660
--------------------------	--------------------------	-------------------------	-----------------------------	---------------------------------	-------------------------------------



# Reference Point

Global Events, Education, Resources for Mainframe

## Upcoming Events and Education

September 11-14

**IBM System z and Storage Systems  
Technical Symposium**

Chennai, India

[http://www.ibmssystemsmag.com/mainframe/  
events/IBM-System-z-and-Storage-Systems-  
Technical-Symposi/](http://www.ibmssystemsmag.com/mainframe/events/IBM-System-z-and-Storage-Systems-Technical-Symposi/)

October 1-5

**System z Technical University**

Las Vegas

[http://www.ibmssystemsmag.com/mainframe/  
events/System-z-Technical-University/](http://www.ibmssystemsmag.com/mainframe/events/System-z-Technical-University/)

October 15-19

**IBM System x Technical University**

Budapest

[http://www.ibmssystemsmag.com/mainframe/  
events/IBM-System-x-Technical-University--  
Budapest/](http://www.ibmssystemsmag.com/mainframe/events/IBM-System-x-Technical-University--Budapest/)

October 15-19

**IBM System Storage Technical University**

Budapest

[http://www.ibmssystemsmag.com/mainframe/  
events/IBM-System-Storage-Technical-Uni-  
versity----Budapes/](http://www.ibmssystemsmag.com/mainframe/events/IBM-System-Storage-Technical-University----Budapes/)

October 15-18

**IBM WebSphere Technical Convention**

Berlin

[http://www.ibmssystemsmag.com/mainframe/  
events/IBM-WebSphere-Technical-Conven-  
tion/](http://www.ibmssystemsmag.com/mainframe/events/IBM-WebSphere-Technical-Conven-tion/)

October 15-19

**IBM SmartCloud Symposium  
Budapest**

[http://www.ibmssystemsmag.com/mainframe/  
events/IBMSmartCloud-Symposium--Buda-  
pest/](http://www.ibmssystemsmag.com/mainframe/events/IBMSmartCloud-Symposium--Buda-pest/)

October 21-25

**Information on Demand 2012**

[http://www.ibmssystemsmag.com/mainframe/  
events/Information-On-Demand-2012/](http://www.ibmssystemsmag.com/mainframe/events/Information-On-Demand-2012/)

November 5-7

**LinuxCon Europe 2012**

Barcelona

[http://www.ibmssystemsmag.com/mainframe/  
events/LinuxCon-Europe-2012/](http://www.ibmssystemsmag.com/mainframe/events/LinuxCon-Europe-2012/)

November 13-15

**IBM Systems Technical Symposium**

Auckland

[http://www.ibmssystemsmag.com/mainframe/  
events/IBM-Systems-Technical-Symposium--  
Auckland/](http://www.ibmssystemsmag.com/mainframe/events/IBM-Systems-Technical-Symposium--Auckland/)

## Web Exclusive Content

**IBM Researchers Work on New Ways to  
Combat Life-Threatening Bacteria**

[http://www.ibmssystemsmag.com/mainframe/  
trends/IBM-Research/ibm\\_research\\_superbugs/](http://www.ibmssystemsmag.com/mainframe/trends/IBM-Research/ibm_research_superbugs/)

**How JES2 Manages a Smoother Spool  
Migration**

[http://www.ibmssystemsmag.com/mainframe/ad-  
ministrator/migration/spool\\_migration\\_part2/](http://www.ibmssystemsmag.com/mainframe/administrator/migration/spool_migration_part2/)

## EXTRA Exclusive Features

**SPSS Modeler 15 Delivers Real- Time Scoring  
of Transactional Data in DB2 10 for z/OS**

[http://www.ibmssystemsmag.com/mainframe/  
trends/IBM-Announcements/real\\_time\\_scoring/](http://www.ibmssystemsmag.com/mainframe/trends/IBM-Announcements/real_time_scoring/)

**Ponder Stakeholders' Questions Before  
Pitching an Upgrade**

[http://www.ibmssystemsmag.com/mainframe/tip-  
stechniques/miscellaneous/upgrade\\_pitch/](http://www.ibmssystemsmag.com/mainframe/tipstechniques/miscellaneous/upgrade_pitch/)

**JES2 Runtime Ensures Data Access  
During Spool Migration**

[http://www.ibmssystemsmag.com/mainframe/ad-  
ministrator/migration/spool\\_migration\\_part3/](http://www.ibmssystemsmag.com/mainframe/administrator/migration/spool_migration_part3/)

**REXX Programmers Shouldn't  
Overlook 'Stacks'**

[http://www.ibmssystemsmag.com/mainframe/  
tipstechniques/applicationdevelopment/  
rexx\\_stacks/](http://www.ibmssystemsmag.com/mainframe/tipstechniques/applicationdevelopment/rexx_stacks/)

**SUBSCRIBE NOW to EXTRA eNewsletters.**

## Buyer's Guide

Find Mainframe products and services  
in the online Buyer's Guide.

**SEARCH NOW**

**2013**

**MAINFRAME**

**BUYER'S GUIDE**

**Z/OS**

**SERVICES**

**HARDWARE**

**MVS**

**SOFTWARE**

**LINUX**



*Reduce  
Hardware  
Software &  
H.R. Costs  
with...*

*z/OSEM*

*This moment of tranquility  
brought to you by*

**TRIDENT**  
S E R V I C E S

Solutions for z/OS & Enterprise Servers since 1978

**Call now 1-800-887-4336**

[www.triserv.com](http://www.triserv.com)





# Innovation, Quality and Investment Protection

Established in 1992, SUSE® is the original provider of the enterprise Linux distribution. With a portfolio centered on SUSE Linux Enterprise, the most interoperable platform for mission-critical computing, and Linux solutions that increase agility, reduce cost and manage complexity, SUSE enables organizations to confidently deliver computing services across physical, virtual and cloud environments. With our award-winning products and ecosystem of partnerships, SUSE solutions empower thousands of organizations around the world. For more information, visit [www.suse.com](http://www.suse.com)



## SUSE Linux Enterprise Server for System z: Optimized for IBM Mainframes

SUSE Linux Enterprise Server for System z offers you an alternative to x86 platforms for virtualizing Linux, UNIX and Windows workloads. When you consolidate servers using SUSE Linux Enterprise Server for System z, you are leveraging the resiliency of the mainframe, the power of SUSE Linux Enterprise Server and the hypervisor capabilities of z/VM. This allows you to create virtual environments that lower total cost of ownership, reduce data center complexity, increase flexibility and decrease downtime. As the market share leader for Linux on mainframes, we ensure that you have access to the largest number of open source and proprietary applications and receive the best support in the industry. Learn more at [www.suse.com/products/systemz/](http://www.suse.com/products/systemz/)



## An Extra Level of Assurance Thanks to SUSE Linux Enterprise High Availability Extension

IBM mainframes are known to run for years without interruption. However, your internal policies and customers' service level agreements may require even higher levels of protection for

your data and workloads. You can implement these with the SUSE Linux Enterprise High Availability Extension. SUSE Linux Enterprise Server for System z is the only operating system for mainframes that includes these advanced high availability services with every subscription—all for free. The SUSE Linux Enterprise High Availability Extension offers you the only clustered file system on the planet for Linux on System z, and delivers all the essential monitoring, messaging and cluster resource management features in an integrated suite of open source technologies. Learn more at [www.suse.com/products/highavailability/](http://www.suse.com/products/highavailability/)



## Manage Your Physical and Virtual Linux Servers with SUSE Manager

SUSE Manager delivers best-in-class capabilities that enable enterprises to comprehensively manage Linux servers with a single centralized solution. It provides automated and cost-effective software/update management, asset management, system provisioning and monitoring capabilities. This enables customers to easily manage Linux server deployments across physical, virtual and cloud environments. SUSE Manager can also manage Linux virtual machines on System z. Learn more at [www.suse.com/products/suse-manager/](http://www.suse.com/products/suse-manager/)



## SUSE Studio Boosts Your Mainframe Workload Image Deployments

SUSE Studio provides a new and simple way to create, maintain and deploy System z workload images by automating routine, labor-intensive tasks. You can automate the assembly of new System z images, normally a time consuming endeavor, thus increasing efficiencies and reducing complexity. SUSE Studio simplifies the creation, testing and maintenance of

images for System z and leverages the same easy-to-use interface for building mainframe workloads and images for x86 systems. Learn more at [www.suse.com/products/susestudio/](http://www.suse.com/products/susestudio/)



## Hybrid Computing with IBM zEnterprise System and SUSE Linux Enterprise Server

IBM zEnterprise System combines heterogeneous architectures into a “system of systems” configured, managed and operated holistically. Complementing this unique hybrid approach, SUSE Linux Enterprise Server is the ideal environment for maximizing capabilities, productivity and reliability of all IBM zEnterprise System components. Running SUSE Linux Enterprise Server for System z on IBM zEnterprise? Benefit from our special offer to run SUSE Linux Enterprise Server on the attached IBM zEnterprise BladeCenter Extensions: [www.suse.com/partners/alliance-partners/ibm/mainframe/zbx.html](http://www.suse.com/partners/alliance-partners/ibm/mainframe/zbx.html)

© 2012, SUSE. All Rights Reserved. SUSE and the SUSE logo are registered trademarks of Novell, Inc. in the United States and other countries. All other third-party trademarks are the property of their respective owners.





A commitment to excellence!



Finally! All of the power and quality of the z/XDC debugger can now be enjoyed by mainframe C, C++ and Metal C programmers!



The comprehensive Assembler Development Tool for Mainframers. From the simple to the complex, z/XDC supports nearly every z/OS execution environment there is!

We stay on the "bleeding edge" so you can too.



The world's first Event Profiler! A totally new way to gather resource statistics.



800-XDC-5150

www.colesoft.com



## T A B L E O F C O N T E N T S

**Using the Guide** 7

### Company Showcases 10

21st Century Software Inc.	10
Action Software International	11
Acxiom	12
Applied Software Inc.	12
ASG Software Solutions	13
Advanced Software Products Group Inc.	14
BMC Software	16
CA Technologies	18
Compuware	19
CSI International	20
Data 21 Inc.	21
Direct Computer Resources	21
DINO Software Corp.	21
DTS Software	22
Eaton Corp.	23
GFS Software Inc.	23
GT Software	25
INNOVATION Data Processing	26
NewEra Software Inc.	28
OpenTech Systems Inc.	29
PKWARE Inc.	30
Serena Software	31
Sirius Computer Solutions	32
Syncsort Inc.	32
SysperTec	32
Treehouse Software	32
Tributary Systems Inc.	33
Trident Services	34
Vanguard Integrity Professionals Inc.	35
Visara International	36
Xbridge Systems	36

**Product Index** 37



Enabling the infrastructure for smarter computing

# IBM Systems Technical University and Symposium Series

The hot spots for learning about the latest in IBM Systems technologies

ENROLL EARLY for BIGGER SAVINGS!  
**Explore  
today!**

IBM® has over 100 years of innovation, bold risks and transformative breakthroughs. Continue with us into the next century by attending an IBM Technical University or Symposium in countries around the world. Enhance your skills at one of our 30+ technical training events in a country near you with:

- Supporting IBM Systems platforms: IBM PureSystems, IBM Power Systems, IBM System Storage, IBM System x, and IBM System z
- A deep dive into the latest product announcements
- “How to” technical classes taught by product experts
- Hands-on demos, labs and workshops
- Tips on best practices and lessons learned
- Access to product developers
- Networking gatherings
- Panel discussions on real-time challenges
- Discounted certification testing at most events

*Don't miss the chance to mingle with IBM's most successful business thought leaders and technology innovators!*

[ibm.com/systems/conferenceseries/](http://ibm.com/systems/conferenceseries/)  
[twitter.com/IBMTechConfs](https://twitter.com/IBMTechConfs)

Sponsor and Exhibitor opportunities available. Visit [ibm.com/systems/services/conferenceseries/solutioncenter](http://ibm.com/systems/services/conferenceseries/solutioncenter)

## Get the Most From the Guide

The 2013 Mainframe Buyer's Guide is our latest installment of this valuable resource for all things mainframe. If you're looking for hardware, software or services to get the most from your mainframe, this is the guide for you.

The company showcases provide a snapshot of each participant's core business, contact information and a listing of the products and information available for a closer look online. In addition, you can see which social media channels the company uses.

But the print and digital versions of the buyer's guide are just the beginning. The experience continues online. Find the custom URL at the bottom of each showcase, which will take you to the company's online buyer's guide page. There you can find even more information about the company and its products, and direct links to online resources such as whitepapers, webinars, videos and social media channels.

While there, take advantage of the online guide's search features. You can search by operating system, keyword or alphabetically by company name for a quick and easy way to find just the right product or service for your mainframe.

And while you're searching the print buyer's guide, read up on what *IBM Systems Magazine*, *Mainframe edition* case studies, social media, Mainframe EXTRA eNewsletter and videos have to offer.

We're proud to offer you the 2013 Mainframe Buyer's Guide and hope you take full advantage of it!

### Company Showcase

**Sirius'** team of IBM System z<sup>®</sup> engineers, software specialists and consultants is dedicated to providing the services that clients need to modernize their systems and optimize the performance of existing workloads. Our team has successfully implemented System z solutions for over 400 clients, and our expertise spans traditional System z (zOS<sup>®</sup>, zManager<sup>®</sup>, z/VM<sup>®</sup>, z/VSE<sup>™</sup>), High Availability (GDPS<sup>®</sup>, WLM Security) and the complete middleware stack. Sirius specializes in new workloads (Linux<sup>®</sup> on z, and BI/BA including IDAA, Cognos<sup>®</sup>), and modernization solutions including SOA-based offerings and cloud on z. Let Sirius provide the expertise you need to get the most out of an existing system, or to implement a new one.



**Products Available to View Online:**  
Linux on System z Implementation Services  
Sirius System z Security Services  
Sirius zBuild Assist Implementation Services for z/OS

**Sirius Computer Solutions**  
613 N.W. Loop 410, Suite 1000  
San Antonio, TX 78216  
1-800-460-1237  
info@siriuscom.com  
www.siriuscom.com/GoSystemsIBM

Facebook, Twitter, LinkedIn icons

Find it all at [ibmsystemsmag.com/buyersguide/sirius](http://ibmsystemsmag.com/buyersguide/sirius)



**Syncsort** has been a leading global provider of high-performance mainframe sort technology for more than four decades, saving customers nearly \$220 million each year over inefficient competitive sort solutions<sup>1</sup>. Syncsort's solutions are fast and resource efficient mainframe data-sort technologies that help drive ROI with a unique combination of high-performance, optimal hardware utilization and ease of use.

<sup>1</sup>2,000 customers, 7M MIPS with DFSort, 2% Sort, 35% reduction with \$4,500 per MP cost = \$220 million in savings

**Products Available to View Online:**  
Syncsort MFX  
Syncsort PROC MFX  
Syncsort PipeSort

**Syncsort Inc.**  
50 Tice Blvd.  
Woodcliff Lake, NJ 07677  
Kathy Krobot  
(201) 930-8214  
kkrobot@syncsort.com  
www.syncsort.com/golbmsystemsmag

Facebook, Twitter, LinkedIn icons

Find it all at [ibmsystemsmag.com/buyersguide/syncsort](http://ibmsystemsmag.com/buyersguide/syncsort)



**SysperTec's VIRTEL** is a Web-enabling product line for mainframe applications (CICS<sup>®</sup>, IMS<sup>®</sup>, TSO<sup>®</sup>, etc.):

- Replaces TN/3270 with TCP/IP connections
- Replaces 3270 screens with user-friendly GUIs
- Exposes mainframe transactions and data as reusable Web services to Web applications and vice versa

VIRTEL's thin-client architecture works instantly with any Web-enabled device regardless of browser, OS or platform. It is critical to organizations that plan to:

- Use mobile devices and Apple products as Web-access devices
- Implement BYOD or desktop-virtualization initiatives
- Integrate mainframe applications and data to the cloud
- Extend selected mainframe transactions to untrained clients, partners and new staff

**Products Available to View Online:**  
VIRTEL Web Access  
VIRTEL Web Modernization  
VIRTEL Web Integration

**SysperTec**  
406 Kinross Drive  
Wainut Creek, CA 94598  
Patrick Fournier  
(925) 954-9649  
patrick.fournier@syspertec.us  
www.virtelweb.com

Find it all at [ibmsystemsmag.com/buyersguide/syspertec](http://ibmsystemsmag.com/buyersguide/syspertec)



Since 1982, **Treehouse Software** has been serving enterprises worldwide with industry-leading software products and outstanding technical support. Today, Treehouse is a global leader in providing data migration, replication and integration solutions for the most complex and demanding heterogeneous environments, as well as feature-rich, accelerated-ROI offerings for information delivery, business intelligence and analytics and application modernization. Treehouse Software customers are able to:

- REPLICATE Data Anywhere
- INTEGRATE Data Everywhere
- MODERNIZE Data from Legacy Applications
- ANALYZE Data for Business Advantage

**Products Available to View Online:**  
tcACCESS  
tcVISION  
DataNova

**Treehouse Software**  
2605 Nicholson Road, Suite 230  
Sevickley, PA 15143  
Wayne Lashley  
(724) 759-7070  
sales@treehouse.com  
www.treehouse.com

Facebook, LinkedIn icons

Find it all at [ibmsystemsmag.com/buyersguide/treehouse](http://ibmsystemsmag.com/buyersguide/treehouse)

32 2013 ibmsystemsmag.com/buyersguide

## Looking for more information on mainframe products?

Find it all at [ibmsystemsmag.com/buyersguide](http://ibmsystemsmag.com/buyersguide)



**IBM Systems**  
m a g a z i n e

220 S. 6th St., Suite 500, Minneapolis, MN 55402 (612) 339-7571

**EXECUTIVE PUBLISHER**

Diane Rowell  
(drowell@us.ibm.com)

**PUBLISHER**

Doug Rock

**EXECUTIVE EDITOR**

Evelyn Hoover

**MANAGING EDITOR**

Mike Westholder

**ART DIRECTOR**

David Sather

**PRODUCTION MANAGER**

Jonathan Benson

**PROJECT MANAGER**

Jessie Conley

**ASSOCIATE TECHNICAL PRODUCER**

David Waters

**CIRCULATION MANAGER**

Linda Holm

**ASSOCIATE PUBLISHER**

Mari Adamson-Bray  
(612) 336-9241  
(mbray@msptechmedia.com)

**ACCOUNT EXECUTIVE,  
NORTHEAST, NORTHWEST & CANADA**

Kathy Ingulsrud  
(612) 313-1785  
(kingulsrud@msptechmedia.com)

**ACCOUNT EXECUTIVE,  
MIDWEST & EUROPE**

Darryl Rowell  
(612) 313-1781  
(drowell@msptechmedia.com)

**ASSISTANT SALES MANAGER—  
ACCOUNT EXECUTIVE, SOUTHEAST,  
SOUTHWEST & AUSTRALIA**

Lisa Kilwein  
(623) 234-8014  
(lkilwein@msptechmedia.com)

**SALES AND MARKETING  
DEVELOPMENT MANAGER**

Elizabeth Sutliff

© Copyright 2012 by International Business Machines (IBM) Corporation. This magazine could contain technical inaccuracies or typographical errors. Also, illustrations contained herein may show prototype equipment. Your system configuration may differ slightly. This magazine contains small programs that are furnished by IBM as simple examples to provide an illustration. These examples have not been thoroughly tested under all conditions. IBM, therefore, cannot guarantee or imply reliability, serviceability, or function of these programs. All programs contained herein are provided to you "AS IS." IMPLIED WARRANTIES OF MERCHANTABILITY, NON-INFRINGEMENT AND FITNESS FOR A PARTICULAR PURPOSE ARE EXPRESSLY DISCLAIMED. All rights reserved.

All customer examples cited represent the results achieved by some customers who used IBM products. Actual environmental costs and performance characteristics will vary depending on individual customer configurations and conditions. Information concerning non-IBM products was obtained from the products' suppliers. Questions on their capabilities should be addressed with the suppliers.

All statements regarding IBM's future direction and intent are subject to change or withdrawal without notice and represent goals and objectives only. The articles in this magazine represent the views of the authors and are not necessarily those of IBM.

The following are trademarks (marked with an \*) of the International Business Machines Corporation in the United States and/or other countries.

DB2	System Storage	Tivoli	WebSphere
IBM	System z	TotalStorage	z/OS
IBM logo	System z9	VM/ESA	z/VM
MVS	System z10	VSE/ESA	

A complete list of IBM Trademarks is available online ([www.ibm.com/legal/copytrade.shtml](http://www.ibm.com/legal/copytrade.shtml)).

The following (marked with an \*) are trademarks or registered trademarks of other companies: Intel, Itanium and Pentium are trademarks or registered trademarks of Intel Corporation or its subsidiaries in the United States and other countries. Java and all Java-based trademarks and logos are trademarks or registered trademarks of Oracle and/or its affiliates. Linear Tape-Open, LTO and Ultrium are trademarks of HP, IBM Corp. and Quantum in the U.S. and other countries. Linux is a registered trademark of Linus Torvalds in the United States, other countries, or both. Microsoft, Windows and Windows NT are trademarks of Microsoft Corporation in the United States, other countries, or both. UNIX is a registered trademark of The Open Group in the United States and other countries. Other product and service names might be trademarks of IBM or other companies.

Reprints: To order reprints, contact Kelly Carver (612) 336-9280.

IBM Systems Magazine, Mainframe edition (ISSN# 1544-8819) is published bimonthly by MSP Tech-Media, 220 South Sixth St., Suite 500, Minneapolis, MN 55402. Publications Agreement No. 40063731, Canadian Return Address, Pitney Bowes, Station A, PO Box 54, Windsor, Ontario Canada N9A 6J5

Printed in the U.S.A.

# Make Migrations Easy

## What Issues In Your Load Modules Will Delay Your Migration to:

- z/OS V1.13
- XL C/C++ provided in z/OS 1.13
- Enterprise PL/I V4.2
- Enterprise COBOL V4.2
- The latest versions of DB2 and CICS

## Make Migration Less Traumatic With Edge Portfolio Analyzer v1.7.3

Whenever you migrate to a new environment, you must know the status of all the load modules in your applications. Unless you are sure of what your current portfolio contains, unexpected problems will pop up, adding time and expense to your migration project.

The Edge Portfolio Analyzer equips you to prepare for these migrations by giving you a clear picture of your application inventory ... so you can identify potential problems before they can disrupt your project.

**Get Your FREE  
General Information Manual**

Go to [www.edge-information.com](http://www.edge-information.com)  
or Call 847-297-2020





Less complexity.  
Less setup.

**MORE INNOVATION.**

Mainframe  
Solutions

- Abend-AID
- File-AID
- Hiperstation
- Strobe
- Xpediter

Compuware  
APM

Covisint®

Changepoint®

Uniface®

Professional  
Services

Compuware Mainframe Solutions are intuitive, powerful and delivered through a modernized environment to help you minimize distractions while you develop, test, debug and tune your applications. So you can unleash your innovative potential.

This is the future of your mainframe.

Learn more at: [compuware.com/mainframe](http://compuware.com/mainframe)





**IBM Systems**  
magazine

# Company Showcases

Z/OS

SYSTEMS  
MANAGEMENT

DATABASE

MVS

HIGH AVAILABILITY

APPLICATION  
DEVELOPMENT

LINUX

**21st Century Software** has been an industry leader for decades, with solutions that ensure IT Resiliency. Our IT Resiliency Management allows corporate executives to sleep at night. They know they're prepared to meet the operational recovery, DR and business SLAs on which their organizations depend. With our recent acquisition, expansion into the mainframe storage arena has been an evolution that takes advantage of expertise that took decades to develop. With the incorporation of DR/VFI 4.4, SpaceFinder Storage Management Solutions and Tape/Assist, we now have the ability to provide storage professionals with solutions to enhance current processes and provide insight that they simply don't have today.



**Products Available to View Online:**

- DR/VFI
- Tape/Assist
- Recoverability
- Assessment Service
- SpaceFinder Storage Management Solutions

**21st Century Software Inc.**  
940 West Valley Rd., Suite 1604  
Wayne, PA 19087  
Rebecca Levesque  
1-800-555-6845  
sales@21stcenturysoftware.com  
www.21stcenturysoftware.com

Find it all at [ibmsystemsmag.com/buyersguide/21stcentury](http://ibmsystemsmag.com/buyersguide/21stcentury)



## Congratulations to the Champion!

... a passionate evangelist for the Mainframe platform.

We want to congratulate Troy Coleman for being selected to the prestigious IBM Champions list. This deserving individual authors weekly blogs on our IBM Systems Magazine website titled DB2utor and is an IBM Systems Magazine technical editor.

For a complete list of 2011 Champions and their profiles visit: <http://www.ibmcom/developerworks/champion/>

**Troy Coleman's blog:** <http://ibmsystemsmag.blogs.com/db2utor/>

# Action Software International

A pioneer in actively tracking and managing change in the MVS systems environment, **Action Software** works alongside some of the world's largest institutions' critical processes.

With 30-plus years of z/OS\* and UNIX\* System Services (USS) management experience, Action's innovations offer proactive tools to enhance system availability, cost efficiency, audit controls and security.

Business managers and IT leaders look for proactive z/OS systems-management tools that can address IT governance risks while automating and tracking software-management processes.

Action's flagship product, eventACTION, was the first mainframe software-management tool to provide these specialized functions:

- Real-time change management in z/OS
- Protect critical system data with enhanced security
- Reduce outages and improve availability
- Track all changes, references or execution to any system-level data
- Interface with existing systems/software/processes
- Provide strong audit trail

ussACTION delivers the same superior functionality as eventACTION for the z/OS USS system environment.

## Products Available to View Online:

### eventACTION

Proactively manage z/OS MVS with real-time capture of any change, reference or execution.

- Compliance issues in a z/OS system environment

### ussACTION

Automatically and transparently track and control changes in z/OS UNIX Systems Services

- Automatically and transparently track and control changes in z/OS UNIX Systems Services

*Proactively  
Manage  
Your z/OS  
Environment*

*See why more than 300 global clients for 30-plus years depend on Action Software International.*

*Outstanding systems management software for real-time capture of any change, reference or execution to any system-level data.*



**Find it all at [ibmsystemsmag.com/buyersguide/actionsoftware](http://ibmsystemsmag.com/buyersguide/actionsoftware)**



**Action Software International**  
20 Valleywood Drive, Suite 107  
Markham, Ontario, L3R 6G1  
Peter Sharma  
(905) 470-7113  
sales@actionsoftware.com  
www.actionsoftware.com





**Acxiom** is a recognized leader in IT Outsourcing managed services that enables technology executives to reduce the complexity of their environments as well as their risk while providing greater flexibility to better serve business demands. We pride ourselves on delivering high-touch superior service and are uniquely positioned to manage highly complex, processing-intensive environments—from mainframe to server to cloud. Acxiom has a 40-plus-year heritage in data management and technology. We are ranked by analysts among the top three providers of mainframe outsourcing and No. 1 in customer satisfaction for IT outsourcing by the Black Book of Outsourcing. Visit [www.acxiomit.com](http://www.acxiomit.com) or call 1-888-3-ACXIOM.

**Products Available to View Online:**

- Managed Mainframe Services
- Cloud Services
- Managed Server Services

**Acxiom**  
 1501 Opus Place  
 Downers Grove, IL 60515  
 Jeff Shoup  
 (630) 944-5093  
[Jeffrey.Shoup@acxiom.com](mailto:Jeffrey.Shoup@acxiom.com)  
[www.acxiomit.com](http://www.acxiomit.com)



Find it all at [ibmsystemsmag.com/buyersguide/acxiom](http://ibmsystemsmag.com/buyersguide/acxiom)



Providing solutions for data transfer and data security in the z/OS\* environment is our mission. The integrity and security of the data is critical, whether data is stored on the network, during the file-transfer process or off site. We provide solutions that include user-friendly tools for fast TCP/IP file transfer and data encryption using AES 128 encryption, DES, Triple DES and DESX.

**Products Available to View Online:**

- Data Encryption Facility (DEF)
- SSR Client/Server
- TSO Superset Utilites

**Applied Software Inc.**  
 P.O. Box 566  
 New Hope, PA 18938  
 Ron Turner  
 (215) 297-9441  
[ron@appliedsoftware.com](mailto:ron@appliedsoftware.com)  
[www.appliedsoftware.com](http://www.appliedsoftware.com)



Find it all at [ibmsystemsmag.com/buyersguide/appliedsoftware](http://ibmsystemsmag.com/buyersguide/appliedsoftware)

## Mainframe Best Practices in Action

While IBM Systems Magazine, Mainframe Edition, relies on top IBM and industry experts to keep readers in step with the latest mainframe advancements, it also features customers leveraging their mainframes to the fullest. Here are a few examples:



**“The recovery time is unbelievable. Before, if someone needed data, we’d have to find out what tape it was on, find that tape and then mount it. That might have taken 44 hours. Now, we can do it on the fly, with restore requests coming in at around 15 minutes.”** — Lacey Griffith, Furniture Brands

[www.ibmsystemsmag.com/mainframe/casestudies/manufacturing/furniture\\_brands/](http://www.ibmsystemsmag.com/mainframe/casestudies/manufacturing/furniture_brands/)



**“At Primerica, the mainframe is the file server for all legacy, intranet and Internet applications. This is not only because the mainframe is easier to recover in the event of an emergency, but also because we don’t want to have to restore some 400-plus servers individually if something were to happen.”** — Abel Melchiorre, Primerica

[www.ibmsystemsmag.com/mainframe/casestudies/banking-finance/Primerica\\_z196/](http://www.ibmsystemsmag.com/mainframe/casestudies/banking-finance/Primerica_z196/)

# ASG Software Solutions

**ASG** enables clients with both mainframe and distributed environments to mobilize their resources, boost productivity, and enhance performance through the intelligent use of technology. A recognized innovator in enterprise IT software solutions, ASG Software Solutions has been optimizing 85 percent of the world's most complex IT organizations for over 25 years. We create and deploy unique software solutions that reduce cost, mitigate risk and improve service delivery throughout the IT lifecycle. ASG's comprehensive solutions help you solve today's challenges, such as cloud computing and big data, while driving your business forward by providing insight and control across cloud, distributed and mainframe environments. Founded in 1986, ASG is a privately held global company based in Naples, Fla., with more than 70 offices worldwide.

## Products Available to View Online:

### ASG-EAMS (Enterprise Automation Management Suite)

ASG's EAMS solutions offer a practical approach to managing complexity in today's IT environments.

➤ **Executive Dashboards:** *Optimizing IT Services to Empower Your Business* whitepaper by EMA

### Performance and Availability Management (ASG-TMON Suite)

ASG-TMON products monitor the health, availability and performance of z/OS systems and subsystems.

➤ *View all ASG-TMON datasheets, whitepapers and webcasts*

### Capacity Utilization, Planning, and Modeling (ASG-PERFMAN Suite)

ASG-PERFMAN provides an end-to-end view of your entire IT infrastructure capacity and utilization.

➤ *View all ASG-PERFMAN datasheets, whitepapers and webcasts*

### Workload Scheduling and Automation Suite

Workload scheduling and automation ensures workloads execute on time to meet business objectives.

➤ *View all workload scheduling and automation datasheets, whitepapers and webcasts*

### JCL Management Suite

Comprehensive production JCL management for analyzing JCL and enforcing JCL standards and syntax

➤ *View all JCL management datasheets, whitepapers and webcasts*

### Mainframe Application Performance Management (ASG-TriTune Suite)

ASG-TriTune pinpoints application execution delays and presents an in-depth performance profile.

➤ *View all ASG's mainframe application performance datasheets, whitepapers and webcasts*

**ASG partners with 85 percent of the world's largest companies to optimize IT service delivery**



**AWARD!**

ASG Software Solutions inducted into **KMWorld's 2012 Hall of Distinction**

Are you achieving your business availability goals? Learn more about ASG's open-architected Enterprise Automation Management Suite (EAMS) for simplifying management of your IT environment, leveraging our market-leading ASG-TMON for performance and availability and ASG-PERFMAN for capacity planning.

Visit us at [www.asg.com](http://www.asg.com)

**ASG**<sup>®</sup>  
Software Solutions

Find it all at [ibmsystemsmag.com/buyersguide/asgsoftware](http://ibmsystemsmag.com/buyersguide/asgsoftware)



### ASG Software Solutions

1333 N. Third Ave.  
Naples, FL 34102  
1-800-932-5536  
[responses@asg.com](mailto:responses@asg.com)  
[www.asg.com](http://www.asg.com)





Since 1986, **Advanced Software Products Group Inc.** has provided the IT community with cutting-edge software solutions, support and services. With a worldwide network of support, including an active role as an IBM PartnerWorld\* Partner in Development and Microsoft\* Certified Partner, ASPG remains a leader in the optimization of data center performance. ASPG offers a wide range of innovative software solutions for data security, storage administration, capacity planning, system management, application programming and CICS\* productivity. ASPG is proud to serve a majority of Global 1000 data centers, which have selected our software solutions to increase productivity, protect data and solve critical issues.

**Products Available to View Online:**

MegaCryption  
ReACT  
ERQ - Easy RACF Query  
MegaCryption DB

**Advanced Software Products Group Inc.**

3185 Horseshoe Drive S.  
Naples, FL 34104-6138  
(239) 649-1548  
toll free 1-800-662-6090  
aspgsales@aspg.com  
www.aspg.com



Find it all at [ibmsystemsmag.com/buyersguide/aspg](http://ibmsystemsmag.com/buyersguide/aspg)

## IBM Destination z

Your home for all things mainframe, Destinationz.org offers articles, blogs, forums, video and more. With more than 2,500 members already, the site appeals to every mainframer—from the longtime IT professional to the student embarking on a System z career. Join today!

[Destinationz.org/join](http://Destinationz.org/join)



## Well-informed technology business decisions begin with the IBM Systems Magazine Buyer's Guide.

*We've done your due diligence here.*

**SEARCH** solution providers that integrate with IBM Systems

**DISCOVER** the latest products, services and education

**ACCESS** new white papers, case studies, videos, and downloads



[www.ibmsystemsmag.com/buyersguide](http://www.ibmsystemsmag.com/buyersguide)

Connect the dots - fill IT skills gap to stay ahead in this smarter computing era. IBM® Systems Training has new and updated curricula to help you get the most out of your IT investments.

**ibm.com**/systems/training/sysmag

IBM PureSystems™

IBM Power Systems™

IBM System Storage®

IBM System x®

IBM System z®

Cloud Computing

and more . . .

[twitter.com/ibmtraining](https://twitter.com/ibmtraining) • [facebook.com/ibmtraining](https://facebook.com/ibmtraining) • [linkd.in/IBMTrainingNetwork](https://linkd.in/IBMTrainingNetwork)

IBM, the IBM logo, ibm.com, Power Systems, PureSystems, System Storage, System x, and System z are trademarks or registered trademarks of International Business Machines Corporation in the United States, other countries, or both. A current list of IBM trademarks is available on the Web at "Copyright and trademark information" at: [ibm.com/legal/copytrade.shtml](http://ibm.com/legal/copytrade.shtml).





# BMC Software

Business runs on IT. IT runs on **BMC Software**.

Business runs better when IT runs at its best. That's why more than 20,000 IT organizations—from the Global 100 to the smallest businesses—in more than 120 countries rely on BMC Software to manage their business services and applications across distributed, mainframe, virtual and cloud environments. With the leading

business service management (BSM) platform, cloud management and the industry's broadest choice of IT management solutions, BMC helps customers cut costs, reduce risk and achieve business objectives. For the four fiscal quarters ended March 31, 2012, BMC revenue was approximately \$2.2 billion. Visit [www.bmc.com](http://www.bmc.com) for more information.

## Products Available to View Online:

### **BMC MainView for z/OS**

The industry's most CPU-efficient monitoring and management solution.

- *Optimize your mainframe resources*

### **BMC APPLICATION RESTART CONTROL**

Automate restart processing of batch jobs. Implement application checkpoints with no code changes.

- *Restart without starting over*

### **BMC MAXM Database Advisor for IMS**

Automate IMS database maintenance via Web-based interface.

- *Proactively manage IMS maintenance*

### **BMC Backup and Recovery Solution for IMS**

Makes backup and recovery of IMS databases faster, more reliable.

### **BMC Database Administration for DB2**

Change and/or migrate DB2 data structures faster, more accurately and reliably.

### **BMC Database Performance for DB2**

Automate DB2 reorganizations. Improve performance and availability.

### **BMC Recovery Management for DB2**

Makes backup and recovery of DB2 faster, more reliable. DB2 log analysis and audit capability.

### **Systems Performance for DB2**

Monitor and optimize DB2 system and buffer pool performance.

### **BMC CHANGE MANAGER for DB2**

Most reliable and fastest process for making changes to DB2.

- *Manage DB2 schema changes like a genius*

### **BMC SQL Performance for DB2**

Identify and resolve SQL performance problems quickly and efficiently.

- *Tune SQL like a genius*

### **BMC CATALOG MANAGER for DB2**

Simplify ad hoc DB2 catalog management.

- *Use the DB2 catalog like a genius*

### **BMC MainView for Linux-Servers**

Manage performance and availability of z/Linux and z/VM business applications.

- *Manage performance and availability of z/Linux and z/VM business applications*

### **BMC MainView AutoOPERATOR**

Simplify automation using panel-driven, REXX-free automation.

- *Avoid costly outages*

### **BMC MainView Batch Optimizer**

Cost-effective batch optimization without manual JCL changes.

- *Cost-effective batch optimization without manual JCL changes.*

### **BMC Capacity Management for Mainframes**

Predict future service levels for mainframe applications.

- *Predict future service levels for mainframe applications*

BMC's portfolio of BSM solutions delivers a comprehensive approach and unified platform for managing IT. BMC offers solutions across your entire IT organization—mainframe to distributed systems, physical to virtual, operations to support. And BMC Consulting can advance your BSM initiative or implement any of our solutions with the necessary expertise.

**BMC MainView SRM Reporting**

Lower costs and avoid waste by correcting z/OS storage errors.

- *Reclaim unused and wasted storage*

**BMC Application Transaction Tracing**

Monitor transactions to ensure service-level adherence.

- *Monitor transactions across your enterprise*

**BMC Middleware Monitoring**

Ensure middleware health and availability.

- *Avoid costly middleware outages*

**BMC Middleware Administration**

Secure, self-service middleware administration.

- *Secure, self-service middleware administration*

**BMC Control-M Workload Automation**

BMC Control-M automates the scheduling and management of all scheduled work in the data center.

- *Start automating workloads*

**Optimize your mainframe systems with BMC. Reduce costs. Boost service delivery.**

2 With BMC solutions for mainframe cost optimization, you can:

- Reduce MIPS consumption
- Ensure business availability
- Optimize application performance
- Manage systems and applications across the enterprise

Learn more at [www.bmc.com/mco](http://www.bmc.com/mco)



Find it all at [ibmsystemsmag.com/buyersguide/BMC-Software](http://ibmsystemsmag.com/buyersguide/BMC-Software)



**BMC Software**

2101 City West Blvd.  
Houston, TX 77042  
Americas: 1-877-945-6325  
EMEA: 00800 44444 262  
Asia Pacific: +61 3 96574443  
[www.bmc.com](http://www.bmc.com)

# CA Technologies

**CA Technologies** is an IT management software and solutions company with expertise across all IT environments—from mainframe and distributed, to virtual and cloud. Our products manage and secure IT environments and enable customers to deliver more flexible IT services. We offer innovative products and services that provide the insight and control essential for IT organizations and foundational elements to make the promise of flexible IT and agile business a reality. With more than 30 years of experience in IT management, our deep expertise in diverse and complex environments enables us to solve the toughest IT management challenges. We collaborate with our customers to help them grow their businesses, offer new services, become more competitive and achieve the business goals they have set. Relied on by the majority of the Global Fortune 500 to manage their evolving IT ecosystems, CA Technologies makes business agility possible.

## Products Available to View Online:

### CA Datacom and CA IDMS databases for mainframe

Manage databases for mainframes more effectively

➤ **Whitepaper:** *Leveraging Mainframe Specialty Engines - zIIP, zAAP and IFL*

### Workload Automation for Mainframe-Hosted Implementations

Workload automation for mainframe-hosted implementations: streamline, simplify and save

➤ **Tech Brief:** *Automating IT Workloads to Accelerate the Delivery of a Business Driven Infrastructure*

### Database Performance Management for mainframe

Database performance management for mainframe: maximize database performance

➤ *Transcending Database Management Conversion Fears with a Proven Methodology*

### Network Management for Mainframe

CA Technologies help you satisfy service goals with CA NetMaster Network Management for TCP/IP

➤ **Product Sheet:** *CA NetMaster Network Management for TCP/IP*

### PCI Compliance for Mainframe

CA Technologies helps you comply with PCI data security standards with sound security controls

➤ **Whitepaper:** *CA Security Management and PCI Compliance*

### Resource Management for Mainframe

Gain visibility and meet service levels with resource management software

➤ **Technology Brief:** *Forecasting the Future: Capacity Planning Best Practices Using CA MICS Resource Management*

## Modernizing and optimizing the mainframe.

With next-generation mainframe management from CA Technologies.

Transform your IT through mainframe modernization and optimization so you can contain costs, build necessary skill sets and develop best practices that increase agility to meet your critical business needs.

+ Learn more at [ca.com/mainframe](http://ca.com/mainframe)

agility  
made possible



Copyright © 2012 CA. All rights reserved.

Find it all at [ibmsystemsmag.com/buyersguide/ca](http://ibmsystemsmag.com/buyersguide/ca)



### CA Technologies Inc.

One CA Plaza  
Islandia, NY 11749  
1-800-225-5224  
[ca.com](http://ca.com)



# Compuware

As a market leader in providing mainframe application lifecycle-management solutions, **Compuware** has supported the world's largest IT organizations for more than 30 years. Compuware delivers the innovation, scalability, reliability and flexibility needed to ensure your mission-critical business applications are performing as needed. When Compuware mainframe solutions first hit IT rooms around the globe, developer productivity was unleashed like never before. This value remains inherent to your Compuware investment. Put simply: Compuware enables IT organizations to focus their efforts on delivering new services to the business, instead of locating and fixing problems within IT. Compuware's focus on operational cost reduction provides customers with the means to reduce their most expensive IT investments—people and hardware—while also enjoying the reliability of the industry's most trusted mainframe application-development tools and the security of knowing your application-testing environments are protected from unnecessary data breaches while remaining efficient.

## Products Available to View Online:

### Developer Productivity

Workbench is Compuware's modernized open development environment solution.

➤ **Compuware Mainframe Solutions Brochure: Maximize Productivity, Minimize Costs**

### Test Data Optimization

Compuware's Test Data Optimization solution helps protect businesses from costly data breaches.

➤ **Disguise Test Data and Gain Developer Productivity 2-Minute Explainer**

### Application Performance Management

Compuware's Application Performance Management solution proactively controls IT costs.

➤ **Mainframe Application Performance Management 2-Minute Explainer**

**Do More.  
Save More.  
Deliver More.**

Abend-AID

File-AID

Hiperstation

Strobe

Xpediter

Workbench



Find it all at [ibmsystemsmag.com/buyersguide/compuware](http://ibmsystemsmag.com/buyersguide/compuware)



### Compuware Corp.

1 Campus Martius  
Detroit, MI 48226  
Mary McCarthy  
(313) 227-8188  
[mary.mccarthy@compuware.com](mailto:mary.mccarthy@compuware.com)  
[www.compuware.com/mainframe](http://www.compuware.com/mainframe)

# CSI International

**CSI International** is an ISV providing software and consulting solutions to customers using IBM's z/OS\* operating system and related products.

CSI provides software solutions and services directly to customers in North America. Customers outside of North America are serviced through CSI distributors and select CSI business partners. CSI corporate headquarters are located in Williamsport, Ohio, with additional facilities for research and development, sales, and technical support in Ohio, Minnesota, Colorado, California, Tennessee, Florida and Israel.

CSI International's software and engineering talent has enabled CSI to expand its reach into new technologies while maintaining its strong foundation in IBM mainframe software. The company provides z/OS solutions addressing systems management, data management, file management and reporting.

CSI International continues to further develop, market, support and introduce new industry-leading solutions that enhance and extend the mainframe experience while reducing the overall cost of IT. The mission of CSI International is to "Help Customers Succeed." Putting our customers first will always be the driving force behind everything we do.

## Products Available to View Online:

### VShare

VSAM file-sharing system for concurrent CICS and batch access.

➤ **Whitepaper:** *Expanding the Ever-Shrinking Batch Window*

### VSUM

VSAM file design and analysis tool.

➤ **Whitepaper:** *VSAM Relevancy—What You May Not Know or May Have Forgotten*

### DataMiner

Comprehensive information and data-management system.

➤ **Whitepaper:** *Turning Raw Data into Useable Information*

### EzEDIT

Powerful and flexible cross-platform source program editor.

➤ **Whitepaper:** *Overlooking the "Source" of Potential Disruptions in Your IT Environment*

### DataMover

Automated workstation-to-host file-transfer system.

➤ **Interactive Survey:** *Test Your Knowledge: Are you Shipping and Receiving Mainframe Data Safely?*

### FileMarvel

Database and file viewer/editor.

➤ **Whitepaper:** *The Realities of Cost-Effective File Management*

## CSI International "Delivering what the competition can only promise"

Proven excellence and commitment to quality mainframe software since 1978. Direct access to experts with our 24-7 technical support. CSI provides software and services directly to customers in North America. Customers outside of North America are serviced through CSI distributors and partners.



Find it all at [ibmsystemsmag.com/buyersguide/csi](http://ibmsystemsmag.com/buyersguide/csi)



**CSI International**  
8120 State Route 138  
Williamsport, OH 43164  
sales@CSI-International.com  
1-800-795-4914  
www.CSI-International.com

## Mainframe EXTRA

Can't get enough of *IBM Systems Magazine's* award-winning articles and features? Beyond the print issues, keep apprised of weekly online updates—blogs, articles, videos and events—on [ibmsystemsmag.com](http://ibmsystemsmag.com) through the **Mainframe EXTRA eNewsletter**, delivered to your inbox twice a month. Subscribe now for free!

<http://www.ibm.com/systemsmag/forms/mainframe-sign-up/>



Since its inception in 1980, **Data 21's** mission has been to deliver innovative IBM mainframe-centric computing solutions that empower businesses and enrich end users in the workplace. Data 21 solutions are highly valued strategic components at hundreds of top corporations around the world. With the Internet Age upon us, Data 21 is focusing on addressing Internet-related technologies for the secure, efficient, flexible delivery of information over IP.

### Product Available to View Online:

InterSession  
ZIP/390  
ZIP/VSE

### Data 21 Inc.

3820 Del Amo Blvd., Suite 302  
Torrance, CA 90503  
Pam Carver-Vigil  
(310) 921-9200  
[sales@data21.com](mailto:sales@data21.com)  
[www.data21.com](http://www.data21.com)



Find it all at [ibmsystemsmag.com/buyersguide/data21](http://ibmsystemsmag.com/buyersguide/data21)



**Direct Computer Resources'** DataVantage software allows you to create, view, edit, manage and mask your data efficiently and affordably. Using production data containing personally identifiable information (PII) for nonproduction purposes is risky and noncompliant with legislative mandates. DataVantage software tools enable the creation of PII-protected datasets via automated, repeatable processes in z/OS\* environments. DCR has 30-plus years of enterprise-class data-management experience: Contact us to join hundreds of Fortune 500 companies who depend on DataVantage software's data management and information protection. DCR works closely with international industry standards groups on diverse issues, including financial and health security.

### Products Available to View Online:

DataVantage for DB2  
DataVantage for IMS  
DataVantage for VSAM

**Direct Computer Resources Inc.**  
120 Birch Road  
Franklin Lakes, NJ 07417  
Bill Vitiello  
1-877-704-0077 or  
(631) 673-0077  
[wvitiello@DataVantage.com](mailto:wvitiello@DataVantage.com)  
[www.DataVantage.com](http://www.DataVantage.com)

Find it all at [ibmsystemsmag.com/buyersguide/datavantage](http://ibmsystemsmag.com/buyersguide/datavantage)



**DINO** was founded in 2002 and develops enterprise-wide, multiplatform solutions to optimize complex IT environments. Known primarily for its specialist capabilities in the z/OS\* mainframe including VSAM record management catalog, storage management and disaster recovery, DINO technologists have authored more than 24 products worth hundreds of millions of dollars in revenue. More than 80 percent of Fortune 500 companies rely on this same technology to meet their needs every single day.

### Product Available to View Online:

T-REX  
Veloci-Raptor  
RTD

### DINO Software Corporation

P.O. Box 7105  
Alexandria, VA 22307  
Rosalie Buck  
(703) 768-2610  
[sales@dino-software.com](mailto:sales@dino-software.com)  
[www.dino-software.com](http://www.dino-software.com)



Find it all at [ibmsystemsmag.com/buyersguide/dino](http://ibmsystemsmag.com/buyersguide/dino)



# DTS Software

For more than 20 years, **DTS Software** has provided leading-edge products in the areas of storage management, system monitoring and automation for large-scale IBM environments. From the original industry-standard Space Recovery System (SRS), used by hundreds of data centers to help eliminate storage-related production failures, to the new DLm Control Center (DCC), DTS products are noted for their sophistication, reliability and ease of use.

In today's high-visibility, round-the-clock-availability world, it is more important than ever to take advantage of software tools to monitor and control every aspect of system operation. With personnel budgets increasingly constrained, many companies leverage their existing resources by employing automation products such as those produced by DTS to manage and monitor their systems.

DTS's focus is to help control and manage the environment in several important areas:

- Storage management
- Monitoring storage subsystems
- Automation

All of DTS's products incorporate a unique rules engine that provides a simple-yet-powerful mechanism for defining the policies that control product operation. Rules-engine processing helps ensure consistency across the product suite and helps eliminate manual intervention.

## Products Available to View Online:

### **EASY/Exit**

EASY/Exit simplifies the task of creating exit routines in z/OS and DFSMSHsm environments.

### **Monitor**

Monitor will check conditions in your DASD subsystem and respond/react as directed.

### **Space Recovery System (SRS)**

SRS dynamically recovers disk-space allocation failures and eliminates related errors.

### **DCC - DLm Control Center**

MCC is a comprehensive software product

that facilitates the use of Bus-Tech's MDL (EMC's DLm).

### **JCL-QA**

JCL-QA performs JCL analysis, validation and reporting—effectively and inexpensively.

### **Explorer GUI**

Explorer provides a modern and robust facility allowing you to manage z/OSDASD storage using a GUI.

• Visit our *Resources Center* for webcasts, whitepapers and product literature

**DTS Software—  
still a worldwide  
leader in enterprise  
storage-management  
technology.**

Whether it's our third-generation technology in our current products (SRS, ACC, Monitor,) or in our new-est products (DCC – DLm Control Center and JCL-QA), we are proud to provide our customers with “best-in-class” storage-management solutions.

Visit us at [www.DTSsoftware.com](http://www.DTSsoftware.com).

**DTS**  
SOFTWARE, INC.

Find it all at [ibmsystemsmag.com/buyersguide/dts](http://ibmsystemsmag.com/buyersguide/dts)



### **DTS Software**

4350 Lassiter at North Hills Ave.,  
Suite 235  
Raleigh, NC 27609  
(919) 833-8426  
[info@DTSsoftware.com](mailto:info@DTSsoftware.com)  
[www.DTSsoftware.com](http://www.DTSsoftware.com)



Powering Business Worldwide

**Eaton Corp.** is a diversified power-management company with more than 100 years of experience providing energy-efficient solutions that help our customers effectively manage electrical, hydraulic and mechanical power. With 2011 sales of \$16 billion, Eaton is a global technology leader in electrical components and systems for power quality, distribution and control. For more than 20 years, Eaton has been working with IBM to design and develop custom UPS and PDU solutions to meet the stringent demands of IBM applications.

**Products Available to View Online:**

Eaton 9395 UPS

**Eaton Corp.**

8609 Six Forks Road  
Raleigh, NC 27615  
Mike Jackson  
1-800-925-4426  
IBMSupport@eaton.com  
www.eaton.com



Find it all at [ibmsystemsmag.com/buyersguide/eaton](http://ibmsystemsmag.com/buyersguide/eaton)



**GFS Software** develops solutions for the System z\* platform. Founded in 1988, GFS is a market leader for tape-library management, with a portfolio of essential and high-quality solutions, producing savings and increased efficiency. GFS drives the business of some of the largest installations in the financial, telecommunication and government sectors. GFS also distributes solutions from renowned companies worldwide and has subsidiaries in Europe and the United States.

**Products Available to View Online:**

GFS/AFM Advanced File Manager  
GFS/Stack Automatic Multi-file  
GFS/TQS Tape Quality System

**GFS Software Inc.**

14 E. 60th St., Suite 609  
New York, NY 10022  
Pedro Figueiroa  
(212) 659-2220  
pedro.figueiroa@gfssoftware.com  
www.gfssoftware.com



Find it all at [ibmsystemsmag.com/buyersguide/gfs](http://ibmsystemsmag.com/buyersguide/gfs)

# SHARE



Over the past five decades, SHARE has become synonymous with high-quality, user-driven education, peer networking and resources to make enterprise computing specialists more effective professionals. While independent, SHARE maintains a close partnership with IBM and its subsidiaries, as well as with leading solution providers to continually strengthen SHARE's benefits for its members.

**A sample of what SHARE has to offer:**



**Monthly webcasts** on top-of-mind IT topics presented by leading IT solution providers



**Active blog discussions** on industry trends and announcements at [PresidentsCorner.SHARE.org](http://PresidentsCorner.SHARE.org)



**SHARE Content Library**, including past conference proceedings, technology studies and more!

**Recent topics addressed by our community include** the IT skills shortage, Big Data analytics, IPv6, Mobility for the Enterprise and enterprise encryption.

**SHARE Research**

SHARE regularly studies key industry trends. Recent studies include the *Social Media and Business Intelligence Research Findings* and *Closing the IT Skills Gap*. Visit [SHARE.org/research](http://SHARE.org/research) to view these studies.

**2013 Events**

**SHARE in San Francisco**  
February 3–8, 2013 | Hilton San Francisco Union Square

**SHARE in Boston**  
August 11–16, 2013 | Hynes Convention Center

# IBM DESTINATION Z



YOUR ONE-STOP SHOP FOR ALL THINGS  
MAINFRAME

Learn

Connect

Collaborate

More than 2600 members  
and going strong!

Become a member today!

[www.destinationz.org](http://www.destinationz.org)





# GT Software

For 30 years, **GT Software** has helped organizations derive business benefit from their mainframe investments by delivering cost-effective mainframe solutions. GT Software continues to provide unparalleled capabilities that leverage your mainframe's proven functionality, power, stability and performance to its fullest potential.

Founded in 1982 with headquarters in Atlanta, Ga., GT Software is a privately held, global company that is currently represented in the U.S., Canada, Asia, Europe, Australia, Africa and South America. Ivory from GT Software is a suite of industry-leading mainframe-integration and data-access tools that improve operational responsiveness by simplifying and accelerating access to mainframe applications, data and processes. Ivory products enable access with no code written, generated or changed and no additional MIPS usage. Plus, Ivory requires minimal training and offers quick deployment. Ivory helps integrate all of your mainframe assets, regardless of underlying platforms, languages and data formats. Using Ivory, developers can seamlessly integrate the mainframe with new technologies like mobile and Web applications, packaged applications, business intelligence and cloud initiatives.

## Products Available to View Online:

### Ivory Service Architect

Ivory Service Architect accesses mainframe applications, data and processes through Web services.

➤ *Modernize Your Mainframe with Ivory*

### Ivory Data Access

Ivory Data Access allows you to quickly unlock information stored in mainframe data sources.

➤ *Achieving Mainframe Data Access Within the Cloud*

### Ivory VisualConnect

Ivory VisualConnect enables an intuitive, graphical front end onto 3270 and 5250 green screens.

➤ *Graphical Front End for 3270 Green Screens*

## It's Possible. Enterprise Modernization Made Easy.

GT Software offers a suite of industry-leading mainframe-integration, migration and data-access tools that improve operational responsiveness by simplifying and accelerating access to mainframe applications, data and processes.

Visit us at [ibmsystemsmag.com/buyersguide/GT-Software](http://ibmsystemsmag.com/buyersguide/GT-Software)



Find it all at [ibmsystemsmag.com/buyersguide/GT-Software](http://ibmsystemsmag.com/buyersguide/GT-Software)



### GT Software

6255 Barfield Road NE, Suite 200  
Atlanta, GA 30328  
Jonathan Reed  
(404) 253-1300  
[jreed@gtsoftware.com](mailto:jreed@gtsoftware.com)  
[www.gtsoftware.com](http://www.gtsoftware.com)

# INNOVATION Data Processing

Among the most experienced independent software providers in the world, **INNOVATION Data Processing** provides thousands of customers around the world with business-resiliency and privileged-information-protection solutions that combine innovative design with cross-platform access, deduplication and virtualization technology.

A single source for nondisruptive business continuance, enterprise data protection, high-performance storage-resource management and privacy-information protection for z/OS\* and Linux\* on System z\*, as well as for AIX\*, Linux, UNIX\* and Windows\* distributed storage, INNOVATION partners with CA, IBM, EMC, Hitachi, Microsoft,

## Products Available to View Online:

### FATSCOPY with FATSERASE

FATSCOPY...A leading tape migration, copy, stacking and VTL conversion utility.

➤ **Product Overview:** *FATSCOPY with FDRERASE*

### FDRERASE for z/OS and FDRERASE/OPEN

Fast, easy-to-use and government-certified secure disk erasure.

### IAM and IAM/AIX

IAM... Transparently improves batch, CICS and WebSphere VSAM application performance and efficiency.

➤ **Product Overview:** *IAM*

### FDR Plug and Swap (FDRPAS) for z/OS

FDRPAS w/FDRERASE... Fast, reliable and easy to use, nondisruptive z/OS disk-volume migration and erase.

➤ **Product Overview:** *FDRPAS*

### FDRMOVE with FDRPAS (Plug and Swap)

Easy-to-use, fast, reliable, low-impact z/OS disk-volume consolidation.

➤ **Product Overview:** *FDRMOVE and FDRPAS*

### FDRINSTANT for z/OS

Virtualizes backup with replication, making dedupe-friendly backup nondisruptive.

➤ **Product Overview:** *FDRINSTANT*

### FDRVIEWS

Storage analytics a new way to turn raw system data into smart storage-management decisions.

➤ **Product Overview:** *FDRVIEWS*

### FDRCRYPT Backup and B2B Data Exchange Encryption

Meet government identity protection guidelines and commercial governance on data security.

➤ **Product Overview:** *FDRCRYPT*

### SOSINSTANT

Integrates with EMC CLONE and IBM FlashCopy to create point-in-time copies of the disk volumes that business applications are using; allowing disaster recovery for distributed data to include non-disruptive backup and rapid recovery from disk.

➤ **Product Overview:** *SOSINSTANT*

### FDRSOS... Non-disruptive System z DR Protection for Linux on System z and distributed systems

System z off-network big data protection of Linux on System z and distributed cloud systems.

➤ **Product Overview:** *FDRSOS*

ORACLE/STK and other enterprise hardware and software storage-technology vendors to deliver complementary mainframe and open-system solutions that are chosen by many enterprise customers around the globe

to fulfill their business-resiliency needs, especially as they find themselves facing the need to accomplish more in the same or less amount of time, at lesser cost, using fewer resources.

**FATSCOPY is the only tape-migration, volume copy, stacking and VTL conversion utility you may ever need.**

Consolidate, stack or recatalog volumes and datasets when upgrading to new high-capacity tape or a virtual tape library? FATSCOPY, supporting CA-1, CA-TLMS and IBM DFSMSrmm, is the easiest and most reliable utility available to load, unload and reload conventional and virtual tape (VTL) systems.

**UPSTREAM/SOS network free, file level System z, Linux on System z and distributed data protection**

Provides high-speed incremental and file-level backup as well as file-level restore for open systems and Linux on System z data residing on EMC DMAX/VMAX and IBM 8700/8800 storage over high performance FICON channels.

➤ **Product Overview:** *UPSTREAM/SOS*

**FDR/UPSTREAM System z Protection for Linux on System z & Distributed Systems**

Employs System z mainframe resources to provide high-speed data protection and rapid recovery for AIX, Linux on Power, x86-64 and on System z, NetWare, OES2, UNIX and Windows storage across local SAN and heterogenous TCP/IP networks.

➤ **Product Overview:** *FDR/UPSTREAM*

**UPSTREAM Reservoir for Linux on System z & Distributed Data Protection**

Fast, reliable, easy-to-use Linux on System z and distributed cloud protection.

➤ **Product Overview:** *RESERVOIR*



**Find it all at [ibmsystemsmag.com/buyersguide/innovation](http://ibmsystemsmag.com/buyersguide/innovation)**



**INNOVATION Data Processing**

275 Paterson Ave.  
Little Falls, NJ 07424  
(973) 890-7300  
[sales@fdinnovation.com](mailto:sales@fdinnovation.com)  
[www.innovationdp.fdr.com](http://www.innovationdp.fdr.com)



# NewEra Software Inc.

**NewEra Software** has been a partner with its customers in the continuous pursuit of improvements in zEnterprise\* integrity, availability and compliance since 1990. Its first system software product, Stand Alone Environment (SAE), resolved unscheduled MVS system outages and remains today an essential element of all best-practice disaster-recovery plans. In the years that followed, continuous investment and technical innovation, specifically in z/OS\* system virtualization, resulted in The z/OS Inspection Server. This server is a core NewEra Technology that customers exploit when using The Image FOCUS and The IPLCheck family of predictive failure analysis (PFA) products. Our PFA products identify system configuration errors that will result in future system-initialization failures, thus allowing action to be taken now to prevent future denials of z/OS and subsystem resources. Of late, the company has placed increasing emphasis on helping customers adhere to ever-more stringent internal and external operational standards. When the requirement is not only to demonstrate but also to document system changes and compliance—PCI, HIPAA, GLBA and others—The Control Editor will provide the broad selection of easy-to-implement, customizable applications that organizations need in order to bring themselves ever closer to satisfying these most demanding requirements for system-change documentation.

## Products Available to View Online:

### Image Control Environment

Image Control Environment (ICE) includes these tools: Image FOCUS, IPLCheck and The Control Editor.

- **Whitepaper:** *What's New in z/OS V1R12 & V1R13*

### The Control Editor

The Control Editor provides noninvasive monitoring and control over z/OS configuration components.

- *zAuditing Essentials - Volume 1*

### IPLCheck

IPLCheck provides users with an integrated set of predictive failure analysis (PFA) "Health Checks."

***z/OS baselines built,  
then monitored  
for changes and  
conditions that result  
in initialization  
failures***

Our Image Control Environment (ICE) products—Image FOCUS, The Control Editor and IPLCheck—build z/OS configuration baselines then monitor for changes and conditions that result in initialization failures.

visit us at [www.newera-info.com](http://www.newera-info.com)



**NewEra Software Inc.**  
155 E. Main Ave., Suite 130  
Morgan Hill, CA 95037  
Jerry Seefeldt  
(408) 520-7101 x740  
[jms@newera.com](mailto:jms@newera.com)  
[www.newera.com](http://www.newera.com)

Find it all at [ibmsystemsmag.com/buyersguide/newera](http://ibmsystemsmag.com/buyersguide/newera)



## Get Social

Beyond the traditional printed and digital editions, *IBM Systems Magazine* endeavors to reach mainframe community members where they live—through social media. Stay in the loop through:

- Expert advice from Troy Coleman's weekly DB2utor blog:  
[ibmsystemsmag.blogs.com/db2utor](http://ibmsystemsmag.blogs.com/db2utor)
- A lighter take on IBM and IT trends from The Buzz blog:  
[ibmsystemsmag.blogs.com/the\\_buzz](http://ibmsystemsmag.blogs.com/the_buzz)
- Friending us on Facebook:  
[Facebook.com/MainframeMag](https://www.facebook.com/MainframeMag)
- Following us on Twitter:  
[Twitter.com/mainframemag](https://twitter.com/mainframemag)



**OpenTech Systems** is a leading provider of z/OS\* software for disaster recovery (DR), data-center consolidation/relocation and tape-data migration. OpenTech offers a family of software products that can provide complete DR solutions or augment existing DR processes. OpenTech's data-center-relocation software and services can help move the entire z/OS workload from one data center to another. OpenTech's tape-data migration software and services help assure integrity and efficiency when migrating tape data from one platform to another.

### Products Available to View Online:

Data Center  
Consolidation/  
Relocation Software &  
Services  
Disaster Recovery  
Tape Data Migration  
Software and Services

### OpenTech Systems Inc.

405 State Highway 121,  
Building C, Suite 130  
Lewisville, TX 75067  
1-800-460-3011  
[info@opentechsystems.com](mailto:info@opentechsystems.com)  
[www.opentechsystems.com](http://www.opentechsystems.com)

Find it all at [ibmsystemsmag.com/buyersguide/opentech](http://ibmsystemsmag.com/buyersguide/opentech)

**1 HOUR**  
SESSIONS

**40**  
WEBINARS  
ON-DEMAND

**24/7**  
ACCESS ANYWHERE

**IBM Systems**  
magazine

Webcast Event Center

View upcoming and on-demand webinars at: <https://ibmsystemsmag.webex.com>

# PKWARE Inc.

The **PKWARE** Solution is a complete system for reducing, securing, moving and storing data across the extended enterprise, both internally and externally, from mainframes to servers to desktops and into the cloud. PKWARE offers software solutions to critical IT problems, namely the explosive growth of data, the need to secure data and the emergence of data in the cloud. PKWARE offers a total solution for reducing and securing data in motion or at rest, so data can be securely moved or stored anywhere. The PKWARE Solution is used billions of times each day to manage risks associated with data security breaches while avoiding increased storage costs with data reduction of up to 95 percent and improving service delivery.

## Products Available to View Online:

### PKWARE PKZIP

PKWARE PKZIP compression and file management results in reduced costs and data center efficiencies.

🔗 **Webinar:** *Uncover the Potential of Your Enterprise Data Center*

### PKWARE SecureZIP

PKWARE SecureZIP pairs compression and strong encryption to deliver a data-centric security solution.

🔗 **Whitepaper:** *Spotlight on Mainframe Security: Data Authenticity and Endpoint Security*

### PKWARE SecureZIP PartnerLink

PKWARE SecureZIP PartnerLink allows secure data exchange with partners across computing platforms.

🔗 **Case Study:** *CMS Data Sharing Project Highlights the Benefits of a Multi-platform Approach*

REDUCE, SECURE,  
MOVE & STORE  
**YOUR DATA**



In motion and  
at rest



In any computing  
environment



Across the enterprise  
and with partners

Get an evaluation copy:  
[PKWARE.com/IBMSystems](http://PKWARE.com/IBMSystems)

**PKWARE®**

Find it all at [ibmsystemsmag.com/buyersguide/pkware](http://ibmsystemsmag.com/buyersguide/pkware)



**PKWARE Inc.**  
648 N. Plankinton Ave., Suite 220  
Milwaukee, WI 53203  
Jennifer Irwin  
1-800-219-7290  
[jennifer.irwin@pkware.com](mailto:jennifer.irwin@pkware.com)  
[www.pkware.com](http://www.pkware.com)



# Serena Software

**Serena Software** provides orchestrated IT and product-development solutions to the Global 2000. Serena's mission is to help enterprises orchestrate their processes for tremendous competitive advantage. Its 4,000 active enterprise customers, encompassing almost 1 million users worldwide, have made Serena the largest independent application lifecycle management (ALM) vendor and are now using Serena to orchestrate IT service management and other vital processes.

Headquartered in Silicon Valley, Serena serves enterprise customers from 29 offices in 14 countries. Serena is a portfolio company of Silver Lake Partners, a leader in private investments in technology-enabled industries.

"The support from Serena has been unsurpassed. Their availability to assist in problem determination and to provide a solution is exactly what our organization needs to improve performance. We needed a global and cost-effective approach, and this is exactly what Serena delivers." —Global 500 bank



## Products Available to View Online:

### Serena ChangeMan ZMF

ChangeMan ZMF provides a flexible and modern application development environment for the mainframe.

➤ **Whitepaper:** *Analyst Research on Mainframe Application Development*

### Serena ChangeMan SSM

Serena ChangeMan SSM ensures that only authorized changes are made into the production environment.

➤ **Webcast:** *Protect Your Infrastructure*

### Serena Comparex

Serena Comparex is the only mainframe comparison tool that supports data, text and directory files.

➤ *Read more now about Comparex*

### Serena StarTool Dump Analyzer (DA)

Serena StarTool DA provides intelligent dump analysis debugging for batch, CICS, DB2 and IMS.

➤ *Read now about StarTool DA.*

### Serena StarTool File and Data Management (FDM)

Serena StarTool FDM enables you to edit and manage PDSE, sequential, direct, DB2, VSAM and more.

➤ *Read now about StarTool FDM*

### Serena StarTool IOO

Serena StarTool IOO dynamically optimizes I/O to achieve dramatic throughput improvements.

➤ **Webcast:** *StarTool IOO*

Find it all at [ibmsystemsmag.com/buyersguide/serena](http://ibmsystemsmag.com/buyersguide/serena)



### Serena Software

1900 Seaport Blvd.  
Redwood City, CA 94063  
Jeff Westenhaber  
(713) 545-4014  
[jwestenhaber@serena.com](mailto:jwestenhaber@serena.com)  
[www.serena.com](http://www.serena.com)

**Sirius'** team of IBM System z\* engineers, software specialists and consultants is dedicated to providing the services that clients need to modernize their systems and optimize the performance of existing workloads. Our team has successfully implemented System z solutions for over 400 clients, and our expertise spans traditional System z (zOS\*, zManager\*, z/VM\*, z/VSE\*), High Availability (GDPS\*, WLM Security) and the complete middleware stack. Sirius specializes in new workloads (Linux\* on z, and BI/BA including IDAA, Cognos\*), and modernization solutions including SOA-based offerings and cloud on z. Let Sirius provide the expertise you need to get the most out of an existing system, or to implement a new one.



**Products Available to View Online:**

- Linux on System z Implementation Services
- Sirius System z Security Services
- Sirius zBuild Assist Implementation Services for z/OS

**Sirius Computer Solutions**  
 613 N.W. Loop 410, Suite 1000  
 San Antonio, TX 78216  
 1-800-460-1237  
 info@siriuscom.com  
 www.siriuscom.com/GoSystemsIBM



Find it all at [ibmsystemsmag.com/buyersguide/sirius](http://ibmsystemsmag.com/buyersguide/sirius)



**Syncsort** has been a leading global provider of high-performance mainframe sort technology for more than four decades, saving customers nearly \$220 million each year over inefficient competitive sort solutions<sup>1</sup>. Syncsort's solutions are fast and resource efficient mainframe data-sort technologies that help drive ROI with a unique combination of high-performance, optimal hardware utilization and ease of use.

<sup>1</sup>2,000 customers, 7M MIPS with DFSort, 2% Sort, 35% reduction with \$4,500 per MIP cost = \$220 million in savings

**Products Available to View Online:**

- Syncsort MFX
- Syncsort PROC MFX
- Syncsort PipeSort

**Syncsort Inc.**  
 50 Tice Blvd.  
 Woodcliff Lake, NJ 07677  
 Kathy Kroboth  
 (201) 930-8214  
 kkroboth@syncsort.com  
 www.syncsort.com/goibmsystemsmag



Find it all at [ibmsystemsmag.com/buyersguide/syncsort](http://ibmsystemsmag.com/buyersguide/syncsort)



**SysperTec's VIRTEL** is a Web-enabling product line for mainframe applications (CICS\*, IMS\*, TSO\*, etc.):

- Replaces TN/3270 with TCP/IP connections
- Replaces 3270 screens with user-friendly GUIs
- Exposes mainframe transactions and data as reusable Web services to Web applications and vice versa

VIRTEL's thin-client architecture works instantly with any Web-enabled device regardless of browser, OS or platform. It is critical to organizations that plan to:

- Use mobile devices and Apple products as Web-access devices
- Implement BYOD or desktop-virtualization initiatives
- Integrate mainframe applications and data to the cloud
- Extend selected mainframe transactions to untrained clients, partners and new staff

**Products Available to View Online:**

- VIRTEL Web Access
- VIRTEL Web Modernization
- VIRTEL Web Integration

**SysperTec**  
 406 Kinross Drive  
 Walnut Creek, CA 94598  
 Patrick Fournier  
 (925) 954-9649  
 patrick.fournier@sypertec.us  
 www.virtelweb.com

Find it all at [ibmsystemsmag.com/buyersguide/syspertec](http://ibmsystemsmag.com/buyersguide/syspertec)



Since 1982, **Treehouse Software** has been serving enterprises worldwide with industry-leading software products and outstanding technical support. Today, Treehouse is a global leader in providing data migration, replication and integration solutions for the most complex and demanding heterogeneous environments, as well as feature-rich, accelerated-ROI offerings for information delivery, business intelligence and analytics and application modernization. Treehouse Software customers are able to:

- REPLICATE Data Anywhere
- INTEGRATE Data Everywhere
- MODERNIZE Data from Legacy Applications
- ANALYZE Data for Business Advantage

**Products Available to View Online:**

- tcACCESS
- tcVISION
- DataNovata

**Treehouse Software**  
 2605 Nicholson Road, Suite 230  
 Sewickley, PA 15143  
 Wayne Lashley  
 (724) 759-7070  
 sales@treehouse.com  
 www.treehouse.com



Find it all at [ibmsystemsmag.com/buyersguide/treehouse](http://ibmsystemsmag.com/buyersguide/treehouse)

## Watch Out!

See the latest IBM videos waiting for you to watch online at [videos.ibmssystemsmag.com](http://videos.ibmssystemsmag.com)! With new content posted weekly, the site offers a wide range of mainframe-related videos from around the Web. Check out:

- Lectures
- How-to COBOL demonstrations
- Customer success stories
- Humorous commercials
- Nostalgic clips from early IBM films



**Tributary Systems** develops, sells and supports unified data-protection solutions and services to enterprise data centers. Tributary's Storage Director is a patented disk-to-disk-to-tape backup storage virtualization and consolidation solution that unifies data protection across heterogeneous servers, including IBM z\* (and Linux\* on z\*), IBM Power Systems\* (IBM i, AIX\*, Linux), HP (NonStop and Open VMS), VMware\*, Linux, UNIX\* and Windows\*. Founded in 1990, Tributary Systems is an IBM Solution Reseller (ISR) and IBM Business Partner.

### Products Available to View Online:

Storage Director  
Tributary Systems  
Backup Storage  
Integration

### Tributary Systems Inc.

3717 Commerce Place, Suite C  
Bedford, TX 76021  
Edward Ahl  
(972) 924-4575  
[eahl@tributary.com](mailto:eahl@tributary.com)  
[www.tributary.com](http://www.tributary.com)



Find it all at [ibmsystemsmag.com/buyersguide/tributary](http://ibmsystemsmag.com/buyersguide/tributary)

# NOW PLAYING: VIDEOS



» [videos.ibmssystemsmag.com](http://videos.ibmssystemsmag.com)

**IBM**Systems  
magazine



# Trident Services

Since 1978, **Trident Services** has established a solid reputation for the excellence of its software, the responsiveness of its support team and the expertise of its consulting staff, with more than 35 years of experience in their individual specialties. Trident, a committed member of the mainframe community, has been an IBM Business Partner for more than 20 years. Since launching its first software solution in 1988, Trident has continued to develop and enhance its software products and services to keep pace with industry changes, emerging technologies and client-driven needs.

Solutions to work smarter: Trident's flagship product, zOSEM (zOperating System Environment Manager), is a powerful tool of strategic importance in the enterprise server environment. Driven by a simple ISPF interface, zOSEM encompasses a multitude of features for improved control, throughput and processing efficiency in a z/OS\* environment. zOSEM helps customers reduce and control ISV costs and eliminate exit-migration issues. It also provides an easy-to-use HSM optimizer, which can improve HSM performance and reduce CPU resources.

Working smarter is a necessity in today's economic climate; Trident customers can relax knowing they have a smart solution that saves time and money, and maximizes resources.

**Reduce your  
operating  
costs on  
System z  
with zOSEM.**

**Already known as  
the most reliable,  
scalable and  
secure platform,  
make your  
mainframe more  
cost-effective and  
easier to manage  
with zOSEM.**

Visit [triserv.com](http://triserv.com) to  
learn more.

**TRIDENT**  
S E R V I C E S  
Solutions for z/OS & Enterprise Servers

## Products Available to View Online:

### z/OS Systems Consulting

With more than 35 years of consulting expertise, the team at Trident Services has you covered.

➤ Visit our website ([www.triserv.com](http://www.triserv.com)) for complete details on all of the services the Trident team provides

### zOSEM

zOSEM, making z/OS easier to manage! See how this solution can benefit your entire mainframe team.

➤ [zOSEM\\_Benefits\\_2009.pdf](#)

### zOSEM

Reduce CPU consumption and ease management of z/OS. What could you be saving with zOSEM?

➤ More zOSEM product information can be found at <http://www.triserv.com/zosem.html>

Find it all at [ibmsystemsmag.com/buyersguide/Trident](http://ibmsystemsmag.com/buyersguide/Trident)



**Trident Services**  
1260 41st Ave., Suite K  
Capitola, CA 95010  
1-800-887-4336  
[sales@triserv.com](mailto:sales@triserv.com)  
[www.triserv.com](http://www.triserv.com)

# Vanguard Integrity Professionals

A premier cyber and information security and compliance solution provider of choice for large government agencies, financial services companies, insurance companies, banks, utilities, retailers, healthcare providers and others. Solutions include security training, professional services, managed security services and automated software solutions. Vanguard IAM provides automated security management and reporting across multiple platforms such as Windows\*, UNIX\*, Linux\*, AIX\*, HP and z/OS\*. Covers VPNs, routers, switches and firewalls. Extends the same controls utilized within secure domains and networks out to private and public cloud implementations, from a common central control point. Vanguard GRC provides continuous monitoring and automated reporting, analysis and alerts. It is a system of preventive, detective and corrective enforcement of deviations to security configurations and policy. Includes intrusion detection and prevention capabilities. Satisfies regulatory and audit compliance requirements for SOX, HIPAA, GLB, FFIEC, NIST, DoD DISA and others. Vanguard's software solutions are developed in the U.S., and all customer support originates from within the U.S. 24-7-365.

## Products Available to View Online:

### Vanguard IAM Identity and Access Management Solutions

Host, network and the cloud. Extended user authentication, automated administration and reporting.

➤ [Product Brochures](#)

### Vanguard GRC Governance, Risk-Mgmt. and Compliance Solutions.

Satisfies regulatory and audit compliance requirements for SOX, HIPAA, GLB, FFIEC, NIST, DoD, DISA, BASEL II and ISO/IEC38500

➤ [Product Brochures](#)

### Vanguard Managed Security Services

From staff augmentation, security remediation and implementation to full outsourced security.

➤ [Product Brochures](#)

### Vanguard Professional Services

Security assessment, remediation, implementation and special projects for host, network and cloud.

➤ [Global Information Security Consulting](#)

### Vanguard Large Enterprise Security Training

Learn proper security config controls, identity and access policies and compliance reporting.

➤ [Vanguard Training](#)

### Vanguard Security & Compliance 2013

The best training event customized for large-enterprise security and compliance personnel.

➤ [The Best Information Security Training](#)

**VANGUARD**  
Integrity Professionals  
Information Security Experts

**FINALLY  
SOMEONE  
BUILT WHAT I  
ASKED FOR!**

**One automated tool  
that produces  
reports which  
satisfy every audit.**

**SOX, HIPAA, GLB,  
PCI-DSS, FFIEC,  
NIST, DISA,  
Internal Audit**

**VANGUARD  
CONFIGURATION  
MANAGER™  
MADE IN THE USA**

Find it all at [ibmsystemsmag.com/buyersguide/  
Vanguard-Integrity-Professionals-Inc](http://ibmsystemsmag.com/buyersguide/Vanguard-Integrity-Professionals-Inc)



Vanguard Integrity Professionals Inc.  
6625 S. Eastern Ave., Suite 100  
Las Vegas, NV 89119  
Sales Manager  
(702) 794-0014  
[sales@go2vanguard.com](mailto:sales@go2vanguard.com)  
[www.go2vanguard.com](http://www.go2vanguard.com)



From its 33,000-square-foot facility in Morrisville, N.C., **Visara International** offers a full portfolio of network- and systems-management solutions that provide communication controllers and servers, virtual tape system, master console consolidation, printers and displays. Solutions that enable seamless migration of existing “big-iron” networks with LANs and WANs into an enterprise network, enhanced security through centralized maintenance and management, and ways to control cost of operations through hardware consolidation.

**Products Available to View Online:**

- Vi-4990
- Virtual Tape Systems
- FEP-4600
- Communications Controller
- CCA-3074
- Console Concentrator

**Visara International**  
 2700 Gateway Centre Blvd.,  
 Suite 600  
 Morrisville, NC 27560  
 Robert Caserta  
 (919) 882-0200  
 caserta@visara.com  
 www.visara.com

Find it all at [ibmsystemsmag.com/buyersguide/visara](http://ibmsystemsmag.com/buyersguide/visara)



*The bridge from Data Discovery to Data Security*

Co-founded by Dr. Gene Amdahl and Raymond A. Williams Jr., who also co-founded Amdahl Corporation, **Xbridge** provides the mainframe market with world-class data-loss-prevention (DLP) data-discovery solutions, helping companies locate sensitive information as a first step in protecting credit card numbers, personal identification numbers, medical data, etc. Xbridge’s DataSniff solution can scan structured and unstructured data in datasets and mainframe databases. About 70 percent of the world’s business data resides on mainframe systems and mainframes have data that has existed for decades. DataSniff gives organizations the locations of the sensitive data they did not know existed and allows them to take steps to remediate the exposures this data creates.

**Products Available to View Online:**

DataSniff

**Xbridge Systems**  
 1941 Landings Drive  
 Mountain View, CA 94043  
 Susan Musgrave  
 (650) 564-9800  
 smusgrave@xbridgesystems.com  
 www.xbridgesystems.com

Find it all at [ibmsystemsmag.com/buyersguide/xbridge](http://ibmsystemsmag.com/buyersguide/xbridge)

**Award-winning site**

**Stay informed on all IBM Systems technology@**

[ibmsystemsmag.com/mainframe](http://ibmsystemsmag.com/mainframe)

- Mainframe content updated daily, weekly, and monthly with the latest IBM Systems news and announcements
- Exclusive articles, analysis, code
- Five years of archived articles, case studies
- New Product information and upgrades
- Industry blogs featuring Troy Coleman in DB2utor/Mainframe



New Technology • Thought Leadership • Events and Education • Videos • Webinars • Tips and Techniques • Product News



## Hardware

### Accessories/Miscellaneous

#### General

**Eaton 9395 UPS** ..... page 23  
 ibmsystemsmag.com/buyersguide/eaton

### Communications/Connectivity

#### General

**CCA-3074 Console Concentrator** ..... page 36  
 ibmsystemsmag.com/buyersguide/visara

**FEP-4600 Communications Controller** ..... page 36  
 ibmsystemsmag.com/buyersguide/visara

### Storage

#### Tape

**Tape/Assist** ..... page 10  
 ibmsystemsmag.com/buyersguide/21stcentury

**Vi-4990 Virtual Tape Systems** ..... page 36  
 ibmsystemsmag.com/buyersguide/visara

## Software

### Application Development

#### Change Management

**Software Change Management for Mainframe** ..... online only  
 ibmsystemsmag.com/buyersguide/ca

#### Database Management

**DataVantage for IMS** ..... page 21  
 ibmsystemsmag.com/buyersguide/datavantage

#### Editors

**EzEDIT** ..... page 20  
 ibmsystemsmag.com/buyersguide/csi

#### General

**Application Performance Management** ..... page 19  
 ibmsystemsmag.com/buyersguide/compuware

**DataVantage for VSAM** ..... page 21  
 ibmsystemsmag.com/buyersguide/datavantage

#### Modernization

**Ivory Service Architect** ..... page 25  
 ibmsystemsmag.com/buyersguide/GT-Software

**Ivory VisualConnect** ..... page 25  
 ibmsystemsmag.com/buyersguide/GT-Software

**tcVISION** ..... page 32  
 ibmsystemsmag.com/buyersguide/treehouse

#### Performance

##### Cross-Enterprise Application

**Performance Management** ..... online only  
 ibmsystemsmag.com/buyersguide/ca

**Syncsort MFX** ..... page 32  
 ibmsystemsmag.com/buyersguide/syncsort

**Syncsort PipeSort** ..... page 32  
 ibmsystemsmag.com/buyersguide/syncsort

**Syncsort PROC MFX** ..... page 32  
 ibmsystemsmag.com/buyersguide/syncsort

**Test Data Optimization** ..... online only  
 ibmsystemsmag.com/buyersguide/compuware

#### Query Tools

**DataNovata** ..... page 32  
 ibmsystemsmag.com/buyersguide/treehouse

#### Test Management

##### Application Quality and Testing Tools

**for Mainframe** ..... online only  
 ibmsystemsmag.com/buyersguide/ca

**DataVantage for DB2** ..... page 21  
 ibmsystemsmag.com/buyersguide/datavantage

#### Web Enablement

**VIRTEL Web Access** ..... page 32  
 ibmsystemsmag.com/buyersguide/syspertec

**VIRTEL Web Integration** ..... page 32  
 ibmsystemsmag.com/buyersguide/syspertec

**VIRTEL Web Modernization** ..... page 32  
 ibmsystemsmag.com/buyersguide/syspertec

### Business Intelligence

#### Data Mining

**DataMiner** ..... page 20  
 ibmsystemsmag.com/buyersguide/csi

### Communications/Connectivity

#### 3270 Emulation

**InterSession** ..... page 21  
 ibmsystemsmag.com/buyersguide/data21

#### File Transfer

**DataMover** ..... page 20  
 ibmsystemsmag.com/buyersguide/csi

**SSR Client/Server** ..... page 12  
 ibmsystemsmag.com/buyersguide/appliedsoftware

### Database

#### CICS

**VShare** ..... page 20  
 ibmsystemsmag.com/buyersguide/csi

## DB2

**BMC CATALOG MANAGER for DB2** ..... page 16  
 ibmsystemsmag.com/buyersguide/BMC-Software

**BMC CHANGE MANAGER for DB2** ..... page 16  
 ibmsystemsmag.com/buyersguide/BMC-Software

**BMC Database Administration for DB2** ..... page 16  
 ibmsystemsmag.com/buyersguide/BMC-Software

**BMC Recovery Management for DB2** ..... page 16  
 ibmsystemsmag.com/buyersguide/BMC-Software

**BMC SQL Performance for DB2** ..... page 16  
 ibmsystemsmag.com/buyersguide/BMC-Software

**Systems Performance for DB2** ..... page 16  
 ibmsystemsmag.com/buyersguide/BMC-Software

#### General

**Ivory Data Access** ..... page 25  
 ibmsystemsmag.com/buyersguide/GT-Software

**tcACCESS** ..... page 32  
 ibmsystemsmag.com/buyersguide/treehouse

**VSUM** ..... page 20  
 ibmsystemsmag.com/buyersguide/csi

#### IMS

**BMC Backup and Recovery Solution for IMS** ..... page 16  
 ibmsystemsmag.com/buyersguide/BMC-Software

**BMC MAXM Database Advisor for IMS** ..... page 16  
 ibmsystemsmag.com/buyersguide/BMC-Software

### High Availability

#### Data Replication

**FDR Plug and Swap (FDRPAS) for z/OS** ..... page 26  
 ibmsystemsmag.com/buyersguide/innovation

**FDRMOVE with FDRPAS (Plug and Swap)** ..... page 26  
 ibmsystemsmag.com/buyersguide/innovation

#### General

**BMC APPLICATION RESTART CONTROL** ..... page 16  
 ibmsystemsmag.com/buyersguide/BMC-Software

**RTD** ..... page 21  
 ibmsystemsmag.com/buyersguide/dino

**T-REX** ..... page 21  
 ibmsystemsmag.com/buyersguide/dino

**Veloci-Raptor** ..... page 21  
 ibmsystemsmag.com/buyersguide/dino

## Linux on System z

### General

**CA Management Solutions for Linux on System z** ..... online only  
 ibmsystemsmag.com/buyersguide/ca

## Program Utilities

### General

**Serena Comparex** ..... page 31  
 ibmsystemsmag.com/buyersguide/serena

**Serena StarTool Dump Analyzer (DA)** ..... page 31  
 ibmsystemsmag.com/buyersguide/serena

**Serena StarTool File and Data Management (FDM)** ..... page 31  
 ibmsystemsmag.com/buyersguide/serena

## Sales and Marketing Support

### General

**Mainframe Software Rationalization Program (MSRP)** .. online only  
 ibmsystemsmag.com/buyersguide/ca

## Systems Management

### Automated Operations

**BMC MainView AutoOPERATOR**..... page 16  
 ibmsystemsmag.com/buyersguide/BMC-Software

**CA Mainframe Chorus**..... online only  
 ibmsystemsmag.com/buyersguide/ca

**CA Mainframe Software Manager**..... online only  
 ibmsystemsmag.com/buyersguide/ca

**Next-Generation Mainframe Management**..... online only  
 ibmsystemsmag.com/buyersguide/ca

**Workload Scheduling and Automation Suite** ..... page 13  
 ibmsystemsmag.com/buyersguide/asgsoftware

### Backup

**FDR/UPSTREAM System z Protection for Linux on System z & Distributed Systems** ..... page 26  
 ibmsystemsmag.com/buyersguide/innovation

**FDRINSTANT for z/OS**..... page 26  
 ibmsystemsmag.com/buyersguide/innovation

**FDRSOS Non-disruptive System z DR Protection for Linux on System z & Distributed Systems** ..... page 26  
 ibmsystemsmag.com/buyersguide/innovation

**Storage Management for Enterprise**..... online only  
 ibmsystemsmag.com/buyersguide/ca

**SOSINSTANT** ..... page 26  
 ibmsystemsmag.com/buyersguide/innovation

**Storage Director**..... page 33  
 ibmsystemsmag.com/buyersguide/tributary

### Compliance

**DataSniff** ..... page 36  
 ibmsystemsmag.com/buyersguide/xbridge

**eventACTION** ..... page 11  
 ibmsystemsmag.com/buyersguide/actionssoftware

**IPLCheck** ..... page 28  
 ibmsystemsmag.com/buyersguide/newera

**Serena ChangeMan SSM**..... page 31  
 ibmsystemsmag.com/buyersguide/serena

**The Control Editor**..... page 28  
 ibmsystemsmag.com/buyersguide/newera

**ussACTION** ..... page 11  
 ibmsystemsmag.com/buyersguide/actionssoftware

### Disaster Recovery

**Disaster Recovery**..... page 29  
 ibmsystemsmag.com/buyersguide/opentech

**DR/VFI** ..... page 10  
 ibmsystemsmag.com/buyersguide/21stcentury

**UPSTREAM Reservoir for Linux on System z & Distributed Data Protection** ..... page 27  
 ibmsystemsmag.com/buyersguide/innovation

**UPSTREAM/SOS Network Free, File Level System z, Linux on System z & Distributed Data Protection** ..... page 27  
 ibmsystemsmag.com/buyersguide/innovation

### General

**ASG-EAMS (Enterprise Automation Management Suite)** .. page 13  
 ibmsystemsmag.com/buyersguide/asgsoftware

**Data Center Consolidation/Relocation Software & Services**..... page 29  
 ibmsystemsmag.com/buyersguide/opentech

**DCC - Dlm Control Center** ..... page 22  
 ibmsystemsmag.com/buyersguide/dts

**EASY/Exit** ..... page 22  
 ibmsystemsmag.com/buyersguide/dts

**Explorer GUI** ..... page 22  
 ibmsystemsmag.com/buyersguide/dts

**FDRVIEWS**..... page 26  
 ibmsystemsmag.com/buyersguide/innovation

**JCL-QA** ..... page 22  
 ibmsystemsmag.com/buyersguide/dts

**Monitor** ..... page 22  
 ibmsystemsmag.com/buyersguide/dts

**PKWARE PKZIP** ..... page 30  
 ibmsystemsmag.com/buyersguide/pkware

**PKWARE SecureZIP**..... page 30  
 ibmsystemsmag.com/buyersguide/pkware

**PKWARE SecureZIP PartnerLink**..... page 30  
 ibmsystemsmag.com/buyersguide/pkware

**Space Recovery System (SRS)**..... page 22  
 ibmsystemsmag.com/buyersguide/dts

**Systems Management for Mainframe** ..... online only  
 ibmsystemsmag.com/buyersguide/ca

**SpaceFinder Storage Management Solutions** ..... page 10  
 ibmsystemsmag.com/buyersguide/21stcentury

**zOSEM** ..... page 34  
 ibmsystemsmag.com/buyersguide/Trident

### Help Desk (Administrator)

**ReACT** ..... page 14  
 ibmsystemsmag.com/buyersguide/aspg

### Job Management

**BMC MainView Batch Optimizer** ..... page 16  
 ibmsystemsmag.com/buyersguide/BMC-Software

**JCL Management Suite** ..... page 13  
 ibmsystemsmag.com/buyersguide/asgsoftware

### Job Scheduling

**BMC Control-M Workload Automation**..... page 17  
 ibmsystemsmag.com/buyersguide/BMC-Software

### Middleware Management

**BMC Middleware Administration** ..... page 17  
 ibmsystemsmag.com/buyersguide/BMC-Software

### Monitoring

**BMC Application Transaction Tracing**..... page 17  
 ibmsystemsmag.com/buyersguide/BMC-Software

**BMC Middleware Monitoring**..... page 17  
 ibmsystemsmag.com/buyersguide/BMC-Software

**Image Control Environment**..... page 28  
 ibmsystemsmag.com/buyersguide/newera

**Performance and Availability Management (ASG-TMON Suite)**..... page 13  
 ibmsystemsmag.com/buyersguide/asgsoftware

## Performance

**BMC Capacity Management for Mainframes** ..... page 16  
ibmsystemsmag.com/buyersguide/BMC-Software

**BMC MainView for Linux-Servers** ..... page 16  
ibmsystemsmag.com/buyersguide/BMC-Software

**BMC MainView for z/OS** ..... page 16  
ibmsystemsmag.com/buyersguide/BMC-Software

**BMC MainView SRM Reporting** ..... page 17  
ibmsystemsmag.com/buyersguide/BMC-Software

**Capacity Planning and Utilization Modeling  
(ASG-PERFMAN Suite)** ..... page 13  
ibmsystemsmag.com/buyersguide/asgsoftware

**IAM and IAM/AIX** ..... page 26  
ibmsystemsmag.com/buyersguide/innovation

**Mainframe Application Performance Management  
(ASG-TriTune Suite)** ..... page 13  
ibmsystemsmag.com/buyersguide/asgsoftware

**Serena StarTool IOO** ..... page 31  
ibmsystemsmag.com/buyersguide/serena

**zOSEM** ..... page 34  
ibmsystemsmag.com/buyersguide/Trident

## Report Management

### Output Management and Enterprise

**Report Management** ..... online only  
ibmsystemsmag.com/buyersguide/ca

## Security

**Data Encryption Facility (DEF)** ..... page 12  
ibmsystemsmag.com/buyersguide/appliedsoftware

**FDRCRYPT Backup and B2B  
Data Exchange Encryption** ..... page 26  
ibmsystemsmag.com/buyersguide/innovation

**FDRERASE for z/OS and FDRERASE/OPEN** ..... page 26  
ibmsystemsmag.com/buyersguide/innovation

**Security Management for Mainframe** ..... online only  
ibmsystemsmag.com/buyersguide/ca

**Vanguard GRC Governance, Risk-Mgmt,  
and Compliance** ..... page 35  
ibmsystemsmag.com/buyersguide/Vanguard-Integrity-Professionals-Inc

**Vanguard IAM Identity and Access  
Management Solutions** ..... page 35  
ibmsystemsmag.com/buyersguide/Vanguard-Integrity-Professionals-Inc

**Vanguard Managed Security Services** ..... page 35  
ibmsystemsmag.com/buyersguide/Vanguard-Integrity-Professionals-Inc

**ZIP/390** ..... page 21  
ibmsystemsmag.com/buyersguide/data21

**ZIP/VSE** ..... page 21  
ibmsystemsmag.com/buyersguide/data21

## Security (Administrator)

**ERQ - Easy RACF Query** ..... page 14  
ibmsystemsmag.com/buyersguide/aspg

**MegaCryption** ..... page 14  
ibmsystemsmag.com/buyersguide/aspg

## Tape Management

**FATSCOPY with FATSERASE** ..... page 26  
ibmsystemsmag.com/buyersguide/innovation

**GFS/Stack Automatic Multi-file** ..... page 23  
ibmsystemsmag.com/buyersguide/gfs

**GFS/TQS Tape Quality System** ..... page 23  
ibmsystemsmag.com/buyersguide/gfs

**Tape Data Migration Software and Services** ..... page 29  
ibmsystemsmag.com/buyersguide/opentech

## Tools and Utilities

### General

**FileMarvel** ..... page 20  
ibmsystemsmag.com/buyersguide/csi

**TSO Superset Utilities** ..... page 12  
ibmsystemsmag.com/buyersguide/appliedsoftware

## Warehouse Management

### General

**Eaton 9395 UPS** ..... page 23  
ibmsystemsmag.com/buyersguide/eaton

**GFS/AFM Advanced File Manager** ..... page 23  
ibmsystemsmag.com/buyersguide/gfs

**Managed Mainframe Services** ..... page 12  
ibmsystemsmag.com/buyersguide/acxiom

## Education

### Classroom

#### General

**Vanguard Large Enterprise Security Training** ..... page 35  
ibmsystemsmag.com/buyersguide/Vanguard-Integrity-Professionals-Inc

**Vanguard Security & Compliance 2013** ..... page 35  
ibmsystemsmag.com/buyersguide/Vanguard-Integrity-Professionals-Inc

## Services

### Consulting

#### General

**Sirius System z Security Services** ..... page 32  
ibmsystemsmag.com/buyersguide/sirius

**z/OS Systems Consulting** ..... page 34  
ibmsystemsmag.com/buyersguide/trident

### Disaster Recovery

#### General

**Recoverability Assessment Service** ..... page 10  
ibmsystemsmag.com/buyersguide/21stcentury

**Tributary Systems Backup Storage Integration** ..... page 33  
ibmsystemsmag.com/buyersguide/tributary

### Outsourcing

#### General

**Cloud Services** ..... page 12  
ibmsystemsmag.com/buyersguide/acxiom

**Managed Server Services** ..... page 12  
ibmsystemsmag.com/buyersguide/acxiom

### Systems Integration

#### General

**Linux on System z Implementation Services** ..... page 32  
ibmsystemsmag.com/buyersguide/sirius

**Sirius zBuild Assist Implementation Services  
for z/OS** ..... page 32  
ibmsystemsmag.com/buyersguide/sirius

**Tributary Systems Backup Storage Integration** ..... page 33  
ibmsystemsmag.com/buyersguide/tributary

**Vanguard Professional Services** ..... page 35  
ibmsystemsmag.com/buyersguide/Vanguard-Integrity-Professionals-Inc

## Advertisers' Index

<b>ColeSoft Marketing Inc.</b> ..... 4 www.colesoft.com
<b>Compuware</b> ..... 9 compuware.com/mainframe
<b>DataVantage</b> ..... 40 www.DataVantage.com
<b>Edge Information Group</b> ..... 8 www.edge-information.com
<b>IBM Technical Conferences</b> ..... 6, 15 ibm.com/systems/training/sysmag ibm.com/systems/conferenceseries
<b>SHARE</b> ..... 23 www.share.org
<b>SUSE Linux</b> ..... 3 www.suse.com
<b>Trident Services Inc.</b> ..... 2 www.triserv.com





## DATA MASKING:

# Use it or Lose it!

The last thing you want is to lose control of your confidential data, especially when it contains Personally Identifiable Information (PII). The risks of using production data for non-production purposes grow daily: data theft or misuse, audit failure, non-compliance with government regulations and more. DataVantage® for z/OS masks sensitive information for use in application development, testing, training and more, allowing you to create PII-protected datasets via automated, repeatable processes in z/OS environments.

**For more than 30 years, hundreds of Fortune 1000 companies worldwide have selected Direct Computer Resources' patented software solutions to manage, test and, for the last decade, protect data safely, efficiently and affordably.**

**FREE WEBEX DATA PRIVACY CONSULTATION** - Contact us today at **877.704.0077** or **MaskMyData@DataVantage.com** and learn why top IT decision-makers are choosing DataVantage to protect PII as mandated by regulations, audits and internal corporate policies.

### Data Protection with DataVantage:

- ✓ Single-day implementation & training
- ✓ No disruption to current business processes
- ✓ Masking on-the-fly
- ✓ Scalable; repeatable

**877.704.0077**

**MaskMyData@DataVantage.com**  
**www.DataVantage.com.**