

myprojectorlamps.com

**The most trusted, dependable name
in projector lamp sales.**



<http://www.myprojectorlamps.com>



<http://www.myprojectorlamps.ca>



<http://www.myprojectorlamps.eu>

The following projector manual has not been modified or altered in any way.

Acer WP100

User's Guide

Acer WP100

Copyright © 2005. Acer Incorporated.
All Rights Reserved.

Acer WP100 User's Guide
Original Issue: October 2005

Acer and the Acer logo are registered trademarks of Acer Incorporated. Other companies' product names or trademarks are used herein for identification purposes only and belong to their respective companies.

Disposal instructions



Do not throw this electronic device into the trash when discarding. To minimize pollution and ensure utmost protection of the global environment, please recycle.



Table of Contents



Disposal instructions	3
Table of Contents.....	5
Introduction	6
System Requirements	6
I/O Interface	6
Package contents	7
Setting up your WPG	8
Connecting to the WPG for the first time	9
Downloading the software	10
Connecting to a projector	13
Using the audio function.....	14
Configuring your Acer WPG.....	16
Projector ID	16
Configuration password setup.....	16
Upgrade firmware	18
Network settings.....	18
Projection controls.....	19
Hide	19
Freeze	19
Projector remote control.....	19
Hotkey explanation	20
Appendix A: Regulation & safety notices.....	21

Introduction

The Acer WP100 Wireless Presentation Gateway (WPG) is an easy-to-use device that enables multiple users to connect to an Acer projector wirelessly. This eliminates the need to plug and unplug cables, enabling more efficient use of meeting time, especially when there is more than one presenter in a meeting.

System Requirements:

- Operating system: Windows® 2000 or Windows® XP
- CPU: Intel® Pentium® III at 750 MHz or equivalent with 128 MB of RAM
- Wireless LAN: IEEE 802.11b/g enabled
- Internet Browser: Internet Explorer 5.0 or above

I/O Interface:



No.	Item	Description
1	Antenna connector with cap	For attaching the optional antenna to enhance wireless performance.
2	Power LED	Indicates the WPG's status.
3	Reset button	Resets the WPG to its factory default settings.
4	Audio-out jack	For outputting audio signals received wirelessly from the PC.
5	RJ-45 Ethernet jack	For connecting the WPG to the Internet via a LAN.
6	5 V DC-in power jack	For connecting to an external 5 V power source.
7	DVI connector	Connect to the projector's DVI connector (transmits visual data received wirelessly from the PC).

Introduction

Package contents

Upon opening your WPG, you should find the following items. If any of them is missing, please contact your Acer dealer.



Wireless Presentation Gateway



5 V power adapter



Power plug (optional)



DVI-to-VGA converter



DC-to-DC power cable



User's Guide (on CD)



Quick Guide



This unit is to be used with the power adapter listed below:

Manufacturer: Kuantech

Model No.: KSAFC0500200W1UV

Setting up your WPG

You need to set up your WPG before you can use it. This is achieved by simply plugging the WPG into your projector's DVI port. There are three possible ways to provide power to your WPG:

1. Some projector models support powering the WPG through the DVI port.
2. Some projectors have a built-in DC-out jack that you can use to provide power to the WPG. Ensure that your projector supplies 5 V DC if it is equipped with a DC-out jack.
3. Use the power adapter to supply power to the WPG.



If your projector is not equipped with a DVI connector, you can attach the bundled DVI-to-VGA converter to the DVI connector of the WPG, and then plug the VGA connector of the converter into the projector.

Check the LED for the power status.

- Red indicates that the WPG is receiving power, but is inactive.
- Green indicates that the WPG is being used to project images.

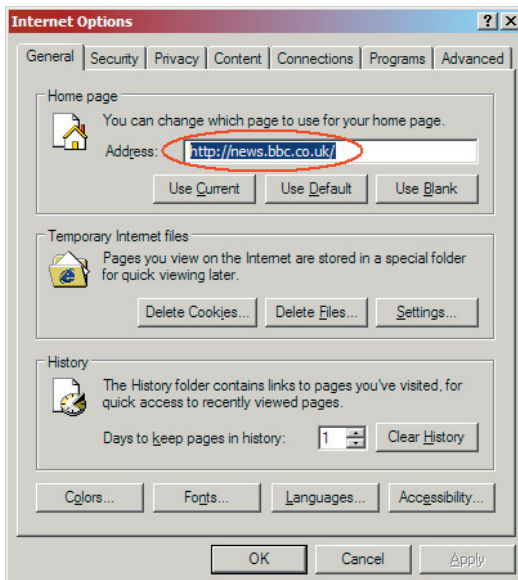
You may also like to connect a LAN cable to the LAN (RJ-45) port on the side of the dongle. This will allow you to connect to the Internet to retrieve interactive content or download firmware upgrades as they become available.

Connecting to the WPG for the first time

If this is the first time you've connected to the WPG, you will need to download and install the driver from the WPG. The software is stored on the WPG, so there is no need for an installation CD. Ensure that you have administrator-level permission on your computer so that you can install the software.



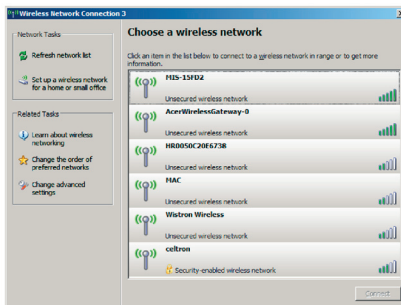
To download the software, you must remove LAN cable from your PC and ensure that your browser is set to open up a website. If your browser is set to open with a blank page, you will not be able to download the software. To check this, select Tools > Internet Options. Ensure that there is a website in the text box.



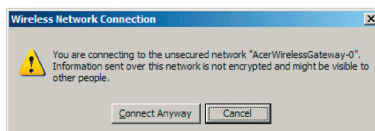
Connecting to the WPG for the first time

Downloading the software

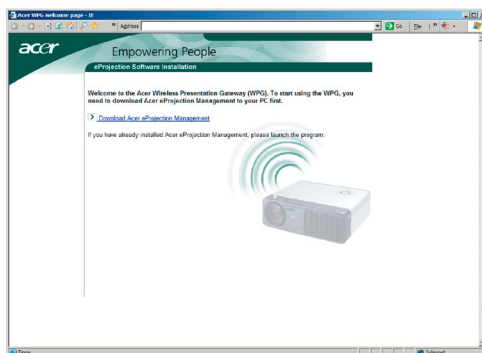
1. Switch on your notebook, and activate the wireless LAN.
2. Scan for available WLAN APs using your preferred WLAN manager.
3. Select the AP labeled "AcerWirelessGateway" from the list of available APs. Connect to this AP. If there is more than one WPG listed, determine which one is the one you want to connect to from the SSID listed in the upper left-hand corner of the screen.



4. If you receive any security warnings, select "Connect Anyway."

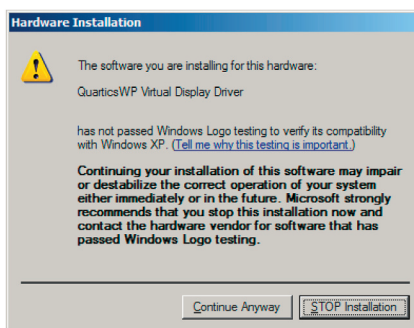
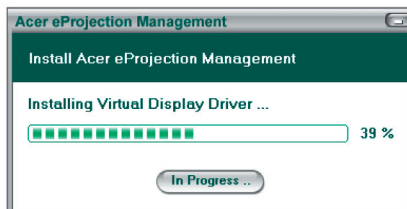
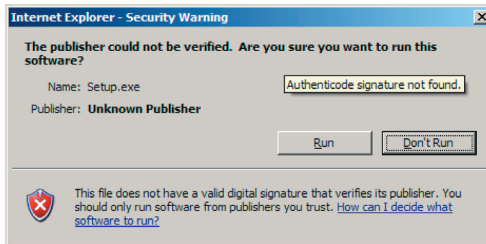


5. Once the connection is established, open your Internet browser. You will automatically be taken to the Acer WPG welcome page, where you will be able to download the driver.



Connecting to the WPG for the first time

6. Click on the link to download and install the driver. If you receive any security warnings, click "OK" to proceed with the installation procedure. During the driver installation, your screen may flicker.



Connecting to the WPG for the first time

7. Once the installation is complete, the Acer Wireless Projection Gateway software will open.



Connecting to a projector

Once you've installed the software, you will be able to connect to any projector that is equipped with the Acer WPG. To connect to a projector, simply double-click the Acer WPG icon on your desktop to launch the application.



The application will automatically detect available WPGs. Each WPG is identifiable by the "AcerWirelessGateway-" indicator in the SSID. If the projector is installed in a permanent location, you may also choose to assign a specific SSID to that projector, indicating, for example, the number of the room in which the projector is installed (refer to "Configuration" later in this guide).

If there are multiple WPGs within the range of your notebook's receiver (they may be in different rooms), and the feature is enabled (refer to "Configuration" later in this guide), you will be able to identify the correct one by the "Projector ID" indicated in the top left-hand corner of the projected screen. The Projector ID consists of four randomly-generated numbers. Entering these numbers into the WPG application on your notebook will restrict your connection to only that projector.

Only one user can use the WPG at any time; if another user wishes to use the projector, you will need to click **Disconnect** to stop using the projector, and allow someone else to use the projector.

Using the audio function

If you're using your WPG, you can play audio content through the projector. To play sound using the WPG, you must plug external speakers into the WPG's audio-out jack, or connect the projector's audio-in to the WPG's audio-out.

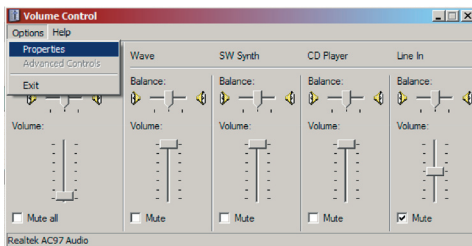


Your audio driver may have different terminology for some of the settings required below.

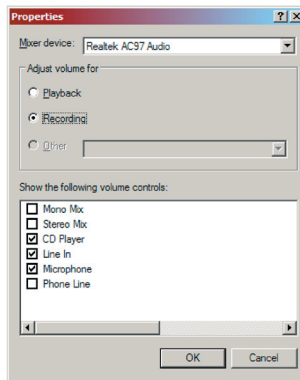
If you wish to use the WPG's audio features, please ensure that none of the audio settings is muted.

To set up the audio, you must perform the following steps:

1. Open the Windows® audio controls by double-clicking on the speaker icon in the task tray.
2. Select Options > Properties.

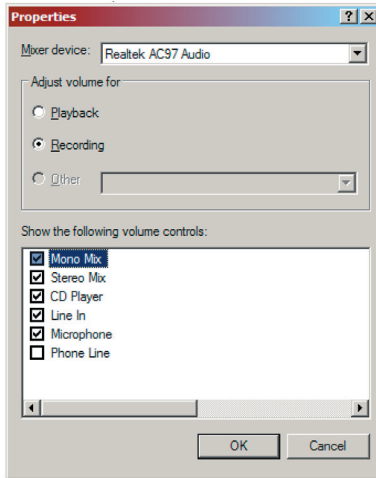


3. Select Recording in the "Adjust volume for" area.

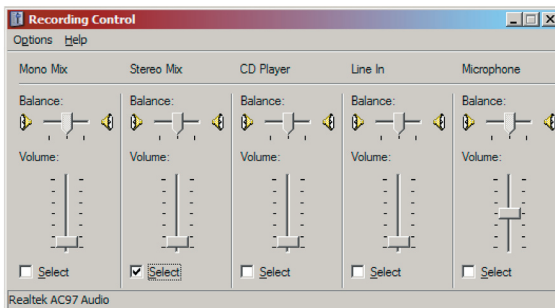


Using the audio function

4. Ensure that Mono Mix, Stereo Mix and/or Wave-out Mix are checked.

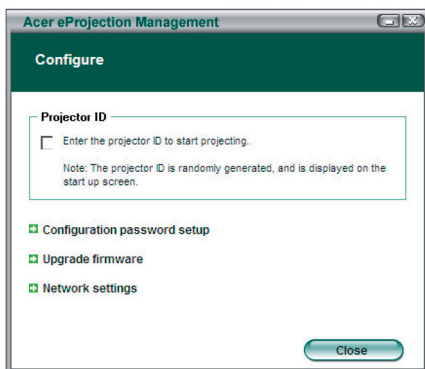


5. Click OK to open the "Recording Mix" window. Ensure that Mono Mix, Stereo Mix or Wave-out Mix is selected.



Configuring your Acer WPG

You will need to be connected to an Acer WPG to change any configuration settings. Once you're connected, click the Configure button in the upper right-hand corner of the Acer WPG screen.



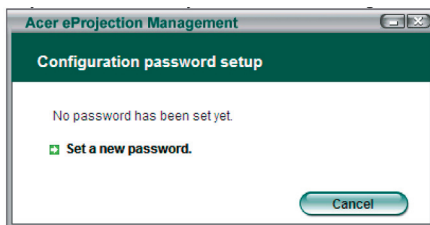
Projector ID

Check this feature to enable projector identification. If this option is enabled, a 4-digit number will be displayed when the projector is started up, or when the projector is not receiving any input.

Configuration password setup

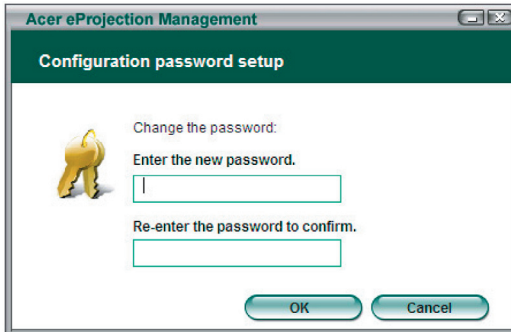
Use this to set a password to restrict access to the configuration menus. This is useful when the WPG is used by a number of people, and you do not wish unauthorized persons to make any changes to the configuration.

The first time you click on this link, you will see the following:

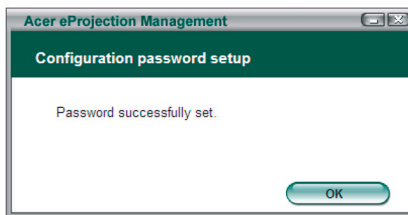


Configuring your Acer WPG

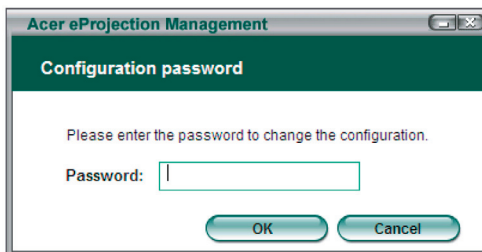
Click on **Set a new password** to set a password.



Enter the password — it can be up to 16 characters in length.

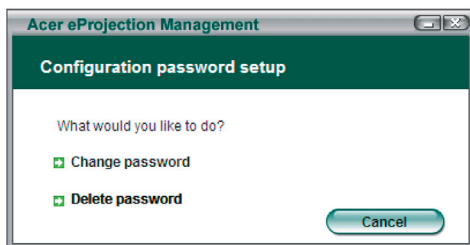


Once the password has been set, it needs to be entered before any changes can be made to the configuration of your Acer WPG.



Configuring your Acer WPG

You can also change or delete the password by clicking **Configuration password setup**.

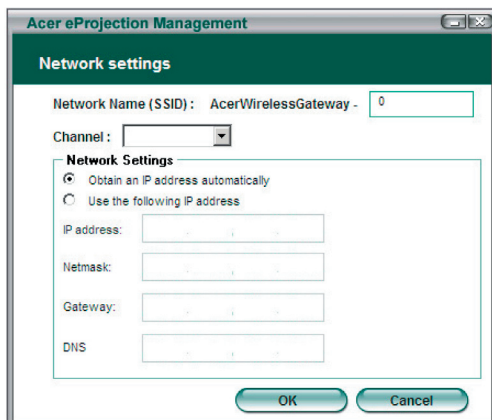


Upgrade firmware

Click on this link to check if there is any newer firmware available. You will need to be connected to a network with an open Internet connection to do this.

Network settings

Click on this link to change the network settings.



Here, you can set a customized SSID to identify the Acer WPG. You can also change the IP address — either set it to automatically obtain an IP address, or manually set a static IP address.

If necessary, you can set the RF channel used to connect with notebooks as well.

Projection controls

Use the projection controls to perform various functions.



Hide

This feature projects a blank screen, so that you can make changes to a document, or refer to confidential information as needed, without your audience being able to see it.

Freeze

This feature freezes the projected image, so that you can make changes to a document, or refer to confidential information as needed, without your audience being able to see it.

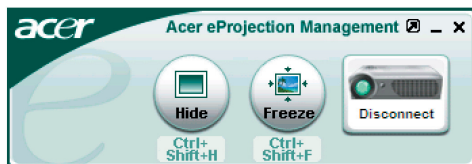
Projector remote control

Some Acer projectors support using the Acer WPG as a remote control device. You are able to carry out many of the same functions that the remote control allows you to perform, directly from your notebook.

Projection controls

Hotkey explanation

Click this button for a quick reminder of what the hotkey functions are.
<Ctrl> + <Shift> + <E> will toggle between full mode, and simplified mode:



Appendix A:

Regulation & safety notices

This appendix lists the general notices of your Acer Wireless Gateway.

FCC notice

This device has been tested and found to comply with the limits for a Class B digital device pursuant to Part 15 of the FCC rules. These limits are designed to provide reasonable protection against harmful interference in a residential installation. This device generates, uses, and can radiate radio frequency energy and, if not installed and used in accordance with the instructions, may cause harmful interference to radio communications.

However, there is no guarantee that interference will not occur in a particular installation. If this device does cause harmful interference to radio or television reception, which can be determined by turning the device off and on, the user is encouraged to try to correct the interference by one or more of the following measures:

- Reorient or relocate the receiving antenna.
- Increase the separation between the device and receiver.
- Connect the device into an outlet on a circuit different from that to which the receiver is connected.
- Consult the dealer or an experienced radio/television technician for help.

Notice: Shielded cables

All connections to other computing devices must be made using shielded cables to maintain compliance with FCC regulations.

Caution

Changes or modifications not expressly approved by the manufacturer could void the user's authority, which is granted by the Federal Communications Commission, to operate this computer.

Operation conditions

This device complies with Part 15 of the FCC Rules. Operation is subject to the following two conditions:

1. this device may not cause harmful interference, and
2. this device must accept any interference received, including interference that may cause undesired operation.

Appendix A: Regulation & safety notices

Notice: Canadian users

This Class B digital apparatus complies with Canadian ICES-003.

Remarque à l'intention des utilisateurs canadiens

Cet appareil numérique de la classe B est conforme à la norme NMB-003 du Canada.

Declaration of Conformity for EU countries

Hereby, Acer, declares that this Acer Wireless Gateway is in compliance with the essential requirements and other relevant provisions of Directive 1999/5/EC. (Please visit [http:// global.acer.com](http://global.acer.com).)

Compliant with Russian regulatory certification



ME61

Appendix A:

Regulation & safety notices

Important safety instructions

Read these instructions carefully. Save them for future reference.

1. Follow all warnings and instructions marked on the product.
2. Unplug this product from the wall outlet before cleaning. Do not use liquid cleaners or aerosol cleaners. Use a water-moistened cloth for cleaning.
3. Do not use this product near water.
4. Do not place this product on an unstable cart, stand or table. If the product falls, it could be seriously damaged.
5. This product should be operated from the type of power indicated on the marking label. If you are not sure of the type of power available, consult your dealer or local power company.
6. Do not allow anything to rest on the power cord. Do not locate this product where people will walk on the cord.
7. Never push objects of any kind into this product through cabinet slots as they may touch dangerous voltage points or short-out parts that could result in a fire or electric shock. Never spill liquid of any kind onto or into the product.
8. Do not attempt to service this product yourself, as opening or removing covers may expose you to dangerous voltage points or other risks. Refer all servicing to qualified service personnel.
9. Unplug this product from the wall outlet and refer servicing to qualified service personnel under the following conditions:
 - a. When the power cord or plug is damaged or frayed.
 - b. If liquid has been spilled into the product.
 - c. If the product has been exposed to rain or water.
 - d. If the product does not operate normally when the operating instructions are followed. Adjust only those controls that are covered by the operating instructions, since improper adjustment of other controls may result in damage and will often require extensive work by a qualified technician to restore the product to normal condition.
 - e. If the product has been dropped or the case has been damaged. If the product exhibits a distinct change in performance, indicating a need for service.
10. To avoid hazard of unexpected electrical shock, use the AC adapter only when the wall socket is properly grounded.

Appendix A:

Regulation & safety notices

Radio device regulatory notice

NOTE: Below regulatory information is for models with wireless LAN only.

General

This product complies with the radio frequency and safety standards of any country or region in which it has been approved for wireless use. Below information is for products with such devices.

European Union (EU)

This device complies with the essential requirements of the European Council Directives listed below:

73/23/EEC Low Voltage Directive

- EN 60950

89/336/EEC Electromagnetic Compatibility (EMC) Directive

- EN 55022
- EN 55024
- EN 61000-3-2/-3

99/5/EC Radio & Telecommunications Terminal Equipment (R&TTE) Directive

- Art.3.1a) EN 60950
- Art.3.1b) EN 301 489 -1/-17
- Art.3.2) EN 300 328-2

List of applicable countries

EU member states as of May 2004 are: Belgium, Denmark, Germany, Greece, Spain, France, Ireland, Italy, Luxembourg, the Netherlands, Austria, Portugal, Finland, Sweden, United Kingdom, Estonia, Latvia, Lithuania, Poland, Hungary, Czech Republic, Slovak Republic, Slovenia, Cyprus and Malta. Usage allowed in the countries of European Union, as well as Norway, Switzerland, Iceland and Liechtenstein. This device must be used in strict accordance with the regulations and constraints in the country of use. For further information, please contact local office in the country of use.

Appendix A:

Regulation & safety notices

The FCC RF safety requirement

The radiated output power of the wireless LAN Mini PCI Card is far below the FCC radio frequency exposure limits. Nevertheless, the Acer used in such a manner that the potential for human contact during normal operation shall be Acer Wireless Gateway is minimized as follows:

- An improper installation or unauthorized use may cause harmful interference to radio communications. Also any tampering of the internal antenna will void the FCC certification and your warranty.
- To comply with FCC RF exposure compliance requirements, a separation distance of at least 20 cm (8 inches) must be maintained between this device and any other antennas or transmitters.

Canada — Low-power license-exempt radio communication devices (RSS-210)

- a. Common information Operation is subject to the following two conditions:
 1. This device may not cause interference, and
 2. This device must accept any interference, including interference that may cause undesired operation of the device.
- b. Operation in 2.4 GHz band To prevent radio interference to the licensed service, this device is intended to be operated indoors and installed outdoors is subject to licensing.