

A Man With Unilateral Ocular Pain and Blindness

(See page 469–70 for the Answer to the Photo Quiz.)

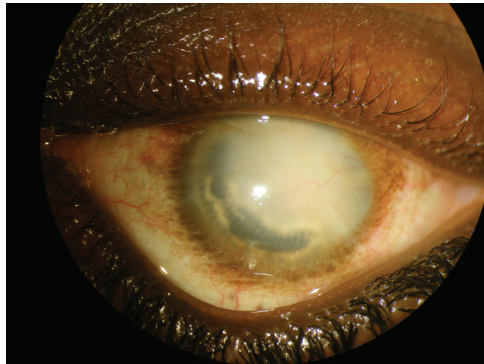


Figure 1. Slit lamp exam revealed the silhouette of a foreign body in the angle of the anterior chamber.

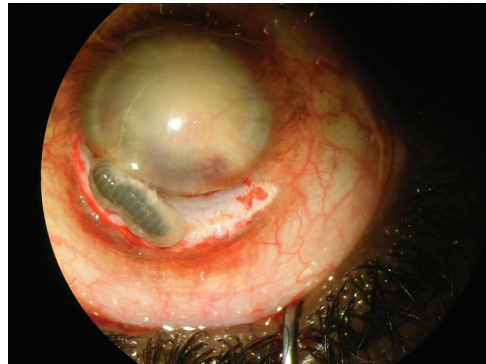


Figure 2. The parasite is shown crawling out of the eye following the incision.

A 25-year-old black man with unknown medical history presented at our ophthalmologic mobile outpatient clinic (District of Sankuru, East Kasai Province, Democratic Republic of Congo) with blindness and pain in his left eye. The examination showed a shrunken, nonfunctional left eye (phthisis bulbi), nonreactive to light, which, by slit lamp exam, revealed a large, blackish, crescent-shaped, worm-like foreign body wedged into the angle of the anterior chamber (Figure 1). Much to our surprise, the foreign body began a peristaltic motion upon physical stimulation of the eye. The patient was otherwise in good health and free of general symptoms. Physical findings were unremarkable; thus, no further diagnostic

tests were performed. The parasite was removed under local anesthesia, still alive and crawling (Figure 2). It was sent to the Hungarian Natural History Museum, Budapest, for further identification. The patient often consumed poorly cooked snakes. Despite the surgical procedure, the patient permanently lost vision in the left eye. What is your diagnosis?

Clinical Infectious Diseases 2013;57(3):418

© The Author 2013. Published by Oxford University Press on behalf of the Infectious Diseases Society of America. All rights reserved. For Permissions, please e-mail: journals.permissions@oup.com.

DOI: 10.1093/cid/cit309