



Isotype of *Grevillea callichlaena* Molyneux & Stajic [family PROTEACEAE]

<http://plants.jstor.org/specimen/ad169425>

<http://plants.jstor.org/>

Your use of the JSTOR archive indicates your acceptance of JSTOR's Terms and Conditions of Use, available at <http://www.jstor.org/page/info/about/policies/terms.jsp>. JSTOR's Terms and Conditions of Use provides, in part, that unless you have obtained prior permission, you may not download an entire issue of a journal or multiple copies of articles, and you may use content in the JSTOR archive only for your personal, non-commercial use.

Please contact the contributing partner regarding any further use of this work. Partner contact information may be obtained at <http://plants.jstor.org/action/community?page=partners>.

Each copy of any part of a JSTOR transmission must contain the same copyright notice that appears on the screen or printed page of such transmission.

JSTOR is a not-for-profit service that helps scholars, researchers, and students discover, use, and build upon a wide range of content in a trusted digital archive. We use information technology and tools to increase productivity and facilitate new forms of scholarship. For more information about JSTOR, please contact plants@jstor.org.

Isotype of *Grevillea callichlaena* Molyneux & Stajsic [family PROTEACEAE]

Herbarium

| | |
|--------------------|---|
| Collection | Herbarium Specimens |
| Resource Type | Specimens |
| Collector | Stajsic, V.; Molyneux, W.; Forrester, S.; Ashton, P.; Merkel, H., #3308 |
| Collection date | 2002/10/22 |
| Locality | Victoria: Alpine National Park,. 350 m WSW from summit of Mount Benambra, on W slope below track, near track edge 36.509°S, 147.57°E |
| Country | Australia |
| Identifications | Isotype of <i>Grevillea callichlaena</i> Molyneux & Stajsic [family PROTEACEAE] (stored under name); Verified by V. Stajsic & W. Molyneux, 2002/10/29 |
| Pages | 1 |
| Data last modified | 2013-10-17 |

<http://plants.jstor.org/specimen/ad169425>

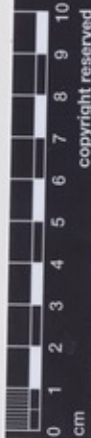


AD169425

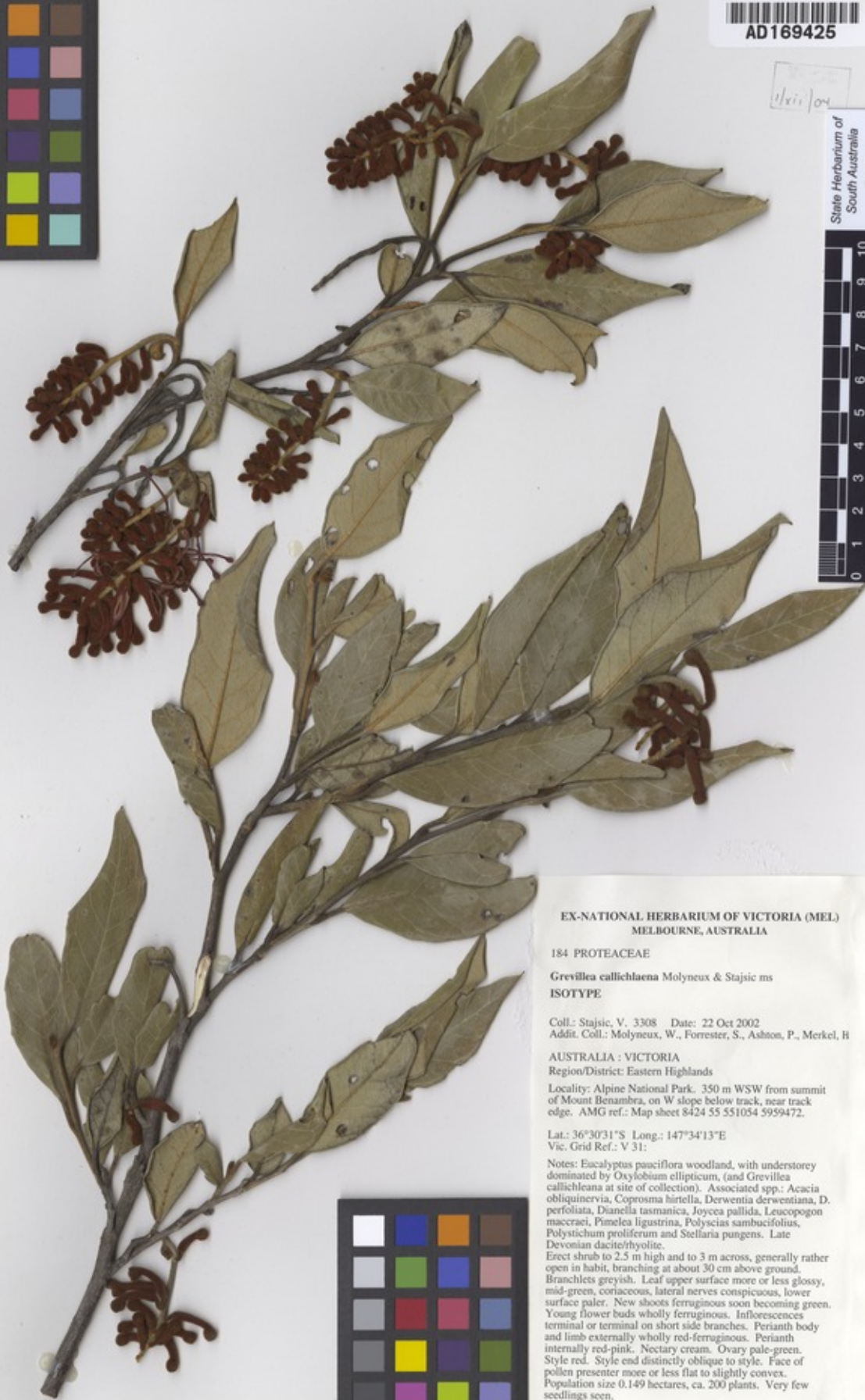
11/vii/04

State Herbarium of
South Australia

AD



copyright reserved

EX-NATIONAL HERBARIUM OF VICTORIA (MEL)
MELBOURNE, AUSTRALIA

184 PROTEACEAE

Grevillea callichlaena Molyneux & Stajsic ms
ISOTYPEColl.: Stajsic, V. 3308 Date: 22 Oct 2002
Addit. Coll.: Molyneux, W., Forrester, S., Ashton, P., Merkel, HAUSTRALIA: VICTORIA
Region/District: Eastern HighlandsLocality: Alpine National Park. 350 m WSW from summit
of Mount Benambra, on W slope below track, near track
edge. AMG ref.: Map sheet 8424 55 551054 5959472.Lat.: 36°30'31"S Long.: 147°34'13"E
Vic. Grid Ref.: V 31:Notes: Eucalyptus pauciflora woodland, with understorey
dominated by Oxylobium ellipticum, (and Grevillea
callichlaena at site of collection). Associated spp.: Acacia
obliquinervis, Coprosma hirtella, Derwentia derwentiana, D.
perfoliata, Dianella tasmanica, Joycea pallida, Leucopogon
maccraei, Pimelea ligustrina, Polyscias sambucifolius,
Polystichum proliferum and Stellaria pungens. Late
Devonian dacite/rhyolite.Erect shrub to 2.5 m high and to 3 m across, generally rather
open in habit, branching at about 30 cm above ground.
Branchlets greyish. Leaf upper surface more or less glossy,
mid-green, coriaceous, lateral nerves conspicuous, lower
surface paler. New shoots ferruginous soon becoming green.
Young flower buds wholly ferruginous. Inflorescences
terminal or terminal on short side branches. Perianth body
and limb externally wholly red-ferruginous. Perianth
internally red-pink. Nectary cream. Ovary pale-green.
Style red. Style end distinctly oblique to style. Face of
pollen presenter more or less flat to slightly convex.
Population size 0.149 hectares, ca. 200 plants. Very few
seedlings seen.

Det.: Stajsic, V., Molyneux, W. 29 Oct 2002

Dups: AD, BRI, CANB, HO, NSW, K, NY, WELT

This is a duplicate of MEL 2190704.



copyright reserved

AD

State Herbarium of
South Australia