



**Isotype of *Elatostema parvum* (Blume) Miq.  
[family URTICACEAE]**

<http://plants.jstor.org/specimen/bm000508579>

<http://www.jstor.org>

---

Your use of the JSTOR archive indicates your acceptance of JSTOR's Terms and Conditions of Use, available at <http://www.jstor.org/page/info/about/policies/terms.jsp>. JSTOR's Terms and Conditions of Use provides, in part, that unless you have obtained prior permission, you may not download an entire issue of a journal or multiple copies of articles, and you may use content in the JSTOR archive only for your personal, non-commercial use.

Please contact the contributing partner regarding any further use of this work. Partner contact information may be obtained at <http://plants.jstor.org/page/about/plants/PlantsProject.jsp>.

Each copy of any part of a JSTOR transmission must contain the same copyright notice that appears on the screen or printed page of such transmission.

---

JSTOR is a not-for-profit service that helps scholars, researchers, and students discover, use, and build upon a wide range of content in a trusted digital archive. We use information technology and tools to increase productivity and facilitate new forms of scholarship. For more information about JSTOR, please contact [plants@jstor.org](mailto:plants@jstor.org).

## Isotype of *Elatostema parvum* (Blume) Miq. [family URTICACEAE]

Herbarium

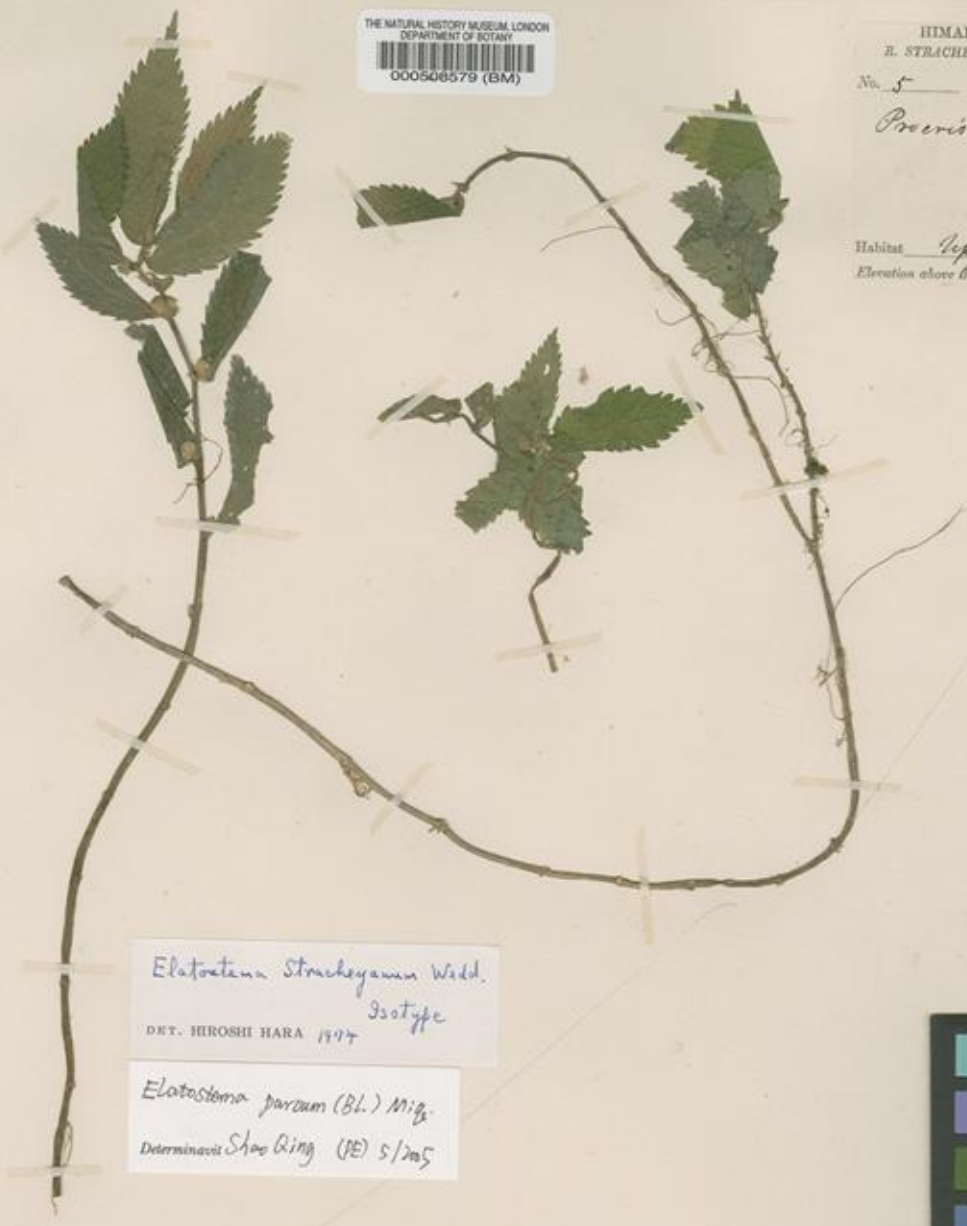
Collection	Type Specimens
Resource Type	Specimens
Collector	Strachey, R & Winterbottom, J.E., #5
Locality	Upper Tola. Kumaon.
Country	India (India)
Identifications	Isotype of <i>Elatostema parvum</i> (Blume) Miq. [family URTICACEAE] (stored under name); Verified by Shao-Q. Cai, 2005-05-Isotype of <i>Elatostema stracheyanum</i> Wedd. [family URTICACEAE]; Verified by Hiroshi Hara, 1974
Pages	1
Data last modified	2009-01-27

<http://plants.jstor.org/specimen/bm000508579>

THE NATURAL HISTORY MUSEUM, LONDON  
DEPARTMENT OF BOTANY  
000508579 (BM)

HIMALAYAN HERBARIUM,  
R. STRACHEY and J. E. WINTERBOTTOM.  
No. 5  
*Procris*

Habitat *Upper Tala* Kumaon.  
Elevation above the Sea *6400* Feet.



*Elatostema stracheyanum* Wedd.  
Isotype  
DET. HIROSHI HARA 1977

*Elatostema parvum* (Bl.) Mig.  
Determined Shoo Qing (PE) 5/2005



11003187  
1 \*