



Isotype of *Grewia caudata* Wall. [family STERCULIACEAE]

<http://plants.jstor.org/specimen/bm000630557>

<http://www.jstor.org>

Your use of the JSTOR archive indicates your acceptance of JSTOR's Terms and Conditions of Use, available at <http://www.jstor.org/page/info/about/policies/terms.jsp>. JSTOR's Terms and Conditions of Use provides, in part, that unless you have obtained prior permission, you may not download an entire issue of a journal or multiple copies of articles, and you may use content in the JSTOR archive only for your personal, non-commercial use.

Please contact the contributing partner regarding any further use of this work. Partner contact information may be obtained at <http://plants.jstor.org/page/about/plants/PlantsProject.jsp>.

Each copy of any part of a JSTOR transmission must contain the same copyright notice that appears on the screen or printed page of such transmission.

JSTOR is a not-for-profit service that helps scholars, researchers, and students discover, use, and build upon a wide range of content in a trusted digital archive. We use information technology and tools to increase productivity and facilitate new forms of scholarship. For more information about JSTOR, please contact plants@jstor.org.

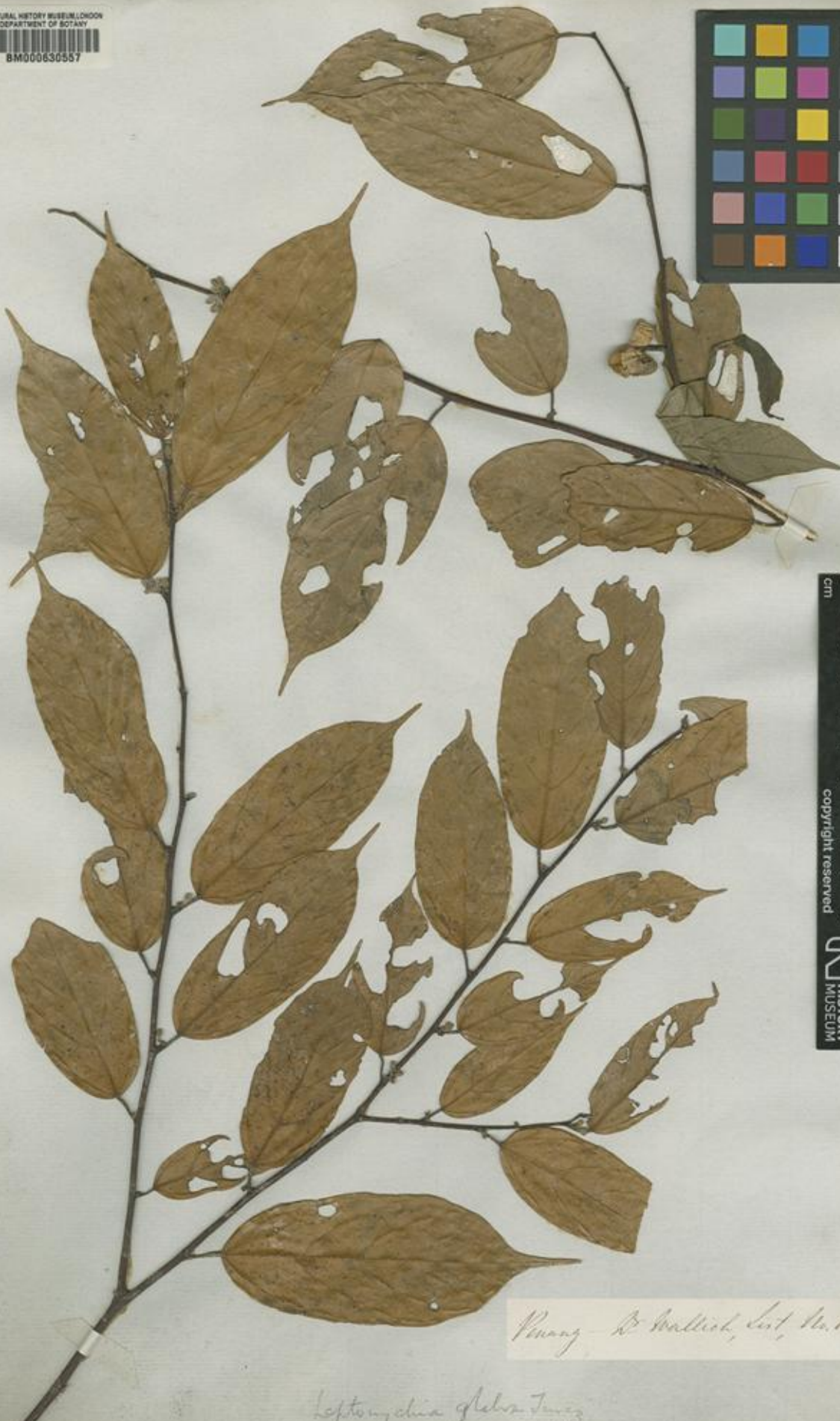
Isotype of *Grewia caudata* Wall. [family STERCULIACEAE]

Herbarium

Collection	Type Specimens
Resource Type	Specimens
Collector	N. Wallich, #1099
Country	Malaysia (Malaysia)
Identifications	Isotype of <i>Grewia caudata</i> Wall. [family STERCULIACEAE]; <i>Leptonychia caudata</i> Burret [family STERCULIACEAE] (stored under name);
Pages	1
Data last modified	2009-04-02

<http://plants.jstor.org/specimen/bm000630557>

THE NATURAL HISTORY MUSEUM, LONDON
DEPARTMENT OF BOTANY
BM000630557



copyright reserved



Penang - Dr. Wallich, List, No. 1099

Leptomychia glabra Tring