



**Isotype of *Pituranthos thomsonii* C.B.Clarke  
[family APIACEAE]**

<http://plants.jstor.org/specimen/bm000885327>

<http://plants.jstor.org/>

---

Your use of the JSTOR archive indicates your acceptance of JSTOR's Terms and Conditions of Use, available at <http://www.jstor.org/page/info/about/policies/terms.jsp>. JSTOR's Terms and Conditions of Use provides, in part, that unless you have obtained prior permission, you may not download an entire issue of a journal or multiple copies of articles, and you may use content in the JSTOR archive only for your personal, non-commercial use.

Please contact the contributing partner regarding any further use of this work. Partner contact information may be obtained at <http://plants.jstor.org/action/community?page=partners>.

Each copy of any part of a JSTOR transmission must contain the same copyright notice that appears on the screen or printed page of such transmission.

---

JSTOR is a not-for-profit service that helps scholars, researchers, and students discover, use, and build upon a wide range of content in a trusted digital archive. We use information technology and tools to increase productivity and facilitate new forms of scholarship. For more information about JSTOR, please contact [plants@jstor.org](mailto:plants@jstor.org).

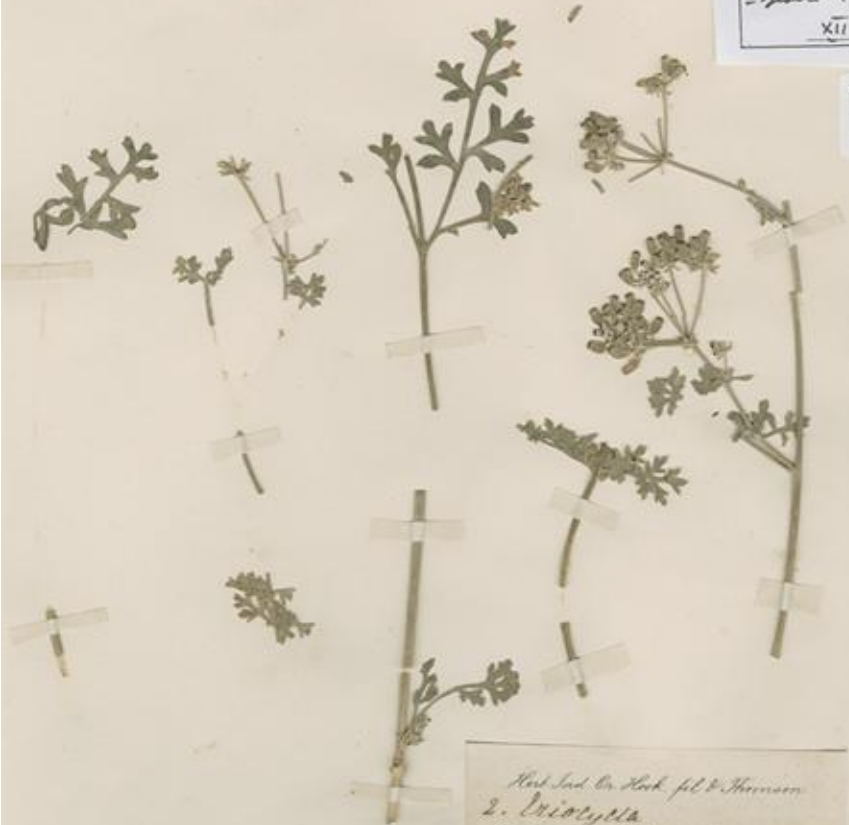
## Isotype of *Pituranthos thomsonii* C.B.Clarke [family APIACEAE]

Herbarium

Collection	Type Specimens
Resource Type	Specimens
Collector	T. Thomson, #2
Locality	Piti.
Country	China (China)
Identifications	Isotype of <i>Pituranthos thomsonii</i> C.B.Clarke [family APIACEAE]; <i>Seseli thomsonii</i> (C.B.Clarke) Pimenov & Kljuykov [family APIACEAE] (stored under name);
Pages	1
Data last modified	2008-10-15

<http://plants.jstor.org/specimen/bm000885327>

1506999 UMBELLIFERAE  
*Pteranthes thomsoni*: C. O. Clarke  
~~*Ejeseli thomsoni*: (C. O. Clarke) Pimenov & Kojanov~~  
 XII 2005 Determ. M.G. Pimenov



Herb. Ind. on Herb. fil. & Thomson  
 2. *Dicentra*  
 Herb. Ind. on Herb. fil. - Royal Bot. Soc.  
 alt. 10-12, 000 feet. Col. J.F.

*Pteranthes thomsoni* Clarke  
*Eucycla*

