



**Type of *Xanthosoma riedelianum* (Schott) Schott
var. *brancoanum* Engl. [family ARACEAE]**

<http://plants.jstor.org/specimen/f0bn012316>

<http://www.jstor.org>

Your use of the JSTOR archive indicates your acceptance of JSTOR's Terms and Conditions of Use, available at <http://www.jstor.org/page/info/about/policies/terms.jsp>. JSTOR's Terms and Conditions of Use provides, in part, that unless you have obtained prior permission, you may not download an entire issue of a journal or multiple copies of articles, and you may use content in the JSTOR archive only for your personal, non-commercial use.

Please contact the contributing partner regarding any further use of this work. Partner contact information may be obtained at <http://plants.jstor.org/page/about/plants/PlantsProject.jsp>.

Each copy of any part of a JSTOR transmission must contain the same copyright notice that appears on the screen or printed page of such transmission.

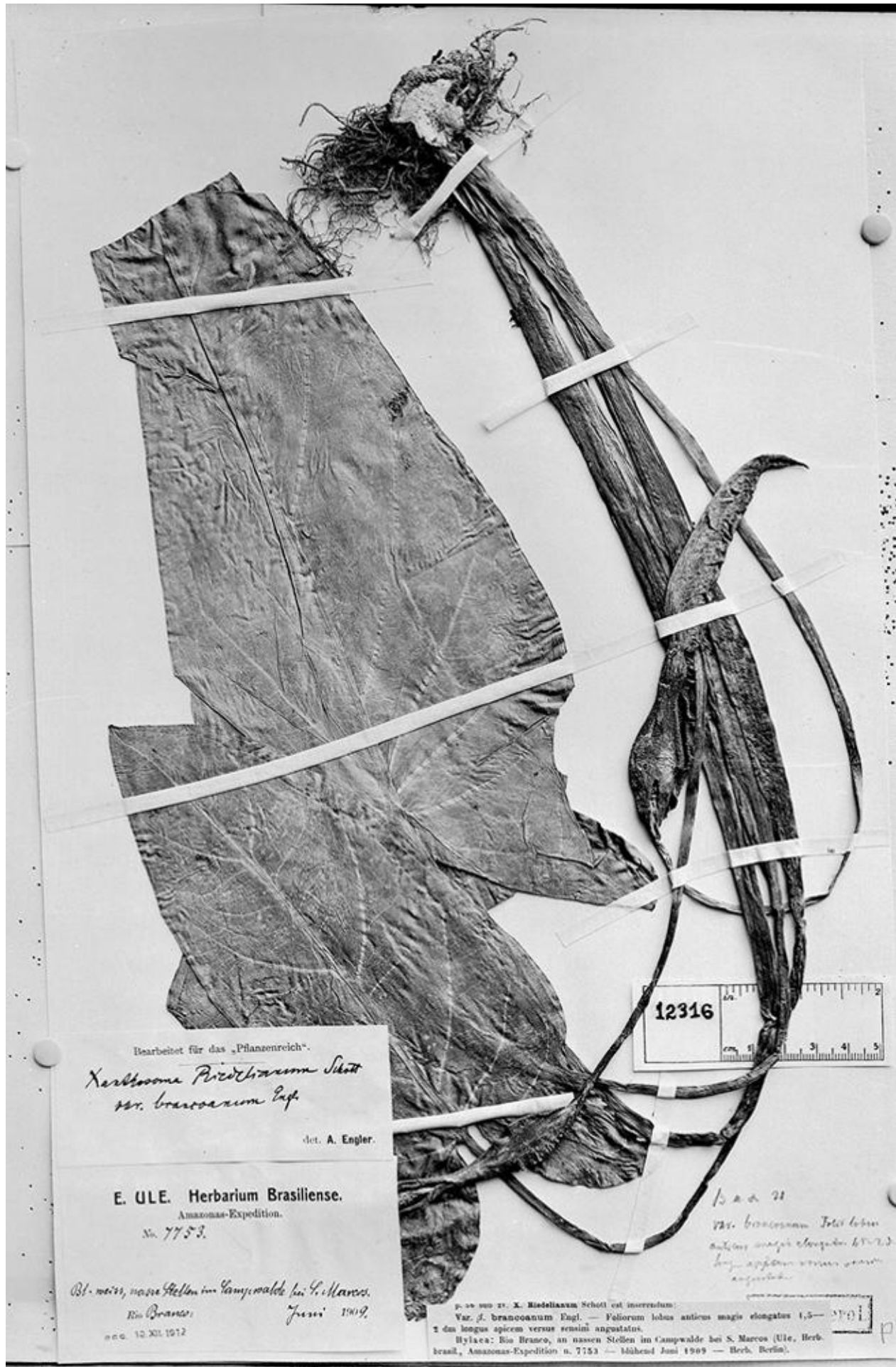
JSTOR is a not-for-profit service that helps scholars, researchers, and students discover, use, and build upon a wide range of content in a trusted digital archive. We use information technology and tools to increase productivity and facilitate new forms of scholarship. For more information about JSTOR, please contact plants@jstor.org.

Type of *Xanthosoma riedelianum* (Schott) Schott var. *brancoanum* Engl. [family ARACEAE]

Herbarium

Collection	Type Specimens
Resource Type	Specimens
Collector	E. H. G. Ule, #7753
Collection date	1909/6
Country	Brazil (Brazil)
Identifications	Type of <i>Xanthosoma riedelianum</i> (Schott) Schott var. <i>brancoanum</i> Engl. [family ARACEAE] (stored under name);
Pages	1
Data last modified	2010-10-22

<http://plants.jstor.org/specimen/f0bn012316>



12316



Bearbeitet für das „Pflanzenreich“.

Xerolobos Pteridaceum Schott
var. bruceorum Engl.

det. A. Engler.

E. ULE. Herbarium Brasiliense.

Amazonas-Expedition.

Nr. 7753.

Bl. weiss, nasse Stellen im Campwald bei S. Marcos.

Rio Branco:

Juni 1909.

acc. 12. XII. 1912

12316 21

var. bruceorum Schott lobis
anterioribus magis elongatis 1,5-2,0
long. apertis versus sensim
angustatis.

p. 22 sub n. X. Hiedelianum Schott est interstitum:
Var. *f. bruceorum* Engl. — Foliorum lobus anterior magis elongatus 1,5-2,0
? du longus apicem versus sensim angustatus.
Hylaea: Rio Branco, an nassen Stellen im Campwald bei S. Marcos (Ule, Herb. Brasil, Amazonas-Expedition n. 7753 — während Juni 1909 — Herb. Berlin).