

**Plant types of Sándor Jávorka  
in the Hungarian Natural History Museum in Budapest II.**

D. KOVÁTS

*Department of Botany, Hungarian Natural History Museum  
H-1087 Budapest, Könyves Kálmán krt. 40, Hungary  
e-mail: dezso@bot.nhmus.hu*

KOVÁTS, D. (1999): Plant types of Sándor Jávorka in the Hungarian Natural History Museum in Budapest (BP) II. – *Annls hist.-nat. Mus. natn. hung.* **91**: 45–60.

**Abstract** – 27 types from 17 taxa of SÁNDOR JÁVORKA, i. e. 2 holotypes, 5 isotypes, 10 lectotypes, 6 isolectotypes and 4 neotypes are elaborated, which are deposited in the Herbarium Carpato-Pannonicum, Herbarium Kitaibelianum and in the Herbarium Generale in the Department of Botany, Hungarian Natural History Museum in Budapest (BP). With 11 figures.

INTRODUCTION

The Department of Botany, Hungarian Natural History Museum houses two big herbaria of flowering plants. One is the Herbarium Carpato-Pannonicum (more than 600 thousand sheets) comprising flowering plants from the Carpato-Pannonian area. The other one is the Herbarium Generale (more than 700 thousand sheets) consist of flowering plants from the whole world. So in the Botanical Department we have more than 1 million and 300 thousand sheets. These herbaria are the biggest in Hungary and important in Europe as well. Most of the original and type materials of the Hungarian botanists may be found in these herbaria, but the majority of the types were not designated. Research work, elaborations and publications of types started 24 years ago (KOVÁTS 1975) in the Herbarium Carpato-Pannonicum and continued with interruptions until now (KOVÁTS 1982, 1984, 1992, 1998). The knowledge of original and type materials is very important especially today when the taxonomical elaborations and revisions are booming again. So it is much welcome and useful thing that an other colleague from the staff joined in this work and started to elaborate the types in our herbaria (SOMLYAY 1997, 1998).

In this paper the author continues to discuss the type specimens of SÁNDOR JÁVORKA which are deposited in the Herbarium Carpato-Pannonicum and in the Herbarium Generale in the Department of Botany, Hungarian Natural History Museum in Budapest (KOVÁTS 1998). This paper enumerates 27 types of 17 taxa, namely 8 species, 4 subspecies, 3 varietas, 2 forma. This material includes 2 holotypes, 5 isotypes, 10 lectotypes, 6 isolectotypes (syntypes), 4 neotypes of JÁVORKA. He described those taxa alone, or in

co-authorship with J. ANDRASOVSKY, A. DEGEN, N. FILARSZKY, J. B. KÜMMERLE or I. K. URUMOV. The types are from 7 families: Rosaceae, Labiatae (Lamiaceae), Scrophulariaceae, Plantaginaceae, Papaveraceae, Cruciferae (Brassicaceae), Campanulaceae. The loci classici of 2 types are in Hungary, 3 types in Transylvania (Rumania), 3 types in Bulgaria, 7 types in Albania and 2 types in the islands of Greece. These types are deposited in the Herbarium Carpato-Pannonicum, Herbarium Kitaibelianum and in the Herbarium Generale in the Department of Botany, Hungarian Natural History Museum, Budapest (BP).

## ROSACEAE

### *Sanguisorba albanica* ANDRASOVSKY et JÁVORKA, 1926

*Lectotype* – Protologue: JÁVORKA (1921: 23), CSIKI *et al.* (1926: 263–264). On the original label with JÁVORKA's handwriting: "Sanguisorba albanica Andras. et Jáv." "duplum" had been crossed out

*Locus* – "Montes Albaniae borealis ad occidentem opp. Djakova extensi:" with JÁVORKA's handwriting: "in herbidis et dumetis collium serpentinicorum in jugo "Cafa Morins" et ad rivum Tropoja infra pag. Tropoja. Alt ca. 400–600 m."

*Data* – With JÁVORKA's handwriting: "21. Aug. 4–9 Sept. 1918" "leg. Dr. S. Jávorka".

*Collection* – "Iter Albanicum Per Sectionem Botanicam Musei Nationalis Hungarici Susceptum" On the sheet is an other typewritten label with the same text. DALLA TORRE and HARMS' number: 3381, inventory number: 481844.

The specimens on the sheet, which was designated as the lectotype, consist of two leafy plants without roots, one of them has flowers, the other is broken on the top.

## LAMIACEAE (LABIATAE)

### *Satureja patavina* (JACQUEN) DEGEN ssp. *elatior* (GRISEBACH) JÁVORKA, 1925

*Neotype* – Protologue: JÁVORKA (1925: 884) On the original label: "Satureja patavina (Jacq.) Deg. ssp. elatior (Griseb.) Jáv."

*Locus* – "Hunyad m." (cottus Hunyad) "Déva".

*Data* – "1932. VI. 19" (19.06.1932), "Csapody Vera" (leg. et det. VERA CSAPODY).

*Collection* – "Herbar. Musei Nat. Hungar. Budapest, Flora Hungarica". DALLA TORRE and HARMS' number: 7305, inventory number: 145256, collector's number: 404.

The specimens on the sheet, which was designated as the neotype, consist of eight leafy stems with flowers and fruits.

*Thymus lycae* DEGEN et JÁVORKA, 1922  
(Figs 1–3)

*Holotype* – according to J. JALAS 1970 – Protologue: JÁVORKA (1922b: 18–19) On the original label: “*Thymus Lycae* Deg. et Jáv. n. sp.” (corrected most probably by JÁVORKA) (Fig. 1).

*Locus* – “Montes Albaniae borealis ad occidentem opp. Djakova extensi: in saxosis serpentinicis in jugi “Cafa Morins” versus pag. Tropoja alt. ca. 450 m.” (Fig. 1).

*Data* – “20. Aug. 1918” printed: “leg. Dr. S. Jávorka” (Fig. 1). On JAAKKO JALAS’ label with his handwriting: “Holotype of *Thymus Lycae* Degen et Jáv. in Jávorka Mag. Bot. Lapok 21: 18 (1922) = *T. longicaulis* Presl. sel. and det. by Jaakko Jalas 1970 University of Helsinki, Finland” (Fig. 2).

*Collection* – “Iter Albanicum Per Sectionem Botanicam Musei Nationalis Hungarici Susceptum” DALLA TORRE and HARMS’ number: 7319, inventory number: 336532, collector’s number: 151.

The specimens on the sheet, which was designated as the holotype, consist of several leafy stems and two bags with fragments (Fig. 3).

1  
ITER ALBANICUM PER SECTIONEM BOTANICAM  
MUSEI NATIONALIS HUNGARICI SUSCEPTUM.

*Thymus* <sup>borealis</sup> *Jávorkae* <sup>et Jáv.</sup> *deg.* (n. sp.)  
*Lycae*

Montes Albaniae borealis ad occidentem opp. Djakova extensi: in saxosis serpentinicis in jugo “Cafa Morins” versus pag. Tropoja

20 Aug. 1918. leg. Dr. S. Jávorka

2

Holo TYPE

of *Thymus Lycae* Degen & Jáv.  
in Jávorka Mag. Bot. Lapok  
21: 18 (1922)

= *T. longicaulis* Presl, f.

sel. and det. by JAAKKO JALAS 1970

(publ. in University of Helsinki, Finland)

Figs 1–2. 1 = The original label of *Thymus lycae* DEGEN et JÁVORKA (corrected most probably by JÁVORKA), 2 = the holotype label of JAAKKO JALAS with his handwriting

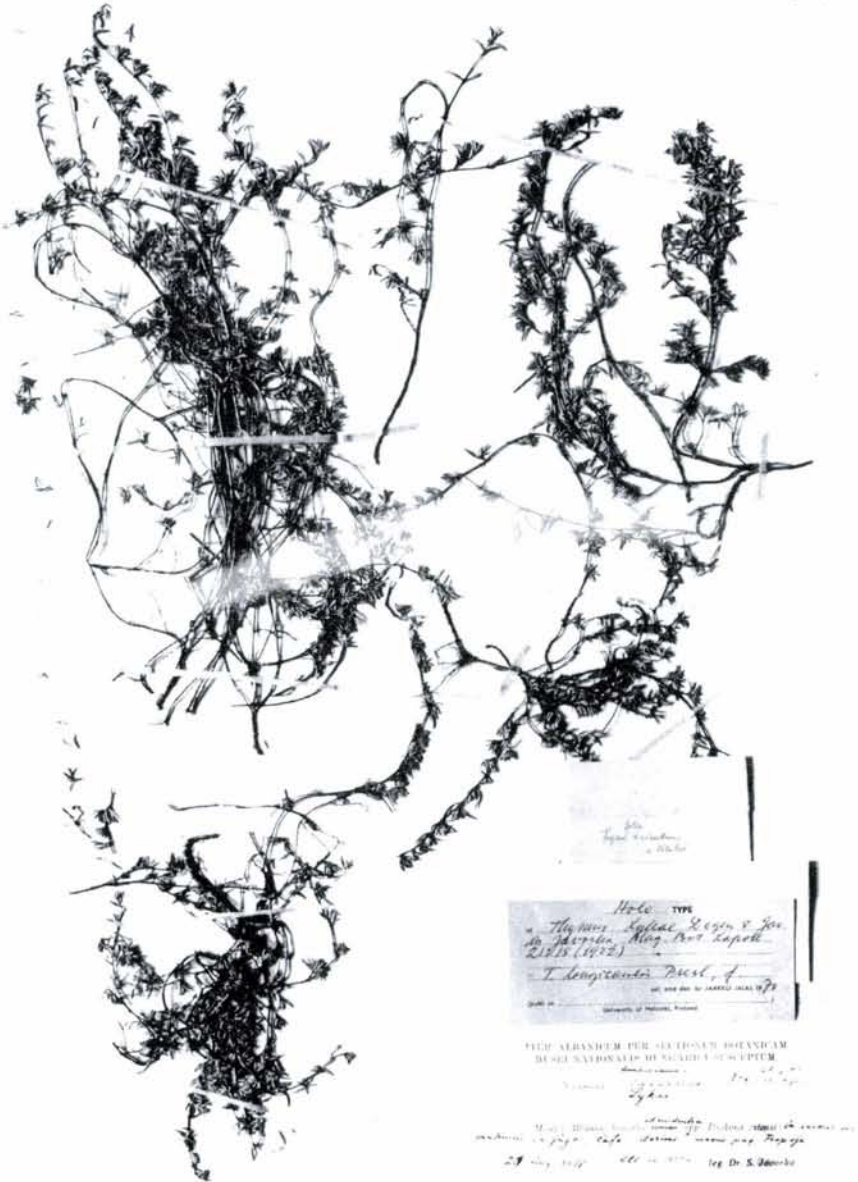


Fig. 3. *Thymus lycae* DEGEN et JÁVORKA, holotype

## SCROPHULARIACEAE

*Verbascum stojanovi* JÁVORKA, 1937

*Lectotype* – Protologue: JÁVORKA (1937: 119). On the original label with JÁVORKA's handwriting: "Verbascum Hinkei Friv. x longifolium Ten. = Stojanovii Jáv. hybr. nova. inter parentes I.", added with pencil: "nondum publicata".

*Locus* – With JÁVORKA's handwriting: "Bulgaria: in herbis ad limites silvae superiores sub cataractis rivi (olim Ak-dere dicti) in latere merid. m. Jumrukcal (Ferdinando) alpin Balkan centralis supra pag. Kalofer. alt. ca. 1600–1700 m."

*Data* – With JÁVORKA's handwriting: "13. VI. 1929. S. Jávorka". On a label: "B. Stefanova 1972".

*Collection* – Herbar. Musei Nat. Hungar. Budapest. DALLA TORRE and HARMS' number: 7460, inventory number: 341949, collector's number: 151.

The specimens on the sheet, which was designated as lectotype, consist of a leafy stock with buds and two separated leaves.

*Isolectotype* – On the original label with JÁVORKA's handwriting: "Verbascum Hinkei Friv. x longifolium Ten. = Stijanovii Jáv. hybr. nova II.

*Locus* – With JÁVORKA's handwriting: "Bulgaria: ad cataractas rivi (olim Ak-dere dicti) in latere merid. m. Jumrukcal supra pag. Kalofer."

*Data* – With JÁVORKA's handwriting: "13. VI. 1929. S. Jávorka".

*Collection* – Same as lectotype. DALLA TORRE and HARMS' number: 7460, inventory number: 341950, collector's number: 151.

The specimens on the sheet, which was designated as isolectotype, consist of two leaves.

## PLANTAGINACEAE

*Plantago gentianoides* SMITH var. *piriniaca* URUMOV et JÁVORKA, 1920

*Lectotype* – Protologue: URUMOV (1920: 39). On the original label: "Plantago gentianoides Sm. var. pirinica Urum. et Jáv. foliis densiuscule ac breviter articulato-pilosia".

*Locus* – "In m. Pirin".

*Data* – "1915 legi Jv. K. Urumov."

*Collection* – "Jv. K. Urumov, plantae Bulgariae exsiccatae. 317". DALLA TORRE and HARMS' number: 8116, inventory number: 369549.

The specimens on the sheet, which was designated as the lectotype, consist of a leafy plant with flowers and a leafy stock (basal leaves) without flowers.

## PAPAVERACEAE

*Papaver pyreniacum* (LINNAEUS) KERNER  
ssp. *degenii* URUMOV et JÁVORKA, 1920

*Neotype* - Protologue: URUMOV (1920: 33). On the original label: "Papaver pyreniacum (L.) Kern. ssp. nova: pirinicum Urum. et Jáv."

*Locus* - "In m. Pirin".

*Data* - "1915 legi Jv. K. Urumov". On NYÁRÁDI's revision label: "ssp. rhaetica var. Degenii rev. Antonius Nyárády 1942". On the author's label: "Papaver pyreniacum (L.) Kern. ssp. degenii Urum. et Jáv."

*Collection* - "Jv. K. Urumov, plantae Bulgariae exsiccatae." DALLA TORRE and HARMS' number: 2853, inventory number: 133046, collector's number: 258.

The specimens on the sheet, which was designated as the neotype, consist of three leafy plants with flowers and buds.

## BRASSICACEAE (CRUCIFERAE)

*Lunaria telekiana* JÁVORKA, 1920

*Neotype* - Protologue: JÁVORKA (1920: 1-2). On the label with handwriting: "Lunaria telekiana Jáv."

*Locus* - With handwriting: "Albania borealis, tractus alpinum borealium Albaniae: in saxosis silvaticis ad faucem vallis Valbona prope pag. Bajram Curri (Rolgecaj), alt. ca. 500 m."

*Data* - With handwriting: "30. Jun. 1955. S. Jávorka J. Ujhelyi".

*Collection* - Herbarium Musei Nat. Hungar. Budapest. "DALLA TORRE and HARMS' number: 2969 - inventory number: 712782

The specimen on the sheet, which was designated as the neotype, consists of an upper part of a plant with leaves flowers and fruits.

*Thlaspi microphyllum* BOISSIER et HELDREICH  
ssp. *creticum* DEGEN et JÁVORKA, 1922

*Neotype* - Protologue: JÁVORKA (1922c: 25). On the original label: "Thlaspi microphyllum Boiss. et Orph. var. creticum Jáv."

*Locus* - "Ins. Creta Graeciae: Mons Psiloriti (Ida)?"

*Data* - "VI. 1906. leg. L. Biró".

*Collection* - "Herbar. Musei Nat. Hungar. Budapest.". DALLA TORRE and HARMS' number: 2903, inventory number: 138072, collector's number: 376.

The specimens on the sheet, which was designated as the neotype, consist of 26 leafy plants with flowers.

*Alyssum conglobatum* FILARSZKY et JÁVORKA, 1910  
(Figs 4–8)

*Lectotype* – “Typus” according to T. R. DUDLEY 1981 – Protologue: JÁVORKA (1910b: 146–147). On the original label: “*Alyssum conglobatum* Filarszky et Jávorka II.” (Fig. 4).

*Locus* – “In scrobiculis virgultarum satorum cacuminis montis Gr. Heuberg ad p. Szentivány, comit. Pest.” (Fig. 4).

*Data* – “909. VI. 9.” (09.06.1909) (Fig. 4). On T.R. DUDLEY’s label with his handwriting: “TYPUS *Alyssum conglobatum* Fil. & Jáv.”, printed: “det. T.R.Dudley 1981 U.S. National Arboretum, Washington, D.C.” (Fig. 5). On T.R. DUDLEY’s revision label: “*Alyssum alyssoides* var. *depressum* (Schur) Dudley (syn. = *A. conglobatum* Fil. & Jáv.) det. T.R.Dudley U.S. National Arboretum, Washington, D.C.” (Fig. 6). On the author’s label: “Lectotypus D. Kováts 1998” (Fig. 7).

*Collection* – “Herbar. Musei Nat. Hungar. Budapest. Flora Hungarica”. DALLA TORRE and HARMS’ number: 3006, inventory number: 74798, collector’s number: 75. On the sheet there is a stamp – “Magyar Nemzeti Múzeum Növénytani Osztálya, Budapest” [Department of Botany, Hungarian National Museum, Budapest].

The specimens on the sheet, which was designated as the lectotype, consist of 21 plants with leaves, roots and inflorescences (flowers and fruits) (Fig. 8).

*Isolectotype* – The text on the original label is the same as on the lectotype only it was signed: “I.”

*Collection* – Same as lectotype. DALLA TORRE and HARMS’ number: 3006, inventory number: 74800, collector’s number: 75. On the sheet there is the same stamp as on the lectotype.

The specimen on the sheet, which was designated as the isolectotype, consists of 12 plants with leaves, roots and inflorescences (flowers and fruits).

*Draba lacaitae* BOISSIER var. *albanica* KÜMMERLE et JÁVORKA, 1926

*Lectotype* – Protologue: CSIKI *et al.* (1926: 248). On the original label with JÁVORKA’s handwriting: “*Draba Lacaitae* Boiss. f. *albanica* Kümm. et Jáv.” Someone crossed out “*Lacaitae* Boiss.” and wrote: “*compacta* Schott. N. et Ky.” and after f. *albanica*: “an species nova?” with pencil.

*Locus* – Printed: “Montes Albaniae boreali-orientalis inter opp. Prizren et Debra jacentes:” and after with KÜMMERLE’s handwriting: “montes nivales Korab, in saxosis mobilibus declivium meridionalium cacuminis altissimi alterius supra dolinam maximam superemam ad pagum Radomir; altit.cca. 2800 m. s. m.; solo calcareo”.

*Data* – With KÜMMERLE’s handwriting: “VII.25.1918”, printed: “leg. Dr. J. B. Kümmerle”.

*Collection* – Iter Albanicum Per Sectionem Botanicam Musei Nationalis Hungarici Susceptum“. DALLA TORRE and HARMS’ number: 2989, inventory number: 201355, collector’s number: 91.

4 HERBAR. MUSEI NAT. HUNGAR. BUDAPEST.  
FLORA HUNGARICA

11.

*Alyssum conglobatum* Filarszky et Jávorka  
In scrobiculis virgultorum saturni cacuminis montis Gr.  
Hlenberg ad p. Szentiványi, comit. Pest.

209 27/9

1. Filarszky et Kümmerle

5


  
 det. T.R. Dudley  
 U.S. NATIONAL ARBORETUM HERBARIUM, WASHINGTON, D.C.

6

*Alyssum alyssoides* var. *depressum* (Schur),  
Dudley (syn. = *A. conglobatum* Fil. & Jav.)

det. T.R. Dudley

1981

U.S. NATIONAL ARBORETUM HERBARIUM, WASHINGTON, D.C.

7

HERBARIUM MUSEI HIST. NAT. HUNG. BUDAPEST  
Flora Hungarica

Lectotypus D. Kováts  
1998.

**Figs 4–7.** 4 = the original label of *Alyssum conglobatum* FILARSZKY et JÁVORKA, 5 = the type label of T. R. DUDLEY, 6 = the revision label of T. R. DUDLEY, 7 = the lectotype label of the author





Fig. 8. *Alyssum conglobatum* FILARSZKY et JÁVORKA, lectotype

The specimens on the sheet, which was designated as the lectotype, consist of 21 leafy plants with roots and fruits.

*Isolectotype* – The name of the taxon on the original label is the same as on the lectotype with JÁVORKA's handwriting.

*Locus* – Printed: "Montes Albaniae boreali-orientalis inter opp. Prizren et Debra jacentes;" and after with KÜMMERLE's handwriting – "montes nivales Korab, ad nives deliquescentes declivium meridionalium cacuminis altissimi alterius supra dolinam maximam supremam ad pagum Radomir; solo calcareo; altit circa 2800 m. s. m."

*Data* – Leg., and *collection* is the same as the lectotype. DALLA TORRE and HARMS' number: 2989, inventory number: 201356, collector's number: 91.

The specimens on the sheet, which was designated as the isolectotype, consist of 5 leafy plants with roots and flowers and 20 small leafy plants with roots and flowers in an envelope.

#### *Draba simonkaiana* JÁVORKA, 1910

*Lectotype* – Protologue: JÁVORKA (1910a: 281). On the original label with JÁVORKA's handwriting: "Draba Simonkaiana Jáv. n. spec."

*Locus* – With JÁVORKA's handwriting: "Comit. Hunyad. Transsilvaniae, Montes Pareng infra Petrosény: in rupibus Dealu Badea in altit. ca. 1700 m., in consortio Potentillae Haynaldianae".

*Data* – With JÁVORKA's handwriting: "20.VII.1910. S. Jávorka".

*Collection* – "Herbar. Musei Nat. Hungar Budapest. Flora Hungarica". DALLA TORRE and HARMS' number: 2989, inventory number: 72536, collector's number: 151.

The specimens on the sheet, which was designated as the lectotype, consist of 10 or 15 leafy plants with roots and fruits.

*First Isolectotype* – On the label with JÁVORKA's handwriting: "Draba Simonkaiana Jáv. n. sp."

*Locus* – With JÁVORKA's handwriting: "Comit. Hunyad: in fissuris rup. granit. montis D. Badea alp. Pareng altid. 1700 m."

*Data* – With JÁVORKA's handwriting: "20/VII. 910. L. Dr. Jávorka"

*Collection* – "Herbar. Musei Nat. Hungar. Budapest Flora Hungarica Duplicata ; Herbar Reg. Scient. Univ. Hung. Budapest." DALLA TORRE and HARMS' number: 2989, inventory number: 595478.

The specimens on the sheet, which was designated as the isolectotype, consist of 7 leafy plants with roots and flowers.

*Second Isolectotype* – On the label with JÁVORKA's handwriting: "Draba Simonkaiana Jáv."

*Locus* – With JÁVORKA's handwriting: "Comit. Hunyad: in fissuris saxi granitici loco "Badea" dicto in alpe Pareng ad opp. Petrosény – Locus classicus".

*Data* – With JÁVORKA's handwriting: "12. Jun. 1918. leg. S. Jávorka".

*Collection* – Same as lectotype. DALLA TORRE and HARMS' number: 2989, inventory number: 238189.

The specimens on the sheet – in an envelope – which was designated as the isolectotype, consist of 4 leafy plants with roots and fruits.

*Barbareae balcana* PANCIC var. *albanica* KÜMMERLE et JÁVORKA, 1926

*Lectotype* – Protologue: CSIKI *et al.* (1926: 243). On the original label with KÜMMERLE's handwriting: "Barbareae balcana Panc. (= rivularis Panc., non auct.) var. albanica Kümm. et Jáv. var. nova".

*Locus* – Printed: "Montes Albaniae boreali-orientalis inter opp. Prizren et Debra jacentes:" with KÜMMERLE's handwriting – "montes nivales Korab, in herbis declivium orientalium cacuminis altissimi infra dolinam maximam supremam ad pagum Radomir; solo calcareo; altitud. circa 2000 m.s.m."

*Data* – With KÜMMERLE's handwriting: "VII. 23. 1918" printed: "leg. Dr. J. B. Kümmerle".

*Collection* – "Iter Albanicum Per Sectionem Botanicam Musei Nationalis Hungarici Susceptum". DALLA TORRE and HARMS' number: 2961, inventory number: 197406, collector's number: 91.

The specimens on the sheet, which was designated as the lectotype, consist of 7 plants with roots, leaves and flowers.

*Arabis nivalis* GUSSONE f. *korabensis* KÜMMERLE et JÁVORKA, 1926

*Lectotype* – Protologue: CSIKI *et al.* (1926: 244). On the original label with KÜMMERLE's handwriting: "Arabis nivalis Guss. f. Korabensis Kümm. et Jáv. (fl. lilacinis majoribus)"

*Locus* – Printed: "Montes Albaniae boreali-orientalis inter opp. Prizren et Debra jacentes:" with KÜMMERLE's handwriting – "montes nivales Korab, in saxosis mobilibus declivium orientalium cacuminis altissimi supra dolinam maximam supremam ad pagum Radomir; solo calcareo; altit. circa 2700 m. s. m."

*Data* – With KÜMMERLE's handwriting: "VII. 24. 1918" printed: "leg. Dr. J. B. Kümmerle".

*Collection* – "Iter albanicum Per Sectionem Botanicam Musei Nationalis Hungarici Susceptum". DALLA TORRE and HARMS' number: 3001, inventory number: 203623, collector's number: 91.

The specimens on the sheet, which was designated as the lectotype, consist of 4 plants with roots, leaves and flowers.

*Isolectotype* – On the label with KÜMMERLE's handwriting: "Arabis nivalis Guss. f. Korabensis Kümm. et Jáv."

*Locus* – Printed: "Montes Albaniae boreali-orientalis inter opp. Prizren et Debra jacentes:" with KÜMMERLE's handwriting – "montes nivales Korab, in saxosis mobilibus declivium orientalium in cacumine aliquo ad limites Macedoniae supra pagum Zuzen; altit. circa 2600 m. s. m.; sol. calcareo."



*Erysimum korabense* KÜMMERLE et JÁVORKA, 1918

(Figs 9–11)

*Holotype* – according to A. POLATSCHEK 1977 – Protologue: JÁVORKA (1918: 20).  
On the original label with KÜMMERLE's handwriting: "Erysimum" and after with JÁVOR-

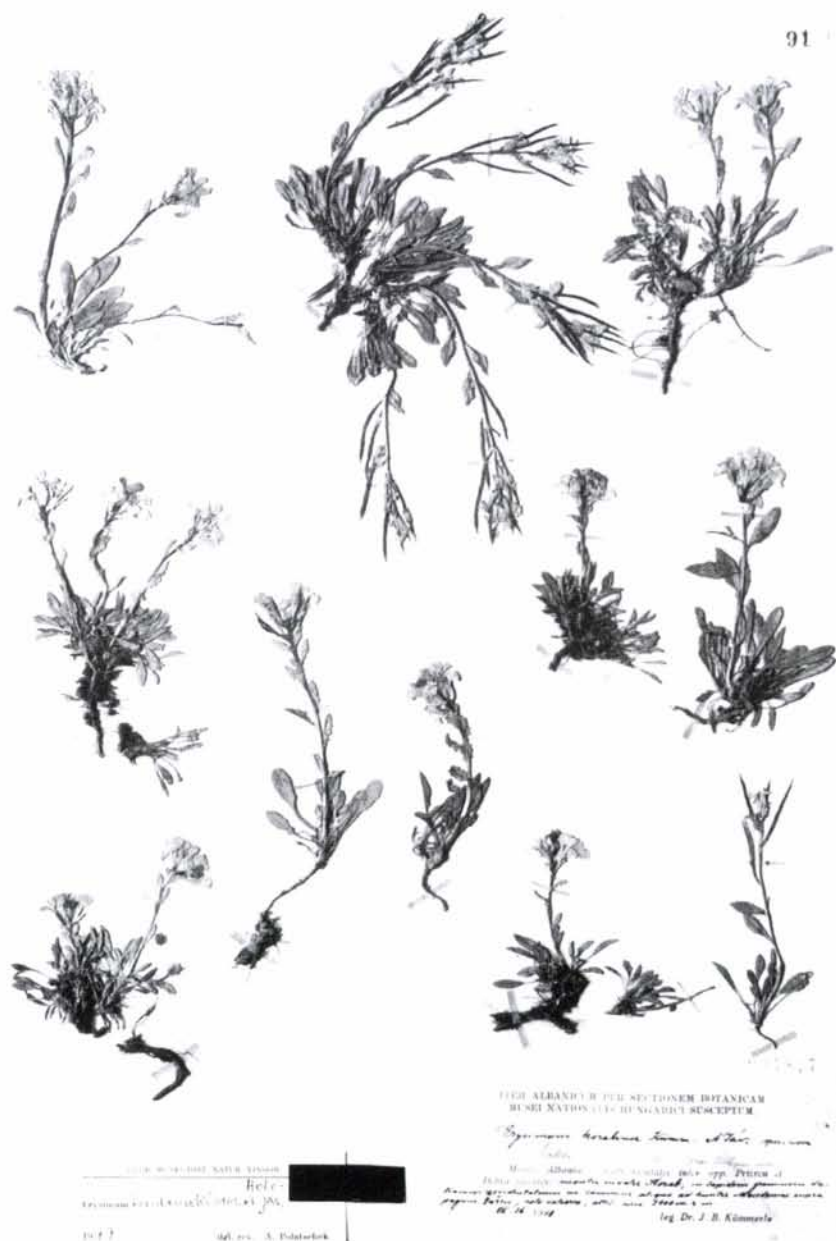


Fig. 11. *Erysimum korabense* KÜMMERLE et JÁVORKA, holotype

KA's handwriting: "korabense Küm. et Jáv. spec. nova", after that difficult to read, probably with JÁVORKA's handwriting, with pencil: "habitu E. pulchelli Willd. in Olimpo Bithyniis nascentis" (Fig. 9).

*Locus* – Printed: "Montes Albaniae boreali-orientalis inter opp. Prizren et Debra jacentes:" with KÜMMERLE's handwriting: "montes nivales Korab, in lapidosis graminosis declivium occidentalium in cacumine aliquo ad limites Macedoniae supra pagum Zuzen; solo calcareo; altit. circa 2400 m.s.m." (Fig. 9).

*Data* – With KÜMMERLE's handwriting: "VII.26.1918", printed – "leg. Dr. J. B. Kümmerle" (Fig.9). On POLATSCHKEK's label: "Erysimum korabense Küm. et Jáv. Holotypus 1977 rev. A. Polatschek Herb. Musei Hist. Natur. Vindob." (Fig. 10).

*Collection* – "Iter Albanicum Per Sectionem Botanicam Musei Nationalis Hungarici Susceptum." DALLA TORRE and HARMS' number: 3004, inventory number: 204817, collector's number: 91.

The specimens on the sheet, which was designated as holotype, consist of 11 plants with roots, leaves and inflorescences (flowers and fruits) (Fig. 11).

*Isotype* – according to POLATSCHKEK 1977 – On the original label with JÁVORKA's handwriting: "Erysimum korabense Küm. et Jáv. duplum".

*Locus* – Printed: "Montes Albaniae boreali-orientalis inter opp. Prizren et Debra jacentes:" with KÜMMERLE's handwriting: "Montes nivales Korab. In saxosis graminosis in cacumine aliquo ad limites Macedoniae supra pag. Zuzen, alt.2400 m."

*Data* – With KÜMMERLE's handwriting: "VII.26.1918", printed – "leg. Dr. J. B. Kümmerle". On POLATSCHKEK's label: "Erysimum korabense Küm. et Jáv. Isotypus 1977 rev. A. Polatschek Herb. Musei Hist. Natur. Vindob."

*Collection* – same as holotype. DALLA TORRE and HARMS' number: 3004, inventory number: 458056.

The specimen on the sheet, which was designated as isotype, consists of one plant with root, leaves and inflorescences (flowers and fruits).

### *Erysimum rechingeri* JÁVORKA, 1929

*Holotype* – Housed in Vienna, Herbarium, Department of Botany, Naturhistorisches Museum Wien (W) – Protologue: RECHINGER (1929: 296)

*First isotype* – according to A. POLATSCHKEK 1993 – On the original label – "Nr. 1352 Erysimum Rechingeri Jáv. n. sp."

*Locus* – "Insula Lemnos: Kastro, in rupestribus versus Thanos; subtr. trachyt." On JÁVORKA's label with his handwriting – "Erysimum Rechingeri Jáv. n. sp. (vel ssp. E. pusilli Ch. et B.) 1929. I." printed – "revid. S. Jávork" On POLATSCHKEK's label printed – "Erysimum rechingeri Jáv. Isotypus 1993 rev. A. Polatschek".

*Collection* – "K. H. Rechinger Fil. Iter Graecum 1927". DALLA TORRE and HARMS' number: 3004, inventory number: 457348.

The specimens on the sheet, which was designated as isotype, consist of some leafy stems with inflorescences (flowers and fruits).

*Second isotype* – according to POLATSCHKEK 1993, is the same as the first isotype, without JÁVORKA's label, inventory number: 204953.

The specimen on the sheet, which was designated as isotype, consists of a plant with root, leaves and inflorescences (flowers and fruits).

*Third isotype* – according to POLATSCHKEK 1993, is the same as the second isotype, inventory number: 204954.

The specimens on the sheet, which was designated as isotype, consist of 2 leafy plants with roots, flowers and fruits and a separate stem with leaves and inflorescences (flowers and fruits).

*Fourth isotype* – according to POLATSCHKEK 1993, is the same as the second isotype, inventory number: 458058.

The specimens on the sheet, which was designated as isotype, consist of a leafy stem with flowers and fruits and some fragments of stems, leaves and inflorescences in an envelope.

## CAMPANULACEAE

### *Campanula sibirica* LINNAEUS f. *divergentiformis* JÁVORKA, 1922

*Lectotype* – Protologue: JÁVORKA (1922a: 150) On the original label with JÁVORKA's handwriting: "Campanula sibirica L. f. divergentiformis Jáv."

*Locus* – With JÁVORKA's handwriting: "Montes Bükk: in saxosis cacuminis m. – Tarkő supra pag. Felsőtárkány".

*Data* – With JÁVORKA's handwriting: "29. VI. 1922. S. Jávorka".

*Collection* – "Herbar. Musei Nat. Hungar. Budapest. Flora Hungarica". DALLA TORRE and HARMS' number: 8644, inventory number: 164361, collector's number: 151.

The specimens on the sheet, which was designated as the lectotype, consist of 2 leafy plants with flowers and a leafy stem with flowers.

\* \* \*

*Acknowledgements* – I wish to express my gratitude to JUDIT ESZTERGÁLYOS for her technical assistance.

## REFERENCES

- CSIKI, E., JÁVORKA, S. & KÜMMERLE, J. B. (1926): Adatok Albánia flórájához. (Additamenta ad Floram Albaniae.) – In: TELEKI, P. & CSIKI, E. (eds): *A Magyar Tudományos Akadémia Balkán-kutatásainak Tudományos Eredményei. Vol. III. [Scientific results of research of the Hungarian Academy of Sciences on the Balkan Peninsula. Vol. III.]* Magyar Tudományos Akadémia, Budapest, 348 pp.
- DALLA TORRE, C. G. & HARMS, H. (1900–07): *Genera Siphonogarum ad Systema Englerianum Conscripta.* – Engelmann, Lipsiae, 921 pp.
- JÁVORKA, S. (1910a): *Draba simonkaiana* Jáv. n. sp. – *Bot. Közlem.* 9: 281–285.

- JÁVORKA, S. (1910b): Néhány adat a magyar flóra ismeretéhez, egyszersmind a *Linum flavum* L. európai alakkörének revisiója. (Beiträge zur Kenntnis der ungarischen Flora nebst Revision der europäischen Vertreter des Formenkreises des *Linum flavum* L.). – *Magyar Bot. Lapok* 9: 145–163.
- JÁVORKA, S. (1918): Új adatok Albánia flórájához. (Novitates florae Albanicae.) – *Bot. Közlem.* 17: 17–29.
- JÁVORKA, S. (1920): *Lunaria telekiana* Jáv. n. spec. – *Magyar Bot. Lapok* 19: 1–2.
- JÁVORKA, S. (1921): Új adatok Albánia flórájához. (Novitates florae Albanicae.) – *Bot. Közlem.* 19: 17–30.
- JÁVORKA, S. (1922a): A magyar flóra néhány új alakja. (Formae nonnullae novae florae hungaricae.) – *Bot. Közlem.* 20: 149–150.
- JÁVORKA, S. (1922b): Plantae novae albanicae II. – *Magyar Bot. Lapok* 21: 17–22.
- JÁVORKA, S. (1922c): Plantae in insula Creta a Ludovico Biró lectae. – *Magyar Bot. Lapok* 21: 25–26.
- JÁVORKA, S. (1923): Adnotatio ad cognitionem generis *Alyssoides* Mill. (= *Vesicaria* Lam.). – *Bot. Közlem.* 21: 73.
- JÁVORKA, S. (1925): *Magyar Flóra. (Flora Hungarica.)* – Studium, Budapest, 307 pp.
- JÁVORKA, S. (1937): Kisebbs közlemények. (Kleinere Mitteilungen.) – *Bot. Közlem.* 34: 118–119.
- KOVÁTS, D. (1975): Boraginaceae type specimens of Herbarium Carpato-Pannonicum. – *Studia bot. hung.* 10: 123–133.
- KOVÁTS, D. (1982): Poaceae type specimens of Herbarium Carpato-Pannonicum I. (*Erianthus-Agrostis*). – *Studia bot. hung.* 16: 99–107.
- KOVÁTS, D. (1984): Poaceae type specimens of Herbarium Carpato-Pannonicum in Budapest II. (*Calamagrostis-Sesleria*). – *Studia bot. hung.* 17: 61–68.
- KOVÁTS, D. (1992): Waldstein and Kitaibel types in the Hungarian Natural History Museum in Budapest. – *Annl. hist.-nat. Mus. natn. hung.* 84: 33–53.
- KOVÁTS, D. (1998): Plant types of Sándor Jávorka in the Hungarian Natural History Museum in Budapest I. – *Annl. hist.-nat. Mus. natn. hung.* 90: 115–132.
- RECHINGER, K. H. (1929): Beitrag zur Kenntnis der Flora der ägäischen Inseln und Ost-Griechenlands. – *Annl. naturh. Mus. Wien* 43: 269–340.
- SOMLYAY, L. (1997): Flowering plant types in the Hungarian Natural History Museum (BP) I. Lotus type specimens of József Ujhelyi (1910–1979). – *Annl. hist.-nat. Mus. natn. hung.* 89: 63–70.
- SOMLYAY, L. (1998): Flowering plant types in the Hungarian Natural History Museum (BP) II. Achillea type specimens of József Ujhelyi (1910–1979). – *Annl. hist.-nat. Mus. Natn. hung.* 90: 133–138.
- URUMOV, I. K. (1920): Neue und seltene Pflanzen Bulgariens I. – *Magyar Bot. Lapok* 19: 33–40.