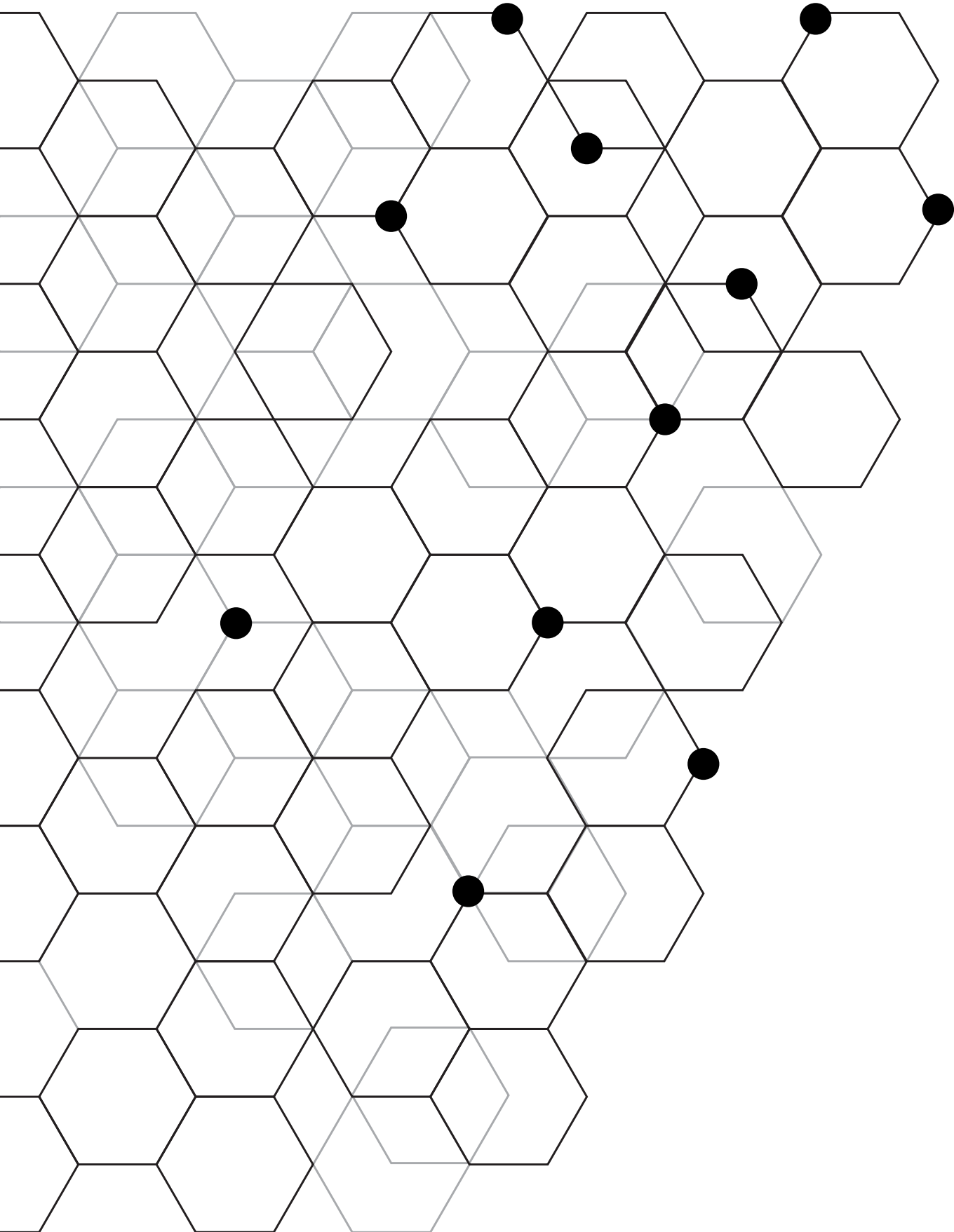


APPENDIX 14  
AREAS SAFEGUARDED OR IDENTIFIED AS AREAS  
OF SEARCH FOR MINERALS DEVELOPMENT





# APPENDIX 14

## AREAS SAFEGUARDED OR IDENTIFIED AS AREAS OF SEARCH FOR MINERALS DEVELOPMENT

Policy PRI of the Aberdeenshire Local Development Plan identifies important mineral safeguarded sites, where other forms of development should not generally be allowed, and wider areas of search where mineral reserves should not be sterilised by inappropriate developments.

These are shown on the “Safeguarding Resources” proposals map of the Local Development Plan. That map is insufficiently detailed to allow the identification of specific boundaries and the following maps allow the boundaries of this area to be accurately defined. These boundaries reflect the local application of this policy area and do not impact on either the principle of the policy (which is established by Policy PRI), or the Spatial Strategy of the wider Plan area.

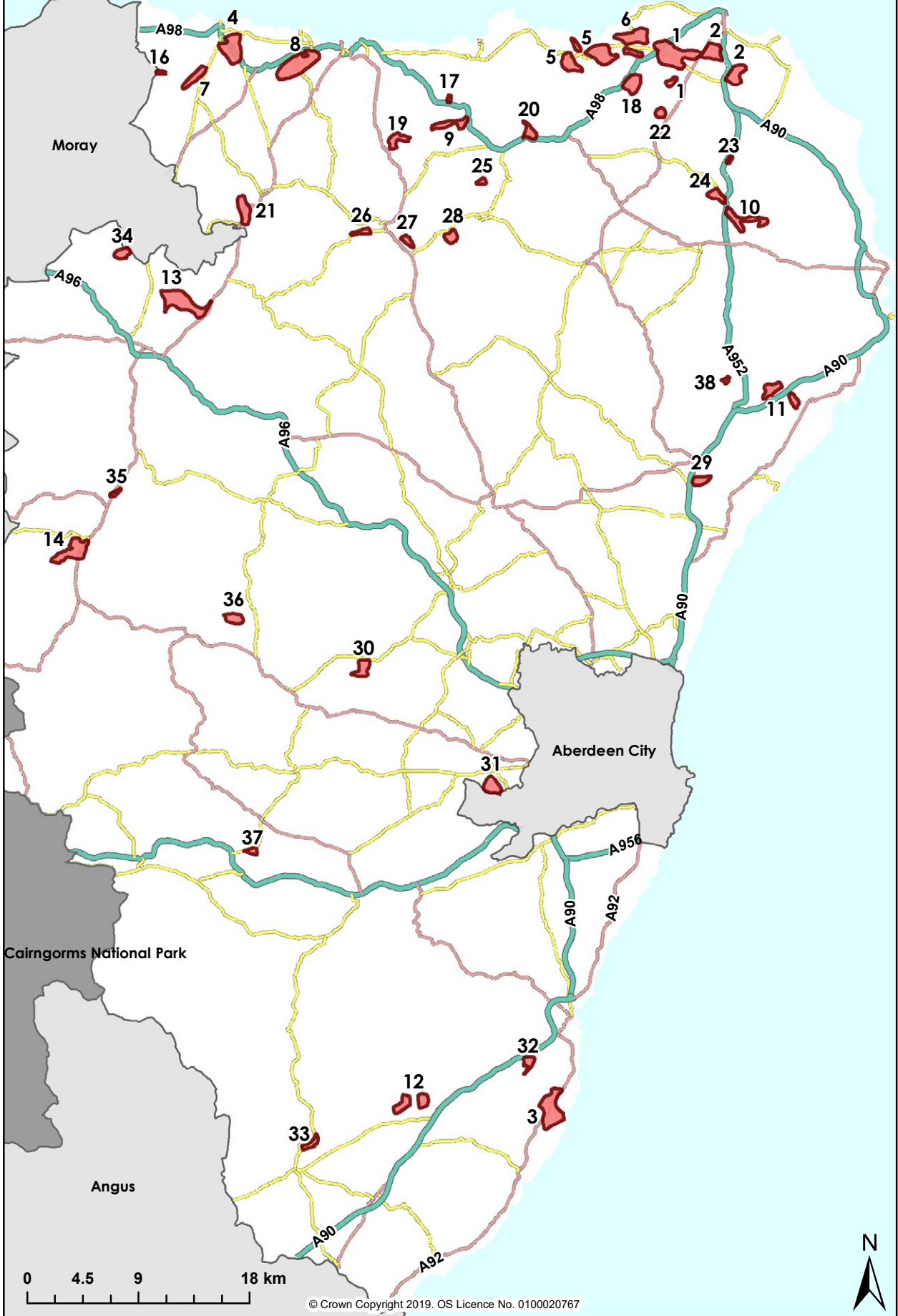
The market area is defined as a 50km travel distance from the Aberdeen City boundary and the Strategic Growth Areas defined in the Strategic Development Plan.

**Table 1 Areas of Search for Minerals (Sand and Gravel Reserves)**

|                         | Map No. |                               | Map No. |
|-------------------------|---------|-------------------------------|---------|
| Memsie West             | 1       | Tyrie                         | 18      |
| Memsie North            | 2       | Castleton, Turriff            | 19      |
| Newmill West            | 2       | Bracklamore, New Pitsligo     | 20      |
| Catterline              | 3       | Aberchirder West              | 21      |
| Roughilly, Portsoy      | 4       | Tarwathie, Strichen           | 22      |
| New Aberdour West       | 5       | New Leeds                     | 23      |
| New Aberdour North      | 5       | Brownhill, Fetterangus        | 24      |
| New Aberdour East       | 5       | North Garmond                 | 25      |
| Peathill                | 6       | Turriff West                  | 26      |
| Fordyce Hill, Fordyce   | 7       | Turriff South                 | 27      |
| Banff West              | 8       | Idoch, Cuminestown            | 28      |
| Auchlin, Turriff        | 9       | Hill of Logie, Ellon          | 29      |
| Gaval, Fetterangus      | 10      | Old Crow Wood, Monymusk       | 30      |
| Hatton West             | 11      | Cairnie Woods, Garlogie       | 31      |
| Hatton South            | 11      | Criggie, Stonehaven           | 32      |
| Auchenblae East         | 12      | Gallow Hill, Fettercairn      | 33      |
| Auchenblae West         | 12      | Ruthven                       | 34      |
| Hill of Kinnoir, Huntly | 13      | Rhynie                        | 35      |
| Lumsden North           | 14      | Woodhead, Alford              | 36      |
| Auchlin                 | 15      | Tillydrine, Kincardine O'Neil | 37      |
| Cotton Hill, Fordyce    | 16      | Muirtack                      | 38      |
| Bo, Turriff             | 17      |                               |         |

MINERALS - AREAS OF SEARCH

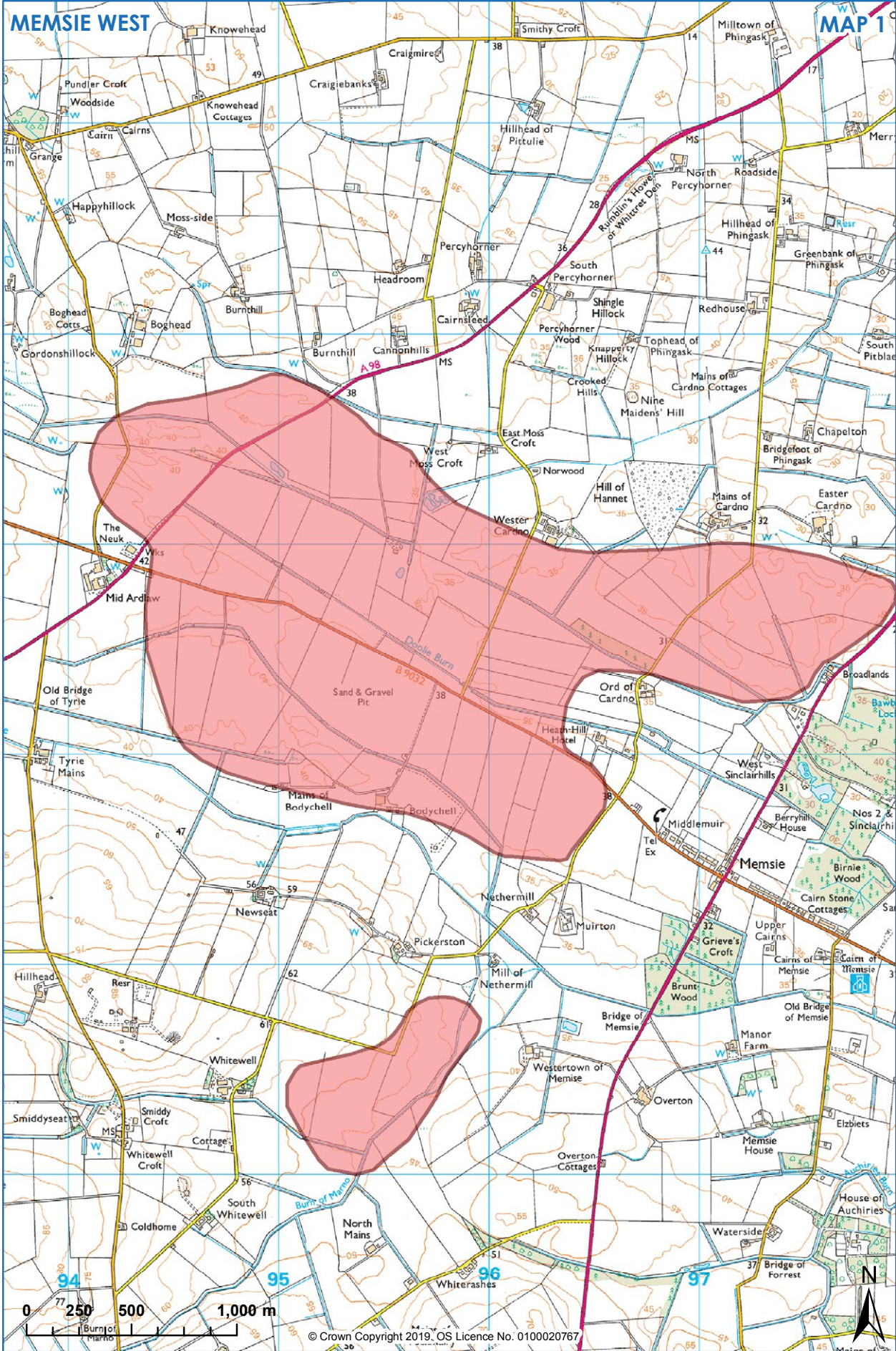
MAP KEY



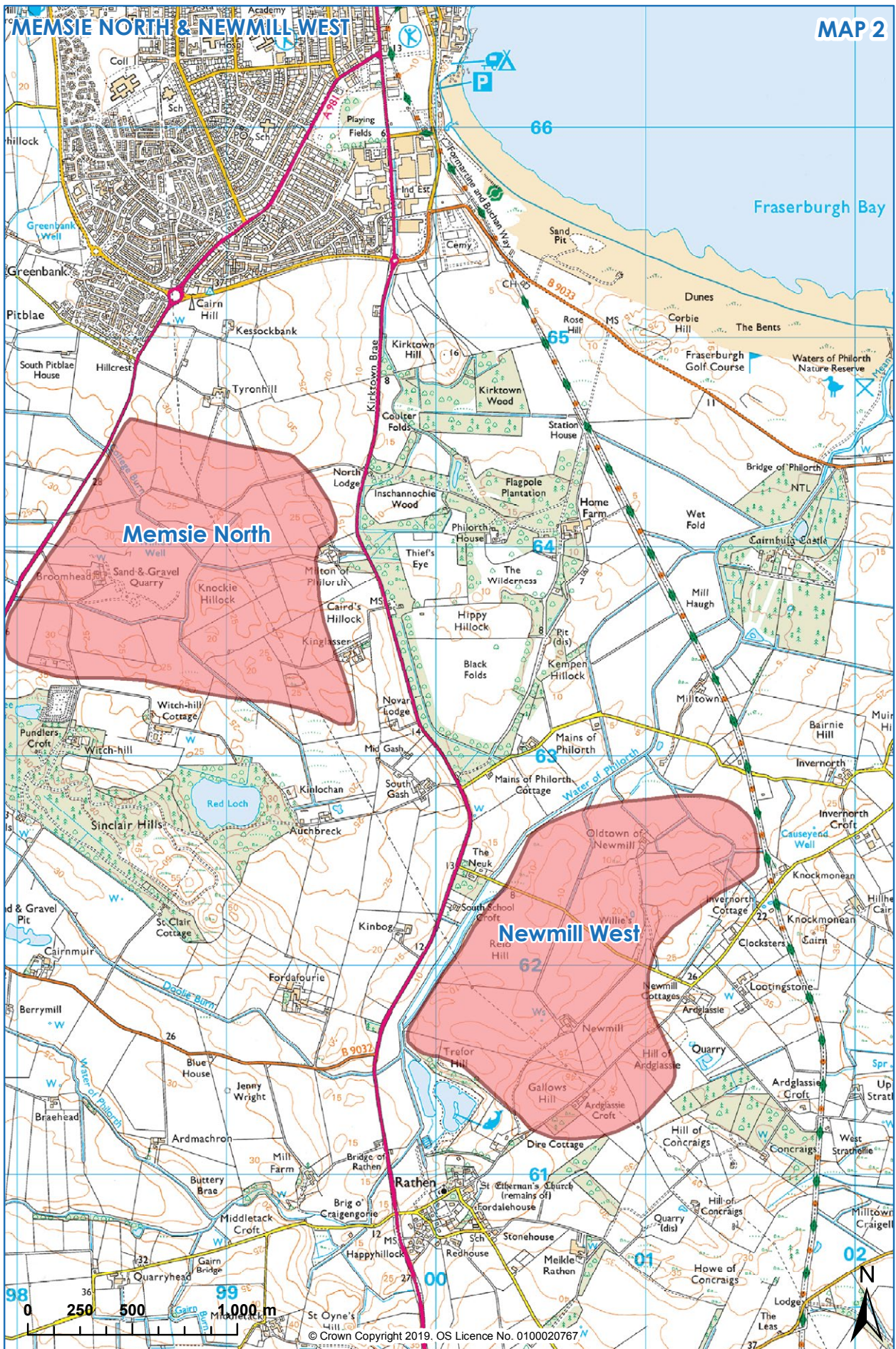
© Crown Copyright 2019. OS Licence No. 0100020767

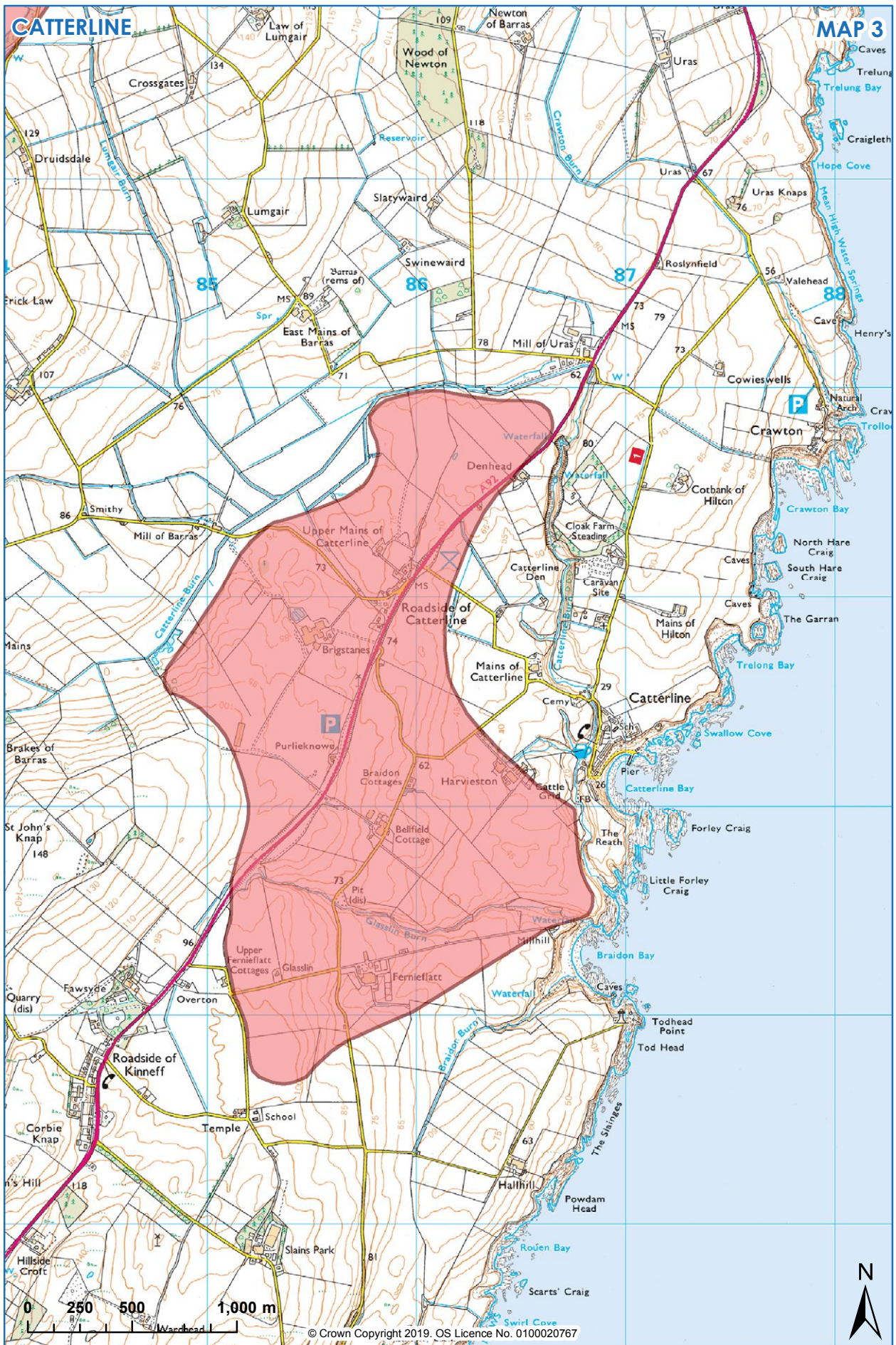
# MEMSIE WEST

MAP 1



© Crown Copyright 2019, OS Licence No. 0100020767

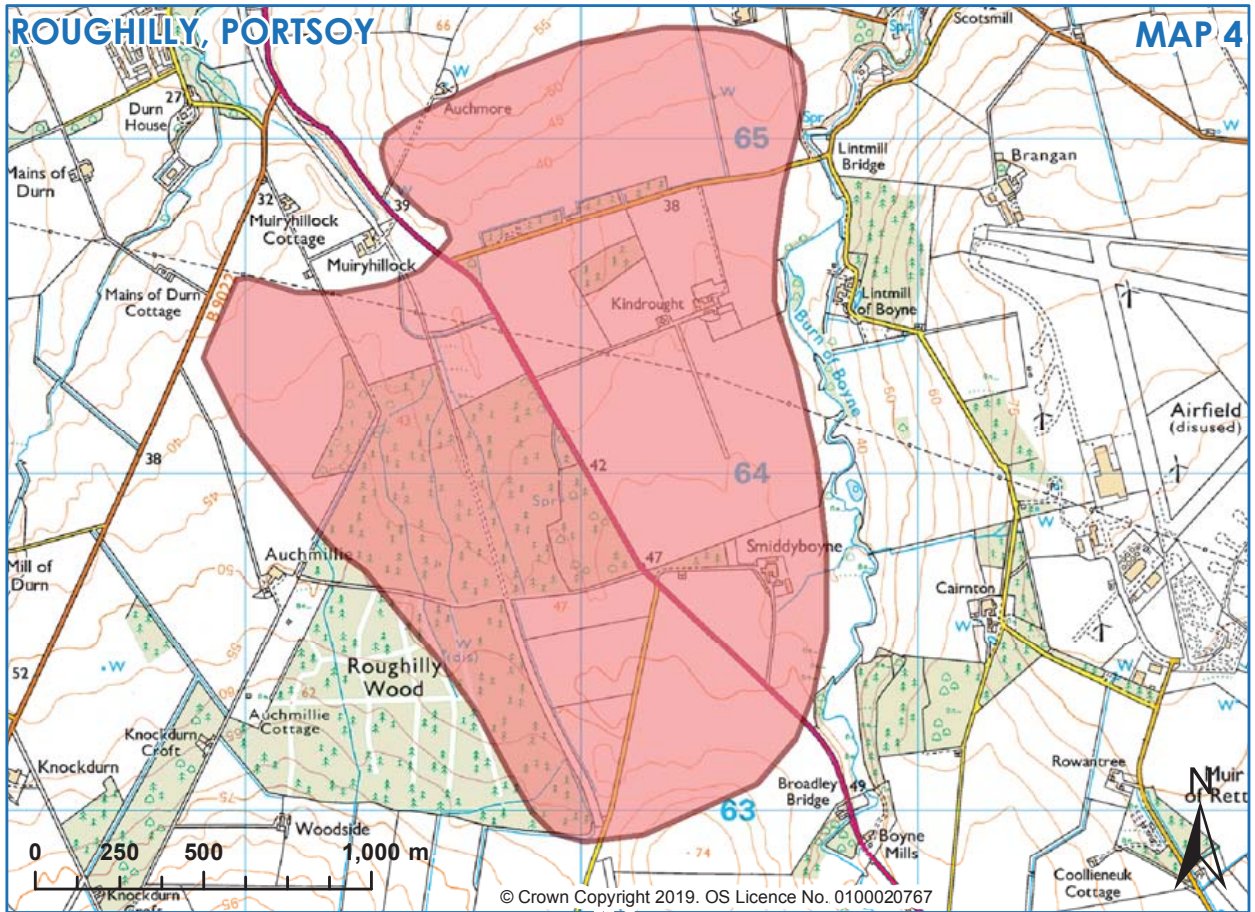




© Crown Copyright 2019. OS Licence No. 0100020767

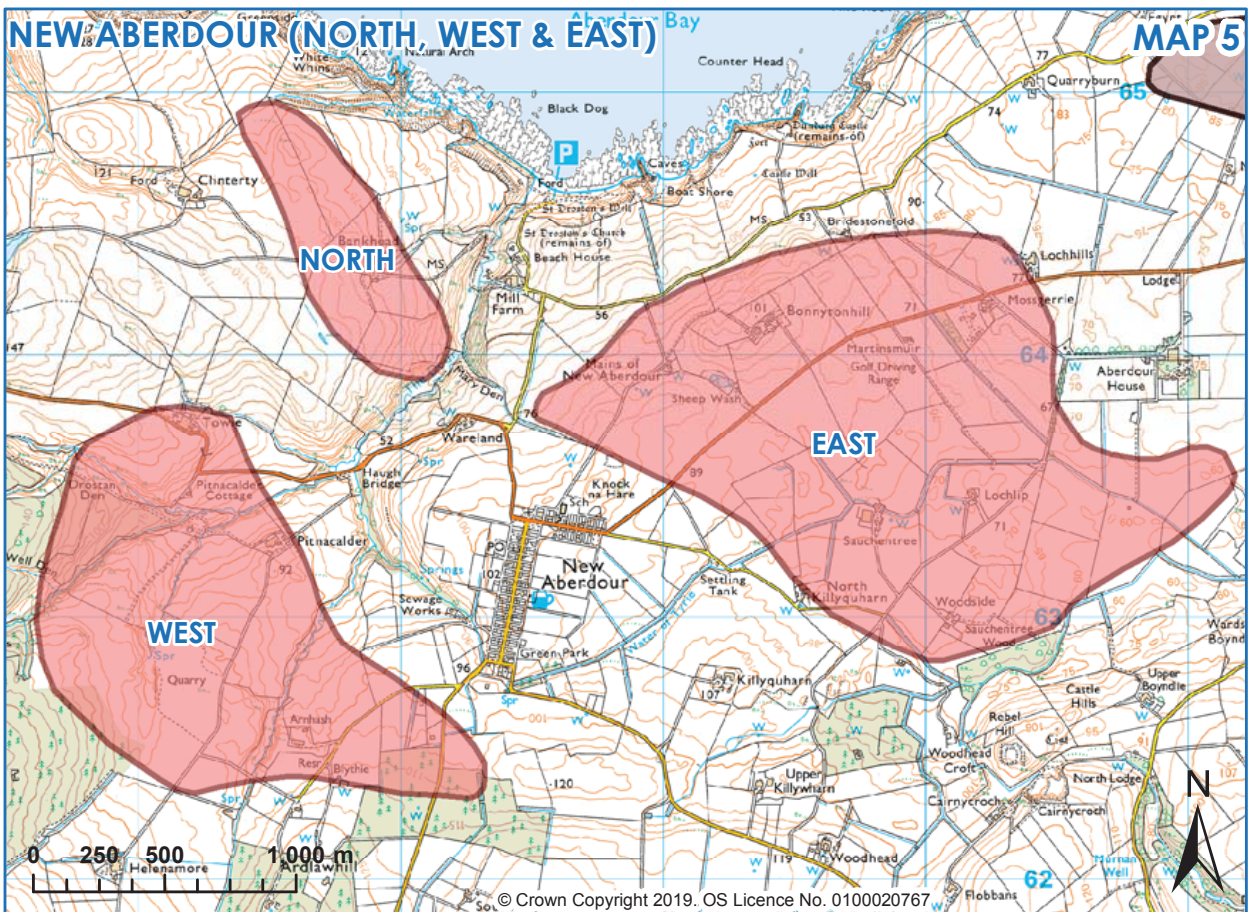
# ROUGHILLY, PORTSOY

MAP 4

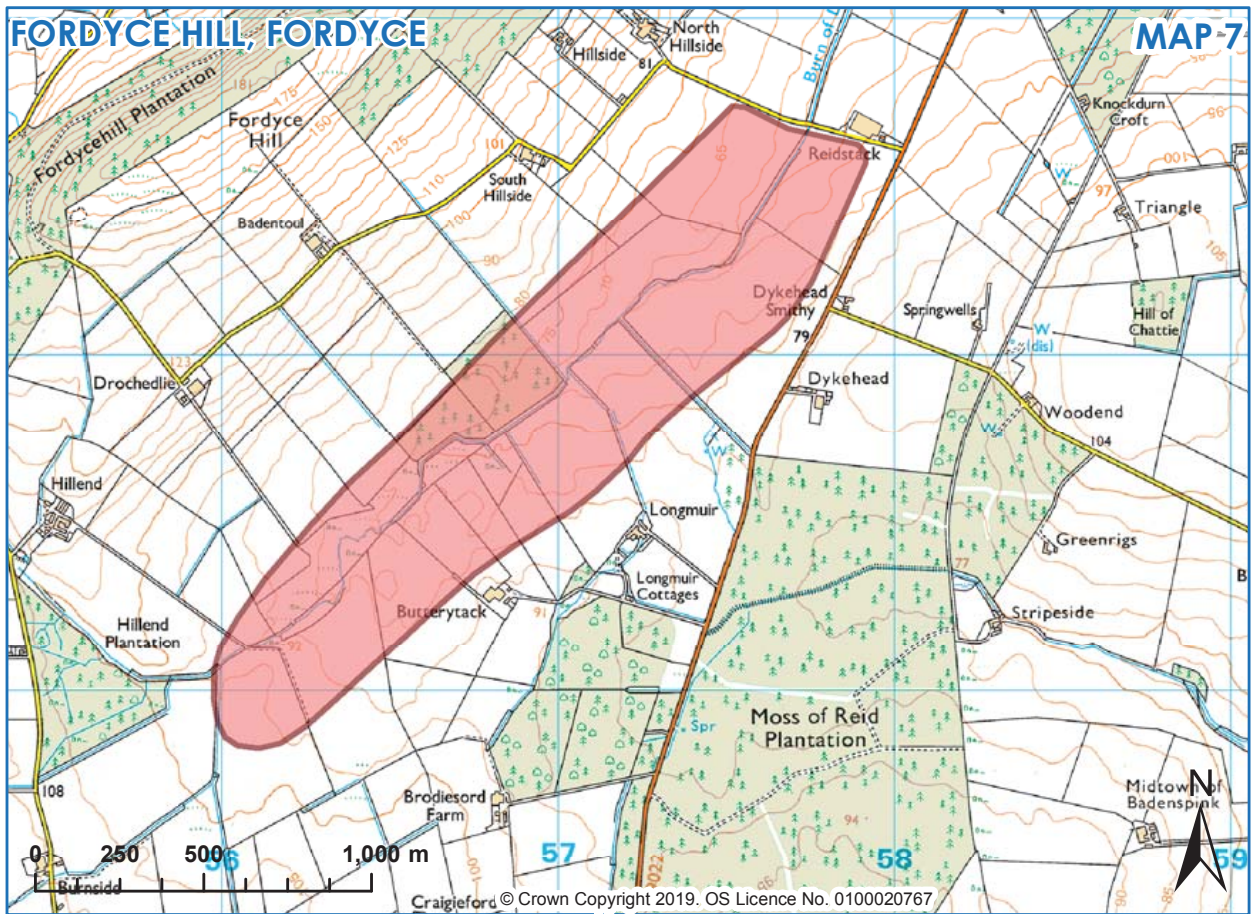
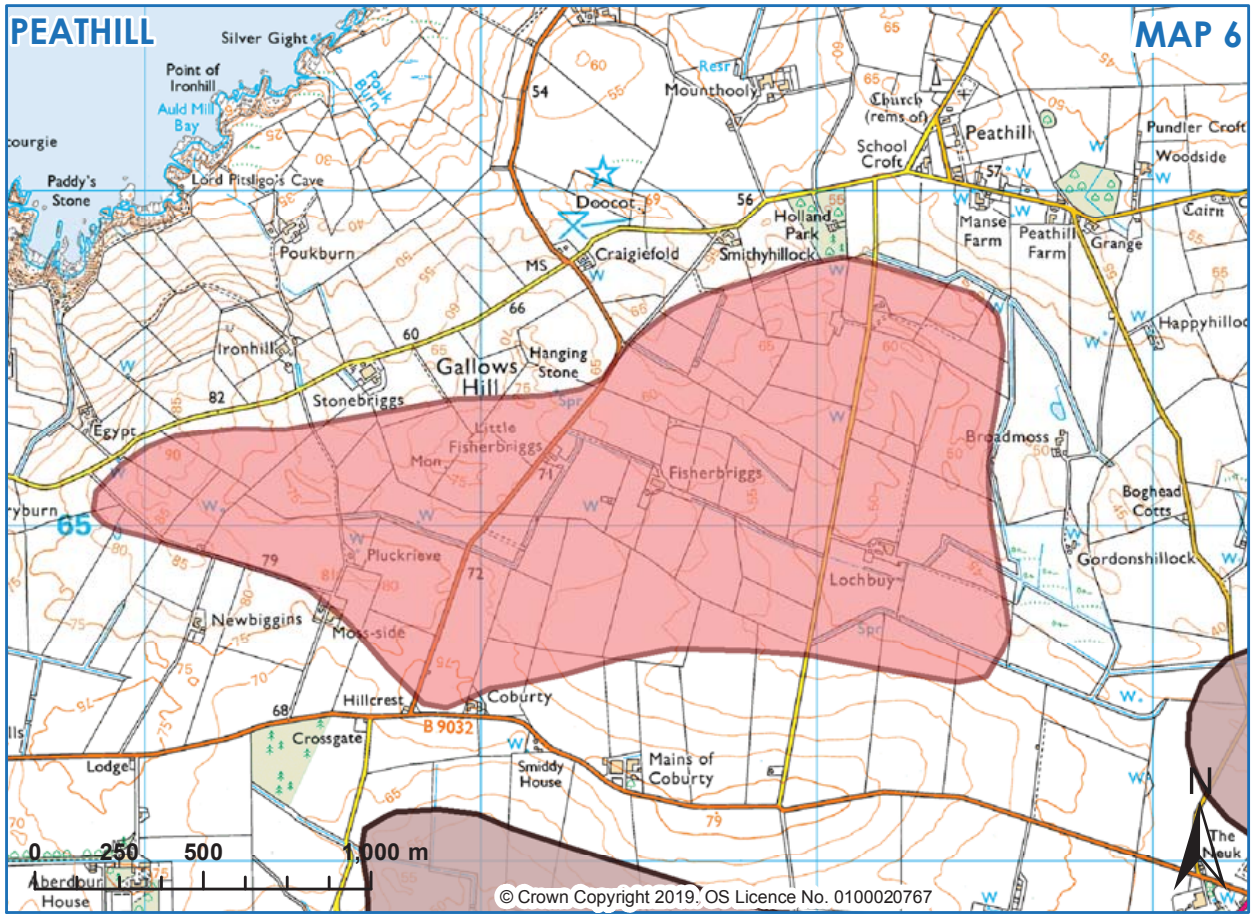


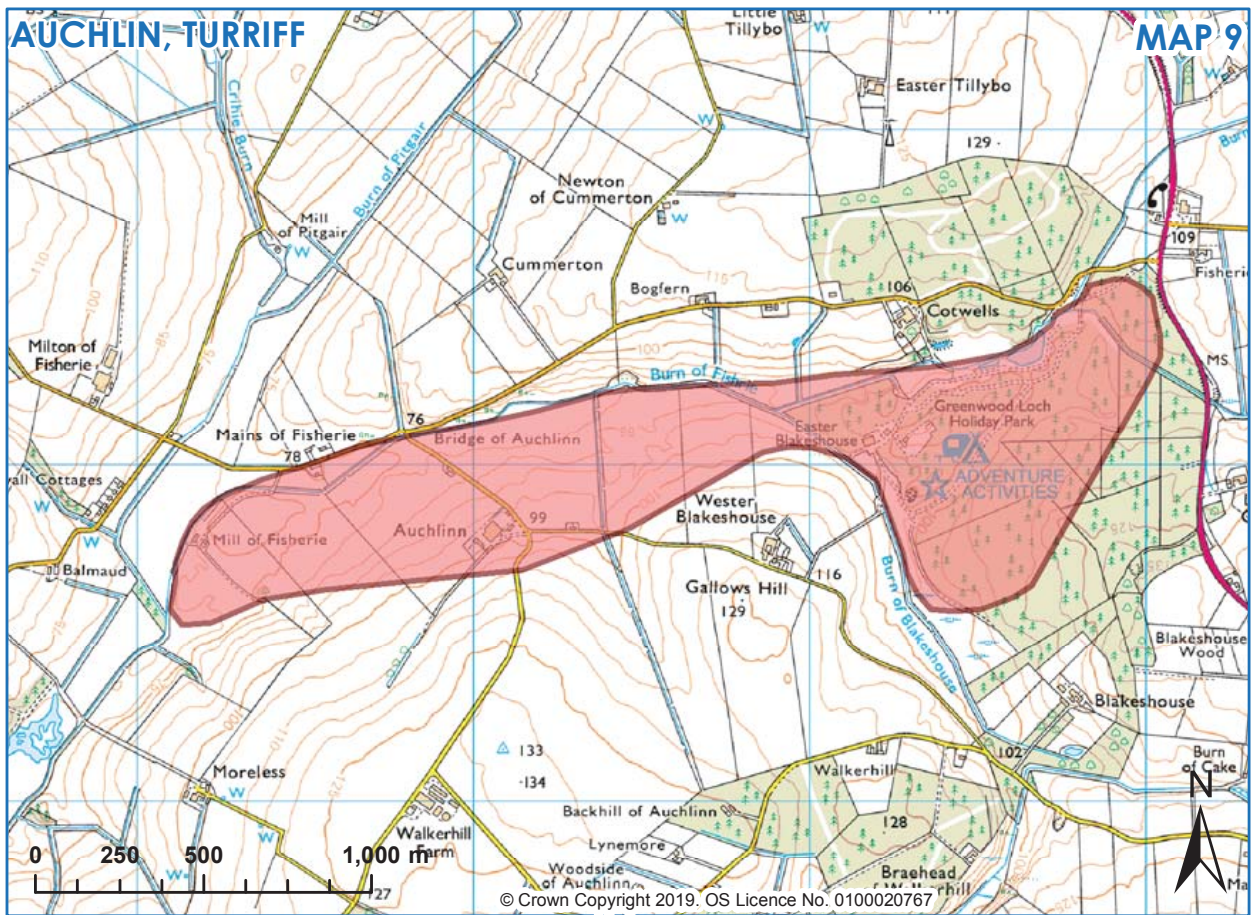
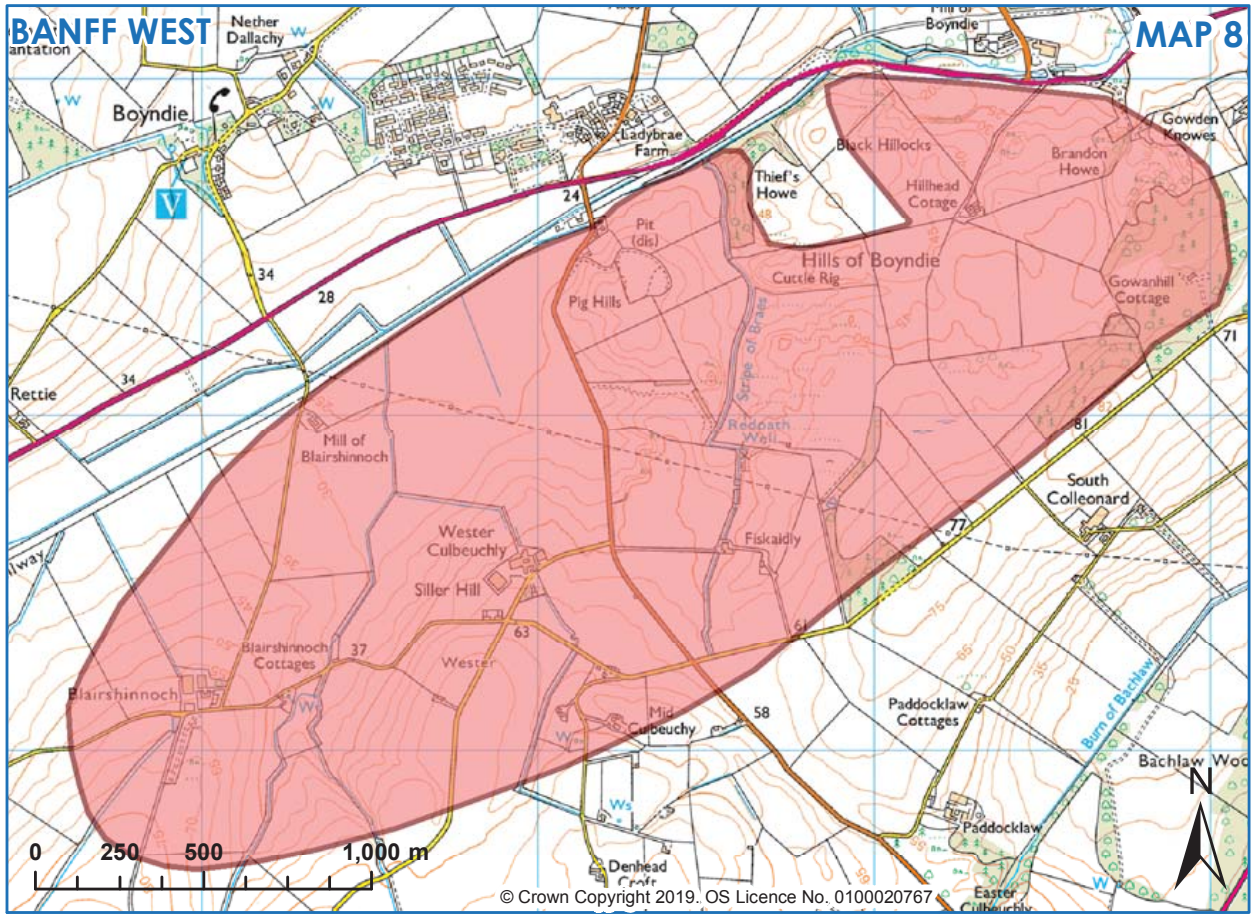
# NEW ABERDOUR (NORTH, WEST & EAST)

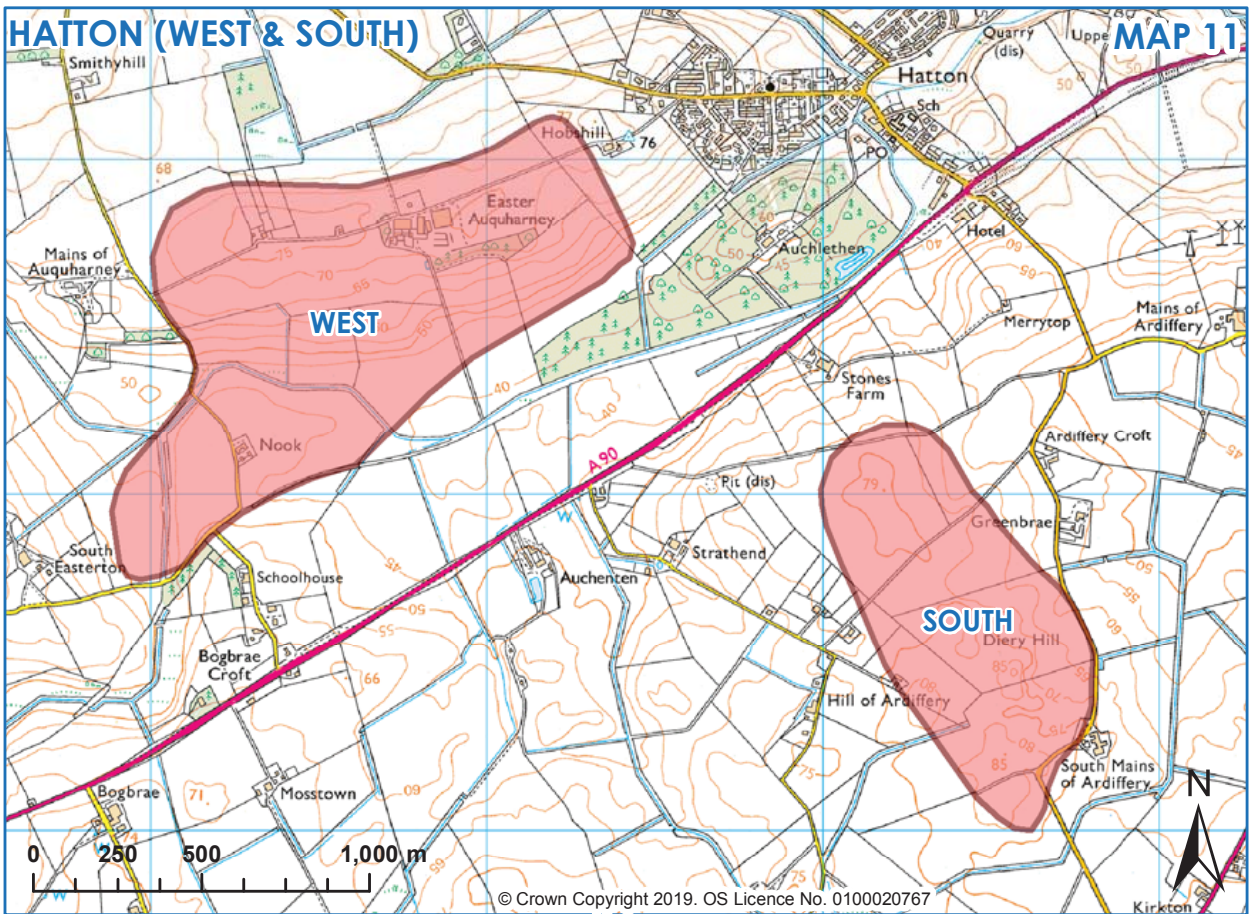
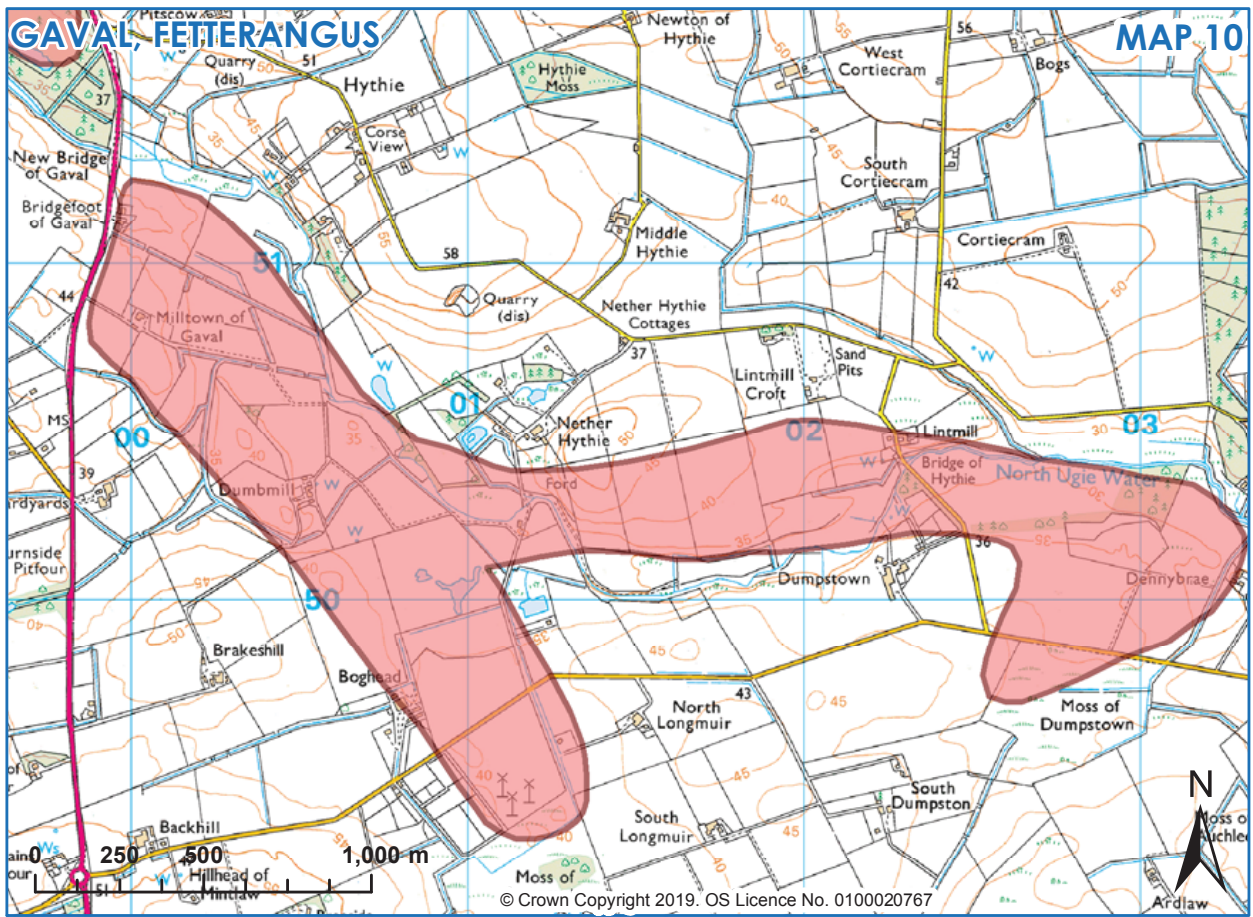
MAP 5





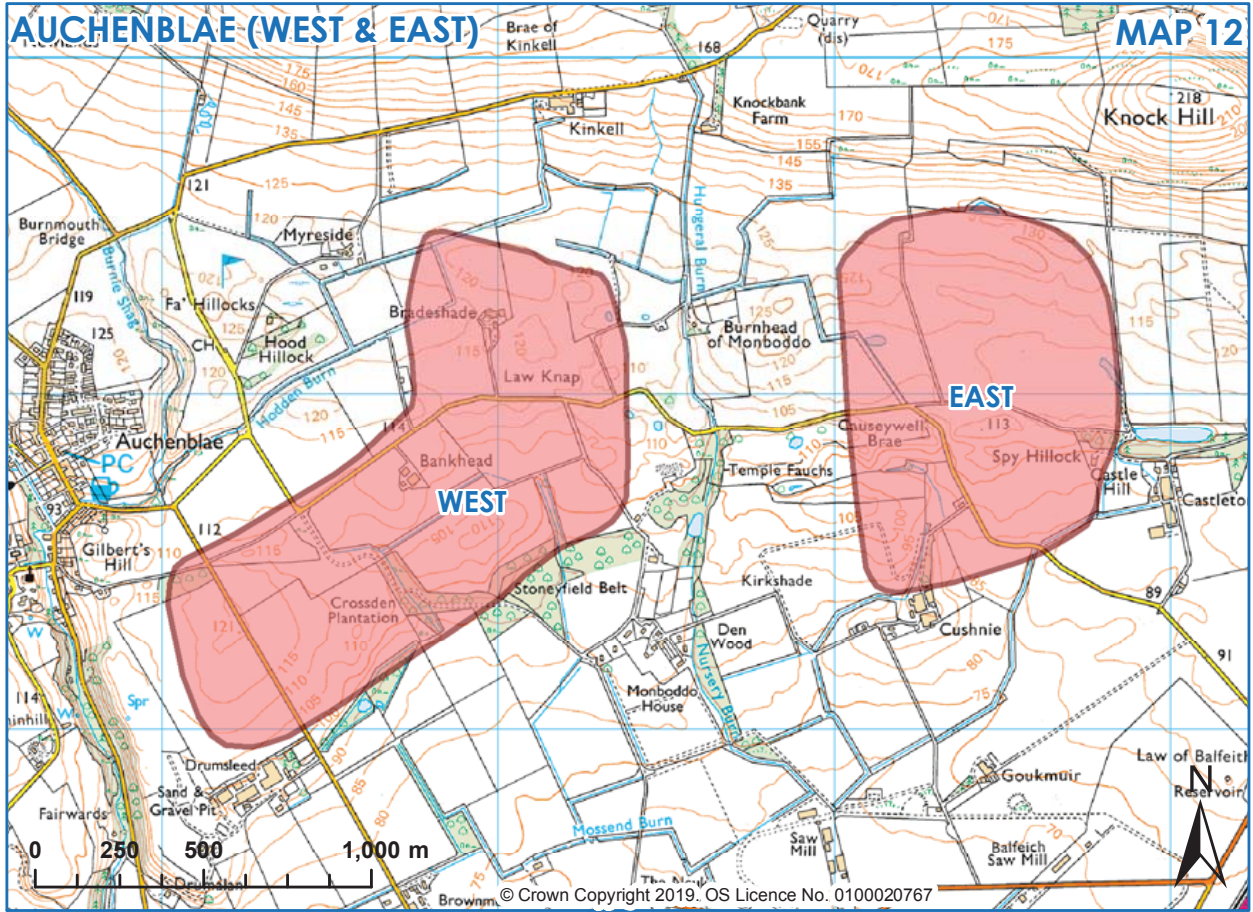






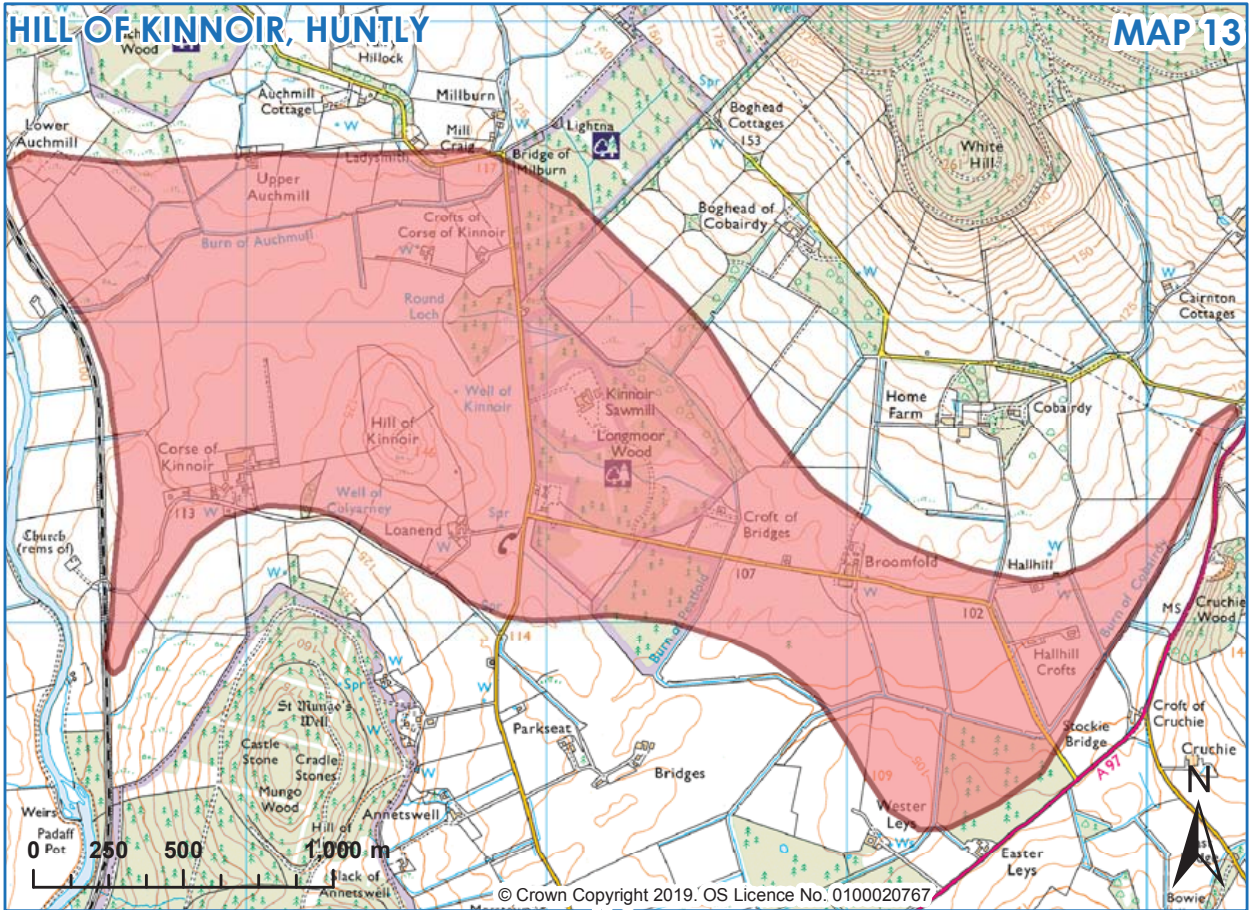
# AUCHENBLAE (WEST & EAST)

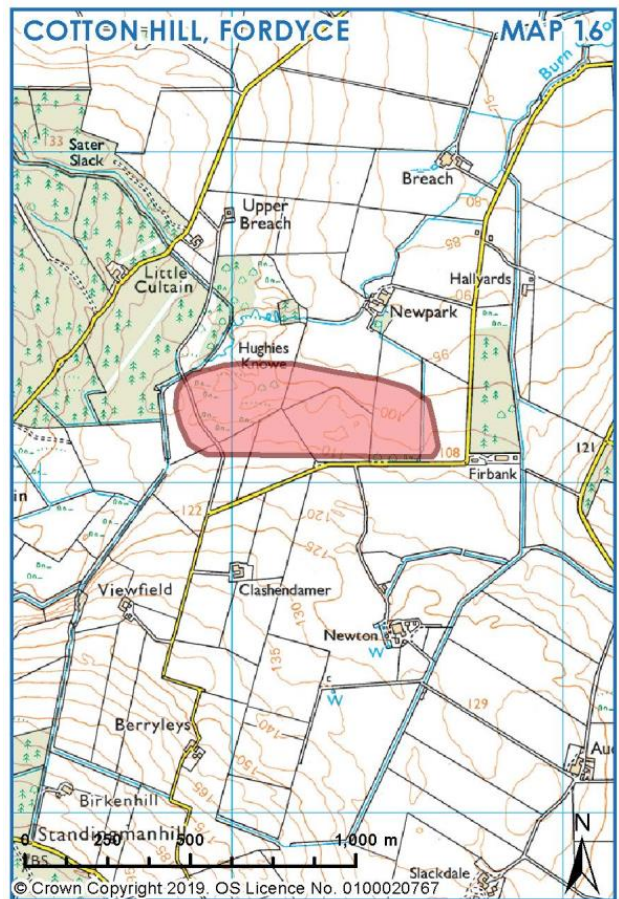
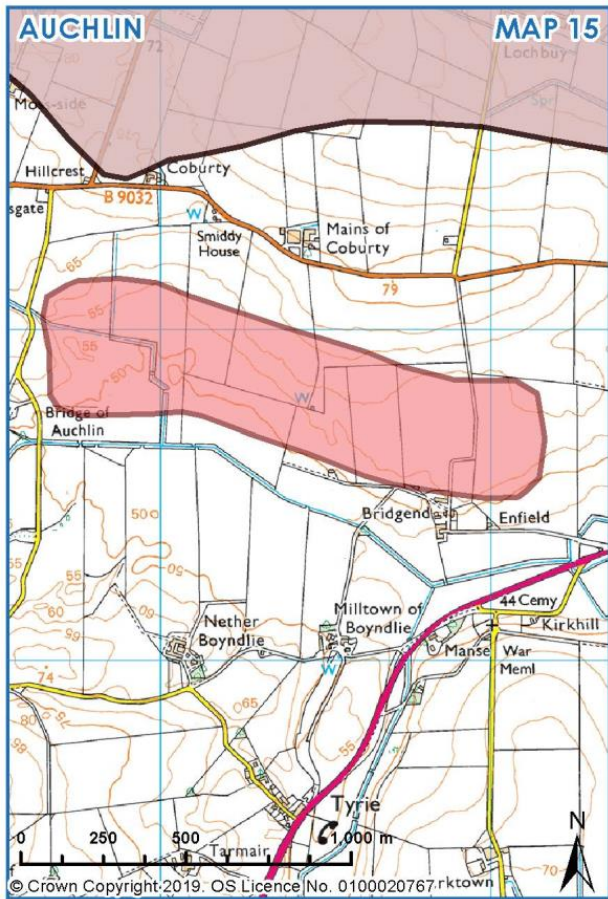
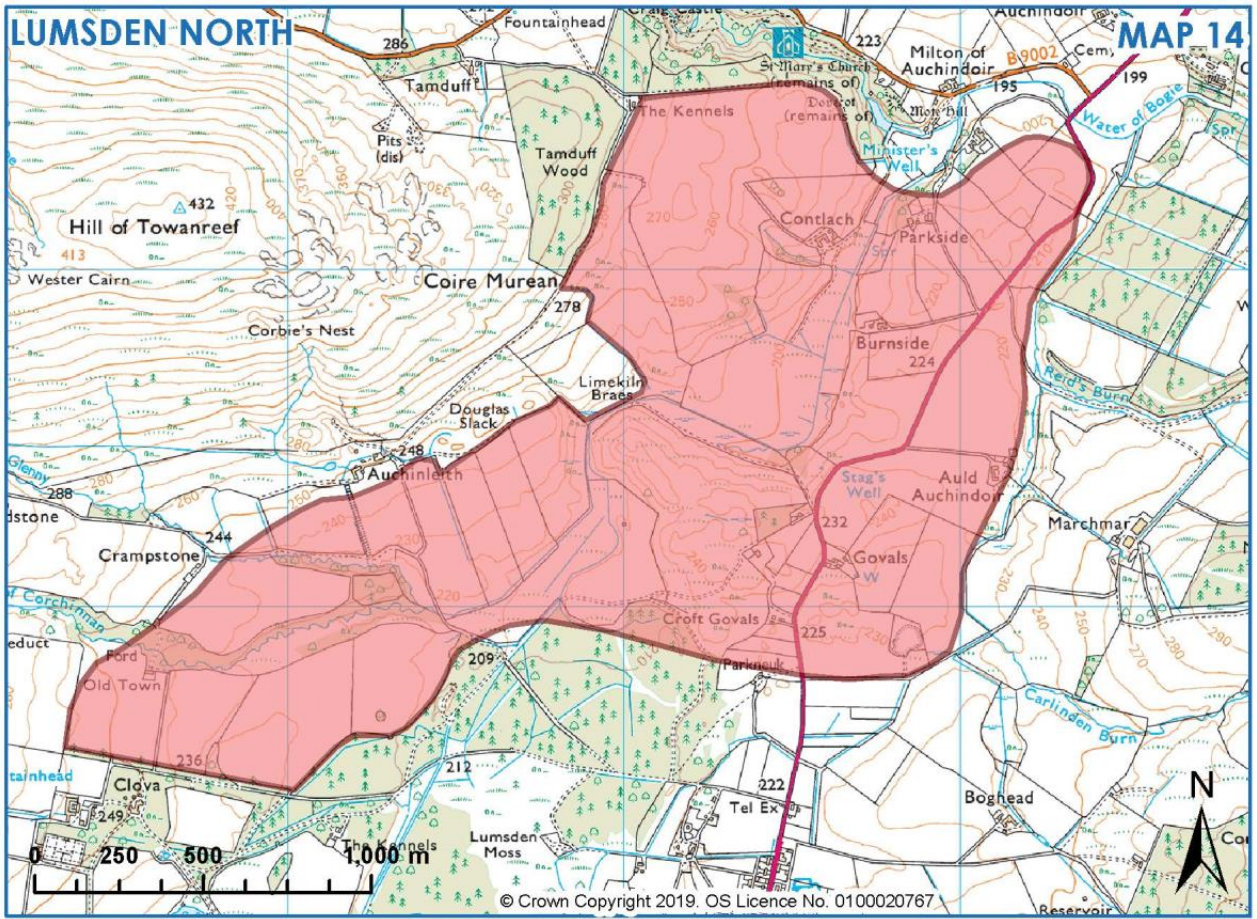
MAP 12

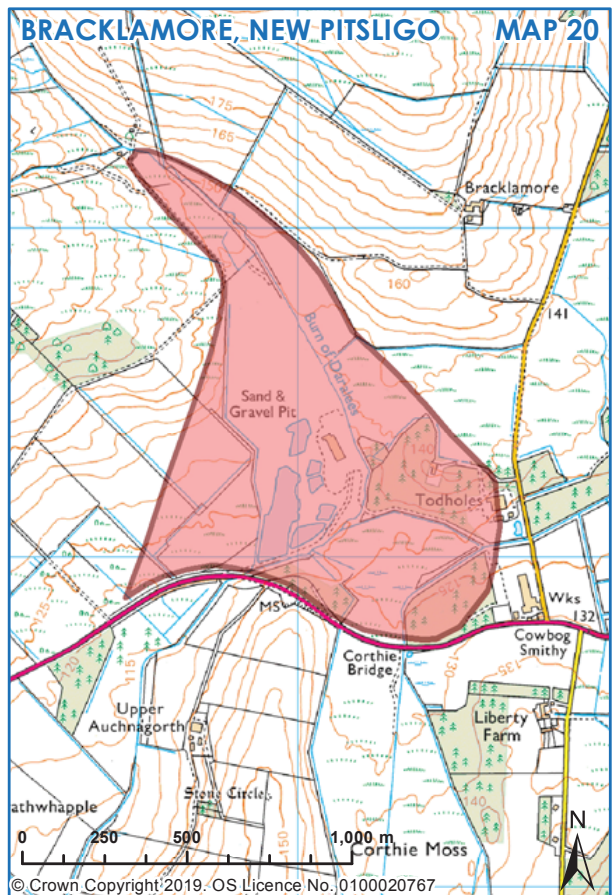
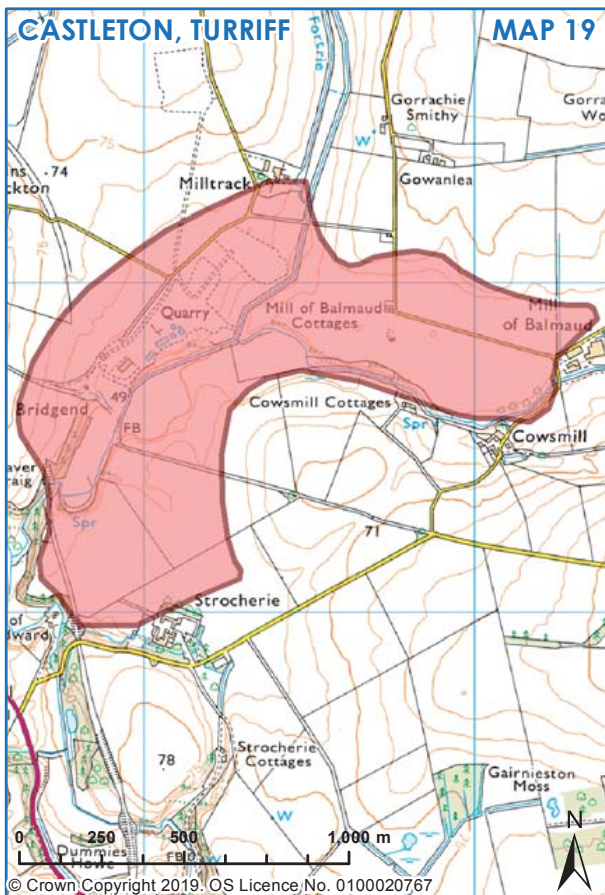
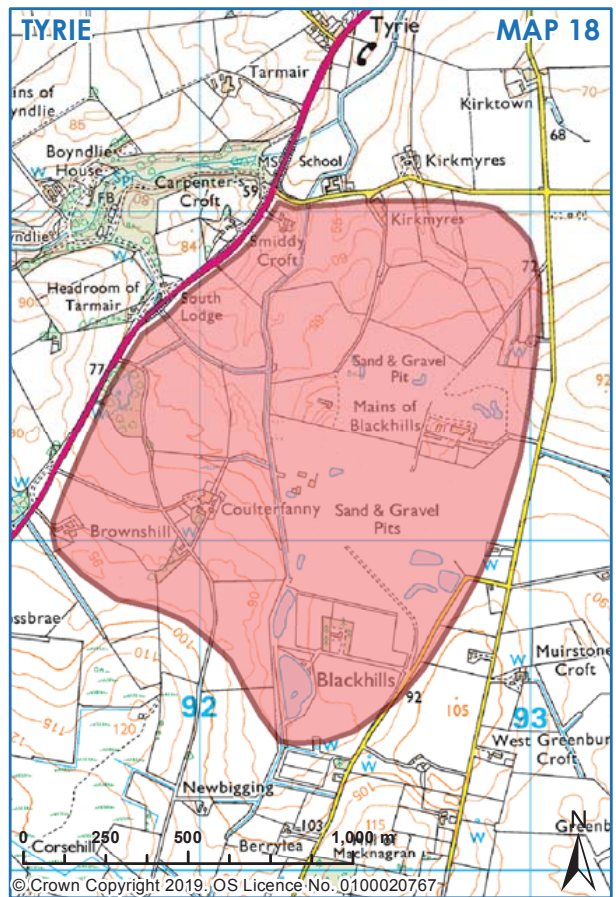
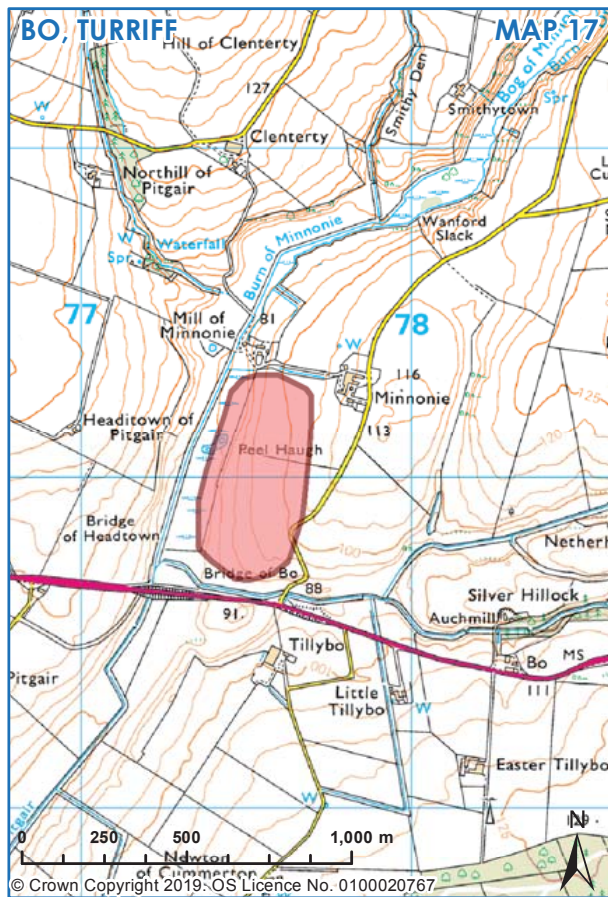


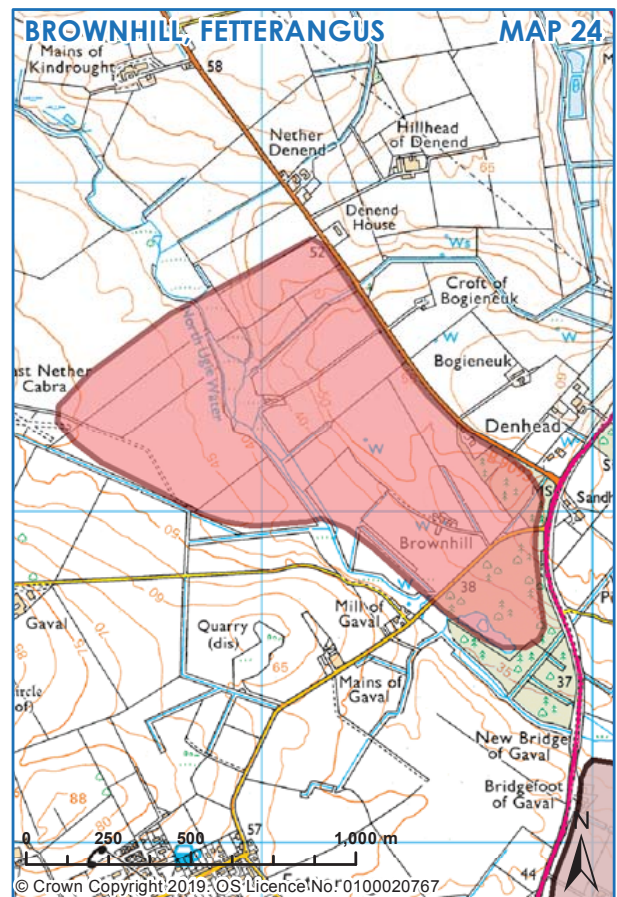
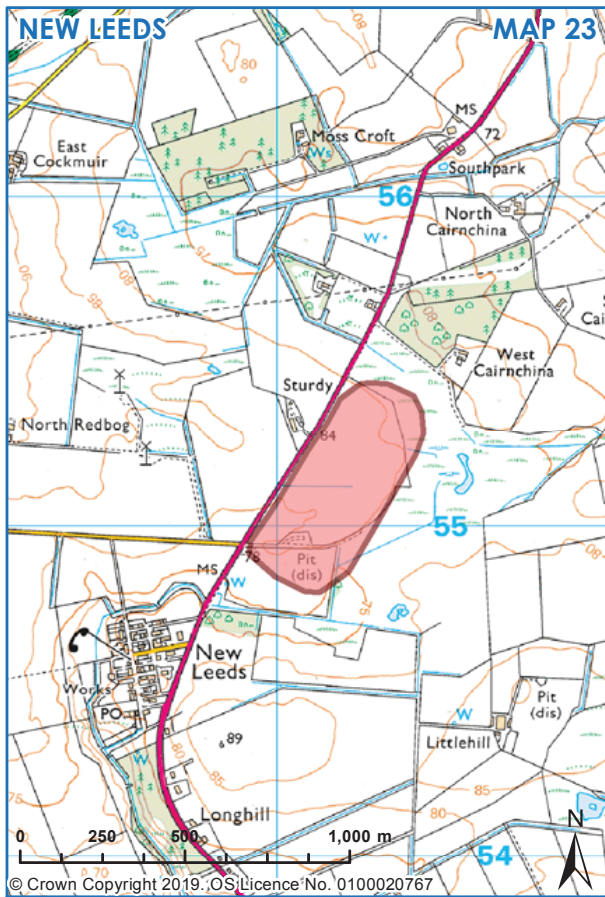
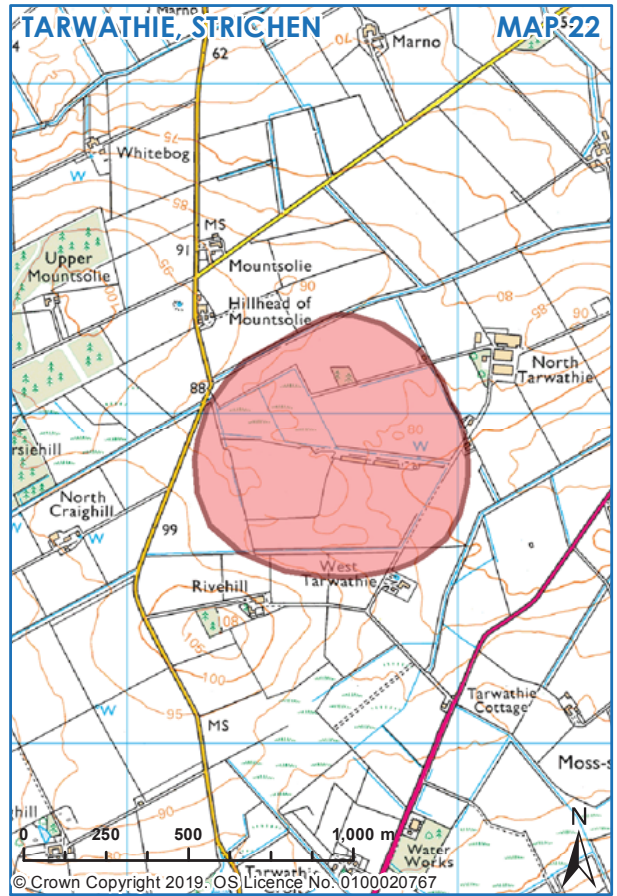
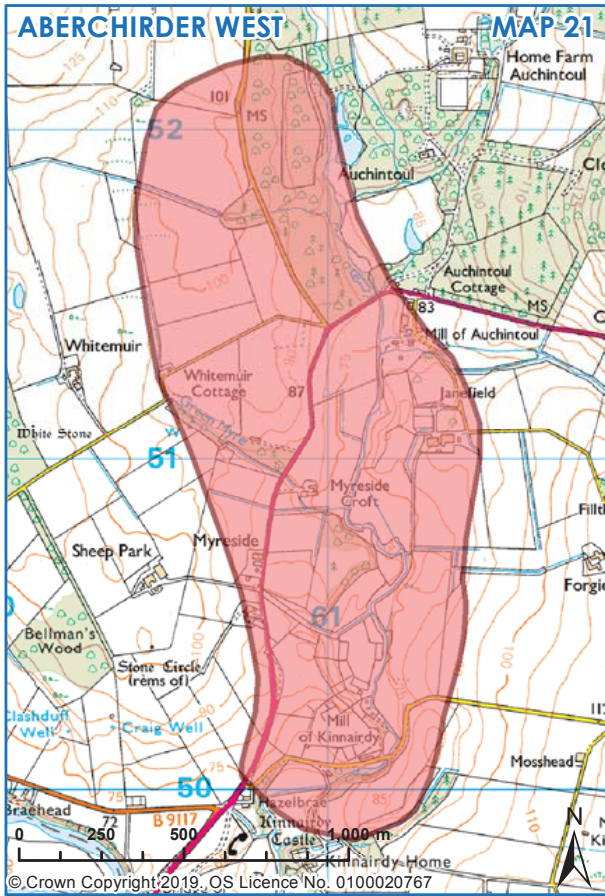
# HILL OF KINNOIR, HUNTLY

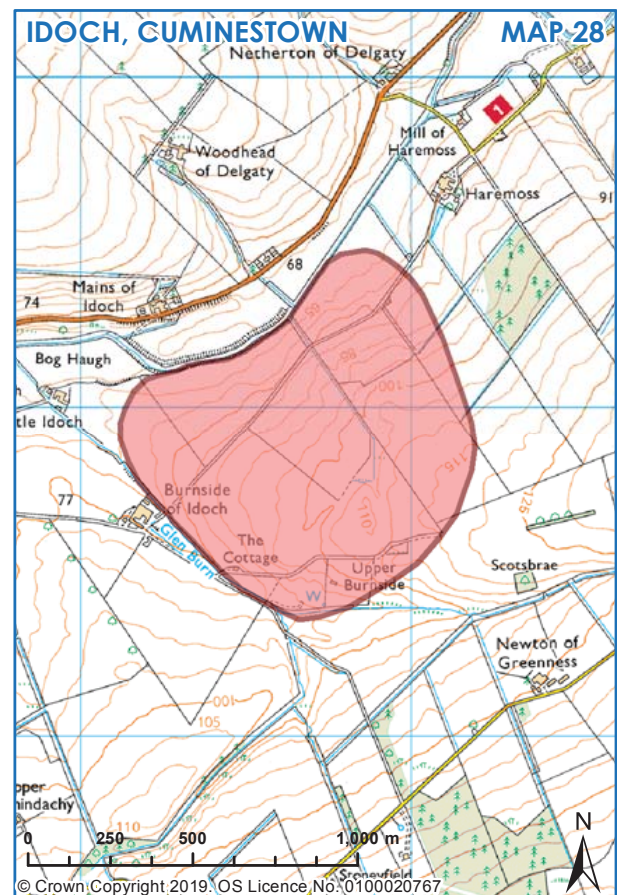
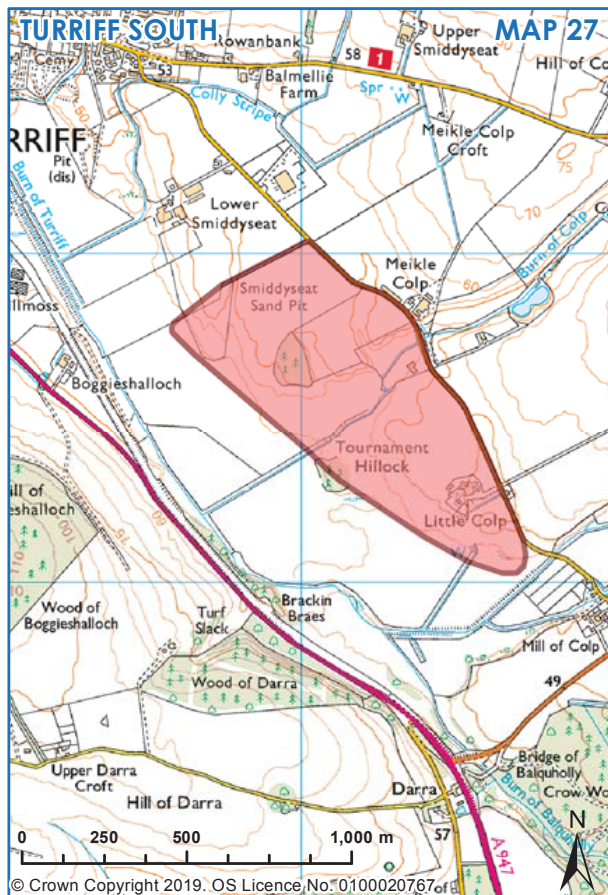
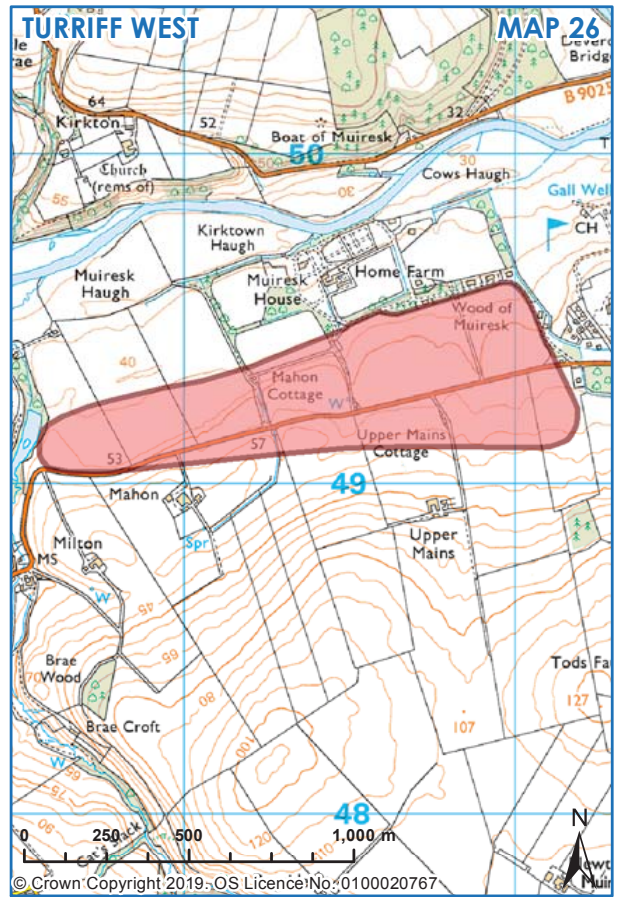
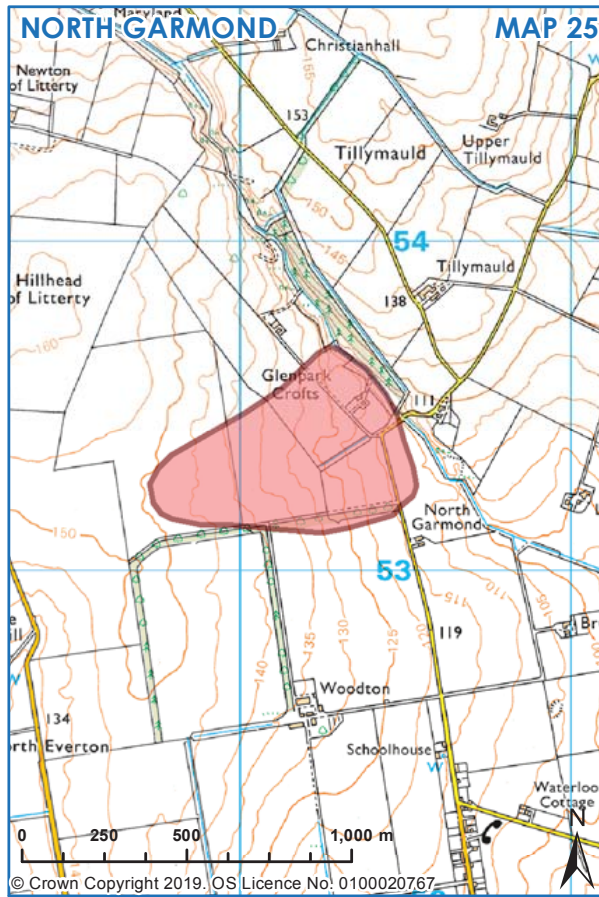
MAP 13



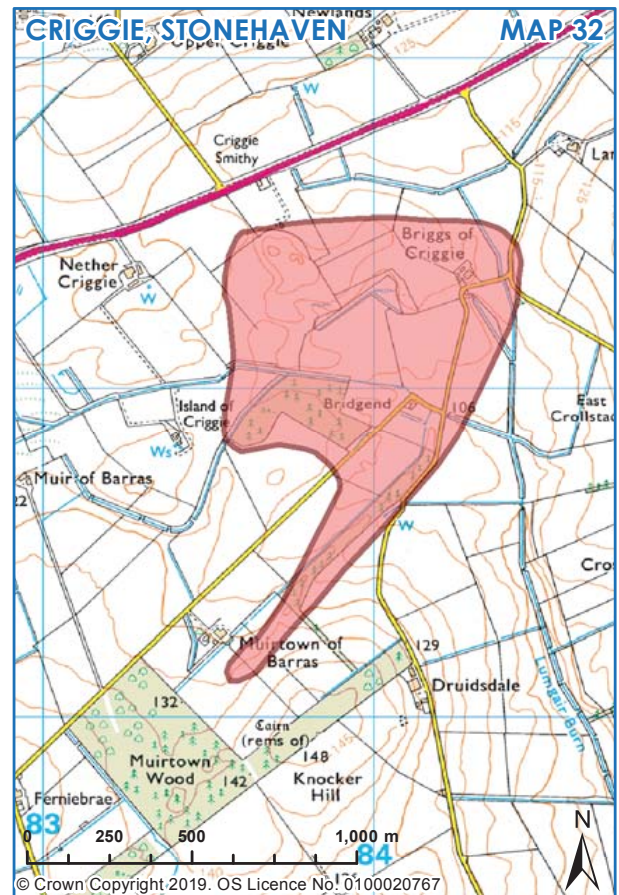
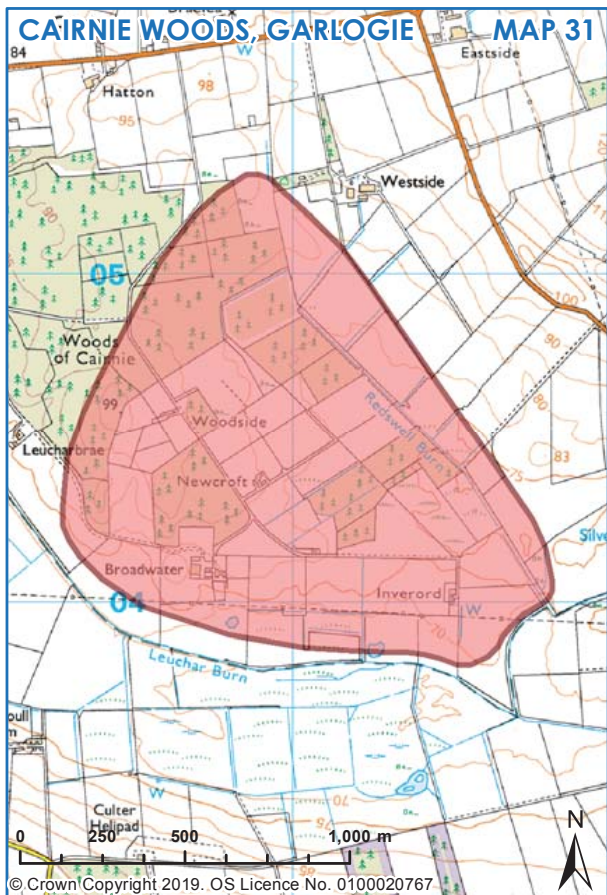
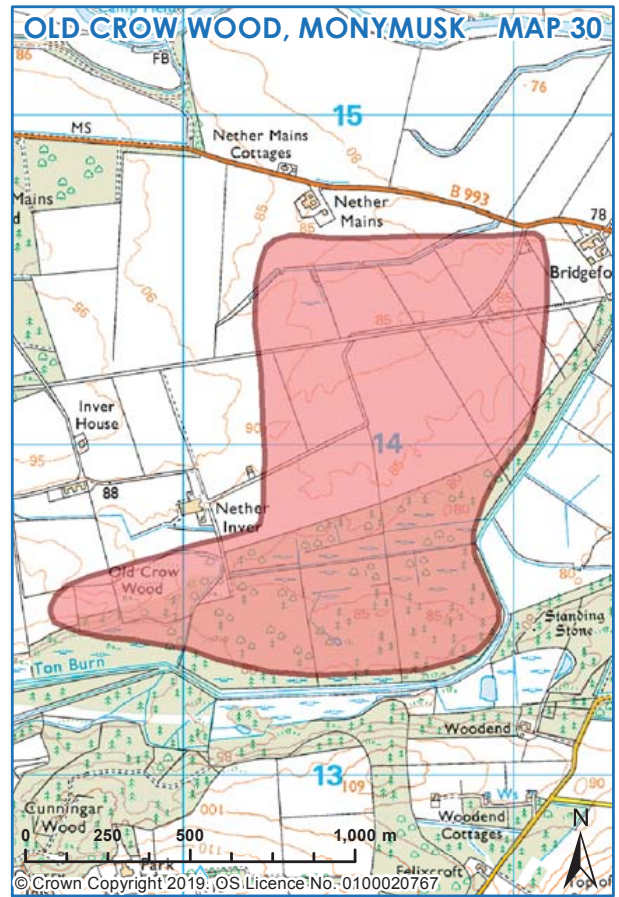
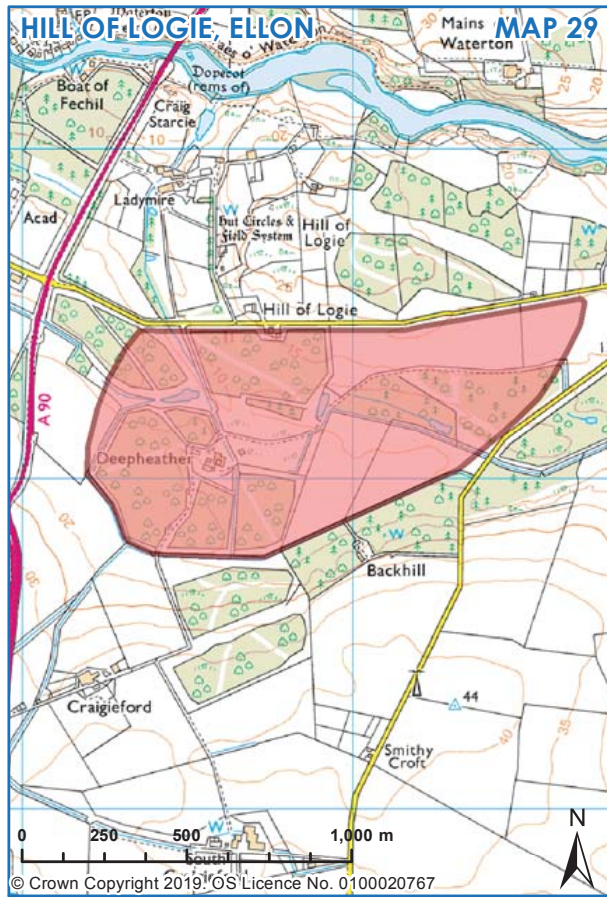


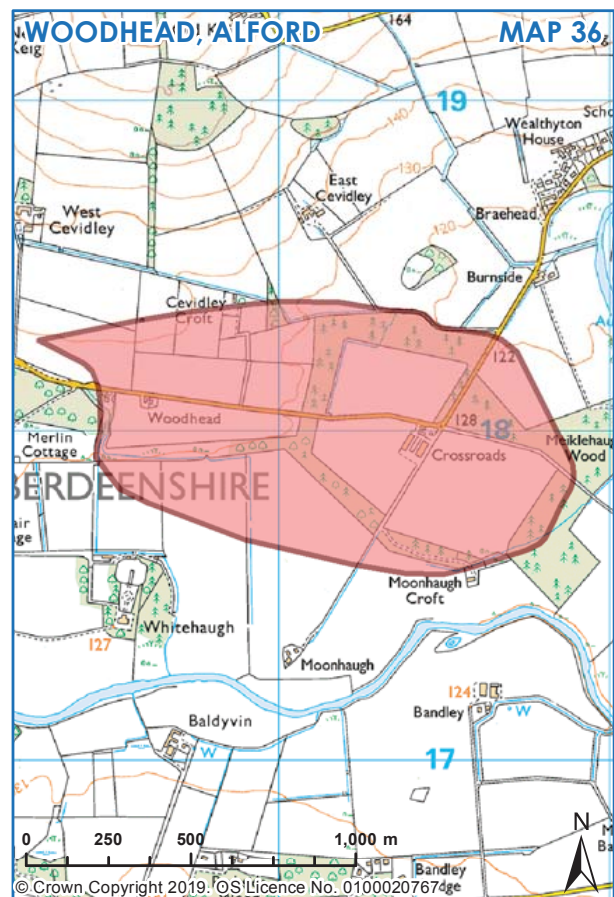
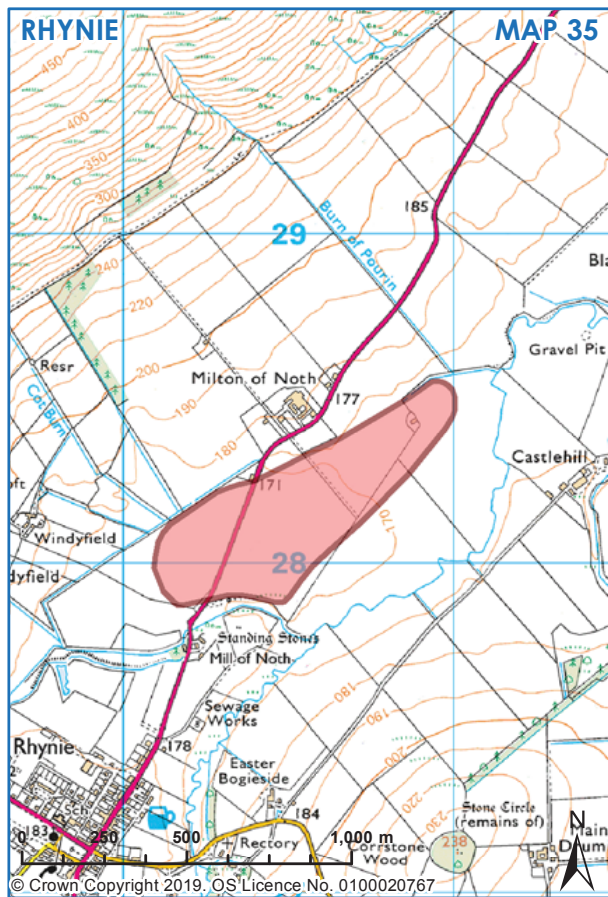
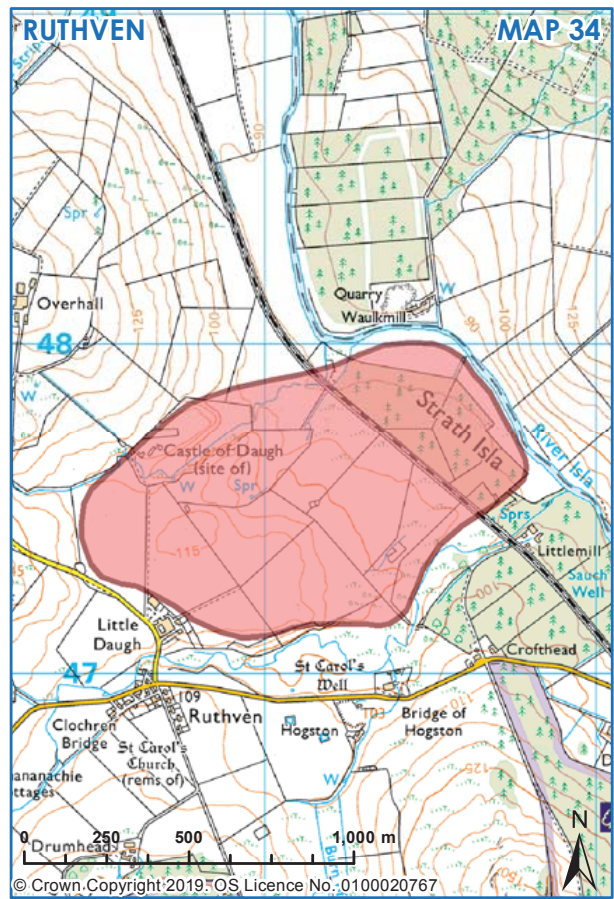
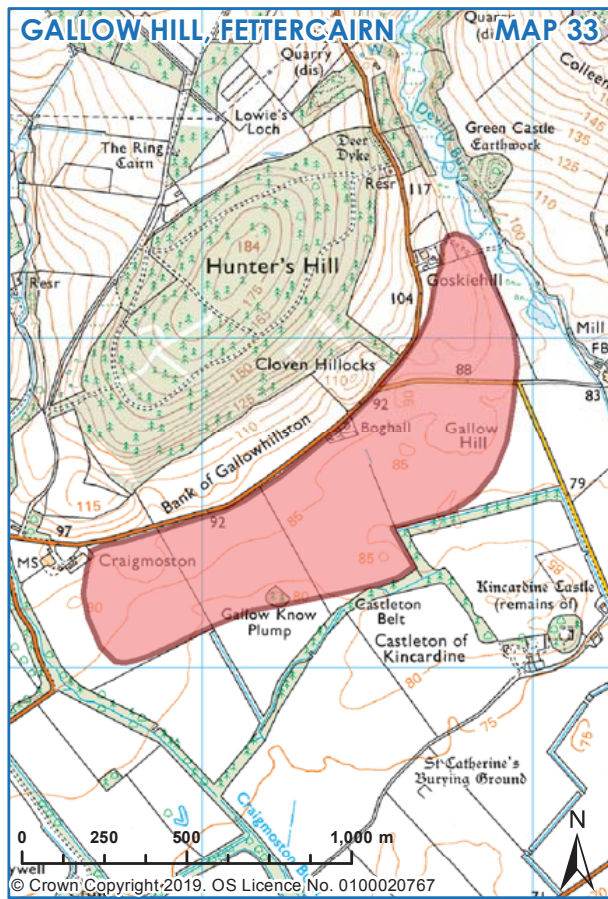


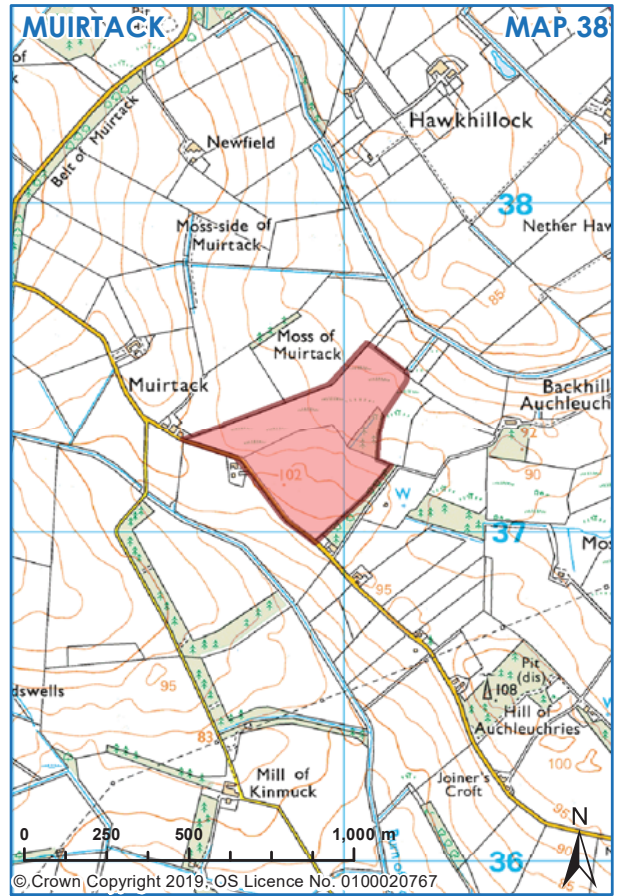
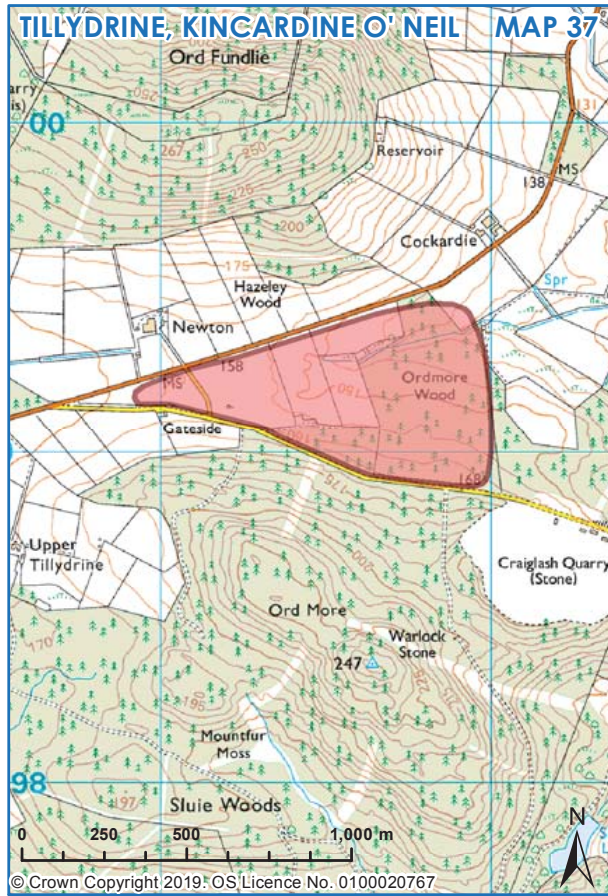






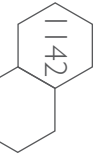


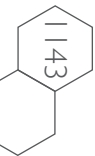




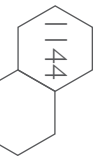
**Table 2 Safeguarded mineral resources**

| Name                  | Coordinates              |  |                                    | Map No. |
|-----------------------|--------------------------|--|------------------------------------|---------|
| Arthrath, Ellon       | NJ39768372               | Commercially viable precious metal deposits.   | Platinum and Nickel                | 1       |
| Foudland              | NJ 590 327 to NJ 620 340 | Large deposits available for further exploitation. Many quarries covered with large tips. Depths of workings greater than other quarries. Access is medium - good track to high level quarries, others distant. Low environ sensitivity as are remote from habitation. Quality varies (poorer between upper and lower level quarries). | Slate                              | 2       |
| Paradise, Kemnay      | NJ 7377 1693             | Disused. Light silver-grey colour, widely exported (e.g. Queen Victoria Memorial, London and Forth Railway Bridge 1885). Used as cladding for Scottish Parliament, Edinburgh (2004).   | Light silver-grey granite          | 3       |
| Tom's Forest, Kintore | NJ 762 170               | Foliated muscovite-biotite granite. Active, producing crushed rock aggregate.  | Foliated muscovite-biotite granite | 3       |
| Corskie, Gartly       | NJ 533 328               | Historic quarry in slate. Large deposits covering most of the Hill of Corskie. Resources within quarry area estimated as medium assuming no change in quality along strike. Further exploitation possible at greater depth. Medium access, forest roads. Low environ sensitivity as are remote from all habitation.                    | Slate                              | 4       |
| Cottonhill, Macduff   | NJ 724 639               | Active. Macduff Formation. Crushed rock aggregate.   | Macduff Formation (metamorphic)    | 5       |

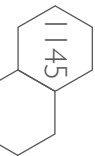




| Name                                     | Coordinates  |  |  | Map No. |
|--|--------------|--|--|---------|
| Peathill, New Pitsligo                   | NJ 8872 5504 | Historic quarries used for building. Light grey, porphyritic granite.  | Light grey porphyritic granite                     | 6       |
| Cairngall, Longside                      | NK 052 471   | Disused. 'Blue Peterhead', muscovite-biotite granite, some of the rock foliated, was widely used for decorative work and large monoliths.  | Blue Peterhead' muscovite-biotite granite          | 7       |
| Stirlinghill (Admiralty No 1), Peterhead | NK 1230 4150 | Active. Peterhead Granite. Pink with grey granite. Historic quarry, now producing aggregate and building stone.  | Pink with grey 'Peterhead Granite'                 | 8       |
| Blackhills, Longhaven, Peterhead         | NK 1150 3920 | Active. Producing crushed rock aggregate and dimension stone. Peterhead Granite, reddish-brown colour, widely exported during 19th century, throughout UK and abroad (e.g. Calton Club, London). | Red-brown 'Peterhead Granite'                      | 9       |
| Smiddyburn, Cross of Jackston            | NJ 738 331   | Active. Macduff Formation. Crushed rock aggregate.   | Macduff Formation (metamorphic)                    | 10      |
| Woodlands, Old Meldrum                   | NJ 796 328   | Active. Macduff Formation. Crushed rock aggregate, roadstone and other products.   | Macduff Formation (metamorphic)                    | 11      |
| Balmedie, Belhelvie                      | NJ 944 181   | Active. Gabbro and norite. Belhelvie Basic Intrusion. Crushed rock aggregate and other products (coated roadstone, subbase).   | Gabbro and norite of the Belhelvie Basic Intrusion | 12      |
| Pitcaple, Inverurie                      | NJ 729 268   | Active. Norite and gabbro-norite (Insch Mass). Crushed rock aggregate, coated roadstone, sub base.   | Norite and Gabbro-norite of the Insch Mass         | 13      |
| Lochhills, Parkhill                      |              | Active. Aggregate quarry.  |  | 14      |



| Name                          | Coordinates              |   |                          | Map No. |
|-------------------------------|--------------------------|---|--------------------------|---------|
| Corrennie, Tillyfourie        | NJ 6415 1192             | Active. Currently producing crushed rock aggregate, dimension stone, and armourstone. Distinctive red-pink colour with aligned fabric; stone was widely exported (e.g. Glasgow Municipal Buildings, 1887).  | Red-pink granite         | 15      |
| Tillyfourie, Tillyfourie      | NJ 6457 1285             | Extensive disused workings in grey granite.   | Grey granite             | 15      |
| North Mains, Findon           | NO 9425 9862             | Active.   | Granite                  | 16      |
| Blackhills of Cairnrobin      | NO 943 994               |   | Granite                  | 16      |
| Mains of Balfour, Fettercairn | NO3622 7735              | Sandstone, Teith Formation.   | Sandstone                | 17      |
| Pitcarry, Inverbervie         | NJ38267739               | Sandstone.  | Catterline formation     | 18      |
| Forth Hill, Laurencekirk      | NJ3771 7698              | Sandstone, Scone Formation.   | Sandstone                | 19      |
| Littlemill, Ruthven           |                          | Commercially viable precious metal deposits.  | Platinum and Nickel      | 20      |
| Avochie, Milton of Rothiemay  | NJ54194702               | Active. Granite. Producing crushed rock aggregate and building stone.   | Foliated biotite granite | 21      |
| Kirkney, Gartly               | NJ 503 317 to NJ 510 320 | Historic quarry in slate worked superficially. Very large deposits. Resources at least medium in size. Further extraction possible along strike ENE 075deg, assuming no change in quality. Further exploitation possible to greater depth. Second, less significant set of workings on south of hill at 350m. Main workings situated on north slopes. Poor access, no roads. Low environ sensitivity. | Slate                    | 22      |



| Name                         | Coordinates              |  |   | Map No. |
|------------------------------|--------------------------|--|---|---------|
| Wishach, Gartly              | NJ 577 331 to NJ 579 334 | Historic quarry in slate. Large (plenty) of resources for future exploration within the confines of each quarry and continuing along strike. Poor access, no road, but close forestry road although dense vegetation. Low environ sensitivity as are remote.   | Slate   | 23      |
| Quarry Hill, Rhyne           | NJ 4913 2543             |  | Quarry Hill Sandstone Formation (white, cemented freestone) | 24      |
| Quarryfield, Kildrummy       | NJ 4543 1837             | White, well-cemented freestone used extensively for building in the district.  | Quarry Hill Sandstone Formation (white, cemented freestone) | 25      |
| Craiglash, Kincardine O'Neil | NO 621 987               | Active. Queens Hill Formation. Crushed rock aggregate and other products (sub base, sea defences, coated roadstone).   | Queens Hill Formation (metamorphic)                         | 26      |
| Skares, Foundland            | NJ 590 327 to NJ 620 340 | Large deposits available for further exploitation. Many quarries covered with large tips. Depths of workings greater than other quarries. Access is medium - good track to high level quarries, others distant. Low environ sensitivity as are remote from habitation. Quality varies (poorer between upper and lower level quarries). | Slate   | 27      |
| Savock, Longside             | NK 066 425               | Active. Collieston Formation. Crushed rock aggregate, armourstone and other products (sub base).   | Collieston Formation (metamorphic).                         | 28      |

# MINERALS - SAFEGUARDING

# MAP KEY

