

***Staurothele monicae* in the Joshua Tree National Park (California, U.S.A.)**

Map collection



Staurothele monicae. Photo by Tim Wheeler.

Kerry Knudsen, Kocourková Jana*

*Czech University of Life Sciences Prague, Faculty of Environmental Sciences, Department of Ecology, Czech Republic

Abstract – *Staurothele monicae* is only known in North America. The distribution of *Staurothele monicae* is scattered in California. It is documented by 20 collections in the Mojave Desert in Joshua Tree. It grows on calcareous and non-calcareous rock; in Joshua Tree on gneiss and granite. The map of known distribution of *S. monicae* in Joshua Tree is presented. We compiled a detailed list of records based on GPS data.

Key words – *Staurothele monicae*, lichens, map of distribution, Mojave Desert, California

Authors – Kerry Knudsen¹, Kocourková Jana²

¹The Herbarium, Department of Botany & Plant Sciences, University of California Riverside, California 92521, U.S.A. – e-mail: Knudsen@ucr.edu

²University of Life Sciences Prague, Department of Ecology, Faculty of Environmental Sciences, Kamýcká 129, Praha 6 – Suchbát, CZ – 165 21, Czech Republic – e-mail: kocourkovaj@fzp.czu.cz

***Staurothele monicae* (Zahlbr.) Wetmore**

DESCRIPTION. – Thomson 2002.

WORLD DISTRIBUTION. – North America.

SUBSTRATE. – Calcareous and non-calcareous rock; in Joshua Tree on gneiss and granite.

NOTES. – The distribution of *Staurothele monicae* is scattered in California. It was described from the Santa Monica Mountains. It was reported from the Granite Mountains in the Mojave Desert (Knudsen and Werth 2008). It is documented by 20 collections in the Mojave Desert in Joshua Tree.

DISTRIBUTION. – Juniper Flats, Hidden Valley, Little San Bernardino Mountains (Berdo Canyon, Eureka Peak), Lost Horse Mountains, Queen Mountain, Sheep's Pass, Saddle Rock, Skull Rock, Stirrup Tank, Wonderland of Rocks (near west entrance).

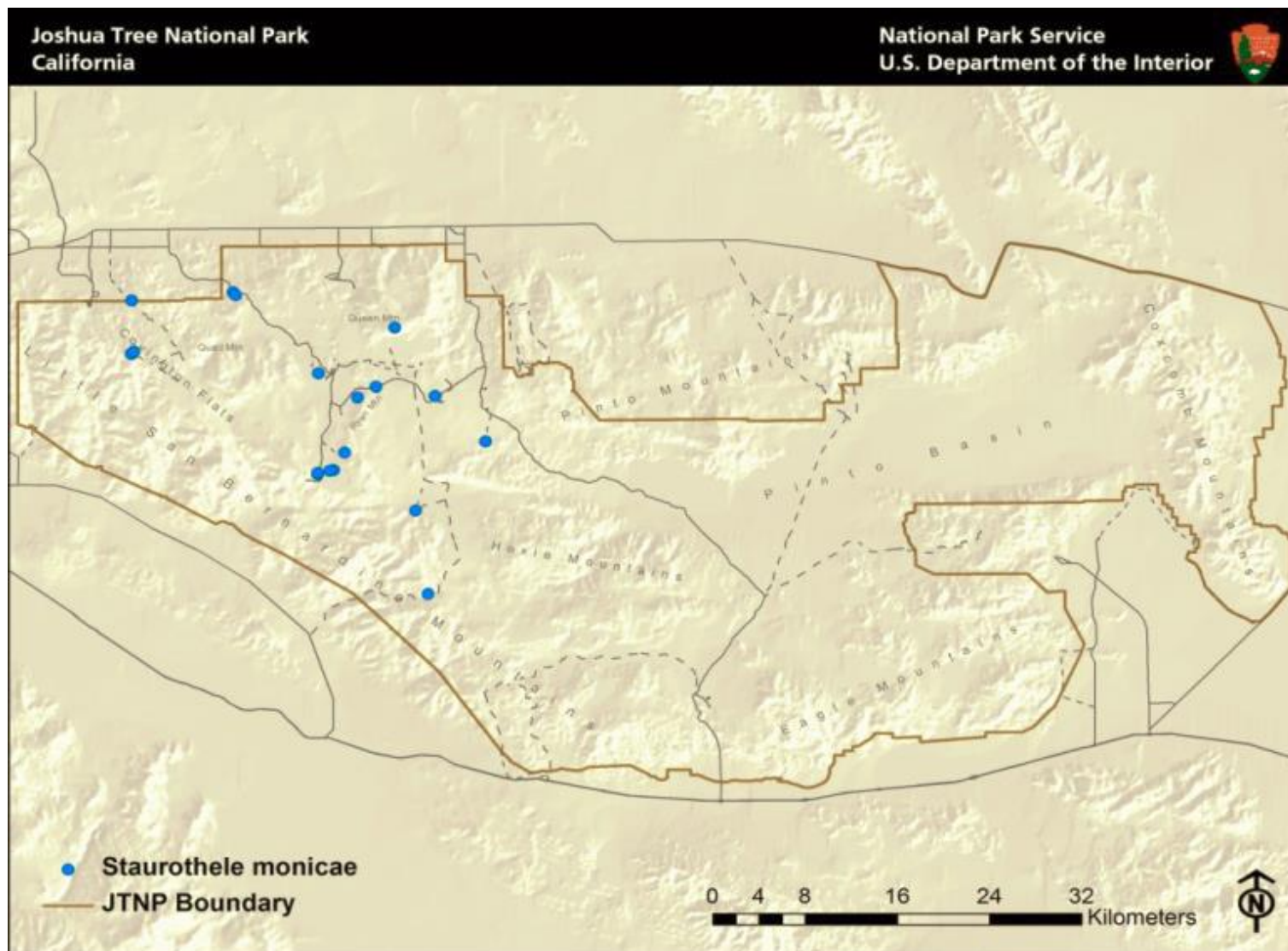
LITERATURE CITED

Thomson, J.W. 2002. *Staurothele*. In: T.H. Nash III, B.D. Ryan, C. Gries, and F. Bungartz (eds.) Lichen Flora of the Greater Sonoran Desert Region 1: 468–472. Lichens Unlimited, Tempe, AZ.

ACKNOWLEDGEMENTS

The work of Kerry Knudsen was funded by a co-operative agreement between Joshua Tree National Park and the University of California at Riverside (UCR). The work of Jana Kocourková was supported financially by the KONTAKT II, Program of International Cooperation in Research and development for scientific cooperation between the CR and USA, LH 11057 from Ministry of Education, Youth and Sports of the Czech Republic.

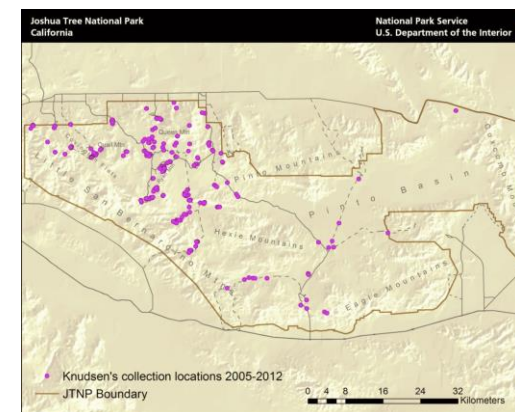
Staurothele monicae



Known distribution of *Staurothele monicae* in JTNP.



Location of Joshua Tree National Park in Southern California



All 238 of Knudsen's and Kocourková's lichen collection sites throughout Joshua Tree National Park between the years of 2005 and 2012.

Map collection, maps made in software ArcGIS, 10.1; electronic form, file type pdf.