

# REMNANT VEGETATION of the DARWIN MUNICIPALITY

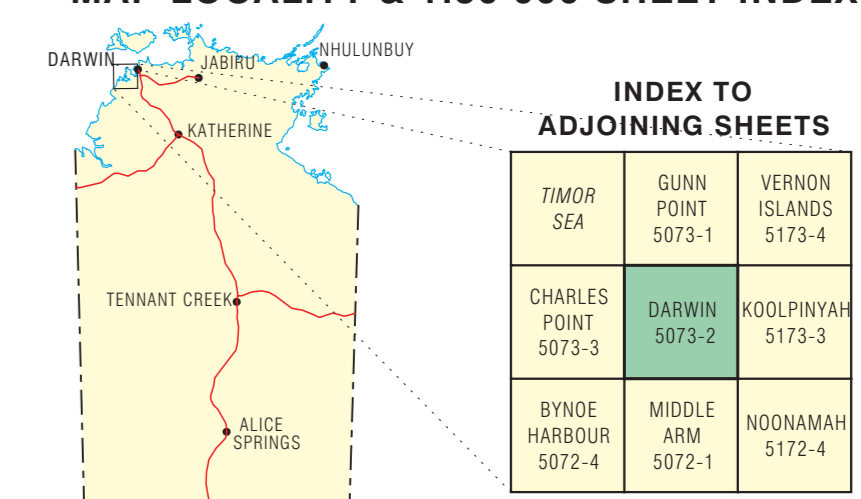
## VEGETATION COMMUNITY DESCRIPTIONS

- MONSOON RAINFOREST**
- 1 Mixed species monsoon rainforest associated with permanent moisture. Closed canopy 20-25m tall dominated by evergreen species, including *Acacia auriculiformis*, *Carophyllum soulatii*, *Carpentaria acuminata*, *Horsfieldia australiana* and *Syzygium nervosum*.
  - 2 Mixed species coastal monsoon rainforest associated with seasonally dry habitats. Deciduous species including *Pelltophorum pterocarpum*, *Terminalia microcarpa* and *Ficus virens* dominate the seasonally closed canopy to 10m tall, with taller emergents.
  - 3 *Acacia auriculiformis* open forest to closed forest. A transition community generally associated with nearby rainforest.
  - 4 A modified coastal rainforest community allied to community 2. Naturalised exotic trees are present, with some enrichment planting of local native species.
  - 5 Regeneration dry coastal monsoon rainforest, including areas of rehabilitation and enrichment planting of local native species.
- MANGROVES**
- 6 *Sonneratia alba* open forest to woodland to 12m tall. The seaward mangrove zone.
  - 7 Coastal *Rhizophora stylosa* closed forest to 16m tall, commonly in pure stands forming shoreline zone.
  - 8 *Rhizophora stylosa*, *Bruguiera exaristata*, *Campostemon schultzei* closed forest to open forest. This community grows along tidal creeks and includes adjacent transitional zones.
  - 9 *Ceriops tagal*, *Avicennia marina*, *Lumnitzera racemosa*, *Excoecaria ovalis* low closed forest generally 2-7m tall. Hinterland mangrove zone; the species may occur together or as locally pure stands.
  - 10 Salt flats. Hypersaline flats of bare sandy mud, with occasional shrubs such as *Batis argyroloba* and *Suaeda arbusculoides*, and scattered stunted mangroves.
- PAPERBARK COMMUNITIES**
- 11 *Melaleuca cajuputi* closed forest swamp.
  - 12 *Melaleuca leucadendra*, *Melaleuca cajuputi*, *Acacia auriculiformis* closed forest swamp.
  - 13 *Melaleuca leucadendra* stunted very low open woodland.
  - 14 Regeneration *Melaleuca viridiflora* low woodland to low open woodland with *Pandanus spiralis* and *Lophostemon lachnifolius*. Commonly includes areas of seasonal swamp.
- EUCALYPTUS COMMUNITIES**
- 15 *Eucalyptus tetradonta*, *E. miniata* open forest with *Sorghum intrans* and *Heteropogon triticeus* grassland understorey.
  - 16 *Eucalyptus papuana* open forest, with *Acacia auriculiformis* and *E. polycarpa*.
  - 17 *Eucalyptus tetradonta*, *E. miniata* woodland to low woodland, with mixed species mid stratum and grassland understorey.
  - 18a *Eucalyptus miniata*, *E. papuana*, *E. polycarpa* mixed species low woodland, with *Pennisetum polystachion* grassland. Contains disturbed or cleared areas.
  - 18b *Eucalyptus miniata*, *E. tetradonta*, *E. bleeseri* woodland to open woodland with sparse mid layer and dense grassland understorey.
  - 19 *Eucalyptus tectifica* low open woodland, with *E. clavifera*, *Xanthostemon paradoxus*, and grassland understorey.
  - 20 *Eucalyptus papuana*, *E. polycarpa*, *E. tetradonta*, *Pandanus spiralis* mixed species low woodland to low open woodland with grassland/scrubland understorey. A transition community.
- LOPHOSTEMON COMMUNITIES**
- 21 *Lophostemon lachnifolius* mixed species open forest with *Acacia auriculiformis* and *Melaleuca leucadendra*. A transition community.
  - 22 *Lophostemon lachnifolius*, *Pandanus spiralis* open forest, with *Sorghum intrans* and *Pennisetum polystachion* grassland understorey, and mixed shrubs and herbs.
  - 23 *Lophostemon lachnifolius* mixed species very low open woodland with *Heteropogon triticeus*, *Themeda triandra* and *Eriachne burkittii* grassland.
- PANDANUS COMMUNITIES**
- 24 *Pandanus spiralis* low woodland to very low open woodland, with *Lophostemon lachnifolius* and *Grevillea pteridifolia*. Ground layer dominated by mixed species grasses and sedges.
- MIXED SPECIES WOODLAND TO SHRUBLAND**
- 25 *Eucalyptus clavifera*, *E. polycarpa*, *E. tectifica* mixed species low woodland to very low open woodland. Understorey mixed species shrubs and grasses.
  - 26 Regeneration *Buchanania obovata*, *Cochlospermum fraseri*, *Calyx distipulata* mixed species very low open woodland/shrubland. Includes areas of grassland and disturbed areas.
- HERBLAND/GRASSLAND**
- 27 *Murdannia vaginata*, *Bothriochloa bladhii* closed hermland/grassland. Seasonal blacksoil swamp, with mixed species grasses, sedges and herbs.
- GRASSLAND**
- 28 *Sorghum intrans*, *Eriachne burkittii*, *Heteropogon contortus* mixed species grassland, with regeneration very low open woodland includes cleared or disturbed areas.
  - 29 *Sorghum intrans* grassland, with *Yakira nulla*, *Mnesithea rottboelloides* and *Aristida holathera*.
  - 30 *Plectrochne purpurea* hummock grassland with *Eriachne contorta* and *Petalostigma quadriloculare*, and scattered very low open woodland.
  - 31 *Pennisetum polystachion*, *Eriachne burkittii*, *Fuirena ciliaris*, *Pseudopogonatherum contortum* closed grassland with scattered low trees.
  - 32 *Themeda triandra* closed grassland with scattered very low open woodland.
  - 33 *Bothriochloa bladhii*, *Psathyrochloa spiroseca* closed grassland, with *Eleocharis sundaica*. Seasonal swamp fringing permanent lagoon.
  - 34 *Ischaemum australe* closed grassland seasonal swamp with *Bothriochloa bladhii*, *Xerochloa imberbis* and sedges including *Fimbristylis littoralis* and *Eleocharis spiralis*.
- GRASSLAND/SEDGELAND**
- 35 Closed grassland/sedgeland community fringing extensive salt flats.
- INTRODUCED SPECIES**
- 36 *Senna alata* tall closed shrubland 3-4 tall with *Senna obtusifolia*, *Crotalaria goreensis* and occasionally *Mimosa pigra*.
  - 37 *Pennisetum polystachion* closed grassland with *Pennisetum pedicellatum*. Other species include *Andropogon gangeticus*, shrub *Ascyronema americana* and vine *Calopogon mucronatus* and *Centrosema pubescens*.
  - 38 *Leucaena leucocephala* tall closed shrubland to low closed forest, generally in pure stands to 12m tall.

## LEGEND

- DARWIN: Vegetation Community Boundary
- Population Centre / Community
- Watercourse
- Dam Or Water-hole
- Cadastral boundary
- Administration boundary
- Municipal / Shire boundary
- Gas pipeline
- Railway
- Power transmission line
- Highway
- Road sealed
- Road unsealed / Track
- Coastline
- Reef

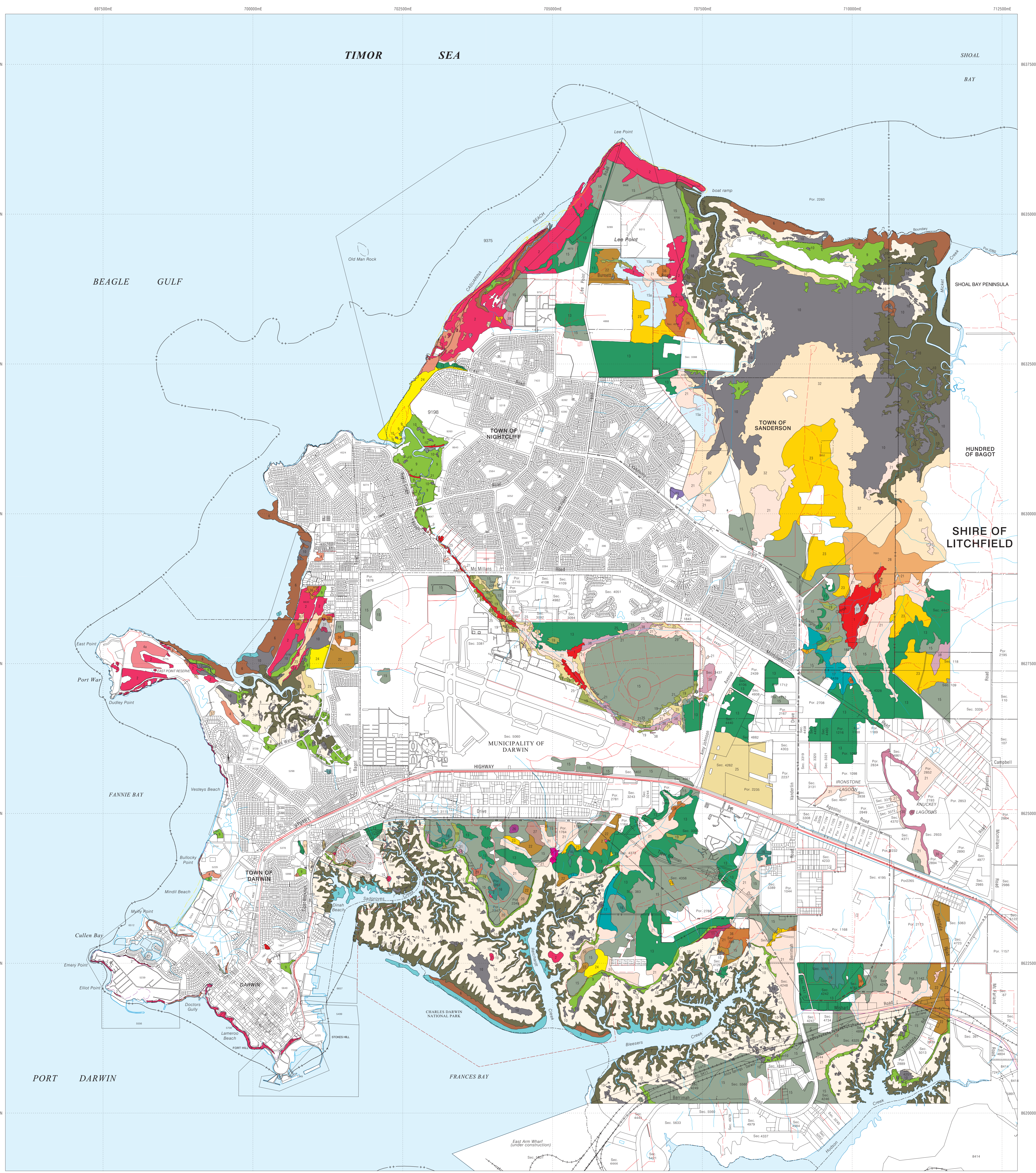
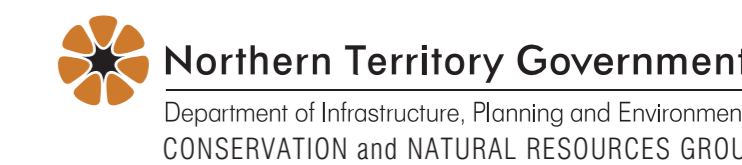
## MAP LOCALITY & 1:50 000 SHEET INDEX



This map was produced on the Geocentric Datum of Australia 1994 (GDA 94)

This product and all material forming part of it is copyright belonging to the Northern Territory of Australia. You may use this material for your personal, non-commercial use or use it within your organisation for non-commercial purposes, provided that an appropriate acknowledgment is made and the material is not altered in any way. Subject to the fair dealing provisions of the Copyright Act 1969, you must not make any other use of this product (including copying or reproducing it or part of it in any way) unless you have the written permission of the Northern Territory of Australia to do so.

The Northern Territory of Australia does not warrant that the product or any part of it is correct or complete and will not be liable for any loss damage or injury suffered by any person as a result of its inaccuracy or incompleteness.



This project has been funded through the SAVE THE BUSH component of the NATIONAL LANDSCAPE PROGRAM.  
Resolution of Vegetation Unit boundaries is only valid at 1:25 000.  
Enlargement will not result in greater accuracy.  
THIS MAP IS NOT SUITABLE FOR CADASTRAL PURPOSES.

Vegetation Communities by J. Brock, GREENING AUSTRALIA NT, Natural Systems Division, using Microstation graphic applications.  
Design File: Darwin\_Remnant\_Veg\_m52.  
Plot File: Darwin\_25k\_Remnant\_Veg

For further information contact:  
Principal Scientist, Land & Vegetation, Natural Systems Division, Conservation and Natural Resources Group, Department of Infrastructure, Planning and Environment, Ph. (08) 8999 4579, Fax. (08) 8999 3667, Goyder Centre, Chung Wah Terrace, Palmerston, Northern Territory of Australia.

Published and available from:  
Conservation and Natural Resources Group, Department of Infrastructure, Planning and Environment, Goyder Centre, Chung Wah Terrace, Palmerston, Northern Territory of Australia, February 2004.

Bibliographic reference:  
J. BROCK "Remnant Vegetation Darwin Municipality" GREENING AUSTRALIA(NT) 1994 - 1995.  
NOTE: Vegetation patterns and cleared areas were interpreted from 1:5000 colour and infra-red rectified aerial photography taken in 1986. Any clearing after this date is not shown.

Auslig Topo-25k data supplied through Land Information Services, Department of Infrastructure, Planning and Environment, Darwin, Northern Territory of Australia.