



Journal homepage: www.sciencearchives.org

ISSN: 2582-6697



Original Research Article

<http://dx.doi.org/10.47587/SA.2021.2107>



A preliminary exploration of Kudumulavari palli vascular flora, Peddamandyam mandal, Chittoor district, Andhra Pradesh, India

Paradesi Anjaneyulu

*Biodiversity Conservation Division Lab, Department of Botany,
Sri Krishnadevaraya University, Ananthapuramu, Andhra Pradesh, India,*

*Corresponding author: bcdanji@gmail.com

Received: Feb 15, 2021 / Revised: Mar 15, 2021 / Accepted: Mar 19, 2021

Abstract

In the present investigation, 100 vascular plants were deeply explored and recorded from the surroundings of Kudumulavari palli. The assessment was done by covering different habitats; and provided detailed information with Scientific name, Family, Habit, Habitat, Abundance, and associate plants along with pictorial evidence.

Keywords Kudumulavari palli, Vascular flora and Exploration

Introduction

The floristic explorations will provide information about the updated nomenclature, abundance, and distribution; and have the paramount importance in understanding the plant diversity, helpful in identifying the source for different products like medicine, fibre, gums, etc., the plants are a source of food, shelter clothing, and medicine which are the basic need for the existence of human beings on the planet; Flora is key components of the global ecosystem, are now severe threat due to over-exploitation by human activities urbanization and industrialization, etc., The natural wealth of forests are depleting at an alarming rate accompanied the species loss, resulting in an imbalance of natural environment. In this contest, there is an urgent need for exploration and documentation of plant resources for the social, economic, and cultural growth of any country (Pullaiah et al. 2018).

Explored and collected plants intensively throughout the presidency including Telugu speaking districts and specimens were housed in K, CAL, MH, and DD; and wrote the "Flora of Presidency of Madras"(Gamble et al. 1915-1935).

Exploration of flora by plant taxonomists is proverbial throughout the world to have information about the plants. Flora is a compilation of all plant species

growing in any geographic area. Through these floristic studies, valuable data is recorded which could be used as a reference for future studies. Floristic studies are helpful in the proper identification of plant-wealth for their utilization on a scientific and systematic basis. The identification of local plants along with the description of an area is very important because it can show specific species of the local area and their occurrence, growing season, species hardness, distinct species, finding new species and the effect of climatic conditions like drought and overgrazing on vegetation. The study of floristic composition of the vegetation is crucial for conservation management and the ecologically sustainable management of natural resources that provides the starting point for more detailed study. It aids in the identification and correct naming of species, essential resources for biodiversity estimates and biogeographic studies. Furthermore, this information provides important public outreach and fundamental information to use in addressing the biodiversity crisis. Floristic study and diversity assessments are necessary to understand the present diversity status and conservation of biodiversity. Floristic studies acquire increasing importance in recent years in response to the need of developing

and under developing countries to assess their plant wealth (Siddique et al. 2014)

Methodology

All plants are identified with Flora of Presidency of Madras, Flora of Andhra Pradesh, Trees of Andhra Pradesh through

their habit and habitat information and with their photographs; and recorded information about Scientific name, Family, Habit, Habitat, Abundance and with their associate plants (Table-1; Plate-1; Plate-2; Plate-3; Plate-4; Plate-5; Plate-6; Plate-7; Plate-8; Plate-9; Plate-10; Plate-11)

Table 1 Enumeration list of vascular plants

S. No.	Scientific Name	Family	Habit	Habitat	Abundance	Associate Plants
1	<i>Acalypha scabrosa</i> Sw.	Euphorbiaceae	Shrub	Among rocks of mounds	Occasional	<i>Cymbopogon caesius</i>
2	<i>Ageratum conyzoides</i> L.	Asteraceae	Herb	Along water bodies	Occasional	<i>Cyanotis axillaris</i>
3	<i>Alangium salviifolium</i> (L.f.) Wangerin	Cornaceae	Tree	Along streams and fields	Rare	<i>Borassus flabellifer</i>
4	<i>Andrographis serpyllifolia</i> (Rottler ex Vahl) Wight	Acanthaceae	Herb	Forest peripheries	Rare	<i>Oldelandia umbellate</i>
5	<i>Aristida setacea</i> Retz.	Poaceae	Herb	Along bunds of fields and other sun exposing areas of hills	Common	<i>Cymbopogon caesius</i>
6	<i>Azadirachta indica</i> A.Juss.	Fabaceae	Tree	Fields and forest outskirts streams	Common	<i>Phoenix sylvestris</i>
7	<i>Boerhavia diffusa</i> L.	Nyctaginaceae	Herb	Fields and forest peripheries	Common	<i>Phyllanthus maderaspatanus</i>
8	<i>Borassus flabellifer</i> L.	Arecaceae	Tree	Along canals	Occasional	<i>Phoenix sylvestris</i>
9	<i>Calotropis gigantea</i> (L.) W.T.Aiton	Apocynaceae	Shrub	Fields and forest peripheries	Common	<i>Lantana camera</i>
10	<i>Caralluma adscendens</i> (Roxb.) Haw.	Apocynaceae	Shrub	Wastelands and forest outskirts	Rare	<i>Catunaregum spinosa</i>
11	<i>Carissa spinarum</i> L.	Apocynaceae	Shrub	Fields and Forest outskirts	Occasional	<i>Lantana camera</i>
12	<i>Cascabela thevetia</i> (L.) Lippold	Apocynaceae	Shrub	Along canals	Rare	<i>Catunaregum spinosa</i>
13	<i>Cassia fistula</i> L.	Fabaceae	Tree	An hill slopes	Occasional	<i>Canthium dicoccum</i>
14	<i>Catunaregam spinosa</i> (Thunb.) Tirveng.	Rubiaceae	Shrub	Forest outskirts	Common	<i>Flacourtia indica</i>
15	<i>Chloris barbata</i> Sw.	Poaceae	Herb	In Fields	Common	<i>Commelina undulate</i>
16	<i>Chrysopogon fulvus</i> (Spreng.) Chiov.	Poaceae	Herb	Bunds of fields, Wastelands and sun exposing rocky hills	Common	<i>Lophopogon tridentatus</i>
17	<i>Cissus quadrangularis</i> L.	Vitaceae	Climber	Forest outskirts	Occasional	<i>Flacourtia indica</i>
18	<i>Cleome gynandra</i> L.	Cleomaceae	Herb	Along human habitations and fields	Common	<i>Cleome monophylla</i>
19	<i>Cleome monophylla</i> L.	Cleomaceae	Herb	In Fields	Occasional	<i>Perotis indica</i> and <i>Spermacoe articularis</i>
20	<i>Cleome viscosa</i> L.	Cleomaceae	Herb	Along human habitations and fields	Common	<i>Tephrosia purpurea</i>
21	<i>Coccinia grandis</i> (L.) Voigt	Cucurbitaceae	Climber	Along human habitations and streams	Occasional	<i>Cryptostegia grandis</i>
22	<i>Combretum ovalifolium</i> Roxb. ex	Combretaceae	Liana	Hill slopes	Occasional	<i>Pterolobium hexapetalum</i>

	G.Don					
23	<i>Commelina undulata</i> R.Br.	Commelinaceae	Herb	In Fields	Common	<i>Cholris barbata</i>
24	<i>Crinum latifolium</i> L.	Amaryllidaceae	Herb	Among rocks of mounds and hills	Rare	<i>Senna monatanana</i>
25	<i>Crotalaria hebecarpa</i> (DC.) Rudd	Fabaceae	Herb	Forest outskirts	Occasional	<i>Andrographis serpilifolia</i>
26	<i>Crotalaria paniculata</i> Willd.	Fabaceae	Herb	Forest peripheries	Occasional	<i>Tephrosia purpurea</i>
27	<i>Cryptostegia grandiflora</i> Roxb. ex R.Br.	Apocynaceae	Straggler	Along streams and embankment of ponds	Occasional	<i>Lantana camera</i>
28	<i>Cyanotis axillaris</i> (L.) D.Don ex Sweet	Commeliaceae	Herb	In fields	Occasional	<i>Phyllanthus maderaspatanus</i>
29	<i>Cyanthillium albicans</i> (DC.) H.Rob.	Asteraceae	Herb	On hills and slopes	Occasional	<i>Sida cordata</i>
30	<i>Cycas sphaerica</i> Roxb.	Cycadaceae	Palm	On high elevation hills	Rare	<i>Cymbopogon caesius</i>
31	<i>Dalbergia lanceolaria</i> subsp. <i>paniculata</i> (Roxb.) Thoth	Fabaceae	Tree	Forest peripheries and on hills	Occasional	<i>Azadirachta indica</i>
32	<i>Datura innoxia</i> Mill.	Solanaceae	Herb	Wastelands	Common	<i>Tephrosia purpurea</i>
33	<i>Dendrophthoe falcata</i> (L.f.) Ettingsh.	Loranthaceae	Epiphytic shrub	Along streams	Occasional	<i>Catunaregum spinosa</i> and <i>Pongamia pinnata</i>
34	<i>Dichrostachys cinerea</i> (L.) Wight & Arn.	Fabaceae	Tree	Forest outskirts	Occasional	<i>Lantana camera</i>
35	<i>Dodonaea viscosa</i> Jacq.	Sapindaceae	Shrub	Forest peripheries and on rocky hills	Common	<i>Senna monatanana</i>
36	<i>Eclipta prostrata</i> (L.) L.	Asteraceae	Herb	Along water bodies	Common	<i>Phyllanthus maderaspatanus</i>
37	<i>Epaltes divaricata</i> Cass.	Asteraceae	Herb	Along water bodies	Rare	<i>Polycarpon prostratum</i>
38	<i>Eriocaulon richardianum</i> (Fyson) R.Ansari & N.P.Balakr.	Eriocaulaceae	Herb	Along perennial water bodies	Occasional	<i>Utricularia polygonoides</i>
39	<i>Euphorbia cristata</i> B.Heyne ex Roth	Euphorbiaceae	Herb	On hills	Occasional	<i>Cymbopogon caesius</i>
40	<i>Euphorbia heterophylla</i> L.	Euphorbiaceae	Herb	Fields	Occasional	<i>Phyllanthus maderaspatanus</i>
41	<i>Euphorbia hirta</i> L.	Euphorbiaceae	Herb	In fields	Common	<i>Phyllanthus maderaspatanus</i>
42	<i>Exacum pedunculatum</i> L.	Gentianaceae	Herb	Along canals of forests or fields	Occasional	<i>Physalis minima</i>
43	<i>Flacourtia indica</i> (Burm.f.) Merr.	Salicaceae	Shrub	Forest peripheries and along hill slopes	Occasional	<i>Tarenna asiatica</i> , <i>Senna auriculata</i>
44	<i>Gloriosa superba</i> L.	Colchicaceae	Climber	Along canals of forests	Rare	<i>Dodonaea viscosa</i>
45	<i>Glossocardia bosvallia</i> DC.	Asteraceae	Herb	Wastelands and forests	Common	<i>Oldelandia umbellata</i>
46	<i>Holoptelea integrifolia</i> (Roxb.) Planch.	Urticaceae	Tree	Forest peripheries and on hills	Occasional	<i>Pterospermum xylocarpum</i>
47	<i>Hugonia serrata</i> Lam.	Linaceae	Liana	Forest peripheries and along hill slopes	Occasional	<i>Combretum albidum</i>
48	<i>Indigofera coerulea</i> Roxb.	Fabaceae	Shrub	Under shade of hill slopes	Occasional	<i>Tephrosia acuminata</i>
49	<i>Indigofera trita</i> L.f.	Fabaceae	Herb	An rocky hill slopes	Rare	<i>Cymbopogon caesius</i>

50	<i>Ipomoea obscura</i> (L.) Ker Gawl.	Convolvulaceae	Climber	Fields and Forest outskirts	Occasional	<i>Cymbopogon caesius</i>
51	<i>Jatropha gossypifolia</i> L.	Euphorbiaceae	Shrub	Canal embakments	Occasional	<i>Dodonaea viscosa</i>
52	<i>Lantana camara</i> L.	Verbenaceae	Shrub	Forest outskirts	Common	<i>Dodonaea viscosa</i>
53	<i>Lophopogon tridentatus</i> (Roxb.) Hack.	Poaceae	Herb	Open lands of Forest peripheries	Rare	<i>Melanocenchris monoica</i>
54	<i>Martynia annua</i> L.	Pedaliaceae	Herb	Along fields and wastelands	Occasional	<i>Tephrosia purpurea</i>
55	<i>Melanocenchris monoica</i> (Rottler) C.E.C.Fisch.	Poaceae	Herb	Open lands of Forest peripheries	Common	<i>Lophopogon tridentatus</i>
56	<i>Mitracarpus hirtus</i> (L.) DC.	Rubiaceae	Herb	Forest peripheries	Occasional	<i>Perotis indica</i> and <i>Spermaceoce articularis</i>
57	<i>Mundulea sericea</i> (Willd.) A.Chev.	Fabaceae	Shrub	Among and along rocks	Occasional	<i>Senna auriculata</i> and <i>Catunaregum spinosa</i>
58	<i>Oldenlandia umbellata</i> L.	Rubiaceae	Herb	Open lands of Forest peripheries	Common	<i>Chrysopogon fulvus</i>
59	<i>Opuntia dillenii</i> (Ker Gawl.) Haw.	Cactaceae	Shrub	Fields and forest outskirts streams	Occasional	<i>Flacourtia indica</i>
60	<i>Ouret lanata</i> (L.) Kuntze	Amaranthaceae	Herb	Wastelands and fields	Occasional	<i>Phyllanthus maderaspatanus</i>
61	<i>Perotis indica</i> (L.) Kuntze	Poaceae	Herb	Along fields and wastelands	Common	<i>Tragus monogolorum</i>
62	<i>Phoenix sylvestris</i> (L.) Roxb.	Arecaceae	Palm	Along streams	Occasional	<i>Termianalia arjuna</i> , <i>Syzygium cumini</i>
63	<i>Phyllanthus maderaspatensis</i> L.	Pyllanthaceae	Herb	Fields	Common	<i>TrientHEMA portulacastrum</i>
64	<i>Phyllanthus virgatus</i> G.Forst.	Phyllanthaceae	Herb	An hill slopes	Common	<i>Utricularia scandens</i>
65	<i>Physalis angulata</i> L.	Solanaceae	Herb	Fields and water bodies	Occasional	<i>Eclipta prostrate</i>
66	<i>Polycarpon prostratum</i> (Forssk.) Asch. & Schweinf.	Caryophyllaceae	Herb	Along perennial water bodies	Rare	<i>Utricularia polygonoides</i>
67	<i>Pseudarthria viscida</i> (L.) Wight & Arn.	Malvaceae	Herb	Under shade of hill slopes	Occasional	<i>Cymbopogon caesius</i>
68	<i>Psydrax dicoccos</i> Gaertn.	Rubiaceae	Tree	Along hills, peripheries, streams and slopes	Occasional	<i>Flacourtia indica</i>
69	<i>Pterolobium hexapetalum</i> (Roth) Santapau & Wagh	Fabaceae	Climbing shrub	On hills	Occasional	<i>Secamone emetic</i>
70	<i>Pterospermum xylocarpum</i> (Gaertn.) Oken	Malvaceae	Tree	An hill slopes	Occasional	<i>Cassia fistula</i>
71	<i>Ruellia prostrata</i> Poir.	Acanthaceae	Herb	Along fields and wastelands	Occasional	<i>Phyllanthus maderaspatanus</i>
72	<i>Sapindus emarginatus</i> Vahl	Sapindaceae	Tree	On hills	Rare	<i>Dalbergia paniculata</i>
73	<i>Scurrula cordifolia</i> (Wall.) G.Don	Loranthaceae	Epiphytic shrub	Hill slopes	Rare	<i>Dalbergia paniculata</i>
74	<i>Searsia mysorensis</i> (G.Don) Moffett	Anacardiaceae	Shrub	On mounds	Rare	<i>Cymbopogon caesius</i>
75	<i>Secamone emetica</i> (Retz.) R.Br. ex Sm.	Apocynaceae	Liana	Forest peripheries and on hills	Occasional	<i>Pterolobium hexapetalum</i>

76	<i>Senna auriculata</i> (L.) Roxb.	Fabaceae	Shrub	Bunds of fields, Wastelands, forest peripheries and on hills	Common	<i>Mundulea sericea</i> , <i>Dodonaea viscosa</i> and <i>Catunaregum</i> <i>spinosa</i>
77	<i>Senna montana</i> (B.Heyne ex Roth) V.Singh	Fabaceae	Shrub	Forest peripheries and along hill slopes	Common	<i>Catunaregum</i> <i>spinosa</i>
78	<i>Senna surattensis</i> (Burm.f.) H.S.Irwin & Barneby	Fabaceae	Shrub	Under shade of hill slopes	Rare	<i>Flacourtia indica</i>
79	<i>Senna uniflora</i> (Mill.) H.S.Irwin & Barneby	Fabaceae	Herb	Along streams and embakment of ponds	Occasional	<i>Tragia involucrata</i>
80	<i>Shorea roxburghii</i> G.Don	Dipterocarpaceae	Tree	On high elevation hills	Rare	<i>Pterospermum</i> <i>xylocarpum</i>
81	<i>Sida cordata</i> (Burm.f.) Borss.Waalk.	Malvaceae	Herb	Hill slopes	Occasional	<i>Cyanthelium albicans</i>
82	<i>Solanum pubescens</i> Willd.	Solanaceae	Shrub	Forest outskirts	Occasional	<i>Senna auriculata</i>
83	<i>Solanum virginianum</i> L.	Solanaceae	Herb	Wastelands and forest outskirts	Occasional	<i>Tephrosia purpurea</i>
84	<i>Sphaeranthus indicus</i> L.	Asteraceae	Herb	Fields	Common	<i>Commelina undulata</i>
85	<i>Striga asiatica</i> (L.) Kuntze	Orobanchaceae	Herb	Among rocks	Occasional	<i>Cymbopogon caesius</i>
86	<i>Synostemon</i> <i>bacciformis</i> (L.) G.L.Webster	Phyllanthaceae	Herb	Along forest water bodies	Rare	<i>Polycarpon</i> <i>prostratum</i>
87	<i>Tarenna asiatica</i> (L.) Kuntze ex K.Schum.	Rubiaceae	Shrub	Among, along rocks of hill slopes and peripheries	Common	<i>Senna auriculata</i> and <i>Flacourtia indica</i>
88	<i>Tephrosia lanceolata</i> Graham ex Gamble	Fabaceae	Shrub	Hill slopes	Occasional	<i>Cymbopogon caesius</i>
89	<i>Tephrosia purpurea</i> (L.) Pers.	Fabaceae	Herb	Along fields, wastelands and forests	Common	<i>Crotalaria</i> <i>paniculata</i>
90	<i>Terminalia</i> <i>anogeissiana</i> Gere & Boatwr.	Combretaceae	Tree	On high elevation hills	Rare	<i>Canthium dicoccum</i>
91	<i>Tragia involucrata</i> L.	Euphorbiaceae	Climber	Along streams and embakment of ponds	Occasional	<i>Senna uniflora</i>
92	<i>Trianthema</i> <i>portulacastrum</i> L.	Aizoaceae	Herb	Fields	Common	<i>Eclipta prostrata</i>
93	<i>Typha angustifolia</i> L.	Typhaceae	Herb	Along water bodies	Common	<i>Exacum</i> <i>pedunculatum</i>
94	<i>Utricularia</i> <i>polygaloides</i> Edgew.	Lentibulariaceae	Herb	Along perennial water bodies	Rare	<i>Bacopa monnieri</i>
95	<i>Utricularia scandens</i> Benj.	Lentibulariaceae	Herb	Along perennial water bodies	Rare	<i>Eriocaulons</i>
96	<i>Vachellia nilotica</i> (L.) P.J.H.Hurter & Mabb.	Fabaceae	Tree	Along streams and fields	Occasional	<i>Azadirachta indica</i>
97	<i>Ventilago denticulata</i> Willd.	Rhamnaceae	Liana	Hill slopes	Rare	<i>Dalbergia paniculata</i>
98	<i>Vincetoxicum indicum</i> (Burm.f.) Mabb.	Apocynaceae	Climber	Along foot hills and bunds of fields	Occasional	<i>Carissa spinarum</i>
99	<i>Vitex altissima</i> L.f.	Lamiaceae	Tree	On hills	Rare	<i>Pterospermum</i> <i>xylocarpum</i>
100	<i>Vitex negundo</i> L.	Lamiaceae	Shrub	Along canals	Occasional	<i>Azadirachta indica</i>

PLATE - 1



Acalypha scabrosa



Ageratum conyzoides



Alangium salvifolium



Andrographis serpyllifolia



Aristida setacea



Azadirachta indica



Boerhavia diffusa

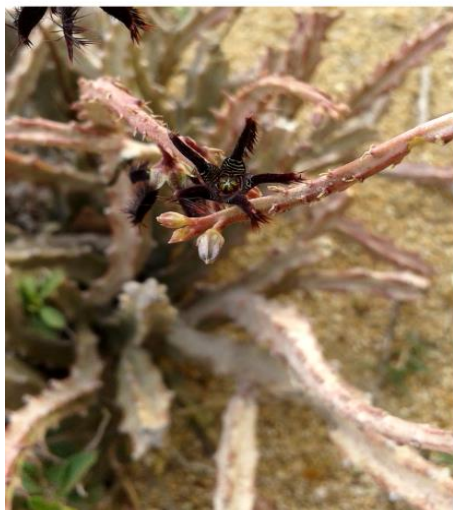


Borassus flabellifer



Calotropis gigantea

PLATE - 2



Caralluma adscendens



Carissa spinarum



Cascabela thevetia



Cassia fistula



Catunaregum spinosa



Chloris barbata



Chrysopogon fulvus



Cissus quadrangularis



Cleome gynandra

PLATE - 3



Cleome monophylla



Cleome viscosa



Coccinia grandis



Combretum ovalifolium



Commelina undulata



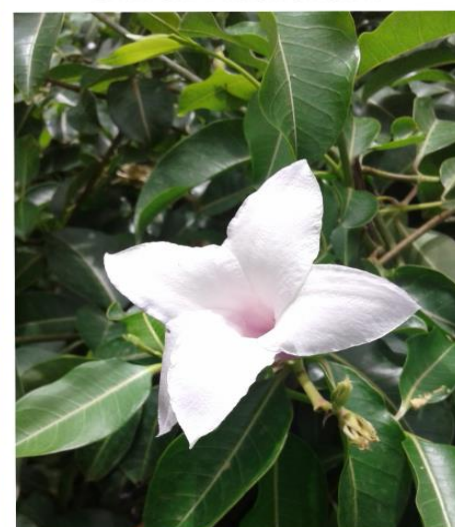
Crinum latifolium



Crotalaria hebecarpa



Crotalaria paniculata



Cryptostegia grandiflora

PLATE - 4



Cyanotis axillaris



Cyanthilium albicans



Cycas sphaerica



Dalbergia lanceolaria



Datura innoxia



Dendrothoe falcata



Dichrostachys cinerea



Dodonaea viscosa



Eclipta prostrata

PLATE - 5



Epaltes divaricata



Eriocaulon richardianum



Euphorbia cristata



Euphorbia heterophylla



Euphorbia hirta



Exacum pedunculatum



Flacourtia indica



Gloriosa superba



Glossocordia bosvallia

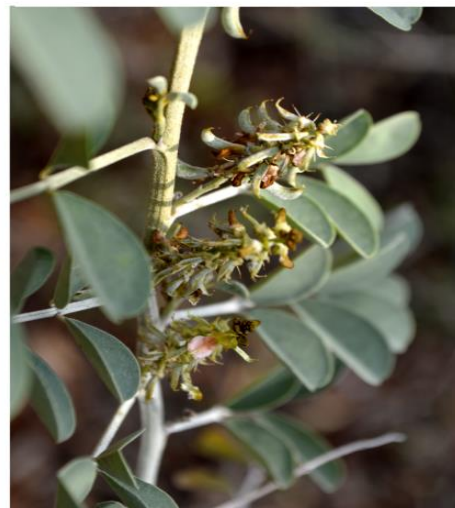
PLATE - 6



Holoptelea integrifolia



Hugonia serrata



Indigofera coerulea



Indigofera trita



Ipomoea obscura



Jatropha gossypifolia



Lophopogon tridentatus



Lantana camara



Martynia annua

PLATE - 7



Melanocenchris monoica



Mirtacarpus hirtus



Mundulea sericea



Oldenlandia umbellata



Opuntia dilleneii



Ouret lanata



Perotis indica



Phoenix sylvestris



Phyllanthus maderaspatensis

PLATE - 8



Phyllanthus virgatus



Physalis angulata



Polycarpon prostratum



Pseudarthria viscida



Psydrax dicoccos



Pterolobium hexpetalum



Pterospermum xylocarpum



Ruellia prostrata



Sapindus emarginatus

PLATE - 9



Scurrula cordifolia



Searsia mysorensis



Seccamone emetica



Senna auriculata



Senna montana



Senna surattensis



Senna uniflora



Shorea roxburghii



Sida cordata

PLATE - 10



Solanum pubescens



Solanum virginianum



Sphaeranthus indicus



Striga asiatica



Synostemon bacciformis



Tarenna asiatica



Tephrosia lanceolata



Tephrosia purpurea



Terminalia anogeissiana

PLATE - 11



Tragia involucrata



Trianthema portulacastrum



Typha angustifolia



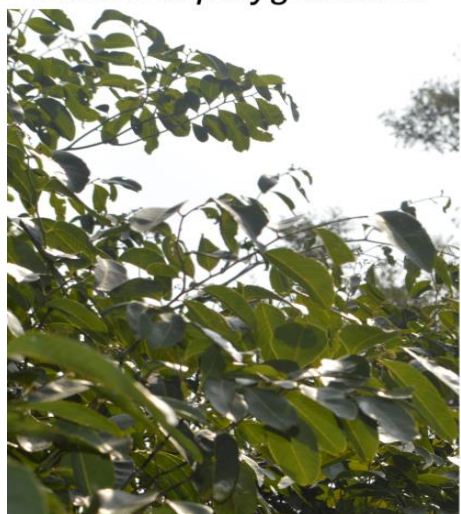
Utricularia polygonoides



Utricularia scandens



Vachellia nilotica



Ventilago denticulata



Vincetoxicum indicum



Vitex altissima

Results and Discussion

Deeply explored and recorded vascular plants surroundings of Kudumulavari palli, through the covering different habitats, I.e. Forest outskirts, Hill slopes, In Fields, Along with perennial water bodies, On hills, Along canals, Along with fields and wastelands, Along streams and embankment of ponds, Forest peripheries, Along hill slopes, On high elevation hills, Open lands of Forest peripheries, Under the shade of hill slopes, Along with human habitations and fields, Along streams, Fields and forest outskirts streams, Along bunds of fields and other sun exposing areas of hills, Along canals of forests, Along with forest water bodies, Among and along rocks, Among rocks of mounds, An rocky hill slopes, Canal embankments; recorded 100 plants which belong 44 families and 86 genera, most dominant families are Fabaceae with 17 species, Apocynaceae 7 species, Asteraceae 6 species, Euphorbiaceae 6 species and Poaceae with 6 species; dominant genera followed by Senna with 4 species, Cleome 3 species and Euphorbia with 3 species; Habit wise followed by Herbs 49, Shrubs 21, Trees 14, Climbers 6, Lianas 4, Epiphytic shrubs 2, Palms 2, Climbing shrub 1 and Straggler 1; Abundance wise followed by Occasional distributed 50 species, Common 28 species and 22 species have rare distribution. 100 species were recorded with detailed information.

Conflict of Interest

The author hereby declares no conflict of interest.

Consent for publication

The author declares that the work has consent for publication.

Funding support

The author declares that they have no funding support for this study.

References

- Gamble, J. S., & Fischer, C. E. C. (1915-1935). Flora of the Presidency of Madras, London. Rep.ed. 1957. Botanical survey of India, Calcutta.
- Pullaiah, T. & Karuppusamy, S. (2018). Flora of Andhra Pradesh. Vol. 3. Scientific Publishers, Delhi.
- Pullaiah, T. & Murthy, K.S.R.(2018). Flora of Andhra Pradesh. Vol. 2. Scientific Publishers, Delhi.
- Pullaiah, T. & Sandhya Rani, S. (1999). Trees of Andhra Pradesh, India Regencypublications, New Delhi.
- Pullaiah, T., Ali Moulali, D. & Sandhya Rani, S. (2018). Flora of Andhra Pradesh. Vol. 4. Scientific Publishers, Delhi.
- Pullaiah, T., Chennaiah, E. & Sandhya Rani, S. (2018). Flora of Andhra Pradesh. Vol. 1. Scientific Publishers, Delhi.
- Siddique, Z., Nisa, S., Shah, G. M., Khan, A., Naz, A., Khan, S., & Mohiuddin, M. (2014). Exploration of floristic diversity of Khanpur valley, District Haripur, Khyber Pakhtunkhwa, Pakistan.

This work is licensed under a [Creative Commons Attribution 4.0 International License](https://creativecommons.org/licenses/by/4.0/).



How to cite this article:

Anjaneyulu, P.(2021). A preliminary exploration of kudumula varipalli vascular flora, peddamandyam mandal, chittoor district, Andhra Pradesh, India. *Science Archives*, Vol. 2 (1), 33-49. <http://dx.doi.org/10.47587/SA.2021.2107>