

A Better Solution for Your Business

BIXOLON GUIDE 2006 EDITION

BIXOLON CO., LTD. (Headquarters)

Factoryworld 709, 332-2, Wonchon-dong,
yeongtong-gu, Suwon, Kyonggi-do,
Korea, 443-822
TEL : +82-31-218-5522
FAX : +82-31-218-5589
E-mail : sales@samsungminiprinters.com

BIXOLON America

10225 Barnes Canyon Rd,
A201 San Diego, CA 92121
TEL : +1-858-764-4580
FAX : +1-858-550-0187

BIXOLON Europe

Lindenstrasse 169 40233 Düseldorf
TEL : +49(0) 211-68-78-54-10
FAX : +49(0) 211-68-78-54-20

BIXOLON China

Room 2901, Chuangzhan Center,
Office Tower, 6007 Shen'nan Avenue,
Fu Tian District, Shenzhen City, PRC.
TEL : +86-755-83475315
FAX : +86-755-83475311

ALL INFORMATION INDICATED IN THIS CATALOG
IS AS OF APRIL 2006
The specifications and designs contained herein
may be subject to change without notice.

www.samsungminiprinters.com

Contents	04 New Release	11 Thermal Printer STP - 131	18 Label Printer SRP - 770¥-
	05 Advanced Technology	12 Thermal Printer STP - 103/103DK	19 Customer Display Printer BCD - 1000
	06 BIXOLON Thermal Printers	13 Thermal Printer BPP - 100	20 Options
	07 Thermal Printer SRP - 350 plus	14 BIXOLON Impact Printer	21 Printer Set
	08 Thermal Printer SRP - 350 plus F	15 Impact Printer SRP - 275	24 Mechanisms
	09 Thermal Printer SRP - 370	16 Impact Printer SRP - 270	
	10 Thermal Printer SRP - 350	17 Inkjet Printer SRP - 500	

BIXOLON Philosophy

We believe that printing technology is an essential tool which contributes to the business world as well as to the general public; thus we are devoting ourselves to developing products and services utilizing the best people and applying the most advanced technology.

As a company that originated from Samsung, we are proud to honor and live Samsung's business culture and traditions within BIXOLON

Credo of BIXOLON employees

We sell satisfaction - we smile with our customers.

We are proud of, and confident in, our brand : BIXOLON.

We believe our products and services must be the best.

We are technical experts to rely on and a lifetime business partner.

We value teamwork; achieving our goals by respecting each other.



Devotion to Clients and Printing Technology

Printing technology is the science of producing printed materials - the result of processed information - that can be easily understood and shared. Accurate and well presented printing materials improve decision making and work processes in terms of speed and quality.

BIXOLON is focusing on POS, Auto ID, and Mobile printers which are essential tools to verify and apply data. These products improve information system operations and also increase the user's processing capacity.

BIXOLON products are internationally approved and trusted by customers all around the globe. We are proud of our achievements and will not stop improving our products and services, thus increasing customer satisfaction and raising the technical standards of the printing industry.

BIXOLON originated from Samsung

In 1993, the printing business department at Samsung Electro-Mechanics designed and developed its first ECR printing mechanism. Since then, this business successfully has been growing, adding new products and global partnerships. In 2003, Samsung Electro-Mechanics authorized and endorsed the creation of an independent corporate entity, BIXOLON, to ensure the continued success and growth of this specialized field by adding focus and expertise for the printing products.

BIXOLON is proud of its heritage and is maintaining all the positive aspects of its Samsung roots. All BIXOLON's founding members are former Samsung staff, whom remain fully committed to follow, implement and live Samsung traditions and corporate culture. As such, all the BIXOLON business functions and processes have derived from and are based on Samsung's corporate mission-utilizing its people and technologies to provide products and services that benefit mankind.

NEW RELEASE

SRP-350plus(A/C/F)

Two-Color Thermal Printer



SRP-350plus A Type

SRP-350plus C Type



SRP-350plus F

The BIXOLON SRP-350plus series (SRP-350plusA/C/F types) is the new BIXOLON's suggestion for you to boost more performance than the SRP-350.

Designed specifically for high-volume retail and hospitality environments, the SRP-350plus delivers more speed and more reliability than ever before. It offers 200mm/sec printing speed of text and graphics, two-color capability and new ease-of-use features.

f SRP-350plus A type : Tear-bar type

f SRP-350plus C type : Auto Cutter type

f SRP-350plus F type : Fiscal printer with auto cutter

BPP-100

Panel Thermal Printer

With its speed, quality and cost-effective efficiency, the BIXOLON Samsung BPP-100 is clearly an ideal product. This user-friendly design incorporates a very compact size, drop and print, and can print at a speed of 65mm per second.

Just some of applications;
Medical Analyzer, Industrial Instrument, Recorder, Geological Analyzer, Chemical Analyzer, Metallic Analyzer, Receipt, Coupon, Ticket, Bar-Code etc.



BCD-1000

BIXOLON Customer Display



BIXOLON's BCD-1000 is a slim customer display that provides your customers clear, easy-to-read information at the fastest data-transfer rate available. The easy-to-use VFD display makes at attractive communication with customers by its fascinating design and rich colors.

The BCD-1000 is a 2 x 20 line 5mm character height display that comes with much functionality that simply is not found in other vendors ; customer displays. User-definable characters, and a built-in real time clock are all standard features of the unit's firmware. The BCD-1000 comes with variety of interfaces, can emulate many popular command sets, and has better visibility due to an optically matched lens and wider character pitch. Best of all, this premium pole display is also one of the most affordable on the market.

ADVANCED TECHNOLOGY

Versatile Interface



Ethernet

Ethernet infrastructure is more than just a way for computers to communicate with each other. Ethernet can also be used to communicate with devices such as printers, using Ethernet print servers.

Available with Ethernet : SRP-350plus, SRP-350, SRP-370, SRP-270, SRP-275



Bluetooth

Remove cables between POS host and remote printers effectively and affordably

Available with Bluetooth : SRP-350plus, SRP-350, SRP-370, SRP-270, SRP-275



USB + Serial

One combo board provides faster speed and ease of use

Available with USB+Serial : SRP-350plus, SRP-350, SRP-370, SRP-270



Powered USB

Our powered USB offers a secure peripheral connection that delivers both power and data over a single cable connection

Available with Powered USB : SRP-350plus, SRP-350, SRP-370, SRP-270, SRP-275

* Serial, Parallel and USB are available as basic interfaces

User-Friendly Options



Wall-Mount Bracket

Available with SRP-350plus, SRP-350, SRP-370, SRP-275



Splash Proof Cover

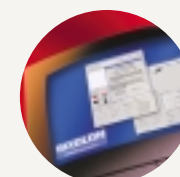
Available with SRP-350plus, SRP-350, SRP-370, SRP-275



External Buzzer

Available with SRP-350plus, SRP-350, SRP-270, SRP-500

Software Support



f Windows Driver (Windows 95/98/ME/2000/NT/XP/2003 server)

f OPOS

f Logo Download Utility

f Memory Switch Utility

BIXOLON Thermal Printers

As more customers stand in line, more your choice on POS printers becomes important. BIXOLON Samsung mini printers help you design your own POS system and fast wide selection.

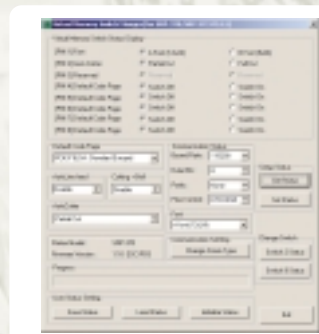


In recent years the speed, print quality and graphics capabilities of thermal printers have increased their popularity and decreased their cost of ownership. BIXOLON is pleased to present our full line of direct thermal printers with a variety of features and performance levels to fit any application.

User-Friendly BIXOLON Software Utility and Driver

Customer oriented utilities enable the users to directly access logo download, language selection and setting change more easily.

- Virtual Memory Switch Manager (VMSM)
 - Easy selection of printer settings and Default language change
- Firmware Download Utility
 - Simple download process and No hardware change required
- BIXOLON Express Windows Driver
 - Marvelous printing speed of TrueType fonts and Graphics



Virtual Memory Switch Manager Utility



Firmware Download Utility



BIXOLON Express Windows Driver

new SRP-350plus

Two-color Thermal Receipt Printer



The SRP-350plus series (SRP-350plusA/C) is the new BIXOLON's suggestion for you to boost more performances than the SRP-350.

Designed specifically for high-volume retail and hospitality environments, the SRP-350plus delivers more speed and more reliability than ever before. It offers 200mm/sec printing speed of text and graphics, two-color capability and new ease-of-use features.



SRP-350plus A type
(Tear - bar Type)

SRP-350plus C type
(Auto Cutter Type)

Easy Paper Loading



Beautiful Two-color printing



Attractive Features



- A BIXOLON product : The performance of a strong partner, wide experience and support, compatibility to all the other peripherals
- High-end thermal print technology : Quiet printing for a convenient atmosphere in the cash zone. Printer can also be used in high-class shops; avoids disturbing the staff and the customers at POS environment
- Printing speed of up to 200mm/sec. (30% faster than the SRP-350) : Saves time at POS during the cash procedure; avoids customer queues in the cash zone; fast print of sharp bar-codes and logos
- Compact foot printer, 145(W) x 195(L) x 146(H) : Saves space on the counter
- High reliability : MCBF 70million lines, Auto cutter 1.5million cuts
- Easy code page installation by user-friendly utility (VMSM).
- Improved cover design for increased spill resistance
- Wide range of interface cards: Serial, Parallel, USB(USB 2.0 is available), Ethernet (10 / 100 Base T), Bluetooth



SPECIFICATION FOR THE SRP-350PLUSA / C THERMAL RECEIPT PRINTER		
PRINT	PRINT METHOD	Direct Thermal Printing
	WIDTH	3-inch
	PRINT SPEED	200mm / sec
	RESOLUTION	180 DPI(7dot / mm)
	PAPER SUPPLY METHOD	Easy Paper Loading
	CHARACTER SIZES	Font A : 12 X 24 Font B : 9 X 24
	CHARACTER PER LINE	Font A : 42 Font B : 56
	EMULATION	ESC / POS
	SENSORS	Paper near end sensor, Paper end sensor
PAPER ROLL	WIDTH	79.5mm ± 0.5mm
	DIAMETER	Max. ∅ 83.0mm
BARCODES		1D : EAN - 13, EAN - 8, Code 39, Code 93, Code 128, ITF, Coda bar, UPC - A, UPC - E
		2D : PDF417, QR Code
RELIABILITY	MCBF	70,000,000 Lines
	AUTO CUTTER	1.5 million cuts
	TPH	150 km
CONNECTIVITY	INTERFACE	RC - 232C, IEEE - 1284, USB, USB + Serial, Ethernet(10 / 100 Base - T), Bluetooth
POWER	SUPPLY	AC 120V ~ 230V ^o ± 10% (Include), DC 24V, 2.3A
RECEIVE BUFFER SIZE		64KBytes
OPTIONS	CUTTER TYPE	SRP - 350plusC Type : Auto Cutter (Guillotine) SRP - 350plusA Type : Manual Cutter (Tear - Bar) Wall mount blanket, Splash proof cover
	LANGUAGE	Buyer Language Support
DIMENSION		145(W) X 195 (L), 146 (H)mm

new

SRP-350plus F

Two-color Thermal Fiscal Printer



Ivory Dark Gray

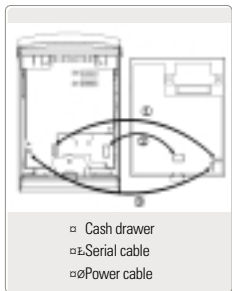
BIXOLON has newly released a thermal fiscal printer SRP-350plus F. With its 1 station, electronic journal thermal fiscal printer, BIXOLON provides high-speed printing of receipts and journals. The specialist for fiscal POS solutions reaches speeds of 200mm per second when printing both receipts and journals.

- Receipt and journal printing in a slim housing: Saves space; flexible and versatile; can be used in nearly all retail segments
- Printing speed of up to 200mm/s with two-color printing: Saves time at POS during the cash procedure ; avoids customer queues in the cash zone; fast print of sharp bar-codes and logos.
- Prepared space for fiscal module : The smooth and slim housing is not influenced by fiscal board.
- Compact foot print, 145x197x177 : Saves space on the counter that can be used for POS revenue.
- High reliability: MCBF 70million lines, Auto cutter 1.5million cuts
- High-end thermal print technology : Quiet printing for a convenient atmosphere in the cash zone. Printer can also be used in high-class shops; avoids disturbing the staff and the customers at POS
- Simply chosen by memory switch program or commend
- Integrated Sealing point

Space for built-in fiscal board



Connecting the cable



- Cash drawer
- Serial cable
- Power cable

Easy paper loading



SPECIFICATION FOR THE SRP-350PLUSF FISCAL THERMAL PRINTER		
PRINT	PRINT METHOD	Direct Thermal Printing
	WIDTH	3-inch
	PRINT SPEED	200mm / sec
	RESOLUTION	180DPI(7dot / mm)
	PAPER SUPPLY METHOD	Easy Paper Loading
	CHARACTER SIZES	Font A : 12 X 24 Font B : 9 X 24
	CHARACTER PER LINE	Font A : 42 Font B : 56
	EMULATION	ESC/POS
	SENSORS	Paper near end sensor, Paper end sensor
	PAPER TYPE	Thermal Paper
PAPER ROLL	WIDTH	79.5mm ± 0.5mm
	DIAMETER	Max. ϕ 83.0mm
BARCODES		1D : EAN - 13, EAN - 8, Code 39, Code 93, Code 128, ITF, Coda bar, UPC - A, UPC - E
		2D : PDF417, QR Code
RELIABILITY	MCBF	70,000,000 Lines
	AUTO CUTTER	1.5 million cuts
	TPH	150 km
CONNECTIVITY	INTERFACE	RC - 232C, IEEE - 1284, USB, USB + Serial, Ethernet (10 / 100 Base-T), Bluetooth
	SUPPLY	AC 120V ~ 230V ; 10% (Include), DC 24V, 2.3A
RECEIVE BUFFER SIZE		64KBytes
OPTIONS	AUTO CUTTER TYPE	Guillotine
	LANGUAGE	Buyer Language support
DIMENSION		145(W) X 195(L), 177(H)mm

SRP-370/372

Two-Color Thermal Printer



Ivory Dark Gray

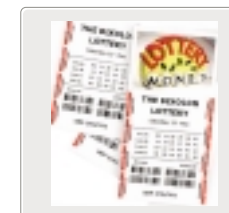
High speed & 2 color POS printer features for all Retail and Hospitality solutions!!!

BIXOLON Samsung Mini Printers keep at the forefront of technology and commitment to reliability with new model. The SRP-370 two color fast print speed thermal printer is ideal for retail and hospitality applications and allows you to print receipt with company logos and barcodes plus add coupons.

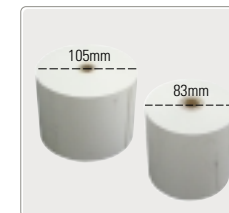
- The fastest speed in its class : Printing at maximum speed of 200mm per second
- Beautiful color printing : Two-color receipt increase the customer ;satisfaction with your business
- Multiple paper widths (80mm=standard receipt, 58mm=2 inch label, 82.5mm= special as Lottery)
- No more embarrassing paper jams in front of your customers with Drop in and print ; -
- Print lasts longer with a bigger paper diameter up to 105mm
- A quality suite of software for easy system integration : Windows, OPOS and Java POS are full lined up
- High resolution : Customer can have freedom to choose 180dpi(SRP-370) or 203 dpi(SRP-372) at any necessities
- Wide range of interface cards: Serial, Parallel, USB(USB 2.0 is available), 10/100 Base T, Bluetooth



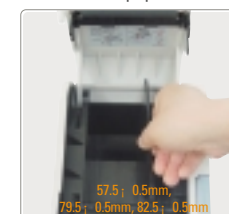
Lottery & Ticket



Large roll paper



Selective paper width



SPECIFICATION FOR THE SRP-370 THERMAL PRINTER			
PRINT	PRINT METHOD	Direct Thermal	
	PRINT SPEED	200mm / sec (61.7 LPS)	
	PAPER SUPPLY METHOD	Easy Paper Loading	
	RESOLUTION	SRP-370 : 180 dpi (7dot / mm) SRP-372 : 203dpi (8dot / mm)	
	CHARACTER SET		Alphanumeric Character : 96
			Extended Graphic : 128 x 17 page (1space page)
			International Character : 32
	CHARACTER SIZE	Font A : 12 x 24 Font B : 9 x 24	
	CHARACTER PER LINE		SPR 370 Font A : 42 Font + B : 56
			SPR 372 Font A : 48 Font + B : 64
PAPER TYPE		Mono & 2 color thermal paper (Blue & Black, Red & Black)	
PAPER ROLL	WIDTH	57.5mm ± 0.5mm, 79.5mm ± 0.5 mm, 82.5 mm ± 0.5 mm	
	DIAMETER	Max ϕ 105.0mm	
RELIABILITY	MCBF	70,000,000 Lines	
	AUTO CUTTER	1.5 million cuts	
	TPH	150Km	
BARCODES		1D: EAN - 13, EAN - 8, Code 39, Code 93, Code 128, ITF, Coda Bar, UPC-A, UPC-E / 2D(Default) : PDF417, QR Code	
EMULATION		ESC/POS, Citizen, Star	
FLASH MEMORY		16 Mbit	
DATA BUFFER		64 KByte	
DRIVER		Windows 95 / 98 / Me / 2000 / NT / XP / 2003 server, USB, OPOS	
SENSOR	2 OPTIONAL	Paper Near End Sensor, Paper End Sensor	
DRAWER PORT		2 ports	
CONNECTIVITY	INTERFACE	RS-232C, IEEE1284, USB, USB + Serial, Ethernet (10 / 100 Base - T), Bluetooth	
	LANGUAGE	Buyer language support	
	WALL MOUNT	RWM - 370	
OPTIONS	COLOR	Ivory, Dark gray	
	SUPPLY	AC120V ~ 230V ± 10% (Include), DC24V, 2.3A	
POWER		AC120V ~ 230V ± 10% (Include), DC24V, 2.3A	
DIMENSION		146(W) x 204(L) x 160(H) mm	
AUTO CUTTER	TYPE	Guillotine	

SRP-350

Thermal Printer



Ivory Dark Gray

Look no further for thermal printing on 80mm wide paper, the SRP-350 is all you need. Not only for the retail environment but also for medical, warehouse, manufacturing, mail order etc.. Benefiting from Windows and OPOS drivers this great printer is easy to integrate to any system.

Fast speed and reliability you can expect from a leading manufacturer.

Providing simplicity for the operator with "drop in and print" paper loading and ease of connectivity for the technician with interchangeable interfaces and industry standard drivers. The modern design and small footprint enhance any environment.

High-end thermal print technology : Quiet printing for a convenient atmosphere in the cash zone.

Printer can also be used in high-class shops; avoids disturbing the staff and the customers at POS environment

High printing speed : The SRP-350 prints at speeds of up to 150mm per second

Easy system integration : Drives are available for Windows 95/98/ME/NT4.0/XP/2003 server and OPOS

A simple drop-in loading system means that even inexperienced operators can load paper rolls with the minimum of efforts

A convenient software program : Logo/firmware download program helps you use logo efficiently and easily

Various interface cards : The SRP-350 features modular interface, RC-232C, RS-485, Parallel, USB,

Ethernet(10/100 Base T), Bluetooth interfaces simply by ordering a new module.

Easy paper jam clearance

Barcode printing



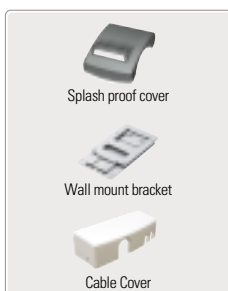
Easy Paper Loading



Small space for installation



Attractive Features



SPECIFICATION FOR THE SRP-350 THERMAL PRINTER			
PRINT	PRINT METHOD	Direct Thermal	
	PRINT SPEED	150mm / sec (47.2 LPS)	
	PAPER SUPPLY METHOD	Easy Paper Loading	
	RESOLUTION	180 dpi (7dot / mm)	
	CHARACTER SET	Alphanumeric Character : 96	
		Extended Graphic : 128 x 7 page (1space page)	
		International Character : 32	
	CHARACTER SIZE	Font A : 12 x 24 Font B : 9 x 17	
Font A : 42 Font B : 56			
PAPER TYPE	Thermal paper		
	WIDTH	79.5 mm ± 0.5mm	
PAPER ROLL	DIAMETER	Max. ∅ 83.0mm	
	RELIABILITY	MCBF	37,000,000 Lines
RELIABILITY	AUTO CUTTER	1.5 million cuts	
	TPH	100Km	
	BARCODES	1D : EAN - 13, EAN - 8, Code 39, Code 93, Code 128, ITF, Coda bar, UPC - A, UPC - E	
BARCODES	2D : PDF417, QR Code		
	EMULATION	ESC / POS	
FLASH MEMORY	16 Mbit		
DRIVER	Windows 95 / 98 / Me / 2000 / NT / XP / 2003 server, OPOS		
SENSOR	2 OPTIONAL	Paper Near End Sensor, Paper End Sensor	
DRAWER PORT	2 ports		
CONNECTIVITY	INTERFACE	RS - 232C, IEEE1284, USB, USB + Serial, RS - 485, Ethernet(10 / 100 Base - T), Bluetooth	
	LANGUAGE	Buyer language support	
	WALL MOUNT	RWM - 350	
OPTIONS	COLOR	Ivory, Dark gray	
	POWER	SUPPLY	AC120V ~ 230V ± 10% (Include), DC24V, 2.3A
DIMENSION	145(W) x 195(L) x 146(H) mm		
AUTO CUTTER	TYPE	Guillotine	

STP-131

Thermal Printer



Ivory Dark Gray

BIXOLON STP-131 offers cost-effective efficiency in thermal receipt printing.

This high speed, low cost direct thermal printer offers many of the features found in more expensive printers including near end , end of paper sensing, full graphics, and barcode printing support. The STP-131 accommodates Serial & Parallel interfaces in one board and has versatile download functions for logos, firmware and fonts.

A BIXOLON product : The performance of a strong partner, wide experience and support, compatibility to all the other peripherals

Fast printing speed : The STP-131 prints at speeds of up to 75mm per second

Drives are available for Windows 95 / 98 / ME / NT4.0 / XP / 2003 server and OPOS

Full and partial Cut

Compact foot printer

Barcode printing

High reliability : Auto cutter 1.5million cuts

Buyer language Support

- High-end thermal print technology : Quiet printing for a convenient atmosphere in the cash zone.
- Printer can also be used in high-class shops; avoids disturbing the staff and the customers at POS environment
- High printing speed : The STP-131 prints at speeds of up to 75mm per second
- Easy system integration : Drives are available for Windows 95/98/ME/NT4.0/XP/2003 server and OPOS
- A simple drop-in loading system means that even inexperienced operators can load paper rolls with the minimum of efforts
- A convenient software program : Logo/firmware download program helps you use logo efficiently and easily
- Various interface cards : The STP-131 features modular interface, RC-232C, RS-485, Parallel, USB, Ethernet(10/100 Base T), Bluetooth interfaces simply by ordering a new module.
- Easy paper jam clearance
- Barcode printing

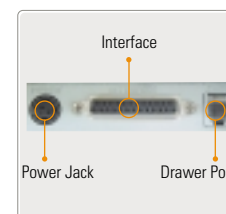
Neat Indicator



Auto paper loading



Serial + Parallel Convertible Board



SPECIFICATION FOR THE SRP-103 THERMAL PRINTER			
PRINT	PRINT METHOD	Direct Thermal	
	PRINT SPEED	75mm / sec (11.8 LPS)	
	RESOLUTION	180dpi (7dot / mm)	
	PAPER SUPPLY METHOD	Auto Paper Loding	
	CHARACTER SIZE	Font A : 12 x 24 Font B : 9 x 24	
		Font A : 42 Font B : 56	
	CHARACTER PER LINE	Alphanumeric Character : 95	
		Extended Graphic : 128 x 7 Page (1 space page)	
CHARACTER SETS	International Character : 32		
	EMULATION	ESC / POS	
DRIVERS	Windows 95 / 98 / ME / 2000 / NT4.0 / XP2003 server, OPOS		
	SENSOR	Paper near end sensor, Paper end sensor	
PAPER TYPE	Thermal Paper		
	WIDTH	79.5 ± 0.5mm	
PAPER ROLL	DIAMETER	Max. ∅ 83.0mm	
	BARCODES	EAN-13, EAN-8, Code 39, Code 93, Code 128, ITF, Coda bar, UPC - A	
RELIABILITY	MCBF	30,000,000 Lines	
	AUTO CUTTER	1.5 million Cuts	
	TPH	100km	
CONNECTIVITY	INTERFACE	RS-232C, IEEE-1284	
POWER	SUPPLY	AC120 ~ 230V ± 10% (include) DC 24V, 2.3A	
DIMENSION	150(W) x 205(L) x 132(H) mm		
OPTIONS	AUTO CUTTER	Guillotine	
	COLOR	Ivory, Dark Gray	
	LANGUAGE	Buyer Language Support	

STP-103/103DK

Thermal Printer

With its speed, quality and value, the BIXOLON Samsung STP-103 thermal receipt printer is clearly first in its class. This user-friendly design incorporates a small footprint, drop and print, and can print at a speed of 50mm per second. Its ability to produce large clear print on 58mm wide paper is found on no other compact printer.

- Speeds of up to 50mm per second with high resolution of 203 dpi
- Drivers are available for Windows 95 / 98 / ME / NT4.0 / XP / 2003 server and OPOS
- Available Cash drawer port with Buzzer
- Compact footprint (2 inch Thermal printer)
- Barcode and graphic printing
- Small size and light weight
- RS-232 and Parallel interface
- 15KB Buffer
- Baud rate up to 115,200 bps
- Support international character set
- Columns setting (24,32,42)



Ivory Dark Gray

new

BPP-100

Panel Thermal Printer

BIXOLON provides the panel printer BPP-100, 2" paper width bucket mechanism in 5 volt, with the smallest easy loading printing solution. With its speed, quality and cost-effective efficiency, the BIXOLON Samsung BPP-100 is clearly an ideal product. This user-friendly design incorporates a very compact size, drop and print, and can print at a speed of 65mm per second.

- Compact Size
- Soft Cover Open Method
- Very silent printing through direct thermal printing method
- Easy Paper Loading
- Simple structural design for parting and sticking
- Support text and graphic printing including three types of Korean
- High Resolution (203dpi : 8dots/mm)
- Low noisy with High speed (65mm/sec)
- Easier maintenance



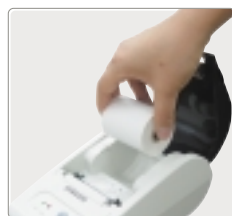
Ivory Dark Gray



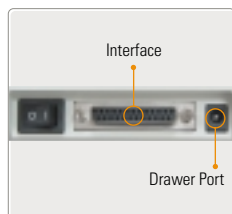
STP-103DK
Cash Drawer Port, Buzzer



Easy Paper Loading

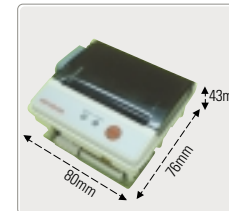


Convertible Board



SPECIFICATION FOR THE SRP-103 / 103DK THERMAL PRINTER			
PRINT	PRINT METHOD	Direct Thermal	
	PRINT SPEED	50mm / sec (11.8 LPS)	
	RESOLUTION	203 DPI (8dot / mm)	
	PAPER SUPPLY METHOD	Easy Paper Loading	
	CHARACTER SIZE	Font A : 12 x 24 Font B : 9 x 24	
	CHARACTER PER LINE	Font A : 32 Font B : 42	
	CHARACTER SETS	Alphanumeric Character	: 95
		Extended Graphic	: 128 x 7 Page (1 space page)
		International Character	: 32
	EMULATION	ESC / POS	
DRIVERS	Windows 95 / 98 / ME / 2000 / NT4.0 / XP / 2003 server, OPOS		
PAPER ROLL	WIDTH	58 ± 0.5mm	
	DIAMETER	Max. ≤ 60.0mm	
BARCODES		EAN-13, EAN-8, Code 39, Code 93, Code 128, ITF, Coda bar, UPC-A	
	RELIABILITY	MCBF 30,000,000 Lines TPH 100km	
CONNECTIVITY	INTERFACE	RS - 232C, IEEE - 1284	
POWER	SUPPLY	AC120 ~ 230V ± 10% (include) DC 24V, 1.5A	
DIMENSION		100(W) x 191(L) x 90(H) mm	
OPTIONS	CUTTER TYPE	Manual Cutter	
	COLOR	Ivory, Dark Gray	
	LANGUAGE	Buyer Language Support	
	DRAWER PORT	STP - 103DK	

Dimension (Compact size)



Soft Cover open



Fast and precise measurements printing



Just some of applications

- Medical Analyzer
- Geological Analyzer
- Receipt
- Taxi meters
- Industrial Instrument
- Chemical Analyzer
- Coupon
- Portable Printers and terminals
- Recorder
- Metallic Analyzer
- Ticket
- Bar-Code etc...

SPECIFICATION FOR THE BPP-100 PANEL THERMAL PRINTER			
PRINT	PRINT METHOD	Direct Thermal Printing	
	WIDTH	2-inch (48mm, 384dots)	
	PRINT SPEED	65mm / sec	
	RESOLUTION	203 DPI (8dot / mm)	
	PAPER SUPPLY METHOD	Easy Paper Loading	
	CHARACTER SIZES	Korean	: 18 X 24, 24 X 24
		English	: 9 X 24, 12 X 24
	CHARACTER PER LINE	42cpl (9 X 24 ASCII)	
	EMULATION	ESC / POS	
	SENSORS	Paper end sensor	
PAPER TYPE	Thermal Paper		
PAPER ROLL	WIDTH	58mm	
	DIAMETER	Max. ≤ 40	
BARCODES		EAN - 13, EAN - 8, Code 39, Code 93, Code 128, ITF, Coda bar, UPC - A	
	RELIABILITY	MCBF 50 Km	
CONNECTIVITY	INTERFACE	RC - 232C, IEEE - 1284	
INPUT POWER	LOGIC	5 VDC	
	MECHA	7.5 VDC	
DIMENSION		80(W) X 76(L), 43(H)mm	
OPTIONS	CUTTER TYPE	Manual Cutter	
	LANGUAGE	Korean, English	

BIXOLON Impact Printers

BIXOLON Samsung impact printers offer all the easy-to-use features important to the retail, hospitality and banking industries and feature BIXOLON's renowned quality and reliability. The demand for Impact printers has remained somewhat steady in the face of the growing popularity of thermal printers. Besides costing less to operate, Impact printers offer some features that are not available with thermal printers. BIXOLON offers a wide variety of dot matrix printers to fit nearly any application.



Ideal Interface Cards for Complex Kitchen Area

Ethernet Interface card

Ethernet infrastructure is more than just a way for computers to communicate with each other. Designed to increase printing speed and flexibility, the BIXOLON Ethernet Interface Card (T10/T100) provides a cost-effective solution to establish communications between host systems and your printers.

- Ethernet Local Area Networks can have expansive coverage areas with inexpensive cabling
- Auto detectable 10 / 100 base T (All in one)
- Uses standard TCP / IP protocol
- Easy installation and configuration
- Offers wide range of interface and configuration options
- Faster Communication (Up to 100 Mbps data transfer)
- Superior reliability and lower maintenance costs



Bluetooth Interface card

The BIXOLON Bluetooth module allows the installation of remote printers where difficulties in laying cables prevent the ideal system solution. Simply attaching the Bluetooth modules to the POS terminal and printers provides wireless communication with up to seven printers. There is no limit to the number of cash registers or terminals in the system. RIF-BT10 / Master Bluetooth module connects to a serial port or USB port on a cash register, PC based EPOS terminal or Bluetooth enabled PDA. The RIF-BT10F / Slave plugs into the BIXOLON printers.

- Cable free installation
- USB & Serial port connectivity
- Communicate over distances up to 325 feet
- Network support for up to seven printers
- Supporting mobile devices like PDA
- Supported OS : Windows 98SE / ME / 2000 / XP / 2003 server



new SRP-275

2nd generation Impact Printer



Ivory Dark Gray

The SRP-275 is 2nd generation Impact printer which sets you free from embarrassing paper jams. This printer has more functions such as two-color printing and versatile paper roll sizes and boasts about fast speed and less printing noise. It's really successful series from the SRP-270. Also the SRP-275 is ideal for both POS receipt printing and remote hospitality printing. It is a robust, high performance impact receipt printer which is exceptionally easy to use. Featuring drop-in paper loading, selectable auto-cutter and clamshell covers for easy access and maintenance, the SRP-275 is very reliable and prints on plain paper in three widths.

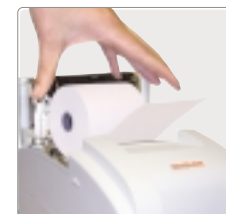


- Drop in and print paper loading : Lift the lid, drop in the roll, close the lid and print. Nothing could be easier. No more feeding rolls through slots or rollers
- Faster and quieter : Logic seeking, bi-directional print technology allows higher speed than previous models with much less noise
- Various paper width : The SRP-275 can easily be made to take different width paper roll sizes saving paper costs. The full width 76mm roll is standard and 69mm or 57mm can be chosen optionally.
- Built-in power supply
- Easy download program : Logo / firmware download program helps you use logo efficiently and easily
- Convenient printer setting program : Virtual Memory Switch Manager (VMSM) helps you to select the printer setting and default language change
- Print alarm buzzer : The SRP-275 is fitted with a print alarm buzzer as standard equipment for noisy places.



SPECIFICATION FOR THE SRP-275 IMPACT PRINTER		
PRINT	PRINT METHOD	9 pin serial impact dot matrix
	PRINT DIRECTION	Bi-directional, Logic seeking, Friction feed
	PRINT SPEED	5.1 lines per second at 40 column
	PAPER SUPPLY METHOD	Drop in and print
	DOT PITCH	0.352mm (1 / 72")
	DOT WIRE DIAMETER	0.3mm (0.01")
	CHARACTERS PER LINE	Font A : 33 Font B : 40
	PRINTING WIDTH	63.34mm (2.49")
	LINE SPACING	4.233mm (1 / 6 inch), Can be set by a command
	CHARACTER FONT	Font A : 9 x 9 Font B : 7 x 9
	CHARACTER SETS	Alphanumeric characters : 95, international characters : 48, Extended graphics : 128 x 20 pages
	MEMORY	Print buffer : 8 Kbytes, NV image : 256 Kbytes
	CONTROL CODE EMULATION	ESC / POS, Star, Citizen.
	SOFTWARE	Utilities : Firmware / NV image download, Virtual memory switchmanager
DRIVERS	Windows 95 / 98 / ME / 2000 / NT4.0 / XP / 2003 server, OPOS	
SENSORS	Paper end, paper near end, wall mounting paper near end, cover open	
BUZZER	Buzzer alarm	
PAPER ROLL	WIDTH	76, 69, 57 ± 0.5mm, 2.99", 2.74", 2.26" ± (0.22")
	THICKNESS	0.06 - 0.09mm (0.002 - 0.003")
	DIAMETER	83mm (3.27") - Core Max.19mm
RIBBON	TYPE	RRC-201 B/R (black / red), RRC-201 B (black), RRC-201 P (purple)
RELIABILITY	MCBF	18 million lines
	AUTO CUTTER	1.5 million cuts
CONNECTIVITY	INTERFACE	Serial, Parallel, USB, Ethernet10 / 100 Base-t, bluetooth
	DKD FUNCTION	2 ports
	EMC / SAFETY STANDARD	CE, FCC, UL, TUV, GS
POWER	SUPPLY	AC100V-240V ± 10%, DC24V, 1.5A Internal / External installation
OPTIONS	PAPER CUTTER	SRP-275A (tear bar), SRP-275C (auto cutter)
	COLOR	Ivory, Dark Gray
	WALL MOUNT	Wall mount bracket
	LANGUAGE	Buyer language support

Easy Paper Loading



Built-in Power Supply



Variable Paper Width



SRP-270

Impact Printer

The SRP-270 is an ideal impact printer with excellent build quality, suitable for all printing requirements. BIXOLON Samsung SRP-270 provides high reliability and convenience for users.

Worldly famous name and low maintenance cost, the SRP-270 is a solid product desirable for any business. With the considerable decrease in operation cost, SRP-270 is an appealing solution to any store managers. The SRP-270 is a versatile product providing high compatibility with any OS environments.



Ivory Dark Gray

SRP-500

Inkjet Printer

Enhances any Epos system. Makes the most of color and graphics.

Aimed at Specialty retail, department stores, restaurants, fast food and bars, convenience stores, laundry systems and anywhere where a permanent printed record is required.

Inkjet printer technology set to revolutionize receipt printing. Combining the manufacturing skills and experience of Samsung and inkjet cartridge expertise of Hewlett Packard to produce a printer that provides lower cost of ownership than thermal receipt printers with the advantage of two color print.



Ivory Dark Gray

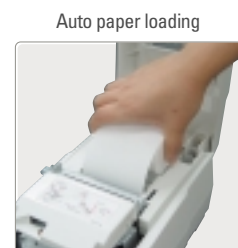


SRP-270 A (Tear-bar) SRP-270 C (Auto-cutter) SRP-270 D (Auto-cutter & take-up spool)

- Fast print speed : The SRP-270 prints at speeds of up to 4.6 lines per second
- High operational reliability : The market proven quality by world installation provides you option of an auto cutter and take up, and the ability to print one original plus two copies.
- Various interface cards with RS-232C, RS-485, Parallel, USB, Ethernet (10 / 100 Base T) and Bluetooth
- Trustworthy reliability (1.8million lines)
- Easy system integration : Drivers are available for Windows 95 / 98 / ME / NT4.0 / XP / 2003 server and OPOS



SPECIFICATION FOR THE SRP-270 IMPACT PRINTER		
PRINT	PRINT METHOD	9 pin serial impact dot matrix
	PRINT SPEED	4.6 lines per second at 40 column
	PAPER SUPPLY METHOD	Auto Paper Loading
	CHARACTERS PER LINE	Font A : 33 Font B : 40
	PRINTING WIDTH	63.34mm (2.49")
	CHARACTER FONT	Font A : 9 x 9 / Font B : 7 x 9
	CHARACTER SETS	Alphanumeric characters : 95
		Extended Graphics : 128 x 7 Page (1 space page)
		International Character : 32
	CONTROL CODE EMULATION	ESC / POS
DRIVERS	Windows 95 / 98 / ME / 2000 / NT4.0 / XP / 2003 server, OPOS	
SENSORS	Paper end sensor	
PAPER ROLL	WIDTH	76 ± 0.5mm
	PAPER TYPE	Plain Paper
	DIAMETER	Max. ϕ 83.0mm
RIBBON	TYPE	RRC-201 B / R (black / red), RRC-201 B (black), RRC 201 P (purple)
RELIABILITY	MCBF	18 million lines
	AUTO CUTTER	1 million cuts
	INTERFACE	Serial, Parallel, USB, Ethernet(10 / 100 Base-t), Bluetooth
CONNECTIVITY	DKD FUNCTION	Maximum 2 cash drawers
POWER	SUPPLY	AC120V ~ 230V ± 10%, DC24V, 1A
DIMENSION(W x L x H)	SRP-270A	160mm X 247mm X 130mm
	SRP-270C	160mm X 247mm X 149mm
	SRP-270D	160mm X 294mm X 159mm
	OPTIONS	PAPER CUTTER
COLOR		Ivory, Dark Gray
LANGUAGE		Buyer Language Support : (Including Chinese, Thai, Arabic, Turkey)

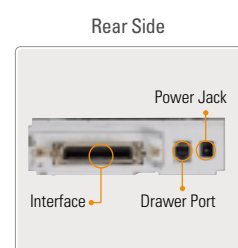


Auto paper loading



Ribbon Cassette

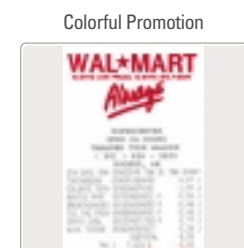
mono or 2 color



Rear Side

Power Jack
Interface
Drawer Port

- Fast print speed of 13 LPS
- Choice of four color options - black, red, green and blue - and the exclusive ability to print in any combination of two.
- Easy to integrate. Major emulations readily available.
- Drop - in replacement for leading impact receipt printers.
- Print two - color graphics, logos, even coupons with high resolution
- No degradation of printing quality as with ribbons
- No smearing or ink transfer
- Permanent printing



Colorful Promotion



Easy Ink replacement



Ink Cartridge

Black, Red, Green, Blue

Just some of applications

- POS: Customer Receipts, End of Day Report
- Warehouse: Barcode Labels, Address Labels, Reports
- Restaurant: Guest Checks, Kitchen
- Data Terminals: Service Reports, Data Loggers



SPECIFICATION FOR THE SRP-500 INKJET PRINTER		
PRINT	PRINT METHOD	Color Inkjet
	PRINT SPEED	13 LPS (at 12 column)
	RESOLUTION	104 / 208 DPI
	PAPER SUPPLY METHOD	Easy Paper Loading
	CHARACTERS PER LINE	Font A : 32, Font B : 43
	CHARACTER FONT	Font A : 12 x 14, Font B : 12 x 12
	CHARACTER SETS	Alphanumeric characters : 95
		Extended Graphics : 128 x 12 Page
		International Character : 32
	EMULATION	ESC/POS, IDP3541
DRIVERS	Windows 95 / 98 / ME / 2000 / NT4.0 / XP / 2003 server, OPOS	
SENSORS	Paper near end, Low ink indicator, No cartridge indicator, Front / Rear cover open	
PAPER ROLL	WIDTH	76 ± 0.5mm
	PAPER TYPE	Plain Paper
	DIAMETER	Max. ϕ 83.0mm
BARCODES		EAN - 13, EAN - 8, Code39, Code128, ITF, Coda bar, UPC - A, UPC - E
RELIABILITY	MCBF	18,000,000 lines
	AUTO CUTTER	1.5 million cuts
CONNECTIVITY	INTERFACE	Serial, Parallel, USB, Ethernet (10 / 100 Base-t), Bluetooth
	DRAWER PORT	2 ports
POWER	SUPPLY	AC 96 ~ 264V (Include), DC 24V, 2.5A
OPTIONS	AUTO CUTTER TYPE	Rotary
	COLOR	Ivory, Dark Gray
	LANGUAGE	Buyer Language Support

SRP-770II

Thermal Label Printer

The BIXOLON Samsung SRP-770II direct thermal label printer provides top quality label printing for any application. With a printing speed of 5 inches per second the SRP-770II will keep pace with demand.

High print definition ensures excellent read quality, even with the smallest text and the latest bar codes. Samlabel 'FREE' Professional Label Creation Software for PC.



SRP-770II Type

SRP-770II C Type

- Print speed 127mm/sec.
- Label width 35mm (1.5") to 112mm (4.4")
- Most bar code types available
 - 1D type(10 kinds) 2D type (2 kinds)
- Versatile fonts supported
- Logo printing (BMP, PCX file)
- Template supported
- Three different types, Tear-bar type, Auto-Cutter type, Linerless type
- Powerful label design program (SAMLABEL, Max, Pro versions)

Just some of applications

- Retail Logistics
- Medical Quality control
- Manufacturing Security
- Warehousing Pre-packing



SPECIFICATION FOR THE SRP-770II LABEL PRINTER		
PRINT	PRINT METHOD	Direct Thermal
	PRINT SPEED	127mm / sec (5.1 IPS)
	RESOLUTION	203 DPI (8dot / mm)
	PAPER SUPPLY METHOD	Easy Paper Loading
	CHARACTER SETS	7 resident bitmap fonts, 7 code page Expandable up to 4X, soft storage BMP, PCX graphic supported
	EMULATION	SLCS / EPL II, ZPLII, ESC-POS
	DRIVERS	Windows 95 / 98 / ME / 2000 / NT4.0 / XP / 2003 server
PAPER	SENSORS	Gap, Black mark, Notch Sensor
	PAPER TYPE	Label, Tag, Continuous, Fan - fold
	WIDTH	1.5" (38.1mm) ~ 4.2" (106.0mm), 2.0" (50.8mm) ~ 4.4" (112.00)
	DIAMETER	I.D. 1" (25.4mm) ~ 1.5" (38.1mm), O.D. 5.1" (130.0mm)
	PAPER LENGTH	0.6" (15.2mm) ~ 12" (304.8mm)
THICKNESS	0.06~0.18mm	
BARCODES		EAN - 13, EAN - 8, Code 39, Code 93, Code 128, ITF, Coda bar, UPC - A, UPC - E, PDF417, Maxicode
RELIABILITY	MCBF	20,000,000 Lines
	AUTO CUTTER	1 million cuts
	TPH	50km
CONNECTIVITY	INTERFACE	Serial, Parallel, USB (All standard), Ethernet
POWER	SUPPLY	AC 100 ~ 240 V ± 10% (Include), DC 24V, 3.75A
OPTIONS	AUTO CUTTER	Guillotine
	LANGUAGE	Buyer Language Support

BCD-1000

Customer Display

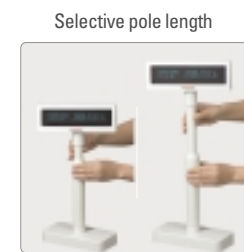
BIXOLON's BCD-1000 is a slim customer display that provides your customers clear, easy-to-read information at the fastest data-transfer rate available. The easy-to-use VFD display makes an attractive communication with customers by its fascinating design and rich colors.

The BCD-1000 is a 2 x 20 line 5mm character height display that comes with much functionality that simply is not found in other vendors' customer displays. User-definable characters, and a built-in real time clock are all standard features of the unit's firmware. The BCD-1000 comes with variety of interfaces, can emulate many popular command sets, and has better visibility due to an optically matched lens and wider character pitch. Best of all, this premium pole display is also one of the most affordable on the market.

- Selective pole length : The BCD - 1000 has a special function to control the pole length as you want
- Clear, easy-to-read 20 Characters ; 2 Lines Dot Matrix, Comma, Decimal Point, Annunciator
- Automatic message scrolling
- Adjustable viewing angles
- Bright blue and green vacuum fluorescent display
- Easily programmable for customer messages
- Available in BIXOLON Ivory and BIXOLON Dark Gray



Ivory Dark Gray



SPECIFICATION FOR THE BCD-1000 BIXOLON CUSTOMER DISPLAY		
GENERAL	DISPLAY METHOD / COLOR	VFD (Vacuum Fluorescent Display) / Blue Green (505mm)
	NUMBER OF CHARACTERS	40(20 Characters ; 2 Lines)
	BRIGHTNESS	800 ~ 1,000 cd / m2
	CHARACTER FONT	5 ; 7 dot matrix, comma, decimal point, annunciator
	CHARACTER TYPE	Alphanumeric : 95, International Character : 37 Graphic Character 128 ; 12 pages
	CHARACTER SIZE / PITCH	5.5 ; 10.5mm / 7.4mm
	DOWNLOAD CHARACTERS	95 characters
	VIEWING ANGLE	52° (5 Positions)
	HORIZONTAL ROTATION	Max. 336°
	CASE COLOR	BIXOLON Ivory, BIXOLON Dark Gray
	OVER ALL DIMENSIONS(mm)	217(W) ; 102(D) ; 374(H) 219(W) ; 48.5(D) ; 80(H)(VFD block)
	EMULATION	Epson ESC / POS, ADM787 / 788, DSP800, AEDEX, UTC Standard, UTC Enhance, CD5220, NCR Real POS, PD6000, IC2002
	INTERFACE	RS232C (+ 5vdc all in one Cable)
	RELIABILITY	MCBF
POWER	CONSUMPTION	5.0 ~ 24 vdc / 5 ~ 8W
OPTION	FACTORY OPTION	USB Interface Sub PCB A type
SAFETY	EMC	VCCI Class A, FCC Class A, CE Marking
	SAFETY STANDARDS	UL, CSA, TÜV

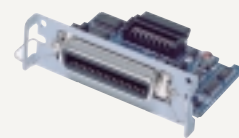
OPTION

Interface

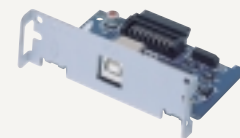
BLXOLON Samsung printers feature a wide and versatile range of interface including ethernet and Bluetooth. Besides satisfying customer needs, these enable easy upgrading in the future, an important consideration for growing business.



IFA-S Type RS-232C
SRP-270, SRP-350, SRP-350plus
SRP-370, SRP-372



IFA-P Type IEEE-1284
SRP-270, SRP-350, SRP-350plus
SRP-370, SRP-372



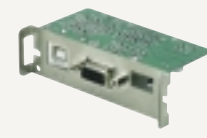
IFA-U Type USB 1.0, USB 2.0
SRP-270, SRP-350, SRP-350plus
SRP-370, SRP-372



IFA-SF Type RS-485
SRP-270, SRP-350, SRP-350plus
SRP-370, SRP-372



IFA-E Type 10/100 BASE T
SRP-270, SRP-350, SRP-350plus
SRP-370, SRP-372



IFA-SU Type USB + Serial
SRP-350, SRP-350plus,
SRP-370, SRP-372, SRP-270



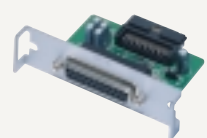
RIF-BTM10 Bluetooth
SRP-270, SRP-350, SRP-350plus
SRP-370, SRP-275, SRP-372



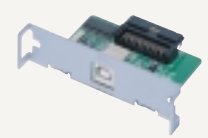
RIF-BTS10 Bluetooth
SRP-270, SRP-350, SRP-350plus
SRP-370, SRP-275, SRP-372



IFC-S Type RS-232C
SRP-500, SRP-275



IFC-P Type IEEE-1284
SRP-500, SRP-275



IFC-U Type USB 1.0
SRP-500, SRP-275



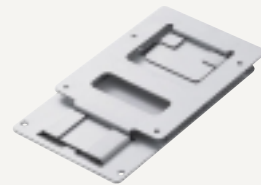
IFC-E Type 10/100 BASE T
SRP-500, SRP-275



IFA-PW Type Powered USB
SRP-350, SRP-350plus, SRP-370,
SRP-270, SRP-275

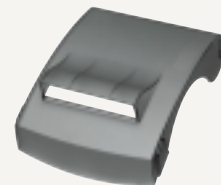
Wall mount

RWM-350 SRP-350, SRP-350plus
RWM-370 SRP-370, SRP-372
RWM-275 SRP-275



Splash cover

RSC-350 SRP-350, SRP-350plus
RSC-370 SRP-370, SRP-372
RSC-275 SRP-275



Buzzer

RBC-100
SRP-270, SRP-275, SRP-350,
SRP-350plus, SRP-370/372, SRP-500



Ink ribbon

RRC-201B(Black)
RRC-201B/R(Black & Red)
RRC-201P(Purple)
SRP-270, SRP-275



Ink cartridge

RIC-500B/R/C/G
SRP-500
HP Inkjet Cartridges (C6602x)



PRINTER SET

SRP-350plus Thermal Receipt Printer



Designed specifically for high-volume retail and hospitality environments, the SRP-350plus delivers more speed and more reliability than ever before. It offers 200mm/sec printing speed of text and graphics, two-color capability and new ease-of-use features.

SRP-350plusF Thermal Fiscal Printer



BIXOLON has newly released a thermal fiscal printer SRP-350plusF. With its 1 station, electronic journal thermal fiscal printer, BIXOLON provides high-speed printing of receipts and journals. The specialist for fiscal POS solutions reaches speeds of 200mm per second when printing both receipts and journals.

SRP-370/372 Thermal Receipt Printer



BIXOLON Samsung Mini Printers keep at the forefront of technology and commitment to reliability with new model. The SRP-370 two color fast print speed thermal printer is ideal for retail and hospitality applications and allows you to print receipt with company logos and barcodes plus add coupons.

SRP-350 Thermal Printer



With speed, quality and value, the Samsung SRP-350 thermal receipt printer is clearly first in its class. It easily with stands the rigors of tough environment, printing receipts, coupons, logos or bar codes.

PRINT	PRINTING METHOD	Direct Thermal	Direct Thermal	Direct Thermal	Direct Thermal
	PRINTING SPEED	200mm / sec	200mm / sec	200mm / sec (61.7 LPS)	150mm / sec (46.2LPS)
	RESOLUTION (dpi)	180 dpi (7dot / mm)	180 dpi (7dot / mm)	SRP-370:180 dpi (7dot / mm) , SRP-372:203 dpi (8dot / mm)	180 dpi (7 dot / mm)
	CHARACTER SIZE	Font A : 12 x 24 Font B: 9 x 24	Font A : 12 x 24 Font B: 9 x 24	Font A : 12 x 24 Font B: 9 x 24	FontA : 12 x 24 FontB : 9 x 17
	CHARACTER PER LINE	FontA : 42 FontB : 56	FontA : 42 FontB : 56	Font A : 42, 48(372) Font B : 56, 64(372)	FontA : 42 FontB : 56
PAPER SPECIFICATION	PAPER TYPE	Thermal Paper	Thermal Paper	Mono & 2 color thermal paper	Thermal Paper
	PAPER WIDTH	79.5mm ± 0.5mm	79.5mm ± 0.5mm	57.5 ± 0.5mm, 79.5 ± 0.5mm, 82.5 ± 0.5mm	79.5 ± 0.5mm
	PAPER ROLL DIAMETER	Max. ϕ j83.0mm	Max. ϕ j83.0mm	Max. ϕ j105.0mm	Max. ϕ j83.0mm
PAPER SUPPLY METHOD		Easy paper loading	Easy paper loading	Easy Paper Loading	Easy paper loading
RELIABILITY	MCBF	37,000,000 Lines	37,000,000 Lines	70,000,000 Lines	37,000,000 Lines
	TPH LINE	150km	150km	150Km	150km
CHARACTER SET		Alphanumeric Character : 95 Extended Graphic : 128 x 7 page (1 space page) International Character : 32	Alphanumeric Character : 95 Extended Graphic : 128 x 7 page (1 space page) International Character : 32	Alphanumeric Character : 96 Extended Graphic : 128 x 17 page (1space page) International Character : 32	Alphanumeric Character : 95 Extended Graphic : 128 x 7 page (1 space page) International Character : 32
	BARCODES	1D : EAN - 13, EAN - 8, Code 39, Code 93, Code 128, ITF, Coda bar, UPC - A, UPC - E 2D : PDF417, QR Code	1D : EAN - 13, EAN - 8, Code 39, Code 93, Code 128, ITF, Coda bar, UPC - A, UPC - E 2D : PDF417, QR Code	1D : EAN-13, EAN-8, Code 39, Code 93, Code 128, ITF, Coda Bar, UPC-A, UPC-E 2D : PDF417, QR Code	1D : EAN - 13, EAN - 8, Code 39, Code 93, Code 128, ITF, Coda bar, UPC - A, UPC - E 2D : PDF417, QR Code
	EMULATION	ESC / POS	ESC / POS	ESC / POS, Citizen, Star	ESC / POS
FLASH MEMORY		8 Mbit	8 Mbit	16 Mbit	8 Mbit
DRIVER		Win 95/98/Me/2000/NT/XP /2003 server, OPOS	Win 95/98/Me/2000/NT/XP /2003 server, OPOS	Win 95/98/Me/2000/NT/XP /2003 server, OPOS	Win 95/98/Me/2000/NT/XP /2003 server, OPOS
SENSOR		Paper near end sensor / end sensor	Paper near end sensor / end sensor	Paper Near End Sensor, Paper End Sensor	Paper near end sensor / end sensor
DRAWER PORT		2 ports	2 ports	2 ports	2 ports
INTERFACE		RS-232C, IEEE-1284, USB, RS-485, Ethernet, Bluetooth	RS-232C, IEEE-1284, USB, RS-485, Ethernet, Bluetooth	RS-232C, IEEE1284, USB, Ethernet, Bluetooth	RS-232C, IEEE-1284, USB, RS-485, Ethernet, Bluetooth
OPTION	WALL MOUNT	RWM-350	RWM-350	RWM-370	RWM-350
	LANGUAGE	Buyer Language Support	Buyer Language Support	Buyer Language Support	Buyer Language Support
POWER SUPPLY(ADAPTER)		AC 120 ~ 230V ± 10% (include), DC 24V, 2.3A	AC 120 ~ 230V ± 10% (include), DC 24V, 2.3A	AC 120V~230V ± 10% (Include), DC 24V, 2.3A	AC 120 ~ 230V ± 10% (include), DC 24V, 2.3A
DIMENSIONS	W X L X H (mm)	145 x 195 x 146	145 x 195 x 177	146 x 204 x 160	145 x 195 x 146
OPERATING TEMP.		0 ~ 45°C	0 ~ 45°C	0 ~ 45°C	0 ~ 45°C
AUTO CUTTER	TYPE	Guillotine	Guillotine	Guillotine	Guillotine
	RELIABILITY	1,500,000 cuts	1,500,000 cuts	1,500,000 cuts	1,500,000 cuts

PRINTER SET

STP-131 Thermal Printer



Accommodation of Serial & Parallel in one board and versatile download function such as logo, firmware and font.

STP-103/103DK Thermal Printer



With speed, quality and value, the BIXOLON Samsung STP-103 thermal receipt printer is clearly first in its class. The user-friendly design incorporates a small footprint, drop and print.

BPP-100 Panel Thermal Printer



With its speed, quality and cost-effective efficiency, the BIXOLON Samsung BPP-100 is clearly an ideal product. This user-friendly design incorporates a very compact size, drop and print, and can print at a speed of 65mm per second.

SRP-275 2nd generation Impact Printer



The SRP-275 is 2nd generation Impact printer which sets you free from embarrassing paper jams. This printer has more functions such as two-color printing and versatile paper roll sizes and boasts about fast speed and less printing noise. It's really successful series from SRP-270.

SRP-270 2 Color Impact dot Printer



World famous receipt printer SRP-270 features the fastest printing speed, high durability. It is an ideal printer to install in any environment where high-volume transactions are required.

SRP-500 Color Inkjet Printer



Add a splash of color to print distinctive receipts with logos, coupons, rebates and specials. Using HP's state-of-the-art inkjet technology, the SRP-500 combines high speed and low cost of ownership.

SRP-770 Label Printer



Produces direct thermal labels for retail, warehouse, shipping / receiving, medical and many other applications. USB, serial and parallel interface standard on every printer.

BCD-1000 Customer Display



BIXOLON's BCD-1000 is a slim customer display that provides your customers clear, easy-to-read information at the fastest data-transfer rate available. The easy-to-use VFD display makes at attractive communication with customers by its fascinating design and rich colors.

PRINT	PRINTING METHOD	Direct Thermal	Direct Thermal	Direct Thermal	9 pin serial impact dot matrix
	PRINTING SPEED	75mm / sec (17.3LPS)	50mm / sec (11.8LPS)	65mm / sec	5.1 lines per second at 40 column
	RESOLUTION (dpi)	180 dpi (7 dot / mm)	203 dpi (8 dot / mm)	203 dpi (8 dot / mm)	
	CHARACTER SIZE	FontA : 12 x 24 FontB : 9 x 24	FontA : 12 x 24 FontB : 9 x 24	Korea : 18 x 24, 24 x 24 English : 9 x 24, 12 x 24	FontA : 9 x 9 FontB : 7 x 9
PAPER SPECIFICATION	CHARACTER PER LINE	FontA : 42 FontB : 56	FontA : 32 FontB : 42	42cpl (9 x 24 ASCII)	Font A : 33 Font B : 40
	PAPER TYPE	Thermal Paper	Thermal Paper	Thermal Paper	
	PAPER WIDTH	79.5 ± 0.5mm	58 ± 0.5mm	2 inch(48mm, 384 dots)	63.34mm (2.49")
	PAPER ROLL DIAMETER	Max.ø j83.0mm	Max.ø j60.0mm	Max.ø j40.0mm	Max.ø j83.0mm
PAPER SUPPLY METHOD	Auto paper loading				
RELIABILITY	MCBF	30,000,000 Lines	30,000,000 Lines	50km	18,000,000 Lines
	TPH LINE	100km	100km		Alphanumeric characters : 95
CHARACTER SET	Alphanumeric Character : 95 Extended Graphic : 128 x 7 page (1 space page) International Character : 32		Alphanumeric Character : 95 Extended Graphic : 128 x 7 page (1 space page) International Character : 32		Extended graphics : 128 x 20 pages international characters : 48
BARCODES	EAN-13, EAN-8, Code 39, Code 93, Code 128, ITF, Coda Bar, UPC-A		EAN-13, EAN-8, Code 39, Code 93, Code 128, ITF, Coda Bar, UPC-A, UPC-E		EAN-13, EAN-8, Code 39, Code 93, Code 128, ITF, Coda bar, UPC-A
EMULATION	ESC / POS				
FLASH MEMORY	8 Mbit		8 Mbit		ESC / POS, Star, Citizen.
DRIVER	Win 95/98/Me/2000/NT/XP /2003 server, OPOS		Win 95/98/Me/2000/NT/XP		Print buffer : 8 Kbytes NV image : 256 Kbytes Win 95/98/Me/2000/NT/XP
SENSOR	Paper near end sensor / end sensor		Paper near end sensor / end sensor		Paper end sensor /2003 server, OPOS Paper end, paper near end, wall mounting paper near end
DRAWER PORT	2 ports		1 port		
INTERFACE	RS-232C, IEEE-1284		RS-232C, IEEE-1284		RS-23C, IEEE-1284
OPTION	WALL MOUNT				
	LANGUAGE	Buyer Language Support	Buyer Language Support	Korean, English	Buyer Language Support
POWER SUPPLY(ADAPTER)	AC 120 ~ 230V ± 10% (include), DC 24V, 2 ~ 2.3A		AC 120 ~ 230V ± 10% (include), DC 24V, 1.5A		LOGIC - 5VDC MECHA - 7.5VDC
DIMENSIONS	W X L X H (mm)	150 x 205 x 132	100 x 191 x 90	80 x 76 x 43	A : 160 x 239 x 157 C : 160 x 239 x 157
OPERATING TEMP.	0 ~ 45°C				
AUTO CUTTER	TYPE	Guillotine	Manual cutter	Manual cutter	Rotary
	RELIABILITY	1,500,000 cuts			

PRINTER SET

PRINT	PRINTING METHOD	9Pin Serial dot matrix	Color Inkjet	Direct Thermal	Display Method : VFD
	PRINTING SPEED	4.6 LPS (40 mm / sec)	13LPS (at 12 column)	127 mm / sec (5 LPS)	
	RESOLUTION (dpi)		104 / 208 dpi	203 dpi (8 dot / mm)	Brightness : 800 ~ 1,000 cd / sq
	CHARACTER SIZE	FontA : 9 x 9 FontB : 7 x 9	FontA : 12 x 14 FontB : 12 x 12	-	5.5 x 10.5mm / 7.4mm
PAPER SPECIFICATION	CHARACTER PER LINE	Font A : 33 Font B : 40	FontA : 32 FontB : 43	-	40 (20 characters x 1 Lines)
	PAPER TYPE	Plain paper	Plain paper	Labels, tag, Continuous, Fan-fold	Character Font : 5 x 7dot matrix, comma, decimal point, annunciator
	PAPER WIDTH	76 ± 0.5mm	76 ± 0.5mm	1 ~ 5" (38.1mm) ~ 4.2" (106.0mm) 2.0" (50.8mm) ~ 4.4" (112.0mm)	
	PAPER ROLL DIAMETER	Max.ø j83.0mm	Max.ø j83.0mm	Inside Dia. 1 ~ 1.5" (25.4 ~ 38.1mm) Outside Dia. Max. 5.1" (130mm)	
PAPER SUPPLY METHOD	Auto paper loading		Easy paper loading	Easy paper loading	Download Characters : 95 characters
RELIABILITY	MCBF	18,000,000 Lines	18,000,000 Lines	20,000,000 Lines	
	TPH LINE			50km	20,000 hours
CHARACTER SET	Alphanumeric Character : 95 Extended Graphic : 128 x 7 page (1 space page) International Character : 32		Alphanumeric Character : 95 Extended Graphic : 128 x 12 page International Character : 32	7 resident bitmap fonts, 7 code page, expandable up to 4X, soft font storage BMP, PCX graphic supported	Alphanumeric Character : 95 International Character : 37 Graphic Character : 128 x 12pages
BARCODES			EAN-13, EAN-8, Code 39, Code 93, Code 128, ITF, Coda Bar, UPC-A, UPC-E	Code 39, Code 128, Interleave 2 of 5, Coda Bar, Code 93, UPC-A, UPC-E, EAN-8, EAN-13, UCC-EAN 128, Maxicode(2D), PDF 417(2D)	Viewing Angle : 52° (5 positions) Horizontal Rotation : Max. 336°
EMULATION	ESC / POS				
FLASH MEMORY	8 Mbit		8 Mbit		ESC / POS, ADM 787 / 788, DSP800, AEDEX, UTC, Standard, UTC Enhance,
DRIVER	Win 95/98/Me/2000/NT/XP /2003 server		Win 95/98/Me/2000/NT/XP /2003 server/OPOS		CD5220, NCR Real Pos, PD 6000, ICD 2002
SENSOR	Paper end sensor		Low ink indicator, No cartridge indicator, Paper near end sensor, Front / Rear cover open sensor		Gap, Black mark, Notch sensor
DRAWER PORT	2 ports		2 ports		
INTERFACE	RS-232C, IEEE-1284, USB, RS-485, Ethernet, Bluetooth		RS-232C, IEEE-1284, USB, Ethernet, Bluetooth		RS-232C, IEEE-1284, USB (All standard)
OPTION	WALL MOUNT				
	LANGUAGE	Buyer Language Support	Buyer Language Support	Buyer Language Support	Factory option : USB Interface Sub PCB A Type
POWER SUPPLY(ADAPTER)	AC120 ~ 230V ± 10% (include), DC 24V, 1A		AC 96 ~ 264V (include), 2.5A		AC 100V ~ 240V ± 10% (include), DC 24V, 3.75A
DIMENSIONS	W X L X H (mm)	Type A : 160 x 249 x 130 Type B : 160 x 249 x 149 Type C : 160 x 249 x 160	172 x 226 x 152		184 x 221 x 171 217 x 102 x 374 219 x 48.5 x 80 (VFD black)
OPERATING TEMP.	0 ~ 45°C				
AUTO CUTTER	TYPE	Guillotine	Rotary	Guillotine	
	RELIABILITY	1,500,000 cuts			

MECHANISM

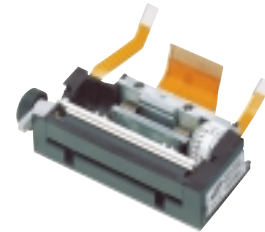
Thermal Printer Mechanism

SMP600



3 inch

SMP610



2 inch

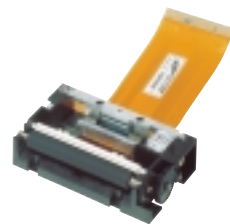
SMP610H



2 inch

PRINTING METHOD		Thermal Line Dot Printing	Thermal Line Dot Printing	Thermal Line Dot Printing
RESOLUTION (dpi)		7 dot/inch (180 dpi)	8 dot/mm (203 dpi)	8 dot/mm (203 dpi)
PRINTING WIDTH		72mm (512 dots)	48mm (384 dots)	48mm (384 dots)
PRINTING SPEED		73mm/sec (at 24DCV)	60mm/s (at 8.5 DCV)	62.5mm/sec (at 7.2 DCV)
PAPER WIDTH		79.5 ± 0.5mm	57.5 ± 0.5mm	57.5 ± 0.5mm
DOT SIZE (W X M mm)		0.141 x 0.141	0.125 x 0.125	0.125 x 0.125
POWER SUPPLY	Drive	24VDC ± 7%	5.0 ~ 8.5 DCV	3.6 ~ 7.2 DCV
	Logic	5VDC ± 5%	5 DCV ± 5%	5 DCV ± 5%
RELIABILITY	Head	5 x 10 ⁷ pulses	5 x 10 ⁷ Pulses	1 x 10 ⁸ pulses
	Mechanism	10,000,000 Lines	50Km	50Km
CUTTER METHOD OF PAPER		Manual Cutter	-	with Auto cutter
		Auto Cutter (Option)		(Partial cut)
PAPER SUPPLY METHOD		Auto paper loading	Auto paper loading	Auto paper loading
DIMENSIONS (W X L X H mm)		110.1 x 69.7 x 43	80.5 x 34.5 x 17.5	73.8 x 42 x 20

SMP620



2 inch

SMP640



2 inch, Mobile Type

SMP650



2 inch, Compact size

PRINTING METHOD		Thermal Line Dot Printing	Thermal Line Dot Printing	Thermal Line Dot Printing
RESOLUTION (dpi)		8 dot/mm (203 dpi)	8 dot/mm (203 dpi)	8 dot / mm (203 dpi)
PRINTING WIDTH		48mm (384 dots)	48mm (384 dots)	48mm (384 dots)
PRINTING SPEED		65mm/sec (at 7.2 DCV)	70mm/sec (at 7.2 DCV)	65mm / sec (at 7.2 DCV)
PAPER WIDTH		57.5 ± 0.5mm	57.5 ± 0.5mm	57.5 ± 0.5mm
DOT SIZE (W X M mm)		0.125 x 0.125	0.125 x 0.125	0.125 x 0.125
POWER SUPPLY	Drive	5.0 ~ 8.5 DCV	3.6 ~ 7.2 DCV	3.6 ~ 7.2 DCV
	Logic	5 DCV ± 5%	5 DCV ± 5%	5 DCV ± 5%
RELIABILITY	Head	5 x 10 ⁷ pulses	1 x 10 ⁸ pulses	5 x 10 ⁷ pulses
	Mechanism	50Km	50Km	50Km
CUTTER METHOD OF PAPER		-	-	-
PAPER SUPPLY METHOD		Easy paper loading	Easy paper loading	Easy paper loading
DIMENSIONS (W X L X H mm)		72.5 x 39.5 x 16	66.7 x 30.3 x 30.6	68.8 x 32.5 x 15.5

MECHANISM

Impact Printer Mechanism

new SMP2000 ¥-

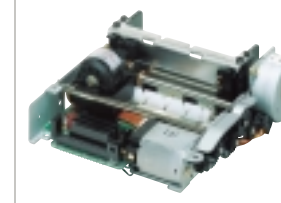


new SMP2000 ¥-A

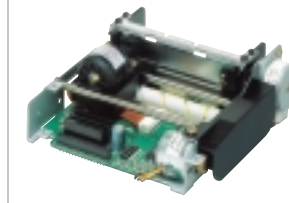


PRINT SPEED (LPS)		4.5 LPS (3 Inch)	4.5 LPS (3 Inch)
PRINT DIRECTION		Bi-Direction	Bi-Direction
PRINTER METHOD		9-pin, Serial Impact dot	9-pin, Serial Impact dot
PRINTING WIDTH (mm)		45.3 (2.3 Inch), 63.5 (3 Inch)	45.3 (2.3 Inch), 63.5 (3 Inch)
RESOLUTION (dpi)	Horizontal	168	168
	Vertical	144	144
PAPER	Media	Roll Paper	Roll Paper
	Width (mm)	57.5 ± 0.5, 76.2 ± 0.7	57.5 (2.3 Inch), 76.2 (3 Inch)
	Thickness	With copy (2P) 0.2 mm	With copy (2P) 0.2 mm
RELIABILITY		10 Million Lines	10 Million Lines
HEAD LIFE		300 Million dots / Wire	300 Million dots/Wire
VOLTAGE	Mechanism	24V ± 10%	24V ± 10%
	Logic	5V ± 5%	5V ± 5%
FONT SIZE		3 Inch : 7 x 9, 9 x 9, 16 x 16	3 Inch : 7 x 9, 9 x 9, 16 x 16
		2.3 Inch : 7 x 9, 9 x 9, 16 x 16	2.3 Inch : 7 x 9, 9 x 9, 16 x 16
PRINTING COLUMNS	Font A (7 x 9)	30 (2.3 Inch), 42 (3 Inch)	30 (2.3 Inch), 42 (3 Inch)
	Font B (9 x 9)	25 (2.3 Inch), 35 (3 Inch)	25 (2.3 Inch), 35 (3 Inch)
OPERATION TEMPERATURE		0 ~ 50 °C	0 ~ 50 °C
PAPER FEEDING		Performed by step motor	Performed by step motor
WEIGHT (G)		435	746
DIMENSION (W X L X H mm)		127.8 x 100.3 x 53	127.8 x 100.3 x 72.8
OPTION	Black mark sensor	Applicable	Applicable
	Auto Cutter	Applicable	Applicable

SMP130



SMP136



SMP150



PRINT SPEED (LPS)		4.0 LPS (40 Column only)	4.5 (40 Column), 8.0 (20 Column)	4.3 LPS (43 Column), 4.5 LPS (40 Column)
PRINT DIRECTION		Bi-Direction	Bi-Direction	Bi-Direction
PRINTER METHOD		9-pin, Serial impact dot	9-pin, Serial impact dot	9-pin, Serial Impact dot
PRINTING WIDTH (mm)		53.2	53.2	53.2
RESOLUTION (dpi)	Horizontal	172	172	172
	Vertical	72	144	144
PAPER	Media	Fan fold	Fan fold	Fan Fold
	Width (mm)	76.2 ± 0.7	76.2 ± 0.7	76.2 ± 0.7
	Thickness	1 Sheet : 0.06 ~ 0.085 mm. Total 0.2 mm	1 Sheet : 0.06 ~ 0.085 mm. Total 0.2 mm	1 Sheet : 0.06 ~ 1.085 mm. Total 0.2 mm
RELIABILITY		5 Million Lines	5 Million Lines	5 Million Lines
HEAD LIFE		200 Million Dots/Wire	200 Million Dots/Wire	200 Million dots / wire
VOLTAGE	Mechanism	24V ± 10 %	24V ± 10 %	24V ± 10 %
	Logic	5V ± 5 %	5V ± 5 %	5V ± 5 %
FONT SIZE		7 x 9, 9 x 9	7 x 9, 9 x 9, 16 x 16	7 x 9, 9 x 9, 16 x 16
PRINTING COLUMNS	Font A (7x9)	40	40	40
	Font B (9x9)	32	32	32
OPERATION TEMPERATURE		0 ~ 50 °C	0 ~ 50 °C	0 ~ 50 °C
PAPER FEEDING		Performed by Step motor	Performed by Step motor	Performed by step motor
WEIGHT (G)		410	345	335
DIMENSION (WXLXHmm)		114.9 x 107.8 x 35.8	113.5 x 107.8 x 35.8	103.3 x 90.5 x 35
OPTION	Black mark sensor	Not applicable	Not applicable	Not applicable
	Auto Cutter	Not applicable	Not applicable	Not applicable