

Twyford Parish Landscape Assessment Part 1: Landscape character assessment



The terra firma Consultancy Ltd.
Cedar Court, 5 College Street, Petersfield, Hampshire, GU31 4AE
tel: +44 (0)1730 262040 | www.terrafirmac consultancy.com

February 2016

CONTENTS

1.INTRODUCTION.....	1
2.LANDSCAPE SETTING.....	2
2.1 Location	2
2.2 Landscape Designation - South Downs National Park	2
2.3 Landscape Character Context	2
2.4 Topography and Hydrology	3
2.5 Vegetation and Ecology	4
2.6 Historic landscape	4
2.7 Perceptual/Experiential Landscape	5
2.8 Settlement Pattern	5
2.9 Settlement Gaps	6
2.10 Setting of Winchester	6
2.11 Important visual landmarks and features within area and wider context	6
2.12 Key views from wider landscape	6
3.TWYFORD PARISH LANDSCAPE CHARACTER AREAS	7
3.1 Twyford Landscape Character Area A – Itchen Valley North	9
3.2 Landscape Character Area B – Itchen Valley South	16
3.3 Landscape Character Area C – Itchen Valley Slopes	22
3.4 Landscape Character Area D – Hazeley Dry Valley	28
3.5 Landscape Character Area E – Twyford Down	35
3.6 Landscape Character Area F – Hazeley Down	42
3.7 Landscape Character Area G – Cockscomb Hill Downland Mosaic	48
4. REFERENCES	55

FIGURES

- Topography
- Landscape Designations and SDNPA Landscape Character Areas
- Historic Designations
- Ecological Designations
- Access
- Flood Map

1. INTRODUCTION

General

Twyford Parish Council appointed The terra firma Consultancy in November 2015 to produce a *Twyford Parish Landscape Assessment*. This study is formed of three parts:

Part 1: Twyford Landscape Character Assessment,
Part 2: Twyford Housing Site Assessment and
Part 3: Twyford Settlement Boundary Review.

The European Landscape Convention (ELC) definition of “landscape” is:
“ *an area, as perceived by people, whose character is the result of the action and interaction of natural and / or human factors.*”

The Parish of Twyford falls wholly in the South Downs National Park (SDNP), which is given the highest status of protection in the NPPF, along with Area of Outstanding Natural Beauty and the Norfolk Broads, in relation to landscape and scenic beauty. Conserving and enhancing the natural beauty, wildlife and cultural heritage of the area is a core purpose of the South Downs National Park Authority (SDNPA) and is central to the South Down Local Plan which was in draft at the time of producing this study. The other core purpose of the SDNPA is to promote opportunities for the understanding and enjoyment of the special qualities of the Park by the public. The SDNPA also has a duty when carrying out the purposes to: seek to foster the economic and social well-being of the local communities within the National Park. The Local Plan stresses the importance of conserving and enhancing the open and undeveloped nature of existing gaps between settlements.

The aim of this study is to assist Twyford Parish in the preparation and adoption of the Twyford Neighbourhood Plan (TNP). The study will form part of the TNP’s evidence base and will assist in the housing site selection process. The study will provide a robust landscape evidence base that will be weighed with all the other evidence used in plan making and planning decisions.

The Study builds on published landscape character studies (South Downs Integrated Landscape Character Assessment (2011) (SDILCA) and the Winchester City Council: Landscape Character Assessment (2002) (WCCLCA)) providing a more detailed level of character assessment.

Community participation has been used to draw upon local knowledge and perceptions of the landscape and the setting of the settlement.

Objectives of the Study

Overall the Study aims to provide a transparent, consistent, objective and robust approach to the three parts which form the *Twyford Parish Landscape Assessment*, to provide the Parish and Local Planning Authority officers with evidence to understand where the potential landscape and visual impacts would be greatest and identify which areas, if any, could best accommodate change.

Part 1: Twyford Landscape Character Assessment identifies and describes variation in the character of the landscape across Twyford Parish. It identifies Twyford Landscape Character Areas (TLCAs) which exhibit unique combinations of elements and features (characteristics) that make the landscape areas distinctive and makes land management recommendations and notes development considerations for each TLCA. The boundaries of these TLCAs are based on the wider LCAs identified in the SDILCA and detailed desk-base and fieldwork assessment.

Part 2: Twyford Housing Site Assessment considers a number of potential housing sites identified by Twyford Parish Council and assesses the extent to which the sites can accommodate housing development in landscape terms. Each site is assessed relative to the other sites included in the study rather than against the most and least sensitive sites within the National Park or nationally.

Part 3: Twyford Settlement Boundary Review aims to assist the Parish in the definition of the settlement boundary (the main built up area of Twyford village). The recommendations have regard to the SDNPA’s Settlement Boundary Review: Methodology Paper (September 2015) .

2. LANDSCAPE SETTING

2.1 Location

The village of Twyford is situated approximately 3.5km to the south of Winchester in the county of Hampshire along the east bank of the River Itchen. Twyford is within the boundaries of Winchester City Council, Hampshire County Council, as well as falling under the jurisdiction of the SDNPA.

The Twyford Parish boundary extends to the edge of Shawford to the west, following a stretch of the Itchen Navigation route and encompassing a large area of the Itchen Valley floor with the south west tip extending down to the settlement edge of Colden Common. Twyford Down to the north falls within the Parish boundary including the M3 Twyford Down cutting. The northern and eastern boundary follows the Morestead Road (the route of the Winchester to Porchester Roman Road) and the southern area of the Parish includes Cockscombe Hill.

2.2 Landscape Designation - South Downs National Park

The entire Parish of Twyford falls within the boundary of the SDNP, situated at the Park's far western edge. The Parish's western and southern boundaries are within 500m of, and in places are contiguous with, the Park's boundary.

Twyford village and its surrounding landscape was proposed to be included within the National Park due to its attractive village core and its surrounding high quality landscape. In the boundary designation report it was noted by the Countryside Agency that:

'Twyford stands at the interface between the Itchen Valley and the chalk Downs. The former contains a network of water meadows and has a strong sense of seclusion and tranquility despite the presence of the nearby M3 motorway. The Itchen itself is one of the country's best examples of a chalk river and is designated as an SSSI and SAC.'

'A comprehensive rights of way network allows easy public access to this area and in turn to the wider downland. A range of water related recreational opportunities area available in the Itchen Valley.'

When reviewing the proposed boundary for the SDNP the inspector noted that the Itchen valley had high intrinsic landscape qualities and has strong historical and visual links to the downland areas to the east. Overall the inspector concluded that the area satisfied the natural beauty criterion and length of the Itchen Valley close to Twyford warranted inclusion.

SDNP Special Qualities are defined as follows:

1. Diverse, inspirational landscapes and breathtaking views;
2. A rich variety of wildlife and habitats including rare and internationally important species;
3. Tranquil and unspoilt places;
4. An environment shaped by centuries of farming and embracing new enterprise;
5. Great opportunities for recreational activities and learning experiences;
6. Well-conserved historical features and a rich cultural heritage;
7. Distinctive towns and villages, and communities with real pride in their area.

It is considered that to a greater or lesser extent the Parish of Twyford demonstrates all of these special qualities within its boundaries.

2.3 Landscape Character Context

The village of Twyford lies along a rural part of the Itchen Valley, on the banks of the River Itchen. It is from this connection that the village's name derives – 'Twyford' meaning 'two fords' which cross the river.

Twyford Parish falls within 3 broad LCAs identified in the SDILCA (and shown on Parish-wide Figure B) which are:

- A5 East Winchester Open Downs

- D1a South Winchester Downland Mosaic
- E4:Itchen Valley

The key characteristics, sensitivities and management considerations of these LCAs – as identified in the SDILCA - are used as a basis for the more detailed Twyford character assessments to follow in section 3 below.

The Twyford study has shown that it is evident that the Parish's varied landscape has evolved over many hundreds of years, formed by the interaction of the natural environment and human activities, in particular the combination of physical, biological and cultural influences. Physical influences such as the underlying chalk geology and landform, together with the overlying pattern of settlement and land use, particularly agricultural, are key influences that have formed the landscape character we see today.

The northern and eastern parts of the Parish comprise the open, rolling, chalk landscape and branching dry valleys of Twyford Down and Hazeley Down, typical of the downland landscape, crossed by the Pilgrims' Trail long distance path. The northern parish boundary skirts the northern base of Twyford Down, adjacent to St Catherine's Hill to the north and abuts the edge of the Morestead Road to the north and east. The south eastern area of the Parish comprises an area of rolling landform of Cockscomb Hill forming part of a localised secondary chalk escarpment of rolling landform dissected by dry valleys running between Twyford and Droxford. It comprises an area of small to medium sized pasture, paddocks and arable fields enclosed by a strong pattern of ancient woodland and thick hedgerows. The western area of the Parish encompasses the Itchen valley and Itchen River and its numerous branching streams and watermeadows and includes the Itchen Way and Monarch's Way long distance paths.

Twyford village itself stands at the interface between the Itchen valley and the chalk downs and this surrounding landscape character is important to its rural setting. The Itchen valley, dry valley bottoms, surrounding valley sides and ridgelines are most visible from the edges of the village. The quality, scenic value and distinctive character of this surrounding landscape plays an important contribution to enhancing the character of the village and is a reminder of the village's strong connection to it, both

past and present. In addition the valley floor and sides provide a setting for historic parks including Shawford Park and on the valley floor and Twyford Moors and Twyford Lodge along the valley side.

2.4 Topography and Hydrology (see Parish-wide Figures A and F)

The topography and hydrology are key characteristics of the village's setting as well as giving rise to a diversity of habitats and key influences to the historic and present day land use and settlement pattern. The village centre and historic core is situated along the lower slopes and bottom of the valley adjacent to the River Itchen. The majority of the village sits below 35m AOD with Twyford School and houses off Bourne Fields Road, Bourne Fields Lane, Northfields, Shipley Road and Newton Road at the north-east end of the village between 35m AOD and 55m AOD. The highest point of the built up area of the village is the Hazeley Enterprise Park at 60m AOD in the north-east corner of the village.

The Itchen valley is part of a wider branching chalk valley system which drains the 'dipslope' of the chalk downs. The porous nature of the chalk results in a landscape with little surface water. The River Itchen is the most dominant river in the Winchester District, as well as the most populated. On the shallow slopes of the valley sides the shallow well drained, calcareous silty soils support intensive arable cultivation. The characteristic clear water of the chalk river is an important resource as well as supporting a range of habitats.

The village is surrounded to the north and east by an irregular amphitheater of rolling downland typically indented by dry valleys which produce smoothly rounded valley sides. To the north and east the land rises to the dramatic open rolling chalk landscape of Twyford and Hazeley Down reaching 125m AOD. To the south the more enclosed rolling downland landscape reaches 110m AOD at Cockscomb Hill. These two areas of downland are divided east west by a dry valley with Hazeley road running along its bottom connecting Morestead to Twyford from which there are open views across the rolling valley sides where the smooth land form can be seen set against the skyline.

The open character of the high ground in the north of the Parish affords expansive panoramic views across to Winchester to the north, the English Channel to the south, along the chalk ridge to the east and views down into the Itchen valley and ridges to the west.

2.5 Vegetation and Ecology (see Parish-wide Figure D)

The river valley supports a mosaic of vegetation and habitats including water meadows, tree belts, hedges and pasture. The watercourse and banks of the Itchen are designated as a SAC and areas of the valley floor and River Itchen are designated as SSSI, SINCS and Local Wildlife Sites. Areas of BAP Priority Habitats: Coastal & Floodplain Grazing Marsh and Lowland meadows are present along the valley floor.

The chalk downland has pockets of species-rich calcareous grassland particularly focused around Twyford Down and Cockscomb Down. Active management through grazing and scrub control helps to conserve this unique, specialised and fragile habitat which results from centuries of grazing on nutrient poor chalks soils, producing a short sward rich in herbs, flowers and grasses. Hedgerows, tree belts as well as areas of woodland, including ancient woodland, are present in the southern area of the Parish. Indigenous beech, oak, ash, field maple and hazel are prevalent over the chalk soils with a concentration of oak trees over the clay soils in the southern area. Areas of BAP Priority Habitats: Lowland Calcareous Grassland, Lowland Meadows and Deciduous Woodland are present in the northern and eastern area of the Parish.

2.6 Historic landscape (see Parish-wide Figure C)

Evidence of human settlement and influence within the Parish dates back to the Iron Age. There are numerous Scheduled Monuments within the area including at Twyford Down which contains significant evidence of a relict ancient landscape of many periods through history and retains a number of important visible earthworks including the ancient field systems of lynchets of late Iron Age or early Romano-British date. The Scheduled Monuments of Twyford Waterworks and Twyford Roman Villa are located to the east of the village. Historic transport links including to Winchester and St. Catherine's Hill fort are evident including the Porchester to

Winchester Roman road and the 'Donga' ancient trackways on the chalk slopes – believed to be the remains of parallel tracks of medieval or even earlier origin representing alternative ways down the hillside.

Other historic features of note include those associated with the presence of the River and the Itchen Navigation. Remnant features relating to water management and agricultural/industrial use of the river, including fragments of water meadows, mills, mill stream channels and sluices are evident.

A large area of Twyford village is designated a conservation area which covers the parts of the village which are considered to make the most contribution to the attractive historic and architectural qualities of Twyford. It contains most of the Parish's listed buildings. Other listed buildings can be found elsewhere in the Parish with a cluster at Hazeley Farm, Twyford Moors and around and including Shawford House. Although there are no Registered Parks and Gardens there are a number of parklands including at Shawford Park. There are also significant remnants of The Bishop of Winchester's (1323) hunting park (evident on the 1st OS historic map) in the south of the Parish.

The field patterns across the parish are largely formed by recent enclosure. The SDILCA describes recent enclosures as '*Field patterns of 18th-19th century date, derived from parliamentary enclosure and large scale private enclosure*' they '*Comprise regular rectilinear fields, usually with straight boundaries, often displaying evidence of professional surveying, and easily differentiated from the surrounding early enclosures*'.

There is an area of early assarted enclosures in the southern area of the Parish and an area of early enclosures immediately to the west of Twyford village. The SDILCA describes early enclosures as '*Field patterns of late medieval and early post-medieval date (14th-17th century), derived from piecemeal private enclosure of earlier open field systems, modification of assarts and early enclosure of sheepwalk and commons.*' They '*comprise small regular fields, often rectilinear, with wavy boundaries and irregular fields with straight boundaries*'.

2.7 Perceptual/Experiential Landscape (see Parish-wide Figure E)

Generally the Parish has an overriding rural character of high scenic value. The open downland to the north has an exposed character, with long distance, panoramic views across the surrounding landscape, contrasting with the sheltered environment of the Itchen valley to the west. Along the valley the rising valley sides, small field sizes, presence of hedgerows with hedgerow trees all contribute to the enclosed character with a strong sense of seclusion and tranquility despite the presence of the nearby M3 motorway. In the southern area the early assarted enclosures, thick hedgerows, tree belts and ancient woodland create a small scale secluded landscape which is the most tranquil area of the Parish.

Overall the tranquility of the Parish is somewhat affected by noise and visual intrusions of the M3, busy B3335 and the Southampton Airport flight path.

The valley roads and a network of public rights of way, including a number of promoted long distance paths, mean the landscape is easily accessible by car and on foot/horseback/bicycle. There are a number of links from Twyford to the valley floor and to the higher surrounding downs with links to Winchester and surrounding villages. The river also provides recreational opportunities. There is an area of open access land at Twyford Down to the north of the M3 and further areas outside but nearby to the Parish at St Catherine's Hill, to the east of St Catherine's Hill and at Shawford Down.

2.8 Settlement Pattern

The area has been continuously settled and farmed since at least the Iron Age, evident from numerous scheduled monuments including Bronze Age barrows, late Iron Age or early Romano-British ancient field systems of lynchets and the Twyford Roman Villa. An Early Saxon Cemetery was discovered at Bourne Lane and excavations in 2008 revealed 13 skeletons.

Twyford is a typical chalk valley side settlement and the river has made a considerable contribution to its economy. Twyford is typical of the

settlement form within the wider Chalk Valley Systems landscape character type described in the SDILCA:

'The settlement pattern of the Chalk Valley Systems is characterised by a string of nucleated settlements of medieval origin often dramatically located along the edge of valley floor with steep slopes rising above the settlement. Villages are frequently surrounded by irregular enclosures of late medieval date. These are linked by a strong linear communication pattern, including major roads and railways. Typically the valley sides support a scatter of farmsteads of largely 18th-19th century date set within regular enclosures of the same date.'

The Twyford Historic Rural Settlements HCC publication 2004 (THRS) gives a good overview of the history of Twyford's settlement pattern and context. This study identifies that there are two components to the settlement linked by the B3335 and the two public rights of way. The older parts of both components are connected to the River Itchen. The northerly component includes the parish church on the east side of the B3335 with most of the settlement buildings (known as Northfields) to the east of the road. The southern area of the village is approximately 200m from the northern area and situated at a cross roads of the B3335 and the minor roads that link to Morestead to the east and Shawford to the west, crossing the river over Norris's Bridge. The Domesday survey records suggest that the 'dichotomous nature' of Twyford settlement dates back prior to 1066 and lists that Twyford had as many as 6 Mills (4 in the northern area and 2 and a manor in the southern area). Together with fishing rights and tolls, these were an important source of income.

The THRS records that prior to the construction of the Turnpike road (the B3335) in the 18th century it is probably that Church Lane was the principle route through the southern settlement area. The study identifies that there is evidence of two fords in both the northern and southern settlement areas. In the northern area: one ford is accessed via Berry lane between the Church and Church Farm and the other at Hockley Farm to the north. In the southern area there are two possible fords at Norris's bridge and Segars Lane. The southern settlement area is described as being an overtly planned medieval settlement.

2.9 Settlement Gaps

Twyford lies close to several other settlements including Shawford, Colden Common and Morstead. The village residents consider that retaining these gaps is crucial to safeguarding the individual character and identity of the settlements particularly where the land at the edge of settlement forms part of its historic/landscape setting and/or includes areas which have cultural importance.

2.10 Setting of Winchester

The valley and surrounding chalk downland are noted as areas of particular value which define the City and its setting and are mentioned as playing a crucial role in the perception of the city. Twyford Down forms part of the high chalk downland which particularly contributes to this setting, containing evidence of early dwellers and historic transport links (Roman road and ancient trackways).

It is noted that the prominent escarpment at Compton Down which terminates at Shawford Down is a significant vantage point for a panoramic view of the city which features the Cathedral, St. Cross and Twyford.

2.11 Important visual landmarks and features

A number of key landscape features and built form within the Parish and in the surrounding area provide visual landmarks. These include historic buildings, built elements and historic monuments within the Parish including the Grade 2* listed church of St Mary and its spire; numerous listed buildings and walls particularly at the village's edge and entrances where the surrounding landscape provides a distinctive landscape setting; Twyford Waterworks Scheduled Monument; the bowl barrows to the east of Twyford Pumping Station and visible features of Schedule Monuments; and ancient trackways set within a distinctive landscape setting. The modern buildings within Hazeley Enterprise Park and the Feed Mill are also prominent features.

The elevation and sculpted form of the downland within the Parish and surrounding area forms a number of distinctive visual landmarks including the rolling and steeply sloping landform of Twyford Down and the adjacent

St Catherine's Hill, dry valleys, the distinctive open combe at Cockscomb Hill and the surrounding wooded ridges and Shawford Down. Distinctive tree clumps on the tops of hills e.g. at St Catherine's Hill, Twyford Down, Deacon Hill and Cheesefoot Head are also distinctive features. The ancient field systems of lynchets at Twyford Down can be appreciated in their wider historic context in views from the west. The Itchen valley floor and river, views across the open downland to large open skies, rolling downland meeting the horizons and visual links between the valley and the downland are also key features.

There are long reaching views to the sea, settlements along the south coast and Isle of Wight from the high ground and to Winchester, including to the cathedral. Twyford village is visible in panoramic views from the west, appearing in views which also contain Winchester Cathedral.

2.12 Key views from wider landscape

Key views to Twyford Parish and village including from Shawford and Shawford Down Open Access area, St Catherine's Hill open access area, long distance views from Cheesefoot Head and numerous roads including the M3, Badger Farm Road, B3335, Morestead Road, Hazeley Road and Shawford Road. The Parish is visible in panoramic views from the west, including Hockley Viaduct Way and Cycle Route where the area is visible in panoramic views which include views to Winchester Cathedral. The Parish is also visible from numerous well used public rights of way surrounding and within the area including Itchen Way, Pilgrims' Trail and Monarch Way long distance paths.

3. TWYFORD PARISH LANDSCAPE CHARACTER AREAS

In order to provide a more detailed assessment of the Parish's landscape, the area has been sub-divided into smaller LCAs based on the SDILCA areas and called Twyford Landscape Character Areas (TLCAs) A to G, as indicated on Figure 1. Each of these is assessed below, drawing upon relevant key characteristics, sensitivities and management considerations identified in the SDILCA and adding a new level of detail appropriate to the unique setting within Twyford Parish.

Twyford Parish Landscape Assessment - Part 1: Landscape Character Assessment

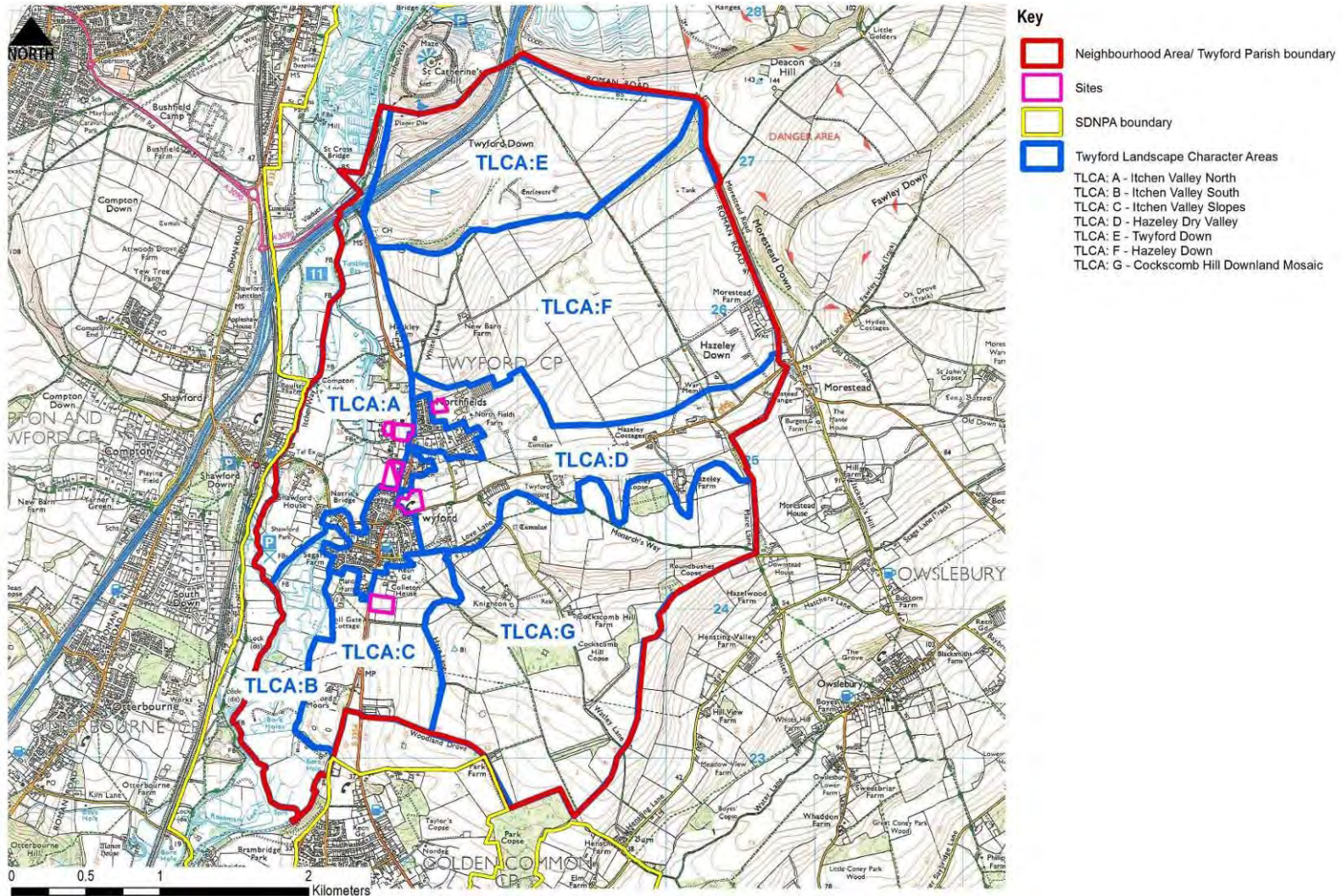


Figure 1. Overall Map of Twyford Landscape Character Areas

3.1 Twyford Landscape Character Area A – Itchen Valley North

Character area map:

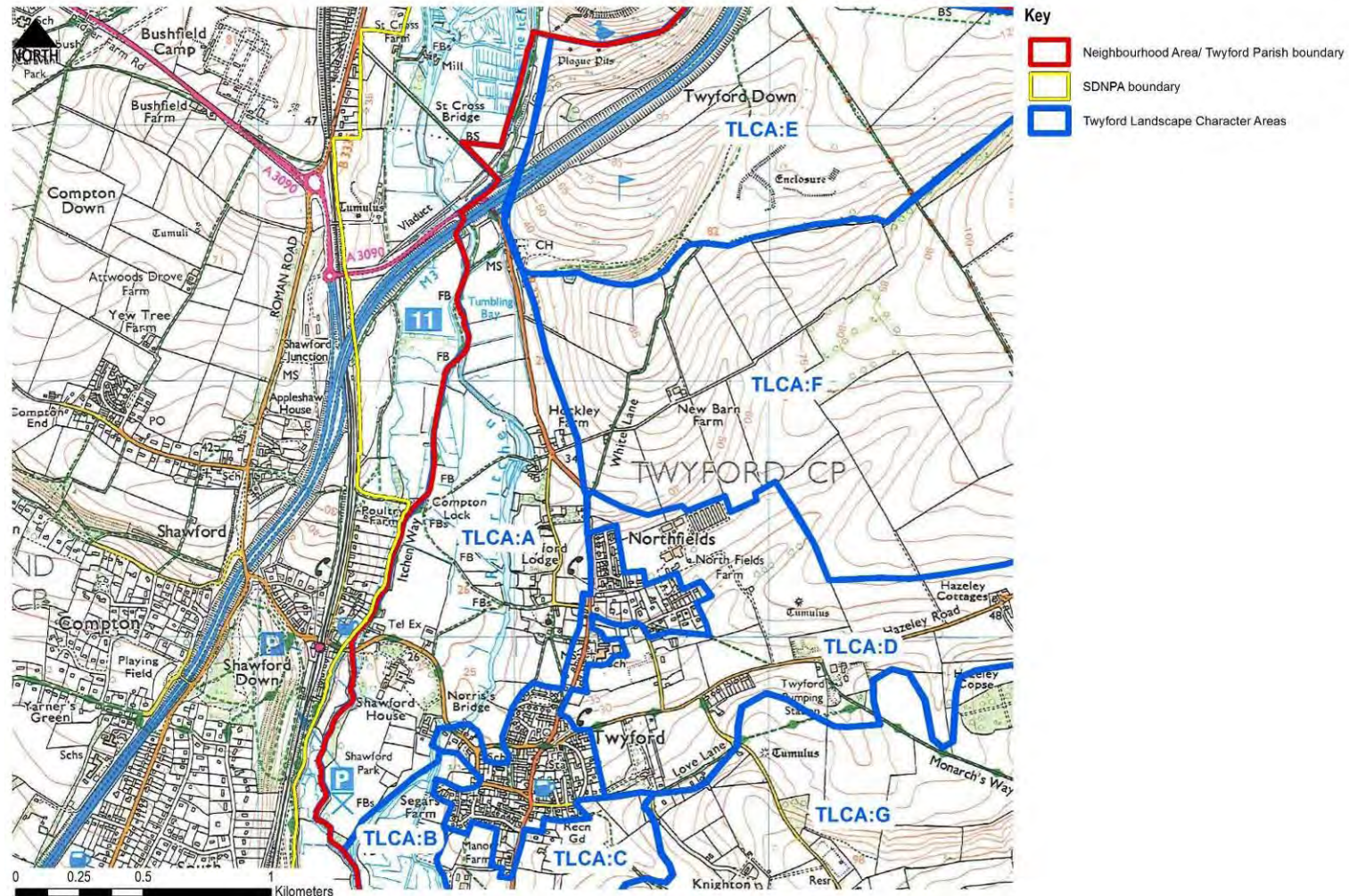


Figure 2. Landscape Character Area A – Itchen Valley North

3.1.1 Landscape Character Area Description

Twyford Landscape Character Area A falls within the South Downs Integrated Landscape Assessment (SDILCA) Character Area E4: Itchen Valley.

This character area comprises an area of relatively wide and flat valley floor containing the River Itchen chalk river with areas of pasture, paddocks and water meadows. The western boundary of the area follows part of the western section of the Twyford Parish boundary and the Itchen Way long distance path. The area is crossed by a number of public rights of way which provide important recreational links from the village to the valley floor. The eastern side of the character area contains the B3335, a busy feeder road passing through Twyford linking the settlements along the valley to Winchester and the M3. To the east is situated the Grade 2* listed church of St Mary and a dispersed area of settlement including numerous other listed buildings accessed from Church and Berry Lane including Twyford Lodge (grade2*), Mildmay House (Grade 2*) and Hockley Mill (Grade 2) all falling within the Twyford Conservation Area and reasonably enclosed by tree belts and hedges. The modern area of housing along Churchfields Road which lies adjacent to the south-east has an abrupt interface with the area. The Shawford Road defines the area's southern boundary crossing the river at the listed Norris Bridge (Grade 2) and a further cluster of listed buildings. A number of pedestrian bridges cross the river providing direct public access from the village to the river valley bottom and the Itchen Way. Shawford House Grade 2* listed building (1685) set within designed parkland and formal gardens lies to the south of Shawford Road, well contained by trees within its boundaries.

3.1.2 Relevant Integrated Key Characteristics from SDILCA LCA E4:

- *Broad, branching valley carved from the chalk downs and indented by dry valleys and coombes to produce smoothly rounded valley sides.*
- *The character area flows through and provides a landscape setting for Winchester. Shallow well drained, calcareous silty soils support intensive arable cultivation on shallow slopes of the valley sides. Pasture and paddocks occur on the valley floor.*
- *Springs, including the main source of the Itchen, south of Cheriton, are located on the chalk.*
- *The clear, chalk river flows in a relatively narrow floodplain in the upper reaches with a wider floodplain south of Winchester. Pasture and paddocks occur on the valley floor*
- *The watercourse and banks of the Itchen are designated as a SAC incorporating a diversity of habitats including the clear alkaline river, fen/marsh/swamp, neutral grassland and pockets of woodland.*
- *Historic features associated with the presence of the River and the Itchen Navigation are apparent today. Remnant features relating to water management and agricultural/industrial use of the river, including fragments of watermeadows, weirs and mill ponds, fish farms, trout lakes, and watercress beds.*
- *Extensive blocks of early enclosure survive throughout the valley. Downstream of Itchen Abbas the landscape is of recent enclosure, comprising regular field systems with very little woodland.*
- *Crossed by the M3 and A roads which interrupt the otherwise tranquil landscape. A sequence of settlements occur along the lower valley sides.*
- *Frequent minor river crossing points are marked by white bridges.*
- *One of the most renowned fly fishing rivers in the world with populations of wild brown and rainbow trout.*

3.1.3 Key Landscape Characteristics and Sensitivities specific to Twyford Landscape Character Area A

Natural

- The River Itchen: a clear, chalk river flowing through a relatively flat and wide valley with associated water meadows.
- Pasture and paddock fields occur along the valley floor and sloping valley sides.
- Tree belts and hedges provide some enclosure along the valley bottom and adjacent to the settlement edge particularly around Berry Lane and Church Lane.
- Small gently sloping paddocks and pasture fields reach into the settlement, many partly defined by brick or flint wall boundaries, contribute to the village's rural setting
- Mature field and boundary trees often in grounds of large houses.
- Areas of BAP Priority Habitats: Coastal & Floodplain Grazing Marsh and Lowland meadows present.
- Areas of the valley floor and River Itchen are designated as SSSI, SINCS, SAC, Local Wildlife Sites.
- Valley floor falls within Flood Zone 3

Cultural

- The surrounding natural environment, particularly the river and valley floor landscape, provides an important setting to numerous listed buildings and the conservation area, including the Grade 2* listed church of St Mary.
- The listed brick and cast iron Norris's Bridge (dated 1897) is a distinctive historic feature associated with the river. To the north of the bridge what is thought to be one of original fords of Twyford, the other being at the west end of Berry lane near the church.
- Fragments of water meadows, Hockley Mill, mill stream channel and sluices indicate the former agricultural use of the river.
- Historic ford and bridging points (at Norris' bridge, Segars Lane (within TLCA B), Berry Lane between the church and Church Farm and at Hockley Farm).
- Field patterns formed by early enclosure (late medieval and early post-medieval) between Finch's Lane and Berry Lane and recent enclosure (18th-19th century) around Church Lane.
- Designed parkland and formal gardens around Shawford House Grade 2* listed building (1685).
- Area of pre-1800 settlement focused along Shawford Road and around Church Lane.
- Parkland features including walls, gateways and parkland trees
- Narrow lanes often enclosed by walls and hedges and sometimes sunken
- Twyford has a varied historic settlement pattern with a historic distinction between the northern and southern settlement areas. This character area includes the historic core of the northern area around the church which retains a dispersed pattern consisting of mainly large houses in spacious grounds interwoven with small pasture fields.
- Trees, hedgerows and walls within private gardens play an important contribution to landscape character.
- A section of the Itchen Navigation and Itchen Navigation Trail runs along the areas western boundary
- The valley bottom has many historical links to the downland areas to the east
- Numerous public rights of way cross the area. Pedestrian bridges over the river provide direct public access from the village to river valley bottom. The rights of way provide links the Itchen Way recreational path and to water related recreational opportunities.

Twyford Parish Landscape Assessment - Part 1: Landscape Character Assessment

- Parks and gardens listed in the Hampshire Register of Historic Parks and Gardens: Shawford House, Twyford (site 1509) Pre 1810 Park; Twyford Lodge, Twyford (site 1582) Pre 1810 Park; Mildmay House, Twyford (site 1580); Twyford House, Twyford (site 1586).

Perceptual

- The area has an overriding rural character
- The network of water meadows and has a strong sense of seclusion and tranquility despite the presence of the nearby M3 motorway with enclosure provided by river side vegetation and vegetation along the settlement edge.
- Tranquility is somewhat affected by noise and visual intrusions of the M3, B3335 and the flight path.
- The fine grain of the landscape pattern is sensitive to change.

3.1.4 Key Visual Sensitivities specific to Twyford Landscape Character Area A

Key views into the area are afforded from:

- Numerous well used Public Rights of Way linking the village to the valley floor including the Itchen Way and Monarch Way long distance paths
- Public Rights of Way along high ground to the east and north-east including Shawford Down open access land and the Hockley Viaduct Way and Cycle Route where the area is visible in panoramic views which include views to Winchester Cathedral.
- Public Rights of Way along high ground to the north and north east with glimpsed views of the area's northern end from St. Catherine's Hill and Hockley Golf Course on Twyford Down.
- B3335 and Shawford Road
- Private houses

Key views out of the area to:

- The distinctive tree clumps on Twyford Down and St Catherine's Hill, providing visual links between the valley and the downland to the north-east.
- Shawford Down and war memorial

Key views within the area:

- Grade 2* listed church of St Mary is a distinctive landmark feature within the area.
- To listed buildings where the surrounding landscape provides a distinctive landscape setting

3.1.5 Relationship to Settlement

- The southern area contains part of the more dispersed historic core of the settlement with a generally strong vegetated edge with the countryside with the northern area more removed from the settlement.
- The area plays an important contribution to the narrow gap which separates Twyford and Shawford.
- The modern area of housing along Churchfields Road lies adjacent to the south-east has an abrupt interface with the area.

3.1.6 Summary (including extent to which TLCA:A is representative of the wider LCA)

The area demonstrates many key natural, cultural and perceptual characteristics of the wider LCA with numerous ecological and historical designations as well as the National Park designation. The area provides an important landscape setting to the riverside village of Twyford as well as playing an important contribution to the narrow gap which separates Twyford and Shawford.

3.1.7 South Downs National Park Special Qualities

TLCA:A demonstrates elements from the following SDNPA Special Qualities:

SDNPA Special Qualities	Examples of how TLCA:A demonstrates special qualities
1. Diverse, inspirational landscapes and breathtaking views;	<ul style="list-style-type: none"> Itchen valley contributes to the diversity of the surrounding landscape character
2. A rich variety of wildlife and habitats including rare and internationally important species;	<ul style="list-style-type: none"> Areas of the valley floor and River Itchen are designated as SSSI, SINC, SAC, Local Wildlife Sites
3. Tranquil and unspoilt places;	<ul style="list-style-type: none"> The network of watermeadows and has a strong sense of seclusion and tranquility
4. An environment shaped by centuries of farming and embracing new enterprise;	<ul style="list-style-type: none"> Centuries of agricultural management of the river and valley bottom have occurred
5. Great opportunities for recreational activities and learning experiences;	<ul style="list-style-type: none"> Numerous public rights of way cross the area. Pedestrian bridges over the river provide direct public access from the village to river valley bottom. The rights of way provide links the Itchen Way recreational path. The river provides water related recreational opportunities.
6. Well-conserved historical features and a rich cultural heritage;	<ul style="list-style-type: none"> Numerous listed buildings, historical features associated with the river and Twyford Conservation Area
7. Distinctive towns and villages, and communities with real pride in their area.	<ul style="list-style-type: none"> Area contributes to the setting of Twyford Village.

3.1.8 Relevant Land Management / Development Considerations from SDLICA

- *Conserve field and parkland boundaries.*
- *Restore, and improve access to, the Itchen Navigation and its banks.*
- *Conserve the distinctive white bridges which provide river crossing points.*
- *Ensure that any future traffic regulation and road upgrades associated with the M3, A34 and A31 are integrated into the rural valley landscape and ensure any signage is sensitively detailed.*
- *Maintain the nucleated form of villages and avoid extending linear development along roads. Minimise light spill from settlements.*
- *Pay particular attention to the varied nature of views throughout the area and in particular the panoramic views from St Catherine's Hill (in adjacent character area) in relation change within the Itchen Valley.*

- *Seek to limit further encroachment of suburban influences (such as fencing) around village properties and conserve areas of flint walling which are particularly distinctive features of a number of settlements.*
- *Seek to minimise extraction of sand and gravel within the Itchen Valley and ensure sensitive restoration of on-going schemes.*

3.1.9 Land Management / Development Considerations specific to Twyford Landscape Character Area A

- Conserve field and parkland boundaries and features including hedges, trees and distinctive flint and brick walls. Seek to limit further encroachment of suburban influences (such as fencing) around village properties.
- Conserve distinctive small gently sloping paddocks and pasture fields which reach into the settlement
- Explore opportunities for the provision of community open space taking advantage of the high amenity value of views into the river valley and to the Church.
- Restore, and improve access to, the Itchen Navigation and its banks.
- Consider incorporating clumps of trees and hedges to soften the abrupt modern edge of the village.
- Conserve the distinctive bridges which provide river crossing points and access from the village to the valley floor.
- Ensure that any future road upgrades associated with the M3 and B3335 are integrated into the rural valley landscape and ensure any signage, kerbs and lighting are sensitively detailed.
- Conserve the character of rural lanes
- Avoid extending linear development along roads and minimise light spill.
- Consider the varied nature of views throughout the area and panoramic views from the surrounding high ground, particularly from Shawford Down, in relation to change within the area.
- Conserve historic features associated with the presence of the River and the Itchen Navigation
- Conserve views to the Church which is a distinctive landmark
- Conserve the dispersed character of the northern historic core around the church and consider the historic distinction of the northern and southern settlement areas of Twyford.
- Consider the contribution of the landscape character to the setting of heritage assets
- Encourage management of the traditional water meadows along the River Itchen

TLCA:A Photographs



Photo 1. Bridge over River Itchen



Photo 2. Views to the settlement across water meadows



Photo 1. Grade 2 listed Hockley Mill on the River Itchen



Photo 3. Pasture fields provide an important setting to Twyford village

3.2 Landscape Character Area B – Itchen Valley South

Character area map:

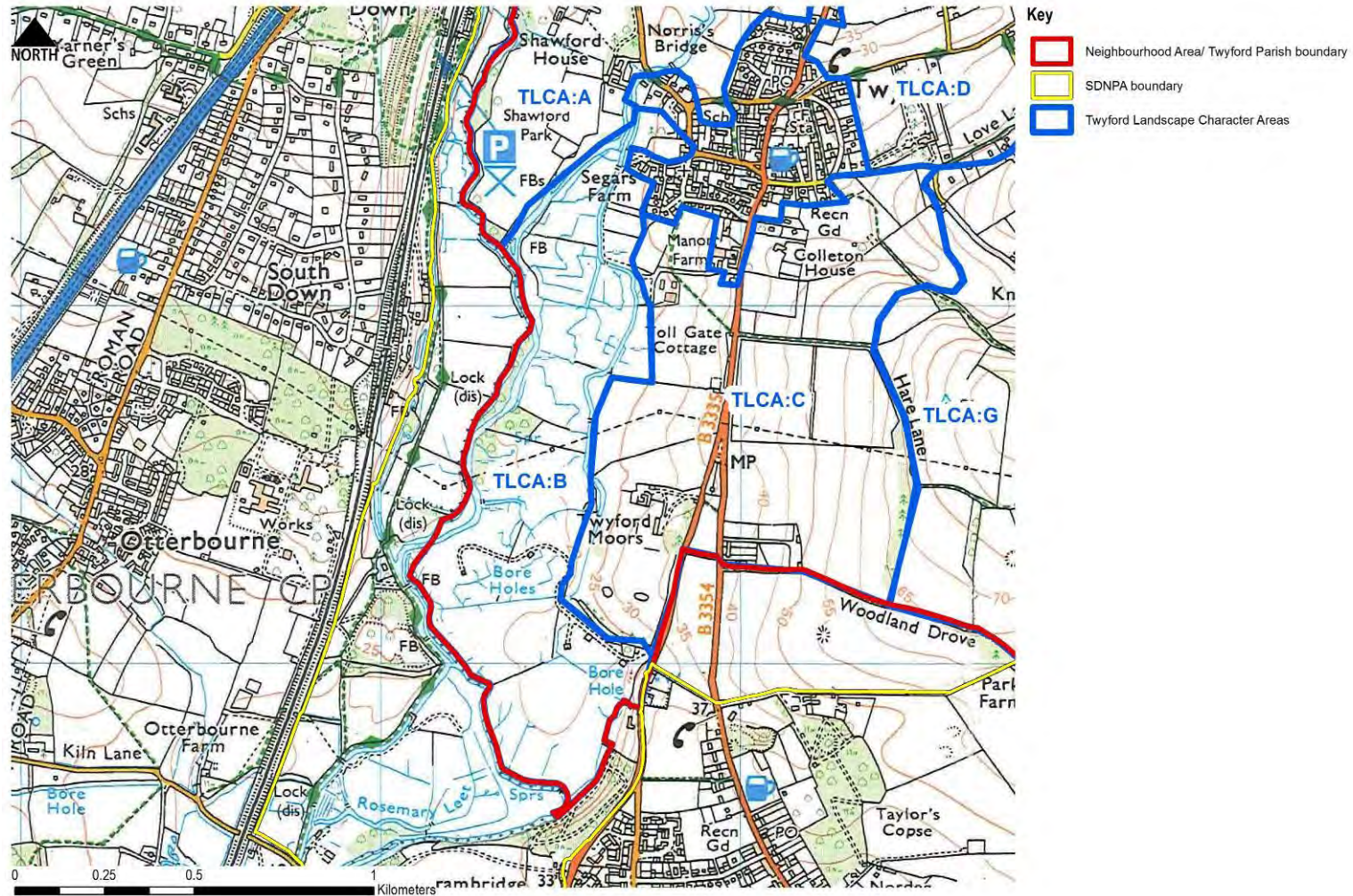


Figure 3. Landscape Character Area B – Itchen Valley South

3.2.1 Landscape Character Area Description

Twyford Landscape Character Area B falls within the South Downs Integrated Landscape Assessment (SDILCA) Character Area E4: Itchen Valley.

This area comprises an area of relatively wide and flat valley floor containing the River Itchen chalk river with areas water meadow, pasture and paddocks. The western boundary of the area follows part of the western section of the Twyford Parish boundary and the Itchen Way long distance path. No public rights of way cross the character area but the area is visible from nearby public rights of way particularly from the east and west, including the Itchen Way. A number of pedestrian bridges cross the river, although these are not publically accessible. The northern area abuts the south-east side of Twyford's settlement edge and the edge of the Shawford House parkland. The northern tip of the area falls within the Twyford Conservation Area and several Listed Buildings fall within the area and immediately adjacent. Power lines cross the middle of the area.

Relevant Integrated Key Characteristics from SDLCA LCA E4:

- *Broad, branching valley carved from the chalk downs and indented by dry valleys and coombes to produce smoothly rounded valley sides.*
- *The character area flows through and provides a landscape setting for Winchester. Shallow well drained, calcareous silty soils support intensive arable cultivation on shallow slopes of the valley sides. Pasture and paddocks occur on the valley floor.*
- *Springs, including the main source of the Itchen, south of Cheriton, are located on the chalk.*
- *The clear, chalk river flows in a relatively narrow floodplain in the upper reaches with a wider floodplain south of Winchester. Pasture and paddocks occur on the valley floor*
- *The watercourse and banks of the Itchen are designated as a SAC incorporating a diversity of habitats including the clear alkaline river, fen/marsh/swamp, neutral grassland and pockets of woodland.*
- *Historic features associated with the presence of the River and the Itchen Navigation are apparent today. Remnant features relating to water management and agricultural/industrial use of the river, including fragments of watermeadows, weirs and mill ponds, fish farms, trout lakes, and watercress beds.*
- *Extensive blocks of early enclosure survive throughout the valley. Downstream of Itchen Abbas the landscape is of recent enclosure, comprising regular field systems with very little woodland.*
- *Crossed by the M3 and A roads which interrupt the otherwise tranquil landscape. A sequence of settlements occur along the lower valley sides.*
- *Frequent minor river crossing points are marked by white bridges.*
- *One of the most renowned fly fishing rivers in the world with populations of wild brown and rainbow trout.*

3.2.2 Key Landscape Characteristics and Sensitivities specific to Twyford Landscape Character Area B

Natural

- The River Itchen: a clear, chalk river flowing through a relatively flat and wide valley with associated water meadows.
- Pasture and paddock fields occur along the valley floor and sloping valley sides.
- Tree belts and hedges provide some enclosure along the valley bottom and adjacent to the settlement edge.
- Valley floor character contributes to the village's rural setting

Twyford Parish Landscape Assessment - Part 1: Landscape Character Assessment

- Mature field and boundary trees often in grounds of large houses.
- Areas of BAP Priority Habitats: Coastal & Floodplain Grazing Marsh present.
- Areas of the valley floor and River Itchen are designated as SSSI and SAC.
- Valley floor falls within Flood Zone 3

Cultural

- The surrounding natural environment, particularly the river and valley floor landscape, provides an important setting to numerous listed buildings and the conservation area.
- Fragments of water meadows indicate the former agricultural use of the river.
- Historic ford and bridging point at Segars Lane
- Trees, hedgerows within private gardens play an important contribution to landscape character.
- A section of the Itchen Navigation and Itchen Navigation Trail runs close by to the area's western boundary
- The valley bottom has many historical links to the downland areas to the east

Perceptual

- The area has an overriding rural character accentuated by the lack of development within and public access to the area
- The network of watermeadows and has a strong sense of seclusion and tranquility despite the presence of the nearby M3 motorway with enclosure provided by river side vegetation and vegetation along the settlement edge.
- Tranquility is somewhat affected by noise and visual intrusions of the M3, B3335 and the flight path.

3.2.3 Key Visual Sensitivities specific to Twyford Landscape Character Area B

Key views into the area are afforded from:

- From the Itchen Way and Monarch Way long distance paths
- Shawford Down open access land and Shawford village
- Public rights of way adjacent to the east
- B3335 and Shawford Road
- Private houses

Key views out of the area to:

- No publicly accessible views identified

Key views within the area:

- No publicly accessible views identified

3.2.4 Relationship to Settlement

- The northern area abuts the edge of Twyford's southern settlement area with a generally strong vegetated edge adjacent to the countryside with the southern area more removed from the settlement. The northern tip of the area falls within the conservation area containing areas of garden land/grounds of large properties.
- The area plays an important contribution to the undeveloped gap which separates Twyford and Shawford to the west and Colden Common to the south

3.2.5 Summary (including extent to which TLCA:B is representative of the wider LCA)

The area demonstrates many key natural, cultural and perceptual characteristics of the wider LCA with a number of ecological designations and historical designations within and immediately adjacent as well as the National Park designation. The area contributes to the important landscape setting to the riverside village of Twyford as well as playing an important contribution to the undeveloped gap which separates Twyford and Colden Common and Shawford.

3.2.6 South Downs National Park Special Qualities

TLCA:B demonstrates elements from the following SDNPA Special Qualities:

SDNPA Special Qualities	Examples of how TLCA:B demonstrates special qualities
1. Diverse, inspirational landscapes and breathtaking views;	<ul style="list-style-type: none"> • Itchen Valley contributes to the diversity of the surrounding landscape character
2. A rich variety of wildlife and habitats including rare and internationally important species;	<ul style="list-style-type: none"> • Areas of the valley floor and River Itchen are designated as SAC and SSSI
3. Tranquil and unspoilt places;	<ul style="list-style-type: none"> • The network of watermeadows has a strong sense of seclusion and tranquility
4. An environment shaped by centuries of farming and embracing new enterprise;	<ul style="list-style-type: none"> • Centuries of agricultural management of the river and valley bottom have occurred
5. Great opportunities for recreational activities and learning experiences;	<ul style="list-style-type: none"> • The river provides water related recreational opportunities, though access is limited
6. Well-conserved historical features and a rich cultural heritage;	<ul style="list-style-type: none"> • Historical features associated with the river and Twyford Conservation Area. The surrounding natural environment, particularly the river and valley floor landscape, provides an important setting to numerous listed buildings and the conservation area.
7. Distinctive towns and villages, and communities with real pride in their area.	<ul style="list-style-type: none"> • Area contributes to the setting of Twyford Village.

3.2.7 Relevant Land Management / Development Considerations from SDLICA

- *Conserve field and parkland boundaries.*
- *Restore, and improve access to, the Itchen Navigation and its banks.*
- *Conserve the distinctive white bridges which provide river crossing points.*
- *Ensure that any future traffic regulation and road upgrades associated with the M3, A34 and A31 are integrated into the rural valley landscape and ensure any signage is sensitively detailed.*
- *Maintain the nucleated form of villages and avoid extending linear development along roads. Minimise light spill from settlements.*
- *Pay particular attention to the varied nature of views throughout the area and in particular the panoramic views from St Catherine's Hill (in adjacent character area) in relation change within the Itchen Valley.*
- *Seek to limit further encroachment of suburban influences (such as fencing) around village properties and conserve areas of flint walling which are particularly distinctive features of a number of settlements.*
- *Seek to minimise extraction of sand and gravel within the Itchen Valley and ensure sensitive restoration of on-going schemes.*

3.2.8 Land Management / Development Considerations specific to Twyford Landscape Character Area B

- Conserve field and parkland boundaries and features including hedges, trees and distinctive flint and brick walls. Seek to limit further encroachment of suburban influences (such as fencing) around village properties.
- Conserve distinctive small gently sloping paddocks and pasture fields adjacent to the settlement edge.
- Restore, and improve access to, the Itchen Navigation and its banks.
- Seek to improve the integration of the sewage works and associated infrastructure.
- Conserve the distinctive bridges which provide river crossing points
- Seek to increase public access from the village to the valley floor.
- Avoid extending linear development along roads near to this area and minimise light spill.
- Consider the varied nature of views throughout the area and panoramic views from the surrounding high ground, particularly from Shawford Down, in relation change within the area.
- Conserve historic features associated with the presence of the River and the Itchen Navigation nearby
- Conserve the dispersed character of the historic settlement core particularly around the river edge and protect views out of the settlement edge into this area
- Consider the contribution of the landscape character to the setting of heritage assets
- Encourage management of the traditional water meadows along the River Itchen

TLCA:B Photographs



Photo 1. View across pasture to housing along high ground at Shawford



Photo 2. Sewage works within valley floor

3.3 Landscape Character Area C – Itchen Valley Slopes

Character area map:

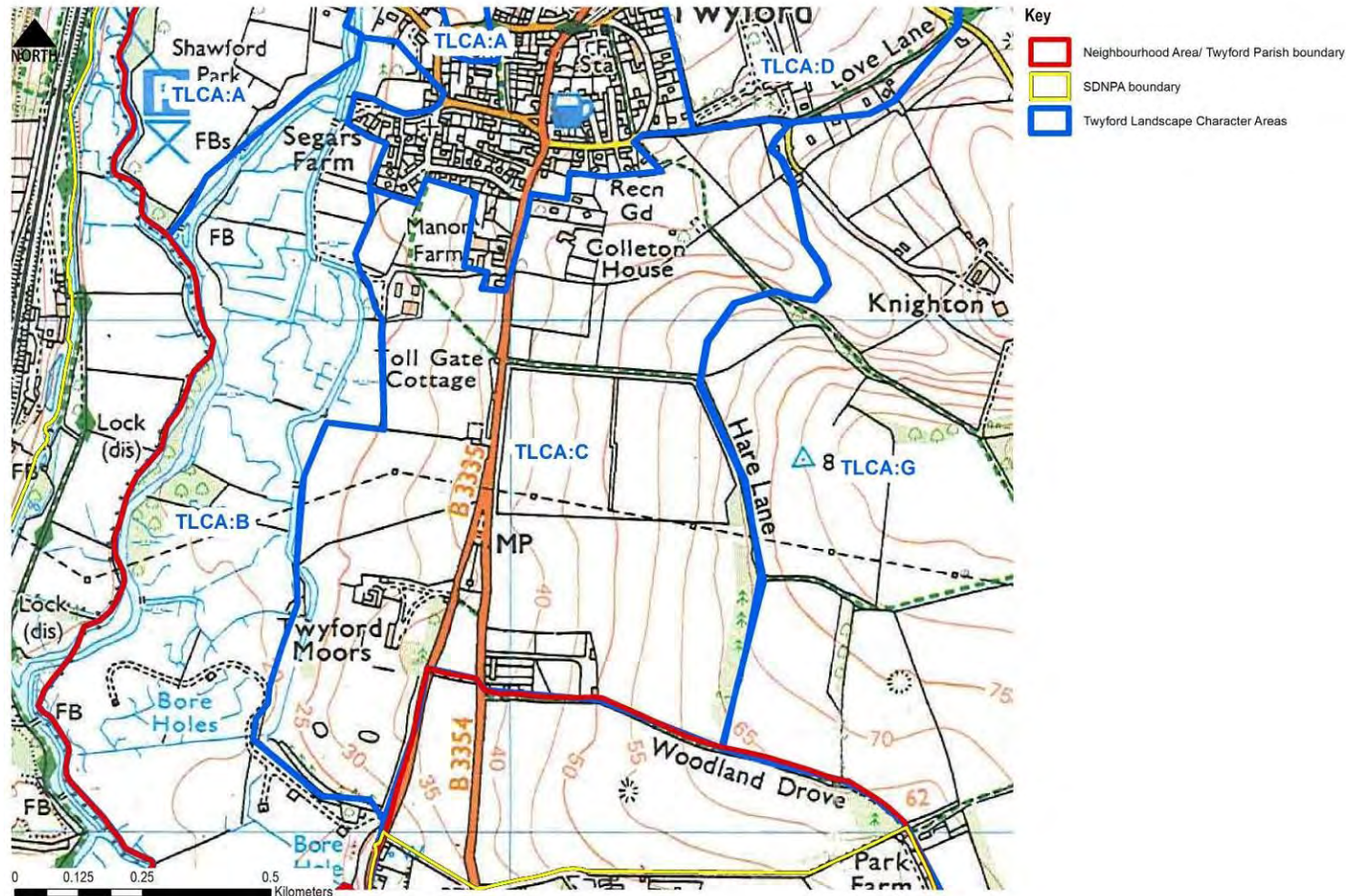


Figure 4. Landscape Character Area C – Itchen Valley Slopes

3.3.1 Landscape Character Area Description

Twyford Landscape Character Area C falls within the South Downs Integrated Landscape Assessment (SDILCA) Character Area E4: Itchen Valley.

This character area comprises an area of sloping medium sized pasture and arable fields along the lower slopes of the Itchen Valley divided by hedgerows and tree belts with riverside vegetation to the west. The area is situated immediately to the south of Twyford village with the eastern boundary following the edge of the valley floor. The area forms part of the transition between the secluded valley floor and the rolling downland mosaic which lies to the east. The area includes the Twyford recreation area and allotments in the north-west. The area is crossed north to south by the B3335 with the B3354 branching off and running parallel. A number of public rights of way cross the area providing access from the village to the downland to the south and east. A limited amount of scattered built form which includes isolated farms, large houses set in large plots/parkland falls within the area. A number of these buildings are listed including Twyford Moors country house (Grade 2*) and The Manor House (grade 2) on the edge of Twyford. Power lines cross the middle of the area.

3.3.2 Relevant Integrated Key Characteristics from SDILCA LCA E4:

- *Broad, branching valley carved from the chalk downs and indented by dry valleys and coombes to produce smoothly rounded valley sides.*
- *The character area flows through and provides a landscape setting for Winchester. Shallow well drained, calcareous silty soils support intensive arable cultivation on shallow slopes of the valley sides. Pasture and paddocks occur on the valley floor.*
- *The watercourse and banks of the Itchen are designated as a SAC incorporating a diversity of habitats including the clear alkaline river, fen/marsh/swamp, neutral grassland and pockets of woodland.*
- *Historic features associated with the presence of the River and the Itchen Navigation are apparent today. Remnant features relating to water management and agricultural/industrial use of the river, including fragments of watermeadows, weirs and mill ponds [...].*
- *Extensive blocks of early enclosure survive throughout the valley. Downstream of Itchen Abbas the landscape is of recent enclosure, comprising regular field systems with very little woodland.*
- *Crossed by the M3 and A roads which interrupt the otherwise tranquil landscape. A sequence of settlements occur along the lower valley sides.*
- *Frequent minor river crossing points are marked by white bridges.*
- *One of the most renowned fly fishing rivers in the world with populations of wild brown and rainbow trout.*

3.3.3 Key Landscape Characteristics and Sensitivities specific to Twyford Landscape Character Area C

Natural

- The River Itchen: a clear, chalk river flowing through a relatively flat and wide valley with associated water meadows.
- Pasture, paddock and arable fields occur along the sloping valley sides.
- Tree belts and hedges provide some enclosure along the valley sides and adjacent to the settlement edge and around farm buildings
- Mature field and boundary trees often in grounds of large houses.
- Areas of BAP Priority Habitats immediately adjacent: Coastal & Floodplain Grazing Marsh
- Areas of the valley floor and River Itchen immediately adjacent to the character area are designated as SSSI and SAC Sites. SINC at B3354/B335 Main Road junction.

Twyford Parish Landscape Assessment - Part 1: Landscape Character Assessment

- Valley floor immediately adjacent falls within Flood Zone 3

Cultural

- The surrounding natural environment, particularly the river and valley floor landscape, provides an important setting to numerous listed buildings and the conservation area to the north.
- Designed parkland and formal gardens around Twyford Moors Grade 2* listed building.
- Parkland features including walls, gateways and parkland trees
- Field patterns formed by recent enclosure (18th-19th century).
- Trees, hedgerows within private gardens play an important contribution to landscape character.
- The valley bottom has many historical links to the downland areas to the east
- A number of well used public rights of way cross the area providing access from the village to the downland to the south and east.
- Parks and gardens listed in the Hampshire Register of Historic Parks and Gardens: Twyford Moors, Twyford (site 1585) Post 1810 Park

Perceptual

- The area has an overriding rural character, containing sparsely scattered settlement
- In the western area the adjacent water meadows have a strong sense of seclusion and tranquility with enclosure provided by boundary and river side vegetation and vegetation along the settlement edge.
- Tranquility is somewhat affected by noise and visual intrusions of the M3, B3335 and the flight path.

3.3.4 Key Visual Sensitivities specific to Twyford Landscape Character Area C

Key views into the area are afforded from:

- A number of well used public rights of way cross the area providing access from the village to the downland to the south and east.
- B3335 and B3354
- Shawford and Shawford Down Open Access area
- Private houses

Key views out of the area to:

- Wooded ridge at Shawford and Shawford Down
- Itchen valley floor
- From the Twyford Recreation Ground to downland to the south and east

Key views within the area:

- To listed walls and buildings from B3335 at the entrance to the village from the south

3.3.5 Relationship to Settlement

- The northern area contains some dispersed built form close to the settlement edge with a generally strong vegetated edge adjacent to the countryside with the southern area more removed from the settlement.
- The area plays an important contribution to the rural approach to the village and the undeveloped gap which separates Twyford and Colden Common.
- The modern area of housing along Manor Road adjacent to the north has an abrupt interface with the area.

3.3.6 Summary (including extent to which TLCA:C is representative of the wider LCA)

The area demonstrates many key natural, cultural and perceptual characteristics of the wider Landscape Character Area with a number of historical designations and ecological designations immediately adjacent as well as the National Park designation. The area contributes to the important landscape setting of the riverside village of Twyford as well as playing an important contribution to the undeveloped gap which separates Twyford and Colden Common.

3.3.7 South Downs National Park Special Qualities

TLCA:C demonstrates elements from the following SDNPA Special Qualities:

SDNPA Special Qualities	Examples of how TLCA:C demonstrates special qualities
1. Diverse, inspirational landscapes and breathtaking views;	<ul style="list-style-type: none"> • Itchen Valley contributes to the diversity of the surrounding landscape character
2. A rich variety of wildlife and habitats including rare and internationally important species;	<ul style="list-style-type: none"> • Areas of the valley floor and River Itchen immediately adjacent to the character area are designated as SSSI and SAC Sites. SINC at B3354/B335 Main Road junction.
3. Tranquil and unspoilt places;	<ul style="list-style-type: none"> • The network of watermeadows and has a strong sense of seclusion and tranquility
4. An environment shaped by centuries of farming and embracing new enterprise;	<ul style="list-style-type: none"> • Pasture, paddock and arable fields occur along the sloping valley sides. Field patterns formed by recent enclosure (18th-19th century).
5. Great opportunities for recreational activities and learning experiences;	<ul style="list-style-type: none"> • A number of well used public rights of way cross the area providing access from the village to the downland to the south and east. The adjacent river provides water related recreational opportunities.
6. Well-conserved historical features and a rich cultural heritage;	<ul style="list-style-type: none"> • The surrounding natural environment, particularly the river and valley floor landscape, provides an important setting to numerous listed buildings and the conservation area to the north. Designed parkland and formal gardens around Twyford Moors Grade 2* listed building. Parkland features occur including walls, gateways and parkland trees.
7. Distinctive towns and villages, and communities with real pride in their area.	<ul style="list-style-type: none"> • Area contributes to the setting of Twyford Village

3.3.8 Relevant Land Management / Development Considerations from SDLICA

- *Conserve field and parkland boundaries.*
- *Restore, and improve access to, the Itchen Navigation and its banks.*
- *Conserve the distinctive white bridges which provide river crossing points.*
- *Maintain the nucleated form of villages and avoid extending linear development along roads. Minimise light spill from settlements.*
- *Pay particular attention to the varied nature of views throughout the area and in particular the panoramic views from St Catherine's Hill (in adjacent character area) in relation change within the Itchen Valley.*
- *Seek to limit further encroachment of suburban influences (such as fencing) around village properties and conserve areas of flint walling which are particularly distinctive features of a number of settlements.*
- *Seek to minimise extraction of sand and gravel within the Itchen Valley and ensure sensitive restoration of on-going schemes.*

3.3.9 Land Management / Development Considerations specific to Twyford Landscape Character Area C

- Conserve field and parkland boundaries and features including hedges, trees and distinctive flint and brick walls. Seek to limit further encroachment of suburban influences (such as fencing) around village properties.
- Conserve distinctive small gently sloping paddocks and pasture fields which reach into the settlement
- Explore opportunities to increase public access to the valley floor linking to the Itchen Navigation.
- Consider incorporating clumps of trees and hedges to soften abrupt modern edges of the village.
- Ensure that any future road upgrades associated with the B3335 are integrated into the rural valley landscape and ensure any signage, kerbs, new/upgraded entrances and lighting are sensitively detailed.
- Conserve the character of rural lanes and tracks, including the rural approaches to the village
- Avoid extending linear development along roads and minimise light spill.
- Considered the varied nature of views throughout the area and panoramic views from the surrounding high ground, particularly from Shawford Down, in relation change within the area.
- Conserve historic features associated with the presence of the River
- Conserve the dispersed character of the settlement village edge and the character and integrity of historic farmsteads
- Consider the contribution of the landscape character to the setting of heritage assets

TLCA:C Photographs



Photo 1. Sloping pasture field at village edge



Photo 2. View into area from Shawford Down open access area



Photo 3. Mature trees in the recreation ground



Photo 4. View from recreation ground to Shawford Down

3.4 Landscape Character Area D – Hazeley Dry Valley

Character area map:

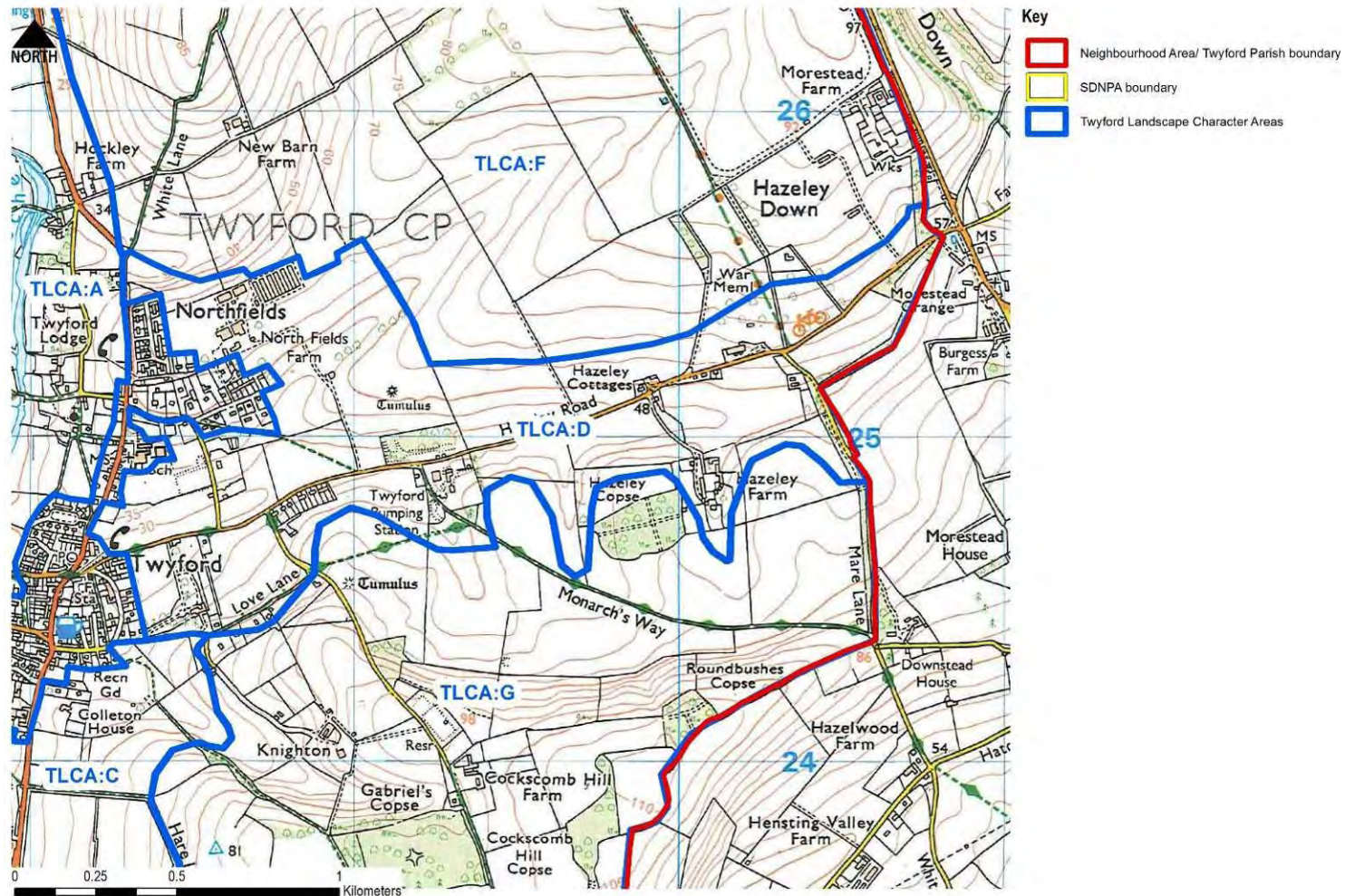


Figure 5. Landscape Character Area D – Hazeley Dry Valley

3.4.1 Landscape Character Area Description

Twyford Landscape Character Area D falls within the South Downs Integrated Landscape Assessment (SDILCA) Character Area E4: Itchen Valley.

This character area comprises a dry valley floor and lower slopes containing winterbourne springs and the Hazeley Road running east-west linking Twyford to Morestead. The sides of the valley are predominately open in character with areas of gently sloping pasture and arable fields containing the Hazeley Road, which provides an important rural and scenic approach to the village. The area is crossed by a number of public rights of way which provide important recreational links from the village to the downland to the south and east as well as links to Colden Common and Owslebury. The Monarchs Way and Pilgrims' Trail long distance paths also pass through the area. A number of small lanes branch from Hazeley Road to the north and south linking to farms. Some linear settlement and large scale agricultural buildings occur along Hazeley Road. The area includes Hazeley Enterprise Park and Feed Mill which, given their elevated positions, are prominent in views from the surrounding area. The Twyford Waterworks Scheduled Monument is a prominent landmark along the Hazeley Road.

3.4.2 Relevant Integrated Key Characteristics from SDILCA LCA E4:

- *Broad, branching valley carved from the chalk downs and indented by dry valleys and coombes to produce smoothly rounded valley sides.*
- *[...] Shallow well drained, calcareous silty soils support intensive arable cultivation on shallow slopes of the valley sides. Pasture and paddocks occur on the valley floor.*
- *Springs, including the main source of the Itchen, south of Cheriton, are located on the chalk.*
- *[...] Downstream of Itchen Abbas the landscape is of recent enclosure, comprising regular field systems with very little woodland.*
- *Crossed by the M3 and A roads which interrupt the otherwise tranquil landscape. A sequence of settlements occur along the lower valley sides.*

3.4.3 Key Landscape Characteristics and Sensitivities specific to Twyford Landscape Character Area D

Natural

- Forms the base and lower slopes of a dry valley between Hazeley Down to the north and Cockscomb hill to the south.
- Large to medium sized rolling pasture and paddock fields occur along the valley floor and sides particularly on the south side of Hazeley Road.
- Large open rolling arable fields defined by hedgerows
- Occasional blocks of woodland around farm buildings and trees belts along lanes provide some enclosure
- Avenue tree planting and parkland planting around Hazeley Down House. Linear topographical features in fields at Hazeley Down House could be historic hedge banks.
- Valley floor falls within Flood Zone 3. Ground water flooding within the dry valley bottom occurs in periods of prolonged rainfall. Presence of a winterbourne stream is indicated by road/house names (e.g. Bourne Lane).
- Twyford Waterworks Meadow and Hazeley Down (at the junction with Mare Lane and Hazeley Road) are SINCs.
- Tree and hedges provide good containment of Twyford's settlement edge

Cultural

- The Twyford Waterworks Scheduled Monument is a prominent landmark on the Hazeley Road
- The surrounding natural environment provides an important setting to numerous listed buildings and the conservation area, including a group of listed buildings at Hazeley Farm (C18) and Twyford School (Late C18 house which became preparatory school in 1809)
- Schedule monuments: Two bowl barrows 200m east of Twyford Pumping Station; Twyford Roman Villa.
- Field patterns formed by recent enclosure (18th-19th century).
- Parkland features around Littlebourne and Hazeley Down House including estate railings and parkland trees
- Narrow lanes often enclosed by tree belts and hedges and sometimes sunken
- Isolated farms with some associated cottages in small groups or in a linear arrangement along roads.
- Some large scale farm buildings occur along Hazeley Road and at the Hazeley Enterprise Park, some well contained by tree planting but others are more exposed.
- Trees and hedgerows within private gardens play an important contribution to the landscape character.
- Numerous public rights of way cross the area. The rights of way provide links to the downland to the north and south and include the Monarch's Way and Pilgrims' Trial long distance paths.
- Parks and gardens listed in the Hampshire Register of Historic Parks and Gardens: Twyford School, Twyford (site 1581); Orchard Close, Twyford (site 1584).

Perceptual

- The area has an overriding rural character becoming more tranquil away from the Hazeley Road
- Tranquility is somewhat affected by noise intrusions from surrounding roads and the flight path.
- The open character of the valley increases the sensitivity of the area with elements of enclosure provided by tree belts and woodland blocks and vegetation along the settlement edge.

3.4.4 Key Visual Sensitivities specific to Twyford Landscape Character Area D

Key views into the area are afforded from:

- Numerous well used public rights of way within the area linking the village to the surrounding downland including the Monarch's Way and Pilgrim's Way.
- Public rights of way along the high ground to the north and south including from the Monarch's Way to the south where there are long reaching views to Winchester.
- Hazeley Road and smaller lanes (sunken in places) branching from it
- Private houses
- The Hazeley Enterprise Park and Feed Mill are visually prominent from within the area and from the surrounding area including from Shawford and Shawford Down access land, Badger Farm Road and from the high ground to the north and west.
- The Hazeley Enterprise Park and Feed Mill are visible from the Hockley Viaduct Way and Cycle Route where the area is visible in panoramic views which include views to Winchester Cathedral.

Key views out of the area to:

- Views of rolling downland meeting the horizons.
- War memorial west of Hazeley Down House.
- Twyford church spire.

Key views within the area:

- Twyford Waterworks Scheduled Monument is a distinctive landmark feature within the area.
- Two bowl barrows 200m east of Twyford Pumping Station are a distinctive feature viewed from Hazeley Road.
- To listed buildings where the surrounding landscape provides a distinctive landscape setting
- Buildings within Hazeley Enterprise Park and the Feed Mill are prominent

3.4.5 Relationship to Settlement

- The settlement pattern is of isolated farms accessed off Hazeley Road with some linear settlement
- The western end abuts much of Twyford’s eastern and northern modern settlement edge east of the B3335 as well as encompassing Twyford School and playing fields which adjoin the conservation area of Twyford. The area includes the village’s modern extension north of Bourne Lane and east of the B3335. Generally the settlement edge is strongly vegetated where it abuts the open countryside.
- The area contains the Hazeley Enterprise Park and Feed Mill which form a collection of visually prominent large scale buildings on the highest point of the village
- The eastern parts of the area are more removed from the settlement.
- The area contributes to the gap which separates Twyford and Morestead and creates an important and attractive rural approach to the village.

3.4.6 Summary (including extent to which TLCA:D is representative of the wider LCA)

The area comprises a dry valley floor indenting the surrounding chalk downs and demonstrates many key natural, cultural and perceptual characteristics of the wider LCA with a number of historical designations and local ecological designations as well as the National Park designation. The area contributes to the varied landscape setting of the village of Twyford at the interface between the valley and the downland as well as contributing to the gap which separates Twyford and Morestead.

3.4.7 South Downs National Park Special Qualities

TLCA:D demonstrates elements from the following SDNPA Special Qualities:

SDNPA Special Qualities	Examples of how TLCA:D demonstrates special qualities
1. Diverse, inspirational landscapes and breathtaking views;	<ul style="list-style-type: none"> • Dry valley contributes to the diversity of the surrounding landscape character
2. A rich variety of wildlife and habitats including rare and internationally important species;	<ul style="list-style-type: none"> • Twyford Waterworks Meadow and Hazeley Down (at the junction with Mare Lane and Hazeley Road) are SINC.

3. Tranquil and unspoilt places;	<ul style="list-style-type: none"> The area has an overriding rural character becoming more tranquil away from the Hazeley Road
4. An environment shaped by centuries of farming and embracing new enterprise;	<ul style="list-style-type: none"> Large to medium sized rolling pasture and paddock fields occur along the valley floor. Field patterns formed by recent enclosure (18th-19th century); Hazeley Farm (C18).
5. Great opportunities for recreational activities and learning experiences;	<ul style="list-style-type: none"> Numerous public rights of way cross the area. The rights of way provide links to the downland to the north and south and include the Monarch's Way and Pilgrims' Trial long distance paths.
6. Well-conserved historical features and a rich cultural heritage;	<ul style="list-style-type: none"> Schedule monuments: Two bowl barrows 200m east of Twyford Pumping Station; Twyford Roman Villa; The surrounding natural environment provides an important setting to numerous listed buildings and the conservation area, including a group of listed buildings at Hazeley Farm (C18) and Twyford School (Late C18 house which became preparatory school in 1809); Parkland features around Littlebourne and Hazeley Down House including estate railings and parkland trees.
7. Distinctive towns and villages, and communities with real pride in their area.	<ul style="list-style-type: none"> Area contributes to the setting of and creates an important approach to Twyford Village

3.4.8 Relevant Land Management / Development Considerations from SDLICA

- *Conserve field and parkland boundaries.*
- *Maintain the nucleated form of villages and avoid extending linear development along roads. Minimise light spill from settlements.*
- *Pay particular attention to the varied nature of views throughout the area [...]*
- *Seek to limit further encroachment of suburban influences (such as fencing) around village properties and conserve areas of flint walling which are particularly distinctive features of a number of settlements.*

3.4.9 Land Management / Development Considerations specific to Twyford Landscape Character Area D

- Conserve field and parkland boundaries and features including hedges and trees. Seek to limit further encroachment of suburban influences (such as fencing) around village properties.
- Conserve distinctive sloping paddocks and pasture fields
- Explore opportunities for the provision of community open space taking advantage of the high amenity value of views across surrounding downland.
- Ensure new development is sympathetically integrated into the surrounding landscape using trees, woodland blocks and hedgerow planting.
- Seek to integrate existing large scale farm/commercial buildings using trees, woodland blocks and hedgerow planting.

Twyford Parish Landscape Assessment - Part 1: Landscape Character Assessment

- Ensure that any future road upgrades are integrated into the rural valley landscape and ensure any signage, kerbs, new/upgraded entrances and lighting are sensitively detailed.
- Conserve the character of rural lanes and in particular the approach to the village along Hazeley Road
- Conserve the character and integrity of historic farmsteads
- Avoid extending linear development along roads and minimise light spill.
- Considered the varied nature of views throughout the area and panoramic views from the surrounding high ground in relation change within the area.
- Conserve historic features associated with the Twyford Pumping Station
- Encourage the conservation of Schedule monuments through good farming practices
- Conserve views to the Twyford Pumping Station which is a distinctive landmark
- Consider the contribution of the landscape character to the setting of heritage assets

TLCA:D Photographs



Photo 1. View across the dry valley to the edge of village and church spire



Photo 2. Public rights of way link the village to the downland



Photo 3: Rolling pasture



Photo 4. Twyford Pumping Station which is a distinctive landmark

3.5 Landscape Character Area E – Twyford Down

Character area map:

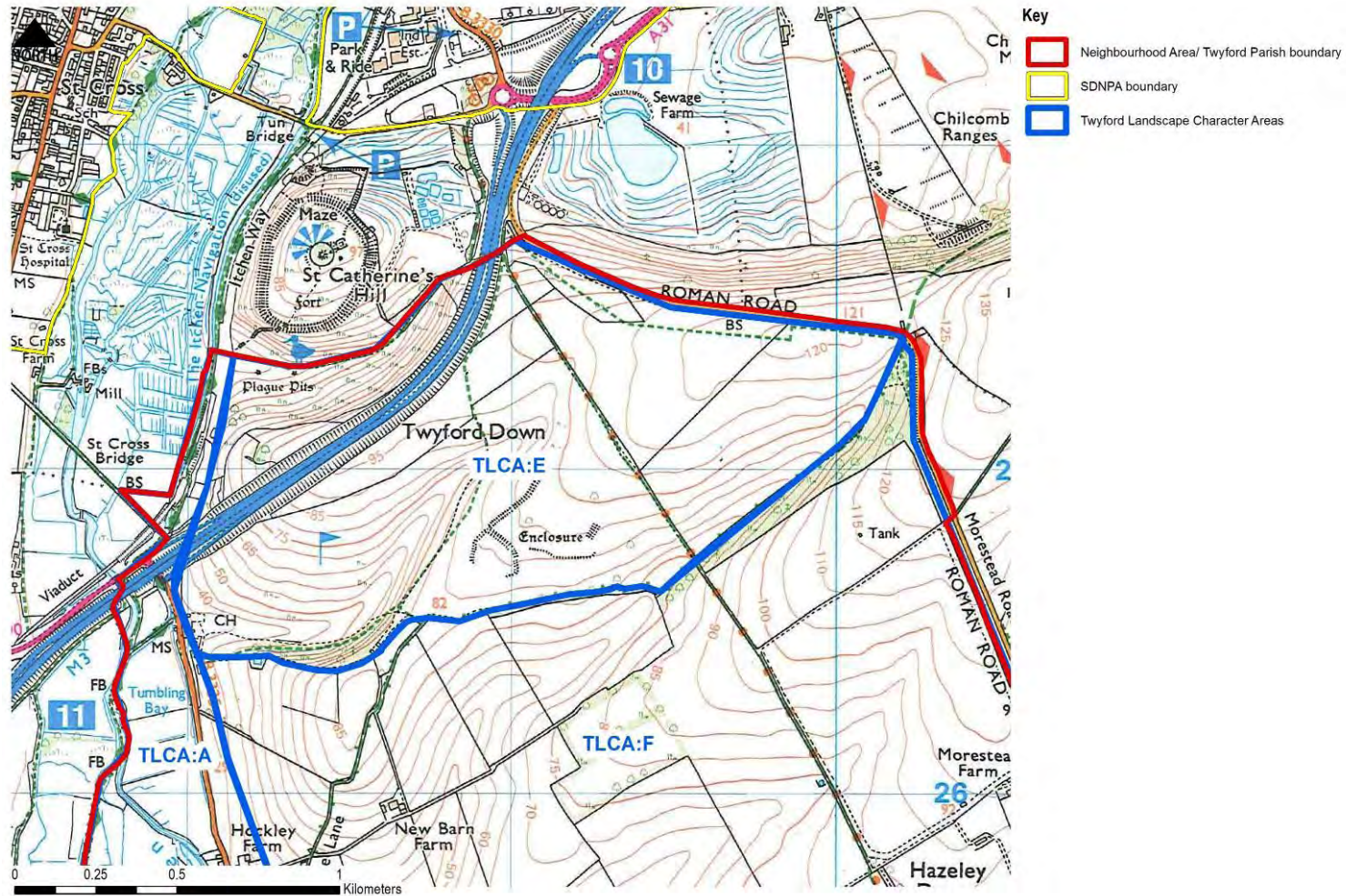


Figure 6. Landscape Character Area E – Twyford Down

3.5.1 Landscape Character Area Description

Twyford Landscape Character Area E falls within the South Downs Integrated Landscape Assessment (SDILCA) Character Area A5: East Winchester Open Downs.

This area is formed of a ridge and spurs of rolling chalk downland comprising Hockley Golf Course in the western area, large open agricultural fields in the eastern area and areas of chalk downland managed for wildlife conservation. The area contains the M3 cutting which divides the downland ridge in two. The northern boundary follows the Twyford Parish boundary. To the west the topography drops steeply to the Itchen valley floor. St Catherine's Hill open access area lies adjacent to the north beyond which lies Winchester. An area of open access land falls within the area to the north of the M3. The area's northern boundary follows the Morestead Road (along the route of the Winchester to Porchester Roman Road). The southern boundary of the area is defined by belts of trees and woodland. A number of public rights of way cross the area which provide links from Twyford to Winchester including the Pilgrims' Trail long distance path. There is a direct link to St Catherine's Hill via a bridge over the M3.

It is evident that the landscape has evolved over many hundreds of years, formed by the interaction of the natural environment and human activities, in particular the combination of physical, biological and cultural influences. Physical influences such as geology and landform, together with the overlying pattern of settlement and land use, particularly agricultural, are key influences that have formed the landscape character. The golf course contains significant evidence of a relict ancient landscape of many periods through history and retains a number of important visible earthworks. There are numerous Scheduled Monuments within the area including: earthwork remains of a Romano-British enclosure and later hollow ways; ancient field systems of lynchets on north west spur of Twyford Down of late Iron Age or early Romano-British date; and the Porchester to Winchester Roman road east of St Catherine's Hill. Twyford Down forms part of the high chalk downland which contributes to the setting of Winchester, containing evidence of early dwellers and historic transport links (Roman road and ancient trackways).

Relevant Integrated Key Characteristics from SDILCA LCA A5:

- *Open rolling upland chalk landscape of rolling Downs [...].*
- *Furrowed by extensive branching dry valley systems which produce deep, narrow, rounded coombs [...].*
- *Dominated by large 18th and 19th century fields of arable and pasture, bounded by sparse thorn hedgerows creating a very open landscape supporting a range of farmland birds.*
- *Hedgerows and tracks surviving from the earlier manorial downland landscape are important historic landscape features.*
- *Occasional areas of species rich unimproved chalk grassland occur, for example at Cheesefoot Head and St Catherine's Hill.*
- *Occasional scrub and woodland on steeper slopes, and game coverts, linear tree features and beech clumps on hill tops (notably at Cheesefoot Head and Deacon Hill) contribute to biodiversity and provide visual texture in the landscape.*
- *A landscape managed for country sports (game shooting) which preserves the shape and form of the landscape and creates a distinctive landcover including small woodlands and game cover plots.*
- *Large open skies ensure that weather conditions are a dominant influence creating a dynamic, moody landscape, particularly on higher ground e.g. at Cheesefoot Head.*
- *A strong sense of remoteness and tranquillity away from the major transport routes (M3, A31, A272) which cross the landscape.*

- *Large number of prehistoric and later earthworks, long barrows and round barrows, providing a strong sense of historical continuity. St Catherine's Iron Age hillfort occupies a commanding position overlooking Winchester*
- *Good public access with a network of public rights of way, including the South Downs Way National Trail, and open access land at Magdalen Hill Down and St Catherine's Hill.*
- *Panoramic views from Cheesefoot Head and from St Catherine's Hill across the Itchen Valley.*

3.5.2 Key Landscape Characteristics and Sensitivities specific to Twyford Landscape Character Area E

Natural

- An area of open rolling upland chalk landscape furrowed by dry valleys.
- In the western area and south of the M3 large 18th and 19th century fields of arable and pasture, bounded by sparse thorn hedgerows create a very open landscape supporting a range of farmland birds.
- Areas of species rich chalk grassland in the north of the area and at Hockley Golf Course are managed for wildlife conservation and as part of the preservation of Scheduled Monuments. Areas of scrub and woodland also occur on steeper slopes.
- Areas of BAP Priority Habitats: Lowland Calcareous Grassland, Lowland Meadows and Deciduous Woodland present.
- Hockley Golf Course as SINC and Local Wildlife Sites and areas adjacent/connected to St Catherine's Hill are designated SSSI.

Cultural

- Hockley Golf Course contains significant evidence of a relict ancient landscape of many periods through history and retains a number of important visible earthworks.
- There are numerous Scheduled Monuments within the area including: earthwork remains of a Romano-British enclosure and later hollow ways; ancient field systems of lynchets on north west spur of Twyford Down of late Iron Age or early Romano-British date; and the Porchester to Winchester Roman road.
- Twyford Down forms part of the high chalk downland which contributes to the setting of Winchester as well as containing evidence of early dwellers and historic transport links (Roman road and ancient trackways).
- One listed building falls within the area: Milestone 10 Metres South Of Tollgate Cottages (Grade 2).
- Ancient trackways cross the area including 'the Dongas' – believed to be the remains of parallel tracks of medieval or even earlier origin representing alternative ways down the hillside.
- The downland has historical links with the valley bottom to the west
- A number of public rights of way cross the area which provide links from Twyford to Winchester including the Pilgrims' Trail long distance path. An area of open access land falls within the area to the north of the M3. There is a direct link to St Catherine's Hill via a bridge over the M3.

Perceptual

- The area has an overriding rural character
- The downs has an exposed character contrasting with the sheltered environment of the Itchen Valley to the west.
- Tranquility is somewhat affected by noise and visual intrusions of the M3, B3335 and the flight path.

3.5.3 Key Visual Sensitivities specific to Twyford Landscape Character Area E

Key views into the area are afforded from:

- Numerous well used public rights of way linking Twyford village to Winchester including Pilgrims' Trail long distance path.
- St Catherine's Hill open access land where the area is visible in panoramic views which include views to Winchester and the cathedral.
- Many surrounding public rights of way including along the Itchen valley bottom, Hockley Viaduct and from the high ground to the west. From the west the lynchets ancient field systems can be appreciated within their wider historic setting.
- Many surrounding roads including M3, B3335, Morestead Road and Shawford Road (trees clumps visible) and roads to the north
- Private houses

Key views out of the area to:

- Winchester and St Catherine's Hill
- Panoramic views across surrounding downland including Hazeley Down, Cockscombe Hill and distinctive tree clumps e.g. at Deacon Hill
- Hazeley Enterprise Park and Feed Mill
- Grade 2* listed church of St Mary
- Itchen Valley and long reaching views to settlements along the South Coast and Isle of Wight from the high ground.

Key views within the area:

- Views to the visible features of Schedule Monuments and ancient trackways set within a distinctive landscape setting
- Views across the open downland to large open skies

3.5.4 Relationship to Settlement

- The area is far removed from the settlement area of Twyford
- The area has cultural links (e.g. agricultural use and ancient routes) with Twyford and some intervisibility
- The area plays an contributes to the gap which separates Twyford and Winchester.

3.5.5 Summary (including extent to which TLCA:E is representative of the wider LCA)

The area demonstrates many key natural, cultural and perceptual characteristics of the wider LCA with numerous ecological and historical designations as well as the National Park designation. The area provides an important landscape setting to the riverside village of Twyford as well as the setting of Winchester to the north and the gap between the two settlements.

3.5.6 South Downs National Park Special Qualities

TLCA:E demonstrates elements from the following SDNPA Special Qualities:

SDNPA Special Qualities	Examples of how TLCA:E demonstrates special qualities
1. Diverse, inspirational landscapes and breathtaking views;	<ul style="list-style-type: none"> Area of open rolling upland chalk landscape furrowed by dry valleys contributes to the diversity of the landscape and affording panoramic views across the surrounding area
2. A rich variety of wildlife and habitats including rare and internationally important species;	<ul style="list-style-type: none"> Hockley Golf Course as SINC and Local Wildlife Sites and areas adjacent/connected to St Catherine's Hill are designated SSSI. Areas of species rich chalk grassland.
3. Tranquil and unspoilt places;	<ul style="list-style-type: none"> Despite the impact of the M3 much of the remaining downland character and historic features are intact.
4. An environment shaped by centuries of farming and embracing new enterprise;	<ul style="list-style-type: none"> Evidence of farming including ancient field systems of lynchets and ancient trackways; species-rich grassland resulting from centuries of grazing on nutrient poor chalks soils; field patterns formed by recent enclosure (18th-19th century).
5. Great opportunities for recreational activities and learning experiences;	<ul style="list-style-type: none"> A number of public rights of way cross the area which provide links from Twyford to Winchester including the Pilgrims' Trail long distance path. An area of open access land falls within the area to the north of the M3. There is a direct link to St Catherine's Hill via a bridge over the M3.
6. Well-conserved historical features and a rich cultural heritage;	<ul style="list-style-type: none"> Hockley Golf Course contains significant evidence of a relict ancient landscape of many periods through history and retains a number of important visible earthworks; There are numerous Scheduled Monuments within the area including: earthwork remains of a Romano-British enclosure and later hollow ways. Ancient field systems of lynchets on north west spur of Twyford Down of late Iron Age or early Romano-British date; and the Porchester to Winchester Roman road. Historic transport links (Roman road and ancient trackways).
7. Distinctive towns and villages, and communities with real pride in their area.	<ul style="list-style-type: none"> Area contributes to the setting of Twyford Village.

3.5.7 Relevant Land Management / Development Considerations from SDLICA

- *Encourage landowners to soften the rectilinear blocks of woodland, particularly where they occur on prominent escarpments, by selective felling and the planting of indigenous edge species. Remove inappropriate game coverts i.e. those that occur on prominent escarpments or hill tops.*
- *Avoid field expansion and hedgerow boundary loss that would erode the intact 18th-19th century planned enclosure landscape pattern.*
- *Provide appropriate management for significant skyline tree groups e.g. The Clump at Cheesefoot Head. Support limited planting of new landmark tree groups at carefully selected key locations as landmark features.*
- *Preserve the hillfort at St Catherine's Hill and manage scrub encroachment.*
- *Prevent further fragmentation of the East Winchester Downs by roads and development.*
- *Seek opportunities to reduce the visual impact of existing visually intrusive elements such as the infrastructure and traffic associated with the M3, A272, and A31, and prominent built elements on the edge of Winchester.*
- *Consider use of whisper tarmac on major routes such as the M3 to reduce traffic noise.*
- *Maintain the open and undeveloped scarps and skylines – avoid siting of buildings, telecommunication masts, power lines and wind turbines on the sensitive skyline.*
- *Encourage use of traditional building styles and materials when expanding/modernising farm buildings and encourage sympathetic re-use of any traditional farm buildings that may become redundant (such as the flint barns) so as to maintain their external fabric, appearance and setting. Refer to guidance contained in the Historic Farmsteads study²⁰.*
- *Take account of views from this area when considering change in adjacent areas beyond the study area, such as in Winchester. Pay particular attention to popular viewpoints at Cheesefoot Head and St Catherine's Hill.*

3.5.8 Land Management / Development Considerations specific to Twyford Landscape Character Area E

- *Maintain the rich historic character of the area, including archaeological monuments and their settings and distinctive historic field patterns. Encourage good land management techniques to conserve distinctive ancient earthworks and promote wildlife conservation including through grazing and scrub control.*
- *Conserve field boundaries and woodland including woodland clump to the north of M3*
- *Continue to maintain and enhance existing areas of chalk grassland by grazing and scrub control and extend and link areas where possible.*
- *Maintain the open and undeveloped scarps and skylines – avoid siting of buildings, telecommunication masts, power lines and wind turbines on the sensitive skyline. Ensure development associated with the golf course is sympathetically integrated into the landscape.*
- *Take account of views from this area in relation to development in the wider Twyford Parish including the Hazeley Enterprise Park and Feed Mill. Encourage use of traditional building styles and materials when expanding/modernising farm buildings and ensure buildings are sympathetically integrated into the landscape using native tree, hedge and woodland planting.*

TLCA:E Photographs



Photo 1. View from St. Catherine's Hill species rich grassland on Twyford Down



Photo 2. Ancient field systems of lynchets managed by grazing and hay cutting



Photo 3. 'The Dongas' - ancient trackways



Photo 4. Views to Winchester from high ground

3.6 Landscape Character Area F – Hazeley Down

Character area map:

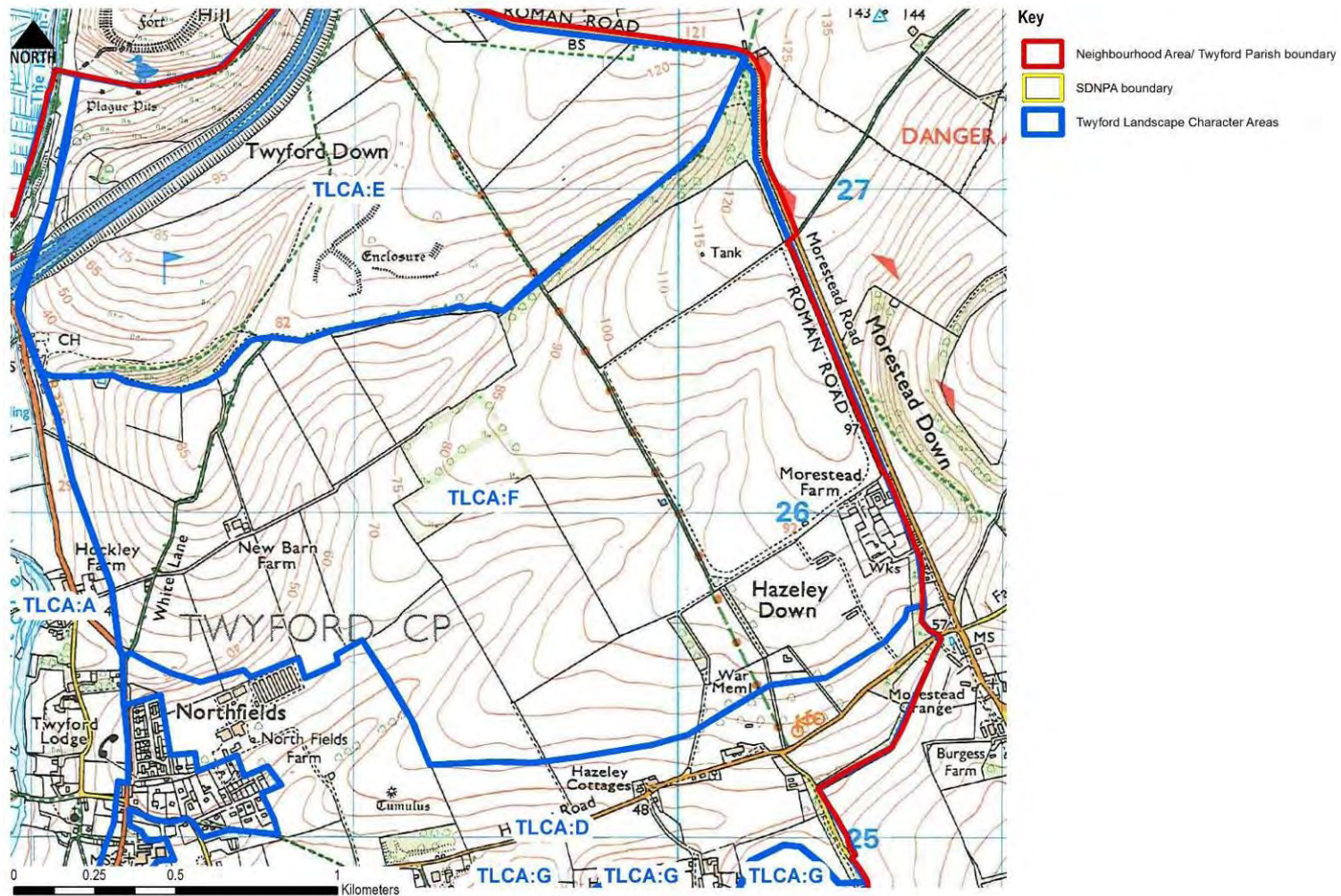


Figure 7. Landscape Character Area F – Hazeley Down

3.6.1 Landscape Character Area Description

Twyford Landscape Character Area F falls within the South Downs Integrated Landscape Assessment (SDILCA) Character Area A5: East Winchester Open Downs.

This area is formed of a ridge and spurs of rolling chalk downland comprising medium to large open agricultural fields defined by hedges and blocks of woodland. The area contains a number of isolated farms accessed by farm tracks/lanes and an equine complex at Morestead farm with associated gallops. Some remains of a First World War Camp can be found near the War Memorial to the north of the Hazeley Road. The eastern boundary follows the Twyford Parish boundary and the Morestead Road (along the route of the Winchester to Porchester Roman Road). The southern boundary of the area is defined by belts of tree and woodland. To the west the topography drops steeply to the Itchen valley floor with Twyford Down to the north. The southern boundary drops down to the Hazeley dry valley. A number of public rights of way cross the area which provide links from Twyford to Winchester including the Pilgrims' Trail long distance path.

Relevant Integrated Key Characteristics from SDILCA LCA A5:

- *Open rolling upland chalk landscape of rolling Downs [...].*
- *Furrowed by extensive branching dry valley systems which produce deep, narrow, rounded coombs [...].*
- *Dominated by large 18th and 19th century fields of arable and pasture, bounded by sparse thorn hedgerows creating a very open landscape supporting a range of farmland birds.*
- *Hedgerows and tracks surviving from the earlier manorial downland landscape are important historic landscape features.*
- *Occasional scrub and woodland on steeper slopes, and game coverts, linear tree features and beech clumps on hill tops (notably at Cheesefoot Head and Deacon Hill) contribute to biodiversity and provide visual texture in the landscape.*
- *A landscape managed for country sports (game shooting) which preserves the shape and form of the landscape and creates a distinctive landcover including small woodlands and game cover plots.*
- *Large open skies ensure that weather conditions are a dominant influence creating a dynamic, moody landscape, particularly on higher ground e.g. at Cheesefoot Head.*
- *A strong sense of remoteness and tranquillity away from the major transport routes (M3, A31, A272) which cross the landscape.*
- *Good public access with a network of public rights of way, including the South Downs Way National Trail, and open access land at Magdalen Hill Down and St Catherine's Hill.*
- *Panoramic views from Cheesefoot Head and from St Catherine's Hill across the Itchen Valley.*

3.6.2 Key Landscape Characteristics and Sensitivities specific to Twyford Landscape Character Area F

Natural

- An area of open rolling upland chalk landscape furrowed by dry valleys.

Twyford Parish Landscape Assessment - Part 1: Landscape Character Assessment

- Medium to large 18th and 19th century fields of arable and pasture, bounded by sparse thorn hedgerows create a very open landscape supporting a range of farmland birds.
- Scrub and woodland on steeper slopes in the north of the area and along the Morestead Road.
- Areas of BAP Priority Habitats: Deciduous Woodland present.
- Adjacent Hockley Golf Course and areas is designated as a SINC and a Local Wildlife Site.

Cultural

- The Porchester to Winchester Roman road defines the area's eastern boundary.
- Part of the series of ridgelines which contributes to the setting of Winchester as well as containing historic transport links (Roman road)
- War memorial to the west of Hazeley Down House
- The downland has historical links with the valley bottom to the west
- A number of public rights of way cross the area which provide links from Twyford to Winchester including the Pilgrims' Trail long distance path.

Perceptual

- The area has an overriding rural character
- The Downs has an exposed character contrasting with the sheltered environment of the Itchen Valley to the west.
- Tranquility is somewhat affected by noise and visual intrusions of the M3, B3335 and the flight path.

3.6.3 Key Visual Sensitivities specific to Twyford Landscape Character Area F

Key views into the area are afforded from:

- Numerous well used public rights of way linking Twyford village to Winchester including Pilgrims' Trail long distance path.
- Many surrounding public rights of way including along the Itchen valley bottom, Hockley Viaduct and from the high ground to the west and south.
- Long distance views from Cheesefoot Head
- Many surrounding roads including M3, B3335, Morestead Road and glimpses from Shawford Road
- Private houses

Key views out of the area to:

- Winchester and St Catherine's Hill
- Panoramic views across surrounding downland including Hazeley Down, Cockscombe Hill and distinctive tree clumps e.g. at Deacon Hill
- Hazeley Enterprise Park and Feed Mill
- Grade 2* listed church of St Mary
- Itchen Valley and long reaching views to settlements along the South Coast and Isle of Wight from the high ground.

Key views within the area:

- Views across the open downland to large open skies

3.6.4 Relationship to Settlement

- The area is abuts the northern area of the village with the north and eastern area more removed
- The area has cultural links (e.g. agricultural use and ancient routes) with Twyford and some intervisibility
- The area contributes to the gap which separates Twyford and Winchester.

3.6.5 Summary (including extent to which TLCA:F is representative of the wider LCA)

The area demonstrates many key natural, cultural and perceptual characteristics of the wider LCA as well as the National Park designation. The area provides an important landscape setting to the village of Twyford as well as contributing to the setting of Winchester to the north and the gap between the two settlements.

3.6.6 South Downs National Park Special Qualities

TLCA:F demonstrates elements from the following SDNPA Special Qualities:

SDNPA Special Qualities	Examples of how TLCA:F demonstrates special qualities
1. Diverse, inspirational landscapes and breathtaking views;	<ul style="list-style-type: none"> • Area of open rolling upland chalk landscape furrowed by dry valleys contributes to the diversity of the landscape and affording panoramic views across the surrounding area
2. A rich variety of wildlife and habitats including rare and internationally important species;	<ul style="list-style-type: none"> • Areas of BAP Priority Habitats: Deciduous Woodland present. Adjacent Hockley Golf Course and areas is designated as a SINC and a Local Wildlife Site.
3. Tranquil and unspoilt places;	<ul style="list-style-type: none"> • Despite the impact of the nearby M3 much of the remaining downland character is intact.
4. An environment shaped by centuries of farming and embracing new enterprise;	<ul style="list-style-type: none"> • Field patterns formed by recent enclosure (18th-19th century).
5. Great opportunities for recreational activities and learning experiences;	<ul style="list-style-type: none"> • A number of public rights of way cross the area which provide links from Twyford to Winchester including the Pilgrims' Trail long distance path.
6. Well-conserved historical features and a rich cultural heritage;	<ul style="list-style-type: none"> • The Porchester to Winchester Roman road defines the area's eastern boundary. Part of the series of ridgelines which contributes to the setting of Winchester as well as containing historic transport links (Roman road). War memorial to the west of Hazeley Down House.
7. Distinctive towns and villages, and communities with real pride in their area.	<ul style="list-style-type: none"> • Area contributes to the setting of Twyford Village.

3.6.7 Relevant Land Management / Development Considerations from SDLICA

- *Encourage landowners to soften the rectilinear blocks of woodland, particularly where they occur on prominent escarpments, by selective felling and the planting of indigenous edge species. Remove inappropriate game coverts i.e. those that occur on prominent escarpments or hill tops.*
- *Avoid field expansion and hedgerow boundary loss that would erode the intact 18th-19th century planned enclosure landscape pattern.*
- *Prevent further fragmentation of the East Winchester Downs by roads and development.*
- *Seek opportunities to reduce the visual impact of existing visually intrusive elements such as the infrastructure and traffic associated with the M3, A272, and A31, and prominent built elements on the edge of Winchester.*
- *Maintain the open and undeveloped scarps and skylines – avoid siting of buildings, telecommunication masts, power lines and wind turbines on the sensitive skyline.*
- *Encourage use of traditional building styles and materials when expanding/modernising farm buildings and encourage sympathetic re-use of any traditional farm buildings that may become redundant (such as the flint barns) so as to maintain their external fabric, appearance and setting. Refer to guidance contained in the Historic Farmsteads study20.*
- *Take account of views from this area when considering change in adjacent areas beyond the study area, such as in Winchester. Pay particular attention to popular viewpoints at Cheesefoot Head and St Catherine's Hill.*

3.6.8 Land Management / Development Considerations specific to Twyford Landscape Character Area F

- Maintain and restore woodland, hedgerows, tree clumps and single tree features
- Encourage good land management techniques to promote wildlife conservation including managing scrub encroachment and incorporating areas of wildflower.
- Conserve the smaller scale field patterns and discourage further enlargement of fields.
- Encourage the formation of chalk grassland around large arable fields and providing linkages between existing areas.
- Maintain the open and undeveloped scarps and skylines – avoid siting of buildings, telecommunication masts, power lines and wind turbines on the sensitive skyline.
- Conserve views to distinctive tree clumps e.g. at Deacon Hill
- Take account of views from this area in relation to development in the wider Twyford Parish including at the Hockley Golf Course the Hazeley Enterprise Park and Feed Mill. Encourage use of traditional building styles and materials when expanding/modernising farm buildings and ensure buildings are sympathetically integrated into the landscape using native tree, hedge and woodland planting.

TLCA:F Photographs



Photo 1. Medium and large 18th and 19th century fields of arable and pasture, bounded by sparse thorn hedgerows



Photo 2. Woodland on steeper slopes



Photo 3. View from White Lane to Hazeley Enterprise Park



Photo 4. Views across area to tree clump at Deacon Hill

3.7 Landscape Character Area G – Cockscomb Hill Downland Mosaic

Character area map:

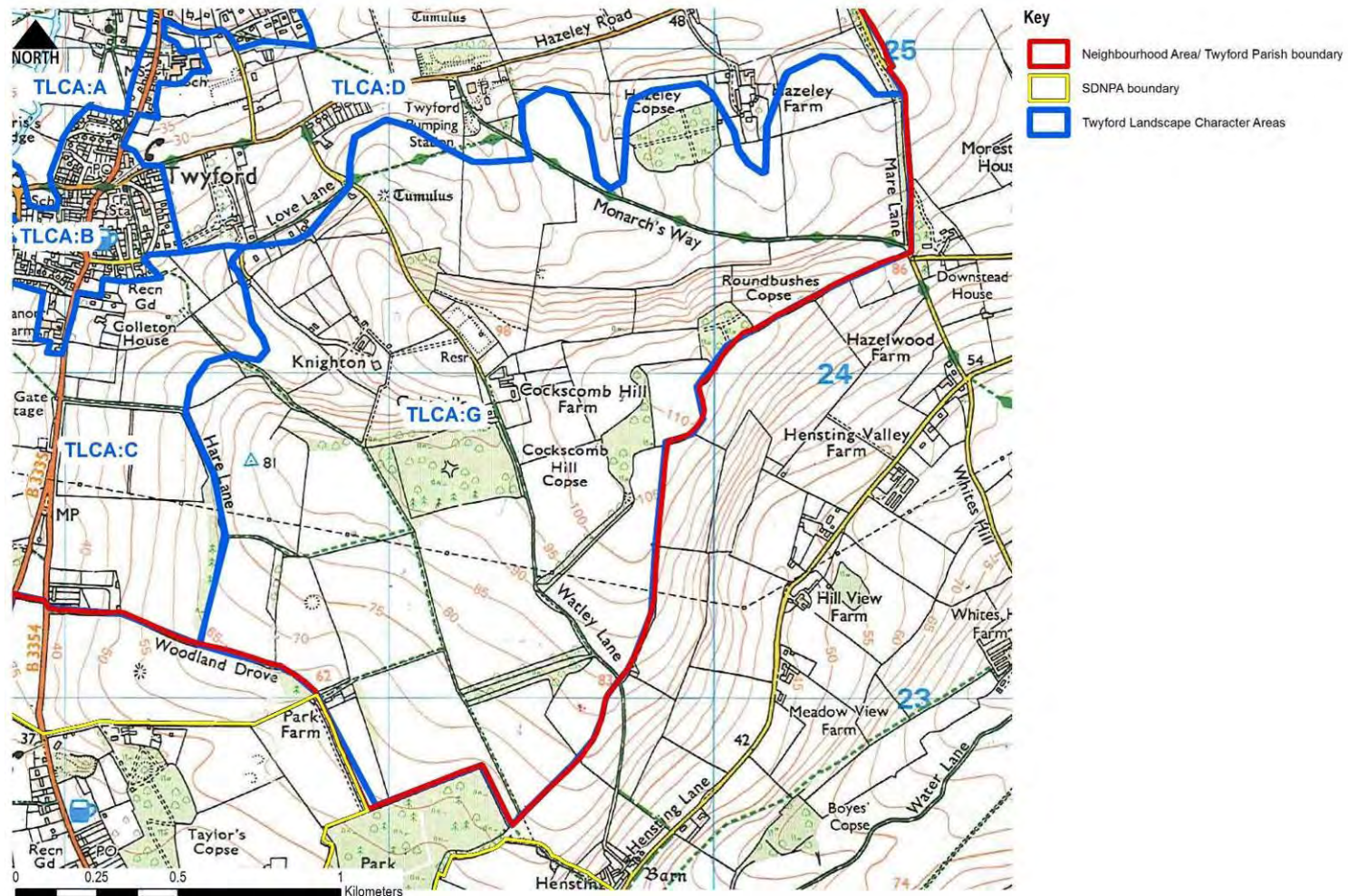


Figure 8. Landscape Character Area G – Cockscomb Hill Downland Mosaic

3.7.1 Landscape Character Area Description

Twyford Landscape Character Area G falls within the South Downs Integrated Landscape Assessment (SDILCA) Character Area D1: South Winchester Downland Mosaic (enclosed).

This character is area part of a localised secondary chalk escarpment of rolling landform dissected by dry valleys running between Twyford and Droxford. It comprises an area of small to medium sized pasture, paddocks and arable fields, enclosed by a strong pattern of woodland and thick hedgerows, on the 'dipslope' of the chalk to the west of Twyford village. The field patterns are largely formed by recent enclosure, however there is an area of early assarted enclosures with thick hedgerows, tree belts and ancient woodland to the south of the area. There are significant remnants of The Bishop of Winchester's (1323) hunting park (evident on the 1st OS historic map) including Gabriel's Copse ancient woodland and lengths of 'park pale' (an earth bank with internal ditch that once enclosed the hunting park) and field patterns of old components of the park. All four parcels of Ancient Woodland within the Twyford Parish are located within this character area: Gabriel's Copse, Cockscomb hill copse, Round bushes Copse, Hazeley Copse. Small remnants of woodland can be found along hangers and field boundaries as well as new plantations including 19th Century planting along roadsides (largely beech). An area of clay capping in the southern area is marked by the presence of a high proportion of oak trees. Some isolated farms fall within the area access by rural lanes. To the west of the area the topography drops to the Itchen valley floor. The southern boundary is formed by the Parish boundary beyond which is another dry valley at Owslebury. A number of public rights of way cross the area providing access from the village to the downland and linking to Colden Common and Owslebury. The Monarchs Way and Pilgrims' Trail also pass through the area. Mare Lane crosses the eastern end of the area connecting Hazeley Road to Owslebury. Power lines cross the middle of the area.

Relevant Integrated Key Characteristics from SDILCA LCA D:

- *Large scale rolling landform characteristic of the chalk dipslope, dissected by dry valleys, with a localised secondary escarpment running between Twyford and Droxford.*
- *Secondary escarpment supports chalk grassland and woodland e.g. Galley Down Wood SSSI.*
- *Surface clay capping along the bottom of the dipslope results in a more enclosed landscape along the dipslope.*
- *A large area of early assarted enclosures with thick hedgerows and large areas of woodland creates a small scale secluded landscape across the central part of the character area.*
- *Predominantly arable farming with some pasture, stud and pig farms.*
- *A strong pattern of woodland cover, including ancient woodland of national importance, wood pasture on Kilmeston Down, and hedgerows providing a sense of enclosure.*
- *Occasional areas of unimproved chalk grassland and associated woody scrub, including juniper scrub which is of particular biodiversity interest.*
- *A low density of dispersed settlement across the downland with nucleated villages on the dipslope of the downland e.g. Owlesbury and Upham, linked by a network of sinuous rural roads.*
- *A landscape with a generally strong rural, secluded character, [...].*
- *Panoramic views across downland, in particular from Beacon Hill across the Meon Valley to Winchester Hill and from the dipslope towards the south coast and the Isle of Wight.*

3.7.2 Key Landscape Characteristics and Sensitivities specific to Twyford Landscape Character Area G

Natural

- Part of a localised secondary chalk escarpment of rolling landform dissected by dry valleys running between Twyford and Droxford
- Small to medium sized pasture, paddocks and arable fields, largely formed by recent enclosure, and woodland.
- All four parcels of Ancient Woodland within the Twyford Parish are located within this character area: Gabriel's Copse, Cockscomb hill copse, Round bushes Copse, Hazeley Copse. Small remnants of woodland can be found along hangers and field boundaries as well new plantations including 19th Century planting along roadsides (largely Beech).
- Areas of BAP Priority Habitats: Deciduous Woodland and Lowland Calcareous Grassland present.
- Gabriel's Copse, Cockscomb hill copse, Round bushes Copse, Hazeley Copse and Cockscomb Down are all areas is designated as SINC's and Local Wildlife Site's.
- Areas of chalk grassland at Cockscomb Down

Cultural

- Significant remnants of The Bishop of Winchester's (1323) hunting park (evident on the 1st OS historic map) including Gabriel's Copse ancient woodland and lengths of 'park pale' (an earth bank with internal ditch that once enclosed the hunting park) and field patterns of old components of the park.
- An area of early assarted enclosures with thick hedgerows, tree belts and ancient woodland to the south of the area
- The downland has historical links with the valley bottom to the west
- A number of public rights of way cross the area providing access from the village to the downland and linking to Colden Common and Owslebury. The Monarchs Way and Pilgrims' Trail also pass through the area. Mare Lane crosses the eastern end of the area connecting Hazeley Road to Owslebury.
- Narrow rural lanes and farm tracks linking to isolated farms often enclosed by hedges and tree belts and sometimes sunken

Perceptual

- The area has an overriding rural character
- The early assarted enclosures, thick hedgerows, tree belts and ancient woodland create a small scale secluded landscape contrasting with the exposed character of the open downland of the character areas to the north
- The most tranquil of the Twyford character areas

3.7.3 Key Visual Sensitivities specific to Twyford Landscape Character Area G

Key views into the area are afforded from:

- Numerous well used of public rights of way cross the area providing access from the village to the downland and linking to Colden Common and Owslebury including the Monarchs Way and Pilgrims' Trail.
- Mare Lane connecting Hazeley Road to Owslebury.

- Many surrounding public rights of way and roads including along the Itchen valley bottom, Hockley Viaduct and from the surrounding high ground including Shawford Down open access land.
- Long distance views from Cheesefoot Head
- Private houses

Key views out of the area to:

- Long reaching views to Winchester and tree clumps at St Catherine's Hill and Cheesefoot Head from the high ground.
- Panoramic views across surrounding downland including Hazeley Down and dry valley
- Hazeley Enterprise Park and Feed Mill
- Grade 2* listed church of St Mary and Twyford Waterworks Scheduled Monument

Key views within the area:

- Views across the distinctive open combe at Cockscomb Hill

3.7.4 Relationship to Settlement

- The area is close to the eastern area of the village with the south and eastern area more removed
- The area has cultural links (e.g. agricultural use and historic hunting park) with Twyford village and some intervisibility
- The area contributes to the gap which separates Twyford and Colden Common and Owslebury.

3.7.5 Summary (including extent to which TLCA:G is representative of the wider LCA)

The area demonstrates many key natural, cultural and perceptual characteristics of the wider LCA and includes a number of ecological designations as well as the National Park designation. The area provides an important landscape setting to the village of Twyford as well as contributing to the gap between Twyford and Colden Common and Owslebury.

3.7.6 South Downs National Park Special Qualities

TLCA:G demonstrates elements from the following SDNPA Special Qualities:

SDNPA Special Qualities	Examples of how TLCA:G demonstrates special qualities
1. Diverse, inspirational landscapes and breathtaking views;	<ul style="list-style-type: none"> Part of a localised secondary chalk escarpment of rolling landform dissected by dry valleys running between Twyford and Droxford contributes to the diversity of the landscape and affording panoramic views across the surrounding area
2. A rich variety of wildlife and habitats including rare and internationally important species;	<ul style="list-style-type: none"> Gabriel's Copse, Cockscomb hill copse, Round bushes Copse, Hazeley Copse and Cockscomb Down are all areas is designated as SINC's and Local Wildlife Site's. Areas of BAP Priority Habitats: Deciduous Woodland and Lowland Calcareous Grassland present.
3. Tranquil and unspoilt places;	<ul style="list-style-type: none"> The early assarted enclosures, thick hedgerows, tree belts and ancient woodland create a small scale secluded landscape contrasting with the exposed character of the open downland of the character areas to the north. The most tranquil of the Twyford character areas.
4. An environment shaped by centuries of farming and embracing new enterprise;	<ul style="list-style-type: none"> An area of early assarted enclosures with thick hedgerows, tree belts and ancient woodland to the south of the area
5. Great opportunities for recreational activities and learning experiences;	<ul style="list-style-type: none"> A number of public rights of way cross the area providing access from the village to the downland and linking to Colden Common and Owslebury. The Monarchs Way and Pilgrims' Trail also pass through the area. Mare Lane crosses the eastern end of the area connecting Hazeley Road to Owslebury.
6. Well-conserved historical features and a rich cultural heritage;	<ul style="list-style-type: none"> Significant remnants of The Bishop of Winchester's (1323) hunting park (evident on the 1st OS historic map) including Gabriel's Copse ancient woodland and lengths of 'park pale' (an earth bank with internal ditch that once enclosed the hunting park) and field patterns of old components of the park.
7. Distinctive towns and villages, and communities with real pride in their area.	<ul style="list-style-type: none"> Area contributes to the setting of Twyford Village.

3.7.7 Relevant Land Management / Development Considerations from SDLICA

- *Conserve the prominence of the secondary escarpment running between Twyford and Droxford.*
- *Preserve the large area of early assarted enclosures with thick hedgerows and significant tracts of ancient woodland e.g. Preshaw Wood and Dur Wood.*
- *Encourage re-introduction of traditional woodland management techniques, such as coppicing, and promote interest in, and marketing of, local wood products, including wood for fuel*

- *Conserve, and seek to extend, areas of unimproved chalk grassland at Beacon Hill and on the secondary scarp by continuing to manage (graze), the sites.*
- *Maintain a balance between wooded and open areas.*
- *Conserve and continue to manage areas of semi-natural woodland [...]*
- *Conserve the panoramic views across downland from ridge tops, particularly from Beacon Hill.*

3.7.8 Land Management / Development Considerations specific to Twyford Landscape Character Area G

- Conserve field boundaries and woodlands
- Conserve remnant historic features associated with the The Bishop of Winchester's (1323) hunting park
- Conserve and seek to extend and incorporate new areas of chalk grassland at Cockscomb Down
- Ensure development is sympathetically integrated into the landscape and does not threaten the rural, secluded character of the downs.
- Preserve the area of early assarted enclosures with thick hedgerows and tree belts and areas of ancient woodland
- Take account of views from this area in relation to development in the wider Twyford Parish including the Hazeley Enterprise Park and Feed Mill.
- Encourage use of traditional building styles and materials when expanding/modernising farm buildings and ensure buildings are sympathetically integrated into the landscape using native tree, hedge and woodland planting.
- Seek to sympathetically integrate equestrian uses into the landscape with careful siting of field shelters

TLCA:G Photographs



Photo 1. Long reaching views from high ground



Photo 2. Combe near Cockscombe Hill



Photo 3. Early assarted enclosures with woodland boundary



Photo 4. Mature Oak trees on area of the clay capping

4. REFERENCES

- National Planning Policy Framework (2012)
- South Downs Integrated Landscape Character Assessment (2011)
- South Downs Draft Local Plan (September 2015) and evidence base
- SDNPA's Settlement Boundary Review: Methodology Paper (September 2015)
- Winchester Local Plan (2006)
- Winchester Core Strategy
- The Setting of Winchester: commission by City of Winchester Trust (1999)
- St Catherine's Hill and Twyford Down Landscape Management Plan by EPR (1990)
- Hampshire County Council Integrated Landscape Assessment (2012)
- Winchester City Council Landscape Character Assessment (2002)
- Twyford Historic Rural Settlements HCC publication (2004)
- Twyford Conservation Area: Winchester City Council (date unknown)
- Twyford: Character Assessment of Built Form (2015)
- The Landscape Institute and IEMA 'Guidelines for landscape and visual impact assessment' 3rd Edition (2013)
- CPRE tranquillity mapping (CPRE's Website accessed December 2015)
- Inspector's Report: South Downs National Park Boundary Report (date unknown)
- GIS datasets:
 - © *English Heritage 2015. Contains Ordnance Survey data © Crown copyright and database right 2015.*
 - © *Natural England copyright. Contains Ordnance Survey data © Crown copyright and database right 2015.*
 - © *Environment Agency copyright. Contains Ordnance Survey data © Crown copyright and database right 2015.*
 - © *South Downs National Park copyright. Contains Ordnance Survey data © Crown copyright and database right 2015.*
 - © *Hampshire Biodiversity Information Centre Partnership copyright supplied by Hampshire County Council. Contains Ordnance Survey data © Crown copyright and database right 2015.*

NOTE: All Ordnance Survey material used under Copyright License Number 10001 665

PARISH WIDE FIGURES

Figure A Topography

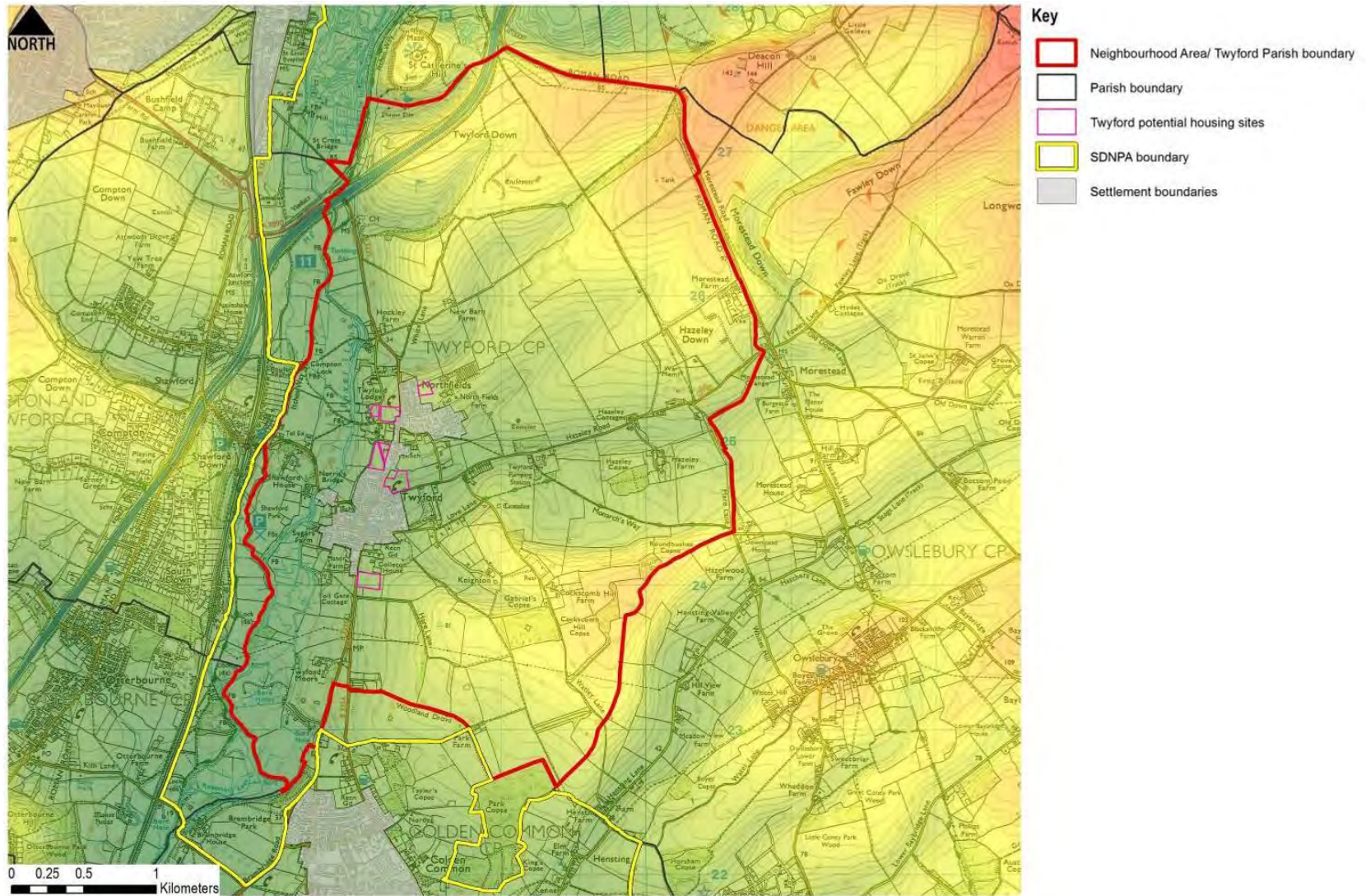


Figure B Landscape Designations and SDNPA Landscape Character Areas

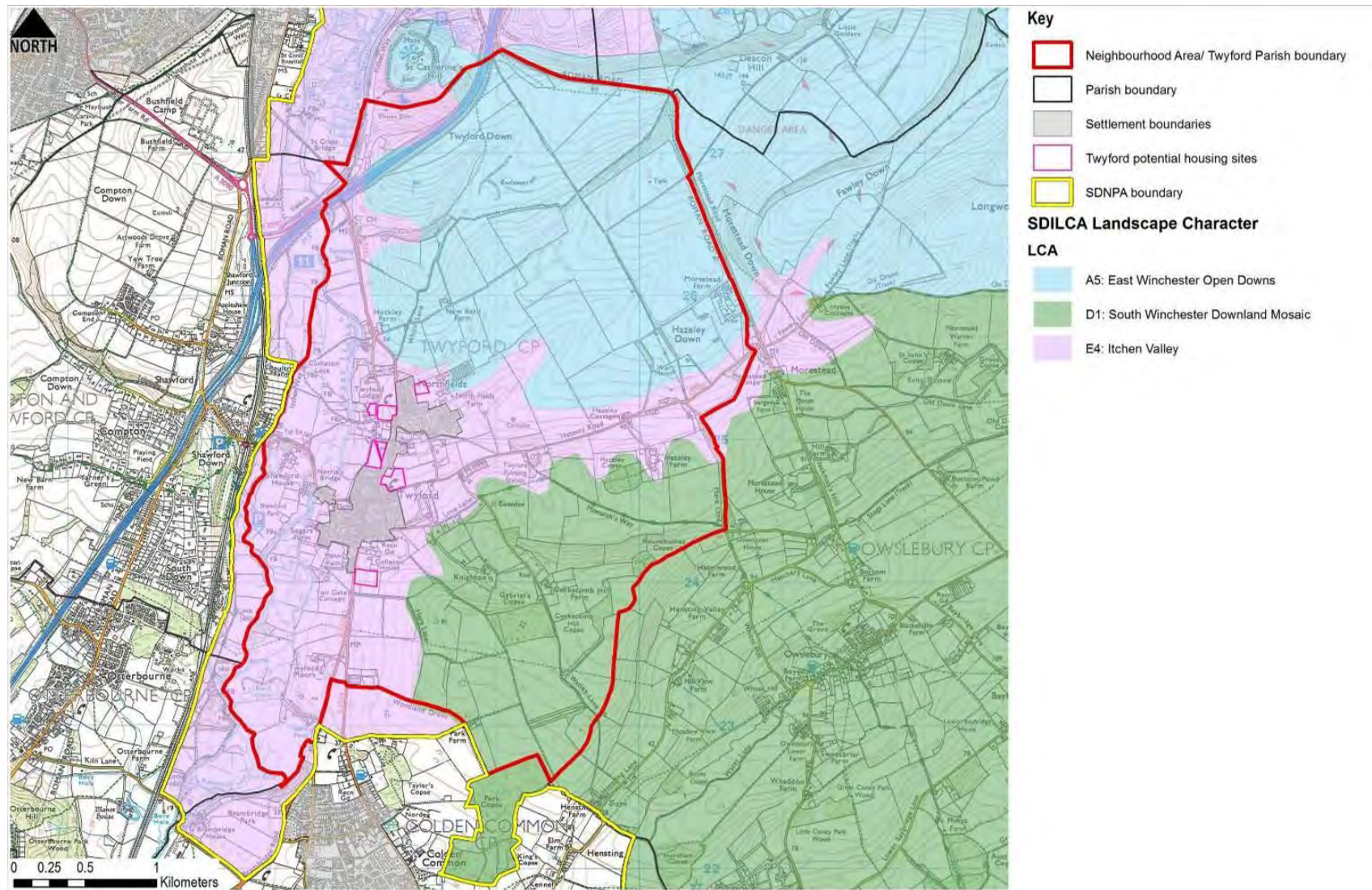


Figure C Historic Designations

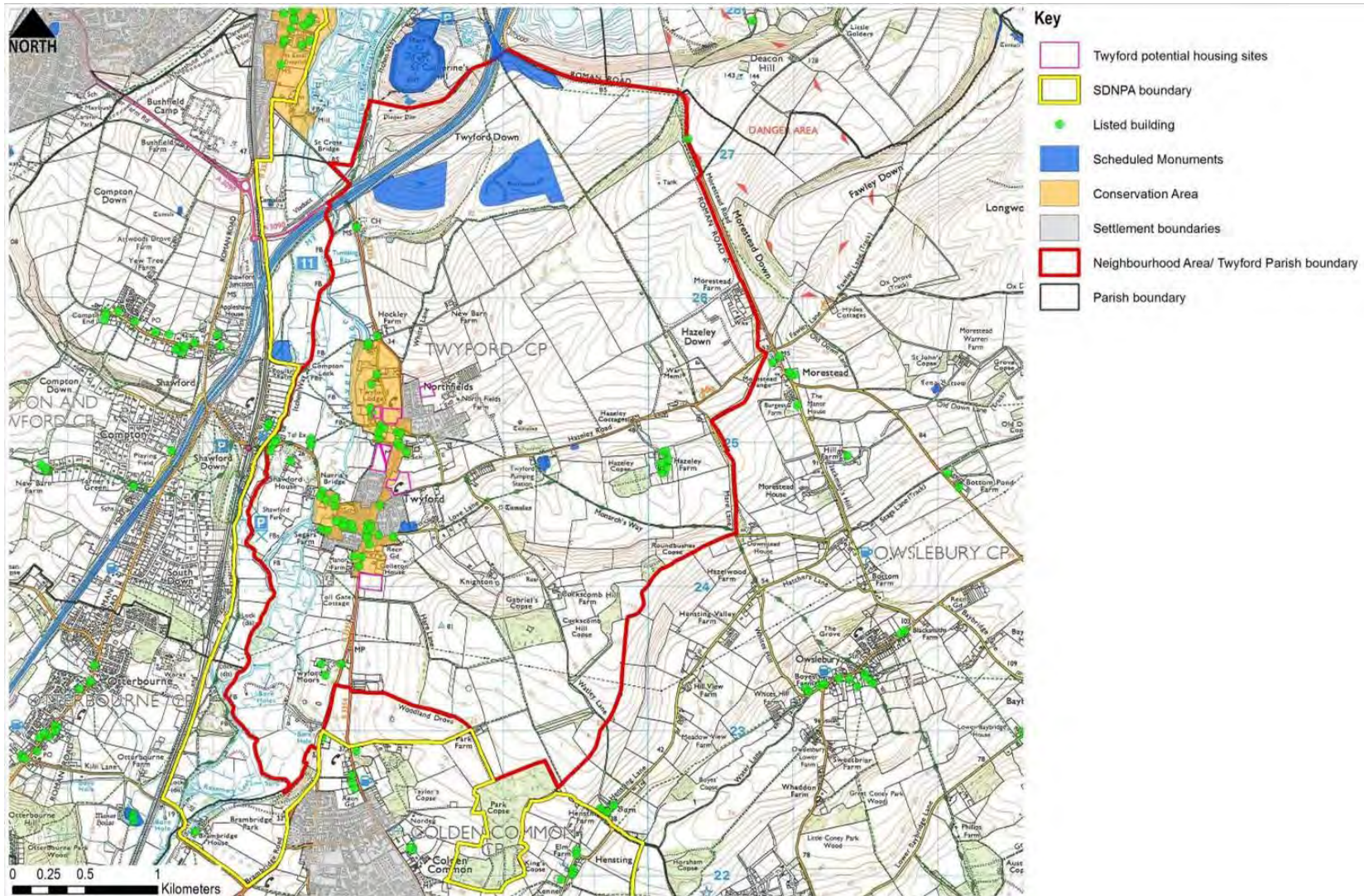


Figure D Ecological Designations

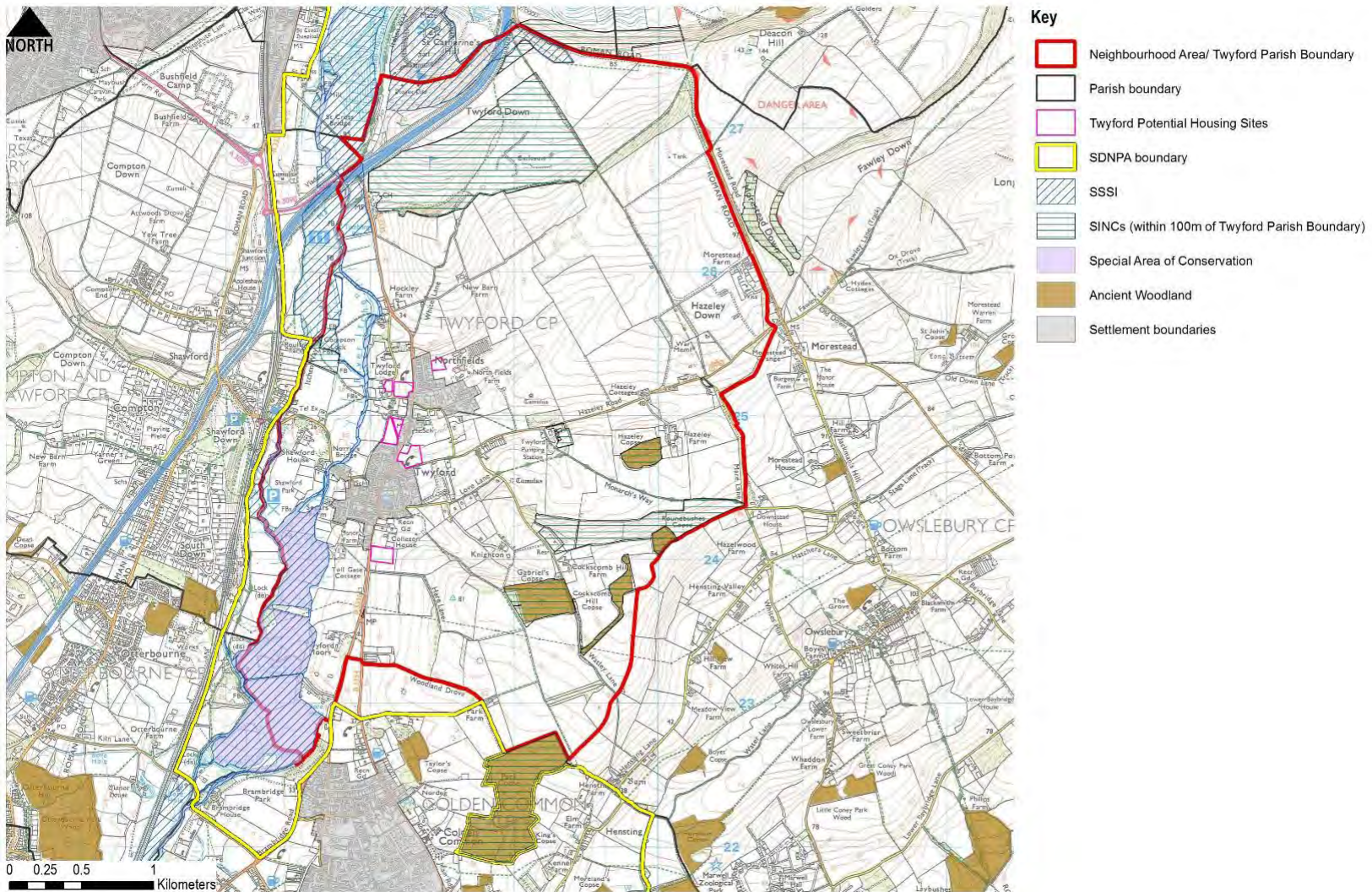


Figure E Access

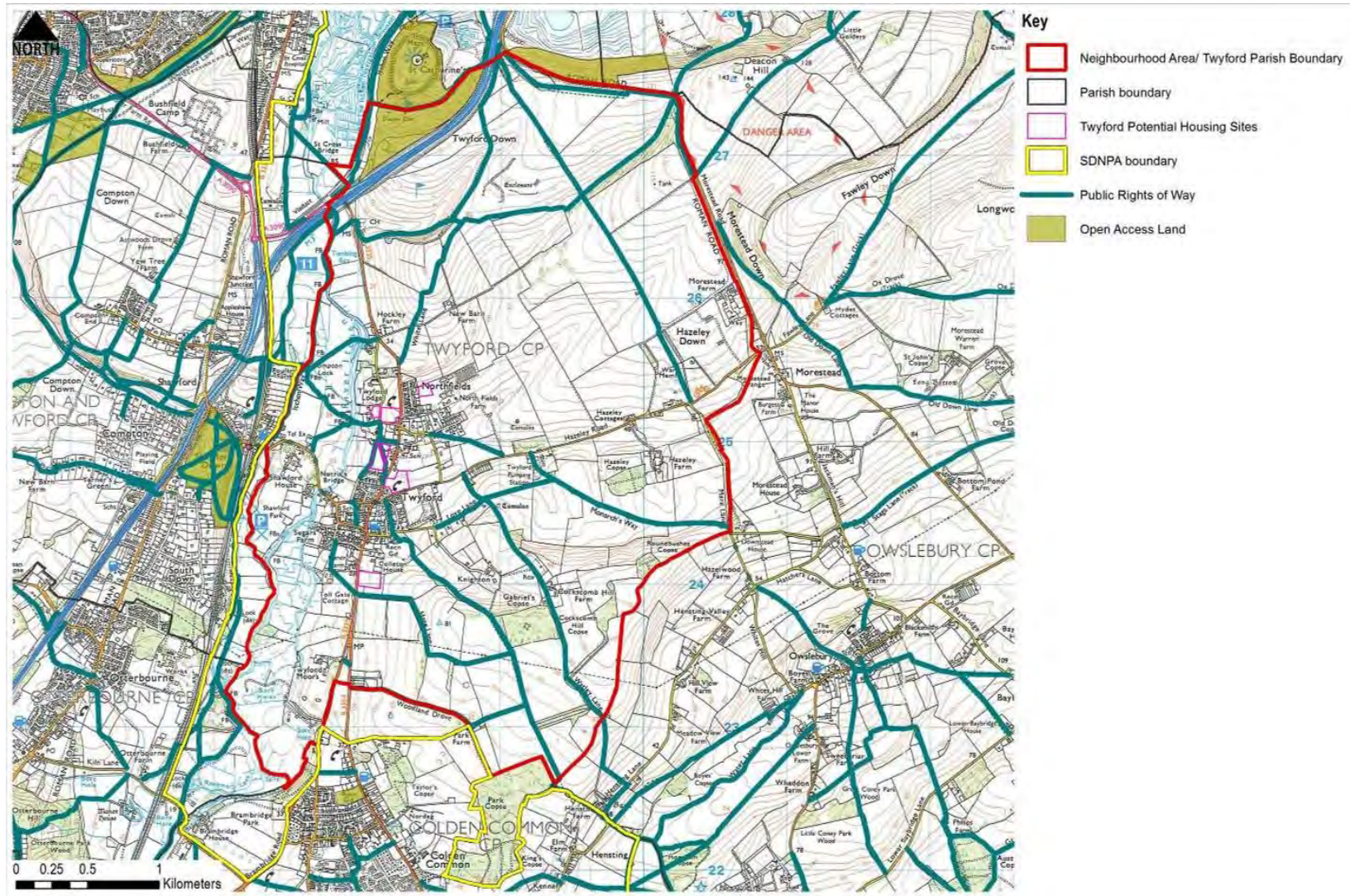


Figure F Flood Map

