

POLK NEWS-SUN



VOL. 89 NO. 16

Wednesday, April 17, 2019

www.yoursun.com/polk \$1.00

An Edition Of The Sun

BARTOW • LAKE WALES • FORT MEADE • FROSTPROOF



Learning the ropes

Polk County's two newest County commissioners reflect on their first six months on the job.

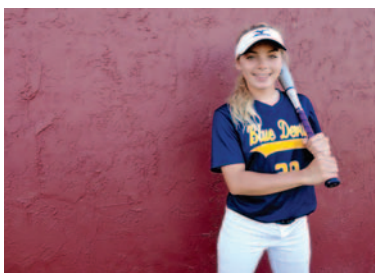
PG 3



Residence for hope

House of Hope, a transitional home for women who were incarcerated, opened in Polk County last week.

PG 4



Standout senior

Winter Haven High senior infielder Alexandra Dilts is having a strong season for the Blue Devils.

PG 13

Good morning to:
Clarence Meeks
Thanks for reading!



8 0 4 8 7 9 3 9 4 0 3 7



PHOTO BY STEVEN RYZEWSKI

The saga of the Thompson and Company Cigar Factory continued recently with a report presented to the Bartow City Commission.

Report suggests that renovations to cigar factory, though costly, could be boon for Bartow

By JEFF ROSLOW
Contributing Writer

BARTOW – A study of the Thompson and Company Cigar Factory suggests that much can be done on the two-acre site — provided there is \$4-\$6 million available for extensive renovations.

The study was done by GAI Consultants, Inc. on behalf of Gregory Fancelli, who has spoken with Bartow City Commissioners on a number of occasions about the possibilities to develop the site. The findings of the study were shared earlier this month with the commission.

“Imaginative new uses have to be found for old buildings at critical points in their life or they will be lost,” the report concluded. “In

this case, a specific and functionally viable option has been presented. Projects of this kind require committed and resourceful people champion their implementation.”

The report said that the building, if restored, “would have extraordinary character” and that “... the overall anticipated program is easily distinguished from many public and private facilities in the general area, competing for similar activity and business.”

The six-page summary of the building and property included artists renderings suggesting layouts for property. The sites each had an event lawn, a pavilion with parking and trees outlining a refurbished main building. The building itself could include a restaurant or a bar.

RENOVATIONS | 4

Suspect in Haines City triple murder surrenders to police

By STEVEN RYZEWSKI
Executive Editor

Ernst Cherizard, the suspect in the shooting deaths of two women and a 6-year-old girl, turned himself in to the Haines City Police Department after 2 p.m. April 14.

Six-year-old Elizabeth Frenel was the third and final victim to succumb to her injuries. Elizabeth was pronounced dead at an Orlando hospital before 11 p.m. Saturday, April 13, after suffering gunshot wounds to the temple, face and arm the night before.

According to police reports, the three victims were fatally shot before 7:15 p.m. Friday, April 12, at the Citrus Ridge Apartments in Haines City. Eli Junia Normil, 23, and Nicole Guillume, 48, were pronounced dead at the scene. Elizabeth is the daughter of Normil.

A statement from the Haines City Police Department said that Normil and Cherizard were in a relationship and have two children together.

MURDER | 4



PHOTO PROVIDED

Ernst Cherizard surrendered himself to Haines City Police Sunday, April 14.

Highland Homes
The value leaders.

NEW Homes from the \$170's
Personalized to Your Style
Neighborhoods Near You!

FIND YOUR NEW HOME AT: www.HighlandHomes.ORG • (863) 797-4999

CALENDAR



Bartow Ford Easter Egg Hunt

When: April 20, 2019 | 10 a.m.

Where: Bartow Ford

2800 U.S. Highway 98 N., Bartow

Bartow Ford Company invites the community to join them at their dealership for their first-ever Easter Egg Hunt. The hunt will begin promptly at 10 a.m. and end at 1 p.m. Over 5,000 stuffed eggs – some will include toys, others will include candy – will be placed in the designated areas at the dealership. Additionally, food vendors will be on hand selling lunch, snack and beverage options. Children who attend will enjoy a balloon artist – and, of course, the Easter Bunny will on hand!

Architectural Tour

When: April 20, 2019 | 11 a.m.

Where: Polk County History Center

100 E. Main St., Bartow

Join us for an architectural tour of the Polk County History Center and learn about neoclassical architecture, the construction of the building and the stories behind the iconic Old Polk County Courthouse. This month's tour features special emphasis on the beautiful tile floor. The architectural tour is at 11 a.m. on the third Saturday of each month.

Free Water Ski Show

When: April 20, 2019 | 5 p.m.

Where: Lake Silver at Martin Luther King Jr. Park

199 E. Lake Silver Dr. NE, Winter Haven

Spring is in the air — and so is the high-flying delta wing kite! Come join the Cypress Gardens Water Ski Team for this free show on Lake Silver. Concessions are available and attendees are encouraged to bring their own lawn chairs. More info at cypressgardenswaterski-team.com.

California Toe Jam

When: April 20, 2019 | 7 p.m.

Where: Ramon Theater

15. E. Wall St., Frostproof

Many residents of Florida's Heartland consider California Toe Jam to be the area's most well-loved good-time oldies band. Their family-friendly shows have brought smiles to countless faces over the last three decades.

Tickets are \$20 for general admission. More information at RamonTheater.com.

Easter Sunrise Service

When: April 21, 2019 | 7 a.m.

Where:

Bok Tower Gardens

1151 Tower Blvd., Lake Wales

Bok Tower Gardens will present the 93rd annual Easter Sunrise Service on Sunday, April 21 at 7 a.m. with free admission from 6 a.m. to 8 a.m. An annual tradition, worshipers are invited to experience the majesty of the sun rising over the horizon atop Iron Mountain. Accessible parking, shuttle service, and seating for guests will be available. Donations are suggested.

Easter Celebration and Egg Hunt

When: April 21, 2019 | Noon

Where: Tanners Lakeside

1006 Lake Howard Dr. SW, Winter Haven

Come to Tanners Lakeside for music, crafts for the kids, good food and much more! The Broke will be performing live from 2 p.m. to 6 p.m. Festivities start at noon.

Bartow Adult Concert Band

When: April 21, 2019 | 2:30 p.m.

Where: Bartow Civic Center

2250 S. Floral Ave., Bartow

Free concert. As guest conductor, Mark Thielen will direct the "Light Cavalry" Overture by F. Von Suppe and Arr. by Henry Fillmore. The Bartow Adult Concert Band is under the direction of Phil Wharton.

Basic Book Repair Class

When: April 23, 2019 | 10 a.m.

Where: Lake Wales Public Library

290 Cypress Gardens Ln., Lake Wales

In celebration of Preservation Week, the Lake Wales Public Library will host its Basic Book

Repair Class. The 90-minute class will include an overview of the parts of a book and the difference between preservation, restoration and conservation. Participants will learn how to properly repair torn pages and broken spines. They will understand the tools needed to repair a book correctly. This class is free, but limited to 10 people. Registration is required. Register by calling (863) 678-4004, ext. 221, or visit the library.

Medicare 101

When: April 25, 2019 | 10:30 a.m.

Where: FWH & Associates

415 E. Main St., Suite 102, Bartow

Get the information you will need to build a healthy future. If you'll be eligible for Medicare soon, that means you have choices to make. It's natural to have questions and it's important to understand your health-care options. Join Linda Carew for a free informational seminar. Other classes will take place May 9 and May 23. Call (863) 537-6686 for more information.

Johnny Cash & Crew

When: April 26, 2019 | 5 p.m., 8 p.m.

Where: Lake Ashton Clubhouse

4140 Ashton Club Dr., Lake Wales

Part of the Lake Ashton Series, this show will be a musical tribute inspired by famed rock 'n' roll icons Johnny Cash, Jerry Lee Lewis, and Carl Perkins with the Brass Heart Band. More information at theatrewinterhaven.com.

PUBLIC NOTICE

CITY OF BARTOW, FLORIDA

Notice is hereby given that the City of Bartow, Florida will convene a Public Meeting of its Professional Services Evaluation Committee to review responses to RFQ # CM 2017-01 and discuss preliminary competitive selection preference rankings. The Public Meeting will be held at 2:00 P.M., Tuesday, April 23, 2019 at City Hall, 450 North Wilson Avenue, Bartow, Florida 33830. During the Public Meeting, the Professional Services Evaluation Committee may conduct public discussions with, or receive public presentations from, select professional service firms pursuant to the Consultants' Competitive Negotiation Act.

The Professional Services Evaluation Team may continue the Public Meeting to other dates and times as it deems necessary. Interested parties are advised that the date, time and place of any continuation of this Public Meeting, and of any additional future continuations, may be announced orally without any further published notice.

If a person decides to appeal any decision with respect to any matter considered during this meeting, he or she will need a record of the proceedings, and, for such purpose, he or she may need to ensure that a verbatim record of the proceedings is made, which record includes the testimony and evidence upon which the appeal is to be based.

If you have a disability and need accommodations for this Public Meeting, or you require foreign language translation services in order to participate in this Public Meeting, please contact the City of Bartow City Clerk's Office by telephone at (863) 534-0100 or in writing at City Clerk, City Hall, 450 North Wilson Avenue, Bartow, Florida 33830 at least two (2) days before the event. If you are hearing or voice impaired, call Florida Relay Service at 711.

POLK NEWS-SUN

Polk News-Sun (USPS 437320),
an affiliate of D-R Media & Investments, LLC
is published weekly (on Wednesday) by the Polk News-Sun,
99 3rd St. NW, Winter Haven, FL 33881
Periodicals Postage Paid at Lakeland, FL
Phone (863) 533-4183 • www.yoursun.com/polk
POSTMASTER: Send address changes to
Polk News-Sun,
99 3rd St. NW,
Winter Haven, FL 33881

SUBSCRIPTION PRICES

IN-COUNTY MAIL	6 Months....\$28.82	1 Year....\$47.99
OUT OF COUNTY	6 Months....\$36.82	1 Year....\$59.20
OUT OF STATE	6 Months....\$40.02	1 Year....\$64.80

Classified Ads: aswain@scmginc.com

Legals: legals@scmginc.com

Obituaries: lbelue@scmginc.com

News or Events to: news@scmginc.com

VP & Group Publisher

Timothy D. Smolarick
813.951.0450

Executive Editor

Steven Ryzewski
sryzewski@scmginc.com

General Manager

Kim Edwards
kedwards@scmginc.com

Office Manager

Lora Belue
lbelue@scmginc.com

COUNTY



Six months in, new county commissioners reflect on learning curve

By CATHY PALMER
Contributing Writer

Polk County's two newest county commissioners hit the ground running six months ago, taking office within minutes of taking their oath. Six months later, both Rick Wilson and Martha Santiago say they are still in the midst of a steep learning curve.

"I knew Polk County was big and the county was involved in a lot, but it's almost overwhelming how much there is to learn," said Santiago, who took office in November.

Santiago represents District 4, which includes most of Winter Haven, Dundee, Lake Hamilton, Davenport and stretches north, through the burgeoning northeast area of the county around Four Corners, as well as east to Poinciana at the county line.

Her comments were echoed by Wilson, who had a month's lead time over Santiago, taking office via gubernatorial appointment and a primary victory in October after term-limited Commissioner Melony Bell opted to resign to pursue her successful campaign for the state house.

"I'm still in information overload," Wilson, a Bartow native, said. "Polk County is such a big operation and the county takes care of so much."

Wilson's District 2 is the largest in land area and includes the cities of Bartow, Fort Meade and Frostproof. The district stretches east-west from county line to county line.

Both Wilson and Santiago are relatively new to the political scene, but Santiago had a leg up in that area — she ran for the commission in 2006, but didn't make the cut back then. In November, she claimed the seat held for eight years by Todd Dantzler, who was termed out.

"I'm a quick learner -- and it's a good thing," Santiago said. "There is so, so very much information to take in, there are so many departments that handle so many different areas. It's hard to wrap your head around it all at first, but I'm feeling more comfortable every day."

Both commissioners have broad experience in management, with Santiago managing segments of Polk State College, where she was provost, and Wilson handling his family's ranch and heavy equipment business following a 13-year career as a NASCAR race driver.

While the fledgling commissioners are still in the getting-up-to-speed mode, both maintain that their experiences in administration, business operations and in the communities they serve have given them the tools to make decisions right out of the gate.

"If I'm not sure about an issue, I ask questions," Santiago says. "I'm not going to vote on something I don't understand and get what the impacts will be."

Wilson adds, "I do very little talking, but I will ask questions until I'm comfortable making an informed decision. ... It's going to take time, but I'm learning more every day and feeling more comfortable."

Both commissioners say that economic growth and stability issues are constant countywide and that public safety is their priority.

"We have to protect our people and see that they have the best services possible. They must have enough law enforcement, enough fire and rescue and enough utilities," Santiago explains. "Those are our main priorities."

"Transportation is an issue too," says Wilson. "We're already behind on that and we can never get it done in time. By the time we get things done, we're already

planning on how to improve what we've just done."

While Wilson's district is most of the southern half of the county, he says he doesn't look at things from a district basis.

"I look at the whole county," Wilson said. "If somebody calls about a problem in another district, I do what I can to help them."

Right now, the commissioners are tackling their first budget preparation.

"I've been doing a lot of homework and learning a lot," Santiago continues, "\$1.5 billion is a lot of money, so I'm diligent about it. It's hard to determine who needs it most."

Wilson isn't quite so shy about the county's mammoth budget.

"When I drove in NASCAR, I was exposed to corporations with that kind of money, so it wasn't shocked at the big numbers," he says. "But we also break it down by departments and analyze it that way."

Both commissioners said they have had to tighten up their time management since taking office. Additionally, Santiago says just getting around is an issue.

"My office is here in Bartow, but some days I have to go to Davenport or Poinciana and it's over an hour's drive," she said. "It can be challenging."

"Fortunately, we have great staff and they have all been willing to help us out and things are getting easier," Wilson added.

"It's been an exciting six months," Santiago adds, "And I really love this job and serving people."

State Attorney publishes annual report

By CHARLES A. BAKER III
Staff Writer

POLK COUNTY – State Attorney Brian Haas published the 2019 Office Report this past Friday, April 12. The report highlights some of the work prosecutors of Florida's Tenth Judicial Circuit completed over the past calendar year.

Ninety assistant state attorneys, 140 investigators and numerous clerical staff handled 43,659 cases in 2019, taking 322 cases to a jury and collecting \$7.1 million in child support.

"Last year was a very eventful year," Haas said. "While our circuit enjoyed another year of record low crime rates, we still were faced with many challenges. Our prosecutors, investigators, and staff remained very busy throughout the year, as we worked hard to serve our citizens and prosecute those who victimize them."

Former Auburndale Police Chief and Bartow High School graduate Chris Nelson was hired as State Attorney's Office Executive Director in August.

Two death sentences were handed down last year, one to Benjamin Smiley of Lakeland and the other to Johnathan Alcegaire of Miami.

More than 7,000 child support cases were handled.

Hundreds of juveniles who were arrested last year had their criminal history minimized for committing eligible, non-serious criminal acts through a diversion program created in 2017. Some adults entered other diversion programs last year for charges such as possession of cannabis, petit theft, worthless check and dumping.

Many youth participated in the Youth Mock Trial summer program for teens interested in learning more about a career as a prosecutor. Haas led multiple events with seniors, teaching them how to avoid fraud.

Three former prosecutors were sworn in as judges last year: former County Court Director Stacie Kaylor, Hardee County Director David Stamey and former Homicide Division Chief Hope Pattey.

On March 7, Haas launched the SAO Inaugural Citizens Academy, a nine-week program that teaches local residents the ins and outs of prosecutorial work.

Multiple high profile cases were also documented. To read the full report, check out www.sao10.com.

JOIN THE BEST TEAM IN STEEL
NUCOR FLORIDA

TOWN HALL & CAREER FAIR

COME LEARN ABOUT NUCOR
We are looking for motivated teammates ready to take on new challenges while building their careers with North America's most diversified steel and steel products company. Nucor offers industry-leading pay and benefits, and has been recognized as one of the nation's best employers.

AVAILABLE POSITIONS
Entry Level Production
Rolling Mill Shift Supervisor
Electrical Lead
Mechanical Lead
MRO Warehouse Lead
High Voltage Electrical Technician
Melt Shop Shift Supervisor

WAUCHULA, FLORIDA
April 23 • 5:30 p.m. - 8:30 p.m.
Hardee Civic Center
507 Civic Center Dr.

LAKELAND, FLORIDA
May 7 • 5:30 p.m. - 8:30 p.m.
Polk State College
Lakeland Campus
Building LTB Room 1100

BARTOW, FLORIDA
May 21 • 5:30 p.m. - 8:30 p.m.
Polk State College
Advanced Technology Center, Room 1104

NUCOR HIGHLIGHTS

- Safety leader in the industry
- Competitive pay, including bonuses and profit-sharing
- No-layoff practice
- No industrial experience required

Learn more and apply today at www.nucor.com/careers. No Phone Calls Please!

Nucor Steel Florida, Inc. • 22 Nucor Drive • Frostproof, Florida 33843

ON THE COVER

RENOVATIONS

FROM PAGE 1

The estimated cost to fix the building could run as high as \$350-\$400 per square foot and that comes after Fancelli, a potential developer, told commissioners it would cost \$1.3 million to redo the roof. Based on GAI's summary, the total price of restoring the property could run as high as \$6 million.

Issue divides commission

The presentation of the GAI report was the latest in a series of overtures between Fancelli and the city. Fancelli had expressed interest in possibly buying the project, but recently withdrew his interest.

Last month, though, Fancelli said he would provide the city with the report and would be willing to resume talks once the report was completed. What to do with the cigar factory property has been an ongoing issue for the city and currently the commission is divided on the matter.

Commissioners Trish Pfeiffer and James Clements have voiced a desire to save the structure. Vice Mayor Billy Simpson has said he is not in favor of spending more taxpayer money on it and Commissioner Scott Sjoblom has expressed similar sentiments unless a strong plan is presented. Mayor Leo Longworth has said he is wary of putting more taxpayer money toward the project, but has left open the possibility he can be convinced of doing something.

Simpson said the report relays to him what he and his colleagues already knew, adding he was disappointed no fi-

nancial analysis was included.

"We understand what it takes to develop it and what its usage could be," Simpson said. "They've made their point, but we have to have a financial analysis and I thought we'd get one out of this."

Pfeiffer said the report backs up her assertion that the building could be an asset to the city.

"It says everything I've been saying all these years," Pfeiffer said. "It's a gem of a building if it were restored."

Pfeiffer said it would be best to hear more from GAI on suggestions of what to do with the building and land. The choice the city currently faces is saving and investing in the cigar factory or tearing it down. Last summer, city staff gave commissioners an estimated cost of between \$85,000-\$100,000 to tear it down.

Pfeiffer cited other local municipal and county projects, including the Gem Theater in Mulberry and Winter Haven's tennis facility. She also pointed out that the field house Winter Haven is constructing at its Chain of Lakes Complex includes contributions from the county.

"The county is giving Winter Haven \$10 million for a field house," she said. "How about going to the county and saying 'we'd like to do this — can we get money for this?' We are the city where history comes to life. Two blocks down the road we have the Brown House and we pay \$50,000 a year to run (it)."

Pfeiffer added, "We're going to have to wait for a presentation with GAI. We have to hear from them. The building is important. Then we can get to the next question: 'How do we go forward?'"

The city acquired the building, located at North Third Av-

enue and East Davidson Street, in 2012. Since then, the city has tried to find a private investor for the building, which was originally built in 1925.

Since acquiring the cigar factory, more than \$200,000 has been spent on upkeep.

Comparisons

The GAI study looked at similar facilities, public and private, in Sanford, Winter Haven, Lakeland, Kissimmee, Oviedo and Ocoee.

An advantage to the cigar factory, which is about 15,000 square-feet, is that it is larger than most venues in the area. In the analysis, GAI looked at other nearby facilities that would compete with the cigar factory for events. It cited The Barn at Lazy B. Ranch, Harmony Haven, the Club at Eaglebrook, Blue View Event Barn and Venue 650 — each capable of holding 175-400 people.

Fees for those venues ranged from a few hundred dollars to more than \$4,000 per event.

The report suggested smaller communities get more use from a rebuilt historic structure and noted that the city does not really have a similar facility of its own in the town's core.

As to whether or not it could be profitable, GAI Consultants said there is no guarantee, but that the building could have other value.

"Obviously without doing detailed financial analysis driven by a preferred business model, we cannot opine on actual feasibility," the report said. "That said, from what we see of the usages and character of the facilities identified is that they all fulfill important community, civic and social functions."

MURDER

FROM PAGE 1

though Elizabeth is not Cherizard's child. Guillume is a relative.

"Because of Cherizard's cowardly actions — and they are nothing short of cowardly — a family now has to bury three members, including a young child who had her whole life in front of her," Haines City Police Chief Jim Elensky said.

Elizabeth Frenel was a student at Alta Vista Elementary in Haines City.

Initially, Cherizard fled the scene Friday night in a 2011 burgundy Nissan Altima belonging to Normil. The suspect headed toward South Florida, causing a large manhunt, before eventually deciding to turn himself in.

In the early hours of Saturday morning, Cherizard took to Facebook to acknowledge the incident and closed by apologizing to his children: "Daddy is so sorry with all my heart cuz I can't believe this happened."

"Despite his indicated remorse, make no mistake about it — this man is a monster," Elensky said. "To consciously shoot three innocent, unarmed females is nothing less than being a coward. To shoot a truly innocent 6-year-old child is disgusting and beyond comprehension. Moreover, he shot the child at least three times, once being in the head. Our thoughts and prayers are with the family and the first responders who did everything they could at the scene. They also must live with this tragedy."

Records indicate show Winter Haven Police have previously arrested Cherizard on a domestic battery charge.

The investigation is still ongoing as police try to piece together the series of events that motivated the incident.

On Monday, Cherizard appeared before a judge and the judge ordered that he be held in jail without bond. A decision will be made in the coming days by the state attorney's office on whether to pursue the death penalty in the case.

House of Hope celebrated its ribbon cutting last week

By ANITA TODD

Contributing Writer

WINTER HAVEN — House of Hope may have held its ribbon cutting April 11, but the transition house has existed for years in the prayers of co-founders Jana Jones and Sherri Nicely.

"For me, House of Hope started in a prayer room eight years ago, when I had a vision of the home," Jones said. "I drew a stick house on a piece of paper and that's what I named it."

House of Hope is designed to house women right out of prison, providing a variety of services, and will welcome its first resident this month. The facility will offer programs focused on job skills, job placement, tutoring, financial stewardship, parenting classes, counseling and mentorship — among other things — for its participants.

"House of Hope is for women who are just released from prison and are ready to start work," Jones said.

For the pair of co-founders, this is the first house of what they hope will become many, with each home serving a different purpose.

To be considered for residency at House of Hope, women must complete an extensive application and cannot be taking psych drugs or have been convicted of a violent crime.

Although the vision started years ago, it has been only 13 months since the two ladies met for lunch and began to share their vision with one another. It was on that day back in March of 2018 that Jones and Nicely discovered they both felt called to open a transition home for women.

Everything fell into place from there — from community approval to loan approval to finding the perfect home to furnishing that home. Jones and Nicely say they patiently waited for the perfect fit, eventually finding it with a property at 1890 Havendale Boulevard.

"Through Jesus Christ, we are providing these things," Nicely said. "We know the hand of God is on this to have been able to accomplish everything we did in such a short time.

Meanwhile, all types of donations were pouring in, includ-

ing monetary ones totaling \$46,000 — the down payment needed for the residence. Jones said another donor has offered to make monthly payments. Another friend from high school donated \$6,000 in landscaping while someone else dropped off a set of Macy's china on the doorstep.

The home has been decorated by different individuals, some even choosing to "adopt" an entire room to put a personal touch on an inviting living space.

"It's been fun watching people catch the vision and want to know what they can do," Jones said.

More sponsors are needed, though, as the pair would like to pay off the home as soon as possible, freeing up funds to run the operation on a day-to-day basis. Those who would like to help can also adopt residents and help with their monthly expenses. Although appreciated, House of Hope does not need clothes at this time.

Eventually, the residence will become home to six women at a time and staffed by a volunteer counselor 24 hours a day. House of Hope's founders are also hoping to obtain grants to help with finances.

Jones and Nicely say they plan to also open a crisis unit for individuals who need immediate housing coming out of a dangerous situation.

House of Hope is new, but Jones and Nicely are not when it comes to helping the community. For example, Jones has opened her own home to addicts in need of help while detoxing for years.

"We have helped place women in other homes and having been doing outreach in the community and in the Polk County Jail," Nicely said.

The pair said they don't consider themselves special to have opened House of Hope, but rather that they were following a calling.

"We just happen to be two women who said 'yes' to God," Jones said. "We are His hands and feet."



Polk County School Board discusses charter school applications, denying 2

By CHARLES A. BAKER III
Staff Writer

POLK COUNTY – The Polk County School Board discussed four recent charter school applications during a work session April 9.

Of the four charter school applications received for review, staff with two charter school organizations withdrew their applications and the charter review committee recommended the board deny the other two applications by a combined 23-1 vote.

The four applicants were from American Classical Charter Academy, Bridgeprep Academy Polk County, Mi Escuela Montessori and Navigator Academy of Leadership. Staff with the latter two organizations withdrew their applications.

During the past several school board meetings, several board members have made statements indicating they believe state funding of charter schools is negatively affecting state funding of traditional zoned public schools.

Board members Billy Townsend and Sarah Fortney have been especially vocal on the matter.

Townsend said he felt the Bridgeprep Academy Polk County application process felt more like a real estate deal than helping people to start a charter school. In reference to American Classical Charter Academy, Townsend said the school was modeled after a charter

school in Naples with staff accused of criminal fraud.

“I think it’s important for the public to know they (charter schools) have very powerful lobbying support,” Townsend said in reference to charter school lobbyists in Tallahassee.

In office since the election in November, Fortney has made multiple social media posts expressing concern about charter school funding restricting funding of zoned public schools.

Polk County School Board Chair Lynn Wilson has repeatedly said he does not oppose charter schools on principle. He recently told the Sun that the board cannot afford to give teachers a raise primarily because state regulators mandate how much local leaders can tax local residents. Lynn believes local leaders should be able to raise property taxes to benefit schools, as opposed to leaders in Tallahassee who mandate that taxes remain unchanged annually.

But on April 9, Wilson said funding shortages go beyond millage rate rollback mandates from state legislators. Wilson said northeast Polk County needs more schools but that there are not enough resources.

“That’s the challenge,” Wilson said. “We don’t have those resources. Whether we like it or not, the state provides those resources through charter schools.”

Polk County Schools Lawyer Wes Bridges said that when charter schools get denied locally, they often appeal to state legislators and win.

Polk County School Board members Lori Cunningham suggested school staff, working with the media, ought to help get the word out that state legislators were not appropriately funding traditional zoned public schools.

When the school board members were done debating, Polk County Schools Superintendent Jacqueline Byrd recommended that the American Classical Charter Academy application be denied because their funding was too reliant on bank loans. Byrd recommended the Bridgeprep Academy application be approved and that differences between the parties be worked out in pending contract negotiations.

Recently, the Sun published a story announcing that Navigator Academy would be opening in the fall in Davenport. The Navigator Academy application associated with this report is in reference to a possible second Navigator Academy according to Melissa Aguilar, the school director of communication.

Aguilar said their first school is still on schedule to be open by fall.

Get your subscription today!

863.533.4183

This is more than great rates

This is more savings for wherever you're going.

**WELLS
FARGO**

Platinum Savings Account

2.10%

Annual Percentage Yield for 12 months with new money deposits of at least \$25,000 and a minimum daily account balance of \$25,000 or more¹

Guaranteed Fixed-Rate CD

2.40%

Annual Percentage Yield for an 11-month term with new money deposits of at least \$25,000²

Talk to a banker for details. Offer expires May 31, 2019. Business owner? Ask about our business savings rates.

Offers available in AR, CT, DC, FL, GA, MD, MS, NC, NJ, NY, SC, TX and VA. *Portfolio by Wells Fargo*[®] customers are eligible to receive an additional bonus interest rate on these accounts.³

1. To qualify for this offer, you must have a new or existing Platinum Savings account and enroll the account in this offer between 03/25/2019 and 05/31/2019. This offer is subject to change at any time, without notice. This offer is available only to Platinum Savings customers in the following states: AR, CT, DC, FL, GA, MD, MS, NC, NJ, NY, SC, TX and VA. In order to earn the Special Interest Rate of 2.08% (Special Rate), you must deposit \$25,000 in new money (from sources outside of Wells Fargo Bank, N.A., or its affiliates) to the enrolled savings account and maintain a minimum daily account balance of \$25,000 throughout the term of this offer. The corresponding Annual Percentage Yield (APY) for this offer is 2.10%. The Special Rate will be applied to the enrolled savings account for a period of 12 months, starting on the date the account is enrolled in the offer. However, for any day during that 12 month period that the daily account balance is less than the \$25,000 minimum, the Special Rate will not apply, and the interest rate will revert to the standard interest rate applicable to your Platinum Savings account. As of 02/15/2019, the standard interest rate and APY for a Platinum Savings account in AR, CT, DC, FL, GA, MD, MS, NC, NJ, NY, SC, TX and VA with an account balance of \$0.01 and above is 0.05% (0.05% APY). Each tier shown reflects the current minimum daily collected balance required to obtain the applicable APY. Interest is compounded daily and paid monthly. The amount of interest earned is based on the daily collected balances in the account. Upon the expiration of the 12 month promotional period, standard interest rates apply. Minimum to open a Platinum Savings account is \$25. A monthly service fee of \$12 applies in any month the account falls below a \$3,500 minimum daily balance. Fees may reduce earnings. Interest rates are variable and subject to change without notice. Wells Fargo may limit the amount you deposit to a Platinum Savings account to an aggregate of \$1 million. Offer not available to Private Banking or Wealth customers. 2. Annual Percentage Yield (APY) is effective for accounts opened between 03/25/2019 to 05/31/2019. The 11-month New Dollar CD special requires a minimum of \$25,000 brought to Wells Fargo from sources outside of Wells Fargo Bank N.A., or its affiliates to earn the advertised APY. Public Funds and Wholesale accounts are not eligible for this offer. APY assumes interest remains on deposit until maturity. Interest is compounded daily. Payment of interest on CDs is based on term: For terms less than 12 months (365 days), interest may be paid monthly, quarterly, semi-annually, or at maturity (the end of the term). For terms of 12 months or more, interest may be paid monthly, quarterly, semi-annually, or annually. A fee for early withdrawal will be imposed and could reduce earnings on this account. Special Rates are applicable to the initial term of the CD only. At maturity, the Special Rate CD will automatically renew for a term of 6 months, at the interest rate and APY in effect for CDs on renewal date not subject to a Special Rate, unless the Bank has notified you otherwise. 1,2. Due to the new money requirement, accounts may only be opened at your local branch. Wells Fargo reserves the right to modify or discontinue the offer at any time without notice. Minimum new money deposit requirement of at least \$25,000 is for this offer only and cannot be transferred to another account to qualify for any other consumer deposit offer. If you wish to take advantage of another consumer deposit offer requiring a minimum new money deposit, you will be required to do so with another new money deposit as stated in the offer requirements and qualifications. Offer cannot be combined with any other consumer deposit offer, except the Portfolio by Wells Fargo \$500 offer, available from March 25, 2019 until May 31, 2019. Offer cannot be reproduced, purchased, sold, transferred, or traded. 3. The Portfolio by Wells Fargo program has a \$30 monthly service fee, which can be avoided when you have one of the following qualifying balances: \$25,000 or more in qualifying linked bank deposit accounts (checking, savings, CDs, FDIC-insured IRAs) or \$50,000 or more in any combination of qualifying linked banking, brokerage (available through Wells Fargo Advisors, LLC) and credit balances (including 10% of mortgage balances, certain mortgages not eligible). If the Portfolio by Wells Fargo relationship is terminated, the bonus interest rate on all eligible savings accounts, and discounts or fee waivers on other products and services, will discontinue and revert to the Bank's then-current applicable rate or fee. For bonus interest rates on time accounts, this change will occur upon renewal. If the Portfolio by Wells Fargo relationship is terminated, the remaining unlinked Wells Fargo Portfolio Checking or Wells Fargo Prime Checking account will be converted to another checking product or closed.

© 2019 Wells Fargo Bank, N.A. All rights reserved. Deposit products offered by Wells Fargo Bank, N.A. Member FDIC. NMLSR ID 399801

Every ballot mattered in Haines City election decided by two votes

By ANITA TODD
Contributing Writer

HAINES CITY – Saying the race for Seat 1 on the Haines City Commission April 2 was close is an understatement.

In the final tally, just two votes gave newcomer Jayne Hall the victory over two-term incumbent Don Mason.

Initially after the votes were counted on election night, Hall had squeezed by Mason by three votes, 683 – 680. That wasn't the end, though — Florida law dictates that a machine recount must be done if the difference in votes is one half of one percent or less of the total number of votes.

According to Lori Edwards, Supervisor of Elections for Polk County, close results are not uncommon in city elections.

"It's important to realize that recounts are a good thing," Edwards said. "They are a safety valve."

On April 8, Hall and Mason watched as the machine recount was done in the Election Office in Bartow, re-

counting all the ballots.

What they witnessed was a process that saw the recount machine count the results and return — or "outstack" — ballots that need to be set aside for review.

"The outstacks are ballots that must be reviewed and will be counted if the intention was clear," Edwards said. "These are marks that the machine wouldn't understand but that the human eye would."

After the machine recount, Hall had 681 votes to Mason's 680, with three ballots being outstacked. Those ballots were then reviewed by the canvassing board.

The first ballot was deemed a vote for Hall. The second ballot was blank and the third was a write-in vote for a candidate not on the ballot. With those three votes assessed, the final tally had Hall ahead, 682-680.

"On election day, I was already concerned that I may not have done enough (to be elected)," Hall said. "I knew I was going up against a two-term incumbent and it was going to be difficult."

When it was announced that a recount would have to be done, Hall said she prayed that luck be with her.

"I trust the process," she said.

Of 13,816 eligible registered voters in Haines City, only 1,363 cast their ballots. To be eligible to vote for city commissioners, voters must live within the city limits of town.

A native of Michigan, in 2001, Hall and her husband purchased the Palms Hotel and started a business and then moved to Haines City in 2003.

Although she had never been involved personally in politics, Hall said she felt called to run and intended to do so years earlier, but missed the deadline to submit her application.

Hall will begin serving her four-year term on May 2, when she will be sworn in during the Haines City Commission meeting.

Edwards said that she believes the recount in Haines City is a good reminder for everyone to get involved and vote.

"It's worth your time and effort to get out and vote because every vote counts," she said.

Polk County's Building Division to open satellite office for residential permit requests

POLK COUNTY — Polk County Building Division staff announced the opening of a second permitting office for customers' convenience on April 15.

The new office is located at 28039 U.S. 27 in the Dundee Plaza. Staff at this office will assist customers with same-day residential permitting requests. There will be no commercial permit issuance or review at this office.

The office hours will mirror those at the main office in Bartow: Monday through Friday, from 8 a.m. to 5 p.m., and 10 a.m. to 5:00 p.m. on the second and fourth Tuesdays of each month.

Customers must be in the queue with a permit application number by noon for applications that involve plan review and mobile home set-ups, and 1:30 p.m. for all other residential permit requests. Please visit the county's website at www.polk-county.net/building for

more information about office hours and permit requirements.

To apply for a residential same-day permit, customers can start an application online by selecting the online permitting icon, or they can use the kiosks located in the office.

Once the application has been initiated and a permit number has been assigned, customers will bring the permit number confirmation sheet, along with any required supplemental documents, to the office to continue the permitting process.



PUBLIC NOTICE

Notice is hereby given that the City of Bartow is accepting applications for the following voluntary advisory board(s):

- Citizen's Advisory Committee
- Joint Airport Zoning Board (Alternate)
- Municipal Police Officers' Retirement Trust Fund Board
- Zoning Board of Adjustment

To obtain an application or board description contact the City Clerk's Office at (863) 534-0100 ext. 1256 or visit the City Clerk section on the City's website: www.cityofbartow.net

Local News

In Print & Online

www.polknewssun.com
www.winterhavensun.com

NESCO
RESOURCE

Finding good people
should be an opportunity.
Not a problem.

Let Nesco work for you.

Professional, Administrative and
Industrial Services

- Temporary Staffing
- On-Site Management
- Recruiting Process Outsourcing
- Permanent Staffing
- Managed Services

Call Us Today:

(863) 294-1188

371 Cypress Gardens Blvd.
Winter Haven, FL 33880

www.nescosource.com

60
YEARS
OF STAFFING EXCELLENCE

Your Polk County staffing partner
since 1989

With 10 Central Florida locations
and over 100 locations nationwide.





WINTER HAVEN

Families, vendors enjoy Saturday Farmers Market in Central Park

On the second and fourth Saturday of each month, a Saturday Farmers Market is held in downtown Winter Haven at Central Park and families and vendors alike converged on Central Park April 13.

The free event is pet-friendly and included food trucks, antiques, artists, artisan products and local crafts, local fresh goods, kettle corn and much more.

The next event is an addition to the usual schedule: the 5th Annual 863 Local Fi-Art Fest is this Saturday, April 20. For more information on that event, as well as the regularly occurring market on the second and fourth Saturday of each month, visit facebook.com/2ndand4thSaturdayMarketsInDowntownWinterHaven/.

— PHOTOS BY BILL SIEGEL



It was a busy Saturday for vendors at the Farmers Market.



Vendors offered a wide assortment of choices for those attending the market.



Janice and Richard Pealer



Violeta Cabanas and Ilda Guerrero



Kettle corn was a hot commodity at the Winter Haven Farmers Market April 13.



Terry Green and his loyal companion Niko enjoy the festivities.



Ken Ouellette, left, Curtis Johnson, Karen Ouellette, Ryan Johnson and Nicole Johnson had a great time Saturday at the Winter Haven Farmers Market.

**FLORIDA SEMINOLES
POSTCARDS AND PERCEPTIONS**
A traveling exhibit from the
Ah-Tah-Thi-Ki Museum
MARCH 26 - MAY 31, 2019



Special Speaker Presentation by **ANDREW FRANK**
*Modern by Tradition: Innovation and the
Transformation of the Seminole Culture*
Thursday, April 25 @ 6 PM

Florida Humanities Council Visit Central Florida
LAKE WALES MUSEUM
863.676.1759
www.lakewalesfl.gov

City staff, SWFWMD finalize water study agreement

By CHARLES A. BAKER III
Staff Writer

WINTER HAVEN – On April 8, the Winter Haven City Commission and staff with the Southwest Florida Water Management District finalized an amendment to their agreement to study the feasibility of using highly-treated wastewater to recharge the Upper Floridan Aquifer under Winter Haven in the coming years.

The developer of a proposed development called Harmony at Lake Eloise has agreed to have the study conducted on his property. The amendment to the original agreement was necessary because contract negotiations between the city and the developer took more time than was originally budgeted.

Wastewater from the City of Winter Haven's water treatment plant number three would be piped to the property and pumped into the ground. The feasibility study started in January and a final report is tentatively scheduled to be complete by September 2020.

Ground flow modeling is scheduled to start in November.

"It is the hope that this project will help establish partnerships with other future development projects to create multiple water resource benefits in the Winter Haven area, including water supply, lake level management and hydrologic restoration," city documents state.

Experts say there is not enough water in the Upper Floridan Aquifer to meet population growth by 2040. Right now the Polk Regional Water Cooperative has budgeted \$23 million to study the feasibility of using salt water in the Lower Floridan Aquifer to meet this

future demand.

Experts say the cost of making salt water the main source of potable water in Polk County would likely mean future water bills could be as much as four times as they are now.

After building a desalination in the Tampa area, over the past couple of decades, staff working with the City of Tampa have started pumping lots of reclaimed water

into the ground. Some say Tampa leads the nation in this process.

The PRWC board is also studying the feasibility of recharging the aquifer in Polk County using storm water and reclaimed water, but the money budgeted toward this purpose is much less than the amount of money budgeted toward their desalination plans.

City commission proclaims Earth Day, recognizes conservation advocate

By CHARLES A. BAKER III
Staff Writer

WINTER HAVEN – The Winter Haven City Commission recently proclaimed Monday, April 22, as Earth Day and recognized a longtime advocate of conservation.

For around 19 years, Francis Howell-Coleman has been a member of the Lakes Advisory Committee and a member of the Ancient Islands Sierra Club, of which she currently serves as club treasurer.

The city asked her to receive the proclamation.

"All of us who have worked here for decades are so proud of the way the city has evolved into an attractive, walkable, green, shaded community," Howell-Coleman said. "The Chain of Lakes are our largest asset, a place children want to stay. We protect them and do everything we can to enhance the quality and quantity of our water supply and we have got a good start on leaving a wonderful legacy for future generations, a place in which our chil-

dren will want to stay, not move away."

Howell-Coleman reminded those in attendance that April was water conservation month.

"We really do appreciate you," Winter Haven Mayor Pro Tem Nat Birdsong told Howell-Coleman.

Last year, the city celebrated Earth Day with an urban tree giveaway, but this year there are not as many Earth Day activities in Polk County.

Circle B Bar Reserve has an Earth Day Nature tour April 23 starting at 9:30 a.m. As part of Earth Day

Month, a group of people in Lakeland have formed a group called the Virtual Run Challenge. Their collective goal is to run the distance around the equator over the course of April. Search @virtualrunchallenge online to learn more about this group.

Project Eagle, an event when volunteers gather to clean trash from the shores of the Chain of Lakes, is April 27. Volunteers normally gather at Lake Shipp Park starting at around 8 a.m. The event is sponsored by Keep Winter Haven Clean and Beautiful.

Sizzlin Smokin BBQ raises money for UWCF

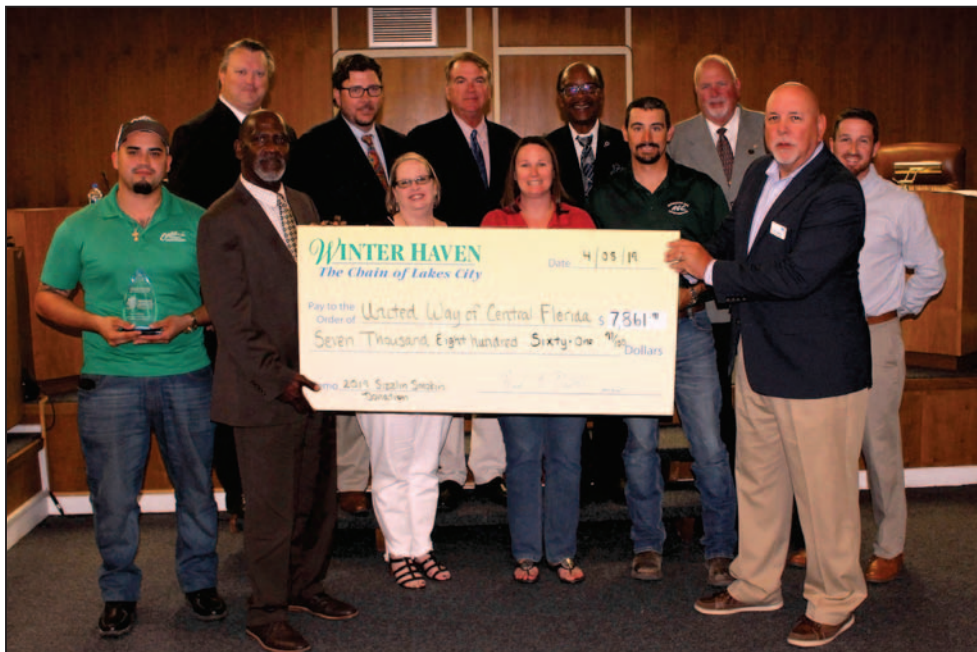


PHOTO PROVIDED BY DONNA SHEEHAN/ CITY OF WINTER HAVEN

The 2019 Sizzlin Smokin BBQ raised \$7,861 for the United Way of Central Florida. The check was presented during the April 8 Winter Haven City Commission meeting.

The Feb. 8 event pit city employees against each other to see who could make the best BBQ.

Tim McGee of the fire department won first place for his "Whiskey Bent" flavor. Winter Haven Police Officer Steve Rusich won second place and People's Choice for his "Buzzkill" flavor.

BUDGET AIR SUPPLY

**39 POINT
A/C TUNE
UP FOR
ONLY \$69**

**WHOLE HOUSE
DUCT CLEANING
\$99 WITH
PURCHASE OF
TUNE UP**





Se Habla Español
#CAC1818793

**EVENING AND
WEEKEND
SERVICE - NO
AFTER HOURS
CHARGE**

**SALES
SERVICE
INSTALLATION
REPAIR**

BUDGETAIRSUPPLY.COM

863.248.5900

BARTOW



Commissioner, mayor lead charge against bills challenging Home Rule

By **JEFF ROSLOW**
Contributing Writer



Trish Pfeiffer

BARTOW – A Bartow City Commissioner last week sent two letters to the Florida Commerce Committee in the state Legislature protesting two bills -- one allowing the state to regulate short term rentals in all of Florida counties and one protesting state regulation of the placement of small cell commu-

nications equipment.

“As the industry has grown, the Department of Business and Professional Regulation (DBPR) has done nothing to ensure compliance with current state licensing requirements. DBPR is overworked and understaffed. DBPR could not handle the administrative burden created by vacation rentals after local governments were preempted in 2011 and is even less equipped to do so now. This is a problem,” a letter from Commissioner Trish Pfeiffer protesting HB 987 on vacation rentals, said.

“A solution is needed that balances the property rights of ALL,” the letter said. “How is this bill protecting the houses in neighborhoods next to these commercial rentals? Issues with unruly behavior, parking and public safety are destroying the residential character of traditional neighborhoods. Residents are suffering while

corporations profit. How can that be right?”

In protesting HB 693 -- the bill regarding the placement of small cell communications equipment -- Pfeiffer stated to the Commerce Committee that it could be dangerous in some counties, writing, “New poles should not be automatically allowed. Cities are purposely limiting potential projectiles in our hurricane prone communities by moving utility lines underground. Existing law recognizes this and allows cities to negotiate placement of small cell wireless equipment accordingly. Undoing this consideration flies in the face of existing and expensive efforts to protect residents and keep services connected.”

Pfeiffer wrote that this bill would allow communication providers to move to the “front of the line” in the permit process, serving special interests rather than people in the communities.

Both letters relate to what many municipalities in Florida – both cities and counties – are protesting to the Legislature as Home Rule. That refers to a 1968 state Constitution revision the public voted on.

“Any house can be a vacation rental,” Pfeiffer said.

Pfeiffer cited Bartow’s famous Wonderhouse as an example, suggesting it could be bought by a corporation and -- despite it being in residential zoning in a neighborhood -- the city of Bartow could not take part in regulating how it is run under the proposed law.

“Because of the Legislature our hands are tied,” Pfeiffer said. “It’s a very lucrative business, but we can’t regulate it. It can overload a sewer system, solid waste, parking. This may be OK for the stakeholders. This is what the Legislature stuck us with.”

Last week in the Legislature, Commerce Committee members voted 13-11 to not move the HB 987 forward. Much of that was due to having eight amendments on which it lost votes. Reports suggest Republican House members on the committee may bring the bill back.

The Home Rule fight was brought further into the public eye by Bartow Mayor Leo Longworth, who is also the president of the Florida League of Cities.

Longworth has made the Home Rule fight at the top of the League’s agenda. He has been campaigning to get the public to contact their legislators.

“Land-use and zoning issues should be local issues, period,” Longworth said. “It’s not for Tallahassee and the legislators.”

He added, “we feel short term rentals and small cell antennas is preempting cities ... taking away their ability to govern. They are trying to say they know better about our neighborhoods. One of the easiest ways for citizens to get involved is to sign up on the Florida League of Cities website.”

Longworth said a press conference near the Florida Senate in Tallahassee was held about vacation rentals. The people there were in protest of the proposed law.

“They were saying things the League of Cities has been saying,” Longworth said. “We know what works best on we want to regulate them. Let that stay local.

And, Longworth said, the protest won’t back down.

“We will continue to advocate forever,” he said. “As long as we are citizens in Florida they will continue to hear from us on the bills we like and the bills we don’t like.”

Esther Reed, Clara Barton remembered by Daughters of the American Revolution

By **GAY HARLOWE**
Guest Writer

As March was Women’s History Month, the Bartow Chapter of the Daughters of the American Revolution remembered two early women at their monthly meeting.

Esther Reed organized 39 ladies who raised \$300,000 for the Continental army during the Revolutionary War. Gen. George Washington suggested the money be used to sew shirts for soldiers, and the women made 2,200 shirts. Women from other colonies joined in similar military re-

lief efforts.

Clara Barton collected bandages and other supplies during the Civil War. She nursed soldiers at 16 battlefields, where she was called “Angel of the Battlefield.” After the war, she traveled to Europe and became aware of the Switzerland-based Red Cross. Upon her return home, she founded the American Red Cross in 1881 and served as its president until 1904.

An ardent supporter of women’s suffrage, she was inducted into the National Women’s Hall of Fame in 1973.

To honor these women,

Bartow members spent many hours crocheting, knitting and sewing more than 20 blankets for children. The large blankets will be sent to Snowball Express Project for children of fallen military heroes, and the small blankets will go to the Linus Project for other needy children.

Members also filled surprise “Boxes for Soldiers” that were mailed to 13 soldiers in Afghanistan, Japan, West Africa, Iraq, Korea and several states. One box went to a new father whose first child was born while he was stationed overseas.



PHOTO PROVIDED

From left: Regent Doris Wooden, Kerry Kennedy, Paula Olive, Harriet Campbell, Sharon Snyder, Gay Harlowe, Cheryl Reeder, Linda Munroe, Martha Bolton, Rozy Scott, Pam Irvin, Kathy Belcher and Clarice Roth.



KIDS EAT FREE

Bartow Location Only

On TUES & SAT
from 11AM to 930PM,
BBQ lovers 10
and under eat
for FREE.

SONNY'S LOCAL PITMASTERS SINCE 68

595 N. Broadway Ave
Bartow, FL
863.534.1429
www.sonnysbbq.com

Best of HAVEN WINNER 2018

LAKE WALES



New commissioner Al Goldstein to be sworn in May 7

By CHARLES A. BAKER III
Staff Writer

LAKE WALES – Mayor Eugene Fultz and Commissioner Curtis Gibson won their bids to be reelected to the Lake Wales City Commission April 2. Al Goldstein won by default when incumbent Tonya Stewart decided not to run for reelection.

Prior to the election, commissioners served for two years. Around 59 percent of voted to change term limits from two to three years. With the approved amendment, Mayor Fultz will be on the commission for the next three years. Goldstein and Gibson were elected to two year terms.

Goldstein spoke at the April 3 city commission meeting as a private resident, congratulating the mayor and Commissioner Curtis Gibson for winning their respective races. Goldstein, a Republican who lives in the Lake Ashton subdivision, represents parts of the city north of Mountain Lake Cutoff Road.

Results of the April 2 election were subsequently verified by the Lake Wales Canvassing Board with the same results.

Of the three candidates, Commissioner Curtis Gibson received the most votes with 1,110. Mayor Fultz received 995 votes. This will be the third term for the mayor and second for Gibson. By far, most Lake Wales residents voted by absentee ballot.



PHOTO BY CHARLES A. BAKER III
Newly elected Lake Wales Commissioner Al Goldstein, who will be sworn in May 7, addressed the commission April 3.

Lake Wales Main Street earns national accreditation

By CHARLES A. BAKER III
Staff Writer

LAKE WALES – Lake Wales Main Street Executive Director Karen Thompson recently received a letter in the mail that put a smile on her face from ear to ear.

Back in June, the organization was designated with national accreditation from Main Street America -- the national organization over local Main Street branches -- for exhibiting the ability to pass 10 vigorous standards of performance.

“Florida Main Street just got around to sending official paperwork to the city recently,” Thompson said. “I’m still as proud today.”

Lake Wales Main Street is one of 829 Main Street organizations to receive national accreditation last year.

According to a press release, in 2017 Main Street America programs generated \$4.48 billion in local reinvestment, helped open 6,211 new businesses, generated 30,294 jobs, catalyzed the rehabilitation of 8,737 historic buildings and clocked 2.7 million volunteer hours.

Lake Wales Main Street is currently spearheading an effort to revitalize and redesign the downtown Lake Wales neighborhood. Staff are also leading a grant program to help bring more restaurants to Lake Wales.

Polk Avenue Elementary earns prestigious ‘Lighthouse School’ honor

LAKE WALES – Many people are aware of the impact that Steven Covey’s “7 Habits of Highly Effective People” has had on the business world.

One Lake Wales Charter school has been using it for eight years now as one of the foundations of its educational approach.

Recently, Polk Avenue Elementary was honored as a prestigious Leader in Me “Lighthouse School.” While thousands of schools across the United States use the program, only a few hundred schools have earned the Lighthouse designation.

Leader in Me helps students learn how to become self-reliant, take initiative, plan ahead, set and track goals, do their homework, prioritize their time, manage their emotions, be considerate of others, express their viewpoint persuasively, resolve conflicts, find creative solutions, value differences and live a balanced life, according to officials from Franklin Covey Education.

“We really believe these skills are the skills that are going to help our children in the future to be great family people, great community members, people that are really employable and have skills that are needed today. That’s our end goal, just to help everybody be a better human,” Principal Gail Quam noted.

This recognition is evidence that the school has produced outstanding results in school and student outcomes, by implementing the Leader in Me process with fidelity and excellence. It is also because of the extraordinary impact the school is having on staff, students, parents, and the greater community, company officials added.

“Schools who achieve this Lighthouse Certification are

great examples of a strong leadership model and process, and of what it means to be a Leader in Me school. This school has experienced transformational results by implementing the principles and practices related to Leader in Me. And, we are so pleased and honored to celebrate the success they are experiencing,” said company President Sean Covey.

The schools hallways and classrooms are covered with posters and signs reminding students about the culture the program strives to create — not only for students, but their families and charter system staff.

The all-inclusive program actually builds its base from different, but similar sources, integrating several leadership, social-emotional learning, quality, and educational models and processes from past and current thought leaders including “The 4 Imperatives of Great Leaders” and “The 4 Disciplines of Execution.”

“The 7 Habits of Highly Effective People” is also a key component of the overall Leader in Me process and is a synthesis of universal, timeless principles of personal, interpersonal, and organizational effectiveness, such as responsibility, vision, integrity, teamwork, collaboration and renewal.

“We have seen amazing results from implementing the Leader in Me process at our school,” Quam added. “One example is a student who in the past had a difficult time behaving in school and now is a member of our Student Lighthouse Team, helping to give leadership to the school. This process not only has had a significant impact on this student, but on all students. And we expect to see greater results over time.”

LILLY & BROWN LLP

INJURY LAW

683-1111 • OFFICES: POLK COUNTY

LILLYBROWNLAW.COM

Specializing in Secondary Roads

- Grove, Ranch & Logging Roads-Built & Maintained
- Broken Tile, Crushed Tile, Shell Rock-Fill & Rip Rap
- Parking Pads-Grading
- Residential & Commercial Driveways
- House and Mobile Home Pads

All Material Available For Pickup or We Can Deliver, Spread and Compact For You!

We Offer Complete Tree and Land Clearing Services

Tree Removal • Trimming • Shaping • Topping
Lot Clearing • Debris Removal • Stump Grinding
Storm Damage • Overhangs • Cleanup
Back Fill • Yard Restoration • Boulders

We Offer All Types of Concrete Work

WE SELL PROPANE Including MOTOR HOMES!

Woody Ellison, Owner • Licensed/Insured
4865 State Rd. 60E, Lake Wales, FL * 863-679-5283

24 HR ON/OFFSITE WELDING Fabrication Emergency Services

FREE Estimates

CROSSWORD

FOR ANSWERS, TURN TO PAGE 18



1	2	3	4		5	6	7		8	9	10		
11				12		13			14				
15						16			17				
	18				19				20				
					22	23			24				
25	26	27	28	29									
30							31						
32									33	34	35	36	37
					38	39	40		41	42			
					43			44					
		45	46										
47	48				49				50	51	52	53	54
55					56				57				58
59					60				61				
62					63				64				

CLUES ACROSS

- 1. A way to wound
- 5. Hormone secreted by the pituitary gland (abbr.)
- 8. Shows the world
- 11. Decided
- 13. Indigenous person of NE Thailand
- 14. Dough made from corn flour
- 15. Honors
- 16. Political commentator Coulter
- 17. Expresses pleasure
- 18. Heavy clubs
- 20. Defunct phone company
- 21. Algonquian language
- 22. Salts
- 25. Act of the bank
- 30. Danced
- 31. Drummer Weinberg
- 32. Small goose

- 33. Helps evade
- 38. Certified public accountant
- 41. Periods of time
- 43. Kids' book character
- 45. Type of beer
- 47. Ancient kingdom near Dead Sea
- 49. A way to attack
- 50. Talk radio personality Margery
- 55. Whale ship captain
- 56. Request

- 57. Large underground railstation in Paris
- 59. BBQ dish
- 60. No (Scottish)
- 61. Jewish spiritual leader
- 62. Tool used to harvest agave
- 63. Explosive
- 64. A reward (archaic)

CLUES DOWN

- 1. One thousand cubic feet (abbr.)
- 2. Polite interruption sound
- 3. Extremely small amount
- 4. Very short period of time (abbr.)
- 5. Fires have them
- 6. Sacred place
- 7. Island capital
- 8. Volcanic craters
- 9. Arthur __, Wimbledon champion
- 10. Bullfighting maneuver
- 12. Midway between east and southeast
- 14. A ceremonial staff
- 19. Cheap prices
- 23. North Atlantic fish
- 24. Oil company
- 25. A federally chartered savings bank
- 26. Paddle
- 27. Where UK soldiers train
- 28. One point north of due east
- 29. Attention-getting
- 34. Ballplayer's tool
- 35. Sun up in New York
- 36. Where golfers begin
- 37. Soviet Socialist Republic
- 39. Represented as walking (animal)
- 40. Craftsman
- 41. Unit of force (abbr.)
- 42. Dueling sword
- 44. Houston hoopster
- 45. Stone building at Mecca
- 46. __ and flows
- 47. "Beastmaster" actor Singer
- 48. American state
- 51. Swiss river
- 52. U.S. island territory
- 53. German physicist
- 54. One point east of northeast
- 58. Get free of



EXPERIENCE **BEAUTY**
IN FULL **BLOOM.**

Explore the beauty of the gardens this spring and enjoy a full schedule of exciting events.

EASTER SUNRISE SERVICE

APRIL 21

Free admission offered until 8 a.m. Service begins at 7 a.m.

BRUNCH IN THE GARDENS

APRIL 28 | 11 A.M.-1 P.M.

Enjoy delicious Blue Palmetto Cafe cuisine and live entertainment with Marcus Brixia. Brunch includes unlimited scrambled eggs, bacon, biscuits & gravy, waffles, Chef's Choice of dishes, fresh fruit and bottomless Florida's Natural mimosas served in the outdoor kitchen.

MOTHER'S DAY

MAY 12

Free admission offered to all mothers along with special music from the Singing Tower.

SPONSORED IN PART BY



**BOK TOWER
GARDENS**

1151 TOWER BOULEVARD | LAKE WALES, FL 33853
863-676-1408 | BOKTOWERGARDENS.ORG

WORSHIP DIRECTORY

discover a place of worship near you

JOIN US FOR EASTER! April 21

Breakfast 8:45 am; Worship 10:00 am

Join us on April 21 for Easter Sunday!
We will worship together as we celebrate the
resurrection of our Savior!

7 am - Community-wide Sunrise Service at Mosiac Park

8:45 am - Easter Breakfast at Church (in the Ministry Center)

10:00 am - Easter Worship Service



First Baptist Church Bartow
410 East Church St., Bartow FL 33830
863-533-9055

Freewill Baptist Church

Pastor, Mike Scorsome
1125 Hwy 17 South
Bartow, FL
33830
863.533.4734

KJV Fundamental Premillennial

- Southern Gospel Music Only
- Sunday School 10:00 am
- Sunday Morning 11:00 am
- Sunday Night 6:00 pm
- Wednesday Night 7:00 pm

New Life BAPTIST CHURCH

- Sunday School 10 am
- Morning Worship 11 am
- Sunday Evening 6 pm
- Wed Evening 7 pm
- *KJV Bible Preaching
- *Hymns & Spiritual Songs

Pastor Maurice Thompson

624 North Ingraham Ave
Lakeland, FL 33801

863.229.6337

"ALL WELCOME"

Holy Cross Episcopal Church

201 Kipling Lane
Winter Haven, FL 33884
863-324-4021
holycrosswinterhaven.com

Rev. Deke Miller, Vicar
Sunday Worship
Rite I 8:00 a.m.

Rite II with Music 10:00 a.m.
**Children's Chapel and
Sunday School**

During 10:00 service
**Wednesday Night Dinner
and Bible Study 6:00 p.m.**

Good Friday: 12 noon & 6:30 pm
Easter Services: 8:00am & 10:00 am

LIGHTHOUSE BAPTIST CHURCH

Independent Baptist
307 ABC Rd, Lake Wales
(3 miles S of SR 60 on US 27)

David Williams, Pastor
Old-Fashioned Preaching
& Hymns-KJV Bible

Sunday School, 9:30am
Sunday Morning, 10:30am
Sunday Night, 6:00pm
Wednesday Night, 7:00pm

638-2040

BETHEL BAPTIST CHURCH

Newly Re-Opened
After 2015 Fire.

**Join Us Sundays
at 11AM**

2143 Hwy 60 West,
Lake Wales
(near Airport Rd.)

Pastor Keith Wolfe
863-585-5809

Come GROW with US!

863.804.3279 lbelue@scmginc.com

Everyone Welcome



BARTOW CHURCH OF GOD

1460 East Stuart St
Bartow, FL 33830
863.868.8603

Elwood F. Kern, Pastor
Sunday School, 10:00am
Morning Worship, 11:00am
Sunday Evening, 6:00pm
Wednesday, 7:00pm

Winter Haven Elite travel baseball program sees early successes

By STEVEN RYZEWSKI
Executive Editor



PHOTOS PROVIDED
The Winter Haven Elite 11U Navy team has already qualified for the
GSA World Series in Clearwater.

WINTER HAVEN — Thomas Adams and other Winter Haven area baseball parents remember the commutes.

Without a dedicated travel baseball organization in Winter Haven, parents of ballplayers were having to find club organizations based elsewhere. It was problematic, especially considering the importance travel baseball has taken on in addition to traditional Little League or Babe Ruth Baseball.

"A lot of those kids from the area were having to drive to Lakeland or Tampa to play travel," Adams recalled.

Former Winter Haven Mayor Steven Hunnicutt had heard the frustrations, too. His grandchildren were among those who had to travel out of East Polk, and while he was in office he would field questions beyond those concerning millage rates and zoning ordinances.

"A lot of people kept coming to me saying 'how come we can't do (a travel baseball organization) here?'" Hunnicutt said.

From that genesis, Winter Haven Elite Baseball was created. The locally-based travel baseball organization currently has four teams and is in its second season this spring after a successful debut in the fall.

Hunnicutt, the president and director of the organization, says that the response has been strong.

"We thought we were only going to have two teams (at the start), but we posted the try-outs for fall ball and had 91 kids come out," Hunnicutt said, adding that 133 tried out for the four teams playing this spring.

What's more, beyond the enthusiastic participation, the teams Winter Haven Elite has field have been competitive and earned success on the field.

Among other successes, Elite's 12U team won the state championship tournament in the fall. The organization's two 11U teams have had success, too, with the 11U Navy team in particular has had a strong spring and after a recent tournament championship has qualified for the GSA World Series in Clearwater — all fees paid. That team is coached by Brian Coconato.

The 12U team that won in the fall is coached by Adams, who says his team doesn't necessarily have the most talented players but rather has players that do the little things and do them well.

"We're not a big team," Adams said. "What we do well is we pitch well, we play good defense and we get timely hitting."

Indeed, Adams' squad has shown a resilience that, for a young travel organization, could well become a trait of Elite's culture. For context, many travel tournaments involve pool play on Saturday before elimination games on Sunday.

"We've had a lot of teams who've beat us on Saturday and we wind up beating them when it really matters on Sunday," Adams said. "We've got a team that really never gives up."

Those interested in becoming involved with Winter Haven Elite can visit the organization's website at www.winterhavenelitebaseball.com, or the organization's Facebook page.

As Hunnicutt tells it, the success on the field has been nice, but what matters most is providing a platform for local youth ballplayers.

"All I want to do is give the kids who live here, in Winter Haven, an opportunity compete at a different level," Hunnicutt said. "To me, it's more about them and giving them the opportunity to do something that they love."



The Winter Haven Elite 12U team won a state championship in the fall and is eager to find more success this spring.

Get your subscription today!

863.533.4183

COUNTY SPORTS



Athlete of the Week: Alexandra Dilts

Sponsored by Bond Clinic

By STEVEN RYZEWSKI
Executive Editor

The Winter Haven softball team is 11-10 but has won four of its past six games and has seen strong play from senior Alexandra "Ally" Dilts. Dilts, a utility infielder who starts at second base for the Blue Devils, is hitting .430 and plays great defense, according to head coach Steve Ricks.

She is committed to play her college softball at South Florida State College in Avon Park.

What's changed for you during the course of the season such that you're playing better recently?

Probably my confidence and I've been really working at it and concentrating on getting better in the game.

What's it like to be a senior in the program?

It's sad -- it's like 'wow, this is really my last year.' I'm going to make the best of it and I'm going to make it my biggest year and my most successful year. I'm going to do everything I can to make it that way.

What does this team have to do to be successful in the district tournament?

Just work as a team, stay focused throughout the whole game and lift each other up. We have to stay as a team.

What do you like about softball?

That's a hard one, I really like everything. Probably

About Alexandra
Year: Senior
Position: Utility
Hits: Switch
Throws: Right
Height: 5-foot-2



competing against another team is my favorite thing about the sport.

Do you have a favorite team to compete against?

I like playing Lake Region. We know a lot of the people (in that program) and it gets very rivalrous.

How did you come to be signed to South Florida State?

I got in contact with the coach and he asked me to come out to a practice. (South Florida State) was my only (scholarship) offer so of course I'm going to take it -- I want my college paid for.

How long ago did you start playing softball?

I started in coach pitch. I stopped playing for three years and then after that I went right in to travel ball. I wasn't very good but then I went into this one team, the Lady Devils, and they taught me so much. I became a whole different player.

Have you had any teammates whom you look up to?

Well, last year we only had

two seniors who were starters. I looked up to them and one of them (Anizya Vargas) would hit clutch home runs. That was really cool. ... She had a good attitude, too.

Who is your funniest teammate?

Casey Kurent.

What do you think you would like to do for a career?

I'm thinking about being a lawyer, because they make big bank. Everyone says I'm good at arguing and, if I have the facts, yeah I'm good at arguing. But it's mainly because of the money.

What's your favorite subject in school?

Writing -- I'll write about my life, anything. I love writing and letting people know what's in my thoughts.

What are some of your favorite places you have been?

I've been to South Carolina for my brother's Marines graduation and I've been to Mississippi.

If you could travel anywhere, where would you go and why?

I'd go to Panama, because I have family there that I've never met and that's part of my blood.

U.S. Open Cup coming to Polk as Lakeland Tropics host game May 7

LAKELAND – One of the world's longest continually operated soccer tournaments is coming to Polk County for the first time in history.

The Lakeland Tropics, getting ready to start their third season in USL League Two on May 11, will host The Villages SC Buffalo in the first round of the Lamar Hunt U.S. Open Cup on Tuesday, May 7, at 7:30 p.m. at Lake Myrtle Sports Park Stadium in Auburndale.

It is the second straight year the Tropics have earned a berth in event, which has been held every year since 1914. However, last spring, Lakeland had to travel to Midland, Texas, for its first round game, losing 3-0.

"This is a great culmination of several years of hard work by the team, coaches, and our organization as a whole, and most importantly, a great reward for our community and fans to be able to host

a U.S. Open Cup game," said Tropics CEO Dr. Panos Iakovidis. "May 7th will be about great soccer and the pride of being involved in one of the great events in the sport. We are thrilled for everyone, and can't wait to welcome one of our biggest rivals to play in our biggest game ever."

The rival was almost instantaneous, as The Villages SC provided the opposition in May 2017 in Lakeland's first ever USL game, which drew over 6,000 fans to Bryant Stadium. The two heavyweights traded shots before the Tropics pulled out a 4-3 win, and also took a 3-1 road win against the Buffalo as well.

Lakeland holds a 2-1-1 advantage in the four games played between the teams over the past two years.

The two teams finished tied for second in the USL League Two Southeastern Division with identical 9-3-2 records, but the Buf-

falo advanced to the playoffs on a tiebreaker.

In all, the tournament will boast a field of 84 teams, including a record 52 professional teams. The first round will commence May 7-8 and consist of six Division III (USL League One) pro clubs and 32 Open Division teams (USL League Two, National Premier Soccer League, local qualifiers) in head-to-head, single-elimination competition.

The second round follows on May 14-15 and introduces 25 Division II (USL Championship) professional sides. Division I Major League Soccer teams enter in the Fourth Round on June 12. The opponent and venue for the winner of the Tropics opening round game will be announced on April 17.

Every game of the 2019 U.S. Open Cup, including those in the First and Second Rounds, will be available for fans to watch on ESPN+.

Don't Sweat It.
Let our team guide your recovery.

BOND
PHYSICAL THERAPY



- compassionate & caring staff
- family friendly
- eager to help you reach your potential

293-1191 x3701

FEELING FIT



The 'ripe' time for cataract surgery

By WILLIAM CORKINS, O.D.
Eye Specialists of Mid-Florida

Whenever I tell a patient that he or she has cataracts they immediately ask if they need to have surgery.

We start thinking about cataract surgery whenever the patient's quality of life is affected. Common complaints include, "I can't read road signs," or "I can't read the writing on TV," or "I can't read small print."

If I cannot make the glasses prescription better, then we start to consider surgery.

Another very common complaint that drives cataract surgery is glare at night caused by oncoming headlights or rainy nights.

I often hear from patients, "I thought you did cataract surgery when it was ripe." Cataracts are not tomatoes — they do not get ripe! This expression came about

when Medicare used the criteria of 20/50.

If, with the best glasses, your corrected vision was worse than 20/50, then the cataract was "ripe" and Medicare would pay 80 percent of the cataract procedure.

We have learned that using 20/50 as the criteria for cataract surgery is not adequate. Glare from the cataract is a more debilitating problem. You can have a person who can read the 20/20 Snellen line, but under glare conditions this person's vision drops to 20/80 or worse!

I explain this to my patients and they understand that the doctor is not the person who decides when to do cataract surgery — the patient does. When I examine

my patients' eyes annually, I listen for complaints. If the patient is happy with his or her vision and is functioning well visually, we schedule a follow-up appointment in one year.

If the patient becomes symptomatic before then, they know to schedule an appointment sooner so we can talk about cataract surgery.

Dr. Corkins served as a Captain in the U.S. Navy Reserve and still has a passion for aviation. He sees patients at the Lakeland-Edgewood location for Eye Specialists of Mid-Florida.

Watson Clinic ENT Department welcomes new medical provider



Lakeland – Watson Clinic recently announced the arrival of an additional medical provider to its otolaryngology (ENT) department.

Anissa B. Hohnstreiter, MSN, APRN, works alongside board-certified otolaryngologist Jeffrey A. Paffrath, MD, from both the Watson Clinic Bella Vista Building location at 1755 N. Florida Ave.

in Lakeland and Watson Clinic Highlands at 2300 E. County Rd. 540A in south Lakeland.

Her addition to Dr. Paffrath's practice results in expanded appointment availability and an exceptional quality of care.

Hohnstreiter received her Bachelor of Science in Nursing degree from the University of South Florida in Tampa and her Master of Science in Nursing degree from Florida Southern College in Lakeland. She has extensive clinical experience, is a licensed advanced registered nurse practitioner and is a member of the Florida Association of Nurse Practitioners as well as the Polk County Advanced Practice Nurses Association.

For more information and to schedule an appointment with Ms. Hohnstreiter, please call (863) 680-7486.

Lakeland Regional Health announces 2019 Philanthropist and Advocate of the Year honorees

Lakeland Regional Health honored the legacy of George W. Jenkins as Philanthropist of the Year and Paul R. Banerjee, DO, as Advocate of the Year at its annual Philanthropist and Advocate of the Year program on Tuesday, April 16.

A release from Lakeland Regional stated: "As the late founder of Publix Super Markets Inc., Jenkins created a legacy of caring that is carried out every day in Lake-

land and across the country. Mr. George believed that for an organization to be truly successful, it must give back to the community. He set the example for Publix associates by giving his time, money and talent to the communities that Publix operates in – and Lakeland Regional Health has been fortunate to be a beneficiary of that generosity. Publix Super Markets Charities and the George Jenkins Foundation are two very vibrant examples of how Mr. George's spirit of caring for the community continues to impact generations to come."

"We continue to be profoundly touched by the legacy that George Jenkins left behind," said Ginny Houghton, Lakeland Regional Health Foundation Board Chair. "We are so grateful for the crucial support that his Foundation provides to allow us to deliver nationally recognized healthcare."

Regarding Banerjee, the statement read: "As long-time Medical Director of Polk County Fire Rescue, Dr. Banerjee is committed to strengthening the health of this community and is constantly innovating to find timelier protocols and the latest equipment to increase the number of lives saved each day. He is a key collaborator on an initiative that ensures Lakeland Regional Health offers the timeliest acute heart attack care possible by authorizing paramedics to signal the on-call cardiac interventional team at Lakeland Regional Health Medical Center. Dr. Banerjee also helped establish a direct-to-catheterization initiative that speeds up lifesaving care for those experiencing potentially fatal heart blockages."

In 2017, Banerjee was honored with the EMS10:

Innovators in EMS award. He recently co-authored the article, "On-Scene Management of Pediatric Out-of-Hospital Cardiac Arrest Results in Improved Survival," published in the Journal of Resuscitation.

Banerjee also serves as an Assistant Professor of Emergency Medicine at the University of Central Florida's College of Medicine, where he recently earned the Early Career Investigator Award for Achievement in Research.

The special program highlighting the honorees took place in the Mulaney Family Auditorium at the Carol Jenkins Barnett Pavilion for Women and Children.

"We are so blessed to be surrounded by a community that generously supports the important work we do every day," said Elaine C. Thompson, PhD, FACHE, Lakeland Regional Health President and CEO. "Our donors play such a vital role in ensuring we deliver the best outcomes and safest care to the patients and families we are privileged to serve."

Mary Montsko, M.D. will be leaving WellMed at St. Isabel effective April 12, 2019.

Patients and medical records will be relocating to:

WellMed at Bayside

2706 W. St. Isabel Street | Tampa, FL 33607

813-876-9961



WELLMED
AT BAYSIDE
Part of OptumCare®

For questions or copies of medical records call:
813-876-9961

FEELING FIT

Wellness Calendar

April 27

JUDD JOG 5K - 8 a.m.

The Judd Jog is an annual 5k presented by Polk Sheriff's Charities, Inc. with all proceeds benefiting the United Way. The course is paved and begins and ends at the front of the Polk County Sheriff's Office main office in Winter Haven. There will be additional activities available for your family and friends during the event, including: Polk County Sheriff's Office Special Operations vehicles on display, K-9 meet and greet, and more! Restrooms will be available for public use during the event. More info: juddjog.org.

April 29

TO YOUR HEALTH! PLAN SMART - RETHINK WHAT YOU EAT - Noon

This workshop will focus on meal-planning, including how to repurpose leftovers. With just a few staples in your pantry, you can make a tasty "new" meal. We'll use "My Plate" as a base for meals and snacks, while making meal prep and eating a special event! A light, healthy lunch will be served. The class is free, however, registration is required. Call (836) 678-4004, ext. 221, to register.

MONDAY

Low-Impact Exercise Class - 9:30-10:15 a.m.

This low-impact aerobic exercise class uses the Richard Simmon's Silver Fox video tape, which is played on a large screen television. This is an excellent workout for all fitness levels. Winter Haven Senior Adult Center, 250 South Lake Silver Dr., NW, Winter Haven. For more information, call (863) 291-5870. Registration required. Free.

Strength and Cardio 10:45-11:45 a.m.

A total body workout that includes aerobic, strengthening, balance, and flexibility modalities. Winter Haven Senior Adult Center, 250 South Lake Silver Dr., NW, Winter Haven. For more information, call (863) 291-5870. \$1 resident/ \$2 non-resident.

Belly Dance - 6-7 p.m.

Tribal Belly Dance classes are a fun way to lose weight and build self confidence. Join us on Mondays! Call (863)

291-5656 for more information. Ages 16 and up. Rotary Park Clubhouse, 350 Sixth St. NE, Winter Haven.

TUESDAY

Wellness with Isabel 10:30-11:30 a.m.

A 60 minute low-impact total body workout that includes aerobic, strengthening, balance and flexibility modalities. It provides an intense workout that is easily modified for beginners. Winter Haven Senior Adult Center, 250 South Lake Silver Dr., NW, Winter Haven. For more information, call (863) 291-5870. \$1 resident/ \$2 non-resident, registration required.

WEDNESDAY

Low-Impact Exercise Class 9:30-10:15 a.m.

This low-impact aerobic exercise class uses the Richard Simmon's Silver Fox video tape, which is played on a large screen television. This is an excellent workout for all fitness levels. Winter Haven Senior Adult Center, 250 South Lake Silver Dr., NW, Winter Haven. For more information, call (863) 291-5870. Registration required. Free.

Chair Yoga 10:30-11:30 a.m.

Chair yoga is designed for seniors and focuses on flexibility, strengthening, stress reduction and relaxation. Enjoy the benefits of yoga sitting in a chair rather than getting up and down from the floor. Winter Haven Senior Adult Center, 250 South Lake Silver Dr., NW, Winter Haven. For more information, call (863) 291-5870. Registration required. Free.

Tai Chi - 1:30 p.m.

Experience the gentle flowing movements of Tai Chi, and treat your whole body to a gentle and relaxing workout. Winter Haven Senior Adult Center, 250 South Lake Silver Dr., NW, Winter Haven. For more information, call (863) 291-5870. \$4 resident/ \$5 non-resident.

West Coast Swing 5-6 p.m.

Instructor Susan Staton teaches beginner/intermediate West Coast Swing for all ages — a style of dance which is enjoyed both socially and

competitively around the world. No Partner Needed! Call (863) 291-5656 for more information. Winter Haven Senior Adult Center, 250 S. Lake Silver Dr., Winter Haven.

Ballroom Dance - 6-7 p.m.

Instructor Susan Staton teaches beginner/intermediate ballroom dance for all ages — a style of dance which is enjoyed both socially and competitively around the world. No Partner Needed! Call (863) 291-5656 for more information. Winter Haven Senior Adult Center, 250 S. Lake Silver Dr., Winter Haven.

THURSDAY

Wellness with Isabel 10:30-11:30 a.m.

A 60 minute low-impact total body workout that includes aerobic, strengthening, balance and flexibility modalities. It provides an intense workout that is easily modified for beginners. Winter Haven Senior Adult Center, 250 South Lake Silver Dr., NW, Winter Haven. For more information, call (863) 291-5870. \$1 resident/ \$2 non-resident, registration required.

FRIDAY

Low-Impact Exercise Class 9:30-10:15 a.m.

This low-impact aerobic exercise class uses the Richard Simmon's Silver Fox video tape, which is played on a large screen television. This is an excellent workout for all fitness levels. Winter Haven Senior Adult Center, 250 South Lake Silver Dr., NW, Winter Haven. For more information, call (863) 291-5870. Registration required. Free.

Chair Yoga 10:30-11:30 a.m.

Chair yoga is designed for seniors and focuses on flexibility, strengthening, stress reduction and relaxation. Enjoy the benefits of yoga sitting in a chair rather than getting up and down from the floor. Winter Haven Senior Adult Center, 250 South Lake Silver Dr., NW, Winter Haven. For more information, call (863) 291-5870. Registration required. Free.

*Don't let cataracts
slow you down!*



When is the right time for cataract surgery? When the cataract blurs vision enough to interfere with normal daily activities, such as driving and enjoying hobbies, it's time to schedule surgery.

We offer the latest technology in laser-assisted cataract surgery, so you can quickly return to the activities you love!

**Schedule an eye exam
appointment today**

800-282-EYES (3937) | eyesfl.com



*We specialize in caring for
your special eyes.*

VIEWPOINTS



Sports rules: as flexible as a Slinky



Thinking Out Loud
S.L. Frisbie

As mentioned from time to time over the years, my classmates in the Summerlin Institute Class of 1958 awarded me — with ample justification — the title of “Least Athletic.”

This does not mean that I do not enjoy sports as a spectator activity.

My two favorite spectator sports are (1) football and (2) whatever I am watching one of my grandchildren

play.

I am indebted to my son, Loyal — whose childhood plan was to become first baseman for the Chicago Cubs — for helping me understand the ever-changing rules of sports.

Some are pretty basic. For example:

- Decking an intended pass receiver hard enough to knock him into the eighth row of the end zone bleachers is subject to being called pass interference, provided the ref is paying attention.

- Soccer is a non-contact sport, which means that knocking an opponent head over heels must be made to look unintentional. This rule actually has encouraged a number of mediocre athletes to find promising careers in acting.

Loyal has pointed out to me that in countries in which football (known in the U.S. as soccer) is a national obsession, when a player is tripped up by an opponent, he is required by local custom to grimace in pain as one might with a life-threatening injury.

Not until after the trippor has been penalized for the infraction is the tripee allowed to experience a miraculous recovery and trot happily back to rejoin his teammates.

When I was taking basketball in high school physical

education class, we were taught that dribbling must be accomplished with the finesse of a prima donna pirouetting across the stage in Nutcracker Suite.

Double-dribbling consisted of stopping the dribble, then resuming without passing the ball to a teammate.

It also consisted of palming the ball, which was basically catching the ball with one hand and carrying it a few steps before flipping it over and bouncing it again.

The other once inviolable rule was traveling, which meant taking more than two (or was it three?) steps without taking a shot.

In the passage of 60 years or so, palming the ball has become routine, and traveling is called only if a player neglects to bounce the ball once or twice while running the entire length of the court.

A week or two ago, the outcome of one of the last games in the basketball finals was said to be jeopardized when a player who was dribbling the ball dropped it, chased it across the court, and picked it up to begin dribbling again.

Veteran sportscasters said he should have been called for double-dribbling, a term I didn't think they even knew.

A few weeks before that, a pass defender creamed an intended receiver hard enough to knock the numbers off his jersey while the ball was still in the air nearly a county away. No infraction was called.

There was discussion of putting foul calls or non-calls on instant replay, or at least allowing 12-year-olds to send them to friends on Snapchat.

The sacred sports rules of my high school P.E. days have become a relic of the past.

(S. L. Frisbie is retired. Despite his limited prowess in sports, he always made an A in P.E. in high school. All this required was remembering to dress out for class. This was roughly equivalent to remembering to bring a slide rule to a math test.)

Letter the the Editor:

Lawmakers should invest in youth, Florida Police Athletic League programs.

Proactively saving the lives of our youth with positive programs should be a priority for Lawmakers serving the great state of Florida.

The Florida House of Representatives and the Florida State Senate are majority ruled by the Republicans in the state of Florida. Not all, but some, lawmakers are placing higher priority on correctional facilities versus positive youth development programs like the Florida Police Athletic League Programs.

I truly believe some Lawmakers in the state of Florida are serving a small group of citizens within their circle of friends and not the majority of citizens. Passing House and Senate Bills pertaining to our youth safety should be the highest priority.

Currently, House Bill (HB) 2651 and similar bills from the past were denied funding for the Florida Police Athletic League Programs. If HB 2651 would have been passed, this year the Florida Police Athletic League Programs would have received \$800,000-plus dollars throughout the state of Florida to provide: mentoring, crime prevention and intervention programs for our youth.

There are some cities nearby — Tampa, Orlando and Jacksonville — that truly need the funding to save youth lives.

Unless some State Lawmakers are invested in for-profit correctional facilities, why not pass HB 2651 that provide services for the Florida Police Athletic League Programs?

Let's save young youth lives.

Dr. Shandale Terrell
Lakeland

Training Together for safety's sake



Polk County Sheriff
Grady Judd

If you've lived in Polk for any length of time, you know that when it comes to keeping people safe, our city and county departments are committed to working together across jurisdictional and bureaucratic boundaries.

Our Emergency Communications Center (ECC) answers 9-1-1 calls and dispatches for nearly

every city police department in the county, as well as Polk County Fire Rescue (PCFR).

Our deputies have automated external defibrillators (AEDs) in their patrol cars and we have used them to save lives.

Recently we had the opportunity to work with PCFR to outfit their paramedics and firefighters with “active shooter safety equipment,” including protective tactical vests and ballistic helmets, as well as specialty medical “go-bags” to use during an incident of mass violence or

when responding to an active shooter.

We also began training every one of their members how to react and respond to active shooter scenes. The goal is to help PCFR safely and swiftly triage, treat and transport potential victims as quickly as possible.

Four years ago, our agency SWAT members responded to a scene on Executive Road in Winter Haven where an armed suspect was barricaded inside a warehouse, shooting at responding units from his position. PCFR has, for many years, had tactically-trained paramedics assigned to our SWAT, equipped with similar protective gear. During that scenario, paramedic John Mikula was shot in the shoulder.

Fortunately, he wasn't more seriously injured and was treated on-scene and quickly transported.

During the aftermath of that incident and upon seeing the increase of active shooters nationwide, we collaborated with PCFR on how to better equip and train their members to respond to mass casualty incidents.

This new equipment and training is not only a win-win for both our agencies, it's a win for the citizens we serve.

Sound off!

Readers of the Winter Haven Sun and the Polk News-Sun are welcome to send Letters to the Editor for consideration for publication. All entries must be fewer than 250 words and include the author's full name and city of residence. Submissions should be emailed to news@scmginc.com with “Letter to the Editor” in the message title.

Editorial cartoon



BUSINESS & SERVICE DIRECTORY



APPLIANCES/TVs

THANKS for Voting **#1** US
 BEST Appliances BEST Appliance Repair Lake Wales / Frostproof
2015 Reader's Choice Award Winner

Hermans
 TV & APPLIANCES, INC.
 ESTABLISHED 1956

*Whirlpool *Kitchenaid
 *Crosley *Estate
 *Amana Family Owned & Operated

114 W. Park Ave, Lake Wales
676-1479

FURNITURE

BED & FURNITURE Haven 863.845.2025
 1806 1st Street S. Winter Haven, FL 33830
 Next to Chick-Fil-A **Best of HAVEN WINNER**

#1 FOR MATTRESSES AND FURNITURE!

Murphy Bed Cabinet **Recliners**

Convertible Sofa **Mattresses LUXURY FOR LESS & LOWEST PRICES Adjustable Beds**

- Futons • Sofa Beds • Day Beds • Bedroom Sets
- Head Boards • Protector Pads • Dining Sets • Adjustable Beds
- Waterbeds • Couches • Pillows • And so much more!

BedAndFurnitureHaven.com

MISC. CONTRACTING

Miscellaneous Contracting
 NO JOB TOO SMALL
 COMMERCIAL/RESIDENTIAL

- *General Repairs *Painting
- *Concrete Work
- *Vinyl Siding Installation
- *Chimney Cleaning

HOLLIS SMITH
 863-528-2435
 hhs548@aol.com

Occupational Licensed & Insured

REAL ESTATE

JUDY B. CLEAVES PROPERTIES, INC.

Chris Goode - REALTOR®
 chris@jbcleaves.com
 863-287-5454

Brittany DeVore - REALTOR®
 brittany.n.devore@gmail.com
 863-412-4847

131 5th Street N.W.
 Winter Haven, FL 33881
 www.jbcleaves.com

Together, We're Working For You!

ROOFING

WEST ORANGE ROOFING INC.

Winter Garden's Premier Roofing Company Since 1978

Serving Polk County & ALL of West Orange County

Fully Licensed & Insured
 Roof Repairs and Replacements
 License #RC29027533

FREE ESTIMATES
 863-965-8920
 WestOrangeRoofing.com

AUTO/COACHWORKS

Roger Barfield Owner
 Warranty Work & Ins. Claims Honored

AUTO & COACHWORKS OF CENTRAL FLORIDA

Ph: (863) 967-5463 3650 Havendale Blvd.
 Fax: (863) 967-3268 Winter Haven, FL 33881

Local News

In Print & Online

www.polknewssun.com
 www.winterhavensun.com

THRIFT

High Quality...Low Prices

Thrift Shop

167 Avenue A, N.W.
 Winter Haven
 Monday-Friday 10am-5pm
 CLOSED Saturday & Sunday
 863.293.4137

Cheep BOUTIQUE

HOME IMPROVEMENT

AIS SHOWER DOORS, INC.
 "Where Quality Comes First!"

Professional Sales • Installation • Service

We Specialize in Frameless Shower Doors/Enclosures Residential/Commercial

FREE In-Home Consultation/Quote

Member of the Polk County Builders Association
 Locally Owned & Operated
 Licensed & Insured
 WE GLADLY ACCEPT VISA & MASTERCARD

CALL TODAY
 (863)393-8209
 (863)667-1200

www.AISshowerdoors.com

business **DIRECTORY**

For information about running your Business/Service Directory Ad in the Polk New Sun and Winter Haven Sun for as little as \$35/wk

Call **863.533.4183**

LIVE IN CONCERT **APRIL 20**
 POLK THEATRE IN LAKE LAND!

PEACE & LOVE TOUR
 Celebrating The 50TH ANNIVERSARY of the SUMMER that changed EVERYTHING

PAISLEY CRAZE Band LIVE!

ONE NIGHT ONLY! Get here early for pre-show festivities!

BOX OFFICE: 121 S. Florida Ave. • Lakeland, FL 33801
www.polktheatre.org or call (863) 682-7553
 Doors open at 5:30pm • 7:00pm showtime • Let's see your best '60s attire!
 All sales final, additional taxes & fees may apply. Call for special needs seating.

CLASSIFIEDS

863.533.4183



Automobiles

2010 Ford Fusion Hybrid 2nd owner 33 mpg very clean too many extras to list \$5,550.00 **863 845 5112**

EMPLOYMENT

Help Wanted

Maintenance Technician Needed
Please Visit Career Opportunities at www.myfountainplacehome.com

Mock Jurors Earn a minimum \$110 upon completion Spend 6-10 hrs on a given wkday night, wkday or wkend serving as a juror in a mock trial to evaluate settlement of an actual court case. If you have a valid FL DL or State I.D., a U.S. Citizen, and eligible to vote, enroll with us on: SIGNUPDIRECT.COM (please fill out on line form completely for consideration) or only if you do not have access to a computer Call: 1-800-544-5798. (On-line sign up preferred). *****Mock Trials will be held in downtown Tampa.

WCM Roofing LLC
Need experienced roofers and laborers with a valid driver's license.
Experience in:
Metal, Shingles and TPO
Please call
863-969-3722 ask for Melissa

CLASSIFIEDS GET RESULTS!

CROSSWORD ANSWERS FROM PAGE 11

1	2	3	4		5	6	7		8	9	10
11			12		13				14		
15					16				17		
	18			19		20			21		
				22	23				24		
25	26	27	28	29							
30						31					
32							33	34	35	36	37
				38	39	40		41	42		
				43				44			
		45	46								
47	48			49			50	51	52	53	54
55				56				57			58
59				60				61			
62				63						64	

TRANSPORTATION

Vans

2017 Dodge Grand Caravan Wheelchair Van with 10" Lowered Floor Ramp Tiedowns **813-569-0729**

Apartments For Rent

Frostproof Villas

140 Pear Ave
Frostproof, FL 33843
863-635-9597
TDD: 711

1&2Bedrooms Available
1 Bedroom \$521-\$663
2 Bedrooms \$587-\$729

Cozy apartments with central a/c & heat, carpet, tile, washer/dryer hook ups and much more

"This institution is an equal opportunity provider and employer."

Miscellaneous

Become a Published Author. We want to Read Your Book! Dorrance Publishing-Trusted by Authors Since 1920. Book manuscript submissions currently being reviewed. Call for Free Author's Guide **1-844-218-1247**. <http://dorranceinfo.com/florida>

Call Empire Today* to schedule a FREE in-home estimate on Carpeting & Flooring. **Call Today! 1-800-214-0166**

Cross Country Moving, Long distance Moving Company, out of state move. \$799 Long Distance Movers. Get Free quote on your Long distance move **1-800-214-4604**

DENTAL INSURANCE. Call Physicians Mutual Insurance Company for details. NOT just a discount plan, REAL coverage for 350 procedures. 855-404-2263 or <http://www.dental50plus.com/cpf> Ad# 6118 (t) DIRECTV CHOICE All-Included Package. Over 185 Channels! ONLY \$45/month (for 24 mos.) Call Now - Get NFL Sunday Ticket FREE! **CALL 1-877-808-9508** Ask Us **How To Bundle & Save!**

Financial

Attention all homeowners in jeopardy of foreclosure! We can help stop your home from foreclosure. The Foreclosure Defense helpline can help save your home. The Call is absolutely free. **1-800-506-3363**

Behind on your MORTGAGE? Denied a Loan Modification? Bank threatening foreclosure? CALL Homeowner Protection Services now! New laws are in effect that may help. Call Now **1-844-720-2118**

Financial Benefits for those facing serious illness. You may qualify for a Living Benefit Loan today (up to 50 percent of your Life Insurance Policy Death Benefit.) Free Information. **CALL 1-844-686-5742**

Health/Medical

Do you use a CPAP machine for sleep apnea? Get your FDA approved CPAP machine and supplies at little or no cost! Free sleep supplement and sleep guide included! **Call 844-359-1121**

FDA-Registered Hearing Aids. 100% Risk-Free! 45-Day Home Trial. Comfort Fit. Crisp Clear Sound. If you decide to keep it, **PAY ONLY \$299 per aid.** FREE Shipping. Call Hearing Help Express **1- 877-442-6921**

Lung Cancer? And Age 60+? You and Your Family May Be Entitled to Significant Cash Award. **Call 1-855-635-9214 for Information.** No Risk. No Money Out of Pocket.

Automobiles

2010 Ford Fusion Hybrid 2nd owner 33 mpg very clean too many extras to list \$5,550.00 **863 845 5112**

A-1 DONATE YOUR CAR FOR BREAST CANCER! Help United Breast Foundation education, prevention & support programs. **FAST FREE PICKUP - 24 HR RESPONSE - TAX DEDUCTION 1-855-758-6966**

CASH FOR CARS! We buy all cars! Junk, high-end, totaled - it doesn't matter! Get free towing and same day cash! **NEWER MODELS too!** **Call 1-833-238-0340**

DONATE YOUR CAR FOR BREAST CANCER! Help United Breast Foundation education, prevention & support programs. **FAST FREE PICKUP - 24 HR RESPONSE - TAX DEDUCTION 1-844-513-9098**

CLASSIFIEDS GET RESULTS!

Help Wanted

J. Hernandez Harvesting, Inc. is hiring 4 Ag Equipment Operators to operate equipment used to harvest crops in Polk County, FL for a temporary period starting on 05/10/2019 and ending on 06/05/2019. Three (3) months of verifiable work experience operating ag equipment are required. The wages offered are the highest of \$11.24/hr. or applicable piece rates. Must have the correct type of license required by State and Federal laws. All drivers will be required to have a CDL license, and drivers responsible for transporting workers will be required to have a valid and unexpired Federal Farm Labor Contractor or Federal Farm Labor Contractor Employee Registration with driving authorization. Will be responsible for operating the buses used to move crops from the field to the packinghouse and storage facility. Must be able to safely operate the buses that are used to transport workers to and from work sites. Should be able to provide proof of accident-free driving record and background. Workers must be able to lift 70lbs. to shoulder height repetitively throughout the workday and able to lift and carry 70lbs. in field. Employer guarantees work will be available for at least three-quarters of the period stated. Required tools supplies, and equipment will be provided at no cost to worker. Housing will be available for workers who cannot reasonably return home after each working day. Transportation and subsistence expenses will be provided, or reimbursed after 50% of the work contract is completed, if appropriate. **Applicants can apply at their local SWA/CareerSource Office, or at the State Workforce Office located at the CareerSource Polk 309 N Ingraham Ave, Lakeland, FL 33801, (863) 508-1100 . Job Order Number: FL10883893.**

J. Hernandez Harvesting is hiring 50 farmworkers to cultivate and harvest watermelon crops in Polk County, FL for a temporary period starting on 05/10/2019 and ending on 06/05/2019. The wages offered are the highest of \$11.24/hr. or applicable piece rates. This job requires prolonged standing, bending, stooping, and reaching. Job is outdoors and continues in all types of weather. Workers must be able to lift 70lbs. to shoulder height repetitively throughout the workday and able to lift and carry 70lbs. in field. Employer guarantees work will be available for at least three-quarters of the period stated. Required tools supplies, and equipment will be provided at no cost to worker. Housing will be available for workers who cannot reasonably return home after each working day. Transportation and subsistence expenses will be provided, or reimbursed after 50% of the work contract is completed, if appropriate. **Applicants can apply at their local SWA/CareerSource Office, or at the State Workforce Office located at the CareerSource Polk 309 N Ingraham Ave, Lakeland, FL 33801, (863) 508-1100. Job Order Number: FL10883819.**

AFFORDABLE ADVERTISING!

863.533.4183

CLASSIFIEDS GET RESULTS!

CLASSIFIEDS



Help Wanted



Public Notice

NOTICE OF PUBLIC SALE

Extra Space Storage will hold a public auction to sell personal property described below belonging to those individuals listed below at the location indicated.

Extra Space Storage 1492

@ 1012 US Highway 92 Auburndale, FL 33823 (863)-221-0007
(May 8, 2019 11:00AM)

- | | | |
|-------|------------------|-----------------|
| I0508 | Charlene Holmes | Household Goods |
| D0338 | Carl Tickle | Household Goods |
| I0549 | Jessica Eason | Household Goods |
| F0706 | Jessica Anderson | Household Goods |

Extra Space Storage 1596

@ 2930 US Hwy 98 N Lakeland FL 33805 (863) 224-2677
(May 8, 2019 @ 12:00 PM)

- | | | |
|------|---------------------|------------------|
| 1217 | Shasta Shaw | Household goods |
| 5407 | Melissa Ragonese | Household goods |
| 5010 | Zaza Tsulaia | Furniture, boxes |
| 5210 | George Phillips | Household goods |
| 1007 | Katie Smith | Household goods |
| 1112 | Shamekia Burkes | Household goods |
| 5040 | Jazzmine Oneal | Household goods |
| 2218 | Lloyd Washington Jr | Household goods |
| 5107 | Jon Caldwell | Household goods |

Extra Space Storage 1494

@ 6445 S Florida Ave Lakeland FL 33813
(863) 647-4172

(May 8, 2019 @ 12:30 PM)

- | | | |
|-------|--------------------------|--------------------------------------|
| P1518 | Ralph Mervine | Household goods |
| A0105 | Faith Celebration School | Desk, filing cabinets, books |
| N1258 | Nosleidys Soler | Computers, office supplies |
| O1308 | Brandon Lovelace | Furniture & boxes of household goods |
| C0414 | Keven Cooper | Household items |

Extra Space Storage 1493

@ 2190 Harden Blvd, Lakeland FL 33803 (863)-680-8092
(May 8, 2019 @ 1:00 PM)

- | | | |
|-------|------------------|-----------------|
| 0431 | Tina Majus | Household goods |
| C0469 | Brittany Harrell | Household goods |
| F0972 | Charlene Brown | Household goods |

The auction will be listed and advertised on www.storagetreasures.com. Purchases must be made with cash only and paid at the above referenced facility in order to complete the transaction. Extra Space Storage may refuse any bid and may rescind and purchase up until the winning bidder takes possession of the personal property. 4/17,27, 2019

Wayne County Blueberry Growers Association –179 Temporary workers needed in Wayne and Covington Counties in MS and Washington and St. Stephens Counties in AL from 5/1/2019 – 7/5/2019. Names and locations for each member of the association can be obtained from the SWA in the states for MS, AL, FL, and LA. Applicants must be 18 years or older. Employer may conduct a criminal background check on new applicants. Workers may manually plant, cultivate, harvest, process and pot, blueberry plants. All tools, supplies, and equipment will be provided at no cost to the workers. Wash hands before entering work areas (fields and processing house) as detailed by government regulations. Obey all farm rules posted on farm. Must have worked a season picking and packing similar crops such as fresh blueberries, raspberries, or coffee beans or have 3 months experience in picking and packing, planting, harvesting similar crops such as fresh blueberries, raspberries, or coffee beans. Mechanical Picker: Loading fruit lugs on Mechanical Picker for harvesting fruit. May ride Mechanical Picker monitoring the lugs as fruit is filling them. Lift and stack filled lugs into stacks on Mechanical Picker until picked up by ATV with trailer. Transfer filled lugs on mechanical picker onto ATV with Trailer for transporting fruit out of field. Load fresh fruit lugs onto Mechanical Picker for harvesting. Field pickers: Workers will be required to walk in the field and fill 1-gallon buckets with blueberries. Place fruit carefully in bucket and place under bush for pickup. Workers that pick up fruit in buckets or lugs out of field weighing approximately 10-40 lbs. May drive ATV with trailer to field, load filled fruit lugs/buckets onto trailer, and place a top cover over lugs and buckets preparing for transporting fruit to processing facility. Transport to processing facility unload and place on pallets. Processing Facility: Load and Unload filled fruit lugs and palletize for wind tunnel. Place into wind tunnel for cooling before entering processing line. Removal from wind tunnel to processing line. Lift and pore fruit onto cleaner and blower. Stand at grading table or conveyer belt for (inspection) of quality fruit. When processing is complete, workers will then load the trailer with flats of berries. Packing machine monitoring for filling fruit into clamshell and clamshell refilling. Packing clamshells of fruit into boxes (flats) for sale. Lift and stack onto pallets. Use pallet jack to load fruit onto truck/trailer for transportation to drop station. General Specifications and Physical Requirements of the Job: Workers will be trained on applying fertilizers and pesticides. Hours and days of work may vary due to weather conditions: blueberries are perishable and must be picked and packed within a limited time of harvest. Workers should expect periods of little/no work because of weather/crop/ other conditions beyond the employer's control. A Standard workweek is 5 hours a day Sunday through Saturday. No cell phone usage during working hours. No smoking, chew tobacco, in fields or packing house. Due to possible Date of Need changes, worker is required to purchase travel insurance if available. We will reimburse the worker for transportation cost (including travel insurance) and subsistence to the employers work site from the place of recruitment upon completion of 50 percent of the contract period. Transportation payment will be no less (and is not required to be more) than the most economical and reasonable common carrier transportation charges for the distances involved. If the employee is unable or unfit to perform the duties listed after the 3 day pretrial, the employee will receive warnings, hours may be reduced to the minimum allowed in the certified petition or terminated. There is a possibility of earning a higher piece rate. Raises and end of the season bonuses may be offered to any seasonal worker, at the employer's discretions, based on individual factors including but not limited to, performance, experience, number of hours worked in the season, number of seasons worked with the company, adherence to work rules and ability to follow supervisor instructions. A copy of the work contract or a copy of the ETA 790 in lieu of a work contract, and any modifications, will be provided to the worker on or before the day, the work commences. Workers performing General Farm Labor will be paid the highest of AL- \$11.13 and MS \$11.33 per hr., or applicable piece rates depending on crop activity, three - fourths guarantee, 35 hrs. Per week. Workers may be offered more than the standard hours of work in a single workday. Workers may volunteer to work additional hours when work is available. Hours of work may increase/decrease depending on crop yield and or weather and can occur at any time throughout the season. Housing and transportation provided at no cost to workers who cannot reasonably return to their permanent residence at the end of each workday. We participate in the E-Verify program and workers must have valid identification for I-9 preparation when they begin work. Complete job description can be found at your local SWA/Job Center. **Apply for this job at the State Workforce/Job Center office in your area, please call for the nearest office in your area MS 601-584-1202, AL 256-259-1835, LA 318-676-7705, FL 863-385-3672, using job order # MS294432.**

Blaxton, LLC -2 Temporary workers needed in Slocomb, Dothan, and Hartford AL. From approximately 05/21/2019 – 07/19/2019. Applicants must be 18 years or older. Applicants must have 1 month in farm experience. Company may conduct criminal background checks. Assist with Good Agricultural Policies. Employer is a drug-free workplace. Drug testing is conducted post-hire at the employer's expense and is not part of the interview process. Results are required before starting work. All tools, supplies, and equipment will be provided at no cost to the workers. Either workers will ride on, or walk behind the mechanical blueberry harvester to ensure the correct operation of the mechanical harvester occurs. Full lugs will be removed from the harvester and replaced with empty lugs without disrupting the operation of the harvester. Stack full lugs onto pallets and load pallets into trailers in the field. Blueberries should only be mechanically harvested during the cooler and less humid evening hours when there is no dew present. Blueberries may also be harvested by walking through assigned rows while bending and reaching to pick ripe blueberries by hand without bruising or damaging the fruit or bush. Workers must use care to pick bushes clean of all berries of the correct color and size, as instructed by their supervisor. Green berries must not be picked. When picking blueberries by hand, workers will either carefully place picked berries into clamshells or into buckets. Record fruit information as instructed. When harvest activities are complete, workers may prune the blueberry bushes using hand clippers. Watermelons-When harvesting watermelons, workers will walk in a designated area selecting mature watermelons to be cut from the vines using a knife. Workers will then bend and lift cut watermelons, carry and load them onto or transport vehicles. Install, maintain and operate irrigation equipment. Clear and maintain fields and irrigation ditches. Using approved vehicles, licensed drivers may transport workers to town, housing and worksites. Work requires performing prolonged walking, bending, reaching, twisting, pushing, pulling and continuously lifting, carrying and loading of 8 lbs. and up to 50 lbs. overhead, physical stamina and hand dexterity and work outside in extremely hot (100°+) and/or wet weather for extensive periods of time. Workers are expected to possess the skills to work in the production of crops listed in this job order. Workers must adhere to all safety rules as instructed by the supervisor. Workers must take care to handle tools, equipment and product in a manner to avoid injury or damage. The employer will comply with all federal, state and local safety requirements. Operations specifications can change during the season due to crop or market condition. Proper work attire is required. No cell phone on the job. Due to possible Date of Need changes, worker is required to purchase travel insurance if available. We will reimburse the worker for transportation cost (including travel insurance) and subsistence to the employers' work site from the place of recruitment upon completion of 50 percent of the contract period. Transportation payment will be no less (and is not required to be more) than the most economical and reasonable common carrier transportation charges for the distances involved. A copy of the work contract or a copy of the ETA 790 in lieu of a work contract, and any modifications, will be provided to the worker on the day the work commences. If the employee is unable or unfit to perform the duties listed after the 14 day pretrial, the employee will receive warnings, hours may be reduced to the minimum allowed in the certified petition or terminated. Workers will be paid \$ 11.13 per hour, or applicable piece rates depending on crop activity. ¾ guaranteed, 35 hours per week. Housing, equipment, and transportation will be provided at no cost to workers who cannot reasonably return to their permanent residence at the end of each workday. Workers must have valid identification for I-9 preparation when they report to begin work. Complete job description can be found at your local SWA/Job Center. **Apply for this job at the State Workforce/Job Center Office in your area or call your nearest office. MS 601-584-1202, FL 863-385-3672, GA 912-285-6105, AL 256-259-1835 using job order #2616807.**

10TH ANNIVERSARY



"Swing for the Cure"

Golf Tournament & Cocktail Party

Kick-Off Cocktail Party
 Friday, April 26, 2019 | 5:30pm
 Nora Mayo Hall
 500 Third Street, NW, Winter Haven

Scramble Golf Tournament
 Saturday, April 27, 2019 | 9:00am
 Southern Dunes Golf & Country Club
 2888 Southern Dunes Blvd., Haines City



Cocktail Party Open
to Non-Golf Participants

All proceeds from the 2019 events will go to support the Winter Haven Hospital Cassidy Cancer Center patients.



Featuring Fuzzy Zoeller

Winner of '79 Masters, '84 U.S. Open, 2002 Senior PGA Championship



For More Information, call:

Josh Lewis (863) 287-2106 | WHH Foundation (863) 292-4138
 whhfoundation@baycare.org



Find us on



Marine running marathon for fallen friends crawls to finish

See page 3



Macron wants Notre Dame rebuilt in 5 years

Officials say a frantic rescue effort saved its most precious treasures

By SAMUEL PETREQUIN and THOMAS ADAMSON
ASSOCIATED PRESS

PARIS — The inferno that raged through Notre Dame Cathedral for more than 12 hours destroyed its spire and its roof but spared its twin medieval bell towers, and a frantic rescue effort saved the monument's "most precious treasures," including the relic revered as Jesus' Crown of Thorns, officials said Tuesday.

French President Emmanuel Macron pledged to rebuild the beloved Roman Catholic architectural landmark, and wanted to see it completed within five years.

"We have so much to rebuild," Macron said in a televised address to the nation. "We will rebuild Notre Dame Cathedral even more beautifully. We can do it, and once again, we will mobilize (to do so)."



AP PHOTO

A man is pictured near charred glass windows Notre Dame cathedral Tuesday in Paris. Firefighters declared success Tuesday in a more than 12-hour battle to extinguish an inferno engulfing Paris' iconic Notre Dame cathedral that claimed its spire and roof, but spared its bell towers.

Authorities consider the fire an accident, possibly as a result of restoration work at the global architectural treasure that survived almost 900 years of

tumultuous French history but was devastated in the blaze on the second day of Holy Week.

Paris prosecutor Remy Heitz said the inquiry into the fire

would be "long and complex." Fifty investigators were working on it and would interview workers from five companies hired for the renovations to

the cathedral's roof, where the flames first broke out.

Heitz said an initial fire alert

REBUILD | 3

FBI search for woman who threatened Columbine High School



AP PHOTOS

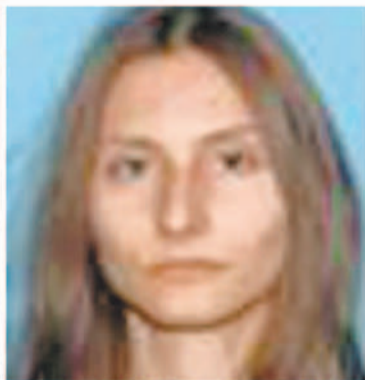
A student leaves Columbine High School late Tuesday, Littleton, Colo. Following a lockdown at Columbine High School and other Denver area schools, authorities say they are looking for a woman suspected of making threats.

Threats are days before the 20th anniversary of a mass shooting

LITTLETON, Colo. (AP) — Authorities said Tuesday they are looking for an 18-year-old woman suspected of making threats against Columbine High School, just days before the 20th anniversary of a mass shooting that killed 13 people.

The information prompted a lockdown at the high school and several others outside Denver. All students were safe, school officials said.

Sol Pais traveled to Colorado on Monday night and made threats against the schools, the Jefferson County Sheriff's Office and the FBI said. Officials didn't



This combination of undated photos released by the Jefferson County Sheriff's Office shows Sol Pais.

provide further details about the threats or say where she was from.

Pais was last seen in the foothills west of Denver, was considered armed and extremely dangerous and should not be approached.

The doors were locked at Columbine and more than 20 other schools in the Denver

area as the sheriff's office said it was investigating threats against schools related to an FBI investigation.

Students left classes on time, but after-school activities were canceled at Columbine in Littleton, Colorado.

Teenage gunmen attacked Columbine on April 20, 1999, killing 12 classmates and a teacher.

Trump to allow lawsuits over US properties seized in Cuba

Properties were seized from Americans after the island's 1959 revolution

By DEB RIECHMANN and MICHAEL WEISSENSTEIN
ASSOCIATED PRESS

WASHINGTON — Stepping up pressure on Cuba, the Trump administration will allow lawsuits against foreign companies doing business in properties seized from Americans after the island's 1959 revolution, a senior administration official said Tuesday.

The move marks a change in more than two decades of U.S. policy on Cuba.

President Donald Trump has been taking steps to isolate embattled Venezuela. President Nicolas Maduro, who is holding power with help from other countries, including Cuba, China and Russia. The new policy against Havana could deal a severe blow to Cuba's efforts to draw foreign investment, and spawn international trade disputes between the U.S. and Europe.

The administration official who provided details of the shift spoke on condition of anonymity ahead of the official announcement by the State Department.

After that announcement, national security adviser John

Bolton is expected to discuss the new policy during a speech Wednesday in Miami, which is home to thousands of exiles and immigrants from Cuba, Venezuela and Nicaragua.

The speech at the Bay of Pigs Veterans Association is to be delivered on the 58th anniversary of the United States' failed 1961 invasion of the island, an attempt to overthrow the Cuban government.

Johana Tablada, Cuba's deputy director of U.S. affairs, said on Twitter: "Before they try to euphorically ride a wave of wickedness and lies, they should take a dose of reality. The world has told John Bolton and the U.S. government to eliminate the criminal blockade against Cuba and the Helms-Burton Act."

The 1996 act gave Americans the right to sue the mostly European companies that operate out of hotels, tobacco factories, distilleries and other properties that Cuba nationalized after Fidel Castro took power. The act even allows lawsuits by Cubans who became U.S. citizens years after their

CUBA | 3

Better Hearing Means Better Wellness

Improve your ability to follow conversation in noisy environments with less stress. Specializing in Oticon and Widex products.

Call 941-214-9887 to experience better hearing today!



Grant Stevens, HAS
Serving Port Charlotte
and Punta Gorda for
over 15 years

\$1,000 OFF
premium Oticon Opn devices
Offer expires 4/30/2019



2866 Tamiami Trl, Ste D | Port Charlotte, FL 33952

www.Deltahearing.com

Rescued at sea



PHOTO BY VITISAK PAYALAW VIA AP

In this Friday, photo, a dog sits on an oil rig after being rescued in the Gulf of Thailand. The dog found swimming more than 135 miles from shore by an oil rig crew in the Gulf of Thailand was returned safely to land. Vitisak Payalaw, stationed on the rig belonging to Chevron Thailand Exploration and Production, said on his Facebook page the dog was glimpsed Friday swimming towards the platform.

NASA's TESS discovers its first Earth-size planet

By KASSIDY VAVRA
NEW YORK DAILY NEWS

NASA'S Transiting Exoplanet Survey Satellite (TESS) has discovered its first Earth-size planet.

The planet, named HD 21749c, is around 89% of Earth's diameter, and is 53 light-years away. Its surface is likely rocky and hot, with temperatures that could reach up to 800 degrees Fahrenheit.

It likely takes the Earth-size planet orbits the K-star HD 21749, which is around 70% of the size of the sun. It circles very close to its star, and likely takes a little under eight days to orbit.

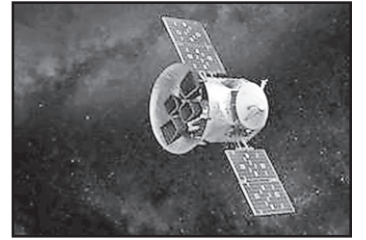
This is the 10th planet discovered by TESS, and the second in the southern constellation Reticulum where HD 21749c and the K-star are located.

TESS also discovered a planet called HD 21749b,

which completes orbit in 49 days, as stated in a report on the discovery published in the journal, *The Astrophysical Journal Letters*. The mini Neptune-like planet completes orbit in around 36 days.

Scientists from the Massachusetts Institute of Technology and the Carnegie Institution for Science used transit data from the first four sectors of TESS' observations and noticed 11 "periodic dips in the star's brightness," indicating the presence of a planet.

Launched April 18, 2018, on a SpaceX Falcon 9 rocket, TESS will survey 200,000 of the brightest stars closest to the sun in search of planets over a two-year period, according to NASA. The mission divides the area of the sky into 26 sectors, which are 24 degrees by 96 degrees across. Of the thousands of planet candidates, around 300 are expected to be



NASA VIA AP

Illustration of NASA's Transiting Exoplanet Survey Satellite: TESS.

"Earth-sized and super-Earth sized exoplanets," according to NASA.

The report on the discoveries called the system a "prime target" for comparative studies on planet and system makeup.

Follow-up studies "could provide critical information about the planet's properties, including potentially the first mass measurement of an Earth-size planet found by TESS," a statement said.

Russian support for Stalin surges poll shows

By ILYA ARKHIPOV
BLOOMBERG NEWS

MOSCOW— Respect among Russians for Josef Stalin has surged to the highest level of President Vladimir Putin's era, with 70% saying his rule had been good for the country, according to a poll tracking attitudes toward the Soviet dictator.

A record 51% viewed Stalin positively in March, up from 40% a year earlier, the survey published Tuesday by the Moscow-based Levada Center showed. The proportion regarding him with admiration, respect or sympathy was the highest since it began the survey in April 2001, Levada said on its website.

"Nostalgia over the collapse of the Soviet Union is at a peak this year. In addition, Stalin is seen as a figure who ensured social justice," something Russians are

increasingly seeking amid discontent with falling living standards said Karina Pipia, an analyst at Levada. Even so, the people who admired Stalin "don't really want to go back to those times," she said.

Russians were more willing to defend the mass killings and political persecutions that accompanied Stalin's 31-year rule until his death in 1953, according to the survey. Some 46% agreed that repressions were "definitely" or "in some way" justified by the results achieved under Stalin, up from 36% in 2017 and the highest level since the question was first posed in 2008. Another 45% said progress under Stalin didn't justify the repressions.

The rise in Stalin's standing follows Kremlin efforts to play down his tyranny in school history books and recast him as a modernizer who transformed the Soviet Union into

a superpower through rapid industrialization and victory in World War II. It comes amid deepening disenchantment among Russians with Putin, the longest-serving Kremlin ruler since Stalin, following the unpopular increase in the pension age last year. There's also growing hardship after five straight years of declining consumer incomes.

The March 21-27 survey of 1,600 people had a margin of error no greater than 3.4 percentage points. An increase of 12 percentage points in the proportion expressing respect for Stalin explained the jump in his ratings this year according to Levada.

An "irrational romanticization of the Soviet past and of the figure of Stalin" was expressed not only by older people in the poll but also by those aged under 25 who didn't live in the communist era, Pipia said.

Dog found swimming 135 miles off Thailand

BANGKOK (AP) — A dog found swimming more than 135 miles from shore by workers on an oil rig crew in the Gulf of Thailand has been returned safely to land.

A worker on the rig belonging to Chevron Thailand Exploration and Production, Vitisak Payalaw, said on his Facebook page that they saw the dog swimming toward the platform last Friday. He said they were lucky to spot it because if there had been waves it probably would not have been visible.

The dog made it to the platform, clinging to the support structure below deck without

barking or whimpering, Vitisak wrote.

The crew managed to lower a rope and secure it around the dog's neck and haul it up. Vitisak said they speculated the dog might have fallen off a fishing trawler, and dubbed it "Boon Rod," or "Survivor."

The dog was delivered by boat to the southern port of Songkhla on Monday and was declared in good shape after being taken to the animal protection group Watchdog Thailand.

Vitisak said if the dog was unclaimed, he would like to take it to his home in northeast Thailand.

Bill would hike smoking, vaping age from 18 to 21 in Florida

Legislation approved by a state House committee now moves to House floor

By CURT ANDERSON
ASSOCIATED PRESS

TALLAHASSEE, Fla. — The minimum age for Floridians to possess tobacco and vaping products that deliver nicotine would rise from 18 to 21 under legislation a state House committee readied Tuesday for a floor vote.

The measure that cleared the House Appropriations Committee would also establish 21 as the minimum age for smokable forms of medical marijuana. Members of the military would be exempt from all such age restrictions.

Sponsors say the bill would improve public health and reduce the

costs that government programs such as Medicaid incur for treating cancer, heart disease and other smoking-related illnesses. They say the health effects of vaping are largely unknown and that the increasingly popular practice could become a gateway to tobacco for young people.

"Almost all adult smokers started smoking when they were kids," said Democratic Rep. Nicholas Duran of Miami, one of the main sponsors. "This bill substantially decreases their access by cutting off their source."

A 2015 study sanctioned by the U.S. Food and Drug Administration concluded that raising the age for



JOHN HOPKINS MEDICINE PHOTO

Roughly 60 percent of those who vape are under the age of 25.

tobacco use from 18 to 21 nationally would result in 223,000 fewer early deaths, 50,000 fewer deaths from lung cancer and 4.2 million fewer years of life lost, according to a legislative staff analysis.

"Raising the age to use

tobacco is the deciding factor. We know what it does," said Rep. Joe Geller, a Dania Beach Democrat.

GOP Rep. Randy Fine of Palm Bay added that in Florida alone the annual cost to taxpayers of treating smoking-related

illnesses through the Medicaid program is close to \$4 billion.

"The debate is not just about freedom. What crosses the line for me is when I'm asked to pay for other people's liberty," Fine said.

The vaping industry and some health groups object to being included with tobacco in the age limitation, arguing that e-cigarettes and similar products can help people quit or avoid smoking tobacco altogether.

"Vapor is not a tobacco product. We sell a product to help people quit smoking, not to continue smoking," said Michael Miller, owner of a vape shop in Jacksonville.

The FDA, however, also reported that in 2018, more than 4.9 million middle and high school students were using e-cigarettes and that one in four high school seniors were using them.

Still, Rep. Holly Raschein, a Key Largo Republican, said she is concerned about too much government overreach.

"I think this bill attempts to dump government on the people. The libertarian in me says, 'Whoa, whoa, whoa, let's tap the breaks,'" Raschein said.

But the legislation was approved with only two no votes and now heads to the House floor. A companion bill is moving in the Senate.

HEADLINES AROUND THE STATE

Sheriff: Landlord shoots renter during argument in Tampa

TAMPA (AP) — Authorities say a landlord shot a 64-year-old man who rents a room from him in Tampa.

Hillsborough County Sheriff's Maj. Frank Losat told news outlets that the 28-year-old landlord called 911 around 8:30 a.m. Tuesday to report that he'd shot someone during an argument. Losat didn't say what started the argument.

Deputies arrived at the home and found the older man with "numerous" gunshot wounds.

Losat says the victim was taken to a hospital and then airlifted to another one. He was in critical condition.

The landlord was taken into custody and Losat says he is cooperating with investigators.

Investigators say the man had been renting the room for about seven months.

Family says funeral home may have dumped father's cremains

BOCA RATON (AP) — For six years, a Florida family thought they had their patriarch's ashes in an urn sitting on a mantle. But maybe not.

The daughter and widow of Robert Nero Sr. learned recently that ashes and a metal disk identifying them as his were found dumped in bushes at a West Palm Beach YWCA.

Sitting next to the urn in their lawyer's office Tuesday, Nero's widow, Corene, and his daughter, Gloria Nero Rolle, said they haven't gotten answers from the funeral home that handled

the cremation.

Stevens Brothers Funeral Home in Belle Glade, Florida, told The Associated Press the Nero family has their father's ashes.

Miami Dade College mortuary science professor Joseph Finocchiaro says DNA is almost always destroyed during cremation, so the ashes are likely unidentifiable.

Man accused of firing pee-filled squirt gun at woman

GULFPORT (AP) — Authorities in Florida say a 71-year-old man filled a squirt gun with urine and sprayed a woman who was walking her dog.

Gulfport police said in an arrest report that Joel William Benjamin approached the

woman on Sunday and squirted her several times with urine.

The report says Benjamin told officers he would "do it again," but it was unclear what motivated the attack.

He faces a misdemeanor battery charge and left jail after posting a \$500 bond. A lawyer for Benjamin wasn't listed on jail records.

Gulfport is near St. Petersburg on Florida's Gulf Coast.

Judge allows video of face-biting suspect as evidence

STUART (AP) — A judge will allow as evidence a video of a former college student struggling against his restraints at a Florida hospital on the night he's accused of killing two people.

Austin Harrouff's attorneys say the video shows the "mental

status" of the 22-year-old hours after he's accused of killing 59-year-old John Stevens III and 53-year-old Michelle Mishcon. Police say the Florida State University student was found biting and chewing on Stevens' face in the couple's driveway.

Harrouff is charged with two counts of first-degree murder.

TC Palm Monday's hearing centered on 1:14 seconds of video described in a defense motion as Harrouff in his hospital bed "fighting against his restraints."

Forensic psychologist Dr. Phillip Resnick has said Harrouff believed he was "half-dog, half man" when he attacked the couple.



HARROUFF

Banks lead US stocks to slight gains amid mixed earnings

By ALEX VEIGA
AP BUSINESS WRITER

Stocks closed slightly higher on Wall Street Tuesday, erasing the market's modest losses from a day earlier. The gains, which followed a rally in overseas stock indexes, came as investors sized up the latest batch of company earnings reports.

Financial stocks led the way higher as bond yields rose, which drives interest rates higher, enabling banks to make more money on loans. BlackRock and Progressive led the sector after each company reported solid quarterly results. Qualcomm powered technology sector stocks higher, notching its best day in 20 years, on news

the chipmaker and Apple settled their bitter legal dispute. Investors are looking to the latest wave of corporate earnings reports over the next few weeks for clues about the health of the global economy and the prospects for company profits this year. Analysts expect the first-quarter results for S&P 500 companies

overall to be the weakest in nearly three years. "The markets are prepared for this year-over-year decline that everyone is expecting in earnings," said Erik Davidson, chief investment officer at Wells Fargo Private Bank. "Unless we have some significant misses, we should be doing OK." The S&P 500 rose 1.48 points, or 0.1 percent,

to 2,907.06. The Dow Jones Industrial Average gained 67.89 points, or 0.3 percent, to 26,452.66. The Nasdaq composite added 24.21 points, or 0.3 percent, to 8,000.23. The index had not closed above 8,000 points since October. The Russell 2000 index of small-cap stocks picked up 3.62 points, or 0.2 percent, to 1,582.79.

Marine running marathon for fallen friends crawls to finish

He crawled the final 100 yards

By JOHN SEEWER
ASSOCIATED PRESS

A Marine veteran said all he was thinking about as he crawled to the finish of the Boston Marathon was the men who died after an attack on their convoy in Afghanistan nine years ago. Their names were written on his hand, his shoes and his race bib. They were the inspiration, Micah Herndon said, when he first started running to escape the horrors of war. Herndon said he never considered giving up even when his legs started giving out about 4 miles from the end of the race Monday. "That was the longest 4.2 miles I've ever run in my life," said Herndon, who's from Tallmadge, Ohio.

He said his military training kicked in when he dropped to his hands and knees and crawled, at times pulling himself on his stomach, for the final 100 yards. "It was kind of second nature," he said Tuesday, a day after finishing his third marathon. "They instill 'adapt and overcome.' Any situation you're in, that's what you do." During the marathon, Herndon, 31, said he repeated the names of three men — Marines Mark Juarez and Matthew Ballard and British journalist Rupert Hamer — mile after mile. Juarez and Hamer were killed when a roadside bomb exploded in January 2010. Ballard, who was severely injured, died after returning home. Herndon was in that convoy, but his vehicle wasn't hit.



AP PHOTO

Micah Herndon, of Tallmadge, Ohio, crawls to the finish line in the 123rd Boston Marathon on Monday in Boston.

Repeating their names is something Herndon does when he's training or competing in a race, even when he gets strange looks from other runners. Herndon, who was injured in another blast in 2010, got into running after coming home as a

way to deal with post-traumatic stress. He hopes he can inspire other veterans. "It's hard to reintegrate into society and be a civilian," he said. "My message to other veterans is to find whatever your release is. My release happens to be running."

REBUILT

FROM PAGE 1

was sounded at 6:20 p.m. Monday but no fire was found. The second alert was sounded at 6:43 p.m., and the blaze was discovered on the roof. Investigators have already questioned nearly 30 people, said a Paris judicial police official, speaking on condition of anonymity in order to comment on an ongoing probe. "Notre Dame has survived the revolutionary history of France, and this happened during building works," said influential former Culture Minister Jack Lang. News that the fire was probably accidental has done nothing to ease the national mourning for the symbol of national pride. Hundreds of people gathered for a vigil prayer across the Seine from the cathedral, singing and listening to music by a string quartet. Interior Minister Christophe Castaner said there were still some risks to the structure and that it was "under permanent surveillance because it can still budge."

A plan to safeguard the masterpieces and relics was quickly put into action after the fire broke out. The Crown of Thorns, regarded as Notre Dame's most sacred relic, was among the treasures quickly transported after the fire broke out, said Deputy Mayor Emmanuel Gregoire. Brought to Paris by King Louis IX in the 13th century, it is purported to have been pressed onto Christ's head during the crucifixion. Also saved was the tunic of St. Louis, a long, shirt-like garment from the 13th century, said Culture Minister Franck Riester. The cathedral's famous 18th century organ that boasts more than 8,000 pipes also survived. "The works of art, the most precious treasures were secured last night," Riester told reporters, thanking teams from city hall, the culture ministry, firefighters and the bishopric who worked to save

Notre Dame devastation

A catastrophic fire engulfed the Notre Dame Cathedral as it was undergoing renovations Monday, threatening one of the greatest architectural treasures of the Western world. The 12th-century cathedral is home to incalculable works of art and history. Below are some of the saved and destroyed pieces from the inferno.

TOWERS
North, South towers and west rose window: Intact

ROOF
Oak timber framed roof with trees cut between 1160 and 1170: Collapsed

SPIRE
The original had been removed in 1786 and rebuilt in the 19th century; 16 copper statues (12 apostles and four evangelists) surrounding the spire were removed as part of the renovation: Collapsed

ROSE WINDOWS
The three rose windows. The earliest window, on the west facade of the cathedral, dates back to 1225. The north and south roses were created in 1250 and 1260, respectively: Appear intact

INVALUABLE ARTIFACTS
The Crown of Thorns, believed to be a relic of the Passion of Christ: Saved

HIGH ALTAR
The stained glass chancel windows: Appear intact

Altar and golden cross: Appear intact

Source: AP, BBC, ZUMA, Google Earth
Graphic: Staff, TNS

the items. Some of the works were being transferred from City Hall to the Louvre, where they will be dehumidified, protected and eventually restored. The minister said the cathedral's greatest paintings would be removed starting Friday. The 3-meter-tall copper statues that looked over Paris from Notre Dame's 96-meter peak already had been removed from the roof

days ago and sent to southwestern France as part of a 6 million-euro (\$6.8 million) renovation on the spire and its 250 tons of lead. Much was saved in the interior too. The only major work damaged inside was the cathedral's high altar, installed in 1989 under Cardinal Jean-Marie Lustiger. It was hit when the spire collapsed, said Laurent Prades, heritage director for Notre Dame.

"We have been able to salvage all the rest," said Prades, who watched the recovery overnight. "All the 18th century steles, the pietas, frescoes, chapels and the big organ are fine." The three large stained-glass rose windows, among the most famous parts of the cathedral, were not destroyed, but might have been damaged by the heat and will be assessed by an expert, he added.

CUBA

FROM PAGE 1

properties were taken. Canada, France, Spain, Great Britain and other countries with large investments in Cuba have ferociously protested the law and threatened to sue in the World Trade Organization if Washington tries to interfere with the business ties between Cuba and another sovereign nation.

"The extraterritorial application of the U.S. embargo is illegal and violates international law," said Alberto Navarro, the European Union ambassador to Cuba. "I personally consider it immoral. For 60 years the only thing that's resulted from the embargo is the suffering of the Cuban people." U.S. airlines and cruise lines that bring hundreds of thousands of travelers to Cuba each year appear

to be exempt from the key provision of the Helms-Burton Act. Every U.S. president since Bill Clinton has suspended the key clause to avoid those trade clashes and a potential mass of lawsuits that would prevent any future settlement with Cuba over nationalized properties. Cuba has said it is willing to reimburse the owners of confiscated properties, but only if the communist government is also

reimbursed for billions of dollars in damages generated by the six-decade U.S. trade embargo. The announcement comes at a moment of severe economic weakness for Cuba, which is struggling to find enough cash to import basic food and other supplies following a drop in aid from Venezuela, and a string of bad years in other key economic sectors. Foreign investment in Cuba increased slightly

in recent years, but it remains far below the levels needed to recapitalize the island's dilapidated, often collapsing infrastructure. The Trump administration's decision is not expected to drive out major foreign players like Pernod-Ricard of France, which makes Havana Club rum, or Spanish hotel chains Melia or Iberostar, but it could prove a major obstacle to new investment from foreign companies.

ALMANAC

Today is Wednesday, April 17, the 107th day of 2019. There are 258 days left in the year.

Today in history

On April 17, 1972, the Boston Marathon allowed women to compete for the first time; Nina Kuscsik was the first officially recognized women's champion, with a time of 3:10:26.

On this date

In 1492, a contract was signed by Christopher Columbus and a representative of Spain's King Ferdinand and Queen Isabella, giving Columbus a commission to seek a westward ocean passage to Asia. In 1521, Martin Luther went before the Diet of Worms to face charges stemming from his religious writings. (Luther was later declared an outlaw by Holy Roman Emperor Charles V.) In 1861, the Virginia State Convention voted to secede from the Union. In 1961, some 1,500 CIA-trained Cuban exiles launched the disastrous Bay of Pigs invasion of Cuba in an attempt to topple Fidel Castro, whose forces crushed the incursion by the third day. In 1964, Geraldine "Jerrie" Mock became the first woman to complete a solo airplane trip around the world as she returned to Columbus, Ohio, after 29 1/2 days in her Cessna 180. Ford Motor Co. unveiled the Mustang at the New York World's Fair. In 1970, Apollo 13 astronauts James A. Lovell, Fred W. Haise and Jack Swigert splashed down safely in the Pacific, four days after a ruptured oxygen tank crippled their spacecraft while en route to the moon. In 1993, a federal jury in Los Angeles convicted two former police officers of violating the civil rights of beaten motorist Rodney King; two other officers were acquitted.

Today's birthdays

Actor David Bradley is 77. Composer-musician Jan Hammer is 71. Actress Olivia Hussey is 68. Actor Clarke Peters is 67. Rapper Afrika Bambaataa is 62. Actor Sean Bean is 60. Actor Joel Murray is 57. Rock singer Maynard James Keenan is 55. Actress Lela Rochon is 55. Actor William Mapother is 54. Actress Leslie Bega is 52. Actor Henry Ian Cusick is 52. Actress Kimberly Elise is 52. Singer Liz Phair is 52. Director/producer Adam McKay is 51. Rapper-actor Redman is 49. Actress Jennifer Garner is 47. Singer Victoria Adams Beckham is 45. Actress-singer Lindsay Korman is 41. Actress Rooney Mara is 34.

Bible verse

"Therefore being justified by faith, we have peace with God through our Lord Jesus Christ." — Romans 5:1. Are you looking for peace within yourself? God can give it to you. Give your life to Jesus and experience peace within and without.

ODD NEWS

Police video shows robber was really robot vacuum cleaner

BEAVERTON, Ore. (AP) — Authorities have released police body camera video showing the moment when officers in Oregon realized a suspected robber holed up in a bathroom was really a robotic vacuum cleaner. The Washington County Sheriff's Office says deputies discovered the menacing appliance after entering the bathroom with guns drawn. Assisted by a Beaverton canine officer, they had gone to the home after a house sitter called 911 Monday, saying someone was inside the bathroom. Sheriff's Sgt. Danny DiPietro says this encounter was his first "Roomba burglar" in 13 years on the job. He says the office is still having a good laugh about it.

STOCKS LISTING CHANGE - REQUESTS WELCOME! Mutual funds listings will run on Saturdays.

The Sun Newspaper is tweaking the way stocks are listed in the daily paper. We will continue to run a wide range of stocks, but we're trying to eliminate stocks

our readers don't want. If you do not see your stock in the paper, please let us know and we will put it in the listings. Email the name of the company and the symbol to nlane@sun-herald.com, or call 941-206-1138. You can leave the stock name and symbol on voice mail. If you reach voice mail, please leave your contact information so your call can be returned.

Market indicators: DOW 26,452.66 +67.89, NASDAQ 8,000.23 +24.21, S&P 500 2,907.06 +1.48, 10-YR T-NOTE 2.59% +0.04, 30-YR T-BOND 2.99% +0.03, CRUDE OIL \$64.05 +6.65, GOLD \$1,272.60 -14.20, EURO \$1.1288 -0.016

Money&Markets

Combined Stocks From the New York Stock Exchange and the Nasdaq.

Table with columns: P/E Name, Last, Chg. Lists various stock tickers and their price changes.



Stocks Recap

Table with columns: NYSE, NASD, HIGH, LOW, CLOSE, CHG, %CHG, WK, MO, QTR, YTD. Summarizes market performance.

Table with columns: P/E Name, Last, Chg. Lists various stock tickers and their price changes.

Table with columns: P/E Name, Last, Chg. Lists various stock tickers and their price changes.

Table with columns: P/E Name, Last, Chg. Lists various stock tickers and their price changes.

Table with columns: P/E Name, Last, Chg. Lists various stock tickers and their price changes.

Table with columns: P/E Name, Last, Chg. Lists various stock tickers and their price changes.

Table with columns: P/E Name, Last, Chg. Lists various stock tickers and their price changes.

Table with columns: P/E Name, Last, Chg. Lists various stock tickers and their price changes.

Table with columns: P/E Name, Last, Chg. Lists various stock tickers and their price changes.

Table with columns: P/E Name, Last, Chg. Lists various stock tickers and their price changes.

Table with columns: P/E Name, Last, Chg. Lists various stock tickers and their price changes.

Table with columns: P/E Name, Last, Chg. Lists various stock tickers and their price changes.

Table with columns: P/E Name, Last, Chg. Lists various stock tickers and their price changes.

Table with columns: P/E Name, Last, Chg. Lists various stock tickers and their price changes.

Table with columns: P/E Name, Last, Chg. Lists various stock tickers and their price changes.

Table with columns: P/E Name, Last, Chg. Lists various stock tickers and their price changes.

Table with columns: P/E Name, Last, Chg. Lists various stock tickers and their price changes.

Table with columns: P/E Name, Last, Chg. Lists various stock tickers and their price changes.

Table with columns: P/E Name, Last, Chg. Lists various stock tickers and their price changes.

Stock Footnotes: g - Dividends and earnings in Canadian dollars. h - Does not meet continued-listing standards. i - Late filing with SEC. j - Stock was a new issue in the last year. k - Stock has undergone a reverse stock split of at least 50% within the past year. r - Right to buy security at a specified price. s - Stock has split by at least 20 percent within the last year. w - Trades will be settled when the stock is issued. wd - When distributed. wt - Warrant, allowing a purchase of a stock. un - Unit, including more than one security. vj - Company in bankruptcy or receivership, or being reorganized under the bankruptcy law. Appears in front of the name. Stocks in bold are worth at least 5 cents and changed 5 percent or more in price. PE Footnotes: g - Stock is a closed-end fund - no P/E ratio shown. cc - P/E exceeds 99. dd - Loss in last 12 months. Source: The Associated Press.

Unfamiliar condition PGAD comes with a social stigma

DEAR DR. ROACH: I have persistent genital arousal disorder. I find it incredibly difficult to talk about with my doctors and I've been openly mocked for it. I find there is a distinct lack of sensitivity in the medical community about this. People like me genuinely suffer in a variety of ways, whether it is from the physical side effects of being constantly aroused and unable to find relief or from the psychological trauma and stress of being aroused in inappropriate situations, such as funerals and job interviews.



Dr. Roach

Something so simple as a conversation with my own grandmother can be a horrible experience if I am having a symptom flare. I've had humiliating experiences over the years with doctors and nurses who have made inappropriate comments like, "How is this a bad thing?" or from accusations of being some kind of sexual deviant during annual pelvic exams.

People with PGAD are not sexual deviants. We do not enjoy our con-

dition. It's physically painful, disruptive to our everyday lives and embarrassing. It would be sincerely appreciated if you could spread some awareness about PGAD so that sufferers like myself can have a more trusting relationship with our providers. — Anon.

ANSWER: I appreciate your writing, as I think most people — and even some providers — are not familiar with this condition.

PGAD is a state of sexual arousal that is unwelcome, unrelated to desire and unrelieved by sexual intercourse. It is triggered by physical

stimuli, such as traveling in a car, or by psychological stimuli, especially anxiety. It is almost exclusively described in women. Many describe the symptoms as painful.

Some experts note similarities of PGAD and other pain syndromes, including chronic pelvic pain from neuropathy. There also seems to be a connection with restless leg syndrome, for unclear reasons. Many women report a history of sexual abuse. While antidepressants often are used to treat this condition, there also is some evidence that withdrawal from antidepressants can cause or worsen symptoms.

There is no single treatment that is effective for everyone with PGAD. Counseling and medication are used. Cold packs or cold baths have been helpful for some.

If there is a take-home message, it's that people with this condition shouldn't feel bad about it and shouldn't feel embarrassed about it.

DEAR DR. ROACH: My blood pressure drug, losartan, was recently recalled because of

contamination issues with NDEA and NDMA; one is used to make liquid rocket fuel and the other is a byproduct in the manufacture of pesticides. How does this happen? Does the drug company share manufacturing facilities with companies that make these other products? — EG

ANSWER: I read some speculation by chemists on how the contamination could have happened, and it seems to me that one company made a new process for making losartan that, although cheaper and more efficient, allowed contaminants to form unrecognized. Although not recognized until 2018, it could have been happening since 2012. Other companies changed their manufacturing as well, unaware of these toxic impurities.

This is a real problem, not so much because of this current recall, but because it shows the industry lacks enough oversight to quickly identify contamination in generic pharmaceuticals coming from multiple countries.

Wife discovers digital trail left by man having affair

DEAR ABBY: My husband went to his 45th class reunion a state away and hooked up with a classmate. Over the next few months it went from talking and texting to her sending him nude pictures of herself.



Dear Abby

I found her emails professing her love to him. When I asked him, he swore nothing happened between them during the two weeks he was there other than a lunch date.

After further investigation, I have discovered they had more than 30 hours of phone conversations, exchanged 4,000-plus texts and who knows the number of emails.

Not only that, he bought another phone so I could no longer see the interactions on our shared cell account.

He finally admitted they did have a sexual encounter. He has now agreed to end all contact with her and work on our marriage. He has apologized, but I'm struggling to believe him because every time I found damning evidence, he would make up another excuse or blame it all on her. However, he never told her to stop or blocked her.

Is it time to cut my losses, or should I wait to see if he does this again? Why do people think having affairs is a good thing? — Confused In Montana

DEAR CONFUSED: People who think an affair is a good thing for a marriage are deluding themselves. An affair only adds to the problems the couple was trying to ignore.

It's time for you and your husband to make an appointment with a licensed marriage and family therapist.

Marriages can survive infidelity, but it takes time, full disclosure and hard work to rebuild trust. It will happen more quickly with professional help.

If it doesn't work, THEN may be the time to "cut your losses."

Only you can decide whether your marriage has been irretrievably broken.

Stirring up some leftovers

Dear Heloise: Ever have a piece of chicken, a pork chop or a piece of steak left from dinner that's not enough for another meal? I freeze LEFTOVERS and use them in a stir-fry. I let them thaw, cut them into bite-size pieces and mix with vegetables for a meal. — A Reader in North Carolina



Hints from Heloise

Dear Readers: The health benefits of grapefruit are enormous. It's high in fiber and helps regulate digestive juices, and is considered a powerful antioxidant.

Also, grapefruit contains a high level of vitamin C and is believed to help promote sleep. — Heloise

Dear Heloise: I read a woman was having trouble getting the bottom pie crust cooked thoroughly. I put a cast iron skillet in the oven "upside down" when I turn on the oven. Then I place the pie directly on the cast iron skillet, and I have a done crust. — Ramona E., Lubbock, Texas

WHATZIT?

Find the familiar phrase, saying or name in this arrangement of letters.

LOAF & GOAT

SOLUTION: Bread and butter

JUMBLE

Unscramble these Jumbles, one letter to each square, to form four ordinary words.

SHRAB
 ○○○○

DRYAT
 ○○○○

MNYZEE
 ○○○○○○

ASPMUC
 ○○○○○○

©2019 Tribune Content Agency, LLC All Rights Reserved.

○○○○○ ○○○○○○○

THAT SCRAMBLED WORD GAME

By David L. Hoyt and Jeff Knurek



Now arrange the circled letters to form the surprise answer, as suggested by the above cartoon.

(Answers tomorrow)
 Yesterday's Jumbles: MAUVE ELOPE COGNAC JALOPLY
 Answer: The FBI agents wanted the money launderer to — COME CLEAN

KEN KEN

THE LOGIC PUZZLE THAT MAKES YOU SMARTER.

EASY

2÷	2	4+	
	12X	3-	
		7+	
2-		4	

©2019 KenKen Puzzle, LLC www.kenken.com

CHALLENGING

20X		3-		2
11+	72X	3+	12X	
		2÷	1-	
10+	2	1-		
	1	2÷	1-	
2÷		5	5-	

©2019 KenKen Puzzle, LLC www.kenken.com

RULES

- Each row and each column must contain the numbers 1 through 4 (easy) or 1 through 6 (challenging) without repeating.
- The numbers within the heavily outlined boxes, called cages, must combine using the given operation (in any order) to produce the target numbers in the top-left corners.
- Freebies: Fill in single-box cages with the number in the top-left corner.

PREVIOUS ANSWERS

2÷	1	2-	4	3
4+	2	3	1	4
48X	4	1	3	2
	3	4	2	1

©2019 KenKen Puzzle, LLC www.kenken.com

7 LITTLE WORDS

Find the 7 words to match the 7 clues. The numbers in parentheses represent the number of letters in each solution. Each letter combination can be used only once, but all letter combinations will be necessary to complete the puzzle.

- CLUES**
- 1 element of atomic number 17 (8)
 - 2 like a hidden location (11)
 - 3 carefully (8)
 - 4 fast-food breakfast sandwich (8)
 - 5 they have a DMZ between them (6)
 - 6 cajoled through flattery (10)
 - 7 like a well-fitting suit (8)

RE	TE	UND	CHLO	OSD
RINE	FFIN	IL	LY	AS
MINU	BLAN	KO	ISCL	SHED
DI	ED	TA	OR	MCMU

Tuesday's Answers: 1. WISENHEIMER 2. UNFROZEN 3. TWANGS 4. TIGERS 5. SONGBIRDS 6. MISHAPS 7. STALWART

Challenger

DIRECTIONS: Fill each square with a number, one through nine. Horizontal squares should add to the totals on right. Vertical squares should add to the totals on bottom. Diagonal squares through center should add to total in upper and lower right.

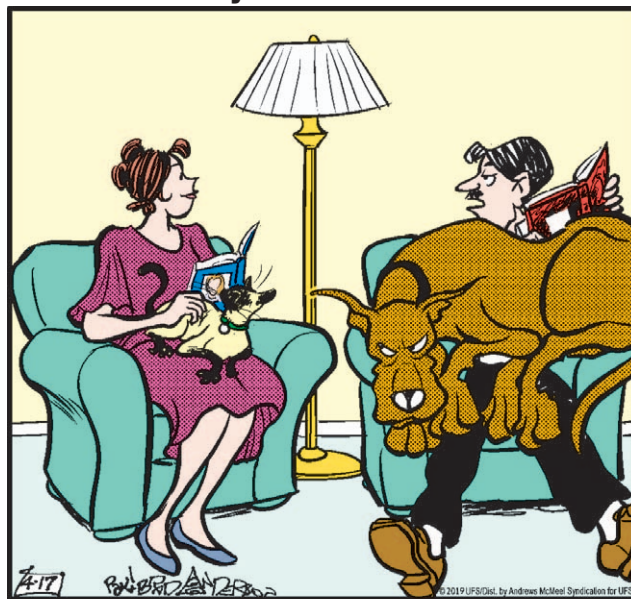
		9		23
	6			26
			8	20
8				35
				20
				23
32	29	29	11	23

© 2019 by King Features Syndicate, Inc. World rights reserved.

Yesterday's Challenger Answers

3	2	2	2	9
1	3	1	1	6
2	1	1	1	5
1	3	2	3	9
7	9	6	7	10

MARMADUKE By Brad Anderson



"Two more minutes and they switch laps."

Cryptoquip

4-17

V L N R Z Y K N Y R N U M M J X K Z

B L U B U E N X B U J R I N B B N X J Z

J R H N N H R Y B U E Y R Z Y R U R B , J Z

B L U B U D Y V N I U D Y V U I ?

Yesterday's Cryptoquip: DON'T YOU THINK THE DRY-ERASE WHITEBOARD WAS A REALLY MARVELOUS INVENTION? IT'S RE-MARKABLE.

Today's Cryptoquip Clue: M equals F

WORD SLEUTH • FIERY WORDS

J H F C A Y W U R P N C N L J

W F H F D B Z X V A R L M F T

F I R E S I D E M O L R R O Q

I R L O R M R E S A O K I O H

R E F D D I R S W T B Z Y R W

E T V T F I F E S R Q O N P L

A R K T (F I R E F I G H T) E I

R A I P R I R H S F D C A R Z

M P M E F I X E W A V U S I R

S A Q O F S K R O W E R I F N

C M G U L P E R I F K C A B K

Tuesday's unlisted clue: SOLAR

Find the listed words in the diagram. They run in all directions - forward, backward, up, down and diagonally. Wednesday's unlisted clue hint: A Building Susceptible to Fire

Backfire	Firearm	Fireproof	Fireworks
Campfire	Firefight	Fireside	Spitfire
Cease-fire	Fireman	Firestorm	Wildfire
Crossfire	Fireplug	Firewall	

©2019 King Features, Inc. 4/17

HOROSCOPE

ARIES (March 21-April 19). If it's too hard to do the right thing, consider that you might be in the wrong place...

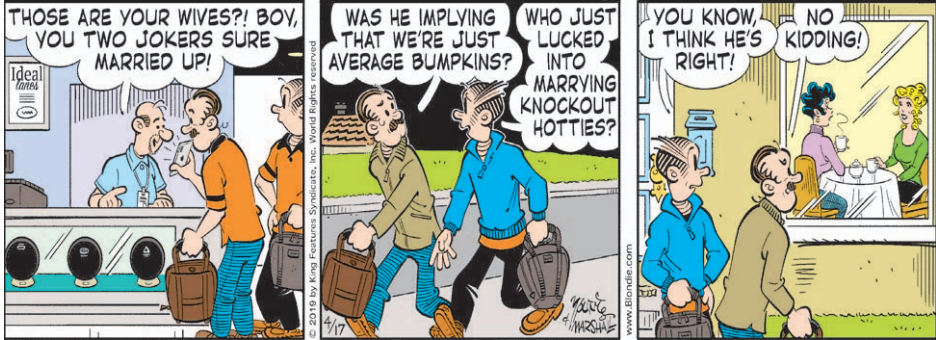
Virgo (Aug. 23-Sept. 22). One belief is that human desire is petty and something to overcome in order to do what is required of us...

Aquarius (Jan. 20-Feb. 18). Your work doesn't have to be completely finished to be worthy of sharing...

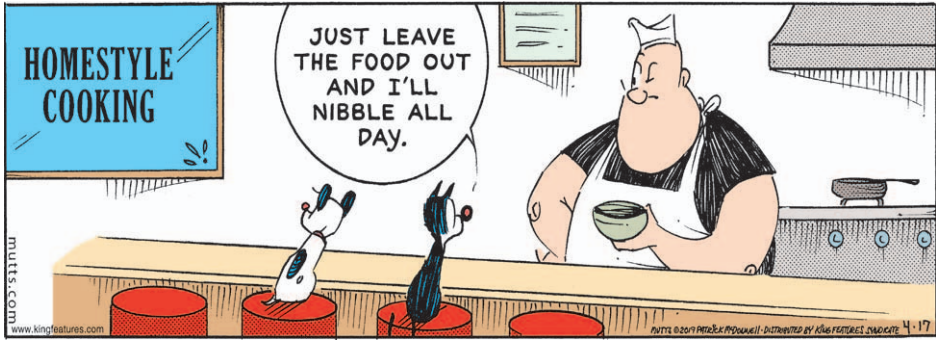
BORN LOSER By Art and Chip Sansom



BLONDIE By Dean Young and John Marshall



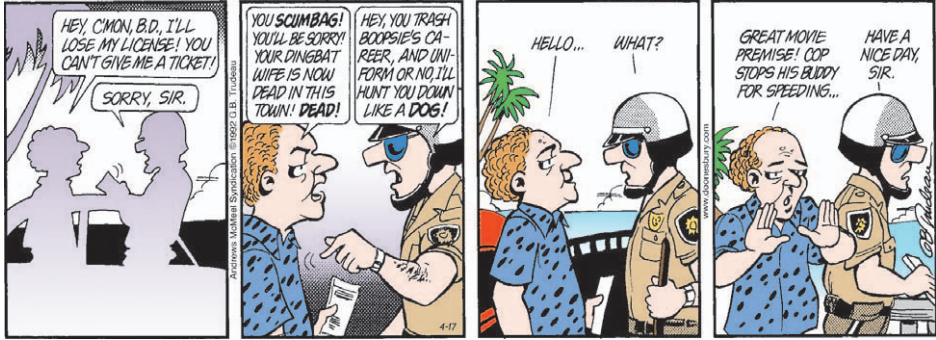
MUTTS By Patrick McDonnell



BABY BLUES By Rick Kirkman and Jerry Scott



DOONSBURY By Garry Trudeau



TODAY'S CROSSWORD PUZZLE

- ACROSS
1 Long-winded
6 Employees
10 Llover
14 Love in Venice
15 Fiendish
16 Den or burrow
17 Competitor
18 Magritte or Russo
19 Thickening agent
20 Walked
22 Set aside for
24 Response to a rodent
25 Pub sign (2 wds.)
26 More rugged
30 Thread purchases
34 Grail descriptor
35 Pen points
37 Column type
38 — out (withdraw)
39 Kindled
41 Percent ending
42 Wiped out
44 LAX guesses
45 Talkative Rivers
46 Climbed up
48 Get cozy
50 Sang to the moon
52 Catch a bug
53 December visitor

- DOWN
1 Serious conflicts
2 Pass over
3 Drift here and yon
4 Window covering
5 Barked
6 Bunch of cattle
7 First lady?
8 Nubby fabric
9 Arranges in folds
10 Do one's hair
11 Caesar's garment
12 Sharif or Bradley
13 Incidental benefit
21 Barely scraping by
23 Speedy
25 Flew the shuttle

PREVIOUS PUZZLE SOLVED
GERE GLEAN SHUT
AXIS LARVA TYRO
LIFT OBOES UPDO
ASLEEP DRAWNOUT
STEED JETLAG
MYNA RUBES
PUGS YIP ANNUAL
ELI ELECT RCA
ENLIST TAM ASHY
LADLE TASAN
LAGOON LEAFS
YODELERS NIMBLE
ALEG AGAPE ODIN
MESA RAKES NUTS
SOIL SNAGS ELSE
4-17-19 © 2019 UFS, Dist. by Andrews McMeel for UFS

Wednesday, April 17, 2019

GOREN BRIDGE

WITH BOB JONES
©2019 Tribune Content Agency, LLC

SDS

East-West vulnerable, South deals

Hand distribution table for Goren Bridge showing North, West, East, and South suits and card counts.

The bidding: SOUTH WEST NORTH EAST
1♥ Pass 2♣ Pass 3♦ Pass 3NT Pass
2♠ Pass 3♦ Pass 4NT Pass 6NT All pass

the 10 of diamonds. West won with his ace and shifted to a spade, won with dummy's king. Declarer now accurately cashed his winners in the proper order.

Hand distribution table for Goren Bridge showing North and South suits and card counts.

Opening lead: Four of ♦

Today's deal is from a recent competition in Europe. The actual auction was too complicated for a column, so we substituted the auction above.

Had either major behaved, South would already have 12 tricks. South led dummy's jack of diamonds and East had to discard a club to keep his jack of spades.

JANRIC CLASSIC SUDOKU

Fill in the blank cells using numbers 1 to 9. Each number can appear only once in each row, column and 3x3 block.

JANRIC CLASSIC SUDOKU puzzle grid and solution grid.

WORDY GURDY

BY TRICKY RICKY KANE
Every answer is a rhyming pair of words (like FAT CAT and DOUBLE TROUBLE), and they will fit in the letter squares.

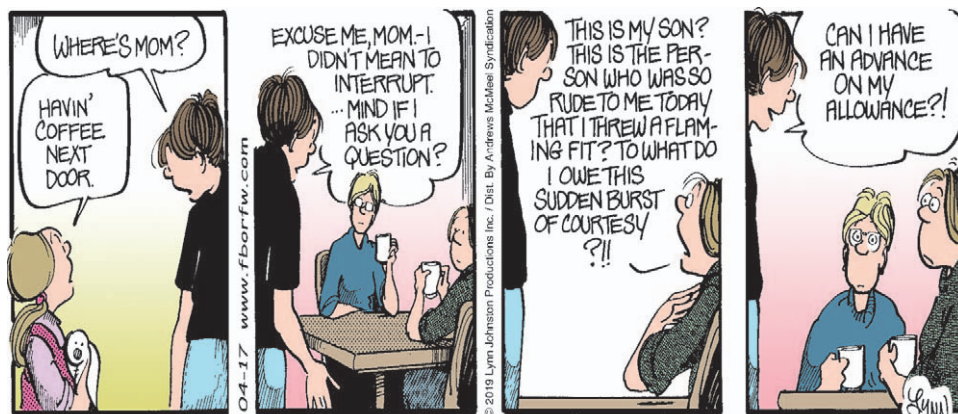
- 1. Caught the song of a nightingale (1)
2. Peloponnesian mountaintop (1)
3. Upper leg parts' dimensions (1)
4. Take a liking to pol Pelosi (2)
5. Regretting romancing (2)
6. MLB AL's or NL's movie-set lights (1)
7. The past's still unexplained events (3)

ANSWERS
1. HEARD BIRD 2. GREER PEAR 3. THIGHS SIZE 4. FANCY NANCY
5. RUING WOONG 6. LEAGUES KLEGS 7. HISTOIRS MYSTERIES
4-17-19

Crossword puzzle grid with numbered starting points for the Wordy Gurdy puzzle.

Want more puzzles? Check out the "Just Right Crossword Puzzles" books at QuillDriverBooks.com

FOR BETTER OR FOR WORSE By Lynn Johnston



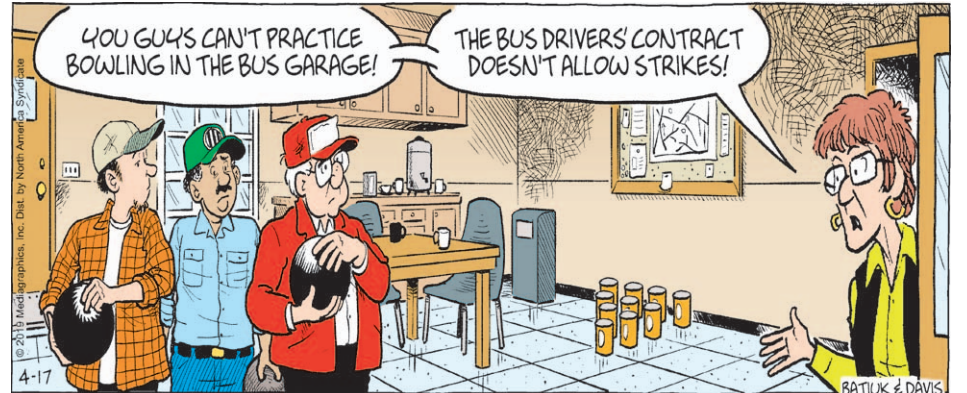
PEANUTS By Charles Schulz



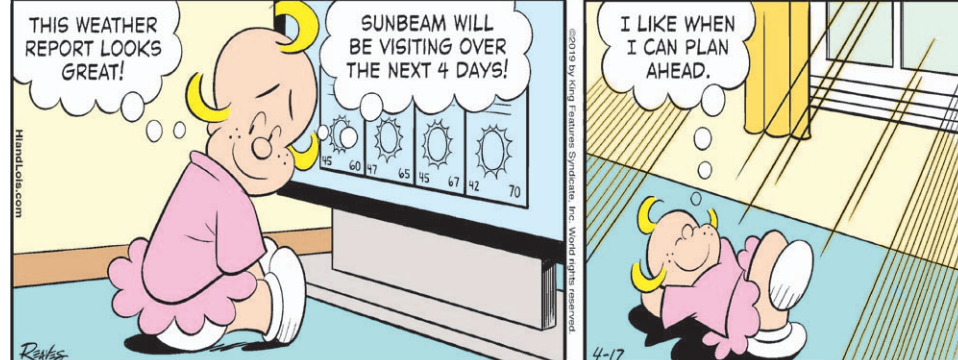
MALLARD FILLMORE By Bruce Tinsley



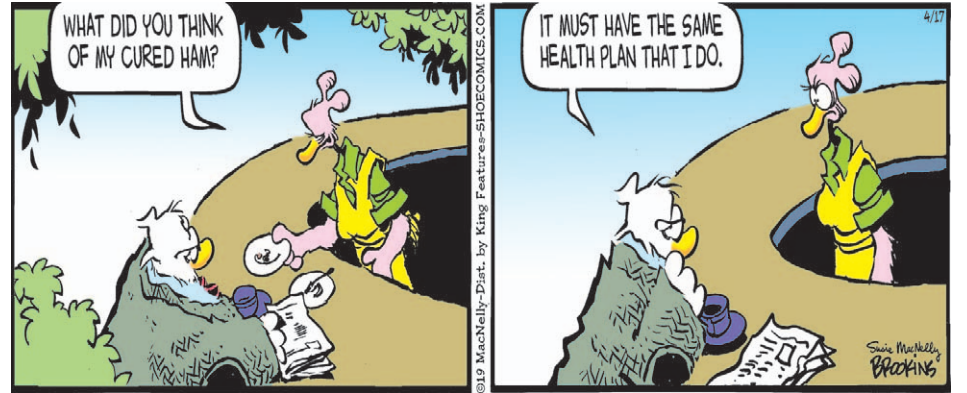
CRANKSHAFT By Tom Batiuk & Chuck Ayers



HI AND LOIS By Brian and Greg Walker



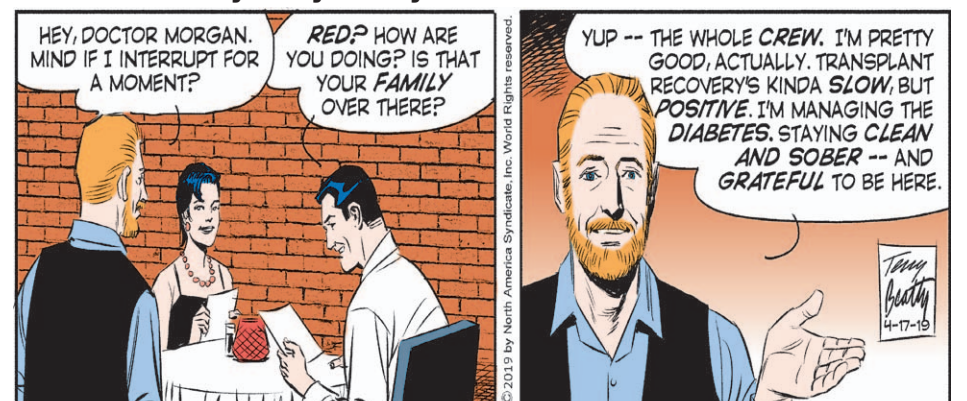
SHOE By Gary Brookins & Susie MacNelly



BEEBLE BAILEY By Mort Walker



REX MORGAN By Terry Beatty



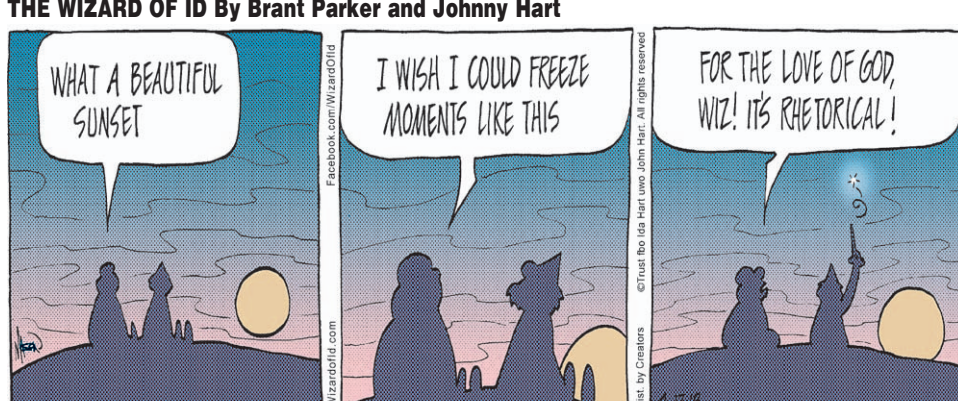
HAGAR THE HORRIBLE By Chris Browne



ZITS By Jerry Scott & Jim Borgman



THE WIZARD OF ID By Brant Parker and Johnny Hart



GARFIELD By Jim Davis



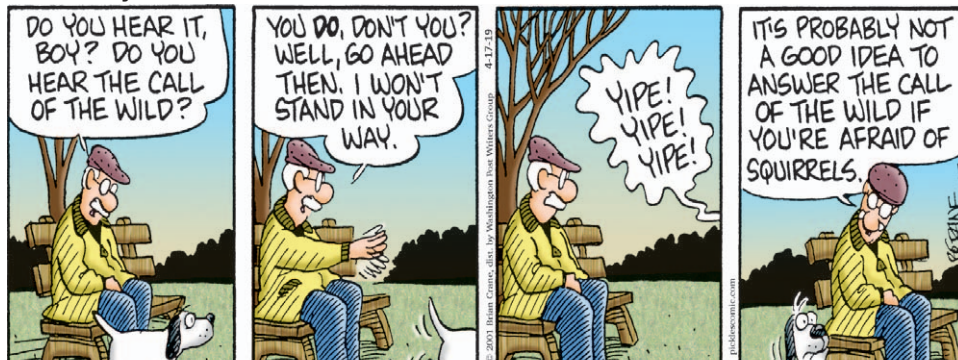
MOTHER GOOSE AND GRIMM By Mike Peters



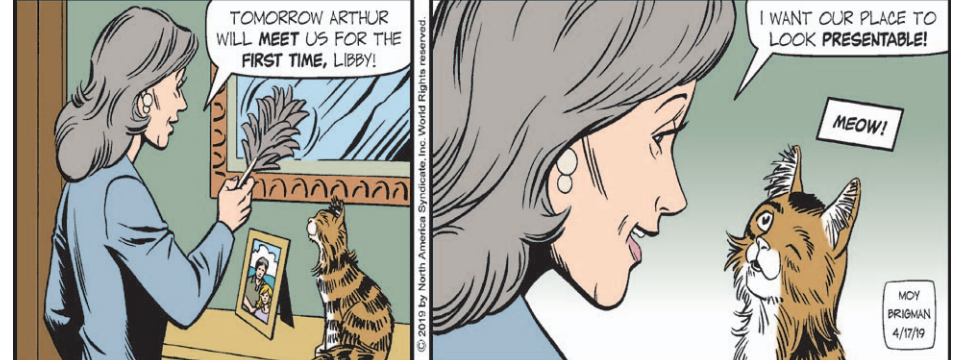
PEARLS BEFORE SWINE By Stephan Pastis



PICKLES By Brian Crane



MARY WORTH By Karen Moy and June Brigman



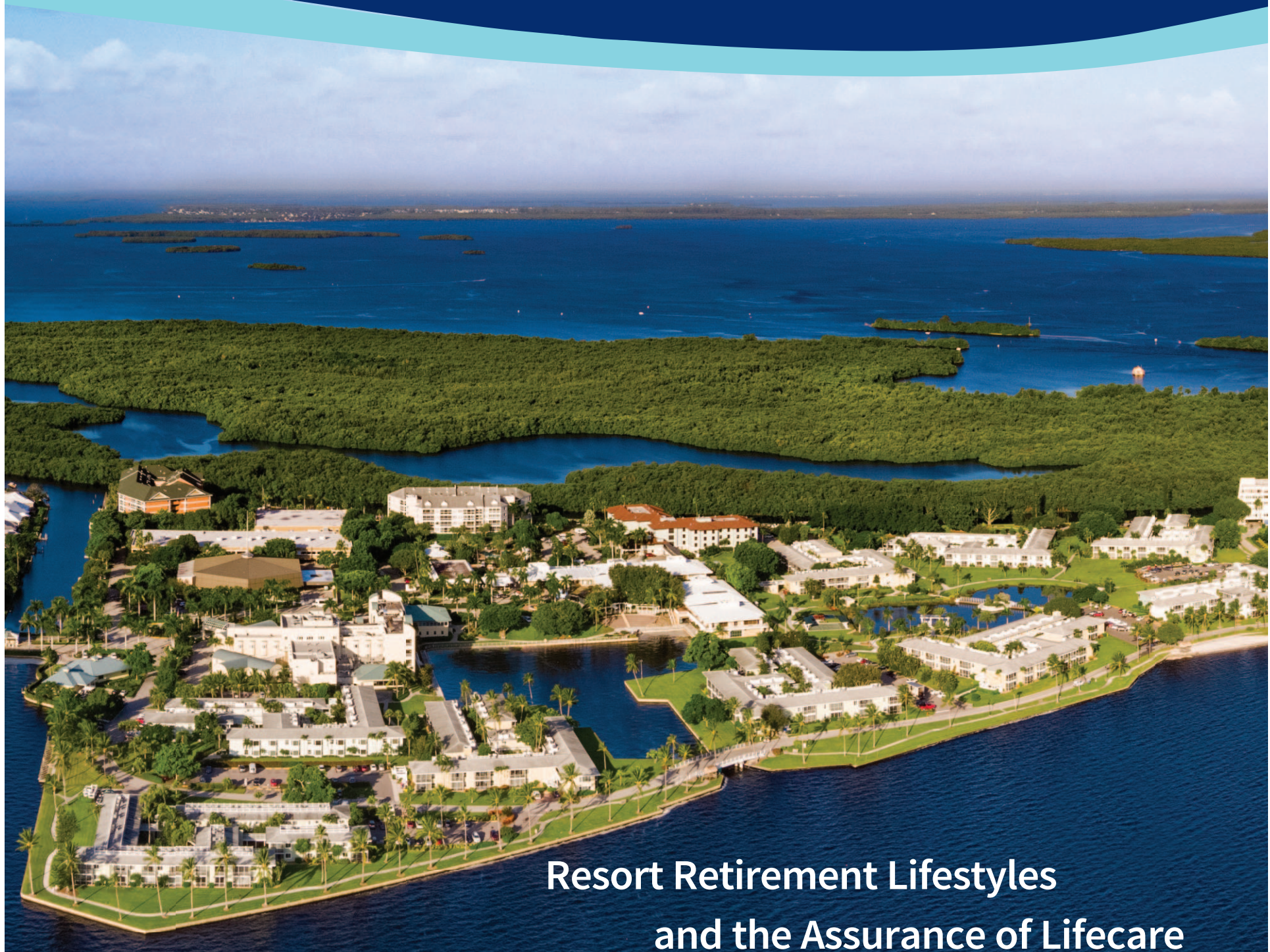
B.C. By Mastroianni & Hart



DILBERT By Scott Adams



Location. Location. Shell Point.



Resort Retirement Lifestyles
and the Assurance of Lifecare



EXPLORE SHELL POINT TODAY!

ATTEND A DISCOVERY SEMINAR | 9:30 A.M.

**Tuesday
April 23**

**Wednesday
April 24**

**Tuesday
April 30**

**Tuesday
May 7**

SHELL POINT
RETIREMENT COMMUNITY

Reserve today; call **(239) 228-4075** or **1-800-780-1131**.
Or, reserve online at shellpoint.org/seminars.

Shell Point is located on the banks of the Caloosahatchee River just 2 miles from the Islands of Sanibel and Captiva.

Shell Point is a nonprofit ministry of The Christian and Missionary Alliance Foundation, Inc. ©2019 Shell Point. All rights reserved. SLS-3919-19

Unparalleled setting. Unparalleled lifestyle.™
www.shellpoint.org

adno=3669842-1

Tax Deeds

Name in which assessed:
QUEEN M ROBERSON
All of said property being in the county of Polk, State of Florida Unless such certificate or certificates shall be redeemed according to law the property described in such certificate or certificates will be sold to the highest bidder online at www.polk.realtaxdeed.com on: **16th day of May, 2019 at 9:30 a.m.** or any subsequently scheduled sale date.

Dated this 4th day of March 2019
Stacy M. Butterfield
Clerk of Circuit Court of Polk County, Florida
(SEAL)

PUBLISH: Apr 03-2019 Apr 10-2019
Apr 17-2019 Apr 24-2019
WARNING!

THERE ARE UNPAID TAXES ON THE PROPERTY WHICH YOU OWN, IN WHICH YOU HAVE A LEGAL INTEREST, OR IS CONTIGUOUS TO YOUR PROPERTY. THE PROPERTY WILL BE SOLD AT PUBLIC AUCTION ON **May 16-2019 UNLESS BACK TAXES ARE PAID.** Make all payments to the Tax Collector of Polk County. Payment must be in the form of cashier's check or money order and made payable to: Tax Collector, Polk County. To receive further information regarding the scheduled auction, contact the Polk County Clerk of Court, Tax Deed Department, at P.O. Box 9000, Drawer CC-8, Bartow, FL 33831-9000 or by phone at (863)534-4528.

SERVE NO LATER THAN

In the event the person cannot be served at the address given for them, please post the notice in a conspicuous place at the person's last known address. F.S. 197.522(2).

Owner -
POST NO LATER THAN at
April 3, 10, 17, 27, 2019
24189 5533

NOTICE OF APPLICATION FOR TAX DEED

NOTICE IS HEREBY GIVEN, that 5T WEALTH PARTNERS LP, the holder of the following certificate, has filed said certificate for a tax deed to be issued thereon. The certificate number, the description of the property, and the names in which it was assessed are as follows:

Certificate No: 19644
Year of Issuance: June-01-2016
Tax Deed Number: 00520-2019
Description of Property:
N 100 FT OF E 125 FT OF E 1/2 OF S 1/2 OF N 1/2 OF NE 1/4 OF NE 1/4 LESS MAINT R/W
INCLUDES 2018 TAXES
07-32-28-000000-011050
Property Address:
Name in which assessed:
ESTATE OF WALLACE LOWERY JR

All of said property being in the county of Polk, State of Florida Unless such certificate or certificates shall be redeemed according to law the property described in such certificate or certificates will be sold to the highest bidder online at www.polk.realtaxdeed.com on: **16th day of May, 2019 at 9:30 a.m.** or any subsequently scheduled sale date.

Dated this 4th day of March 2019
Stacy M. Butterfield
Clerk of Circuit Court of Polk County, Florida
(SEAL)

PUBLISH: Apr 03-2019 Apr 10-2019
Apr 17-2019 Apr 24-2019
WARNING!

THERE ARE UNPAID TAXES ON THE PROPERTY WHICH YOU OWN, IN WHICH YOU HAVE A LEGAL INTEREST, OR IS CONTIGUOUS TO YOUR PROPERTY. THE PROPERTY WILL BE SOLD AT PUBLIC AUCTION ON **May 16-2019 UNLESS BACK TAXES ARE**

Tax Deeds

PAID. Make all payments to the Tax Collector of Polk County. Payment must be in the form of cashier's check or money order and made payable to: Tax Collector, Polk County. To receive further information regarding the scheduled auction, contact the Polk County Clerk of Court, Tax Deed Department, at P.O. Box 9000, Drawer CC-8, Bartow, FL 33831-9000 or by phone at (863)534-4528.

SERVE NO LATER THAN

In the event the person cannot be served at the address given for them, please post the notice in a conspicuous place at the person's last known address. F.S. 197.522(2).

Owner -
POST NO LATER THAN at
April 3, 10, 17, 27, 2019
24189 5534

NOTICE OF APPLICATION FOR TAX DEED

NOTICE IS HEREBY GIVEN, that WW WHOLESALE LLC C/O RAYMOND E BROWN MGR, the holder of the following certificate, has filed said certificate for a tax deed to be issued thereon. The certificate number, the description of the property, and the names in which it was assessed are as follows:

Certificate No: 19240
Year of Issuance: September 26-2018

Tax Deed Number: 00566-2019
Description of Property:

THULBERRYS FIRST ADD PB 7 PG 16 BLK 5 LOT 1 & 15FT STRIP ON S SIDE OF BLK 5 & THE EAST 25 FT OF CLOSED "D" ST LYING WEST OF 1

INCLUDES 2018 TAXES
02-30-27-901500-005010
Property Address:

Name in which assessed:
TRUST 0282
All of said property being in the county of Polk, State of Florida Unless such certificate or certificates shall be redeemed according to law the property described in such certificate or certificates will be sold to the highest bidder online at www.polk.realtaxdeed.com on: **16th day of May, 2019 at 9:30 a.m.** or any subsequently scheduled sale date.

Dated this 8th day of March 2019
Stacy M. Butterfield
Clerk of Circuit Court of Polk County, Florida
(SEAL)

PUBLISH: Apr 03-2019 Apr 10-2019
Apr 17-2019 Apr 24-2019
WARNING!

THERE ARE UNPAID TAXES ON THE PROPERTY WHICH YOU OWN, IN WHICH YOU HAVE A LEGAL INTEREST, OR IS CONTIGUOUS TO YOUR PROPERTY. THE PROPERTY WILL BE SOLD AT PUBLIC AUCTION ON **May 16-2019 UNLESS BACK TAXES ARE PAID.** Make all payments to the Tax Collector of Polk County. Payment must be in the form of cashier's check or money order and made payable to: Tax Collector, Polk County. To receive further information regarding the scheduled auction, contact the Polk County Clerk of Court, Tax Deed Department, at P.O. Box 9000, Drawer CC-8, Bartow, FL 33831-9000 or by phone at (863)534-4528.

SERVE NO LATER THAN

In the event the person cannot be served at the address given for them, please post the notice in a conspicuous place at the person's last known address. F.S. 197.522(2).

Owner -
POST NO LATER THAN at
April 3, 10, 17, 27, 2019
24189 5538

Tax Deeds

NOTICE OF APPLICATION FOR TAX DEED

NOTICE IS HEREBY GIVEN, that BENJAMIN FLECK, the holder of the following certificate, has filed said certificate for a tax deed to be issued thereon. The certificate number, the description of the property, and the names in which it was assessed are as follows:

Certificate No: 9012
Year of Issuance: December 13-2017

Tax Deed Number: 00568-2019
Description of Property:

KICKLIGHTER P C PB 3 PG 70 LOTS 6 & 7
2018 TAXES ARE PAID
27-31-25-465000-000061

Property Address:
Name in which assessed:
DANNY WAYNE BRACEWELL
ESTATE OF BESSIE PEACOCK
JIMMY EARL BRACEWELL
JOHNNY RAY BRACEWELL
PAT NORRIS

All of said property being in the county of Polk, State of Florida Unless such certificate or certificates shall be redeemed according to law the property described in such certificate or certificates will be sold to the highest bidder online at www.polk.realtaxdeed.com on: **16th day of May, 2019 at 9:30 a.m.** or any subsequently scheduled sale date.

Dated this 4th day of March 2019
Stacy M. Butterfield
Clerk of Circuit Court of Polk County, Florida
(SEAL)

PUBLISH: Apr 03-2019 Apr 10-2019
Apr 17-2019 Apr 24-2019
WARNING!

THERE ARE UNPAID TAXES ON THE PROPERTY WHICH YOU OWN, IN WHICH YOU HAVE A LEGAL INTEREST, OR IS CONTIGUOUS TO YOUR PROPERTY. THE PROPERTY WILL BE SOLD AT PUBLIC AUCTION ON **May 16-2019 UNLESS BACK TAXES ARE PAID.** Make all payments to the Tax Collector of Polk County. Payment must be in the form of cashier's check or money order and made payable to: Tax Collector, Polk County. To receive further information regarding the scheduled auction, contact the Polk County Clerk of Court, Tax Deed Department, at P.O. Box 9000, Drawer CC-8, Bartow, FL 33831-9000 or by phone at (863)534-4528.

SERVE NO LATER THAN

In the event the person cannot be served at the address given for them, please post the notice in a conspicuous place at the person's last known address. F.S. 197.522(2).

Owner -
POST NO LATER THAN at
April 3, 10, 17, 27, 2019
24189 5544

NOTICE OF APPLICATION FOR TAX DEED

NOTICE IS HEREBY GIVEN, that WMS NEW WORLD INVESTMENTS LLC, the holder of the following certificate, has filed said certificate for a tax deed to be issued thereon. The certificate number, the description of the property, and the names in which it was assessed are as follows:

Certificate No: 15720
Year of Issuance: July 12-2017
Tax Deed Number: 00589-2019

Description of Property:
TWIN LAKE PARK SUB PB 3 PG 8 BLK 2 LOT 2 W 50 FT OF E 105 FT OF N 142 FT LESS N 5 FT FOR RD R/W

INCLUDES 2018 TAXES
02-30-27-903500-002203
Property Address:

Name in which assessed:
ESTATE OF KATHLEEN M WADDLE RUSS
All of said property being in the county of Polk, State of Florida





TOUR

Celebrating The **50TH ANNIVERSARY**
of the **SUMMER** that changed **EVERYTHING**



Tix from \$29!

PAISLEY CRAZE

Band Performing **LIVE IN CONCERT!**

POLK THEATRE

APRIL 20, 2019

121 S. Florida Avenue • Lakeland, FL 33801
Doors open at 5:30pm • 7:00 Showtime
Dress to impress, let's see your best '60s attire!

Relive the music of: Creedence Clearwater Revival
The Grateful Dead • Jimi Hendrix Janis Joplin • Crosby, Stills and Nash • The Who and much more!

Festive Activities:
Two hours of Peace & Music • Tie-Dye Spin Art • Trivia & Games
Photo Booth • History of Woodstock • Merchandise

Order online, by phone or at the Box Office
www.polktheatre.org or call (863) 682-7553
Polk Theatre Box Office Hours: Open M-F 1:00PM - 3:00PM
All sales final, additional taxes & fees may apply.. Call for special needs seating.

Tax Deeds

Unless such certificate or certificates shall be redeemed according to law the property described in such certificate or certificates will be sold to the highest bidder online at www.polk.realtaxdeed.com on: **16th day of May, 2019 at 9:30 a.m.** or any subsequently scheduled sale date.

Dated this 5th day of March 2019
Stacy M. Butterfield
Clerk of Circuit Court of Polk County, Florida
(SEAL)

PUBLISH: Apr 03-2019 Apr 10-2019
Apr 17-2019 Apr 24-2019
WARNING!

THERE ARE UNPAID TAXES ON THE PROPERTY WHICH YOU OWN, IN WHICH YOU HAVE A LEGAL INTEREST, OR IS CONTIGUOUS TO YOUR PROPERTY. THE PROPERTY WILL BE SOLD AT PUBLIC AUCTION ON **May 16-2019 UNLESS BACK TAXES ARE PAID.** Make all payments to the Tax Collector of Polk County. Payment must be in the form of cashier's check or money order and made payable to: Tax Collector, Polk County. To receive further information regarding the scheduled auction, contact the Polk County Clerk of Court, Tax Deed Department, at P.O. Box 9000, Drawer CC-8, Bartow, FL 33831-9000 or by phone at (863)534-4528.

SERVE NO LATER THAN
In the event the person cannot be served at the address given for them, please post the notice in a conspicuous place at the person's last known address. F.S. 197.522(2).

Owner -
POST NO LATER THAN at
April 3, 10, 17, 27, 2019
24189 5550

Tax Deeds

NOTICE OF APPLICATION FOR TAX DEED

NOTICE IS HEREBY GIVEN, that LUCKY T INVESTMENTS LLC, the holder of the following certificate, has filed said certificate for a tax deed to be issued thereon. The certificate number, the description of the property, and the names in which it was assessed are as follows:

Certificate No: 19922
Year of Issuance: July 09-2014
Tax Deed Number: 00590-2019
Description of Property:
FLOOD & CARSONS ADD PB 1 PG 54 IN SEC 33 T 31 R 28 BLK C LOT 2 E 90 FT OF W 165 FT OF N 180 FT

INCLUDES 2018 TAXES 32-31-28-976200-003027
Property Address:
Name in which assessed: WILLIAM COOK
All of said property being in the county of Polk, State of Florida Unless such certificate or certificates shall be redeemed according to law the property described in such certificate or certificates will be sold to the highest bidder online at www.polk.realtaxdeed.com on: **16th day of May, 2019 at 9:30 a.m.** or any subsequently scheduled sale date.

Dated this 4th day of March 2019
Stacy M. Butterfield
Clerk of Circuit Court of Polk County, Florida
(SEAL)

PUBLISH: Apr 03-2019 Apr 10-2019
Apr 17-2019 Apr 24-2019
WARNING!

THERE ARE UNPAID TAXES ON THE PROPERTY WHICH YOU OWN, IN WHICH YOU HAVE A LEGAL INTEREST, OR IS CONTIGUOUS TO YOUR PROPERTY. THE PROPERTY WILL BE SOLD AT PUBLIC AUCTION ON **May 16-2019 UNLESS BACK TAXES ARE PAID.** Make all payments to the Tax Collector of Polk County. Payment must be in the form of cashier's check or money order and made payable to: Tax Collector, Polk County. To receive further information regarding the scheduled auction, contact the Polk County Clerk of Court, Tax Deed Department, at P.O. Box 9000, Drawer CC-8, Bartow, FL 33831-9000 or by phone at (863)534-4528.

SERVE NO LATER THAN
In the event the person cannot be served at the address given for them, please post the notice in a conspicuous place at the person's last known address. F.S. 197.522(2).

Owner -
POST NO LATER THAN at
April 3, 10, 17, 27, 2019
24189 5554

Tax Deeds

NOTICE OF APPLICATION FOR TAX DEED

NOTICE IS HEREBY GIVEN, that BOSCH DEVELOPMENTS LLC, the holder of the following certificate, has filed said certificate for a tax deed to be issued thereon. The certificate number, the description of the property, and the names in which it was assessed are as follows:

Certificate No: 8961
Year of Issuance: July 07-2014
Tax Deed Number: 00594-2019
Description of Property:
SOUTH FLORIDA RR ADD PB 1 PG 27 TIER 2 BLK 2 LOT 4 THAT PT DESC AS BEG SW COR RUN N 60.09 FT E ALONG A LINE 7.53 FT S OF AND PARALLEL WITH N BNDRY OF LOT 4 127.08 FT TO PT ON E BNDRY OF LOT 4 S 60.09 FT TO SE COR OF LOT 4 RUN W 127.08 FT TO POB & E 1/2 OF CLOSED ALLEY LYING W OF SAME

2018 TAXES ARE PAID 08-30-25-414500-022041
Property Address:
Name in which assessed: PAULA W MACON
All of said property being in the county of Polk, State of Florida Unless such certificate or certificates shall be redeemed according to law the property described in such certificate or certificates will be sold to the highest bidder online at www.polk.realtaxdeed.com on: **16th day of May, 2019 at 9:30 a.m.** or any subsequently scheduled sale date.

Dated this 4th day of March 2019
Stacy M. Butterfield
Clerk of Circuit Court of Polk County, Florida
(SEAL)

PUBLISH: Apr 03-2019 Apr 10-2019
Apr 17-2019 Apr 24-2019
WARNING!

THERE ARE UNPAID TAXES ON THE PROPERTY WHICH YOU OWN, IN WHICH YOU HAVE A LEGAL INTEREST, OR IS CONTIGUOUS TO YOUR PROPERTY. THE PROPERTY WILL BE SOLD AT PUBLIC AUCTION ON **May 16-2019 UNLESS BACK TAXES ARE PAID.** Make all payments to the Tax Collector of Polk County. Payment must be in the form of cashier's check or money order and made payable to: Tax Collector, Polk County. To receive further information regarding the scheduled auction, contact the Polk County Clerk of Court, Tax Deed Department, at P.O. Box 9000, Drawer CC-8, Bartow, FL 33831-9000 or by phone at (863)534-4528.

SERVE NO LATER THAN
In the event the person cannot be served at the address given for them, please post the notice in a conspicuous place at the person's last known address. F.S. 197.522(2).

Owner -
POST NO LATER THAN at
April 3, 10, 17, 27, 2019
24189 5556

Other Notices

Webb's Towing & Recovery Services, LLC.
3025 East Main Street
Lakeland, FL 33801
863-687-0304

PUBLIC AUCTION NOTICE

May 15, 2019, 9:00 am
2003 Mercedes-Benz S430
VIN=WDBNG70J33A329775
2005 Toyota Camry
VIN=4T1BE32KX5U07973
2008 Nissan Altima
VIN=1N4AL21E08N523931
2000 Toyota Corolla
VIN=1NXBR12E2YZ365633
2005 Chevrolet Impala
VIN=2G1WF52E359269307
2003 Nissan Altima
VIN=1N4BL11DX3C213795
2017 Hyundai 53' reefer trailer
VIN=3H3V532C0HT335079
2004 Nissan 350Z
VIN=JN1AZ34E34T062680
2000 GMC 1500
VIN=1GTEK19T3YE367878
2002 Ford Explorer
VIN=1FMZU62E72UA86955
2004 Dodge Durango
VIN=1D4HB48NX4F209983
1998 Honda Accord
VIN=1HGCG5649WA060833
1998 Ford Expedition
VIN=1FMRU18W5WLB02410
2003 Mitsubishi Outlander
VIN=JA4LX31G53U107378
April 17, 2019
23840 6566

Other Notices

PUBLIC NOTICE

LAST KNOWN ADDRESS:
Dannecker IV, Nelson J
2121 New Tampa HWY LOT 46
Lakeland, 33815

You are hereby notified that your eligibility to vote is in question. You are required to contact the Supervisor of Elections, in Bartow, Florida, 863-534-5888, no later than thirty (30) days after the date of this publishing. Failure to respond will result in a determination of ineligibility by the Supervisor and your name will be removed from the statewide voter registration system.

Por este medio, se le notifica que su elegibilidad para votar está en duda. Se requiere que usted contacte la Supervisora de Elecciones en Bartow, Florida, (863) 534-5888, a más tardar treinta (30) días después de la fecha de esta publicación. Fracaso en responder resultará en una determinación de inelegibilidad por la Supervisora y su nombre será removido del sistema de registro de votantes estatal.

Lori Edwards
Polk County Supervisor of Elections
April 17, 2019
23695 6544



NEW LEGAL AD DEADLINE: NOON MONDAY TO PUBLISH IN THE FOLLOWING WEDNESDAYS EDITION OF THE RECORD

GET YOUR SUBSCRIPTION TODAY

52 Weeks for \$47.99!
or
26 Weeks for \$28.82

863.533.4183

Affordable
Legal Advertising

863.533.4183
FOR INFORMATION ABOUT PLACING A LEGAL AD IN THE RECORD

Local News
In Print & Online

www.polknewssun.com
www.winterhavensun.com

Send Legal Ads to
legals@scmginc.com
863.533.4183



Catch up on sports,
shopping deals,
restaurant reviews,
events, new businesses,
politics, job openings,
homes for sale, cars for
sale and more
with your
local newspaper!

Local Coverage

Where You Work, Play & Live

Get your subscription today!

52 Weeks for \$47.99
26 Weeks for \$28.82

POLK NEWS-SUN 

863.533.4183

Continued from previous page

NYSE

Main table containing NYSE stock listings with columns for Name, Ticker, Div, Yield, PE, 52-week High/Low, Vol, Last, and YTD %Chg. Includes sub-sections for NYSE and DOW.

- D -

Continued on next page

Continued from previous page

NYSE

Table with columns: Name, Ticker, Div, Yield, PE, 52-week High/Low, Vol 1000s, YTD %Chg. Lists various stocks including DHI Grp, DHT Hldgs, DNP Select, etc.

Table with columns: Name, Ticker, Div, Yield, PE, 52-week High/Low, Vol 1000s, YTD %Chg. Lists various stocks including Disney, Div&Inco, DivReddy, etc.

Table with columns: Name, Ticker, Div, Yield, PE, 52-week High/Low, Vol 1000s, YTD %Chg. Lists various stocks including ELLiilly, ELK HIOPfd, ELKH LOvI, etc.

Continued on next page

Continued from previous page

NYSE

Table listing NYSE stocks with columns: Name, Ticker Symbol, Div, Yield PE, 52-week High Low, Vol 1000s Last, YTD %Chg. Includes various stock entries such as Fidelity, FMC, and various tech companies.

Table listing NYSE stocks (continued) with columns: Name, Ticker Symbol, Div, Yield PE, 52-week High Low, Vol 1000s Last, YTD %Chg. Includes various stock entries such as IBM, Apple, and various financial institutions.

Table listing NYSE stocks (continued) with columns: Name, Ticker Symbol, Div, Yield PE, 52-week High Low, Vol 1000s Last, YTD %Chg. Includes various stock entries such as Amazon, Microsoft, and various pharmaceuticals.

-G-

-H-

-I-

Continued on next page

Continued from previous page

NYSE

Table with columns: Name, Ticker, Symbol, Div, Yield, PE, High, Low, 52-week, Vol, YTD, %Chg. Includes tickers like iShBelg, iShBrazil, iShCanada, etc.

Table with columns: Name, Ticker, Symbol, Div, Yield, PE, High, Low, 52-week, Vol, YTD, %Chg. Includes tickers like InnvBuf n, InnvPwB n, InnvUtlB n, etc.

Table with columns: Name, Ticker, Symbol, Div, Yield, PE, High, Low, 52-week, Vol, YTD, %Chg. Includes tickers like iSiBid12-18 s, iSiBid12-16 s, iSiBid12-20 s, etc.

- J -

- K -

- L -

Continued on next page

Continued from previous page

NYSE

Table with columns: Name, Ticker, Div, Yield, PE, 52-week High, Low, 1000s, Last, YTD %Chg. Includes stocks like LegMas56 n, LegM 5,4, 56, LMGBlnco, etc.

Table with columns: Name, Ticker, Div, Yield, PE, 52-week High, Low, 1000s, Last, YTD %Chg. Includes stocks like MorgSt pF, MorgSt pF, MorgSt pF, etc.

Table with columns: Name, Ticker, Div, Yield, PE, 52-week High, Low, 1000s, Last, YTD %Chg. Includes stocks like NMIOI, NuvMNuM, NuvMtgOp, etc.

- N -

Table with columns: Name, Ticker, Div, Yield, PE, 52-week High, Low, 1000s, Last, YTD %Chg. Includes stocks like NNCI BidSp, NCR Corp, NGL EnPnt, etc.

Table with columns: Name, Ticker, Div, Yield, PE, 52-week High, Low, 1000s, Last, YTD %Chg. Includes stocks like NNCI BidSp, NCR Corp, NGL EnPnt, etc.

Table with columns: Name, Ticker, Div, Yield, PE, 52-week High, Low, 1000s, Last, YTD %Chg. Includes stocks like OCPI Ptrs, OFG Bncp, OFG pA, etc.

- O -

Table with columns: Name, Ticker, Div, Yield, PE, 52-week High, Low, 1000s, Last, YTD %Chg. Includes stocks like M&T Bk, M&T Bk, M&T Bk, etc.

Table with columns: Name, Ticker, Div, Yield, PE, 52-week High, Low, 1000s, Last, YTD %Chg. Includes stocks like M&T Bk, M&T Bk, M&T Bk, etc.

Table with columns: Name, Ticker, Div, Yield, PE, 52-week High, Low, 1000s, Last, YTD %Chg. Includes stocks like PBF Engr, PBF Logist, PBF Fund, etc.

P-Q

Table with columns: Name, Ticker, Div, Yield, PE, 52-week High, Low, 1000s, Last, YTD %Chg. Includes stocks like PBF Engr, PBF Logist, PBF Fund, etc.

Table with columns: Name, Ticker, Div, Yield, PE, 52-week High, Low, 1000s, Last, YTD %Chg. Includes stocks like PBF Engr, PBF Logist, PBF Fund, etc.

Table with columns: Name, Ticker, Div, Yield, PE, 52-week High, Low, 1000s, Last, YTD %Chg. Includes stocks like PBF Engr, PBF Logist, PBF Fund, etc.

Continued from previous page

NYSE

Table with columns: Name, Ticker, Div, Yield, PE, 52-week High/Low, Vol 1000s, Last, YTD %Chg. Includes entries like Pentair, Penumbra, PerfFood, etc.

Table with columns: Name, Ticker, Div, Yield, PE, 52-week High/Low, Vol 1000s, Last, YTD %Chg. Includes entries like ProShSP, PrUSHSP, PrUSHDow, etc.

Table with columns: Name, Ticker, Div, Yield, PE, 52-week High/Low, Vol 1000s, Last, YTD %Chg. Includes entries like RenRe prC, ReneSola rs, RenFund, etc.

Continued on next page

Continued from previous page

NYSE

Table with columns: Name, Ticker, Symbol, Div, Yield, PE, 52-week High/Low, Vol 1000s, Last, YTD %Chg. Includes entries like SptR2KLV, SPCX, SPX FLOW, etc.

Table with columns: Name, Ticker, Symbol, Div, Yield, PE, 52-week High/Low, Vol 1000s, Last, YTD %Chg. Includes entries like StateStr, StateSt pFC, StateSt pFD, etc.

Table with columns: Name, Ticker, Symbol, Div, Yield, PE, 52-week High/Low, Vol 1000s, Last, YTD %Chg. Includes entries like TransEntx, TransUn n, Trnsaltg TAC, etc.

- U -

- T -

- V -

Continued from previous page

NYSE

Table of NYSE stock market data including columns for Name, Ticker, Symbol, Div, Yield, PE, 52-week High/Low, Vol, and YTD %Chg. Includes a large 'X-Y-Z' section in the middle.

- W -

Table of NYSE stock market data for the 'W' section, including columns for Name, Ticker, Symbol, Div, Yield, PE, 52-week High/Low, Vol, and YTD %Chg.

Nasdaq

Table of Nasdaq stock market data including columns for Name, Ticker, Symbol, Div, Yield, PE, 52-week High/Low, Vol, and YTD %Chg.

Continued from previous page

Nasdaq

Main table containing Nasdaq stock listings with columns for Name, Ticker, Div, Yield, PE, High, Low, 52-week, Vol, YTD, and %Chg. Includes sub-sections for 'A', 'B', and 'D'.

Continued on next page

Continued from previous page

Nasdaq

Table with columns: Ticker, Symbol, Div, Yield, PE, High, Low, 1000s, Last, %Chg. Includes rows for DOVA, LYL, DCAR, DBX, DRYS, etc.

- E -

Table with columns: Ticker, Symbol, Div, Yield, PE, High, Low, 1000s, Last, %Chg. Includes rows for ETFC, EBAY, EBAY56, EDAP, etc.

- F -

Table with columns: Ticker, Symbol, Div, Yield, PE, High, Low, 1000s, Last, %Chg. Includes rows for FFIV, FAT BR, FFBW, FLIR, etc.

Table with columns: Ticker, Symbol, Div, Yield, PE, High, Low, 1000s, Last, %Chg. Includes rows for FTMDMSC, FETM, FT EurZ, etc.

- G -

Table with columns: Ticker, Symbol, Div, Yield, PE, High, Low, 1000s, Last, %Chg. Includes rows for G:Willi, G1Thera, GCI, etc.

Table with columns: Ticker, Symbol, Div, Yield, PE, High, Low, 1000s, Last, %Chg. Includes rows for GOVPrT46, GOVNI, LOPE, etc.

- H -

Table with columns: Ticker, Symbol, Div, Yield, PE, High, Low, 1000s, Last, %Chg. Includes rows for H&E Eqp, HDS, HEE, etc.

- I -

Table with columns: Ticker, Symbol, Div, Yield, PE, High, Low, 1000s, Last, %Chg. Includes rows for i3Vert, IIV, IAC, etc.

Continued on next page

Continued from previous page

Nasdaq

Table with columns: Name, Ticker, Div, Yield, PE, 52-week High, Low, Vol, Last, YTD %Chg. Includes stocks like IndBkMA, IndBkMf, IndBkTf, etc.

Table with columns: Name, Ticker, Div, Yield, PE, 52-week High, Low, Vol, Last, YTD %Chg. Includes stocks like LHC Grp, LKO Corp, LM Fdga, etc.

Table with columns: Name, Ticker, Div, Yield, PE, 52-week High, Low, Vol, Last, YTD %Chg. Includes stocks like Misonix, Micham, Mitchm pfA, etc.

Table with columns: Name, Ticker, Div, Yield, PE, 52-week High, Low, Vol, Last, YTD %Chg. Includes stocks like J&J Snack, JGlobal, J2Global, etc.

Table with columns: Name, Ticker, Div, Yield, PE, 52-week High, Low, Vol, Last, YTD %Chg. Includes stocks like MACOM, MAM Soft, MAMM, etc.

Table with columns: Name, Ticker, Div, Yield, PE, 52-week High, Low, Vol, Last, YTD %Chg. Includes stocks like OZMico, OFS Cap, OFS OFS, etc.

Continued from previous page

Nasdaq

Table with columns: Name, Ticker, Div, Yield, PE, 52-week High/Low, Vol 1000s, YTD %Chg. Includes stocks like OneSpan, OpenText, OperaLtd, etc.

Table with columns: Name, Ticker, Div, Yield, PE, 52-week High/Low, Vol 1000s, YTD %Chg. Includes stocks like Qorvo, Qualcomm, Qualstar, etc.

Table with columns: Name, Ticker, Div, Yield, PE, 52-week High/Low, Vol 1000s, YTD %Chg. Includes stocks like SilganHld, SilcLtd, SiliconLab, etc.

- R -

Table with columns: Name, Ticker, Div, Yield, PE, 52-week High/Low, Vol 1000s, YTD %Chg. Includes stocks like P&F Inds, PBI, PB Bncp, etc.

Table with columns: Name, Ticker, Div, Yield, PE, 52-week High/Low, Vol 1000s, YTD %Chg. Includes stocks like R1 RCM, RBB Bcp, RBC Bear, etc.

Table with columns: Name, Ticker, Div, Yield, PE, 52-week High/Low, Vol 1000s, YTD %Chg. Includes stocks like SkySol, SkyWest, SkywSol, etc.

P-Q

Table with columns: Name, Ticker, Div, Yield, PE, 52-week High/Low, Vol 1000s, YTD %Chg. Includes stocks like P&F Inds, PBI, PB Bncp, etc.

Table with columns: Name, Ticker, Div, Yield, PE, 52-week High/Low, Vol 1000s, YTD %Chg. Includes stocks like Resonant, ResCom, ResCor, etc.

Table with columns: Name, Ticker, Div, Yield, PE, 52-week High/Low, Vol 1000s, YTD %Chg. Includes stocks like Revlon, Revlon, Revlon, etc.

- S -

Table with columns: Name, Ticker, Div, Yield, PE, 52-week High/Low, Vol 1000s, YTD %Chg. Includes stocks like S&T Bcp, S&WSeed, SB Fin, etc.

Table with columns: Name, Ticker, Div, Yield, PE, 52-week High/Low, Vol 1000s, YTD %Chg. Includes stocks like SabraHltc, SabreCorp, Saba, etc.

Table with columns: Name, Ticker, Div, Yield, PE, 52-week High/Low, Vol 1000s, YTD %Chg. Includes stocks like S&T Bcp, S&WSeed, SB Fin, etc.

- T -

Table with columns: Name, Ticker, Div, Yield, PE, 52-week High/Low, Vol 1000s, YTD %Chg. Includes stocks like T&T Tch, TAG BDC, TORZ Th, etc.

Table with columns: Name, Ticker, Div, Yield, PE, 52-week High/Low, Vol 1000s, YTD %Chg. Includes stocks like T&T Tch, TAG BDC, TORZ Th, etc.

Table with columns: Name, Ticker, Div, Yield, PE, 52-week High/Low, Vol 1000s, YTD %Chg. Includes stocks like T&T Tch, TAG BDC, TORZ Th, etc.

Continued on next page

Continued from previous page

Nasdaq

Table of Nasdaq stock market data including columns for Name, Ticker, Div, Yield, PE, High, Low, 1000s, Last, %Chg, and YTD. Lists various stocks such as TractSupp, TSCO, and others.

- U -

Table of stock market data for the 'U' section, including companies like US AutoPrt, US Concrte, and others.

- W -

Table of stock market data for the 'W' section, including companies like WCF Bop n, WCFB, and others.

- V -

Table of stock market data for the 'V' section, including companies like VBI Vac n, VBIV, and others.

X-Y-Z

Table of stock market data for the 'X-Y-Z' section, including companies like X4 Phr rs, XFOR, and others.

Money Market Funds

Table of Money Market Funds data with columns for Fund, Avg Maturity, Avg Yield, and Fund, Avg Maturity, Avg Yield. Lists various funds like Cash Account Tr, Gov, and others.

Continued on next page

Continued from previous page

Money Market Funds

Table of Money Market Funds with columns: Fund, Avg Maturity, Avg Yield, Fund, Avg Maturity, Avg Yield, Fund, Avg Maturity, Avg Yield, Fund, Avg Maturity, Avg Yield, Fund, Avg Maturity, Avg Yield. Includes funds like New York Tax-Free Mo, NorthInstGovSel, Putnam Money Market, etc.

Tax Exempt

Table of Tax Exempt Funds with columns: Fund, Avg Maturity, Avg Yield, Fund, Avg Maturity, Avg Yield, Fund, Avg Maturity, Avg Yield, Fund, Avg Maturity, Avg Yield, Fund, Avg Maturity, Avg Yield. Includes funds like AAIMT, AmC CATH, AmC TF, etc.

Toronto stocks

Table of Toronto Stocks with columns: Name, Vol, High, Low, Last, Chg, Name, Vol, High, Low, Last, Chg, Name, Vol, High, Low, Last, Chg, Name, Vol, High, Low, Last, Chg. Includes stocks like AHCResources, AdvOil Gas, AgnicoEagle, etc.

Treasury bonds

Table of Treasury Bonds with columns: Rate, Date, Bid, Ask, Chg, Yld, Rate, Date, Bid, Ask, Chg, Yld, Rate, Date, Bid, Ask, Chg, Yld, Rate, Date, Bid, Ask, Chg, Yld. Lists various Treasury bond maturities and yields.

FOOTNOTE: Rate-The annual interest rate the Treasury bond provides to investors. Date-The month and year the bond will expire. Bid-The price investors will pay for the bond. Ask-The price at which investors will sell. A bond price is expressed as a percentage of its original purchase cost of \$1,000. The whole numbers and the decimals which represent 32nds of a point must be converted to dollars and cents; for example, 103.18 equals \$1,035.63. Chg-The change between the preceding day's final bid price and the final bid price from the day before. Yld-The annual percentage return to the investor, based on the bond's current price, if the bond is held until it matures. K-Taxes on interest will not be withheld from non-U.S. citizens. n-Treasury note. p-Treasury note; taxes on interest will not be withheld from non-U.S. citizens.

Mutual Funds

Table of Mutual Funds with columns: Name, Obj, NAV, 4-wk Rtn, YTD Rtn, 3-yr Rtn/Rk, Name, Obj, NAV, 4-wk Rtn, YTD Rtn, 3-yr Rtn/Rk, Name, Obj, NAV, 4-wk Rtn, YTD Rtn, 3-yr Rtn/Rk. Includes funds like AAM, InsgtSelcncl d, AB, AAIMkTRIRet1 b, etc.

How to Read the Mutual Fund Tables

Here are the 4,300 biggest mutual funds listed on Nasdaq. Tables show the fund name, sell price or net asset value (NAV), daily net change and weekly net change. Underlining highlights the funds ranked in the top 20% in each of the last 5 years:

Name: Name of mutual fund and family. Obj: The fund's objective group. Abbreviations listed below. NAV: Net asset value. Chg: Net change in price of NAV from previous day. Rtn: The fund's total return, or percent change in NAV for the time period shown, with Footnotes: e - Ex capital gains distribution. f - Previous day's quotation. n - No front end load or contingent deferred sales load may apply. p - Fund assets are used to pay for r distribution costs; -12(b)(1) plan. r - Redemption fee or contingent deferred sales load may apply. s - Stock dividend or split. t - Both p and r. x - Ex cash dividend d. NA - not available. Fund Objectives: AL: Allocation - 70-85% Equity, AM: Multialternative, BL: Bank Loan, BM: Bear Market, CA: Allocation - 30-50% Equity, CC: Consumer Defense, CD: Consumer Cyclical, CH: China Region, CI: Intermediate-Term Bond, CL: Long-Term Bond, CR: Mutual Investment, CS: Short-Term Bond, CV: Convertibles, DP: Diversified Pacific/Asia, EB: Emerging-Markets Bond, EE: Equity Energy, EI: India Equity, EM: Diversified Emerging Markets, ES: Europe Stock, FA: Foreign Small/Mid-Value, FB: Foreign Large-Blend, FF: Foreign Futures, FG: Foreign Large-Growth, FO: Foreign Small/Mid-Blend, FR: Foreign Small/Mid-Growth, FV: Foreign Large-Value, FX: Foreign Currency, GI: Intermediate Government, GL: Long Government, GR: Global Real Estate, GS: Short Government, HM: High-Yield Muni, HY: High-Yield Bond, IB: World Bond, IC: Trading-Inverse Commodities, ID: Industrials, IE: Trading-Inverse Equity, IH: World Allocation, IP: Inflation-Protected Bond, IS: Trading-Miscellaneous, JS: Japan Stock, LB: Large Blend, LC: Trading-Leveraged Commodities, LE: Trading-Inverse Equity, LG: Large Growth, LO: Long-Short Equity, LP: Energy Limited Partnership, LS: Latin America Stock, LV: Large Value, MA: Allocation - 50-70% Equity, MB: Mid-Cap Blend, MG: Mid-Cap Growth, MI: Muni National Intermediate, ML: Muni National Long, MQ: Miscellaneous Region, MR: Miscellaneous Sector, MS: Muni National Short, MU: Multisector Bond, MV: Mid-Cap Value, MY: Multi New York Long, ND: Trading-Inverse Debt, NE: Market Neutral, NT: Nontraditional Bond, PJ: Pacific/Asia, PX: ex-Japan Stock, RI: Target-Date Retirement, RR: Preferred Stock, SB: Small Blend, SC: Communications, SF: Financial, SG: Small Growth, SH: Health, SI: Muni Single State Intermediate, SL: Muni Single State Long, SN: Natural Resources, SP: Equity Precious Metals, SR: Real Estate, SS: Muni Single State Short, ST: Technology, SU: Utilities, SV: Small Value, TA: Target-Date 2000-2010, TD: Target-Date 2010, TE: Target-Date 2020, TG: Target-Date 2025, TH: Target-Date 2030, TI: Target-Date 2040, TJ: Target-Date 2045, TK: Target-Date 2050, TL: Target-Date 2055, TN: Target-Date 2050, TW: Corporate Bond, TV: Tactical Allocation, UB: Ultrashort Bond, VD: Trading-Leveraged Debt, VL: Stable Value, VO: Volatility, WS: World Stock, XM: Allocation - 85% Equity, XO: Infrastructure, XQ: Target-Date 2060+, XR: Option Writing, XS: Long-Short Credit, XP: Emerging-Markets Local-Currency Bond, XY: Allocation - 15-30% Equity. Data based on NAVs reported to Morningstar by 6 p.m. Eastern.

Top 20 Mutual Funds

By Year-to-Date Percent Return

Table listing top 20 mutual funds by year-to-date percent return, including fund name, objective, NAV, and YTD return.

By Total Net Assets

Table listing top 20 mutual funds by total net assets, including fund name, objective, assets, and percent return.

By 4-Week Percent Return

Table listing top 20 mutual funds by 4-week percent return, including fund name, objective, NAV, and 4-week return.

Continued from previous page

Mutual Funds

Large table listing various mutual funds with columns for Name, Obj, NAV, 4-wk Rtn, YTD Rtn, and 3-yr Rtn/Rk.

Continued on next page

Continued from previous page

Mutual Funds

Table with 15 columns: Name, Obj, NAV, 4-wk Rtn, YTD Rtn, 3-yr Rtn/Rk, Name, Obj, NAV, 4-wk Rtn, YTD Rtn, 3-yr Rtn/Rk, Name, Obj, NAV, 4-wk Rtn, YTD Rtn, 3-yr Rtn/Rk. Contains multiple fund entries with their respective performance metrics.

Continued on next page

Continued from previous page

Mutual Funds

Table with 16 columns: Name, Obj, NAV, 4-wk Rtn, YTD Rtn, 3-yr Rtn/Rk, Name, Obj, NAV, 4-wk Rtn, YTD Rtn, 3-yr Rtn/Rk, Name, Obj, NAV, 4-wk Rtn, YTD Rtn, 3-yr Rtn/Rk, Name, Obj, NAV, 4-wk Rtn, YTD Rtn, 3-yr Rtn/Rk. Contains various mutual fund entries such as DiscpEqHLSIA, FlingRtA m, and others.

Continued on next page

Continued from previous page

Table of Mutual Funds with columns for Name, Obj, NAV, 4-wk Rtn, YTD Rtn, 3-yr Rtn/Rk, and a detailed list of fund names and their performance metrics.

Continued from previous page

Mutual Funds

Table with columns: Name, Obj, NAV, 4-wk Rtn, YTD Rtn, 3-yr Rtn/Rrk, Name, Obj, NAV, 4-wk Rtn, YTD Rtn, 3-yr Rtn/Rrk, Name, Obj, NAV, 4-wk Rtn, YTD Rtn, 3-yr Rtn/Rrk, Name, Obj, NAV, 4-wk Rtn, YTD Rtn, 3-yr Rtn/Rrk. Contains multiple columns of mutual fund data.

