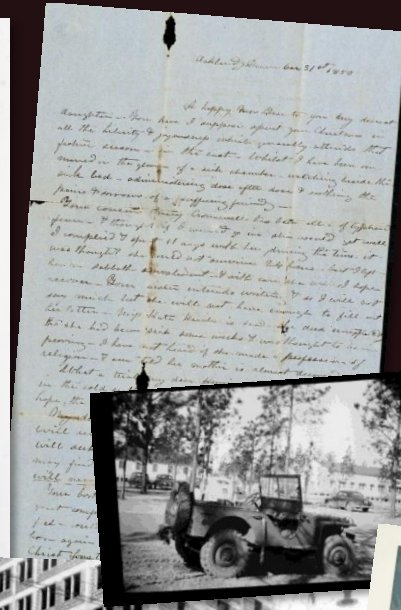
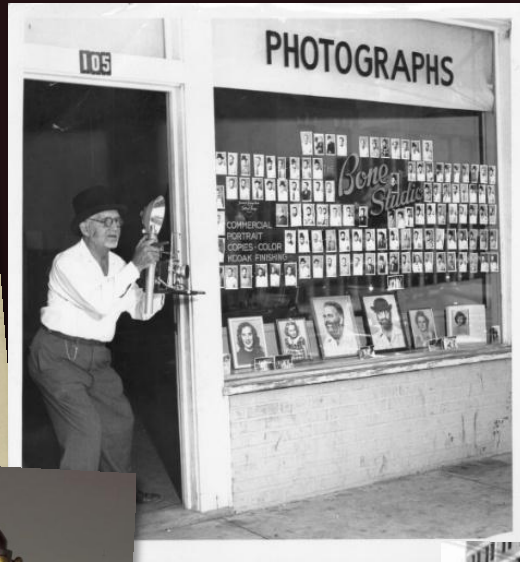
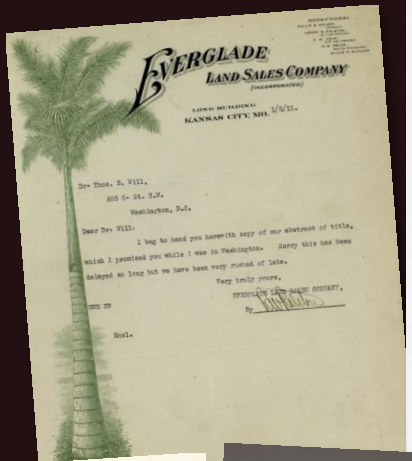


The University of Florida Digital Library Center & UF Digital Collections





PRINT SEND SHARE

UFDC

University of Florida Digital Collections

Search Collection:

Go

1 2 3 4 5 6 7 8

UFDC HOME ADVANCED SEARCH FULL TEXT SEARCH MY COLLECTIONS BROWSE PARTNERS

The University of Florida Digital Collections (UFDC) hosts more than 100 outstanding digital collections, containing over 4 million pages of unique manuscripts and letters, antique maps, rare children's literature books, newspapers, historic photographs, oral histories, and more. The University of Florida Digital Collections (UFDC) enables users to find unique and rare digitized materials held at the University of Florida and partner institutions.

With UFDC, remote and local researchers have free, open access to the full content of the resource. This is a constantly growing collection of resources. The search box above searches across all the digital resources in all the collections. By clicking on the icons below, you can view and search individual collections.

LIST VIEW

BRIEF VIEW

TREE VIEW

ARTS, HUMANITIES AND SOCIAL SCIENCES COLLECTIONS



Arts Collections



Baldwin Library of Historical Children's Literature



History and Heritage Collections



Humanities Collections and the Public Sphere



Literature Collections

SCIENCE AND TECHNOLOGY COLLECTIONS



Herbarium Collections



Sciences Collections



Partners

&

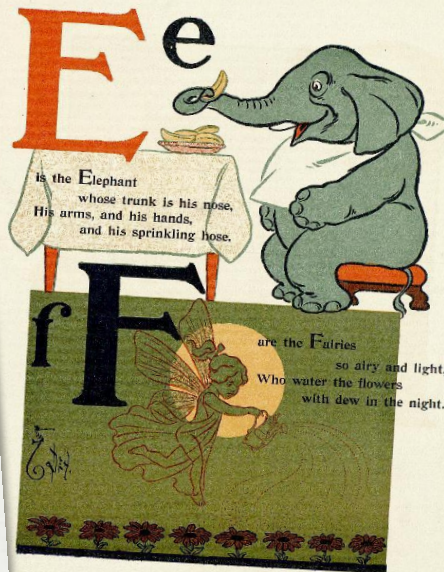
Contributing Institutions

(as of April 2011)

- Archives Nationales d’Haïti
- Caribbean Studies Association
- Flagler College
- Florida Agricultural and Mechanical University
- Florida International University
- Florida Museum of Natural History
- Florida State University
- Florida State House of Representatives
- Florida National Guard
- Frost Art Museum
- Fundación Global Democracia y Desarrollo
- George Washington University Law Library
- GPO
- HARN Art Museum
- Harvard University Law Library
- Hendry County Public Library System
- HCPL
- HistoryMiami (formerly the Historical Museum of Southern Florida)
- Institute of Advanced Legal Studies Library
- Jacksonville Public Library
- Jbillet Architects
- KITLV
- Kluu Library, Cincinnati - Hebrew Union College - Jewish Institute of Religion
- LA Law Library
- Law Library Microform Consortium
- Library of Congress Law
- MANIOC
- Matheson Museum
- Max Planck Institute for Comparative and International Law Studies Library – Hamburg
- Max Planck Institute for Comparative and International Law Studies Library – Heidelberg
- Monroe County Public Library
- NLG
- National Library of Guyana
- National Library of Jamaica
- National Library Service of Barbados
- New College of Florida
- Oxford University
- Panama Canal Museum
- Perkins Library, Duke University
- Pontificia Universidad Católica Madre y Maestra
- Publisher
- Portificia Universidad Católica de Puerto Rico
- Rossica Society of Russian Philately
- Saint Louis University
- Sanibel Public Library
- Schoolhouse Theater
- Southwest Florida Library Network
- State Library and Archives of Florida
- Stetson University, duPont-Ball Library
- Swisher Library
- Tolomato Cemetery Preservation Association
- U.S. Army JAG School
- U.S. Embassies and Consulates
- Universidad de Oriente, Venezuela
- University of Central Florida
- UF
- University of Florida
- University of Hawaii Law Library
- University of Memphis
- University of Miami Libraries
- University of Michigan Law Library
- University of North Florida
- University of Puerto Rico
- University of South Florida
- University of the Netherlands Antilles
- University of the West Indies
- University of Virgin Islands
- University of West Florida
- University Press of Florida
- Water Conservation Project
- Wider Caribbean Sea Turtle Network
- WOLF TEST
- Wolfsonian Institution
- Yale University



BALDWIN LIBRARY OF CHILDREN'S LITERATURE
Digital Collection



quite dull and stupid for things to go on in the common way

So she set to work, and very soon finished off the cake.

"Curiouser and curiouser!" cried Alice, (she was so surprised that she quite forgot how to speak good English.) "now I'm opening out like the largest telescope that ever was! Goodbye, feet!" (for when she looked down at her feet, they seemed almost out of sight, they were getting so far off) "oh, my poor little feet, I wonder who will put on your shoes and stockings for you now, dears? I'm sure I can't! I shall be a great deal too far off to bother myself about you: you must manage the best way you can — but I must be kind to them," thought Alice, "or perhaps they won't walk the way I want to go! Let me see: I'll give them a new pair of boots every Christmas."

And she went on planning to herself how she would manage it.



Crusoe loading his raft.

SHOW TABLE OF CONTENTS

PRINT SEND ADD SHARE

Group Title: 3 little kittens

Title: The 3 little kittens

CITATION

THUMBNAILS

PAGE IMAGE

ZOOMABLE

Related Images



UNIVERSITY of FLORIDA
Baldwin Library of Historical Children's Literature



Front Cover



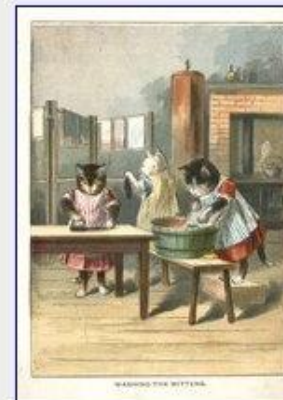
Page 1



Page 2



Page 3



Page 4



Page 5



SEARCHING FOR THE MITTENS.



WASHING THE MITTENS.

SHOW TABLE OF CONTENTS

THUMBNAIL



Click on Thumbnail to Recenter Image



UNIVERSITY of FLORIDA
Baldwin Library of Historical Children's Literature



PRINT SEND ADD SHARE

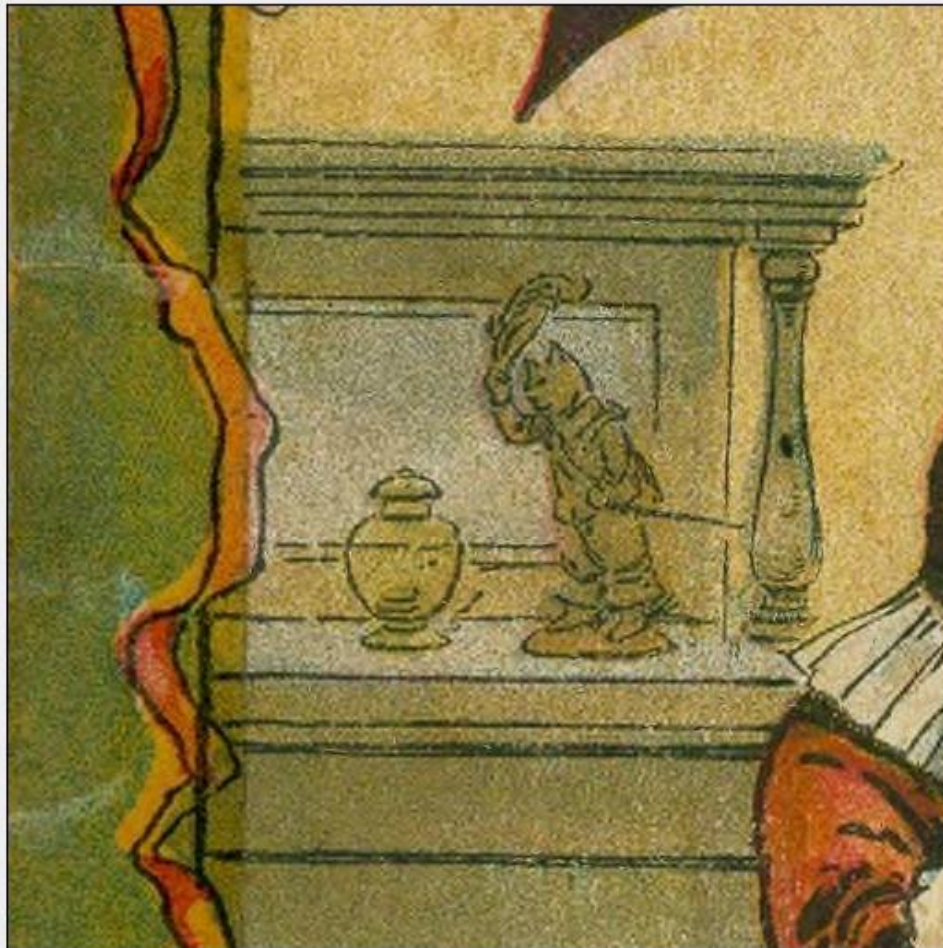
Group Title: 3 little kittens

Title: The 3 little kittens

CITATION THUMBNAILS PAGE IMAGE ZOOMABLE

Go To: Front Cover

NEXT LAST



NEXT LAST

FLORIDA DIGITAL NEWSPAPER LIBRARY

YESTERDAY'S NEWS FOR TODAY'S READERS

The Metropolis.
 JACKSONVILLE, FLORIDA, MONDAY, DECEMBER 21, 1942
 PUBLISHED WEEKLY
 Vol. 1, No. 42

Another Metropolis Goes to Press the Richest, the Most Successful Year in the History of Jacksonville Will Have Passed Into History
 Associated Press

RAILROAD DISASTER
 Will To-Morrow's Sun Shine as Brightly?
GRIM REAPER IS BUSY
 DEATH INVADERS SEVERAL HOMES
 President People of This City Puts Army
 ARE GREATLY IMPROVED.

S. A. L. TRAIN HELD UP BY BOLD ROBBERS TO-DAY
 Train was bound from Richmond to Jacksonville by South-Florida Coast Line.
INVESTIGATING THAT BABY CASE
 General's Jery Will Bear This Afternoon
AN IMPORTANT DEAL IN VALUABLE TIMBER LANDS
 D. M. Flynn Pays \$200,000 in Cash for Pine County Property.

CHARLES CHURCH WILL TELL HIS SIDE OF TRAGEDY
 Young Man Charged With the Murder of C. N. Benjamin Will be Arraigned Wednesday.

THE CONGREGATIONS WILL WATCH THE OLD YEAR OUT
 Impressive Services Will Be Held at Some of the City Churches.

Black Neckties May Be Worn by Enlisted Men
 The black necktie, as issued previously by Quartermaster may be worn by enlisted men on the base until further instructions from Headquarters.
 Enlisted men leaving the base at any time, except those leaving for the base and passing to and from the base, are to wear the black necktie, prescribed by Section II, Circular 71, War Department, dated March 11, 1942, and Base Memorandum 104-1, dated November 25, 1942.

DREW FIELD ECHOES

VOL. 1, No. 42 Published Weekly Drew Field, Tampa, Florida Christmas, 1942

CHRISTMAS WILL BE FULLY OBSERVED

Drew Station Hospital Opened; Most Modern Medical Facilities

In the Station Hospital at Drew Field, which is now nearing completion, the Army is making a tremendous medical and surgical facility to keep healthy the soldiers stationed there.

The fact that the American Army is the healthiest in the world is not the result of chance. "Sound mind in sound body" was the Greek ideal, and the United States Army, too, when a soldier is in good health, he can do his better, he can think more clearly, he is happier.

Best Health Record
 The health of our Army is exceptional. Our men soldiers have an average life expectancy of 60 years, they are 100 percent fit for military duty, and the men at Valley Forge and the men at Bataan are healthier than the men of the Argonne, of the 1917-18 recruits, the rates for tuberculosis and influenza are unusually low. Their hearts are strong, their digestion, tone and self-defense are much less prevalent, living conditions in our camp are much better than in '17 and '18.

The methods of sanitation are so good that typhoid and typhus are incidentally almost nonexistent on entering the service, and these diseases are practically nonexistent in domestic service. The death rate in the Army from typhoid is less than in the World War year of '17 and '18.

It is the U. S. Army Medical Department which keeps the troops in the healthiest condition. The job of Army doctors, since the organization of the Army during the Revolutionary War, has been to conserve the health of the soldier. This accomplishment is done on three factors: selection, prevention and treatment. A great many of our armed forces are practically every continent and corner of the earth.

For some of the farthest overseas there will be undoubtedly no "Fusse on earth and good will toward men," but fighting and staying instead. Last year American soldiers in the Philippines fought the Japanese, American soldiers in the Pacific theater will be fighting for an island against the enemy.

On Christmas Eve, at 6 o'clock, the Enlisted Men's Service Club will give a party for all enlisted men on the base. Refreshments will be served.

(Continued on Page 14)



Second Wartime Yule Plans Made

There will be a brighter Christmas of the day and no mourning developments throughout the world seem to indicate that the United Nations are beginning to share with a few bright glimmers.

The spirit of Christmas among our fighting men is "Peace on Earth and Good Will Toward Men." Those of us in the armed forces in America can count ourselves lucky that we are still able to celebrate this solemn holiday in an appropriate manner. For so many of our armed forces are prospectively every continent and corner of the earth.

For some of the farthest overseas there will be undoubtedly no "Fusse on earth and good will toward men," but fighting and staying instead. Last year American soldiers in the Philippines fought the Japanese, American soldiers in the Pacific theater will be fighting for an island against the enemy.

On Christmas Eve, at 6 o'clock, the Enlisted Men's Service Club will give a party for all enlisted men on the base. Refreshments will be served.

(Continued on Page 14)

Chemical Officer Assigned to Dr.

Chemical Officer Assigned to Dr. Drew Field. The new chemical officer at Drew Field is to become chemical warfare officer for the Enlisted Men's Service Club. He is a graduate of the U.S. Army Chemical School at Edgewood, Maryland. He has two months of experience in the chemical warfare.

He is married and the father of three children. The Enlisted Men's Service Club will give a party for all enlisted men on the base. Refreshments will be served.

(Continued on Page 14)

Christmas Dinner to Be Something to Write Home About

There'll be a part of turkey at the end of the show line on Christmas Day for Drew Field men. And there'll be a lot more besides.

For Christmas dinner, most bases will be decorated. The men will be able to get his fast under the table. The dinner will include fresh fruit, open soup, turkey, dressing, roast goose, sweet potato, green beans, hot rolls, cranberry sauce, and mince and pumpkin pie, set cream, grape skin, fresh fruit, coffee, candy and mixed nuts.



BASE OPERATIONS OFFICER

THE KEY WEST DRUGGIST
 DEVOTED TO HEALTH, BUSINESS AND SCIENCE
 PRINTED BY THOMAS G. OTTO, KEY WEST, FLA., FEB., 1942

THE DRUGGIST
 THE YOUNG WOMAN
 A WARRIOR'S LETTER
 THE BULL TERRIER
 THE BULL TERRIER
 THE BULL TERRIER

You May Save a Life BY THESE FACTS:

DR. KING'S NEW DISCOVERY FOR CONSUMPTION FOR COUGHS AND COLDS.

World's Greatest Remedy CHEST, THROAT AND LUNG DISEASES. It is guaranteed to cure.

Total Retail Price: Regular Size 50c, and \$1.00.

DR. KING'S NEW DISCOVERY FOR CONSUMPTION FOR COUGHS AND COLDS.

DR. KING'S NEW DISCOVERY FOR CONSUMPTION FOR COUGHS AND COLDS.

DR. KING'S NEW DISCOVERY FOR CONSUMPTION FOR COUGHS AND COLDS.

FLORIDA DIGITAL NEWSPAPER LIBRARY

YESTERDAY'S NEWS FOR TODAY'S READERS

HOME

MAP SEARCH

ADVANCED SEARCH

MAP BROWSE

ALL ITEMS

NEW ITEMS

PARTNERS

Select a point below to view the items from or about that location.
Press the SHIFT button, and then drag a box on the map to zoom in.





DIGITAL
LIBRARY
OF THE
CARIBBEAN

BIBLIOTECA
DIGITAL
DEL CARIBE

BIBLIOTHÈQUE
NUMÉRIQUE
DES CARAÏBES



www.dloc.com

A cooperative digital library for
resources from and about the
Caribbean and circum-Caribbean.

UF Newsletters

Dissertations

Data Sets

Projects-in-lieu-of-Theses

Theses

Grants

White Papers

UF Magazines
Technical Reports
Webcasts

Journal Articles

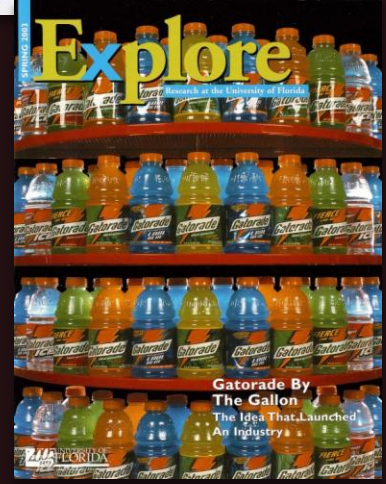
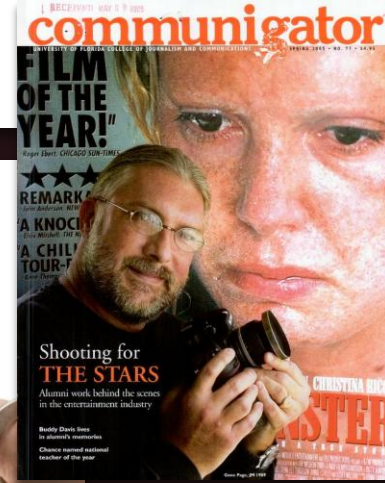
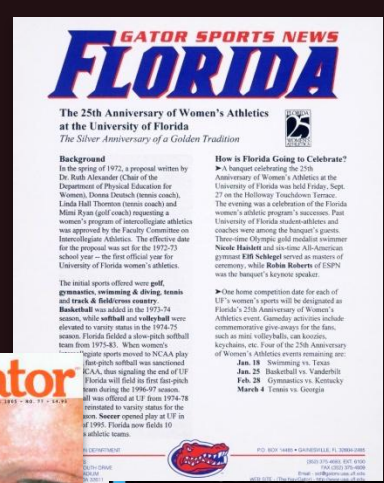
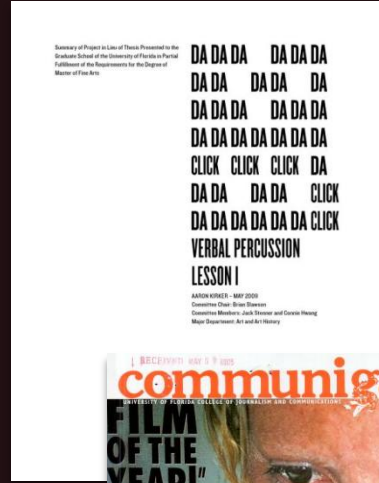
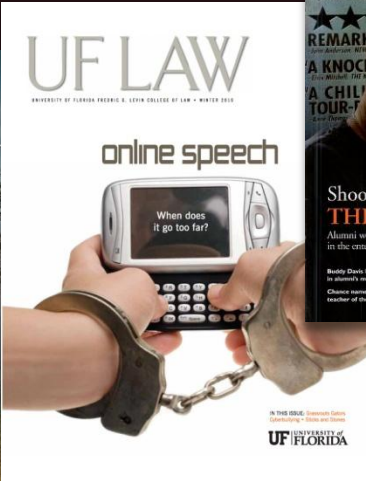
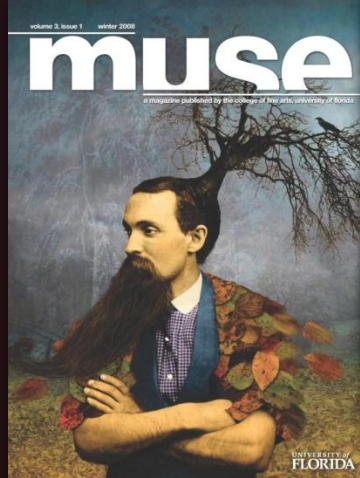
Pre-Prints

Poster Presentations

Meeting Minutes

Post-Prints

Graduation Programs



University of Florida Archives Photograph Collection



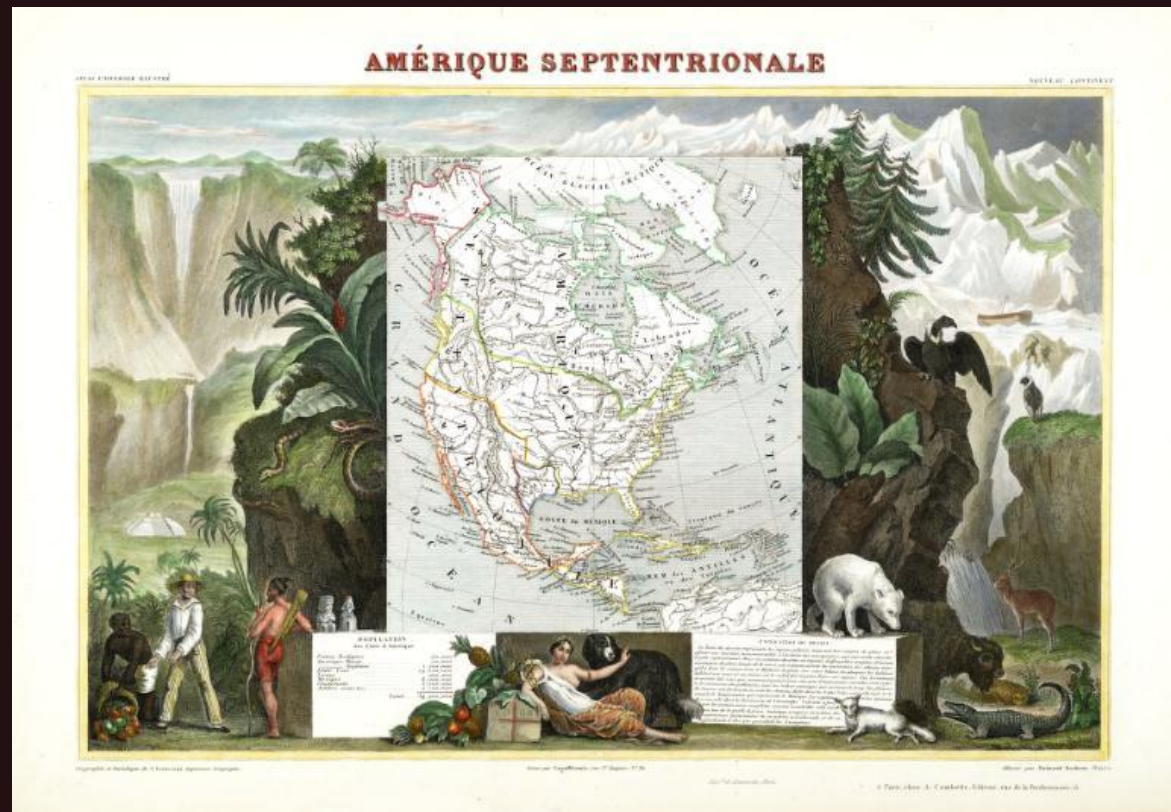
<http://ufdc.ufl.edu/uaphotos>

MAP AND IMAGERY COLLECTIONS



1968 Aerial Photograph of Alachua County

1840 Map of Northern America

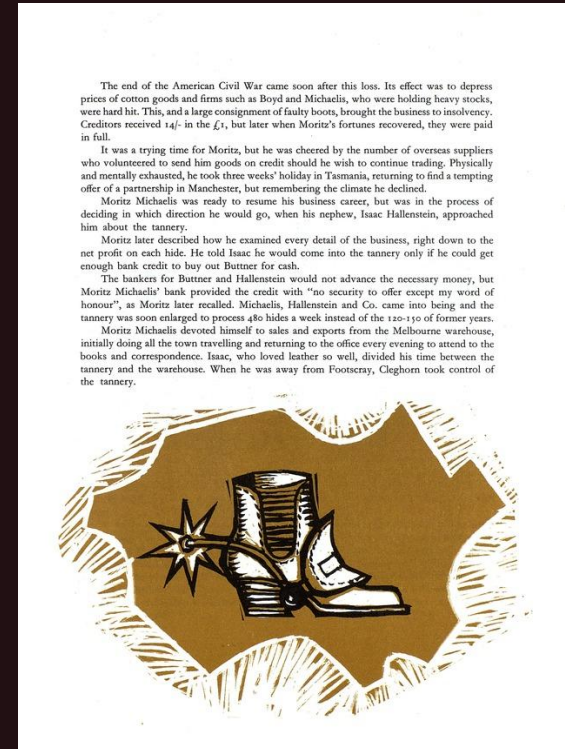
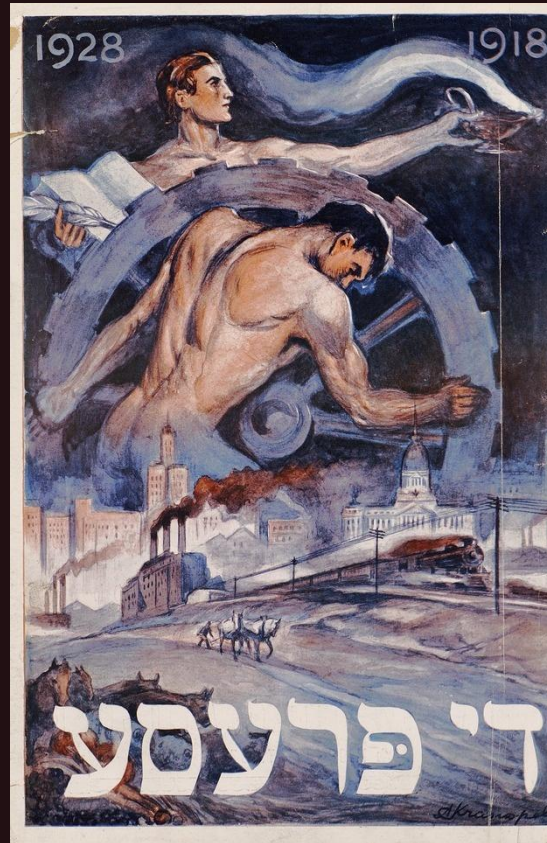


<http://ufdc.ufl.edu/maps>

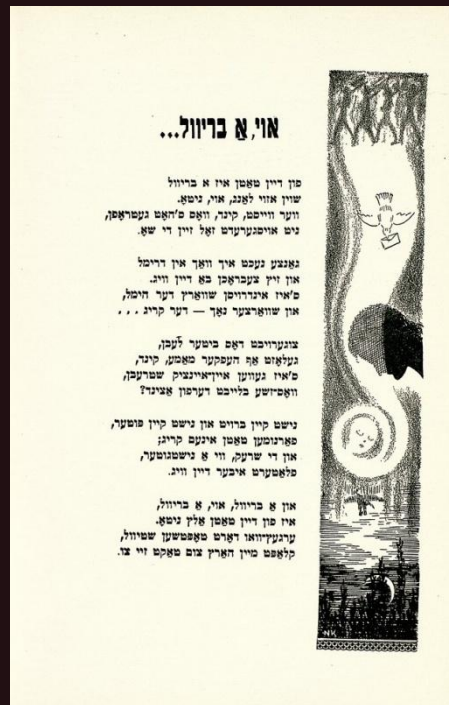
Isser and Rae Price Library of Judaica

- Judaica Photographs
- Newspaper Collection
- Anniversary Collection
- Reverend Safer Collection
- Pink Collection of Sheet Music
- Judaica Memorial Books
- The Yiddish Collection

Di prese yoyvl- numer, 1918-1928



The Michaelis, Hallenstein story, 1864-1964
one hundred years in leather



Shikhelekh in kholem 1940

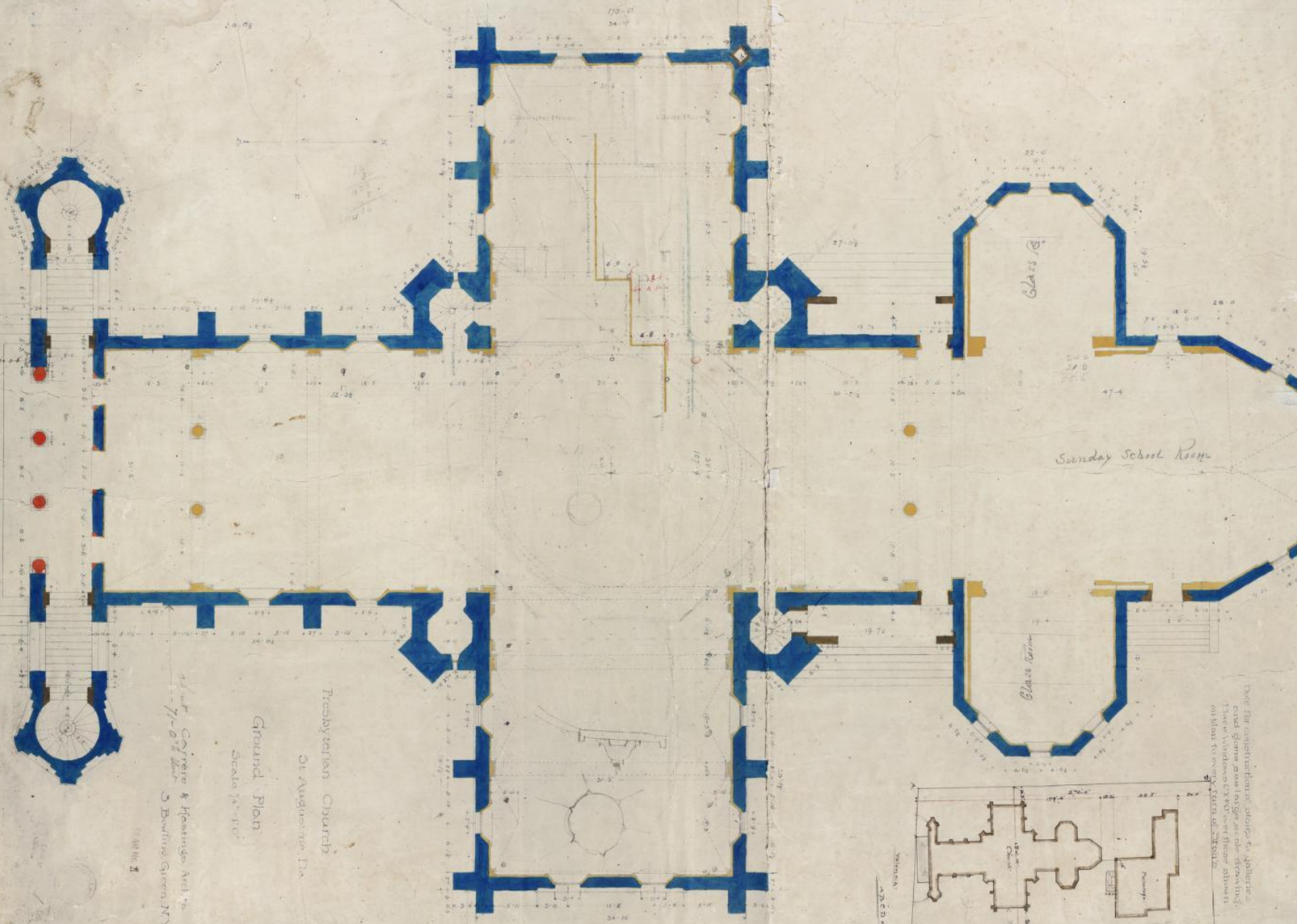
FLORIDA ARCHITECTURE & LANDSCAPE DESIGN

UF Architecture Archives
Alfred Browning Parker Collection
Kenneth Treister Collection
Carrère & Hastings Collection
Florida Institute of Architects Publications

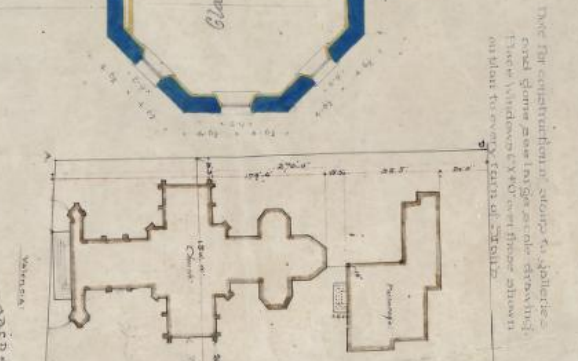


Connors House by William Morgan

<http://ufdc.ufl.edu/fald>



Memorial Presbyterian Church
 St. Augustine, Fla.
 Ground Plan
 Scale 1/4" = 1'-0"
 1889
 J. C. D. Moore & Hoisington, Archts.
 5 Bowling Green, N.Y.



Note: The construction starts to indicate
 cost plans a few large scale drawings
 these windows by 1/4" or those shown
 on plan to every 1/4" of 1/4"

Memorial Presbyterian Church (St. Augustine, FL) - 1889



QUICK LINKS

- Edit this item
- Complete METS
- SobekCM Service METS
- Greenstone XML File

PRINT SEND ADD SHARE

Title: Architectural Drawings of the Memorial Presbyterian Church (St. Augustine, Fla.)

CITATION MAP IT! THUMBNAILS PAGE IMAGE ZOOMABLE

Map It!

Map Satellite Hybrid Terrain

Map data ©2010 Google - Terms of Use



Contact Us | Permissions | Preferences | Technical Aspects | Statistics | Admin | Privacy Policy

