

AW 19  
UK & EIRE

REGATTA   
GREAT OUTDOORS®

WE ARE YOUR DOOR  
TO THE GREAT OUTDOORS





WE ARE  
**PERFORMANCE**



WE ARE  
**STYLE**

## CONTENTS

06 | MEN'S ACTIVE  
36 | MEN'S LIFESTYLE  
51 | WOMEN'S ACTIVE  
76 | WOMEN'S LIFESTYLE

95 | KIDS' ACTIVE  
108 | KIDS' LIFESTYLE  
117 | LITTLE ADVENTURERS  
120 | ADULTS ACCESSORIES

141 | KIDS' ACCESSORIES  
148 | DOG ACCESSORIES  
158 | FABRIC TECHNOLOGIES  
161 | SIZE CHARTS

164 | HONESTY PROJECT  
165 | INDEX  
167 | SYMBOLS



WE ARE  
COUNTRY

WE ARE  
**FAMILY**



MEN'S  
ACTIVE



# SACRAMENTO V 3-IN-1

RMP268



2



REFLECTIVE



**Size S-3XL**

- Waterproof and breathable Isotex 10000 stretch lightweight ripstop polyester fabric
- Breathability rating 10,000/m<sup>2</sup>/24hrs
- Highly reflective printed stretch panels in strategic zones for enhanced visibility
- Durable water repellent finish
- Taped seams
- Grown on technical wire peaked hood with adjusters
- Hi-tech water repellent centre front zip with inner zip and chin guard
- 2 lower pockets with hi-tech water repellent zips
- Chest pocket with hi-tech water repellent zip
- Articulated sleeves for enhanced range of movement
- Adjustable cuffs

- Inner**
- Extol comfort stretch fabric
  - Adjustable shockcord hem
  - Stretch binding to collar, cuffs and hem



1. Burnt Salmon/Deep Teal/Deep Teal Reflective (Deep Teal) 696
2. Oxford Blue/Prussian/Prussian Reflective (Oxford Blue) 698
3. Magnet/Black/Black Reflective (Black) 699

# GLYDER V 3-IN-1

RMP269



1



**Size S-3XL**

- Waterproof and breathable Isotex 15000 100% polyester stretch fabric
- Breathability rating 10,000/m<sup>2</sup>/24hrs
- Durable water repellent finish
- Taped seams
- Grown on hood
- Hi-tech water repellent centre front zip with inner zip and chin guard
- 2-way underarm ventilation zippers
- 2 lower pockets with hi-tech water repellent zips
- 2 zipped chest pockets
- Inner zipped security pocket
- Articulated sleeves for enhanced range of movement
- Adjustable cuffs
- Adjustable shockcord hem

- Inner**
- Warm backed Softshell fabric
  - Durable water repellent finish
  - 2 zipped lower pockets
  - Stretch binding to cuffs and hem



1. Magnet (Black) 91B
2. Deep Teal (Magnet) 91E

# WENTWOOD IV 3-IN-1

RMP270



Size S-3XL

- Waterproof and breathable Isotex 15000 100% polyester stretch fabric
- Breathability rating 10,000/m<sup>2</sup>/24hrs
- Durable water repellent finish
- Taped seams
- Grown on technical hood with 2 way adjustment and reinforced peak for enhanced fit and protection
- Inner stormflap with chin guard
- Articulated sleeves for enhanced range of movement
- 2 lower pockets with hi-tech water repellent zips
- 1 concealed chest zip pocket
- Internal map pocket
- Adjustable cuffs
- Adjustable shockcord hem

**Inner**

- 220gsm fleece side panels and arms
- Thermo-Guard insulation
- 2 zipped lower pockets
- Stretch binding to collar, cuffs and hem



1. Prussian/Navy (Navy) **91Q**
2. Black/Magnet (Magnet) **92B**
3. Cypress Green/Bayleaf (Bayleaf) **911**

# NORTHTON III 3-IN-1

RMP271



Size S-3XL

- Waterproof and breathable Isotex 10000 100% polyester stretch fabric
- Breathability rating 10,000/m<sup>2</sup>/24hrs
- Durable water repellent finish
- Taped seams
- Concealed hood with adjusters
- Inner security pocket
- 2 lower zipped welt pockets with stud fastening
- 2 X chest patch pockets with snap fastenings
- Adjustable cuffs
- Adjustable shockcord hem

**Inner**

- 145gsm marl fleece
- 2 lower pockets



1. Black (Black) **808**
2. Prussian (Black) **913**
3. Deep Teal (Black) **916**



# TELMAR III 3-IN-1

RMP279



Size S-3XL

- Waterproof Hydrafort peached polyester fabric
- Taped seams
- Durable water repellent finish
- Polyester taffeta lined
- Concealed hood with adjusters
- 2 zipped lower pockets
- Adjustable cuffs
- Adjustable shockcord hem

### Inner

- 140gsm mini stripe microfleece
- 2 lower pockets



1. Navy/Prussian (Navy) 53S
2. Bayleaf/Cypress Green (Cypress Green) 926
3. Black/Magnet (Magnet) 92B



# VOLTER SHIELD

RMP272



Size S-3XL

- Waterproof and breathable Isotex 5000 100% polyester marl fabric
- Breathability rating 10,000/m<sup>2</sup>/24hrs
- Durable water repellent finish
- Taped seams
- Thermo-Guard insulation
- Grown on hood with adjusters
- 1 concealed chest zip pocket
- 2 lower pockets with hi-tech water repellent zips
- Inner zipped security pocket
- Adjustable cuffs
- Adjustable shockcord hem



1. Navy 540
2. Magnet 92E



Waterproof and Breathable

3 Temperature Settings

Machine Washable

Over 6 hours Continuous Heat

Lightly Insulated

Power Bank Battery Operated\*

**RBE001 - HEATED JACKET BATTERY PACK**

\*Sold separately

**Heated Technology**

- Active battery powered heating system
- 2 heated chest panels and 1 heated back panel
- Easy on/off button
- 3 temperature settings
- Safety cut off

# HIGHSIDE IV

RMP273



Size S-3XL

- Waterproof and breathable Isotex 10000 textured polyester fabric
- Breathability rating 10,000/m<sup>2</sup>/24hrs
- Durable water repellent finish
- Taped seams
- Thermo-Guard insulation
- Detachable technical hood with adjusters
- Chest pocket with hi-tech water repellent zip
- 2 zipped lower pockets
- Inner zipped security pocket
- Articulated sleeves for enhanced range of movement
- Adjustable cuffs
- Adjustable shockcord hem



1. Bayleaf 905
2. Prussian 56M
3. Magnet 92E

# LANGA STRETCH

RMP277



Size S-3XL

- Waterproof and breathable Isotex 10000 stretch lightweight ripstop polyester fabric
- Breathability rating 10,000/m<sup>2</sup>/24hrs
- Durable water repellent finish
- Synthetic Warmloft down-touch water repellent insulation
- Taped seams
- Full stretch lining
- Grown on technical wire peaked hood with adjusters
- Inner stormflap with chin guard
- Articulated sleeves for enhanced range of movement
- 2 zipped lower pockets and 1 zipped chest pocket
- Stretch binding to cuffs and hem



1. Oxford Blue/Prussian 698
2. Cypress Green/Bayleaf 911
3. Burnt Salmon/Magnet 919
4. Black/Magnet 92B

# GARFORTH III

RMP274



1



REFLECTIVE



## Size S-3XL

- Waterproof and breathable Isotex 10000 100% polyester fabric
- Breathability rating 8,000/m<sup>2</sup>/24hrs
- Highly reflective printed stretch panels in strategic zones for enhanced visibility
- Durable water repellent finish
- Taped seams
- Thermo-Guard insulation
- Hi-tech water repellent centre front zip
- Inner stormflap with chin guard
- Grown on hood
- Articulated sleeves for enhanced range of movement
- 2 lower pockets with hi-tech water repellent zips
- Internal map pocket
- Adjustable cuffs
- Adjustable shockcord hem



1. Oxford Blue/Prussian Reflective **698**
2. Black/Magnet Reflective **92B**
3. Cypress Green/Bayleaf Reflective **911**

# LARGO II

RMP276

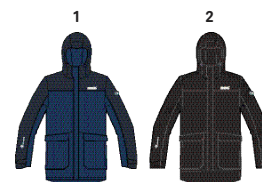


2



## Size S-3XL

- Waterproof and breathable Isotex 5000 coated polyester fabric
- Breathability rating 5,000/m<sup>2</sup>/24hrs
- Durable water repellent finish
- Taped seams
- Thermo-Guard insulation
- Grown on technical hood with adjusters
- 2 way centre front zip
- 2 zipped lower pockets
- Adjustable cuffs
- Adjustable shockcord hem



1. Prussian/Navy **91Q**
2. Black **800**

# HACKBER

RMP275



**Size S-3XL**

- Waterproof and breathable Isotex 10000 100% polyester stretch fabric
- Breathability rating 10,000/m<sup>2</sup>/24hrs
- Durable water repellent finish
- Taped seams
- Thermo-Guard insulation
- Polyester lining with strategic warm fleece panels
- Concealed hood with adjusters
- 2 zipped lower pockets
- Inner security pocket
- Adjustable shockcord hem and hood



1. Deep Teal **8LM**
2. Black **800**
3. Prussian **56M**

# FABENS II

RMP247



**Size S-3XL**

- Waterproof and breathable Isotex 5000 coated polyester fabric
- Breathability rating 5,000/m<sup>2</sup>/24hrs
- Durable water repellent finish
- Taped seams
- Thermo-Guard insulation
- Concealed hood with adjusters
- 2 zipped lower and 2 zipped chest pockets
- Inner zipped security pocket
- Adjustable cuffs
- Adjustable shockcord hem



1. Oxford Blue/Prussian **698**
2. Prussian/Navy **91Q**
3. Burnt Salmon/Magnet **919**
4. Black/Magnet **92B**

# TARREN

RMP254



1

**Size S-3XL**

- Waterproof and breathable Isotex 5000 coated polyamide fabric
- Durable water repellent finish
- Taped seams
- Fleece lining to body and hood
- Grown on hood
- 2 zipped lower pockets
- Stretch binding to cuffs and hem



- 1. Black **800**
- 2. Oxford Blue (Prussian) **92Z**
- 3. Burnt Salmon **8AK**
- 4. Magnet **92E**

# THORNRIDGE II

RMP281



1

**Size S-3XL**

- Waterproof Hydrafort peached polyester fabric
- Taped seams
- Durable water repellent finish
- Thermo-Guard insulation
- Polyester lining with strategic warm fleece panels
- Concealed hood with adjusters
- 2 zipped lower pockets
- Adjustable shockcord hem



- 1. Magnet **92E**
- 2. Navy **540**
- 3. Black **800**
- 4. Deep Teal/Magnet **92Q**
- 5. Bayleaf/Black **3FF**
- 6. Oxford Blue/Prussian **698**

# BIRCHDALE

RMW279



**Size S-3XL**

- Waterproof and breathable Isotex 10000 100% polyester stretch fabric
- Breathability rating 10,000/m<sup>2</sup> /24hrs
- Durable water repellent finish
- Taped seams
- Grown on technical hood with adjusters
- Hi-tech water repellent centre front zip with inner zip and chin guard
- Articulated sleeves for enhanced range of movement
- 2 zipped lower and 1 zipped chest pocket
- Internal map pocket
- Adjustable cuffs
- Adjustable shockcord hem



1. Surf Spray/Navy 8TR
2. Black 800
3. Deep Teal/Magnet 92Q



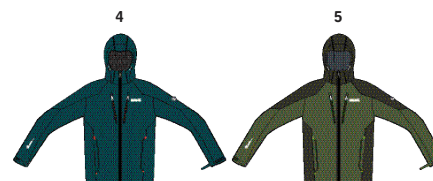
# CALDERDALE III

RMW305



**Size S-3XL**

- Waterproof and breathable Isotex 5000 coated polyester fabric
- Breathability rating 5,000/m<sup>2</sup>/24hrs
- Durable water repellent finish
- Taped seams
- Part mesh part polyester taffeta lining
- Concealed hood with adjusters
- 2 zipped lower and 2 zipped chest pockets
- Internal map pocket
- Adjustable cuffs
- Adjustable shockcord hem



1. Black 800
2. Oxford Blue/Prussian 698
3. Prussian/Navy 91Q
4. Deep Teal 8LM
5. Cypress Green/Bayleaf 911



# MATT

RMW201



**Size S-3XL**

- Waterproof Hydrafort peached polyester fabric
- Durable water repellent finish
- Taped seams
- Mesh lined
- Concealed hood with adjusters
- Adjustable cuffs
- 2 zipped lower pockets
- Inner security pocket
- Adjustable shockcord hem



- 1. Oxford Blue/Iron 914
- 2. Deep Teal/Magnet 92Q
- 3. Navy/Navy 081
- 4. Black 800

# LYLE IV

RMW283



**Size S-3XL**

- Waterproof and breathable Isolite 5000 lightweight polyamide fabric
- Breathability rating 5,000/m<sup>2</sup> /24hrs
- Durable water repellent finish
- Taped seams
- Mesh lined
- Concealed hood with adjusters
- Reflective trim
- 2 zipped lower pockets
- Adjustable shockcord hem
- Packaway - lower left side pocket converts into belt bag



- 1. Black 800
- 2. Navy 540
- 3. Pepper 9Y6
- 4. Iron 7NV
- 5. Light Steel 82F
- 6. Lime Punch 3N8
- 7. Surf Spray 46J

# PACK-IT JACKET III

RMW281



**Size XS-3XL**

- Waterproof and breathable Isolite 5000 lightweight polyamide fabric
- Breathability rating 5,000/m<sup>2</sup> /24hrs
- Durable water repellent finish
- Taped seams
- Unlined
- Adjustable shockcord hood
- 2 lower pockets
- Packs away into stuff sack



1. Oxford Blue 15
2. Black 800
3. Navy 540
4. Magma 3N9
5. Lime Punch 3N8
6. Pepper/Seal Grey 9X2

# MEN'S PACK-IT OVERTROUSERS

RMW149



**Size XS-3XL**

- Waterproof and breathable Isolite 5000 lightweight polyamide fabric
- Breathability rating 5,000/m<sup>2</sup> /24hrs
- Durable water repellent finish
- Taped seams
- Elasticated waist
- 2 side pocket openings
- Packs away into stuff sack



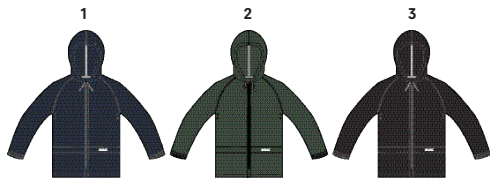
1. Navy 540
2. Black 800
3. Bayleaf 905



# STORMBREAK JACKET

**W408****Size S-3XL**

- Waterproof Hydrafort polyester fabric
- Durable water repellent finish
- Taped seams
- Grown on hood
- Elasticated cuffs
- 2 lower pockets
- Adjustable drawcord hem



1. Navy 540
2. Dark Olive 275
3. Black 800

# STORMBREAK OVERTROUSERS

**W308****Size S-3XL**

- Waterproof Hydrafort polyester fabric
- Durable water repellent finish
- Taped seams
- Elasticated waist
- 2 side pocket openings
- Press studs at hem



1. Navy 540
2. Dark Olive 275
3. Black 800

# HALTON III

RMN136



4



REFLECTIVE

Size S-3XL

- Lightweight 20d polyamide fabric
- Highly reflective printed panels in strategic zones for enhanced visibility
- Durable water repellent finish
- Lightweight Alpaca wool blend insulation to keep you warm even when wet
- 2 zipped lower pockets
- Stretch binding to collar and hem



1. Oxford Blue/Prussian/Prussian Reflective **698**
2. Burnt Salmon/Deep Teal/Deep Teal Reflective **696**
3. Black/Black/Black Reflective **826**
4. Deep Teal/Magnet/Magnet Reflective **92Q**

# HALTON B/W III HYBRID

RMB090



2



REFLECTIVE

Size S-3XL

- Lightweight 20d polyamide fabric
- Highly reflective printed panels in strategic zones for enhanced visibility
- Durable water repellent finish
- Lightweight Alpaca wool blend insulation to keep you warm even when wet
- Extol stretch inserts
- Inner zip guard
- 2 zipped lower pockets
- Stretch binding to armholes, hem and collar



1. Oxford Blue/Prussian/Prussian Reflective **698**
2. Burnt Salmon/Deep Teal/Deep Teal Reflective **696**
3. Black/Magnet/Magnet Reflective **92B**

# WHITEHILL

RMN122



Size S-3XL

- Lightweight 20d polyamide fabric
- Durable water repellent finish
- Premium duck down fill - 90% Down/10% Feathers
- 600 fill power
- Easily compressible
- Lightweight fill
- Inner zip guard
- 2 zipped lower pockets
- Stretch binding to cuffs and hem
- Packs away into inner pouch



1. Black **800**
2. Prussian **56M**
3. Magnet **92E**
4. Oxford Blue **15**
5. Deep Teal **8LM**

# NEVADO III

RMN137



Size S-3XL

- 75d polyester ripstop fabric
- Durable water repellent finish
- Thermo-Guard insulation
- Heavyweight fill
- Grown on hood with adjusters
- Inner zip guard
- Inner zipped security pocket
- 2 zipped lower pockets
- Adjustable cuffs
- Adjustable shockcord hem



1. Prussian/Navy **91Q**
2. Cypress Green/Bayleaf **911**
3. Magnet/Black **699**
4. Oxford Blue/Navy **0LB**

# ORTON

RMN139



Size S-3XL

- Lightweight 20d polyamide fabric
- Durable water repellent finish
- Wool effect fabric overlay panels
- Synthetic Warmloft down-touch water repellent insulation
- Grown on hood with adjusters
- 2 lower pockets and 1 zipped chest pocket
- Inner zipped security pocket
- Adjustable shockcord hem



1. Bayleaf/Magnet **929**
2. Prussian/Magnet **93E**
3. Magnet/Black **699**
4. Deep Teal/Magnet **92Q**

# FREEZEWAY

RMN140



Size S-3XL

- Lightweight 20d polyamide fabric
- Durable water repellent finish
- Synthetic Warmloft down-touch water repellent insulation
- Medium weight fill
- Inner zip guard
- 2 zipped lower pockets
- Stretch binding to collar, cuffs and hem



1. Prussian/Navy 91Q
2. Burnt Salmon/Magnet 919
3. Magnet/Black 699
4. Black 800
5. Deep Teal/Magnet 92Q
6. Bayleaf/Cypress Green 926
7. Oxford Blue/Prussian 698

# FREEZEWAY B/W

RMB096



Size S-3XL

- Lightweight 20d polyamide fabric
- Durable water repellent finish
- Synthetic Warmloft down-touch water repellent insulation
- Medium weight fill
- Inner zip guard
- 2 zipped lower pockets



1. Black 800
2. Bayleaf 905
3. Oxford Blue/Prussian 698
4. Magnet/Deep Teal 94Q

# ANDRESON IV HYBRID

RMN127



Size S-3XL

- Extol Stretch hood, sleeves and side panels for fit and freedom of movement
- Synthetic Warmloft down-touch water repellent insulation
- Durable water repellent finish to body
- Easily compressible
- Lightweight fill
- Inner zip guard
- 2 zipped lower pockets
- Stretch binding to hood opening, cuffs and hem



1. Black/Black 826
2. Navy/Prussian 53S
3. Deep Teal/Burnt Salmon 94I
4. Magnet/Deep Teal 94Q
5. Prussian/Oxford Blue 2VI
6. Bayleaf/Lime Green 94Z
7. Oxford Blue/Magnet X76
8. Magnet/Bayleaf W3R

# BESTLA HYBRID

RMN128



1

Size S-3XL

- Extol Stretch sleeves and side panels for fit and freedom of movement
- Synthetic Warmloft down-touch water repellent insulation
- Durable water repellent finish to body
- Easily compressible
- Lightweight fill
- Inner zip guard
- 2 zipped lower pockets
- Stretch binding to collar, cuffs and hem



- 1. Bayleaf/Cypress Green 926
- 2. Deep Teal/Magnet 92Q
- 3. Navy/Prussian 53S
- 4. Black/Magnet 92B

# HEWITTS V

RML182



2

REFLECTIVE

Size S-3XL

- Warm backed woven Softshell XPT fabric
- Breathability rating 10,000/m<sup>2</sup>/24hrs
- Highly reflective printed panels in strategic zones for enhanced visibility
- Durable water repellent finish
- Wind resistant membrane fabric
- Grown on technical hood with adjusters
- Inner zip guard
- 2-way underarm ventilation zippers
- 2 zipped lower pockets
- Adjustable cuffs
- Adjustable shockcord hem



- 1. Oxford Blue/Prussian Reflective (Magnet) 698
- 2. Lime Green/Bayleaf Reflective (Magnet) FBH
- 3. Deep Teal/Magnet Reflective (Magnet) 92Q
- 4. Black/Black Reflective (Magnet) 826

# HENTANA

RML179



2

Size S-3XL

- Extol - 50% wool/50% polyester
- 2 zipped lower pockets and 1 zipped chest pocket
- Stretch binding to collar, cuffs and hem



- 1. Prussian 56M
- 2. Magnet 92E

## CARPO II HYBRID

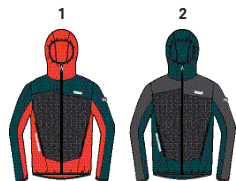
RML183



1

Size S-3XL

- Isoflex - Active stretch fabric - 92% polyester, 8% elastane
- Wool mix panels to the body
- Wind resistant
- Grown on hood
- 2 zipped lower pockets
- Stretch binding to hood opening, cuffs and hem



1. Burnt Salmon/Magnet/Deep Teal **919**
2. Deep Teal/Magnet/Magnet **92Q**
3. Black/Magnet/Black **92B**
4. Oxford Blue/Magnet/Prussian **X76**

## TARVOS II

RML169



2

Size S-3XL

- Lightweight Softshell XPT stretch fabric
- Breathability rating 10,000/m<sup>2</sup>/24hrs
- Wind resistant membrane fabric
- Durable water repellent finish
- Grown on hood with rear adjuster
- Inner zip guard
- Articulated sleeves for enhanced range of movement
- 2 zipped lower pockets and 1 zipped chest pocket
- Mesh lined pockets for breathability
- Stretch binding to hood opening, cuffs and hem



1. Oxford Blue/Prussian **698**
2. Deep Teal/Magnet **92Q**

## HASKA HYBRID

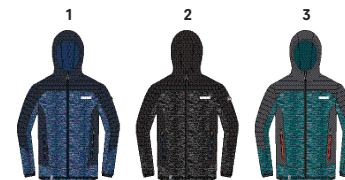
RML184



2

Size S-3XL

- Marl polyester Softshell
- Polyamide overlays with durable water repellent finish
- Extol Stretch side panels
- Wind resistant
- Grown on hood
- 2 zipped lower pockets
- Stretch binding to hood opening, cuffs and hem



1. Prussian/Navy **91Q**
2. Black/Black/Black **826**
3. Deep Teal/Magnet/Magnet **92Q**

# FOLEY HYBRID

RML185



Size S-3XL

- Marl polyester Softshell
- Extol stretch side and underarm panels
- Wind resistant
- 2 zipped lower pockets and 1 zipped chest pocket
- Stretch binding to collar, cuffs and hem



1. Prussian/Navy/Magnet **91Q**
2. Deep Teal/Magnet/Magnet **92Q**
3. Cypress Green/Bayleaf/Magnet **911**
4. Black/Magnet/Magnet **92B**

# YARE II

RML186



Size S-3XL

- Extol - warm backed knitted stretch fabric
- 2 zipped lower pockets and 1 zipped chest pocket
- Stretch binding to collar, cuffs and hem



1. Oxford Blue/Prussian/Seal Grey **698**
2. Burnt Salmon/Deep Teal/Sea Grey **696**
3. Lime Green/Bayleaf/Seal Grey **FBH**
4. Black/Magnet/Seal Grey **92B**
5. Prussian/Navy/Seal Grey **91Q**

# AREC II

RML153

SOFTSHELL



Size S-3XL

- Warm backed woven stretch Softshell fabric
- Durable water repellent finish
- Wind resistant
- Grown on hood with adjusters
- 2 zipped lower pockets
- Stretch binding to cuffs and hem



1. Black (Seal Grey) **59**
2. Navy (Seal Grey) **744**
3. Burnt Salmon/Deep Teal **696**
4. Prussian/Oxford Blue **2VI**
5. Bayleaf/Cypress Green **926**

**CARBY**

RML173

**Size S-3XL**

- Warm backed marl Softshell fabric
- Durable water repellent finish
- Wind resistant
- 2 zipped lower pockets
- Adjustable shockcord hem



- 1. Seal Grey **038**
- 2. Navy **540**
- 3. Black **800**
- 4. Prussian **56M**

**CERA III**

RML107

**Size S-3XL**

- Warm backed woven stretch Softshell fabric
- Durable water repellent finish
- Wind resistant
- 2 zipped lower pockets
- Adjustable shockcord hem



- 1. Black (Black) **808**
- 2. Oxford Blue (Navy) **05J**
- 3. Iron/Oxford Blue **94W**
- 4. Navy (Navy) **272**
- 5. Bayleaf (Bayleaf) **2G8**
- 6. Deep Teal (Magnet) **91E**
- 7. Brown Tan (Black) **W4W**

**LANKIN II B/W**

RMB085

**Size S-3XL**

- Lightweight Softshell XPT stretch fabric
- Breathability rating 10,000/m<sup>2</sup>/24hrs
- Wind resistant membrane fabric
- Durable water repellent finish
- Inner zip guard
- 2 zipped lower pockets
- Mesh lined pockets for breathability
- Stretch binding to armholes, hem and collar



- 1. Prussian/Oxford Blue **2VI**
- 2. Deep Teal/Burnt Salmon **94I**
- 3. Black/Magnet **92B**



# BRADWELL II B/W

RMB053



2

**Size S-3XL**

- Warm backed woven stretch Softshell fabric
- Durable water repellent finish
- Wind resistant
- 2 zipped lower pockets



1. Black (Iron) 06X
2. Navy (Oxford Blue) 3KA

# KINVER

RMA405



2

**Size S-3XL**

- 240gsm 50% wool/50% polyester knit effect fleece
- Extol stretch side, hood and underarm panels
- Grown on hood
- 2 zipped lower pockets
- Stretch binding to hood opening, cuffs and hem



1. Black/Magnet 92B
2. Oxford Blue/Magnet X76
3. Burnt Salmon/Magnet 919

# KESTOR

RMA406



3

**Size S-3XL**

- 240gsm 50% wool/50% polyester knit effect fleece
- Extol stretch side and underarm panels
- 2 zipped lower pockets and 1 zipped sleeve pocket
- Stretch binding to collar, cuffs and hem



1. Prussian/Navy 91Q
2. Magnet/Black 699
3. Deep Teal/Magnet 92Q

# SHELTOR SHOWERPROOF FLEECE

RMA394



Size S-3XL

- 330gsm bonded polyester microfleece
- Waterproof and windproof membrane fabric
- 2 zipped lower pockets and 1 zipped chest pocket
- Stretch binding to collar, cuffs and hem



1. Black 800
2. Oxford Blue/Prussian 698
3. Cypress Green/Bayleaf 911



# CARTERSVILLE VI

RMA391



Size S-3XL

- 265gsm 100% polyester marl knit effect fleece
- Extol stretch side, hood and underarm panels
- Grown on hood
- 2 zipped lower pockets and 1 zipped chest pocket
- Stretch binding to hood opening, cuffs and hem



1. Navy/Navy 081
2. Cypress Green/Bayleaf 911
3. Oxford Blue/Prussian 698
4. Burnt Salmon/Deep Teal 696
5. Deep Teal/Magnet 92Q
6. Magnet/Magnet PW4



# COLLUMBUS VI

RMA393



Size S-3XL

- 265gsm 100% polyester marl knit effect fleece
- Extol stretch side and underarm panels
- 2 zipped lower pockets and 1 zipped sleeve pocket
- Stretch binding to collar, cuffs and hem



1. Magnet/Magnet PW4
2. Black/Black 826
3. Burnt Salmon/Magnet 919
4. Prussian/Navy 91Q
5. Bayleaf/Lime Green 94Z

# COLBECK

RMA396



Size S-3XL

- 270gsm two tone polyester fleece
- Synthetic Warmloft down-touch water repellent insulation
- Lightweight fill
- Durable water repellent finish to body
- 2 zipped lower pockets
- Stretch binding to cuffs



1. Magnet/Black 699
2. Bayleaf/Bayleaf VY3
3. Prussian/Navy 91Q

# LUZON II

RMA397



Size S-3XL

- 300gsm double side polyester mix wool effect fabric
- Grown on hood
- 2 zipped lower pockets
- Stretch binding to hood opening, cuffs and hem



1. Magnet 92E
2. Bayleaf 905
3. Prussian 56M

# VORRO

RMA395



Size S-3XL

- 100% polyester waffle fleece
- Grown on hood
- 2 zipped lower and 1 zipped chest pocket
- Reflective trim at chest pocket and hood
- Inner zip guard
- Stretch binding to cuffs



1. Deep Teal 8LM
2. Prussian 56M
3. Magnet 92E

# TORRENS

RMA351



Size S-3XL

- 235gsm 100% polyester two tone fleece
- 2 zipped lower pockets
- Stretch binding to collar, cuffs and hem



1. Black 800
2. Bayleaf 905
3. Deep Teal 8LM
4. Prussian 56M

# TAFTON

RMA306



Size S-3XL

- 225gsm honeycomb fleece
- Extol Stretch side panels
- 2 zipped lower pockets



1. Magnet/Deep Teal 94Q
2. Deep Teal/Magnet 92Q
3. Bayleaf/Cypress Green 92E
4. Prussian/Navy 91Q
5. Black/Magnet 92B

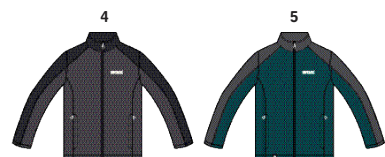
# HEDMAN II

RMA192



Size S-3XL

- 280gsm anti-pill Symmetry fleece
- 2 zipped lower pockets
- Adjustable shockcord hem



1. Black (Black) 808
2. Navy (Navy) 272
3. Oxford Blue/Navy 0L8
4. Iron/Black 6QQ
5. Deep Teal/Magnet 92Q

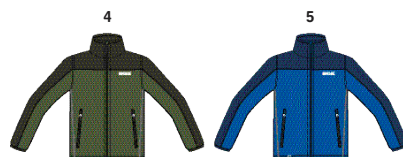
# STANTON II

RMA148



Size S-3XL

- 240gsm Symmetry fleece
- 1 side brushed, 1 side anti pill
- 2 zipped lower pockets
- Adjustable shockcord hem
- Stretch binding to cuffs and collar



1. Navy/Seal Grey 20
2. Seal Grey 038
3. Black/Seal Grey 28P
4. Cypress Green/Bayleaf 911
5. Oxford Blue/Prussian 698

# KENGER

RMA307



Size S-3XL

- 225gsm honeycomb fleece
- Zip neck



1. Magnet 92E
2. Burnt Salmon 8AK
3. Oxford Blue (Prussian) Z87
4. Bayleaf 905
5. Deep Teal 8LM

# MONTES

RMA212



**Size S-3XL**

- 140gsm mini stripe microfleece
- Half zip



1. Light Steel **82F**
2. Deep Teal **8LM**
3. Prussian **56M**
4. Burnt Salmon **8AK**
5. Magnet **92E**
6. Cypress Green **9QE**
7. Captains Blue **7DX**

# THOMPSON

RMA021



**Size S-3XL**

- 170gsm Symmetry fleece
- 1 side brushed, 1 side anti pill
- Zip neck



1. Black **800**
2. Oxford Blue (Navy) **05J**
3. Navy **540**
4. Iron **7NV**
5. Burnt Salmon **8AK**
6. Deep Teal **8LM**
7. Bayleaf (Bayleaf) **2G8**

# TOBIAS II B/W

RMB052



**Size S-3XL**

- 170gsm Symmetry fleece
- 1 side brushed, 1 side anti pill
- 2 lower pockets



1. Black (Black) **808**
2. Navy (Oxford Blue) **3KA**
3. Grape Leaf **68C**
4. Seal Grey **038**

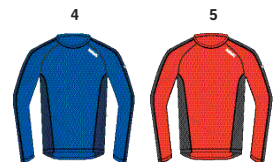
# BERU

RMU027



Size S-3XL

- Merino wool mix - 50% merino/50% polyester
- Super soft handle
- Natural odour control
- Good wicking performance



1. Magnet/Black **3DD**
2. Prussian/Navy **91Q**
3. Deep Teal/Magnet **92Q**
4. Oxford Blue/Prussian **698**
5. Burnt Salmon/Magnet **919**

# TORNELL

RMT183



Size S-3XL

- Merino wool mix - 50% merino/50% polyester
- Super soft handle
- Natural odour control
- Good wicking performance



1. Burnt Salmon/Deep Teal **696**
2. Lime Green/Cypress Green **N3Y**
3. Oxford Blue/Prussian **698**
4. Magnet/Black **699**

# ZIMBA

RMU034



Size S-3XL

- Merino wool mix - 50% merino/50% polyester
- Super soft handle
- Natural odour control
- Good wicking performance



1. Prussian **56M**
2. Magnet **92E**

# YONDER

RMT172



Size S-3XL

- Quick dry polyester grid fabric
- Good wicking performance
- Zip neck



- 1. Burnt Salmon 8AK
- 2. Oxford Blue (White) CV0
- 3. Deep Teal 8LM
- 4. Prussian 56M
- 5. Lime Green 7FJ
- 6. Black 800
- 7. Seal Grey (Burnt Salmon) ABS

# BECKLEY SET

RMU038



Size S-3XL

- 100% polyester
- Good wicking performance and anti-bac
- This is a set - Includes Top and Pant



1. Seal Grey 038



# MOUNTAIN TROUSERS

RMJ212



2

Size 30" - 44" (Size 33" also available)

- Isoflex - Active stretch fabric - 91% polyester, 9% elastane
- Durazone polyamide overlays at wear points for added strength and durability
- Durable water repellent finish
- Part-elasticated waist
- 2 zipped side pockets
- Articulated knee design for an enhanced range of movement
- Zip opening at ankle
- Elasticated gripper tape hem



- 1. Seal Grey/Black **087**
- 2. Prussian/Oxford Blue **2VI**
- 3. Magnet/Deep Teal **94Q**

# QUESTRA II TROUSERS

RMJ225



1

Size 30" - 44" (Size 33" also available)

- Woven stretch Softshell fabric
- Ripstop stretch fabric to knee and seat panels
- Durable water repellent finish
- Wind resistant
- Part-elasticated waist
- Multi pocketed - front and rear zipped pockets



- 1. Black/Black **826**
- 2. Prussian/Navy **91Q**
- 3. Deep Teal/Magnet **92Q**

# DAYHIKE STRETCH TROUSERS III

RMJ191



1

Size 30" - 44" (Size 33" also available)

- Waterproof and breathable Isotex 10000 stretch polyester fabric
- Breathability rating 10,000/m<sup>2</sup> /24hrs
- Durable water repellent finish
- Stretch polyester lining
- Taped seams
- Multi pocketed with front and rear zipped pockets
- Part-elasticated waist



- 1. Black **800**

# GEO SOFTSHELL TROUSERS II

RMJ117



**Size 30" - 44"** (Size 33" also available)

- Warm backed woven Softshell XPT fabric
- Breathability rating 10,000/m<sup>2</sup>/24hrs
- Wind resistant membrane fabric
- Durable water repellent finish
- Part-elasticated waist
- Multi pocketed with front and rear zipped pockets
- Available in Short, Regular and Long leg lengths



1. Black 800

# HIGHTON TROUSERS

RMJ216



**Size 30" - 44"** (Size 33" also available)

- Isoflex - Full Active stretch fabric - 92% polyamide, 8% elastane
- Durable water repellent finish
- UV Protection (UPF) of 40+
- Part-elasticated waist
- Multi pocketed with zipped side pockets
- Available in Short, Regular and Long leg lengths



1. Black 800  
2. Seal Grey 038  
3. Parchment 5BD

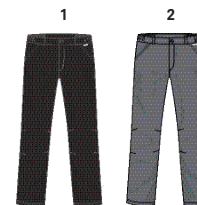
# FENTON TROUSERS

RMJ189



**Size 30" - 44"** (Size 33" also available)

- Warm backed Softshell fabric
- Durable water repellent finish
- Wind resistant
- Part-elasticated waist
- Multi pocketed
- Available in Short, Regular and Long leg lengths



1. Black 800  
2. Seal Grey 038

## CHANDLER OVERTROUSERS III

RMW244



2

**Size** 30" - 44" (Size 33" also available)

- Waterproof and breathable Isotex 5000 coated polyester fabric
- Breathability rating 5,000/m<sup>2</sup>/24hrs
- Durable water repellent finish
- Part mesh, part polyester lining
- Taped seams
- Elasticated and drawcord waist
- Zip opening at ankle
- Available in Short, Regular and Long leg lengths



1. Black 800
2. Navy 540

## ACTIVE PACKAWAY OVERTROUSERS II

MW310



1

**Size** 30" - 44" (Size 33" also available)

- Waterproof and breathable Isolite 5000 lightweight polyamide fabric
- Breathability rating 5,000/m<sup>2</sup> /24hrs
- Durable water repellent finish
- Taped seams
- 2 way, full length side zips
- 2 side pockets
- Packs away into packaway pocket bag



1. Black 800

MEN'S  
LIFESTYLE



# AALTO

RMP260



Size S-3XL

- Waterproof and breathable Isotex 10000 textured polyester fabric with polyester marl panels
- Breathability rating 10,000/m<sup>2</sup>/24hrs
- Taped seams
- Durable water repellent finish
- Synthetic Warmloft down-touch water repellent insulation
- Heavyweight fill
- Polyester taffeta lining
- Internal zipped security pocket
- Grown on hood with adjuster and removable faux fur trim
- Sherpa fur lining to hood
- Studded double stormflap and drain channel
- 2 way centre front zip
- 2 chest pockets
- Adjustable shockcord waist
- Internal stormcuffs
- Adjustable cuffs with snap fastening
- 2 lower patch pockets with handwarmer pockets behind
- Fishtail hem



- 1. Black 800
- 2. Navy 540
- 3. Bayleaf 905

# ERVING

RMP261



Size S-3XL

- Waterproof and breathable Isotex 5000 100% polyester marl peach fabric
- Breathability rating 5,000/m<sup>2</sup>/24hrs
- Taped seams
- Durable water repellent finish
- Thermo-Guard insulation
- Polyester taffeta lining
- Internal security pocket
- Concealed hood with adjusters
- Quilted panels to shoulder
- 2 chest pockets
- Zipped pocket to sleeve
- Adjustable cuffs
- Adjustable drawcord waist
- 2 lower patch pockets with handwarmer pockets behind
- Back vents with stud fastening



- 1. Black 800
- 2. Navy 540
- 3. Dark Khaki 41C

# RANIER

RMP267



1

**Size S-3XL**

- Waterproof and breathable Isotex 5000 peached polyester fabric
- Breathability rating 5,000/m<sup>2</sup>/24hrs
- Taped seams
- Durable water repellent finish
- Thermo-Guard insulation
- Polyester taffeta lining
- Internal security pocket
- Concealed hood with adjusters
- Cire inner baffle panel and hood
- 2 zipped chest pockets
- Adjustable cuffs
- Adjustable drawcord waist
- 2 lower patch pockets with handwarmer pockets behind
- Back vents with stud fastening



- 1. Black 800
- 2. Navy 540
- 3. Bayleaf 905

# SALINGER

RMP235



2

**Size S-5XL**

- Waterproof and breathable Isotex 5000 peached polyester fabric
- Breathability rating 5,000/m<sup>2</sup>/24hrs
- Taped seams
- Durable water repellent finish
- Thermo-Guard insulation
- Polyester taffeta lining with strategic quilt to back panel and hood
- Printed checked lining
- Internal zipped security pocket
- Grown on hood with adjuster and removable faux fur trim
- 2 way centre front zip
- Zipped pocket to sleeve
- Adjustable cuffs
- Internal stormcuffs
- 2 handwarmer pockets to chest
- Adjustable shockcord waist
- 2 lower patch pockets with handwarmer pockets behind



- 1. Black/Black 826
- 2. Blue Wing 68E
- 3. Burnt Umber 28R
- 4. Bayleaf 905

# RALSTON

RMP278



2

**Size S-3XL**

- Waterproof and breathable Isotex 5000 peached polyester fabric
- Breathability rating 5,000/m<sup>2</sup>/24hrs
- Taped seams
- Durable water repellent finish
- Polyester taffeta lining
- Internal security pocket
- Lightweight concealed hood with adjusters
- Sherpa fleece inner collar
- Adjustable cuffs with snap fastening
- 2 zipped lower pockets and 2 chest patch pockets
- Elasticated hem



- 1. Navy 540
- 2. Brown Tan 2GS
- 3. Classic Red 42D

# PHYLLON

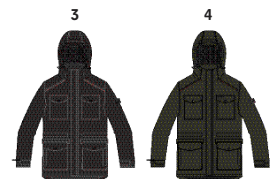
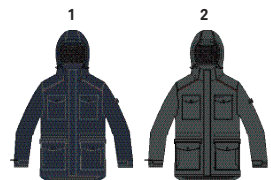
RMP264



1

Size S-3XL

- Waterproof Hydrafort peached polyester fabric
- Taped seams
- Durable water repellent finish
- Thermo-Guard insulation
- Polyester taffeta lining
- Internal zipped security pocket
- Detachable sherpa fur lined hood with adjusters
- 2 way centre front zip
- 2 chest patch pockets with snap fastenings
- Adjustable cuffs
- Adjustable shockcord waist
- 2 lower patch pockets with handwarmer pockets behind



1. Navy 540
2. Briar 8E1
3. Black 800
4. Bayleaf 905

# STERLINGS

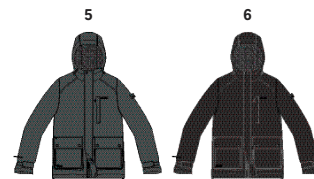
RMP265



4

Size S-5XL

- Waterproof Hydrafort polyester fabric
- Taped seams
- Durable water repellent finish
- Polyester lining with strategic sherpa fleece panel to body and hood
- Internal zipped security pocket
- Grown on hood with adjusters
- 1 zipped chest pocket
- Adjustable cuffs
- 2 lower patch pockets with handwarmer pockets behind
- Adjustable drawcord hem



1. Bayleaf 905
2. Blue Wing 68E
3. Burnt Umber 28R
4. Burgundy 173
5. Briar 8E1
6. Black 800

# HEBSON

RMP237



4

Size S-3XL

- Waterproof Hydrafort peached polyester fabric
- Taped seams
- Durable water repellent finish
- Thermo-Guard insulation
- Polyester taffeta lining
- Concealed hood with adjusters
- Internal zipped security pocket
- 2 lower patch pockets with handwarmer pockets behind
- Back vents with stud fastening



1. Black 800
2. Navy 540
3. Burgundy 173
4. Bayleaf 905
5. Brown Tan 2GS

# BOYER

RMW310



Size S-3XL

- Waterproof and breathable Isotex 5000 coated polyester fabric
- Breathability rating 5,000/m<sup>2</sup>/24hrs
- Taped seams
- Durable water repellent finish
- Part cotton chambray, part polyester taffeta lining
- Internal security pocket
- Adjustable cuffs
- Grown on hood with adjusters
- 2 zipped lower pockets



1. Bayleaf 905
2. Black 800
3. Blue Wing 68E

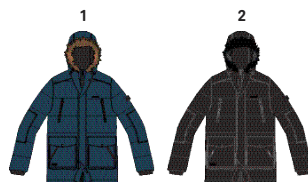
# ANGAROS II

RMN130



Size S-3XL

- Water resistant and breathable polyester microfibre
- Durable water repellent finish
- Duck Down Fill - 42% down/28% feather/30% polyester
- 600 fill power
- Size L - 350g fill weight
- Internal zipped security pocket
- Grown on hood with adjuster and removable faux fur trim
- 2 way centre front zip
- Inner zip guard
- 2 handwarmer pockets to chest
- Suedette Trim
- Adjustable shockcord waist
- Internal stormcuffs
- 2 lower patch pockets with handwarmer pockets behind



1. Blue Wing 68E
2. Black 800

# ARNAU

RMN132



Size S-3XL

- Wool look marl mini herringbone polyester fabric with water repellent coating
- Polyester micro poplin fabric with water repellent finish shoulder and pocket flap overlays
- Durable water repellent finish
- Thermo-Guard insulation
- Polyester taffeta lining
- Internal security pocket
- Grown on hood with adjusters
- 1 chest pocket
- 2 lower patch pockets with handwarmer pockets behind



1. Blue Wing/Navy 05F
2. Bayleaf/Bayleaf VY3



**IRWIN**  
RMN134



2

Size S-3XL

- 100% Nylon with water repellent and cire finish
- 280gsm 55% cotton/45% polyester brushed back fabric
- Durable water repellent finish
- Synthetic Warmloft down-touch water repellent insulation
- Grown on hood with stretch binding
- Extol stretch side and underarm panels
- Lycra bound cuffs
- 2 zipped lower pockets
- Adjustable shockcord hem



- 1. Black/Dust Marl **8M3**
- 2. Bayleaf **905**
- 3. Blue Wing **68E**

**LANDER**  
RMN133



4



Size S-3XL

- Quilted water repellent polyester micro poplin
- Durable water repellent finish
- Thermo-Guard insulation
- Polyester taffeta lining
- Suedette Trim
- 2 lower patch pockets with handwarmer pockets behind
- Back vents with stud fastening



- 1. Black **800**
- 2. Bayleaf **905**
- 3. Navy **540**
- 4. Brown Tan **2GS**

**LANDER B/W**  
RMB089



5



Size S-3XL

- Quilted water repellent polyester micro poplin
- Durable water repellent finish
- Thermo-Guard insulation
- Polyester taffeta lining
- Suedette Trim
- 2 lower patch pockets with handwarmer pockets behind
- Back vents with stud fastening



- 1. Black **800**
- 2. Navy **540**
- 3. Bayleaf **905**

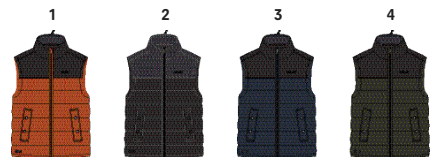
# HADLY B/W II

RMB088



**Size S-3XL**

- Quilted water repellent polyester micro poplin
- Durable water repellent finish
- Thermo-Guard insulation
- Polyester taffeta lining
- 2 lower welt pockets with branded snap fastening



1. Burnt Umber/Black **WR4**
2. Black/Black **826**
3. Navy/Black **58F**
4. Bayleaf/Black **3FF**

# RADBURN B/W

RMB079



**Size S-3XL**

- 440gsm sherpa backed polyester microfleece
- 2 zippered lower pockets
- Adjustable shockcord hem



1. Black **800**
2. Dark Khaki **41C**
3. Navy **540**

**CONLAN**

RML180

**Size S-3XL**

- Sherpa backed Softshell
- Highly windproof
- Chin guard
- Adjustable cuffs with snap fastening
- 2 zippered lower pockets
- Adjustable shockcord hem



1. Bayleaf (Black) **7EU**
2. Navy (Black) **3FG**
3. Black (Black) **808**

**CRONAN**

RML181

**Size S-3XL**

- Warm backed marl Softshell fabric
- Durable water repellent finish
- Wind resistant
- 2 zippered lower pockets
- Back vents with stud fastening



1. Bayleaf Marl **905**
2. Seal Grey Marl **038**
3. Navy Marl **540**

**WESTBROOK**

RMA372

**Size S-3XL**

- 510gsm 100% polyester knit effect hi pile bonded fleece
- Full dull classic grid polyamide ripstop fabric shoulder overlays and pockets
- Grown on hood with adjusters
- 1 zippered chest pocket
- 2 lower welt pockets with branded snap fastening



1. Black/Black **826**
2. Navy/Black **58F**
3. Bayleaf/Black **3FF**

# ZANE

RMA373



Size S-3XL

- 300gsm double side polyester mix wool effect fabric
- 280gsm 55% cotton / 45% polyester brushed back fabric
- 2 zipped lower pockets



1. Ash/Black **61G**
2. Magnet/Black **699**
3. Blue Wing/Black **179**

# PAAVO

RMA375



Size S-3XL

- 510gsm 100% polyester knit effect hi pile bonded fleece
- 2 zipped chest pockets
- 2 lower pockets
- Adjustable shockcord hem



1. Blue Wing (Black) **G58**
2. Briar (Black) **VDF**
3. Bayleaf (Black) **2G8**
4. Dust (Black) **02S**

# ZAVID

RMA398



Size S-3XL

- 250gsm 100% polyester marl knit effect fleece
- Quilted water repellent polyester micro poplin
- Durable water repellent finish
- Thermo-Guard insulation
- Stretch binding to cuffs and hem
- 2 zipped lower pockets



1. Black **800**
2. Navy **540**
3. Bayleaf **905**
4. Briar/Rock Grey **MY2**

# CRANSTON

RMA371



1

Size S-3XL

- 245gsm 100% polyester jacquard fleece
- Suedette shoulder overlays
- Suedette Trim
- 2 zipped lower pockets



- 1. Blue Wing 68E
- 2. Black 800

# GARRIAN

RMA333



4

Size S-5XL

- 440gsm sherpa backed polyester microfleece
- 2 zipped lower pockets
- Adjustable shockcord hem



- 1. Black (Briar) VDI
- 2. Bayleaf (Black) 7EU
- 3. Navy (Black) 3FG
- 4. Briar (Black) VDF
- 5. Brown Tan (Black) W4W

# CAYO

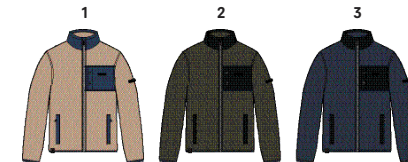
RMA389



5

Size S-3XL

- 350gsm 100% polyester high pile borg fleece
- Full dull classic grid polyamide ripstop fabric collar and pockets
- 1 chest pocket with 2 branded snap fastening
- Stretch binding to cuffs and hem
- 2 zipped lower pockets



- 1. Oat/Navy YID
- 2. Bayleaf/Black 3FF
- 3. Navy/Black 58F
- 4. Brown Tan/Black M87
- 5. Black/Black 826

# GERADO

RMA379



**Size S-3XL**

- 280gsm 100% polyester two tone knitted fabric
- Full dull classic grid polyamide ripstop fabric inner collar and elbow patches
- 2 zipped lower pockets



1. Navy 540
2. Bayleaf 905
3. Black 800

# BRANTON II

RMA377



**Size S-3XL**

- 250gsm 100% polyester marl knit effect fleece
- 2 lower pockets



1. Bayleaf 905
2. Navy 540
3. Dust 70M
4. Black 800
5. Burgundy 173

# CORMAC

RMA399



**Size S-3XL**

- 350gsm 100% polyester high pile borg fleece
- Full dull classic grid polyamide ripstop fabric collar and sleeve pocket
- Stretch binding to cuffs and hem



1. Oat/Navy Y1D
2. Blue Wing/Black J79
3. Black/Black 826
4. Brown Tan/Black M87

# LOCHRAN

RMA382



2

Size S-3XL

- 260gsm Herringbone effect jacquard fleece
- Buttoned neck opening
- Suedette Trim
- 1 chest pocket



1. Navy 540
2. Bayleaf 905
3. Burgundy 173
4. Black 800

# EARVIN

RMA378

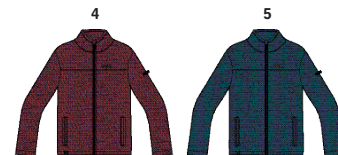


4



Size S-3XL

- 280gsm 100% polyester grid fleece
- 220gsm 100% polyester two colour broken stripe fleece
- Inner zip guard
- 2 lower pockets
- Adjustable shockcord hem



1. Navy Waffle 540
2. Bayleaf Waffle 905
3. Briar/Black Marl 21G
4. Burgundy/Black Marl Q2T
5. Blue Wing/Black Marl J79

# KALMAN

RMA390



4

Size S-3XL

- 220gsm 100% polyester two colour broken stripe fleece
- Grown on hood with wrap around cowl neck construction
- Cotton drawcord hood adjuster
- 2 lower pockets



1. Briar/Black 21G
2. Burgundy/Black Q2T
3. Rock Grey/Dust IKG
4. Bayleaf/Dark Khaki 474
5. Navy/Blue Wing 3GH
6. Captains Blue/Blue Wing E78

# ELGRID

RMA380



Size S-3XL

- 250gsm 100% polyester stripe fleece
- Zip neck



1. Burgundy 173
2. Navy 540
3. Briar 8E1
4. Bayleaf 905
5. Blue Wing 68E
6. Brown Tan 2GS

# TYGO

RMS130



Size S-3XL

- 100% Coolweave cotton
- 100% polyester fleece body lining
- Polyester taffeta lined sleeves
- 2 chest patch pockets with button down flaps
- 2 lower pockets



1. Green Pastures XY1
2. Captains Blue 7DX
3. Navy Check 540
4. Burgundy Check 173
5. Black Check 800



# LAZARE

RMS132



Size XS-3XL

- 100% Coolweave cotton
- 1 chest pocket



1. Bayleaf Check 905
2. Delhi Red Check 649
3. Navy Check 540
4. Captains Blue/Blue Wing Check E78
5. Briar/Black Check 21G
6. Burnt Umber/Black Check WR4





# TALCOTT II

RMT182



Size S-5XL

- 100% Coolweave cotton pique
- Ribbed collar and cuffs
- 3 button placket dyed to match buttons



- 1. Navy/Black 58F
- 2. Burgundy 173
- 3. Rock Grey Marl 68M
- 4. Bayleaf 905

# KIRO

RMT195



Size S-3XL

- 160gsm Coolweave Hybrid cotton/polyester single jersey
- V-neckline



- 1. Delhi Red 649
- 2. Blue Wing 68E
- 3. Briar 8EI
- 4. Black 800
- 5. White 900
- 6. Navy 540

# KARTER

RMT171



Size S-3XL

- 160gsm Coolweave Hybrid cotton/polyester single jersey



- 1. Briar 8EI
- 2. Blue Wing 68E
- 3. Bayleaf 905
- 4. Burgundy 173
- 5. Rock Grey 68M

# MEN'S DELPH LINED TROUSERS

RMJ182



2

**Size** 30" - 44" (Size 33" also available)

- 65% polyester/35% cotton peached fabric
- Durable water repellent finish
- Part-elasticated waist
- Multi pocketed
- Warm scrim lining
- Available in Short, Regular and Long leg lengths



1. Navy 540
2. Iron 7NV

# MEN'S DELPH TROUSERS

RMJ161



2

**Size** 30" - 44" (Size 33" also available)

- 65% polyester/35% cotton peached fabric
- Durable water repellent finish
- Part-elasticated waist
- Multi pocketed
- Available in Short, Regular and Long leg lengths



1. Iron 7NV
2. Nutmeg Cream 1NY
3. Navy 540

WOMEN'S  
ACTIVE



# CARLETTA IV 3-IN-1

RWP288



2



REFLECTIVE

Size 8-20

- Waterproof and breathable Isotex 10000 stretch lightweight ripstop polyester fabric
- Breathability rating 10,000/m<sup>2</sup>/24hrs
- Highly reflective printed stretch panels in strategic zones for enhanced visibility
- Durable water repellent finish
- Taped seams
- Grown on technical wire peaked hood with adjusters
- Hi-tech water repellent centre front zip with inner zip and chin guard
- Chest pocket with hi-tech water repellent zip
- 2 zipped lower pockets
- Articulated sleeves for enhanced range of movement
- Adjustable cuffs
- Adjustable shockcord hem

**Inner**

- Extol comfort stretch fabric
- Stretch binding to collar, cuffs and hem



1. Duchess/Beetroot/Beetroot Reflective (Beetroot) 2HE
2. Atlantic Blue/Petrol Blue/Petrol Blue Reflective (Petrol Blue) 5ZL
3. Rock Grey/Magnet/Magnet Reflective (Magnet) K97

# LOUISIANA V 3-IN-1

RWP289



2



Size 8-20

- Waterproof and breathable Isotex 15000 100% polyester stretch fabric
- Breathability rating 10,000/m<sup>2</sup>/24hrs
- Durable water repellent finish
- Taped seams
- Detachable technical wired peaked hood with adjusters
- 2-way underarm ventilation zippers
- Inner zip guard
- 2 lower pockets with hi-tech water repellent zips
- Inner zipped security pocket
- Articulated sleeves for enhanced range of movement
- Adjustable cuffs
- Adjustable shockcord hem

**Inner**

- Warm backed Softshell fabric
- Durable water repellent finish
- 2 zipped lower pockets
- Stretch binding to cuffs and hem



1. Navy/Prussian) P78
2. Magnet (Magnet) PN4

# WOMEN'S WENTWOOD IV 3-IN-1

RWP290



Size 8-20

- Waterproof and breathable Isotex 15000 100% polyester stretch fabric
  - Breathability rating 10,000/m<sup>2</sup>/24hrs
  - Durable water repellent finish
  - Taped seams
  - Grown on technical hood with 2 way adjustment and reinforced peak for enhanced fit and protection
  - Inner stormflap with chin guard
  - Articulated sleeves for enhanced range of movement
  - 2 lower pockets with hi-tech water repellent zips
  - Internal map pocket
  - Adjustable cuffs
  - Adjustable shockcord hem
- Inner**
- 220gsm fleece side panels and arms
  - Thermo-Guard insulation
  - 2 zipped lower pockets
  - Stretch binding to collar, cuffs and hem



1. Petrol Blue (Petrol Blue) **GQ1**
2. Beetroot/Duchess (Duchess) **G3R**
3. Rock Grey/Magnet (Magnet) **K97**

# CALYN III 3-IN-1

RWP291



Size 8-20

- Waterproof and breathable Isotex 10000 100% polyester stretch fabric
  - Breathability rating 8,000/m<sup>2</sup>/24hrs
  - Durable water repellent finish
  - Taped seams
  - Concealed hood with adjusters
  - 2 zipped lower pockets and 1 zipped chest pocket
  - Adjustable cuffs
  - Adjustable shockcord hem
- Inner**
- 145gsm marl fleece
  - 2 lower pockets



1. Black (Black) **808**
2. Navy (Prussian) **P78**
3. Beetroot (Duchess) **ICA**

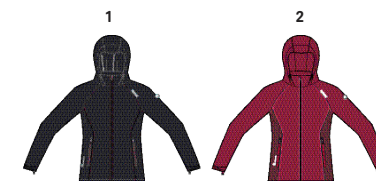
# PREMILLA II 3-IN-1

RWP278



Size 8-20

- Waterproof Hydrafort peached polyester fabric
  - Durable water repellent finish
  - Taped seams
  - Polyester taffeta lined
  - Concealed hood with adjusters
  - 2 zipped lower pockets
  - Adjustable cuffs
  - Adjustable shockcord hem
- Inner**
- 140gsm mini stripe microfleece
  - 2 lower pockets



1. Black/Black (Fig) **3MW**
2. Beetroot/Burgundy (Beetroot) **NLL**
3. Prussian/Navy (Prussian) **91Q**

# WOMEN'S HIGHSIDE IV

RWP293



Size 8-20

- Waterproof and breathable Isotex 10000 textured polyester fabric
- Breathability rating 10,000/m<sup>2</sup>/24hrs
- Durable water repellent finish
- Taped seams
- Thermo-Guard insulation
- Detachable technical hood with adjusters
- 2 lower pockets with hi-tech water repellent zips
- Inner zipped security pocket
- Articulated sleeves for enhanced range of movement
- Adjustable cuffs
- Adjustable shockcord hem



1. Magnet 92E
2. Petrol Blue 08L
3. Navy 540

# CORVELLE II

RWP294



Size 8-20

- Waterproof and breathable Isotex 10000 100% polyester stretch fabric
- Breathability rating 10,000/m<sup>2</sup>/24hrs
- Thermo-Guard insulation
- Taped seams
- Grown on technical hood with adjusters
- 2 zipped lower pockets
- Internal map pocket
- Adjustable cuffs
- Adjustable shockcord hem



1. Petrol Blue/Atlantic Blue 50Q
2. Beetroot/Duchess G3R
3. Black/Black 826
4. Navy/Prussian 53S

# BLANCHET II

RWP245



**Size 8-26**

- Waterproof Hydrafort polyester fabric
- Durable water repellent finish
- Taped seams
- Thermo-Guard insulation
- Polyester taffeta lining
- Concealed hood with adjusters
- 2 zipped lower pockets
- Adjustable cuffs
- Adjustable shockcord hem



- 1. Navy 540
- 2. Shoreline Blue 1L2
- 3. Beetroot 47W

# WOMEN'S TARREN

RWP279



**Size 8-20**

- Waterproof and breathable Isotex 5000 coated polyamide fabric
- Durable water repellent finish
- Taped seams
- Fleece lining to body and hood
- Grown on hood
- 2 zipped lower pockets
- Stretch binding to cuffs and hem



- 1. Navy 540
- 2. Beetroot 47W
- 3. Petrol Blue 08L

# WOMEN'S BIRCHDALE

## RWW300



3

### Size 8-20

- Waterproof and breathable Isotex 10000 100% polyester stretch fabric
- Breathability rating 10,000/m<sup>2</sup> /24hrs
- Durable water repellent finish
- Taped seams
- Grown on technical hood with adjusters
- Articulated sleeves for enhanced range of movement
- Hi-tech water repellent centre front zip with inner zip and chin guard
- 2 zipped lower and 1 zipped chest pocket
- Internal map pocket
- Adjustable cuffs
- Adjustable shockcord hem



1. Dark Cerise/Beetroot 2SN
2. Seal Grey Black 087
3. Petrol Blue/Atlantic Blue 50Q

# WOMEN'S CALDERDALE III

## RWW326



4

### Size 8-20

- Waterproof and breathable Isotex 5000 coated polyester fabric
- Breathability rating 5,000/m<sup>2</sup> /24hrs
- Durable water repellent finish
- Taped seams
- Part mesh part polyester taffeta lining
- Concealed hood with adjusters
- 2 zipped lower and 2 zipped chest pockets
- Adjustable cuffs
- Adjustable shockcord hem



1. Dark Cerise/Beetroot 2SN
2. Prussian/Navy 91Q
3. Light Steel/Atlantic Blue VDD
4. Magnet/Black 699



# DAYSHA

RWW271



3

## Size 8-20

- Waterproof Hydrafort peached polyester fabric
- Durable water repellent finish
- Taped seams
- Polyester mesh lining
- Concealed hood with adjusters
- 2 lower zipped pockets
- Inner security pocket
- Adjustable shockcord hem



1. Navy 540
2. Beetroot/Burgundy NLL
3. Shoreline Blue/Deep Teal FY3

# CORINNE IV

RWW304



3

## Size 8-20

- Waterproof and breathable Isolite lightweight polyamide fabric
- Breathability rating 5,000/m<sup>2</sup>/24hrs
- Durable water repellent finish
- Taped seams
- Mesh lined
- Concealed hood with adjusters
- Reflective trim
- 2 zipped lower pockets
- Adjustable shockcord hem
- Packaway - lower left side pocket converts into belt bag



1. Clematis Blue 19E
2. Ceramic 770
3. Dark Cerise 9A8
4. Black 800
5. Midnight 201

# WOMEN'S PACK-IT JACKET III

RWW305



### Size 8-20

- Waterproof and breathable Isolite 5000 lightweight polyamide fabric
- Breathability rating 5,000/m<sup>2</sup> /24hrs
- Durable water repellent finish
- Taped seams
- Unlined
- Adjustable shockcord hood
- 2 lower pockets with hook and loop fastening
- Packs away into stuff sack



1. Dark Cerise 9A8
2. Ceramic 770
3. Blueberry Pie 48V
4. Midnight 20I
5. Black 800

# WOMEN'S PACK-IT OVERTROUSERS

RWW158



### Size S-XL

- Waterproof and breathable Isolite 5000 lightweight polyamide fabric
- Breathability rating 5,000/m<sup>2</sup> /24hrs
- Durable water repellent finish
- Taped seams
- Elasticated waist
- 2 side pocket openings
- Packs away into stuff sack



1. Midnight 20I
2. Black 800

# WOMEN'S HALTON III

RWN146



Size 8-20

- Lightweight 20d polyamide fabric
- Highly reflective printed stretch panels in strategic zones for enhanced visibility
- Durable water repellent finish
- Lightweight Alpaca wool blend insulation to keep you warm even when wet
- Inner stormflap with chin guard
- 2 zipped lower pockets
- Stretch binding to collar



1. Duchess/Beetroot/Beetroot Reflective 2HE
2. Petrol Blue/Atlantic Blue/Atlantic Blue Reflective 50Q
3. Navy/Prussian/Prussian Reflective 53S
4. Magnet/Magnet/Magnet Reflective PW4

# WOMEN'S HALTON B/W II HYBRID

RWB092



Size 8-20

- Lightweight 20d polyamide fabric
- Highly reflective printed panels in strategic zones for enhanced visibility
- Durable water repellent finish
- Lightweight Alpaca wool blend insulation to keep you warm even when wet
- Extol stretch inserts
- Inner zip guard
- 2 zipped lower pockets
- Stretch binding to armholes, hem and collar



1. Black/Black/Black Reflective 826
2. Petrol Blue/Atlantic Blue/Atlantic Blue Reflective 50Q

# WOMEN'S WHITEHILL

RWN136



Size 8-20

- Lightweight 20d polyamide fabric
- Durable water repellent finish
- Premium duck down fill - 90% Down/ 10% Feathers
- 600 fill power
- Easily compressible
- Lightweight fill
- Inner zip guard
- 2 zipped lower pockets
- Stretch binding to cuffs and hem
- Packs away into inner pouch



1. Fiery Coral 2CC
2. Black 800
3. Petrol Blue 08L
4. Duchess 5BG

# ANDEL

RWN148



Size 8-20

- Lightweight 20d polyamide fabric
- Durable water repellent finish
- Ultra warm and super soft Atomlight insulation
- Lightweight fill
- Grown on hood with adjusters
- Inner zip guard
- 2 zipped lower pockets



1. Black 800
2. Prussian 56M
3. Beetroot 47W



# METALLIA II

RWN149



Size 8-20

- Lightweight 20d polyamide fabric
- Durable water repellent finish
- Ultra warm and super soft Atomlight insulation
- Lightweight fill
- Inner zip guard
- 2 zipped lower pockets



1. Prussian 56M
2. Black 800
3. Beetroot 47W
4. Petrol Blue 08L
5. White Animal Print 900
6. Magnet Fur Print 92E

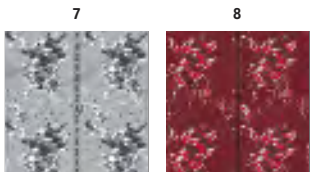
# WOMEN'S FREEZEWAY

RWN151



Size 8-20

- Lightweight 20d polyamide fabric
- Durable water repellent finish
- Synthetic Warmloft down-touch water repellent insulation
- Medium weight fill
- Inner zip guard
- 2 zipped lower pockets
- Elasticated cuffs and hem



1. Duchess **58G**
2. White **900**
3. Prussian **56M**
4. Black **800**
5. Shoreline Blue **1L2**
6. Petrol Blue **08L**
7. Printed Magnet Explosion Floral **93I**
8. Printed Delhi Red Explosion Floral **649**

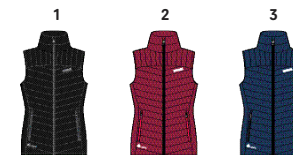
# WOMEN'S FREEZEWAY B/W

RWB095



Size 8-20

- Lightweight 20d polyamide fabric
- Durable water repellent finish
- Synthetic Warmloft down-touch water repellent insulation
- Medium weight fill
- Inner zip guard
- 2 zipped lower pockets



1. Black **800**
2. Beetroot **47W**
3. Prussian **56M**

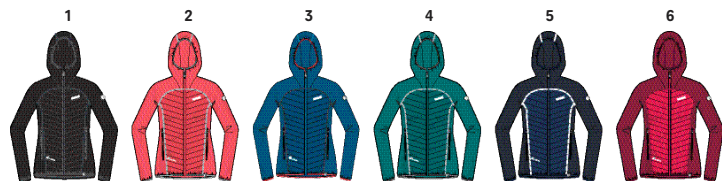
# WOMEN'S ANDRESON IV HYBRID

RWN134



Size 8-20

- Extol Stretch hood, sleeves and side panels for fit and freedom of movement
- Synthetic Warmloft down-touch water repellent insulation
- Durable water repellent finish to body
- Easily compressible
- Lightweight fill
- Inner zip guard
- 2 zipped lower pockets
- Stretch binding to hood opening, cuffs and hem



- 1. Black/Black 826
- 2. Fiery Coral/Fiery Coral S99
- 3. Petrol Blue/Petrol Blue Z98
- 4. Shoreline Blue/Shoreline Blue ZV0
- 5. Navy/Prussian 53S
- 6. Beetroot/Duchess G3R

# WOMEN'S BESTLA HYBRID

RWN135



Size 8-20

- Extol Stretch sleeves and side panels for fit and freedom of movement
- Synthetic Warmloft down-touch water repellent insulation
- Durable water repellent finish to body
- Easily compressible
- Lightweight fill
- Inner zip guard
- 2 zipped lower pockets
- Stretch binding to collar, cuffs and hem



- 1. Seal Grey/Rock Grey 4T0
- 2. Petrol Blue/Atlantic Blue 50Q
- 3. Beetroot/Beetroot 9VR
- 4. Navy/Navy 081

# WOMEN'S HENTANA

RWL176



Size 8-20

- Extol - 50% wool/50% polyester
- 2 zipped lower pockets
- Stretch binding to collar, cuffs and hem



1. Beetroot 47W
2. Petrol Blue 08L

# DESOTO V

RWL178



REFLECTIVE

Size 8-20

- Warm backed woven Softshell XPT fabric
- Breathability rating 10,000/m<sup>2</sup>/24hrs
- Highly reflective printed panels in strategic zones for enhanced visibility
- Durable water repellent finish
- Wind resistant membrane fabric
- Detachable technical hood with adjusters
- Inner zip guard
- 2-way underarm ventilation zippers
- 2 zipped lower pockets
- Adjustable cuffs
- Adjustable shockcord hem



1. Magnet/Magnet Reflective (Magnet) PW4
2. Duchess/Beetroot Reflective (Beetroot) 2HE
3. Petrol Blue/Atlantic Blue Reflective (Atlantic Blue) 50Q
4. Navy/Prussian Reflective (Prussian) 53S

# WOMEN'S CARPO HYBRID

RWL160

SOFTSHELL



Size 8-20

- Isoflex - Active stretch fabric - 92% polyester, 8% elastane
- Wool mix panels to the body
- Wind resistant
- Grown on hood
- 2 zipped lower pockets
- Stretch binding to hood opening, cuffs and hem



1. Magnet/Magnet/Rock Grey PW4
2. Duchess/Magnet/Beetroot FBK
3. Petrol Blue/Magnet/Rock Grey UT2

SOFTSHELL

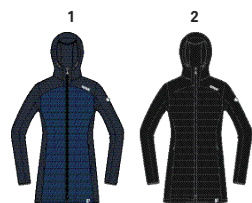
# HAWNBY

RWL184



Size 8-20

- Marl polyester Softshell
- Polyamide overlays with durable water repellent finish
- Wind resistant
- Longer length
- Grown on hood with adjusters
- 2 way centre front zip
- 2 zipped lower pockets
- Adjustable shockcord hem



1. Navy/Prussian 53S
2. Black/Black 826

# WOMEN'S HASKA HYBRID

RWL180



Size 8-20

- Marl polyester Softshell
- Polyamide overlays with durable water repellent finish
- Extol stretch side and underarm panels
- Wind resistant
- Grown on hood
- 2 zipped lower pockets
- Stretch binding to hood face, cuffs and hem



1. Magnet/Magnet/Magnet PW4
2. Beetroot/Beetroot/Beetroot 9VR
3. Petrol Blue/Petrol Blue/Petrol Blue Z98

# CINLEY HYBRID

RWL183



Size 8-20

- Marl polyester Softshell
- Extol stretch side and underarm panels
- Wind resistant
- Stretch binding to cuffs and hem
- 2 zipped lower pockets



1. Beetroot/Beetroot 9VR
2. Magnet/Magnet PW4
3. Petrol Blue/Atlantic Blue 50Q



# NIOSA

RWL181



Size 8-20

- Polyester/cotton stretch fabric
- Inner zip guard
- 2 zipped lower pockets
- Stretch binding to neck and cuffs



1. Navy 540
2. Magnet 92E
3. Beetroot 47W

# WOMEN'S YARE

RWL166



Size 8-20

- Extol warm backed knitted stretch fabric
- 2 zipped lower pockets
- Thumb loops
- Stretch binding to collar, cuffs and hem



1. Seal Grey/Rock Grey/Seal Grey 4T0
2. Petrol Blue/Atlantic Blue/Seal Grey 50Q
3. Fiery Coral/Rock Grey/Seal Grey 596
4. Prussian/Navy/Prussian 91Q
5. Duchess/Beetroot/Seal Grey 2HE

# WOMEN'S AREC II

RWL154



Size 8-20

- Warm backed woven stretch Softshell fabric
- Durable water repellent finish
- Wind resistant
- Grown on hood
- 2 zipped lower pockets
- Stretch binding to hood and cuffs



1. Black (Light Steel) 34Q
2. Petrol Blue (Light Steel) W58
3. Duchess/Beetroot (Light Steel) 2HE

# WOMEN'S CARBY

RWL172



Size 8-20

- Warm backed marl Softshell fabric
- Durable water repellent finish
- Wind resistant
- 2 zipped lower pockets
- Adjustable shockcord hem



1. Enamel 41D
2. Dark Cerise 9A8
3. Seal Grey 038

# CONNIE III

RWL104



Size 8-26

- Warm backed Softshell fabric
- Durable water repellent finish
- Wind resistant
- 2 zipped lower pockets
- Adjustable shockcord hem



1. Navy (Navy) 272
2. Black (Blackcurrant) 7E2
3. Polar Bear (Parchment) 1QA
4. Beetroot (Dark Cerise) 2GT
5. Petrol Blue (Atlantic Blue) S98
6. Light Steel (Light Steel) T3T

# WOMEN'S KINVER

RWA424



Size 8-20

- 240gsm 50% wool/50% polyester knit effect fleece
- Extol stretch side, hood and underarm panels
- Grown on hood
- 2 zipped lower pockets
- Stretch binding to hood opening, cuffs and hem



1. Petrol Blue/Petrol Blue 220
2. Black/Magnet 92B
3. Fiery Coral/Rock Grey S96

# WOMEN'S KESTOR

RWA425



Size 8-20

- 240gsm 50% wool/50% polyester knit effect fleece
- Extol stretch side and underarm panels
- 2 zipped lower pockets
- Stretch binding to collar, cuffs and hem



1. Navy/Navy **081**
2. Magnet/Magnet **PW4**
3. Beetroot/Duchess **G3R**

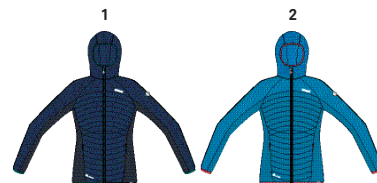
# PEMBLE HYBRID

RWA406



Size 8-20

- 300gsm polyester/acrylic/rayon fleece fabric
- Extol stretch side and underarm panels
- Durable water repellent finish to body
- Synthetic Warmloft down-touch water repellent insulation
- Lightweight fill
- Grown on hood
- 2 zipped lower pockets
- Stretch binding to hood opening, cuffs and hem



1. Prussian/Prussian/Navy **R68**
2. Atlantic Blue/Atlantic Blue/  
Atlantic Blue **V2V**
3. Magnet/Magnet/Magnet **PW4**
4. Beetroot/Duchess/Beetroot **G3R**

# WILLOWBROOK VI

RWA405



Size 8-20

- 265gsm 100% polyester marl knit effect fleece
- Extol stretch side, hood and underarm panels
- Grown on hood
- 2 zipped lower pockets
- Stretch binding to hood opening, cuffs and hem



1. Petrol Blue/Petrol Blue **Z98**
2. Duchess/Beetroot **2HE**
3. Prussian/Navy **91Q**
4. Magnet/Magnet **PW4**

# LANEY VI

RWA407



Size 8-20

- 265gsm 100% polyester marl knit effect fleece
- Extol stretch side and underarm panels
- 2 zipped lower pockets and 1 zipped chest pocket
- Stretch binding to collar, cuffs and hem



1. Black/Black **826**
2. Navy/Navy **081**
3. Petrol Blue/Petrol Blue **220**
4. Fiery Coral/Rock Grey **S96**
5. Beetroot/Beetroot **9VR**
6. Duchess/Duchess **9GP**

# WOMEN'S TORRENS

RWA362



Size 8-20

- 235gsm 100% polyester two tone fleece
- 2 zipped lower pockets
- Stretch binding to collar, cuffs and hem



1. Navy **540**
2. Magnet **92E**
3. Beetroot **47W**

# WOMEN'S TAFTON

RWA317



Size 8-20

- 225gsm honeycomb fleece
- Extol Stretch side panels
- 2 zipped lower pockets



1. Prussian/Prussian **R68**
2. Atlantic Blue/Atlantic Blue **V2V**
3. Shoreline Blue/Shoreline Blue **ZV0**
4. Duchess/Beetroot **2HE**

# FLOREO II

RWA183



Size 8-20

- 240gsm Symmetry fleece
- 1 side brushed, 1 side anti pill
- Stretch binding to cuffs and collar
- 2 zipped lower pockets
- Adjustable shockcord hem



- 1. Navy 540
- 2. Beetroot 47W
- 3. Ash 611
- 4. Shoreline Blue 1L2
- 5. Petrol Blue 08L

# HALIA

RWA409



Size 8-20

- Velour fabric - 94% polyester/6% elastane
- Grown on hood with adjusters
- 2 concealed lower zip pockets
- Stretch binding at cuffs and hood face



- 1. Prussian 56M
- 2. Black 800
- 3. Beetroot 47W

# WOMEN'S KENGER

RWA318



Size 8-20

- 225gsm honeycomb fleece
- Zip neck



- 1. Navy (Prussian) P78
- 2. Magnet 92E
- 3. Beetroot 47W
- 4. Duchess (White) 7TU
- 5. Petrol Blue 08L
- 6. Shoreline Blue 1L2

# WOMEN'S MONTES

RWA240



3

Size 8-20

- 140gsm mini stripe microfleece
- Half zip



1. Dark Light Steel 4G2
2. Navy (White Stripe) 7TT
3. Petrol Blue 08L
4. Dark Cerise 9A8
5. Polar Bear 8PT
6. Fiery Coral 2CC
7. Vivid Viola (Winberry Stripe) ABQ

# SWEETHART

RWA027



8

Size 8-20

- 170gsm Symmetry fleece
- 1 side brushed, 1 side anti pill



1. Black (Blackcurrant) 7E2
2. Navy 540
3. Polar Bear (Parchment) 1QA
4. Dark Cerise 9A8
5. Beetroot 47W
6. Shoreline Blue 1L2
7. Petrol Blue (Petrol Blue) GQ1
8. Fiery Coral 2CC

# SWEETNESS II B/W

RWB053



4

Size 8-20

- 170gsm Symmetry fleece
- 1 side brushed, 1 side anti pill



1. Navy (Polar Bear) 3EA
2. Dark Cerise(Duchess) 2SX
3. Black (Blackcurrant) 7E2
4. Light Steel 82F

# WOMEN'S BERU

RWU027



Size 8-20

- Merino wool mix - 50% merino/50% polyester
- Super soft handle
- Natural odour control
- Good wicking performance



1. Magnet/Rock Grey 158
2. Duchess/Beetroot 2HE
3. Navy/Magnet ZY1
4. Petrol Blue/Magnet UT2

# WOMEN'S TORNELL

RWT172



Size 8-20

- Merino wool mix - 50% merino/50% polyester
- Super soft handle
- Natural odour control
- Good wicking performance



1. Duchess 5BG
2. Petrol Blue 08L
3. Magnet 92E

# WOMEN'S ZIMBA

RWU031



Size 8-20

- Merino wool mix - 50% merino/50% polyester
- Super soft handle
- Natural odour control
- Good wicking performance



1. Petrol Blue 08L
2. Magnet 92E

# WOMEN'S YONDER

RWT161



Size 8-20

- Quick dry polyester grid fabric
- Good wicking performance
- Zip neck



- 1. Navy 540
- 2. Duchess 5BG
- 3. Seal Grey (Black) 1QJ
- 4. Fiery Coral 2CC
- 5. Petrol Blue 08L

# WOMEN'S BECKLEY SET

RWU035



Size 8-20

- 100% polyester
- Good wicking performance and anti-bacterial
- This is a set - includes top and pant





# WOMEN'S MOUNTAIN TROUSERS



RWJ207



2

Size 8-20

- Isoflex - Active stretch fabric - 91% polyester, 9% elastane
- Durazone polyamide overlays at wear points for added strength and durability
- Durable water repellent finish
- Part-elasticated waist
- 2 zipped side pockets
- Articulated knee design for an enhanced range of movement
- Zip opening at ankle
- Elasticated gripper tape hem



- 1. Seal Grey/Black/Seal Grey **5VR**
- 2. Beetroot/Duchess/Magnet **G3R**
- 3. Atlantic Blue/Fiery Coral/Petrol Blue **P66**

# WOMEN'S QUESTRA II



RWJ215



1

Size 8-20

- Woven stretch Softshell fabric
- Ripstop stretch fabric to knee panels
- Durable water repellent finish
- Wind resistant
- Part-elasticated waist
- Multi zipped pockets to the front



- 1. Black/Black **826**
- 2. Prussian/Navy **91Q**
- 3. Beetroot/Magnet **ZV1**

# WOMEN'S DAYHIKE STRETCH TROUSERS III



RWJ181



1

Size 8-20

- Waterproof and breathable Isotex 10000 stretch polyester fabric
- Breathability rating 10,000/m<sup>2</sup>/24hrs
- Durable water repellent finish
- Stretch polyester lining
- Taped seams
- Multi pocketed with front and rear zipped pockets
- Part-elasticated waist



- 1. Black **800**

# WOMEN'S GEO SOFTSHELL TROUSERS II

RWJ113



**Size 8-20**

- Warm backed woven Softshell XPT fabric
- Breathability rating 10,000/m<sup>2</sup>/24hrs
- Wind resistant membrane fabric
- Durable water repellent finish
- Part-elasticated waist
- Multi pocketed with front and rear zipped pockets
- Available in Short, Regular and Long leg lengths



1. Black **800**

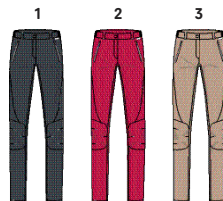
# WOMEN'S HIGHTON TROUSERS

RWJ217



**Size 8-20**

- Isoflex - Full Active stretch fabric - 92% polyamide, 8% elastane
- Durable water repellent finish
- UV Protection (UPF) of 40+
- Part-elasticated waist
- Multi pocketed with zipped side pockets
- Available in Short, Regular and Long leg lengths



1. Seal Grey **038**  
2. Dark Cerise **9A8**  
3. Moccasin **0GE**

# PENTRE STRETCH TROUSERS

RWJ193



**Size 8-20**

- Isoflex - Active stretch fabric - 89% polyester, 11% elastane
- Durable water repellent finish
- Part-elasticated waist
- 2 zipped side pockets
- Available in Short, Regular and Long leg lengths



1. Navy **540**  
2. Black **800**

# WOMEN'S FENTON TROUSERS

RWJ177



## Size 8-20

- Warm backed Softshell fabric
- Durable water repellent finish
- Wind resistant
- Part-elasticated waist
- Multi pocketed
- Available in Short, Regular and Long leg lengths



1. Black 800
2. Navy 540
3. Rock Grey 68M

# AMELIE OVERTROUSERS III

RWW264



## Size S-XL

- Waterproof and breathable Isotex 5000 coated polyester fabric
- Breathability rating 5,000/m<sup>2</sup> /24hrs
- Durable water repellent finish
- Part mesh, part polyester lining
- Taped seams
- Elasticated and drawcord waist
- Zip opening at ankle
- Available in Short and Regular leg lengths



1. Black 800
2. Navy 540

# WOMEN'S LIFESTYLE



# VOLTERA

RWP292



Size 8-20

- Waterproof and breathable polyester Isotex 5000 coated taslan fabric
- Breathability rating 5,000/m<sup>2</sup>/24hrs
- Taped seams
- Durable water repellent finish
- Thermo-Guard insulation
- Internal security pocket
- Luxurious faux fur lining to hood, cuffs and facings
- Polyester taffeta lining
- Grown on hood with shockcord adjustment system
- 2 way centre front zip
- 2 lower pockets with flaps and branded snap fastening



1. Magnet 92E  
2. Navy 540



Waterproof and Breathable



Machine Washable



Lightly Insulated



3 Temperature Settings



Over 6 hours Continuous Heat



Power Bank Battery Operated\*

### RBE001 - HEATED JACKET BATTERY PACK



\*Sold separately

### Heated Technology

- Active battery powered heating system
- 2 heated chest panels and 1 heated back panel
- Easy on/off button
- 3 temperature settings
- Safety cut off

# SAFIYYA

RWP280



Size 8-20

- Waterproof and breathable Isotex 10000 100% polyester twill fabric
- Breathability rating 10,000/m<sup>2</sup>/24hrs
- Taped seams
- Durable water repellent finish
- Synthetic Warmloft down-touch water repellent insulation
- Heavyweight fill
- Polyester taffeta lining with strategic quilt to back panel and hood
- Internal security pocket
- Detachable hood with adjuster and removable faux fur trim
- 2 way centre front zip
- 2 zipped chest pockets
- Adjustable drawcord waist
- Internal stormcuffs
- 2 lower patch pockets with handwarmer pockets behind



1. Black 800  
2. Dark Khaki 41C  
3. Navy 540  
4. Prune 8PZ



# LIZBETH

RWP282



Size 8-20

- Waterproof and breathable Isotex 8000 wool effect fabric
- Breathability rating 10,000/m<sup>2</sup>/24hrs
- Taped seams
- Durable water repellent finish
- Thermo-Guard insulation
- Polyester taffeta lining
- Strategic houndstooth patchwork printed lining to back panel
- Internal security pocket
- Concealed hood with adjusters
- Luxury fur to inner collar
- Leatherette trim detail
- 2 chest patch pockets and 2 lower patch pockets with side handwarmer pockets
- Adjustable drawcord waist
- Back vents with stud fastening



1. Dark Khaki 41C
2. Navy 540
3. Black 800

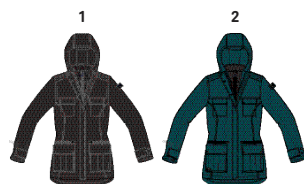
# FROSTINE

RWP287



Size 8-20

- Waterproof and breathable Isotex 5000 coated polyester twill fabric
- Breathability rating 5,000/m<sup>2</sup>/24hrs
- Taped seams
- Durable water repellent finish
- Thermo-Guard insulation
- Polyester taffeta lining
- Internal security pocket
- Grown on hood with adjusters
- Cire inner baffle panel with stand collar
- Adjustable cuffs
- 2 chest patch pockets with snap fastenings
- 2 lower patch pockets with handwarmer pockets behind



1. Black/Black 826
2. Deep Teal/Black TAA
3. Blue Opal/Navy HY4

# LEXIA

RWP281



Size 8-26

- Waterproof and breathable Isotex 5000 coated polyester high shine twill fabric
- Breathability rating 8,000/m<sup>2</sup>/24hrs
- Taped seams
- Durable water repellent finish
- Thermo-Guard insulation
- Polyester taffeta lining
- Internal security pocket
- Grown on hood with adjuster and removable faux fur trim
- 2 way centre front zip
- Adjustable cuffs with snap fastening
- Adjustable shockcord waist
- 2 zipped lower pockets
- 2 lower pockets with flaps and branded snap fastening
- Fishtail hem



1. Blue Opal B56
2. Dark Khaki 41C
3. Prune 8PZ
4. Deep Teal 8LM
5. Black 800

# BRAELYNN

RWP284



3



**Size 8-20**

- Waterproof and breathable Isotex 5000 coated polyester fabric
- Breathability rating 5,000/m<sup>2</sup>/24hrs
- Taped seams
- Durable water repellent finish
- Thermo-Guard insulation
- Polyester taffeta lining with strategic quilt to back panel and hood
- Printed polyester lining
- Internal security pocket
- Grown on hood with adjusters
- Adjustable cuffs with snap fastening
- Adjustable drawcord waist
- 2 lower patch pockets with handwarmer pockets behind



1. Navy **540**
2. Gold Cumin **05S**
3. Delhi Red **649**
4. Deep Teal **8LM**
5. Black/Magnet Houndstooth **92B**

# SERLEENA

RWP283



6



**Size 8-20**

- Waterproof Hydrafort peached polyester fabric
- Taped seams
- Durable water repellent finish
- Thermo-Guard insulation
- Polyester lining with strategic warm fleece panels
- Internal security pocket
- Grown on hood with adjuster and removable faux fur trim
- 2 way centre front zip
- 1 zipped chest pocket
- Adjustable cuffs
- Adjustable shockcord waist
- 2 lower patch pockets with handwarmer pockets behind
- Fishtail hem



1. Black **800**
2. Dark Khaki **41C**
3. Blue Opal **B56**
4. Delhi Red **649**
5. Gold Cumin **05S**
6. Light Vanilla **045**

# ROMINA

RWP260



Size 8-26

- Waterproof and breathable polyester Isotex 5000 coated taslan fabric
- Breathability rating 5,000/m<sup>2</sup> /24hrs
- Taped seams
- Durable water repellent finish
- Thermo-Guard insulation
- Internal security pocket
- Luxurious faux fur lining to hood, cuffs and facings
- Polyester taffeta lining to the body
- Grown on hood with shockcord adjustment system
- 2 way centre front zip
- 2 lower patch pockets with handwarmer pockets behind



- 1. Dark Khaki/Light Vanilla **BN2**
- 2. Navy/Navy **081**
- 3. Black/Gold **7S1**
- 4. Dehli Red **649**
- 5. Light Vanilla/Light Vanilla **230**
- 6. Prune **8PZ**
- 7. Deep Teal **8LM**
- 8. Blue Opal **B56**

# BERGONIA

RWP266



Size 8-26

- Waterproof Hydrafort polyester fabric
- Taped seams
- Durable water repellent finish
- Thermo-Guard insulation
- Luxury fur lining to upper body and inner hood
- Internal security pocket
- Grown on hood with adjusters
- Adjustable cuffs with snap fastening
- 2 lower pockets with flaps and branded snap fastening



- 1. Black/Gold **7S1**
- 2. Blue Opal **B56**
- 3. Prune **8PZ**
- 4. Dehli Red **649**
- 5. Dark Khaki **41C**
- 6. Gold Cumin **05S**
- 7. Deep Teal **8LM**



**MYLA**  
RWP296



5

**MYLEE**  
RWP265



5

**BRONYA**  
RWW330



5

**Size 8-26**

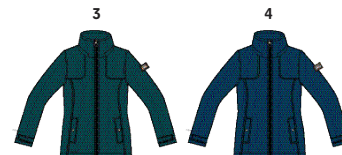
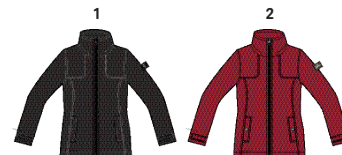
- Waterproof Hydrafort peached polyester fabric
- Taped seams
- Durable water repellent finish
- Thermo-Guard insulation
- Polyester taffeta lining
- Internal security pocket
- Grown on hood with adjuster and removable faux fur trim
- 2 zipped lower pockets
- Back vents with stud fastening



1. Navy 540
2. Dark Khaki 41C
3. Prune 8PZ

**Size 8-26**

- Waterproof Hydrafort peached polyester fabric
- Taped seams
- Durable water repellent finish
- Thermo-Guard insulation
- Polyester taffeta lining
- Internal security pocket
- Foldaway hood with adjuster
- Adjustable cuffs
- 2 lower welt pockets with branded snap fastening
- Back vents with stud fastening



1. Black 800
2. Delhi Red 649
3. Deep Teal 8LM
4. Blue Opal B56

**Size 8-20**

- Waterproof and breathable Isotex 5000 coated polyester fabric
- Waterproof and breathable Isotex 5000 coated polyester fabric with houndstooth print
- Breathability rating 5,000/m<sup>2</sup>/24hrs
- Taped seams
- Durable water repellent finish
- Polyester taffeta lining
- Internal security pocket
- Grown on hood with adjusters
- Adjustable cuffs with snap fastening
- Adjustable shockcord waist system
- 2 zipped lower pockets



1. Delhi Red 649
2. Blue Opal B56
3. Black/White Houndstooth 8K4

# PATCHOULI

RWN141



Size 8-20

- 100% polyester water repellent high shine fabric
- Thermo-Guard insulation
- Polyester taffeta lined
- Internal security pocket
- New fashion zip down hood construction with high pile faux fur trim
- 2 way centre front zip
- Leatherette trim detail
- Turn up cuffs with luxury fur trim
- 2 lower pockets with flaps and branded snap fastening



1. Black **800**
2. Deep Teal **8LM**
3. Navy **540**
4. Prune **8PZ**
5. Toffee Brown **0VD**
6. Blue Opal **B56**
7. Dark Khaki **41C**

# WHITLEY

RWN142



Size 8-20

- 100% polyester water repellent high shine fabric
- Thermo-Guard insulation
- Polyester taffeta lined
- Internal security pocket
- Grown on hood with adjuster and removable faux fur trim
- Leatherette trim detail
- Turn up cuffs with luxury fur trim
- 2 zipped lower warm lined pockets



1. Black **800**
2. Deep Teal **8LM**
3. Prune **8PZ**
4. Navy **540**
5. Gold Cumin **05S**
6. Dark Khaki **41C**

# FERMINA II

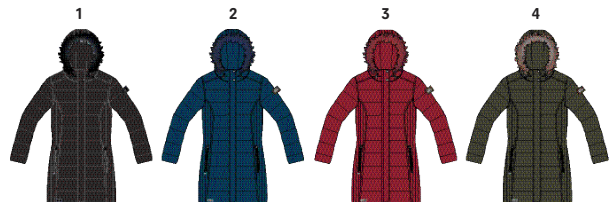
RWN123



3

**Size 8-20**

- Quilted water repellent polyester micro poplin
- Thermo-Guard insulation
- Polyester taffeta lined
- Internal security pocket
- Grown on hood with detachable faux fur trim
- 2 way centre front zip
- 2 zipped lower pockets



- 1. Black/Black 826
- 2. Blue Opal B56
- 3. Delhi Red 649
- 4. Dark Khaki/Neutral KDD

# KALLIE

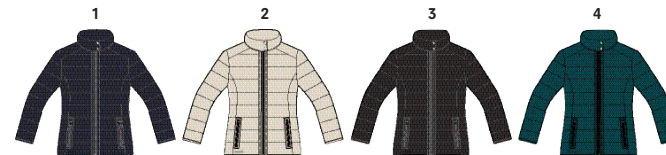
RWN121



3

**Size 8-20**

- 100% Polyamide with water repellent and cire finish
- Synthetic Warmloft down-touch water repellent insulation
- Polyester taffeta lined
- Fashion stand collar with branded snap fastening
- 2 zipped lower warm lined pockets



- 1. Navy/Silver 406
- 2. Light Vanilla/Silver EW3
- 3. Black/Gold 7SI
- 4. Deep Teal 8LM

# CYANNE

RWN143



Size 8-20

- Quilted water repellent polyester micro poplin
- Thermo-Guard insulation
- Printed polyester lining
- Leatherette trim detail
- Self fabric overlay design to shoulder
- Adjustable waist
- 2 lower zipped pockets
- Back vents with stud fastening



1. Black 800
2. Dark Khaki 41C
3. Gold Cumin 05S

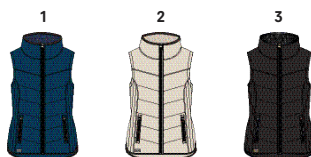
# WYNTER B/W

RWB090



Size 8-20

- 100% polyester water repellent high shine fabric
- Thermo-Guard insulation
- Padded fashion collar
- Leatherette trim detail
- Luxury fur to inner collar
- 2 zipped lower pockets



1. Blue Opal B56
2. Light Vanilla 045
3. Black 800

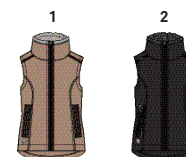
# BENEDETTA B/W

RWB091



Size 8-20

- 380gsm fur pile backed polyester microfleece
- Luxury high pile fur to inner collar
- Leatherette trim detail
- 2 zipped lower pockets



1. Toffee Brown (Toffee Brown) JV2
2. Black (Black) 808

# ADELPHIA

RWL175



1

Size 8-20

- Bonded marl polyester Softshell
- Softshell bonded with marl fleece as backing
- Highly windproof
- 2 way centre front zip
- 2 lower pockets with flaps and branded snap fastening



# CHARLEY

RWL177



4

Size 8-20

- Bonded marl polyester Softshell
- Durable water repellent finish
- Wind resistant
- 2 zipped lower pockets
- Back vents with stud fastening



SOFTSHELL



1. Rock Grey Marl 68M
2. Black 800
3. Navy Marl 540



1. Seal Grey Marl 038
2. Black 800
3. Navy Marl 540
4. Bayleaf Marl 905

# ROXIE

RWA404



Size 8-20

- 355gsm 48% polyester/47% cotton/5% elastane yarn dyed interlock fabric
- Strategic floral printed lining to back panel
- Button front fastening
- 1 chest pocket
- 2 lower pockets



1. Navy 540
2. Rock Grey Marl 68M

# RUSLANA

RWA392



Size 8-20

- 340gsm 85% polyester/15% rayon wool knit effect fleece
- Grown on hood with adjusters
- Leatherette trim detail
- 2 zipped lower pockets



1. Ash 611
2. Blue Opal B56
3. Dark Khaki 41C

# RANATA

RWA390



Size 8-20

- 440gsm polyester mix wool effect fabric with bonded short pile fur back
- 360gsm polyester double layer knit fleece fabric
- Grown on hood
- 2 way centre front zip
- Leatherette trim detail
- 2 zipped lower pockets



1. Ash Texture 611
2. Navy 540
3. Delhi Red 649
4. Deep Teal 8LM
5. Magnet 92E





**TALYA**  
RWA394



Size 8-20

- 270gsm 95% polyester/5% elastane quilted jersey fabric
- Luxury fur fold over collar design with snap fastening
- Leatherette trim detail
- 2 zipped lower pockets



1. Navy 540
2. Black 800
3. Delhi Red 649
4. Deep Teal 8LM

**ZOHARA**  
RWA395



Size 8-20

- 380gsm 88% polyester/10% viscose/2% elastane wool look fabric
- 300gsm 72% polyester/15% acrylic/13% rayon double side wool look fabric
- 235gsm 100% polyester jacquard terry fabric
- Grown on hood with drawcord adjusters
- Leatherette trim detail
- 2 zipped lower pockets



1. Ash 611

**ZUMAR**  
RWA397



Size 8-20

- Polyester micro poplin fabric with water repellent finish lightly padded body panels
- 315gsm 71% polyester/27% rayon/2% elastane interlock jacquard fabric
- 320gsm 100% polyester two tone terry fabric
- Thermo-Guard insulation
- Luxury fur to inner collar
- Leatherette trim detail
- 2 zipped lower pockets



1. Black/Ash 82G
2. Dark Khaki 41C
3. Blue Opal B56
4. Light Vanilla 045

# BENEDETTA

RWA396



1

Size 8-20

- 380gsm fur pile backed polyester microfleece
- Luxury high pile fur to inner collar
- Leatherette trim detail
- Turn up cuffs with luxury fur trim
- 2 zipped lower pockets



1. Black (Black) **808**
2. Blue Opal (Blue Opal) **R3Y**
3. Toffee Brown (Toffee Brown) **JV2**
4. Delhi Red (Delhi Red) **PT1**

# QUINTIA

RWA402



2

Size 8-20

- 285gsm loose knitted fleece
- Cowl neck style



1. Black **800**
2. Prune **8PZ**
3. Deep Teal **8LM**
4. Blue Opal **B56**

# RAIZEL

RWA337



3

Size 8-26

- 500gsm 100% polyester knit effect hi pile bonded fleece
- 2 zipped lower pockets



1. Navy (Light Vanilla) **SV0**
2. Light Vanilla (Light Vanilla) **5KJ**
3. Black (Black) Gold **AAA**
4. Deep Teal (Deep Teal) **2GZ**
5. Prune (Black) **DGK**



# HALONA

RWA399



Size 8-20

- 280gsm 100% polyester two tone dyed stripe fleece
- 260gsm 100% polyester diamond high pile fleece
- 310gsm Two sides brushed polyester/spandex velour
- Leatherette trim detail
- 2 zipped lower pockets



1. Light Vanilla Texture Fur 045
2. Navy Velour 540
3. Black Velour 800
4. Prune Diamond Fur 8PZ
5. Deep Teal Diamond Fur 8LM

# HANISKA

RWA398



Size 8-20

- 260gsm 100% polyester diamond high pile fleece
- New fashion neckline with drawcord adjusters



1. Deep Teal 8LM
2. Light Vanilla 045
3. Blue Opal B56
4. Magnet 92E
5. Navy 540
6. Delhi Red 649

# BERNICE

RWA351



Size 8-20

- 430gsm faux fur pile backed polyester microfleece
- 2 zipped lower pockets



1. Light Vanilla (Toffee Brown) A2Y
2. Black (Black) 808
3. Delhi Red (Burgundy) ZR4
4. Dark Khaki (Light Vanilla) RLI
5. Navy (Navy) 272

FLEECE

# KAYLYNN

RWA401



Size 8-20

- 350gsm 98% polyester/2% elastane quilt fabric
- Grown on hood with snood fit to front
- Leatherette trim detail
- 2 lower pockets



1. Black 800
2. Prune 8PZ
3. Navy 540
4. Deep Teal 8LM

# KIZMIT II

RWA294



Size 8-26

- 220gsm 2 colour broken stripe fleece
- Grown on hood with wrap around cowl neck construction
- 2 lower pockets



1. Light Steel 82F
2. Ash 611
3. Navy 540
4. Light Vanilla 045
5. Delhi Red 649
6. Blue Opal B56
7. Prune 8PZ
8. Deep Teal 8LM
9. Duchesse 5BG

# ZYRANDA

RWA403



Size 8-20

- 230gsm 100% polyester marl fleece
- Adjustable drawcord at collar
- Herringbone trim detail
- 2 lower pockets with herringbone tape detail



1. Light Steel 82F
2. Delhi Red 649
3. Ash 611
4. Blue Opal B56
5. Navy 540
6. Prune 8PZ
7. Deep Teal 8LM
8. Duchess 5BG
9. Light Vanilla 045

# FAYONA

RWA323



Size 8-26

- 250gsm anti-pill Symmetry fleece
- 2 zipped lower pockets



1. Black/Gold 7SI
2. Light Vanilla/Silver EW3
3. Navy/Silver 4Q6
4. Deep Teal 8LM
5. Delhi Red 649

# SOLENE

RWA324



FLEECE



Size 8-26

- 240gsm striped Symmetry fleece
- Half zip



1. Navy 540
2. Light Vanilla 045
3. Prune 8PZ
4. Deep Teal 8LM
5. Blue Opal B56

# MAKALA

RWS106



Size 8-20

- 100% Viscose fabric
- All over print
- Shaped hem



1. Black Exploded Floral **4VL**
2. Delhi Red Exploded Floral **NKD**
3. Navy Exploded Floral **2IN**
4. Light Vanilla Exploded Floral **235**

# FLORDELIS

RWT186



Size 8-20

- 190gsm 100% Coolweave cotton yarn dye jersey
- 190gsm 100% Coolweave cotton single jersey
- All over print
- Button detail to shoulders



1. Deep Teal/Deep Lake **2GR**
2. Navy/Light Vanilla **9XT**
3. Light Vanilla/Blue Opal **D1Y**
4. Prune/Light Vanilla **QDI**
5. Dark Khaki/Light Vanilla **BN2**
6. Black/White **8K4**
7. Navy Exploded Floral **2IN**
8. Delhi Red Exploded Floral **NKD**



**FRAYDA**  
RWT162



4

**Size 8-20**

- 125gsm lightweight wool look fabric
- Cowl neck style



- 1. Black 800
- 2. Navy 540
- 3. Light Vanilla 045
- 4. Deep Teal 8LM
- 5. Prune 8PZ
- 6. Dark Khaki 41C
- 7. Light Steel 82F
- 8. Blue Opal B56

**DARIKA TROUSERS**  
RWJ205



1

**Size 8-20**

- 98% cotton twill, 2% elastane stretch
- 2 front pockets, 1 with small coin pocket
- 2 back pockets



- 1. Navy 540
- 2. Black 800
- 3. Dark Khaki 41C
- 4. Toffee Brown 0VD

# QUERINA CHINO

RWJ195



**Size 8-20**

- 98% Cotton/2% Spandex twill fabric
- Garment washed for softer handle
- Printed inner waistband
- 2 side pockets
- 2 back pockets



1. Navy 540
2. Warm Beige 862

KIDS'  
ACTIVE



# HYDRATE IV 3-IN-1

RKP205



3



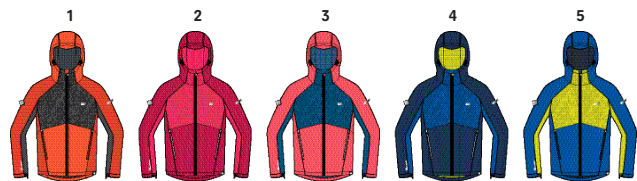
REFLECTIVE

Size 3-12, 13 Yrs

- Waterproof and breathable Isotex 15000 stretch fabric
- Breathability rating 10,000/m<sup>2</sup>/24hrs
- Highly reflective printed stretch panels in strategic zones for enhanced visibility
- Durable water repellent finish
- Taped seams
- Mesh lined
- Grown on hood with sewn on peak at front
- 2 zipped lower pockets
- Adjustable cuffs
- Adjustable shockcord hem age 7+
- Printed name label (up to age 8)

**Inner**

- 140gsm mini stripe microfleece
- 2 lower pockets



1. Rusty Orange/Blaze Orange/Magnet Reflective/Magnet (Blaze Orange) **B3W**
2. Dark Cerise/Neon Pink Reflective/Neon Pink (Dark Cerise) **ZV2**
3. Fiery Coral/Petrol Blue Reflective/Petrol Blue (Fiery Coral) **P76**
4. Prussian/Oxford Blue Reflective/Oxford Blue (Prussian) **2VI**
5. Oxford Blue/Neon Spring Reflective/Neon Spring (Lime Fizz) **X86**

# APTITUDE IV

RKP207



3

Size 3-12, 13 Yrs

- Waterproof and breathable Isotex 15000 100% polyester stretch fabric
- Breathability rating 10,000/m<sup>2</sup>/24hrs
- Durable water repellent finish
- Taped seams
- Thermo-Guard insulation
- Grown on hood with sewn on peak at front
- Articulated sleeve design
- 2 zipped lower pockets and 1 zipped chest pocket
- Adjustable shockcord hem age 7+
- Adjustable cuffs
- Reflective trim



1. Prussian/Oxford Blue **2VI**
2. Magnet/Black **699**
3. Winberry/Vivid Viola **743**
4. Fiery Coral/Petrol Blue **P76**



# VOLCANICS III

RKP208



4

REFLECTIVE

Size 3-12, 13 Yrs

- Waterproof and breathable Isolite 5000 lightweight polyester fabric
- Breathability rating 5,000/m<sup>2</sup>/24hrs
- Highly reflective printed panels in strategic zones for enhanced visibility
- Durable water repellent finish
- Taped seams
- Thermo-Guard insulation
- Grown on hood
- 2 zipped lower pockets
- Stretch binding to hood opening, cuffs and hem



1. Black/Black Reflective **826**
2. Prussian/Oxford Blue/Prussian Reflective **2VI**
3. Winberry/Vivid Viola/Winberry Reflective **743**
4. Neon Pink/Duchess/Neon Pink Reflective **C75**

# HURDLE III

RKP211



1

Size 3-12, 13 Yrs

- Waterproof Hydrafort polyester fabric
- Durable water repellent finish
- Taped seams
- Thermo-Guard insulation
- Grown on hood with elasticsation
- 2 zipped lower pockets
- Adjustable shockcord hem age 7+
- Printed name label (up to age 8)
- Reflective trim



1. Magnet/Black **699**
2. Oxford Blue/Prussian **698**
3. Vivid Viola/Winberry **4UM**
4. Navy **540**
5. Dark Cerise/Neon Pink **ZV2**

# LEVER II

RKW164



3

Size 3-12, 13 Yrs

- Waterproof and breathable Isolite 5000 lightweight polyamide fabric
- Breathability rating 5,000/m<sup>2</sup>/24hrs
- Durable water repellent finish
- Taped seams
- Grown on mesh lined hood
- Mesh lined
- 2 zipped lower pockets
- Packaway - lower left side pocket converts into belt bag
- Stretch binding to hood opening, cuffs and hem
- Printed name label (up to age 8)
- Reflective trim



1. Black **800**
2. Oxford Blue/Pepper **5US**
3. Cabaret **1NX**
4. Ceramic **770**

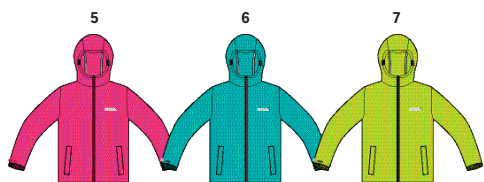
# KIDS PACK-IT JACKET III

RKW213



**Size** 2-12, 13 Yrs

- Waterproof and breathable Isolite 5000 lightweight polyamide fabric
- Breathability rating 5,000/m<sup>2</sup>/24hrs
- Durable water repellent finish
- Taped seams
- Unlined
- Grown on hood with elastication
- 2 lower pockets
- Packs away into stuff sack



1. Black 800
2. Midnight 20I
3. Blaze Orange 4JC
4. Oxford Blue 15
5. Cabaret 1NX
6. Ceramic 770
7. Lime Punch 3N8

# KIDS PACK-IT OVERTROUSERS

RKW110



**Size** 2-12, 13 Yrs

- Waterproof and breathable Isolite 5000 lightweight polyamide fabric
- Breathability rating 5,000/m<sup>2</sup>/24hrs
- Durable water repellent finish
- Taped seams
- Elasticated waist
- 2 side pocket openings
- Packs away into stuff sack



1. Black 800
2. Midnight 20I

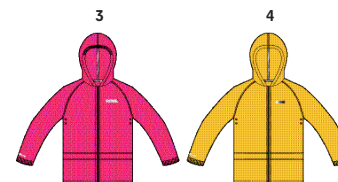
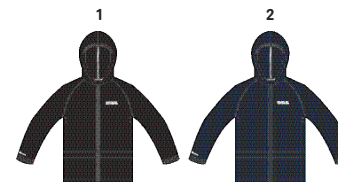
# KIDS STORMBREAK JACKET

W908



**Size** 2-12, 13 Yrs

- Waterproof Hydrafort polyester fabric
- Durable water repellent finish
- Taped seams
- Grown on hood
- Elasticated cuffs
- 2 lower pockets



1. Black 800
2. Navy 540
3. Jem 5AR
4. Lifeguard Yellow 34C

## KIDS STORMBREAK OVERTROUSERS

W808



**Size** 2-12, 13 Yrs

- Waterproof Hydrafort polyester fabric
- Durable water repellent finish
- Taped seams
- 2 side pocket openings
- Press studs at hem



1. Black 800
2. Navy 540

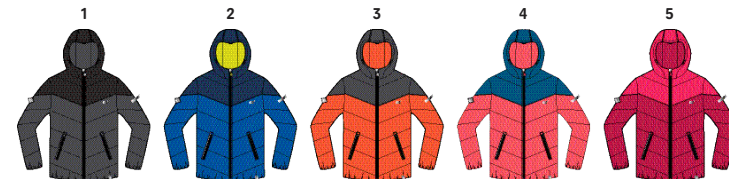
## LOFTHOUSE III

RKN089



**Size** 3-12, 13 Yrs

- 75d polyester fabric
- Durable water repellent finish
- Thermo-Guard insulation
- Heavyweight fill
- Grown on hood
- 2 zipped lower pockets
- Printed name label (up to age 8)
- Elasticated cuffs and hem
- Reflective trim



1. Magnet/Black 699
2. Oxford Blue/Prussian 698
3. Blaze Orange/Magnet XT2
4. Fiery Coral/Petrol Blue P76
5. Dark Cerise/Neon Pink ZV2

# JUNIOR FREEZEWAY

RKN090



**Size** 3-12, 13 Yrs

- Lightweight 20d polyamide fabric
- Durable water repellent finish
- Synthetic Warmloft down-touch water repellent insulation
- Medium weight fill
- 2 zipped lower pockets
- Stretch binding to cuffs
- Printed name label (up to age 8)
- Reflective trim



1. Black **800**
2. Oxford Blue **15**
3. Fiery Coral **2CC**
4. Prussian/Navy **91Q**
5. Blaze Orange/Magnet **XT2**
6. Neon Pink/Dark Cerise **9UY**
7. Vivid Viola/Winberry **4UM**



# JUNIOR FREEZEWAY B/W

RKB051



**Size** 3-12, 13 Yrs

- Lightweight 20d polyamide fabric
- Durable water repellent finish
- Synthetic Warmloft down-touch water repellent insulation
- Medium weight fill
- 2 zipped lower pockets
- Stretch binding to armholes and collar
- Printed name label (up to age 8)
- Reflective trim



1. Black **800**
2. Oxford Blue/Navy **0L8**
3. Neon Pink/Dark Cerise **9UY**



# KIELDER IV HYBRID

RKN083



5

# ASTROX II

RKL091



1

REFLECTIVE

# TAZER

RKL092



2

Size 3-12, 13 Yrs

- Extol Stretch hood, sleeves and side panels for fit and freedom of movement
- Durable water repellent finish to body
- Synthetic Warmloft down-touch water repellent insulation
- Easily compressible
- Lightweight fill
- 2 zipped lower pockets
- Stretch binding to hood opening, cuffs and hem

Size 3-12, 13 Yrs

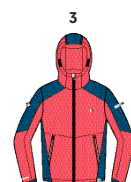
- Warm backed woven stretch Softshell fabric
- Highly reflective printed panels in strategic zones for enhanced visibility
- Durable water repellent finish
- Wind resistant
- 2 zipped lower pockets
- Zip-off hood with elastication
- Adjustable cuffs
- Adjustable shockcord hem age 7+

Size 3-12, 13 Yrs

- Marl polyester Softshell
- Polyamide overlay to hood and chest with durable water repellent finish
- Extol stretch inserts
- Wind resistant
- Grown on hood
- 2 zipped lower pockets
- Stretch binding to hood opening, cuffs and hem



- 1. Black/Magnet **92B**
- 2. Blaze Orange/Magnet **XT2**
- 3. Prussian/Oxford Blue **ZV1**
- 4. Winberry/Vivid Viola **743**
- 5. Petrol Blue/Fiery Coral **J67**
- 6. Dark Cerise/Neon Pink **ZV2**



- 1. Oxford Blue/Prussian Reflective **698**
- 2. Magnet/Blaze Orange Reflective **VFF**
- 3. Fiery Coral/Petrol Blue Reflective **P76**



- 1. Blaze Orange/Magnet **XT2**
- 2. Oxford Blue/Prussian **698**
- 3. Petrol Blue/Fiery Coral **J67**

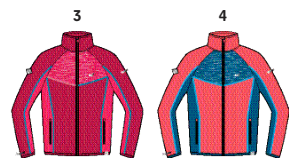
**OBERON**

RKL085



Size 3-12, 13 Yrs

- Extol - warm backed knitted stretch fabric
- 2 zipped lower pockets
- Stretch binding to collar, cuffs and hem



1. Prussian/Oxford Blue/Oxford Blue **2VI**
2. Rusty Orange/Blaze Orange/Seal Grey/Magnet **B3W**
3. Dark Cerise/Duchess/Neon Pink **ABP**
4. Fiery Coral/Petrol Blue/Petrol Blue **P76**

**RIVENDALE**

RKL084



Size 3-12, 13 Yrs

- Fur pile backed woven Softshell fabric
- Durable water repellent finish
- Wind resistant
- 2 lower pockets
- Adjustable shockcord hem age 7+
- Reflective trim



1. Prussian/Oxford Blue **2VI**
2. Magnet/Black **699**
3. Dark Cerise/Neon Pink **ZV2**

**ELTER**

RKA282



Size 3-12, 13 Yrs

- 235gsm 100% polyester two tone fleece
- Extol Stretch side and underarm panels
- Durable water repellent finish to body
- 2 zipped lower pockets
- Stretch binding to collar, cuffs and hem



1. Magnet/Magnet/Blaze Orange **PW4**
2. Prussian/Prussian/Oxford Blue **R68**
3. Petrol Blue/Petrol Blue/Fiery Coral **Z98**

# DISSOLVER II

RKA263



5

Size 3-12, 13 Yrs

- 280gsm 100% polyester marl knit effect fleece
- Extol Stretch side panels
- Grown on hood
- 2 zipped lower pockets
- Stretch binding to hood opening, cuffs and hem



1. Cabaret/Dark Cerise 1TX
2. Magnet/Magnet/Blaze Orange PW4
3. Prussian/Prussian R68
4. Oxford Blue/Prussian 698
5. Petrol Blue/Petrol Blue Z98
6. Fiery Coral/Petrol Blue P76
7. Vivid Viola/Winberry 4UM

# THIRL

RKA311



1

Size 3-12, 13 Yrs

- 250gsm 100% polyester waffle fleece
- Grown on hood
- 2 lower pockets
- Stretch binding to cuffs and hem
- Perforated reflective trim



1. Magnet 92E
2. Oxford Blue 15
3. Neon Pink 83A
4. Winberry 3BG

# JADER

RKA267



1

Size 3-12, 13 Yrs

- 280gsm 100% polyester marl knit effect fleece
- Extol Stretch side panels
- 2 zipped lower pockets
- Stretch binding to collar, cuffs and hem



1. Fiery Coral/Fiery Coral S99
2. Oxford Blue/Prussian 698

**PIRA**  
RKA225



Size 3-12, 13 Yrs

- 140gsm mini stripe microfleece
- Extol Stretch side and underarm panels
- 2 zipped lower pockets
- Stretch binding to collar, cuffs and hem



- 1. Prussian/Oxford Blue **2VI**
- 2. Magnet/Magnet **PW4**
- 3. Dark Cerise/Dark Cerise **2IB**
- 4. Vivid Viola/Vivid Viola **4UX**

**MARLIN VI**  
RKA283



Size 3-12, 13 Yrs

- 180gsm 100% polyester mini grid fleece
- 2 side brushed, 1 side anti-pill
- 1 chest pocket and 2 zipped lower pockets
- Adjustable shockcord hem age 7+



- 1. Magnet **92E**
- 2. Oxford Blue **15**
- 3. Dark Cerise **9A8**
- 4. Vivid Viola **58Z**

**KING II**  
RKA147



Size 3-12, 13 Yrs

- 170gsm Symmetry fleece
- 1 side brushed, 1 side anti pill
- 2 lower pockets



- 1. Black/Black **826**
- 2. Navy/Navy **081**
- 3. Oxford Blue/Navy **0L8**
- 4. Magnet **92E**
- 5. Dark Cerise **9A8**
- 6. Vivid Viola **58Z**



**LOCO**  
RKA224



**Size** 3-12, 13 Yrs

- 140gsm mini stripe microfleece
- Zip neck
- Stretch binding to cuffs and collar



- 1. Magnet 92E
- 2. Prussian 56M
- 3. Vivid Viola 58Z
- 4. Fiery Coral 2CC
- 5. Duchess 5BG
- 6. Petrol Blue 08L



**HOT SHOT II**  
RKA148



**Size** 3-12, 13 Yrs

- 170gsm Symmetry fleece
- 1 side brushed, 1 side anti pill



- 1. Black/Black 826
- 2. Navy/Navy 081
- 3. Oxford Blue/Navy 0LB
- 4. Light Vanilla 045
- 5. Vivid Viola 58Z
- 6. Dark Cerise 9A8
- 7. Dark Khaki 41C
- 8. Magnet 92E
- 9. Fiery Coral 2CC
- 10. Beetroot 47W

# BERLEY

RKT099



Size 3-12, 13 Yrs

- Quick dry polyester grid fabric
- Good wicking performance
- Zip neck



1. Prussian 56M
2. Rusty Orange 33L
3. Duchess 5BG
4. Fiery Coral 2CC

# BEELEY SET

RKU009



Size 3-12, 13 Yrs

- 100% quick dry polyester fabric
- Good wicking performance
- This is a set - includes top and pant



1. Prussian Stripe 14W
2. Duchess Stripe 4WR

# TECH MOUNTAIN TROUSERS



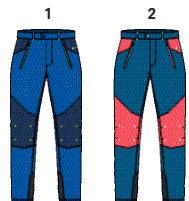
RKJ099



1

Size 2-12, 13 Yrs

- Isoflex - Active stretch fabric - 91% polyester, 9% elastane
- Durazone polyamide overlays at wear points for added strength and durability
- Durable water repellent finish
- Part-elasticated waist
- 2 zipped side pockets
- Articulated knee design for an enhanced range of movement
- Zip opening at ankle
- Elasticated gripper tape hem



- 1. Oxford Blue/Prussian 698
- 2. Petrol Blue/Fiery Coral 367

# DAYHIKE STRETCH TROUSERS II



RKJ064



1

Size 3-12, 13 Yrs

- Waterproof and breathable Isotex 10000 stretch polyester fabric
- Breathability rating 10,000/m<sup>2</sup>/24hrs
- Durable water repellent finish
- Taped seams
- Part-elasticated waist with button adjustment system
- Multi pocketed
- Articulated knee design
- Reflective trim



- 1. Black 800

# SOFTSHELL TROUSERS



RKJ018



1

Size 3-12, 13 Yrs

- Warm backed woven stretch Softshell fabric
- Wind resistant
- Durable water repellent finish
- Part-elasticated waist
- Multi pocketed



- 1. Black 800
- 2. Navy 540

# KIDS' LIFESTYLE



# PROKTOR PARKA

RKP200



**Size** 3-12, 13 Yrs

- Waterproof and breathable Isotex 5000 polyester pongee fabric
- Breathability rating 5,000/m<sup>2</sup>/24hrs
- Taped seams
- Durable water repellent finish
- Thermo-Guard insulation
- Polyester lining with strategic warm fleece panels
- Grown on hood with faux fur trim
- 2 handwarmer pockets to chest
- Internal stormcuffs
- 2 lower patch pockets with handwarmer pockets behind
- Printed name label (up to age 8)
- Reflective trim



1. Navy 540
2. Dark Khaki 41C
3. Rusty Orange 33L

# HALOMA PARKA

RKP201



**Size** 3-12, 13 Yrs

- Waterproof and breathable Isotex 5000 coated polyester twill fabric
- Breathability rating 5,000/m<sup>2</sup>/24hrs
- Taped seams
- Durable water repellent finish
- Thermo-Guard insulation
- Polyester taffeta lining with strategic quilt to back panel and hood
- Grown on hood with faux fur trim
- 2 zipped chest pockets
- Adjustable cuffs
- Internal stormcuffs
- 2 lower patch pockets with side hand warmer entry
- Printed name label (up to age 8)
- Reflective trim



1. Navy 540
2. Beetroot 47W
3. Cypress Green 3QE

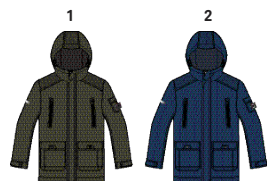
# KELBY

RKP202



**Size** 3-12, 13 Yrs

- Waterproof and breathable Isotex 5000 coated polyester fabric
- Breathability rating 5,000/m<sup>2</sup>/24hrs
- Highly reflective printed panels in strategic zones for enhanced visibility
- Taped seams
- Durable water repellent finish
- Thermo-Guard insulation
- 100% polyester taffeta lining
- Grown on hood with elasticsation and back adjuster
- 2 zipped chest pockets
- Adjustable cuffs
- 2 lower patch pockets with handwarmer pockets behind
- Printed name label (up to age 8)
- Reflective trim



1. Dark Khaki 41C  
2. Prussian 56M

# PALOMINA

RKP203



**Size** 3-12, 13 Yrs

- Waterproof Hydrafort 100% polyester high shine fabric
- Taped seams
- Durable water repellent finish
- Thermo-Guard insulation
- 100% polyester taffeta lining
- Grown on hood with faux fur trim
- 1 zipped chest pocket
- Adjustable cuffs with snap fastening
- Leatherette trim detail
- 2 lower pockets with flaps and branded snap fastening
- Printed name label (up to age 8)
- Reflective trim



1. Beetroot 47W  
2. Navy 540  
3. Deep Lake 2FY

# PERRY

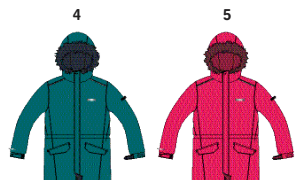
RKP210



3

Size 3-12, 13 Yrs

- Waterproof and breathable Isotex 5000 coated polyester peached fabric
- Taped seams
- Durable water repellent finish
- Thermo-Guard insulation
- 100% polyester taffeta lining
- Grown on hood with faux fur trim
- Elasticated and adjustable cuffs
- 2 Lower handwarmer pockets
- Adjustable drawcord hem age 7+
- Printed name label (up to age 8)
- Reflective trim



1. Black 800
2. Prussian 56M
3. Rusty Orange 33L
4. Deep Lake 2FY
5. Duchess 5BG

# SELWYN

RKP204



2

Size 3-12, 13 Yrs

- Waterproof Hydrafort polyester fabric
- Taped seams
- Durable water repellent finish
- Polyester lining with strategic sherpa fleece panel to body and hood
- All over print to body panels
- Grown on hood with elasticsation
- Elasticated and adjustable cuffs
- 2 x lower handwarmer pockets with branded snap fastenings
- Printed name label (up to age 8)
- Reflective trim



1. Dark Khaki Camo/Dark Khaki 4S6
2. Navy Camo/Navy 081

# BRAYLEE

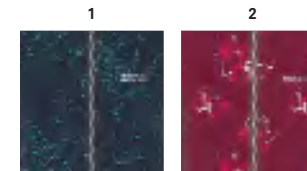
RKP209



2

Size 3-12, 13 Yrs

- Waterproof Hydrafort polyester fabric
- Taped seams
- Durable water repellent finish
- Polyester lining with strategic sherpa fleece panel to body and hood
- Grown on hood with elasticsation
- Elasticated and adjustable cuffs
- 2 x lower handwarmer pockets with branded snap fastenings
- Printed name label (up to age 8)
- Reflective trim



1. Navy Cosmic G3Y
2. Beetroot Floral X78

# AKELLO

RKW236



**Size** 3-12, 13 Yrs

- Waterproof Hydrafort polyester fabric
- Taped seams
- Durable water repellent finish
- Plain and part printed options
- Part mesh, part polyester taffeta lining
- Grown on hood with elastication
- Elasticated cuffs and hem
- 2 zipped lower pockets
- Printed name label (up to age 8)
- Reflective trim



1. Black/Seal Grey 28P
2. Black/Dark Khaki Camo 4TV
3. Navy/Navy Camo ABR

# JAIDYN

RKW235



**Size** 3-12, 13 Yrs

- Waterproof Hydrafort polyester fabric
- Taped seams
- Durable water repellent finish
- Part mesh, part polyester taffeta lining
- Grown on hood with elastication
- Adjustable cuffs
- Part-elasticated waist
- 2 zipped lower pockets
- Printed name label (up to age 8)
- Reflective trim



1. Navy 540
2. Beetroot 47W

# BLUEBELLE

RKN085



**Size** 3-12, 13 Yrs

- 100% polyester water repellent high shine fabric
- Thermo-Guard insulation
- 100% polyester taffeta lining
- Grown on hood with faux fur trim
- 2 way centre front zip
- 2 zipped lower pockets
- Printed name label (up to age 8)
- Reflective trim



1. Beetroot 47W
2. Deep Lake 2FY
3. Black 800
4. Cypress Green 3QE



# WESTHILL

RKN087



1

Size 3-12, 13 Yrs

- 100% polyester water repellent high shine fabric
- Thermo-Guard insulation
- 100% polyester taffeta lining
- New fashion zip down hood construction with high pile faux fur trim
- Luxury fur to inner collar
- Leatherette trim detail
- 2 zipped lower pockets
- Dropped hem
- Printed name label (up to age 8)
- Reflective trim



1. Beetroot 47W
2. Navy 540
3. Deep Lake 2FY

# PASCO

RKN086



2

Size 3-12, 13 Yrs

- Wool look marl mini herringbone polyester fabric with water repellent coating
- Quilted water repellent polyester micro poplin
- Thermo-Guard insulation
- 100% polyester taffeta lining
- Grown on hood with elastication
- 2 chest patch pockets
- Elasticated cuffs
- 2 zipped lower pockets
- Printed name label (up to age 8)
- Reflective trim



1. Dark Khaki 41C
2. Black 800
3. Navy 540
4. Rusty Orange 33L

# KENYA

RKA279



3

Size 3-12, 13 Yrs

- Polyester micro poplin fabric with water repellent finish lightly padded body panels
- 250gsm 100% polyester interest fleece with knit effect face
- Thermo-Guard insulation
- 2 zipped lower pockets



1. Prussian 56M
2. Black 800
3. Dark Khaki 41C
4. Light Vanilla 045
5. Beetroot 47W
6. Deep Lake 2FY

# MEYER

RKA275



Size 3-12, 13 Yrs

- 350gsm 100% polyester high pile borg fleece
- Polyester micro poplin overlays to collar, shoulders and chest pocket
- 1 zipped chest pocket
- 2 zipped lower pockets



1. Prussian/Navy **91Q**
2. Oat/Navy **Y1D**
3. Dark Khaki/Black **0JV**
4. Black/Seal Grey **28P**
5. Rusty Orange/Seal Grey **TFF**

# KERALA

RKA276



Size 3-12, 13 Yrs

- 280gsm 100% polyester two tone fluffy fleece
- 260gsm 100% polyester diamond high pile fleece
- 2 zipped lower pockets



1. Light Vanilla **045**
2. Beetroot **47W**
3. Navy **540**
4. Cypress Green **3QE**

# KEERA

RKA268



Size 3-12, 13 Yrs

- 280gsm 100% polyester two tone fluffy fleece
- 260gsm 100% polyester needle out fluffy fleece
- Zip neck
- 2 zipped lower pockets



1. Navy **540**
2. Duchess **5BG**
3. Deep Lake **2FY**
4. Light Vanilla **045**

# HABIBA

RKA277



1

Size 3-12, 13 Yrs

- 260gsm 100% polyester diamond high pile fleece
- Cowl neck style
- Fixed drawcord detail



1. Navy 540
2. Deep Lake 2FY
3. Beetroot 47W
4. Cypress Green 3QE

# KEYON

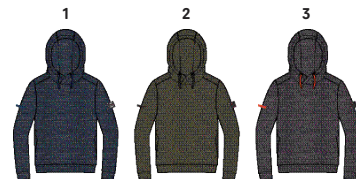
RKA269



3

Size 3-12, 13 Yrs

- 240gsm 2 colour broken stripe fleece
- Grown on hood with wrap over construction
- Fixed drawcord detail
- 2 lower pockets



1. Navy 540
2. Dark Khaki 41C
3. Ash 61I

# MELOR

RKA270



3

Size 3-12, 13 Yrs

- 350gsm 100% polyester high pile borg fleece
- Polyester Micro poplin woven overlays to collar, placket and pocket
- Half placket with branded snap fastening
- Sleeve patch pocket



1. Navy 540
2. Oat 366
3. Dark Khaki 41C

# KACIE

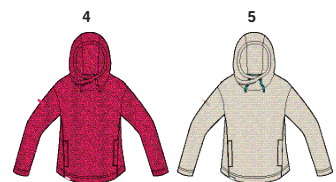
RKA274



2

Size 3-12, 13 Yrs

- 240gsm 2 colour broken stripe fleece
- Grown on hood with wrap around cowl neck construction
- Fixed drawcord detail
- 2 lower pockets



1. Deep Lake 8LM
2. Fiery Coral 2CC
3. Duchess 5BG
4. Beetroot 47W
5. Light Vanilla 045

# LOVELY JUBBLIE

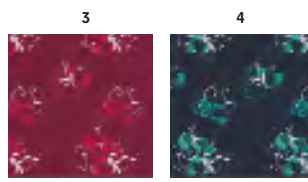
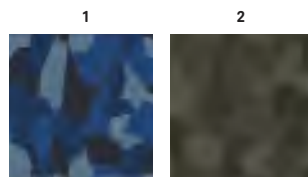
RKA163



1

Size 3-12, 13 Yrs

- 170gsm Symmetry fleece
- 1 side brushed, 1 side anti pill
- Printed pattern fleece



1. Navy Geo Camo 231
2. Dark Khaki Geo Camo R4T
3. Beetroot Floral X78
4. Navy/Ceramic Floral 5UK

# WENDELL

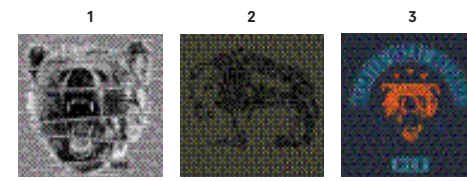
RKT100



1

Size 3-12, 13 Yrs

- 100% Coolweave cotton
- Boys and girls specific fit
- Graphic print



1. Rock Grey Marl 68M
2. Dark Khaki 41C
3. Navy Bear N2V
4. Beetroot 47W
5. Light Vanilla 045
6. Navy Cosmic G3Y

# Little Adventurers



**JOELY**  
RKA281



Little  
Adventurers

**Size** 6-12, 12-18, 18-24, 24-36, 36-48, 48-60, 60-72 Months

- 190gsm 100% polyester fluffy short pile fleece fabric
- Grown on hood with animal character ears
- Kangaroo pocket to front



1. Light Vanilla 045
2. Carmine Rose R4R
3. Oxford Blue 15
4. Cypress Green 3QE

**PANYA**  
RKN084



Little  
Adventurers

**Size** 6-12, 12-18, 18-24, 24-36, 36-48 Months

- 100% nylon with water repellent and cure finish
- Durable water repellent finish
- Thermo-Guard insulation
- Fleece lining to body and hood
- Grown on hood with luxury fur trim and animal character ears
- Fold back mitten
- Stretch binding to cuffs and leg hems
- Reflective trim



1. Beetroot 47W
2. Light Vanilla 045
3. Navy 540

**MUDPLAY III**  
RKP191

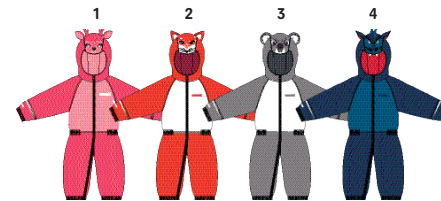


Little  
Adventurers



**Size** 6-12, 12-18, 18-24, 24-36, 36-48 Months

- Waterproof and breathable Isolite lightweight polyamide fabric
- Breathability rating 5,000/m<sup>2</sup>/24hrs
- Taped seams
- Durable water repellent finish
- Thermo-Guard insulation
- Fleece lining to body and hood
- Grown on hood
- Animal face on hood with ears
- Elasticated waist and cuffs
- Reflective trim



1. Geranium/Pink Blossom 5RB
2. Burnt Salmon/White JQ1
3. Rock Grey/White J88
4. Prussian/Blue Sapphire ZN1

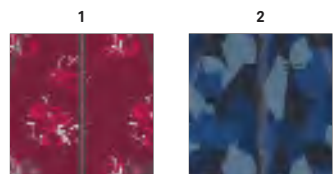
# PRINTED SPLAT II

RKP192



**Size** 6-12, 12-18, 18-24, 24-36, 36-48, 48-60, 60-72 Months

- Waterproof and breathable Isolite lightweight polyester fabric
- Breathability rating 5,000/m<sup>2</sup>/24hrs
- Taped seams
- Durable water repellent finish
- Thermo-Guard insulation
- Fleece lining to body and hood
- Grown on hood
- Elasticated waist and cuffs
- Reflective trim



- 1. Beetroot Floral X78
- 2. Navy Geo Camo 231

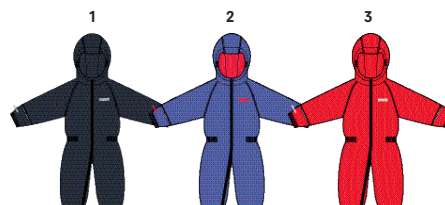
# SPLOSH III

RKP155



**Size** 6-12, 12-18, 18-24, 24-36, 36-48, 48-60, 60-72 Months

- Waterproof and breathable Isolite lightweight polyamide fabric
- Breathability rating 5,000/m<sup>2</sup>/24hrs
- Taped seams
- Durable water repellent finish
- Thermo-Guard insulation
- Fleece lining to body and hood
- Grown on hood
- Elasticated waist and cuffs
- Reflective trim



- 1. Navy 540
- 2. Peony 4QX
- 3. Pepper 9Y6

# PUDDLE IV

RKW156



**Size** 6-12, 12-18, 18-24, 24-36, 36-48, 48-60, 60-72 Months

- Waterproof and breathable Isolite lightweight polyamide fabric
- Breathability rating 5,000/m<sup>2</sup>/24hrs
- Taped seams
- Durable water repellent finish
- Grown on hood
- Elasticated waist and cuffs
- Reflective trim



- 1. Navy 540
- 2. Oxford Blue 15
- 3. Pepper 9Y6
- 4. Jem 5AR

ADULTS  
ACCESSORIES





# SAMPSON WAX HAT

RUC051



Size S-M, L-XL

- 65% polyester/35% cotton mix fabric with genuine wax finish
- Printed checked lining



1. Black 800  
2. Dark Khaki 41C

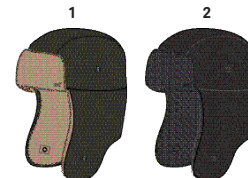
# HALIAN TRAPPER HAT II

RMC084



Size S-M, L-XL

- Waterproof and breathable Isotex 5000 100% polyester marl peach fabric
- Taped seams
- Durable water repellent finish
- Borg fleece trim
- Borg fleece lined
- Fold up neck and ear protector with snap fastening



1. Bayleaf 905  
2. Black 800

# CADELL CAP II

RMC085



2

### Size Single Size

- Waterproof and breathable Isotex 8000 wool effect fabric
- Taped seams
- Durable water repellent finish
- 100% polyester taffeta printed lining
- Buckle adjuster at back



1. Black 800
2. Navy 540
3. Bayleaf 905

# HARREL HAT II

RMC082



2

### Size Single Size

- 100% acrylic chunky marl yarn knit



1. Blue Wing 68E
2. Bayleaf 905
3. Black 800
4. Rock Grey/Magnet Marl K97

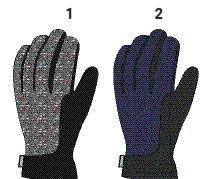
# MEN'S GERSON GLOVES

RMG017



**Size** S-XL

- Genuine leather
- 100% polyester knit effect fleece panel
- Fleece lining



- 1. Black/Dust Marl **8M3**
- 2. Navy/Blue Opal Marl **S76**

# DAVION HAT II

RMC083



**Size** Single Size

- 100% polyester marl stripe knit
- Knitted pom pom
- 100% polyester fleece lining



- 1. Black **800**
- 2. Navy **540**
- 3. Bayleaf **905**
- 4. Burgundy **173**

# DAVION GLOVES

RMG120



**Size** S-M, L-XL

- 100% polyester marl stripe knit



- 1. Black **800**
- 2. Navy **540**
- 3. Burgundy **173**
- 4. Bayleaf **905**

# BALTON BEANIE

RMC070



1

Size Single Size

- 100% cotton 12gg knit
- 100% polyester fleece lining



- 1. Black/Rock Grey 9BL
- 2. Navy/Black 58F
- 3. Bayleaf 905

# BALTON GLOVES

RMG018



1

Size S-M, L-XL

- 100% cotton jersey knit
- Fleece lined



- 1. Black/Rock Grey 9BL
- 2. Navy/Black 58F
- 3. Bayleaf 905

# BALTON SCARF

RMC075



1

Size Single Size

- 100% acrylic knit
- Plain and stripe option



- 1. Black 800
- 2. Navy 540
- 3. Black Stripe 69D

# FLOY CHULLO

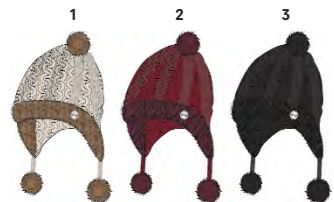
RWC106



2

**Size** Single Size

- 100% chunky acrylic knit
- Luxury high pile fur
- Faux fur pom poms
- 100% polyester short pile fluffy fleece lining



1. Light Vanilla 045
2. Delhi Red 649
3. Black 800

# LORELAI HAT

RWC107



4

**Size** Single Size

- 100% acrylic knit with sequins
- Faux fur pom pom
- 100% polyester short pile fluffy fleece lining



1. Black 800
2. Navy 540
3. Delhi Red 649
4. Light Vanilla 045

# HARLETH SNOOD II

RWC101



3

**Size** Single Size

- 100% acrylic knit with sequins
- 100% polyester short pile fluffy fleece lining



1. Black 800
2. Navy 540
3. Delhi Red 649
4. Light Vanilla 045

# FROSTY HAT III

RWC100



**Size** Single Size

- 100% acrylic knit
- Knitted pom pom
- 100% polyester short pile fluffy fleece lining



1. Navy Multi **540**
2. Delhi Red Multi **649**
3. Prune Multi **8PZ**
4. Light Steel Multi **82F**
5. Light Vanilla **045**

# FROSTY GLOVES III

RWG045



**Size** S-M, L-XL

- 100% acrylic knit



1. Navy Multi **540**
2. Prune Multi **8PZ**
3. Delhi Red Multi **649**
4. Light Steel Multi **045**
5. Light Vanilla Multi **82F**

# FROSTY SCARF III

RWC102



**Size** Single Size

- 100% acrylic knit
- Knitted pom poms



1. Navy Multi **540**
2. Prune Multi **8PZ**
3. Delhi Red Multi **649**
4. Light Steel Multi **82F**
5. Light Vanilla Multi **045**

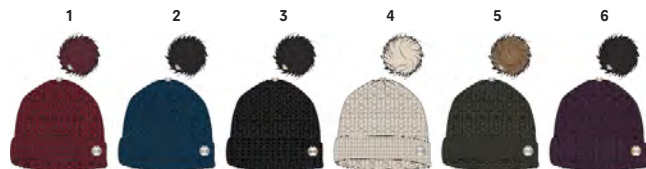
# LOVELLA HAT II

RWC099



**Size** Single Size

- 100% chunky acrylic knit
- Removable faux fur pom pom
- Part of mix and match pom pom package



1. Delhi Red **649**
2. Blue Opal **B56**
3. Black **800**
4. Light Vanilla **045**
5. Dark Khaki **41C**
6. Prune **8PZ**



# LOVELLA SCARF

RWC108



**Size** Single Size

- 100% chunky acrylic knit
- Removable faux fur pom poms
- Part of mix and match pom pom package



1. Delhi Red **649**
2. Blue Opal **B56**
3. Black **800**
4. Light Vanilla **045**
5. Dark Khaki **41C**
6. Prune **8PZ**



# LUZ HAT

RWC091



3

**Size** S-M, L-XL

- 100% cotton jersey knit
- Faux fur trim



1. Light Vanilla 045
2. Black 800
3. Prune 8PZ

# LUZ GLOVES

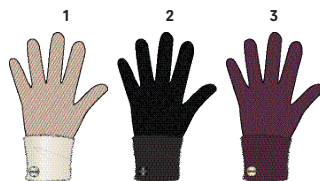
RWG042



3

**Size** S-M, L-XL

- 100% cotton jersey knit
- Faux fur trim



1. Light Vanilla 045
2. Black 800
3. Prune 8PZ

# KAENA HAT

RWC110



2

**Size** Single Size

- 100% acrylic chunky 2 tone yarn knit



1. Black 800
2. Deep Teal 8LM
3. Delhi Red 649
4. Light Vanilla 045



# KAENA SCARF

RWC111



3

Size Single Size

- 100% acrylic chunky 2 tone yarn knit
- Chunky yarn fringed hem



1. Black 800
2. Deep Teal 8LM
3. Delhi Red 649
4. Light Vanilla 045

# AZNI HAT

RWC109



1

Size S-M, L-XL

- 100% printed polyester microfleece
- Knitted pom pom
- 100% polyester fleece lining



1. Navy Floral 2IN
2. Delhi Red Houndstooth ZT3
3. Black Houndstooth N4W

# AZNI GLOVES

RWG047



3

Size S-M, L-XL

- 100% printed polyester microfleece
- Ribbed cuffs



1. Navy/Blue Opal S76
2. Delhi Red Houndstooth ZT3
3. Black Houndstooth N4W

# AGATA HEADBAND

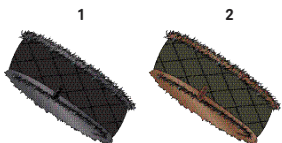
RWC104



1

Size Single Size

- Luxury high pile fur
- 100% polyester microfleece
- Reversible design



- 1. Black 800
- 2. Dark Khaki 41C

# LUXURY FUR WRISTLETS

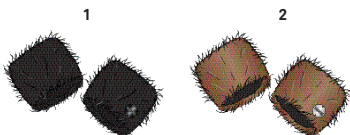
RWG046



1

Size Single Size

- Luxury high pile fur
- 100% polyester fleece lining



- 1. Black 800
- 2. Natural 707

# ELISKA EAR MUFFS II

RWC114



2

Size Single Size

- Suedette bonded high pile fur fleece
- Adjustable head band for comfortable fit



- 1. Saddle 0GS
- 2. Black 800

## GELSEY GLOVES

RWG043



2

Size S, M, L

- Genuine leather
- 100% polyester knit effect fleece panel

## MULTIMIX GLOVES II

RWG044



3

Size S-M, L-XL

- 100% acrylic
- Cable knit

## MULTIMIX SCARF II

RWC093



3

Size Single Size

- 100% acrylic
- Cable knit



1. Black/Ash Marl 82G
2. Navy/Blue Wing Marl 3GH



1. Black 800
2. Navy 540
3. Delhi Red 649
4. Deep Teal 8LM



1. Black 800
2. Navy 540
3. Delhi Red 649
4. Deep Teal 8LM

# PEGGIE III

RWC103



**Size** Single Size

- 100% cotton
- Coolweave cotton lightweight voile fabric
- All over print



# CORVINA HAT & MITTS SET II

RWC115

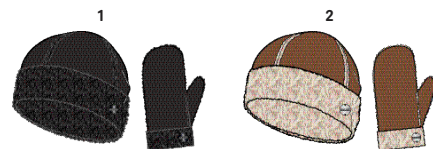


**Size** S-M, L-XL

- Suedette bonded high pile fur fleece



1. Black Houndstooth N4W
2. Delhi Red Floral NKD
3. Light Vanilla Exploded Floral 235
4. Navy Exploded Floral 2IN



1. Black/Black 826
2. Saddle/Light Vanilla 4ZY

# MIX & MATCH POM POM

RWC116



**Size** Single Size

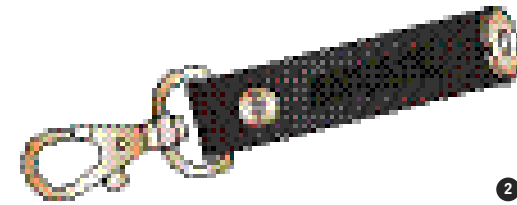
- Faux fur pom pom
- Part of mix and match pom pom package



1. Black 800
2. Natural 707
3. Navy 540
4. Light Vanilla 045
5. Burgundy 173
6. Prune 8PZ
7. Gold Cumin 05S

# MIX & MATCH KEYRING

RWC117



**Size** Single Size

- Leatherette strap with embossed branding
- Keyring clip
- Snap for faux fur pom poms
- Part of mix and match pom pom package



1. Saddle 0GS
2. Black 800

# BREVIS BEANIE

RUC044



Size S-M, L-XL

- 100% acrylic knit
- 100% polyester fleece lining
- Waterproof internal membrane



- 1. Black 800
- 2. Rock Grey 68M
- 3. Navy 540

# BREVIS GLOVES

RUG006



Size S-M, L-XL

- 100% acrylic knit
- 100% polyester fleece lining
- Waterproof internal membrane
- Textured gripped palm



- 1. Black 800
- 2. Navy 540
- 3. Beetroot 47W

# RUSHLEY HAT

RWC098



Size S-M, L-XL

- 100% acrylic knit
- 100% polyester fleece lining
- Waterproof internal membrane



- 1. Beetroot 47W
- 2. Prussian 56M

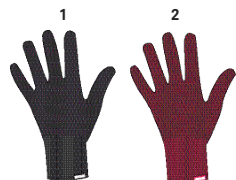
# RUSHLEY GLOVES

RWG050



Size S-M, L-XL

- 100% acrylic knit
- 100% polyester fleece lining
- Waterproof internal membrane
- Textured gripped palm



- 1. Black 800
- 2. Beetroot 47W

# PADDED IGNITER HAT

RMC059



Size S-M, L-XL

- Waterproof Hydrafort taslan fabric
- Taped seams
- Thermo-Guard insulation
- Integral wired peak
- Size adjustment strap
- Adjustable shockcord neck cinch



- 1. Black 800

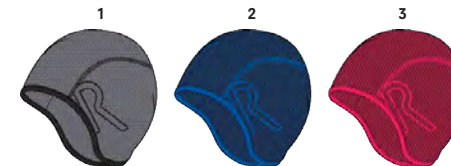
# RAFTER BEANIE

RUC045



Size S-M, L-XL

- Quick dry polyester grid fabric
- Good wicking performance



- 1. Seal Grey 038
- 2. Prussian 56M
- 3. Beetroot 47W

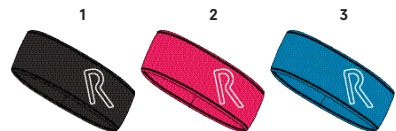
# ACTIVE HEADBAND

RWC097



**Size** Single Size

- Extol - warm backed knitted stretch fabric
- 90% polyester/10% elastane



1. Black 800
2. Duchess 5BG
3. Atlantic Blue 34L

# KINGSDALE HAT

RMC044



**Size** S-M, L-XL

- Thermal Balance Plus microfleece
- Thinsulate lined



1. Black 800
2. Navy 540

# KINGSDALE GLOVES

RMG014



**Size** S-M, L-XL

- Thermal Balance Plus microfleece
- Thinsulate lined
- Faux nubuck palm



1. Black 800
2. Navy 540



# MEN'S TRANSITION WATERPROOF GLOVES

RMG013



Size S-M, L-XL

- Waterproof Hydrafort polyester fabric
- Warm scrim lining
- Thermo-Guard insulation
- Textured PVC palm and fingertips
- Adjustable shockcord cuff



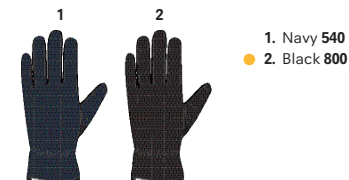
# QUILTED GLOVES

RUG005



Size S-XL

- 100% polyester fleece fabric
- Polyamide overlay with durable water repellent finish
- Textured gripped palm



# SOFTSHELL GLOVES

RMG010



Size S-XL

- Warm backed woven stretch Softshell fabric
- Elasticated cuffs



# TOUCHTIP STRETCH GLOVES

RMG009



**Size S-XL**

- Warm backed woven stretch Softshell fabric
- Silicon grip palms for wet weather conditions
- Conductive thumb and index finger
- Touch Tip technology for the use of touch screen gadgets, allowing hands to remain warm in cold weather conditions



- 1. Black 800
- 2. Blackberry Wine 7QF

# EXTOL GLOVES

RMG011



**Size S-XL**

- Extol - warm backed knitted stretch fabric
- Fleece cuffs



- 1. Black 800

# ADULTS ACTIVE PACK MULTITUBE II

RUC049P



1

**Size** Single Size

- Pack of 18 x 2 of each colour
- 100% polyester
- Knitted stretch fabric
- Multi-functional tube for head and neck wear
- Lightweight and wind resistant
- Various end uses
- Seam free for comfort
- Quick drying - wicks moisture away



1. Active Mixed 2 COM

- Atlantic Blue (X2)
- Fiery Coral (X2)
- Beetroot (X2)
- Duchess (X2)
- Oxford Blue (X2)
- White (X2)
- Magnet (X2)
- Burnt Salmon (X2)
- Deep Teal (X2)

# ADULTS OUTDOOR PACK MULTITUBE III

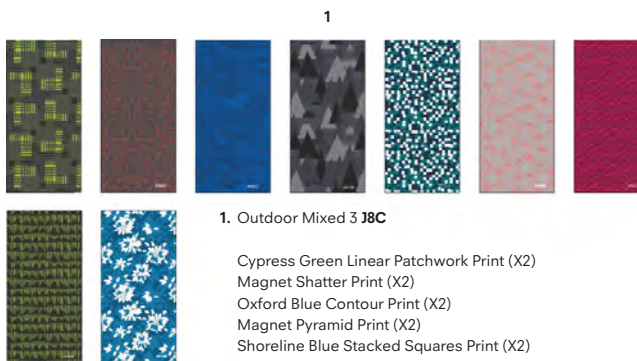
RUC050P



1

**Size** Single Size

- 100% polyester
- Knitted stretch fabric
- Multi-functional tube for head and neck wear
- Lightweight and wind resistant
- Various end uses
- Seam free for comfort
- Quick drying - wicks moisture away



1. Outdoor Mixed 3 J8C

- Cypress Green Linear Patchwork Print (X2)
- Magnet Shatter Print (X2)
- Oxford Blue Contour Print (X2)
- Magnet Pyramid Print (X2)
- Shoreline Blue Stacked Squares Print (X2)
- Light Steel Linear Floral Print (X2)
- Beetroot Fan Print (X2)
- Petrol Blue Scattered Floral Print (X2)
- Bayleaf Peak Print (X2)

# ADULTS MULTITUBE II

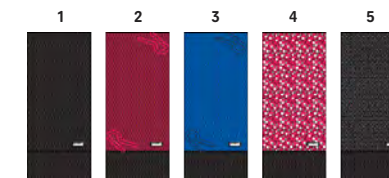
RMC058



2

**Size** Single Size

- 100% polyester
- Knitted stretch fabric
- Fleece lined
- Multi-functional tube for head and neck wear
- Lightweight and wind resistant
- Seam free for comfort
- Quick drying - wicks moisture away



- 1. Black 800
- 2. Beetroot 47W
- 3. Oxford Blue (Prussian) 92Z
- 4. Duchess Dot Print 74C
- 5. Magnet Geo Cross Print 8A0

# STEADFAST NECK GAITOR III

RMC061



**Size** Single Size

- Thermal Balance Plus microfleece
- Adjustable shockcord top



- 1. Black 800
- 2. Navy 540

# KONEX WEBBING BELT

RUC039



**Size** Single Size

- Stretch belt for maximum comfort
- Lightweight and durable
- Fully adjustable
- Regatta branded snap lock buckle



- 1. Black 800

# KIDS' ACCESSORIES



# TAVIS TRAPPER HAT II

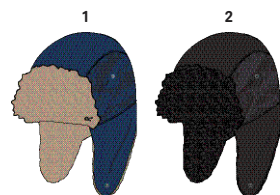
RKC170



REFLECTIVE

Size 4-6, 7-10, 11-13 Yrs

- Waterproof and breathable Isotex 5000 100% polyester marl peach fabric
- Waterproof Hydrafort peached polyester fabric with highly reflective print
- Taped seams
- Durable water repellent finish
- Warm sherpa fleece lining
- Fold up neck and ear protector with snap fastening



1. Prussian 56M
2. Black 800

# BALZAK BEANIE II

RKC176



Size 4-6, 7-10, 11-13 Yrs

- 100% chunky acrylic knit



1. Prussian 56M
2. Black 800
3. Dark Khaki 41C

# DAVIN HAT II

RKC177



Size 4-6, 7-10, 11-13 Yrs

- 100% acrylic knit
- Knitted pom pom
- 100% polyester fleece lining



1. Black Multi 800
2. Dark Khaki Multi 41C
3. Navy Multi 540

# CASSIANA CHULLO

RKC178



Size 4-6, 7-10, 11-13 Yrs

- 100% chunky acrylic knit
- Luxury high pile fur
- Faux fur pom poms
- 100% polyester short pile fluffy fleece lining



1. Beetroot 47W
2. Navy 540
3. Light Vanilla 045

# BITSIE HAT

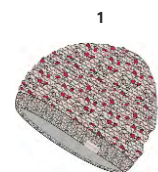
RKC182



2

**Size** 4-6, 7-10, 11-13 Yrs

- 65% acrylic/35% polyester slub yarn knit
- 100% polyester fleece lining



1



2



3

1. Light Vanilla 045
2. Beetroot 47W
3. Navy 540

# BITSIE SNOOD

RKC187



3

**Size** Single Size

- 65% acrylic/35% polyester slub yarn knit
- 100% polyester fleece lining



1



2



3

1. Light Vanilla 045
2. Navy 540
3. Beetroot 47W

# HEDY LUX HAT II

RKC174



3

**Size** 4-6, 7-10, 11-13 Yrs

- 100% acrylic knit with sequins
- Faux fur pom poms
- 100% polyester fleece lining



1



2



3



4

1. Navy 540
2. Duchess 5BG
3. Ceramic 770
4. Light Vanilla 045

# HEDY LUX SCARF

RKC185



3

**Size** Single Size

- 100% acrylic knit with sequins
- Faux fur pom poms



1



2



3



4

1. Light Vanilla 045
2. Navy 540
3. Duchess 5BG
4. Ceramic 770

# EZORA EAR MUFFS

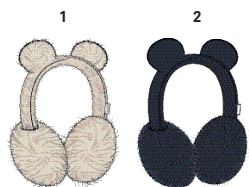
RKC156



1

**Size** Single Size

- 100% polyester fluffy short pile fleece to band with character animal ears
- Faux fur large pom poms as ear muffs



1. Light Vanilla 045
2. Navy 540
3. Duchess 5BG

# LUMINOSITY HAT III

RKC171



2

REFLECTIVE

**Size** 4-6, 7-10, 11-13 Yrs

- 100% acrylic knit with reflective thread
- Knitted pom pom
- 100% polyester fleece lining



1. Beetroot 47W
2. Navy 540
3. Dark Khaki 41C
4. Rusty Orange 33L

# LUMINOSITY GLOVES

RKG047



1

REFLECTIVE

**Size** 4-6, 7-10, 11-13 Yrs

- 100% acrylic knit with reflective thread
- 100% polyester fleece lining



1. Navy 540
2. Dark Khaki 41C
3. Beetroot 47W
4. Rusty Orange 33L

# FALLON HAT

RKC153



4

**Size** 4-6, 7-10, 11-13 Yrs

- 100% printed polyester microfleece
- Knitted pom pom
- 100% polyester fleece lining



1. Navy Cosmic G3Y
2. Beetroot Floral Z78
3. Navy Geo Camo 47M
4. Dark Khaki Geo Camo R4T



# FALLON GLOVES

RKG043



Size 4-6, 7-10, 11-13 Yrs

- 100% printed polyester microfleece



- 1. Beetroot Floral X78
- 2. Dark Khaki Geo Camo R4T

# MERLE GLOVES

RKG045



Size 4-6, 7-10, 11-13 Yrs

- 100% acrylic
- Cable knit
- 100% polyester fleece lining



- 1. Black 800
- 2. Navy 540
- 3. Duchess 58G
- 4. Dark Khaki 41C

# ANIMALLY HAT III

RKC173

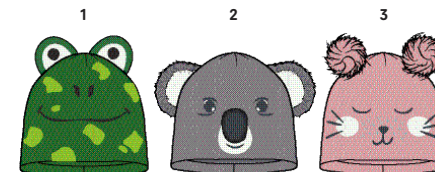


Little Adventurers



Size 1-3, 4-6 Yrs

- 100% acrylic knit
- Knitted pom poms
- Novelty animal faces
- 100% polyester fleece lining



- 1. Alpine Green Frog 7NN
- 2. Rock Grey Koala 68M
- 3. Powder Pink Rabbit 013
- 4. Lipstick Red Ladybird 077
- 5. Beetroot Owl 47W
- 6. Prussian Dragon 56M
- 7. Hawaiian Sunset Fox Y1T

# ANIMALLY MITTS III

RKG046

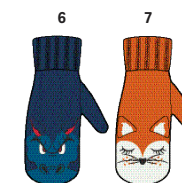


Little Adventurers



Size 1-3, 4-6 Yrs

- 100% acrylic knit
- Novelty animal faces
- 100% polyester fleece lining



- 1. Alpine Green Frog 7NN
- 2. Rock Grey Koala 68M
- 3. Powder Pink Rabbit 013
- 4. Lipstick Red Ladybird 077
- 5. Beetroot Owl 47W
- 6. Prussian Dragon 56M
- 7. Hawaiian Sunset Fox Y1T

# KIDS SPATTER MITTS III

RKG038



1

Size 1-3, 4-6 Yrs

- Waterproof Hydrafort polyester fabric
- Thermo-Guard insulation
- Textured gripped palm
- Warm scrim lining



- 1. Navy Geo Camo 4VM
- 2. Beetroot Floral X78

# BANWELL BEANIE

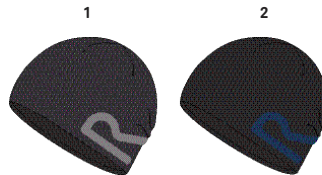
RKC186



2

Size 4-6, 7-10, 11-13 Yrs

- 100% acrylic knit
- 100% polyester fleece lining
- Waterproof internal membrane



- 1. Black 800
- 2. Navy 540
- 3. Jem 5AR

# BANWELL GLOVES

RKG048



2

Size 4-6, 7-10, 11-13 Yrs

- 100% acrylic knit
- 100% polyester fleece lining
- Waterproof internal membrane
- Textured gripped palm



- 1. Black 800
- 2. Navy 540
- 3. Jem 5AR

# TAZ HAT II

RKC088



3

Size 4-6, 7-10, 11-13 Yrs

- 280 series anti-pill Symmetry fleece
- Warm scrim lining



- 1. Black 800
- 2. Navy 540
- 3. Jem 5AR

# KIDS TAZ GLOVES II

RKG024



Size 4-6, 7-10, 11-13 Yrs

- 280 series anti-pill Symmetry fleece
- Warm scrim lining



- 1. Black 800
- 2. Navy 540
- 3. Jem 5AR

# KIDS ARLIE II W/P GLOVES

RKG040



Size 4-6, 7-10, 11-13 Yrs

- Waterproof Hydrafort polyester fabric
- Thermo-Guard insulation
- Textured gripped palm
- Reflective print detail
- Warm scrim lining



- 1. Black 800
- 2. Bright Blush 0CX

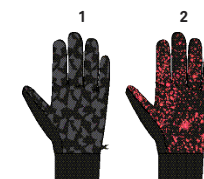
# KIDS GRIPPY GLOVES

RKG031



Size 4-6, 7-10, 11-13 Yrs

- Lightweight polyester stretch fabric
- Rubber palms for extra grip



- 1. Black/Magnet 92B
- 2. Black/Fiery Coral 376

# DOG ACCESSORIES



# ADDISON DOG JACKET

RDE028



## Size S-XL

- Waterproof and breathable Isotex 5000 wool effect fabric
- Taped seams
- Durable water repellent finish
- Thermo-Guard insulation
- Polyester taffeta lining
- Corduroy collar trim
- Leatherette trim detail
- Adjustable hook and loop straps to ensure correct fit



1. Briar Wool Effect 8EI

# ALDO DOG COAT

RDE029



## Size S-XL

- Waterproof and breathable Isotex 5000 coated polyester fabric
- Taped seams
- Durable water repellent finish
- All over print
- 100% polyester taffeta lining
- Button hole to collar for lead
- Adjustable hook and loop straps to ensure correct fit



1. Navy Check 540  
2. Delhi Red Exploded Floral Print 649

# SHEP DOG JACKET

RDE030



## Size S-XL

- Waterproof and breathable Isotex 5000 coated polyester fabric
- Taped seams
- Durable water repellent finish
- 100% polyester taffeta lining
- Button hole to collar for lead
- Reflective piping
- Adjustable hook and loop straps to ensure correct fit



1. Oxford Blue 15

# ODIE DOG COAT

RDE031

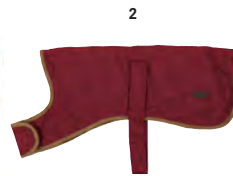


## Size S-XL

- Quilted water repellent polyester micro poplin
- Durable water repellent finish
- Thermo-Guard insulation
- Polyester taffeta lining
- Suedette Trim
- Adjustable hook and loop straps to ensure correct fit



1



2

1. Dark Khaki 41C  
2. Delhi Red 649

# REFLECTIVE VEST

RDE013



- Reflective detail for enhanced visibility
- Fluro colourway for better visibility
- Hook and loop fastening
- Available in one size



1

1. Yellow 200

# FLURO LEAD

RDE015



## Size Single Size

- Fluro colourway for better visibility
- Hardwearing materials with durable steel release hook
- 120cm length



1. Yellow 200

# LED DOG COLLAR

RDE035



## Size Single Size

- Hardwearing collar with Stainless Steel D ring and quick release buckle
- 2 sizes available - 30-55cm, 45-70cm
- Fluorescent colourway for better visibility
- 2 light settings - high & low



1. Fluro 0M0

# REFLECTIVE DOG HARNESS

RDE002



## Size S-L

- More comfortable than a lead as pulling load is spread across the body
- Durable top handle for close control & Steel D ring for lead connection
- Adjustable strap ensures a snug fit
- 3 sizes available (based on chest size) - 40-45cm, 55-65cm, 75-100cm



1. Red 100  
2. Black 800  
3. Azalia 51Q

# COMFORT DOG COLLAR

RDE005



## Size 30-55cm, 45-70cm

- Hardwearing collar with Stainless Steel D ring and quick release buckle
- 2 sizes available - 30-55cm, 45-70cm



1. Red 100  
2. Black 800  
3. Azalia 51Q  
4. Oxford Blue 15

# EXTENDING DOG LEAD

RDE019



## Size Single Size

- Hardwearing materials with durable steel release hook
- Stop release button to safely control your dogs movement
- Suitable for dogs up to 20kg in weight



1. Black 800
2. Oxford Blue 15

# JOGGING LEAD

RDE016



## Size Single Size

- Shock absorbing design helps protect against sudden movements
- Reflective trim for walking in low light
- Hardwearing materials with durable steel release hook
- Waist belt with attachable dog lead for hands free running



1. Black 800
2. Azalia 51Q

# REFLECTIVE SHOCK DOG LEAD 120CM

RDE006



## Size Single Size

- Shock absorbing design helps protect against sudden movements
- Reflective trim for walking in low light
- Hardwearing materials with durable steel release hook
- 120cm length



1. Red 100
2. Black 800
3. Azalia 51Q
4. Oxford Blue 15

# REFLECTIVE DOG LEAD 120CM

RDE007



## Size Single Size

- Reflective trim for walking in low light
- Hardwearing materials with durable Steel release hook
- 120cm length



1. Red 100
2. Black 800
3. Azalia 51Q
4. Oxford Blue 15



# PRINTED DOG COLLAR

RDE033



- Hardwearing collar with Stainless Steel D ring and quick release buckle
- 2 sizes available - 30-55cm, 45-70cm



- 1. Black/Grey Geometric Print **802**
- 2. Blue/Pink Geometric Print **K96**

# PRINTED DOG LEAD 120CM

RDE034



- Hardwearing materials with durable steel release hook
- 120cm length



- 1. Black/Grey Geometric Print **802**
- 2. Blue/Pink Geometric Print **K96**

# METAL LEAD

RDE018



- Hardwearing materials with durable steel release hook
- 120cm length



- 1. Misc. **052**

# DOG MATTRESS

RDE038



- Machine washable cover
- Hollow fibre fill for maximum comfort and warmth
- Durable non-slip base fabric
- 88 x 66cm



- 1. Brown **700**

## DOG BED

RDE037



- Hollowfibre fill for maximum comfort and warmth
- Durable non-slip base fabric
- 55 x 44 x 12cm (Small), 70 x 55 x 15cm (Medium), 80 x 64 x 18cm (Large)



1. Navy Check 025

## PACK-AWAY DOG BOWL

RDE011



- Perfect for eating or drinking whilst on the go
- Packs away easily into coat pocket or backpack
- Hardwearing, waterproof fabric
- 2L capacity



1. Blue 500  
2. Azalia 51Q

## DOG TRAVEL BOTTLE

RDE027



- 0.75L capacity
- Folds for compact size
- Ideal for travelling with your pet



1. Black 800

## CAR SEAT COVER

RDE023



- Hardwearing polyester fabric
- Secures to the front and back seats of most cars
- 146 x 146cm
- Ideal for travelling with your pet



1. Black 800

## DOG TOWEL

RDE024



- Lightweight and compact
- Dries 4x quicker than a standard towel
- Treated with anti-bacterial formula to keep clean and fresh
- 160 x 80cm



1. Black 800

## TUG-OF-WAR TOY

RDE009



- Extremely hardwearing; perfect for playing and chewing



1. N/A 0SZ

## TAIL WAGGER TOY

RDE010



- Extremely hardwearing; perfect for playing and chewing



1. N/A 0SZ

## TENNIS BALL ROPE WAGGER

RDE020



- Extremely hardwearing; perfect for playing and chewing



1. N/A 0SZ

# FETCH BALL LAUNCHER

RDE012



- Launch the ball even further for the ultimate game of fetch
- Fetch ball included
- Lightweight and durable



1. Blue 500

# FETCH BALL SET

RDE008



- Perfect for playing fetch with the Regatta Fetch Ball Launcher
- 6cm diameter
- 4 per pack



1. N/A 0SZ

# LATEX SQUEAKER

RDE022



- Extremely hardwearing; perfect for playing and chewing



1. Blue 500  
2. Pink 130

# VINYL SQUEAKER

RDE021



- Extremely hardwearing; perfect for playing and chewing



1. Basketball 686  
2. Football 684  
3. Tennis Ball 685

# DOG TETHER

RCE055



- Strong and durable steel construction
- Can be used in most ground types



1. N/A 0SZ

# BIODEGRADABLE BAGS

RDE025



- 20 bags per roll
- Easy carry handles
- Biodegradable



1. Black 800



Every stitch and fibre uses the latest technology to give you the best performance and comfort - waterproof, breathable, moisture wicking and active stretch. In a head to head against the elements, Regatta's all-weather gear wins hands down, every time.

# FABRIC TECHNOLOGIES



ISOTEX STRETCH 5000



ISOTEX STRETCH 10000



ISOTEX STRETCH 15000



ISOTEX STRETCH 20000

## Isotex Stretch 5000 - 20000.

Isotex Stretch fabrics are waterproof, breathable and windproof; the hydrophilic breathable system allows inner moisture vapour to escape. Designed to keep you dry and comfortable outdoors whilst the active fit stretch yarns give greater comfort and movement.



ISOTEX 5000



ISOTEX 8000



ISOTEX 10000



ISOTEX 15000

## Isotex 5000 - 15000.

Isotex 5000 - 15000 fabrics are waterproof, breathable and windproof; the hydrophilic breathable system allows inner moisture vapour to escape. Designed to keep you dry and comfortable outdoors.



ISOTEX



ISOLITE 5000



ISOLITE



HYDRAFORT



ISOFLEX

## Isotex.

With a waterproof hydrostatic head of 3000mm, the waterproof performance keeps the water out whilst the hydrophilic breathability system allows inner moisture vapour to escape.

## Isolite 5000 and Isolite.

A waterproof and breathable lightweight fabric range designed to keep you dry and comfortable outdoors. Isolite 5000 has a hydrostatic head of 5000mm.

## Hydrafort.

Hydrafort fabric is both waterproof and windproof, providing reliable protection from the elements.

## Isoflex.

Isoflex fabric is ideal for high energy outdoor activities with a quick dry, water repellent finish and active fit stretch yarns for greater comfort and movement.



Regatta's technical insulation range offers performance and warmth through a variety of garment fills. From protection in very low temperatures to gear for active cold weather exploring, we provide the best technology for your adventures.



**ATOMLIGHT**

**Atomlight.**

Soft, compressible and super lightweight insulation down to temperatures of -25°C. Water repellent, quick drying and highly breathable for extra comfort.



**DOWN FILL**

**Down Fill.**

Down is a lightweight superior insulation offering excellent warmth to weight ratio.



**HYBRID DOWN FILL**

**Hybrid Down Fill.**

Lightweight dual fill insulation - strategically placed for ultimate thermal efficiency in cold, damp weather conditions.



**ALPACA WOOL**

**Alpaca Wool.**

Alpaca wool blend insulates down to sub zero temperatures and will keep you warm even when wet. Lightweight warmth without bulk, highly breathable for extra comfort and hypoallergenic.



**MERINO TECH WOOL**

**Merino Tech Wool.**

A great weight-to-warmth ratio, Merino wool blend insulates in cold temperatures, regulating your body temperature, dries quickly once wet whilst naturally controlling odour.



**TECHNICAL WOOL MIX**

**Technical Wool Mix.**

Blended fibre knit traps heat close to the body for intuitive temperature and moisture management, keeping you dry and comfortable.



**WOOL LOOK WARMTH**

**Wool Look Warmth.**

Inspired by natural fibres, Wool Look Warmth is designed to optimise comfort and range of motion with thermal efficiency and breathability.



**WARMLOFT**

**Warmloft.**

Premium synthetic down touch insulating technology. A highly compressible, soft-touch warmth without the bulk. Water repellent and quick drying to help reduce odour.



**THERMOGUARD**

**Thermoguard.**

Made up of synthetic fibres which trap the air keeping you warm in cold conditions. Quick drying and easy to care for.



WINDPROOF

Regatta's wind resistant fabric technologies offer guaranteed protection from the elements. Whether you are tackling exposed mountain summits or hiking on blustery trails our ranges provide the best technology for all your outdoor adventures.



**Softshell XPT.**

Water repellent and wind resistant to keep you warm and comfortable during high energy activities. This breakthrough technology enables better breathability whilst the lightweight qualities give greater ease of movement.



**Softshell.**

Water repellent and wind resistant to keep you warm and comfortable during high energy activities.

**OTHER TECHNOLOGIES**



**Coolweave.**

Made from 100% cotton, this fabric is cool to wear due to its airflow construction, drawing heat away from the skin, keeping you comfortable.



**Coolweave Hybrid.**

Coolweave Hybrid fabrics contain a high percentage of cotton fibres. Ideal for the great outdoors, they give a natural cooling effect next to the skin.



**Symmetry.**

Comfortable and practical to wear, perfect for the outdoors with an anti-pill finish making it durable and long lasting. Quick drying, easy to care for and super soft to provide extra comfort.



**Thermal Balance Plus.**

Provides outstanding warmth to weight ratio, ideal for layering garments. The anti-pill fabric makes it soft and durable - quickly wicks moisture away keeping you comfortable and free from windchill.



**Extol Stretch.**

Regatta's warm backed stretch fabric technology is ideal for high energy outdoor activities, with a quick drying finish to minimise rain impact and provide protection from windchill.

For further information on our technologies visit [www.regatta.com](http://www.regatta.com)



# MEN'S SIZING CHART

All our products are designed to enhance every adventure you embark on, that's why we take care to make sure they fit to you rather than you fitting the product. Our size chart below shows a guideline to the standard body measurements that we work to. Measuring your body accurately will help to determine what size Regatta kit is best for you.

Men's Body Measurements	XXS	XS	S	M	L	XL	XXL	XXXL	XXXXL	XXXXXL	XXXXXXL
<b>Men's Sizing: Jackets / Body Warmers / Fleecees / Shirts &amp; T-Shirts</b>											
(Chest) size inches	32-34	35-36	37-38	39-40	41-42	43-44	46-48	49-51	52-54	55-57	58-60
(Chest) size cm's	81-86	89-91.5	94-96.5	99-101.5	104-106.5	109-112	117-122	124.5-129.5	132-137	140-145	147-152.5
EU Size Conversion	44	46	48	50	52-54	56	58-60	62	64	66	68
USA Conversion	34	36	38	40	42	44	46	48	50	52	54

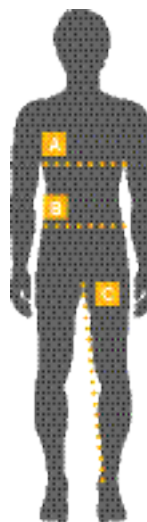
<b>Men's Waist Sizing: Trousers &amp; Shorts</b>														
(Waist) size inches	26	28	30	32	33	34	36	38	40	42	44	46	48	50
(Waist) size cm's	66	71	76	81	84	86.5	91.5	96.5	101.5	106.5	111.5	117	122	127
<b>Men's Waist Sizing Conversions</b>														
Austria, Switzerland, Germany, Netherlands, Sweden, Italy, Belgium,	40	42	44	46	48	50	52	54	56	58	60	62	64	66
Spain, France, Portugal	34	36	38	40	42	44	46	48	50	52	54	56	58	60
USA	26	28	30	32	33	34	36	38	40	42	44	46	48	50

<b>Men's Inside leg Measurements</b>														
(Short) inches	30	30	30	30	30	30	30	30	30	30	30	30	30	30
(Regular) inches	32	32	32	32	32	32	32	32	32	32	32	32	32	32
(Long) inches	34	34	34	34	34	34	34	34	34	34	34	34	34	34

Men's Overtrousers	XXS	XS	S	M	L	XL	XXL	XXXL	XXXXL
(Waist) size inches	26-28	28-30	30-32	33-34	36-37	38-40	42-44	46-48	50-52
(Waist) size cm's	66-71	71-76	76-81	84-86	92-94	97-102	107-112	117-122	127-132
<b>Size Conversions</b>									
Austria, Switzerland, Germany, Netherlands, Sweden, Italy, Belgium	40-42	42-44	44-46	48-50	50-52	54-56	58-60	62-64	64-66
Spain, France, Portugal	34-36	36-38	38-40	42-44	44-46	48-50	52-54	56-58	60
USA	26-28	28-30	30-32	33-34	36-37	38-40	42-44	46-48	50-52

## Regatta Measuring Guide

The fit of your clothes depends on the cut/style and design of your garment. Our garments will vary in actual size as we allow for ease of fabric over the body. Measure your body accurately to determine what size clothes you would be best buying.



- A CHEST:** Measure the chest at the fullest part placing the tape under the arms.
- B WAIST:** Measure around the waist at the height at which you would normally wear your trousers.
- C INSIDE LEG:** Measure from the crotch to where your trouser leg is normally worn at the ankle.

# WOMEN'S SIZING CHART

Women's Body Measurements	6	8	10	12	14	16	18	20	22	24	26	28	30	32	34	36
<b>Women's Sizing: Jackets / Body Warmers / Fleece / Shirts / T-Shirts &amp; Trousers</b>																
(Bust) size inches	30	32	34	36	38	40	43	45	48	50	52	54	56	58	60	62
(Bust) size cm's	76	81	86	92	97	102	109	114	122	127	132	137	142	147	152	158
(Waist) size inches	23	25	27	29	31	33	36	38	41	43	45	47	49	51	53	55
(Waist) size cm's	58	63	68	74	79	84	91	96	104	109	114	119	124	129	135	140
(Hip) size inches	33	35	37	39	41	43	45	47	50	52	54	57	59	61	63	65
(Hip) size cm's	84	89	94	99	104	109	114	119	127	132	137	145	150	155	160	166

Size Conversions																
Austria, Switzerland, Germany, Belgium, Netherlands, Sweden	32	34	36	38	40	42	44	46	48	50	52	54	56	58	60	62
Spain, France, Portugal	34	36	38	40	42	44	46	48	50	52	54	56	58	60	62	64
Italy	38	40	42	44	46	48	50	52	54	56	58	60	62	64	66	68
USA	XXS/2	XS/4	S/6	M/8	L/10	XL/12	XXL/14	3XL/16	4XL/18	5XL/20	6XL/22	7XL/24	8XL/26	9XL/28	10XL/30	11XL/32
RUS	XXS/38	XS/40	S/42	M/44	L/46	XL/48	XXL/50	3XL/52	4XL/54	5XL/56	6XL/58	7XL/60	8XL/62	9XL/64	10XL/66	11XL/68

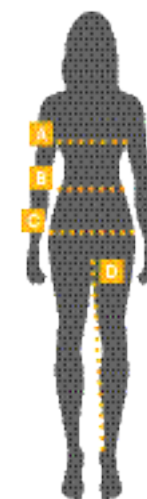
Women's Inside leg Measurements																
(Short) inches	29	29	29	29	29	29	29	29	29	29	29	29	29	29	29	29
(Regular) inches	31	31	31	31	31	31	31	31	31	31	31	31	31	31	31	31
(Long) inches	33	33	33	33	33	33	33	33	33	33	33	33	33	33	33	33

Women's Overtrousers	S	M	L	XL
(Waist) size inches	26-28	30-32	34-36	38
(Waist) size cm's	66-71	76-81	86-92	97

Size Conversions				
Austria, Switzerland, Germany, Netherlands, Sweden, Belgium	34-36	38-40	42-44	46
Spain, France, Portugal	36-38	40-42	44-46	48
Italy	40-42	44-46	48-50	52
USA	S/4-6	M/8-10	L/12-14	XL/16
RUS	S/40-42	M/44-46	L/48-50	XL/52

## Regatta Measuring Guide

The fit of your clothes depends on the cut/style and design of your garment. Our garments will vary in actual size as we allow for ease of fabric over the body. Measure your body accurately to determine what size clothes you would be best buying.



### A BUST:

Measure around the fullest part of your bust.

### B WAIST:

Measure around the waist at the height at which you would normally wear your trousers.

### C HIP:

Measure around the fullest part of your hip.

### D INSIDE LEG:

Measure from the crotch to where your trouser leg is normally worn at the ankle.

# KIDS SIZING CHART

Little Adventurers Unisex Size Chart

Age/Months	Height	EU\RUS Size Conversion
6 - 12 Months	74 - 80 cm	80
12 - 18 Months	80 - 86 cm	86
18 - 24 Months	86 - 92 cm	92
24 - 36 Months	92 - 98 cm	98
36 - 48 Months	98 - 104 cm	104
48 - 60 Months	104 - 110 cm	110
60 - 72 Months	110 - 116 cm	116

Kids Unisex Size Chart (Tops)

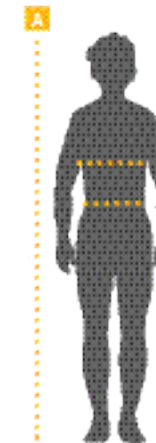
Age/Years	Height	Chest	EU\RUS Size Conversion	USA Sizes
2 Years	92 cm	53 - 55 cm	92	2
3 - 4 Years	98 - 104 cm	55 - 57 cm	104	3-4
5 - 6 Years	110 - 116 cm	59 - 61 cm	116	5-6
7 - 8 Years	122 - 128 cm	63 - 67 cm	128	7-8
9 - 10 Years	135 - 140 cm	69 - 73 cm	140	9-10
11 - 12 Years	146 - 152 cm	75 - 79 cm	152	11-12
13 Years	153 - 158 cm	82 cm	158	13
14 Years	164 - 170 cm	86 cm	164	14
15 - 16 Years	170 - 176 cm	89 - 92 cm	176	15-16

Kids Unisex Size Chart (Legwear)

Age/Years	Height	Waist	EU\RUS Size Conversion	USA Sizes
2 Years	92 cm	52 - 53 cm	92	2
3 - 4 Years	98 - 104 cm	53 - 54 cm	104	3-4
5 - 6 Years	110 - 116 cm	55 - 57 cm	116	5-6
7 - 8 Years	122 - 128 cm	58 - 60 cm	128	7-8
9 - 10 Years	135 - 140 cm	61 - 64 cm	140	9-10
11 - 12 Years	146 - 152 cm	65 - 66 cm	152	11-12
13 Years	153 - 158 cm	69 cm	158	13
14 Years	164 - 170 cm	73 cm	164	14
15 - 16 Years	170 - 176 cm	76 - 79 cm	176	15-16

## Regatta Kids General Sizing Guidelines

Our children's clothes are designed to allow room for growth. Sometimes the height measurement is a better guide than the age in choosing the correct size for your child.



### A HEIGHT:

Measure from a level floor to the top of the head.

### B CHEST:

Measure the chest at the fullest part placing the tape under the arms.

### C WAIST:

Measure around the waist at the height at which you would normally wear your trousers.

# HATS



**A** = Place the tape around your head across the mid-forehead, completely circling your head. Hold the tape firmly, but not too tightly. Measure your head exactly where the hat will sit. If your measurement falls between sizes, choose the next largest size.

Men's Sizing				
Head Circumference Sizing	S/M	L/XL	One Size	
Head Circumference - cms	56/57cm	58/59cm	57/58cm	
Women's Sizing				
Head Circumference Sizing	S/M	L/XL	One Size	
Head Circumference - cms	54/55cm	56/57cm	55/56cm	
Unisex - Adults Sizing				
Head Circumference Sizing	S/M	L/XL	One Size	
Head Circumference - cms	55/56cm	57/58cm	56/57cm	
Kids Sizing				
Head Circumference Sizing	1-3 Years	4-6 Years	7-10 Years	11-13 Years
Head Circumference - cms	52cm	53cm	54cm	55cm

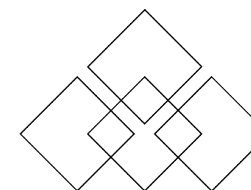
# GLOVES



To check hand size against glove size you need to measure your palm circumference. You should use your dominant hand e.g. the right if you are right handed.

**A** = Measure in inches or centimetres with a tape around your palm at the fullest point (excluding thumb).

Men's Sizing				
Glove/Hand Sizing	S	M	L	XL
Palm Circumference - inches	7"	8"	9"	10"
Palm Circumference - cms	18cm	20.5cm	23cm	25.5cm
Women's Sizing				
Glove/Hand Sizing	S	M	L	XL
Palm Circumference - inches	6"	7"	8"	9"
Palm Circumference - cms	15.5cm	18cm	20.5cm	23cm
Kids Sizing				
Glove/Hand Sizing	1-3 Years	4-6 Years	7-10 Years	11-13 Years
Palm Circumference - inches	5"	5.5"	6"	6.5"
Palm Circumference - cms	12.5cm	14cm	15.5cm	16.5cm



## THE HONESTY PROJECT

The Regatta group is a family business with a strongly believed set of values.

We deeply believe that honesty, courtesy and respect are critical in all the decisions we make, wherever that may be – with customers, colleagues and the workers in our factories.

We set up the Honesty Project to focus on creating fantastic product, thoughtfully engineered for the great outdoors, and in doing so will hopefully enhance the lives of those touched by our business. We're not perfect yet but we're striving to be committed to honesty and transparency in everything we do, every step of the way.

### RESPONSIBLE SOURCING



We have been members of Ethical Trade Initiative since 2012. ETI brings together brands, retailers, suppliers, unions and NGO's to improve conditions for workers worldwide. We have recently been awarded Achiever status which makes us one of ETI's top companies. We impact 32000 workers in 95 factories in 7 countries.

### RESPONSIBLE SOURCING



Our RHEP project teaches female health, hygiene and nutrition. By the end of 2017 we will have trained over 7000 workers, who in turn teach neighbours and friends. We do this through a system of peer educators; teaching workers to be health educators who then cascade their learning.



For over 10 years, we have been funding a primary school in our garment factory area, with 262 disabled and disadvantaged children, aged from 4 to 14. As well as essential building refurbishment, we are also reviewing the curriculum with Save the Children, where we plan to introduce a numeracy and literacy booster scheme and a programme to help educate the parents. Key to our success is that we provide a balanced meal and milk for every child, every day. We are proud of the positive impact we have made to over 3000 families to date.

### THE ENVIRONMENT

Understanding the impact our activities have on our natural environment is important. It is imperative we reduce our harmful effects where possible. We have a detailed business plan, with key dates and targets. These include reducing CO2 emissions, reducing water usage, waste and chemical management, using more sustainable packaging and component parts and switching to "blue sign" certified fabrics wherever possible. We are 100% compliant with all European legislation regarding banned substances and are also working towards a reduction of PFC's by 2020.

Joining the Microfibre Consortium allows us to work with experts to find ways of reducing fibre loss which is ultimately contaminating our water systems. As a licensee for the Higgs Index, this will enable us to benchmark our sustainability efforts within the industry, encouraging us to continuously raise the bar.

**Men's**

MW310	Active Packaway Overtrousers II	35
RMA021	Thompson	30
RMA148	Stanton II	29
RMA192	Hedman II	29
RMA212	Montes	30
RMA306	Tafton	28
RMA307	Kenger	29
RMA333	Garrian	45
RMA351	Torrens	28
RMA371	Cranston	45
RMA372	Westbrook	43
RMA373	Zane	44
RMA375	Paavo	44
RMA377	Branton II	46
RMA378	Earvin	47
RMA379	Gerado	46
RMA380	Elgrid	48
RMA382	Lochran	47
RMA389	Cayo	45
RMA390	Kalman	47
RMA391	Cartersville VI	26
RMA393	Collumbus VI	27
RMA394	Sheltor Showerproof Fleece	26
RMA395	Vorro	28
RMA396	Colbeck	27
RMA397	Luzon II	27
RMA398	Zavid	44
RMA399	Cormac	46
RMA405	Kinver	25
RMA406	Kestor	25
RMB052	Tobias II B/W	30
RMB053	Bradwell II B/W	25
RMB079	Radburn B/W	42
RMB085	Lankin II	24
RMB088	Hadly B/W II	42
RMB089	Lander B/W	41
RMB090	Halton B/W III Hybrid	18
RMB096	Freezeway B/W	20
RMJ117	Geo Softshell Trousers II	34
RMJ161	Delph Trousers	50
RMJ182	Delph Lined Trousers	50
RMJ189	Fenton Trousers	34
RMJ191	Dayhike Trousers III	33
RMJ212	Mountain Trousers	33
RMJ216	Highton Trousers	34
RMJ225	Questra II Trousers	33
RML107	Cera III	24
RML153	Arec II	23
RML169	Tarvos II	22
RML173	Carby	24
RML179	Hentana	21
RML180	Conlan	43
RML181	Cronan	43
RML182	Hewitts V	21
RML183	Carpo II Hybrid	22
RML184	Haska Hybrid	22
RML185	Foley Hybrid	23
RML186	Yare II	23
RMN122	Whitehill	19
RMN127	Andreson IV Hybrid	20
RMN128	Bestla Hybrid	21
RMN130	Angaros II	40
RMN132	Arnau	40
RMN133	Lander	41
RMN134	Irwin	41
RMN136	Halton III	18
RMN137	Nevado III	19
RMN139	Orton	19
RMN140	Freezeway	20
RMP235	Salinger	38
RMP237	Hebson	39
RMP247	Fabens II	12
RMP254	Tarren	13
RMP260	Aalto	37
RMP261	Erving	37
RMP264	Phyllon	39
RMP265	Sterlings	39
RMP267	Ranier	38
RMP268	Sacramento V	7
RMP269	Glyder V	7
RMP270	Wentwood IV	8
RMP271	Northton III	8
RMP272	Volter Shield	9
RMP273	Highside IV	10
RMP274	Garforth III	11
RMP275	Hackber	12
RMP276	Largo II	11
RMP277	Langa Stretch	10
RMP278	Ralston	38
RMP279	Telmar III	9
RMP281	Thornridge II	13
RMS130	Tygo	48
RMS132	Lazare	48
RMT171	Karter	49
RMT172	Yonder	32
RMT182	Talcott II	49
RMT183	Tornell	31
RMT195	Kiro	49
RMU027	Beru	31
RMU034	Zimba	31
RMU038	Beckley Set	32
RMW149	Men's Pack-It Overtrousers	16
RMW201	Matt	15
RMW244	Chandler O/Trousers III	35
RMW279	Birchdale	14
RMW281	Pack-It Jacket III	16
RMW283	Lyle IV	15
RMW305	Calderdale III	14
RMW310	Boyer	40
W308	Stormbreak Overtrousers	17
W408	Stormbreak Jacket	17
<b>Women's</b>		
RWA027	Sweethart	70
RWA183	Floere II	69
RWA240	Women's Montes	70
RWA294	Kizmit II	90
RWA317	Women's Tafton	68
RWA318	Women's Kenger	69
RWA323	Fayona	91
RWA324	Solenne	91
RWA337	Raizel	88
RWA351	Bernice	89
RWA362	Women's Torrens	68
RWA390	Ranata	86
RWA392	Ruslana	86
RWA394	Talya	87
RWA395	Zohara	87
RWA396	Benedetta	88
RWA397	Zumar	87
RWA398	Haniska	89
RWA399	Halona	89
RWA401	Kaylynn	90
RWA402	Quintia	88
RWA403	Zyranda	91
RWA404	Roxie	86
RWA405	Willowbrook VI	67
RWA406	Pemble Hybrid	67
RWA407	Laney VI	68
RWA409	Halia	69
RWA424	Women's Kinver	66
RWA425	Women's Kestor	67
RWB053	Sweetness II B/W	70
RWB090	Wynter B/W	84
RWB091	Benedetta B/W	84
RWB092	Women's Halton B/W II Hybrid	59
RWB095	Women's Freezeway B/W	61
RWJ113	Women's Geo Softshell Trousers II	74
RWJ177	Women's Fenton	75
RWJ181	Women's Dayhike Trousers III	73
RWJ193	Pentre Stretch Trousers	74
RWJ195	Querina Chino	94
RWJ205	Darika Trousers	93
RWJ207	Women's Mountain Trousers	73
RWJ215	Women's Questra II	73
RWJ217	Women's Highton Trousers	74
RWL104	Connie III	66
RWL154	Women's Arec II	65
RWL160	Women's Carpo Hybrid	63
RWL166	Women's Yare	65
RWL172	Women's Carby	66
RWL175	Adelphia	85
RWL176	Women's Hentana	63
RWL177	Charley	85
RWL178	Desoto V	63
RWL180	Women's Haska Hybrid	64
RWL181	Niosa	65
RWL183	Cinley Hybrid	64
RWL184	Hawnby	64
RWN121	Kallie	83
RWN123	Fermina II	83
RWN134	Women's Andreson IV Hybrid	62
RWN135	Women's Bestla Hybrid	62
RWN136	Women's Whitehill	60
RWN141	Patchouli	82
RWN142	Whitley	82
RWN143	Cyanne	84
RWN146	Women's Halton III	59
RWN148	Andel	60
RWN149	Metallia II	60

RWN151	Women's Freezeway.....	61
RWP245	Blanchet II .....	55
RWP260	Romina.....	80
RWP265	Mylee .....	81
RWP266	Bergonia .....	80
RWP278	Premilla II 3-In-1 .....	53
RWP279	Women's Tarren.....	55
RWP280	Safiyya .....	77
RWP281	Lexia .....	78
RWP282	Lizbeth .....	78
RWP283	Serleena .....	79
RWP284	Braelynn.....	79
RWP287	Frostine .....	78
RWP288	Carletta IV .....	52
RWP289	Louisiana V .....	52
RWP290	Women's Wentwood IV.....	53
RWP291	Calyn III.....	53
RWP292	Voltera.....	77
RWP293	Women's Highside IV .....	54
RWP294	Corvelle II .....	54
RWP296	Myla .....	81
RWS106	Makala .....	92
RWT161	Women's Yonder .....	72
RWT162	Frayda .....	93
RWT172	Women's Tornell .....	71
RWT186	Flordelis.....	92
RWU027	Women's Beru .....	71
RWU031	Women's Zimba.....	71
RWU035	Women's Beckley Set.....	72
RWW158	Pack-It Overtrousers .....	58
RWW264	Amelie Overtrousers III.....	75
RWW271	Daysha .....	57
RWW300	Women's Birchdale.....	56
RWW304	Corinne IV.....	57
RWW305	Women's Pack-It Jacket III.....	58
RWW326	Women's Calderdale III .....	56
RWW330	Bronya .....	81

**Kids**

RKA147	King II .....	104
RKA148	Hot Shot II .....	105
RKA163	Lovely Jubblie.....	116
RKA224	Loco.....	105
RKA225	Pira.....	104
RKA263	Dissolver II .....	103

RKA267	Jader.....	103
RKA268	Keera .....	114
RKA269	Keyon .....	115
RKA270	Melor.....	115
RKA274	Kacie.....	116
RKA275	Meyer.....	114
RKA276	Kerala .....	114
RKA277	Habiba .....	115
RKA279	Kenya.....	113
RKA281	Joely .....	118
RKA282	Elter .....	102
RKA283	Marlin VI.....	104
RKA311	Thirl.....	103
RKB051	Junior Freezeway B/W.....	100
RKJ018	Softshell Trousers .....	107
RKJ064	Dayhike Stretch Trousers II .....	107
RKJ099	Tech Mountain Trousers.....	107
RKL084	Rivendale.....	102
RKL085	Oberon.....	102
RKL091	Astrox II.....	101
RKL092	Tazer .....	101
RKN083	Kielder Hybrid III .....	101
RKN084	Panya.....	118
RKN085	Bluebelle.....	112
RKN086	Pasco.....	113
RKN087	Westhill .....	113
RKN089	Lofthouse III .....	99
RKN090	Junior Freezeway .....	100
RKP155	Splash III.....	119
RKP191	Mudplay III .....	118
RKP192	Printed Splat II .....	119
RKP200	Proktor Parka .....	109
RKP201	Haloma Parka.....	109
RKP202	Kelby .....	110
RKP203	Palomina.....	110
RKP204	Selwyn.....	111
RKP205	Hydrate IV 3-In-1 .....	96
RKP207	Aptitude IV .....	96
RKP208	Volcanics III.....	97
RKP209	Braylee .....	111
RKP210	Perry .....	111
RKP211	Hurdle III.....	97
RKT099	Berley .....	106
RKT100	Wendell.....	116
RKU009	Beeley Set .....	106

RKW110	Kids Pack-It Overtrousers .....	98
RKW156	Puddle IV .....	119
RKW164	Lever II .....	97
RKW213	Kids Pack-It Jacket III.....	98
RKW235	Jaidyn .....	112
RKW236	Akello .....	112
W808	Kids Stormbreak Overtrousers.....	99
W908	Kids Stormbreak Jacket.....	98

**Adults Accessories**

RMC044	Kingsdale Hat .....	136
RMC058	Adults Multitube II .....	139
RMC059	Padded Igniter Hat .....	135
RMC061	Steadfast Neck Gaitor III .....	140
RMC070	Balton Beanie.....	124
RMC075	Balton Scarf .....	124
RMC082	Harrel Hat II.....	122
RMC083	Davion Hat II .....	123
RMC084	Halian Trapper Hat II.....	121
RMC085	Cadell Cap II .....	122
RMG009	Touchtip Stretch Gloves .....	138
RMG010	Softshell Gloves.....	137
RMG011	Extol Gloves.....	138
RMG013	Men's Transition Waterproof Gloves .....	137
RMG014	Kingsdale Gloves .....	136
RMG017	Men's Gerson Gloves.....	123
RMG018	Balton Gloves .....	124
RMG120	Davion Gloves .....	123
RUC039	Konex Webbing Belt .....	140
RUC044	Brevis Beanie .....	134
RUC045	Rafter Beanie .....	135
RUC049P	Adult Active Pack Multitube II .....	139
RUC050P	Adults Outdoor Pack Multitube III .....	139
RUC051	Sampson Wax Hat.....	121
RUG005	Quilted Gloves .....	137
RUG006	Brevis Gloves.....	134
RWC091	Luz Hat .....	128
RWC093	Multimix Scarf II .....	131
RWC097	Active Headband .....	136
RWC098	Rushley Hat .....	134
RWC099	Lovella Hat II .....	127
RWC100	Frosty Hat III.....	126
RWC101	Harleth Snood II.....	125
RWC102	Frosty Scarf III.....	126
RWC103	Peggie III .....	132

RWC104	Agata Headband .....	130
RWC106	Floy Chullo .....	125
RWC107	Lorelai Hat .....	125
RWC108	Lovella Scarf .....	127
RWC109	Azni Hat.....	129
RWC110	Kaena Hat.....	128
RWC111	Kaena Scarf.....	129
RWC114	Eliska Ear Muffs II .....	130
RWC115	Corvina Hat & Mitt Set II .....	132
RWC116	Mix & Match Pom Pom .....	133
RWC117	Mix & Match Keyring .....	133
RWG042	Luz Gloves.....	128
RWG043	Gelsey Gloves .....	131
RWG044	Multimix Gloves II .....	131
RWG045	Frosty Gloves III .....	126
RWG046	Luxury Fur Wristlets .....	130
RWG047	Azni Gloves .....	129
RWG050	Rushley Gloves.....	135

**Kids' Accessories**

RKC088	Taz Hat II .....	146
RKC153	Fallon Hat .....	144
RKC156	Ezora Ear Muffs.....	144
RKC170	Tavis Trapper Hat II .....	142
RKC171	Luminosity Hat III .....	144
RKC173	Animally Hat III .....	145
RKC174	Hedy Lux Hat II .....	143
RKC176	Balzak Beanie II .....	142
RKC177	Davin Hat II.....	142
RKC178	Cassiana Chullo .....	142
RKC182	Bitsie Hat .....	143
RKC185	Hedy Lux Scarf .....	143
RKC186	Banwell Beanie .....	146
RKC187	Bitsie Snood.....	143
RKG024	Kids Taz Gloves II .....	147
RKG031	Kids Grippy Gloves.....	147
RKG038	Kids Spatter Mitts III.....	146
RKG040	Kids Arie II W/P Gloves .....	147
RKG043	Fallon Gloves .....	145
RKG045	Merle Gloves .....	145
RKG046	Animally Mitts III.....	145
RKG047	Luminosity Gloves .....	144
RKG048	Banwell Gloves.....	146

**Dog Accessories**

RCE055 Dog Tether .....157  
 RDE002 Reflective Dog Harness .....151  
 RDE005 Comfort Dog Collar.....151  
 RDE006 Reflective Shock Dog Lead 120cm .....152  
 RDE007 Reflective Dog Lead 120cm.....152  
 RDE008 Fetch Ball Set .....156  
 RDE009 Tug-Of-War Toy.....155  
 RDE010 Tail Wagger Toy .....155  
 RDE011 Pack-Away Dog Bowl.....154  
 RDE012 Fetch Ball Launcher .....156  
 RDE013 Reflective Vest.....150  
 RDE015 Fluro Lead.....151  
 RDE016 Jogging Lead .....152  
 RDE018 Metal Lead .....153  
 RDE019 Extending Dog Lead .....152  
 RDE020 Tennis Ball Rope Wagger .....155  
 RDE021 Vinyl Squeaker.....156  
 RDE022 Latex Squeaker.....156  
 RDE023 Car Seat Cover .....154  
 RDE024 Dog Towel .....155  
 RDE025 Biodegradable Bags.....157  
 RDE027 Dog Travel Bottle.....154  
 RDE028 Addison Dog Jacket .....149  
 RDE029 Aldo Dog Coat.....149  
 RDE030 Shep Dog Jacket .....150  
 RDE031 Odie Dog Coat .....150  
 RDE033 Printed Dog Collar .....153  
 RDE034 Printed Dog Lead 120cm.....153  
 RDE035 Led Dog Collar .....151  
 RDE037 Dog Bed.....154  
 RDE038 Dog Mattress .....153

# SYMBOLS



Indicates new products for Autumn/Winter 2019.

● 2. Ash 611

Indicates new colours for Autumn/Winter 2019 on existing lines.



Products can be mixed and matched within the range.



Equestrian-friendly.



Active texture.



Wind resistant.



Longer length.



Showerproof.



Reflective.



Fleece lined.

## HEAD OFFICE

### Regatta Ltd

Basecamp,  
Mercury Way,  
Dumplington,  
Urmston,  
Manchester M41 7RR

Tel: +44 (0) 161 749 1200  
U.K. Sales Direct: 0844 811 2322  
Fax: +44 (0) 161 749 1210  
E-mail: [salesupport@regatta.com](mailto:salesupport@regatta.com)

## REGIONAL SHOWROOMS

### Belfast

Unit 21, 40 Montgomery Road,  
Belfast BT6 9HL  
Tel: 02890 791441

### Glasgow

Unit 3, The Square,  
95 Morrison Street,  
Glasgow G5 8BE  
Tel: 0141 429 3752

### Newcastle

Unit 4, Apex Business Village,  
Northumberland Business Park,  
Annitsford,  
Cramlington NE23 7BF  
Tel: 0191 250 2089

### Warwickshire

2 Henley Court,  
Henley-in-Arden,  
Warwickshire B95 5BA  
Tel: 01564 794356

### Milton Keynes

The Hobble  
Hayfield Business Park  
Milton Keynes, MK17 8HL  
Tel: +44 (0) 7768116860  
E-mail: [jrafferty@regatta.com](mailto:jrafferty@regatta.com)

## EUROPEAN OFFICES

### Ireland Office

**Cork**  
25 Westside Centre,  
Model Farm Road, County Cork T12 EH21  
Tel: +353 21 4340344  
E-mail: [info@regatta.ie](mailto:info@regatta.ie)

### Regatta Eastern Europe Office

Regatta Polska Sp. z o.o.  
ul.Częstochowska 5  
32-085 Modlnica  
Tel: +48 12 291 91 12  
E-mail: [easterneurope@regatta.com](mailto:easterneurope@regatta.com)

### Regatta Belux

Eklipse Agency bvba  
Baalhoek 50 Bus 1  
1853 Strombeek-Bever  
Belgium  
Tel: +32 2 267 09 03  
Fax: +32 2 267 87 97  
E-mail: [belux@regatta.com](mailto:belux@regatta.com)

### Regatta Spain

Ctra Fuencarral N°44  
Complejo Tribeca  
Edificio 7, Lofts 7,8,9  
28108 Alcobendas - Madrid  
Tel: +34 91 804 96 16  
Fax: +34 91 804 57 03  
E-mail: [spain@regatta.com](mailto:spain@regatta.com)

### Regatta France

47 Bis Rue Des Vinaigriers  
75010 Paris  
Tel: +33 (0) 1 40220822  
Fax: +33 (0) 1 40220848  
E-mail: [france@regatta.com](mailto:france@regatta.com)

### Andorre

25 Allée Du Moura  
Zone de la Négresse  
Biarritz 64200  
Tel: +33 (0) 6 10802685  
E-mail: [csantamaria@regatta.com](mailto:csantamaria@regatta.com)

### Regatta Germany/Austria/Switzerland

Regatta GmbH  
Reichenberger Straße 1  
D-84130 Dingolfing  
Tel: +49 (0) 8731 3191-0  
Fax: +49 (0) 8731 319368  
E-mail: [germany@regatta.com](mailto:germany@regatta.com)

### Regatta Netherlands

Sportbusinesscenter C25  
Plesmanstraat 1  
3833 LA Leusden  
The Netherlands  
Tel: +31 (0) 33 466 99 50  
E-mail: [nederland@regatta.com](mailto:nederland@regatta.com)

### Regatta Italy

Via Bassanese 61/1  
31044 Montebelluna (TV)  
Italy  
Tel. Ufficio Commerciale +39 0423 614140  
+39 0423 22930  
Tel. Ufficio Amministrazione: 800 969 200  
Fax: +39 0423 247289  
E-mail: [italy@regatta.com](mailto:italy@regatta.com)

### Regatta Denmark

ATS Nordics ApS  
Greve Landevej 140  
DK-2670 Greve  
E-mail: [denmark@regatta.com](mailto:denmark@regatta.com)

### Regatta Israel

10 Plaut St. Rehovot, 7670620  
Tel: +972-8-9365444  
Fax: +972-8-9365080  
E-mail: [israel@regatta.com](mailto:israel@regatta.com)

### Regatta RUS LLC

Proektiruemiy Proezd 4062, 6/16, 115432  
Business Center "Port Plaza"  
Moscow  
Email: [russia@regatta.com](mailto:russia@regatta.com)

### Regatta Polska sp. z o.o.

Ul. Częstochowska 5  
32-085 Modlnica  
Tel: +48 12 291 91 12  
E-mail: [sprzedaz@regatta.com](mailto:sprzedaz@regatta.com)

### Regatta Czech and Slovakia

Ul. Częstochowska 5  
32-085 Modlnica  
Tel: +48 12 291 91 12  
E-mail: [sprzedaz@regatta.com](mailto:sprzedaz@regatta.com)

## DISTRIBUTORS

### Iceland

Útivist & Sport Ehf  
Tel: 00-354-533-1550  
E-mail: [utivistogsport@utivistogsport.is](mailto:utivistogsport@utivistogsport.is)

### Turkey

And Dayanikli Tüketim Mallari  
Tel: +90 (212) 590 38 38  
E-mail: [info@andoutdoor.com](mailto:info@andoutdoor.com)

### Austria

Handelsagentur Karl Attwenger  
Traunsteinblick 2  
A-4556 Kirchham  
Austria  
Tel: 0043-(0)7619-22066  
E-mail: [attwenger@traunsteinsport.at](mailto:attwenger@traunsteinsport.at)

### Hungary

Wild Sport Kft  
H-1031 Budapest, Öriő u.9  
Hungary  
Tel/Fax: 061-820-0260  
E-mail: [hungary@regatta.com](mailto:hungary@regatta.com)

### Taiwan

Outdoor Active International Co. Ltd  
6F No 128. Xinhua 3rd Rond  
Neihu District  
114 Taipei City  
Taiwan  
Tel: +886/2-2793 8616  
E-mail: [johnling@easy-outdoor.com.tw](mailto:johnling@easy-outdoor.com.tw)

### Croatia/Slovenia/Serbia

Fallax Ltd.  
Nova cesta 152  
10000 Zagreb, Croatia  
Tel: +385 1 4557 845  
Email: [info@regatta.hr](mailto:info@regatta.hr)

### Greece

Polo S.a.S  
62 Zisimopoulou St  
P. Faliro Athens  
Greece  
175 64  
Tel: +30 210 94 28 200  
Fax: +30 210 94 30 188  
Email: [info@polo.gr](mailto:info@polo.gr)

### Location Photography

David Short

### Production

CFH Design

Regatta and Regatta Great Outdoors are registered trade marks of Regatta Ltd.



**REGATTA**   
**GREAT OUTDOORS**

[regatta.com](http://regatta.com)