

## Supporting Information

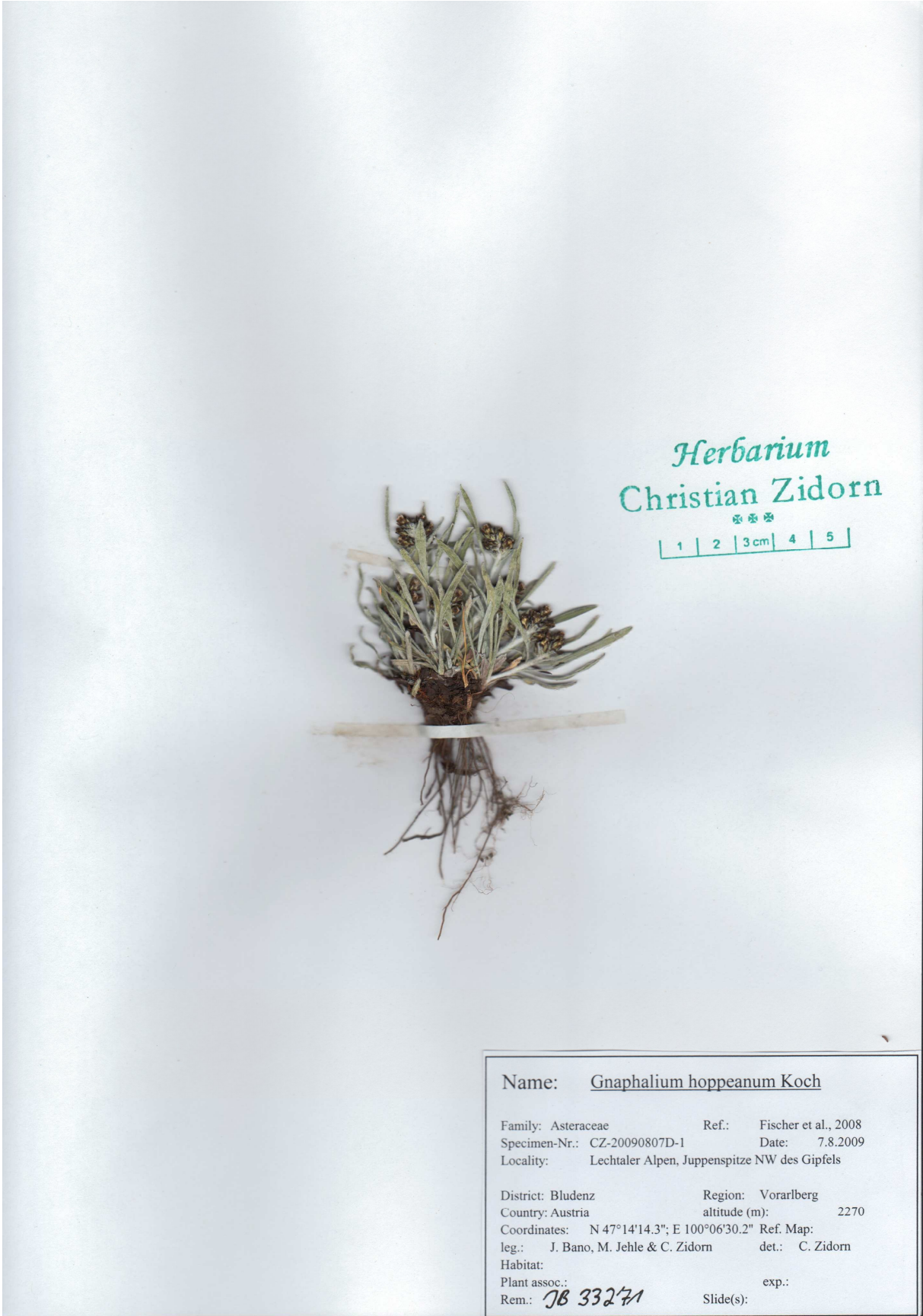
*Rec. Nat. Prod.* 6:3 (2012) 311-315

### Caffeoyl-D-glucaric acid derivatives in the genus *Gnaphalium* (Asteraceae: Gnaphalieae)

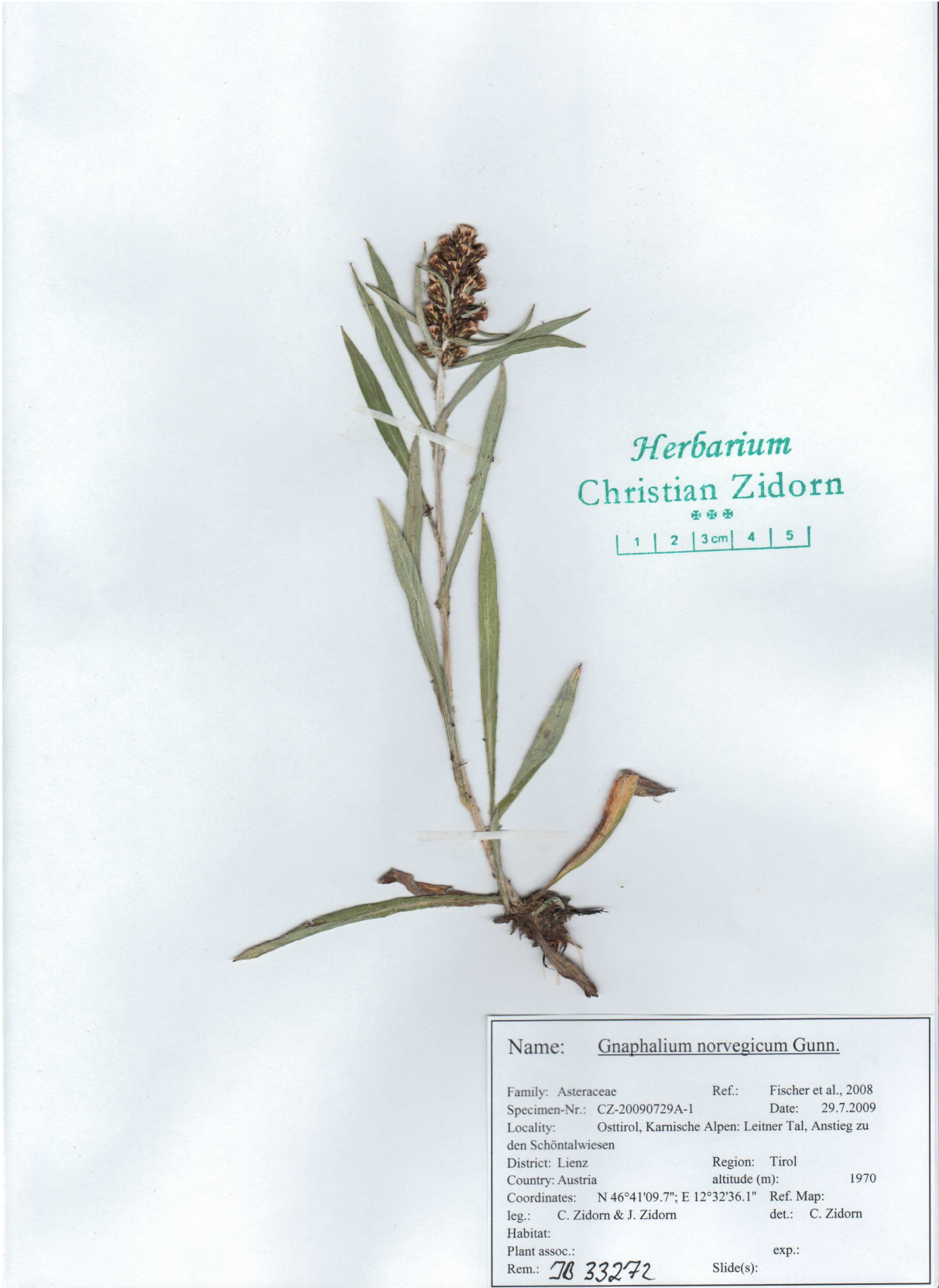
Serhat Sezai Cicek, Christa Untersulzner, Stefan Schwaiger, and  
Christian Zidorn

*Institut für Pharmazie der Universität Innsbruck, Abteilung Pharmakognosie, Josef-Moeller-Haus, Innrain 52, A-6020 Innsbruck, Austria*

<b>Table of Contents</b>	<b>Page</b>
<b>S1:</b> Scan of <i>Gnaphalium hoppeanum</i> Koch voucher specimen	2
<b>S2:</b> Scan of <i>Gnaphalium norvegicum</i> Gunnerus voucher specimen	3
<b>S3:</b> Scan of <i>Gnaphalium supinum</i> L. voucher specimen	4
<b>S4:</b> Scan of <i>Gnaphalium sylvaticum</i> L. voucher specimen	5
<b>S5:</b> Scan of <i>Gnaphalium uliginosum</i> L. voucher specimen	6



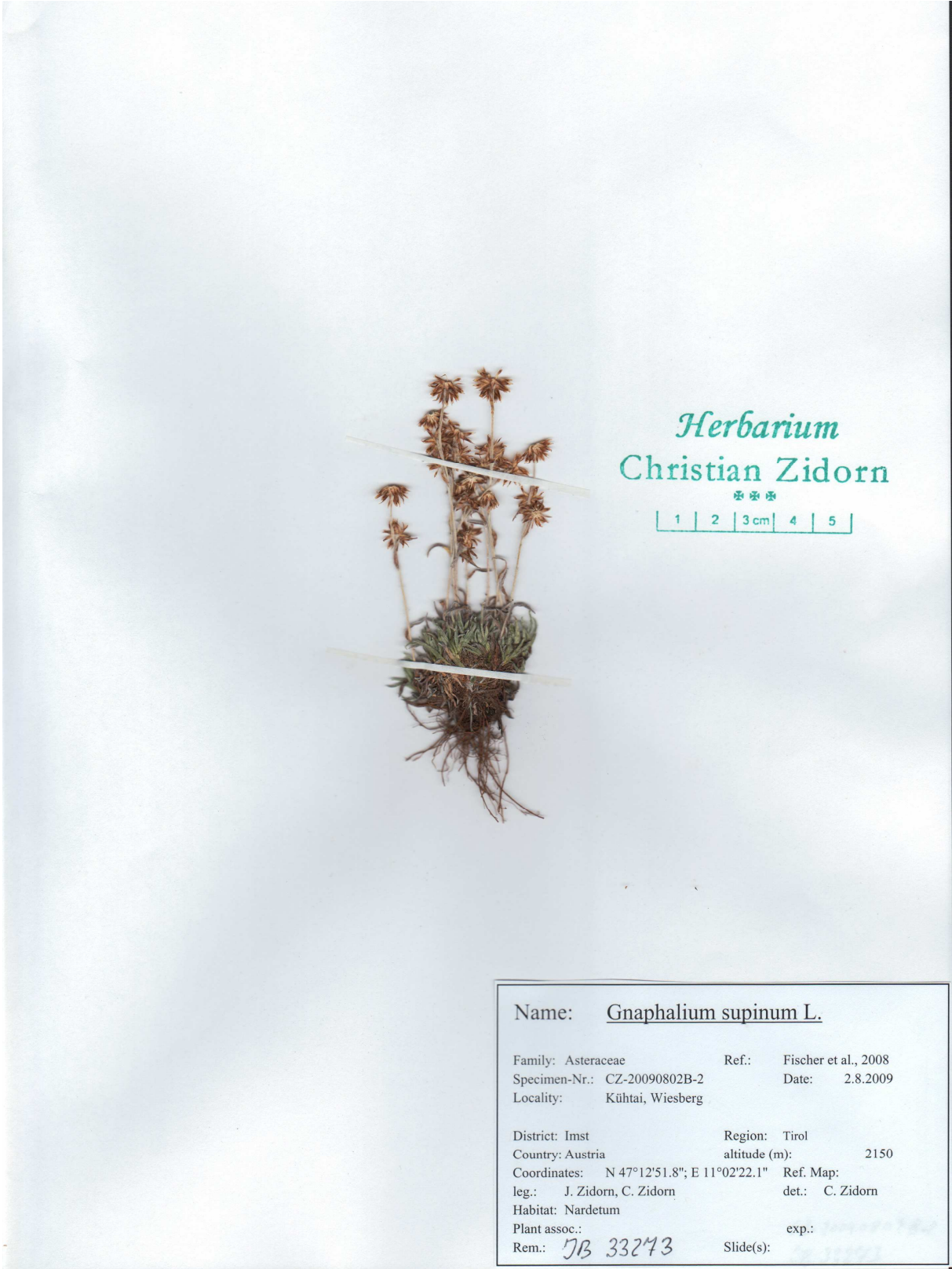
S1: Scan of *Gnaphalium hoppeanum* Koch voucher specimen



Name: Gnaphalium norvegicum Gunn.

Family: Asteraceae                      Ref.: Fischer et al., 2008  
Specimen-Nr.: CZ-20090729A-1              Date: 29.7.2009  
Locality: Osttirol, Karnische Alpen: Leitner Tal, Anstieg zu  
den Schöntalwiesen  
District: Lienz                                      Region: Tirol  
Country: Austria                                  altitude (m): 1970  
Coordinates: N 46°41'09.7"; E 12°32'36.1"      Ref. Map:  
leg.: C. Zidorn & J. Zidorn                      det.: C. Zidorn  
Habitat:  
Plant assoc.:                                      exp.:  
Rem.: *78 33272*                                      Slide(s):

S2: Scan of *Gnaphalium norvegicum* Gunnerus voucher specimen



S3: Scan of *Gnaphalium supinum* L. voucher specimen



S4: Scan of *Gnaphalium sylvaticum* L. voucher specimen

*Herbarium*  
Christian Zidorn

1 | 2 | 3 cm | 4 | 5 |



Name: Gnaphalium uliginosum L.

Family: Asteraceae Ref.: Fischer et al., 2008  
Specimen-Nr.: CZ-30090808A-1 Date: 8.8.2009  
Locality: zwischen der Ruine Stauf und St. Agatha

District: Grieskirchen Region: Oberösterreich  
Country: Austria altitude (m): 480

Coordinates: N 48°23'18.0"; E 13°55'41.8" Ref. Map:  
leg.: S. Siegel, C. Zidorn det.: C. Zidorn

Habitat: Waldwegrand  
Plant assoc.: exp.:

Rem.: JB 33275 Slide(s):

S5: Scan of *Gnaphalium uliginosum* L. voucher specimen