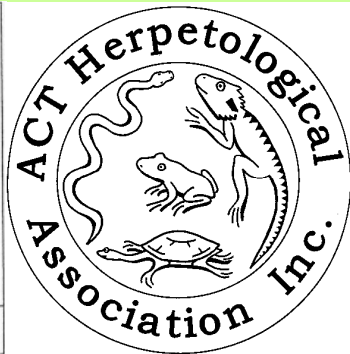
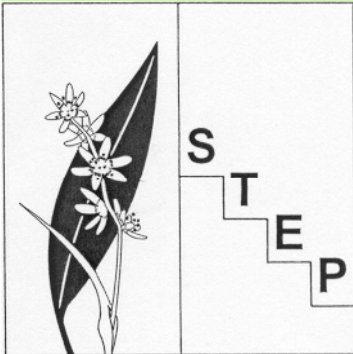


Lizards and turtles of the Southern Tablelands

Presented by
Southern Tablelands
Ecosystems Park
and the ACT
Herpetological
Association



The Southern Tablelands has

- Two fresh water turtles
- 47 lizards

How many can you
recognize?





**Long-necked
Tortoise**
(*Chelodina
longicollis*)



Baby Murray turtle (*Emydura macquarii*)

Photo by Geoff Robertson, ACT Herpetological Association 2006 display.

The Southern Tablelands 47 lizards include:

- Two monitors (goannas) top.
- Two geckos middle
- Five legless lizards bottom middle
- Six dragons bottom right
- Thirty-two skinks bottom left





**Rosenberg's
monitor** (*Varanus
rosenbergi*) grows to
160cm.

It likes open country
and lays its eggs in
termite mounds.



Rosenberg's monitor (*Varanus rosenbergi*)

Photos by Rosemary von Behrens.

Lace Monitor (*Varanus varius*) grows to 210cm.

It is a tree-hugger, which often hides on the other side of trees when danger is perceived.

Photos (right) by Margaret Ning, (left) Jim Williamson, and (below) Ross Bennett



Geckos

The two species include:

- **Marbled Gecko** (*Christinus marmoratus*)
14.5cm Photos by Margaret Ning.
- **Eastern Stone Gecko** (next slide).





Eastern Stone Gecko (*Diplodactylus vittatus*) 12.5cm.

Photo by John Wombey.



Dragons

- **Eastern Water Dragon** Grows to 95cm.
- **Eastern Bearded Dragon** Grows to 55cm.
- **Jacky Lizard** Grows to 37cm
- **Nobbi** Grows to 31cm.
- **Mountain Dragon** Grows to 15cm
- **Grassland Earless Dragon** Grows to 16cm.

Photo by Andrew Paget



Eastern Water Dragon

(Physignathus lesueurii) grows to 95cm.

A water specialist.

Photo Geoff Robertson

**Eastern
Bearded
Dragon**
(*Pogona
barbata*)
grows to
55cm.



Photos by Geoff Robertson (top) and Roger Farrow (bottom).



Jacky Lizard

(*Amphibolurus
muricatus*).
grows to 37cm.

Photos by Roger
Farrow (top) and
Margaret Ning
(below)



Against its
background
left, it can be
well-disguised.



Jacky Lizard has a bright orange mouth.

Photo by John Wombey.



Nobbi (Amphibolurus nobbi)

Similar but smaller (31 cm) than Jacky Lizard (37cm).

Lining of mouth is pink.

Photo by John Wombey.



Mountain Dragon (*Rankinia diemensis*) grows to 15cm. Photos show nest building. Looks like Jacky Lizard and Nobbi but is much smaller and has spines at base of tail. Mouth lining is blue; tongue is yellow. Photos by Roger Farrow.





Grassland Earless Dragon (*Tympanocryptis pinguicolla*)

Grows to 16cm.

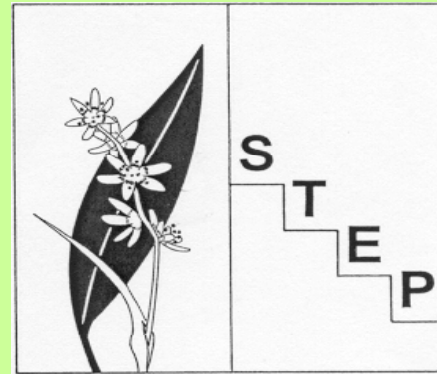
Photos by Margaret Ning top and Geoff Robertson right.



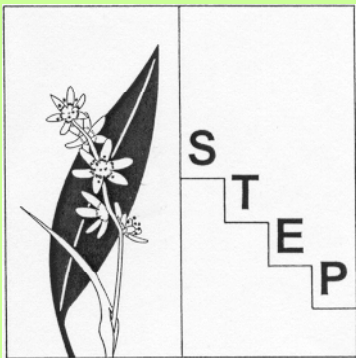
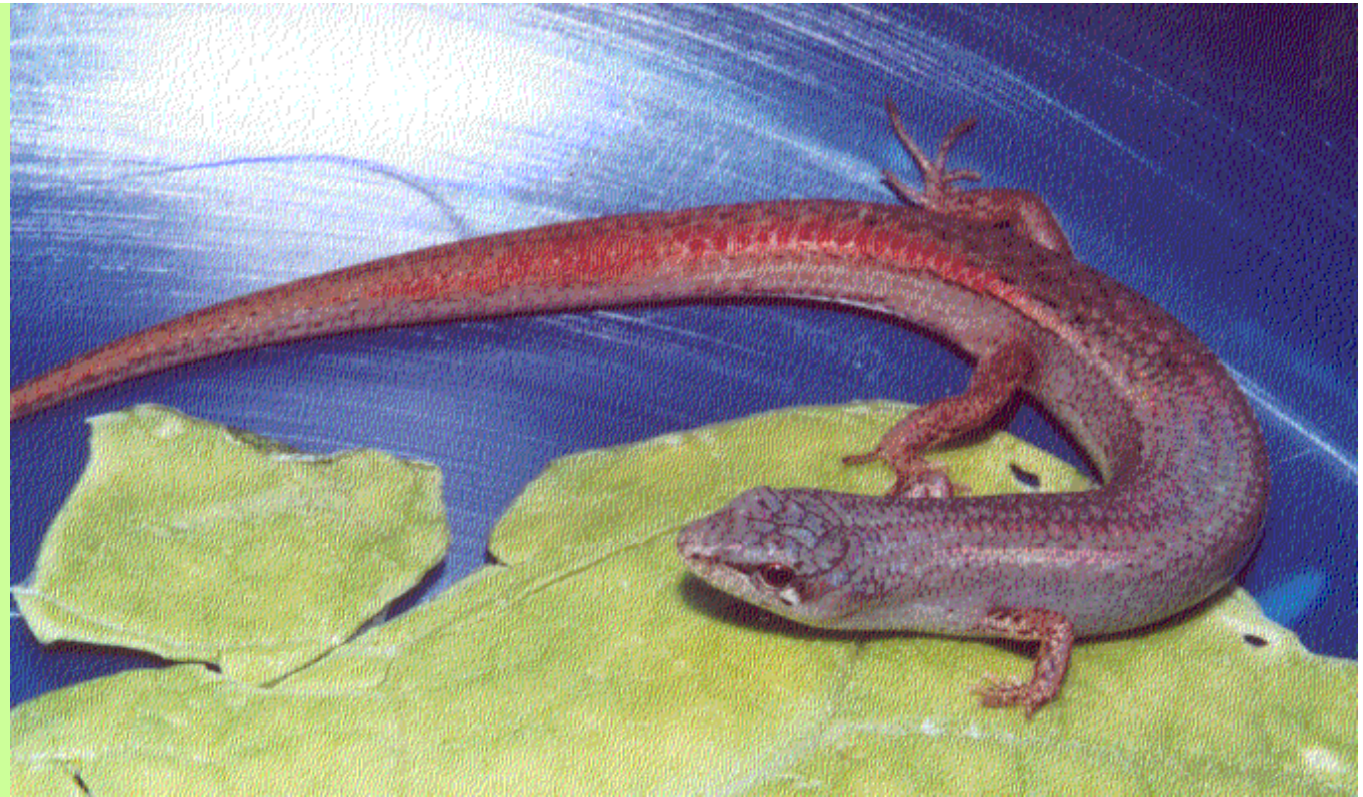
Prepared by
Geoff Robertson
with assistance of John Wombey

Photos provided by:

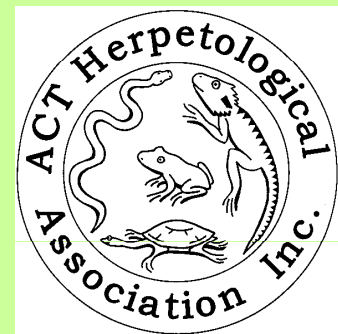
- Andrew Paget
- Ross Bennett
- Roger Farrow
- Tara Goodsell for photos
without attribution
- Margaret Ning
- Geoff Robertson
- Rosemary von Behrens
- Jim Williamson
- John Wombey



Skinks of the Southern Tablelands



Presented by
Southern Tablelands Ecosystems Park (STEP) and
the ACT Herpetological Association



Skinks

16 genera and 32 species

- Larger skinks
 - Blue tongue, shingleback and she-oaks
 - Rocky outcrop specialists
- Water skinks
- Highly patterned striped skinks
- Four-fingered and five-toed skinks
- Reduced limbs skinks
- Smaller five-fingered and five-toed



Blue-tongues, shingleback and she-oaks

- **Eastern blue-tongue** grows to 56cm.
- **Blotched blue-tongue** grows to 48cm.
- **Shingleback** grows to 39cm. Middle.
- **Northern she-oak** grows to 34cm. Bottom.
- **Alpine she-oak** Grows to 22cm.





Eastern blue-tongue lizard (*Tiliqua scincoides*) grows to 56cm

Photo by Margaret Ning.

A true story

Houdini an eastern blue-tongue escaped from its loving owners by squeezing through a 6mm drainage grill.

He then climbed up the inside of a three meter drain pipe.



Squeezing under the roof tile was no problem.

Houdini lived in ceiling and sunned himself in the gutter for two months.

He was finally caught and returned home.

Photo by Margaret Ning.



**Blotched
blue-
tongue**

*(Tiliqua
nigrolutea)*

grows to
48cm.



Photo by
Margaret Ning.



Shingleback (*Trachydosaurus rugosus*) grows to 39cm.

Photo by Margaret Ning.



Northern she-oak skink (*Cyclodomorphus michaeli*) grows to 34cm. Restricted to escarpment. **Alpine she-oak** (*Cyclodomorphus praealtus*) (No picture) Grows to 22cm. Restricted to NSW Alps.

Photo by John Wombey.

Egernia

Rocky outcrop specialists

- **Cunningham's skink** grows to 39cm.
- **Black rock-skink** grows to 28 cm.
- **Snowy Mountains rock-skink** (*Egernia guthega*) grows to 32 cm. No photo.
- **Tan-back rock-skink** grows to 28cm.
- **White's skink** grows to 32 cm.





Cunningham's skink (*E. cunninghami*) grows to 39cm

Photo by Geoff Robertson

Black rock- skink

*(Egernia
saxatilis)* grows
to 28cm

Photos by Margaret
Ning (top) and Geoff
Robertson (bottom)





White's skink
(*Egernia whitii*) grows
to 32cm

Photos by Margaret Ning.



Tan-back rock-skink (*E. montana*) grows to 28cm.

Photo by Pierre Cochard

Water skinks (*Eulamprus*)

Highly patterned largish skinks with obvious black flecks on backs. Found along streams and watercourses, often on rocky ledges.

- **Highland water-skink** Grows to 22cm
- **Southern water-skink** Grows to 21cm.
- **Eastern water-skink** Grows to 28cm.
- **Alpine water-skink** Grows to 19cm.





Southern water-skink (*Eulamprus tympanum*).

Highland (*E. heatwolei*) (no photo) and southern water-skinks are closely related and difficult to tell apart.

Photo by Geoff Robertson



Eastern water-skink (*Eulamprus quoyii*).

It is largest water-skink growing to 28cm. Back is metallic greenish to greyish-brown with a more obvious white-yellow dorsolateral stripe.

Photo by John Wombey.



Alpine water-skink (*Eulamprus kosciuskoi*) in spagnum.
Grows to 19cm. Black flecks form stripes. Restricted to Alpine areas.
Photo by John Wombey.

Ctenotus

Complex pattern of stripes and dots. Found in drier areas.

- **Robust ctenotus** Grows to 37cm
- **Spotted ctenotus** Grows to 22 cm.
- **Copper-tailed ctenotus.** Grows to 19cm.

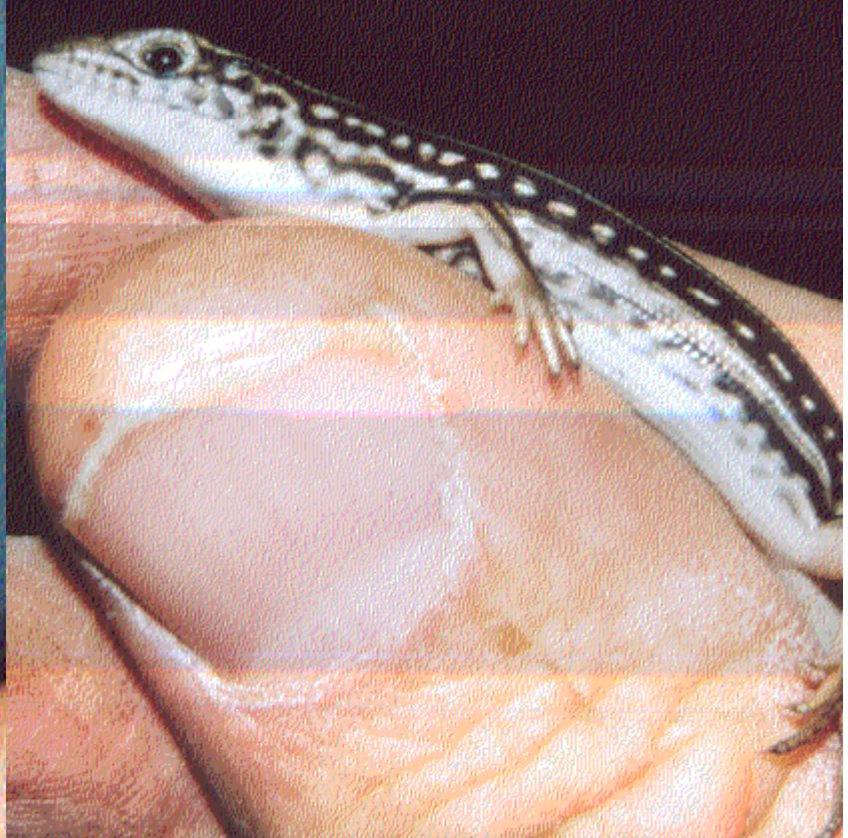




Baby **robust ctenotus** (*Ctenotus robustus*) grow to 37cm.

Robust ctenotus has no dots on back, unlike spotted ctenotus (next slide).

Photos by Margaret Ning.





Spotted ctenotus (*Ctenotus orientalis* or *C. uber*)

Grow to 22 cm. Has spots on back.

Photo by John Wombey.



Copper-tailed ctenotus (*Ctenotus taeniolatus*)

Grows to 19cm.

Photo by John Wombey.

*Four-
fingered
and five-toed.*

- **Southern rainbow skink**
Grows to 16cm.
- **Common dwarf skink**
Grows to 10.5cm.





Southern rainbow skink (*Carlia tetradactyla*)

Grows to 16cm. Note orange and red lateral stripes.

Photo by John Wombey.



Common Dwarf Skink (*Mentia greyii*)

Grows to 10.5cm.

Photo by John Wombey.

Skinks with Reduced- limbs

- **Three-toed skink** Grows to 11cm.
- **MacCoy's skink** Grows to 11cm.





Three-toed skink
(*Hemiergus*
decrensiensis). Grows
to 11cm. Belly is
yellow.

Photos by Margaret Ning
(top), Geoff Robertson
(middle) and John Wombey
(bottom).





MacCoy's skink (*Nannoscincus maccoyi*).

Grows to 11cm.

Photo by John Wombey.

*Other smaller skinks with
five fingers &
toes*

- **Red-throated and bold-striped skink** Grow to 20-22cm.
- **Four tussock and related skinks** Grow to 16-18cm.
- **Weasel skink** Grows to 16cm.
- **Southern forest skink** Grows to 14cm.
- **South-eastern morethia skink** Grow to 12cm.
- **Two sun-skinks** Grow to 9-11cm.





Red-throated skink (*Acritoscincus platynotum*)

Grows to 22cm. Can have a bright red-throat and its back is iridescent.

Related species **bold-striped skink** (*A. duperreyi*)

Grows to 20cm - not shown.

Tussock and related skinks

(Pseudemoia)



- **Woodland tussock skink**
Grows to 17cm.
- **Grassland tussock skink**
Grows to 17cm.
- **Glossy grass skink** (*P. rawlinsoni*) Grows to 18cm. No picture.
- **Spencer's skink** Grows to 16cm.





A gravid (pregnant)
female

**woodland
tussock skink**

(*Pseudemoia
entrecasteauxii*).

Grows to 17cm.

Often seen with
patches of light red
around head.

Close relative,

**grassland
tussock skink**

(*P. pagenstecheri*),

not shown, has
distinctive red
lateral stripe.

Photos by Margaret
Ning.

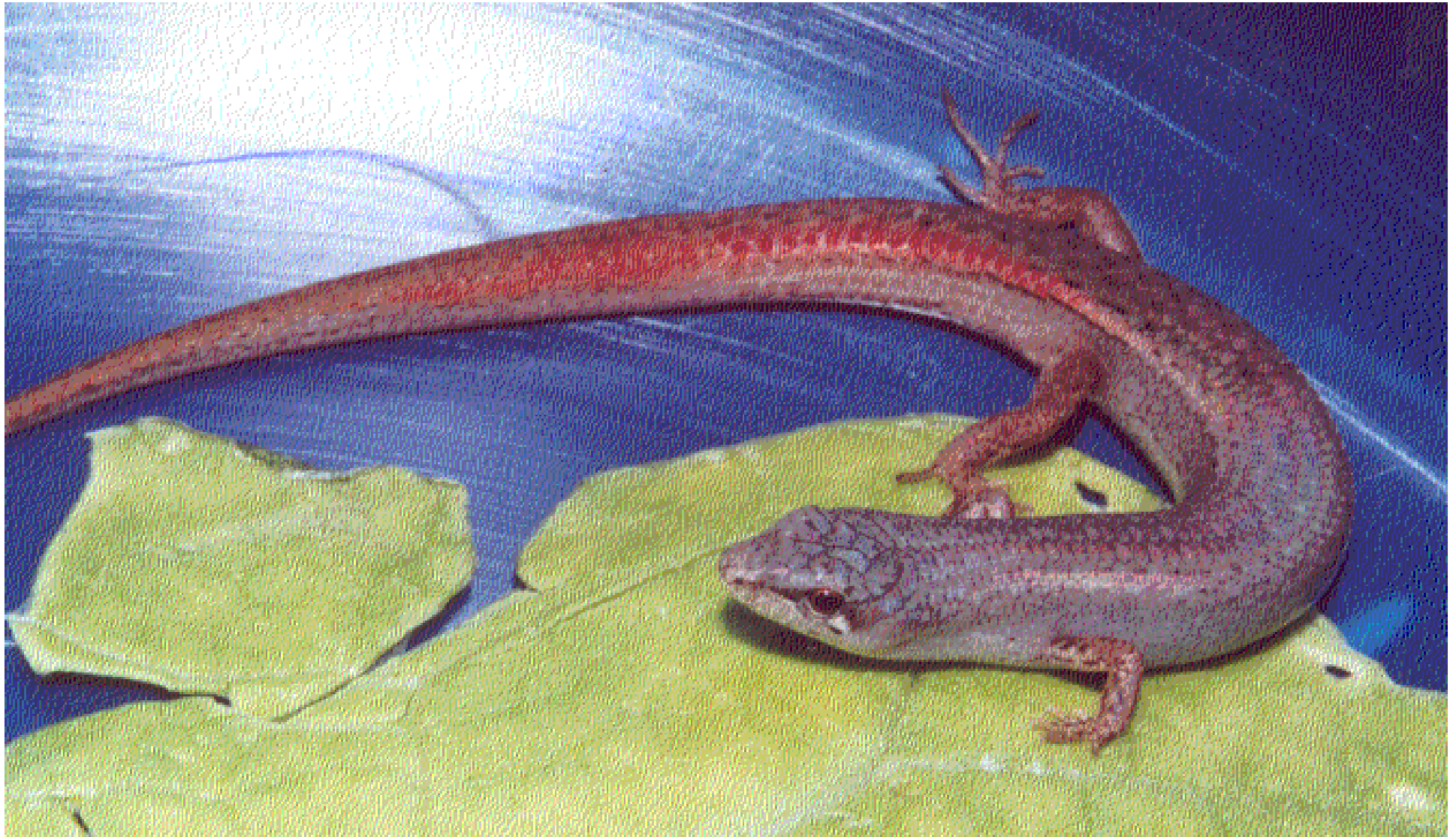


Spencer's skink (*Pseudemoia spenceri*)

Grows to 16cm. Has very distinctive stripe and dot pattern.

Photos by Margaret Ning (top) and Geoff Robertson (right)





Weasel skink (*Saproscincus mustelinus*)

Grows to 16cm.

Photo by Margaret Ning.



Southern forest skink (*Niveoscincus coventryi*)

Grows to 14cm.

Photo by John Wombey



Boulenger's morethia skink (*Morethia boulengeri*)

Grows to 12cm.

Photo by John Wombey.



Garden sunskink
(*Lampropholis delicata*), grows to
11cm.

Photo by Geoff Robertson



Grass sunskink (*Lampropholis guichenoti*) grows to 9cm.
Garden sunskink (*Lampropholis delicata*), not shown, grows to 11cm.

Photos by Margaret Ning.

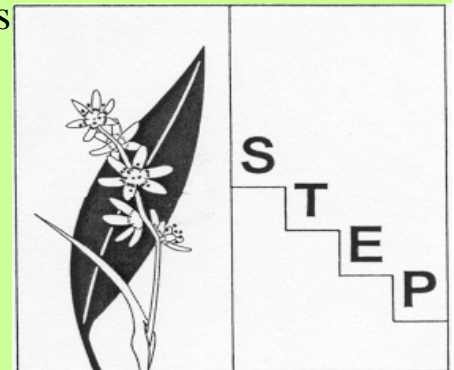


Prepared by
Geoff Robertson
with assistance of
John Wombey



Photos provided by:

- Pierre Cochard
- Roger Farrow
- Tara Goodsell for photos without attribution
- Margaret Ning
- Geoff Robertson
- John Wombey





Same or different species?

Here they are again!





Woodland tussock-skink (*Pseudemoia entrecasteauxii*). See red stripe and red below eye.



Grass sun skink (*Lampropholis guichenoti*)