



HIFONICS

SUPREME CAR AUDIO



www.hifonics.de

DISTRIBUTORE ESCLUSIVO PER L'ITALIA
ALKOR GROUP S.R.L.

Via G. Verdi, 1/C 26027 Rivolta d'Adda (CR)
P.IVA 06815000960 - info@alkorgroup.com
Telefono 0363/78515 - Fax 0363/371666

**POWER
FROM
THE
GODS**

An aerial, high-angle photograph of a racetrack at night. The track is illuminated, showing its curves and multiple lanes. The surrounding area is dark, with some faint lights visible in the distance. Overlaid on the center of the image is the text "POWER FROM THE GODS" in a large, bold, white, sans-serif font. The word "THE" is smaller and positioned between "FROM" and "GODS".

**POWER
FROM
THE
GODS**



Im Jahre 1982 wurde mit HiFonics eine der erfolgreichsten und eindrucksvollsten Marken der Car Hifi Geschichte gegründet. Die Liste der Meilensteine ist lang und zieht sich wie der berühmte "Rote Faden" durch die fast 40-jährige Erfolgsstory. Angefangen mit der legendären SERIES VII, der berühmten GENERATION XI oder der gigantischen XX-MAXXIMUS Subwoofer-Endstufe mit 10.000 Watt, bis hin zu den aktuellen Modellen – alle Verstärker-Serien vereinten stets wichtige Gemeinsamkeiten: Power, Qualität und Performance. HiFonics wurde zum Inbegriff für grandiose Car Audio Verstärker.

Doch nicht nur das Endstufensegment begeistert die Car-Hifi-Enthusiasten, denn mittlerweile ist HiFonics auch für mächtige Subwoofer-Systeme, erstklassige Lautsprecher oder fortschrittliche Verstärker und Prozessoren mit DSP-Technologie bekannt. Auch kompakte und etwas dezentere Komponenten fanden in der Zwischenzeit ihren Platz im HiFonics Programm und überzeugen mit Technologie, Leistung und Performance.

Kurzum - HiFonics bietet ein ausgewogenes Portfolio an hochwertigen Audio-Produkten, die sowohl Einsteiger als auch Experten rundum zufrieden stellen.

In the year 1982 HiFonics was founded as one of the most successful and impressive brands of the Car Audio Industry. HiFonics is proud of many Milestones which were set in the 40 year lasting company success story, starting with the legendary Series VII, the famous Generation XI or the giant XX-MAXXIMUS subwoofer amplifier with 10.000 Watts of power, leading to the current models - all amplifier series though are united by the same characteristics: power, quality and performance. HiFonics became the synonym for amazing car audio amplifier power.

But not only the amplifier segment thrills the car hifi enthusiasts, because now HiFonics is also known for powerful subwoofer systems, first-class speakers or advanced amplifiers and processors with DSP technology. In the meantime, compact and more decent components have found their place in the HiFonics program and convince with technology, power and performance.

In short - HiFonics offers a well balanced portfolio of high-quality audio products that satisfy both beginners and experts.



GENERATION X4 HIGH END

- Basspegel Kabelfernbedienung , Remote Outputs
- Verschraubte Cinchbuchsen
- Gekapselte Anschlüsse, Maxi-Fuses
- Bipolare Ausgangstransistoren (Class A/B)
- MOSFET Ausgangstransistoren (Class D)
- Großdimensionierte XXL Trafos
- Beleuchtetes Logo Badge (blau oder weiß)
- Schwere Guss-Endteile
- Rauscharme Eingangs-OPs (9V/μS Slew-Rate)
- Symmetrische Eingänge (Balanced Line-Inputs)

- *Bass Level Remote Controller, Remote Outputs*
- *Screw-type RCA Jacks*
- *Molded Terminals and Maxi-Fuses*
- *Bipolar Output Transistors (Class A/B)*
- *MOSFET Output Transistors (Class D)*
- *XXL-sized Transformers*
- *Illuminated Logo Badge (blue or white)*
- *Heavy Die-cast Frames*
- *Low-noise Input OP-Amps (9V/μS Slew-rate)*
- *Balanced Line Inputs*



CAR&HIFI BEST PRODUCT
Ausgabe 6/2013
Hifonics X4 Maximus
Absolute Spitzenklasse
Preis/Leistung: sehr gut **1,0**

BEST PRODUCT
Absolute Spitzenklasse
CAR&HIFI 6/2013

X4 GOLIATH

Class D Mono Amplifier

1 x 2000 W/RMS @ 4 Ω
1 x 3000 W/RMS @ 2 Ω
1 x 4500 W/RMS @ 1 Ω
24 dB LP 40 - 250 Hz, 24 dB Subsonic 10 - 50 Hz
Phase Shift 0 - 180°, Parametric Bass EQ
266 x 64 x 653/683 mm
Efficiency up to 81%

X4 HERCULES

Class D Mono Amplifier

1 x 1200 W/RMS @ 4 Ω
1 x 2000 W/RMS @ 2 Ω
1 x 3000 W/RMS @ 1 Ω
24 dB LP 40 - 250 Hz, 24 dB Subsonic 10 - 50 Hz
Phase Shift 0 - 180°, Parametric Bass EQ
266 x 64 x 464/494 mm
Efficiency up to 81%

CAR&HIFI BEST PRODUCT
Ausgabe 6/2013
Hifonics X4 Cronos
Spitzenklasse
Preis/Leistung: sehr gut **1,1**

BEST PRODUCT
Spitzenklasse
CAR&HIFI 6/2013

CAR&HIFI BEST PRODUCT
Ausgabe 6/2013
Hifonics X4 Goliath
Absolute Spitzenklasse
Preis/Leistung: hervorragend **1,0**

BEST PRODUCT
Absolute Spitzenklasse
CAR&HIFI 6/2013

X4 MAXXIMUS

Class D 2-Channel Amplifier

2 x 1200 W/RMS @ 4 Ω
2 x 2000 W/RMS @ 2 Ω
2 x 3000 W/RMS @ 1 Ω
24 dB LP 40 - 250 Hz, 24 dB Subsonic 10 - 50 Hz
Phase Shift 0 - 180°, Parametric Bass EQ
266 x 64 x 850/880 mm
Efficiency up to 80%

Generation X4

AMPLIFIERS

CAR&HIFI BEST PRODUCT
Ausgabe 5/2013
Hifonics X4 Atlas
Spitzenklasse
Preis/Leistung: sehr gut **1,1**

BEST PRODUCT
Spitzenklasse
CAR&HIFI 5/2013

CAR&HIFI TESTURTEIL
Ausgabe 5/2013
Hifonics X4 Hercules
Absolute Spitzenklasse
Preis/Leistung: sehr gut **1,2**

X4 COLOSSUS

Class A/B 2-Channel Amplifier

2 x 600 W/RMS @ 4 Ω
2 x 1000 W/RMS @ 2 Ω
2 x 1500 W/RMS @ 1 Ω
HP 10 - 4000 Hz, LP 40 - 4000 Hz
Subsonic 10 - 150 Hz
12/24dB X-Over-Switch
Bass Boost 0 - 18 dB
Vice Versa Output Signal
266 x 64 x 850/880 mm
Efficiency up to 60%

X4 ZEUS

Class A/B 2-Channel Amplifier

2 x 350 W/RMS @ 4 Ω
2 x 600 W/RMS @ 2 Ω
2 x 750 W/RMS @ 1 Ω
HP 10 - 4000 Hz, LP 40 - 4000 Hz
Subsonic 10 - 150 Hz
12/24dB X-Over-Switch
Bass Boost 0 - 18 dB
Vice Versa Output Signal
266 x 64 x 510/540 mm
Efficiency up to 60%

X4 BOLTAR

Class A/B 2-Channel Amplifier

2 x 250 W/RMS @ 4 Ω
2 x 450 W/RMS @ 2 Ω
2 x 600 W/RMS @ 1 Ω
HP 10 - 4000 Hz, LP 40 - 4000 Hz
Subsonic 10 - 150 Hz
12/24dB X-Over-Switch
Bass Boost 0 - 18 dB
Vice Versa Output Signal
266 x 64 x 445/475 mm
Efficiency up to 63%

CAR&HIFI LEISTUNGSTIPP
Ausgabe 5/2013
Hifonics X4 Zeus
Absolute Spitzenklasse
Preis/Leistung: sehr gut **1,0**

LEISTUNGSTIPP
Absolute Spitzenklasse
CAR&HIFI 5/2013



X4 ATLAS

Class A/B Mono Amplifier

1 x 600 W/RMS @ 4 Ω
1 x 1100 W/RMS @ 2 Ω
1 x 1750 W/RMS @ 1 Ω
24 dB LP 40 - 250 Hz
24 dB Subsonic 10 - 50 Hz
Master/Slave-Mode
Full Range Mode
Phase Shift 0 - 180°
Parametric Bass EQ
266 x 64 x 510/540 mm
Efficiency up to 61%

X4 ANDROMEDA

Class A/B 4-Channel Amplifier

4 x 150 W/RMS @ 4 Ω
4 x 250 W/RMS @ 2 Ω
4 x 325 W/RMS @ 1 Ω
2 x HP 10 - 4000 Hz
2 x LP 40 - 4000 Hz
2 x Bass Boost 0 - 18 dB
12/24dB X-Over-Switch
Bandpass Mode
Summed RCA/Cinch Outputs
266 x 64 x 445/475 mm
Efficiency up to 65%

autohifi TESTURTEIL
Ausgabe 1/2013
Hifonics Boltar X4
Absolute Spitzenklasse **76**
Preis/Leistung: ÜBERRAGEND

CAR&HIFI TESTURTEIL
Ausgabe 5/2013
Hifonics X4 Andromeda
Absolute Spitzenklasse
Preis/Leistung: sehr gut **1,0**

autohifi TESTURTEIL
Ausgabe 1/2013
Hifonics Andromeda X4
Absolute Spitzenklasse **79**
Preis/Leistung: ÜBERRAGEND

ZEUS ZRX PREMIUM ANALOG

- Basspegel Kabelfernbedienung
- Verschraubte Cinchbuchsen
- Blaue Anschlussterminal-Beleuchtung
- Beleuchtetes Logo Badge (blau oder weiß)
- Blaue, seitlich beleuchtete Kühlkörperrippen
- ΩAuto Turn-On über Hochpegeleingänge, Start/Stop ready
- Rauscharme Eingangs-OPs (9V/μS Slew-Rate)
- Doppelt kaschierte Platine

- *Bass Level Remote Controller*
- *Screw-type RCA Jacks*
- *Blue Terminal Illumination*
- *Illuminated Logo Badge (blue or white)*
- *Laterally Blue illuminated Heatsink Fins*
- *Auto Turn-On via High Level Inputs, Start/Stop ready*
- *Low-noise Input OP-Amps (9V/μS Slew-rate)*
- *Double-sided PC-Board*

Zeus
AMPLIFIERS



ZRX4002

Class A/B 2-Channel Amplifier
2 x 125/200 W/RMS @ 4/2 Ω
1 x 400 W/RMS @ 4 Ω bridged
HP 10 - 1200 Hz, LP 30 - 250 Hz
Bass Boost 0 - 18 dB @ 45 Hz
Bandpass-Mode
255 x 62 x 260/300 mm
Efficiency up to 65%

ZRX6002

Class A/B 2-Channel Amplifier
2 x 175/300 W/RMS @ 4/2 Ω
1 x 600 W/RMS @ 4 Ω bridged
HP 10 - 1200 Hz, LP 30 - 250 Hz
Bass Boost 0 - 18 dB @ 45 Hz
Bandpass-Mode
255 x 62 x 360/400 mm
Efficiency up to 77%

ZRX9002

Class A/B 2-Channel Amplifier
2 x 300/500 W/RMS @ 4/2 Ω
1 x 1000 W/RMS @ 4 Ω bridged
HP 10 - 1200 Hz, LP 30 - 250 Hz
Bass Boost 0 - 18 dB @ 45 Hz
Bandpass-Mode
255 x 62 x 400/440 mm
Efficiency up to 71%

ZRX4404

Class A/B 4-Channel Amplifier
4 x 75/150 W/RMS @ 4/2 Ω
2 x 300 W/RMS @ 4 Ω bridged
2 x HP 10 - 1200 Hz
2 x LP 30 - 250 Hz
2 x Bass Boost 0 - 18 dB @ 45 Hz
Bandpass-Mode, Twin-Sub Mode
255 x 62 x 350/390 mm
Efficiency up to 61%

ZRX6404

Class A/B 4-Channel Amplifier
4 x 100/200 W/RMS @ 4/2 Ω
2 x 400 W/RMS @ 4 Ω bridged
2 x HP 10 - 1200 Hz
2 x LP 30 - 250 Hz
2 x Bass Boost 0 - 18 dB @ 45 Hz
Bandpass-Mode, Twin-Sub Mode
255 x 62 x 400/440 mm
Efficiency up to 73%

ZRX9404

Class A/B 4-Channel Amplifier
4 x 150/300 W/RMS @ 4/2 Ω
2 x 600 W/RMS @ 4 Ω bridged
2 x HP 10 - 1200 Hz
2 x LP 30 - 250 Hz
2 x Bass Boost 0 - 18 dB @ 45 Hz
Bandpass-Mode, Twin-Sub Mode
255 x 62 x 450/490 mm
Efficiency up to 75%

ZRX8805

Class A/B 5-Channel Amplifier
4 x 75 / 125 W/RMS @ 4/2 Ω
+ 1 x 200 / 300 W/RMS @ 4/2 Ω
CH1/2: HP 50-4000Hz, 2/4/5CH Input Switch
CH3/4: HP 50-250Hz, LP 150-4000Hz, Bandpass-Mode
CH5: LP 35-150Hz, Bass-Boost 0-18dB, Subsonic 15-55Hz
255 x 62 x 420/460 mm
Efficiency up to 57%

ATLAS ARX PREMIUM HYBRID

- Basspegel Kabelfernbedienung
- Verschraubte Cinchbuchsen
- Blaue Anschlussterminal-Beleuchtung
- Beleuchtetes Logo Badge (blau oder weiß)
- Blaue, seitlich beleuchtete Kühlkörperrippen
- ΩAuto Turn-On über Hochpegeleingänge, Start/Stop ready
- Rauscharme Eingangs-OPs (9V/μS Slew-Rate)
- Doppelt kaschierte Platine

- *Bass Level Remote Controller*
- *Screw-type RCA Jacks*
- *Blue Terminal Illumination*
- *Illuminated Logo Badge (blue or white)*
- *Laterally blue illuminated Heatsink Fins*
- *Auto Turn-On via High Level Inputs, Start/Stop ready*
- *Low-noise Input OP-Amps (9V/μS Slew-rate)*
- *Double-sided PC-Board*



Atlas
AMPLIFIERS

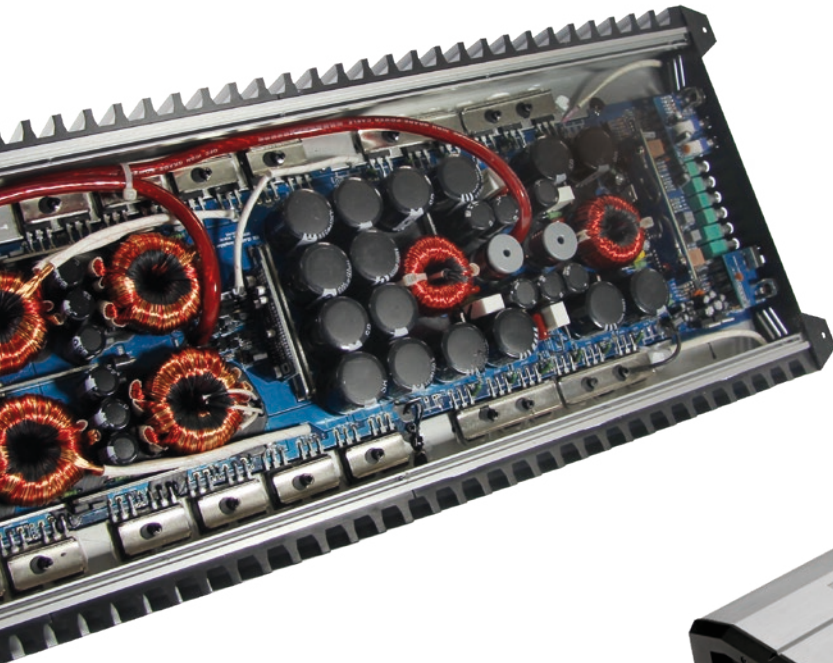
ARX3003

Class A/B & D 3-Channel Amplifier
Class A/B: 2 x 75/125 W/RMS @ 4/2 Ω
HP 40-150 Hz
Class D: 1 x 250/450/650 W/RMS @ 4/2/1 Ω
LP 40-150 Hz, Subsonic 15-55 Hz
Bass-Boost 0-18db
255 x 62 x 300/340 mm
Efficiency up to 60/83%

ARX5005

Class A/B & D 5-Channel Amplifier
Class A/B: 4 x 75/125 W/RMS @ 4/2 Ω
CH 1&2: HP 15-4000 Hz
CH 3&4: HP 15-4000 Hz, BP 50-4000 Hz
Class D: 1 x 250/450/650 W/RMS @ 4/2/1 Ω
LP 30-150 Hz, Subsonic 15-55 Hz
Bass-Boost 0-18db, 255 x 62 x 420/460 mm
Efficiency up to 60/83%

BRUTUS BRX PREMIUM DIGITAL



Brutus AMPLIFIERS

- Basspegel Kabelfernbedienung
 - Verschraubte Cinchbuchsen, blaue Anschlussterminal-Beleuchtung
 - Beleuchtetes Logo Badge (blau oder weiß)
 - Blaue, seitlich beleuchtete Kühlkörperrippen
 - Ω Auto Turn-On über Hochpegeleingänge, Start/Stop ready
 - Rauscharme Eingangs-OPs (9V/ μ S Slew-Rate)
 - Doppelt kaschierte Platine
 - Parametrischer Bass EQ
 - Master/Slave Link-Modus
- Bass Level Remote Controller
 - Screw-type RCA Jacks, Blue Terminal Illumination
 - Illuminated Logo Badge (blue or white)
 - Laterally blue illuminated Heatsink Fins
 - Auto Turn-On via High Level Inputs, Start/Stop ready
 - Low-noise Input OP-Amps (9V/ μ S Slew-rate)
 - Double-sided PC-Board
 - Parametric Bass EQ
 - Master/Slave Link-Mode



BRX1500 D
Class D Mono Amplifier
1 x 300 W/RMS @ 4 Ω
1 x 500 W/RMS @ 2 Ω
1 x 750 W/RMS @ 1 Ω
LP 35 - 250 Hz
Subsonic 15 - 55 Hz
Phase Shift 0 - 180 $^\circ$
Parametric Bass EQ
Balanced Line Inputs
255 x 62 x 300/340 mm
Efficiency up to 83%

BRX2000 D
Class D Mono Amplifier
1 x 500 W/RMS @ 4 Ω
1 x 750 W/RMS @ 2 Ω
1 x 1000 W/RMS @ 1 Ω
LP 35 - 250 Hz
Subsonic 15 - 55 Hz
Phase Shift 0 - 180 $^\circ$
Parametric Bass EQ
Balanced Line Inputs
255 x 62 x 360/400 mm
Efficiency up to 83%

BRX3000 D
Class D Mono Amplifier
1 x 650 W/RMS @ 4 Ω
1 x 1000 W/RMS @ 2 Ω
1 x 1500 W/RMS @ 1 Ω
LP 35 - 250 Hz
Subsonic 15 - 55 Hz
Phase Shift 0 - 180 $^\circ$
Parametric Bass EQ
Balanced Line Inputs
255 x 62 x 380/420 mm
Efficiency up to 85%

BRX4000 D
Ultra Class D Mono Amplifier
1 x 800 W/RMS @ 4 Ω
1 x 1400 W/RMS @ 2 Ω
1 x 2250 W/RMS @ 1 Ω
LP 35 - 250 Hz
Subsonic 15 - 55 Hz
Phase Shift 0 - 180 $^\circ$
Parametric Bass EQ
Balanced Line Inputs
255 x 62 x 500/540 mm
Efficiency up to 88%

BRX6000 D
Ultra Class D Mono Amplifier
1 x 1200 W/RMS @ 4 Ω
1 x 2200 W/RMS @ 2 Ω
1 x 3000 W/RMS @ 1 Ω
LP 35 - 250 Hz
Subsonic 15 - 55 Hz
Phase Shift 0 - 180 $^\circ$
Parametric Bass EQ
Balanced Line Inputs
255 x 62 x 500/540 mm
Efficiency up to 86%

BRX9000 D
Ultra Class D Mono Amplifier
1 x 1600 W/RMS @ 4 Ω
1 x 3000 W/RMS @ 2 Ω
1 x 4500 W/RMS @ 1 Ω
LP 35 - 250 Hz
Subsonic 15 - 55 Hz
Phase Shift 0 - 180 $^\circ$
Parametric Bass EQ
Balanced Line Inputs
255 x 62 x 600/640 mm
Efficiency up to 84%

BRX12000 D
Ultra Class D Mono Amplifier
1 x 2500 W/RMS @ 4 Ω
1 x 4500 W/RMS @ 2 Ω
1 x 6000 W/RMS @ 1 Ω
LP 35 - 250 Hz
Subsonic 15 - 55 Hz
Phase Shift 0 - 180 $^\circ$
Parametric Bass EQ
Balanced Line Inputs
255 x 62 x 750/790 mm
Efficiency up to 84%



THOR TRX PREMIUM DSP

- Integrierter 8-Kanal DSP Prozessor 32bit / 192 kHz
- Beleuchtetes Logo Badge (blau oder weiß)
- Blaue, seitlich beleuchtete Kühlkörperrippen
- Blaue Anschlussterminal-Beleuchtung
- Rauscharme Eingangs-OPs (9V/μS Slew-Rate)
- Doppelt kaschierte Platine
- DSP Software M-CONTROL 2 für MS Windows™
Gain -40~+12dB, 6 x 31-Band EQ 20~20.000 Hz,
2 x 11-Band EQ 20~200 Hz, 6~48 db/Okt. Filter HP/BP/LP
Laufzeitkorrektur 0~15 ms/0~510 cm, Phasendrehung 0°/180°
- Fernbedienung mit LCD-Anzeige inkl. Eingangsselektor
Regler für Master-Lautstärke und Subwoofer-Pegel
10 speicherbare Settings wählbar
- *Integrated 8-Channel DSP Processor 32bit / 192 kHz*
- *Illuminated Logo Badge (blue or white)*
- *Laterally blue illuminated Heatsink Fins*
- *Blue Terminal Illumination*
- *Low-noise Input OP-Amps (9V/μS Slew-rate)*
- *Double-sided PC-Board*
- *DSP Software M-CONTROL 2 for MS Windows™*
Gain -40~+12dB, 6 x 31-Band EQ 20~20.000 Hz,
2 x 11-Band EQ 20~200 Hz, 6~48 db/Oct. Crossovers HP/BP/LP
Time Delay 0~15 ms/0~510 cm, Phase Shift 0°/180°
- *Remote Controller with LCD Display incl. Input Mode Selectors*
Controller for Master Volume and Subwoofer Level
10 storeable Settings can be selected

Thor
DSP AMPLIFIERS



Hifonics TRX4004 DSP
Absolute Spitzenklasse
1,3
Preis/Leistung:
hervorragend
CAR & HIFI Ausgabe 6/2015
„Spitzenendstufen mit DSP –
großartige Serie!“

Hifonics TRX5005 DSP
Absolute Spitzenklasse
1,2
Preis/Leistung:
hervorragend
CAR & HIFI Ausgabe 6/2015
„Spitzenendstufen mit DSP –
großartige Serie!“

BEST PRODUCT
Absolute Spitzenklasse
CAR & HIFI 6/2015

Hifonics TRX6006 DSP
Absolute Spitzenklasse
1,0
Preis/Leistung:
hervorragend
CAR & HIFI Ausgabe 6/2015
„Spitzenendstufen mit DSP –
großartige Serie!“

HIGHLIGHT
Absolute Spitzenklasse
CAR & HIFI 6/2015

TRX4004DSP

Class A/B 4-Channel DSP Amplifier

4 x 100/150 W/RMS @ 4/2 Ω
2 x 300 W/RMS @ 4 Ω bridged
6 RCA Inputs, 2 RCA AUX Inputs
4 RCA Line Outputs
Optical Input (stereo PCM 2.0)
255 x 62 x 355/395 mm
Efficiency up to 61%

TRX5005DSP

Class A/B and D 5-Channel DSP Amplifier

Class A/B: 4 x 75/125 W/RMS @ 4/2 Ω
Class D: 1 x 250/450/650 W/RMS @ 4/2/1 Ω
6 RCA Inputs, 2 RCA AUX Inputs
2 RCA Line Outputs
Optical Input (stereo PCM 2.0)
255 x 62 x 415/455 mm
Efficiency up to 60/81%

TRX6006DSP

Class A/B 6-Channel DSP Amplifier

6 x 100/150 W/RMS @ 4/2 Ω
3 x 300 W/RMS @ 4 Ω bridged
6 RCA Inputs, 2 RCA AUX Inputs
2 RCA Line Outputs
Optical Input (stereo PCM 2.0)
255 x 62 x 395/435 mm
Efficiency up to 63%

M-CONTROL 2 DSP SOFTWARE



Die M-CONTROL 2 Software bietet eine Vielzahl von Möglichkeiten, Ihr Soundsystem optimal anzupassen. Eine übersichtlich und logisch aufgebaute Bedienoberfläche ermöglicht die intuitive Handhabung und Abstimmung des Sounds in Echtzeit vom Fahrersitz aus, während der DSP per USB mit der Software verbunden ist. Bis zu 8 Kanäle können einzeln oder als 4 Kanalpaare konfiguriert werden. Neben den pro Kanal bis zu 48 dB pro Oktave einstellbaren Frequenzweichenfiltern Hoch-, Tief- und Bandpass können Parameter wie Phasendrehung und Laufzeitkorrektur einfach konfiguriert werden. Auf 6 Kanälen (A-F) steht jeweils ein 31-Band Equalizer zur Verfügung, für die Subwooferkanäle (G+H) kommt eine 11-Band Version zum Einsatz. Bis zu 10 verschiedene Konfigurationen können abgespeichert werden.

The M-CONTROL 2 software provides a variety of options to customize your sound system to the vehicle's acoustic. A clear and logically structured user interface allows intuitive handling and sound tuning in real time while the DSP is connected via USB to the software. All 8 channels can be configured individually or as 4 linked channel pairs. Besides the up to 48db adjustable crossover filters, high pass, low pass and band pass also parameters such as phase shift and time alignment per channel can be set easily. The 6 channels (A-F) feature each a 31-band equalizer and for the subwoofer channels (G+H) an 11-band version is available. Up to 10 different configurations can be stored.

MEDUSA M8 PREMIUM DSP PROCESSOR

- 8-Kanal DSP Prozessor 32bit / 192 kHz
- Verschraubte Cinchbuchsen
- Beleuchtetes Logo Badge
- Auto Turn-On, Hochpegeleingänge
- DSP Software M-CONTROL 2
- Fernbedienung mit LCD-Anzeige wie bei TRX Modellen

- *8-Channel DSP Processor 32bit / 192 kHz*
- *Screw-type RCA Jacks*
- *Illuminated logo badge*
- *Auto Turn-On, High Level Inputs*
- *DSP Software M-CONTROL 2*
- *Remote Controller with LCD Display like the TRX models*

Medusa
DSP PROCESSOR



M8DSP

8-Channel DSP Processor 32bit / 192 kHz

Auto-Turn-On, Highlevel Inputs,
6 RCA Inputs, 8 RCA Outputs, 8 RCA Inputs,
Optical Input (stereo PCM 2.0),
AUX Input 3,5 mm jack, 120 x 40 x 216 mm

MERCURY PERFORMANCE COMPACT

- Basspegel Kabelfernbedienung
- Kompakte Abmessungen, stapelbare Montage
- Schwerer Alu-Kühlkörper mit optimaler Kühlung
- Guss-Endteile mit integrierten Montagekanälen
- Rauscharme Eingangs-OPs (9V/μS Slew-Rate)
- Gekapselte Strom- und Lautsprecheranschlüsse

- *Bass Level Remote Controller*
- *Compact Footprint, stackable Installation Option*
- *Heavy Aluminium Heatsink for Perfect Cooling*
- *Die-cast End Caps with Concealed Mounting Channels*
- *Low-noise Input OP-Amps (9V/μS Slew-rate)*
- *Molded Power and Speaker Terminals*

Mercury

COMPACT AMPLIFIER

CAR&HIFI	Ausgabe 4/2011
Hifonics Mercury IV	
Spitzenklasse	1,4
Preis/Leistung: sehr gut	

autohifi TESTURTEIL
Hifonics Mercury IV
Oberklasse
56
Preis/Leistung ★★★★★
Ausgabe 3/2011



MERCURY IV

Class A/B 4-Channel Amplifier

4 x 75 W/RMS @ 4 Ω
 4 x 125 W/RMS @ 2 Ω
 2 x 250 W/RMS @ 4 Ω bridged
 2 x HP 10-1200 Hz, LP 30-150 Hz,
 Bass-Boost 0-12 dB, Bandpass-Mode, Dupe-Mode
 205 x 45 x 278 mm

Efficiency up to 64%

MERCURY BASS PACKAGE

MBP1000.4

4CH / Bass Power Package

Mercury IV

Class A/B 4-Channel Amplifier
 4 x 75 W/RMS @ 4 Ω
 4 x 125 W/RMS @ 2 Ω
 Bass Remote with Power/Protect LEDs
 Dimensions: 205 x 45 x 278 mm

MR8BP

Single Bandpass System
 20 cm (8") Subwoofer, 4 Ω
 300 W/RMS, 600 W/MAX,
 Dimensions: 390 x 290 x 370/300 mm

HF10WK

Amplifier Wire Kit
 1 x 10 mm² Power Cable, 5 m
 1 x 10 mm² Ground Cable, 1 m
 1 x RCA Patch chord with remote wire
 1 x Fuse Holder with 60 A Mini-ANL Fuse



VULCAN VXi START-UP

- Kraftvolle Ausgangsleistung
- Basspegel Kabelfernbedienung
- Beleuchtetes Logo Badge
- Seitliche Gravur mit Wattangabe
- Schwere Guss-Endteile

- Powerful output performance
- Bass Level Remote Controller
- Illuminated Logo Badge
- Laterally Engraving with Power Rating
- Heavy Die-cast Frames

Vulcan
AMPLIFIERS



VXi4002

Class A/B 2-Channel Amplifier

2 x 100/175 W/RMS @ 4/2 Ω
1 x 350 W/RMS @ 4 Ω bridged
HP 10-1200 Hz, LP 30-250 Hz
Bass-Boost 0-12 dB, Bandpass-Mode
268 x 65 x 297 mm

Efficiency up to 61%



VXi6002

Class A/B 2-Channel Amplifier

2 x 175/300 W/RMS @ 4/2 Ω
1 x 600 W/RMS @ 4 Ω bridged
HP 10-1200 Hz, LP 30-250 Hz
Bass-Boost 0-12 dB, Bandpass-Mode
268 x 65 x 365 mm

Efficiency up to 64%

VXi6404

Class A/B 4-Channel Amplifier

4 x 85/150 W/RMS @ 4/2 Ω
2 x 300 W/RMS @ 4 Ω bridged
2 x HP 10-1200 Hz, LP 30-250 Hz, Bass-Boost 0-12 dB
Bandpass-Mode, Dupe-Mode, CH2/4 Switch
268 x 65 x 405 mm

Efficiency up to 60%

VXi9404

Class A/B 4-Channel Amplifier

4 x 125/225 W/RMS @ 4/2 Ω
2 x 450 W/RMS @ 4 Ω bridged
2 x HP 10-1200 Hz, LP 30-250 Hz, Bass-Boost 0-12 dB
Bandpass-Mode, Dupe-Mode, CH2/4 Switch
268 x 65 x 445 mm

Efficiency up to 62%

VXi1201

Class A/B Mono Amplifier

1 x 350/600 W/RMS @ 4/2 Ω
LP 35-250 Hz, Bass-Boost 0-12 dB
Full Range Mode, Master/Slave-Mode
Phase-Shift 0-180°, Bass Boost 0 - 12 dB
268 x 65 x 366 mm

Efficiency up to 63%

VXi2000D

Class D Mono Amplifier

1 x 400/800/1000 W/RMS @ 4/2/1 Ω
LP 35 - 250 Hz, Subsonic 15 - 55 Hz
Master/Slave-Mode, Phase Shift 0 - 180°
Parametric Bass EQ
268 x 65 x 366 mm

Efficiency up to 82%

VXi3000D

Class D Mono Amplifier

1 x 500/1000/1500 W/RMS @ 4/2/1 Ω
LP 35 - 250 Hz, Subsonic 15 - 55 Hz
Master/Slave-Mode, Phase Shift 0 - 180°
Parametric Bass EQ
268 x 65 x 405 mm

Efficiency up to 84%



COLOSSUS CX HIGH END

- 100 mm (4") Doppelschwingspule
- Doppelte Zentrierung
- Eingenähte Litzen
- Verstärkte Alukalotte
- Dreifachmagnet 285 oz (8080 g)
- Aluminium-Gusskorb
- Chrom-Polplatten
- Doppelt vernähte Sicke
- X-Max. +/-25 mm
- Sound Quality und SPL

CX12D2

30 cm Subwoofer
2 + 2 Ω
4000 W/RMS, 8000 W/MAX
Ø 284 mm, ± 224 mm
SPL up to 151dB

CX15D2

38 cm Subwoofer
2 + 2 Ω
4500 W/RMS, 9000 W/MAX
Ø 358 mm, ± 260 mm
SPL up to 154dB

COLOSSUS SUBWOOFERS



CAR&HIFI TESTSIEGER
Ausgabe 4/2013
HiFonics Colossus CX12D2
Absolute Spitzenklasse
Preis/Leistung: sehr gut **1,3**

CAR&HIFI BEST PRODUCT
Ausgabe 4/2013
HiFonics Colossus CX12D2
Absolute Spitzenklasse
Preis/Leistung: sehr gut **1,2**

BEST PRODUCT
Absolute Spitzenklasse
CAR&HIFI 4/2013

MAXXIMUS MXZ HIGH END

- 76 mm (3") Doppelschwingspule
- Geschöpfte Papiermembran
- Doppelmagnet 132 oz (3700 g)
- Aluminium-Gusskorb
- Chrom-Polplatten
- X-Max. +/-20 mm
- Sound Quality und SPL

- 76 mm (3") Dual Voice Coil
- Non-pressed Paper Cone
- Dual Magnet 132 oz (3700 g)
- Cast Aluminum Basket
- Chromed Pole Plates
- X-Max. +/-20 mm
- Sound Quality und SPL

MAXXIMUS ENCLOSURES



MXZ12DUAL

Dual-Bandpass-System
2 x 30 cm Subwoofer, 4 + 4 Ω
2000 W/RMS, 4000 W/MAX
MDF cabinet with switchable
blue/white Illumination
88 x 39 x 55/39 cm
SPL up to 151dB

MXZ12BP

Single-Bassreflex-System
30 cm Subwoofer, 4 + 4 Ω
1000 W/RMS, 2000 W/MAX
MDF cabinet with switchable
blue/white Illumination
55 x 39 x 55/39 cm
SPL up to 148dB

CAR&HIFI TESTSIEGER
Ausgabe 4/2013
HiFonics Maximus MXZ12BP
Spitzenklasse
Preis/Leistung: sehr gut **1,1**

TESTSIEGER
Spitzenklasse 250 - 500 €
CAR&HIFI 4/2013

MXZ12R

Single-Bassreflex-System
30 cm Subwoofer, 4 + 4 Ω
1000 W/RMS, 2000 W/MAX
MDF Cabinet with Carbon-Look
52 x 39 x 53/37 cm
SPL up to 148dB

CAR&HIFI TESTSIEGER
Ausgabe 1/2015
HiFonics MXZ-12R
Spitzenklasse
Preis/Leistung: hervorragend **1,2**

TESTSIEGER
Spitzenklasse 250 - 500 €
CAR&HIFI 1/2015



MAXXIMUS MXS HIGH END

- 100 mm (4") Doppelschwingspule
- BASV Schwingspulenträger
- Dreifach Nomex-Spider
- Eingenähte Litzen
- Sandwich-Kevlar-Membran
- Dreifachmagnet 300 oz (8500 g)
- Magnetgröße: Ø220 x 60 mm
- Aluminium-Gusskorb
- Chrom-Polplatten
- Doppelt vernähte Sicke
- X-Max. +/-30 mm
- Sound Quality und SPL
- 100 mm (4") Dual Voice Coil
- BASV Voice Coil Former
- Triple Nomex Spider
- Sewn Lead Wire
- Sandwich-Kevlar-Membran
- Triple Magnet 300 oz (8500 g)
- Magnet Size: Ø220 x 60 mm
- Cast Aluminum Basket
- Chromed Pole Plates
- Double Stitched Surrounds
- X-Max. +/-30 mm
- Sound Quality and SPL

MAXXIMUS

SUBWOOFERS & ENCLOSURES

MXS12D2

30 cm Subwoofer, 2 + 2 Ω
1500 W/RMS, 3000 W/MAX
Ø 283 mm, ± 216 mm
SPL up to 149dB

MXS12R

Empty Bassreflex Enclosure
for MXS12D2, Volume 65 L
55 x 38 x 47/35 cm
(without MXS12D2 Woofer)



CAR&HIFI BESTES PRODUKT
Ausgabe 6/2009
HiFonics MXS12D2
Absolute Spitzenklasse
Preis/Leistung: sehr gut **1,5**

BESTES PRODUKT
Absolute Spitzenklasse
CAR&HIFI 6/2009

autohifi TESTURTEIL
HiFonics Maxximus MXS12D2
Absolute Spitzenklasse **73**
Preis/Leistung ★★★★★
Ausgabe 4/2009

ZEUS ZRX PREMIUM

- 50 mm (2") Schwingspule
- Aluminium-Gusskorb
- Geschöpfte Papiermembran
- Doppelmagnet 100 oz (2.835 g)
- Aluminium-Schwingspulenträger
- MDF-Gehäuse mit Logostick
- Weiße LED-Beleuchtung
- 50 mm (2") Voice Coil
- Die-cast Aluminium Basket
- Non-pressed Paper Cone
- Dual Magnet 100 oz (2.835 g)
- Aluminium Voice Coil Former
- MDF Cabinet with Logo Embroidery
- White LED Illumination



ZEUS

ENCLOSURES

NEW

ZRX12DUAL

Dual-Bandpass-System
2 x 30 cm Subwoofer 4+4 Ω
1000 W/RMS, 2000 W/MAX
88 x 38 x 49/39 cm
SPL up to 149dB

ZRX12BP

Single-Bandpass-System
30 cm Subwoofer 4 Ω
500 W/RMS, 1000 W/MAX
53 x 38 x 47/37 cm
SPL up to 146dB



autohifi TESTURTEIL
HiFonics ZRX12DUAL
Absolute Spitzenklasse **70**
Preis/Leistung ★★★★★
Ausgabe 4/2010

CAR&HIFI PREISTIPP
Ausgabe 1/2011
HiFonics ZRX12BP
Spitzenklasse **1,3**
Preis/Leistung: sehr gut

PREISTIPP
Spitzenklasse
CAR&HIFI 1/2011

ZEUS ZRX PREMIUM

- 76 mm (3") Schwingspule
 - 64 mm (2,5") Schwingspule (ZRX8D2)
 - 50 mm (2") Schwingspule (ZRX6D2)
 - Aluminium-Gusskorb
 - Schwere Doppelmagnet
 - Dreifacher Polycot-Spider
 - Blauer Magnet-Boot
 - Doppelt vernähte gerippte Sicke
- 76 mm (3") Voice Coil
 - 64 mm (2,5") Voice Coil (ZRX8D2)
 - 50 mm (2") Voice Coil (ZRX6D2)
 - Die-cast Aluminium Basket
 - Heavy Dual Magnet
 - Triple Polycot Spider
 - Blue Magnet Boot
 - Double Stitched Ribbed Surround

ZRX15D2

38 cm Subwoofer
1500 W/RMS, 3000 W/MAX, 2 + 2 Ω
Ø 352 mm, ± 201 mm
SPL up to 149dB

ZRX10D2

25 cm Subwoofer
800 W/RMS, 1600 W/MAX, 2 + 2 Ω
Ø 240 mm, ± 166 mm
SPL up to 146dB

ZRX6D2

16,5 cm Subwoofer
300 W/RMS, 600 W/MAX, 2 + 2 Ω
Ø 151 mm, ± 106 mm
SPL up to 141dB

ZRX12D2

30 cm Subwoofer
1000 W/RMS, 2000 W/MAX, 2 + 2 Ω
Ø 282 mm, ± 186 mm
SPL up to 147dB

ZRX8D2

20 cm Subwoofer
600 W/RMS, 1200 W/MAX, 2 + 2 Ω
Ø 184 mm, ± 144 mm
SPL up to 143dB



ZEUS

SUBWOOFERS

NEW



ZEUS ZRX PREMIUM

ZRX220A

Active Dual-Bassreflex with
integrated Class A/B Amplifier
2 x 20 cm Subwoofer
300 W/RMS, 600 W/MAX
28 x 10,3 x 58 cm

ZEUS

ACTIVE SUBWOOFER
SYSTEM

- Basspegel Kabelfernbedienung
- Auto Turn-On Funktion über High-Level-Inputs
- Schwere Alu-Kühlkörper mit optimaler Kühlung
- Metall-Schutzgitter
- Downfire Box (als doppelter Boden im Kofferraum nutzbar)
- Bass Level Remote Controller
- Auto Turn-On Function via High-Level-Inputs
- Heavy Aluminium Heatsink for Perfect Cooling
- Metal Protection Grilles
- Downfire Box (use as double boot floor in the trunk)



ATLAS ATL / AS PREMIUM

- 64 mm (2,5") Schwingspule
- Aluminium-Gusskorb
- Extra-steife PP-Membranstruktur
- Doppelmagnet 140 oz (3.690 g)
- Aluminium-Schwingspulenträger

- 64 mm (2,5") Voice Coil
- Die-cast Aluminium Basket
- Extra-rigid PP-Cone structure
- Dual Magnet 140 oz (3.690 g)
- Aluminium Voice Coil Former

ATL12D2

30 cm Subwoofer
600 W/RMS, 1200 W/MAX., 2 + 2 Ω
Ø 287 mm, ± 184 mm
SPL up to 146dB

ATL12BP-E

Empty Enclosure
for ATLAS ATL12D2
30cm Subwoofers
60 x 39 x 48/33 cm



ATLAS

SUBWOOFERS &
ENCLOSURES

- 50 mm (2") Schwingspule
- Aluminium-Gusskorb
- Doppelmagnet 100 oz (2.835 g)
- Aluminium-Schwingspulenträger
- MDF-Gehäuse mit Logostick
- Weiße LED-Beleuchtung
- Verspiegelte Innenkammer (ATL12BPS)
- Aluminium Reflexports (ATL12BPS)
- Seitenwände in Metall-Look (ATL12BPS)

- 50 mm (2") Voice Coil
- Die-cast Aluminium Basket
- Dual Magnet 100 oz (2.835 g)
- Aluminium Voice Coil Former
- MDF Cabinet with Logo Embroidery
- White LED Illumination
- Mirrored Interior Chamber (ATL12BPS)
- Aluminium Reflex Ports (ATL12BPS)
- Metal-look Sidewalls (ATL12BPS)



AS12BP

Single Bandpass System
30 cm Subwoofer, 4 Ω
500 W/RMS, 1000 W/MAX
60 x 38 x 44/31 cm
SPL up to 146dB

ATL12BPS

Single Bandpass System
30 cm Subwoofer, 4 Ω
500 W/RMS, 1000 W/MAX
60 x 38 x 44/31 cm
SPL up to 146dB



TITAN TS PERFORMANCE

- 39 mm (1.5") Schwingspule
- PP-Injection-Cone
- Chrom-Bügel
- Frontblende in Carbon-Look
- Strömungsoptimierter Reflex-Kanal
- MDF-Gehäuse mit Logostick
- 39 mm (1.5") Voice Coil
- PP-Injection-Cone
- Chrome-Bars
- Carbon-Look
- Flow-optimized Reflex Channel
- MDF Cabinet with Logo Embroidery

TS200R

Single-Bassreflex-System
20 cm Subwoofer, 4 Ω
200 W/RMS, 400 W/MAX
34 x 29 x 31/25 cm

TITAN

ENCLOSURES

TS250R

Single-Bandpass-System
25 cm Subwoofer, 4 Ω
300 W/RMS, 600 W/MAX
40 x 32 x 36/28 cm

TS300R

Single-Bandpass-System
30 cm Subwoofer, 4 Ω
400 W/RMS, 800 W/MAX
44 x 36 x 40/31 cm



TITAN TD / TDA PERFORMANCE

- 39 mm (1.5") Schwingspule
- PP-Injection-Cone
- Chrom-Bügel
- Frontblende in Carbon-Look
- Strömungsoptimierter Kanal
- MDF-Gehäuse mit Logostick
- 39 mm (1.5") Voice Coil
- PP-Injection-Cone
- Chrome-Bars
- Carbon-Look
- Optimized Channel
- MDF-cabinet with Logo-Stick

TD200R

Dual-Bassreflex-System
20 cm Subwoofer, 4+4 Ω
400 W/RMS, 800 W/MAX
65 x 29 x 31/25cm

TD250R

Dual-Bassreflex-System
25 cm Subwoofer, 4+4 Ω
600 W/RMS, 1200 W/MAX
77 x 32 x 36/28 cm



TITAN

ENCLOSURES



TDA200R

Active Dual-Bassreflex with integrated Class D Amplifier
2 x 20 cm Subwoofer
300 W/RMS, 600 W/MAX
65 x 29 x 31/25 cm

TDA250R

Active Dual-Bassreflex with integrated Class D Amplifier
2 x 25 cm Subwoofer
300 W/RMS, 600 W/MAX
77 x 32 x 36/28 cm



MERCURY MR PERFORMANCE

- 50 mm (2") Schwingspule
- Verchromter Stahlkorb
- Geschöpfte Papiermembran
- MDF Gehäuse mit umschaltbarer weißer/blauer Beleuchtung

- 50 mm (2") Voice Coil
- Chrome steel basket
- Non-pressed Paper Cone
- MDF Cabinet with switchable blue/white Illumindation

MR8BP

Single-Bandpass-System
20 cm Subwoofer
300 W/RMS, 600 W/MAX, 4 Ω
39 x 29 x 37/30 cm
SPL up to 141dB

MR10BP

Single-Bandpass-System
25 cm Subwoofer
400 W/RMS, 800 W/MAX, 4 Ω
43 x 33 x 42/34 cm
SPL up to 144dB

MR8DUAL

Dual-Bandpass-System
2 x 20 cm Subwoofer, dual ports
600 W/RMS, 1200 W/MAX, 4 + 4 Ω
Front or rear reflex port (FlexPort)
78 x 29 x 39/29 cm
SPL up to 144dB

MR10DUAL

Dual-Bandpass-System
2 x 25 cm Subwoofer, dual ports
800 W/RMS, 1600 W/MAX, 4 + 4 Ω
82 x 33 x 43/35 cm
SPL up to 147dB



Mercury
ENCLOSURES



BEST PRODUCT
Oberklasse 125 - 250 €
CAR & HIFI 6/2012

CAR & HIFI BEST PRODUCT
Ausgabe 6/2012
Hifonics MR10BP
Oberklasse
Preis/Leistung: sehr gut **1,2**

CAR & HIFI Ausgabe 6/2012
Hifonics MR10DUAL
Spitzenklasse
Preis/Leistung: sehr gut **1,2**

CAR & HIFI TESTURTEIL
Ausgabe 2/2016
Hifonics MR8DUAL
Spitzenklasse
Preis/Leistung: sehr gut **1,4**

BRUTUS BX / BXi PERFORMANCE

- 50 mm (2") Schwingspule
- Verchromter Blade-Grill
- Blaue Kalotten-Beleuchtung
- MDF Gehäuse mit weißer LED-Beleuchtung (Bandpass)

- 50 mm (2") Voice Coil
- Chrome Blade Grille
- Blue Dustcap Illumination
- MDF Cabinet with white LED Illumindation (Bandpass)



BRUTUS
ENCLOSURES



BX300

Single Bassreflex Tube
30 cm Subwoofer, 4 Ω
400 W/RMS, 800 W/MAX
Ø 34,5 x 67 cm
SPL up to 145dB

BXi12DUAL

Dual-Bandpass-System
2 x 30 cm Subwoofer, 4+4 Ω
800 W/RMS, 1600 W/MAX
86 x 38 x 48/38 cm
SPL up to 145dB

BXi12BP

Single-Bandpass-System
30 cm Subwoofer, 4 Ω
400 W/RMS, 800 W/MAX
56 x 38 x 45/32 cm
SPL up to 148dB



TITAN TXi COMPACT

- 50 mm (2") Doppelschwingspule
- Aluminium-Gusskorb
- Chrom-Polplatten
- MDF Gehäuse mit umschaltbarer weiße/blauer Beleuchtung
- Hochwertiger Teppich mit Logo-Stick
- 50 mm (2") Dual Voice Coil
- Cast Aluminum Basket
- Chromed Pole Plates
- MDF Cabinet with switchable blue/white Illumination
- High Grade Carpet with Logo Embroidery



TX8BPi

Single Bandpass System

20 cm Subwoofer, 4 Ω
300 W/RMS, 600 W/MAX
40 x 29 x 37/30 cm
SPL up to 141dB

TITAN
ENCLOSURES

TRITON TR COMPACT

- Speziell entwickelter Subwoofer in Flachbauweise
- Kompaktes MDF-Gehäuse
- Schutzgitter
- Hochwertiger Teppich mit Logo-Sticks
- Specially engineered shallow Subwoofer
- Compact MDF Cabinet
- Protection Grille
- High Grade Carpet with Logo Embroideries



TRS165.2

Dual Vented Enclosure

2 x 16,5 cm Subwoofer, 4 Ω
200 W/RMS, 400 W/MAX
61 x 30 x 14 / 11 cm
SPL up to 135dB

TRS250

Single Sealed Enclosure

25 cm Subwoofer, 4 Ω
300 W/RMS, 600 W/MAX
50 x 32 x 17 / 10 cm
SPL up to 136dB

Triton
ENCLOSURES

VULCAN VX COMPACT

- Speziell entwickelter 6 x 9 er Subwoofer mit Papiermembran
- Kompaktes MDF-Gehäuse
- Schutzgitter
- Hochwertiger Teppich mit Logo-Stick
- Specially engineered 6 x 9 Subwoofer with paper cone
- Compact MDF cabinet
- Protection grille
- High grade carpet with logo embroidery



VX690R

Single Bassreflex System

6 x 9er (15 x 23 cm) Subwoofer, 4 Ω
200 W/RMS, 400 W/MAX
45,5 x 28,5 x 27/23 cm
SPL up to 135dB



VX690A

Active Single Bassreflex System with integrated Class D Amplifier

6 x 9er (15 x 23 cm) Subwoofer,
150 W/RMS, 300 W/MAX
LP Crossover 50-150 Hz
Bass Boost 0-12dB @ 45 Hz
Subsonic 25 Hz fixed
Phase Switch 0/180°
Auto Turn-On
High or Low Level Inputs
Detachable Connectors
Bass Remote included
45,5 x 28,5 x 27/23 cm

Vulcan
ENCLOSURES

TRITON TR COMPACT

- Basspegel Kabelfernbedienung
- Auto Turn-On Funktion über High-Level-Inputs
- Schwerer Alu-Kühlkörper mit optimaler Kühlung
- Zwei seitlich angebrachte Passivwoofer
- *Bass Level Remote Controller*
- *Auto Turn-On Function via High-Level-Inputs*
- *Heavy Aluminium Heatsink for Perfect Cooling*
- *Two lateral Passive Woofers*



TR202A

Active Subwoofer System with integrated Class AB Amplifier

20 cm (8") Woofer
100 W/RMS, 200 W/MAX
LP Crossover 50-150 Hz
Bass Boost 0-18dB @ 45Hz
Phase Switch 0/180°
High or Low Level Inputs
Subsonic 20 Hz fixed
245 x 75 x 345 mm

Triton
ACTIVE SUBWOOFER



ZEUS ZX COMPACT

- Basspegel Kabelfernbedienung
- Auto Turn-On Funktion über High-Level-Inputs
- Integrierte Class D Endstufe
- Mit gegenüberliegendem Passivwoofer
- *Bass Level Remote Controller*
- *Auto Turn-On Function via High-Level-Inputs*
- *Integrated Class D Amplifier*
- *With opposite Passive Woofer*

ZX82A

Active Subwoofer System with integrated Class D Amplifier

20 cm (8") Woofer with passive radiator
200 W/RMS, 400 W/MAX
LP Crossover 50-150 Hz, Phase Shift 0/180°
Bass-Boost 0-12dB @ 45Hz
Auto Turn-On, High or Low Level Inputs
245 x 245 x 245 mm



NEW



ZEUS
ACTIVE SUBWOOFER

MERCURY MRX COMPACT

- Basspegel Kabelfernbedienung
- Auto Turn-On Funktion über High-Level-Inputs
- Integrierte Class D Endstufe
- Schwerer Alu-Kühlkörper mit optimaler Kühlung
- *Bass Level Remote Controller*
- *Auto Turn-On Function via High-Level-Inputs*
- *Integrated Class D Amplifier*
- *Heavy Aluminium Heatsink for Perfect Cooling*

Mercury
ACTIVE SUBWOOFER

MRX168A

Active Subwoofer System with integrated Class A/B Amplifier

15 x 20 cm (6 x 8") Woofer
LP Crossover 50-150 Hz, Phase Shift 0/180°
Bass-Boost 0-12dB @ 50Hz, Subsonic 30 Hz
Auto Turn-On, High or Low Level Inputs
260 x 74 x 195 mm

NEW





MAXXIMUS MX HIGH END

Tiefmitteltöner:

- Verwindungssteifer Aluminium-Gusskorb
- Gitterabdeckung mit Aluminium-Trimming
- Aluminium-Membran mit hoher Eigensteifigkeit
- Phase-Plug aus Vollkupfer
- 37 mm Schwingspule auf Kaptonträger
- 90 mm Ferrit-Magnet mit Protektor
- Kupferkappe auf Polkern zur Impedanzlinearisierung

Frequenzweiche mit Bi-Amping Option:

- 12 dB im Bassweig / 18 dB im Hochtonweig
- 2-fach Pegelanpassung im Mitteltonbereich
- 5-fach Pegelabsenkung im Hochtonbereich

Tweeter:

- 28 mm, Neodym-Dual-Magnet-Antrieb
- Gewebe-Membran mit optimierter Geometrie
- Aluminium-Gehäuse mit angekoppeltem Volumen

Woofer:

- Warp-resistant Aluminum Die-cast Basket
- Mesh Grille with Aluminum-Trim-Ring
- High-Rigidity-Aluminum-Cone
- Full Copper Phase Plug
- 37 mm Voice Coil on Kapton Former
- 90 mm Ferrite-Magnet with Protector
- Polecore with Copper Hood for linear Impedance

Crossover with bi-Amping option:

- 12 dB in the Low Circuit / 18 dB in the High Circuit
- 2-fold Level Adjustment Switch in the Mid Range
- 5-fold Level Adjustment Switch in the High Range

Tweeter:

- 28 mm, Neodymium-Dual-Magnet-Driver
- Silk-Dome-Cone with optimized Geometry
- Aluminum Housing with coupled Volume



MX6.2C

16,5 cm 2-Way Compo-System
 125 W/RMS, 250 W/MAX.
 4 Ω, SPL 91,5 dB / 2,83 V / 1 m
 Woofer: Ø 144 mm, ± 65 mm
 Tweeter: Ø 47 mm, ± 28 mm

MAXXIMUS SPEAKERS

MADE IN GERMANY

CAR & HIFI Ausgabe 1/2009
 Hifonics MX6.2C
 Absolute Spitzenklasse
 Preis/Leistung: sehr gut **1,4**

KLANGREFERENZ
 Absolute Spitzenklasse
 CAR & HIFI 1/2009

autohifi TESTURTEIL
 Hifonics Maxximus MX6.2C
 Referenzklasse **83**
 Preis/Leistung ★★★★★
 Ausgabe 3/2009

CAR & HIFI TESTSIEGER
 Ausgabe 1/2012
 Hifonics MX6.2C / MX6.2T
 Spitzenklasse
 Preis/Leistung: sehr gut **1,2**

TESTSIEGER
 Spitzenklasse 250 - 500 €
 CAR & HIFI 1/2012

ATLAS AS PREMIUM

- Verwindungssteifer Stahlkorb
- Aluminium-Membran mit hoher Eigensteifigkeit
- Ferrit-Magnet mit Protektor
- 25 mm Gewebe-Hochtöner
- 18dB Frequenzweiche mit 3-fach Hochtonpegel-Absenkung (nur bei Kompo-System)

- Warp-resistant Steel Basket
- Aluminum-Cone with very high Rigidity
- Ferrite-Magnet with Protector
- Silk Dome Tweeter
- 18dB Crossover with 3-way Tweeter Gain Adjustment (only Compo-System)

AS6.2C

16,5 cm 2-Way Compo-System
 100 W/RMS, 200 W/MAX., 4 Ω
 Ø 144 mm, ± 65 mm

AS6.2T

25 mm Silk-Dome-Tweeters
 incl. 12dB In-Line Crossovers
 100 W/RMS, 200 W/MAX., 4 Ω

AS42

10 cm 2-Way Coaxials
 60 W/RMS, 120 W/MAX., 4 Ω
 Ø 96 mm, ± 50 mm

AS52

13 cm 2-Way Coaxials
 80 W/RMS, 160 W/MAX., 4 Ω
 Ø 117 mm, ± 59 mm

AS62

16,5 cm 2-Way Coaxials
 100 W/RMS, 200 W/MAX., 4 Ω
 Ø 143 mm, ± 60 mm

Atlas SPEAKERS



ZEUS ZX / ZS PREMIUM

- Gusskorb (ZX)
- Glasfiber-Papier Honeycomb Cone
- 25 mm Gewebe Neodym-Hochtöner mit hinterer Resonanzkammer
- 12dB Frequenzweiche mit Pegelinstellung
- inkl. Abdeckgitter und Magnetschutz

- Cast Basket (ZX)
- Glasfiber Paper Honeycomb Cone
- 25 mm Silk Neodymium-Tweeter with rear Resonance Chamber
- 12dB X-Over with Tweeter Level Adjustment
- incl. Grilles and Magnet Protector



ZX6.2C

16,5 cm 2-Way Compo-System
125 W/RMS, 250 W/MAX., 4 Ω
Ø 144 mm, ± 70 mm

ZX6.2W

16,5 cm Kickbass-Speakers
125 W/RMS, 250 W/MAX., 4 Ω
Ø 144 mm, ± 70 mm

ZX6.2T

25 mm Silk-Dome-Tweeters
125 W/RMS, 250 W/MAX., 4 Ω
Ø 44 mm, ± 22 mm

ZXM3

60 mm Midrange-Woofers
125 W/RMS, 250 W/MAX., 4 Ω
Ø 57 mm, ± 32 mm



Zeus
SPEAKERS

NEW

ZS62

16,5 cm 2-Way Coaxials
100 W/RMS, 200 W/MAX., 4 Ω
Ø 144 mm, ± 64 mm

ZS52

13 cm 2-Way Coaxials
80 W/RMS, 160 W/MAX., 4 Ω
Ø 115 mm, ± 54 mm

ZS42

10 cm 2-Way Coaxials
60 W/RMS, 120 W/MAX., 4 Ω
Ø 96 mm, ± 52 mm

ZSW6

16,5 cm Kickbass-Speakers
100 W/RMS, 200 W/MAX., 4 Ω
Ø 144 mm, ± 64 mm

ZSW5

13 cm Kickbass-Speakers
80 W/RMS, 160 W/MAX., 4 Ω
Ø 115 mm, ± 54 mm

ZSW4

10 cm Midrange-Woofers
60 W/RMS, 120 W/MAX., 4 Ω
Ø 96 mm, ± 52 mm



BRUTUS BRX PERFORMANCE

- Glasfiber Membrane
- Ultraflache durch innenliegende Magnete
- 20 mm Gewebe-Hochtöner
- Separate Inline-Weichen

- Glasfiber Cone
- Internal Ferrite Magnet
- 20 mm Silk-Dome-Tweeters
- Separated Inline Crossovers

ULTRA
FLAT



BRX6.2C

16,5 cm 2-Way Compo-System
100 W/RMS, 200 W/MAX., 4 Ω
Ø 144 mm, ± 42 mm

BRX5.2C

13 cm 2-Way Compo-System
90 W/RMS, 180 W/MAX., 4 Ω
Ø 117 mm, ± 36 mm

NEW



BRUTUS
SPEAKERS



BRX62

16,5 cm 2-Way Coaxials
90 W/RMS, 180 W/MAX., 4 Ω
Ø 144 mm, ± 44 mm

BRX52

13 cm 2-Way Coaxials
80 W/RMS, 160 W/MAX., 4 Ω
Ø 117 mm, ± 38 mm

BRX42

10 cm 2-Way Coaxials
60 W/RMS, 120 W/MAX., 4 Ω
Ø 94 mm, ± 31 mm

TITAN TS PERFORMANCE

- Verwindungssteifer Stahlkorb
- Verstärkte Polymembran
- Rubberboot Magnet-Protector
- 25 mm Gewebe-Hochtöner und 12dB Frequenzweiche (nur bei Kompo-Systeme)
- Mylar-Mittel-/Hochtöner (Koaxe)

- *Warp-resistant Steel Basket*
- *Reinforced Poly Cone*
- *Rubberboot Magnet Protector*
- *Silk-Dome-Tweeters and 12dB Crossover (only Compo-Systems)*
- *Mylar Midrange/Tweeter (Coaxials)*

TS5.2C

13 cm 2-Way Compo-System
100 W/RMS, 200 W/MAX, 4 Ω
Ø 120 mm, ± 55 mm

TS6.2T

25 mm Silk-Dome-Tweeters
125 W/RMS, 250 W/MAX, 4 Ω
12dB In-Line Crossover

TS42

10 cm 2-Way Coaxials
60 W/RMS, 120 W/MAX, 4 Ω
Ø 98 mm, ± 44 mm

TS52

13 cm 2-Way Coaxials
75 W/RMS, 150 W/MAX, 4 Ω
Ø 120 mm, ± 55 mm

TS62

16,5 cm 2-Way Coaxials
90 W/RMS, 180 W/MAX, 4 Ω
Ø 145 mm, ± 60 mm

TS6.2C

16,5 cm 2-Way Compo-System
125 W/RMS, 250 W/MAX, 4 Ω
Ø 145 mm, ± 60 mm

TS6.2W

16,5 cm Kickbass-Speakers
100 W/RMS, 200 W/MAX, 4 Ω
Ø 145 mm, ± 60 mm

TS462

10 x 15 cm (4 x 6er) 2-Way Coaxials
70 W/RMS, 140 W/MAX, 4 Ω
Ø 144 x 89 mm, ± 50 mm

TS572

13 x 18 cm (5 x 7er) 2-Way Coaxials
90 W/RMS, 180 W/MAX, 4 Ω
Ø 180 x 126 mm, ± 61 mm

TS693

16 x 23 cm (6 x 9er) 3-Way Triaxials
125 W/RMS, 250 W/MAX, 4 Ω
Ø 222 x 152 mm, ± 80 mm



TITAN
SPEAKERS

VULCAN VX START-UP

- Verwindungssteifer Stahlkorb
- Verstärkte Polymembran
- Rubberboot Magnet-Protector
- 25 mm Gewebe-Hochtöner und 12dB Frequenzweiche mit Drehregler zur Hochtonabsenkung (nur bei Kompo-System, nicht bei VX6.2E)
- Mylar-Mittel-/Hochtöner (Koaxe)

- *Warp-resistant Steel Basket*
- *Reinforced Poly Cone*
- *Rubberboot Magnet Protector*
- *Silk-Dome-Tweeters and 12dB Crossover with Rotary Control for Tweeter Attenuation (only Compo-Systems, not VX6.2E)*
- *Mylar Midrange/Tweeter (Coaxialss)*

VX5.2E

13 cm 2-Way Compo-System
80 W/RMS, 160 W/MAX, 4 Ω
Ø 116 mm, ± 55 mm

VX6.2W

16,5 cm Kickbass-Speakers
100 W/RMS, 200 W/MAX, 4 Ω
Ø 143 mm, ± 58 mm

VX6.2T

25 mm Silk-Dome-Tweeters with In-Line Crossover
100 W/RMS, 200 W/MAX, 4 Ω

VX52

13 cm 2-Way Coaxials
75 W/RMS, 150 W/MAX, 4 Ω
Ø 116 mm, ± 53 mm

VX6.2C

16,5 cm 2-Way Compo-System
100 W/RMS, 200 W/MAX, 4 Ω
Ø 143 mm, ± 58 mm

VX6.2E

16,5 cm 2-Way Compo-System with In-Line Crossover
100 W/RMS, 200 W/MAX, 4 Ω
Ø 143 mm, ± 58 mm

VX42

10 cm 2-Way Coaxials
50 W/RMS, 100 W/MAX, 4 Ω
Ø 95 mm, ± 47 mm

VX62

16,5 cm 2-Way Coaxials
90 W/RMS, 180 W/MAX, 4 Ω
Ø 143 mm, ± 58 mm



Vulcan
SPEAKERS

VX693

16 x 23 cm (6 x 9er) 3-Way Triaxials
125 W/RMS, 250 W/MAX, 4 Ω
Ø 222 x 151 mm, ± 81 mm

POWER CAPACITORS

HFC1000

1.0 Farad Capacitor

3-stelliger Voltmeter in blau
Anschluss für Einschaltleitung (Remote)
Ø 76 x 260 mm

3-digit Voltmeter in blue
Terminal for the Remote Wire
Ø 76 x 260 mm



HFC2000

2.0 Farad Capacitor

3-stelliger Voltmeter in blau
Anschluss für Einschaltleitung (Remote)
Ø 76 x 305 mm

3-digit Voltmeter in blue
Terminal for the Remote Wire
Ø 76 x 305 mm

AMPLIFIER ACCESSORIES



HCV4

Intelligent High To Low Level Adapter

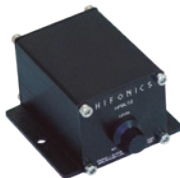
4-Kanal Konverter (Front & Rear), Einschaltsignal (Remote), Pegelregler mit Clipping LED, Schutzschaltung, sehr niedriger Ruhestrom, 10-16V, Signalrauschabstand > 95dB, Slew rate 9V/µS, Kanaltrennung 80dB, 5 Hz - 60 KHz (+/- 1 dB), Cinch-Ausgang (unbalanced) 2,36Vrms, inkl. Samtbeutel, 62 x 70 x 21mm

4-Channel Converter (front & rear), Turn-On Signal (remote), Level Controllers with Clipping LED, Protection Circuit, very low Idle Current, 10-16V, Signal to Noise Ratio > 95dB, Slew-rate 9V/µS, Channel Separation 80dB, 5 Hz - 60 KHz (+/- 1 dB), RCA Outputs (unbalanced) 2,36Vrms, incl. Velvet Bag, 62 x 70 x 21mm

HF-BLT2

Balanced Line Transmitter

Für Mono/2-Kanal-Amps mit symmetrischen 5-PIN DIN-Eingängen, mit 1 x 5 m Kabel
For Mono and 2-Channel Amps with Balanced 5-PIN DIN-Inputs, with 5 m Cable



HF-BLT4

Balanced Line Transmitter

Für alle 4-Kanal-Amps mit symmetrischen 5-PIN DIN-Eingängen, mit 2 x 5 m Kabel
For all 4-Channel Amps with Balanced 5-PIN DIN-Inputs, with 2 x 5 m Cable



HF-HLA

HIGH LEVEL SPEAKER ADAPTER

Hochpegel-Adapter für den Anschluss von Lautsprecherkabeln an die Cinch-Eingänge aller TR, ZRX, BRX, ARX, TSi Amps.

High Level Adapter to connect Loudspeaker Cables with the RCA inputs on all TR, ZRX, BRX, ARX, TSi amplifiers.

AMPLIFIER INTERCONNECTION



HF10WK

Performance Kabel-Set 1000 Watt

- 1 x 10 mm² Stromkabel (rot), 5 m
- 1 x 10 mm² Massekabel (rauchgrau), 1 m
- 1 x Verdrilltes Cinch Kabelpaar (transparent silber), doppelt abgeschirmt, gekapselte Stecker, Steuerleitung, 5 m
- 1 x Mini-ANL Sicherungshalter mit 60 A Sicherung

Performance Wire Kit 1000 Watts

- 1 x 10 mm² Power Cable (red), 5 m
- 1 x 10 mm² Ground Cable (smoke grey), 1 m
- 1 x RCA Twisted Cable Pair (clear silver), Double Shielded, Molded Jacks, Remote Wire, 5 m
- 1 x Mini-ANL Fuse Holder with 60 A Fuse

HF16WK

Premium Kabel-Set 1300 Watt

- 1 x 16 mm² Stromkabel (rot), 5 m
- 1 x 16 mm² Massekabel (rauchgrau), 1 m
- 1 x Verdrilltes Cinch Kabelpaar (transparent silber), 3-fach abgeschirmt, richtungsgebunden, Metallstecker, Steuerleitung, 5 m
- 1 x Mini-ANL Sicherungshalter mit 80 A Sicherung

Premium Wire Kit 1300 Watts

- 1 x 16 mm² Power Cable (red), 5 m
- 1 x 16 mm² Ground Cable (smoke grey), 1 m
- 1 x RCA Twisted Cable Pair (clear silver), Triple Shielded, Directional Ground Loop, Metal Jacks, Remote Wire, 5 m
- 1 x Mini-ANL Fuse Holder with 80 A Mini-ANL Fuse

HF20WK

Premium Kabel-Set 1400 Watt

- 1 x 20 mm² Stromkabel (rot), 5 m
- 1 x 20 mm² Massekabel (rauchgrau), 1 m
- 1 x Verdrilltes Cinch Kabelpaar (transparent silber), 3-fach abgeschirmt, richtungsgebunden, Metallstecker, Steuerleitung, 5 m
- 1 x Mini-ANL Sicherungshalter mit 90 A Sicherung

Premium Wire Kit 1400 Watts

- 1 x 20 mm² Power Cable (red), 5 m
- 1 x 20 mm² Ground Cable (smoke grey), 1 m
- 1 x RCA Twisted Cable Pair (clear silver), Triple Shielded, Directional Ground Loop, Metal Jacks, Remote Wire, 5 m
- 1 x Mini-ANL Fuse Holder with 90 A Mini-ANL Fuse



HF35WK

Premium Kabel-Set 2000 Watt

- 1 x 35 mm² Stromkabel (rot), 5 m
- 1 x 35 mm² Massekabel (rauchgrau), 1 m
- 1 x Verdrilltes Cinch Kabelpaar (transparent silber), 3-fach abgeschirmt, richtungsgebunden, Metallstecker, Steuerleitung, 5 m
- 1 x Mini-ANL Sicherungshalter mit 150 A ANL Sicherung

Premium Wire Kit 2000 Watts

- 1 x 35 mm² Power Cable (red), 5 m
- 1 x 35 mm² Ground Cable (smoke grey), 1 m
- 1 x RCA Twisted Cable Pair (clear silver), Triple Shielded, Directional Ground Loop, Metal Jacks, Remote Wire, 5 m
- 1 x Mini-ANL Fuse Holder with 150 A Fuse

HF25WK

Premium Kabel-Set 1500 Watt

- 1 x 25 mm² Stromkabel (rot), 5 m
- 1 x 25 mm² Massekabel (rauchgrau), 1 m
- 1 x Verdrilltes Cinch Kabelpaar (transparent silber), 3-fach abgeschirmt, richtungsgebunden, Metallstecker, Steuerleitung, 5 m
- 1 x Mini-ANL Sicherungshalter mit 100 A Sicherung

Premium Wire Kit 1500 Watts

- 1 x 25 mm² Power Cable (red), 5 m
- 1 x 25 mm² Ground Cable (smoke grey), 1 m
- 1 x RCA Twisted Cable Pair (clear silver), Triple Shielded, Directional Ground Loop, Metal Jacks, Remote Wire, 5 m
- 1 x Mini-ANL Fuse Holder with 100 A Fuse



AMPLIFIER INTERCONNECTION



HFP5RCA

Verdrilltes Premium Cinch Kabelpaar

Transparent silber, 3-fach abgeschirmt, Metallstecker, richtungsgebunden, Steuerleitung, 5 m

Premium RCA twisted audio cable pair

Clear silver, Triple Shielded, Directional Ground Loop, Metal Jacks, Remote Wire, 5 m



HF5RCA

Verdrilltes Cinch Kabelpaar

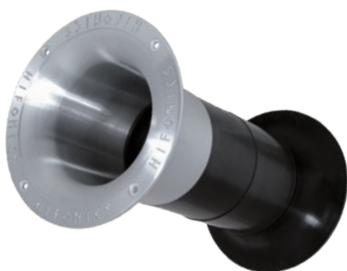
Transparent silber, doppelt abgeschirmt, gekapselte Stecker, Steuerleitung, 5 m

RCA twisted audio cable pair

Clear silver, Double Shielded, Molded Jacks, Remote Wire, 5 m



SPEAKER ACCESSORIES



HFP100

Edles Reflexrohr aus gedrehtem Aluminium

mit HiFonics-Logos für die Nachveredelung von Gehäusesubs.
Durchmesser 158 mm, Rohrdurchmesser 94 mm, Länge 263 mm

Precious Diamond-Cut-Aluminium-Reflexport

*with HiFonics-Logos for refining all Subwoofer Enclosures.
Diameter 158 mm, Tube Diameter 94 mm, Length 263 mm*



GRA12

Metall-Grill in Chrom-Look

Für 30 cm Subwoofer mit HiFonics Logo-Stanzung

Metal Chrome Grillef

For 30 cm Subwoofers with HiFonics Logo Stamping



HF16.2AT

25 mm Gewebehohtöner in Kugelaufbaugehäusen

125 W/RMS, 250 W/MAX, 4 Ω, blanke Aluminium-Aufbaugehäuse
12 dB In-Line Kabelweiche für Hochtöner und Mitteltöner

25 mm Silk-Dome-Tweeters in Bullet Housings

*125 W/RMS, 250 W/MAX, 4 Ω, Plain Aluminum Bullet Housings
12 dB In-Line Crossovers for Tweeter and Midbass*



HFG5

Zwei Grills in Chrom-Look

für 13 cm Lautsprecher mit
HiFonics Logo-Prägung

Two Chrome-Finish Grilles

*for 13 cm Loudspeakers
with HiFonics Logo Embossing*

POWER FROM THE GODS

DISTRIBUTORE ESCLUSIVO PER L'ITALIA
ALKOR GROUP S.R.L.

Via G. Verdi, 1/C 26027 Rivolta d'Adda (CR)
P.IVA 06815000960 - info@alkorgroup.com
Telefono 0363/78515 - Fax 0363/371666