

# ALPINE

Driving Mobile Media Innovation



GENERAL CATALOGUE 2018-2019



# ALPINE STYLE

# Premium Solutions for Audi



YouTube

## For Audi A4 / A5

If you own an A4 or A5 without original navigation system then this is the perfect upgrade for your car. Add IGO Primo Nextgen navigation, Apple CarPlay and Android Auto compatibility, Bluetooth®, DAB+ digital radio, USB video, a 7-inch high-res touch screen and more to your Audi.



Compatible	A4 / S4 / RS4 (8K), A5 / S5 / RS5 (8T) and A5 cabriolet (8F) LHD model year 2007 - 2015 • RHD version available as well
Not compatible	Vehicles with MMI navigation and navigation plus

### X702D-A4 Premium Navigation System



## For Audi Q5

The X702D-Q5 gives Audi Q5 owners access to a wide media compatibility, cutting-edge navigation technology and 7-inch high-res touch-screen operation. All system components are designed to fit perfectly in existing installation locations and integrate with the vehicle's electronic systems.



Compatible	Q5 / SQ5 (8R) model year 2009 - 2016
Not compatible	Vehicles with MMI navigation or navigation plus • RHD version not available

### X702D-Q5 Premium Infotainment System







## For Volkswagen Golf 7

The 9-inch Alpine Style System for Golf 7: you have the choice between a model with built-in iGO Primo Nextgen navigation and a model without navigation. Both systems feature Android Auto and Apple CarPlay and integrate in the Golf 7.



Compatible	Golf 7 / GTI / GTD / R (AU) model year 2012 - 2016
Not compatible	Golf 7 GTE / eGolf / Sportsvan

### X902D-G7 Premium Navigation System



### i902D-G7 Premium Mobile Media System



## For Volkswagen Golf 6

Same as for the Golf 7, the Alpine Style systems for the Golf 6 enter the 2nd generation. Enjoy excellent vehicle integration paired with the latest connectivity features such as Apple CarPlay and Android Auto, as well as DAB+ digital radio.



Compatible	Golf 6 / GTI / GTD / R (A5) Limousine 2008-2012, Variant 2009 - 2013, Cabriolet 2011-2016
Not compatible	Cross Golf / Golf Plus

### X902D-G6 Premium Navigation System



### i902D-G6 Premium Mobile Media System



# ALPINE STYLE



## For Volkswagen Polo

Our all-new 8-inch installation kit for the Volkswagen Polo (combined with the new X802D-U) offers cutting edge navigation including turn-by-turn arrow guidance in the multi-function display, paired with DAB+, Android Auto and Apple CarPlay compatibility.

Compatible	Polo 5 / GTI (6C) model year 2014 - 2017
Not compatible	Vehicles with sound system Beats / edition model 'Sound'



X802D-U  
Premium Navigation System



KIT-X802POLO  
Polo Installation Kit for X802D-U



## For SEAT Leon

This all-new system offers a 7-inch touch screen, while using a specially designed 1DIN body to fit into the SEAT Leon. Enjoy DAB+ digital radio, Android Auto, Apple CarPlay, USB and HDMI video and Bluetooth® audio streaming in your Leon.

Compatible	Leon 3 / ST / SC / SC Cupra (5F) model year 2012 - 2016
Not compatible	Vehicles with SEAT sound system and road-sign recognition



iLX-702LEON  
Premium Multi-Media System



YouTube



# ALPINE STYLE



## For Skoda Octavia 3

The second generation of the Alpine Style systems for the Skoda Octavia are here. You can choose between a model with built-in iGO Primo Nextgen navigation or a model without built-in navigation.

Compatible	Octavia 3 / RS (5E) model year 2012 and newer
Not compatible	Vehicles with E-Call system



i902D-OC3  
Premium Mobile Media System

- 9" Works with Apple CarPlay androidauto
- Spotify dab+ Bluetooth HDMI



X902D-OC3  
Premium Navigation System

- 9" Works with Apple CarPlay androidauto Spotify
- 100% FREE MAPS dab+ Bluetooth HDMI



## For BMW 3 (E46)

Compatible	BMW E46 with original navigation system (Business). Vehicles with original tape deck or CD radio will require additional installation parts from BMW. Vehicles with BMW sound system may require an additional interface.
------------	---



iLX-702E46  
Premium Multi-Media System

- 7" Works with Apple CarPlay androidauto
- Spotify dab+ Bluetooth HDMI



KWE-E46EXT  
Required for BMW E46 with original radio/ navigation receiver in the trunk.



## For Smart Fortwo/ Forfour

This kit allows perfect installation of the INE-W710D or iLX-702D into the Smart Fortwo and Forfour (453). Bring premium navigation, Apple CarPlay, Android Auto, DAB+ digital radio and much more to your SMART.



KIT-W997SMTB + iLX-702D  
Smart System Set (Black)

- 7" Works with Apple CarPlay androidauto Spotify
- dab+ Bluetooth HDMI



KIT-W997SMTW + iLX-702D  
Smart System Set (White)

- 7" Works with Apple CarPlay androidauto Spotify
- dab+ Bluetooth HDMI



# ALPINE STYLE



## For Mercedes-Benz Sprinter

The gigantic 9-inch high-resolution touch screen of the X902D-S906 will amaze you with superb picture quality for navigation maps, menus and video content. Best of all: the installation allows the lower pocket in your dash to remain free. Alpine offers an optional DVD player or even a Qi-standard wireless charging console for your smartphone to be installed in this space.

Compatible	Mercedes-Benz Sprinter 906 model year 2013 and newer
------------	--



X902D-S906  
Premium Navigation System



## For Mercedes-Benz Vito (447)

Upgrade your Mercedes-Benz Vito (447) with this cutting-edge navigation and infotainment system. The X902D-V447 offers an amazing 9-inch high-resolution touch-screen with DAB+ digital radio, iGO navigation system with 48 countries with 3-years free of charge map updates.

Compatible	Mercedes-Benz Vito 447 model year 2014 and newer
------------	--

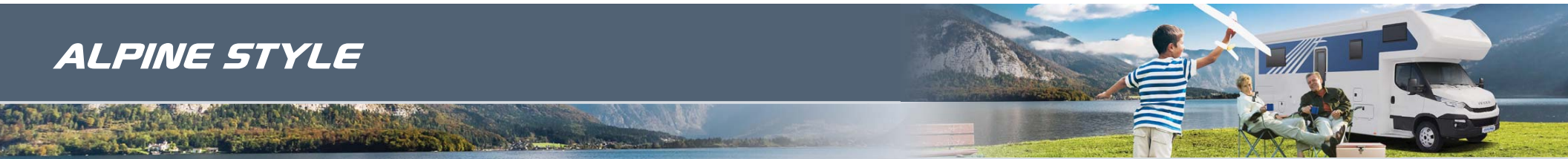


X902D-V447  
Premium Navigation System





# ALPINE STYLE



## For FIAT Ducato

The Alpine Style premium navigation system for the Ducato 3 now features Apple CarPlay connectivity, Android Auto, trucking software and includes navigation with TomTom map database with 3 years free of charge updates.



Compatible	Fiat Ducato III (250) 06/2006-2011 • Fiat Ducato III Facelift (250) 2011-2014 • Fiat Ducato III (290) 2014-2016 • Fiat Ducato III* (290) 2017 and newer • Citroën Jumper / Relay (250) 06/2006 and newer • Peugeot Boxer II (250) 2011 and newer • For campers with factory 2 DIN Radio, KIT-902DU-BT is required • For campers with factory Navigation, KIT-902DU-NV is required
------------	---

\*Some features like lane assist, parking sensors etc. are currently not supported.



i902D-DU Premium Mobile Media System



X902D-DU Premium Navigation System



## For Iveco Daily

The X902D-ID perfectly matches the Iveco Daily interior design. The high-resolution 9-inch display is easily reachable from both front seats. Navigation maps, menus and other content is highly visible even in direct sunlight. Includes navigation trucking software.

Compatible	Iveco Daily VI Euro 5 model year 2014 and newer • Iveco Daily VI Euro 6 model year 2014 and newer
------------	---



X902D-ID Premium Mobile Media System





# Freestyle by Alpine: Customise Your Dash

**FREESTYLE**  
by ALPINE

You have the idea - we have the system: Freestyle by Alpine includes all components for your custom install. We offer the Freestyle system in a 9-inch and 7-inch touch-screen configuration. Bring high-end navigation, Apple CarPlay, Android Auto and much, much more to your ride, for which there was simply no system available - until now.

## X902D-F 9-INCH FREESTYLE NAVI STATION

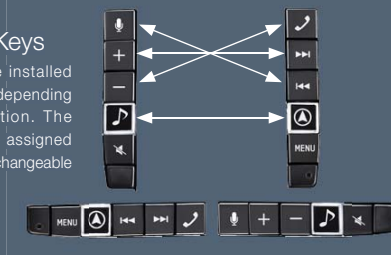


- 9" (23cm) WVGA Touch Screen
- Works with Apple CarPlay
- Works with Android Auto
- Dual Zone Playback (HDMI)
- FLAC Playback (24/96 and 24/192 Compatible)
- 4x 50W High Power Amp
- Built-in DAB+ Tuner
- Alpine Tunelt App Ready
- WMA/MP3/AAC Playback
- MP4 Playback (USB)
- BASS ENGINE SQ
- 3 PreOuts
- Dual 9-band Parametric EQ
- 6-Channel Digital Time Correction
- Crossover
- GPS and Glonass Compatible
- iGO Primo Nextgen Navigation
- TomTom Maps for 48 Countries
- 3 years free of charge map updates
- 3D Landmark Icons and City Maps
- GPS / Glonass Antenna Included
- HDMI Input / Output
- USB Video Playback
- Built-in Bluetooth® Module
- Bluetooth® Audio Streaming
- Direct Camera Input
- Vehicle Data-bus Interface Ready
- 1x Rear A/V Input
- Anti-theft Security Code
- 3 user interface designs selectable
- USB Cable Included
- DVB-T Tuner Ready
- Optional DVD Player Available

9"

### Interchangeable Keys

The 2 key panels can be installed horizontally or vertically, depending on the installation position. The key positions can also be assigned individually due to the interchangeable buttons.



### Adjustable Illumination

You can easily adjust the illumination colour of the control buttons to 6 different colours to match the Freestyle system to your dashboard illumination.



### Free map updates within first 3 years!

Within the first 3 years after the navigation system's first GPS fix, you can go to [www.alpine.naviextras.com](http://www.alpine.naviextras.com) to download new navigation map updates fully free-of-charge. After that you can purchase map updates country by country or as packages based on your needs.

**3 Years Free**

[www.alpine.naviextras.com](http://www.alpine.naviextras.com)

## X702D-F 7-INCH FREESTYLE NAVI STATION

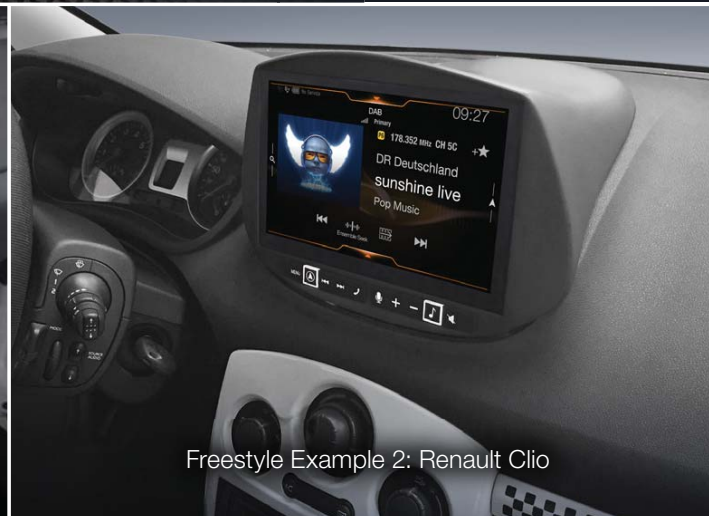
7-inch display version of the Freestyle system. All other features and specs are identical to the X902D-F.

7"

Freestyle Example 1: Fiat 500 Abarth



Freestyle Example 3: Peugeot 208



Freestyle Example 2: Renault Clio



Installation Parts Included



# Welcome to the Future of Car-Media



YouTube

The Alpine Halo9 brings a 9-inch high-resolution touch-screen to any vehicle with 1-DIN installation space. The super-slim display appears to simply hover over your dashboard. Bring the future of car-media to your ride with the Alpine Halo9.



## iLX-F903D DIGITAL MEDIA STATION

9"



- 9" (23cm) adjustable Touch Screen
- 1DIN chassis
- Works with Apple CarPlay
- Works with Android Auto
- FLAC Playback (24/96 and 24/192 Compatible)
- 4x50W HighPowerAmp
- Built-in DAB+ Tuner
- Alpine Tunelt App Ready
- WMA/MP3/AAC Playback
- MP4 Playback (USB)
- BASS ENGINE SO
- 3 PreOuts (4V)
- 9-band Parametric EQ
- 6-Channel Digital Time Correction
- Crossover
- GPS / Glonass antenna Included
- HDMI Input
- USB Video Playback
- Built-in Bluetooth® Module
- Bluetooth® Audio Streaming
- Camera Input (RCA)
- Steering Wheel Remote Control Ready
- Vehicle Data-bus Interface Ready
- 1x Rear AV Input
- Anti-theft Security Code

### Fully adjustable display

Adjust the display angle, height and distance to the dash to match your vehicle

### Apple CarPlay compatibility

Navigate, communicate, stream and enjoy music and much more with Apple CarPlay

### Android Auto compatibility

Use all your Android Auto enabled apps and let Google Assistant help you

### Voice Assistant

Use SIRI or OK Google to help you with address input, weather forecasts and more

### Ambient illumination

The thin, white LED ambient light increases the Alpine Halo9's appearance to hover over your dash

### DAB+ Digital Radio

The built-in DAB+ tuner allows you to enjoy noise-free digital radio

### Use the latest apps

Compatible with Amazon Music, Google Play Music, Spotify, WhatsApp and many more apps



Adjust Display Angle



Adjust Display Height and Distance to the Dash



Edge-to-Edge Glass Design



# 8-inch Premium Navigation Systems



## X802D-U ADVANCED NAVI STATION

8"



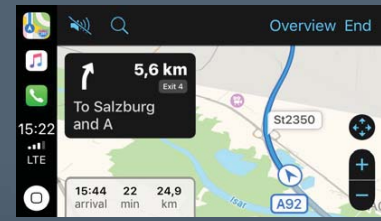
- 8" (20,3 cm) WVGA Touch Screen
- Works with Apple CarPlay
- Works with Android Auto
- Dual Zone Playback (HDMI)
- FLAC Playback (24/96 and 24/192 Compatible)
- 4 x 50W High Power Amp
- Built-in DAB+ Tuner
- Alpine Tunelt App Ready
- WMA/MP3/AAC Playback
- MP4 Playback (USB)
- BASS ENGINE SQ
- 3 PreOuts
- Dual 9-band Parametric EQ
- 6-Channel Digital Time Correction
- Crossover
- GPS and Glonass Compatible
- iGO Primo Nextgen Navigation
- TomTom Maps for 48 Countries
- 3 years free of charge map updates
- GPS / Glonass Antenna Included
- HDMI Input / Output
- USB Video Playback
- Built-in Bluetooth® Module
- Bluetooth® Audio Streaming
- Direct Camera Input
- Steering Wheel Remote Control Ready
- Vehicle Data-bus Interface Ready
- 1x Rear A/V Input
- Anti-theft Security Code
- Optional DVD Player Available

### Built-in Navigation and Online Navigation

The X802D-U and INE-W710D feature a built-in iGO Primo Nextgen navigation system with pre-installed TomTom maps. Thanks to Apple CarPlay and Android Auto, you have the alternative of online navigation. Sporadic navigation users can simply use the online navigation of the iLX-702D for a more cost-efficient solution.



iGO Primo Nextgen with TomTom Maps



Apple CarPlay Maps

### 3 years free-of-charge map updates

Within the first 3 years of using your iGO Primo Nextgen navigation, you can visit [www.alpine.naviextras.com](http://www.alpine.naviextras.com) to download TomTom map updates free of charge.



### DVE-5300 EXTERNAL DVD PLAYER

- DVD VIDEO
- 24-bit D/A CONVERTER
- HDMI
- Optical
- Included
- DVD±RW±RV
- CD-R/-RW/WMA/MP3/AAC Playback
- 1DIN chassis
- Remote Control Included



## X800D-U ADVANCED NAVI STATION

8"



- 8" (20,3 cm) WVGA Touch Screen
- iPod Video Playback (requires KOU-461M)
- DVD±RW±RV/DivX Playback
- USB Video Playback
- Dual Zone Playback
- 4 x 50W High Power Amp
- CD-R/-RW/WMA/MP3/AAC Playback
- Built-in DAB/DAB+/DMB Tuner
- Alpine Tunelt App Ready
- BASS ENGINE SQ
- 3 PreOuts (4 Volts)
- 9-band Parametric EQ
- 10 Sound Pre-Sets
- 6-Channel Digital Time Correction
- Crossover
- MediaXpander
- 24-bit DAC
- iGO Primo Nextgen navigation
- 48 European Countries Covered
- Built-in TMC Tuner
- Voice Guidance in 29 Languages
- Text to Speech
- 3D Landmark Icons and City Maps
- GPS Antenna Included
- HDMI Input
- Digital Optical Output
- Made for iPhone and iPod
- USB Connection
- Built-in Bluetooth® Module
- Direct Camera Input
- DVB-T Tuner Ready
- Steering Wheel Remote Control Ready
- Vehicle Display Interface Ready
- 2x Rear A/V Input, 1x Output
- Microphone Included
- Anti-theft Security Code
- USB Cable Included

### Built-in DVD Player

Enjoy movies while your car is parked or playback CDs. The built-in optical drive is compatible with all commonly used disc and audio compression formats.



### Built-in DAB Tuner

The built-in DAB, DAB+ and DMB tuners deliver high digital sound quality. If DAB is not available, the tuner automatically switches to RDS. DAB antenna sold separately.





# 7-inch Navigation and Media Systems



## INE-W710D

7"

### ADVANCED NAVI STATION

Product features and specs are identical to X802D-U, but includes a 7-inch (17,8 cm) display.



## iILX-702D

7"

### DIGITAL MEDIA RECEIVER

Product features and specs are identical to X802D-U, but includes a 7-inch (17,8 cm) display and excludes the iGO Primo navigation with TomTom Maps.

Feature Comparison	X802D-U	INE-W710D	iILX-702D	X800D-U	INE-W987D
Built-in Navigation	●	●	-	●	●
Works with Apple CarPlay	●	●	●	-	-
Works with Android Auto	●	●	●	-	-
Online Navigation	●	●	●	-	-
Screen Size	8-inch	7-inch	7-inch	8-inch	7-inch

Use the latest smartphone apps with Apple CarPlay and Android Auto.



**Spotify**  
Stream and browse millions of songs in your car.



**Google Play Music**  
Enjoy and control all your Google Play Music content.



**Amazon Music**  
Got an Amazon Music account? Enjoy your content in the car.



**Waze**  
Navigate online with Waze (Android Auto only).



**WhatsApp**  
Send and receive messages with your voice assistant while you drive.



**Google Maps**  
Use Google Maps for online navigation and traffic info (Android Auto only).

### Voice Assistant

Use Apple Siri or Google Assistant to ask for directions, weather forecasts, compose messages, add calendar entries and much, much more. Simply active voice assistant with the VOICE button.



## INE-W987D

### ADVANCED NAVI STATION

7"

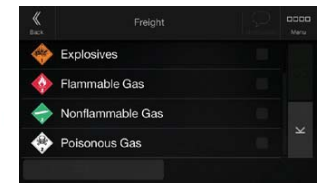
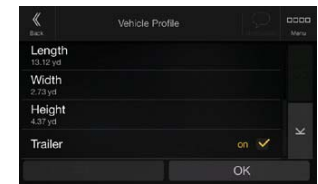
Product features and specs are identical to X800D-U, but includes a 7-inch (17,8 cm) display.

## Truck and Camper Versions

Caravans and trucks require special map databases to input the vehicle's measurements, weight, cargo type and if a trailer is used or not. These conditions are then calculated in to avoid route results that are inappropriate for this vehicle.



INE-W710DC	7" Navi Station with Trucking Database
X802DC-U	8" Navi Station with Trucking Database
X902DC-F	9" Freestyle Navi with Trucking Database



# 6.1-inch Navigation and Media Systems



## INE-W990HDMI

ADVANCED NAVI STATION

6.1"



- 6.1" (15.5 cm) WGA Touch Screen
- iPod Video Playback (requires KCU-461V)
- DVD±R/±RW/DivX Playback
- USB Video Playback
- HDMI Input
- 4 x 50W High Power Amp
- WMA/MP3/AAC Playback
- Alpine Tunelt App Ready
- 3 PreOuts (4 Volts)
- 9-band Parametric EQ
- 10 Sound Pre-Sets
- 6-Channel Digital Time Correction
- Crossover
- MediaXpander
- 24-bit DAC
- IGO Primo 2 Navigation System
- 46 European Countries Covered
- Built-in TMC Tuner
- GPS Antenna Included
- Made for iPhone and iPod
- USB Connection
- Built-in Bluetooth® Module
- AUX Camera Input
- Steering Wheel Remote Control Ready
- Vehicle Display Interface Ready
- 1x Rear A/V Input, 1x Video Output
- Microphone Included
- Anti-theft Security Code
- USB Cable Included

### HDMI Input

Connect your smartphone or HDMI enabled media player to enjoy high-res movies on your 6.1-inch display (HDMI cable adapters may be required).

HDMI™



**Free map update within 30 days after first usage**

Check out <https://alpine.naviextras.com> to see if there is a map update available. The map update can be downloaded free of charge within a 30-day period after the device's first GPS fix. This ensures that you have the latest map on board after purchase of your device.

here



## IVE-W560BT

2-DIN MOBILE MEDIA STATION

6.2"



- 6.2" (15.7cm) WVGA Touch Screen
- DVD±R/±RW/ Playback
- iPod Video Playback
- USB Video Playback
- JPEG Photo Viewer
- 4 x 50W High Power Amp
- CD-R/-RW/WMA/MP3 Playback
- 2 PreOuts (2 Volts)
- 3-band Graphic EQ
- 10 Sound Pre-Sets
- Crossover Settings
- 24-bit DAC
- Made for iPhone and iPod
- USB Front Connection
- Built-in Bluetooth® Module
- AVRCP Ver. 1.4 Compatible
- Camera Input (RCA)
- 1x A/V Input (front, 3.5mm), 1x A/V Output
- Steering Wheel Remote Control Ready (Analogue only)
- Remote Control Ready
- Menu Language Selection (3 languages)
- Anti-theft Security Code
- Blue Illumination
- Rotary Volume Knob



## PKG-RSE3HDMI

10.2"

10.2" WSVGA OVERHEAD MONITOR WITH DVD PLAYER



- 10.2" WSVGA High-Definition Flip-Down
- 2 HDMI Inputs, 1 USB Port, 1 A/V Input
- DVD-R/-RW Compatible
- AVI, MPEG, MP4, RMVB, MP3, WMA, AAC, Xvid and JPEG Playback
- 1 A/V Output
- Includes 2 Wireless Headphones and Wireless Remote Control
- Includes Console Shroud Covers in three Colours (Black, Grey, Gold)



### SHS-N207

DUAL SOURCE WIRELESS HEADPHONES  
Dual source fold-flat wireless headphones.

### SHS-N107

SINGLE SOURCE WIRELESS HEADPHONES  
Single channel wireless headphones for use with PKG-RSE3HDMI



## DVB-T2

TUE-T220DV DVB-T2 RECEIVER

- DVB-T2 support including HEVC (H.265)
- Analogue A/V, HDMI and RCA S/PDIF Output
- Dolby Digital 2 Channel Down-mix
- Multi language Interface
- Touch Control Ready
- EPG / Tele Text
- Auto Search
- 2ch Antenna Diversity System
- Active Screen Antenna Included
- Remote Control Included



## KAE-205DV

ACTIVE DVB-T SCREEN ANTENNA SET  
• Full VHF and UHF Reception (40-800MHz)  
• Amplification +16dB  
• 5m Cable with F-Type Plugs





# High Dynamic Range Cameras for Greater Safety

Alpine's all new HDR cameras are simply amazing and offer many new technologies that make manoeuvring your vehicle easier and safer.

- High-resolution camera for great picture quality and high details
- Amazing night-view capabilities in low-light environments
- Fast exposure adjustment when moving from dark to bright environments (for example underground parking, tunnels, etc)
- New, small connectors for easy installation of camera and cables

Switch between front, rear and side view cameras

Switch between viewing modes (for multi-view cameras)



Optional centre line helps to align with your trailer hitch-ball

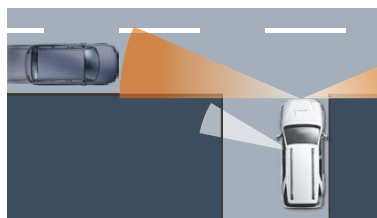
Coloured distance guides: can be adjusted to exact width of your vehicle to help you backing-up



**HCE-C2600FD**  
MULTI-VIEW FRONT CAMERA

- 4 viewing modes • High-res camera
- Ultra-wide angle camera

See around corners  
Intelligent front cameras contribute greatly to driving safety: when set to Corner Mode, you are able to see around corners when driving out of narrow alleys or similar into busy streets.



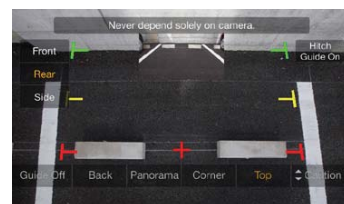
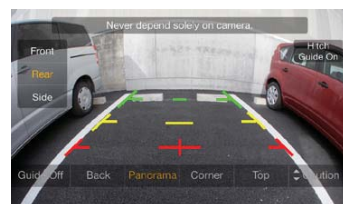
**KCX-C250MC**  
MULTI CAMERA INTERFACE

- Connects up to 3 cameras
- Works with Alpine Direct Cameras
- Touch control of all camera views from the touch screen
- Includes Interface Box and Cable Harness



**HCE-C2100RD**  
MULTI-VIEW REAR CAMERA

- 4 viewing modes • High-res camera
- Ultra-wide angle camera



**KCX-C2600B**  
MULTI CAMERA SWITCH BOX

- Allows connection and control of 2 cameras
- Includes wired remote switch for camera modes



**HCE-CS1100**  
SIDE VIEW CAMERA

- For side installation of your vehicle
- High-res camera • Ultra-wide angle camera



**HCE-C1100**  
REAR VIEW CAMERA (RCA)

- Distance guides • High-res camera
- Ultra-wide angle camera



**HCE-C1100D**  
REAR VIEW CAMERA (DIRECT)

- Distance guides • High-res camera
- Ultra-wide angle camera



**KWE-EX5CAM**  
5 METER CAMERA EXTENSION CABLE  
To extend the camera cable of an Alpine camera with direct connector

# Experience the Alpine Head Unit Advantage



## Tune Your Sound with Your Smartphone

Download the Alpine Tunelt App from the Apple App Store or Google Play to get full control over your head unit's sound features. You can adjust the Parametric EQ, digital time correction, crossover settings, subwoofer settings and much more by using Tunelt's graphical user interface. If you have no experience with sound tuning and system setup, Tunelt has the solution for you: simply download a good setup for your car from the cloud and apply it instantly with the push of a button.



## Spotify Streaming

Spotify is a great way to discover new music and enjoy all your favourite songs and playlists. Why not use it on the road? Start your playlist, genre list or album on your phone before you start driving and stream it wireless via Bluetooth to your Alpine head unit.



## Enjoy Internet Radio

There are many internet radio apps available for your smartphone. Simply start your internet radio app on the phone and connect it via Bluetooth, the AUX input connector on your head unit (requires optional AUX cable) or via USB (for radios with App Direct feature).



## Connect your iPhone or iPod

You can connect your iPhone or iPod via USB cable to enjoy the audio content in your car. Simply select songs, albums or playlists on your iPhone/iPod or directly through your Alpine head unit while you drive. Compatible with all iPhone and iPod models of the last years, including the new iPhone X and iPhone 8 models.



## Go Digital with DAB+ Digital Radio

Many Alpine head units feature a built-in DAB+ receiver, allowing you to enjoy noise-free digital radio in your car. The advantages are radio reception in CD quality, advanced station and genre search options, a country-wide station list and much more. Also consider that several countries started to replace analog AM/FM radio with DAB+, so digital is clearly the way to go.



## Connect your Android Phone

If you have an Android based phone or tablet, you can connect it via USB to your Alpine head unit to enjoy the audio content through your car speakers. You can select songs on your phone/ tablet or using the rotary encoder of your head unit. This feature is available for all Alpine head units with Android Open Accessory 2.0.



# Superior Sound Features for an Audiophile Experience



## CDE-178BT

CD RECEIVER WITH BLUETOOTH®

- 4 x 50W High-Quality Amplifier
- CD-R/-RW/MP3/WMA/AAC Playback
- 3 PreOuts (4 Volts)
- BassEngine Pro
- 10 Sound Pre-Sets
- 9-band Parametric EQ
- 6-channel Digital Time Correction
- Digital Crossover
- MediaXpander
- 24-bit DAC
- Alpine Tunelt App Ready
- Built-in Bluetooth® Module
- Bluetooth® Audio Streaming
- Made for iPhone and iPod
- App Direct Mode
- Rear USB Port with 1000mA
- Rear AUX Input (3.5mm)
- Vehicle Display Interface Ready
- Steering Wheel Remote Control Ready
- Remote Control Ready
- 4 Colour Illumination
- Non-shutdown design for start-stop engine
- Detachable faceplate with carry case
- Microphone Included

Feature Comparison	CDE-178BT	CDE-196DAB	CDE-193BT	CDE-W296BT
USB & AUX Port	Rear	•	•	•
Alpine Tunelt App Ready	•	•	•	•
Remote Control Ready	•	•	•	•
Steering Wheel Remote Control Ready	•	•	•	•
3-Way X-Over	•	•	•	•
9-Band Parametric EQ	•	•	•	•
Digital Time Correction	•	•	•	•
MP3 / AAC / WMA Playback	•	•	•	•
iPod / iPhone Compatible	•	•	•	•
Bluetooth® / 24-Bit DAC	•	•	•	•
MediaXpander	•	•	•	•
Vehicle Display Interface Ready	•	•	•	-
DAB / DAB+ Tuner	-	•	-	-
CD Drive	•	•	•	•
Button Illumination Colour	Blue / Red / Green / Amber	RGB	RGB	RGB
Display Illumination Colour	White	RGB	RGB	RGB
Built-in Amplifier	4 x 50W	4 x 50W	4 x 50W	4 x 50W
RCA Outputs	3 PreOuts (4V)	3 PreOuts (2V)	3 PreOuts (2V)	3 PreOuts (2V)



## CDE-196DAB

CD RECEIVER WITH DAB AND BLUETOOTH®

- 4 x 50W High-Quality Amplifier
- Built-in DAB/DAB+/DMB Tuner
- CD-R/-RW/MP3/WMA/AAC Playback
- FLAC Playback
- 3 PreOuts (2 Volts)
- BASS ENGINE SQ
- 10 Sound Pre-Sets
- 9-band Parametric EQ
- 6-channel Digital Time Correction
- MediaXpander
- 3-way Crossover
- 24-bit DAC
- Alpine Tunelt App Ready
- Built-in Bluetooth® Module
- Bluetooth® Audio Streaming
- Made for iPhone and iPod
- App Direct Mode
- Front USB Port with 1000mA
- Front AUX Input (3.5mm)
- Vehicle Display Interface Ready
- Steering Wheel Control Ready
- RGB Illumination (150,000 colours)
- Non-shutdown design for start-stop engine



## CDE-193BT

CD RECEIVER WITH BLUETOOTH®

- 4 x 50W High-Quality Amplifier
- CD-R/-RW/MP3/WMA/AAC Playback
- FLAC Playback
- 3 PreOuts (2 Volts)
- BASS ENGINE SQ
- 10 Sound Pre-Sets
- 9-band Parametric EQ
- MediaXpander
- 3-way Crossover
- 24-bit DAC
- Alpine Tunelt App Ready
- Built-in Bluetooth® Module
- Bluetooth® Audio Streaming
- Made for iPhone and iPod
- App Direct Mode
- Front USB Port with 1000mA
- Front AUX Input (3.5mm)
- Vehicle Display Interface Ready
- Steering Wheel Control Ready
- RGB Illumination (150,000 colours)
- Non-shutdown design for start-stop engine



## CDE-W296BT

2-DIN CD RECEIVER WITH BLUETOOTH®

- 4 x 50W High-Quality Amplifier
- CD-R/-RW/MP3/WMA/AAC Playback
- 3 PreOuts (2 Volts)
- BASS ENGINE SQ
- 10 Sound Pre-Sets
- 9-band Parametric EQ
- 6-channel Digital Time Correction
- MediaXpander
- 3-way Crossover
- 24-bit DAC
- Alpine Tunelt App Ready
- Built-in Bluetooth® Module
- Bluetooth® Audio Streaming
- Made for iPhone and iPod
- App Direct Mode
- Front USB Port with 1000mA
- Front AUX Input (3.5mm)
- Steering Wheel Remote Control Ready
- Remote Control Ready
- RGB Illumination (150,000 colours)
- Non-shutdown design for start-stop engine
- 2-line LCD Display

# Enjoy DAB+ Digital Radio in Your Vehicle



## CDE-205DAB

CD RECEIVER WITH DAB+ AND BLUETOOTH®

- 4 x 50W High-Quality Amplifier
- Built-in DAB+ Tuner
- Made for iPhone and iPod
- CD-R/RW Playback
- FLAC/MP3/WMA/AAC Playback
- 3 PreOuts (2 Volts)
- Bass Engine SQ
- 10 Sound Pre-Sets
- 3-band Parametric EQ
- Low-Pass & High-Pass Filter
- Bluetooth® Hands-Free Operation
- Bluetooth® Audio Streaming
- Android Open Accessory 2.0
- Front USB Port with 1000mA
- Front AUX Input (3.5mm)
- Steering Wheel Remote Control Ready
- Remote Control Ready
- RGB Illumination (150,000 colours)
- Clock
- Detachable Faceplate



Feature Comparison	CDE-205DAB	UTE-93DAB	UTE-204DAB	UTE-202DAB
Front USB & AUX	1000mA	1000mA	1000mA	1000mA
DAB / DAB+ Tuner	•	•	•	•
Remote Control Ready	•	•	•	•
Steering Wheel Remote Control Ready	•	•	•	•
HPF / LPF		3-Way X-Over		
Parametric EQ	3-Band	9-Band	3-Band	3-Band
Android Open Accessory 2.0	•	App Direct	•	•
MP3 / AAC / FLAC Playback	•	•	•	•
iPod / iPhone Compatible	•	•	•	•
Bluetooth®	•	•	•	-
MediaXpander	-	•	-	-
Vehicle Display Interface Ready	-	•	-	-
CD Drive	•	-	-	-
Button Illumination Colour	RGB	RGB	RGB	RGB
Display Illumination Colour	RGB	RGB	RGB	RGB
Built-in Amplifier	4 x 50W	4 x 50W	4 x 50W	4 x 50W
RCA Outputs	3 PreOuts (2V)	3 PreOuts (2V)	3 PreOuts (2V)	2 PreOuts (2V)



## UTE-93DAB

DIGITAL MEDIA RECEIVER WITH DAB AND BLUETOOTH®



- 4 x 50W High-Quality Amplifier
- Built-in DAB/DAB+/DMB Tuner
- MP3/WMA/AAC Playback
- FLAC Playback
- 3 PreOuts (2 Volts)
- BASS ENGINE SQ
- 10 Sound Pre-Sets
- 9-band Parametric EQ
- 6-channel Digital Time Correction
- MediaXpander
- 3-way Crossover
- 24-bit DAC
- Alpine Tunelt App Ready
- Built-in Bluetooth® Module
- Bluetooth® Audio Streaming
- Front USB Port with 1000mA
- Made for iPhone and iPod
- App Direct Mode
- Front AUX Input (3.5mm)
- Vehicle Display Interface Ready
- Steering Wheel Remote Control Ready
- Remote Control Ready
- RGB Illumination (150,000 colours)
- Non-shutdown design for start-stop engine
- Detachable faceplate with carry case



## UTE-204DAB

DIGITAL MEDIA RECEIVER WITH DAB+ AND BLUETOOTH®



- 4 x 50W High-Quality Amplifier
- Built-in DAB+ Tuner
- Made for iPhone and iPod
- FLAC/MP3/WMA/AAC Playback
- 3 PreOuts (2 Volts)
- Bass Engine SQ
- 10 Sound Pre-Sets
- 3-band Parametric EQ
- Low-Pass & High-Pass Filter
- Bluetooth® Hands-Free Operation
- Bluetooth® Audio Streaming
- Android Open Accessory 2.0
- Front USB Port with 1000mA
- Front AUX Input (3.5mm)
- Steering Wheel Remote Control Ready
- Remote Control Ready
- RGB Illumination (150,000 colours)
- Clock
- Detachable Faceplate



## UTE-202DAB

DIGITAL MEDIA RECEIVER WITH DAB+



- 4 x 50W High-Quality Amplifier
- Built-in DAB+ Tuner
- Made for iPhone and iPod
- FLAC/MP3/WMA/AAC Playback
- 2 PreOuts (2 Volts)
- Bass Engine SQ
- 10 Sound Pre-Sets
- 3-band Parametric EQ
- Low-Pass & High-Pass Filter
- Android Open Accessory 2.0
- Front USB Port with 1000mA
- Front AUX Input (3.5mm)
- Steering Wheel Remote Control Ready
- Remote Control Ready
- RGB Illumination (150,000 colours)
- Clock
- Detachable Faceplate



# The Best Head Units on a Budget: the Alpine Entry Line



Made for iPod iPhone

flac

Bluetooth

## CDE-203BT

CD RECEIVER WITH BLUETOOTH®

- 4 x 50W High-Quality Amplifier
- Made for iPhone and iPod
- CD-R/-RW Playback
- FLAC/MP3/WMA/AAC Playback
- 2 PreOuts (2 Volts)
- Bass Engine SQ
- 10 Sound Pre-Sets
- 3-band Parametric EQ
- Low-Pass & High-Pass Filter



Variable RGB Illumination

BASS ENGINE SQ

USB AAC MP3

PRESETS

PARAMETRIC EQ

Front

- Bluetooth® Hands-Free Operation
- Bluetooth® Audio Streaming
- Android Open Accessory 2.0
- Front USB Port with 1000mA
- Front AUX Input (3.5mm)
- Steering Wheel Remote Control Ready
- Remote Control Ready
- RGB Illumination (150,000 colours)
- Clock
- Detachable Faceplate

Feature Comparison	CDE-203BT	UTE-92BT	CDE-201R	UTE-200BT
Front USB & AUX	1000mA	1000mA	1000mA	500mA
Remote Control Ready	•	•	•	•
Steering Wheel Remote Control Ready	•	•	•	•
MP3 / WMA / FLAC Playback	•	•	•	•
HPF / LPF		3-Way X-Over		
Parametric EQ	3-Band	9-Band	3-Band	3-Band
Android Open Accessory 2.0	•	App Direct	•	•
Bluetooth®	•	•	-	•
AAC Playback	•	•	•	•
iPod / iPhone Compatible	•	•	•	•
CD Drive	•	-	•	-
MediaXpander	-	•	•	-
Vehicle Display Interface Ready	-	•	-	-
Button Illumination Colour	RGB	RGB	Red / Green	RGB
Display Illumination Colour	RGB	RGB	White	RGB
Built-in Amplifier	4 x 50W	4 x 50W	4 x 50W	4 x 50W
RCA Outputs	2 PreOuts (2V)	3 PreOuts (2V)	2 PreOuts (2V)	2 PreOuts (2V)



## UTE-92BT

DIGITAL MEDIA RECEIVER WITH BLUETOOTH®



- 4 x 50W High-Power Amplifier
- MP3/WMA/AAC Playback
- FLAC Playback
- 3 PreOuts (2 Volts)
- Bass Engine SQ
- 10 Sound Pre-Sets
- 9-band Parametric EQ
- 6-channel Digital Time Correction
- MediaXpander
- 24-bit DAC
- 3-Way Crossover
- Alpine TuneIt App Ready
- Built-in Bluetooth Module
- Made for iPhone and iPod
- Front USB Port with 1000mA
- Front AUX Input (3.5mm)
- Vehicle Display Interface Ready
- Steering Wheel Remote Control Ready
- Remote Control Ready
- RGB Illumination (150,000 colours)
- Non-shutdown design for start-stop engine



## CDE-201R

CD RECEIVER / USB CONTROLLER



- 4 x 50W High-Quality Amplifier
- Made for iPhone and iPod
- CD-R/-RW Playback
- FLAC/MP3/WMA/AAC Playback
- 2 PreOuts (2 Volts)
- Bass Engine SQ
- 10 Sound Pre-Sets
- 3-band Parametric EQ
- Low-Pass & High-Pass Filter
- Android Open Accessory 2.0
- Front USB Port with 1000mA
- Front AUX Input (3.5mm)
- Steering Wheel Remote Control Ready
- Remote Control Ready
- Dual Illumination (red / green)
- Clock
- Detachable Faceplate



## UTE-200BT

DIGITAL MEDIA RECEIVER WITH BLUETOOTH®



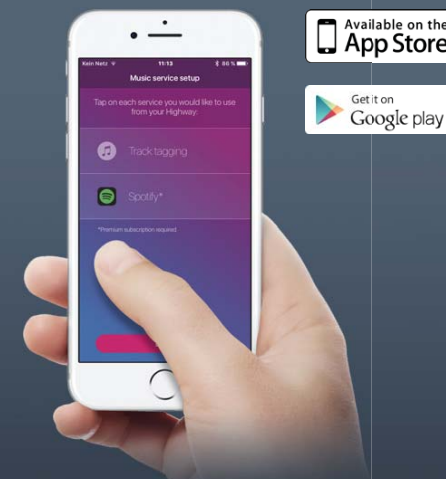
- 4 x 50W High-Quality Amplifier
- FLAC/MP3/WMA Playback
- 2 PreOuts (2 Volts)
- Bass Engine SQ
- 10 Sound Pre-Sets
- 3-band Parametric EQ
- Low-Pass & High-Pass Filter
- Android Open Accessory 2.0
- Front USB Port with 500mA
- Front AUX Input (3.5mm)
- Steering Wheel Remote Control Ready
- Remote Control Ready
- RGB Illumination (150,000 colours)
- Clock
- Detachable Faceplate

# Easy DAB Digital Radio for Any Car



## Key Features:

- DAB, DAB+ & FM Radio**  
Listen to your favorite DAB, DAB+ via FM transmitter or AUX input
- 20 Station Presets**  
Quickly select up to 20 DAB stations of your choice
- Bluetooth® Audio Streaming**  
Play any music wirelessly from your smartphone
- Hands-free Calling (EZI-DAB-BT only)**  
Wireless hands-free calling over Bluetooth® (includes microphone)
- Go Button**  
Discover, tag and play music on the move using the Go companion app
- Personal Assistant**  
Access your smartphone's online features through Siri or OK Google voice control
- Spotify Control**  
Control Spotify from the device, choose playlists, artists, songs and more
- Easy to install**  
Simple, self-fit wireless display and controller



Available on the **App Store**

Get it on **Google play**

## EZi-DAB Companion App

Download the free-of-charge companion app from the Apple App Store or Google Play to connect your phone wirelessly to your EZI-DAB. This enables Bluetooth® audio and Spotify\* streaming and control. Use your EZI-DAB to send voice commands to your phone via SIRI or OK Google and simply tag songs you hear and like on DAB radio to create a playlist of your favourite songs in your phone to purchase them later on.

## EZi-DAB-BT

ADD-ON DAB+ RECEIVER WITH BLUETOOTH® HANDS-FREE



## EZi-DAB-GO

ADD-ON DAB+ RECEIVER



## EZi-DAB-ONE

ADD-ON DAB+ RECEIVER



- Built-in DAB/DAB+ receiver
- Easy, do-it-yourself installation
- Service following
- AUX input for mobile devices
- AUX output for radio connection
- FM transmitter
- 20 presets
- Dual-colored display
- Wired control unit
- Backlit buttons



## TUE-DAB1U

MOBILE DAB/DAB+ RECEIVER

- Mobile DAB/DAB+ receiver with direct touch control
- 6 user interface languages selectable (English, German, French, Italian, Danish, Norwegian)
- Automatic channel search
- Alphabetic channel sorting
- Slide Show display (if supported by station)
- 24V Compatible
- Touch Control Ready
- DAB antenna sold separately



## KAE-232DA

DAB ANTENNA

- Structure: Bar Type, self-adhesive
- Frequency Ranges: band-III/L: 170-240MHz / 1452-1495MHz
- Supply: 5-12V (25mA), receiver (phantom) supplied
- Impedance: 50Ω
- Connection: 5m low-loss cable with angled SMB(f) plug
- Dimensions: 13 x 183mm



## KAE-242DA

DAB ANTENNA

- Structure: Foil Type, self-adhesive
- Frequency Ranges: band-III/L: 170-240MHz / 1452-1495MHz
- Supply: 5 - 12V (30mA), receiver (phantom) supplied
- Impedance: 50Ω
- Connection: 3.5m low-loss cable with angled SMB(f) plug
- Dimensions: 40 x 170mm



# Professional Sound Tuning for Any Vehicle



## PDP-E800DSP

8-CHANNEL DIGITAL DSP AMPLIFIER

- 8 x 100W RMS @ 4Ω (<1% THD)
- 8 x 120W RMS @ 2Ω (<1% THD+N)
- 6 x analog inputs (pre-amp or speaker level)
- 8-channel digital time correction and crossover
- 240-band parametric EQ (1/3 Octave)
- 1 x optical input (12 to 96kHz / 16 or 24bit)
- Wireless smartphone connectivity
- Remote-in & Auto Sensing
- 1 PreOut (CH8 signal), 2V RMS
- 1 remote out (12V, 100mA)
- 20kHz to 22kHz frequency response range
- Burr-Brown ADC (SNR >105dB, 24bit @96kHz)
- Start-stop engine non-shutdown design
- 2 x USB client / 1 x USB host
- Remote control port for optional bass knob
- RUX-KNOB2 ready (adapter included)



### Key Features:

#### Professional sound tuning for any vehicle

Full flexibility with 6 input channels for high- and low power signals, as well as 8 output channels for extensive system building.

#### Audiophile tuning features

Get 30 bands of Parametric EQ per channel, as well as 8 channel digital time correction and crossover for expert sound tuning.

#### Wireless System Control

Control key functions via smartphone app and wireless connection for real-time adjustment.

#### Compact size

The small footprint and size of the DSP amp makes it easy to install anywhere in the vehicle. Measurements: 205mm x 150mm x 50mm.

#### Pure Class-D technology

Once an analog input signal is converted to digital, it remains fully digital throughout the entire processor and amplification stage.

#### Start-Stop engine unaffected

The DSP amp will remain in full operation if your car is running on start-stop mode.

### Setup and sound tuning by PC

Download the Alpine configuration software and connect your PC via USB to the DSP amp. You can control the full channel setup for inputs and outputs in the graphical user interface and adjust all sound settings from Parametric EQ, digital time correction to crossover settings. Compatible with Windows XP, 7, 8 and 10.



### Get the Alpine Remote App

Download the Alpine Remote App to your Apple or Android smartphone and connect it to the DSP amplifier via WiFi connection. This app allows you to adjust volume, subwoofer level, source selection and load presets in real-time. The Alpine remote app is available free of charge in the Apple App Store and Google Play store.



## PXA-H800

SYSTEM INTEGRATION AUDIO PROCESSOR



- 31-band Graphic EQ per Channel (front L/R, rear L/R, centre, subwoofer: 10-band), Gain -12dB to +12dB
- Parametric EQ (front L/R, rear L/R, centre: 10-band, subwoofer: 5-band), Q 0.5/1/1.5/2/2.5/3/4/5, Gain -12dB to +12dB
- 8 Channel Auto/Manual Digital Time Correction (0 to 20ms, 0.05ms steps)
- MediaXpander Plus
- Crossover: Digital HPF/LPF (Slope 0/-6/-12/-18/-24/-30/-36, Gain -24dB to 0dB)
- RoadEQ
- ImprintEQ
- Dolby Digital
- Dolby PRO LOGIC® II
- DTS®
- 32-Bit Floating-point SHARC DSP
- 4 x Wolfson 24-Bit D/A Converters
- Euphony™ Sound Enhancement
- Basic Functions Touch Control Ready with IVA-D511R/RB, IVA-D800R, IVA-W910R
- 6 Channel RCA Input
- 2 x AI-NET Inputs
- 2 x Optical Inputs
- 6 Channel Speaker Level Input
- 8 Channel Configurable RCA Output (4 Volts)
- Gold-plated RCA Connectors
- USB Port for computer setup via included Sound Manager software (requires Windows® XP/Vista®/7)
- RUX-C800 required for full operation
- Included Microphone and USB Cable
- Includes 5.5m AI-NET Cable



### Customise Your Sound with a Wide Range of Functions

The PXA-H800, Alpine's extremely versatile audio processor, gives you the capabilities to achieve exactly the sound you want, no matter what kind of car you have. You have access to a huge range of sound processing functions that you can use to best match the acoustics of your vehicle, and to customize the sound based on the type of music, your basic preferences and even your mood each day. You get Digital Time Correction for optimum sound staging, extensive Digital Crossover adjustment, Graphic and Parametric Equalizers, MediaXpander+, and much, much more. You can even connect to a PC to make and save detailed sound settings.



## RUX-C800

CONTROLLER FOR PXA-H800

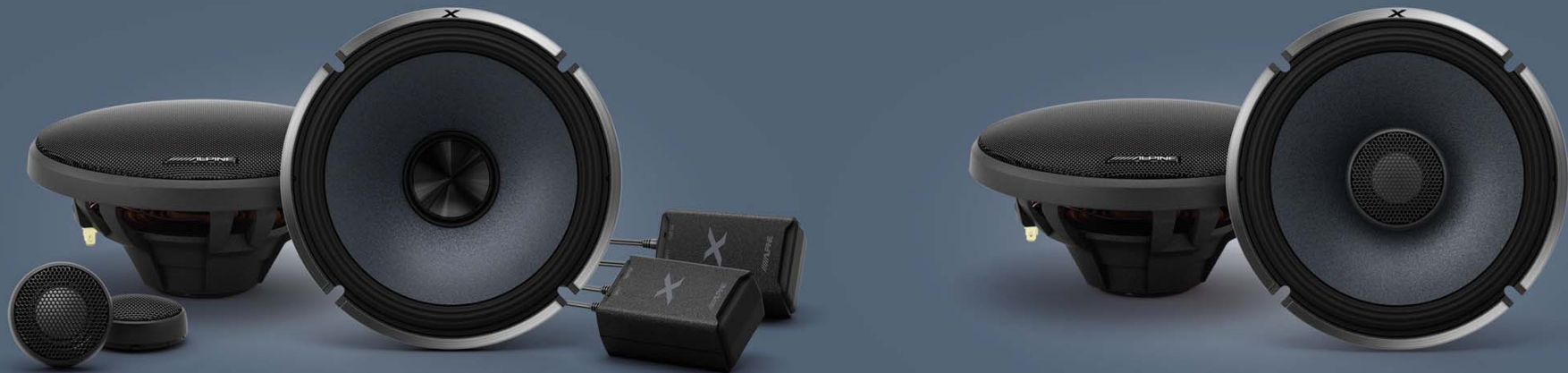
- Includes Installation Kit • BioLite Display • Dual Illumination (blue/red)





**SERIES**

# X-Series: An Audiophile Sound Experience



Designed to deliver highest dynamic and sound quality, Alpine's new flagship speakers reach their full potential when paired with the all-new X-Series digital amplifiers.

### All New Motor Structure

By using a powerful Neodymium magnet in a radial configuration, we could achieve a very compact motor assembly for a high vehicle compatibility rate. The radial magnet configuration drastically increases magnetic efficiency – resulting in high dynamic and power handling.



### HAMR Surround

The High Amplitude Multi-Roll (HAMR) surround allows a maximum, linear cone excursion for high SPL, while maintaining full control over the diaphragm at any excursion stage for highest sound clarity.



### Network Design (X-S65C and X-S69C only)

The super compact network slides open so you can easily gain access to the adjustment jumpers. You can adjust the tweeter level in 3 steps (-3 / 0 / +3 dB) and the tweeter phase (normal / reverse).



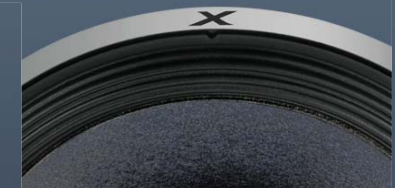
### Hard Dome Tweeter

Instead of using a regular silk dome tweeter, Alpine chose an all-new carbon graphite hard dome tweeter design. This lightweight tweeter dome features improved high range response up to 40kHz to deliver highest sound detail.

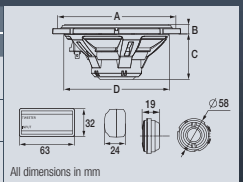


### Nano-Fibre Cone

The woofer cone consists of an all new nano-fibre material to achieve a very fast response speed and dynamic, while keeping high clarity and realistic sound reproduction.



	Peak Power Handling	RMS Power Handling	Nominal Impedance	Frequency Response	Dimensions (mm)			
					A	B	C	D
<b>X-S65C</b> 6-1/2" (16.5cm) COMPONENT 2-WAY SPEAKER	360W	120W	4Ω	60Hz-40kHz	165	8	59	137
<b>X-S65</b> 6-1/2" (16.5cm) COAXIAL 2-WAY SPEAKER	360W	110W	4Ω	60Hz-40kHz	165	8	59	137
<b>X-S69C</b> 6x9" (16cm x 24cm) COMPONENT 2-WAY SPEAKER	330W	120W	4Ω	60Hz-40kHz	119 x 167	9	78	148 x 223



All dimensions in mm





The all-new X-Series amplifiers set a new standard for sound quality performance and power output in a very compact design.

#### All Digital Design

Compact and Powerful: the new digital amplification circuit allows very high power output while keeping a small footprint.

#### Smart Installation

We fully redesigned the speaker and power supply terminal connectors: the very compact design allows clean and simple installation with lossless connectivity.

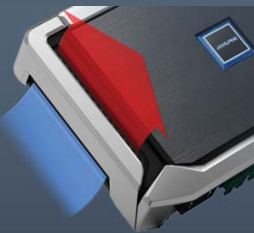
#### Sound Quality Performance

The new X-Series amps are designed for true Hi-Res Audio playback, featuring ultra-low distortion and a wide frequency range.



#### Thermal Management

The new heat sink design uses the chimney effect to move cold air over the heat sink and transfer heat away from the amp. Combined with IC controlled overheating protection, the X-Series amps play without shutdown from overheating.



	X-A90M	X-A70F	X-A90V
Output Channels	Mono	4 Channels	5 Channels
Max Power Output	1800W	1400W	1800W
RMS Power Output [@14.4V 1%THD]	1 x 900W (2Ω) 1 x 600W (4Ω)	4 x 175W (2Ω) 4 x 120W (4Ω)	4 x 100W + 1 x 500W (2Ω) 4 x 75W + 1 x 300W (4Ω)
Amplification Circuit	Class-D	Class-D	Class-D



**Common Features:** Selectable Variable HP filter (4 and 5 channel models only)  
 • Mono amps provide Variable LP, Selectable Subsonic Filters (mono only)  
 • Remote Bass Knob Ready (mono and 5ch only) • Thermal and Low Voltage Protection  
 • Ultra Wide Frequency Response Range • Quick Connectors for Speakers and power terminal



Introducing the ultimate subwoofer: this monster sub is designed to handle power - a lot of power: 2700 Watts peak, to be exact.

#### All New Design

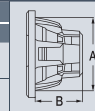
The X-Series subwoofers are newly designed from the ground up to perfectly match the new X-Series amplifiers and to include the latest improvements in materials and technologies. The new concealed mounting system hides the screws and creates an air-tight seal for great looks and improved reliability. Available in 12-inch and 10-inch configuration, these subwoofers are class-leading in terms of bass output and clarity.

#### Voice Coil Cooling System

A venting system forces hot air out and cool air in, keeping the voice coils cool. Better cooling means better performance and longer life.



	Peak Power Handling	RMS Power Handling	Nominal Impedance	Frequency Response	Dimensions (mm)	
					A	B
<b>X-W12D4</b> 12" (30cm) SUBWOOFER	2700W	900W	4Ω+4Ω	22-400Hz	281	184
<b>X-W10D4</b> 10" (25cm) SUBWOOFER	2700W	900W	4Ω+4Ω	24-400Hz	229	172



**Common Features:** Pulp/Mica layered cone • Polypropylene dust cap • Concealed mount gasket • Rubber HAMR surround • Triple-Stacked Ferrite magnet (Y35) • 28mm Xmax • Dual shorting rings

Recommended Enclosure	Sealed Enclosure		Vented Enclosure	
	Recommended	Recommended Volume	Round Port Dia. x L (cm)	Slot Port W x H x L (cm)
<b>X-W12D4</b>	25,5 L	51,0 L	10,2 x 40,6	35 x 2,33 x 40,6
<b>X-W10D4</b>	18,4 L	39,7 L	8,9 x 44,5	30 x 2,1 x 44,5



**R** SERIES

# R-Series: Powerful Bass and High Clarity



Meet the latest generation of R-Series speakers: engineered to deliver high bass power while maintaining extreme sound clarity.

### Outstanding Clarity

The all-new voice coil is made of Aluminium, compared to the regular copper wire coils. The benefit is higher clarity especially in the mid-high frequency area. Both component and coaxial models feature a ring tweeter that swivels to improve off-axis response in less-than-ideal locations.



### Wave Guide Focuses the Sound

Alpine has developed a Wave Guide for the cone to further improve sound quality. Mounted over the centre cap, it prevents phase distortion of the sound waves from the diaphragm, and focuses the sound for optimum clarity.



### Easy To Install Network

The external network is very compact and easy to install. Simply slide open the cover to gain access to the tweeter level adjustment (0dB / -2dB / -4dB / -6dB). This ensures a perfect balance between woofer and tweeter level in your car.



### HAMR Surround

The High Amplitude Multi-Roll (HAMR) surround allows a maximum, linear cone excursion for high SPL, while maintaining full control over the diaphragm at any excursion stage for highest sound clarity.



### Included Trim-Rings

To allow easy installation in a wide range of vehicles, we included several trim rings and a 6 x 8" adapter.



		Peak Power Handling	RMS Power Handling	Nominal Impedance	Frequency Response	Dimensions (mm)				
						A	B	C	D	
<b>R-S65C</b>	6-1/2" (16.5cm) COMPONENT 2-WAY SPEAKER	300W	100W	4Ω	65Hz-29kHz	165	12	59	136	
<b>R-S65</b>	6-1/2" (16.5cm) COAXIAL 2-WAY SPEAKER	300W	100W	4Ω	65Hz-29kHz	165	12	59	136	
<b>R-S69</b>	6x9" (16cm x 24cm) COAXIAL 2-WAY SPEAKER	300W	100W	4Ω	60Hz-29kHz	119 x 167	10	72	148 x 223	
<b>SPR-50C*</b>	5-1/4" (13cm) COMPONENT 2-WAY SPEAKER	300W	100W	4Ω	70Hz-29kHz	139	9,9	57	118	
<b>SPR-50*</b>	5-1/4" (13cm) COAXIAL 2-WAY SPEAKER	270W	90W	4Ω	70Hz-29kHz	139	9,9	57	118	

\* Previous generation model





With their high power output, the Alpine PDR amplifiers are a perfect match for the R-Series speakers and subwoofers.

### Awesome Power Density, Digital Sound Quality

Each PDR amp is unmatched in its class for power density performance (watts per cubic cm) and damping factor. You get tremendous power at all levels, with hard-hitting bass. S/N ratios and frequency response are also outstanding.

switch-mode  
**DIGITAL**

### Designed for Convenient Installation

All the terminals are located on one side of the amp, allowing easy installation anywhere in the boot or under a seat. The control panel is on the top for easy access, and the logo orientation can be selected so it always faces in the right direction.



**Common Features:** Input Gain adjustment 0,2V-8V (0,1V - 4V for mono) • Bass EQ • Variable Filters HP&LP • Thermal Protection • Remote Bass Knob Ready (PDR-M65 & PDR-V75 only)

	PDR-M65	PDR-F50	PDR-V75
<b>Output Channels</b>	Mono	4 Channels	5 Channels
<b>Power (@14.4V 1%THD)</b>	14.4V 4Ω 1 x 450W	4 x 85W	4 x 75W + 1 x 250W
	14.4V 2Ω 1 x 650W	4 x 125W	4 x 100W + 1 x 350W
<b>BTL</b>	—	2 x 250W	2 x 200W
<b>Max Power Output</b>	1300W	1000W	1300W
<b>Function</b>	Filter: Variable LPF	Variable, OFF/LP/HP Selectable	CH1-4: Variable On/HPF-selectable CH5: Variable LPF
	LP: 50Hz - 400Hz -24dB/oct	50Hz - 400Hz -12dB/oct	50Hz-400Hz -24dB/oct (Sch only)
	HP: —	50Hz - 400Hz -12dB/oct	50Hz-400Hz -12dB/oct
	Subsonic Filter: 8Hz-40Hz -24dB/oct	—	8Hz-40Hz -24dB/oct
	Bass EQ: 0dB to +12dB Variable	Ch3-4: 0, +6, 12dB (Selectable)	0dB to +12dB Variable

The new R-Series subwoofers provide the kind of real power and massive bass only hinted at by other subs.

### The Next Evolution of Proven Performance

Although the R-Series subwoofers are new for 2018, they actually come from an impressive Alpine lineage – the Type-R subwoofers. Type-R subwoofers have been known for their power handling, clean output and deep bass excursion. Using the highly successful Type-R subwoofers as a foundation, we applied various performance and hardware improvements to the design, essentially transforming them into the new R-Series subwoofers.

	Peak Power Handling	RMS Power Handling	Nominal Impedance	Frequency Response	Dimensions (mm)	
					A	B
<b>SWR-8D2*/-8D4**</b>	8" (20cm) SUBWOOFER	1000W	350W	*2Ω+2Ω **4Ω+4Ω	30Hz-200Hz	176 115
<b>R-W10D2*/-10D4**</b>	10" (25cm) SUBWOOFER	2250W	750W	*2Ω+2Ω **4Ω+4Ω	26Hz-200Hz	230,5 149
<b>R-W12D2*/-12D4**</b>	12" (30cm) SUBWOOFER	2250W	750W	*2Ω+2Ω **4Ω+4Ω	24Hz-200Hz	275 161,8
<b>SWR-1522D*/-1542D**</b>	15" (38cm) SUBWOOFER	2000W	750W	*2Ω+2Ω **4Ω+4Ω	*18Hz-400Hz **20Hz-400Hz	348,6 234

**Common Features:** Kevlar-Reinforced Carbon Fibre Cone • Aluminium honeycomb • High-efficiency thermal management • High-Amplitude Multi-Roll Surround • Heavy-gauge push terminals

Recommended Enclosure	Sealed Enclosure		Vented Enclosure	
	Recommended	Recommended Volume	Round Port Dia. x L (cm)	Slot Port W x H x L (cm)
<b>SWR-8D2/-8D4</b>	8,5 L	19,8 L	7 x 47	6,2 x 6,2 x 47
<b>R-W10D2/-10D4</b>	17 L	39,6 L	9 x 25	6 x 12 x 37
<b>R-W12D2/-12D4</b>	25,5 L	53,8 L	10 x 33	11 x 9 x 51
<b>SWR-1522D/-1542D</b>	49,6 L	82,1 L	2 ports of 10 x 39	10 x 15 x 45

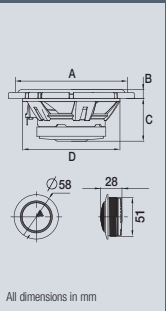


# Amazing Speakers to Fit Your Car and Your Budget

The all-new Alpine S-Series speakers deliver amazing sound quality and go easy on your wallet. They feature the Alpine HAMR surround for high linearity and accuracy, as well as a new patented CFRP cone for excellent clarity and responsiveness.



	Peak Power Handling	RMS Power Handling	Nominal Impedance	Frequency Response	Dimensions (mm)			
					A	B	C	D
<b>S-S65C</b> 6-1/2" (16.5cm) COMPONENT 2-WAY SPEAKERS	240W	80W	4Ω	70Hz-22kHz	153	12	58	128
<b>S-S65</b> 6-1/2" (16.5cm) COAXIAL 2-WAY SPEAKERS	240W	80W	4Ω	70Hz-22kHz	153	20	58	128
<b>S-S50</b> 5-1/4" (13.5cm) COAXIAL 2-WAY SPEAKERS	170W	55W	4Ω	80Hz-22kHz	129	16	50	113
<b>S-S40</b> 4" (10cm) COAXIAL 2-WAY SPEAKERS	140W	45W	4Ω	97Hz-22kHz	102	13	43	93
<b>S-S69C</b> 6x9" (16x24cm) COMPONENT 2-WAY SPEAKER	260W	85W	4Ω	65Hz-22kHz	167 x 60	7	74	222 x 150
<b>S-S69</b> 6x9" (16x24cm) COAXIAL 2-WAY SPEAKER	260W	85W	4Ω	65Hz-22kHz	167 x 60	7	74	222 x 150



### Optional Grilles

The S-Series speakers come without grilles. Optional grilles are available as shown here.

#### S-Series Speaker Grilles

<b>KTE-S65G</b>	For use with S-S65C and S-S65
<b>KTE-S50G</b>	For use with S-S50
<b>KTE-S69G</b>	For use with S-S69C and S-S69



## Powerful yet Affordable: V-Power Digital Amplifiers

Tens of thousands have relied on V-Power amplifiers for dependable, quality power. Now in their fourth generation, V-Power amplifiers carry on this heritage and prove that playing strong never looked or sounded better. Yes, it is possible to improve upon a good thing.



	MRV-V500	MRV-F300	MRV-M1200	MRV-M500	MRV-M250
<b>Output Channels</b>	5 Channels	4 Channels	Mono	Mono	Mono
<b>Max Power Output</b>	1100W	640W	2400W	1100W	550W
<b>RMS Power Output [@14.4V 1%THD]</b>	4x 60W + 1x 250W(2Ω) 4x 40W + 1x 150W(4Ω)	4x 75W (2Ω) 4x 50W (4Ω)	1 x 1200W (2Ω) 1 x 600W (4Ω)	1 x 500W (2Ω) 1 x 300W (4Ω)	1 x 250W (2Ω) 1 x 150W (4Ω)
<b>Amplification Circuit</b>	Class-D	Class-D	Class-D	Class-D	Class-D

Common Features: Input Gain adjustment 0,2V-4V, Bass EQ, Selectable Variable Filters HP&LP (Mono amps: LP only), Speaker Level Input, Thermal Management Processor



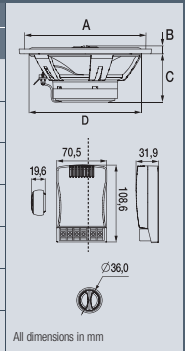


# Excellent Sound with High Power Handling

The Type-G Series of component and coaxial speakers are designed to sound great on head unit power. They have high performance soft dome tweeters and crossover networks, and are extremely easy to install.



		Peak Power Handling	RMS Power Handling	Nominal Impedance	Frequency Response	Dimensions (mm)			
						A	B	C	D
<b>SPG-17CS</b>	COMPONENT 2-WAY SPEAKER	280W	70W	4Ω	68Hz-20kHz	155,6	7,6	60,2	140,3
<b>SPG-13CS</b>	COMPONENT 2-WAY SPEAKER	250W	65W	4Ω	65Hz-20kHz	139,3	8,2	42,2	109,9
<b>SPG-17C2</b>	COAXIAL 2-WAY SPEAKER	240W	60W	4Ω	68Hz-20kHz	155,6	9,9	60,2	140,3
<b>SPG-13C2</b>	COAXIAL 2-WAY SPEAKER	200W	50W	4Ω	82Hz-20kHz	139,3	16,5	42,2	109,9
<b>SPG-69C3</b>	COAXIAL 3-WAY SPEAKER	350W	90W	4Ω	65Hz-19kHz	167 x 119	12,2	75,6	149,9
<b>SPG-69C2</b>	COAXIAL 2-WAY SPEAKER	300W	75W	4Ω	65Hz-18kHz	167 x 119	12,2	75,6	149,9
<b>SPG-10C2</b>	COAXIAL 2-WAY SPEAKER	180W	45W	4Ω	101Hz-20kHz	117,1	13,5	42,5	90,4



## High Power Handling

The new Type-G Series of component and coaxial speakers are designed and built to handle high power levels.

## Ease of Installation

Snap Fit tweeter, swivel mount, and flush install bracket make installation easy. The crossover network is small and can be separated into two parts to further reduce size and allow use of factory wiring.

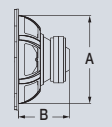
## Good Sound Quality

They deliver good sound quality, due to a soft dome tweeter, square voice coil wire with Kapton VC bobbin and an audio tuned capacitor.



Recommended Enclosure	Sealed Enclosure	Vented Enclosure		
	Recommended	Recommended Volume	Round Port Dia. x L (cm)	Slot Port W x H x L (cm)
<b>SWG-1244</b>	27,8 L	40 L	8,9 x 20	35 x 1,78 x 20
<b>SWG-1044</b>	16,9 L	26,9 L	7,0 x 24	30 x 1,28 x 24
<b>SWG-844</b>	15,3 L	25 L	7,0 x 20	25 x 1,53 x 20

		Peak Power Handling	RMS Power Handling	Nominal Impedance	Frequency Response	Dimensions (mm)	
						A	B
<b>SWG-1244</b>	12" (30cm) SUBWOOFER	800W	250W	4Ω	28Hz-1kHz	278	169
<b>SWG-1044</b>	10" (25cm) SUBWOOFER	500W	150W	4Ω	33Hz-1kHz	235	141
<b>SWG-844</b>	8" (20cm) SUBWOOFER	400W	120W	4Ω	34Hz-1,5kHz	183	111



## High Power, Great Value

This amp delivers high output power and exceptional performance for its class. A great way to expand your sound system on a limited budget.



	<b>BBX-F1200</b>	<b>BBX-T600</b>
<b>Output Channels</b>	4 Channels	2 Channels
<b>Power (Ø14.4V 1%THD)</b>	<b>14.4V, 4Ω</b>	4 x 50W (4Ω)
	<b>14.4V, 2Ω</b>	4 x 70W (2Ω)
<b>Max Power Output</b>	<b>BTL</b>	2x130W (bridged)
		1 x 130W (bridged)
<b>Function</b>	<b>Filter</b>	Variable, OFF/LP/HP Selectable
	<b>LP</b>	50Hz - 500Hz -12dB/oct
	<b>HP</b>	50Hz - 500Hz -12dB/oct
	<b>Bass EQ</b>	0dB to +12dB Variable (3/4ch only)



**Common Features:** Input Gain adjustment 0,2V-8V, Bass EQ, Variable Filters HP&LP, Thermal Protection



# Affordable Upgrading to Higher Performance.

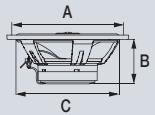
The Type-E Custom Fit speakers allow easy, do-it-yourself installation in a wide range of cars. Offering impressive full-range performance, they can be powered from the head unit, so are a high-value choice for upgrading from factory speakers.



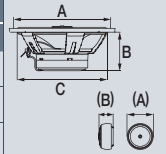
## SPS-110TW COMPONENT TWEETER

- 300W Peak
- 100W RMS
- Impedance: 4Ω
- Cutoff diameter: 2" (5.1 cm) circle
- Mounting depth: 3/4" (1.8 cm)
- Frequency Response: 1kHz to 22kHz

	Peak Power Handling	RMS Power Handling	Nominal Impedance	Frequency Response	Dimensions (mm)		
					A	B	C
<b>SXE-2035S</b> COAXIAL 3-WAY SPEAKER	280W	45W	4Ω	40Hz-20kHz	198.0	74	181.6
<b>SXE-6925S</b> COAXIAL 2-WAY SPEAKER	280W	45W	4Ω	40Hz-20kHz	117.5 x 166.5	79.5	150 x 219
<b>SXE-5725S</b> COAXIAL 2-WAY SPEAKER	200W	35W	4Ω	70Hz-20kHz	102.7 x 125.5	62	126 x 183
<b>SXE-4625S</b> COAXIAL 2-WAY SPEAKER	150W	20W	4Ω	90Hz-20kHz	72 x 129	37	85 x 142
<b>SXE-1725S</b> COAXIAL 2-WAY SPEAKER	220W	40W	4Ω	60Hz-20kHz	165	46	139
<b>SXE-1325S</b> COAXIAL 2-WAY SPEAKER	200W	35W	4Ω	70Hz-20kHz	129	48.5	114
<b>SXE-1025S</b> COAXIAL 2-WAY SPEAKER	180W	25W	4Ω	100Hz-20kHz	100	43	92
<b>SXE-0825S</b> COAXIAL 2-WAY SPEAKER	150W	20W	4Ω	120Hz-16kHz	87	35.5	72



	Peak Power Handling	RMS Power Handling	Nominal Impedance	Frequency Response	Dimensions (mm)		
					A (Tweeter)	B (Tweeter)	C
<b>SXE-1750S</b> COMPONENT 2-WAY SPEAKER	280W	45W	4Ω	60Hz-20kHz	165 (30)	46 (17.5)	139
<b>SXE-1350S</b> COMPONENT 2-WAY SPEAKER	250W	40W	4Ω	60Hz-20kHz	129 (30)	48.5 (17.5)	114
<b>SXE-1006TW</b> COMPONENT TWEETER	280W	45W	4Ω	4kHz - 20kHz	(30)	(17.5)	30



The Type-E subwoofers give you the bass boost you're looking for at prices that won't break your budget.



Recommended Enclosure	Sealed Enclosure	Vented Enclosure		
	Recommended	Recommended Volume	Round Port Dia. x L (cm)	Slot Port W x H x L (cm)
<b>SWE-1244E</b>	62 L	77 L	12 x 28	35 x 3.2 x 28
<b>SWE-1044E</b>	37 L	52 L	10 x 22	30 x 2.6 x 22

	Peak Power Handling	RMS Power Handling	Nominal Impedance	Frequency Response	Dimensions (mm)	
					A	B
<b>SWE-1244E</b> 12" (30cm) SUBWOOFER	650W	200W	4Ω	30Hz-500Hz	280	131
<b>SWE-1044E</b> 10" (25cm) SUBWOOFER	500W	150W	4Ω	33Hz-800Hz	232	116



**SBE-1244BR/1044BR**  
READY TO USE BASS REFLEX SUBWOOFER BOX



**SWE-815**  
8" (20cm) POWERED SUBWOOFER BOX

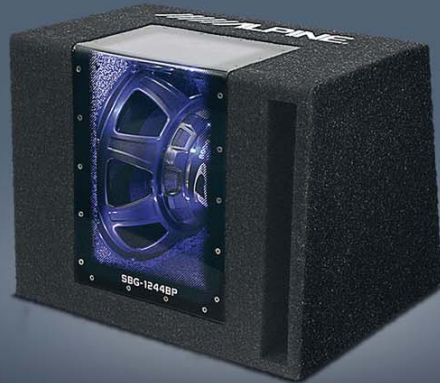
		Peak Power Handling	RMS Power Handling	Nominal Impedance
<b>SBE-1244BR</b>	12" (30cm) READY TO USE BASS REFLEX SUBWOOFER BOX (4Ω)	650W	200W	4Ω
<b>SBE-1044BR</b>	10" (30cm) READY TO USE BASS REFLEX SUBWOOFER BOX (4Ω)	500W	150W	4Ω
<b>SWE-815</b>	8" (20cm) POWERED SUBWOOFER BOX	150W	75W	2x2Ω





# Subwoofer Boxes for Deep, Resonant Bass

The SBG ready-to-use box line is our most sold subwoofer in Europe. Customers appreciate the strong bass performance, stylish appearance and affordable price point.

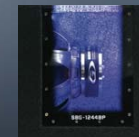


**SBG-1224BP/1244BP**  
READY TO USE BAND PASS SUBWOOFER BOX



**SBG-1224BR/1244BR**  
**SBG-1044BR SBG-844BR**  
READY TO USE BASS REFLEX SUBWOOFER BOX

	Peak Power Handling	RMS Power Handling	Nominal Impedance
<b>SBG-1224BP</b> 12" (30cm) READY TO USE BAND PASS SUBWOOFER BOX	800W	250W	2Ω
<b>SBG-1244BP</b> 12" (30cm) READY TO USE BAND PASS SUBWOOFER BOX	800W	250W	4Ω
<b>SBG-1224BR</b> 12" (30cm) READY TO USE BASS REFLEX SUBWOOFER BOX	800W	250W	2Ω
<b>SBG-1244BR</b> 12" (30cm) READY TO USE BASS REFLEX SUBWOOFER BOX	800W	250W	4Ω
<b>SBG-1044BR</b> 10" (25cm) READY TO USE BASS REFLEX SUBWOOFER BOX	500W	150W	4Ω
<b>SBG-844BR</b> 8" (20cm) READY TO USE BASS REFLEX SUBWOOFER BOX	400W	120W	4Ω



## Blue illumination Window

Acrylic windows provide an inside view and the blue illumination adds a cool effect. Its fully enclosed structure ensures that nothing sliding around in the trunk damages the woofer.



**SWD-355**  
12" (30cm) AMPLIFIED SUBWOOFER BOX



**SBG-30KIT**  
HIGH PERFORMANCE SUBWOOFER PACKAGE



**SWT-12S4**  
12" (30cm) BASS REFLEX SUBWOOFER TUBE



**PWE-V80**  
8" (20cm) POWERED SUBWOOFER BOX



**PWE-S8**  
8" (20cm) POWERED SUBWOOFER BOX



**SWE-1200**  
8" (20cm) POWERED SUBWOOFER BOX



	Peak Power Handling	RMS Power Handling	Nominal Impedance
<b>SBG-30KIT</b> HIGH PERFORMANCE SUBWOOFER PACKAGE	550W	250W	2Ω
<b>SWD-355</b> 12" (30cm) AMPLIFIED SUBWOOFER BOX	550W	150W	4Ω
<b>SWT-12S4</b> 12" (30cm) BASS REFLEX SUBWOOFER TUBE	1000W	300W	4Ω
<b>PWE-V80</b> 8" (20cm) POWERED SUBWOOFER BOX	150W	80W	-
<b>PWE-S8</b> 8" (20cm) POWERED SUBWOOFER BOX	240W	120W	-
<b>SWE-1200</b> 8" (20cm) POWERED SUBWOOFER BOX	150W	75W	-



[www.alpine-europe.com](http://www.alpine-europe.com)

**ALPINE ELECTRONICS (EUROPE) GmbH**

Wilhelm-Wagenfeld-Straße 1-3, 80807 München, Germany

Tel : +49 / (0) 89-32 42 64-0 Fax : +49 / (0) 89-32 42 64-241



Alpine Style Europe



AlpineEurope



Apple, iPhone, and iPod are trademarks of Apple Inc., registered in the U.S. and other countries. Apple CarPlay is a trademark of Apple Inc. App Store is a service mark of Apple Inc. "Made for iPod," and "Made for iPhone," mean that an electronic accessory has been designed to connect specifically to iPod or iPhone, respectively, and has been certified by the developer to meet Apple performance standards. Apple is not responsible for the operation of this device or its compliance with safety and regulatory standards. Please note that the use of this accessory with iPod, or iPhone may affect wireless performance. Google, Google Play, Android and Android Auto are trademarks of Google LLC. Unauthorized use is strictly prohibited. DivX, DivX Certified and associated logos are trademarks of DivX, Inc. and are used under license. The Bluetooth® word mark and logos are registered trademarks owned by Bluetooth® SIG, Inc. and any use of such marks by Alpine Electronics, Inc. is under license. The terms HDMI and HDMI High-Definition Multimedia Interface, and the HDMI Logo are trademarks or registered trademarks of HDMI Licensing LLC in the United States and other countries. Windows Media and the Windows logo are trademarks, or registered trademarks of Microsoft Corporation in the United States and/or other countries. The words "Dolby Digital", "Pro Logic", "Dolby", and the "Double-D" symbol are trademarks of Dolby Laboratories. "DTS" and "DTS Digital Surround" are registered trademarks of DTS, Inc. and "DTS 2.0 + DigitalOut" is a trademark of DTS, Inc. © 2013 HERE. ©2006-2016 TomTom. All rights reserved. Design, specifications and availability of Alpine products are subject to change without notice. No liability for printing errors is assumed. Alpine catalogues are printed on chlorine-free paper.

\*Spotify control requires a smartphone connection with Apple CarPlay or Android Auto, as well as an internet connection.