

***Psathyrella leucotephra* (Berk. & Broome) {as leucotrepha} P. D. Orton 1960** in Trans. Brit. Mycol. Soc. 43 (2) : 180 (1960)

**Daniel Deschuyteneer & Nicolò Parrino**

**MycoBank:** 102022

**Synonymy:**

*Agaricus leucotephrus* Berk. & Broome, *Ann. Mag. nat. Hist.*, Ser. 4 6: 468 (1870)

*Drosophila leucotephra* (Berk. & Broome) Kühner & Romagn., *Fl. Analyt. Champ. Supér.* (Paris): 367 (1953)

*Hypholoma leucotephrum* (Berk. & Broome) Sacc., *Syll. fung.* (Abellini) 5: 1040 (1887)

*Psathyra leucotephra* (Berk. & Broome) G. Bertrand [as '*leucotrepha*'], *Bull. Soc. mycol. Fr.* 29: 187 (1913)

**Misappl.:**

*Stropharia hypsipoda* ("*hypsipoda*") (Fr.) P. Karst. ss. J. E. Lange 1939 in *Fl. Agar. Dan.* 4: 70

*Hypholoma appendiculatum* var. *hypsipus* ("*hypsipodum*") ss. Big. & Guill. 1913 in *Fl. Champ. sup. Fr.* 2: 282

**Etymology:** from Greek leuko's (white) refers to the colour of the cap and tephro's (ash beige) refers to the colour of the lamella.

**Habitat:**

Large size species, caespitose at base of tree stumps or dead parts of deciduous trees, among woody debris, in forests, summer to autumn.

## Place of find



Bosco Romagno - locality Croaretto - Prepotto (Udine), Italy - 150 m. a.s.l.

It was found at the edge of a forest road on a ridge in a forest with various species, mainly *Fraxinus excelsior* and *Quercus cerris*, on an almost gravelly ground.



Photos in situ Nicolò Parrino

### Macrocharacters:

**Cap** 20-100 mm broad, smooth, convex, later flattened, yellow brown when moist to very pale cream-grey, on drying becoming cream-colour, hardly striated.

**Veil** strongly developed, membranous, connecting the stipe to the cap margin, tearing and leaving at margin appendiculate denticles persistent for a long time.

**Gills** close, young whitish to grey, old blackish brown, edge fimbriate white.

**Stipe** 60-160 x 4-10 (-15) mm, densely caespitose at the base of deciduous trees, cylindrical, hollow, whitish, at base pale yellow-brown and somewhat flocculose, with hanging, membranous annulus up to 10 mm broad in the upper part.

**Smell** not distinctive.

### Microcharacters:

**Spores** : (N = 50) measuring in this collection (7,7) 8,4 - 9,6 (10,5) × (5,3) 5,7 - 6,5 (6,9) μm ; Me = 8,9 × 6 μm ; Q = (1,3) 1,4 - 1,6 (1,8) ; Qe = 1,5, which is in accordance with the data in the literature ; polymorphic, in face view ellipsoid, ovoid, often subtriangular with a truncate base, sometimes irregular in outline, in side view sometimes distinctly flattened, often phaseoliform, germ pore absent. In water and ammonia dark reddish to red brown, in KOH dark brown. Spore print purplish black

**Basidia** 4-spored.

**Cheilocystidia** 24-50 x 7,5-14 μm, lageniform or narrowly utriform, thin walled, hyaline, densely packed, often slightly (sub)capitate.

**Paracystidia** very rare or absent.

**Pleurocystidia** absent.

**Caulocystidia** 30-70 (-80) x 8-15 μm, numerous, polymorphic, broadly lageniform to utriform or digitiform with often a sub-capitate neck. Sometimes septate, often clamped.

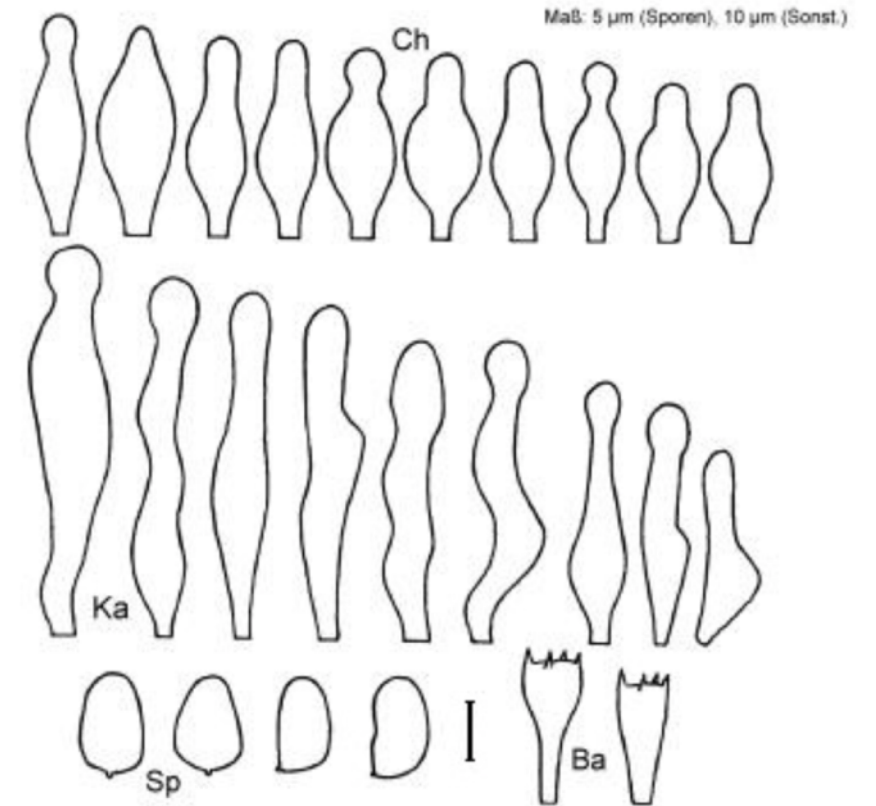
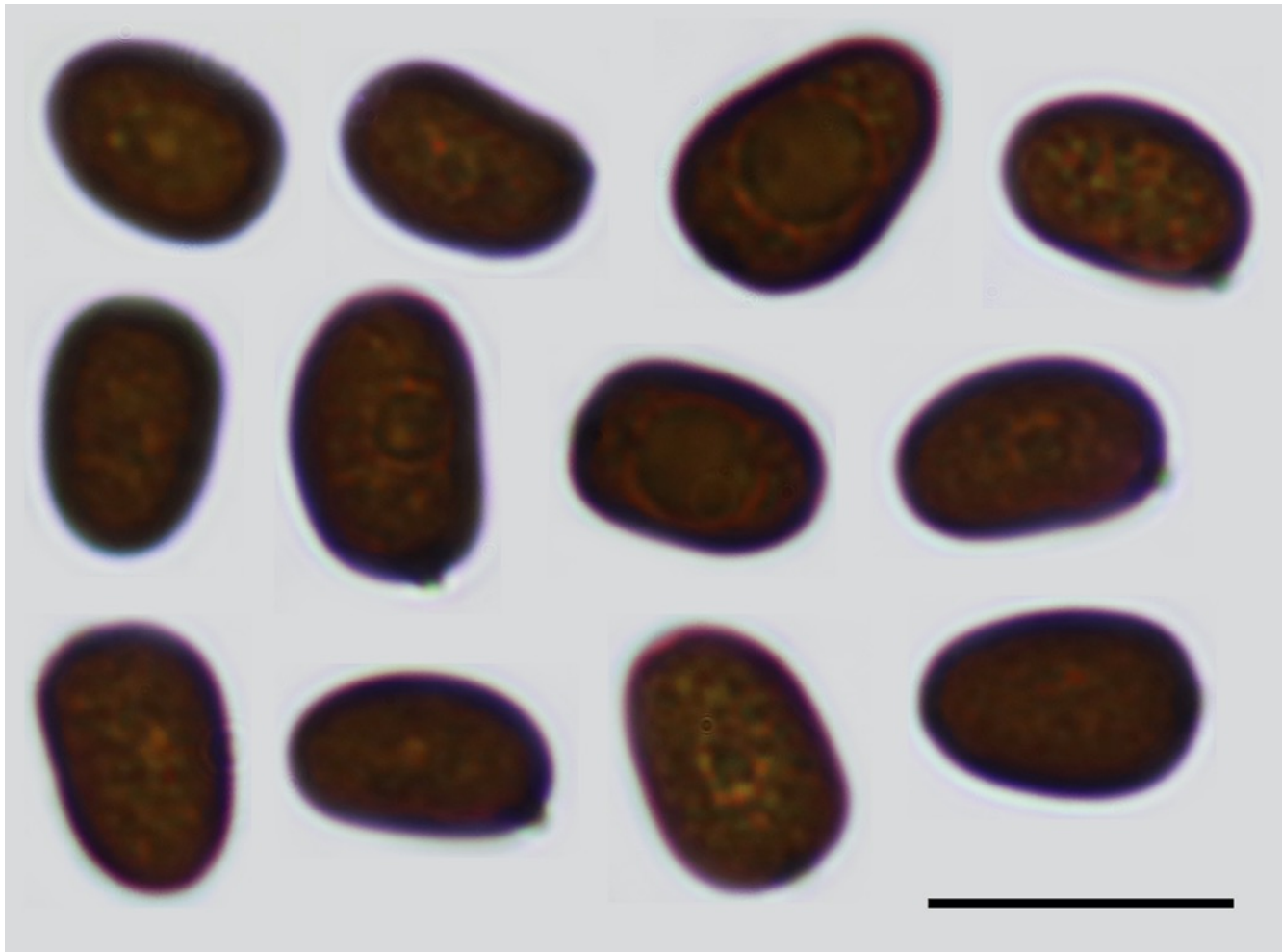
**Clamp** connections present.



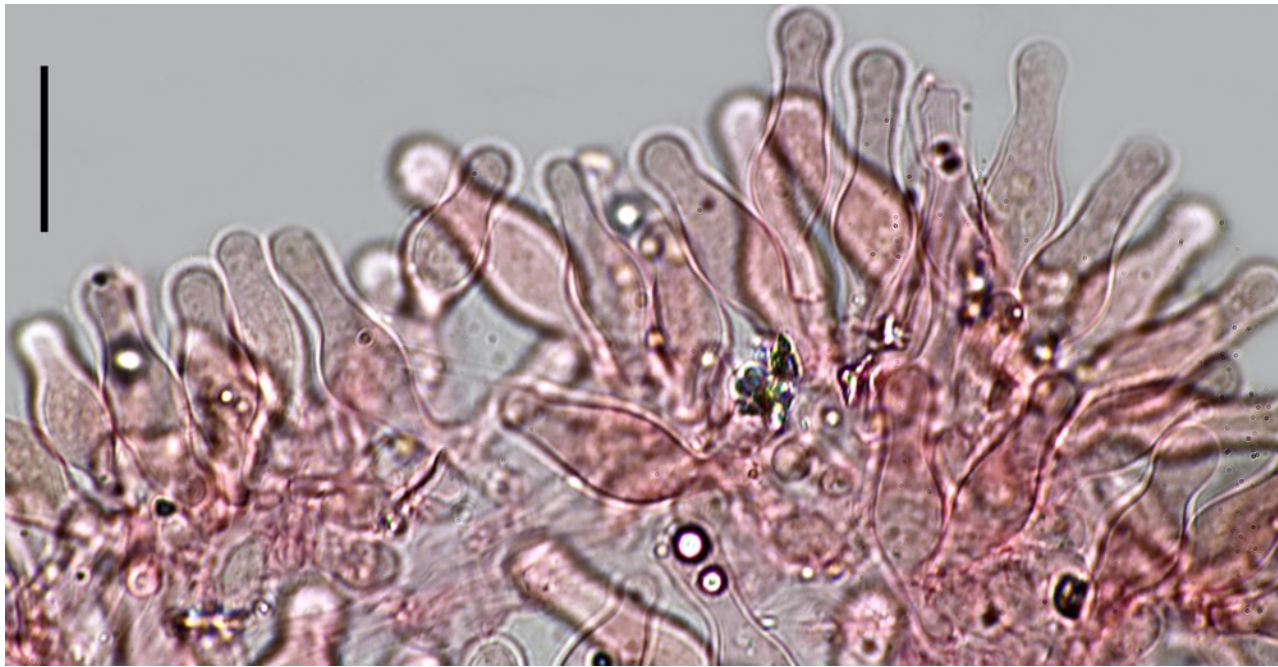
Photos in situ Nicolò Parrino



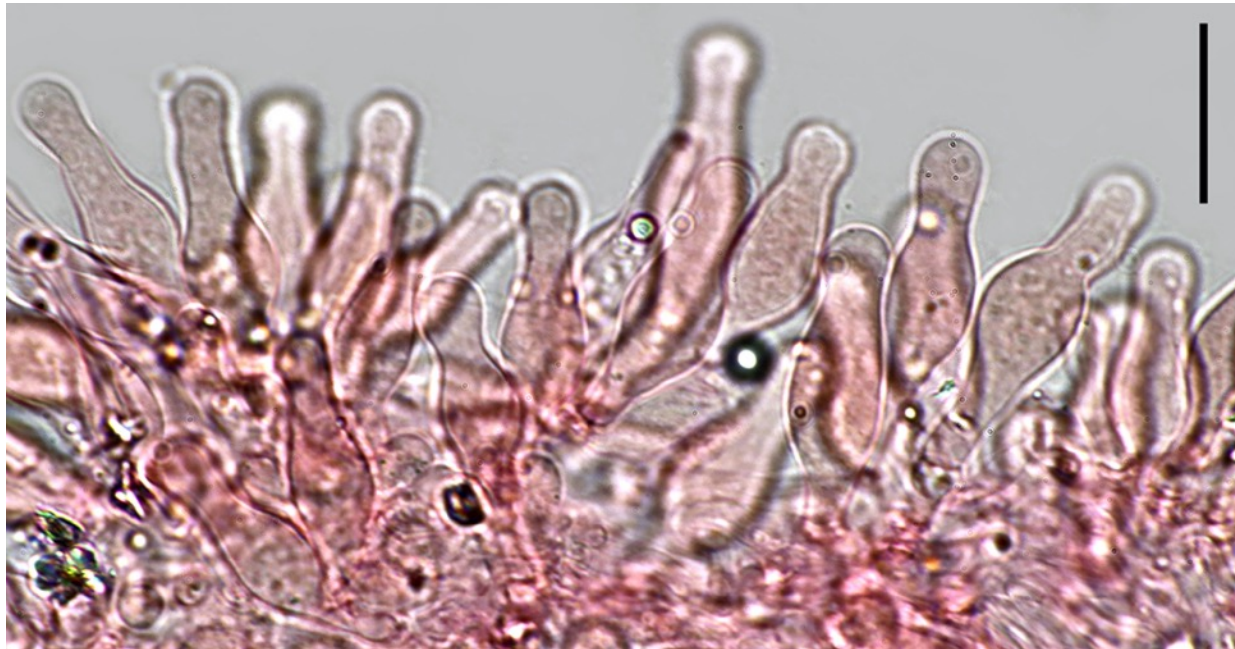
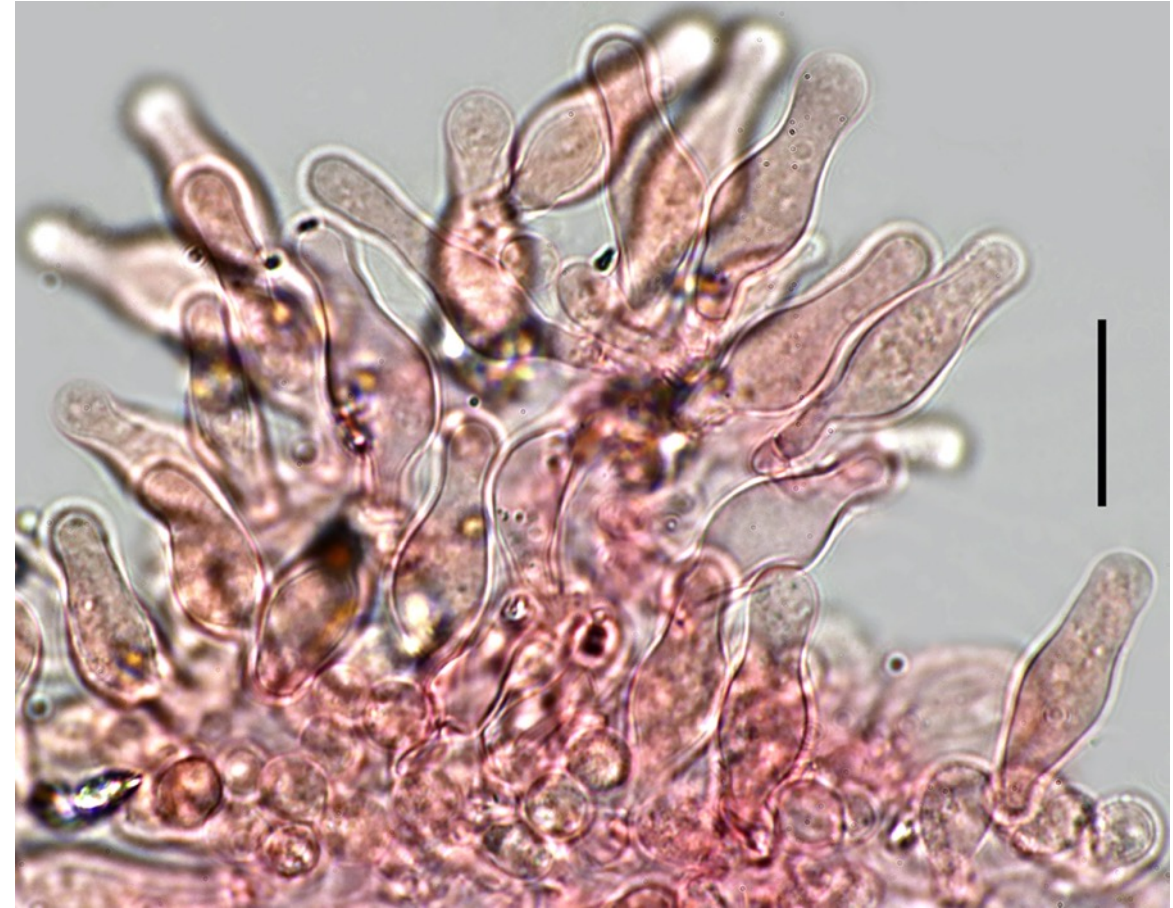
Photos in situ Nicolò Parrino



Spores : (N = 50) measuring in this collection :  
(7,7) 8,4 - 9,6 (10,5) × (5,3) 5,7 - 6,5 (6,9) µm ; Me = 8,9 × 6 µm ;  
Q = (1,3) 1,4 - 1,6 (1,8) ; Qe = 1,5  
which is in accordance with the data in the literature.



Cheilocystidia – Scale bar = 20  $\mu$ m







Caulocystidia – Scale bar = 20  $\mu\text{m}$



Caulocystidia – Scale bar = 20  $\mu\text{m}$



## Litterature

**Arnolds E.**, 2003 – *Rare and interesting species of Psathyrella*. Fungi non delineati XXVI, p. 24-25

**Consiglio G.**, 2005 – *Contributo alla conoscenza dei Macromiceti dell' Emilia-Romagna XXIII, Famiglia Coprinaceae – Parte terza*, pp. 20-21

**Enderle M. & Hübner HJ.**, 2005 - Studien in der Gattung Psathyrella IX

**Kits van Waveren** , 1985 – *The DUTCH, FRENCH and BRITISH species of Psathyrella* – p. 145

D. Deschuyteneer

danieldeschuyteneer@gmail.com