

**Material of type character in the Münch-Bellinghausen collection
in the Moravian Museum, Brno (BRNM)
8. Bryophytes**

KAREL SUTORÝ

*Moravian Museum, Department of Botany, Hviezdoslavova 29a, 627 00 Brno, Czech Republic;
e-mail: ksutory@mzm.cz*

SUTORÝ K. 2009: Material of type character in the Münch-Bellinghausen collection in the Moravian Museum, Brno (BRNM). 8. Bryophytes. *Acta Musei Moraviae, Scientiae biologicae* 94: 137–156. – The contribution presented is the eighth in a series evaluating material from the Münch-Bellinghausen collection in the Moravian Museum, following on from the W. Besser, F. Waldstein, P. Kiteibel, D. H. Hoppe, A. Rochel, K. B. Presl, P. Salzmann and the P. G. Gaertner, B. Meyer and J. Scherbius “Wetterauische Flora” exsiccate collections.

Key words. Moravian Museum, Department of Botany, Münch-Bellinghausen collection, O.C. Blandow, G.E.W. Crome, H.C. Funck, J.C. Schleicher, J.W.P. Hübener

Introduction

In the Münch-Bellinghausen collection in the Moravian museum, bryophytes are preserved in three packets containing 506 folders. These contain not only non-specialized exsiccate collections such as those of Gaertner, Meyer, Scherbius: *Flora von Wetterau* (SUTORÝ 2009) or Reichenbach’s *Flora germanica excursiora*, but also the five following incomplete specialized bryological exsiccate series.

O. C. Blandow (1778–1810): *Musci frondosi exsiccati*, published in 1804–1810, containing 300 specimens (Fig. 1). There are 146 specimens in our collection. See Appendix 1.

G. E. W. Crome (1781–1813): *Sammlung deutscher Laubmose*. Collection was published in 1803–1806 and contained 90 numbers (Fig. 2). There are 37 specimens in our collection. See Appendix 2.

H. C. Funck (1771–1839): *Deutschlands Moose*. Book with 60 tables and 422 rectangles for the specimens published 1820 (Figs 3, 4). In our collection are specimens from 40 tables containing 75 species. See Appendix 3.

Kryptogamische Gewächse (besonders) des Fichtelgebirg’s. An exsiccate series published up to the year 1838 contained 865 numbers (Fig. 4). The last number in our collection is 771, published in 1835. Altogether 276 specimens of these exsiccatates are preserved. See Appendix 4.

J. W. P. Hübener (1807–1847): *Deutschlands Lebermose*. Of 125 numbers published in the years 1810–1837, only numbers 1, 17, 18, 21, 27, 37, 41 and 47 are preserved in our collection (Fig. 5).

J. A. Hose (1769–1800): *Herbarium vivum muscorum frondosorum cum descriptionibus analiticis ad normam Hedwigii*. Only numbers 2, 3, 4, 7, 8, 10, 11, 12 and 40 are preserved in our collection (Fig. 6).

In addition are quite abundant specimens from J. C. Schleicher, D. H. Hoppe and some solitaires from C. B. Presl, H. A. Duval, and M. Rohde. Three specimens of mosses from A. Carl are probably the oldest preserved from Moravia with locality and date.

The list below also contains some specimens with invalidly published names or with specimens documenting nomenclatural combinations subsequently demonstrated to lack any nomenclatural importance. Data on combinations of the basionym were checked against www.tropicos.org, Missouri Botanical Garden.

List of authentic material

Anoetangium hornsuhianum (Hook.) Hornsch ex Funck, *Deutschl. Moose*: 8, 1820

[= *Gymnostomum hornsuhianum* (Hook.) Nees & Hornsch., *Bryologia Germanica* 1: 176, 1823]

Protologue. In alpebus Carinth. (am Gösnitzfall pr. Heiligenblut, Hornsch.).

Notes on our specimen. Krypt. Gew. Fichtelgeb. No. 508.

Remarks. Nomenclatural combination, specimen of no nomenclatural importance.

Barbula arenaria Presl, *Flora* 4(2) Beil. 1: 48, 1821, nom. inval., without description.

Notes on our specimen. *Plantae Siculae* 1819. Original handwritten label “*Arenosa. Vere.*”

Barbula paludosa Schleich. ex F. Weber & D. Mohr, *Taschenbuch* 482, 1807. nom. illeg., type of earlier name included.

Protologue. Without exact locality, “*Caeterum ex Helvetia.*”

Notes on our specimen. Rewritten label “*Als Tortula paludosa von Schleicher aus der Schweiz.*”

Remarks. The species is described within a text that relates to the species *Barbula crocea* (Brid.) F. Weber & D. Mohr. Schleicher published it invalidly as *Tortula paludosa* Schleich., *Cat. Pl. Helv.*, ed 2, 31, 1807, nom. nudum.

Bryum glaciale Schleich., *Cat. Pl. Helv.*, ed. 2, 28, 1807, nom. inval., without description.

Notes on our specimen. Original band with plant name.

Bryum inclinatum (Sw. ex Brid.) Blandow, Uebersicht der Mecklenburgischen Moose 6, 1809, nom. inval., non (Sw. ex Brid.) Turton 1809

[= *Bryum amblyodon* C. Muell.]

Notes on our specimen. Blandow Musci frondosi exsiccati 77 sub *Pohlia inclinata* Swartz Brid.

Remarks. Non-valid combination, specimen of no nomenclatural importance.

Bryum lycopodiiforme Schleich., Cat. Pl. Helv., ed. 2, 28. 1807, nom. inval., without description.

Notes on our specimen. Original band with plant name .

Bryum pallescens Schleich. ex Schwägr., Species Muscorum Frondosorum, Supplementum Primum 2: 107. pl. 75, 1816.

[= name in current use; some of the combinations given below are also in modern use]

Combinations for this basionym: *Ptychostomum pallescens* (Schleich. ex Schwägr.), J. R. Spence. Phytologia 87: 21, 2005. *Plagiobryum pallescens* (Schleich. ex Schwägr.), N. Pedersen. Bryologist 108: 127, 2005. *Bryum pseudotriquetrum* subsp. *pallescens* (Schleich. ex Schwägr.), Dixon. The Students' Handbook of British Mosses, ed 3: 364, 1924.

Protologue. In subalpinis Sudetum et Helvetiae legurunt Schleicher et Car. Ludwig, Salisburgi Flörke, in alpinis graniticis Styriae ego, vere et aestate florens.

Notes on our specimen. Rewritten label “*Von Schleicher aus der Schweiz als B. pallescens*”.

Remarks. “*Bryum pallescens* Schleich. Crypt. Exsicc. Helvet. p. 28” is cited in the protologue. In the Cat. Pl. Helv., ed. 2, 28, 1807 the name “*Bryum pallidum* S.” (*sic*) appears.

Bryum varneum Blandow, Uebersicht der Mecklenburgischen Moose 7, 1809, nom. inval., without description.

Notes on our specimen. Musci frondosi exsiccati 184 sub *Mnium varneum*.

Dicranum aetnense Presl, Flora 4 (Beil. 1): 48, 1821, nom. inval., without description.

Notes on our specimen. Plantae Siculae 1829. Original handwritten label “*Rupes Aetna. Jul.*”

Dicranum arcuatum Schleich., Cat. Pl. Helv., ed. 2, 28, 1807, nom. inval., without description.

Notes on our specimen. Schleicher, without further data.

Dicranum bergeri Bland. in Sturm, Deutschlands Flora, Abtheilung II, Cryptogamie. 10: [7] ic., 1809

[= *Dicranum undulatum* Schrad. ex Brid. 1801]

Protologue. Auf halb trockenen Torf-Wiesen – sehr häufig in Mecklenburg.

Notes on our specimen. Musci frondosi exsiccati 114.

Didymodon flexicaule Schleich. Cat. Pl. Helv., ed. 2, 28, 1807, nom. inval., without description.

Notes on our specimen. Schleicher, without further data, plants problematically assigned.

Encalypta pilifera Funck in Sturm, Deutschlands Flora, Abtheilung II, Cryptogamie 17: [7] ic, 1819 [25 Apr]

Combinations for this basionym: *Leersia extinctoria* var. *pilifera* (Funck) Lindb. Musci Scandinavici 1879. *Encalypta extinctoria* var. *pilifera* (Funck) Hartm. Handbok i Skandinaviens Flora, Tredje Upplagen 3: 268, 1838. *Encalypta vulgaris* var. *pilifera* (Funck) Hueb. Muscologia Germanica 1833. *Encalypta leptodon* var. *pilifera* (Funck) Lindb. Contributio ad Floram Cryptogamam Asiae Boreali-Orientalis 1872. *Encalypta rhabdocarpa* var. *pilifera* (Funck) Nees & Hornsch. Bryologia Germanica 2(1): 41, 14 f. 2. 1827.

Protologue. “In den Rissen der Felsen und Mauern der alten Burgen bey Berneck und Stein”.

Notes on our specimen. Krypt. Gew. Fichtelgeb. No. 527, Deutschlands Moose Tab. 8, species 2.

Grimmia compacta Schleich. Cat. Pl. Helv., ed. 2, 29, 1807, nom. inval., without description.

Notes on our specimen. Rewritten label “Von Schleicher aus der Schweiz.”

Grimmia gracilis Schleich. ex Schwägr. Species Muscorum Frondosorum, Supplementum Primum 1: 98. pl. 23. 1811. nom. illeg., later homonym of *G. gracilis* (Hedw.) F. Weber & D. Mohr 1803. Schleich. Cat. Pl. Helv., ed. 2, 29, 1807, nom. inval., without description.

Notes on our specimen. Rewritten label “1807. *Von Schleicher als Gr. gracilis aus der Schweiz.*”

Gymnostomum conicum Schleich. ex Schwägr., Species Muscorum Frondosorum, Supplementum Primum 1: 26, pl. 9, 1811.

[= name in current use]

Combinations for this basionym: *Pottia rufescens* subsp. *conica* (Schleich. ex Schwägr.) Giacom. Istituto Botanico della R. Università R. Laboratorio Crittogamico Pavia, Atti 4: 213, 1947. *Pottia starkeana* subsp. *conica* (Schleich. ex Schwägr.) D. F. Chamb Notes from the Royal Botanic Garden, Edinburgh 29: 403, 1969. *Microbryum davallianum* var. *conicum* (Schleich. ex Schwägr.) R. H. Zander Bulletin of the Buffalo Society of Natural Sciences 32: 240, 1993. *Pottia conica* (Schleich. ex Schwägr.) Nyholm Illustrated Flora of Nordic Mosses 2: 82, 1989. *Pottia davalliana* var. *conica* (Schleich. ex Schwägr.) Podp. Conspectus Muscorum Europaeorum 1954. *Pottia minutula* var. *conica* (Schleich. ex Schwägr.) Bruch & Schimp. Bryologia Europaea 2: 36, 1843.

Protologue. Legit in Helvetia Schleicher.

Notes on our specimen. Schleicher, without closer data.

Remarks. Schleicher originally published the name as nomen nudum in Cat. Pl. Helv., ed. 2, 29, 1807.

Gymnostomum rupestre Schleich. ex Schwägr. Species Muscorum Frondosorum, Supplementum Primum 1: 31. pl. 11, 1811. (Schleich. Cat. Pl. Helv., ed. 2, 29, 1807, nom. inval., without description.)

[= *Gymnostomum aeruginosum* Sm. 1804]

Combinations for this basionym: *Trichostomum rupestre* (Schleich. ex Schwägr.) Milde Bryologia Silesiaca 1869. *Weisia rupestris* (Schleich. ex Schwägr.) Müll. Hal. Synopsis Muscorum Frondosorum omnium hucusque Cognitorum 1: 657, 1849.

Protologue. Creascit ad rupes madidas in valle Servan Helvetiae. Schleicher Crypt. Helvet. exsicc. Cent. 3. n. 6.

Notes on our specimen. Schleicher, without further data.

Gymnostomum systylium Funck, Cryptogamische Gewächse des Fichtelgebirg's 37: 3, 1832.

[= *Pottia heimii* (Hedw.) Hampe]

Combinations for this basionym: *Pottia systylia* (Funck) H. Philib. Die Laubmoose Deutschlands, Oesterreichs und der Schweiz 1: 540, 1888. *Pottia heimii* var. *systylia* (Funck) Warnst. Hedwigia 58: 96, 18, 1916.

Protologue. Locality for number 749 “*Auf der Höhe des Radstadter Tauren an der Erde, von meinem Sohne Georg im Aug. 31 ges.*”

Notes on our specimen. Krypt. Gew. Fichtelgeb. No. 749.

Hypnum debile Schleich. ex Schultz, Sylloge Plantarum Novarum 2: 215, 1828. nom. illeg., later homonym of Brid. 1812 (Schleich. Cat. Pl. Helv., ed. 2, 29, 1807, nom. inval., without description).

Notes on our specimen. Schleicher 1807, original label with the name *Hypnum debile*.

Hypnum diversifolium (Schimp.) Schleich. ex Sull. & Lesq., The Musci and Hepaticae of the United States, reprint 293 [Schedae 63], 1856, (Schleich. Cat. Pl. Helv., ed. 2, 29, 1807, nom. inval., without description).

Notes on our specimen. Schleicher 1807, original label with the name *Hypnum diversifolium*.

Remarks. Nomenclatural combination, specimens of no nomenclatural importance.

Hypnum emarginatum Schleich., Sylloge Plantarum Novarum 2: 215, 1828, (Schleich. Cat. Pl. Helv., ed. 2, 29, 1807, nom. inval., without description).

[= *Haplohymenium triste* (Ces.) Kindb. 1899]

Protologue. Not seen.

Notes on our specimen. Schleicher 1807, original label with the name *Hypnum emarginatum*.

Hypnum flaccidum Schleich. in Samuel Elisée de Bridel-Brideri, Bryologia Universa 2: 328, 1827. nom. inval. cited as synonym, (Schleich. Cat., Pl. Helv., ed. 2, 29, 1807, nom. inval., without description).

Notes on our specimen. Schleicher 1807, original label with the name *Hypnum flaccidum*.

Hypnum rigidiusculum Blandow, Uebersicht der Mecklenburgischen Moose 11, 1809, nom. inval., without description.

[= *Hypnum praelongum* Hedw.]

Notes on our specimen. Musci frondosi exsiccati 230.

Hypnum rupestre Schleich. ex Spreng., Mantissa Prima Florae Halensis. Addita Novarum Plantarum Centuria 56, 1807, (Schleich. Cat. Pl. Helv., ed. 2, 29, 1807, nom. inval., without description).

[= *Hygrohypnum molle* (Hedw.) Loeske 1903]

Protologue. In monte Simplon ad rupes humidias invenit Schleicher.

Notes on our specimen. Rewritten label “*Als H. rupestre Schleicher von ihm selbst aus der Schweiz.*”

Hypnum subsphaericarpon Schleich. ex Brid., Muscologia Recentiorum Supplementum 2: 232, 1812, (Schleich. Cat. Pl. Helv., ed. 2, 30, 1807, nom. inval., without description).

[= *Hygrohypnum luridum* (Hedw.) Jenn. 1913]

Combinations for this basionym: *Hygrohypnum luridum* var. *subsphaericarpum* (Schleich. ex Brid.) C. E. O. Jensen *Conspectus Muscorum Europaeorum* 1954. *Hygrohypnum subsphaericarpon* (Schleich. ex Brid.) Loeske *Verhandlungen des Botanischen Vereins für die Provinz Brandenburg und die Angrenzenden Länder* 49: 198, 1905. *Stereodon subsphaericarpus* (Schleich. ex Brid.) Brid. *Bryologia Universa* 2: 825, 1827. *Hypnum pseudoplumosum* var. *subsphaericarpon* (Schleich. ex Brid.) Spruce *Annals and Magazine of Natural History*, ser. 2, 3: 281, 1849. *Limnobium subsphaericarpum* (Schleich. ex Brid.) De Not. *Commentario della Società Crittogamologica Italiana* 2: 27, 1867. *Hygrohypnum palustre* var. *subsphaericarpon* (Schleich. ex Brid.) Loeske *Moosflora der Harzes* 1903.

Protologue. In Helvetiae, Galliae et Germaniae palustribus alpinis rivulorum saxis immersisaeis ego. In Gallia prope le Mans ex Herbariis Parisiis etiam lectum esse comperi. adhaerens, rarius in aquis planitie, repertum est. Hallerus primus observavit. Inter recentiores legerunt Schleicher et Thomas in Alpibus Helveticis, Fröhlichius prope Elvacum, in Pyrenaeis ego. In Gallia prope le Mans ex Herbariis Parisiensibus etiam lectum esse comperi.

Notes on our specimen. Rewritten label “*1807 Von Schleicher aus der Schweiz.*”

Remarks. Two exsiccates are cited in the description; the first of them is preserved in our collection: “Schl. Cent. 2. n. 46” and “Hall. St. Helv. N. 1738”.

Jungermannia asplenioides â minor Schleich., Cat. Pl. Helv., ed. 2, 31, 1807, nom. inval., without description, author of the name is not explicitly cited; Schleicher is already given in the 1821 edition.

Notes on our specimen. Schleicher 1807, without further data.

Jungermannia bicuspidata b. filamentosa Schleich., Cat. Pl. Helv., ed. 2, 31, 1807, sine descr. et in synonymis *J. bicornis* Muell. in F. Weber & D. Mohr 1807, nom. illeg.

Notes on our specimen. Schleicher 1807, without further data.

Jungermannia dichotoma Schleich., Cat. Pl. Helv., ed. 2, 31, 1807, sine descr. et in synonymis *J. quinquedentata* (Huds.) L. in F. Weber & D. Mohr 1807, nom. illeg.

[= *Barbilophozia barbata* (Schmidel ex Schreb.) Loeske 1907]

Notes on our specimen. “*Von Schleicher als J. dichotoma Schl. vid. Web. et M. p 340.*” /Recte 430/.

Jungermannia nigricans Schleich., Cat. Pl. Helv., ed. 2, 31, 1807, sine descr. et in synonymis *J. dilatata* Weber in F. Weber & D. Mohr 1807, nom. inval.

Notes on our specimen. Schleicher 1807, without further.

Jungermannia triangularis Schleich., Pl. Crypt. Helv. Exsicc., Cent. 2, n. 61, 1803, (Schrader /ed./, Neues J. Bot. 1(2): 197, 1805 “1806”), nom. inval. (Cat. Pl. Helv., ed. 2, 31, 1807, sine descr. et in synonymis *J. trilobata* â *minor* Weber in F. Weber & D. Mohr 1807).

[= *Bazzania tricrenata* (Wahlenb.) Trevis. 1877]

Notes on our specimen. Schleicher 1807, without further data.

Leskea repens (Brid.) Schleich. ex Schultz, Sylloge Plantarum Novarum 2: 200, 1828.

[= *Platygyrium repens* (Brid.) Schimp. 1851]

Notes on our specimen. Schleicher 1807.

Remarks. Combination of the name *Pterigynndrum repens* Brid. 1806. Specimen of no nomenclatural importance. This name appears for the first time in Schleich. Cat. Pl. Helv. 30, 1807, without the given Brid citation.

Mielichhoferia nitida Nees & Hornsch., Bryologia Germanica 2(2): 183. pl. 41, 1831. nom. illeg., type of earlier name *Weissia mielichhoferiana* Funck in Hornsch 1819 included, see name below.

[= *Mielichhoferia mielichhoferiana* (Funck) Loeske 1910]

Protologue. “...auf verwitterten Kalkschiefer-Felsen um das Grubenhaus und die Stollenöffnungen der Grube „Schwarzwand“ in der Grosarl im Salzburgischen Mielichhofer! Hsch., Funck! Laurer! Müller!), auf Felsen in der Gesselschaft mit *Grimmia atrata* Mlchfr. Auf den Malnitzer-Tauern (Rudolphi Müller), an der Messerlingwand auf dem Windisch-Mattreyer Tauern, auf der Leiter-Alpe bei Heiligenblut (Hsch., Funck! Laurer!) und an Felsen um die Mündung Teferoggen-Thale’s im nördlichen Tyrol (Hsch.), jedoch an keinem dieser Orte so schön und zahlreich, als bei der Grube Schwarzwand.”

Notes on our specimen. Rewritten label “1822 von Hoppe in der Grosarl.” We may presume that the specimen was given by Hornschuch to Hoppe for distribution. According to the description, the material was distributed as *Weissia mielichhoferiana* Hoppe et Hornsch., Crypt. Exsic. Dec. II.

Mnium latifolium Schleich. ex Schwägr., Species Muscorum Frondosorum, Supplementum Primum 2: 138. 1816. (Schleich. Cat. Pl. Helv., ed. 2, 28, 1807, nom. inval., without description).

[= name in current use]

Combinations for this basionym: *Bryum schleicheri* var. *latifolium* (Schwägr.) Schimp. Synopsis Muscorum Europaeorum, Editio Secunda 1876. *Bryum turbinatum* var. *latifolium* (Schwägr.) Bruch & Schimp. Bryologia Europaea 4: 135, 1839. *Mnium punctatum* subsp. *latifolium* (Schwägr.) Hampe Flora 20: 276, 1837. *Polla latifolia* (Schwägr.) Brid. Bryologia Universa 2: 817, 1827. *Bryum latifolium* (Schwägr.) Brid. Muscologia Recentiorum Suppl. 4: 120, 1819[1818]. *Bryum schleicheri* var. *latifolium* (Schwägr.) Kindb. European and N. American Bryineae (Mosses) 2: 353, 1897.

Protologue. Lectum est a Schleicherio in Helvetia, missum e Pyrenaeis.

Notes on our specimen. Original band with the plant name.

Orthotrichum sturmii Hoppe & Hornsch., Flora 2(1): 89, 1819.

[= name in current use]

Combinations for this basionym: *Orthotrichum rupestre* var. *sturmii* (Hoppe & Hornsch.) Jur. Die Laubmoosflora von Oestreich-Ungarn 1882. *Orthotrichum rupestre* subsp. *sturmii* (Hoppe & Hornsch.) Boulay Muscinées de la France, Première Partie: Mousses 1884. *Dorcadion rupestre* var. *sturmii* (Hoppe & Hornsch.) Lindb. Musci Scandinavici 1879. *Orthotrichum cupulatum* var. *sturmii* (Hoppe & Hornsch.) Hampe Flora 20: 280, 1837.

Protologue. Auf Felsen um Heiligenblut und Mattrey.

Notes on our specimen. Rewritten label, “1822 durch Hoppe auf Felsen an der Pasterze.”

Polytrichum affine Funck, Botanische Zeitung 1: 121, 1802.

[= *Polytrichum strictum* Menzies ex Brid. 1801, *Polytrichum swartzii* Hartm. 1849]

Combinations for this basionym: *Polytrichum juniperinum* var. *strictum* (Menzies ex Brid.) Röhl. Deutschlands Flora. Ed. 2., Kryptogamische Gewächse 3: 58, 1813. *Polytrichum juniperinum* subsp. *strictum* (Menzies ex Brid.) W. Nyl. & Saelan Herbarium Musei Fennici 1859.

Protologue. Gesellschaftlich auf Torfboden am Fichtelberge.

Notes on our specimen. Krypt. Gew. Fichtelgeb. No. 251.

Polytrichum alpestre Hoppe Botanisches Taschenbuch 1801: 198, 1801.

[= *Polytrichum swartzii* Hartm. 1849, *Polytrichum strictum* Menzies ex Brid. 1801]

Combinations for this basionym: *Polytrichum commune* var. *swartzii* (Hartm.) Nyholm Illustrated Moss Flora of Fennoscandia. II. Musci 1969. *Polytrichum commune* subsp. *swartzii* (Hartm.) C. Hartm. Handbok i Skandinaviens Flora, Nionde Upplagan 2: 43, 1864.

Protologue. An felsigen Orten auf dem Untersberge bei Salzburg.

Notes on our specimen. Rewritten label “*In monte Unterberg a Hopio lectum 1820*”. The date refers to acquisition in the collection.

Polytrichum pallidisetum Funck, Cryptogamische Gewächse des Fichtelgebirg's 3: 55, 1802.

[= *Pogonatum alpinum* var. *macounii* (Kindb.) Thér. 1902]

Combinations for this basionym: *Polytrichum formosum* var. *pallidisetum* (Funck) Steud. Nomenclator Botanicus 2: 352, 1824. *Polytrichastrum pallidisetum* (Funck) G.L. Sm. Memoirs of the New York Botanical Garden 21(3): 35, 1971. *Polytrichum attenuatum* subsp. *pallidisetum* (Funck) Kindb. European and N. American Bryineae (Mosses) 2: 163, 1897. *Polytrichum attenuatum* var. *pallidisetum* (Funck) H. Möller Arkiv för Botanik utgivet av K. Svenska Vetenskapsakademien 17(4): 40, 1922.

Protologue. Not seen.

Notes on our specimen. Krypt. Gew. Fichtelgeb. No. 55.

Splachnum braunianum Opiz, Naturalientausch 6: 38, 1824.

Notes on our specimen. Handwritten label, probably by the owner of the collection with rewritten text of protologue “*Splachnum braunianum Opitz Caule stupposo, caespitoso; foliis ovatis mucronatis; concavis; apophysi oblongo ovali, latiore quam theca. Vide gedrucktes Verzeichniss pag. 38.*”

Protologue. Without locality.

Splachnum helveticum Schleich. ex Schultz Sylloge Plantarum Novarum 2: 128, 1828, (Schleich. Cat. Pl. Helv. 28, 1807, nom. inval., without description).

[= *Splachnum serratum* var. *flagellare* (Brid.) Röhl. Deutschlands Flora. Ed.2., Kryptogamische Gewächse 3: 43, 1814.]

Protologue. Without locality.

Notes on our specimen. Original handwritten label “*Splachnum helveticum S nunc serratum Hedw.*”

Tetraphis ovata Funck Botanisches Taschenbuch 1802: 41, 1802.

[= combination in current use *Tetrodontium brownianum* var. *ovatum* (Funck) Wijk & Margad. Taxon 9: 52. 1960]

Combinations for this basionym: *Georgia browniana* var. *ovata* (Funck) I. Hagen Det K. Norske Videnskabers Selskabs Skrifter 1908(9): 24, 1909. *Georgia brownii* var. *ovata* (Funck) Lindb. Notiser ur Sällskapet pro Fauna et Flora Fennica Förhandlingar 9: 153, 1868. *Tetraphis browniana* var. *ovata* (Funck) Hampe Flora 20: 280, 1837. *Tetrodontium ovatum* (Funck) Schwägr. Species Muscorum Frondosorum, Supplementum Secundum 1(2): 102, 1824.

Protologue. Not seen.

Notes on our specimen. Krypt. Gew. Fichtelgeb. No. 83.

Tetraphis repanda Funck in Sturm, Deutschlands Flora, Abtheilung II, Cryptogamie 17: [4] ic., 1819.

[= combination in current use *Tetrodontium repandum* (Funck) Schwägr. Species Muscorum Frondosorum, Supplementum Secundum 1(2): 102. 1824.]

Combinations for this basionym: *Tetrodontium ovatum* var. *repandum* (Funck) Martensson Kungliga Svenska Vetenskapsakademiens Avhandlingar i Naturskyddsärenden 14: 137, 1956. *Georgia repanda* (Funck) Müll. Hal. Synopsis Muscorum Frondosorum omnium hucusque Cognitorum 1: 181, 1848. *Georgia brownii* var. *repanda* (Funck) Lindb. Notiser ur Sällskapet pro Fauna et Flora Fennica Förhandlingar 9: 153, 1868. *Tetraphis ovata* var. *repanda* (Funck) Hampe Linnaea 11: 80, 1837. *Tetraphis browniana* var. *repanda* (Funck) Hampe Flora 20: 280, 1837. *Tetrodontium brownianum* subsp. *repandum* (Funck) Boulay Muscinées de la France, Première Partie: Mousses 1884. *Tetrodontium brownianum* var. *repandum* (Funck) Limpr. Kryptogamen-Flora von Schlesien 1: 110, 1876.

Protologue. Without locality.

Notes on our specimen. Krypt. Gew. Fichtelgeb. No. 587.

Tortula brevicaulis Schleich., Cat. Pl. Helv., ed. 2, 30, 1807, nom. inval., without description.

Notes on our specimen. Without notes. Origin in Schleicher's exsiccate may be assumed.

Tortula curvata Schleich., Cat. Pl. Helv., ed. 2, 30, 1807, nom. inval., without description.

Notes on our specimen. Rewritten label "Von Schleicher als *Tortula curvata* aus der Schweiz Vide Web. Mohr. P. 206."

Remarks. Weber et Mohr (1807) identify the specimen "*Tort. curvata* Schleich. Cent. 3. n. 24. in *glareosis Rhodani lecta*" with *Tortula inclinata* Hedw.

Tortula gracilis Schleich. ex Hook. & Grev., Edinburgh Journal of Science 1: 300, 1824. (*Tortula gracilis* Schleich. Cat. Pl. Helv., ed. 2, 30, 1807, nom. inval., without description). Name based on adoption of earlier epithet.

Replacement name: *Barbula gracilis* Schwägr. Species Muscorum Frondosorum, Supplementum Primum 1: 125, 34. 1811. nom. illeg., later homonym of *Barbula gracilis* Schumach. Enumeratio Plantarum in Partibus Saellandiae Septentrionalis et Orietalis 2: 43, 1803.

Combinations for this basionym: *Didymodon rigidulus* var. *gracilis* (Schleich. ex Hook. & Grev.) R. H. Zander Cryptogamie: Bryologie, Lichénologie 2: 393, 1981. *Barbula fallax* var. *gracilis* (Schleich. ex Hook. & Grev.) Hampe Flora 20: 287, 1837.

Notes on our specimen. Rewritten label “*Von Schleicher aus der Schweiz als Tortula gracilis*”, original handwritten label with the name *Tortula gracilis*.

Tortula obtusifolia Schleich., Cat. Pl. Helv., ed. 2, 31, 1807, nom. inval., without description.

Notes on our specimen. Rewritten label “*Aus der Schweiz von Schleicher als Tortula obtusifolia*.”

Trichostomum affine Schleich. ex F. Weber & D. Mohr, Botanisches Taschenbuch 127, 1807. (Schleich. Cat. Pl. Helv., ed. 2, 31, 1807, nom. inval., without description). Combination in current use *Bucklandiella affinis* (Schleich. ex F. Weber & D. Mohr) Bednarek-Ochyra & Ochyra Biodiversity of Poland 3: 144. 2003.

Combinations for this basionym: *Grimmia affinis* (Schleich. ex F. Weber & D. Mohr) Lindb. Musci Scandinavici 1879. *Grimmia heterosticha* subsp. *affinis* (Schleich. ex F. Weber & D. Mohr) Kindb. Bihang till Kongliga Svenska Vetenskaps-Akademiens Handlingar 7(9): 114, 1883. *Racomitrium affine* (Schleich. ex F. Weber & D. Mohr) Lindb. Acta Societatis Scientiarum Fennicae 10: 552, 1875. *Racomitrium heterostichum* subsp. *affine* (Schleich. ex F. Weber & D. Mohr) J. J. Amann Flore des Mousses de la Suisse 2: 143, 1918. *Racomitrium heterostichum* var. *affine* (Schleich. ex F. Weber & D. Mohr) Lesq. Mémoires de la Société des Sciences Naturelles de Neuchâtel 3(3): 28, 1846.

Protologue. Without locality.

Notes on our specimen. Schleicher, without further data.

Remarks. The Schleicher exsiccate “*Cent. 4, no 18*” is cited in the description.

Trichostomum canescens* β *gracile Schleich., Cat. Pl. Helv., ed. 2, 31, 1807, nom. inval., without description.

Notes on our specimen. Schleicher, without further data.

Trichostomum sudeticum Funck, Deutschlands Moose 26, 1820. Combination in current use *Bucklandiella sudetica* (Funck) Ochyra & Bednarek-Ochyra Biodiversity of Poland 3: 147, 2003.

Combinations for this basionym: *Racomitrium sudeticum* (Funck) Bruch & Schimp. Bryologia Europaea 3: 141, 1845. *Campylopus sudeticus* (Funck) Fürnr. Flora 12: 595, 1829. *Racomitrium microcarpum* var. *sudeticum* (Funck) Hueb. Muscologia Germanica 1833. *Dryptodon sudeticus* (Funck) Brid. Bryologia Universa 1: 195, 1826. *Racomitrium heterostichum* subsp. *sudeticum* (Funck) Dixon. The Student's Handbook of British Mosses 1896. *Racomitrium heterostichum* var. *sudeticum* (Funck) E. Bauer Musci Europaei et Americani Exsiccati 43: n. 2019, 1931.

Protologue. Ad saxa in sudetis (am Weisswasser im Teufelsgrund).

Notes on our specimen. Krypt. Gew. Fichtelgeb. No. 570.

Weissia martiana Hoppe & Hornsch., Musci Exotici 2: tab. 104, 1819. Combination in current use *Oreas martiana* (Hoppe & Hornsch.) Brid. Bryologia Universa 1: 383, 1826.

Combinations for this basionym: *Oncophorus martianus* (Hoppe & Hornsch.) Lindb. Index Bryologicus 1897. *Catoscopium martianum* (Hoppe & Hornsch.) Hueb. Muscologia Germanica 1833.

Protologue. In alpinis Tyrolensibus. D. Hornschuch.

Notes on our specimen. Rewritten label “*Durch Hoppe in Windisch Mattreyer Alpen*”. Today Windisch-Matrei is in East Tirol.

Weissia mielichhoferiana Funck, Cryptogamische Gewächse des Fichtelgebirg's 24: 2, 1817 [1818]. Combination in current use *Mielichhoferia mielichhoferiana* (Funck) Loeske Studien zur Vergleichenden Morphologie und Phylogenetischen Systematik der Laubmoose 1910.

Combinations for this basionym: *Apiocarpa mielichhoferi* (Funck) Hueb. Muscologia Germanica 155, 1833.

Protologue. Locality for number 490 “*Von Herr Mielichhofer in der Grosarl im Salzburgischen entdeckt. Mitgetheilt von Herr Hornschuch*”.

Notes on our specimen. Krypt. Gew. Fichtelgeb. No. 490.

Voitia nivalis Hornsch., De Voitia et Systylio novis Muscorum Frondosorum Generibus 10, 1818.

Protologue. Habitat in summo monte Glockner Carinthiae superioris, loco Salmshöhe dicto, porro in supremo cacumine jugi alpini Pasterze superioris ad limites extremos nivis

K. SUTORÝ

aeternae, ubi in societate Splachni urceolati ... obtegit. One year later gives HORNSCHUCH (1819) the second locality more precise "...vor der Salmshöhe am Glockner sehr selten, auf der diesseitigen Pasterze gegen die Salzburger Gränze, wo der Tauernbach herabfließt, sparsam".

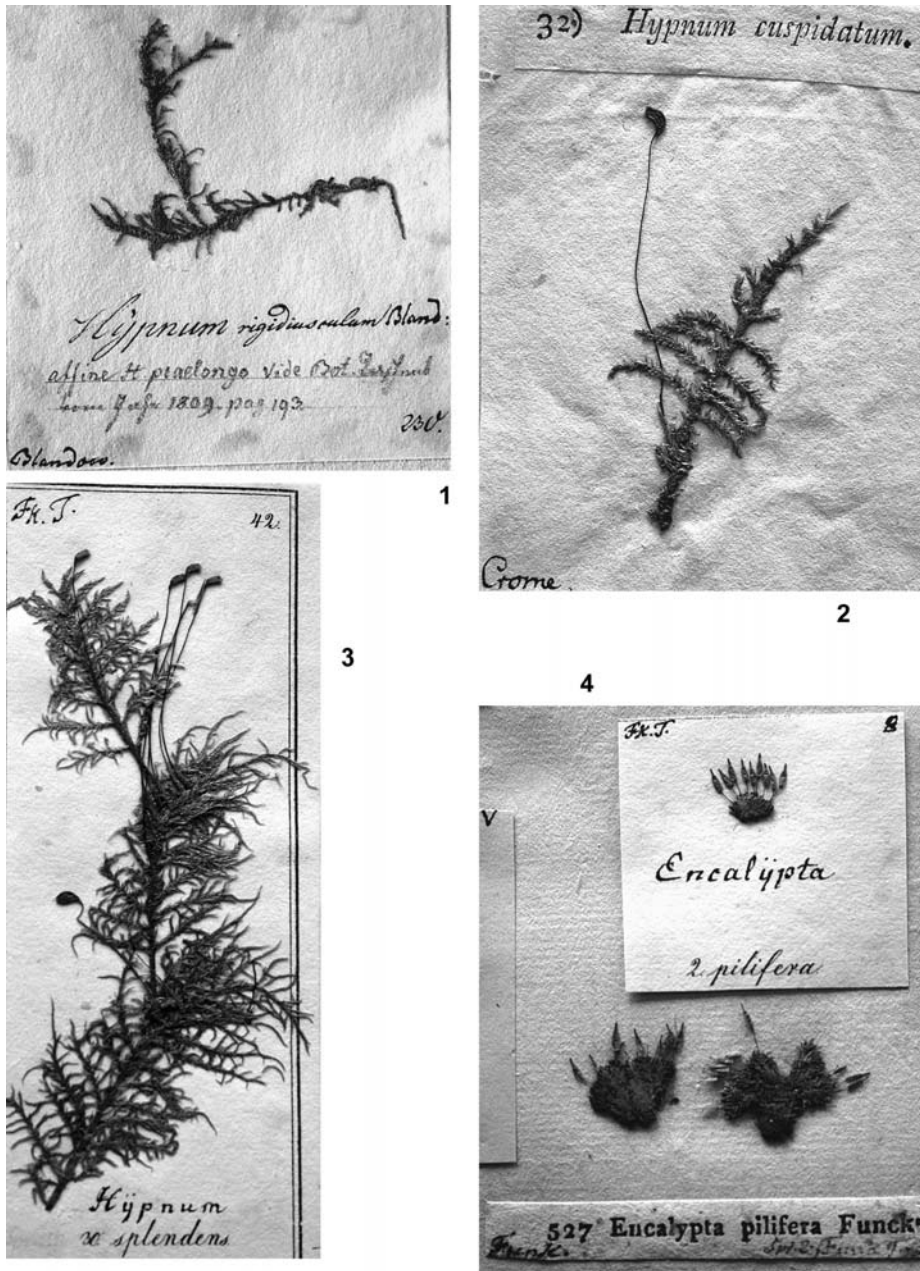
Notes on our specimen. Both specimens sent by Hoppe to the collection under study are cited in the protologue "*Aus der Pasterze b. H. Blut*" and "*in Alpe Glockner (40-211)*."

Acknowledgements

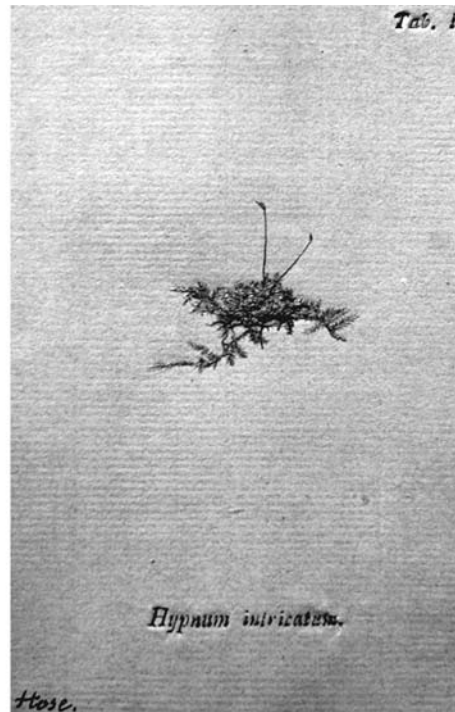
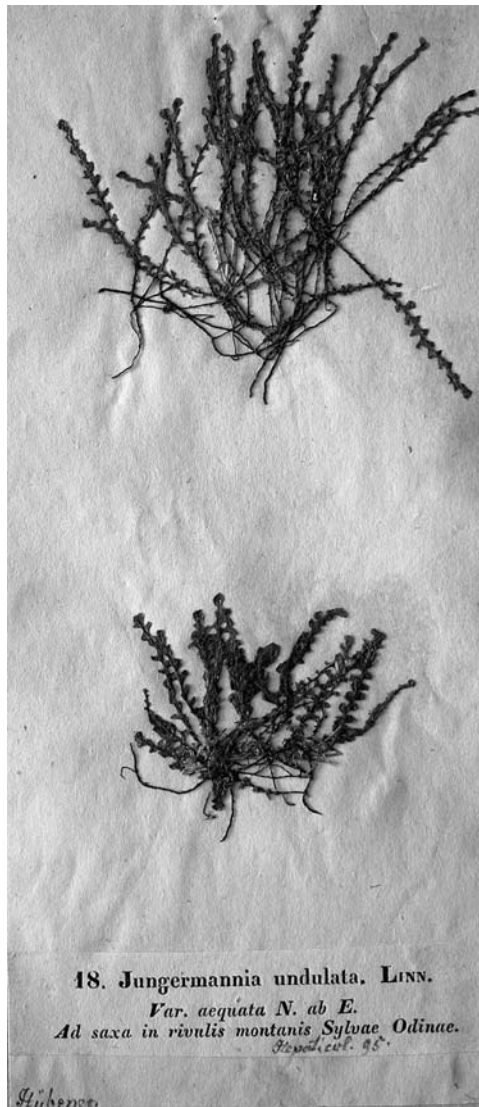
The Grant Agency of the Czech Republic (GAČR 206/040/995) and long-term research grant MK00009486201 supported the work of the author on this contribution. My thanks are due to Prof. RNDr. Jiří Váňa, DrSc. for his kind help and for filling in some missing data.

References

- HORNSCHUCH F. 1819: Neue Laubmose. *Flora* **2**: 81–96.
SUTORÝ K. 2009: Material of type character in the Münch-Bellinghausen collection in the Moravian Museum, Brno (BRNM) 7. Philipp Gottfried Gaertner, Bernhard Meyer, Johannes Scherbius. *Acta Musei Moraviae, Scientiae biologicae* **93**: 169–184.
Tropicos.org. Missouri Botanical Garden. <http://www.tropicos.org>. (accessed 16 Feb 2009).



Figs 1–4. 1 – O. C. Blandow’s exsiccate series *Musci frondosi exsiccati*; 2 – G. E. W. Crome’s exsiccate series *Sammlung deutscher Laubmose*; 3 – H. C. Funck’s exsiccate series *Deutschlands Moose*. Figure shows the specimen from the right upper corner of the page; 4 – both H. C. Funck’s exsiccate series *Deutschlands Moose* and *Kryptogamische Gewächse (besonders) des Fichtelgebirg’s*. The figure shows the first older in upper part and the second, younger in the bottom part.



6

Figs 5–6. 5 – J. W. P. Hübener's exsiccate series *Deutschlands Lebermose*; 6 – J. A. Hose's exsiccate series *Herbarium vivum muscorum frondosorum cum descriptionibus analiticis ad normam Hedwigii*.

Appendix 1

O. C. Blandow: Musci frondosi exsiccati. Exciccate numbers preserved in the Münch-Bellinghausen collection.

1	62	113	182
3	63	114	183
4	64	116	184
5	65	117	185
6	66	118	188
8	68	119	189
9	69	122	191
12	71	124	198
13	72	126	200
16	73	127	201
17	74	130	202
19	76	134	203
20	77	135	204
21	78	137	206
22	80	138	207
28	85	141	211
29	86	142	212
31	87	143	213
33	88	145	215
34	89	148	217
35	92	149	218
36	93	150	219
39	94	151	220
40	95	152	221
41	97	156	222
43	99	158	224
44	101	160	225
46	103	161	226
47	104	162	229
49	105	164	230
50	105	166	232
51	106	167	233
52	107	169	
54	108	171	
55	109	174	
56	110	178	
60	111	179	
61	112	180	

Appendix 2

G. E. W. Crome: Sammlung deutscher Laubmose. Exsiccate numbers preserved in the Münch-Bellinghausem collection.

4	24	36	57
6	25	41	58
9	26	42	59
10	27	43	60
15	28	47	
16	29	50	
17	30	51	
18	32	52	
19	33	53	
21	34	55	
22	35	56	

Appendix 3

H. C. Funck: Deutschlands Moose. Exsiccate numbers preserved in the Münch-Bellinghausem collection.

01 – 6, 10	18 – 14	32 – 2, 7, 9	51 – 75
02 – 5	19 – 5	33 – 1, 14	53 – 82
04 – 4	20 – 13	35 – 3, 5	55 – 6
05 – 5	21 – 23, 24	38 – 5, 7	57 – 12, 14, 16, 18
06 – 1	22 – 3, 4, 33	39 – 12	
08 – 1, 2	23 – 2, 5, 6, 9, 12	40 – 21, 26	
09 – 4	24 – 1, 5, 7	42 – 30	
12 – 13, 18	25 – 7, 9	43 – 36	
14 – 1	26 – 10	44 – 40	
15 – 4, 7, 8, 10, 11	27 – 1, 2, 4	47 – 57	
16 – 3	28 – 1, 2, 4	48 – 61, 62	
17 – 9, 10, 11	29 – 5, 6, 7	49 – 65	

Appendix 4

H. C. Funck: Kryptogamische Gewächse (besonders) des Fichtelgebirg's. Exsiccate numbers preserved in the Münch-Bellinghausem collection. (continued)

4	66	152	250
5	67	153	251
6	68	154	252
7	69	155	253
8	81	156	254
9	82	157	256
10	83	158	267
11	84	159	267
13	85	163	268
14	86	172	269
15	87	173	270
16	87	174	271
28	89	175	272
29	90	177	288
30	92	187	289
32	94	188	290
33	103	189	291
34	104	190	292
35	105	191	293
36	106	192	294
37	107	194	309
38	108	195	310
41	110	196	311
42	111	208	312
43	113	209	313
53	114	210	314
54	115	211	315
55	116	212	327
56	117	214	328
57	132	215	329
58	133	228	330
59	134	230	332
60	135	231	336
61	137	232	338
62	138	233	339
63	139	235	341
64	150	248	343
65	151	249	349

Appendix 4

H. C. Funck: Kryptogamische Gewächse (besonders) des Fichtelgebirg's. Exsiccate numbers preserved in the Münch-Bellinghausem collection.

350	469	575	748
351	470	587	749
352	471	590	750
353	472	591	751
355	473	607	753
356	487	608	757
357	488	609	765
366	489	611	766
368	490	613	770
369	492	614	771
386	507	615	
387	508	617	
388	509	626	
389	510	627	
409	511	629	
410	513	630	
411	514	632	
413	515	633	
414	516	634	
421	517	635	
428	527	646	
430	528	648	
431	529	652	
432	531	654	
433	532	656	
435	534	667	
436	535	668	
437	548	670	
447	550	689	
448	551	692	
450	552	693	
451	553	707	
452	554	709	
453	555	727	
455	568	728	
456	569	729	
467	570	730	
468	571	732	