
Navigation Software

**Latest Map Guarantee
(free update when buying a
receiver)**

Update Procedure

June 2019

AUDIOVOX®

For new devices, you can update the maps free of charge within a period of 30 days after receiving the GPS signal the first time. A free update is only available when you buy a new car receiver, not when you buy replacement navigation maps through our service.

Please follow these steps:

1. Start your navigation system and accept the EULA.

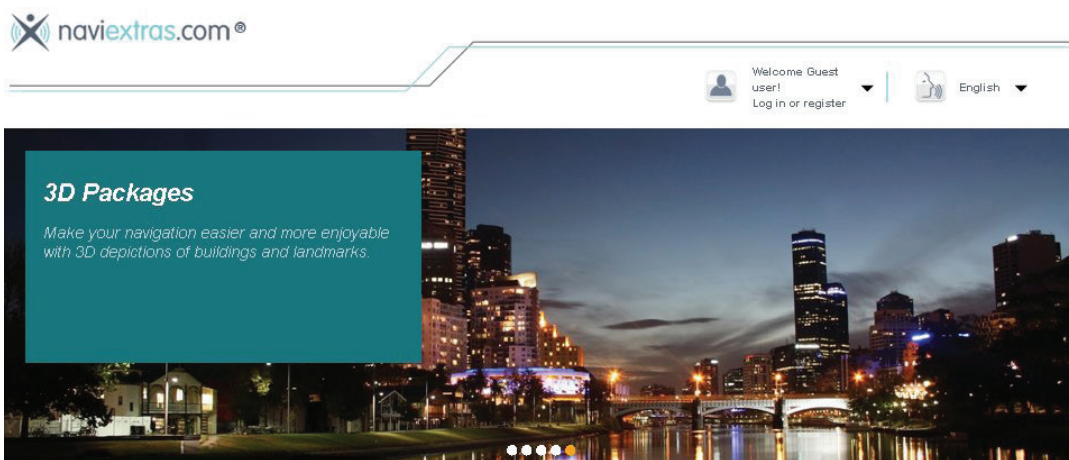


- Select the language and speaker used for voice guidance messages.
- Confirm the time format and unit settings.
- Later you can change them in Regional settings.
- Wait until you receive the first GPS Signal and turn off the navigation or the receiver.

2. Register at the website

Go to the website www.naviextras.com, create your own LOGIN, register at the website.

Press the option **Welcome Guest user !, Log in or register** and then press the tab **Register**.



Enter the brand name **Audiovox** and confirm the brand name.

Select your device from the Audiovox device list, press **CONTINUE** to proceed with the registration.

naviextras.com®

Welcome Guest user! Log in or register | English

UPDATES AND EXTRAS FOR YOUR

AUDIOVOX MORE DEVICES ►
VME 9725 NAV DETAILS ►

You have successfully selected your device!
Your selected device is always visible in the top-left corner. Please note, that all your purchase will be bound to it!

Maps & more ►
Redeem code or activate ►
Support, customer care ►

CONTINUE ►

3. Create your Account

Enter your data and press **CREATE MY ACCOUNT**.

Save your Username and Password to create the login for the Toolbox software later.

naviextras.com®

Welcome Guest user! Log in or register | English

UPDATES AND EXTRAS FOR YOUR

AUDIOVOX MORE DEVICES ►
VME 9725 NAV DETAILS ►

Maps & more ►
Redeem code or activate ►
Support, customer care ►

news

Map of Europe 2013 Q1
Providing 9633 more kms than the previous version!
15 August 2013

Map of USA 2013 Q1
Providing 19932 more kms than the previous version!
17 Jan 2013

Map of Brazil 2013 Q2
Providing 30248 more kms than the previous version!

Registration

Title

First name *

Last name *

Username *

E-mail *

Password *

Confirm password *

Country * Germany

Preferred site language * English

Subscribe to newsletter

NEWS [Try a different image](#)

Enter the verification code *

By proceeding, you accept the Site Usage & Privacy Terms.

* REQUIRED FIELD

CREATE MY ACCOUNT ►

4. Download the Naviextras Toolbox software

See **HAVE QUESTIONS OR NEED HELP?** on the right side of the website www.naviextras.com and press **DOWNLOAD PC TOOL**.



The screenshot shows the Naviextras.com website interface. At the top left is the logo and the text "naviextras.com®". On the right, there is a user greeting: "Welcome Guest user! Log in or register". Below the header, there are two main sections: "UPDATES AND EXTRAS FOR YOUR" and "DOWNLOADS".

In the "UPDATES AND EXTRAS FOR YOUR" section, there are links for "AUDIOVOX" and "VME 9725 NAV", with sub-links for "MORE DEVICES" and "DETAILS". Below these are three icons with arrows: "Maps & more", "Redeem code or activate", and "Support, customer care".

The "DOWNLOADS" section features a 3D rendering of the "Naviextras Toolbox" software box. To the right of the box, the text reads: "Naviextras Toolbox 3.18.0". Below this, it lists "Supported platforms:" followed by a bulleted list: "Windows XP", "Windows 7", and "Windows 8". A note states: "Please note that Toolbox requires a minimum display resolution of 1024x768." A text box below explains: "Naviextras Toolbox is a Windows utility designed to connect your navigation device or GPS-capable PDA with your PC. It enables you to see all available updates, download the necessary files from the internet and upload updates and new content to your navigation device." Another text box below that says: "It can also be used to create and restore backups, and to move or copy contents between the PC and the navigation device." At the bottom right of the download section is a prominent orange "DOWNLOAD" button with a right-pointing arrow.

5. Press **DOWNLOAD** to start the download of the Toolbox.

6. Install the Toolbox on your PC.

7. **NAV102/AV103/NAV104:**

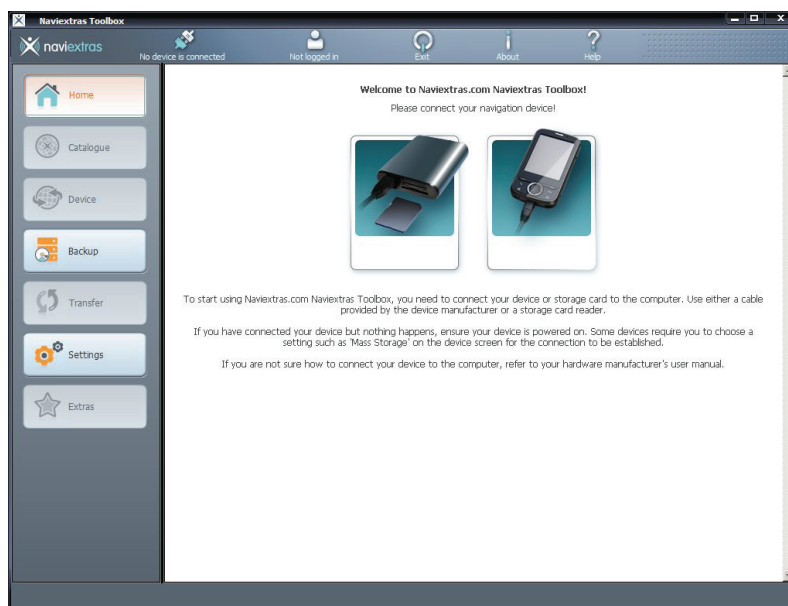
Insert the SD card into a USB/SD card adaptor.

VME 9520 NAV / VME 9725 NAV / VME 9125 NAV / VXE 6020 NAV / VMO 5020 V:

Insert the micro SD card into a USB/micro SD card adaptor

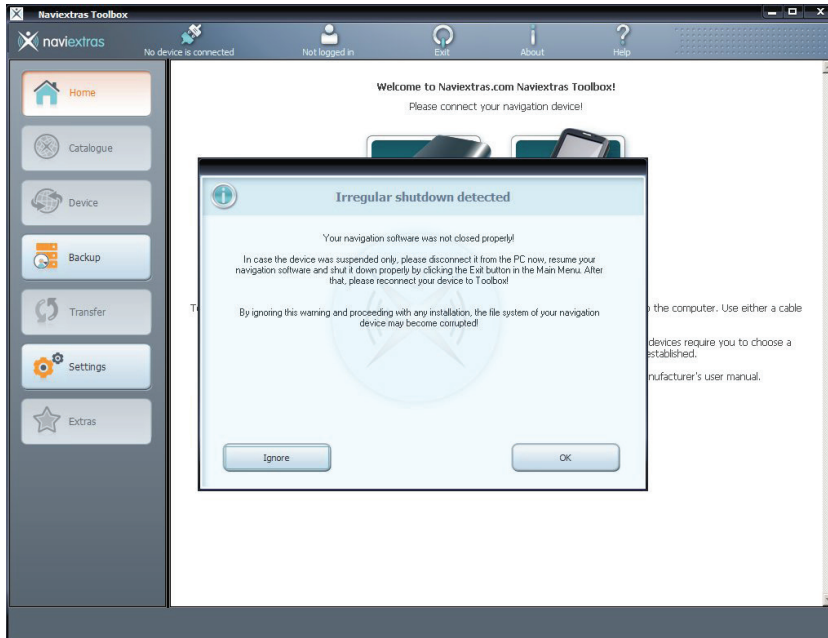
Connect the navigation card to the computer via the USB adaptor.

8. The toolbox will read the content of the card and verify the content and recognize the software on your SD/micro SD card. You will see the name of the navigation device on the Toolbox main menu on the left upper and lower side.

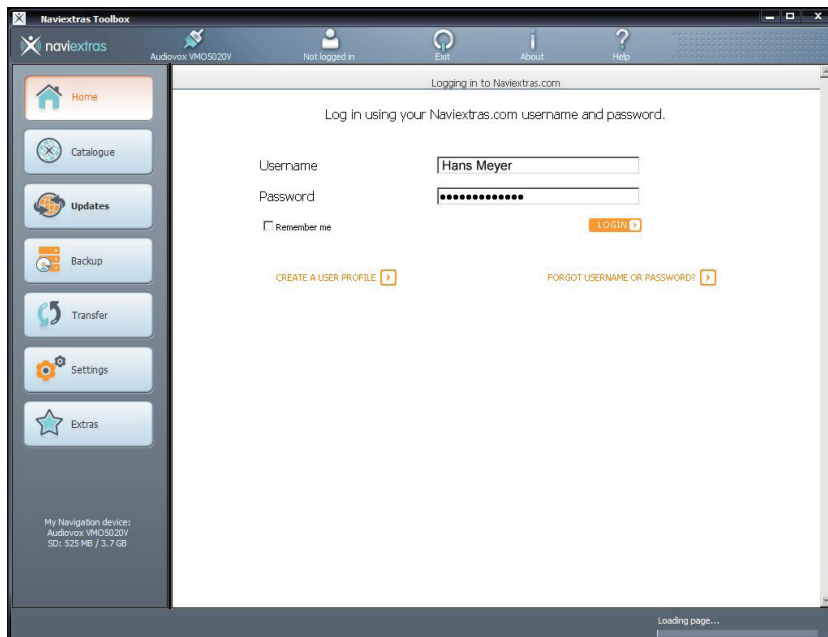


9. Error message Irregular shutdown detected

The message screen below appears if the navigation software has not been finalized. For the receivers like the VME 9520 NAV, VME 9725 NAV, VMO 5020 V and the navigation box NAV104 it is not possible to shutdown the navigation software. In this case you have to press **IGNORE** to proceed with the update of the navigation software.



10. Login: enter your username and your password, confirm the data by pressing the **LOGIN** button.



11. The Toolbox will ask you to make a backup of your navigation software, press **Backup now!** and give the backup a name.



IMPORTANT NOTE:

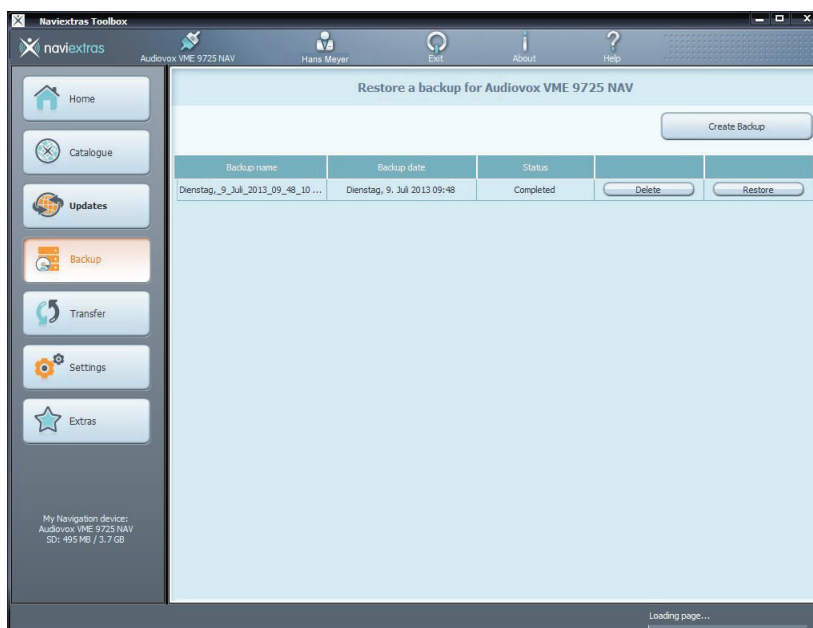
It is highly recommend to make a **BACKUP** of the SD card / Micro SD card **BEFORE** you download new maps !

Wait until the backup is completed.

Audiovox Audio Produkte GmbH does not accept any liability for an erroneous update and as a consequence a damage of the SD card / micro SD card.

12. Backup is completed

The following screen appears when the backup is completed:

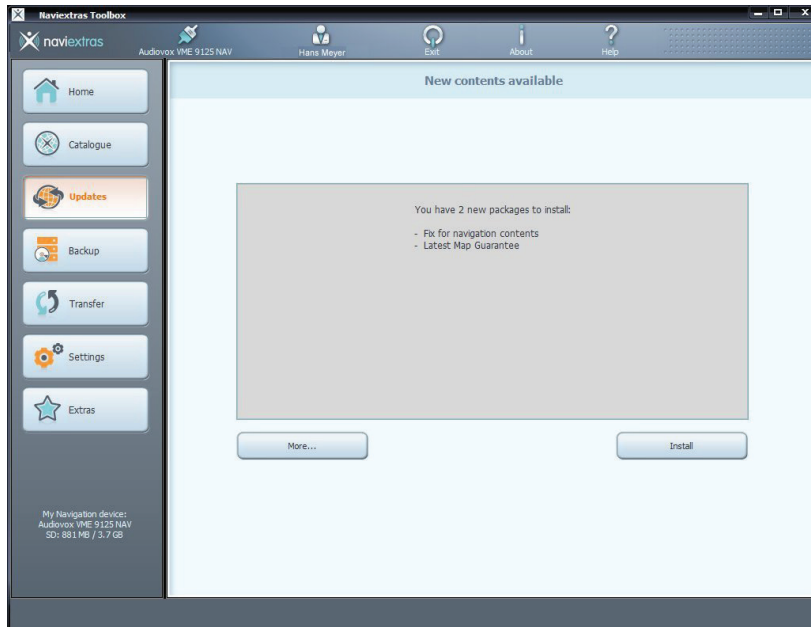


13. Updating the maps

A) AUTOMATIC UPDATE (recommended)

Select **UPDATES** with the NAVIEXTRAS TOOLBOX.

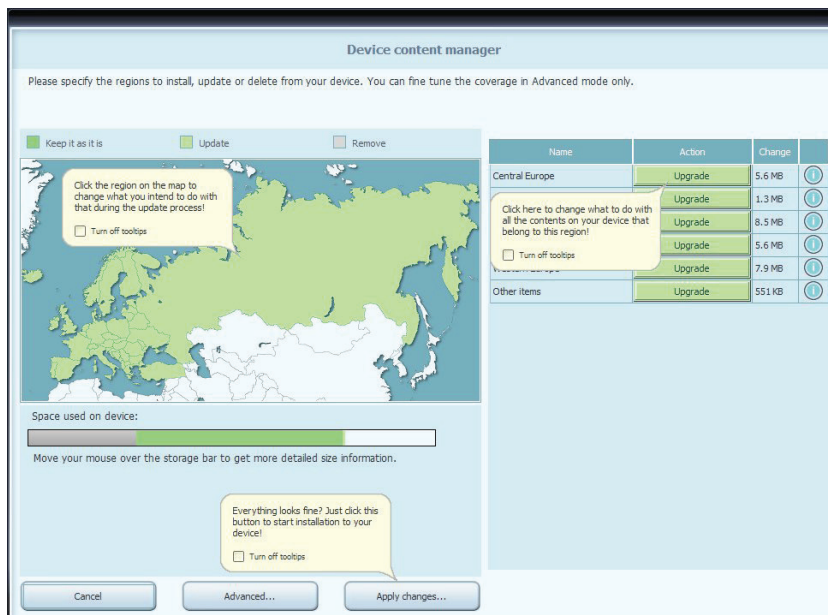
Press **Install** for an automatic update.



B) MANUAL SELECTION OF THE UPDATES

To check the available updates, press **MORE** instead of **INSTALL**.

You will see a world map with the available updates.



14. Select the desired updates/countries with a check mark and select Apply changes.
The toolbox will start to download the updated maps etc. that you marked before and save it on the SD card.

15. Press the **Exit** icon of the toolbox to exit the toolbox.

For further information concerning the LMG and the software update visit the website www.naviextras.com.

“HAVE QUESTIONS OR NEED HELP?”

“Support Topic Highlights”

- “HOW TO UPDATE?” GUIDE
- IS MY DEVICE TYPE SUPPORTED?
- DOWNLOAD PC TOOL
- TECHNICAL SUPPORT