

Body Composition Monitors and Bathroom Scales Range



Contents

Page

Tanita Introduction	02 - 05
Body Composition Monitors	06 - 17
Wireless Data Transfer Monitors	18 - 19
Precision Digital Bathroom Scales	20 - 25
Precision Analog /Dial Bathroom Scales	26 - 27

Tanita A Unique Heritage

Founded in 1946, the TANITA Corporation's first significant stride forward was achieved when it became the first scale company in Japan to introduce modern Western manufacturing methods.

Dedication to research and technology led the company to produce many innovative products that have become everyday household items such as digital and solar powered bathroom scales.

The successful introduction of the world's first body composition scale in 1992 resulted in the company's dramatic international expansion and development into the healthcare market.

TANITA is now a worldwide leading brand in body composition monitors/scales and is determined to further establish new categories through research and innovation within the health, medical and fitness sectors.

Recommended By Doctors

Tanita's professional medical technology is used and endorsed by medical professionals around the world.

Tanita is the only company to offer home use products that incorporate sound independent medical research spanning 20 years and incorporating over 100,000 people in its studies, ensuring Tanita's readings are the most accurate on the market.

Our internationally respected Medical Advisory Board ensure that all products and marketing communications are ethically and scientifically correct, giving you total peace of mind.



How Do Tanita Body Composition Monitors Work?

Bio-Electrical Impedance Analysis (BIA) - how it works:

A low, safe signal is sent through the body via metal footplates on the scale platform, and in segmental analysers, these metal plates are also found in the handgrips.

Based on the principle that muscle tissue contains high levels of water it acts as a conductor for the signal. Fat contains little water and acts as a resistor to the flow of the signal.

This resistance or 'impedance' is set against gender / height / age and is used to calculate personalised body fat and composition readings.



Why Tanita monitors are proven to be the most accurate

Size and number of the footplates

Four footplates are required to ensure maximum accuracy of body fat readings.



2 FOOTPLATE MONITORS = BMI EQUATIONS USED TO CALCULATE READINGS NOT BIA TECHNOLOGY

Quality of equations

Used to calculate personalised body fat/composition readings. The larger the sample size and techniques used for research the more accurate the equations will be. Tanita for example has used over 100,000 people worldwide to ensure maximum accuracy of readings.

Weighing accuracy

Essential for consistent readings over time. This depends on the robustness of the weighing mechanism and platform.

Body Composition Features



Adults Body Fat Ranges

Body fat % is the amount of fat as a proportion of body weight. Body fat is vital to basic bodily functions such as regulating body temperature, storing vitamins and cushioning joints. Yet, too much fat can damage your health.

The indicator shows if the amount of body fat falls within the underfat, healthy, overfat or obese categories.



Body Water %

Total body water is the weight of water in your body. Total Body Water Percentage (TBW%) is the total amount of fluid in the body expressed as a percentage of total weight. Being well hydrated will help concentration levels, sports performance and general well-being.



Bone Mass

It is useful to monitor and to check bone mass is the weight of bone mineral in your body. Check for significant changes over time.



Muscle Mass

The weight of muscle in your body. Muscles play an important role because they act as the body's engine in consuming energy (calories). As you exercise more, your muscle mass increases, which in turn burns more calories.



Basal Metabolic Rate

Basal Metabolic Rate (BMR) is the daily minimum level of energy or calories needed at rest for your body to function effectively. A person with a high BMR can burn more calories at rest than a person with a low BMR



Physique Rating

Physique Rating is an assessment of an individual's physique expressed as a level. As activity levels are increased weight may not change but the balance of body fat and muscle may alter, which will change the user's overall physique.



Daily Calorie Intake

Daily Calorie Intake (DCI) feature automatically calculates the number of calories an individual should consume within a 24 hour period in order to maintain their current weight.

Exclusively only from Tanita

Innovation is at the heart of Tanita bringing you cutting edge technology and exclusive measurements



Data Transfer and Connectivity

Body composition measurements can automatically be sent to a computer increasing ease of use and convenience for the user. Selected Body Composition Monitors and Scales incorporate new integrated technology including ANT+™ Technology, Bluetooth® Wireless Technology and SD Card™ Storage. Now also with iPhone® and iPod® touch compatibility features integrated.



Segmental Measurements

Uses 8 electrode segmental technology to show an individuals body composition measurements for each arm, leg and trunk area. Essential for the dedicated sports person to assess the impact of their training routine on their body.



FitPLUS Feature

Shows women the optimal days to exercise in order to burn extra calories, ovulation window and days when the body naturally needs more rest



Visceral Fat Indicator

Indicates the internal fat in the abdomen that is scientifically proven to increase the risk of diabetes and hypertension.



Children's Healthy Body Fat Ranges

Based on the latest scientific research, parents with children (from the age of 5 years) can see if their body fat is within the healthy range.



Metabolic Age

The metabolic rate starts to decrease after the age of 17 years. This feature indicates what age level the user's body is currently rated at.



Invisible Footplates

Tanita holds the patent for transparent electrodes allowing simple, clean design without compromising BIA accuracy.

The Bluetooth® word mark and logos are registered trademarks owned by Bluetooth SIG, Inc. and any use of such marks by Tanita is under license. Other trademarks and trade names are those of their respective owners. SD Logo is a trademark of SD-3C, LLC.

ANT is a trademark of Garmin Ltd. or its subsidiaries and is registered in one or more countries; including the U.S. ANT+, the ANT+ logo and USB ANT Stick are trademarks of Garmin Ltd. or its subsidiaries.

iPhone, iPod, iPod classic, iPod nano, iPod shuffle, and iPod touch are trademarks of Apple Inc., registered in the U.S. and other countries. iPad is a trademark of Apple Inc.

BC 601

Segmental Body Composition Monitor with SD card connectivity



Full Features

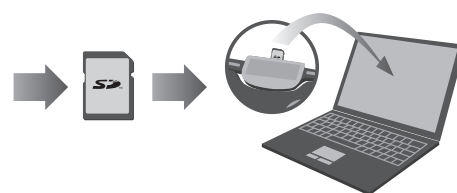
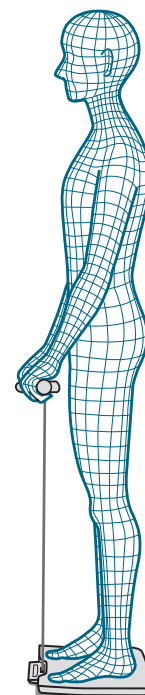
- 8 Electrode Segmental BIA Technology
- Body Fat % & Segmental Assessment
- Adult & Children's Healthy Range Indicator
- Total Body Water %
- Muscle Mass & Segmental Assessment
- Bone Mass
- Daily Calorie Intake
- Metabolic Age
- Visceral Fat Rating & Indicator
- Athlete & Guest Mode
- Weight Only Feature
- Recall Function

Key Features

- Provides segmental body composition data for each arm, leg and trunk area
- Includes an SD card to transfer all results to PC
- Free software enables user to view and manage data in Microsoft Excel format
- Hand held, pull-up console features clear LCD display, and set-up buttons

Specification

Weight Capacity:	150kg
Display Size:	23mm
Memories:	4
Product Size:	344mm x 320mm x 54mm
Product Weight:	2.3kg
Batteries:	AA/4 pcs



BC 587

Heavyweight Body Composition Monitor

Full Features

- Body Fat %
- Adult & Children's Healthy Range Indicator
- Total Body Water %
- Visceral Fat Rating & Indicator
- Muscle Mass
- Physique Rating
- Basal Metabolic Rate
- Metabolic Age Function
- Athlete & Guest Mode
- Weight Only Feature
- Recall Function

Key Features

- Body Fat % up to 75%
- Extra High Weight Capacity
- Extra Large Weighing Platform for Stability and Security
- Extra Strong Toughened Safety Glass Platform
- Extra Large Backlit LCD

Specification

Weight Capacity:	200kg
Display Size:	32mm
Memories:	4
Product Size:	300mm x 340mm x 43mm
Product Weight:	2.7kg
Batteries:	AA/4 pcs



BC 730

Compact and Lightweight Body Composition Monitor

Full Features

- Body Fat %
- Adult & Children's Healthy Range Indicator
- Total Body Water %
- Muscle Mass
- Physique Rating
- Bone Mass
- Basal Metabolic Rate
- Metabolic Age Function
- Visceral Fat Rating & Indicator
- Recall Function
- Weight Only Feature
- Athlete & Guest Mode

Key Features

- Extra Large Easy-To-Read Two Tier Display
- Extra Lightweight and Highly portable
- Super Compact

Specification

Weight Capacity:	150kg
Display Size:	21.3mm
Memories:	5
Product Size:	216mm x 260mm x 33mm
Product Weight:	0.9kg
Batteries:	AA/4 pcs



Pink Green White

FitPLUS - Introducing A Unique Feature For Women

Based on scientific research, Tanita has developed FitPLUS, an additional and totally unique feature for their body composition monitors, designed specifically for women.

FitPLUS monitors the natural metabolic changes throughout the month and correlates this with how the body responds to diet and exercise. Easy and quick to use, with a distinctive traffic light system, FitPLUS gives healthy prompts at the different phases of the menstrual cycle to maximise calorie burn and minimise fatigue:

By harnessing and understanding the natural cycle, FitPLUS gives the active woman a personal diary on her body composition monitor to maximise and maintain her health including body fat, muscle mass, hydration, visceral fat rating and other features provided by Tanita's advanced BIA technology.

Red light: Relaxation days **Amber light:** Ovulation **Green light:** Optimal active days

BC 582

Glass FitPLUS Body Composition Monitor



Full Features

Body Fat %
 Adult & Children's
 Healthy Range Indicator
 Total Body Water %
 Visceral Fat Rating &
 Indicator
 Bone Mass
 Daily Calorie Intake
 Metabolic Age
 Muscle Mass
 Physique Rating
 Athlete & Guest Mode
 Weight Only Feature
 Recall Function

Key Features

- FitPLUS Mode - Designed specifically for women who want to improve their health and fitness
- Patented Transparent Electrodes
- Children's Healthy Body Fat Range
- Visceral Fat Indicator
- Metabolic Age

Specification

Weight Capacity:	150kg
Display Size:	27mm
Memories:	5
Product Size:	320mm x 300mm x 42mm
Product Weight:	2kg
Batteries:	AA/4 pcs

BC 581

Compact FitPLUS Body Composition Monitor



Full Features

Body Fat %
 Adult & Children's
 Healthy Range Indicator
 Total Body Water %
 Visceral Fat Rating &
 Indicator
 Daily Calorie Intake
 Metabolic Age
 Muscle Mass
 Athlete & Guest Mode
 Weight Only Feature
 Recall Function

Key Features

- FitPLUS Mode - Designed specifically for women who want to improve their health and fitness
- Children's Healthy Body Fat Range
- Visceral Fat Indicator
- Metabolic Age

Specification

Weight Capacity:	150kg
Display Size:	27mm
Memories:	5
Product Size:	300mm x 300mm x 38mm
Product Weight:	1.2kg
Batteries:	AA/4 pcs

BC 351

The World's Slimmest Body Composition Monitor

Full Features

- Body Fat %
- Adult & Children's Healthy Range Indicator
- Total Body Water %
- Visceral Fat Rating & Indicator
- Bone Mass
- Basal Metabolic Rate
- Metabolic Age
- Muscle Mass
- Physique Rating
- Athlete & Guest Mode
- Recall Function

Key Features

- 50 gram Accuracy
- Children's Healthy Body Fat Ranges
- Visceral Fat Indicator
- Metabolic Age

Specification

Weight Capacity:	150kg
Display Size:	32mm
Memories:	4
Product Size:	302mm x 296mm x 15mm
Product Weight:	2.2kg
Batteries:	Lithium CR2032/2 pcs



BC 583

Low Profile Body Composition Monitor

Full Features

- Body Fat %
- Adult & Children's Healthy Range Indicator
- Total Body Water %
- Muscle Mass
- Physique Rating
- Basal Metabolic Rate
- Metabolic Age
- Visceral Fat Rating & Indicator
- Bone Mass
- Weight Only Feature
- Athlete & Guest Mode
- Recall Function

Key Features

- Adult and Children's Healthy Body Fat Range Feature
- Metabolic Age
- Visceral Fat Indicator

Specification

Weight Capacity:	150kg
Display Size:	27mm
Memories:	4
Product Size:	319mm x 329mm x 19mm
Product Weight:	1.8kg
Batteries:	Lithium CR2032/2 pcss



BC 570 Elegant Glass Body Composition Monitor



Full Features

Body Fat %
 Adult & Children's
 Healthy Range Indicator
 Total Body Water %
 Muscle Mass
 Basal Metabolic Rate
 Visceral Fat Rating
 & Indicator
 Athlete & Guest Mode
 Recall Function
 Weight Only Feature

Key Features

- Patented Transparent Electrodes
- Children's Healthy Body Fat Range
- Visceral Fat Indicator

Specification

Weight Capacity: 150kg
 Display Size: 27.2mm
 Memories: 4
 Product Size: 322mm x 322mm x 43.3mm
 Product Weight: 1.8kg
 Batteries: Lithium CR2032/2 pcs

BC 571 Glass Body Composition Monitor with Touchscreen



Full Features

Body Fat %
 Adult & Children's
 Healthy Range Indicator
 Total Body Water %
 Muscle Mass
 Physique Rating
 Bone Mineral Mass
 Daily Calorie Intake
 Visceral Fat Rating
 & Indicator
 Athlete & Guest Mode
 Recall Function
 Weight Only Feature

Key Features

- Easy to use touch screen buttons
- Patented Transparent Electrodes
- Children's Healthy Body Fat Range
- Visceral Fat Indicator

Specification

Weight Capacity: 150kg
 Display Size: 27.2mm
 Memories: 4
 Product Size: 329mm x 322mm x 42.4mm
 Product Weight: 1.9kg
 Batteries: Lithium CR2032/2 pcs

BC 575

Designer Glass Body Composition Monitor

Full Features

- Body Fat %
- Adult & Children's Healthy Range Indicator
- Visceral Fat Rating & Indicator
- Total Body Water %
- Muscle Mass
- Athlete & Guest Mode
- Recall Function
- Weight Only Feature

Key Features

- Easy to Read reverse LCD
- Patented Transparent Electrodes
- Children's Healthy Body Fat Range
- Visceral Fat Indicator

Specification

Weight Capacity:	150kg
Display Size:	27.5mm
Memories:	8
Product Size:	320mm x 300mm x 42mm
Product Weight:	2.0kg
Batteries:	AA/4 pcs



BC 543

Stylish Glass Body Composition Monitor

Full Features

- Body Fat %
- Adult & Children's Healthy Range Indicator
- Total Body Water %
- Visceral Fat Rating & Indicator
- Bone Mass
- Basal Metabolic Rate
- Metabolic Age
- Muscle Mass
- Physique Rating
- Athlete & Guest Mode
- Recall Function
- Weight Only Feature

Key Features

- Patented Transparent Electrodes
- Children's Healthy Body Fat Range
- Visceral Fat Indicator
- Metabolic Age

Specification

Weight Capacity:	150kg
Display Size:	32mm
Memories:	4
Product Size:	320mm x 300mm x 44mm
Product Weight:	2.4kg
Batteries:	AA/4 pcs



BC 541 Innerscan Family Health Body Composition Monitor



Full Features

Body Fat %
 Adult & Children's
 Healthy Range Indicator
 Total Body Water %
 Visceral Fat Rating
 & Indicator
 Bone Mass
 Basal Metabolic Rate
 Metabolic Age
 Muscle Mass
 Physique Rating
 Recall Function

Key Features

- Adult's and Children's Healthy Body Fat Range
- Visceral Fat Indicator
- Metabolic Age

Specification

Weight Capacity:	150kg
Display Size:	32mm
Memories:	4
Product Size:	302mm x 307mm x 43.2mm
Product Weight:	2.4kg
Batteries:	AA/4 pcs

BC 542 Complete Body Composition Monitor



Full Features

Body Fat %
 Adult & Children's
 Healthy Range Indicator
 Total Body Water %
 Visceral Fat Rating
 & Indicator
 Bone Mass
 Basal Metabolic Rate
 Metabolic Age
 Muscle Mass
 Physique Rating
 Recall Function

Key Features

- Total Body Water %
- Adult's and Children's Healthy Body Fat Ranges
- Basal Metabolic Rate

Specification

Weight Capacity:	150kg
Display Size:	32mm
Memories:	4
Product Size:	323mm x 300mm x 43.2mm
Product Weight:	2.4kg
Batteries:	Lithium CR2032/2 pcs

UM 040 Slimline Glass Body Fat Monitor

Full Features

Body Fat %
Adult & Children's
Healthy Range Indicator
Total Body Water %
Guest Mode
Weight Only Feature

Specification

Weight Capacity: 150kg
Display Size: 27.5mm
Memories: 4
Product Size: 304mm x 320mm x 26mm
Product Weight: 1.7kg
Batteries: AAA/4 pcs



Pearl White



Metallic Blue



Purple



Red



UM 041 Body Fat and Water Monitor with extra Large Blue Backlit LCD

Full Features

Body Fat %
Adult & Children's
Healthy Range Indicator
Total Body Water %
Guest Mode
Weight Only Feature
Recall Function

Specification

Weight Capacity: 150kg
Display Size: 46.3mm
Memories: 4
Product Size: 304mm x 320mm x 26mm
Product Weight: 1.8kg
Batteries: AAA/4 pcs



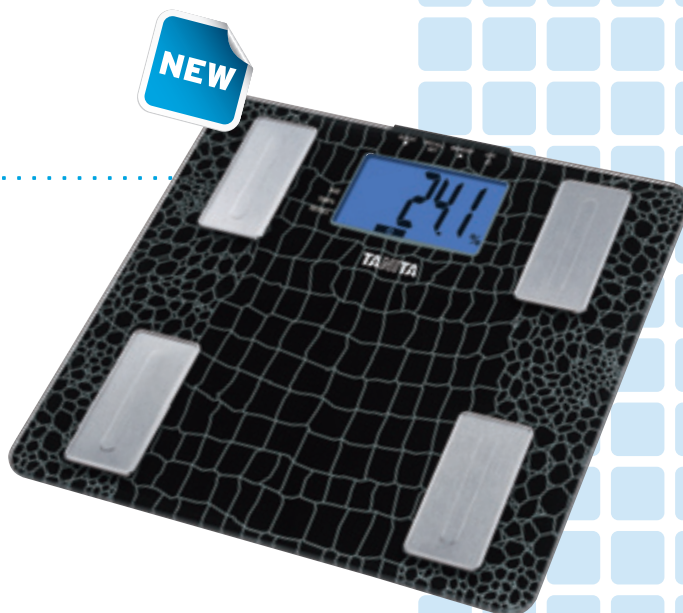
Black



Red



Metallic Black



UM 073 Compact Body Fat Monitor

Full Features

Body Fat %
Adult & Children's
Healthy Range Indicator
Total Body Water %
Muscle Mass
Recall Function
Athlete & Guest Mode
Weight Only Feature

Specification

Weight Capacity: 150kg
Display Size: 27.2mm
Memories: 4
Product Size: 292mm x 292mm x 43mm
Product Weight: 2.3kg
Batteries: AA/4 pcs



UM 075 Modern Glass Body Composition Monitor



Full Features

Body Fat %
Adult & Children's
Healthy Range Indicator
Total Body Water %
Muscle Mass
Visceral Fat Rating
& Indicator
Recall Function
Athlete & Guest Mode
Weight Only Feature

Specification

Weight Capacity: 150kg
Display Size: 27.2mm
Memories: 4
Product Size: 323mm x 310mm x 34mm
Product Weight: 2.2kg
Batteries: AA/4 pcs

UM 076 Contemporary Body Composition Monitor with Easy to Read LCD



Full Features

Body Fat %
Adult & Children's
Healthy Range Indicator
Total Body Water %
Muscle Mass
Visceral Fat Rating
& Indicator
Basal Metabolic Rate
Recall Function
Guest Mode
Weight Only Feature

Specification

Weight Capacity: 150kg
Display Size: 27.5mm
Memories: 8
Product Size: 300mm x 350mm x 38.2mm
Product Weight: 1.4kg
Batteries: AA/4 pcs

UM 070 Stylish Plastic Body Fat Monitor



Full Features

Body Fat %
Adult & Children's
Healthy Range Indicator
Total Body Water %
Guest Mode
Weight Only Feature

Specification

Weight Capacity: 150kg
Display Size: 27.5mm
Memories: 4
Product Size: 310mm x 295mm x 40.6mm
Product Weight: 2.3kg
Batteries: AA/4 pcs

UM 072

Glass Body Fat Monitor

Full Features

- Body Fat %
- Adult & Children's Healthy Range Indicator
- Total Body Water %
- Basal Metabolic Rate
- Muscle Mass
- Physique Rating
- Recall Function
- Weight Only Feature
- Guest Mode

Specification

- Weight Capacity: 150kg
- Display Size: 23.5mm
- Memories: 4
- Product Size: 340mm x 340mm x 42.5mm
- Product Weight: 2.3kg
- Batteries: AA/4 pcs



UM 050

Super Slim Lightweight Body Fat Monitor

Full Features

- Body Fat %
- Adult & Children's Healthy Range Indicator
- Total Body Water %
- Weight Only Feature
- Guest Mode
- Recall Function

Specification

- Weight Capacity: 150kg
- Display Size: 27.5mm
- Memories: 4
- Product Size: 295mm x 295mm x 34.7mm
- Product Weight: 1.2kg
- Batteries: AA/4 pcs



UM 051

Plastic Body Fat and Water Monitor

Full Features

- Body Fat %
- Adult & Children's Healthy Range Indicator
- Total Body Water %
- Weight Only Feature
- Guest Mode

Specification

- Weight Capacity: 150kg
- Display Size: 27.5mm
- Memories: 4
- Product Size: 290mm x 288mm x 43mm
- Product Weight: 2.2kg
- Batteries: AA/4 pcs



UM 052

Glass Body Fat and Water Monitor

Full Features

- Body Fat %
- Adult & Children's Healthy Range Indicator
- Total Body Water %
- Weight Only Feature
- Guest Mode
- Recall Function

Specification

- Weight Capacity: 150kg
- Display Size: 27.5mm
- Memories: 4
- Product Size: 310mm x 294mm x 41.5mm
- Product Weight: 2kg
- Batteries: AA/4 pcs



BC Series Comparison Chart

Features	BC601*	BC587	BC730	BC581	BC582	BC351	BC583
8 Electrode Segmental Analysis	x						
ANT+™ technology							
Bluetooth® Wireless Technology							
SD Card	x						
Children's body fat % & ranges	x	x	x	x	x	x	x
Adult's body fat % & ranges	x	x	x	x	x	x	x
FitPLUS Feature				x	x		
Total Body Water %	x	x	x	x	x	x	x
Muscle Mass	x	x	x	x	x	x	x
Physique Rating		x	x			x	x
Bone Mass	x		x			x	x
Basal Metabolic Rate		x	x			x	x
Daily Calorie Intake	x			x	x		
Metabolic Age	x	x	x		x	x	x
Visceral Fat Rating & Indicator	x	x	x	x	x	x	x
Athlete Mode	x		x	x	x	x	x
Recall	x		x	x	x	x	x
Weight only	x	x	x	x	x	x	x
Memories	4	4	5	5	5	4	4
Guest mode	x	x	x	x	x	x	x
Touch Screen Buttons							
50 Gram Accuracy							
UltraSlim Technology							
Technical Specification							
Weight Capacity	150kg	200kg	150kg	150kg	150kg	150kg	150kg
Material	Plastic	Glass	Plastic	Plastic	Glass	Plastic	Plastic

Features	BC570	BC571	BC575	BC543	BC541	BC542
8 Electrode Segmental Analysis						
ANT+™ technology						
Bluetooth® Wireless Technology						
SD Card						
Children's body fat % & ranges	x	x	x	x	x	x
Adult's body fat % & ranges	x	x	x	x	x	x
FitPLUS Feature				x	x	
Total Body Water %	x	x	x	x	x	x
Muscle Mass	x	x	x	x	x	x
Physique Rating		x		x	x	x
Bone Mass		x		x	x	x
Basal Metabolic Rate	x			x	x	x
Daily Calorie Intake		x		x		
Metabolic Age					x	x
Visceral Fat Rating & Indicator	x	x	x	x	x	x
Athlete Mode	x	x	x	x	x	x
Recall	x	x	x	x	x	x
Weight only	x	x	x	x	x	x
Memories	4	4	8	4	4	4
Guest mode	x	x	x	x	x	x
Touch Screen Buttons				x		
50 Gram Accuracy	x					
UltraSlim Technology	x					
Technical Specification						
Weight Capacity	150kg	150kg	150kg	150kg	150kg	150kg
Material	Glass	Glass	Glass	Glass	Plastic	Glass

* Additional features available via software

UM Series Comparison Chart

Features	UM040	UM041	UM073	UM075	UM076	UM070
Children's body fat % & ranges	x	x	x	x	x	x
Adult's body fat % & ranges	x	x	x	x	x	x
Total Body Water %	x	x	x	x	x	x
Muscle Mass				x	x	
Physique Rating						
Basal Metabolic Rate					x	
Visceral Fat Rating & Indicator				x	x	
Athlete Mode			x	x		
Recall		x		x	x	
Weight only	x	x	x	x	x	x
Memories	4	4	4	4	8	4
Guest mode	x	x	x	x	x	x
UltraSlim Technology	x	x				
Technical Specification						
Weight Capacity	150kg	150kg	150kg	150kg	150kg	150kg
Material	Glass	Glass	Plastic	Glass	Plastic	Plastic

Features	UM072	UM050	UM051	UM052
Children's body fat % & ranges	x	x	x	x
Adult's body fat % & ranges	x	x	x	x
Total Body Water %	x	x	x	x
Muscle Mass	x			
Physique Rating	x			
Basal Metabolic Rate	x			
Visceral Fat Rating & Indicator				
Athlete Mode				
Recall	x	x		x
Weight only	x	x	x	x
Memories	4	4	4	4
Guest mode	x	x	x	x
UltraSlim Technology				
Technical Specification				
Weight Capacity	150kg	150kg	150kg	150kg
Material	Glass	Plastic	Plastic	Glass

BC 1000* ANT+™ Body Composition Monitor with ANT+™ Wireless Technology



Full Features

Body Fat %
Adult & Children's
Healthy Range Indicator
Total Body Water %
Visceral Fat Rating
& Indicator
Bone Mass
Basal Metabolic Rate
Metabolic Age
Muscle Mass
Physique Rating
Athlete Mode

Key Features

- Integrated ANT+™ technology
- The only body composition monitor that can be connected to selected Garmin Fitness Watches
- Free software to track results

Specification

Weight Capacity: 200kg
Display Size: No visible display
Product Size: 340mm x 365mm x 42.6mm
Product Weight: 3kg
Batteries: AA/4 pcs

Optional Accessories

D 1000 - Tanita Tabletop Display

ANT+™ Stick

Compatible with Garmin Fitness Watches
FR 60, Forerunner 310XT, Forerunner 210
and Forerunner 610

BC 590* BT™ Body Composition Monitor with Bluetooth® Wireless Technology



Full Features

Body Fat %
Adult & Children's
Healthy Range Indicator
Total Body Water %
Visceral Fat Rating
& Indicator
Bone Mass
Basal Metabolic Rate
Metabolic Age
Muscle Mass
Physique Rating
Athlete & Guest Mode
Weight Only Feature

Key Features

- Integrated Bluetooth® Wireless Technology
- Children's Healthy Body Fat Range
- Visceral Fat Indicator
- Metabolic Age

Specification

Weight Capacity: 150kg
Display Size: 32mm
Memories: 4
Product Size: 337mm x 300mm x 36.5mm
Product Weight: 2.5kg
Batteries: AA/4 pcs

HD 500* BT®



Bluetooth® Wireless Digital Scale with iPhone & iPod touch Compatibility

Key Features

- Allows transfer of measurement information via Bluetooth® wireless technology to both iPhone and iPod touch devices instantly

Specification

Weight Capacity:	200kg
Display Size:	28mm
Product Size:	320mm x 379mm x 30mm
Product Weight:	2.7kg
Batteries:	AAA/4 pcs

Compatibility

iPod touch 1st generation 8GB 16GB 32GB/
iPod touch 2nd generation 8GB 16GB 32GB/
iPod touch 3rd generation 32GB 64GB/
iPod touch 4th generation 8GB 32GB 64GB/
iPhone 4GB 8GB 16GB/
iPhone 3G 8GB 16G/
iPhone 3GS 8GB 16G 32GB/
iPhone 4 16G 32GB



HD 351* ANT™



Tanita Scale with ANT™ Technology

Key Features

- Allowing wireless data transfer for current and previous weight readings for up to four users

Specification

Weight Capacity:	200kg
Display Size:	No visible display
Product Size:	370mm x 342mm x 35mm
Product Weight:	2.5kg
Batteries:	AA/4 pcs

Optional Accessories

ANT+™ Stick



HD 351* BT®



High Capacity Electronic Scale with Integrated Bluetooth® Wireless Technology

Key Features

- Allowing instant transfer of weight measurement to computer shows current and previous weight for up to 4 users

Specification

Weight Capacity:	200kg
Display Size:	25mm
Product Size:	370mm x 342mm x 35mm
Product Weight:	2.5kg
Batteries:	AA/4 pcs



Precision Digital Bathroom Scales

Tanita's precision bathroom scales range includes wireless, solar, digital and mechanical models. All Tanita bathroom scales are designed to the highest specification.



HD 384 Glass Digital Bathroom Scale with Extra Large Blue Backlit Display which Displays Weight Measurements in 3 Different Units Simultaneously

Specification

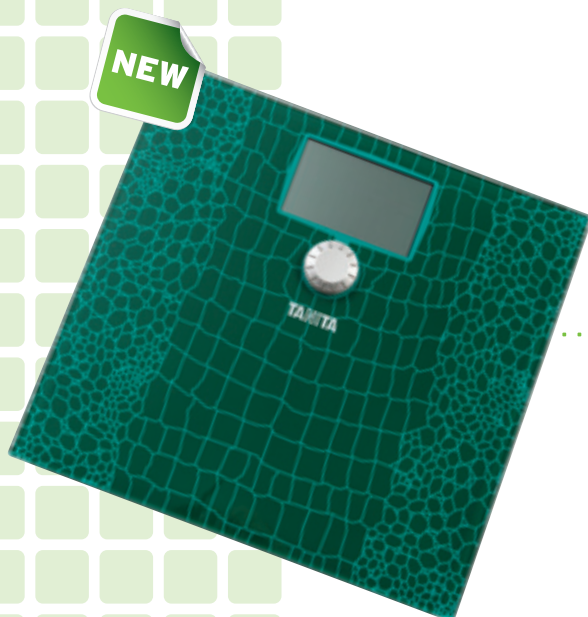
Weight Capacity:	200kg
Display Size:	17.16mm
Product Size:	320mm x 350mm x 26mm
Product Weight:	3kg
Batteries:	AAA/4 pcs



HD 387 Glass Digital Bathroom Scale with Large Reverse LCD

Specification

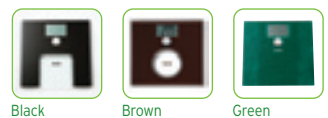
Weight Capacity:	200kg
Display Size:	52mm
Product Size:	319mm x 379mm x 28mm
Product Weight:	2.7kg
Batteries:	AAA/4 pcs



HD 383 Glass Digital Scale with Dial Activation BMI Function

Specification

Weight Capacity:	150kg
Display Size:	52mm
Product Size:	300mm x 320mm x 33.7mm
Product Weight:	2.2kg
Batteries:	AAA/2 pcs



HD 382

Ultra Slim Glass Digital Bathroom Scale with Blue Backlit Extra Large Reverse LCD Display and Tap On Activation

Specification

Weight Capacity: 150kg
 Display Size: 52mm
 Product Size: 300mm x 320mm x 24mm
 Product Weight: 1.7kg
 Batteries: AAA/2 pcs



HD 381

Ultra Slim Glass Digital Bathroom Scale with Extra Large Display and Tap on activation

Specification

Weight Capacity: 150kg
 Display Size: 52mm
 Product Size: 300mm x 320mm x 22mm
 Product Weight: 1.7kg
 Batteries: Lithium CR2032/1 pc

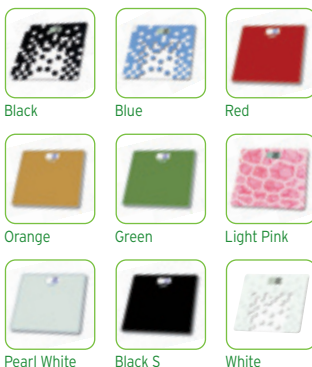


HD 380

Ultra Slim Glass Digital Bathroom Scale with Tap on activation

Specification

Weight Capacity: 150kg
 Display Size: 30mm
 Product Size: 300mm x 320mm x 22mm
 Product Weight: 1.7kg
 Batteries: Lithium CR2032/1 pc



NEW



HD 386

Lightweight Micro Scales - supplied with a carry case for increased portability

Specification

Weight Capacity: 150kg
 Display Size: 52mm
 Product Size: 135mm x 190mm x 24mm
 Product Weight: 0.5kg
 Batteries: Lithium CR2032/1 pc



NEW



HD 390

Pearl Effect Digital Scale with Extra Large Blue Backlit LCD

Specification

Weight Capacity: 150kg
 Display Size: 52mm
 Product Size: 300mm x 330mm x 32mm
 Product Weight: 1kg
 Batteries: AAA/2 pcs



NEW



HD 662

Compact Matt Finish Digital Scale with Extra Large Blue Backlit LCD

Specification

Weight Capacity: 150kg
 Display Size: 52mm
 Product Size: 288mm x 288mm x 35mm
 Product Weight: 1.1kg
 Batteries: AA/2 pcs



HD 660

Lightweight Compact Digital Scale with Step on Activation

Specification

Weight Capacity: 150kg
 Display Size: 30mm
 Product Size: 200mm x 244mm x 33mm
 Product Weight: 0.7kg
 Batteries: AA/2 pcs



HD 661

Digital Bathroom Scale with Large LCD Display

Specification

Weight Capacity: 150kg
 Display Size: 30mm
 Product Size: 280mm x 280mm x 35mm
 Product Weight: 0.99kg
 Batteries: AA/2 pcs



HD 355

Glass Digital Bathroom Scales

Specification

Weight Capacity: 150kg
 Display Size: 27.9mm
 Product Size: 313mm x 308mm x 40.5mm
 Product Weight: 1.7kg
 Batteries: AA/2 pcs





HD 357

Ultralim Lightweight Electronic Scale with in-built carry handle for easy storage

Specification

Weight Capacity:	150kg
Display Size:	32.4mm
Product Size:	313mm x 313mm x 16mm
Product Weight:	1.6kg
Batteries:	Lithium CR2032/2 pcs



HD 366

High Capacity Glass Digital Bathroom Scale with 72mm Super Size, Blue Backlit Reverse LCD

Specification

Weight Capacity:	200kg
Display Size:	61mm
Product Size:	320mm x 350mm x 26mm
Product Weight:	3kg
Batteries:	AAA/4 pcs



HD 376

High Capacity Glass Electronic Scale With Extra Large Weighing Platform and Blue Backlight Display

Specification

Weight Capacity:	200kg
Display Size:	38mm
Product Size:	331mm x 331mm x 40.4mm
Product Weight:	3.2kg
Batteries:	AA/4 pcs



HS 302

ECO Solar Solar Powered Scale

Specification

Weight Capacity:	150kg
Display Size:	24.1mm
Product Size:	306mm x 330mm x 48mm
Product Weight:	2.3kg
Batteries:	No Batteries Needed - Ever!

HD 308

Lightweight Digital Bathroom Scales with Red LED Display

Specification

Weight Capacity:	136kg
Display Size:	14.2mm
Product Size:	272mm x 285mm x 42mm
Product Weight:	1.9kg
Batteries:	AA/4 pcs



Blue



Dark Gray



Light Gray



White



HD 313

Plastic Digital Bathroom Scale with Large Comfortable Platform and Large Easy to Read Display

Specification

Weight Capacity:	150kg
Display Size:	27.7mm
Product Size:	318mm x 326mm x 53.5mm
Product Weight:	2.6kg
Batteries:	AA/4 pcs



HD 318

Digital Personal Scale with Large Weight Capacity, 25mm LCD Display and Toe-Tap Reset Button

Specification

Weight Capacity:	150kg
Display Size:	27.7mm
Product Size:	308mm x 314mm x 45mm
Product Weight:	2.2kg
Batteries:	Lithium CR2032/2 pcs



HD 325

Digital Scale with BMI Function and 4 User Memory and a Large 2-Line LCD Display

Specification

Weight Capacity:	150kg
Display Size:	25mm/14mm
Product Size:	310mm x 310mm x 47mm
Product Weight:	2.3kg
Batteries:	AA/4 pcs





Precision Analog/Dial Bathroom Scales

HA 552

Dial scale with extra large easy-to-read display

Specification
 Weight Capacity: 120kg
 Display Size: 115mm Dial
 Product Size: 240mm x 280mm x 65mm
 Product Weight: 1.6 kg



HA 650

Dial Scale with non slip surface and extra large display

Specification
 Weight Capacity: 130kg
 Display Size: 114mm Dial
 Product Size: 278mm x 292mm x 60mm
 Product Weight: 1.9kg



HA 680

Stylish Dial Scale with High Gloss Finish

Specification
 Weight Capacity: 130kg
 Display Size: 117mm Dial
 Product Size: 310mm x 298mm x 64mm
 Product Weight: 2.1kg



Yellow White Black



HA 880

Retro Style Dial Scale

Specification
 Weight Capacity: 130kg
 Display Size: 36mm Dial
 Product Size: 270mm x 272mm x 50mm
 Product Weight: 1.7kg



Yellow White Black

HA 622

Dial Weight Scale with non slip surface

Specification
 Weight Capacity: 130kg
 Display Size: 115mm Dial
 Product Size: 278mm x 292mm x 58mm
 Product Weight: 1.8kg



HA 623

Dial Weight Scale with large display

Specification
 Weight Capacity: 130kg
 Display Size: 115mm Dial
 Product Size: 300mm x 325mm x 63mm
 Product Weight: 2.2kg



HA 522

Dial scale with various children's character designs available

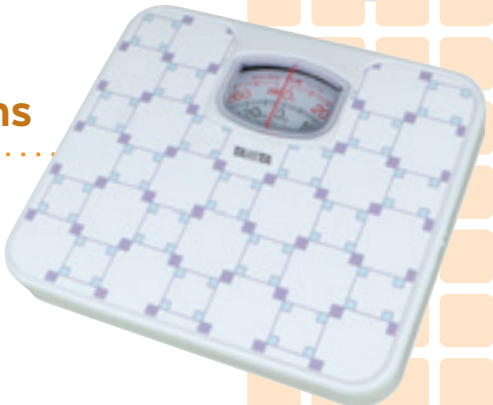
Specification
 Weight Capacity: 130kg
 Display Size: 55mm Dial
 Product Size: 245mm x 282mm x 52mm
 Product Weight: 1.6kg



HA 540

Dial Weight Scale with pastel tone design options

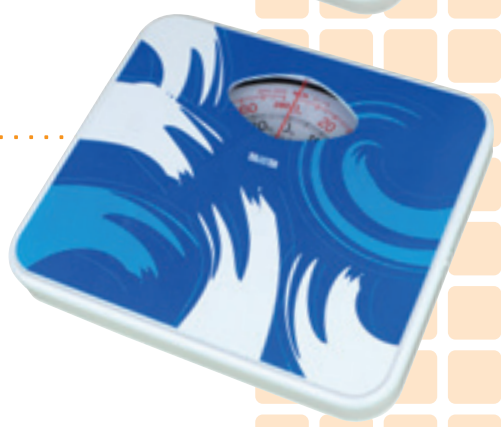
Specification
 Weight Capacity: 130kg
 Display Size: 18mm Dial
 Product Size: 242mm x 282mm x 52mm
 Product Weight: 1.6kg



HA 561

Dial Scale with Retro Design Options

Specification
 Weight Capacity: 130kg
 Display Size: 8mm Dial
 Product Size: 242mm x 282mm x 52mm
 Product Weight: 1.6kg



TANITA

Monitoring Your Health

TANITA Health Equipment H.K. Ltd
Unit 301-303, 3/F Wing on Plaza,
62 Mody Road, Tsimshatsui East,
Kowloon, Hong Kong
Tel: +852-2838-7111
Fax: +852-2838-8667
Email: asia-pacific@tanita.co.jp
Web: www.tanita.asia

TANITA Corporation
14-2, 1-Chome, Maeno-cho
Itabashi-ku, Tokyo, Japan 174-8630
Tel: +81-3-3968-7048
Fax: +81-3-3968-2661
Email: info@tanita.co.jp
Web: www.tanita.co.jp

TANITA India Private Limited
A-502, Mittal Commercial,
Off. M. V. Road (Andheri Kurla Road),
Marol, Andheri - East,
Mumbai 400 059, India
Tel: +91-22-31926107
Email: info@tanita.co.in
Web: www.tanita.co.in

TANITA (Shanghai) Trading Co. Ltd
Room 8005,
887 Huai Hai Zhong Lu,
Shanghai,
The People's Republic Of China
Tel: +86-21-6474-6803
Fax: +86-21-6474-7901
Email: info@tanita.co.jp
Web: www.tanita.com.cn

TANITA Europe B.V.
Hoogoorddreef 56E
1101 BE Amsterdam
The Netherlands
Tel: +31-20-560-29-70
Fax: +31-20-560-29-88
Email: info@tanita.eu
Web: www.tanita.eu

TANITA Corporation of America, Inc.
2625 South Clearbrook Drive,
Arlington Heights, IL 60005, USA
Tel: +1-847-640-9241
Fax: +1-847-640-9261
Email: 4health@tanita.com
Web: www.tanita.com

Product specifications are subject to change;
Content correct at the time of printing

