

New or interesting lichens and lichenicolous fungi from Belgium, Luxembourg and northern France. XIII.

Marion Eichler¹, Rainer Cezanne¹, Paul Diederich², Damien Ertz³, Dries Van den Broeck⁴, Pieter van den Boom⁵ & Emmanuël Sérusiaux⁶

¹ Kaupstraße 43, D-64289 Darmstadt, Germany (Eichler-Cezanne@t-online.de)

² Musée national d'histoire naturelle, 25 rue Munster, L-2160 Luxembourg, Luxembourg (paul.diederich@education.lu)

³ Jardin Botanique National de Belgique, Domaine de Bouchout, B-1860 Meise, Belgique (damien.ertz@br.fgov.be)

⁴ Nationale Plantentuin van België, Domein van Bouchout, B-1860 Meise, Belgium (dries.vandenbroeck@br.fgov.be)

⁵ Arafura 16, NL-5691 JA Son, The Netherlands (pvdboom@zonnet.nl)

⁶ Plant Taxonomy and Conservation Biology Unit, University of Liège, Sart Tilman B22, B-4000 Liège, Belgium (E.Serusiaux@ulg.ac.be)

Eichler, M., R. Cezanne, P. Diederich, D. Ertz, D. Van den Broeck, P. van den Boom & E. Sérusiaux, 2010. New or interesting lichens and lichenicolous fungi from Belgium, Luxembourg and northern France. XIII. *Bulletin de la Société des naturalistes luxembourgeois* 111: 33-46.

Abstract. Studies of large and mainly recent collections of lichens and lichenicolous fungi led to the addition of 25 taxa to the flora of Belgium, Luxembourg and northern France: *Absoconditella lignicola*, *Acarospora helvetica*, *Anema suffruticosum*, *Arthonia xanthoparmeliarum* (also new to Europe), *Clypeococcum cladonema*, *Hainesia xanthoriae*, *Julella fallaciosae*, *Lecania croatica*, *Lempholemma botryosum*, *Leptorhaphis atomaria*, *Melaspilea proximella*, *Merismatium decolorans*, *M. nigrillum*, *Parmeliopsis hyperopta*, *Psammia inflata*, *Pso-rotichia frustulosa*, *Pterygiopsis affinis*, *Ramonia chrysophaea*, *Reconditella physconiarum*, *Rhizocarpon infernum* f. *sylvaticum*, *Sarcopyrenia cylindrospora*, *Stigmidium cladoniicola*, *Thelocarpon impressellum*, *T. magnussonii* and *T. saxicola*. Eight additional taxa are reported in recent publications: *Arthonia protoparmeliopseos*, *A. varians*, *Biatora ligni-mollis*, *Caloplaca arnoldii* subsp. *obliterata*, *C. pusilla*, *Lecanora bandolensis*, *L. helicopsis* and *Ochrolechia bahusensis*. *Neocoleroa inundata* and *Pachyphiale fagicola* are newly reported for Belgium, and *Absoconditella delutula*, *Bacidia circumspecta*, *Chaenotheca chlorella*, *Cyrtidula quercus*, *Epigloea filifera*, *E. renitens*, *Lecania cyrtellina*, *Merismatium heterophractum*, *Nectriopsis micareae*, *Parmelina quercina*, *Phaeocalicium populneum*, *Ramonia interjecta*, *Sclerococcum griseisporodochium* and *Thelopsis rubella*, for Luxembourg.

1. Introduction

This paper continues the series of notes on the flora of lichens and lichenicolous fungi in Belgium, Luxembourg and northern France (Diederich & Sérusiaux 2000). It further includes the most recent updates regarding nomenclature and taxonomy of the species present in our study area.

The present paper focuses on species collected by the first two authors in four Luxembourg forest reserves. The following abbreviations are used in the text: “Laangmuer” refers to the Réserve forestière intégrale (RFI) 25 near Niederanven (IFBL: L8.57; inventory done in 2008, Eichler & Cezanne 2009), “Beetebuerger Bësch” to RFI 31 near Bettembourg

(M8.34, M8.35; 2009), “Enneschte Bësch” to RFI 29 near Leudelage (M8.24; 2009) and “Grouf” to RFI 32 near Schengen (M9.51; 2010). Specimens from these four forests are abbreviated using letters L (for Laangmuer), B (Beetebuerger Bësch), E (Enneschte Bësch) and G (Grouf), followed by the collecting number. All specimens collected during this inventory are kept in the private herbarium of P. Diederich. In the enumeration of specimens, the abbreviation ‘h’ refers to the private herbarium of the collector. The term “checklist” is used for the checklist of lichens and lichenicolous fungi in Belgium, Luxembourg and northern France (Diederich et al. 2010).

2. Survey of other publications on the lichen flora and vegetation of the study area

Boulanger et al. (2009) published a report from a lichenological excursion done in the Boulonnais (France, Pas-de-Calais) in 2008. Several species not previously accepted in the checklist were mentioned. In a supplement to this first paper, Boulanger et al. (2010) gave additional information on some rare or problematic taxa. *Arthonia varians* (Ach.) Nyl., a species usually growing on the saxicolous *Lecanora rupicola* (incl. *L. bicincta*) (Grube 2007), although reported from other hosts, such as *L. actophila* (Clauzade et al. 1989) and *L. helicopsis* (Wahlenb.) Ach. (Ihlen & Wedin 2008), is reported from *Lecanora helicopsis* (Boulanger et al. 2010) and is new to the checklist area. The host, *Lecanora helicopsis*, is as well new to the checklist area. *Diplotomma glaucostrum* (Nyl.) is a non-validly published new combination of *Buellia glaucoatra* (Nyl.) Clauzade; this species is considered as a synonym of *D. albostrum* (Hoffm.) Flot. by Nordin (2000), but as a distinct species by Roux (pers. comm.), distinguished by a thicker thallus and the occurrence on coastal rocks; Boulanger et al. (2009, 2010) state that the species has been observed in 1989 near cap Griz-Nez, but in the absence of any reference specimens it is wise to consider this report as doubtful. The report by Boulanger et al. (2009) of *Lecania aipospila* (Wahlenb.) Th.Fr. is not supported by any herbarium specimen and therefore has to be removed from the checklist (Boulanger et al. 2010); a previous Boulonnais record of this species (Van den Broeck et al. 2009) proved to represent *L. cf. fructigena* (Diederich et al. 2009). Boulanger et al. (2009: 175, 181) doubtfully reported *Lecanora ripartii* Lamy (they hesitated between *L. ripartii* and *L. atrynea*, the latter being a morphotype of *L. cenisia*), illustrated by a photograph done near cap Griz-Nez; later, Boulanger et al. (2010) stated that this was a misidentification for *L. campestris* (Schaer.) Hue. *Opegrapha trifurcata* Hepp, keyed out by Clauzade & Roux (1985), might be identi-

cal to the Boulonnais material published by Sparrius et al. (2002) as *Opegrapha saxatilis* DC. s.l.; a more detailed study of this group is urgently needed; following Roux (pers. comm.), the type of *O. saxatilis* [kept in G] belongs to the lichenicolous *O. rupestris* Pers., whilst the type of *O. trifurcata* is a species closely related to *Arthonia atra* (Pers.) A.Schneid. *Xanthoria aureola* (Ach.) Erichsen has never been correctly reported from the Boulonnais; the recent report by Van den Broeck et al. (2009) proved to be more strongly pigmented *X. parietina*; the report by Boulanger et al. (2009) is unfortunately not sustained by any herbarium specimen (Boulanger pers. comm.), all specimens collected belonging to *X. calcicola* or *X. parietina* (Boulanger et al. 2010).

Hellemans & Stappaerts (2009) discovered *Stereocaulon pileatum* on a brick wall as new to Flanders.

Van den Broeck et al. (2009) presented the report from a lichenological excursion done in 2008 near De Panne (Belgium, Mar. and Brab.). Many species are new records for Flanders or for the Maritime or Brabant phytogeographical districts. Further reports from excursions in Flanders refer to the surrounding of Mol (Van den Broeck 2009a), Balen and Meerhout (Van den Broeck 2009b), Tongerlo (Van den Broeck & Hellemans 2009) and Serskamp (Stieperaere & Van den Broeck 2009).

Bertrand et al. (2010) present a remarkable revision of the poorly known *Lecanora bandolensis* B. de Lesd. This species belongs to the *L. dispersa* group and is confined to coastal rocks. The authors have studied a specimen from our study area, collected in 1989 near Cap Gris-Nez by C. Van Haluwyn. We have examined an additional specimen (France, Mar., Pas-de-Calais, entre Ambleteuse et Wimereux, rochers au bord de la mer à 600 m au N de la Pointe aux Oies, E22.35, alt. 5 m, rochers de grès émergés en permanence, 2000, P. Diederich 14444, h).

Sérusiaux et al. (2010) report the discovery of *Biatora ligni-mollis* T. Sprib. & Printzen from Belgium (Ard.), where it was collected on an old *Quercus* in the forêt d'Anlier.

3. Taxonomical and nomenclatural changes

Jørgensen (2007) suggests that the correct name for *Synalissa symphorea* auct. is *S. ramulosa* (Hoffm. ex Bernh.) Fr.

Baloch et al. (2009) show that *Bryophagus* is a synonym of *Cryptodiscus*, and consequently they propose the new combination *C. gloeocapsa* (Arnold) Baloch, Gilenstam & Wedin for *B. gloeocapsa* Arnold.

Etayo & Diederich (2009) describe *Arthonia protoparmeliopseos* Etayo & Diederich, lichenicolous on *Protoparmeliopsis* (= *Lecanora muralis*, from Spain and Luxembourg (Lorr.).

Gaya (2009) revised the *Caloplaca saxicola* group. Three species are reported from our checklist area: *C. arnoldii* subsp. *obliterata* (Pers.) Gaya (from Luxembourg, Ard.), *C. pusilla* (A.Massal.) Zahlbr. (from France, Mar.) and *C. saxicola* (Hoffm.) Nordin (from France, Mar.), the two former being new for our checklist. A revision of the entire material from our study area still remains to be done.

Petractis hypoleuca (Ach.) Vězda is better included in *Gyalecta*, as *G. hypoleuca* (Ach.) Zahlbr. (Gilbert et al. 2009).

Kukwa (2009) reports *Ochrolechia bahusiensis* H.Magn. from Luxembourg. This corresponds to *O. androgyna* C sensu Tønsberg (1992). The species is not rare in Luxembourg, but a study of the entire material of *O. androgyna* s.lat. from our area of study remains to be done.

Orange et al. (2009) consider that *Verrucaria acrotella* auct., recently accepted as a distinct species, mainly by Dutch authors, is a synonym of *V. murina* auct.

Roux (2009) explains that the name *Zwackhiomyces immersus* (Arnold) Grube & Triebel should be replaced by the earlier *Z. socialis* (Körb.) Cl.Roux. That species appears to be confined to *Clauzadea* species. The material from our checklist area, which only occurs on *Bacidia bagliettoana*, might represent a distinct species.

The new combination *Llimoniella terricola* (Rehm ex Arnold) M.Schultz, Diederich & Ertz is proposed for the species previously named *Gelatinopsis leptogii* Ertz & Diederich (Diederich et al. 2010), of which the type is lichenicolous on *Epiphloea byssina* in Belgium.

Although Spier & Aptroot (2007) suggested *Cladonia rei* Schaer. to be a synonym of *C. subulata* (L.) F.H.Wigg., Dolnik et al. (2010) demonstrate that these are two phylogenetically distinct species, easily recognized by the presence or absence of homosekikaic acid.

Fryday & Lendemer (2010) transfer *Catilochroma pulverea* (Borrer) Kalb to *Megalalaria*, as *M. pulverea* (Borrer) Hafellner & E. Schreiner.

Hauck & Wirth (2010) combined several *Bacidia* species in *Bacidina*, amongst which the following are known from our study area: *Bacidina adastra* (Sparrius & Aptroot) M.Hauck & V.Wirth, *B. brandii* (Coppins & van den Boom) M.Hauck & V.Wirth, *B. saxenii* (Erichsen) M.Hauck & V.Wirth and *B. sulphurella* (Samp.) M.Hauck & V.Wirth.

Kocourková & Knudsen (2010) show that the fungus on *Pertusaria lactea* frequently called *Stigmatidium aggregatum* (Mudd) D.Hawksw. has to be called *S. eucline* (Nyl.) Vězda.

Nordin et al. (2010) present a phylogenetic analysis of *Aspicilia* and Megasporaceae. Several *Aspicilia* species present in our study area are transferred to the genus *Circinaria*: *C. caesiocinerea* (Malbr.) A.Nordin, S.Savić & Tibell, *C. calcarea* (L.) A.Nordin, S.Savić & Tibell, *C. contorta* (Hoffm.) A.Nordin, S.Savić & Tibell and *C. gibbosa* (Ach.) A.Nordin, S.Savić & Tibell, as well as *C. cupreogrisea* (Th.Fr.) A.Nordin, S.Savić & Tibell, a species reported as occurring doubtfully in this area. *Aspicilia recedens* (Taylor) Arnold is transferred to *Lobothallia*, as *L. recedens* (Taylor) A.Nordin, S.Savić & Tibell. *Aspicilia cinerea* (L.) Körb., the generic type, is the only species from our study area remaining with certainty in *Aspicilia*, while *A. aquatica* Körb. and *A. contorta* subsp. *hoffmaniana* S.Ekman & Fröberg have not been discussed in that paper. As some of these genera are poorly distinguished using morphological characters, and as the type of *Aspicilia* subgen. *Pachyothallia* was not included in the molecular analysis, we prefer to await additional studies, including more species, before accepting all these changes.

Timdal (2010) describes the new genus *Porpidinia* for the species *Toninia tumidula*, with the new combination *P. tumidula* (Sw.) Timdal.

4. New or interesting reports

Absconditella delutula (Nyl.) Coppins & H.Kilius

Luxembourg, Lorr.: Laangmuer, on sandstone pebbles, L7449, L7469; on dead wood, L7470; Grouf, on dead wood of *Picea*, G10.

This species was known from Belgium (Ertz et al. 2008, Sérusiaux et al. 2006) and is here reported as new to Luxembourg.

Absconditella lignicola Vězda & Pišút

Luxembourg, Lorr.: Beetebuerger Bësch (M8.35), on *Picea* wood, B1; Grouf, on dead wood of *Fagus*, G11.

A rarely collected, but probably more widespread and much overlooked species that is new to the checklist area.

Acarospora helvetica H.Magn.

Luxembourg, Lorr.: N of Folkendange, Brouderbur (K8.56), on a sandstone rock, 1981, *P. Diederich* 3423 (h).

France, Mosan: Ardennes, Chooz, rochers de Petit-Chooz sur la rive droite de la Meuse, face au pont (J5.35), affleurement de roches de l'Emsien supérieur (Grauwacke de Hierges), schistes argilo-calcareux, facilement décalcifiés, 1999, *P. Diederich* 16306 (h).

This species was included within the concept of *A. complanata* H.Magn. by Clauzade & Roux (1982), but has recently been recognized as a distinct taxon (Roux 2007). It is new to the checklist area. Both specimens have been identified by C. Roux.

Anema suffruticosum P. Morreno & Egea

France, Mosan: Ardennes, Givet, rive gauche de la Meuse à la sortie amont de la ville, sous le fort

de Charlemont (J5.25), affleurements de calcaires compacts du Givetien sur flanc sud avec suintements deau temporaires, 1999, *P. Diederich* 15693 (h).

A very rare Mediterranean species, initially described from SE Spain (Moreno & Egea 1992), later also discovered in France (Var) (Roux et al. 2003) and Italy (Nimis & Tretiach 2004). Although our material has been identified by M. Schultz as *A. cf. suffruticosum*, we accept this identification as it is the best hypothesis with our current knowledge on the taxonomy of this difficult group. The species is new to our checklist area.

Arthonia xanthoparmeliarum Etayo

Luxembourg, Ard.: Bourscheid, along road to Ettelbruck, near Michelau, W exposed schistose outcrops along road (K8.45), on *Xanthoparmelia conspersa*, 2002, *P. & B. van den Boom* 29888 (h).

This lichenicolous ascomycete was described from Chile on saxicolous *Xanthoparmelia* (Etayo & Sancho 2008) and has also been reported from the U.S.A. (California) by Kocourková (2009). It is new to Europe.

Arthopyrenia salicis A.Massal.

Luxembourg, Lorr.: Enneschte Bësch, on young *Fraxinus* by a pond, E3, *P. Diederich* 16811 (h); Beetebuerger Bësch, on young *Fraxinus* and *Quercus*, field observation; Grouf, on young *Fraxinus*, field observation.

This rare species was previously known from one Luxembourg locality (Ard.) on *Carpinus* along a stream (Sérusiaux et al. 1999).

Bacidia circumspecta (Vain.) Malme

Luxembourg, Lorr.: Laangmuer, on the base of *Fagus*, L7457.



Fig. 1. *Anema suffruticosum*, a very rare Mediterranean lichen, discovered in northern France (Ardennes) (*Diederich* 15693). Scale bar = 0.5 mm.



Fig. 2. *Hainesia xanthoriae*, a probably widespread, but overlooked lichenicolous fungus, usually growing on *Xanthoria parietina* (Diederich 16955). Scale bar = 0.5 mm.

A relatively rare species, known from a few Belgian localities (Ertz et al. 2008) and reported here as new to Luxembourg.

Chaenotheca chlorella (Ach.) Müll.Arg.

Luxembourg, Lorr.: Beetebuerger Bësch (M8.34, M8.35), on *Fagus* wood, B12, B13.

New to Luxembourg.

Clypeococcum cladonema (Wedd.) D.Hawksw.

Belgium, Mosan: Rouillon, les Tiennes de Rouillon (H5.16), on an exposed siliceous rock, on *Xanthoparmelia loxodes*, 2008, D. Ertz 12230 (BR).

A lichenicolous pyrenomycete, initially described from *Xanthoparmelia* species with a brown thallus, later also recorded on thalli of *Cetrelia* (e.g., Hafellner 1995). New to the checklist area.

Collema fragile Taylor

Belgium, Mosan: Anseremme, Roches de Freyr, au sommet de l'affleurement (H5.57), 2009, D. Ertz 15196 (BR); Dinant, à l'ouest d'Anseremme, Rochers de Moniat (H5.47), 2009, D. Ertz 15232 & J.-P. Duvivier (BR); Anseremme, anc. Prieuré, cemetery (H5.47), on the ground with *Leptogium teretiusculum*, 2009, D. Van den Broeck 3291 (h).

This species was reported as new to Belgium by Ertz et al. (2008), based on a 1962 collection. Several recent specimens confirm that the species still exists in Belgium (Mosan).

Cyrtidula quercus (A.Massal.) Minks

Luxembourg, Lorr.: Beetebuerger Bësch (M8.34), on branches of young *Quercus*, B19; Enneschte Bësch, on branches of *Quercus*, E20; Grouf, on

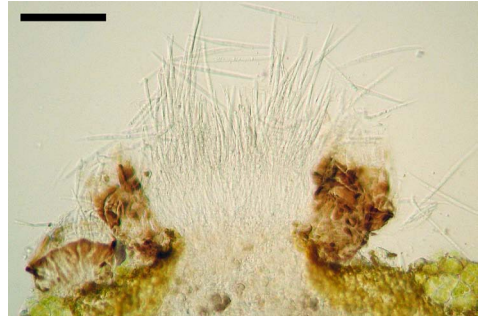


Fig. 3. *Hainesia xanthoriae*, section through conidioma, showing hyaline, acicular conidia (Diederich 16955). Scale bar = 50 µm.

branches of *Populus*, G12, on branches of young *Quercus*, G13.

A non-lichenized species, although mainly studied by lichenologists, probably often overlooked. New to Luxembourg.

Epigloea filifera Döbbelér

Luxembourg, Lorr.: Laangmuer, on bark of fallen *Picea*, L7388.

A doubtfully lichenized, algicolous fungus, previously known from Belgium (Ard.) (Sérusiaux et al. 1999). New to Luxembourg.

Epigloea renitens (Grumann) Döbbelér

Luxembourg, Lorr.: Laangmuer, on soil and plant debris, L7458; Grouf, on dead wood, G14.

Another algicolous species that was previously known in our study area from one locality in Belgium (Mosan) (Sérusiaux et al. 2003). New to Luxembourg.

Hainesia xanthoriae Brackel

Luxembourg, Lorr.: Lorentzweiler (L8.46), on *Syringa* in a garden, on *Xanthoria parietina*, 2010, P. Diederich 16906 (h); Bertrange, Tossenbergr (M8.14), on branches of *Fraxinus*, on *X. parietina*, 2010, P. Diederich 16934 (h); N of Strassen (M8.14), on branches of *Fraxinus*, on *X. parietina*, 2010, P. Diederich 16959 (h).

This recently described lichenicolous anamorphic fungus, previously known from Germany and Greenland, mainly develops on thalli and apothecia of *Xanthoria* species (Brackel 2009). The repeated discovery in villages suggests that it must be widespread and

probably rather common, but overlooked. The species is new to the checklist area.

Julella fallaciosa (Arnold) R.C.Harris

Luxembourg, Lorr.: Grouf, on branches of *Fagus*, G15, G21.

A probably non-lichenized species, although frequently studied by lichenologists. New to the checklist area.

Lecania croatica (Zahlbr.) Kotlov

= *Catillaria croatica* Zahlbr.

Belgium, Mosan: Eprave, SW of Bois de Noulaiti, left side of the river Lomme (J6.24), disturbed woodland along the river, with *Ulmus laevis* and including *Populus* plantations, 1997, E. Sérusiaux (LG); Waulsort, left bank of the Meuse, Fond des Vaux, "Petit Bois" (H5.56), mixed woodland with boles of *Quercus*, with a dense *Buxus* understory in a small, rather deep valley, on *Tilia*, 1994, P. Diederich 4982 (h) & E. Sérusiaux (LG). Ard.: S of Neufchâteau, Rossignol, centre of village (L7.11), on *Fraxinus* in parkland, 2006, P. van den Boom 37074 (h).

Luxembourg, Lorr.: Beetebuenger Bësch (M8.34, M8.35), on *Fagus*, B63, B68; on *Sambucus*, B70; Enneschte Bësch, on *Carpinus*, E58; on *Acer campestre*, E59; on *Fraxinus*, E60, E61; Grouf, on *Acer campestre*, G16.

France, Lorr.: Dépt. Meuse, S de Montmédy, entre Iré-les-Prés et Iré-le-Sec, bois de Juvigny (M6.58), frênaie-aulnaie de fond de vallée, sur *Corylus*, 1989, E. Sérusiaux 10407-b (LG).

This is a very inconspicuous, generally sterile, corticolous lichen with a sorediate thallus that might often have been overlooked. It was previously known from several Central or Eastern European countries and from the U.S.A. (Cezanne et al. 2008, Hafellner et al. 2005, Harris & Lendemer 2010). The species is new to the checklist area. The identification of several Luxembourg specimens has kindly been confirmed by C. Printzen.

Lecania cyrtellina (Nyl.) Sandst.

Luxembourg, Lorr.: Enneschte Bësch, on *Acer campestre*, E7883; Laangmuer, on *Fagus*, L7509; Strassen, 400 m NE of Scouts home (M8.14), on *Sambucus*, 2009, P. Diederich 16814 (h, herb. van den Boom).

A relatively rare, probably frequently overlooked species. New to Luxembourg.

Lempholemma botryosum (A.Massal.) Zahlbr.

France, Mosan: Ardennes, Givet, rive gauche de la Meuse à la sortie amont de la ville, sous le fort de Charlemont (J5.25), affleurements de calcaires compacts du Givetien sur flanc sud et avec suintements d'eau temporaires, mais fréquents, 1999, P. Diederich 15699 (h).

A rare cyanobacterial species, here reported as new to the checklist area. Material identified by M. Schultz.

Leptorhaphis atomaria (Ach.) Szatala

Luxembourg, Lorr.: W of Bertrange, Houscht (M8.13), on branches of *Populus*, 2010, P. Diederich 16927 (h, BR, herb. Eichler-Cezanne).

This ascomycete is probably not or only facultatively lichenized, although usually associated with *Trentepohlia* (Aguirre-Hudson 1991). It was reported from Luxembourg by Koltz (1897: 310), but this was not accepted by Diederich & Sérusiaux (2000), as no specimen seems to exist in LUX. The species is therefore new to our study area.

Melaspilea proximella (Nyl.) Nyl.

Luxembourg, Lorr.: Beetebuenger Bësch (M8.35), on old *Quercus*, B26; Laangmuer, on *Quercus*, L7453; Grouf, on *Quercus*, G17.

A facultatively lichenized fungus that is new to our checklist area.

Merismatium decolorans (Arnold) Triebel

=? *Sphaerulina intermedia* Vouaux

Luxembourg, Ard.: Esch-sur-Sûre, ruins of old castle (K8.32), on *Leptogium gelatinosum* and *Agonimia tristicula*, 2002, P. Diederich 16786 (h).

The ascospores of this lichenicolous pyrenomyces were said to be pale to medium brown (Triebel 1989). In our specimen, they are more or less hyaline, almost surely as they are young and immature. Although the type of *Sphaerulina intermedia* Vouaux is lost, the original description (Vouaux 1913: 37) suggests that this represents a synonym of *M. decolorans* in which the ascospores were as well immature and therefore almost colourless (yellowish when old); that taxon was described from a thallus of "*Leptogium microscopicum*" in northern France (Mar.). The species is new to the checklist area.

Merismatium heterophractum (Nyl.) Vouaux
Luxembourg, Lorr.: Pétange, Prënzebiërg (M8.31), dans une pelouse de mousses et de *Cladonia* sur roche, sur *Cladonia rei*, 2010, *P. Diederich* 16956 (h).

This lichenicolous pyrenomycete was known from France (Lorr.) on *Bilimbia sabuletorum* (Diederich et al. 1991). *Cladonia* is a new host genus. The species is new to Luxembourg.

Merismatium nigritlellum (Nyl.) Vouaux
= *Merismatium lopadii* (Anzi) Zopf
=? *Polyblastia gothica* Th. Fr.

France, Mosan: Ardennes, Chooz, rochers de Petit-Chooz sur la rive droite de la Meuse, face au pont (J5.35), schistes argilo-calcaireux, sur *Leptogium lichenoides*, 1999, *P. Diederich* 16284 (h).

This lichenicolous species was reported from Luxembourg by Diederich (1986) as *M. lopadii*, based on two specimens on *Lecanora conizaeoides*. Diederich & Sérusiaux (2000) regarded this record as dubious, as the ascomata are smaller (c. 70 µm diam.) than in typical *M. nigritlellum* and the ascospores narrower and with a lower number of cells. The identity of these two specimens requires further studies.

Diederich et al. (2009) published *Polyblastia gothica* from Luxembourg, based on a specimen growing on soil between thalli of *Leptogium pulvinatum*. Hafellner (2010) suggests that *P. gothica* is almost surely a synonym of *M. nigritlellum*. The French specimen cited above is lichenicolous on *Leptogium lichenoides*. The ascospores are much paler than in the Luxembourg specimen of *P. gothica*, which might just reflect a different degree of maturity of the ascomata, but for the rest fits *M. nigritlellum* perfectly. We propose therefore to accept *Merismatium nigritlellum* as occurring in our checklist area, with *P. gothica* as a possible synonym.

Nectriopsis micareae Diederich, van den Boom & G. Ernst

Luxembourg, Ard.: E of Clervaux, E of Roder, Reiteschiërg, path S of brooklet Kënzelbaach (J8.45), on exposed roots of *Picea*, on *Micarea viridileprosa*, 2007, *P. van den Boom* 38300 (h).

This lichenicolous ascomycete is relatively rare and appears to be confined to *Micarea*

viridileprosa. It was known from one locality in Belgium (Camp.) and one in northern France (Mar.) (Sparrius et al. 2002), and is reported here as new to Luxembourg.

Neocoleroa inundata (Vain.) Diederich

Belgium, Fl.: E of Gent, centre of Lokeren (Oost-Vlaanderen), old churchyard (C3.57), on *Bacidina caligans*, 2010, *P. van den Boom* 44822 (h).

A rarely collected, but probably more widespread lichenicolous ascomycete, here reported as new to Belgium.

Pachyphiale fagicola (Hepp) Zwackh

Belgium, Mosan: Waulsort (Hastiëre), village de vacances de Waulsort, Sur le Pairy 1 (H5.56), on *Fraxinus*, 2009, *D. Van den Broeck* 3337 (h).

A rare species, previously known from three localities in Luxembourg and northern France (Diederich et al. 2006, van den Boom et al. 1994). New to Belgium.

Parmelina quercina (Willd.) Hale var. *quercina*

Luxembourg, Lorr.: Beetebuerger Bësch (M8.35), on branch of *Fagus*, B41; Schifflange, parc près de la mairie (M8.43), on *Acer*, 2009, *D. Teuber* 2939 (h) & *J. Mersch*; *ibid.*, 2010, *P. Diederich* 17096 (h) & *J. Mersch*.

The discovery of this species was completely unexpected, as it was considered as extinct in eastern Belgium since 1865 (Diederich & Sérusiaux 2000). It has recently been found several times in western Belgium (Diederich et al. 2009). New to Luxembourg.

Parmeliopsis hyperopta (Ach.) Arnold

Luxembourg, Lorr.: Laangmuer, on *Fagus*, L7529. This macrolichen is new to our checklist area.

Phaeocalicium populneum (Duby) A.Schmidt

Luxembourg, Lorr.: Grouf, on branches of *Populus*, G1.

This obviously rare species has recently been discovered in Belgium (Ertz & Duviérier 2006) and is here reported as new to Luxembourg.

Physcia leptalea (Ach.) DC.

Luxembourg, Lorr.: Enneschte Bësch, on branch of *Fraxinus*, E39.

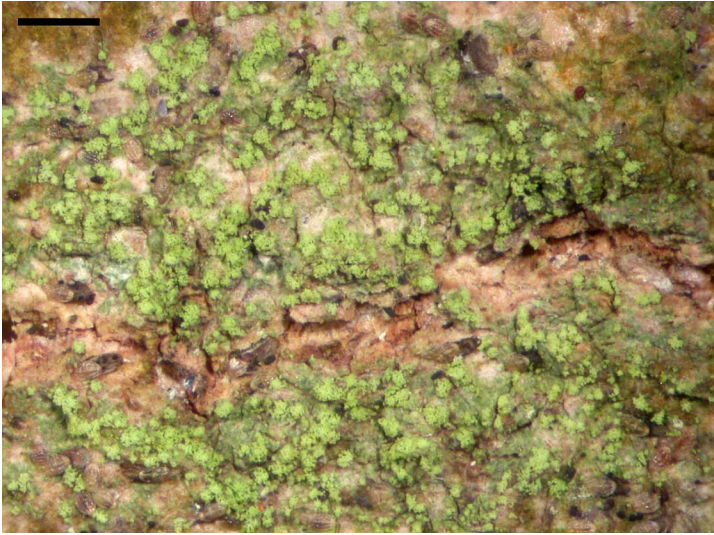


Fig. 4. *Lecania croatica*, an inconspicuous, often overlooked, frequently sterile, corticolous lichen species (G16). Scale bar = 1 mm.

The species was considered as extinct in Belgium and Luxembourg (Diederich & Sérusiaux 2000), but has recently been rediscovered in Luxembourg (Sérusiaux et al. 2003). This is the second recent collection in Luxembourg, suggesting that the species is spreading.

Psammia inflata Earl.-Benn. & D.Hawksw.
Luxembourg, Lorr.: Grouff; on *Quercus*, in humid situation, on *Lepraria incana*, G2.

This rarely collected lichenicolous hyphomycete is new to the checklist area.

Psorotichia frustulosa Anzi

France, Mosan: Ardennes, Givet, rive gauche de la Meuse à la sortie amont de la ville, sous le fort

de Charlemont (J5.25), affleurements de calcaires compacts du Givetien sur flanc sud et avec suintements d'eau temporaires, mais fréquents, 1999, P. Diederich 15688 (h).

A rare Mediterranean species, here reported as new to our checklist area.

Pterygiopsis affinis (A.Massal.) Henssen

France, Mosan: Ardennes, Givet, rive gauche de la Meuse à la sortie amont de la ville, sous le fort de Charlemont (J5.25), affleurements de calcaires compacts du Givetien sur flanc sud et avec suintements d'eau temporaires, mais fréquents, 1999, P. Diederich 15686 (h).

A rare Mediterranean species, here reported as new to our checklist area. The material has been identified by M. Schultz.

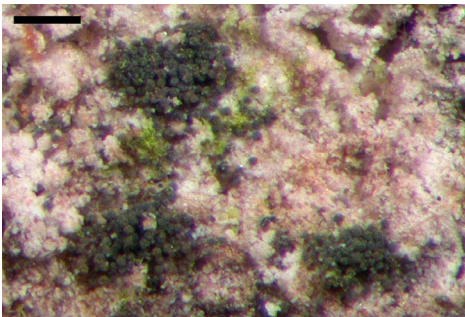


Fig. 5. *Psammia inflata*, a rare lichenicolous hyphomycete, collected in Luxembourg on dying thalli of *Lepraria incana* (G2). Scale bar = 0.2 mm.

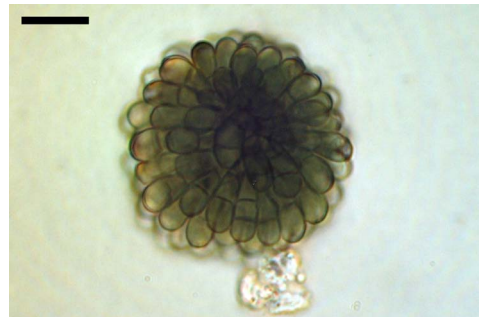


Fig. 6. Multicellular conidium of *Psammia inflata* (Germany, Hessen, Erfelden, 2009, on *Lepraria incana*, Cezanne-Eichler 7901). Scale bar = 10 μ m.

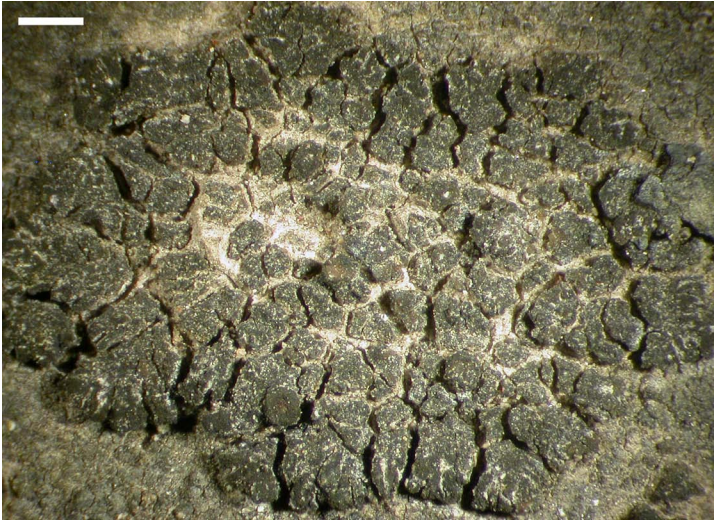


Fig. 7. *Pterygiopsis affinis*, a rare Mediterranean lichen collected in northern France (Ardennes) (Diederich 15686). Scale bar = 1 mm.



Fig. 8. *Reconditella physconiarum*, a lichenicolous ascomycete producing large perithecia on the thallus margin of *Physconia* species (Diederich 16955). Scale bar = 0.5 mm.

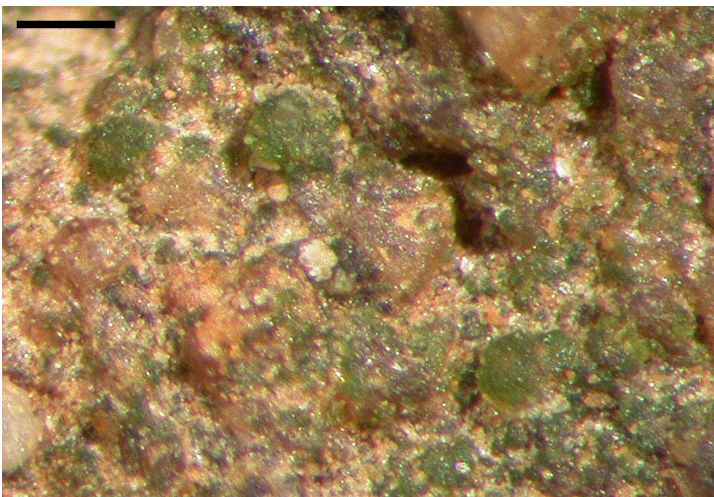


Fig. 9. *Thelocarpon magnussonii*, a minuscule, frequently overlooked lichen, collected twice on sandstone pebbles in Luxembourg (L7386). Scale bar = 0.2 mm.

Ramonia chrysophaea (Pers.) Vězda

Luxembourg, Lorr.: Beetebuerger Bësch (M8.34, M8.35), on dead bark of *Quercus*, B44.

A very rare or overlooked species, new to our checklist area.

Ramonia interjecta Coppins

Luxembourg, Lorr.: Enneschte Bësch, on *Sambucus nigra*, E44; Laangmuer, on *S. racemosa*, L7443.

A doubtfully lichenized species recently collected several times in Belgium on *Salix* and *Sambucus* (Sérusiaux et al. 2003, van den Boom & van den Boom 2006). New to Luxembourg.

Reconditella physconiarum Hafellner & Matzer

Luxembourg, Lorr.: Pétange, Prënzeberg (M8.31), on *Salix*, on *Physconia distorta*, 2010, *P. Diederich* 16955 (h).

A rare lichenicolous ascomycete, producing large, conspicuous, superficial perithecia along the margin of the host thallus. New to the checklist area.

Rhizocarpon infernum (Nyl.) Lyngby f. *sylvaticum* Fryday

Belgium, Ard.: 6.5 km SW of Herbeumont, NE of Muno, Roche à l'Appel (L6.45), N and W exposed siliceous outcrops, 2006, *P. & B. van den Boom* 37175 (h).

This species is new to our checklist area, and the recently described forma (Fryday 2002) even new to Central Europe. It was previously known from the British Isles, Sweden and North America and is probably widespread, but overlooked in Europe.

Sarcopyrenia cylindrospora (P.Crouan & H.Crouan) M.B.Aguirre

France, Mosan: Ardennes, Chooz, rochers de Petit-Chooz sur la rive droite de la Meuse, face au pont (J5.35), affleurement de roches de l'Emsien supérieur (Grauwacke de Hierges), sur *Aspicilia*, 1999, *P. Diederich* 16291 (h).

A rarely collected lichenicolous ascomycete, usually growing over *Aspicilia* thalli (Navarro-Rosinés & Hladun 1990, 1992). New to our checklist area.

Sclerococcum griseisporodochium Etayo

Luxembourg, Lorr.: Laangmuer, on vertical face of natural sandstone outcrop, L7541.

A rare saxicolous species, recently reported from Belgium (Mosan) by Ertz et al. (2008). New to Luxembourg.

Sphaerellothecium parietinarium (Linds.) Hafellner & V.John

Belgium, Mosan: Weillen, chapelle des Marronniers (H5.46), on wall of chapel, on *Xanthoria parietina*, 2008, *D. Ertz* 12204 & *J.-P. Duvivier* (BR).

A rare lichenicolous pyrenomycete confined to *Xanthoria* thalli, previously known from one Luxembourg collection on *X. calcicola* (van den Boom et al. 1996), here reported as new to Belgium.

Stigidium cladoniicola Zhurb. & Diederich

Belgium, Ard.: 2.4 km SE of Herbeumont, forêt d'Herbeumont, 0.5 km SE of Anc. Prieuré de Conques (L6.25), outcrops in mixed sloping forest above Semois, on *Quercus*, on *Cladonia*, 2006, *P. & B. van den Boom* 37227 (h).

This recently described species was known only from the type locality in northern Ural, Russia, on *Cladonia macrophylla* Zhurbenko & Diederich (2008). It is new to the checklist area.

Thelocarpon epibolum Nyl.

Luxembourg, Lorr.: Beetebuerger Bësch (M8.34, M8.35), on calcareous stone, B52; on dead wood of *Fagus* B53, B54; Laangmuer, on dead wood of *Fagus*, L7510; Grouf, on dead wood of *Fagus*, G19.

The presence of this species in Luxembourg was considered as doubtful by Diederich & Sérusiaux (2000) and can herewith be definitely confirmed.

Thelocarpon impressellum Nyl.

Luxembourg, Lorr.: W Steinfort, berge de l'Eisch (L8.51), terricole, sur débris végétaux entre thalles de *Cladonia pocillum*, 2009, *P. Diederich* 16823 (h).

New to the checklist area.

Thelocarpon intermediellum Nyl.

Luxembourg, Lorr.: Enneschte Bësch, on dead wood of *Picea* and *Quercus*, E49, E50; Laangmuer, on sandstone pebble, L7518.

It is interesting to report these new finds of a rare species previously known only from a single collection in our area of study (Luxembourg, Ard.) (Diederich et al. 1988).

Thelocarpon magnussonii G.Salisb.

Luxembourg, Lorr.: Laangmuer, on sandstone pebble, L7386; Grouf, on pebble, G20.

A very rare, minuscule lichen (e.g., Cezanne et al. 2008), probably more widespread or overlooked, reported here as new to our checklist area.

Thelocarpon saxicola (Zahlbr.) H.Magn.

Luxembourg, Lorr.: Laangmuer, on sandstone pebble, L7373.

Another extremely rare species (e.g., Cezanne et al. 2008), also new to the checklist area.

Thelopsis rubella Nyl.

Luxembourg, Lorr.: Grouf, on *Quercus*, G3.

This is an unexpected discovery of a particularly rare lichen species, covering large parts of an old *Quercus* trunk in a forest. In our checklist area, it was known from a single, very old *Tilia* tree near a cemetery in France (Lorr.). New to Luxembourg.

Acknowledgments

We warmly thank Claude Roux for critically reading and commenting on the manuscript and for identifying the *Acarospora helvetica* specimens, Christian Printzen for confirming the identification of several *Lecania croatica* specimens, Matthias Schultz for identifying the material of *Anema suffruticosum*, *Lempholemma botryosum*, *Pterygiopsis affinis*, Birgit Kanz for performing TLC analyses of several specimens, and Jacques Mersch and Dietmar Teuber for sharing with us their discovery of *Parmelina quercina*. Claude Roux, Marc Boulanger and Chantal Van Haluwyn kindly gave precious information on some lichens recently published from the Boulonnais region. The two first authors thank Danièle Murat (Administration de la nature et des forêts) for kind approval to publish the finds collected as part of long-term studies in four Luxembourg forest reserves.

References

Aguirre-Hudson, B., 1991. A taxonomic study of the species referred to the ascomycete genus

Leptorhaphis. *Bulletin of the British Museum (Natural History)*, *Botany* 21: 85-192.

Baloch, E., G. Gilenstam & M. Wedin, 2009. Phylogeny and classification of *Cryptodiscus*, with a taxonomic synopsis of the Swedish species. *Fungal Diversity* 38: 51-68.

Bertrand, M., C. Roux & M. Barbero, 2010. *Lecanora bandolensis* B. de Lesd., une espèce peu connue. *Bulletin d'informations de l'Association française de lichénologie* 35: 1-16.

Boulanger, M., J.-P. Gavériaux, N. Malle, C. Van Haluwyn & M. Vanbrugghe, 2009. Session lichénologique sur le littoral du Pas-de-Calais dans le Boulonnais chez les Ch'tis lichénologues. *Bulletin d'informations de l'Association française de lichénologie* 34: 167-185.

Boulanger, M., N. Malle & C. Van Haluwyn, 2010. Complément au compte rendu de la session lichénologique sur le littoral du Pas-de-Calais en mai 2008. *Bulletin d'informations de l'Association française de lichénologie* 35: 97-99.

Brackel, W. von, 2009. Weitere Funde von flechtenbewohnenden Pilzen in Bayern – Beitrag zu einer Checkliste IV. *Berichte der Bayerischen Botanischen Gesellschaft* 79: 5-55.

Cezanne, R., M. Eichler, M.-L. Hohmann & V. Wirth, 2008. Die Flechten des Odenwaldes. *Andrias* 17: 1-520.

Clauzade, G. & C. Roux, 1982. Les *Acarospora* de l'Europe occidentale et de la région méditerranéenne. *Bulletin du Musée d'Histoire Naturelle de Marseille* 41 ['1981']: 41-93.

Clauzade, G. & C. Roux, 1985. Likenoj de Okcidenta Europo. Ilustrita Determinlibro. *Bulletin de la Société Botanique du Centre-Ouest*, nouv. série, num. spéc. 7, Royan, France, 893 pp.

Clauzade, G., P. Diederich & C. Roux, 1989. Nelikenigintaj fungoj likenlogaj. Ilustrita determinlibro. *Bulletin de la Société Linnéenne de Provence, Numéro Spécial* 1: 1-142.

Diederich, P. 1986. Lichenicolous fungi from the Grand Duchy of Luxembourg and surrounding areas. *Lejeunia* 119: 1-26.

Diederich, P., D. Ertz & J. Etayo, 2010. An enlarged concept of *Llimoniella* (lichenicolous Helotiales), with a revised key to the species and notes on related genera. *Lichenologist* 42: 253-269.

Diederich, P., D. Ertz, N. Stapper, E. Sérusiaux, D. Van den Broeck, P. van den Boom & C. Ries, 2010. The lichens and lichenicolous fungi of Belgium, Luxembourg and northern France. URL: <http://www.lichenology.info> [27.05.2010].

- Diederich, P., D. Ertz, D. Van den Broeck, P. van den Boom, M. Brand & E. Sérusiaux, 2009. New or interesting lichens and lichenicolous fungi from Belgium, Luxembourg and northern France. XII. *Bulletin de la Société des naturalistes luxembourgeois* 110: 75-92.
- Diederich, P. & E. Sérusiaux, 2000. The lichens and lichenicolous fungi of Belgium and Luxembourg. An annotated checklist. Musée national d'histoire naturelle, Luxembourg, 208 pp.
- Diederich, P., E. Sérusiaux, A. Aptroot & F. Rose, 1988. Lichens et champignons lichénicoles nouveaux ou intéressants pour la flore de la Belgique et des régions voisines. IV. *Dumortiera* 42: 17-35.
- Diederich, P., E. Sérusiaux & P. van den Boom, 1991. Lichens et champignons lichénicoles nouveaux ou intéressants pour la flore de la Belgique et des régions voisines. V. *Lejeunia*, N. S. 136: 1-47.
- Diederich, P., D. Van den Broeck, D. Ertz, J. Signoret, A. Aptroot, L. Sparrius, D. Jordaens & E. Sérusiaux, 2006. Contribution to the knowledge of lichens in northern France. *Bulletin de la Société des naturalistes luxembourgeois* 106: 53-62.
- Dolnik, C., A. Beck & D. Zarabska, 2010. Distinction of *Cladonia rei* and *C. subulata* based on molecular, chemical and morphological characteristics. *Lichenologist* 42: 373-386.
- Eichler, M. & R. Cezanne, 2009. Die Flechten (Lichenes) des Naturwaldreservates "Laangmuer". In: Murat, D. (eds.): Naturwaldreservate in Luxemburg, Bd. 5, Zoologische und botanische Untersuchungen "Laangmuer" 2007-2008, Naturverwaltung Luxemburg, pp. 194-226.
- Ertz, D., P. Diederich, M. Brand, P. van den Boom & E. Sérusiaux, 2008. New or interesting lichens and lichenicolous fungi from Belgium, Luxembourg and northern France. XI. *Bulletin de la Société des naturalistes luxembourgeois* 109: 35-51.
- Ertz, D. & J.-P. Duvivier, 2006. Les lichens du bassin hydrographique de l'Hermeton (Belgique): flore et mesures de conservation. *Bulletin de la Société des Naturalistes Luxembourgeois* 107: 39-62.
- Etayo, J. & P. Diederich, 2009. *Arthonia protoparmeliopseos*, a new lichenicolous fungus on *Protoparmeliopsis muralis* from Spain and Luxembourg. *Bulletin de la Société des naturalistes luxembourgeois* 110: 93-96.
- Etayo, J. & L. G. Sancho, 2008. Hongos liquenícolas del Sur de Sudamérica, especialmente de Isla Navarino (Chile). *Bibliotheca Lichenologica* 98: 302 pp.
- Fryday, A. M., 2002. A revision of the species of the *Rhizocarpon hochstetteri* group occurring in the British Isles. *Lichenologist* 34: 451-477.
- Fryday, A. M. & J. C. Lendemer, 2010. Reassessment of the genus *Catillochroma* (lichenized Ascomycota, Ramalinaceae). *Lichenologist* 42: 587-600.
- Gaya, E. 2009. Taxonomical revision of the *Caloplaca saxicola* group (Teloschistaceae, lichen-forming Ascomycota). *Bibliotheca Lichenologica* 101: 191 pp.
- Gilbert, O. L., P. W. James & R. G. Woods, 2009. *Gyalecta* Ach. (1808). In: Smith, C.W., A. Aptroot, B. J. Coppins, A. Fletcher, O. L. Gilbert, P. W. James & P. A. Wolseley (eds.). The lichens of Great Britain and Ireland, British Lichen Society, London: 417-421.
- Grube, M., 2007. *Arthonia*. In: T. H. Nash III, C. Gries & F. Bungartz: Lichen Flora of the Greater Sonoran Desert Region. Volume 3. Lichens Unlimited, Arizona State University, Tempe, pp. 39-61.
- Hafellner, J., 1995. Bemerkenswerte Funde von Flechten und lichenicolen Pilzen auf Makro-nesischen Inseln. I. Erstnachweise einiger Gattungen. In: Daniëls, F. J. A., M. Schulz & J. Peine (eds.): Flechten Follmann. Contributions to lichenology in honour of Gerhard Follmann. Geobotanical and Phytotaxonomical Study Group, Botanical Institute, University of Cologne, Cologne, pp. 427-439.
- Hafellner, J., 2010. *Halospora* resurrected and segregated from *Merismatium*. *Bibliotheca Lichenologica* (in press).
- Hafellner, J., W. Petutschnig, C. Taurer-Zeiner & H. Mayrhofer, 2005. Über einige bemerkenswerte Flechtenfunde in Kärnten, hauptsächlich in den Gurktaler Alpen. *Carinthia II* 195: 423-440.
- Harris, R. C. & J. C. Lendemer, 2010. A review of *Lecania croatica* (syn. *Catillaria croatica*) in North America. *Opuscula Philolichenum* 8: 41-49.
- Hauck, M. & V. Wirth, 2010. New combinations in *Bacidina*. *Herzogia* 23: 15-17.
- Hellemans, K. & H. Stappaerts, 2009. *Stereocaulon pileatum* (Staafkorrelloof), nieuw voor Vlaanderen. *Muscillanea* 29: 30-33.
- Ihlen, P. G. & M. Wedin, 2008. An annotated key to the lichenicolous Ascomycota (including mitosporic morphs) of Sweden. *Nova Hedwigia* 86: 275-365.
- Jørgensen, P. M., 2007. *Synalissa*. *Nordic Lichen Flora* 3: 71-72.

- Kocourková, J., 2009. Observations on the genus *Neolamya*, with the description of the new species *N. xanthoparmeliae* (Ascomycota, genera incertae sedis). *Opuscula Philolichenum* 6: 137-148.
- Kocourková, J. & K. Knudsen, 2010. *Stigmidium eucline* is not a synonym of *Stigmidium aggregatum*. *Opuscula Philolichenum* 8: 101-105.
- Koltz, J.-P.-J., 1897. Prodrôme de la flore du Grand-Duché de Luxembourg, 2^{me} partie, Licheneés. *Recueil des Mémoires et des Travaux de la Société Botanique de Luxembourg* 13: 91-349.
- Kukwa, M., 2009. The lichen genus *Ochrolechia* in Poland III with a key and notes on some taxa. *Herzogia* 22: 43-66.
- Moreno, P. P. & J. M. Egea, 1992. Estudios sobre el complejo *Anema-Thyrea-Peccania* en el sureste de la Península Ibérica y norte de África. *Acta Botanica Barcinonensis* 41: 1-66.
- Navarro-Rosinés, P. & N. L. Hladun, 1990. El género *Sarcopyrenia* Nyl. (ascomicetes liquenícolas) en Europa y norte de África. *Candollea* 45: 469-489.
- Navarro-Rosinés, P. & N. L. Hladun, 1992. Nuevas localidades para *Sarcopyrenia cylindrospora* (Ascomicetes liquenícolas). *Folia Botanica Miscellanea* 8: 51-53.
- Nimis, P. L. & M. Tretiach, 2004. Delimiting Tyrrhenian Italy: a lichen foray in the SW part of the peninsula. *Bibliotheca Lichenologica* 88: 465-478.
- Nordin, A., 2000. Taxonomy and phylogeny of *Buellia* species with pluriseptate spores (Lecanorales, Ascomycotina). *Symbolae Botanicae Upsalienses* 33: 1-117.
- Nordin, A., A. Savić & L. Tibell, 2010. Phylogeny and taxonomy of *Aspicilia* and *Megasporaceae*. *Mycologia* 102: 1339-1349.
- Orange, A., D. L. Hawksworth, P. M. McCarthy & A. Fletcher, 2009. *Verrucaria* Schrad. (1794). In: Smith, C.W., A. Aptroot, B. J. Coppins, A. Fletcher, O. L. Gilbert, P. W. James & P. A. Wolseley (eds.). The lichens of Great Britain and Ireland, British Lichen Society, London: 931-957.
- Roux, C., 2007. Likenoj de Okcidenta Eŭropo. Suplemento 4a: eltirajoj 2 (extraits 2). *Bulletin d'informations de l'Association française de lichénologie* 32(2): 5-36.
- Roux, C., 2009. *Naetrocymbe saxicola*, likeno kun *Trentepohlia*. *Bulletin de la Société Linnéenne de Provence* 60: 127-142.
- Roux, C., O. Bricaud, T. Ménard, C. Gueidan, C. Coste & P. Navarro-Rosinés, 2003. Champignons lichénisés et lichénicoles de la France méridionale (Corse comprise): espèces nouvelles et intéressantes (9). *Bulletin de la Société Linnéenne de Provence* 54: 125-141.
- Sérusiaux, E., A. M. Brand, J. Motiejunaite, A. Orange & B. J. Coppins (2010) *Lecidea doliformis* belongs to *Micarea*, *Catillaria alba* to *Biatora*, and *Biatora ligni-mollis* occurs in Western Europe. *Bryologist* 113: 333-344.
- Sérusiaux, E., P. Diederich, A. M. Brand & P. P. G. van den Boom (1999) New or interesting lichens and lichenicolous fungi from Belgium and Luxembourg. VIII. *Lejeunia*, N. S. 162: 1-95.
- Sérusiaux, E., P. Diederich, D. Ertz & P. van den Boom, 2003. New or interesting lichens and lichenicolous fungi from Belgium, Luxembourg and northern France. IX. *Lejeunia*, N. S. 173: 1-48.
- Sérusiaux, E., P. Diederich, D. Ertz, M. Brand & P. van den Boom, 2006. New or interesting lichens and lichenicolous fungi from Belgium, Luxembourg and northern France. X. *Bulletin de la Société des naturalistes luxembourgeois* 107: 63-74.
- Sparrius, L. B., P. Diederich, J. Signoret & E. Sérusiaux (2002) The lichen flora of the Boulonnais (France, Pas-de-Calais). *Belgian Journal of Botany* 135: 50-75.
- Spier, L. & A. Aptroot, 2007. *Cladonia rei* is a chemotype and synonym of *Cladonia subulata*. *Lichenologist* 39: 57-60.
- Stieperaere, H. & D. Van den Broeck, 2009. Twintig jaar later: de mossen en lichenen van Serskamp en omgeving (Wichelen en Lede, Oost-Vlaanderen). De VWBL excursie van 18 juni 2008. *Muscillanea* 29: 4-12.
- Timdal, E., 2010. *Porpidinia* (Porpidiaceae), a new genus for *Toninia tumidula*. *Bibliotheca Lichenologica* 104: 333-337.
- Tønsberg, T., 1992. The sorediate and isidiate, corticolous, crustose lichens in Norway. *Sommerfeltia* 14: 1-331.
- Triebel, D. 1989. Lecideicole Ascomyceten. Eine Revision der obligat lichenicolen Ascomyceten auf lecideoiden Flechten. *Bibliotheca Lichenologica* 35: 278 pp.
- van den Boom, P., M. Brand, P. Diederich, A. Aptroot & E. Sérusiaux, 1994. Report of a lichenological field meeting in Luxembourg. *Bulletin de la Société des naturalistes luxembourgeois* 95: 145-176.
- van den Boom, P., P. Diederich & E. Sérusiaux, 1996. Lichens et champignons lichénicoles nouveaux ou intéressants pour la flore de la Belgique et des régions voisines. VII. *Bulletin de la Société des naturalistes luxembourgeois* 97: 81-92.

- van den Boom, P. & B. van den Boom, 2006. An inventory of lichens and lichenicolous fungi in northern Belgium (area of Stramprooierbroek). *Bulletin de la Société des naturalistes luxembourgeois* 106: 39-52.
- Van den Broeck, D., 2009a. De excursie van de VWBL naar kerken en kerkhoven bij Mol (6 december 2008). *Muscillanea* 29: 34-39.
- Van den Broeck, D., 2009b. Verslag van een lichenologische excursie van de VWBL naar Balen en Meerhout (Prov. Antwerpen). *Muscillanea* 29: 40-45.
- Van den Broeck, D., A. Aptroot, D. Jordaens & D. Ertz, 2009. Verslag van de lichenologische driedaagse naar De Panne en omgeving (27-29 juni 2008). *Muscillanea* 29: 13-29.
- Van den Broeck, D. & K. Hellemans, 2009. Een lichenologische excursie naar Tongerlo (Westerlo, Prov. Antwerpen). *Muscillanea* 29: 46-54.
- Vouaux, L. 1913. Synopsis des champignons parasites de Lichens (suite). *Bulletin de la Société mycologique de France* 29: 33-128, 399-444, 447-494.
- Zhurbenko, M. P. & P. Diederich, 2008. *Stigmidium cladoniicola*, a new lichenicolous fungus from northern Ural, Russia. *Graphis Scripta* 20: 13-18.