

BROMELIAD SOCIETY OF BROWARD COUNTY
SCURF
FEBRUARY 2015

www.bromeliadsocietybc.com/



Guzmania 'Orange Crush'

Vivid orange anthesis. Inflorescence sessile with petals and calyx that are white.

2014 OFFICERS, DIRECTORS, AND CHAIRPERSONS

BROMELIAD SOCIETY OF BROWARD COUNTY
P.O. Box 17272
Plantation, FL 33318

Officers:

President	Charlene "Becky" Blackwood	954-791-8017
Vice President	Larry Davis	954-434-8466
Treasurer-Interim	Carol Mordas	954-587-6036
Recording Secretary	Vacant	
Corresponding Secretary	Gayle Spinell-Gellers	954-478-0367

Directors:

3 year	Bruce Zaret	bruce4art@aol.com
2 year	Suzee Newman	954-583-4277
1 year	Shirley Konefal	954-922-5582

Committee Chairpersons:

Country Store	Bill David	954-321-9229
Librarian	Tracy Moulton	954-864-9776
Membership	Carol Mordas	954-587-6036
	Marcia David	954-321-9229
	Gloria Chernoff	954-327-8516
Photographer	Bill David	954-321-9229
Plant Sale Table	Bill David	954-321-9229
Publicity	Sara Donayre	964-925-5112
Raffle/Ticket Sales	Suzee Newman	954-583-4277
Refreshments	Harriet Abo	954-434-8466

Our meetings generally offer a speaker on timely and noteworthy topics, member plant sales, a plant raffle, special holiday plant auctions, diagnosis of disease and pest problems, and a Country Store with selected bromeliad and gardening supplies.

We meet the third Monday of every month except January and February.

Affiliations: BSBC supports



THE PRESIDENT'S MESSAGE

First, I want to extend our condolences to the family of Nat DeLeon, one of our founding members, who recently passed away after his wife passed away in December. Nat and his wife Eileen were instrumental in the education and growth of the bromeliad industry in South Florida and throughout the world. They will be sorely missed.



If you missed our January meeting because of the change in our meeting day due to a Federal holiday; just a reminder - February's meeting, too, will be changed to Thursday, February 19, 2015, due to President's Day. After our February meeting, we will be back to our regular schedule of meeting the 3rd Monday of each month.

Those of you who did attend January's meeting noticed we increased our Country Store offerings – we now have pre-mixed bags of bromeliad soil with perlite, sets of 3 different sizes of tweezers, 10" and 6" pots, gauntlet gloves, and 5" plant tags. We also have some extra polo shirts with our Society's logo in small, medium and extra-large sizes for a reasonable price of \$11.95. At our February meeting, we will be adding ink pens specifically made for writing the names of your plants on name tags. This writing will not fade or erase. I am looking into providing 4" pots for tillandsias and smaller plants, bags of balanced fertilizer, hats with SPF for gardening and carryalls to carry your bromeliads. If you have any suggestions that would make your bromeliad growing easier, let me know and we will make an effort to provide it for you.

Beginning at our February meeting— for those of you who want some unusual bromeliads to add to your collection, we will be increasing the number of those offered by Silent Auction. Come prepared to bid if you see something unusual you want to have.

Larry Davis, our Vice President, will be presenting our slate of 2015-2016 Officers and Board members at our February general meeting, too. Members may nominate candidates from the floor (with the candidates' consent).

Ann Schandelmayer did a presentation at our January meeting on home decorating with her own vases and bromeliads. Ann informed us on how to keep our bromeliads alive and well inside with tips on how to safely keep them watered. She will be giving us short presentations on decorating tips at the next few meetings. Bromeliads are not just for outside but provide beautiful accents to our interiors.

MARCH 7, 2015 - I want to remind you again of our scheduled tour to Tropiflora Nursery in Sarasota, the largest commercial bromeliad nursery in the United States. The nursery has other types of plants you may be interested in. You can go on their website to see their unusual plants to add to your collection. Tropiflora will have it or help you get it. Dennis Cathcart, the owner, has offered to

sell his plants to us at a reduced costs from his retail prices. He will also provide lunch with deli sandwiches. In the past, Dennis has also provided plants for drawings for our trip back to Fort Lauderdale. I have researched the transportation costs and find the best deal is \$30 per person for a bus that seats 30-39 people with room in the luggage bay for your plant purchases. We will leave early and return early (between 7:00 pm and 8:00 pm). Presently, I have 15 members scheduled to ride the bus. I need a minimum of 15 more to commit to schedule a bus. If we are unable to reach that goal, other arrangements will have to be made such as members driving their own vehicles or renting vans which will include rental, insurance, road side assistance, gas and tolls and limited space to put plants. So let me know as soon as possible at cblackwood@bellsouth.net I am also reaching out to other garden clubs and societies to fill the vacancies. A sign-up sheet will be available at next Thursday's meeting.

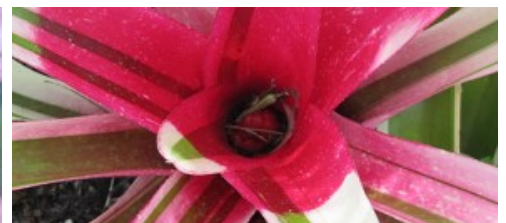
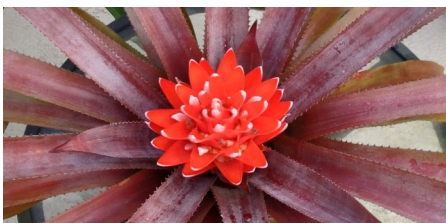
MARCH 14 -15, 2015 - We will have a 10' x 20' booth at the Tropical Plant Affair presented by The Equality Park Garden Club. All of our members are encouraged to come and sell their plants. Our plant sales have been very successful for our members – some selling over \$300 at each of these events. You can buy your supplies at our Country Store. I will be passing out information on set-up and sale times at our Thursday meeting and sending out e-mails to those members who are unable to make the meeting.

APRIL 11 – 12, 2015 – We will have a 10' booth at the Westfield Mall across from Kay Jewelers to sell our members' bromeliads. There will be no other booth in our area so we can handle quite a few plants for sale. We will pass around a sign-up sheet at our March meeting with set up and take down instructions.

Cudos to Ann Schandelmayer who spoke about Bromeliads to the Pompano Beach Garden Club; Bill David who sold the club bromeliads, and to Larry Davis who spoke to the Parkland Garden Club about growing bromeliads and sold plants to its members. Gayle Spinell-Gellers is preparing a bromeliad presentation for the Gateway Christian School elementary students for May. We are preparing a speakers roster of our knowledgeable members. If you know an organization that wants to know more about bromeliads, let me know. We are here to educate our next generation about our passion – bromeliads.

Remember to protect your plants in these next few weeks with the predicted cold fronts coming through. See you Thursday.

Becky





IN MEMORY OF NAT DELEON

THE BROMELIAD SOCIETY OF SOUTH FLORIDA
PAID TRIBUTE TO
NAT DELEON
ON
TUESDAY, FEB. 3, 2015

THE FEBRUARY ISSUE OF THEIR NEWSLETTER
BROMELI ADVISORY CONTAINS
REMEMBRANCES AND ANECDOTES
ABOUT HIS MANY CONTRIBUTIONS.
IT MAKES FOR INSPIRING READING AND MAY BE
FOUND IN ITS ENTIRETY AT
<http://www.bssf-miami.org/BromeliAdvisory.htm>

It will be our privilege to forward you a copy once permission to do so is granted.

BSBC VICE-PRESIDENT RAMBLINGS



Hi, Gang - - Hope you all liked my new friend, Ethel - - she's so pretty - - but kind of mouthy.

A change you are going to see at our meeting - - some people have been complaining about not hearing from the rear of the hall - - so when we don't have a slide talk, we are going to use a horse-shoe type of seating similar to the seating when we presented the basic bromeliad talk and with Mike Michalski's talk on hybridizing. We may have to move the raffle table against the wall to fit it all together.

This month's program is a visit from Jay Thurrott talking about a new approach to raising thousands of bromeliads - - Jay is the current President of the Bromeliad Society International and the past President of the Florida Council of Bromeliad Societies - - he has been past president of 18 local plant clubs in the Port Orange area - - well, maybe not 18, but quite a few - - He is a qualified BSI Judge - - and a thoroughly stimulating speaker.

Our member sales table will be open, so bring along some of your bromeliads to sell. If this is your first time, put your plants in individual plastic bags (like Publix bags), get to the meeting at 6:30, get a seller number from Carol when you sign in, look me or Shirley up and we'll get you set with the tags and stickers. In some clubs everybody sells their own plants. We are different - - all people selling are responsible for selling all the plants on the table and all sellers are expected to spend some time selling.

Next month Mike and Lynn Thompson will let you know how to combine a vacation in Hawaii with a fantastic array of bromeliads. Their slide show will get you to call your travel agent for prices. They will not be selling in March.

Max Rivenbark of Mac's Orchids, tentatively scheduled for April, has been rescheduled for May.

Larry

Upcoming Events –

February – Elections

March - Equality Park Garden Club Plant Sale – Participating vendor

April - Westfield Mall Plant Sale – Participating vendor

May - Plantation Historical Society Plant Sale at Heritage Park – Participating Vendor

Upcoming Garden Tours – Bus trip to Tropiflora in Sarasota

Josefa Leon's Sunshine Bromeliads

Larry Searle's Garden

MEMBERSHIP NEWS

F
E
B



Patricia Barnes
Elizabeth Campbell
Bob Clapp
Lawrence Davis

Eleanor Grupico
Larry Searle
Steve Weisberg

Welcome new members:

Andrew Montone of Ft. Lauderdale and James Marcus of Wilton Manors

NEXT MEETING..... NOTE CHANGE OF DATE

Due to President's Day, our next meeting will be **Thursday, February 19, 2015**
6:30 pm at Deicke Auditorium

Welcome members of **Shade Brigade!** We are glad you could join us for a shared meeting.

BSBC is excited to welcome **BSI President Jay Thurrott** as our speaker. Jay has been growing bromeliads since the 70's and has over 700 varieties in his own collection in Port Orange. He has been a keynote speaker at various bromeliad conferences and has held an array of high level positions in local, state and national organizations. Jay will present

"How to Raise Bromeliads from Seeds"

(Those of us who have tried to do so have found it to be a fun challenge. This is a meeting you definitely don't want to miss!)

**The Sales Table will be open..... Special plants for auction.....Raffle Table
Country Store.....Elections!!!!**

Info Fun Friendship Plants Food

Time to renew your membership!!!

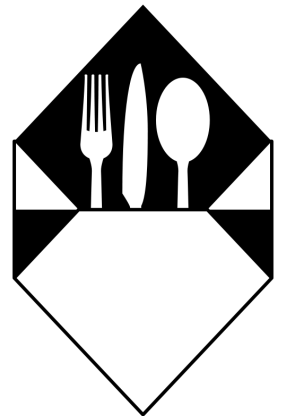
HARRIET'S HOOTS

Greetings To All - - Well, it's February – wow, didn't January go fast? Times is flying by and guess what is coming up.... Valentine's Day. It is on Saturday, February 14th (just a little hint for those who need it – hahaha) so, in advance, happy "love" day to everyone.

Last meeting we had two speakers, Joe and Jeff from the Palm Beaches Bromeliad Society. Wow, we're stepping up, imagine two speakers. They were great, but I heard that our VP gave a special introduction. You all got to meet his "new friend Ethel" Wasn't she sweet with her red fluffy boa around her neck? I bet you never knew that our VP (Larry Davis) was an accomplished ventriloquist. Wasn't he fabulous? You didn't even see his lips move! I'm sorry that I missed it – must have been in the kitchen, but I heard all about it (LOL). Remember the famous saying.... "All you got to know is.....everything is Showbiz."

Well, enough about our entertainment as I must thank our following members for their contributions, and they are.....

Susan Gutman - Baby Bell cheese and crackers (just loved it)
Carol Mordas - - Chocolate Cake (delicious)
Shirley Konefal – Chicken Salad on Toast w/olives (mm-good)
Harry Sperling - Eggnog Rum Cake (wow – fabulous as always)
Susan Mather – Cupcakes – Red & Pink (a valentine special)
Eddie Yi – Asian Slaw, Hummus/Chips & Oatmeal Cookies (Great)
Valeria Paz - - Bowl of Rice (very tasty)
Kathleen Mackey- Black/White Cookies & Veggie Platter (delish)
Lu Webber - - Cream Puffs (very tasty – just loved them)



Great going, gang - - keep it up as I'm sure that we all love the special goodies that are put on the refreshment table. Opps, I mean our buffet table. Remember, due President's Day, our next meeting will be on Thursday, February 19th.

So, until then, I bid you farewell.

HUGS - - -

Harriet

FROM OUR EDUCATION CHAIR

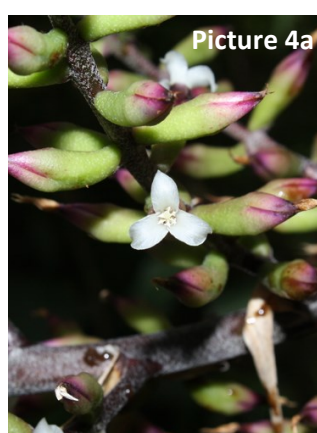


Aechmea lingulatooides

by Bruce S. Zaret

On a recent visit to Lee Magnuson's garden, he asked me to help him identify this medium-large sized plant (Picture 1) which carries an impressive branched inflorescence with multiple white flowers. After a bit of research, I was able to identify the specimen as *Aechmea lingulatooides*. *Aechmea lingulatooides* was discovered in 1996 by Luther, Leme, Benzig and Nahaum in Bahia, Brazil. *Aechmea lingulatooides* was first reported by Leme and Luther in 1998 in the *Selby botanical journal* [*Selbyana* 19(2):183-190]. The plant manifests a 30x30 inch stiff-leaved open rosette with yellowish green leaves, tipped with spines. It has long thick stolons. It requires low-medium light and moisture. It is

similar, yet distinct, from *Aechmea lingulata* and the *lingulata* complex which are described in detail in the chart on the next page.



Aechmea lingulatooides is a North America winter bloomer. There appears to be an evolution in the complexity of the inflorescence amongst these species with *lingulata* having a shorter and less branched raceme and a progressive number of branches and branch length with *lingulatooides* and *patentissima* respectively. In addition, there is some geographic diversity amongst these species and the *lingulatooides* is mostly terrestrial, the *patentissima* is primarily saxicolous and the *lingulata* is more habitat diverse. *Aechmea lingulata* was one of the very first bromeliads described scientifically; *Aechmea lingulatooides* is a relative newcomer only having been described less than 20 years ago.

	Year/	Source	Altitude	Plant	Inflorescence	Calyx	Corolla
<i>Aechmea lingulatooides</i> [picture 1, 1a]	1998 E. Leme and H. Luther	Brazil	Catinga, dry forest	Large; Terrestrial, rarely Epi- phytic;	Green, simple raceme with moderate # of moderate length straight branches	White	White
<i>Aechmea lingulata</i> [picture 2, 2a]	1753	Caribbean, Costa Rica, Northern SA to Brazil	0-1050 meter	Medium-large to large; Epi- phytic, terres- trial, saxico- lous; leaves tongue or strap-shaped	Green, simple raceme with small # of non- complex short branches	White	White
<i>Aechmea patentissima</i> (<i>Aech lingulata</i> v. <i>patentissima</i>) [picture 3,3a]	1830	Brazil (Bahia)		Medium; Sax- icolous	Large pannicu- lar raceme with moder- ate length mul- tiple "spreading branches"	White top with shad- ing to light green bottom	White sepal, yellow sta- men, yellow pistal
<i>Aechmea froesii</i> (<i>Aech lingulata</i> v. <i>froesii</i>) [picture 4, 4a, 4b- see ref below]	1955 Froes	Brazil (Bahia)		Medium; Epi- phytic	Brown-red; straight brach- es off single rachus	Green with pink tips	White sepals, white stamen, white pistals

Pictures 1, 1a Courtesy of Lee Magnuson

Picture 2 <http://tinyurl.com/k3fpobk>

Picture 2a <http://tinyurl.com/p9xhrtb>

Picture 3 [http://commons.wikimedia.org/wiki/File:Aechmea_patentissima_Baker_\(6311962745\).jpg](http://commons.wikimedia.org/wiki/File:Aechmea_patentissima_Baker_(6311962745).jpg)

Picture 3a [http://commons.wikimedia.org/wiki/File:Aechmea_patentissima_Baker_\(6312422477\).jpg](http://commons.wikimedia.org/wiki/File:Aechmea_patentissima_Baker_(6312422477).jpg)

Picture 4 <http://fm2.fieldmuseum.org/plantguides/jpgs/BROM-Aechmea-froesii-bra-PLei50.jpg>

Picture 4a <http://fm2.fieldmuseum.org/plantguides/jpgs/BROM-Aechmea-froesii-bra-PLei51.jpg>

Picture 4b <http://fm2.fieldmuseum.org/plantguides/jpgs?BROM-Aechmea-froesii-bra-PLei52.jpg>

FROM THE EDITOR

Happy update from the front lines of growing Puya alpestris seeds. They live! The seeds I gave Harry Sperling back in the fall have been grown outdoors in the sterilized soil mixture he uses for all his bromeliads. Five little starry plants have emerged. He put the little sprouts in a brom potting mix in fiber pots which can be directly planted in larger pots or the ground. Harry used a plastic container to retain heat and moisture and watered with a light fertilizer to foster growth. The seeds at my house are now being grown indoors as we apparently have a four legged nighttime prowler who likes to create havoc in my outdoor plant nursery by literally ripping seedlings out of their pots and scattering the plants everywhere. It looks doubtful that my one and only baby mango tree will survive because of said perp.... Hence, the baby puya plants were moved to safety indoors to a window setting with good light. Harry's plants are short and stocky, mine are a bit bigger but thinner. As these plants are known to be slow growers, the next update may be a while in coming.



Harry's puya



Mine

Speaking of Harry, a video of his lovely plant collection is now immortalized on our website along with videos from the gardens of Tracy Mouton, Gloria Chernoff, Larry Davis and Harriet Abo, and Ann Schandelmayer. Between Harry's green thumb and his idyllic growing conditions, plants of all sorts just thrive.

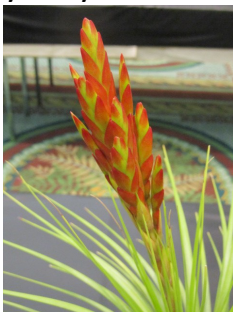
Looking for something new for your tillandsias? Click on <http://shop.floragrubb.com/aeriums/> You may also have noticed something else new.... We are using a different font for the SCURF. New year, new font. In addition, we are announcing a 2015 initiative aimed at helping you build your brom collection.... If you are in search of a specific plant for your collection, let us know and we will try to match you up with another member who has that plant or give you a lead where that plant can be obtained. Meanwhile, happy gardening in this terrific weather.



Gayle

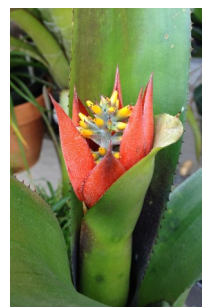
SCURF FEATURE

January Mystery Plant Identified



Tillandsia 'Bird Rock Sparkler'

Win a raffle sheet with 20 tickets....



Be the first to email the editor at yroftiger@aol.com with the correct name of this brom

CALENDAR OF LOCAL PLANT SOCIETY MEETINGS

1st Tuesday	Plantation Orchid Society	Volunteer Park
2nd Friday	Ft. Lauderdale Garden Club	Birch State Park
2nd Monday	BSBC Board Meeting	Deicke Auditorium
2nd Friday	B.U.S.H.	Trinity Church Community Rm
3rd Monday	Bromeliad Society of Broward County	Deicke Auditorium
3rd Tuesday	Bromeliad Society of So. Florida	Fairchild Gardens
3rd Wednesday	Equality Park Garden Club	Pride Center
3rd Wednesday	Plantation Garden Club 9:30 am—noon	El Dorado Community Center
3rd Thursday	Bromeliad Society of the Palm Beaches	Mounts Botanical
3rd Thursday	Shade Brigade (no meetings July & Aug.)	Plantation Bldg. Dept.

PLACES TO GO, THINGS TO SEE

Sat., Feb. 21	Mystery Garden Tour	Ft. Lauderdale Garden Club
Sat., Mar. 14 & Sun, Mar. 15	Spring Plant Sale at Leu Gardens	1920 N. Forest Ave., Orlando, FL
March 13-15	Tropical Plant Affair	Equality Park Garden, Wilton Manors, FL
Fri., Mar. 27 - Sun., Mar. 29	Tropiflora's Spring Festival 8-5, 8-5, 10-3	3530 Tallevast Road, Sarasota, FL
Sat. Mar. 28 & Sun. Mar. 29	Garden Expo 9-5, 9-4	Volunteer Park, Plantation, FL
April 2015	Westfield Mall Plant Sale	Westfield Mall 8000 W. Broward Blvd, Plantation, FL
Sept. 25, 2015	Bromeliads in the Magic City	Double Tree Hotel 711 NW 72 St., Miami

BUSINESS

Advertise here.....

\$ 10 a month

Advertise on our website....

\$ 60 a year



THE NATURE COLLECTION
 Bromeliads & Driftwood Art
SHIRLEY & RICHARD KONEFAL
www.thenaturecollection.com
grillskonefal@aol.com
 954-922-5582