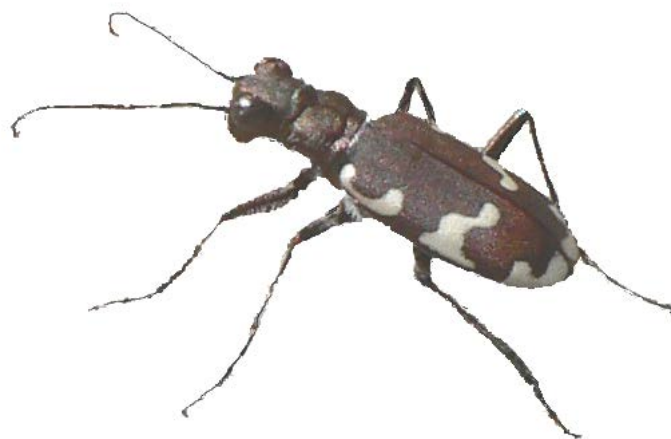


A CHECKLIST OF CUMBRIAN BEETLES



DAVID B. ATTY

July 2016

A Checklist of Cumbrian Beetles

David B. Atty

July 2016

Carlisle Natural History Society
c/o Tullie House Museum, Castle Street, Carlisle CA3 8TP
Tel. 01228 618736; Fax. 01228 810249
Email: info@carlisenats.org.uk
Web: <http://www.carlisenats.org.uk>
<http://www.lakelandwildlife.co.uk>

Sources

1. The earliest beetle records we have, apart from Wordsworth's glow-worms in 1802, date back to T.C.Heysham in the 1830s. But systematic recording, for Cumberland, V.C.70, was initiated by F.H.Day of Carlisle, in five papers published in the *Transactions of Carlisle N.H.S.* in 1909 to 1933. Day's large beetle collection is housed in Tullie House Museum. He added a bare list of Westmorland species, mainly Britten's, in *Naturalist* 1918-1919. The Cumberland total rose from 500 species in 1897 to 1630 in 1908 and 1797 by 1923. Innumerable notes by Day in *E.M.M.*, *Naturalist* and *Ent. Record* increased that to 1855 by 1943. Day's main co-worker, H.Britten of Great Salkeld, contributed many records, of Staphylinidae and Ptiliidae especially, before he left the county in 1912. Apart from a long article in *Ent.Record* 1907 (and *E.M.M.*1909) most of his data have been gathered from specimens in Manchester Museum.
2. R.W.J.Read of Hensingham concentrated on Curculionidae and Chrysomelidae at first, adding numerous species to the county list. (Articles in *BENHS Transactions* 1982, *Coleopterist's Newsletter* 1988 and 1989.) Since then he has worked on most other families with many notes in various entomological journals.
3. D.B.Atty retired from Gloucestershire to Embleton in 1988, and has now recorded 1527 species in Cumbria. Some of the more interesting finds were published in *Ent.Record* 1996, *Coleopterist* 2009 and *Carlisle Naturalist* 2010.
4. Many other coleopterists have contributed records since 1955. They include W.F.Davidson, L.S. Kelly, R.B. Angus, D.Bilton, R.S.Key, L.J.Bauer, K. N.A.Alexander, G.N.Foster, M.Sinclair, J.Thomas and S.M.Hewitt. Some of their records are to be found in the various journals, but most were communicated directly. The total for Cumbria as a whole now stands at 2313 species (about 2196 in V.C. 70 Cumberland and 1644 in V.C. 69 Westmorland and North Lancashire), though 415 of these have not been seen recently – post-1985.
5. My special thanks are due to Stephen Hewitt, Curator of Natural Sciences at Tullie House: without his enthusiasm and digital expertise there would be no checklist, only *Rudis indigestaque moles*.

Frequency codes

The column headed "Frequency" gives some indication of the commonness or otherwise within Cumbria. It is based on the actual number of records for each species since 1985, preferably in different locations, in categories numbered as follows:

- 0 Any records were before 1986
- 1 Only one record since 1985
- 2 Very few records since 1985 (2 to 4 or 5)
- 3 Few records (5 to 10)
- 4 10 to 20 records
- 5 20 to 40 records
- 6 40 to 60 records
- 7 More than 60 records.

No allowances have been made for restricted distribution (sea-shore only) or specialised habitat (mammals' nests) or difficult genera, so there is no simple correlation with the loose terminology of "common" or "local" (though category 0 might be labelled "very rare" and 7 "abundant"). However, the categories should, I hope, be broadly comparable within a family or large genus but not between families (e.g. Carabidae v. Cryptophagidae), and for Cumbria only. English Nature's national ratings (local - Notable - Red Data) are not quoted in this checklist. They relate more to distribution over the U.K. and are barely ever relevant to a border county like Cumbria.

Entries in italics are considered dubious Cumbrian species either because they are known imports or introductions or because records are considered to require confirmation

Species	Cumbria latest year	VC 70 Cumberland		VC 69 Westmorland		Frequency
		first year	last year	first year	last year	
CARABIDAE						
<i>Cicindela campestris</i>	2011	1897	2011	1918	<i>2005</i>	4
<i>Cicindela hybrida</i>	2014	1909	2014			3
<i>Cychrus caraboides</i>	2012	1897	2010	1905	2012	4
<i>Carabus arvensis</i>	2010	1835	2010	1899	2005	3
<i>Carabus glabratus</i>	1995	1835	1995	1880	1984	3
<i>Carabus granulatus</i>	2009	1898	2009	1961	2006	3
<i>Carabus nemoralis</i>	2004	1897	2004	1952	2004	3
<i>Carabus nitens</i>	2006	1845	2006	1905	2009	3
<i>Carabus problematicus</i>	2014	1835	2013	1899	2014	7
<i>Carabus violaceus</i>	2012	1897	2011	1905	2012	4
<i>Calosoma inquisitor</i>	2002	1907	1993	1919	2002	2
<i>Leistus ferrugineus</i>	2002	1989	2002	1979?	2002	2
<i>Leistus fulvibarbis</i>	2013	1897	2013	1905	2013	5
<i>Leistus montanus</i>	2008	1841	1990?	1970	2008	2
<i>Leistus rufescens</i>	2013	1897	2007	1958	2013	5
<i>Leistus rufomarginatus</i>	2012	1998	2012	2008	2008	2
<i>Leistus spinibarbis</i>	2014	1915	1975?	1979	2014	2
<i>Nebria brevicollis</i>	2014	1897	2014	1905	2014	7
<i>Nebria gyllenhali</i>	2014	1835	2014	1905	2006	6
<i>Nebria nivalis</i>	1986	1980	1986			1
<i>Nebria salina</i>	2013	1913	2012	1959	2013	5
<i>Notiophilus aesthuans</i>	1990	1980	1990	1976	1986	2
<i>Notiophilus aquaticus</i>	2014	1898	2014	1960	2011	6
<i>Notiophilus biguttatus</i>	2013	1897	2013	1905	2012	5
<i>Notiophilus germinyi</i>	2010	1960	2010	1960	2006	5
<i>Notiophilus palustris</i>	2011	1899	2008	1905	2011	4
<i>Notiophilus quadripunctatus</i>	1991	1835	1991			1
<i>Notiophilus rufipes</i>	1996	1835	1996	1958	1981	1
<i>Notiophilus substriatus</i>	2000	1845	2000	1905	1907	1
<i>Blethisa multipunctata</i>	2014	1835	2014			2
<i>Elaphrus cupreus</i>	2008	1897	2008	1905	2007	5
<i>Elaphrus lapponicus</i>	c.1865	c.1865	c.1865			0
<i>Elaphrus riparius</i>	2005	1898	2005	1905	2005	4
<i>Loricera pilicornis</i>	2014	1901	2014	1905	2013	7
<i>Dyschirius angustatus</i>	2002	1848	2002			2
<i>Dyschirius globosus</i>	2002	1835	2002	1905	1986	3
<i>Dyschirius impunctipennis</i>	1996	1898	1996	1960	1960	2
<i>Dyschirius luedersi</i>	1987	1908	1987			1
<i>Dyschirius nitidus</i>	2006	1899	2006	2003	2006	3
<i>Dyschirius politus</i>	2004	1902	2004	1910	1910	3
<i>Dyschirius salinus</i>	2006	1898	2006	1957	1960	3
<i>Dyschirius thoracicus</i>	2005	1910	2005	1959	1959	1
<i>Clivina collaris</i>	2004	1897	2004	1959	1979	3
<i>Clivina fossor</i>	2013	1835	2008	1905	2013	5
<i>Broscus cephalotes</i>	2014	1897	2014	1956	2013	5
<i>Miscodera arctica</i>	2011	1902	1981	1968	2011	2
<i>Patrobus assimilis</i>	2013	1899	2013	1864	2000	4
<i>Patrobus atrorufus</i>	2012	1898	2012	1905	1998	3
<i>Patrobus septentrionis</i>	1992	1859?	1992	1865?	1967	1
<i>Perileptus areolatus</i>	1908			1908	1908	0
<i>Aepus robinii</i>	2014	2014	2014			1

Species	Cumbria latest year	VC 70 Cumberland		VC 69 Westmorland		Frequency
		first year	last year	first year	last year	
Thalassophilus longicornis	1966	1869	1869	1966	1966	0
Trechus fulvus	2012	2012	2012			1
Trechus obtusus	2011	1901	2011	1864	2008	5
Trechus quadristriatus	2007	1897	2007	1905	2004	4
Trechus rubens	2004	1835	2004	1965	1987	2
Trechus secalis	1979	1900	1925	1965	1979	0
Trechus discus	2005	1900	1900	2005	2005	1
Trechus micros	2004	1835	2004	1965	1979	2
Asaphidion curtum	2004	1992	2004			3
Asaphidion flavipes	2004	1993	2004	2003	2003	3
Asaphidion flavipes agg.	1960	1835	1927	1958	1960	0
Asaphidion pallipes	2004	1845	2004			2
Bembidion litorale	2004	1835	2004	1859	2004	3
Bembidion nigricorne	1960	1900	1960			0
Bembidion lampros	2014	1897	2013	1905	2014	5
Bembidion properans	2002	1907	2002			3
Bembidion punctulatum	2007	1835	2007	1987	2004	6
Bembidion bipunctatum	2008	1835	2008	1910	1980	3
Bembidion pallidipenne	2009	1898	2009	1960	1992	2
Bembidion stomoides	2006	1848	2006	1965	1973	2
Bembidion dentellum	2004			2004	2004	1
Bembidion varium	2004	1901	1993	2004	2004	2
Bembidion prasinum	2014	1835	2014	1987	1987	4
Bembidion atrocoeruleum	2014	1835	2007	1905	2014	5
Bembidion geniculatum	2008	1902	2004	2008	2008	2
Bembidion tibiale	2014	1835	2014	1865	2011	7
Bembidion andreae	2004	1845	2004	1999	1999	3
Bembidion bruxellense	2008	1904	2004	1905	2008	3
Bembidion decorum	2007	1835	2007	1905	2004	4
Bembidion femoratum	2004	1835	2004	1960	1960	3
Bembidion fluviatile	1999	1960	1999			1
Bembidion lunatum	2014	1835	2014	1987	1987	3
Bembidion maritimum	1999	1835	1999	1983	1983	1
Bembidion monticola	2012	1898	2012	2004	2008	3
Bembidion nitidulum	2012	1910	2011	1961	2012	4
Bembidion obliquum	2009	2009	2009			1
Bembidion saxatile	2006	1835	2003	2006	2006	2
Bembidion stephensi	2003	1900	2003	1993	1993	2
Bembidion testaceum	2000	1905	2000			1
Bembidion tetracolum	2013	1835	2011	1905	2013	7
Bembidion laterale	2006	1909	2006	2003	2003	3
Bembidion quadrimaculatum	2011	1989	2011	1959	1971	3
Bembidion gilvipes	1928	1928	1928			0
Bembidion schueppeli	2008	1849	2000	1960	2008	2
Bembidion assimile	2005	2005	2005	1993	1993	2
Bembidion clarki	1991	1991	1991			1
Bembidion minimum	2013	1835	2006	1960	2013	3
Bembidion normannum	2011	1901	2011			2
Bembidion genei	2003	1835	2003			2
Bembidion doris	2015	1900	2015	2003	2003	3
Bembidion obtusum	2014	1835	2014	2011	2011	5
Bembidion harpaloides	2014	1835	2013	1904	2014	5
Bembidion quinquestriatum	1999	1901	1999			2
Bembidion aeneum	2013	1835	2011	1968	2013	5
Bembidion biguttatum	2008	1835	2008	1905	1957	3
Bembidion guttula	2014	1835	2014	1905	2008	6

Species	Cumbria latest year	VC 70 Cumberland		VC 69 Westmorland		Frequency
		first year	last year	first year	last year	
Bembidion iricolor	2006	1976	1989	2006	2006	2
Bembidion lunulatum	2005	1908	2005	1960	1992	2
Bembidion mannerheimi	2014	1898	2014	1905	2006	5
Tachys parvulus	2002	2002	2002			2
Pogonus chalceus	2013	1898	2005	1960	2013	3
Stomis pumicatus	1998	1898	1910	1905	1998	1
Pterostichus adstrictus	2013	1898	2006	1899	2013	4
Pterostichus aethiops	2013	1899	2013	1959	2011	4
Pterostichus angustatus	2003	1983	1983	1986	2003	2
Pterostichus anthracinus	1980	1835	1980			0
Pterostichus cristatus	2011	1913	2004	1929	2014	4
Pterostichus cupreus	2007	1835	1999	1905	2007?	2
Pterostichus diligens	2014	1898	2014	1905	2013	7
Pterostichus lepidus	1992	1901	1992			1
Pterostichus madidus	2014	1835	2014	1905	2013	7
Pterostichus melanarius	2013	1897	2013	1905	2011	5
Pterostichus minor	2014	1903	2014	1913	2013	3
Pterostichus niger	2013	1897	2013	1905	2011	6
Pterostichus nigrita agg.	2014	1897	2014	1905	2013	7
Pterostichus oblongopunctatus	2014	1959	2010	1957	2014	3
Pterostichus rhaeticus	2013	1927	2012	1980	2013	4
Pterostichus strenuus	2014	1897	2014	1904	2012	7
Pterostichus vernalis	2014	1898	2014	1905	2007	5
Pterostichus versicolor	2014	1897	2014	1905	2012	4
Abax parallelepipedus	2014	1897	2014	1905	2013	6
Calathus ambiguus	1972	1835	1901	1972	1972	0
Calathus erratus	2007	1835	2007	1958	1980	3
Calathus cinctus	2000	1989	2000	1983	1983	3
Calathus fuscipes	2005	1897	2005	1905	1986	3
Calathus melanocephalus s.s.	2014	1897	2014	1901	2011	6
Calathus micropterus	2010	1899	2010	1913	1986	3
Calathus mollis	2014	1897	2014	1958	2013	4
Calathus piceus	2013	1897	2013	1905	1980	3
Laemostenus complanatus	1960	1943	1960	1960	1960	0
Laemostenus terricola	1925	1901	1925			0
Platyderus ruficollis	2007			1981	2007	1
Synuchus nivalis	2014	1845	2014	1957	1998	3
Olisthopus rotundatus	2013	1835	2013	1905	2002	5
Agonum albipes	2014	1835	2014	1905	2014	7
Agonum assimile	2014	1835	2014	1901	2014	7
Agonum dorsale	2013	1897	2008	1953	2013	3
Agonum ericeti	2015	1980	2015	1965	2007	2
Agonum fuliginosum	2014	1897	2014	1905	2013	6
Agonum gracile	2008	1897	2008	1905	2003	4
Agonum marginatum	2005	1897	2005	1960	2003	5
Agonum micans	2014	1903	2014	1864	1960	4
Agonum moestum	2005	1900	2005			3
Agonum muelleri	2014	1897	2014	1905	2012	7
Agonum nigrum	2004	1913	2004	1980	1980	2
<i>Agonum obscurum</i>	1988	1988	1988	1943	1943	1?
Agonum piceum	2005	1898	2005			3
Agonum quadripunctatum	1957	1835	1835	1957	1957	0
Agonum sexpunctatum	1918	1915	1918			0
Agonum thoreyi	2014	1980	2014	1971	2008	3
Agonum viduum	2014	1907	2014	1967	1971	2
Amara aenea	2014	1898	2014	1905	2013	5

Species	Cumbria latest year	VC 70 Cumberland		VC 69 Westmorland		Frequency
		first year	last year	first year	last year	
Amara anthobia	2008			1905?	2008	1
Amara apricaria	2007	1897	1995	1905	2007	2
Amara aulica	2013	1897	2012	1905	2013	5
Amara bifrons	1996	1898	1996			1
Amara communis	2007	1897	2005	1905	2007	3
Amara consularis	1993	1899	1993			1
Amara convexior	2007	1982	2007	1987	1993	4
Amara equestris	2005	1901	2005			1
Amara eurynota	2013	1899	2004	1958	2013	2
Amara familiaris	2007	1898	2004	1971	2007	4
Amara fulva	2010	1898	2010	1986	2000	3
Amara lucida	2002	1905	2002	1960	1986	2
Amara lunicollis	2010	1898	2010	1905	2006	4
Amara nitida	1998	1959	1998			1
Amara ovata	2014	1897	2014	1905	1995	5
Amara plebeja	2011	1897	2011	1956	2002	4
Amara praetermissa	1996	1985	1996			2
Amara similata	2008	1899	2008			3
Amara spreta	1960			1960	1960	0
Amara tibialis	2003	1901	2003	1959	1993	4
Harpalus rufipes	2013	1897	1999	1913	2013	3
Harpalus punctipes	1965			1965	1965	0
Harpalus rufibarbis	1995	1897	1995			1
Harpalus affinis	2008	1897	2008	1952	1986	3
Harpalus anxius	1909	1909	1909			0
Harpalus honestus	1998	1994	1998			2
Harpalus latus	2012	1897	2012	1905	2007	3
Harpalus neglectus	2004	1909	2004	1958	1958	3
Harpalus rubripes	2007	1903	2006	2007	2007	2
Harpalus tardus	2010	1898	2010	1982	1982	2
Anisodactylus binotatus	2007	1897	2002	1971	2007?	2
Dicheirotichus gustavi	2011	1899	2009	1960	2011	4
Trichocellus cognatus	2014	1897	2014	1959	2001	4
Trichocellus placidus	2014	1899	2014	1960	2004	5
Bradycellus collaris	2010	1900	2010	1885	1960	2
Bradycellus harpalinus	2007	1897	2007	1958	2002	5
Bradycellus ruficollis	2012	1898	2012	1905	2007	5
Bradycellus sharpi	2004	2001	2004	1971	2002	2
Bradycellus verbasci	2001	1897	1990	1958	2001	2
Stenolophus mixtus	2006	2006	2006	1993	1993	2
Acupalpus dubius	2005	1989	2005			3
Acupalpus exiguus	1920	1920	1920			0
Acupalpus meridianus	1956			1956	1956	0
Badister bipustulatus	2006	1828	2006	1905	2007	3
Badister sodalis	1971	1828	1828	1971	1971	0
Chlaenius nigricornis	2009	1848	2009			2
Oodes helopioides	1835	1835	1835			0
Lebia chlorocephala	1993	1897	1993			1
Lebia cruxminor	1930	1899	1930			0
Demetrias atricapillus	2011	1907	2011			3
Dromius agilis	1993	1901	1993			1
Dromius linearis	2010	1897	2010	1905	2010	5
Dromius melanocephalus	2015	1897	2015	1905	1971	3
Dromius meridionalis	2008	1901	2008	1905	2001	3
Dromius notatus	2005	1899	2005	1967	1967	3
Dromius quadrimaculatus	2011	1897	2011	1905	1971	3

Species	Cumbria latest year	VC 70 Cumberland		VC 69 Westmorland		Frequency
		first year	last year	first year	last year	
<i>Dromius quadrinotatus</i>	2005	1901	2005	1905	2001	3
<i>Dromius sigma</i>	1835	1835	1835			0
<i>Metabletus foveatus</i>	2012	1898	2012	1958	1993	4
<i>Cymindis vaporariorum</i>	1988	1899	1988	1982	1982	2
HALIPLIDAE						
<i>Brychius elevatus</i>	2005	1898	2005	1905	1940	2
<i>Halplus apicalis</i>	2010	1924	1983	2010	2010	1
<i>Halplus confinis</i>	2007	1907	2005	1937	2007	2
<i>Halplus flavicollis</i>	2007	1907	2007	1929	1940	3
<i>Halplus fluviatilis</i>	2004	1906	1944	1940	2004	1
<i>Halplus fulvus</i>	2003	1835	2003	1905	1975	2
<i>Halplus heydeni</i>	2003	1937	2003	1935	2001	2
<i>Halplus immaculatus</i>	2004	1903	2004	1939	1939	1
<i>Halplus lineatocollis</i>	2012	1835	2012	1905	2001	4
<i>Halplus lineolatus</i>	2010	1908	2010	1932	2007	2
<i>Halplus obliquus</i>	2003	1845	2003	1905	1905	1
<i>Halplus ruficollis</i>	2014	1898	2014	1905	2007	4
<i>Halplus wehnckeii</i>	2005	1901	2005	1929	1940	2
HYGROBIIDAE						
<i>Hygrobia hermanni</i>	2012	?1990	2012	1999	2006	2
NOTERIDAE						
<i>Noterus clavicornis</i> (=major)	2010	1960	2012	1962	2010	3
DYTISCIDAE						
<i>Laccophilus hyalinus</i>	1985	1835	1985			0
<i>Laccophilus minutus</i>	2013	1898	2013	1940	1955	4
<i>Hyphydrus ovatus</i>	2012	1907	2012	1940	2007	3
<i>Hydroglyphus geminus</i>	2008			2007	2008	2
<i>Hygrotus inaequalis</i>	2012	1835	2012	1940	2007	4
<i>Hygrotus quinquelineatus</i>	1992	1907	1992	1989	1989	3
<i>Hygrotus versicolor</i>	1985			1937	1985	1
<i>Coelambus confluens</i>	2006	1905	2006	1960	2002	2
<i>Coelambus impressopunctatus</i>	2012	1898	2012	1835	1986	3
<i>Coelambus novemlineatus</i>	1994	1907	1994			2
<i>Hydroporus angustatus</i>	2014	1906	2014	1963	2003	3
<i>Hydroporus discretus</i>	2005	1898	2005	1905	2001	2
<i>Hydroporus erythrocephalus</i>	2014	1899	2014	1905	2007	4
<i>Hydroporus ferrugineus</i>	1991	1900	1991	1937	1964	1
<i>Hydroporus gyllenhali</i>	2012	1898	2012	1904	2007	4
<i>Hydroporus incognitus</i>	2013	1902	2013	1937	2004	3
<i>Hydroporus longicornis</i>	2007	1981	2007	1974	1981	2
<i>Hydroporus longulus</i>	2011	1912	2011	1963	1981	3
<i>Hydroporus melanarius</i>	2006	1845	2006	1864	2006	4
<i>Hydroporus memnonius</i>	2012	1898	2012	1835	2008	4
<i>Hydroporus morio</i>	2012	1894	2011	1904	2012	4
<i>Hydroporus nigrita</i>	2014	1845	2014	1905	2014	5
<i>Hydroporus obscurus</i>	2014	1900	2014	1864	2014	4
<i>Hydroporus obsoletus</i>	1995	1902	1992	1963	1995	2
<i>Hydroporus palustris</i>	2013	1898	2013	1900	2003	5
<i>Hydroporus planus</i>	2013	1899	2013	1905	2012	4
<i>Hydroporus pubescens</i>	2013	1899	2013	1904	2001	5
<i>Hydroporus rufifrons</i>	2009	1898	1966	1937	2009	4
<i>Hydroporus scalesianus</i>	2000	1983	2000			1
<i>Hydroporus striola</i>	2013	1900	2013	1937	2005	4
<i>Hydroporus tessellatus</i>	2012	1901	2006	1956	2012	3
<i>Hydroporus tristis</i>	2013	1899	2013	1864	2001	4
<i>Hydroporus umbrosus</i>	2005	1899	2005	1937	2004	3

Species	Cumbria latest year	VC 70 Cumberland		VC 69 Westmorland		Frequency
		first year	last year	first year	last year	
Suphrodytes dorsalis	2007	1983	1983	2007	2007	1
Stictonectes lepidus	2004	1835	2012	1960	1985	3
Graptodytes granularis	2003	1835	2003	1937	1987	2
Graptodytes pictus	2009	1903	2009	1937	2007	2
Porhydrus lineatus	1960	1900	1943	1960	1960	0
Deronectes latus	2005	1855	2005			2
Potamonectes assimilis	2002	1835	2002	1932	1980	2
Nebrioporus elegans depressus	2008	1854	2004	1864	2008	4
Stictotarsus duodecimpustulatus	2003	1835	2003	1864	1981	3
Oreodytes davisii	1997	1900	1997	1865	1939	2
Oreodytes sanmarki	2008	1835	2006	1905	2008	3
Oreodytes septentrionalis	2004	1900	2004	1921	2000	4
Laccornis oblongus	1983			1977	1983	0
Copelatus haemorrhoidalis	2012	1982	2012	1960	1995	2
Platambus maculatus	2015	1898	2015	1905	2008	5
Agabus affinis	2013	1906	2013	1937	2005	3
Agabus arcticus	2014	1894	2014	1931	2013	4
Agabus biguttatus	2003	1961	2003	1980	2002	2
Agabus bipustulatus	2014	1898	2014	1904	2014	7
Agabus chalconatus	2004	1980	2004			2
Agabus congener	2014	1865	2014	1902	1996	4
Agabus conspersus	2000	1901	2000			2
Agabus didymus	1988	1988	1988	1988	1988	2
Agabus guttatus	2012	1835	2012	1865	2007	5
Agabus labiatus	2004	1898	1960	1937	2004	1
Agabus melanarius	2012	1909	2012			1
Agabus melanocornis	2012	1835	2012	1905	1988	4
Agabus nebulosus	2012	1898	2012	1905	1953	2
Agabus paludosus	2005	1901	2005	1905	2002	3
Agabus sturmii	2014	1901	2014	1905	2001	4
Agabus unguicularis	2012	1894	2012	1977	1979	2
Ilybius aenescens	2014	1872	2014	1937	2007	4
Ilybius ater	2014	1898	2014	1937	2007	4
Ilybius fuliginosus	2013	1898	2013	1905	2007	5
Ilybius guttiger	1999	1899	1999	1864	1986	2
Ilybius quadriguttatus	2009	2009	2009	1960	2001	2
Ilybius subaeneus	1964	1964	1964	1960	1963	0
Rhantus suturellus	2015	1900	2015	1937	2014	4
Rhantus exsoletus	2012	1835	2012	1905	2004	2
Rhantus suturalis	1960	1898	2012?			1
Colymbetes fuscus	2012	1835	2012	1905	1987	3
Acilius canaliculatus	2012	1981	2012	1960	1960	2
Acilius sulcatus	2012	1899	2012	1905	2007	3
Dytiscus circumflexus	2004	1984	2004			2
Dytiscus marginalis	2013	1898	2013	1905	1989	4
Dytiscus semisulcatus	2012	1835	2012	1905	1950	2
GYRINIDAE						
Gyrinus aeratus	1963			1963	1963	0
Gyrinus paykulli	1987	1987	1987			1
Gyrinus caspius	2005	1901	2005	1956	1985	2
Gyrinus distinctus	1966	1932	1932	1966	1966	0
Gyrinus marinus	1997	1829	1997	1960	1963	2
Gyrinus minutus	2000	1865	2000	1937?	1964	2
Gyrinus natator	1921	1901	1921	1902	1902	0
Gyrinus substriatus	2014	1899	2014	1905	2013	5
Gyrinus urinator	1960	1947	1947	1944	1960	0

Species	Cumbria latest year	VC 70 Cumberland		VC 69 Westmorland		Frequency
		first year	last year	first year	last year	
Orectochilus villosus	2009	1835	2009	1960	2008	4
SPHAERIIDAE						
Sphaerius acaroides	1938			1938	1938	0
HYDROPHILIDAE						
Georissus crenulatus	2004	1856	2004	2004	2004	3
Hydrochus angustatus	2009	1909	2009			2
Hydrochus brevis	1985	1908	1985			0
Helophorus aequalis	2014	1900	2014	1905	2013	5
Helophorus arvernicus	2009	1898	2004	2004	2009	3
Helophorus brevipalpis	2013	1898	2013	1905	2011	5
Helophorus dorsalis	2013	1914	1915	1964	2013	1
Helophorus flavipes	2014	1898	2013	1905	2014	5
Helophorus fulgidicollis	2007	1902	1993	1954	2007	2
Helophorus grandis	2013	1898	2013	1905	2012	6
Helophorus granularis	1988	1916	1988	1913	1988	2
Helophorus griseus	1985			1964	1985	1
Helophorus minutus	2012	1901	2012	1960	2012	4
Helophorus nanus	c1990			c1990	c1990	1
Helophorus nubilus	1960	1835	1940	1960	1960	0
Helophorus obscurus	2013	1980	2013	1978	2001	4
Helophorus porculus	2013	1835	2013	1961	1961	1
Helophorus strigifrons	2002	2002	2002	1964	1964	1
Helophorus tuberculatus	c.100	c.100	c.100			0
Coelostoma orbiculare	2012	1901	2012	1905	2012	3
Sphaeridium bipustulatum	1992	1835	1992	1905	1987	2
Sphaeridium lunatum	2014	1835	2014	1905	2014	4
Sphaeridium marginatum	2016	2012	2016	2012	2013	3
Sphaeridium scarabaeoides	2014	1901	2011	1905	2014	4
Cercyon analis	2014	1897	2014	1905	2014	6
Cercyon atricapillus	2008	1901	2008			2
Cercyon convexiusculus	1982	1982	1982			0
Cercyon depressus	1936	1936	1936			0
Cercyon haemorrhoidalis	2014	1897	2013	1905	2014	4
Cercyon impressus	2014	1901	2012	1905	2014	4
Cercyon lateralis	2013	1899	2013	1905	2009	4
Cercyon littoralis	2010	1898	2010	1960	1992	3
Cercyon marinus	1993	1993	1993			1
Cercyon melanocephalus	2013	1897	2013	1905	2013	6
Cercyon obsoletus	2011	1899	2010	2011	2011	2
Cercyon pygmaeus	2012	1899	2012	1905	1987	3
Cercyon quisquilius	1971	1898	1917	1905	1971	0
Cercyon terminatus	2016	1901	2016			2
Cercyon tristis	2014	1901	2014	1971	2004	2
Cercyon unipunctatus	1991	1897	1991	1905	1908	1
Cercyon ustulatus	2015	1902	2015	1905	2009	2
Megasternum concinnum	2014	1897	2014	1905	2014	6
Megasternum immaculatum	2014	2014	2014			1
Cryptopleurum minutum	2013	1898	2013	1905	2013	3
Cryptopleurum subtile	2006	2006	2006			1
Paracymus scutellaris	1999	1999	1999			1
Hydrobius fuscipes	2014	1898	2014	1905	2006	4
Anacaena globulus	2014	1898	2014	1905	2010	7
Anacaena limbata agg.	2009?	1901	1977	1905	2009?	1?
Anacaena lutescens	2012	2006	2012	2001	2010	3
<i>Berosus luridus</i>	2012	2012	2012			1
<i>Berosus signaticollis</i>	2012	2012	2013			2

Species	Cumbria latest year	VC 70 Cumberland		VC 69 Westmorland		Frequency
		first year	last year	first year	last year	
Laccobius atratus	2012	1960	2012	2001	2001	2
Laccobius atrocephalus	2000	1964	2000	1963	1963	2
Laccobius biguttatus	2013	1901	2013	1963	1963	2
Laccobius bipunctatus	2007	1898	2007	1905	2001	3
Laccobius minutus	2005	1898	2005	1905	1987	3
Laccobius striatulus	2004	1899	2004	1910	2000	3
Helochares punctatus	2012	1899	2012	1961	2006	3
Enochrus affinis sens. str.	2012	1899	2012	2000	2001	3
Enochrus bicolor	1986			1986	1986	1
Enochrus coarctatus	2009	1904	2009	1960	1986	3
Enochrus ochropterus	2002	1898	2002	2000	2000	2
Enochrus fuscipennis	2014	1901	2007	1910	2014	3
Enochrus testaceus	1993			1960	1993	1
Cymbiodyta marginella	2007	1918	1918	1960	2007	2
Chaetarthria seminulum	2005	1901	2005	1960	2001	2
Chaetarthria simillima	2013	2007	2013	2000?	2000?	2
SPHAERITIDAE						
Sphaerites glabratus	1901	1901	1901			0
HISTERIDAE						
Acritus nigricornis	1907	1905	1907			0
Gnathoncus nannetensis	1910	1899	1910			0
Gnathoncus nanus	1972	1972	1972	1905	1905	0
Saprinus aeneus	2003	1899	2003	1905	1905	2
Saprinus cuspidatus	1995	1935	1935	1983	1995	2
Saprinus semistriatus	2006	1897	2003	1905	2006	2
Hypocaccus rugiceps	2000	1909	2000	1964	1995	3
Baeckmanniolus dimidiatus	2013	1899	2006	1960	2013	3
Carcinops pumilio	2013	1909	2005	2009	2013	2
Onthophilus striatus	1987	1899	1944	1905	1987	1
Hister bisexstriatus	1907	1907	1907			0
Hister impressus	2013	1897	1990	1905	2013	2
Hister striola	2015	1897	2015	1905	1971	2
Hister unicolor	2014	1899	2004	1960	2014	3
Paralister carbonarius	2013	1899	2013	1905	2006	3
Paralister neglectus	2000	1899	2000	1905	1989	2
Paralister purpurascens	1963	1835	1835	1963	1963	0
Atholus duodecimstriatus	1960	1907	1960			0
Grammostethus marginatus	1954	1913	1954			0
Peranus bimaculatus	1920	1901	1920	1905	1905	0
HYDRAENIDAE						
Ochthebius auriculatus	1999	1902	1999	1956	1963	2
Ochthebius bicolon	2005	1898	2005			2
Ochthebius dilatatus	1987	1898	1987	1960	1985	2
Ochthebius exsculptus	1995	1900	1980	1905	1995	1
Ochthebius marinus	2003	1900	2003	1960	1985	2
Ochthebius minimus	2009	1908	2009	2007	2007	2
Ochthebius punctatus	1964	1964	1964			0
Ochthebius lejolisii	2012	1987	2012			2
Ochthebius viridis	1944	1910	1944			0
Hydraena britteni	2005	1904	2005	1960	1978	2
Hydraena gracilis	2008	1900	2005	1865	2008	2
Hydraena minutissima	1986	1905	1986			1
Hydraena nigrita	2000	1835	2000	1960	1960	1
Hydraena pulchella	1995	1983	1995			1
Hydraena pygmaea	1982	1982	1982			0
Hydraena riparia	2007	1899	2007	1905	2004	3

Species	Cumbria latest year	VC 70 Cumberland		VC 69 Westmorland		Frequency
		first year	last year	first year	last year	
Hydraena rufipes	1999	1905	1999	1996	1996	2
Hydraena testacea	1964	1910	1910	1964	1964	0
Limnebius nitidus	2005	1903	2005			2
Limnebius truncatellus	2009	1898	2009	1905	2007	5
PTILIIDAE						
Ptenidium formicetorum	2001	2001	2001			1
Ptenidium fuscicorne	2006	1905	2006			1
Ptenidium intermedium	2000	2000	2000			1
Ptenidium laevigatum	2014	1905	2014			2
Ptenidium longicorne	1909	1903	1909			0
Ptenidium nitidum	2013	1901	2012	1905	2013	3
Ptenidium punctatum	1987	1905	1987			1
Ptenidium pusillum	2014	1901	2014	1905	2014	5
Oligella foveolata	1913	1913	1913			0
Ptilium horioni	1913	1913	1913			0
Ptiliola kunzei	2008	1901	2008	1905	1907	1
Ptiliolium fuscum	2010	1913	2010			1
Ptiliolium schwarzi	1913	1913	1913			0
Ptiliolium spencei				2013	2013	1
Ptinella aptera	1907	1904	1907			0
Ptinella cavelli	2012	2008	2008	1989	2012	3
Ptinella errabunda	2008	2008	2008	2008	2008	2
Pteryx suturalis	1912	1905	1912			0
Nephanes titan	2013	1905	1905	2013	2013	1
Acrotrichis arnoldi	c.1966	c.1966	c.1966			0
Acrotrichis atomaria	2015	1905	2015	1905	2013	3
Acrotrichis brevipennis	1907	1906	1907			0
Acrotrichis cognata	1997	1997	1997			1
Acrotrichis danica	2012	1901	2012	1905	1913	2
Acrotrichis dispar	1907	1905	1907	1905	1905	0
Acrotrichis fascicularis	2013	1901	2013	1905	1971	3
Acrotrichis grandicollis	2014	1901	2013	1905	1914	2
Acrotrichis henrici	1987	1987	1987			1
Acrotrichis lucidula	1967			1967	1967	0
Acrotrichis intermedia	2013	1901	2013	1905	1971	2
Acrotrichis montandoni	2013	1905	2011	1966	2013	2
Acrotrichis sericans	1907	1905	1907	1905	1905	0
Acrotrichis sitkaensis	2008	1913	2008			1
Acrotrichis thoracica	1966			1966	1966	0
LEPTINIDAE						
Leptinus testaceus	2006	2004	2006	1866	2002	2
LEIODIDAE						
Triarthron maerkeli	1911	1880	1911			0
Hydnobius punctatus	2008	1903	2008			1
Hydnobius spinipes	1991	1991	1991	1991	1991	2
Leiodes badia	1971			1971	1971	0
Leiodes calcarata	2013	1903	2008	1905	2013	3
Leiodes cinnamomea	1922	1922	1922			0
Leiodes furva	1998	1998	1998			1
Leiodes litura	1998	1905	1905	1913	1998	1
Leiodes longipes	1960	1905	1960			0
Leiodes lunicollis	1995?	1995?	1995?			1
<i>Leiodes obesa</i>	2007	1910	2007			2
Leiodes ferruginea	1992	1901	1992	1971	1985	1
Leiodes rufipennis	1994	1901	1994	1910	1960	2
Leiodes rugosa	1845	1835	1845			0

Species	Cumbria latest year	VC 70 Cumberland		VC 69 Westmorland		Frequency
		first year	last year	first year	last year	
Leiodes strigipenne	1913			1913	1913	0
Leiodes triepkii	1908	1907	1908			0
Liocyrtusa minuta	2008	2008	2008			1
Colenis immunda	1971	1903	1971	1905	1905	0
Anisotoma glabra	1996	1829?	1996			1
Anisotoma humeralis	2013	1899	2011	1918	2013	3
Anisotoma orbicularis	2008	1916	1942	2008	2008	1
Amphicyllis globus	2012	2012	2012			1
Agathidium atrum	1845	1845	1845			0
Agathidium convexum	1906	1906	1906			0
Agathidium laevigatum	2004	1907	2004	1905	1905	1
Agathidium marginatum	2004	1905	2004			2
Agathidium nigrinum	1988	1845	1903	1904	1988	1
Agathidium nigripenne	2012	1901	2010	2010	2012	3
Agathidium pisanum	1991			1903	1991	2
Agathidium rotundatum	1994	1901	1994	1971	1971	2
Agathidium seminulum	2002	1899	1907	1904	2002	2
Agathidium varians	2007	1898	2007	1905	1905	1
Ptomaphagus medius	1941	1899	1941			0
Ptomaphagus subvillosus	2013	1897	2000	1905	2013	2
Nargus anisotomoides	2006	1903	2006	1913	1998	2
Nargus velox	2007	1898	2006	1905	2007	2
Nargus wilkini	2013	1899	2013			2
Choleva agilis	1960	1898	1910	1905	1960	0
Choleva angustata	1907	1901	1907			0
Chovela fagniezi	1960	1897	1960			0
Choleva jeanneli	2005	1901	2005	1972	1972	1
Choleva oblonga	2009	1901	2009			2
Choleva spadicea	1905	1897	1905			0
Sciodrepoides fumatus	2011	1899	2011	1905	1971	2
Sciodrepoides watsoni	2013	1901	2008	1905	2013	3
Catops chrysomeloides	2008	1899	2008	1905	2007	3
Catops coracinus	2007	1901	1998	1905	2007	2
Catops fuliginosus	2014	1901	2014	1905	2002	3
Catops fuscus	1995	1901	1995	1905	1907	2
Catops grandicollis	2009	1899	2009	1960	2007	2
Catops kirbyi	1995	1901	1995	1905	1905	2
Catops longula	2015	1899	2015			1
Catops morio	2013	1899	2012	1971	2013	2
Catops nigricans	2009	1897	2009	1864	1971	3
Catops nigrita	2001	1899	1960	2000	2001	2
Catops tristis	2013	1897	2011	1905	2013	4
Colon angulare	1905	1905	1905			0
Colon appendiculatum	1900	1900	1900			0
Colon brunneum	1972	1901	1960	1913	1913	0
Colon dentipes	1907	1907	1907			0
Colon latum	1924	1924	1924			0
Colon serripes	1908	1908	1908			0
Colon viennense	1908	1901	1908			0
SILPHIDAE						
Necrophorus humator	2011	1897	2011	1905	2006	4
Necrophorus interruptus	1961	1961	1961	1960	1960	0
Necrophorus investigator	2013	1897	2013	1905	2006	3
Necrophorus vespillo	2007	1897	2007	1971	1971	2
Necrophorus vespilloides	2013	1897	2011	1913	2014	4
Necrophorus vestigator	1915	1915	1915			0

Species	Cumbria latest year	VC 70 Cumberland		VC 69 Westmorland		Frequency
		first year	last year	first year	last year	
<i>Necrodes littoralis</i>	2008	1901	2008	1905	1972	2
<i>Thanatophilus rugosus</i>	2013	1897	2011	1905	2013	3
<i>Thanatophilus sinuatus</i>	1993	1911	1993			1
<i>Oiceoptoma thoracicum</i>	2014	1897	2014	1904	2013	4
<i>Aclypea opaca</i>	2012	1899	2012	1971	1971	2
<i>Dendroxena quadrimaculata</i>	2003	1897	2003	1953	1990	2
<i>Silpha atrata</i>	2015	1897	2015	1905	2014	6
<i>Silpha obscura</i>	1988	1841	1988	1960	1960	1
<i>Silpha tristis</i>	2008	1899	2008	1918	1992	2
<i>Silpha tyrolensis</i>	1963	1897	1926	1905	1963	0
SCYDMAENIDAE						
<i>Cephennium gallicum</i>	2013	2008	2013	2013	2013	2
<i>Microscydmus nanus</i>	2012	2008	2012			2
<i>Neuraphes angulatus</i>	2012	1906	2012			2
<i>Neuraphes elongatulus</i>	2013	1907	2009	1970	2013	2
<i>Neuraphes ruthenus</i>	1957	1907	1957			0
<i>Scydmoraphes helvolus</i>	1907	1905	1907			0
<i>Stenichnus bicolor</i>	1907	1907	1907			0
<i>Stenichnus collaris</i>	2013	1899	2012	1905	2013	3
<i>Stenichnus scutellaris</i>	2012	1988	2012	1971	1971	2
<i>Stenichnus godarti</i>	2011	2011	2011			1
<i>Euconnus hirticollis</i>	2001	1899	1924	2001	2001	1
<i>Scydmaenus tarsatus</i>	2014	1903	2014	1905	1905	6
SCAPHIDIIDAE						
<i>Scaphidium quadrimaculatum</i>	2010	1985	1991	1918	2010	3
<i>Scaphisoma agaricinum</i>	2010	1905	1987	1904	2010	2
<i>Scaphisoma boleti</i>	1922	1901	1922			0
STAPHYLINIDAE						
<i>Micropeplus fulvus</i>	1993	1901	1993			2
<i>Micropeplus porcatus</i>	1937	1902	1937	1865	1865	0
<i>Micropeplus staphylinoides</i>	2004	1901	2004			2
<i>Micropeplus tesserula</i>	1907	1907	1907			0
<i>Metopsia retusa</i>	2001	1899	1993	1865	2001	3
<i>Megarthus affinis</i>	2013	1992	2013			2
<i>Megarthus denticollis</i>	2007	1899	2007			4
<i>Megarthus depressus</i>	2016	1902	2016	1905	1985	3
<i>Megarthus sinuatocollis</i>	2013	1903	2013	1905	2012	3
<i>Proteinus brachypterus</i>	2014	1898	2014	1905	2006	5
<i>Proteinus crenulatus</i>	1914	1907	1914	1913	1913	0
<i>Proteinus laevigatus</i>	2012	2007	2012			2
<i>Proteinus ovalis</i>	2014	1897	2014	1905	2006	3
<i>Anthobium atrocephalum</i>	2013	1899	2013			3
<i>Anthobium unicolor</i>	2014	1897	2014	1905	2013	5
<i>Olophrum assimile</i>	1984			1976	1984	0
<i>Olophrum fuscum</i>	2013	1905	2013	1905	2013	3
<i>Olophrum piceum</i>	2015	1898	2015	1905	2008	5
<i>Deliphrum tectum</i>	1964	1900	1907	1905	1964	0
<i>Arpedium brachypterus</i>	2013	1903	2013	1864	2011	4
<i>Acidota crenata</i>	2015	1899	2015	1960	2001	3
<i>Acidota cruentata</i>	1991	1907	1991	1978	1986	2
<i>Phyllodrepoidea crenata</i>	2011	1921	2011	2007	2011	3
<i>Lesteva hanseni</i>	2007			1995	2007	2
<i>Lesteva heeri</i>	2012	1898	2012	1904	2001	3
<i>Lesteva longoelytrata</i>	2010	1898	2010	1864	2004	4
<i>Lesteva monticola</i>	2010	1905	2010	1984	1996	3
<i>Lesteva pubescens</i>	2011	1897	2011	1865	1984	2

Species	Cumbria latest year	VC 70 Cumberland		VC 69 Westmorland		Frequency
		first year	last year	first year	last year	
Lesteva punctata	2013	1901	2008	1865	2013	3
Geodromicus longipes	1992	1839	1992	1865	1985	2
Geodromicus nigrita	2000	1845	2000	1864	1980	1
Anthophagus alpinus	1991	1908	2000?	1864	1985	2
Anthophagus caraboides	2002	1839	2002	1905	1905	2
Eusphalerum luteum	2014	1910	2014	1905	2010	2
Eusphalerum minutum	2014	1901	2014	1864	2010	3
Eusphalerum primulae	2008	1901	1995	2008	2008	2
Eusphalerum sorbi	2013	1898	2013	1899	2000	3
Eusphalerum torquatum	2014	1901	2014	1905	2013	5
Acrulia inflata	2009			2009	2009	1
Phyllodrepa floralis	2015	1898	2015	1960	1960	2
Phyllodrepa puberula	2005	1900	2005			1
Dropephylla grandiloqua	2012	1990	2011	1984	2012	3
Dropephylla gracilicornis	1907	1905	1907			0
Dropephylla ioptera	2014	1900	2014	1905	2013	3
Dropephylla vilis	2012	1901	2006	1905	2012	4
Hapalaraea pygmaea	1991	1907	1907	1991	1991	1
Acrolocha sulcula	1905	1899	1905			0
Omalium allardi	1907	1901	1907			0
Omalium caesum	1991	1901	1907	1991	1991	1
Omalium excavatum	2010	1899	2010			2
Omalium exiguum	1984	1901	1907	1984	1984	0
Omalium italicum	1915	1901	1915			0
Omalium laeviusculum	1995	1904	1995	1960	1960	1
Omalium laticolle	1985	1902	1908	1985	1985	1
Omalium oxyacanthae	1917	1901	1917	1905	1907	0
Omalium riparium	2008	1898	2008	1992	1992	2
Omalium rivulare	2013	1897	2013	1905	1971	3
Omalium rugulipenne	1960	1898	1960			0
Omalium septentrionis	2007	1902	1960	2007	2007	1
Phloeonomus punctipennis	2013	1903	2010	1988	2013	3
Phloeonomus pusillus	2008	1899	2008	1905	1905	3
Phloeostiba plana	2011	1900	2011			2
Xylostiba monilicornis	2003			2003	2003	1
Xylodromus concinnus	1994	1901	1994	1905	1986	2
Xylodromus depressus	1995	1900	1995			1
Micralymma marina	1994	1907	1994			2
Philorinum sordidum	2014	1901	2014	1905	2012	4
Hadrognathus longipalpis	2013	1987	2013			3
Coryphium angusticolle	2012	1902	2012	1989	2009	3
Phloeocharis subtilissima	2013	1906	2013	2013	2013	3
Pseudopsis sulcata	1905	1905	1905			0
Deleaster dichrous	2014	1829	2014	1999	1999	2
Coprophilus striatulus	1907	1901	1907	1905	1905	0
Syntomium aeneum	2001	1901	2001	1929	1984	2
Bledius erraticus	1848	1848	1848			0
Bledius fergussoni	1987	1901	1987			1
Bledius fuscipes	2003	1943	2003	1960	1960	1
Bledius gallicus	2008	1901	2008			2
Bledius limicola	2006	1899	2006	1937	1990	3
Bledius longulus	2004	1845	2004			2
Bledius opacus	2006	1900	2006	1960	1960	2
Bledius pallipes	2004	1900	2000	2004	2004	2
Bledius praetermissus	2000	1907	2000	1913	1913	2
Bledius subniger	1987	1987	1987	1960	1960	1

Species	Cumbria latest year	VC 70 Cumberland		VC 69 Westmorland		Frequency
		first year	last year	first year	last year	
Bledius subterraneus	2004	1898	2004	2000	2004	4
Bledius terebrans	2004	1926	2004			2
<i>Bledius tricornis</i>	1835	1835	1835			0
Bledius unicornis	1980	1980	1980	1955	1955	0
Ochtheophilus aureus	2004	1900	2004	1997	1997	3
Ochtheophilus omalinus agg.	2004	1900	2004	2004	2004	3
Thinodromus arcuatus	2008	1897	2000	1905	2008	2
Carpelimus bilineatus	2000	1900	1993	1905	2000	2
Carpelimus corticinus	2014	1902	2014			3
Carpelimus elongatulus	2014	1901	2014	2001	2007	3
Carpelimus fuliginosus	1998	1906	1998			1
Carpelimus halophilus	1922	1922	1922			0
Carpelimus impressus	2000	2000	2000	2000	2000	2
<i>Carpelimus gracilis</i>	2007	2007	2007			1
Carpelimus pusillus	2005	1902	2005	1905	2004	2
Carpelimus rivularis	2008	1900	2008	1905	2004	2
Carpelimus schneideri	1990	1907	1990	1990	1990	2
Carpelimus subtilicornis	2000	2000	2000			1
Carpelimus zealandicus	2001	2001	2001	1993	1993	2
Thinobius bicolor	1995	1905	1906	1995	1995	1
Thinobius newberyi	2014	1907	2014			1
Thinobius strandi	2004	1905	2004			1
Platystethus arenarius	2004	1897	1993	1905	2004	3
Platystethus cornutus	2000	1901	2000	2004	2004	2
Anotylus complanatus	2011	1903	2010	1960	2011	3
Anotylus fairmairei	1925	1905	1925			0
Anotylus inustus	2014	1901	2008	1998	2014	4
Anotylus maritimus	1999	1899	1999	1960	1960	2
Anotylus mutator	1998	1998	1998			1
Anotylus nitidulus	1995	1899	1995	1905	1907	1
Anotylus rugosus	2014	1897	2014	1905	2010	5
Anotylus sculpturatus	2014	1899	2014	1913	2014	5
Anotylus tetracaratus	2009	1899	2009	1903	2001	4
Oxytelus fulvipes	1983			1983	1983	0
Oxytelus laqueatus	2014	1898	2014	1905	2007	5
Oxytelus sculptus	2008	1901	2008	1905	1905	3
Stenus aceris	2010	1907	2010	2010	2010	5
Stenus argus	2013	1904	2013	2004	2004	3
Stenus ater	2011	1926	2008	2006	2011	3
Stenus atratulus	1922	1905	1922			0
Stenus bifoveolatus	2014	1901	2013	1977	2014	4
Stenus biguttatus	2004	1880?	2004	1993	2004	2
Stenus bimaculatus	2015	1897	2015	1971	2013	4
Stenus binotatus	2011	1900	2011	2002	2010	3
Stenus boops	2014	1901	2014	1960	2014	4
Stenus brevipennis	2015	1905	2015	1984	2011	2
Stenus brunnipes	2015	1898	2015	1905	2013	6
Stenus canaliculatus	2014	1880?	2014	1960	2003	3
Stenus carbonarius	2014	1905	2014	1960	1960	2
Stenus cicindeloides	2014	1901	2014	1960	2014	5
Stenus clavicornis	2015	1898	2015	1905	2012	5
Stenus comma	2004	1835	2004			1
Stenus crassus	2014	2000	2013	2013	2014	3
Stenus flavipes	2013	1899	2014	1905	2012	4
Stenus formicetorum	2009			1986	2009	2
Stenus fossulatus	2009	1899	2009			2

Species	Cumbria latest year	VC 70 Cumberland		VC 69 Westmorland		Frequency
		first year	last year	first year	last year	
<i>Stenus fulvicornis</i>	2014	1898	2014	1972	2014	4
<i>Stenus fuscicornis</i>	1989	1989	1989			1
<i>Stenus fuscipes</i>	2011	1902	2011			2
<i>Stenus geniculatus</i>	2012	1992	2012	1976	2011	2
<i>Stenus guttula</i>	2008	1898	2008	1864	2008	4
<i>Stenus guynemeri</i>	1998	1894	1998	1864	1995	3
<i>Stenus impressus</i>	2015	1901	2015	1905	2013	6
<i>Stenus incanus</i>	1926	1901	1926			0
<i>Stenus incrassatus</i>	1987	1987	1987			1
<i>Stenus juno</i>	2014	1897	2014	1971	2013	5
<i>Stenus latifrons</i>	2013	1845	2008	2001	2013	4
<i>Stenus lustrator</i>	2014	1909	2014	1971	1998	2
<i>Stenus melanarius</i>	2012	1901	2012	1984	1984	2
<i>Stenus melanopus</i>	1999	1999	1999			1
<i>Stenus morio</i>	1905	1905	1905			0
<i>Stenus nanus</i>	2013	1898	2013	1905	1986	3
<i>Stenus nigritulus</i>	2004	1918	2004			2
<i>Stenus nitens</i>	2015	1999	2015	1971	2005	2
<i>Stenus nitidiusculus</i>	2014	1899	2014	1910	2013	6
<i>Stenus niveus</i>	1999	1905	1999	1995	1995	2
<i>Stenus ochropus</i>	2009	1880?	1901	2009	2009	1
<i>Stenus oscillator</i>	1999	1998	1999	1995	1995	2
<i>Stenus ossium</i>	2008	1898	2008	1960	1971	3
<i>Stenus pallipes</i>	2013	1991	2013	2011	2013	3
<i>Stenus pallitarsis</i>	2014	1899	2014	1993	2009	5
<i>Stenus picipennis</i>	1999	1904	1999			2
<i>Stenus picipes</i>	2013	1901	2013	1905	2013	5
<i>Stenus providus</i>	2014	1901	2014	1971	2013	5
<i>Stenus pubescens</i>	2014	1901	2014	1993	2001	4
<i>Stenus pusillus</i>	2008	1901	2007	1960	2008	3
<i>Stenus similis</i>	2014	1897	2014	1905	2014	7
<i>Stenus solutus</i>	2012	2010	2010	2012	2012	2
<i>Stenus subaeneus</i>	2006	2006	2006			1
<i>Stenus tarsalis</i>	2013	1897	2013	1971	2014	7
<i>Stenus umbratilis</i>	2007	2006	2007			2
<i>Dianous coerulescens</i>	2004	1894	2004	1864	2001	3
<i>Euaesthetus bipunctatus</i>	1993	1905	1993			1
<i>Euaesthetus laeviusculus</i>	2003	1902	2003	1984	1986	2
<i>Euaesthetus ruficapillus</i>	2012	1902	2012	2001	2001	3
<i>Paederus litoralis</i>	1835	1835	1835			0
<i>Paederus fuscipes</i>	2004	1901	2004			3
<i>Lathrobium angusticolle</i>	2013	1901	2013			2
<i>Lathrobium brunnipes</i>	2014	1897	2014	1905	2011	6
<i>Lathrobium elongatum</i>	2014	1901	2014	1960	1960	3
<i>Lathrobium fovulum</i>	1986			1984	1986	1
<i>Lathrobium fulvipenne</i>	2014	1897	2014	1905	2004	6
<i>Lathrobium geminum</i>	2008	1902	2008	1905	2002	4
<i>Lathrobium longulum</i>	2014	1908	2014	1971	1971	2
<i>Lathrobium multipunctum</i>	2000	1905	2000	1943	1960	3
<i>Lathrobium quadratum</i>	2014	1900	2014			2
<i>Lathrobium ripicola</i>	2010	1901	2010	2004	2004	2
<i>Lathrobium terminatum</i>	2014	1901	2014	1960	2010	4
<i>Lathrobium zetterstedti</i>	2013	1899	1960	1979	2013	2
<i>Ochtheophilum fracticorne</i>	2014	1899	2014	1971	2010	5
<i>Medon brunneus</i>	2008	2008	2008	1971	1971	1
<i>Medon ripicola</i>	1920	1920	1920			0

Species	Cumbria latest year	VC 70 Cumberland		VC 69 Westmorland		Frequency
		first year	last year	first year	last year	
Lithocharis nigriceps	2010	1992	2010			4
Lithocharis obsoleta	1907	1904	1907			0
Lithocharis ochracea	2010	1901	2010			4
Scopaeus sulcicollis	2001	1903	1903	2001	2001	1
Astenus lyonessius	1910	1910	1910			0
Rugilus erichsoni	2008	1898	2002	1905	2008	2
Rugilus orbiculatus	2010	1903	2010	1905	1905	2
Rugilus rufipes	1989	1899	1989	1960	1960	1
Sunius propinquus	2008			2008	2008	1
Othius angustus	2013	1898	2011	1905	2013	4
Othius laeviusculus	2002	1901	2002	2001	2001	3
Othius myrmecophilus	2012	1898	2011	1905	2012	5
Othius punctulatus	2014	1897	2013	1864	2014	5
Atrecus affinis	2014	1897	2014	1905	2013	6
Leptacinus bathycrus	1905	1905	1905			0
Leptacinus formicetorum	2011	1906	2011			2
Leptacinus pusillus	2010	1901	2010			3
Phacophallus parumpunctatus	1960	1908	1908	1960	1960	0
Nudobius lentus	2006	2005	2006	1971	1971	2
Gyrophypnus angustatus	2009	1901	2009	1905	2004	4
Gyrophypnus fracticornis	2009	1897	2009	1905	1984	4
Xantholinus glabratus	2003	1897	2003	1984	1986	4
Xantholinus elegans	2002			1984	2002	2
Xantholinus laevigatus	2002	2002	2002	1979	1979	1
Xantholinus linearis	2014	1897	2014	1905	2007	5
Xantholinus longiventris	2014	1901	2014	1905	2014	4
Neobisnius lathrobioides	2000	1901	2000			1
Neobisnius procerulus	2001	2001	2001			1
Neobisnius prolixus	2001	1999	2001			3
Neobisnius villosulus	2000			2000	2000	1
Erichsonius cinerascens	2007	1900	2007	2000	2000	2
Erichsonius signaticornis	1997	1909	1997			2
Philonthus addendus	2010	1989	2010	1960	2006	2
Philonthus agilis	1943	1943	1943			0
Philonthus albipes	2007	1898	2007	1864	1960	2
Philonthus atratus	2008	2008	2008			1
Philonthus cephalotes	2004	1898	2004	1905	1907	3
Philonthus cognatus	2014	1897	2014	1943	2007	6
Philonthus concinnus	2007	1900	2007			1
Philonthus corvinus	1915	1902	1915			0
Philonthus cruentatus	2009	1905	1905	1960	2009	1
Philonthus debilis	2014	1903	2014			2
Philonthus decorus	2014	1897	2014	1905	2013	5
Philonthus discoideus	2008	1902	2008			1
Philonthus ebeninus	1935	1905	1935			0
Philonthus fimetarius	2014	1898	2014	1905	2014	7
Philonthus fumarius	2005	2005	2005			1
Philonthus rufipes	2008	1898	2008			1
Philonthus intermedius	1994	1900	1994			2
Philonthus jurgans	1940	1927	1940			0
Philonthus laminatus	2014	1897	2014	1905	2014	5
Philonthus longicornis	2008	1905	2008	1864	1864	2
Philonthus mannerheimi	1997	1845	1997	1979	1979	1
Philonthus marginatus	2014	1899	2014	1905	2014	5
Philonthus micans	2014	1906	2014	1905	2005	3
Philonthus micantoides	2003	1992?	2003			2

Species	Cumbria latest year	VC 70 Cumberland		VC 69 Westmorland		Frequency
		first year	last year	first year	last year	
<i>Philonthus nigrita</i>	2013	1900	2014	1905	2001	4
<i>Philonthus nigriventris</i>	1984	1900	1925	1971	1984	0
<i>Philonthus politus</i>	2014	1897	2014	1905	2013	4
<i>Philonthus puella</i>	2013	1899	2013	1905	2012	3
<i>Philonthus quisquiliarius</i>	1987	1987	1987			1
<i>Philonthus rectangulus</i>	2006	1943	2006			3
<i>Philonthus rotundicollis</i>	2004	1845	1954	2000	2004	2
<i>Philonthus rubripennis</i>	2004	1898	2004	1905	2004	4
<i>Philonthus sanguinolentus</i>	2010	1897	2010			2
<i>Philonthus sordidus</i>	2012	1898	2012	1998	2010	4
<i>Philonthus splendens</i>	2014	1897	2014	1905	2014	4
<i>Philonthus succicola</i>	2012	1900	2010	1905	2012	3
<i>Philonthus tenuicornis</i>	2014	1900	2014	1905	2012	3
<i>Philonthus umbratilis</i>	2007	1845	2007	1905	1960	2
<i>Philonthus varians</i>	2007	1897	2006	1905	2007	5
<i>Philonthus varius</i>	2014	1898	2014	1905	2013	7
<i>Philonthus ventralis</i>	2012	1900	2012			2
<i>Gabrius bishopi</i>	2007	1901	2004	1960	2007	3
<i>Gabrius breviventer</i>	2015	1905	2012	2015	2015	3
<i>Gabrius exiguus</i>	1965	1965	1965			0
<i>Gabrius nigritulus</i>	1999	1901	1999	1992	1992	2
<i>Gabrius osseticus</i>	2010	1903	2010			2
<i>Gabrius piliger</i>	2014	1905	2014	1960	1960	3
<i>Gabrius splendidulus</i>	2014	1991	2014	1989	2007	3
<i>Gabrius appendiculatus</i>	2014	1901	2014	1984	1984	1
<i>Gabrius trossulus</i>	2014	1897	2014	1984	1986	2
<i>Gabrius velox</i>	2001	1942	2001	2001	2001	2
<i>Cafius fucicola</i>	1905	1905	1905			0
<i>Cafius xantholoma</i>	2008	1898	2008	1960	1960	3
<i>Platydracus fulvipes</i>	1973	1898	1973			0
<i>Platydracus latebricola</i>	2002			2001	2002	2
<i>Platydracus pubescens</i>	1993	1898	1993	1905	1918	1
<i>Platydracus stercorarius</i>	2006	1898	2001	1981	2006	2
<i>Ocypus aeneocephalus</i>	2013	1897	2013	1984	2007	4
<i>Ocypus ater</i>	2012	1992	2012	1968	2007	3
<i>Ocypus brunripes</i>	2011	1897	2008	1971	2011	3
<i>Staphylinus dimidiaticornis</i>	1931	1931	1931	1908	1908	0
<i>Tasgius morsitans</i>	2007			1978	2007?	1
<i>Staphylinus erythropterus</i>	2011	1897	2011	1899	2011	3
<i>Ocypus fuscatus</i>	1952	1903	1952			0
<i>Ocypus melanarius</i>	2012	1897	2009	1968	2012	4
<i>Ocypus nero</i>	2003	1845	2003	1943	2002	3
<i>Ocypus olens</i>	2014	1897	2011	1943	2014	5
<i>Ocypus winkleri</i>	1996	1996	1996			1
<i>Creophilus maxillosus</i>	2006	1897	2006	1905	2004	3
<i>Ontholestes murinus</i>	2003	1899	2003			2
<i>Ontholestes tessellatus</i>	2013	1898	1993	1971	2013	2
<i>Heterothops binotata</i>	2008	1898	2008	1992	1992	2
<i>Heterothops minutus</i>	2012	2010	2012			2
<i>Heterothops praevia</i>	2013	1906	2013			2
<i>Euryporus picipes</i>	2001	1900	1907	2001	2001	1
<i>Quedius aridulus</i>	2013	1989?	2012	2001	2013	3
<i>Quedius auricomus</i>	2012	1845	2012	1865	1995	4
<i>Quedius boopoides</i>	2008	1911	2008	1971	2004	4
<i>Quedius boops (arestor) agg.</i>	2013	1897	2013	1905	2002	3
<i>Quedius brevis</i>	1960	1907	1960			0

Species	Cumbria latest year	VC 70 Cumberland		VC 69 Westmorland		Frequency
		first year	last year	first year	last year	
Quedius cinctus	2011	1898	2011	1905	1960	2
Quedius cruentus	2010	1901	2010	2010	2010	3
Quedius curtipennis	2015	1905	2015	1943	2008	5
Quedius fulgidus	2015	1908	2015			1
Quedius fuliginosus	2014	1897	2013	1938	2014	5
Quedius fulvicollis	2009	1898	2009	1905	2009	2
Quedius fumatus	2010	1901	2010	1864	2007	3
Quedius simplicifrons	2006	1987	2006	1957	1957	3
Quedius humeralis	1910	1905	1910			0
Quedius invreae	1995	1903	1988	1995	1995	2
Quedius lateralis	2008	1899	2008	1960	2002	3
Quedius longicornis	2006	1905	2006	1906	1972	1
Quedius maurorufus	2014	1901	2014	1905	2001	4
Quedius maurus	2002	1946	1995	1905	2002	2
Quedius mesomelinus	2013	1897	2013	1905	1991	5
Quedius molochinus	2010	1897	2010	1905	2001	4
Quedius nigriceps	2002	1899	2002	1905	1980	2
Quedius nigrocaeruleus	1993	1911	1993			1
Quedius nitipennis	2013	1897	2010	1864	2013	3
Quedius picipes	2010	1901	2010	1984	2008	2
Quedius plagiatus	2013	1991	2013	1960	2012	5
Quedius puncticollis	1981	1906	1981	1971	1972	0
Quedius schatzmayri	2010	1901	2010	2001	2001	4
Quedius scintillans	2004	1901	2004	1905	1905	1
Quedius scitus	1907	1907	1907			0
Quedius semiaeneus	2004	1897	2004	1960	1983	2
Quedius semiobscurus	2011	1897	2011	1905	1998	4
Quedius tristis	2008	1897	2008	1905	2002	4
Quedius umbrinus	2013	1897	2013	1864	2013	4
Quedius xanthopus	2009	1900	2009	1864	1997	3
Habrocerus capillaricornis	2013	1901	2011	1971	2013	2
Mycetoporus angularis	2014	1922	1995	2014	2014	2
Mycetoporus clavicornis	2002	1899	2002	1905	1986	2
Mycetoporus despectus	2010	2007	2010	1976	1979	2
Mycetoporus erichsonanus	1992	1992	1992			1
Mycetoporus lepidus	2001	1899	2001	1984	2001	3
Mycetoporus longicornis	1982			1982	1982	0
Mycetoporus longulus	2000	1901	2000	1905	1986	3
Mycetoporus nigricollis	2006	1990	2006			3
Mycetoporus punctus	2009	1901	2009	1984	1984	2
Mycetoporus rufescens	2010	1905	1993	1984	2010	2
Mycetoporus splendidus	2011	1899	2011	1905	1971	3
Bryoporus maklini	2009	1912	2009	1984	1984	2
Lordithon exoletus	2013	1899	2013			2
Lordithon lunulatus	2011	1898	2011	1905	1973	2
Lordithon thoracicus	2010	1898	2010	1905	2010	3
Lordithon trinotatus	2014	1898	2014	1971	2007	5
Bolitobius analis	2006	1897	2006	1905	2010	2
Bolitobius cingulatus	2009	1845	2009	1971	1986	2
Bolitobius inclinans	1986	1897	1904	1976	1986	1
Sepedophilus constans	1869	1869	1869			0
Sepedophilus immaculatum	1910	1898	1910			0
Sepedophilus littoreum	2010	1897	2010	1960	1960	1
Sepedophilus marshami	2005	1897	2005	1905	1971	2
Sepedophilus nigripennis	2005	1898	2005	1986	2012	3
Tachyporus atriceps	2009	1901	2009	1960	1986	3

Species	Cumbria latest year	VC 70 Cumberland		VC 69 Westmorland		Frequency
		first year	last year	first year	last year	
Tachyporus chrysomelinus	2015	1897	2015	1905	2008	7
Tachyporus dispar	2015	1996	2015	1971	2013	4
Tachyporus formosus	1993	1907	1993	1960	1960	1
Tachyporus hypnorum	2010	1897	2010	1905	2007	5
Tachyporus nitidulus	2014	1897	2014	1905	2012	5
Tachyporus obtusus	2014	1897	2014	1905	2007	5
Tachyporus pallidus	2004	1903	2013	2013	2014	3
Tachyporus pusillus	2013	1897	2013	1905	1986	4
Tachyporus solutus	2015	1901	2015	1913	2014	4
Tachyporus tersus	2007	1898	2007			1
Tachyporus transversalis	2015	1898	2015			2
Lamprinodes saginatus	1902	1845	1902			0
Tachinus corticinus	2006	1897	2004	1905	2006	2
Tachinus elongatus	2012	1845	2012	1864	2010	2
Tachinus humeralis	2011	1902	2011	1905	1913	2
Tachinus laticollis	2014	1909	2014	1864	2013	4
Tachinus lignorum	1909	1845	1909			0
Tachinus marginellus	2014	1897	2014	1905	2010	5
Tachinus pallipes	2007	1910	2007			2
Tachinus proximus	2010	1902	2010			2
Tachinus rufipennis	1903	1902	1903			0
Tachinus scapularis	1908	1908	1908			0
Tachinus signatus	2014	1897	2014	1905	2014	6
Tachinus subterraneus	2013	1897	2010	1905	2013	3
Cilea silphoides	1907	1901	1907			0
Gymnusa brevicollis	2014	1899	2014			2
Gymnusa variegata	2001	1845	1999	1999	2001	2
Cypha hanseni	1993	1993	1993			1
Cypha imitator	1908	1908	1908			0
Cypha laeviuscula	2011	1901	2011	1905	2011	3
Cypha longicornis	2006	1901	2006	1905	1905	2
Cypha pulicaria	1922	1922	1922	2010	2010	1
Cypha punctum	1908	1905	1908	1905	1905	0
Oligota apicata	2005	1925	2005			2
Oligota parva	2008	2007	2008			2
Oligota inflata	2010	1899	2010	1905	1905	4
Oligota picipes	1905	1905	1905			0
Oligota punctulata	2009	2009	2009			1
Oligota pusillima	1993	1905	1993			1
Myllaena brevicornis	2014	1899	2014	1971	2013	4
Myllaena dubia	2015	1902	2015			1
Myllaena elongata	2000	1902	2000	1997	1998	2
Myllaena gracilis	2003	1992	2003			2
Myllaena infuscata	2014	1902	2014			3
Myllaena kraatzi	2004	2004	2004			1
Myllaena minuta	2012	1991	2012	2001	2001	2
Diglotta submarina	1905	1905	1905			0
Hygronoma dimidiata	1998	1906	1998			2
Encephalus complicans	2015	1904	2015	2008	2008	2
Gyrophaena affinis	2009	1901	2009	1960	2002	2
Gyrophaena angustata	2010	1900	2003	2010	2010	2
Gyrophaena bihamata	2008	1901	2008			3
Gyrophaena congrua	1915	1915	1989?			1
Gyrophaena fasciata	2013	1905	2013			3
Gyrophaena gentilis	2013	1898	2013			2
Gyrophaena latissima	2009	1908	2009	1989	2013	2

Species	Cumbria latest year	VC 70 Cumberland		VC 69 Westmorland		Frequency
		first year	last year	first year	last year	
<i>Gyrophaena nana</i>	2013	1901	2008	2012	2013	3
<i>Gyrophaena pulchella</i>	1987			1987	1987	1
<i>Gyrophaena strictula</i>	2008	1905	2008			3
<i>Placusa depressa</i>	2008	1900	2008			1
<i>Homalota plana</i>	2011	1905	2011	2007	2007	2
<i>Anomognathus cuspidatus</i>	2011	1901	1907	2011	2011	1
<i>Phytosus balticus</i>	1972	1904	1972	1960	1960	0
<i>Phytosus nigriventris</i>	1938	1938	1938			0
<i>Leptusa fumida</i>	2013	1899	2013	1971	2013	5
<i>Leptusa norvegica</i>	1997	1992	1997			2
<i>Leptusa pulchella</i>	2012	2009	2012			2
<i>Leptusa ruficollis</i>	2013	1900	2013	1988	2013	4
<i>Bolitochara bella</i>	2012			2012	2012	1
<i>Bolitochara lucida</i>	2007	1845	2007	1904	1993	2
<i>Bolitochara obliqua</i>	2013	1899	2013	1905	2013	4
<i>Bolitochara pulchra</i>	2007	1905	2007			1
<i>Autalia impressa</i>	1999	1897	1999			3
<i>Autalia longicornis</i>	2014	1989	2014			3
<i>Autalia puncticollis</i>	1984	1910	1910	1984	1984	0
<i>Autalia rivularis</i>	2014	1901	2014	1984	2001	5
<i>Cordalia obscura</i>	2002	1901	2002	1960	1960	2
<i>Falagria caesia</i>	1960	1902	1905	1960	1960	0
<i>Falagria sulcatula</i>	1903	1903	1903			0
<i>Falagria thoracica</i>	1926	1910	1926			0
<i>Myrmecopora sulcata</i>	1995	1910	1995			1
<i>Myrmecopora uvida</i>	1995	1995	1995			1
<i>Tachyusa atra</i>	1993	1901	1993			1
<i>Tachyusa constricta</i>	2004	1845	2004	2000	2004	3
<i>Tachyusa leucopus</i>	2004	1898	2004	1864	2004	3
<i>Tachyusa scitula</i>	1907	1845	1907			0
<i>Tachyusa umbratica</i>	2000	1993	2000			2
<i>Gnypeta caerulea</i>	1993	1901	1993	1899	1905	1
<i>Gnypeta carbonaria</i>	2005	1899	2005			2
<i>Callicerus obscurus</i>	2013	1905	2013	2004	2007	3
<i>Callicerus rigidicornis</i>	2011	1906	2011	1960	1960	1
<i>Schistoglossa aubei</i>	1907	1905	1907			0
<i>Schistoglossa curtipennis</i>	2009	1901	2009	1984	1986	2
<i>Schistoglossa gemina</i>	2010	1908	2010	1984	2001	2
<i>Boreophilia eremita</i>	2013	1903	2013	1984	2013	4
<i>Hydrosmecta delicatula</i>	2001	2001	2001	1995	1995	2
<i>Hydrosmecta eximia</i>	2005	2004	2005			2
<i>Hydrosmecta fragilis</i>	1912	1903	1912			0
<i>Hydrosmecta thinobioides</i>	2000	1905	2005	1996	1997	3
<i>Hydrosmectina septentrionum</i>	2005	1905	2005	2000	2004	3
<i>Aloconota cambrica</i>	2010	1901	2010	1999	2000	5
<i>Aloconota currax</i>	2010	1899	2010	1865	2005	3
<i>Aloconota gregaria</i>	2012	1897	2012	1913	2007	4
<i>Aloconota insecta</i>	2011	1845	2005	2005	2011	3
<i>Aloconota sulcifrons</i>	2005	1901	2005	2005	2005	2
<i>Amischa analis</i>	2014	1899	2014	1905	2014	5
<i>Amischa cavifrons (=bifoveolata)</i>	2015	1905	2015	1905	1986	3
<i>Amischa decipiens</i>	2006	2004	2006			2
<i>Amischa forcipata</i>	2007	1901	2007			1
<i>Amischa nigrofusca</i>	2010	1901?	2010			1
<i>Amidobia talpa</i>	2011	1906	2011			1
<i>Nehemitropia lividipennis</i>	2012	1899	2012	2010	2010	4

Species	Cumbria latest year	VC 70 Cumberland		VC 69 Westmorland		Frequency
		first year	last year	first year	last year	
Notothecta flavipes	2011	1906	2011			2
Lyprocorrhe anceps	2011	1906	2011			1
Geostiba circellaris	2015	1899	2015	1905	2014	5
Dinaraea aequata	2014	1910	2013	1971	2014	4
Dinaraea angustula	2008	1905	2008			2
Dinaraea linearis	2011	1899	2011			2
Dochmonota clancula	1942	1942	1942			0
Dadobia immersa	1960?	1899	1960?			0
Platarea brunnea	2006	1898	2006			2
Liogluta granigera	1991	1905	1991			1
Liogluta longiuscula	2003	1897	2003	1905	2001	2
Liogluta alpestris	2012	1901	2012	1976	2010	3
Liogluta oblongiuscula	1999	1905	1999	2002?	2007?	2
Liogluta pagana	2008	1910	2008	1905	1905	1
Philhygra arctica	2013	1921	2013	1984	2010	2
Philhygra britteni	1911	1911	1911			0
Philhygra debilis	2010	1899	2009	2010	2010	2
Philhygra elongatula	2014	1899	2014	1905	2008	5
Philhygra fallaciosa	2011	1905	2011			2
Philhygra gyllenhali	2011	1905	2011			2
Philhygra hygrobica	2011			2011	2011	1
Philhygra hygrotopora	2010	1901	2010	2010	2010	2
Philhygra luridipennis	1998	1900	1998			2
Philhygra malleus	2014	1914	2014	2004	2004	3
Philhygra melanocera	2014	1905	2014	1991	2003	3
Philhygra obtusangula	2001			2001	2001	1
Philhygra palustris	1984			1984	1984	0
Philhygra scotica	2006			2006	2006	1
Philhygra volans	1996	1904	1996	1905	1905	1
Atheta (Enalodroma) hepatica	2007	1903	1908	2007	2007	1
Atheta (Bessobia) excellens	1986	1905	1943	1984	1986	1
Atheta (Bessobia) fungivora	2013	1901	2013			3
Atheta (Bessobia) monticola	1905	1905	1905			0
Atheta (Bessobia) occulta	1910	1865	1910			0
Atheta diversa	2005	2005	2005			1
Atheta divisa	1925	1903	1925			0
Atheta euryptera	2009	1901	2009	1913	1913	2
Atheta nigricornis	2007	1901	1907	1971	2007	1
Atheta nigrifula	1989	1903	1989	1913	1913	1
Atheta (Anopleta) corvina	2013	1905	2013			2
Atheta (Microdota) amicala	2013	1901	2013	2000	2009	4
Atheta (Microdota) atricolor	2010	1901	2010	1984	1986	2
Atheta (Microdota) excelsa	1905	1905	1905			0
Atheta (Microdota) indubia	2009	1904	2009	1913	2000	2
Atheta (Microdota) inquinula	1905	1905	1905			0
Atheta (Pachyatheta) cribrata	1984			1984	1984	0
Atheta (Cadaverota) cadaverina	2011	1912	2011	1971	1986	2
Atheta (Alaobia) gagatina	2013	1899	2013			2
<i>Atheta (Alaobia) hybrida</i>	1984	1927	1927	1984	1984	0
Atheta (Alaobia) picipes	2013	1909	2013			2
Atheta (Alaobia) scapularis	2013			2013	2013	1
Atheta (Alaobia) sodalis	2003	1901	2003	1905	1984	2
Atheta (Alaobia) subglabra	2005	2005	2005	2005	2005	2
Atheta (Alaobia) trinotata	2009	1899	2009	1864	1907	3
Atheta (Oreostiba) tibialis	2013	1901	2012	1865	2013	4
Atheta (Coprothassa) melanaria	1907	1905	1907			0

Species	Cumbria latest year	VC 70 Cumberland		VC 69 Westmorland		Frequency
		first year	last year	first year	last year	
Atheta (Mocyta) amplicollis	2013	2000	2007	2005	2013	3
Atheta (Mocyta) clientula	2010	1901	2003	1905	2010	2
Atheta (Mocyta) fungi	2015	1899	2015	1905	2012	7
Atheta (Mocyta) orbata	2014	1905	2014			2
Atheta (Acrotona)aterrima	2010	1901	2010	1905	2005	3
Atheta (Acrotona)exigua	1985	1907	1907	1984	1985	1
Atheta (Acrotona) muscorum	2012	1901	2012	1905	1905	2
Atheta (Acrotona) obfuscata	2004	1996	2004			2
Atheta (Acrotona) parvula	2009	1901	2009			1
Atheta (Acrotona) pygmaea	2005	1905	2005	2004	2004	2
Atheta (Rhagocneme) subsinuata	1989	1914	1989			1
Atheta (Datomicra) canescens	1907	1905	1907			0
Atheta (Datomicra) celata	2008	1901	2008	1984	1986	2
Atheta (Datomicra) nigra	2014	1901	2014	1864	2010	4
Atheta (Datomicra) sordidula	1907	1905	1907			0
Atheta (Datomicra) zosteræ	1905	1905	1905			0
Atheta aeneicollis	2010	1901	2010	2007	2007	2
Atheta aquatica	2014	1901	2014	1905	2006	3
Atheta aquatilis	2007			2007	2007	1
Atheta brunneipennis	2013	1901	2013			2
Atheta castanoptera	2014	1899	2014	1864	2007	4
Atheta graminicola	2014	1899	2014	2006	2011	4
Atheta hypnorum	2013	1899	2013	1971	2007	2
Atheta incognita	1999	1907	1999			1
Atheta triangulum	1907	1865	1907	1864	1864	0
Atheta xanthopus	2008	1901	2008	2000	2000	2
Atheta basicornis	1910	1906	1910			0
Atheta britanniae	2013	1901	2013	1905	2010	2
Atheta coriaria	2008	1907	2008	1864	1864	2
Atheta crassicornis	2014	1901	2014	1905	2012	4
Atheta fungicola	2011	1905	2011			2
Atheta intermedia	1907	1905	1907			0
Atheta (Mycetota) laticollis	2015	1899	2015	2010	2010	3
Atheta oblita	2010	1903	2010			3
Atheta pilicornis	2009	1900	2009			1
Atheta ravilla	2010	1907	2010			2
Atheta strandiella	2006			2006	2006	1
Atheta (Dimetrota) atramentaria	2013	1901	2013	1905	2013	5
Atheta (Dimetrota) cinnamoptera	1927	1899	1927			0
Atheta (Dimetrota) ischnocera	1991	1901	1991			1
Atheta (Dimetrota) laevana	1906	1905	1906			0
Atheta (Dimetrota) macrocera	1923	1910	1923	1913	1913	0
Atheta (Dimetrota) marcida	2011	1905	2011			3
Atheta (Dimetrota) nigripes	2008	1903	2008	1984	2007	2
Atheta (Dimetrota) puncticollis	2005	2005	2005	1968	1968	1
Atheta (Dimetrota) setigera	2009	1957	2009	1984	1984	1
Atheta (Chaetida) longicornis	2013	1899	2013	1905	2000	4
Atheta (Brundinia) marina	2014	1901	2008	2011	2014	2
Atheta (Thinobaena) vestita	2008	1898	2008	1960	2007	4
Halobrecta algae	1905	1905	1905			0
Halobrecta flavipes	1995	1903	1995			2
Alianta incana	2004	1931	2003	2004	2004	2
Trichiusa immigrata	2014	2006	2014	2014	2014	3
Drusilla canaliculata	2011	1898	2011	1905	2010	5
Zyras collaris	2004	1901	2004			1
Zyras humeralis	1927	1898	1927			0

Species	Cumbria latest year	VC 70 Cumberland		VC 69 Westmorland		Frequency
		first year	last year	first year	last year	
Zyras limbatus	2001	1926	1985	2001	2001	2
Lomechusa emarginata	1979			1956	1979	0
Dinarda maerkeli	1906	1906	1906			0
Phloeopora scribae	2015	2003	2015			2
Phloeopora corticalis	1993	1993	1993			1
Phloeopora testacea	2014	1901	2014	2006	2006	5
Ilyobates benettii	1907	1845	1907			0
Calodera aethiops	1960	1903	1926	1960	1960	0
Calodera riparia	2002	1906	2002			2
Chiloporata longitarsis	2015	1904	2015			2
Chiloporata rubicunda	1845	1845	1845			0
Amarochara umbrosa	1903	1903	1903			0
Ocalea badia	1992	1845	1992	1960	1960	1
Ocalea picata	2013	1898	2013	1864	1984	3
Ocalea rivularis	1993	1897	1993			2
Meotica anglica	1915	1905	1915			0
Meotica apicalis	2006	1906	2006			1
Ocyusa defecta	1913			1913	1913	0
Ocyusa hibernica	2008	2008	2008	1984	1986	2
Ocyusa maura	1999	1904	1999	1960	2004	2
Mniusa incassata	2012	1905	2012	1960	2011	4
Oxypoda alternans	2011	1898	2013	1971	1971	4
Oxypoda amoena	2008	1913	2008			1
Oxypoda annularis	2008	1905	2008	2001	2006	2
Oxypoda brachyptera	2000	1845	2000			1
Oxypoda carbonaria	1990	1907	1990			1
Oxypoda elongatula	2014	1898	2014	1960	2011	4
Oxypoda exoleta	2004	1901	2004			2
Oxypoda formiceticola	2011	1906	2011			1
Oxypoda haemorrhoea	2009	1901	2009			2
Oxypoda induta	1907	1905	1907			0
Oxypoda islandica	2012	1904	2012	1979	1986	2
Oxypoda lentula	2008	1906	2008			2
Oxypoda lividipennis	2006	1901	2006	1905	1905	2
Oxypoda nigricornis	2012	2007	2012			2
Oxypoda opaca	2008	1897	2008	1905	1986	3
Oxypoda procerula	2014	1994	2014	2001	2013	4
Oxypoda soror	1989	1911	1989	1984	1986	2
Oxypoda spectabilis	1984	1898	1910	1984	1984	0
Oxypoda tarda	1905	1903	1905			0
Oxypoda tirolensis	2003	1901	2003	1984	1984	1
Oxypoda umbrata	2015	1901	2015	1984	2014	4
Oxypoda vittata	1910	1907	1910			0
Ischnoglossa prolixa	2013	1897	2013	2006	2006	3
Dexiogygia corticina	2007	1835	2007			1
Thiasophila angulata	2011	1906	2011	1997	1997	2
Crataraea suturalis	2009	1906	2009	1960	1960	2
Haploglossa nidicola	1999	1904	1999			1
Haploglossa pulla	1907	1903	1907			0
Tinotus morion	2010	1900	2010	1905	1986	3
Aleochara bilineata	2004	1901	1910	2004	2004	1
Aleochara bipustulata	2011	1897	2011	1905	2007	2
Aleochara brevipennis	2013	1908	2013			2
Aleochara cuniculorum	1996	1901	1996			1
Aleochara curtula	2014	1897	2014	1905	2006	3
Aleochara discipennis	1920	1920	1920			0

Species	Cumbria latest year	VC 70 Cumberland		VC 69 Westmorland		Frequency
		first year	last year	first year	last year	
Aleochara funebris	1959	1897	1959			0
Aleochara fumata	1908	1908	1908			0
Polystomota grisea	2003	1900	2003	1960	1960	2
Polystomota intricata	1996	1900	1996	1913	1996	2
Aleochara lanuginosa	2011	1897	2011	1905	2010	5
Aleochara lygaea	1910	1909	1910			0
Aleochara moerens	1997	1907	1997			1
Aleochara ruficornis	2007	1901	1915	2007	2007	1
Aleochara spadicea	1960	1863	1960			0
Aleochara sparsa agg.	2011	1900	2011	1905	1905	2
Emplenota algarum	1902	1901	1902			0
Emplenota punctatella	1993	1898	1993			1
Aleochara villosa	1960	1905	1907	1960??	1960??	0
PSELAPHIDAE						
Bibloporus bicolor	2002	1904	1993	2002	2002	2
Biblopectus ambiguus	2001	1905	2001	2001	2001	2
Biblopectus minutissimus	1906	1906	1906			0
Biblopectus pusillus	1905	1905	1905			0
Biblopectus spinosus	1905	1905	1905			0
Euplectus karsteni	1922	1901	1922			0
Euplectus kirbyi	1905	1905	1905			0
Euplectus piceus	1990	1906	1990			1
Euplectus sanguineus	2012	1905	2012	1905	1905	3
Euplectus signatus	2009	2009	2009			1
Trichonyx sulcicollis	1835	1835	1835			0
Batrisus venustus	1903	1903	1903			0
Bythinus burrelli	2008	1905	2008	1944	1944	1
Bythinus macropalpus	1990	1845?	1901	1944	1990	1
Bryaxis bulbifer	2013	1898	2013	1905	2001	3
Bryaxis curtisi	2013	1904	2006	1944	2013	2
Bryaxis puncticollis	2014	1899	2014	1905	2013	4
Tychus niger	2013	1899	1996	2013	2013	2
Brachygluta fossulata	2007	1898	2007	1905	1990	2
Brachygluta haematica	2009	1845?	2009			1
Brachygluta pandellei	2000	2000	2000			1
Reichenbachia juncorum	2015	1899	2015	1905	1905	3
Rybaxis longicornis	2009			2009	2009	1
Trissemus impressus	1829	1829	1829			0
Pselaphaulax dresdensis	1988	1902	1977	1988	1988	1
Pselaphus heisei	2013	1899	2007	1971	2013	4
LUCANIDAE						
<i>Lucanus cervus</i>	1967	1908	1960	1908	1967	0
Sinodendron cylindricum	2015	1897	2015	1904	2014	5
TROGIDAE						
Trox sabulosus	1900	1900	1900			0
Trox scaber	2004	1905	2004			2
GEOTRUPIDAE						
Typhaeus typhoeus	2007	1899	2003	1905	2007	3
Geotrupes spiniger	2012	1901	2007	1905	2012	3
Geotrupes stercorarius	2012	1897	2012	1905	2006	3
Geotrupes stercorosus	2012	1897	2012	1904	2012	7
Geotrupes vernalis	2011	1898	2011	1964	1995	2
SCARABAEIDAE						
Aegialia arenaria	2013	1898	2013	1960	1985	3
Aegialia sabuleti	2004	1899	2004			2
Aphodius ater	2014	1898	2012	1904	2014	5

Species	Cumbria latest year	VC 70 Cumberland		VC 69 Westmorland		Frequency
		first year	last year	first year	last year	
Aphodius borealis	2002	1943	2002			3
Aphodius conspurcatus	1964	1899	1952?	1905	1964	0
Aphodius constans	1956	1940	1940	1904	1956	0
Aphodius contaminatus	2013	1898	2013	1905	2012	6
Aphodius depressus	2013	1897	2013	1864	2014	6
Aphodius distinctus	1951	1898	1951	1918	1918	0
Aphodius equestris	2014	1991	1991	2004	2014	3
Aphodius erraticus	2008	1899	2008	1905	1963	2
Aphodius fasciatus	2010	1909	2010	1955	1956	2
Aphodius fimetarius/pedellus	2014	1897	2007	1905	2014	4
Aphodius foetens	1991	1901	1991	1904	1960	2
Aphodius foetidus (= scybalarius)	2002	1905	2002	1993	1993	2
Aphodius fossor	2014	1897	2009	1905	2014	4
Aphodius granarius	2010	1835	2010	1985	2005	2
Aphodius haemorrhoidalis	2013	1905	1905	1985	2013	2
Aphodius ictericus	2013	1901	2000	1960	2013	2
Aphodius lapponum	2013	1865	2013	1904	2011	5
Aphodius luridus	2013	1899	2002	1955	2013	3
Aphodius merdarius	1991	1897	1991	1905	1960	1
Aphodius nemoralis	2013	1971	1987	1963	2013	2
Aphodius obliterated	2009	1905	2009	1964	2007	3
Aphodius paykulli	2009	1902	2009	1960	1964	2
Aphodius plagiatus	2007	1992	2007	1960	2007	3
Aphodius porcus	2008	1901	2008			1
Aphodius prodromus	2014	1897	2014	1960	2014	6
Aphodius pusillus	2014	1900	2014	1971	2013	2
Aphodius rufipes	2014	1897	2010	1905	2014	5
Aphodius rufus	2011	1901	1991	1985	2011	2
Aphodius sordidus	1830	1830	1830			0
Aphodius sphacelatus	2014	1897	2014	1905	2014	5
Aphodius subterraneus	1835	1835	1835			0
Psammodytes asper	1993			1993	1993	1
Onthophagus coenobita	2014			1986	2014	2
Onthophagus joannae	2014			1989	2014	2
Onthophagus nuchicornis	1835	1835	1920?			0
Onthophagus similis	2014	1898	2007	1963	2014	4
Serica brunnea	2014	1897	2014	1905	2011	3
Melolontha hippocastani	1914	1845	1914	1899	1899	0
Melolontha melolontha	2013	1897	2012	1905	2013	4
Hoplia philanthus	2012	1897	2010	1905	2012	3
Phyllopertha horticola	2014	1897	2011	1899	2014	5
Anomala dubia	2014	1898	2014	1960	1986	3
Cetonia aurata	2007			2003	2007	2
Gnorimus nobilis	1835	1835	1835			0
DASCILLIDAE						
Dascillus cervinus	2014	1894	2014	1904	2014	6
CLAMBIDAE						
Calyptomerus dubius	1907	1904	1907			0
Clambus armadillo	1911	1904	1911	1905	1905	0
Clambus evae	1913	1905	1905	1913	1913	0
Clambus nigrellus	1904	1904	1904			0
Clambus nigriclavus	1907	1904	1907			0
Clambus pubescens	2013	1901	1907	2013	2013	1
Clambus punctulus	1909	1909	1909			0
SCIRTIDAE						
Elodes marginata	2014	1894	2014	1865	2013	5

Species	Cumbria latest year	VC 70 Cumberland		VC 69 Westmorland		Frequency
		first year	last year	first year	last year	
<i>Elodes minuta</i> agg.	2014	1898	2014	1905	2012	3
<i>Elodes pseudominuta</i>	1905	1905	1905			0
<i>Microcara testacea</i>	2011	1898	2011	1971	2003	4
<i>Cyphon coarctatus</i>	2014	1901	2014	1905	2014	5
<i>Cyphon hilaris</i>	2014	1901?	2014	1971	2014	5
<i>Cyphon kongsbergensis</i>	2007	2000	2000	1999	2007	2
<i>Cyphon ochraceus</i>	2014	1905	2014	1980	2007	4
<i>Cyphon padi</i>	2014	1901	2014	1971	2010	4
<i>Cyphon palustris</i>	2004	1901	2004	1913	2008	3
<i>Cyphon phragmiteticola</i>	2014	1901?	2014	1905?	2014	3
<i>Cyphon pubescens</i>	2006	1902	2004	2001	2006	2
<i>Cyphon punctipennis</i>	2014	1901	2014			2
<i>Cyphon variabilis</i>	2014	1901	2014	1905	2013	4
<i>Prionocyphon serricornis</i>	2000			1998	2000	3
<i>Hydrocyphon deflexicollis</i>	2014	1899	2014	1864	2012	3
<i>Scirtes hemisphaericus</i>	2013	2005	2006	2013	2013	2
BYRRHIDAE						
<i>Simplocaria semistriata</i>	1997	1899	1997	1905	1960	2
<i>Morychus aeneus</i>	2004	1902	2004			2
<i>Cytilus sericeus</i>	2013	1897	2005	1905	2013	4
<i>Byrrhus arietinus</i>	2012	1901	2012	1971	1971	4
<i>Byrrhus fasciatus</i>	1990	1901	1990	1865	1905	1
<i>Byrrhus pilula</i>	2012	1897	2012	1904	2002	4
<i>Byrrhus pustulatus</i>	2014	1901	2014	1960	1988	2
<i>Curimopsis maritima</i>	1993			1960	1993	1
PSEPHENIDAE						
<i>Eubria palustris</i>	1993			1993	1993	1
HETERO CERIDAE						
<i>Heterocerus fenestratus</i>	1902	1902	1902	1960?	1960?	0
<i>Heterocerus flexuosus</i>	2010	1990	2010	1973	1990	3
<i>Heterocerus fossor</i>	2010	1999	2010	1929	1929	2
<i>Heterocerus marginatus</i>	2004	1901	2004			2
<i>Heterocerus maritimus</i>	2006	1900	2006	1993	2006	2
DRYOPIDAE						
<i>Pomatinus substriatus</i>	1990	1960	1990			1
<i>Dryops ernesti</i>	2012	1898	2012	1905	2007	4
<i>Dryops luridus</i>	2012	1899	2012	1960	2012	4
<i>Dryops nitidulus</i>	1971			1971	1971	0
<i>Dryops striatellus</i>	2010	1901	1985	2010	2010	2
ELMIDAE						
<i>Elmis aenea</i>	2011	1900	2011	1865	2008	3
<i>Esolus parallelepipedus</i>	2004	1845	2004	1913	1913	2
<i>Limnius volckmari</i>	2008	1900	2004	1905	2008	3
<i>Normandia nitens</i>	1905	1901	1905			0
<i>Oulimnius troglodytes</i>	2000	1981	2000	1963	1963	2
<i>Oulimnius tuberculatus</i>	2008	1900	2005	1905	2008	4
<i>Riolus cupreus</i>	1995	1845	1995	1967	1977	2
<i>Riolus subviolaceus</i>	2007	1900	2000	1865	2007	2
<i>Stenelmis canaliculata</i>	1978			1960	1978	0
BUPRESTIDAE						
<i>Buprestis aurulenta</i>	1948	1948	1948			0
<i>Trachys subglaber</i>	1991	1991	1991			1
ELATERIDAE						
<i>Agrypnus murinus</i>	2014	1898	2014	1972	2006	3
<i>Hypnoidus riparius</i>	2014	1894	2014	1905	2013	7
<i>Actenicerus sjaelandicus</i>	2014	1894	2014	1864	2006	3

Species	Cumbria latest year	VC 70 Cumberland		VC 69 Westmorland		Frequency
		first year	last year	first year	last year	
<i>Ctenicera cuprea</i>	2013	1894	2013	1865	2013	5
<i>Ctenicera pectinicornis</i>	1996	1903	1996	1865	1996	2
<i>Aplotarsus incanus</i>	2014	1898	2014	1865	2013	6
<i>Paraphotistus impressus</i>	2008	1845	2008	2003	2003	2
<i>Prosternon tessellatum</i>	2005	1909	2005	1865	2006	3
<i>Selatosomus aeneus</i>	2013	1980	1993	1910	2013	2
<i>Cidnopus aeruginosus</i>	2008	1897	2008	2002	2007	4
<i>Kibunea minuta</i>	2002	1894	2000	2002	2002	3
<i>Denticollis linearis</i>	2014	1898	2014	1899	2014	5
<i>Athous bicolor</i>	1835	1835	1835			0
<i>Athous haemorrhoidalis</i>	2014	1897	2014	1905	2014	6
<i>Athous subfuscus</i>	2014	2014	2014			1
<i>Athous vittatus</i>	2012	1894	2014	1905	2013	5
<i>Diacanthous undulatus</i>	2003			2003	2003	1
<i>Hemicrepidius hirtus</i>	2013	1894	2008	1904	2013	4
<i>Adrastus pallens</i>	2013	1897	2008	1971	2013	3
<i>Synaptus filiformis</i>	2007			2003	2007	2
<i>Agriotes acuminatus</i>	2013	1845	2013	1971	2013	4
<i>Agriotes lineatus</i>	2007	1898	2007	1987	1987	3
<i>Agriotes obscurus</i>	2014	1897	2014	1905	2014	5
<i>Agriotes pallidulus</i>	2014	1898	2013	1905	2014	6
<i>Agriotes sputator</i>	2013	1897	2006	1993	2013	2
<i>Dalopius marginatus</i>	2014	1897	2014	1905	2014	6
<i>Ampedus balteatus</i>	2005	1897	2005	1913	2005	3
<i>Ampedus nigrinus</i>	2013	1928	2009	1941	2013	3
<i>Ampedus pomorum</i>	2006			1971	2006	2
<i>Sericus brunneus</i>	2005	1894	1989	1913	2005	2
<i>Melanotus castanipes</i>	2012	1897	2013	1910	2012	4
<i>Fleutiauxellus maritimus</i>	2004	1902	2004	2004	2004	3
<i>Negastrius sabulicola</i>	2004	1911	2004	2004	2004	2
<i>Zoroachros minimus</i>	2008	1898	2008	1905	2004	5
<i>Cardiophorus gramineus</i>	1835	1835	1835			0
THROSCIDAE						
<i>Trixagus dermestoides</i>	2013	1901	2002	1913	2013	3
<i>Trixagus carinifrons</i>	2002			2001	2002	2
EUCNEMIDAE						
<i>Melasis buprestoides</i>	1989			1989	1989	1
<i>Microrhagus pygmaeus</i>	1993			1971	1993	2
CANTHARIDAE						
<i>Podabrus alpinus</i>	2014	1898	2014	1899	2013	4
<i>Ancistronycha abdominalis</i>	1999	1897	1997	1864	1999	2
<i>Cantharis cryptica</i>	2014	1897	2014	1905	2012	5
<i>Cantharis decipiens</i>	2014	1897	2014	1905	2013	6
<i>Cantharis figurata</i>	2014	1899	2014	1899	2011	3
<i>Cantharis fusca</i>	2006	2006	2006			1
<i>Cantharis lateralis</i>	2011	1943	1987	1998	2011	2
<i>Cantharis livida</i>	2013	1897	2004	1905	2013	4
<i>Cantharis nigra</i>	2014	1897	2014	1913	2013	6
<i>Cantharis nigricans</i>	2014	1897	2014	1905	2014	6
<i>Cantharis obscura</i>	2008	1898	2006	1899	2008	4
<i>Cantharis pallida</i>	2014	1990	2014	1971	2013	5
<i>Cantharis paludosa</i>	2013	1900	2002	1904	2013	3
<i>Cantharis pellucida</i>	2014	1898	2014	1971	2014	6
<i>Cantharis rufa</i>	2012	1898	2012	1905	2010	4
<i>Cantharis rufa darwiniana</i>	1907	1898	1907			0
<i>Cantharis rustica</i>	2014	1897	2014	1905	2014	3

Species	Cumbria latest year	VC 70 Cumberland		VC 69 Westmorland		Frequency
		first year	last year	first year	last year	
Cantharis thoracica	2011	1835	2004	1971	2011	3
Rhagonycha fulva	2014	1897	2014	1971	2014	7
Rhagonycha lignosa	2014	1897	2014	1905	2013	5
Rhagonycha limbata	2014	1899	2014	1905	2014	5
Rhagonycha testacea	2014	1835	2014	1971	2010	4
Rhagonycha translucida	2011	1913	1996	1999	2011	2
Malthinus balteatus	1993			1913	1993	1
Malthinus flaveolus	2011	1898	2011	1905	2011	3
Malthinus frontalis	1960	1900	1960			0
Malthinus seriepunctatus	2001			1905	2001	1
Malthodes dispar	2007	1903	2007	1993	1993	4
Malthodes fibulatus	1905			1905	1905	0
Malthodes flavoguttatus	2014	1901	2014	1905	2012	4
Malthodes fuscus	2007	1901	1993	1913	2007	2
Malthodes guttifer	2004	1901	2004	1980	1993	2
Malthodes marginatus	2014	1898	2014	1865	2014	6
Malthodes maurus	2011	2011	2011	1993	1993	2
Malthodes minimus	2008	1905	2008	1903	1998	2
Malthodes mysticus	2007	1901	2011	1971	2007	5
Malthodes pumilus	1993	1902	1993	1905	1918	2
LYCIDAE						
Platycis minutus	1997			1997	1997	1
LAMPYRIDAE						
Lampyris noctiluca	2013	1897	2008	1802	2013	3
DERMESTIDAE						
Dermestes frischii	1953	1953	1953			0
Dermestes maculatus	1910	1910	1910			0
Dermestes murinus	2005	2005	2005	1960	1985	2
Dermestes lardarius	1922	1899	1922	1905	1905	0
Attagenus pello	1988	1899	1988	1905	1973	2
Ctesias serra	1988	1907	1987	1988	1988	2
Anthrenus museorum	1993	1907	1910	1993	1993	1
Anthrenus fuscus	2013	1989	1989	1983	2013	2
Anthrenus verbasci	2011	1989	2008	1978	2011	2
DERODONTIDAE						
Laricobius erichsoni	2011	1995	2011	1997	1997	3
ANOBIIDAE						
Hedobia imperialis	1915	1905	1915			0
Grynobius planus	2013	1901	2012	1905	2013	4
Dryophilus pusillus	2008	1900	2008	1905	1989	3
Ochina ptinoides	1960	1901	1924	1905	1960	0
Xestobium rufovillosum	1835	1835	1835			0
Ernobius mollis	2005	1899	2005	1905	1905	2
Ernobius nigrinus	1990	1936	1936	1990	1990	1
Stegobium paniceum	1905	1905	1994?			1
Anobium fulvicorne	2012	2012	2012			1
Anobium inexpectatum	1992	1982	1982	1992	1992	1
Anobium punctatum	2014	1901	2014	1905	2002	6
Ptilinus pectinicornis	1999	1999	1999	1991	1991	2
Lasioderma serricorne	2008	2008	2008			1
Caenocara bovistae	1964			1964	1964	0
PTINIDAE						
Gibbium psylloides	1908	1897	1908			0
Mezium affine	1915	1915	1915			0
Trigonogenius globulus	1915	1901	1915			0
Niptus hololeucus	1998	1897	1998	1905	1960	1

Species	Cumbria latest year	VC 70 Cumberland		VC 69 Westmorland		Frequency
		first year	last year	first year	last year	
Tipnus unicolor	1905	1901	1905	1905	1905	0
Ptinus sexpunctatus	1835	1835	1835			0
Ptinus fur	1995	1897	1960	1905	1995	1
Ptinus lichenum	1960			1960	1960	0
Ptinus subpilosus	1905	1902	1905			0
Ptinus tectus	2004	1905	2004	1905	1960	1
BOSTRICHIDAE						
Bostrichus capucinus (imported)	1912	1912	1912			0
LYCTIDAE						
Lyctus linearis	1919	1919	1919			0
Lyctus brunneus	2009	2009	2009			1
PHLOIOPHILIDAE						
Phloiophilus edwardsi	2002	1902	2002			2
TROGOSSITIDAE						
Tenebroides mauritanicus	1960	1897	1960			0
PELTIDAE						
Thymalus limbatus	2006			1964	2006	3
CLERIDAE						
Tillus elongatus	1835	1835	1835			0
Thanasimus formicarius	1996	1980	1980	1965	1996	2
Necrobia ruficollis	2003	1901	2003			1
Necrobia rufipes	1907	1907	1907			0
Necrobia violacea	2012	1901	2012	1905	1971	3
MELYRIDAE						
Aplocnemus pini	1910	1906	1910			0
Dasytes aeratus	2012	1898	1996	1905	2012	3
Psilothrix viridicoeruleus	1997	1921	1997	1955	1960	1
Malachius bipustulatus	2005	1897	2005	1905	2000	3
Malachius viridis	1835	1835	1835			0
Anthocomus fasciatus	1835	1835	1835			0
LYMEXYLIDAE						
Hylecoetus dermestoides	2012	2001	2001	2003	2012	2
NITIDULIDAE						
Kateretes bipustulatus	2012	1901	1992	1905	2012	2
Kateretes pedicularius	1993	1898	1993	1905	1907	1
Kateretes rufilabris	2014	1898	2014	1991	2010	5
Brachypterus glaber	2014	1898	2014	1905	2013	4
Brachypterus urticae	2014	1901	2014	1905	2014	4
Brachypterolus linariae	2001	2001	2001			1
Brachypterolus pulicarius	2014	1987	2014	2014	2014	2
Carpophilus marginellus	1992	1992	1992			1
Pria dulcamarae	1909	1909	1909			0
Meligethes aeneus	2014	1897	2014	1905	2012	7
Meligethes atratus	2012	1909	1994	1913	2012	3
Meligethes bidens	2002	1909	1994			2
Meligethes brunnicornis	2012	1924	2012	c.1949	c.1949	2
Meligethes difficilis	1999	1972	1999	c.1949	c.1949	1
Meligethes erythropus	2006	1901	2006	1905	1971	2
Meligethes exilis	2002	1901	2002			2
Meligethes flavimanus	2014	1899	2014	1905	2013	4
Meligethes persicus	2013	1993	2013			2
Meligethes lugubris	2009			1955	2009	2
Meligethes morosus	c.1949	c.1949	c.1949	c.1949	c.1949	0
Meligethes nigrescens	2012	1901	2012	1905	2007	3
Meligethes obscurus	2014	1930	1993	1913	2014	2
Meligethes viduatus	2008	1901	2008	1905	1913	2

Species	Cumbria latest year	VC 70 Cumberland		VC 69 Westmorland		Frequency
		first year	last year	first year	last year	
Meligethes subrugosus	1910	1908	1910			0
Meligethes umbrosus	1907	1907	1907			0
Meligethes viridescens	2004	1901	2004	1905	1960	2
Epuraea terminalis	1910	1910	1910			0
Epuraea aestiva	2014	1897	2014	1905	2012	6
Epuraea angustula	1971			1971	1971	0
Epuraea biguttata	2013	1898	2013	1988	2007	3
Epuraea distincta	2012	2012	2012			2
Epuraea florea	1905	1901	1903	1905	1905	0
Epuraea limbata	2003	1845	2003			1
Epuraea melanocephala	2013	1935	2013	1971	2012	6
Epuraea melina	2014	1903	2014	1905	2008	4
Epuraea pusilla	2013	1901	1932	1971	2013	2
Epuraea rufomarginata	2001	1901	1994	2001	2001	2
Epuraea silacea	2013	1903	2013	1865	2009	4
Nitidula bipunctata	2013	1898	2011	1905	2013	2
Omosita colon	2007	1898	2007	1963	1993	2
Omosita depressa	2013	1899	2011	1905	2013	3
Omosita discoidea	2013	1898	2011	1960	2013	2
Soronia grisea	1918	1899	1918	1905	1905	0
Soronia punctatissima	2006	2003	2006	1962	1970	2
Pocadius ferrugineus	2007	1901	2007			3
Thalycra ferrida	1918	1918	1918			0
Cychramus luteus	2014	1898	2014	1964	2010	2
Pityophagus ferrugineus	1988	1901	1988			1
Glischrochilus hortensis	1920	1899	1920			0
Glischrochilus quadriguttatus	2000	1845	1994	1968	2000	2
Glischrochilus quadripunctatus	2010	1921	2010	2003	2003	2
RHIZOPHAGIDAE						
Rhizophagus bipustulatus	2012	1897	2011	1905	2012	4
Rhizophagus cribratus	1913	1898	1913	1905	1905	0
Rhizophagus depressus	2012	1900	1976	1971	2012	1
Rhizophagus dispar	2014	1899	2014	1971	2012	6
Rhizophagus ferrugineus	2008	1901	2008	1945	1993	3
Rhizophagus nitidulus	2013	1996	2013	1971	2012	4
Rhizophagus parallelocollis	1990	1901	1990			1
Rhizophagus perforatus	2009	1992	2009			2
Rhizophagus picipes	1971			1971	1971	0
Cyanostolus aeneus	1991	1991	1991			1
Monotoma angusticollis	1906	1906	1906	pre 1977	pre 1977	0
Monotoma bicolor	2014	1914	2014			3
Monotoma conicicollis	1992	1906	1992	1979	1979	1
Monotoma longicollis	2013	1906	1992	2013	2013	2
Monotoma picipes	2013	1901	2008	1905	2013	3
SPHINDIDAE						
Aspidiphorus orbiculatus	2003	1903	2003			1
CUCUJIDAE						
Pediacus depressus	1988			1988	1988	1
LAEMOPHLOEIDAE						
Cryptolestes ferrugineus	2009	1905	2009			1
Cryptolestes pusillus	1908	1905	1908	1905	1905	0
SILVANIDAE						
Ahasverus advena	2009	1913	2009			1
Oryzaeophilus surinamensis	1960	1900	1908	1905	1960	0
Uleiota planata	1906	1906	1906			0
CRYPTOPHAGIDAE						

Species	Cumbria latest year	VC 70 Cumberland		VC 69 Westmorland		Frequency
		first year	last year	first year	last year	
Telmatophilus caricis	2012	1907	2012	1960	1993	4
Telmatophilus typhae	2013	1997	2006	1971	2013	3
Paramecosoma melanocephalum	2008	1897	2005	1905	2008	2
Henoticus serratus	1927	1835	2015	1989	1989	2
Cryptophagus acuminatus	1901	1901	1901			0
Cryptophagus acutangulus	2008	1907	2008			1
Cryptophagus angustus	1905	1905	1905			0
Cryptophagus cellaris	1960	1905	1926	1905	1960	0
Cryptophagus dentatus	2008	1915	2008	1905	2008	3
Cryptophagus distinguendus	2008	1905	2008	1905	1905	1
Cryptophagus laticollis	2002	1901	2002	1905	1905	2
Cryptophagus lycoperdi	2013	1903	2013	1964	1971	2
Cryptophagus pallidus	1991	1905	1991			1
Cryptophagus pilosus	2009	1906	2009	1905	1999	3
Cryptophagus postpositus	2008	1905	2008			1
Cryptophagus pseudodentatus	1994	1898	1994	1900	1907	2
Cryptophagus pubescens	1993	1907	1993	1960	1960	1
Cryptophagus ruficornis	1958	1958	1958			0
Cryptophagus saginatus	2009	1898	2009			2
Cryptophagus scanicus	2010	1898	2010	1905	1905	1
Cryptophagus scutellatus	2008	1906	2008			2
Cryptophagus setulosus	2009	1898	2009	1907	1907	1
Cryptophagus subdepressus	1947	1900	1947			0
Micrambe villosus	2006	1901	2006			2
Micrambe vini	2014	1897	2014	1905	2013	5
Antherophagus nigricornis	2006	1899	2005	1995	2006	4
Antherophagus pallens	2012	1898	2012	1905	1986	3
Caenoscelis ferruginea	1927	1924	1927			0
Atomaria apicalis	2014	1901	2014	1905	2013	3
Atomaria atra	2009	1907	1992	2009	2009	2
Atomaria atricapilla	2013	1903	2013	1905	2013	4
Atomaria rubella	2014	1901	2014	1987	1987	2
Atomaria clavigera	1924	1924	1924			0
Atomaria fuscata	2012	1899	2012	1905	2010	5
Atomaria fuscipes	1943	1905	1943	1905	1907	0
Atomaria lewisi	2013	1991	2012	1960	2013	3
Atomaria mesomela	2010	1905	1998	1905	2010	2
Atomaria munda	1985	1906	1980	1985	1985	1
Atomaria nigripennis	1906	1906	1906			0
Atomaria nitidula	2013	1899	1993	1905	2013	2
Atomaria pusilla	1997	1899	1997	1905	1905	1
Atomaria rubida	1971	1901	1915	1971	1971	0
Atomaria testacea	2014	1901	2014	1987?	2014	5
Atomaria turgida	1996			1996	1996	1
Atomaria diluta	1907	1905	1907			0
Atomaria fimetarii	1908	1908	1908			0
Atomaria impressa	1845	1845	1845			0
Atomaria nigrirostris	2010	1906	2010	1905	1971	1
Atomaria pulchra	1943	1906	1943			0
Atomaria punctithorax	1908	1908	1908			0
Atomaria strandi	1904	1904	1904			0
Ootypus globosus	1925	1845	1925			0
Ephistemus globulus	2012	1899	2012	1905	1986	3
BYTURIDAE						
Byturus ochraceus	2012			2012	2012	1
Byturus tomentosus	2014	1897	2014	1905	2014	6

Species	Cumbria latest year	VC 70 Cumberland		VC 69 Westmorland		Frequency
		first year	last year	first year	last year	
EROTYLIDAE						
Triplax aenea	2013	1942	2013	1960	2003	3
Tritoma bipustulata	2012			1956	2012	2
Dacne bipustulata	1973	1954	1954	1973	1973	0
Dacne rufifrons	2007	2006	2007			1
BIPHYLLIDAE						
Biphyllus lunatus	2007			2007	2007	1
PHALACRIDAE						
Olibrus aeneus	2002	1907	2002			2
Olibrus affinis	2007	2006	2007			2
Olibrus liquidus	2010	2006	2006	2010	2010	2
CERYLONIDAE						
Cerylon fagi	2012			1989	2012	2
Cerylon ferrugineum	2013	1918	2013	1971	2008	4
Cerylon histeroideus	2013	1897	2013	1905	2012	4
CORYLOPHIDAE						
Orthoperus atomus	1910	1907	1910			0
Sericoderus lateralis	2012	2008	2012			2
COCCINELLIDAE						
Subcoccinella 24-punctata	2014	1902	2014	1963	2013	7
Coccidula rufa	2014	1897	2014	1905	2012	6
Rhyzobius litura	2013	1897	2011	1985	2013	5
Scymnus frontalis	2014	1901	2014	1960	1960	1
Scymnus interruptus	2009	2009	2009			1
Scymnus nigrinus	2004	1899	1991	1971	2004	2
Scymnus schmidti	2011	1900	2011	1960?	1995	2
Scymnus auritus	1835	1835	1835			0
Scymnus haemorrhoidalis	2000	1904	2000			1
<i>Scymnus limbatus</i>	1981			1981	1981	0
Scymnus suturalis	2010	1914	2010	1905	2004	3
<i>Nephus quadrimaculatus</i>	2002	2001	2002	2001	2001	2
<i>Nephus redtenbacheri</i>	2010	1915?	2010	2008	2008	2
<i>Hyperaspis pseudopustulata</i>	2015	1904	2007	1905	2015	3
<i>Chilocorus bipustulatus</i>	2008	1897	2008	1964	2007	3
<i>Chilocorus renipustulatus</i>	2012	1901	2012	1991	2012	4
<i>Exochomus quadripustulatus</i>	2014	1835	2014	1971	2006	4
<i>Hippodamia tredecimpunctata</i>	1835	1835	1835			0
<i>Hippodamia variegata</i>	1989	1921	1989	1960	1970	1
<i>Anisosticta novemdecimpunctata</i>	2010	1932	2005	?	2010	3
<i>Aphidecta oblitterata</i>	2014	1899	2014	1905	2007	7
<i>Tytthaspis sedecimpunctata</i>	2014	1835	1835	1986	2014	3
<i>Adalia bipunctata</i>	2014	1897	2014	1971	2013	5
<i>Adalia decempunctata</i>	2014	1897	2014	1905	2012	7
<i>Coccinella magnifica</i>	1990			1990	1990	1
<i>Coccinella hieroglyphica</i>	2008	1897	2008	1905	2004	4
<i>Coccinella quinquepunctata</i>	1922	1835	1922			0
<i>Coccinella septempunctata</i>	2015	1897	2015	1905	2014	7
<i>Coccinella undecimpunctata</i>	2015	1897	2014	1960	2014	5
<i>Harmonia axyridis</i>	2016	2012	2016	2012	2014	2
<i>Anatis ocellata</i>	2007	1897	2005	1944	2007	4
<i>Myrrha octodecimguttata</i>	2008	1897	2005	1905	2008	3
<i>Calvia quattuordecimguttata</i>	2014	1897	2014	1971	2014	6
<i>Propylea quattuordecimpunctata</i>	2014	1835	2012	1964	2014	5
<i>Myzia oblongoguttata</i>	2010	1897	2008	1905	2010	4
<i>Halyzia sedecimguttata</i>	2014	1845	2014	1990	2012	5
<i>Psyllobora vigintiduopunctata</i>	2010	1897	2010	c.1980	2010	5

Species	Cumbria latest year	VC 70 Cumberland		VC 69 Westmorland		Frequency
		first year	last year	first year	last year	
ENDOMYCHIDAE						
<i>Sphaerosoma piliferum</i>	2012	1906	1907	2012	2012	1
<i>Mycetaea hirta</i>	2010	1906	2010	1905	1905	3
<i>Endomychus coccineus</i>	2007	1830	1989	2007	2007	2
LATHRIDIIDAE						
<i>Lithostygnus serripennis</i>	1995	1995	1995			1
<i>Stephostethus lardarius</i>	2011	1899	2006	1905	2011	3
<i>Cartodere constricta</i>	2012	2012	2012			1
<i>Aridius bifasciatus</i>	2014	1990	2008	2014	2014	5
<i>Aridius nodifer</i>	2014	1901	2013	1905	2014	6
<i>Lathridius anthracinus</i>	1999	1999	1999			1
<i>Lathridius pseudominutus</i>	2009	1901	2009	1905	1913	2
<i>Thes bergrothi</i>	1907	1907	1907			0
<i>Enicmus brevicornis</i>	1906	1905	1906			0
<i>Enicmus fungicola</i>	1993	1901	1906	1993	1993	1
<i>Enicmus histrio</i>	2010	1910	1997	1905	2010	2
<i>Enicmus rugosus</i>	2005	2005	2005			1
<i>Enicmus testaceus</i>	1917	1905	1917			0
<i>Enicmus transversus</i>	1993	1901	1993	1905	1907	2
<i>Dienerella elongata</i>	1960			1960	1960	0
<i>Dienerella filiformis</i>	1906	1906	1906			0
<i>Dienerella ruficollis</i>	1920	1906	1920			0
<i>Corticaria crenulata</i>	1995	1909	1995	1986	1986	2
<i>Corticaria elongata</i>	2010	1901	2010	1905	1996	2
<i>Corticaria ferruginea</i>	1925	1906	1925			0
<i>Corticaria fulva</i>	1910	1910	1910			0
<i>Corticaria impressa</i>	2004	1903	2004	1905	1960	1
<i>Corticaria punctulata</i>	1909	1898	1909			0
<i>Corticaria serrata</i>	1922	1922	1922			0
<i>Corticarina fuscula</i>	2011	1899	2011	1986	2010	3
<i>Corticinara gibbosa</i>	2014	1901	2014	1905	1986	5
<i>Melanophthalma curticolis</i>	2013			2013	2013	1
CISIDAE						
<i>Octotemnus glabriculus</i>	2015	1899	2015	1905	2014	5
<i>Sulcaxis affinis</i>	1991	1991	1991			1
<i>Cis alni</i>	2006	1901	2006			1
<i>Cis festivus</i>	1989	1845?	1989			1
<i>Cis pygmaeus</i>	1991	1991	1991			1
<i>Cis bidentatus</i>	2008	1903	2012	1992	2008	4
<i>Cis bilamellatus</i>	2015	1990	2015	1997	2002	3
<i>Cis boleti</i>	2014	1897	2012	1905	2014	5
<i>Cis hispidus</i>	2015	1907	2015			2
<i>Cis lineatocribratus</i>	1907	1907	1907			0
<i>Cis submicans</i>	2015	1907	1907			1
<i>Cis nitidus</i>	2009	1899	2009	1905	2006	3
<i>Cis punctulatus</i>	1907	1907	1907			0
<i>Cis vestitus</i>	2009	2009	2009			1
<i>Cis villosulus</i>	2011			2011	2011	1
<i>Ennearthron cornutum</i>	2012	1993	2012	2006	2006	2
MYCETOPHAGIDAE						
<i>Pseudotriphyllus suturalis</i>	2000	1900	1926	1905	2000	1
<i>Litargus connexus</i>	2003			1971	2003	1
<i>Mycetophagus multipunctatus</i>	1903	1901	1903			0
<i>Mycetophagus atomarius</i>	2005	1905	2005	1988	2002	2
<i>Mycetophagus piceus</i>	2008	2008	2008			1
<i>Mycetophagus quadripustulatus</i>	1999	1900	1999	1905	1905	1

Species	Cumbria latest year	VC 70 Cumberland		VC 69 Westmorland		Frequency
		first year	last year	first year	last year	
Typhaea stercorea	2010	1899	2010	1905	1991	3
COLYDIIDAE						
Orthocerus clavicornis	2003	1985	2003			2
Synchita humeralis	1971			1971	1993	1
Bitoma crenata	1927	1927	1927			0
TENEBRIONIDAE						
Blaps lethifera	1900	1900	1900			0
Blaps mucronata	2005	1901	2005	1905	1907	1
Phylan gibbus	2014	1897	2014	1960	2007	4
Melanimon tibialis	2005	1899	2005	1960	1992	3
Opatrum sabulosum	2010	1992	2010			2
Phaleria cadaverina	2008	1909	2008	2007	2007	3
Diaperis boleti	1907	1835	1907			0
Gnatocerus cornutus	1953	1905	1953	1905	1905	0
Tribolium castaneum	1908	1899	1908	1905	1905	0
Tribolium confusum	1953	1903	1953	1905	1905	0
Latheticus oryzae	1905	1905	1905	1905	1905	0
Palorus ratzeburgi	1960	1960	1960			0
<i>Palorus subdepressus</i>	1953	1953	1953			0
Alphitobius diaperinus	1917	1909	1917			0
Tenebrio molitor	1897	1897	2006?			1
Tenebrio obscurus	1942	1901	1942			0
Helops caeruleus	1835	1835	1835			0
Cylindrinotus laevioctostriatus	2001	1898	2001			1
Cylindrinotus pallidus	2010	2004	2010			2
Lagria hirta	2014	1901	2014	2007	2007	3
Gonodera luperus	2012			1954	2012	1
TETRATOMIDAE						
Isomira murina	2012	1904	2007	1905	2012	3
Cteniopus sulphureus	1989			c.1870	1989	1
Tetratoma ancora	1908	1902	1908			0
Tetratoma desmaresti	1907	1907	1907			0
Tetratoma fungorum	2003	1903	2003			2
SALPINGIDAE						
Rabocerus gabrieli	2005	1902	2005	1988	1993	2
Salpingus castaneus	2003	1901	2003	1905	1993	2
Salpingus ater	1960	1906	1960	1905	1906	0
Vincenzellus ruficollis	2009	1899	2009	1905	1993	2
Rhinosimus planirostris	2013	1897	2013	1905	2003	5
Rhinosimus ruficollis	1992	1899	1992	1905	1964	1
PYROCHROIDAE						
Pyrochroa coccinea	2014	1993	1993	1958	2014	3
Pyrochroa serraticornis	2013	1896	2012	1971	2013	6
MELANDRYIDAE						
Hallomenus binotatus	1986	1986	1986			1
Orchesia micans	2007	1906	2007			2
Orchesia minor	2013	1845	1998	1988	2013	3
Orchesia undulata	2009	1903	2007	1971	2009	4
Abdera flexuosa	2014	1905	2014	1988	1996	3
Melandrya caraboides	2014	1897	2012	1899	2014	3
<i>Conopalpus testaceus</i>	1835	1835	1835			0
SCRAPTIIDAE						
Scraptia testacea	1907	1907	1907			0
Anaspis frontalis	2014	1897	2014	1905	2014	5
Anaspis garneysi	2012	1905	2012	1905	2012	3
Anaspis humeralis	2012	1901	1999	1905	2012	3

Species	Cumbria latest year	VC 70 Cumberland		VC 69 Westmorland		Frequency
		first year	last year	first year	last year	
Anaspis lurida	2002	1903	1903	2002	2002	1
Anaspis maculata	2014	1897	2014	1905	2014	7
Anaspis regimbarti	2014	1897	2014	1905	2013	5
Anaspis rufilabris	2013	1901	2013	1905	2013	6
Anaspis thoracica	1924	1905	1924			0
RHIPIPHORIDAE						
Metoecus paradoxus	1999	1901	1999	1995	1995	2
OEDEMERIDAE						
Nacerdes melanura	2011	1901	2009	1986	2011	2
Ischnomera cinarescens	2011			2011	2011	1
Oncomera femorata	2001			1924	2001	1
Oedemera lurida	2014	1907	2014	1913	2014	5
Oedemera nobilis	2005	1899?	2005			2
MELOIDAE						
Meloe proscarabaeus	2010	1898	2010	1905	1998	2
Meloe violaceus	2003	1925	2003	1899	1998	3
ANTHICIDAE						
Notoxus monoceros	2014	1909	2014	1992	2010	3
Anthicus bimaculatus	1995			1995	1995	1
Anthicus constrictus	2001	1909	2001			1
Anthicus floralis	2013	1898	2008	1905	2013	3
Anthicus formicarius	2009	1901	2009			3
Anthicus scoticus	2010	1897	2010			2
Anthicus tobias	2013			2013	2013	1
CERAMBYCIDAE						
Asemum striatum	2006	1896	2006	1957	2002	3
Tetropium castaneum	2010	2008	2009			2
Tetropium gabrieli	2009	1934	2009	1947	1947	1
Rhagium bifasciatum	2014	1896	2014	1904	2014	5
Rhagium mordax	2014	1897	2009	1958	2014	5
Stenocorus meridianus	1918	1901	1907	1898	1918	0
Grammoptera ruficornis	2014	1898	2014	1904	2013	5
Alosterna tabacicolor	2014	1903	2014	1905	1905	3
Pachytodes cerambyciformis	2012	1835	2012			2
Rutpela maculata	2014	1835	2014	1958	2002	5
Strangalia melanura	2011	1897	1998	1978	2011	2
Strangalia quadrifasciata	2011	1835	2002	1945	2011	3
<i>Cerambyx cerdo (imported)</i>	1940	1920	1940			0
Gracilia minuta	1925	1925	1925			0
Molorchus umbellatarum	1958			1958	1958	0
Aromia moschata	1906	1898	1906	2009?	2009?	1
Callidium violaceum	1916	1899	1916			0
Phymatodes alni	1835	1835	1835			0
Phymatodes testaceus	1958	1958	1958			0
Clytus arietis	2012	1896	2012	1905	2012	4
Plagionotus arcuatus	1911	1835	1911			0
<i>Monochamus sartor (imported)</i>	1935	1934	1935			0
<i>Monochamus sutor (imported)</i>	1934	1934	1934			0
Pogonocherus hispidulus	2009	1901	2009	1905	2007	3
Pogonocherus hispidus	1997	1835	1930	1945	1997	2
Leiopus nebulosus	2012	1896	1960	1904	2012	3
Acanthocinus aedilis	1906	1905	1906			0
Saperda populnea	1959	1899	1959	pre1948?	pre1948?	0
Saperda scalaris	2005	1835	2005			1
Stenostola dubia	1993	1903	1976	1993	1993	1
Tetrops praeusta	2005	1901	1991	1905	2005	2

Species	Cumbria latest year	VC 70 Cumberland		VC 69 Westmorland		Frequency
		first year	last year	first year	last year	
BRUCHIDAE						
<i>Bruchus loti</i>	2005	1993	1998	1993	2005	2
<i>Bruchus pisorum</i>	1917	1910	1917			0
<i>Bruchus rufimanus</i>	1905	1835	1905			0
<i>Bruchidius cisti</i>	2013			c.1975	2013	2
<i>Bruchidius villosus</i>	2004	2004	2004			2
<i>Acanthoscelides obtectus</i>	1914	1914	1914			0
<i>Callosobruchus chinensis</i>	1905			1905	1905	0
ORSODACNIDAE						
<i>Orsodacne cerasi</i>	2008			2007	2008	2
CHRYSOMELIDAE						
<i>Macrolea appendiculata</i>	1994	1911	1994			2
<i>Donacia aquatica</i>	2005	1898	1991	1864	2005	2
<i>Donacia cinerea</i>	1904			1904	1904	0
<i>Donacia clavipes</i>	1993			1905	1993	1
<i>Donacia crassipes</i>	1835	1835	1835	1880?	1880?	0
<i>Donacia dentata</i>	1835	1835	1835			0
<i>Donacia impressa</i>	2005	1905	2005	1963	2004	2
<i>Donacia obscura</i>	2013	1902	2013	1987	2005	2
<i>Donacia semicuprea</i>	2015	2015	2015	2007	2007	2
<i>Donacia simplex</i>	2011	1897	2013	1905	2001	3
<i>Donacia thalassina</i>	2004	1993	1995	1904	2004	3
<i>Donacia versicolore</i>	2012	1900	2010	1991	2012	3
<i>Donacia vulgaris</i>	2011	1981	2011	1993	1993	2
<i>Plateumaris affinis</i>	2000	1900	1991	1864	2000	2
<i>Plateumaris discolor</i>	2013	1894	2010	1904	2013	5
<i>Plateumaris sericea</i>	2013	1898	2009	1904	2013	3
<i>Zeugophora subspinosa</i>	1993	1898	1993			1
<i>Zeugophora flavicollis</i>	c.1860			c.1860	c.1860	0
<i>Lema cyanella (puncticollis)</i>	2014	2004	2013	1971	2014	3
<i>Oulema obscura</i>	2014	1897	2014	1905	2014	7
<i>Oulema melanopa agg.</i>	2014	1901	2014	1960	2014	5
<i>Oulema rufocyanea</i>	2014	1898	1978	2014	2014	1
<i>Crioceris asparagi</i>	1835	1835	1835			0
<i>Lilioceris lili</i>	2012	2012	2012			2
<i>Clytra quadripunctata</i>	2011	1897	2011	1975	2007	2
<i>Cryptocephalus aureolus</i>	2014	1909	1979	1946	2014	3
<i>Cryptocephalus bipunctatus</i>	2007			1941	2007	3
<i>Cryptocephalus fulvus</i>	1985	1835	1985			1
<i>Cryptocephalus hypochaeridis</i>	1975			1975	1975	0
<i>Cryptocephalus labiatus</i>	2013	1901	2010	1865	2013	5
<i>Cryptocephalus moraei</i>	2007	1979	1996	1865	2007	2
<i>Cryptocephalus parvulus</i>	2012	1978	1978	1964	2012	1
<i>Cryptocephalus pusillus</i>	2011	1908	2008	1971	2011	3
<i>Lamprosoma concolor</i>	1971	1935	1935	1971	1971	0
<i>Timarcha tenebricosa</i>	2010	1908	2010	1918	1990	2
<i>Chrysolina banksi</i>	2008	1989	2008			3
<i>Chrysolina americana</i>	2012	2008	2008	2011	2012	2
<i>Chrysolina brunsvicensis</i>	2012	1964	2012	1946	1988	4
<i>Chrysolina fastuosa</i>	2008	1835	2008	1921	2001	4
<i>Chrysolina graminis</i>	1835	1835	1835			0
<i>Chrysolina hyperici</i>	2008	1901	2008	1905	1905	2
<i>Chrysolina marginata</i>	1966	1835	1960	1964	1966	0
<i>Chrysolina menthastri</i>	1987	1835	1987			1
<i>Chrysolina orichalcia</i>	1835	1835	1835			0
<i>Chrysolina polita</i>	2014	1897	2006	1905	2014	5

Species	Cumbria latest year	VC 70 Cumberland		VC 69 Westmorland		Frequency
		first year	last year	first year	last year	
Chrysolina staphylaea	2013	1897	2012	1905	2013	4
Chrysolina varians	2012	1901	2012	1905	2009	3
Gastrophysa polygoni	2004	1897	2004	1905	1992	2
Gastrophysa viridula	2014	1901	2014	1905	2014	7
Phaedon armoraciae	2014	1901	2014	1905	2013	4
Phaedon cochleariae	2013	1901	2013	1905	2004	5
Phaedon concinnus	2013	1901	1999	1960	2013	3
Phaedon tumidulus	2014	1897	2014	1905	2014	6
Hydrothassa glabra	2014	1897	2014	1865	1960	5
Hydrothassa hannoveriana	1960	1900	1960			0
Hydrothassa marginella	2014	1897	2014	1905	2014	6
Prasocuris junci	2004	1898	2004	1905	1960	2
Prasocuris phellandrii	2014	1897	2014	1905	1996	4
Chrysomela aenea	2015	1897	2015	1991	2014	5
Chrysomela populi	2012	1835	2012			2
Phytodecta decemnotata	1835	1835	1835			0
Gonioctena olivacea	2008	1897	2008			2
Gonioctena pallida	2007	1894	1998	1905	2007	2
Phyllodecta laticollis	2008	1990	2008	1960	2008	3
Phratora vitellinae	2014	1897	2013	1905	2014	4
Phratora vulgatissima	2013	1897	2011	1905	2013	5
Galerucella californiensis	2014	1899	2014	1991	2007	5
Galerucella lineola	2011	1897	2011	1905	2006	5
<i>Galerucella nymphaeae</i>	2001	1901	1901	2001	2001	1
Galerucella pusilla	1900+	1900+	1900+			0
Galerucella sagittariae	2014	1901	2014	1905	2007	4
Galerucella tenella	2014	1898	2014	1905	2013	5
Pyrrhalta viburni	2009	1908	1996	1981	2009	2
Galeruca tanacetii	2008	1901	2008	1913	1960	2
Lochmaea caprea	2014	1899	2014	1971	2014	4
Lochmaea crataegi	2013	1902	2012	1971	2013	4
Lochmaea suturalis	2012	1897	2012	1905	2007	5
Phyllobrotica quadrimaculata	2008	1963	2008	1920	2002	4
Luperus flavipes	2013	1894	2004	1905	2013	2
Luperus longicornis	2014	1894	2014	1913	2013	5
Sermylassa halensis	2010	1898	2006	1905	2010	3
Phyllotreta exclamationis	2006	1901	2006			2
Phyllotreta flexuosa	2014	1902	2014	1971	2009	3
Phyllotreta nemorum	2007	1897	2007	1905	1905	1
Phyllotreta tetrastigma	2014	1905	2014	1993	1993	4
Phyllotreta undulata	2007	1897	2004	1905	2007	4
Phyllotreta striolata	1912	1911	1912	1913	1934	0
Phyllotreta vittula	1978	1914	1978			0
Aphthona atrocaerulea	1995	1995	1995			1
Aphthona euphorbiae	2008	1994	2008	2001	2001	2
Aphthona herbigrada	2011			1971	2011	2
Aphthona melancholica	2007	1990	1992	2007	2007	2
Aphthona pallida	2014	1925	2014			1
Aphthona nonstriata	2014	1901	2014	1905	2013	5
Longitarsus anchusae	1920	1903	1920			0
Longitarsus atricillus	2007	1899	2007	1905	1907	2
Longitarsus brunneus	1910	1910	1910			0
Longitarsus exoletus	1971	1908	1908	1971	1971	0
Longitarsus ganglbaueri	1905	1905	1990?			1
Longitarsus gracilis	2011	1901	2004	1905	2011	3
Longitarsus holsaticus	1914	1905	1914			0

Species	Cumbria latest year	VC 70 Cumberland		VC 69 Westmorland		Frequency
		first year	last year	first year	last year	
Longitarsus jacobaeae	2012	1898	2012	1905	2010	3
Longitarsus kutscherae	2012			1979	2012	1
Longitarsus luridus	2014	1897	2014	1905	2014	6
Longitarsus melanocephalus	2013	1901	2011	1905	2013	4
Longitarsus membranaceus	2014	1981	2008	2001	2014	3
Longitarsus nigrofasciatus	1960	1908	1960			0
Longitarsus ochroleucus	1989	1901	1989	1880?	1880?	1
Longitarsus parvulus	2001	1845	1845	2001	2001	1
Longitarsus plantagomaritimus	2011	1979	1987	1980	2011	2
Longitarsus pratensis	2011	1901	2010	1905	2011	4
Longitarsus reichei	2005	1905	2005	1989	1989	2
Longitarsus rubiginosus	2013	1981	2013	1986	1986	3
Longitarsus succineus	2011	1901	2008	1993	2011	3
Longitarsus suturellus	2014	1901	2013	1905	2014	4
Altica longicollis	2007	1901	2007	1971	2007	3
Altica lythri	2014	2000	2014	2004	2010	3
Altica oleracea	2015	1898	2015	1913	2012	4
Altica palustris	2014	1987	2014	1993	2014	3
Altica pusilla	2014			1905	2014	3
Hermaeophaga mercurialis	1990			1990	1990	1
Batophila rubi	2010	1910	2012	1913	2010	2
Ochrosis ventralis	1835	1835	1835			0
Crepidodera ferruginea	2014	1897	2008	1913	2014	5
Crepidodera impressa	2011			1993	2011	2
Crepidodera transversa	2013	1898	2013	1905	2013	5
Derocrepis rufipes	2014	1899	2014	1905	2008	3
Hippuriphila modeeri	2013	1910	2004	1905	2013	3
Chalcoides aurata	2014	1897	2014	1905	1905	2
Chalcoides aurea	1986	1835	1835	1986	1986	1
Chalcoides fulvicornis	2014	1901	2014	1905	2014	6
Epitrix pubescens	2007			2007	2007	1
Podagrica fuscicornis	1835	1835	1835			0
Mantura obtusata	2005	1897	2005	1905	2001	3
Mantura rustica	2005	1898	2005	1905	1905	1
Chaetocnema concinna	2007	1897	2007	1905	2004	4
Chaetocnema confusa	1991	1925?	1991			1
Chaetocnema hortensis	2004	1910	2004	1993	1993	3
Chaetocnema sahlbergi	1994	1910	1994	1987	1993	2
Sphaeroderma rubidum	2011	1901	2011	1905	2011	4
Sphaeroderma testaceum	2013	1897	2013	1905	2011	4
Apteropeda globosa	1995	1903	1995	1905	1993	2
Apteropeda orbiculata	2008	1898	2008	1905	1991	3
Mniophila muscorum	1917	1905	1917	1905	1907	0
Psylliodes affinis	2014	1901	2004	1905	2014	3
Psylliodes chrysocephala	2007	1897	2005	1974	2007	3
Psylliodes cuprea	2010	1901	1996	1905	2010	2
Psylliodes marcida	2014	1899	2014	1988	1988	4
Psylliodes napi	2014	1898	2014	1905	2012	5
Psylliodes picina	2005	1907	2005	1971	1971	4
Psylliodes laticollis	2000	1987	2000			3
Cassida flaveola	2013	1901	2013	1998	2001	4
Cassida hemisphaerica	1919	1899	1919			0
Cassida nobilis	2010	1997	2010	2004	2004	2
Cassida prasina	2004	1906	2004	1905	1977	4
Cassida rubiginosa	2014	1897	2013	1955	2014	6
Cassida vibex	1980+	1980+	1980+			1

Species	Cumbria latest year	VC 70 Cumberland		VC 69 Westmorland		Frequency
		first year	last year	first year	last year	
Cassida viridis	2013	1835	2004	1905	2013	4
Cassida vittata	1995	1995	1995	1983	1983	1
NEMONYCHIDAE						
Cimberis attelaboides	1987	1898	1987	1971	1971	1
ANTHRIBIDAE						
Anthribus nebulosus	1991	1898	1991	1905	1973	1
Plastystomos albinus	2009			1997	2009	2
Choragus sheppardi	2000	2000	2000			1
Araecerus fasciculatus	1908	1908	1908			0
ATTELABIDAE						
Attelabus nitens	1991	1898	1991			1
Apoderus coryli	2014	1835	1835	1946	2014	2
Rhynchites cupreus	2005	1900	1994	1948	2005	3
Rhynchites aeneovirens	1998	1897	1998	1960	1971	2
Rhynchites aequatus	2002	1997	2002			2
Rhynchites germanicus	2000	1899	2000	1905	1913	3
Rhynchites pauxillus	2008	1978	2008			1
Rhynchites longiceps	1989	1897	1989	1971	1971	2
Rhynchites nanus	2013	1901	1989	1971	2013	2
Rhynchites tomentosus	1941	1941	1941			0
Byctiscus betulae	1971	1835	1835	1905	1971	0
Deporaus betulae	2010	1897	2010	1905	2005	4
Deporaus mannerheimi	2005	1897	2005	1905	2005	3
APIONIDAE						
Omphalapion hookerorum	1998	1996	1998			2
Ceratapion onopordi	2010	1901	2010	1864	2009	3
Ceratapion gibbirostre	2013	1899	2013	1905	2012	5
Diplapion stolidum	1897	1897	1897			0
Diplapion confluens	2008	1905	2008	1986	1986	4
Aspidapion radiolus	1999	1901	1999			1
Aspidapion aeneum	1835	1835	1835			0
Kalcapion pallipes	2012	1901	1998	1905	2012	2
Pseudapion rufirostre	1960			1960	1960	0
Exapion genistae	1924	1914	1924			0
Exapion ulicis	2014	1897	2014	1905	2013	5
Protapion apricans	2014	1897	2014	1905	2012	5
Protapion assimile	2008	1899	2008	1905	1907	4
Protapion fulvipes	2014	1897	2014	1905	2013	6
Protapion nigritarse	2003	1897	2003	1905	1960	3
Protapion ononicola	2011	1998	2006	2011	2011	2
Protapion trifolii	2008	1909	2008			2
Perapion curtirostre	2014	1898	2014	1905	2014	7
Perapion marchicum	2014	1901	2014	1904	1913	3
Perapion affine	2005	1897	2005			3
Perapion hydrolapathi	2010	1905	2009	1960	2010	3
Perapion violaceum	2014	1897	2014	1905	2012	5
Apion cruentatum	2010	1930	2010	1998	1998	3
Apion miniatum (= frumentarium)	2006	1901	2006			2
Apion haematodes	2013	1897	2013	1904	2012	4
Apion rubens	2010	1983	2010			2
Apion rubiginosum (sanguineum)	pre1970			pre 1970	pre 1970	0
Catapion pubescens	2012	2012	2012	1983	1983	1
Catapion seniculus	2009	1897	2009	1905	2009	4
Trichapion simile	2007	1889	2007	2007?	2007?	3
Stenopterapion tenue	2005	1901	2005	1905	1913	2
Stenopterapion scutellare	2005	1901	2005			2

Species	Cumbria latest year	VC 70 Cumberland		VC 69 Westmorland		Frequency
		first year	last year	first year	last year	
Ischnopterapion loti	2014	1897	2013	1905	2014	4
Ischnopterapion modestum	2014	1989	2010	2014	2014	3
Ischnopterapion virens	2012	1898	2012	1905	1913	4
Protopirapion atratum	2006	1897	2006	1905	1905	4
Synapion ebeninum	2005	1899	2005			2
Holotrichapion ononis	2012	1898	2005	2000	2012	3
Holotrichapion pisi	1991	1901	1991	1905	1907	2
Holotrichapion aethiops	1995	1899	1995	1905	1905	2
Pirapion immune	2004	1901	2004			2
Cyanapion spencii	2001	1906	2001			2
Cyanapion afer	2000	1901	2000	1905	1905	1
Cyanapion gyllenhali	2000	1898	2000			2
Oxystoma cerdo	2008	1845	2010	2006?	2006?	2
Oxystoma craccae	2013	1979	2013	2010	2011	3
Oxystoma subulatum	2014	1901	2014	2012	2012	3
Eutrichapion ervi	2014	1898	2014	1905	2013	5
Eutrichapion viciae	2012	1899	2012	1905	2011	5
Eutrichapion punctigerum	2010	1899	2010	1905	1960	4
Nanophyes marmoratus	2014	1911	2005	1971	2014	2
CURCULIONIDAE						
Otiorhynchus arcticus	1991	1991	1991			1
Otiorhynchus atroapterus	2014	1898	2014	1960	1992	3
Otiorhynchus desertus	2005	1901	2005	1905	1979	2
Otiorhynchus ligneus	2011	1898	2005	1905	2011	3
Otiorhynchus nodosus	2013	1900	1992	1899	2013	3
Otiorhynchus ovatus	2007	1899	2007	1905	2007	5
Otiorhynchus porcatus	2011	1969	2005	1974	2011	3
Otiorhynchus rugifrons	2007	1901	2006	1905	2007	3
Otiorhynchus rugosostriatus	1998	1835	1998	1996	1996	2
Otiorhynchus singularis	2014	1898	2014	1905	2014	7
Otiorhynchus sulcatus	2012	1898	2008	1905	2012	4
Caenopsis fissirostris	2007	1974	1994	1971	2007	2
Caenopsis waltoni	2005	1876	2005			3
Trachyphloeus angustisetulus	1998	1909	1998	?1979	?1979	2
Trachyphloeus aristatus	1993	1907	1982	1979	1993	1
Trachyphloeus rectus	1982	1978	1982	1979	1979	0
Omiamima mollina	1994	1903	1994			1
Phyllobius argentatus	2014	1897	2014	1905	2014	6
Phyllobius calcaratus	2014	1897	2014	1905	2014	5
Phyllobius maculicornis	2014	1897	2014	1905	2013	3
Phyllobius oblongus	2013	1897	2005	1905	2013	3
Phyllobius pomaceus	2014	1898	2014	1905	2014	5
Phyllobius pyri	2014	1897	2014	1905	2014	7
Phyllobius roboretanus	2014	1899	2014	1905	2012	5
Phyllobius vespertinus	1944	1944	1944			0
Phyllobius viridiaeris	2007	1901	2005	1905	2007	4
Phyllobius viridicollis	2012	1899	2011	1905	2012	4
Polydrusus cervinus	2008	1897	2008	1905	2002	4
Polydrusus pulchellus	2013	1900	1999	1913	2013	3
Polydrusus flavipes	1980	1919	1980			0
Polydrusus mollis	2013	1902	1981	1904	2013	2
Polydrusus pilosus	2007	1965	2002	1999	2007	4
Polydrusus pterygomalis	2013	1897	2013	1905	2013	5
Polydrusus undatus	2014	1899	2008	1905	2014	4
Barypeithes araneiformis	2014	1898	2014	1905	2013	5
Barypeithes pellucidus	2014	1943	2014	1950	2012	4

Species	Cumbria latest year	VC 70 Cumberland		VC 69 Westmorland		Frequency
		first year	last year	first year	last year	
Barypeithes sulcifrons	2006	1978	1982	2006	2006	1
Sciaphilus asperatus	2014	1897	2010	1905	2014	4
Brachysomus echinatus	1999	1899	1999	1905	1979	2
Strophosoma capitatum	2007	1898	1998	1905	2007	3
Strophosoma faber	1905	1901	1901	1905	1905	0
Strophosoma melanogrammum	2014	1897	2014	1905	2012	6
Strophosoma nebulosum	2012	1901	2007	1905	2012	2
Strophosoma sus	2007	1897	2007	1905	1905	3
Cneorhinus plumbeus	2014	1897	2005	1960	2014	3
Philopeton plagiatu	2012	1897	2012	1975	1992	5
Liophloeus tessulatus	2008	1898	1994	2000	2008	2
Barynotus moerens	2012	1897	2008	1905	2012	3
Barynotus obscurus	2010	1897	2010	1905	2002	4
Barynotus squamosus	2006	1897	2006	1905	1907	3
Tropiphorus obtusus	2000	1903	1994	1905	2000	2
Tropiphorus terricola	1999	1897	1999	1905	1907	2
Tanymecus palliatus	2003	1899	1993	1993	2003	2
Sitona ambiguus	2011	1977	2011	1979	1979	3
Sitona cambricus	2011	1899	2011			3
Sitona griseus	2014	1901	2014	1963	1992	2
Sitona hispidulus	1999	1898	1999	1905	1960	4
Sitona humeralis	1998	1901	1998	1905	1905	2
Sitona lepidus	2014	1897	2014	1905	2012	6
Sitona lineatus	2014	1897	2014	1963	2012	4
Sitona lineellus	2006	1905	2006	1979	1981	3
Sitona macularius	1998	1988	1998			2
Sitona ononidis	1998	1901	1998			2
Sitona puncticollis	2014	1899	2013	2010	2014	3
Sitona regensteiniensis	2013	1897	2012	1905	2013	5
Sitona striatellus	2013	1897	2013	1979	2007	4
Sitona sulcifrons	2013	1897	2011	1905	2013	4
Sitona suturalis	2014	1898	2014	1905	2011	6
Cleonus piger	2005	1898	2005	1976	1985	3
Hypera arator	2003	1897	2003	1905	1960	2
Hypera dauci	1996	1909	1996			1
Hypera nigrirostris	2014	1897	2014	1905	1960	3
<i>Hypera ononidis</i>	2012	1909	1909	1960	2012	1
Hypera plantaginis	2011	1897	2010	1905	2011	3
Hypera pollux	1994	1994	1994			1
Hypera postica	2006	1905	2006	1905	1960	2
Hypera punctata	2010	1897	2010	1905	1905	2
Hypera rumicis	2015	1898	2015	1905	2007	3
Hypera suspiciosa	1997	1899	1997	1905	1905	2
Hypera venusta	2003	1899	2003	1905	1905	2
Limobius borealis	1998	1994	1998	1958	1958	2
Cionus scrophulariae	2014	1897	2014	1905	2014	5
Cleopus pulchellus	2005	1898	2005	1905	1995	3
Alophus triguttatus	2006	1897	2006	1905	1978	3
Hylobius abietis	2007	1897	2006	1905	2007	4
Leiosoma deflexum	2014	1898	2014	1905	2007	6
Leiosoma oblongulum	1993	1979	1979	1993	1993	1
Gronops lunatus	1997	1997	1997			1
Pissodes castaneus	2006	1915?	2006			2
Pissodes pini	2012	1900	2012	1995	1995	3
Magdalis armigera	1982	1902	1903	1982	1982	0
Magdalis carbonaria	2008	1915	1988	1947	2008	3

Species	Cumbria latest year	VC 70 Cumberland		VC 69 Westmorland		Frequency
		first year	last year	first year	last year	
Magdalis duplicata	1980	1980	1980			0
Magdalis phlegmatica	2005	1907	1978	2005	2005	1
Magdalis ruficornis	2010	1901	2010	1948	1948	2
Anoplus plantaris	2011	1897	2011	1905	2011	4
Anoplus roboris	1991	1908	1991			1
Euophryum confine	2014	1972	2014	2007	2011	3
Pentarthrum huttoni	1901	1901	1901			0
Mesites tardii	2014	1979	2014	1865	2014	3
Phloeophagus lignarius	1988			1988	1988	1
Sitophilus granarius	1960	1905	1910	1960	1960	0
Sitophilus oryzae	1910	1903	1910	1905	1905	0
Trachodes hispidus	2003	1835	1998	1971	2003	2
Cryptorhynchus lapathi	1987	1899	1987	1905	1905	1
Acalles misellus	1994	1977	1994			2
Acalles ptinoides	2013	1901	2005	1971	2013	3
Acalles roboris	1994	1994	1994	1972	1993	2
Stenopelmus rufinasus	1998	1998	1998			1
Bagous collignensis	1925	1906	1925			0
Bagous limosus	1917	1909	1917			0
Bagous tempestivus	1984	1984	1984			0
Bagous glabrirostris	2007	1835?	2007			1
Bagous lutulentus	1925	1906	1925			0
Hydromus alismatis	1984	1908	1984			0
Dorytomus dejeani	2008	1930	1996	1971	2008	2
Dorytomus filirostris	2008	2008	2008			1
Dorytomus longimanus	1919	1897	1919	1905	1905	0
Dorytomus majalis	1960	1835	1960			0
Dorytomus melanophthalmus	1996	1901	1996	1905	1981	3
Dorytomus rufatus	2013	1899	2000	1905	2013	3
Dorytomus salicinus	1998	1978	1998			1
Dorytomus taeniatus	2014	1897	2014	1905	2010	4
Dorytomus tortrix	1971	1835	1930	1971	1971	0
Dorytomus tremulae	1905	1835	1835	1905	1905	0
Procas granulicollis	1998	1848	1992	1998	1998	2
Notaris acridulus	2014	1897	2013	1905	2014	5
Notaris aethiops	1993	1907	1993			1
Notaris bimaculatus	2014	1898	2014	1905	1981	2
Notaris scirpi	2011	1979	1982	2011	2011	1
Grypus equiseti	2005	1901	2005	1913	2005	3
Orthochaetes insignis	2001	1993	2001			2
Orthochaetes setiger	2013	1907	2012	1905	2013	2
Coeliodes dryados	2007	1897	2005	1905	2007	4
Coeliodes erythroleucos	1975	1975	1975			0
Coeliodes nigratarsis	1991	1986?	1991			2
Coeliodes ruber	1998	1901	1998	1905	1960	2
Coeliodes rubicundus	2010	1899	2010	1904	2007	4
Zacladus geranii	2014	1901	2006	1905	2014	3
Stenocarus umbrinus	1924	1905	1924			0
Micrelus ericae	2009	1897	2009	1905	1997	5
Cidnorhinus quadrimaculatus	2014	1897	2014	1905	2014	6
Trichosirocalus dawsoni	2006	1978	2006	1979	1979	3
Trichosirocalus thalhammeri	2013	1982	1999	1979	2013	2
Trichosirocalus troglodytes	2013	1898	2011	1905	2013	4
Ceutorhynchus alliariae	2013	1905	2013			2
Ceutorhynchus assimilis	2011	1899	2011	1905	2010	4
Ceutorhynchus chalybaeus	2011	1905	1907	1905	1905	0

Species	Cumbria latest year	VC 70 Cumberland		VC 69 Westmorland		Frequency
		first year	last year	first year	last year	
Ceutorhynchus atomus	2011	1907	2011			2
Ceutorhynchus cochleariae	2004	1907	2004			2
Ceutorhynchus constrictus	1992	1992	1992			1
Ceutorhynchus contractus	2003	1897	2003	1905	2000	3
Ceutorhynchus depressicollis	1907	1904	1907			0
Ceutorhynchus erysimi	2013	1898	2005	1905	2013	3
Ceutorhynchus euphorbiae	1973	1899	1972	1973	1973	0
Ceutorhynchus floralis	2010	1901	2002	1905	2010	4
Ceutorhynchus hirtulus	1987	1979	1987			1
Ceutorhynchus litura	2010	1898	2010	1979	2006	4
Ceutorhynchus marginatus	1909	1835	1909			0
Ceutorhynchus melanostigma	1999	1928	1999			3
Ceutorhynchus mixtus	2008	1984	2008			2
Ceutorhynchus pectoralis	1931	1922	2013			1
Ceutorhynchus pleurostigma	1987	1901	1987	1905	1905	1
Ceutorhynchus pollinarius	2010	1897	2013	1905	2014	4
Ceutorhynchus pumilio	1995	1907	1995			1
Ceutorhynchus punctiger	2005	1901	2005	1975	1992	3
Ceutorhynchus pyrrhorhynchus	1999	1904	1999	1905	1905	2
Ceutorhynchus quadridens	2011	1899	2011	1905	2007	4
Ceutorhynchus quercicola	1978	1901	1978			0
Ceutorhynchus rapae	1979	1979	1979			0
Ceutorhynchus sulcicollis	1901	1901	1901			0
Ceutorhynchus triangulum	2006	1920	2006			3
Ceutorhynchus viduatus	2013	1911	2013			4
Amalus scortillum	2011			2011	2011	1
Eubrychius velutus	1960	1906	1960			0
Litodactylus leucogaster	1983	1906	1983			0
Rhinoncus bruchoides	2013	1977	1997	1979	2013	2
Rhinoncus castor	2009	1901	2009	1905	1998	3
Rhinoncus inconspicuous	1909	1907	1909			0
Rhinoncus pericarpus	2014	1899	2014	1905	2012	5
Rhinoncus perpendicularis	2007	1907	2007	2004	2004	2
Phytobius canaliculatus	1993	1906	1993	1991	1991	2
Phytobius comari	2015	1904	2015	1905	2001	4
Phytobius muricatus	1907	1904	1907			0
Phytobius quadrituberculatus	2008	1900	2008	1905	2004	3
Phytobius zumpti	2009	1987	1999	1990	2009	3
Phytobius waltoni	1977	1977	1977			0
Amalorrhynchus melanarius	2000	1991	2000	1971	1971	2
Drupenatus nasturtii	1994	1900	1994			1
Poophagus sisymbrii	2003	1900	2003	1905	2003	3
Orobitis cyaneus	2012	1907	2012	1905	1979	3
Limnobaris pilistriata	2014	1899	2014	1905	2014	5
Limnobaris t-album	2012	1910	2012	1913	2010	3
Anthonomus bituberculatus	2005	1960	2005	1979	1981	3
Anthonomus brunnipennis	2014	1901	2014	1905	2002	4
Anthonomus conspersus	2010	2010	2010			1
Anthonomus pedicularius	2014	1897	2014	1905	2014	5
Anthonomus pomorum	2010	1901	2010			2
Anthonomus rubi	2013	1898	2013	1960	2013	4
Anthonomus rufus	1964			1964	1989	1
Anthonomus ulmi	1978	1905	1978	1905	1905	0
Furcipes rectirostris	2010	1979	2010			2
Curculio nucum	1993	1835	1993	1971	1990	2
Curculio pyrrhoceras	2014	1904	2014	1905	2006	4

Species	Cumbria latest year	VC 70 Cumberland		VC 69 Westmorland		Frequency
		first year	last year	first year	last year	
Curculio salicivorus	2014	1897	2014	1905	2012	4
Curculio villosus	1988	1904	1988	1971	1971	1
Tychius squamulatus	2012	1974	1997	2012	2012	2
Tychius picirostris	2011	1901	2011			3
Sibinia primitus	1998	1998	1998			1
Ellescus bipunctatus	2010	1897	1995	1905	2010	3
Mecinus collaris	2012	1976	2012	1979	1979	2
Mecinus pyraeter	2010	1897	2008	1905	2010	4
Gymnetron antirrhini	2004	1976	2004			2
Gymnetron beccabungae	2010	1995	1995	2010	2010	2
Gymnetron labile	2013	1898	2011	1905	2013	3
Gymnetron pascuorum	2012	2010	2012	2007	2012	2
Gymnetron veronicae	2014	1901	1914	1905	1905	0
Orchestes avellanae	1993	1903	1986	1993	1993	2
Orchestes fagi	2012	1897	2012	1905	2012	6
Orchestes pilosus	1980	1905	1980	1905	1905	0
Orchestes quercus	1998	1898	1998	1905	1998	2
Orchestes rusci	2010	1898	2010	1905	2010	4
Tachyerges pseudostigma	1916	1901	1916			0
Tachyerges salicis	2013	1898	2013	1905	2006	3
Tachyerges stigma	2010	1897	2010	1913	2007	3
Isochnus foliorum	1980	1897	1980	1905	1960	0
Rhamphus oxyacanthae	2016	1901	2016	1993	1993	4
Rhamphus pulicarius	2011	1901	2011	1905	2001	4
SCOLYTIDAE						
Scolytus intricatus	2012	1942	2009	1971	2012	3
Scolytus mali	2005	2005	2005			1
Scolytus ratzeburgi	2006	1993	2003	1997	2006	3
Scolytus scolytus	2011	1899	2011	1905	1905	2
Hylesinus crenatus	2011	1900	2000	1905	2011	2
Leperisinus varius	2013	1901	2010	1905	2013	3
Acrantus vittatus	1900	1900	1900			0
Hylastinus obscurus	2006	1903	2006			1
Phloeophthorus rhododactylus	2007	1903	2007	1905	1905	2
Hylurgops palliatus	2012	1901	2014	1905	2007	3
(Hylastes ater ?)	1988	1899	1988	1988	1988	2
Hylastes brunneus	1996	1899	1996	1905	1996	1
Hylastes cunicularius	1992	1992	1992			1
Hylastes opacus	1942	1942	1942			0
Tomicus piniperda	2012	1898	2010	1905	2012	3
Dryocoetes alni	1924	1924	1924			0
Dryocoetes villosus	2006	1916	1991	1989	2006	3
Dryocoetes autographus	2010	1921	2010	2008	2008	3
Xyleborus saxesenii	2013			2013	2013	1
Trypodendron domesticum	2013	1898	2013	1963	2012	3
Trypodendron lineatum	2003	1902	2003			2
Trypodendron signatum	2008	1985	2008	1964	2006	2
Pityogenes bidentatus	1993	1900	1943	1905	1993	1
Pityogenes chalcographus	1921	1921	1921			0
Ips acuminatus	2009	1910	2009			1
Ips typographus (imported?)	1921	1921	1921			0
PLATYPODIDAE						
Platypus cylindricus	2007			2007	2007	1

