



1998



2000



2012

The **Catalina Island Fox** is the largest endemic mammal on the island and can only be found in Catalina Island. In 2000 the population of Catalina Island Foxes plummeted from 1,342 to less than 100 due to an outbreak of canine distemper virus. The species has recovered but is still considered endangered with about 1008 left in the wild.



The **Catalina Mahogany** is thought to be one of the rarest shrubs in the continental United States. It is currently listed on the federal and state endangered rare plants list and can only be found in Catalina Island. There are only 6 pure Catalina Mahogany (*Cercocarpus traskiae*) left on the island.





Source: catalinavacations.com

Catalina California ground squirrel



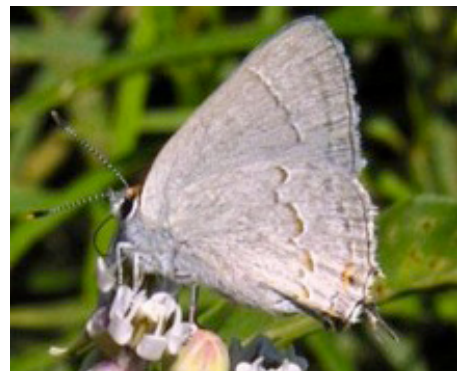
Source: catalinavacations.com

Catalina California quail



Source: catalinaconservancy.org

Catalina Manzanita



Source: catalinaconservancy.org

Avalon hairstreak butterfly

**MAMMALS**

- Catalina California ground squirrel (*Otospermophilus beecheyi nesioticus*)
- \*Santa Catalina Island fox (*Urocyon littoralis catalinae*)
- Santa Catalina Island deer mouse (*Peromyscus maniculatus catalinae*)
- Santa Catalina Island harvest mouse (*Reithrodontomys megalotis catalinae*)
- Santa Catalina Island shrew (*Sorex ornatus willetti*)

**BIRDS**

- Bewick's wren (*Thryomanes bewickii catalinae*)
- Catalina California quail (*Callipepla californica catalinensis*)
- Catalina Hutton's vireo (*Vireo huttoni unitti*)

**FLORA**

- Catalina manzanita (*Arctostaphylos catalinae*)
- \*Catalina mountain mahogany (*Cercocarpus traskiae*)
- Catalina liveforever (*Dudleya virens* subsp. *hassei*)
- St. Catherine's lace (*Eriogonum giganteum* var. *giganteum*)
- Santa Catalina bedstraw (*Galium catalinense catalinense*)
- Santa Catalina ironwood (*Lyonothamnus floribundus floribundus*)
- Santa Catalina Island bush-mallow (*Malacothamnus fasciculatus* var. *catalinensis*)
- Trask's yerba santa (*Eriodictyon traskiae* var. *traskiae*)

**INVERTEBRATES**

- Avalon hairstreak butterfly (*Strymon avalona*)
- Scarab beetle (*Coenonycha clypeata*)
- Scarab beetle (*Coenonycha fulva*)
- Scarab beetle (*Phobetus ciliatus*)
- Scarab beetle (*Serica catalina*)
- Catalina Walkingstick (*Pseudosermyle catalina*)
- Catalina shield-back cricket (*Neduba propsti*)
- Catalina orangetip butterfly (*Anthocharis cethura catalina*)
- Dasytastes insularis*
- Dasytastes catalinae*
- Jerusalem cricket (*Stenopelmatus* n. spp.)
- Horsehair worm
- Solenopsis texana catalinae*
- Silk-spinning cricket (*Cnemetotix miniatus*)
- Catalina cicada (*Okanagana hirsuta*)
- Strigota seclusa*
- Darkling beetle (*Metoponium insulare*)
- Darkling beetle (*Eleodes omissa catalinae*)
- Oligomerodes catalinae*
- Fuzzy weevil (*Trigonoscuta catalina*)
- Euvrietta catalinae*
- Soldier beetle (*Cantharis hatchi dorothyae*)
- Painted tiger moth (*Arachnis picta meadowsi*)



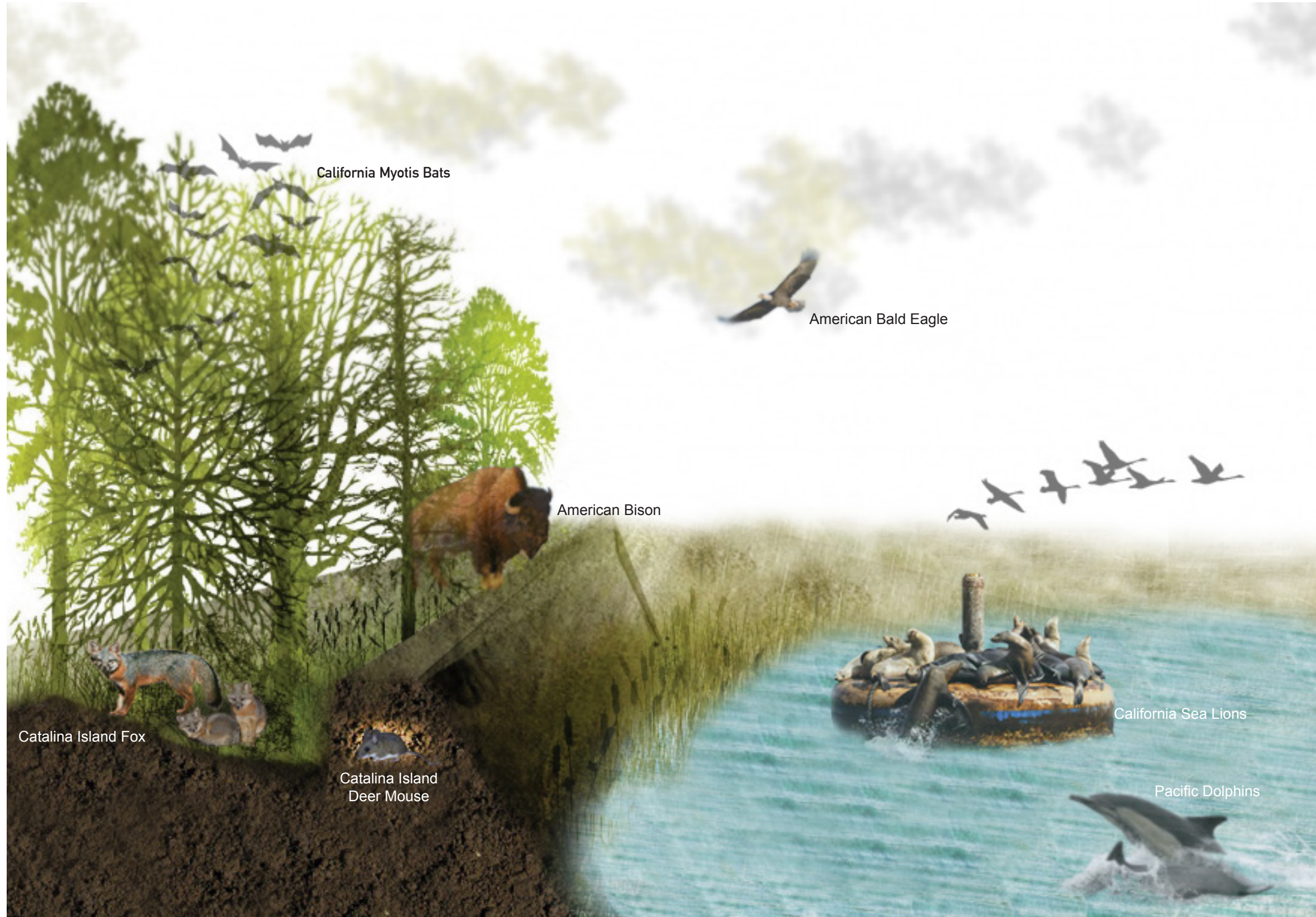
CATALINA ISLAND CONSERVANCY

Conservation. Education. Recreation.

**INVERTEBRATES CONT.**

- Scavenger moth (*Holocera phenacocci*)
- Tortricid moth (*Eucosma avalona*)
- Cambrid snout moth (*Evergestis angustalis catalinae*)
- Blotched leaf miner (*Amauromyza insularis*)
- Evylaeus avalonensis*
- Anthophora urbana catalinae*
- Cuckoo bee (*Nomada avalonica*)
- Catalina long-horned bee (*Exomalopsis cockerelli*)
- Catalina long-horned bee (*Melissodes scottii*)
- Monkey grasshopper (*Morsea californica catalinae*)
- Snout beetle (*Stenoptochus inconstans*)
- Catalina crab spider (*Misumenops importunes belkini*)
- Catalina millipede (*Bollmaniulus catalinae*)
- Small millipede
- Catalina centipede (*Pectiniunguis catalinensis*)
- Catalina centipede (*Pectiniunguis heathi catalinae*)
- Catalina mountain snail (*Radiocentrun avalonense*)
- Avalon land snail (*Micrarionta beatula*)
- Catalina Island snail (*Micrarionta rufocincta*)
- Catalina snail (*Micrarionta catalinae*)
- Catalina cactus snail (*Xerarionta kellettii*)
- Catalina lancetooth snail (*Haplotrema catalinense*)





California Myotis Bats

American Bald Eagle

American Bison

Catalina Island Fox

Catalina Island Deer Mouse

California Sea Lions

Pacific Dolphins



The **Sky** is ruled by several species of birds and bats that live in the ecosystem. One of the most notable birds is the North American Eagle. Their nest can be located in around the island but very limited numbers. Their nest are currently being monitored by researchers.



The **Land** consist of the Catalina Island Fox, Catalina Island Deer Mouse, North American Bison, and much more. The Catalina Island Fox makes its den in somewhat protective locations rather than burrow underground like mainland foxes.



The **Water** is inhabited by the California Sea Lions, Dolphins, and many oceanic wildlife. The California Sea Lions can be found on offshore rocks, sloping rock croppings, and sandy and cobblestone beaches. They have a very diverse diet and mostly eat anchovy, market squid, sardines, mackerel, and rockfish.