

The  State

BOOK

20  05

LISTS

A special edition of Columbia Business Journal

LARGEST AREA ARCHITECTURE FIRMS *Ranked by number of registered local architects*

Rank	Name Address Phone/Fax/Web site	Registered local architects	Total staff	Inhouse services of specialization	Notable S.C. projects	Top local official	Year founded
1	JHS Architecture: Integrated Design 1812 Lincoln St. Columbia, SC 29201 (803) 252-2400 / (803) 252-1630 www.jhs-architects.com	10	29	Architecture, interior design, mechanical engineering, electrical engineering and planning	Palmetto Baptist Hospital, The Colonial Center (associate architect), Spring Valley High School, Williams Brice Stadium additions, Palmetto Armory office building	W. Barry Jenkins	1986
1	Jumper Carter Sease 412 Meeting St. West Columbia, SC 29169 (803) 791-1020 / (803) 791-1022 www.jcsarchitects.com	10	21	Architecture, interiors and planning. Specializing in educational, religious, corporate, municipal and healthcare projects	West Columbia City Hall, Crayton Middle School, Busbee Middle School, St. Stephens Lutheran Church	Joel Carter and Todd Sease	1929
1	Stevens & Wilkinson 1501 Main St. Columbia, SC 29201 (803) 765-0320 / (803) 254-6209 www.sw-sc.com	10	46	Architecture, engineering and interior design	S.C. State House, Columbia Museum of Art, Richland County Public Library, Meridian High Rise, Columbia Metropolitan Convention Center	Robert T. Lyles	1919
4	CJMW (formerly Architects BC) 201 West Main St. Lexington, SC 29072 (803) 957-9373 / (803) 957-4748 www.cjmw.com	9	16	Architecture, engineering and interior design	Center of Excellence for Technology at Midlands Tech, Lexington Municipal Complex, Riverbanks Zoo (West Columbia entrance), Lexington Technology Center	Ben Compton	1976
5	GMK Associates 1201 Main St., Suite 2100 Columbia, SC 29201 (803) 256-0000 / (803) 256-9610 www.gmka.com	8	100	Healthcare planning, architecture, engineering, design-build, interior design and construction services	McLeod Health, Kershaw County Medical Center Cancer Care Institute of Carolina, Koger Center, South Trust Building, Palmetto Health Richland renovations, Providence Hospital renovations, Richland County Judicial Center	Bruce Barragan	1966
6	The Boudreaux Group 1200 Park St. Columbia, SC 29201 (803) 799-0247 / (803) 771-6844 www.boudreauxgroup.com	6	19	Architecture, interior and planning	The Strom Thurmond Fitness and Wellness Center, USC West Quad dormitory, Logan Elementary School renovations, S.C. Bank and Trust headquarters	John A. Boudreaux	1976
6	Watson Tate Savory Architects 701-A Lady St. Columbia, SC 29201 (803) 799-5181 / (803) 799-5757 www.watsonatesavory.com	6	15	Architecture, master planning, interior design, LEED design	USC-Beaufort New River Campus, Hollings National Advocacy Center, Vista Lofts, USC Blossom Street garage, USC South Campus housing, Dunbar Funeral Home, S.C. Budget and Control Board Data Center	Michael Watson, Sanders Tate, Tom Savory, Regina Ford	1989
8	CDA Architects 1136 Washington St., Suite 600 Columbia, SC 29201 (803) 799-6502 / (803) 799-2014 www.curtdavisinc.com	5	22	Architecture, interior design, sustainable/LEED design, construction management, historic renovation, master planning	USC Baseball Stadium, Wilbur Smith Associates interior renovation, Ft. Jackson Military Entrance Processing Station renovation, Village at Sandhill, Cox & Dinkins LEED Certified building	Curt Davis	1984
8	LTC Associates 912 Lady St., Suite 300 Columbia, SC 29201 (803) 254-9082 / (803) 252-7200 www.LTCarch.com	5	13	Architecture: commercial, medical, educational, religious, food service, industrial, retail, multi-family and residential	SC National Guard headquarters, Lexington Medical Center Business Services Building, Florence & Hutcheson offices, Mohawk Manufacturing facility, Camp Gravatt Conference Center and Chapel, Ogletree law firm	Jeff Lewis, J. Wes Taylor, John Taylor	1995
8	The LPA Group Inc. 700 Huger St. Columbia, SC 29201 (803) 254-2211 / (803) 779-8749 www.lpagroup.com	5	145	Planning, design, construction management, commercial industrial, transportation and interiors	Columbia Pendleton Street parking facility, Columbia Metropolitan Airport rental car facilities, Columbia Owens Downtown Airport, Myrtle Beach International Airport, LPA Group headquarters	R. Glen Lott Arthur E. Parrish	1981

SOURCES: Information was compiled from mailed questionnaires and interviews with agency representatives.

Compiled by Chaunte McClure



Foster Cook
Commercial Interiors

"making your office make sense"

- commercial interior design • space planning
- trendway furniture & system cubicles
- fine office furniture, Pauli, Dar•Ran & La-Z-Boy

Member IIDA • Member ASID

www.fostercook.com • 803.252.5616

73986-49

LARGEST AREA ASSISTED-LIVING FACILITIES *Ranked by number of units*

Rank	Name Address Phone/Fax/Web site	No. of units	Entry fees/ Monthly fees	Services available	Nursing available	Administrator	Owner
1	Lowman Home Residential Care 2101 Dutch Fork Road; White Rock, SC 29177 (803) 732-8800 / (803) 732-8707 www.lowmanhome.org	132	\$300/ varies	All levels of care, Alzheimer's unit, medical director, full-time chaplain, beauty salon, scheduled transportation, robust activities	Yes	David Lever	Lutheran Homes of S.C.
2	Agape Assisted Living 2705 Leaphart Road West Columbia, SC 29169 (803) 939-3000 / (803) 739-8762	115	\$2,000/ rates begin at \$2,200 per month	Studio, one and two bedroom apartments, assisted living, laundry and cleaning services, individualized care, three meals per day, nursing and medical team, on site activities program	No	Veronica McMahon	Scott Middleton
3	Oakleaf Village of Lexington 800 N. Lake Drive Lexington, SC 29072 (803) 808-3477 / (803) 808-3419 www.oakleafvillage.com	100	\$1,500/ \$1,990 to \$3,600	Assisted living and dementia care with medication administration, three additional service levels, dining, laundry, transportation, recreation, security, maintenance, housekeeping, emergency call system	Yes	Melanie W. Anderson	Royal Senior Care, LLC
4	Rapha Residential Care 3959 Fish Hatchery Road Gaston, SC 29053 (803) 755-6541 / (803) 955-0453	92	\$500/ varies	Daily meals, transportation, security, beauty salon, barber shop, recreation, religious services, medical consultant, and independent, assisted and secured units	Yes	Debbie Williams	Mastermind LLP
5	Lexington Gardens 190 McSwain Drive; West Columbia, SC 29169 (803) 936-0062 / (803) 936-0204	90	\$750/ \$1,895 to \$2,495	Daily meals, transportation, security, trash removal, call bell, religious services, medical consultant, medication management, recreation, housekeeping, laundry services	Yes	Everette L. Williams	Wellington Healthcare
6	Generations of Batesburg 111 Generations Blvd. Batesburg, SC 29006 (803) 532-8428 / (803) 532-9194	88	none/ \$1,000 to \$2,000	Daily meals, transportation, security, trash removal, call bell, recreation, religious services, medical consultant, medication management	No	Tianita Pickens	Louetta Slice
7	Agape at Kathwood 4520 Trenholm Road Columbia, SC 29206 (803) 787-1234 / (803) 787-1285 www.carvita.com	86	Varies/ varies	Apartment-style living, daily dining, transportation, life-enrichment program, security, medication administration	Yes	Betsy Flora	Scott Middleton
8	Still Hopes Episcopal Retirement Community 1 Still Hopes Drive West Columbia, SC 29169 (803) 796-6490 / (803) 796-6059	71	Varies/ varies	Dementia program, services, apartments, cottages, adult day care, respite care	Yes	Danny Sanford	S.C. Episcopal Home at Still Hopes
9	Eden Gardens 120 Fairforest Drive Columbia, SC 29212 (803) 781-2243 / (803) 781-8127 www.edencare.com	66	varies/ varies	Reminisce security suites, lake view suites, rehab, meals, transportation, individual service plans, call bell, recreation, religious services, security, medication management	Yes	Steve Smith	Sunrise Senior Living Services
10	McElveen Manor 2065 McCray's Mill Road Sumter, SC 29154-9645 (803) 778-9690 / (803) 773-1575 www.mcelveenmanor.com	64	\$300/ varies	Whirlpool bath, meals, transportation, security, trash removal, call bell, recreation, religious services, medical consultant and management	No	Michele McElveen	Gobe McElveen

SOURCES: S.C. Department of Health and Environmental Control's list of community residential care facilities; interviews with company representatives.

Compiled by Chaunte McClure



Home is still the *best* place to be.

Locally owned and operated since 1999.

Companionship is as important as health care when it enables seniors to remain independent and in their homes. Our CAREGiversSM provide help at home that includes:

**Companionship · Light Housekeeping · Errands
Meal Preparation · Medication Reminders · Shopping**

Call 736-4242 for a Free, No Obligation Appointment or visit www.homeinstead.com



74494-64

LARGEST AREA STOCK BROKERAGES *Ranked by number of local licensed brokers*

Rank	Name Address Telephone/Fax Web site	No. of local licensed brokers	No. of local support staff	No. of local offices	Local manager	Sources of revenue %		Year founded locally
						Brokerage	Investment banking	
1	Merrill Lynch 1224 Sumter St., Columbia, SC 29201 (803) 771-8720 / (803) 733-2174 www.ml.com	52	21	3	Jeff Adams	WND	WND	1928
2	American Express Financial Advisors 7300 Carmel Executive Park, Suite 300 Charlotte, NC 28226 (704) 916-6924 / (704) 543-9881	36	21	20	Uwe Schweikert	WND	WND	1917
3	Smith Barney 1441 Main St., Suite 1100, Columbia, SC 29201 (803) 343-8800 / (803) 438-5570 http://branches.smithbarney.com/	32	15	1	R. Mac Stidham III	WND	WND	1945
4	Edward Jones & Co. 4600 Trenholm Road, Columbia, SC 29206 (803) 787-9902 / (803) 787-9904 www.edwardjones.com	26	28	26	Steve Junis	100	0	1981
5	Wachovia Securities 1901 Main St., Columbia, SC 29201 (803) 929-1192 / (803) 929-0882 www.wachoviasec.com	25	12	1	Scott Spang	WND	WND	1995
6	Morgan Stanley 1501 Main St., Suite 715, Columbia, SC 29201 (803) 251-3300 / (803) 251-3242 www.morganstanley.com	22	11	2	Kevin Wyatt	100	0	1979
7	A.G. Edwards and Sons Inc. 1025 Calhoun St., Columbia, SC 29201 (803) 779-8855 / (803) 256-2931 www.agedwards.com	15	8	1	Jay Pulliam	100	0	1978
8	Legg Mason Wood Walker Inc. 1301 Gervais St., Suite 700 Columbia, SC 29201 (803) 252-4111 / (803) 252-4666 www.leggmason.com	12	6	1	Larry Orr	100	0	1998
8	UBS Paine Webber 1901 Main St., Suite 750, Columbia, SC 29201 (803) 933-0231 / (803) 933-0134 www.ubs.com	12	7	1	Scott McKenzie	100	0	1997
10	First Allied Securities Inc. 4580 Sunset Blvd., Lexington, SC 29072 (803) 748-7666 / (803) 748-8666 www.swampfoxfinancial.com	8	11	3	John Marshall	100	0	1995

SOURCE: Interviews with company officials.
NOTE: Only full-service brokerages are listed.

WND - would not disclose

Compiled by Chaunte McClure

SERVING INVESTORS IN OUR COMMUNITY

1901 Main St Suite 650 • Columbia SC 29201
Direct 803-929-1192 • Toll-free 800-332-6637



WACHOVIA SECURITIES

78205-68

Wachovia Securities, LLC, member NYSE/SIPC, is a registered broker-dealer and a separate non-bank affiliate of Wachovia Corporation. ©2005 Wachovia Securities, LLC 64398 7/05

LARGEST AREA FINANCIAL INSTITUTIONS *Ranked by local deposits*

Rank	Name Address Phone / Fax / Web site	Local deposits (in thousands)	Overall assets (in thousands)	Earnings (in thousands)	ROA/ ROE	Area branches	Year founded	Chief executive/ top local official
1	Wachovia 301 S. College St., Suite 4000 One Wachovia Center, Charlotte, NC 28288-0013 (800) 922-4684 www.wachovia.com	\$2,377,075	\$454,751,000	\$1,526,000	1.35/ 13.05	39	1879	G. Kennedy Thompson/ John S. Goettee
2	Bank of America 100 N. Tryon St. Charlotte, NC 28255 (800)299-2265 / (704) 386-6699 www.bankofamerica.com	\$2,159,215	\$838,258,244	\$3,429,738	1.70/ 24.71	35	1998	Kenneth Lewis/ Kim Wilkerson
3	BB&T 200 W. Second St. Winston-Salem, NC 27150 (336) 733-2000 / (336) 733-3265 www.bbandt.com	\$1,269,876	\$6,242,119	\$23,385	1.50/ 16.44	24	1872	John Allison IV/ Michael R. Brennan
4	National Bank of S.C. 1241 Main St. Columbia, SC 29201 (803) 929-2145 / (803) 929-2167 www.nationalbanksc.com	\$1,259,444	\$3,388,647	\$15,438	1.84/ 21.82	15	1905	Fred Green/ Charles Garnett
5	First Citizens Bank & Trust 1230 Main St. Columbia, SC 29201 (803) 771-8700 / (803) 733-2031 www.firstcitizenonline.com	\$1,058,975	\$4,600,833	\$10,334	0.92/ 10.92	39	1964	Jim Apple
6	Carolina First Bank 102 Main St. Greenville, SC 29601 (864) 255-7900 / (864) 239-6423 www.carolinafirst.com	\$832,429	\$9,701,858	\$22,397	0.95/ 11.79	18	1986	Mack O. Whittle
7	Security Federal Bank 1705 Whisky Road Aiken, SC 29803 (803) 641-3000 www.securityfederalbank.com	\$403,623	\$585,851	\$995	0.69/ 11.52	11	1922	Timothy W. Simmons
8	S.C. Bank & Trust 520 Gervais St. Columbia, SC 29202 (803) 771-2265 / (803) 765-4627 www.scbandt.com	\$375,267	\$1,333,107	\$3,596	1.11/ 13.84	10	1934	Robert Hill Jr./ David J. Charpia
9	First Palmetto Savings Bank 407 DeKalb St. Camden, SC 29020 (803) 432-2265 / (803) 432-0193 www.firstpalmetto.com	\$346,194	\$768,342	\$2,318	1.24/ 18.82	10	1904	Samuel R. Small
10	Regions Bank 1010 Gervais St. Columbia, SC 29201 (803) 779-3836 / (803) 779-9214 www.regionsbank.com	\$288,185	\$50,885,500	\$129,669	1.04/ 12.79	9	1928	Carl Jones Jr./ Mark Cox

NOTES: Deposits totals and number of branches are as of June 30, 2004. Assets, earnings, Return on Assets (ROA) and Return on Equity (ROE) are from banks and the FDIC and are through March 31, 2005. Wachovia's data do not include its purchase of SouthTrust Bank. First Citizens' data do not include its purchase of People's Community Capital Corp. SOURCE: Federal Deposit Insurance Corp. Compiled by Ben Werner

Columbia Business Journal's
Top 10 List. We're on it.
firstcitizenonline.com



LARGEST AREA CHILD-CARE FACILITIES *Ranked by licensed child capacity*

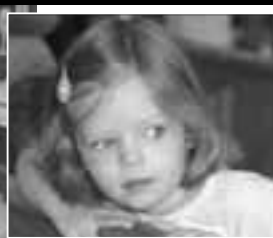
Rank	Name Address Phone	Licensed capacity	Hours/Ages served	Services provided	No. of staff	Director
1	V.V. Reid Nursery and Kindergarten 6100 David St. Columbia, SC 29203 (803)754-3313	400	6:30 a.m. to 6 p.m./ 3 years to fifth grade	Daily devotion, language arts, social studies, Spanish, science, music, computers, chess, Tae Kwon Do, piano, ballet	50	Janie Williams
2	Temple Baptist Church CDC 806 Universal Drive Columbia, SC 29209 (803) 783-0252	387	7:00 a.m. to 6:00 p.m./ infants to fifth grade	SBC WEE Learn Curriculum, pre-kindergarten for infants to age four, afterschool program, summer program	22	Lavinia Hucks
3	Union United Methodist Church Preschool and Kindergarten. 7582 Woodrow St. Irmo, SC 29063 (803) 781-0630	375	7:45 a.m. to 2 p.m./ 2 years to kindergarten	Lunch bunch, early bunch, Bilingual Buddies, computer kids, music, chapel	37	Barbie Creswell
4	Grace Day Care 416 Denham Ave. West Columbia, SC 29169 (803) 794-8996	289	7:30 a.m. to 6 p.m./ 6 weeks to 4 years	N/A	15	Carolyn Moss
5	Eastminster Day School 3200 Trenholm Road Columbia, SC 29204 (803) 771-1512	272	7:30 a.m. to 6 p.m./ 6 weeks to 6 years	Music, Spanish, kid fit, karate gymnastics, computers, art, science	45	Nele Baize
6	Lexington Medical Center Child Development 2720 Sunset Blvd. West Columbia, SC 29169 (803) 791-2067	271	N/A/ N/A	Corporate center for Lexington Medical Center employees	N/A	N/A
7	Chesterbrook Academy 1050 Wildewood Centre Drive Columbia, SC 29229 (803) 699-9988	260	7 a.m. to 6 p.m./ 18 months to second grade	Curriculum-based preschool program, early elementary program, summer camp, hot lunch, two snacks daily, Spanish, P.E., music, dance, karate, gymnastics, science, piano, tennis	35	Susan Asher
8	Timmerman School 2219 Atascadero Drive Columbia, SC 29206 (803) 782-2748	253	7:30 a.m. to 6:00 p.m./ 3 years to 13 years	Dance, piano and karate lessons, Bach Tots sports	18	Cindy Jones
9	Shandon Presbyterian Child Development Center 607 Woodrow St. Columbia, SC 29205 (803) 799-8533	251	7:30 a.m. to 6 p.m./ 8 weeks to 8th grade afterschoolers	Full day, half day and afterschool programs, free Spanish and music, gymnastics, karate, piano, ballet, bus from seven Richland 1 schools	42	Marcia Bacon
10	Northminster Early Child Development Center 6717 David St. Columbia, SC 29203 (803) 754-1812	240	6:30 a.m. to 5:45 p.m./ 2 years to 9 years	Creative curriculum, ballet, martial arts, behavior modification, Spanish	17	Monika Kerey-Green

SOURCES: S.C. Department of Social Services; interviews with facility directors.

Compiled by Chaunte McClure

If you're searching for something to believe in,
or for your children to believe in, find your way to

Union United Methodist Church



Preschool/Kindergarten Program
for children ages 18 months thru five years old

Sundays

- Traditional Worship – 8:00 and 10:30 a.m.
- Sunday School – 9:15 a.m.
- Methodist Youth Fellowship – 6 p.m.

Wednesdays

- Bible Studies – 6:30 p.m.
- Choirs for all ages



60980-58

7582 Woodrow Street • Irmo, South Carolina • 803.781.3013 • www.unionunitedmethodist.org

LARGEST AREA CPA FIRMS *Ranked by number of local professional staff*

Rank	Name Address Phone/Fax/Web site	Professional staff	Support staff	Offices	Managing partner(s)	Areas of specialty	Year founded locally
1	Elliott Davis LLP 1901 Main St., Suite 1650 Columbia SC 29201 (803) 256-0002 / (803) 254-4724 www.elliottdavis.com	42 local 206 total	4 local 34 total	1 local 6 total	James E. Hazel Jr., Todd R. Mitchell	Tax, business consulting, retirement plans, wealth management, valuation, banking, manufacturing, construction, real estate	1992
2	Grant Thornton LLP 1901 Main St., Suite 700 Columbia SC 29201 (803) 231-3100 / (803) 231-3057 www.grantthornton.com	37 local 3,923 total	4 local NA	1 local 49 total	Mark Ballew, W. Kelly Jones	Assurance, advisory and tax services, business valuation, international	1979
3	Bauknight Pietras & Stormer PA 1517 Gervais St. Columbia SC 29201 (803) 771-8943 / (803) 771-8958	30 local	9 local	1 local	Kenneth H. Bauknight	Technology/telecommunications consulting; real estate and hospitality industries, personal financial planning, estate planning, valuations	1991
4	McGregor & Co. LLP 3830 Forest Drive Columbia SC 29204 (803)787-0003 / (803)787-2299 www.mcgregorcpa.com	24 local 35 total	8 local 16 total	1 local 3 total	Gerald D. Skipper	Accounting; auditing; tax and management services	1930
4	Derrick Stubbs & Stith LLP 508 Hampton St. Columbia SC 29201 (803) 799-5810 / (803) 799-5554 www.dsscpa.com	24 local	3 local	1 local	A. David Masters	Accounting and auditing; tax planning and preparation; consulting services; estate planning and preparation; business advisory services; litigation support; business valuation	1950
6	J.W. Hunt & Co. 1607 St. Julian Place Columbia, SC 29202 (803) 254-8196 / (803) 256-1524 www.jwhunt.com	23 local	6 local	1 local	John C. Creech Jr., William F. Quattlebaum, Anne H. Ross	Accounting, auditing tax services, management, advisory services	1934
7	Moore Kirkland & Beauston LLP 150 N. Ninth St. West Columbia SC 29169 (803) 791-7472 / (803) 796-1168 www.mkbcpa.com	20 local 30 total	3 local 4 total	1 local 3 total	Stephen D. Kirkland, Ronald L. Moore	Audits of private and publicly traded companies, tax consulting, IT consulting, business advisory services	1982
8	Scott McElveen LLP 1441 Main St., Suite 1200, Columbia SC 29201 (803) 256-6021 / (803) 256-8346 www.scottmcelveen.com	19 local	5 local	1 local	N. Randolph Scott	Tax, audit and advisory services, small business accounting, business and financial planning, SEC auditing	1996
9	Sheheen, Hancock & Godwin LLP 1011 Fair St., Camden SC 29020 (803) 432-1424 / (803) 432-1831 www.shgcpa.com	16 local	12 local	1 local	Larry F. Godwin	Tax, audit, bookkeeping, business and personal advisory services	1959
10	Deloitte & Touche LLP 1426 Main St., Suite 820 Columbia SC 29201 (803) 255-7000 / (803) 256-4288 www.deloitte.com	15 local 22,168 total	2 local 6,035 total	1 local 100 total	Michael Baker	Energy and utilities, manufacturing, transportation, real estate, consumer business	1971

SOURCES: Information was compiled from interviews with company representatives.

Compiled by Ben Werner

NOTES: Local professional staff includes CPAs and accountants working toward certification in all local branches.



Helping Businesses Succeed And Families Prosper Since 1925.

Aiken (803) 649-1500	Anderson (864) 226-9514	Augusta (706) 722-9090	Columbia (803) 256-0002	Greenville (864) 242-3370	Greenwood (864) 229-4951	Laurens (864) 984-6618
--------------------------------	-----------------------------------	----------------------------------	-----------------------------------	-------------------------------------	------------------------------------	----------------------------------

LARGEST AREA CREDIT UNIONS *Ranked by assets as of March 2005*

Rank	Name Address Phone/Fax/Web site	Deposits	Assets	Loans	Members	Membership group includes, but not limited to:	Top local official	Year founded
1	SAFE FCU 160 Wesmark Blvd. Sumter, SC 29151 (803) 469-8600 / (803) 469-4050 www.safefed.org	\$390,674,173	\$441,479,006	\$245,047,119	96,302	People who live, work, attend school or worship in Richland, Lexington, and four other counties	Beverly A. Gagne	1955
2	AllSouth FCU 6923 N. Trenholm Road Columbia, SC 29207 (803) 782-9830 / (803) 782-3820 www.allsouth.org	\$324,665,584	\$369,848,642	\$217,575,479	88,730	People who live, work attend school or worship in Richland, Lexington and six other Midlands counties and active and retired members of the military	William A. Koehler	1960
3	S.C. State CU 800 Huger St. Columbia, SC 29202 (803) 343-0300 / (803) 343-0364 www.scscu.com	\$314,971,724	\$351,453,052	\$231,312,093	87,389	People who live, work or attend school in Richland, Lexington and six other counties	Rick Hammond	1952
4	Palmetto Citizens FCU 1320 Washington St. Columbia, SC 29201 (803) 779-1232 / (803) 376-8089 www.palmettocitizens.com	\$208,566,256	\$248,532,082	\$149,316,677	39,989	Individuals who live, work, attend school or worship in Fairfield, Lexington, Newberry and Richland counties	Nick Wodogaza	1936
5	May Plant CU 719 Highway 1 South Lugoff, SC 29078 (803) 432-8521 / (803) 425-1936 www.mayplantcreditunion.com	\$84,091,983	\$100,293,179	\$37,416,330	15,880	People who live, work or attend school in Kershaw County	Scott Conley	1961
6	Carolina Collegiate FCU 710 Pulaski St. Columbia, SC 29201 (803) 251-8474 / (803) 253-4175 www.carolina.org	\$49,961,615	\$58,645,437	\$41,999,947	15,538	Employees, students and alumni of the University of South Carolina, Coastal Carolina University, Midlands Tech	Anne G. Shivers	1967
7	Palmetto Health CU 9 Medical Park, Suite 240 Columbia, SC 29203 (803) 434-7548 / (803) 434-3768 www.palmettohealthcu.org	\$35,716,839	\$40,439,208	\$31,114,082	8,536	Employees of Palmetto Baptist and Palmetto Richland hospitals	Eric L. Jenkins	1964
8	SCARNG FCU 1225 Bluff Road Columbia, SC 29201 (803) 799-1090 / (803) 254-6315 www.scarngfcu.com	\$21,200,871	\$25,037,220	\$15,964,430	3,861	Members of the S.C. National Guard	Randall Robinson	1966
9	Columbia Post Office CU 1601 Assembly St. Columbia, SC 29201 (803) 739-1002 / (803) 779-3725	\$20,283,114	\$23,134,054	\$5,500,734	1,467	Career Columbia-area post office employees	Jim Lattimore	1927
10	Palmetto Trust FCU 1835 Assembly St. Columbia, SC 29201 (803) 252-0258 / (803) 376-5633 www.paltrustcu.coop	\$19,869,153	\$22,056,038	\$16,732,905	3,729	Federal employees who work in Columbia's Strom Thurmond Building	Lucile P. Beckwith	1953

SOURCES: National Credit Union Association, interviews with credit unions.

Compiled by Ben Werner

Here We Are Again...At The Top Of The List!

Why not join us? SAFE membership is a valuable employee benefit. We've been serving members for 50 years. Now you can provide the benefit of SAFE membership to your employees. It's easy. It costs you nothing, but it's a priceless benefit for them. We offer virtually every financial service: checking, competitive deposit and low loan rates, mortgages, and lots more. SAFE has offices in Columbia, W. Columbia, Lexington, Sumter, Shaw AFB, Camden, Florence, Bishopville, and Manning. This month our 14th office opens in the new Village at Sandhill in Northeast Columbia.

Come on...join SAFE today!

Just call ext. 399 or 266 and see why membership matters at SAFE. 803 796-7782 • 803 359-3277 • 803 469-8600 • 1-800-763-8600



NCUA

72495-68

LARGEST AREA ELECTRICAL CONTRACTORS *Ranked by number of local employees*

Rank	Name Address Phone/Fax/Web site	Local employees	Specialties	Notable projects	Year founded	Top local executive
1	Gregory Electric Co. 2124 College St. Columbia, SC 29205 (803) 748-1122 / (803) 748-1102 www.gregoryelectric.com	358	Wiring, line construction, preventative maintenance, piping, water fountains, directional boring, streetscapes	Strom Thurmond Wellness Center, Meridian Building, Harden St. streetscape, S.C. Army National Guard Leesville	1949	Robert E. Livingston Jr.
2	Boykin Contracting Inc. 167 Lott Court West Columbia, SC 29169 (803) 926-4930 / (803) 926-5146	85	Electrical and general contracting	V.C. Summer Nuclear training center, Columbia Owens Airport, Charleston Airport parking deck, Shaw Air Force Base munitions fencing	2000	Cory J. Adams
3	Eddins Electric Co. P.O. Box 3455 West Columbia, SC 29171 (803) 796-9078 / (803) 796-6381	80	Utility electrical contractor, electrical and signing	Harden Street/Five Points Streetscape Two Notch Road improvements	1979	William R. Robbie Dunton
4	H.R. Allen Inc. 3511 Delree St. West Columbia, SC 29169 (803) 796-7069 / (803) 794-7455 www.hrallen.com	75	Commercial electrical contracting	Palmetto Health Heart and Vascular Hospital, Columbia Metropolitan Convention Center, Lexington High School, Hopkins Middle School Lower Richland High School	1990	Erik Violette
5	Grant Contracting Inc. P.O. Box 2357 West Columbia, SC 29171 (803) 794-1251 / (803) 796-6381	74	Electrical and signing	Cooper River Bridge replacement	1982	Quency E. Grant
6	Burriss Electrical 5166 Sunset Blvd. Lexington, SC 29072 (803) 957-3350 / (803) 951-3634	53	Electrical contracting and construction	City of Columbia Drew Wellness Center, Palmetto Richland Labor and Delivery	1993	Christi Burriss
7	Shealy & Sons Electric Co. 517 Spring St. West Columbia, SC 29171 (803) 794-2322 / (803) 794-2736	30	Electrical contractor	Columbia Riverwalk, IGA-Pelion Olympia Mill Apartments	1956	Jimmy Shealy
8	Roberts Electric Co. 2210 Foreman St. Cayce, SC 29033 (803) 796-3710 / (803) 796-2151	20	Electrical contracting	Blue Cross/Blue Shield computer room, McMillan Federal Building	1959	Alan Butler
8	Seastrunk Electric Co. 1731 Harden St. Columbia, SC 29204 (803) 254-8684 / (803) 779-0203	20	Commercial and residential	Epworth Children's Home dining facility, renovations to Moncrief Army Community Hospital, renovations to Midlands Technical College-Beltline Campus	1927	G.E. Eddie Seastrunk
10	Beco Electric Inc. 1037 Keithwood Dr. Blythewood, SC 29016 (803) 754-8661 / (803) 754-8996	10	Commercial	Popeye's Chicken chain, S-Mart gas stations	1975	Bob Fugate Sr.

SOURCES: Information was compiled from mailed questionnaires and interviews with agency representatives.

Compiled by Taylor Smith



167 Lott Court, West Columbia, SC 29169

**Building For The Future
Serving Our Customers
Throughout The Southeast
(803) 926-4930**



72499-47

LARGEST AREA EMPLOYERS *Ranked by number of jobs, including part time*

Rank	Company Address Phone/fax Web site	No. of local employees	Top local official	Type of business	Company headquarters	Year founded locally
1	BlueCross BlueShield of S.C. I-20 at Alpine Road Columbia SC 29219 (803) 788-0222 www.southcarolinablues.com	7,300	Ed Sellers	Health insurance	Columbia	1946
2	Palmetto Health P.O. Box 2266 Columbia, SC 29202 (803) 434-7000 / (803) 434-3127	5,550	Kester Freeman Jr.	Health care	Columbia	1998
3	Lexington Medical Center 2720 Sunset Blvd. West Columbia 29169 (803) 791-2000 www.lexmed.com	4,000	Michael Biedinger	Healthcare facility	West Columbia	1971
4	SCANA 1426 Main St. Columbia SC 29218 (803) 217-9000 www.scana.com	3,500	William Timmerman	Utilities	Columbia	1846
5	Electrolux Rt. 22 Cameron Rd. Orangeburg, SC 29115 (803) 536-3285 / (803) 533-4772 www.electrolux.com	2,700	Gary Blankenship	Riding lawn tractors	Stockholm, Sweden	1997
6	Gold Kist Inc. 2050 Hwy. 15 South Sumter SC 29150 (803) 481-8555 / (803)481-4265 www.goldkist.com	2,260	Dennis Gordon	Poultry processing	Atlanta	1991
7	UPS 124 Creekside Road West Columbia 29172 (800) 7242-5877 www.ups.com	1,570	Nate Harrison	Package delivery	Atlanta	1908
8	Michelin North America 2420 Two Notch Road Lexington SC 29072 (803) 951-5200 www.michelin.com	1,530	Paul Fernandez	Tires	Clermont-Ferrand, France	1981
9	Wachovia Bank 1800 Main St. Columbia SC 29202 (803) 733-5450 www.wachovia.com	1,510	Kendall Alley	Banking	Charlotte	1991
10	Tuomey Medical Center 129 N. Washington St. Sumter SC 29150 (803) 778-9000 www.tuomey.com	1,500	Jay Cox	Health care	Sumter	1890

SOURCE: Greater Columbia Chamber of Commerce, S.C. Commerce Department, company representatives

Compiled by Jim DuPlessis

Like what you see today?
Don't miss tomorrow.

Call 771-8380 or 1-800-888-3566 to subscribe.



LARGEST AREA ENGINEERING FIRMS *Ranked by number of local engineers in 2005*

Rank	Name Address Phone/fax/Web site	Engineers locally/ worldwide	Staff locally/ worldwide	Managing principal(s)	Services	Specialties	Year founded
1	Wilbur Smith Associates 1301 Gervais St. Columbia, SC 29201 (803) 758-4500 / (803) 251-2064 www.wilbursmith.com	46/ 241	224/ 878	M. Stevenson Smith, Hollis Walker	Consulting, engineering, planning and economics	Planning and engineering for transportation, facilities infrastructure, economics and finance, site development and water resources	1952
2	B.P. Barber & Associates Inc. 101 Research Drive Columbia, SC 29203-9389 (803) 254-4400 / (803) 771-6676 www.bpbarber.com	40/ 60	N/A	G. Keith McLeod Jr.	Water supply and wastewater treatment systems, solid waste management and environmental, surveying and geographic information systems, subsurface utility engineering, civil, structural and electrical	Water and wastewater treatment and supply, site development and solid waste management, geographic information systems, subsurface utility engineering	1916
3	The LPA Group Inc. 700 Huger St., Columbia, SC 29201 (803) 254-2211 / (803) 779-8749 www.lpagroup.com	36/ 69	132/ 341	R. Glen Lott, Arthur E. Parrish	International transportation engineers, architects, planners	Airport, highway, bridge and architectural development programs	1981
4	Stevens & Wilkinson of S.C. Inc. 1501 Main St. Columbia, SC 29201 (803) 765-0320 / (803) 254-6209 www.stevensandwilkinson.com	23/ 49	47/ 121	Robert T. Lyles, Keith Branham, T. Ashby Gresette	Civil, structural, electrical, mechanical, plumbing and fire protection engineering	Institutional, educational, health care, offices, military, government	1919
5	Florence & Hutcheson Inc. 2700 Middleburg Drive, Suite 150 Columbia, SC 29204 (803) 254-5800 / (803) 929-0334 www.flohut.com	17/ 80	27/ 205	Robert J. Echols Jr., Benjamin G. Glunt, Daniel W. Thacher	Civil engineering consulting	Transportation planning, traffic engineering, roadway design, bridge design, construction engineering, material testing and inspection	1965
6	American Engineering 1300 12th St. Columbia, SC 29033 (803) 791-1400 / (803) 791-8110 www.aec-sc.com	13/ 13	31/ 31	William H. Bingham Jr., Kenneth A. Bingham, William H. Bingham Sr.	Civil and environmental engineering	Water resources, land planning, site development, road design and waste management	1994
7	GMK Associates 1201 Main St., Suite 2100 Columbia, SC 29201 (803) 256-0000 / (803) 256-9610 www.gmka.com	12/ 13	85/ 120	Jeff Bernagozzi, Brell Foster, Bruce Barragan	Mechanical, electrical, plumbing, fire protection and facility engineering	Health care, higher education	1993
8	Parsons Brinckerhoff 500 Taylor St., Suite 100 Columbia, SC 29201 (803) 227-3400 / (803) 227-3467 www.pbworld.com	11/ 5,000	35/ 9,000	Steve Page, Derek Piper	Planning, engineering, programming and construction	Transportation planning and engineering, construction management	1885
8	MACTEC Engineering and Consulting 720 Gracern Road, Suite 132 Columbia, SC 29210 (803) 798-1200 / (803) 750-1303 www.matec.com	11/ 1,155	30/ 3,200	Scott Anderson	Civil and environmental engineering	Construction, environmental services, facilities, industrial risk, transportation, telecommunications	1948
9	S&ME Inc. 134 Suber Road Columbia, SC 29210 (803) 561-9024 / (803) 561-9177 www.smeinc.com	10/ 150	35/ 700	Marty Baltzegar	Geotechnical engineering, environmental engineering, construction materials testing	Industrial, commercial, transportation, government projects	1973

SOURCES: Consulting Engineers of South Carolina membership directory, interviews with area engineering firms.

Compiled by Chaunte McClure

WILBUR SMITH ASSOCIATES
ENGINEERS PLANNERS ECONOMISTS

*SERVING CLIENTS THROUGHOUT
SOUTH CAROLINA & AROUND THE WORLD*

Wilbur Smith Associates
www.wilbursmith.com

78207-68

LARGEST AREA FOREIGN-OWNED OPERATIONS *Ranked by number of area employees*

Rank	Name Address Phone/Fax/Web site	Number of employees	Parent company	Local product	Top local official	Year founded locally
1	Electrolux Route 33, Cameron Road Orangeburg, SC 29115 (803) 536-3285 / (803) 533-4772 www.electrolux.com	2,700	AB Electrolux, Sweden	Riding lawn tractors	Gary Blankenship, plant manager	1997
2	Michelin 2420 Two Notch Rd Lexington, SC 29071-0579 (803) 951-5200 / (803) 951-5247 www.michelin.com	1,530	Michelin, France	Tires for cars, tractors and earth movers	Paul Fernandez, plant manager	1981
3	Westinghouse Nuclear Fuel 5801 Bluff Rd Columbia, SC 29209 (803) 776-2610 / (803) 647-3298/1000 www.westinghousenuclear.com	1,080	British Nuclear Fuels, United Kingdom	Nuclear fuel assemblies	Mark Fecteau, plant manager	1968
4	Bridgestone/Firestone 1 Bridgestone Parkway Graniteville, SC 29829 (803) 232-2000 / (803) 232-2012 www.bridgestone.com	950	Bridgestone Corp., Japan	Passenger and light truck tires	Mike Rose, plant manager	1997
5	Square D U.S. 76 Columbia, SC 29290 (803) 776-7500 / (803) 776-9027 www.squared.com	680	Schneider Electric, France	Industrial electrical controls	Jim McGinnity, plant manager	1972
6	Koyo 2850 Magnolia Street Orangeburg, SC 29115 (803) 536-6200 / (803) 534-0599 www.koyousa.com	600	Koyo Seiko Co. Ltd., Japan	Steel bearings	Steven R. McCullough, Yoshio Josh Ose, plant managers	1975
7	Siemens Diesel Systems 1410 Northpoint Blvd. Blythewood, SC, SC 29016 (803) 744-7000 / (803) 744-7069 www.usa.siemensvdo.com	500	Siemens AG (owns 51 percent of joint venture), Germany	Diesel fuel injectors	Uwe Wetzel, president	1999
8	FN Manufacturing 797 Clemson Road Columbia, SC 29229 (803) 736-0522 / (803) 699-9373 www.fnmfg.com	450	FN Herstal SA, Belgium	M-16 rifles, M-249 SAW and M-240 machine gun	Jean-Louis Vanderstraeten, chief executive	1980
9	Union Switch & Signal 645 Russell St. Batesburg-Leesville, SC, SC 29006 (803) 532-4432 / (803) 532-2940 www.switch.com	350	Finmeccanica S.p.A., Italy	Electronic assemblies	Pier Francesco Guarguaglini, chairman	1962
10	Devro-Teepak 785 Old Swamp Road Swansea, SC 29160 (803) 796-9730 / (803) 796-1636 www.devro.plc.uk	337	DEVRO PLC, Scotland, United Kingdom	Edible casings for meat packaging	Gordon Frame, plant director	1977

Sources: Company officials, SC Department of Commerce, South Carolina Industrial Directory

Compiled by Jim DuPlessis

Homes, homes on the page.



REAL ESTATE
& HOME
Sundays in
The State

LARGEST AREA HOMEBUILDERS *Ranked by number of permits issued in 2004*

Rank	Name Address Phone/Fax/Web site	Number of permits 2004	Value of permits 2004	Price range of homes	Representative developments in Midlands area	No. of local full-time employees	Local chief executive(s)	Year founded locally
1	Centex Homes 3740 Fernandina Road, Columbia, SC 29210 (803) 750-0101 / (803) 750-1657 www.centexhomes.com	290	\$35,571,816	\$90,000 to \$300,000	Berkshire, Olde Saluda Passage, Caedmons Creek, Timberland Place, River Club, Jacob's Creek, Windstone Townhomes	63	Ken Balogh	1989
2	Great Southern Homes A Firststar Company 1 Trentridge Court, Columbia, SC 29229 (803) 699-4734 / (803) 699-4735 www.firststarhomesinc.com	270	\$30,000,000	\$89,900 to \$700,000	Fox Run, Gatewood, Falls Mill Harborside at Lake Carolina, Woodleigh Park, Centennial at Lake Carolina, Vineyard Crossing, White Knoll, East Lake Cottages, Brookhaven, Hamlet at Lake Carolina	53	Michael P. Nieri	2000
3	The Mungo Companies 441 Western Lane, Irmo, SC 29063 (803) 749-9000 / (803) 749-5885 www.mungo.com	267	\$33,479,488	\$91,000 to \$1 million	Ascot, Milford Park, Foxport, Oak Pointe, Hawthorne, Hunter's Mill, Quail Ridge, Lakeport, Brookhaven, Ivy Square, Traditions, Preston Green	140	Steven Mungo, Stewart Mungo	1954
4	D.R. Horton/Torrey Homes 1345 Garner Lane, Suite 201A, Columbia, SC 29210 (803) 731-7922 / (803) 731-8425 www.drhorton.com	250	\$31,434,490	\$100,000 to \$350,000	Deer Lake, The Meadow's at Lake Carolina, The Mill, Sandy Glen at Lake Carolina, Sycamore Ridge, Cambridge Hills at Lake Carolina, Spring Knoll Brookshire at Lake Carolina, Chelsea Park West, Summer Knoll, Woodleigh Park	45	Ann Ivey	1997
5	Rymarc Homes 3600 Fernandina Road, Columbia, SC 29210 (803) 798-4900 / (803) 772-1919 www.rymarc.com	232	\$27,841,591	\$90,000 to \$150,000	Abington Park, Brookhaven, Ridgewood, Villages at White Knoll, Stoney Pointe Orchard Hill, Heather Hill	26	Ernie Magaro	1982
6	Essex Southeast 4458 Augusta Road, Bldg. 4C Lexington, SC 29072 (803) 356-8301 / (803) 356-8303 www.essexhomesse.com	189	\$33,304,150	\$145,000 to \$400,000	Laurel Chase, Churchview Commons, Longs Pond, Berkeley, Keller's Pond, Woodridge, Oakhurst Palmetto Place, Eagles Glen, Heritage Hills, Seaton Ridge, Stratford Plantation, The Farm, Manors at White Knoll, Winchester, Windemere	39	Karl Haslinger	1993
7	Shumaker Homes Inc. 5847 Shakespeare Road, Columbia, SC 29223 (803) 786-9780 / (803) 786-5464 www.shumakerhomes.com	153	\$21,764,670	\$100,000 to \$300,000	Jasmine Place, Bush River Plantation, Summerhill, Farming Creek, Walden Place, Congaree	50	Dan Shumaker, J. Allen Shumaker, Fred Berry	1965
8	Beazer Homes 140 Stoneridge Drive, Suite 100 Columbia, SC 29210 (803) 779-6063 / (803) 779-0116 www.beazer.com	141	\$16,650,670	\$90,000 to \$200,000	Highland Creek, Villages at Lake Shore, East Lake, Richmond Farms, Summerside at Summer Valley, Lakeshore at the Grove	36	Eddie Pate	1993
9	C&C Builders of Columbia Inc. 500 N. Brickyard Road, Columbia, SC 29223 (803) 736-5008 / (803) 736-0869 www.candcbuilders.com	130	\$13,266,923	\$90,000 to \$255,000	Plantation Pointe, Willow Lake, Point South The Highlands, Deerwood, Anden Hall, Lexington Hills, The Farm, Myers Creek, The Courtyards, Mason Ridge, Pine Forest, Autumn Wood, Magnolia Park	20	Cecil Brazell	1995
10	KB Home 101 Executive Center Drive, Suite 200 Columbia, SC 29210 (803) 612-5400 / (803) 798-8393 www.kbhome.com	104	\$11,690,110	\$82,990 to \$190,990	Indigo Springs, Milford Park, Thomaston Avebury, Hawthorne, Spears Creek Village, Gibson Terrace West, Rivendale, Sassafras Springs, Spears Creek Village	56	N/A	1997

Notes: Number and value of permits were obtained primarily from Market Opportunity Research Enterprises of Rocky Mount, N.C.

Compiled by Taylor Smith

Other information was obtained from telephone interviews with company representatives and the Home Builders Association of Greater Columbia.

Thank you homeowners, realtors, and business partners for making us the fastest growing home builder in South Carolina!



Great Southern Homes
A Firststar Company

1. Fox Run **At the Summit**
from the low \$100's
2. Gatewood **At the Summit**
from the high \$80's
3. Harborside **At Lake Carolina**
from the \$180's
4. Woodleigh Park **At Lake Carolina**
from the mid \$100's
5. Hamlet at Canterbury Park
At Lake Carolina from the mid \$100's

6. Falls Mill **The Villages at Longtown**
from the mid \$100's
7. East Lake Cottages **S.E. Columbia**
from the low \$100's
8. White Knoll **Lexington**
from the \$100's
9. Brookhaven **At Longtown**
from the low \$100's

10. Vineyard's Crossing **The Villages at Longtown**
from the high \$100's
11. Scott's Mill **Summerville**
from the mid \$100's
12. Village Green **Rock Hill**
from the mid \$100's
13. Centennial **At Lake Carolina**
from the \$130's

www.gshomes.gs



176837-06

LARGEST AREA HOSPITALS *Ranked by number of authorized beds*

Rank	Name Address Phone/Web site	Authorized beds	No. of doctors/ nurses	Full-time employees	Admissions	Outpatient visits	Annual budget	Administrator	Services
1	Palmetto Health Richland Five Richland Medical Park Drive, Columbia SC 29203 / (803) 434-7000 www.palmettohealth.org	649	895 975	3,405	35,011	472,028	\$1,820,649,623	James Lathren	Cardiovascular, Children's Hospital, trauma center, Total Joint Center, cancer care, Gamma Knife Center of the Carolinas
2	Palmetto Health Baptist Taylor at Marion Street, Columbia SC 29201 / (803) 771-5010 www.palmettohealth.org	467	804 653	2,141	24,544	193,839	\$1,820,649,623	Marty Bridges	Women's services, surgery, psychiatry, cancer care, PET imaging center
3	Providence Hospital 2435 Forest Drive, Columbia SC 29204-2098 / (803) 256-5310 www.provhosp.com	322	526 834	1,198	15,633	87,776	\$609,069,837	Stephen A. Purves	Cardiovascular care, general and orthopedic surgery, family practice, internal medicine, maternity, emergency, Life Reach helicopter, occupational medicine
4	Lexington Medical Center 2720 Sunset Blvd., W. Columbia, SC 29169 (803) 791-2000 www.lexmed.com	317	630 1050	4,000	19,100	600,000	\$361,000,000	Michael J. Biediger	Cancer treatment center, community medical and outpatient surgery centers, neurosurgery, orthopedic and bariatric surgery, cardiac catheterization lab
5	Regional Medical Center of Orangeburg & Calhoun Counties 3000 St. Matthews Road Orangeburg, SC 29118-1498 / (803) 533-2200 www.trmchealth.org	286	103 359	1,242	10,105	130,000	\$156,875,929	Thomas C. Dandridge	Cancer treatment, cardiac catheterization lab, blood assurance program, cardiopulmonary rehab, wound center, digital mammography
6	Tuomey Healthcare System 129 N. Washington St. Sumter, SC 29150 / (803) 778-9000 www.tuomey.com	248	150 349	1,500	11,455	135,800	\$378,500,000	Jay Cox	Cancer treatment center, women's and children's services, surgical center, home services, rehab center
7	G. Werber Bryan Psychiatric Hospital 220 Faison Drive Columbia, SC 29203 / (803) 935-7146 www.state.sc.us/dmh/bryan	245	17 59	531	1,846	None	\$28,300,000	Peter Getz	Psychiatry
8	William Jennings Bryan Dorn VA Medical Center 6439 Garners Ferry Road, Columbia, SC 29209 (803) 776-4000 www.va.gov/columbiasc	216	385 295	1,360	4,539	568,464	\$194,756,520	Brian Heckert	Primary care, surgical care, cancer treatment, mental health and related social services
9	Kershaw County Medical Center 1315 Roberts St., Camden, SC 29020 (803) 432-4311 www.kcmc.org	209	70 300	614	5,234	86,522	\$134,560,998	Donnie J. Weeks	Radiology, cardiac rehabilitation, diagnostic services, oncology, sleep diagnostics, general and specialty surgeries
10	Earle E. Morris Jr. Alcohol & Drug Addiction Treatment Center (Morris Village) 610 Faison Drive Columbia, SC 29203 / (803) 935-7335 www.state.sc.us/dmh/morris_village/index.html	120	5 22	173	1,949	None	\$9,300,000	Peter Getz	Substance-abuse care, group therapy, relapse prevention planning

SOURCES: S.C. Department of Health and Environmental Control, which authorizes the number of beds a hospital operates; hospital representatives.

Compiled by James D. McWilliams

Budget numbers for Richland and Baptist hospitals are combined, which are operated by Palmetto Health. Budget number for Providence hospital includes Providence Northeast. Both are operated by the Sisters of Charity Providence Hospitals.

EXPERIENCE, EXPERIENCE, EXPERIENCE



PROVIDENCE
HEART INSTITUTE

A Sisters Of Charity Ministry

2435 Forest Drive • Columbia, South Carolina 29204 • Telephone 256-5300 • www.provhosp.com

77628-67

LARGEST AREA HOTELS *Ranked by number of rooms*

Rank	Name Address Phone/Fax/Web site	No. of rooms	No. of employees	Corporate room rates	Year opened	Qwner	General manager	Amenities, entertainment and meeting facilities
1	The Columbia Marriott 1200 Hampton St. Columbia SC 29201 (803) 771-7000 / (803) 254-2911 www.marriottcolumbia.com	300	197	\$139	1983	MSPA Acquisition II LP	Don Bomer	Indoor pool and hot tub, grille and two lounges, 15 meeting rooms with a total of 27,000 sq. ft., gift shop, room service, wireless Internet, fitness room, Starbucks cafe
2	Carolinian Hotel 7510 Two Notch Road Columbia SC 29223 (803) 736-3000 / (803) 736-6399 www.hotelcarolinian.com	251	125	\$89 to \$109	1983	Midfirst Bank	Robert Liptak	Restaurant & lounge, indoor and outdoor pool, putting green; free Internet access, exercise room, pingpong and billiards
3	Columbiana Hotel and Conference Center 2100 Bush River Road Columbia SC 29210 (803) 731-0300 / (803) 731-4892 www.columbianahotel.com	237	200	\$99 to \$139	1984	Augusta Riverfront Limited Partnership	Allan Balocik	Restaurant and lounge, meeting rooms for 10 to 2,000 people, indoor and outdoor pools, whirlpool, keyed access, van transportation
4	Embassy Suites Hotel Columbia - Greystone 200 Stoneridge Drive Columbia SC 29210 (803) 252-8700 / (803) 256-8749 www.embassysuites.com	214	147	\$109 to \$189	1988	John Q. Hammons Inc.	Steve Graves	Complimentary breakfast and manager's reception, two-room suites with Internet access, refrigerator, microwave, indoor pool, fitness center, 15,000 sq. ft., of meeting space, business center
5	Travelodge Suites Northeast 1539 Horseshoe Drive Columbia SC 29223 (803) 736-1600 / (803) 736-6691 www.travelodge.com	192	41	\$49 to \$59	1977	Schneider Management Co.	Bill Lloyd	Indoor heated pool, outdoor pool, game room and pool tables; complimentary breakfast, rooms with coffee makers and hair dryers
6	Ramada Plaza Hotel 8105 Two Notch Road Columbia SC 29223 (803) 736-5600 / (803) 736-1241 www.columbiaramadaplaza.com	186	110	\$69-\$99	1986	IMIC Hotels	Tom Farrell	Restaurant & lounge, fitness center, outdoor pool, whirlpool, spa, 4,000 sq. ft. of meeting space rooms with safes, two-line phones, wireless Internet access,
7	Holiday Inn City Centre at USC 630 Assembly St. Columbia SC 29201 (803) 799-7800 / (803) 252-5909 www.holiday-inn.com	175	100	\$99 to \$129	1969	RFS Hotel Group	Michael Wells	Restaurant, sports bar, 9,000 sq. ft. of meeting space, priority club floor, outdoor pool, fitness facilities, free airport shuttle, rooms with two telephones, free Internet access
8	Clarion Town House Hotel 1615 Gervais St. Columbia SC 29201 (803) 771-8711 / (803) 252-9347 www.clariontownhouse.com	163	100	\$109	1996	Town House Associates Inc.	Bill Ellen	Restaurant & lounge, swimming pool, fitness room, room service, 9,000 sq. ft. of meeting space, free airport shuttle, ground-level parking, wireless Internet access
9	Columbia Courtyard - Northwest 347 Zimalcrest Drive Columbia SC 29210 (803) 731-2300 / (803) 772-6965 www.courtyard.com	149	40	\$74 to \$124	1989	Marriott International Corp.	Matt Barker	Restaurant, breakfast buffet, indoor Jacuzzi and fitness room, 750 sq. ft. of meeting space, business center, free, Internet access
10	Holiday Inn Columbia Airport 500 Chris Drive West Columbia, SC 29169 (803) 794-9440 / (803) 794-9449 www.holiday-inn.com	144	45	\$89	1967	Satya LLC	Tyson Schweitzer	Restaurant and lounge, 2500 sq. ft. of meeting space, complimentary breakfast, complimentary airport shuttle, fitness center, business center, guest laundry, valet service, free Internet access

SOURCE: Interviews with hotel representatives.

Compiled by Tanya Fogg Young

Courtyard by Marriott, Columbia NW
ideal for those smaller meetings!

Reserve your meeting space by September 1, 2005 and receive 50% off
of the rental fee. Meeting room capacity of 50 or less.

* Mention this coupon to receive discount. Coupon must be presented upon check-in.

Call our sales office at 803-731-2300



72494-68

LARGEST AREA MARKETING AND ADVERTISING AGENCIES *Ranked by billings for 2004*

Rank	Name Address Phone / Fax / Web site	Capitalized billings	No. of local full-time employees	Top local officials	Media director	Creative director	Production director	Representative clients	Year founded locally
1	Chernoff Newman 1411 Gervais St., Fifth floor, Columbia SC 29201 (803) 254-8158 / (803) 252-2016 www.cnsg.com	\$35,733,251	42	Lee Bussell, Rick Silver, David Anderson, David Campbell	Teri Buonasera	Melissa Young, Andy Riley, Jerre Threatt	Gayle Page	S.C. Lottery, Santee Cooper, Palmetto Health, National Bank of S.C.	2003
2	The Adams Group 925 Gervais St. Columbia SC 29201 (803) 765-1223 / (803) 254-4222 www.adamsgroup.com	\$13,340,750	19	Wayne Adams, Karis Hallman	Jeff Davis	Wayne Adams	Karis Hallman	Sticky Fingers, Kershaw County Medical Center, Community Bankshares, J. M. Smith Corp., Homeworks	1983
3	RIGGS 808-A Lady St. Columbia SC 29201 (803) 799-5972 / (803) 779-8447 www.riggsspeak.com	\$10,059,590	17	Cathy Monetti, Teresa Coles, Kevin Smith, John Durst	Joanne Wilson	Cathy Monetti	Tom Barr	S.C. Department of Commerce, First Community Bank, Lexington Medical Center, Palmetto Dunes	1987
4	The Gillespie Agency Inc. 3007 Millwood Ave. Columbia SC 29205 (803) 779-2126 / (803) 254-4833 www.thegillespieagency.com	\$9,673,017	6	Elaine Gillespie	Ashley Dusenbury	N/A	N/A	Hagemeyer, G&P Trucking, Carolina Ceramics, Remodelors Council, Sunland Dist., Howden Buffalo	1985
5	Fisher Communications 1237 Gadsden St. Columbia SC 29201 (803) 252-1221 / (803) 929-1456	\$8,111,391	2	Kevin Fisher	Beverly Flynn	Kevin Fisher	Beverly Flynn	Carolina's Hospital System, SCDOT, State Museum, Palmetto Citizens, SCDHEC, AgFirst, Turner Padgett, Lourie's	1990
6	Gasque Marketing and Advertising 3195 Leaphart Road West Columbia, SC 29210 (803) 791-0952 / (803) 791-0955 www.gasque.com	\$7,597,830	6	Ken Gasque	Tracy Graxley	Ken Gasque	Wendy Strader	Performance Friction, Consultants in Gastroenterology, Atlantic Foundation, Columbia Chamber of Commerce	1973
7	Semaphore, Inc. 828 Woodrow St. Columbia SC 29205 (803) 799-6464 / (803) 254-5186 www.semaphoreinc.com	\$7,387,117	11	Cynthia B. Gillam	Cindy Wade	Roc Jackson	N/A	Electric utilities, education, health care, foundations, economic development and manufacturing	1971
8	The AD Company 1220 Pickens St. Columbia, SC 29201 (803) 765-1133/(803) 252-6410 www.theadcompany.com	\$6,334,745	10	R. Lanier Jones	Jenny Mathews	R. Brian Murrell	Lauren Gray	Healthcare, legal, financial, schools, religious and non-profit organizations	1990
9	Fowler Communications 2725 Devine St. Columbia SC 29205 (803) 799-7550 / (803) 771-7442	\$4,327,936	7	Don Fowler, Carol Khare	Martha Ouzts	Vicki Johnson	N/A	DCI Group, S.C. Credit Union League, Coalition for Auto Repair Equality	1975
10	Maxim Communications Group, Inc. 1325 Park St., Suite 300 Columbia, SC 29201 (803) 748-7424 / (803) 748-7427 www.maximdigital.com	\$1,718,552	4	James B. Hardy IV	N/A	James B. Hardy IV	Collette Blakeney	Tourism, healthcare, nonprofit, transportation, state agencies, entertainment	1999

SOURCES: Information was compiled from mailed questionnaires and interviews with agency representatives. Only agencies that responded to the questionnaire and provided capitalized billings were eligible for the list.

Compiled by Taylor Smith

NOTE: (1) Capitalized billings represent agency income (from commissions, fees and consultation) multiplied by a factor of 6.67 to represent billables to clients with the agency keeping a 15 percent commission. The advertising industry capitalizes billings for size comparisons to level the playing field between agencies whose businesses are heavy in media billings and agencies whose businesses are more fee driven. Capitalized billings were verified by agencies' external accountants.

Log on. Sign up. Sit back.

Subscriber services

www.thestate.com

24/7

LARGEST AREA MANUFACTURERS *Ranked by number of full-time employees*

Rank	Name Address Phone/Web site	Number of full-time employees (1)	Headquarters	Chief executive	Product	Top local official	Year founded locally
1	Electrolux Route 33, Cameron Road Orangeburg, SC, 29115 (803) 536-3285 www.electrolux.com	2,700	Stockholm, Sweden	Hans Straberg	Riding lawn mowers	Gary Blankenship	1997
2	Gold Kist Inc. 2050 Hwy. 15 South Sumter, SC 29150 (803) 481-8555 www.goldkist.com	2,260	Atlanta, Ga.	John Bekkers	Chicken products	Dennis Gordon	1991
3	Michelin 2420 Two Notch Road Lexington, SC 29071 (803) 951-5200 www.michelin.com	1,530	Greenville	Jim Micali	Automotive and industrial tires	Paul Fernandez	1981
4	Amick Farms U.S. 178 Batesburg-Leesville, SC 29006 (803) 532-1400 www.amickfarms.com	1,300	Batesburg-Leesville	Dan Babb	Processed poultry	Ben Harrison	1948
5	Louis Rich 3704 Louis Rich Drive Newberry, SC 29108 (803) 276-5015 www.kraftfoods.com	1,200	Northfield, Ill.	Roger Deromedi	Turkey products	Lyle Olson	1972
6	Kimberly-Clark 246 Old Jackson Highway Beech Island, SC 29842 (803) 827-1100 www.kimberly-clark.com	1,100	Irving, Texas	Thomas J. Falk	Toilet paper and facial tissue	Tom Colgrove	1966
7	Westinghouse Nuclear Fuel 5801 Bluff Road Columbia, SC 29250 (803) 776-2610 www.westinghousenuclear.com	1,080	Daresbury, United Kingdom	Michael Parker	Nuclear fuel assemblies	Mark Fecteau	1968
8	Bridgestone/Firestone 1 Bridgestone Parkway Graniteville, SC 29829 (803) 232-2000 www.bridgestone.com	950	Tokyo, Japan	Shigeo Watanabe	Tires for cars and light trucks	Mike Rose	1997
9	Columbia Farms 338 Sunset Blvd. West Columbia, SC 29169 (803) 794-8440 www.houseofraeford.com	800	Raeford, NC	Robert Johnson	Poultry products	Jim Mabe	1982
10	Santee Print Works 19 Progress St. Sumter, SC 29150 (803) 773-1461	750	Sumter	Martin Barocas	Fabric printing and finishing	Martin Barocas	1950

Note: (1) - includes employment at all local facilities. For example, Michelin's employees include workers at its earthmover tire factory and its automobile tire plant in Lexington.
Sources: S.C. Department of Commerce, S.C. Industrial Directory, county economic development offices, companies

Compiled by JimDuPlessis

771-SOLD It's just that easy.

The  State **CLASSIFIED**

LARGEST AREA LAW FIRMS *Ranked by number of local attorneys*

Rank	Name Address Phone/Fax/Web site	Local attorneys	Total attorneys/ employees	Locations	Managing partner(s)	Areas of practice	Representative clients	Year founded locally
1	Nelson, Mullins, Riley & Scarborough LLP 1320 Main St., Columbia, SC 29201 (803) 799-2000 / (803) 256-7500 www.nelsonmullins.com	129	353 930	Atlanta, Charleston, Charlotte, Columbia, Greenville, Myrtle Beach, Raleigh, Washington DC, Winston-Salem	David E. Dukes	Pharmaceutical litigation, health care, corporate banking/finance	HCA, BMW, Bi-Lo	1897
2	Nexsen Pruet LLC 1441 Main St., Suite 1500, Columbia, SC 29201 (803) 771-8900 / (803) 253-8277 www.nexsenpruet.com	73	172 419	Charleston, Columbia, Hilton Head, Myrtle Beach, Greenville	William A. Pollard	Business law, litigation, business law, employment and labor, health care	Honda, Bank of America, Providence Hospital	1945
3	McNair Law Firm PA 1301 Gervais St., P.O. Box 11390 Columbia, SC 29211 (803) 799-9800 / (803) 799-9804 www.mcnair.net	55	131 360	Anderson, Bluffton, Charleston, Charlotte, Columbia, Georgetown, Greenville, Hilton Head Island, Myrtle Beach, Raleigh	M. William Youngblood	Corporate, litigation, government affairs, intellectual property, health care, tax/estate planning, immigration, municipal finance	SCANA, Colonial Life & Accident Insurance Co., Palmetto Health, Lang Mekra	1971
4	Haynsworth, Sinkler, Boyd PA 1201 Main St., 22nd floor, P.O. Box 11889 Columbia, SC 29201 (803) 779-3080 / (803) 765-1243 www.hsblawfirm.com	52	135 346	Charleston, Columbia, Greenville, Florence	Steve A. Matthews	Project finance, mergers and acquisitions, health care, securities, banking, litigation, technology, environmental, energy/telecom	Sonoco Products, Wachovia, Greenville Hospital System, University Medical Center	1951
6	Rogers, Townsend & Thomas PC 700 Gervais St., Columbia, SC 29201 (803) 771-7900 / (803) 343-7017 www.rtt-law.com	35	36 175	Columbia, North Myrtle Beach, St. Thomas, U.S. Virgin Islands	Board of Directors: Sam Waters, Richard Unger, Bryan Barnes	Litigation, default servicing/bankruptcy, real estate, business law	Drake Development Corp., Bank of America, CNA Insurance	1990
6	Turner, Padget, Graham & Laney PA 1901 Main St., Suite 1700, P.O. Box 1473 Columbia, SC 29202 (803) 254-2200 / (803) 799-3957 www.turnerpadget.com	34	73 212	Columbia, Charleston, Florence, Greenville	Lanneau W. Lambert Jr.	Environmental, real estate, torts, business and insurance, tax and labor	Allstate, BlueCross BlueShield of S.C., Liberty Mutual, Capital Wine and Beverage Co. of S.C., Bowater Corp., Wausau Insurance	1929
7	Richardson, Plowden, Carpenter & Robinson LLP 1600 Marion St., P.O. Box 7788 Columbia, SC 29202 (803) 771-4400 / (803) 779-0016 www.rpclaw.com	29	33 94	Columbia, Myrtle Beach	Francis M. Mack	Corporate, construction, litigation, tax, estate planning, governmental	St. Paul Insurance, Bonitz, Palmetto Health CNA	1973
8	Ellis, Lawhorne & Sims PA 1501 Main St., Fifth floor, P.O. Box 2285 Columbia, SC 29202 (803) 254-4190 / (803) 779-4749	28	28 68	Columbia	William P. McElveen Jr.	Corporate, real estate, administrative and regulatory, litigation, tax, business succession planning, estate planning	AT&T Communications, Miller-Valentine Group, UBS Paine Webber Bi-Lo	1979
8	McAngus, Goudelock & Courie LLC 700 Gervais St., Suite 300 Columbia, SC 29201 (803) 779-2300 / (803) 748-0526 www.mgclaw.com	28	58 188	Columbia, Charleston, Greenville, Charlotte	James R. Courie	General/commercial litigation, occupational disease, health care, probate and estate planning, administrative, real estate, governmental relations	Workers' Compensation/ Companion Property & Casualty Insurance Co., Wachovia, Michelin	1995
10	Berry, Quackenbush & Stuart PA 1122 Lady St., 5th floor Columbia, SC 29201 (803) 779-2650 / (803) 255-0179 www.bqslaw.com	23	23 57	Columbia	Joe E. Berry Jr., Theodore von Keller, Hardwick Stuart Jr	Bankruptcy, real estate, foreclosure, collections, pre-paid legal service, government relations, estate planning	The Climatic Corp., Rymarc Homes, S.C. Liquor Wholesale Association, JM Family, S.C. Association of Chain Drug Stores, Golden Rule Insurance Co.	1995

SOURCE: Law firm representatives, S.C. Lawyers Weekly, Martindale-Hubbell, Lexis-Nexis.

Compiled by James McWilliams

Succeed

The Ellis Lawhorne Management Group provides companies and business leaders with the knowledge, insight, ability and experience to succeed. Led by Lyles Glenn and Allan Stalvey, the Ellis Lawhorne Management Group's services include:

- Federal and State Legislative Advocacy
- Request for Proposal Development, Response Preparation and Presentation
- Legislative Strategic Planning
- Executive Management
- Real Estate Development
- Legislative and Administrative Monitoring
- Cost Reduction Strategy

ELLIS:LAWHORNE

MANAGEMENT GROUP

Ellis Lawhorne Management Group, LLC
Carolina First Building, 1501 Main Street
803-254-4190 • Ellislawhornegroup.com

Ellis Lawhorne Management Group is a wholly owned subsidiary of the Ellis Lawhorne law firm.

77991-46

LARGEST AREA OFFICE BUILDINGS *Ranked by square feet*

Rank	Name Address	Square feet	Available square feet	Range square feet	Price range square feet	Services included in rent (1)	Leasing agency/ agent phone	Representative tenants	No. floors
1	Capitol Center (The former SouthTrust building) 1201 Main St. Columbia, SC 29201	466,000	60,000	927 to 60,000	\$17.50-\$18.50	T,I,J,S, H,E,M,W	Colliers Keenan Inc. Beronica Whisnant (803) 401-4207	State of S.C., Capital City Club, S.C. Chamber of Commerce, GMK, Haynsworth Sinkler Boyd	25
2	Palmetto GBA 17 Technology Circle Columbia, SC 29203	456,304	N/A	N/A	N/A	Owner occupied	N/A	Palmetto GBA	2
3	Palmetto Center 1426 Main St. Columbia, SC 29201	456,218	N/A	N/A	\$20	T,I,J,S, H,M,W	Bob Wright (803) 217-8083	SCANA and Wachovia	20
4	Meridian 1320 Main St. Columbia, SC 29201	350,000	103,798	1,500 to 22,311	\$22	T,I,J,S, P, H,E,M,W	Colliers Keenan Inc. Bruce Harper and Tommy Johnson (803) 254-2300	Nelson Mullins Riley and Scarborough, Ogletree Deakins Nash Smoak, IKON, Ameriquest, Fannie Mae, Keenan Suggs Bowers Elkins, Jefferson Pilot	17
5	Colonial Supplemental Insurance 1200 Colonial Life Blvd. Columbia, SC 29210	345,642	N/A	N/A	N/A	Owner occupied	N/A N/A	Colonial Supplemental Insurance	4
6	BlueCross BlueShield of S.C. 4101 Percival Road Columbia, SC 29229	318,740	N/A	N/A	N/A	Owner occupied	N/A	BlueCross BlueShield of S.C.	4
7	Bank of America Plaza 1901 Main St. Columbia, SC 29201	302,843	25,000	3,400 to 13,500	\$18	T,I,J,S,H, E,P,M,W	NAI Avant H. Paul Hartley Jr. (803) 744-9824	Bank of America, NAI Avant, Turner Padgett Graham & Laney, UBS, AXA Financial Advisors	18
8	BlueCross BlueShield of S.C. (Alpine Building) 2501 Faraway Dr. Columbia, SC 29223	300,000	N/A	N/A	N/A	Owner occupied	N/A	BlueCross BlueShield of S.C.	12
9	The Tower at 1301 Gervais 1301 Gervais St. Columbia, SC 29201	296,797	25,366	500 to 14,216	\$15.50 to \$16.50	T,I,J,S,H, M,E,W, P	Colliers Keenan Inc. David C. Lockwood (803) 401-4211	McNair Law Firm, Wilbur Smith, Colliers Keenan, Summit Club	20
10	BlueCross BlueShield of S.C. (Atrium Building) 2401 Faraway Dr. Columbia, SC 29223	285,000	N/A	N/A	N/A	Owner occupied	N/A	BlueCross BlueShield of S.C.	4

SOURCE: Edens & Avant; interviews with leasing company representatives.

Compiled by Taylor Smith

NOTES: (1) T-taxes, I-insurance, J-janitorial, S-security, H-heat, E-electricity, M-maintenance, P-parking, W- water/sewer
**NA - not applicable
Several buildings have parking garages but the cost is not included in rent.



Ellis Lawhorne, one of South Carolina's premier full-service law firms, wishes to thank HomeWorks of South Carolina and its volunteers for their leadership toward improving the quality of life for South Carolinians in need. For nearly a decade, this valuable program has brought together teens and young adults to renovate homes and empower vulnerable communities. For their efforts, we have pledged - in partnership with the Central Carolina Community Foundation - our time and funds to help HomeWorks fulfill its mission, and we encourage our professional colleagues to do the same.

Lead

ELLIS:LAWHORNE

Ellis, Lawhorne & Sims, P.A.
Carolina First Building, 1501 Main Street
803-254-4190 • www.ellislawhome.com

77992-46

LARGEST AREA MEETING SPACES *Ranked by number of units*

Rank	Name Address Phone/Fax/Web site	Square footage	Ceiling height	Range of room sizes	No. of rooms	Theater capacity	Classroom capacity	Banquet capacity	Reception capacity	Contact person
1	Columbia Metropolitan Convention Center 1101 Lincoln St., Columbia, SC 29201 (803) 545-0001 / (803) 545-0013 www.columbiaconventioncenter.com	142,500	12' to 32'	950 to 24,700	8	70 to 1,300	40 to 950	40 to 1000	3,000	Star Drakeford
2	S.C. State Fairgrounds 1200 Rosewood Drive, Columbia, S.C. 29201 (803) 799-3387 / (803) 799-1760 www.scstatefair.org	130,256	16' to 18'	2,070 to 40,000	7	2,200	1,140	2,160	2,880	Tim Wilson
3	Colonial Center 801 Lincoln St., Columbia, SC 29208 (803) 576-9200 / (803) 576-9299 www.thecolonialcenter.com	52,000	16' to 65'	25 to 17,000	8	4,000 to 13,000	1,260	1,810	2,410	Tom Paquette
4	Columbia Conference Center 169 Laurelhurst Ave., Columbia, SC 29210 (803) 772-9811 / (803) 454-2028 www.columbiameetings.com	40,000	14' to 22'	250 to 6,175	10	500	300	350	900	Kim Inman
5	The Columbia Marriott 1200 Hampton St., Columbia, SC 29201 (803) 771-7000 / (803) 254-8307 www.adamsmark.com	27,000	14' to 16'	572 to 6,683	15	30 to 850	25 to 350	30 to 500	40 to 850	Steve Williams
6	Columbiana Hotel and Conference Center 2100 Bush River Road, Columbia, SC 29210 (803) 731-0300 / (803) 731-4892 www.columbianahotel.com	24,000	14' to 20'	354 to 11,000	12	1,500	600	1,000	1,800	Carlos Morales
6	Jamil Temple 206 Jamil Road, Columbia, SC 29210 (803) 772-9380 / (803) 772-9382	24,000	20'	300 to 24,000	4	3,000	150	2,000	2,500	Joe Hilton
7	Saluda Shoals Park 5605 Bush River Rd., Columbia, SC 29212 (803) 213-2026 / (803) 213-2049 www.icrc.net	23,000	10' and cathedral ceilings	600 to 5,000	9	60 to 450	30 to 300	272	45 to 500	Lori Shaffer
8	Riverbanks Zoo and Garden 500 Wildlife Blvd., Columbia, SC 29210 (803) 779-8717 / (803) 253-6381 www.riverbanks.org	22,700	10' to 15'	3,000 to 7,000	8	200 to 400	75 to 150	150 to 300	300 to 600	DorothyTeam
9	Carolina Coliseum 701 Assembly St., Columbia, SC 29201 (803) 777-5113 / (803) 777-5114 www.coliseum.sc.edu	17,820	74' arena floor	125 to 12,803	4	12,803	N/A	1,800	2,000	Julie Carter

SOURCES: Columbia Metropolitan Convention and Visitors Bureau; interviews with space representatives.

NOTES ABOUT SPECIFIC FACILITIES: 1. Carolina Coliseum's square footage includes the arena floor only. 2. The Moore Building at the S.C. State Fair is a clear-spanned space. 3. Most facilities at Riverbanks Zoo and Gardens are available only after the zoo has closed. None of the facilities connect to each other. 4. Saluda Shoals Park has indoor and outdoor space.

Compiled by Taylor Smith



HOFFP

GALLERY

“...A STUNNING EVENT!”

“A UNIQUE EXPERIENCE...”

803.799.7405 • 2828 Devine St • hofpgallery.com

Experience Columbia's most vibrant and relaxed reception space. The ground floor is hung in the salon style with an exciting array of art in all styles. The second floor is the scene for rotating shows by artists from around the world and around the corner.

Complete with an outdoor terrace, the gallery offers a spectacular setting for private parties, wedding receptions and business functions.

52038-49

LARGEST AREA OFFICE PARKS *Ranked by square feet*

Rank	Name Location	Total square feet	Number of buildings	Leasing agent	Price range	Representative tenants	Services included in rent locally
1	Carolina Research Park I-77 and I-20 Columbia, SC 29223	727,100	11	S.C. Research Authority (843) 760-3222	\$75,000 an acre	Palmetto GBA, SCE&G, Ikon, Holopak, Midlands Tech, Seaman's	N/A
2	Synergy Executive Center I-20 and Bush River Road Columbia, SC 29223	516,000	8	NAI Avant (803) 254-0100	\$14.50 to \$16 per sq. ft.	S.C. Department of Labor, Ford Motor Credit, DR Horton	Full service
3	Medical Park 1,2,3,4,9,14 Medical Park Road Columbia, SC 29204	505,808	6	Consera Healthcare for Bldgs. 2,4,9,14 (803) 454-2340 Cogdell Spencer Advisors for Bldgs. 1&3 (803) 779-2680	\$21.50 to \$23.88 per sq. ft.	Private physicians	Full service
4	Gateway Corporate Center 110 Gateway Corp. Blvd. West Columbia, SC 29203	489,000	8	Colliers Keenan (803) 254-2300,	\$15 to \$22 per sq. ft.	Image Care, Courtyard by Marriott, Nationwide, Providence Hospital, Pinnacle Point Office Park	T,I,M,S,W,P
5	Middleburg Office Park St. Julian Place near Forest Drive and Providence Hospital Columbia, SC 29202	440,000	26	Various	\$12.50 to \$16 per sq. ft.	Florence & Hutcheson Inc., Dept. Health and Environment Control, Turbeville Insurance Agency, Workplace Solutions, First Citizens, Queue Systems	T,I,M,S,W,P
6	WestPark Fernandina Road, off I-26 Columbia, SC 29211	350,000	26	Various	Various	FBI, S.C. Healthcare Associates, Powers Engineering, S.C. Sheriffs, S.C. Medical associations	N/A
7	Fontaine Business Center 400 Arbor Lake Drive Columbia, SC 29223	309,000	5	Colliers Keenan (803) 254-5000	\$9 to \$17 per sq. ft.	Clean Harbors, Enterprise Leasing, First Citizens Bank	T,I,M,S,W,P
8	Center Point 2000 Center Point Columbia, SC 29210	272,000	4	Colliers Keenan (803) 254-5000	\$17 to \$19 per sq. ft.	BellSouth Advertising and Publishing Co., Alltel, Intel, S.C. Hospital Association, Strayer University	T,I,M,S,W,P
9	Baptist Medical Complex 1301-1333 Taylor St. Columbia, SC 29204	259,324	2	Consera Healthcare (803) 454-2340	\$18 per sq. ft.	Tenants and private physicians	Full service
10	Landmark Forest Drive at Beltline Blvd Columbia, SC 29204	244,500	3	NAI Avant (803) 254-0100	\$14 to 15 per sq. ft.	Chicago Title, Morris Law Firm, S.C. Department of Consumer Affairs	Full service

SOURCE: Edens & Avant; interviews with leasing company representatives.

Compiled by Taylor Smith

NOTES: (1) T-taxes, I-insurance, J-janitorial, S-security, H-heat, E-electricity, M-maintenance, P-parking, W- water/sewer
 **NA - not applicable
 Several buildings have parking garages but the cost is not included in rent.

**GAMECOCKS AND TIGERS
 AND WRITERS — OH, MY!**

Award-winning
 SPORTS coverage.
The State

LARGEST AREA PRIVATE SCHOOLS *Ranked by 2004-05 enrollment*

Rank	Name Address Phone/Fax/Web site	Enrollment 2004-05	Faculty 2004-05	Grades	Affiliation	Gender	Tuition 2004-05	Administration	Year founded
1	Hammond School 854 Galway Lane, Columbia, SC 29209 (803) 776-0295 / (803) 776-0122 www.hammondschool.org	970	112	PreK-12	Independent	Coed	\$5,950 to \$10,895	Herbert Barks	1966
2	Orangeburg Preparatory School Upper school: 2651 North Road Lower school: 168 Prep St. NW Orangeburg, SC 29118 (803)534-7970 / (803)535-2190 www.orangeburgprep.com	830	75	PreK-12	Independent	Coed	\$3,120 to \$4,428	Kelley Mims	1984
3	Ben Lippen Schools P.O. Box 3999, Columbia, SC 29230 (803) 786-7200 / (803) 744-1387 www.benlippen.com	825	108	PreK-12	Independent evangelical Christian	Coed	\$5,086 to \$8,748	Donald Kauffman	1940
4	Heathwood Hall Episcopal School 3000 S. Beltline Blvd., Columbia, SC 29201 (803) 765-2309 / (803) 343-0437 www.heathwood.org	802	99	PreK-12	Episcopal	Coed	\$3,295 to \$11,570	Stephen D. Hickman	1951
5	Wilson Hall 2801 S. Wise Drive, Sumter, SC 29150 (803) 469-3475 / (803) 469-3477 www.wilsonhall.org	777	77	PreK-12	Independent	Coed	\$4,030 to \$4,450	Frederick B. Moulton	1966
6	Thomas Sumter Academy P.O. Box 869, Dalzell, SC 29040 (803) 499-3378 / (803) 499-3391 www.thomassumter.net	560	72	PreK-12	Independent	Coed	\$1,971 to \$4,490	William J. Hentges	1964
7	Calhoun Academy P.O. Box 526 81 Academy Rd., St. Matthews, SC 29135 (803) 874-2734 / (803) 874-2734 www.calhounacademy.org	546	48	PreK-12	Independent	Coed	\$1,812 to \$3,348	Milly G. McLauchlin	1969
8	Timmerman School 2219 Atascadero Dr., Columbia, S.C. 29206 (803)782-2748 / (803)787-3925 www.timmermanschool.com	420	40	K3-8	Independent	Coed	\$3,057 to \$4,233	Elizabeth T. Jordan	1954
9	Cardinal Newman School 4701 Forest Drive, Columbia, SC 29206 (803) 782-2814 / (803) 782-9314 www.cnhs.org	411	53	Seven - 12	Roman Catholic	Coed	\$5,916 to \$6,696 parishioners, \$6,816 to \$7,656 others	Rose Tindall, Danny Dorsel (interim)	1961
10	Holly Hill Academy 142 Bunch Ford Road P.O. Box 757, Holly Hill, SC 29059 (803)496-3243 / (803)496-9778 www.hollyhillacademy.org	390	33	PreK-12	Independent	Coed	\$1,300 to \$3,025	John Gasque	1970

SOURCES: Information was compiled from schools and S.C. Department of Education.
* Ben Lippen enrollment is for all three campuses.

Compiled by Noelle Phillips



Remodeling • Restoration
New Home Construction
 Bathrooms • Kitchens • Additions • Decks
 Patios • Fireplaces • Hardwood Floor
 Ceramic Tile • Sheetrock • Painting
 Trim Carpentry • Back Hoe Service
Complete Home Remodeling

Sherborne Builders
 Phone: 803.736.0601
 www.sherbornebuilders.com

77996-92

LARGEST AREA STAFFING SERVICES *Ranked by number of local employees*

Rank	Name Address Phone/Fax/Web site	No. of local employees	Local offices	No. of workers placed weekly	Services offered to employers	Local manager	Year founded locally
1	Roper Personnel Services 220 Executive Center Dr. Columbia, SC 29210 (803) 798-8500 / (803) 798-5691 www.roperstaffing.com	27	4	154	Administrative, manufacturing, production, warehouse accounting, legal	George Roper, owner Barbara West, general manager	1982
2	Gallman Personnel Services 1360 Browning Road Columbia, SC 29210 (803) 772-8046 / (803) 750-4177 www.gallmanpersonnel.com	25	5	100	Clerical, light industrial, engineers, manufacturing management, construction management, IT, logistics	Charlie Gallman	1985
3	Kelly Services 250 Berryhill Road, Suite 115 Columbia SC, 29210 (803) 798-0765 / (803) 772-7598 www.kellyservices.com	20	6	500+	Clerical, light industrial, technical, customer service representatives, financial, medical	Jeff Bujak	1976
4	Jerman Personnel 455 St. Andrews Rd., Suite C4 (803)798-0556 / (803)731-7771 Columbia, SC 29210 www.jermanpersonnel.com	15	1	50	Administrative, manufacturing, production, accounting, banking, warehouse, skilled electricians, painters	Tony Cashion	1988
5	AppleOne Inc. 224 O'Neil Court, Suite 20 Columbia, SC 29223 (803) 699-9941 / (803) 699-9981 www.appleone.com	14	75	25 to 50	Professional, general office, clerical, accounting, administrative, customer service	Travis Price (Northeast) Sheri Dickert (Harbison)	1997
6	RandStad 612 St. Andrews Rd. (803) 772-1211 / (803) 772-1244 Columbia, SC 29210 www.us.randstad.com	12	5	200 to 250	Administrative, professional, accounting, legal, temporary, temp to hire, direct hire positions	Jane Simmon	1996
7	Companion Employment Services 2511 Devine St. (803) 771-6454 / (803) 771- 2783 Columbia, SC 29205 www.cestemps.com	10	3	20 to 50	Medical, administrative, light industrial accounting, legal	Tom Poole	1986
7	Capital Personnel Service Inc. 1950 Bush River Road (803) 772-0440 / (803) 772-9778 Columbia, SC 29210 www.capitalpersonnel.net	10	1	250 to 300	Clerical, industrial, technical, temporary, temp to hire, permanent placement, employee screening	William Ellerbe	1984
8	The Flemming Group Inc. 4949 Two Notch Road, Suite 111 (803) 691-4530 / (803) 691-4532 Columbia, SC 29204 www.theflemminggroupinc.com	9	1	7 to 10	Administrative, executive search, light industrial, financial, training	Cynthia Tucker	2000
9	Snelling Personnel Services of the Midlands 6941 N. Trenholm Road, Suite G-1 Columbia, SC 29206 (803) 790-7171 / (803) 359-3008 www.snelling.com/midlands	6	2	130	Professional, administrative, accounting IT, light industrial, warehouse, medical, legal, temp to hire	Elizabeth Smith, Bryce England	1982

SOURCES: S.C. Association of Personnel Services, Greater Columbia Chamber of Commerce, interviews with company officials.

Compiled by Chaunte McClure

Elizabeth Smith is One in a Million!
As a "20 Under 40" Leader in the
Midlands, she is our Community Friend
at Snelling Personnel who works for You!



elizabeth@careerSC.com
www.Snelling.com/midlands
803-790-7171

"Helping Others Achieve the Success They Desire"

72500-88

LARGEST AREA COMMERCIAL REAL ESTATE FIRMS *Ranked by number of full-time, local brokers*

Rank	Name Address Phone/Fax/Web site	No. full-time brokers	Other employees	Site services offered	Leasing services offered	Property mgt. services offered	Local office head	Year founded locally
1	Colliers Keenan 1301 Gervais St., Suite 600 Columbia, SC 29201 (803) 254-2300 / (803) 252-4532 www.collierskeenan.com	30	64	Office, retail, industrial, multifamily, apartments, investment, land, medical, development services	Office, retail, shopping centers, land, medical, industrial	Yes	John W. Folsom	1906
2	NAI Avant 1901 Main St., Suite 200 Columbia, SC 29201 (803) 254-0100 / (803) 744-9875 www.naiavant.com	26	26	Office, retail, industrial, warehouse, medical, land	Office, retail, industrial, warehouse, medical	Yes	Dan Avant	1965
3	CB Richard Ellis 1333 Main St., Suite 700 Columbia, SC 29201 (803) 779-7777 / (803) 931-8989 www.cbre.com	16	11	Retail, office, industrial, multifamily, land, site location, investments	Retail, office, industrial, land	Yes	Lee Marsha	1983
3	Grubb & Ellis Wilson/Kibler 1111 Laurel St. Columbia, SC 29201 (803) 779-8600 / (803) 252-4323 www.wilsonkibler.com	16	9	Office, retail, industrial, multifamily, investments, land	Office, retail, industrial, land	Yes	C. Marshall Kibler	1987
5	Dial Dunlap & Edwards 1122 Barnwell St. Columbia, SC 29201 (803) 799-6244 / (803) 799-4288	9	2	Office, retail, industrial, mixed use, apartments, land	Retail, office, industrial, warehouse	Yes	Kathy Edwards	1985
6	Century 21 Bob Capes Realtors 300 Candi Lane Columbia, SC 29210 (803) 779-4503 / (803) 343-2709 www.century21bobcapes.com	7	4	Investments, land, multifamily retail, office, medical, re-development, industrial	Office, retail, warehouse, industrial, medical	Yes	James W. Derrick Jr.	1969
7	Century 21 McDaniel & McDaniel 6040 Wescott Road Columbia, SC 29212 (803) 781-4663 / (803) 749-6108 c21realestateservices.com	4	12	Office, retail, industrial, multifamily, development, investments, land	Office, retail, industrial, warehouse	Yes	Cary McDaniel	1978
7	RE/MAX Real Estate Services 426 Bush River Road, Columbia, SC 29210 (803) 731-2466 / (803) 731-0602 www.wesellhouses.com	4	5	Office, retail, industrial, multifamily, apartments, investments, land, medical, hotel	Office, retail, industrial, warehouse, medical	Yes	David K. Ness	1990
7	W.S. Commercial Real Estate 111 Executive Pointe Blvd. Columbia, SC 29210 (803) 731-9494 / (803) 731-9495 www.wscrealestate.com	4	2	Office, retail, industrial, multifamily, medical, land	Office, retail, industrial, medical, investments, land	Yes	William F. Smith III	1985

SOURCES: Information was compiled from mailed questionnaires and interviews with agency representatives.

Compiled by Taylor Smith



The sunglasses.
Purchase of the sunglasses manufacturing facility.
Lease for the sunglasses retail outlet chain.
Financing for the sunglasses company's global headquarters.

CBRE
CB RICHARD ELLIS

*The right business partner
for all your real estate needs.*
#1 in commercial real estate worldwide
www.cbre.com

176836-06

Commercial Real Estate Services 1333 Main Street, Suite 700 Columbia, SC, 29201
Telephone: (803) 779-7777 Fax: (803) 931-8989 Lee Marsha, Broker-In-Charge

LARGEST AREA RESIDENTIAL REAL ESTATE FIRMS *Ranked by number of full-time, local licensed agents*

Rank	Name Address Phone/Fax/Web site	No. full-time, local licensed agents	No. local offices	Chief managing officer(s)	Relocation	Referral	Post-license training	Finance mortgages	Year founded locally
1	Russell & Jeffcoat Realtors 1022 Calhoun St. Columbia, SC 29201 (803) 779-6000 / (803) 343-2602 www.russellandjeffcoat.com	471	13	Bob Russell, Abb Jeffcoat, Ron Roe	Yes	Yes	Yes	Yes	1965
2	Century 21 Bob Capes Realtors 300 Candi Lane Columbia, SC 29210 (803) 779-4503 / (803) 343-2709 www.century21bobcapes.com	245	8	James W. Derrick Jr.	Yes	Yes	Yes	Yes	1969
3	ERA Wilder Realty 120-A Columbia Ave Chapin, SC 29036 (803)345-6713 / (803) 772-9226 www.erawilderrealty.com	229	8	Eddie Wilder	Yes	Yes	Yes	Yes	1995
4	Coldwell Banker United, Realtors 1411 Gervais St., Suite 300 Columbia, SC 29201 (803) 799-4663 / (803) 733-3693 www.coldwellbankerunited.com	200	6	Thomas W. Camp	Yes	Yes	Yes	Yes	1955
5	Asset Realty Inc. 9367 Two Notch Road Columbia, SC 29223 (803) 865-7193 / (803) 865-7728 www.assetrealtyinc.com	155	3	Jeff Bond	Yes	Yes	Yes	Yes	1996
6	RE/MAX Real Estate Services 1420 Colonial Life Blvd. Columbia, SC 29210 (803) 731-2466 / (803) 731-0602 www.wesellhouses.com	64	2	David Ness	Yes	Yes	Yes	Yes	1990
7	Weichert Realtors-Ray Covington 2507 Devine St. Columbia, SC 29205 (803) 252-8710 / (803) 252-0363 www.weichertcolumbia.com	53	2	Ray Covington	Yes	Yes	Yes	Yes	1981
8	Gary Realty Co. 4949 Two Notch Road Columbia, SC 29204 (803) 691-4626 / (803) 691-4500 www.garyrealtyinc.com	32	1	Charles Gary	Yes	Yes	Yes	No	1989
9	Crossroads Realty 3703 MacGregor Drive Columbia, SC 29206 (803) 738-0078 / (803) 782-1015 www.4sale4percent.com	31	1	Rock Zammiello (Ballentine office)	Yes	Yes	No	No	2000
10	RE/MAX Metro Associates 950 Lake Murray Blvd Columbia, SC 29063 (803) 749-5800 / (803) 749-5810 www.wesellhouses.com	30	1	Danny Glenn	Yes	Yes	Yes	Yes	1991

SOURCES: Information was compiled from mailed questionnaires and interviews with agency representatives.

Compiled by Chaunte McClure

THE ASSET COMPANIES

Serving Columbia With Integrity & Commitment



**RESIDENTIAL & COMMERCIAL
REAL ESTATE SERVICES**



Asset Academy of Real Estate
"Learn More. Earn More"

CDB

CAREER DEVELOPMENT BRANCH
Guiding Careers To Real Estate Success



**ARI / AUCTION
DIVISION**
BANKRUPTCIES, FORECLOSURERS,
ESTATES & LIQUIDATIONS

"We're Everywhere You Want To Be!"

j75630-06

LARGEST AREA SHOPPING CENTERS *Ranked by gross leasable square feet*

Rank	Name Address Web site	Gross leasable square ft.	Square feet available (1)	Parking spaces	Leasing co. Phone	Year opened/ renovated	Anchor tenants
1	Columbia Place 7201 Two Notch Road Columbia, SC 29223 www.shopcolumbiamall.com	1,307,280	43,682	6,149	CBL and Associates Properties (423) 553-8702	1977 2002	Dillard's, Sears, Macy's, JC Penney
2	Columbiana Centre 100 Columbiana Circle Columbia, SC 29212 www.columbianacentre.com	926,441	5,000	4,200	General Growth Enterprises (312) 960-5000	1990 1996	Belk, Dillard's, Parisian, Sears
3	Richland Mall Forest Drive at Beltline Blvd. Columbia, SC 29204 www.shoprichlandmall.com	863,741	58,000	3,770	Faison (704) 972-2500	1988 1999	Belk, Blacklion, Barnes & Noble, Parisian, The Dept. Store
4	Dutch Square Center 800 Bush River Road Columbia, SC 29210 www.dutchsquare.com	600,000	25,000	3,100	Phillips Edison & Co. (513) 554-1110	1970 1997	Belk, AMC cinema, Burlington Coat Factory
5	East Forest Shopping Center 5420 Forest Drive Columbia, SC 29206	381,810	7,000	1,790	Colliers Keenan (803) 254-2300	1995	Wal-Mart Supercenter, Sam's Club, Hobby Lobby, A.J. Wright
6	Sumter Mall 1057 Broad St. Sumter, SC 29150 www.shopsumtermall.com	345,000	51,136	2,150	Hull/Storey Retail Group (800) 452-4094	1980 2001-02	Belk, JC Penney, Sears
7	Sparkleberry Square Two Notch Road and Sparkleberry Lane Columbia, SC 29229	320,971	3,770	1,962	Equity One (770) 818-1334	1997 2002-03	Kohl's, Kroger, Circuit City
8	Northpointe Commons 10060 Two Notch Road Columbia, SC 29223	313,607	1,527	1,506	Rivercrest Realty (919) 846-4046	2001	Wal-Mart Supercenter, Goody's, Office Depot
9	Harbison Court Harbison Boulevard Columbia, SC 29212	312,178	18,140	1,500	Developers Diversified Realty (704) 552-3738	1992 1994	Barnes & Noble, Marshall's, OfficeMax, Babies 'R Us
10	Columbiana Station III I-26 & Harbison Boulevard Columbia, SC 29212	270,412	47,738	860	CB Richard Ellis (803) 779-7777	2000	Columbiana Grande

SOURCE: Interviews with leasing agents and shopping center representatives.

Compiled by Tanya Fogg Young

NOTES: (1) Square feet available as of June 2005.
Square footage for Columbia Place includes the internal mall only, not the outparcels

VACATION TIME!

CALL 771-8380 OR 1-800-888-3566

FOR MORE INFORMATION ON HOW TO DONATE YOUR PAPERS TO NIE



AREA'S LARGEST UNITED WAY BENEFICIARIES *Ranked by current allocation*

Rank	Name Address Phone/Fax/Web site	Allocation	2004 Budget	Purpose	Executive director
1	American Red Cross 2751 Bull St., Columbia, SC 29201 (803) 540-1241 / (803) 540-1235 www.redcross.org/sc/central	\$517,816	\$1,853,000	To provide relief to victims of disaster and help people prevent, prepare for and respond to emergencies.	Scott R. Salemme
2	Family Service Center of S.C. 1800 Main St., Columbia, SC 29202 (803) 733-5450 / (803) 929-6699 www.fsconline.org	\$449,496	\$12,914,106	To serve S.C. communities, families and individuals by helping them reach their full potential	Don Simmons
3	Boys and Girls Clubs 2016 Sumter St., Columbia, SC 29201 (803) 252-9578 / (803) 252-9413 www.bgca.org	\$242,724	\$824,440	To inspire and enable young people, especially from disadvantaged circumstances, to realize their full potential.	Carter Clark
4	Boy Scouts of America-Indian Waters Council 715 Betsy Drive, Columbia, SC 29210 (803) 750-9868 / (803) 750-9855 www.iwc-bsa.com	\$205,368	\$1,806,444	To serve others by helping to instill values in young people and in other ways to prepare them to make ethical choices over their lifetimes.	Michael R. Miller
5	The Salvation Army 2025 Main St., Columbia, SC 29202 (803) 765-0260 / (803) 254-6465 www.doingthemostgood.org	\$173,433	\$3,539,678	Seeks to meet the physical, emotional and spiritual needs of those who are at risk with commitment, empowering people through the gospel of Jesus Christ.	Capt. Ethan Frizzell
6	YWCA of the Midlands 1735 Devonshire Drive, Columbia, SC 29204 (803) 252-2151 / (803) 252-2577 www.ywcaofthemidlands.org	\$159,095	\$517,979	A membership organization dedicated to creating social change by empowering women and girls, and eliminating racism through programs for children, teens and professional development for women.	Wendi Nance
7	Prevent Child Abuse S.C. 1712 Hampton St., Columbia, SC 29201 (803) 733-5430 / (803) 744-4020 www.pcasc.org	\$124,035	\$1,370,033	To prevent the abuse and neglect of children in South Carolina	Gloria Morris
8	Family Shelter 2411 Two Notch Road, Columbia, SC 29202 (803) 254-8344 / (803) 771-7075 www.columbiafamilyshelter.org	\$119,040	\$287,428	Provides emergency food, shelter and services to homeless children and their families.	Helena Beyersdorf-Cottle
9	American Cancer Society 128 Stonemark Lane, Columbia, SC 29210 (803) 750-1693 / (803) 750-4000 www.cancer.org	\$117,433	\$742,950	Nationwide volunteer health organization dedicated to eliminating cancer through research and education.	Lisa Hartzog
10	Senior Resources 2817 Millwood Ave., Columbia, SC 29205 (803) 252-7734 / (803) 929-0349 www.seniorresourcesinc.org	\$113,639	\$3,925,510	To provide services, resources and personal choices to promote healthy, independent living through the support of staff and volunteers.	Deborah L. Bower

NOTES: Budget was incomplete for the Family Service Center of S.C. Budget number is statewide for American Cancer Society.
SOURCE: United Way of the Midlands, June 2005.

Compiled by Noelle Phillips



**A LEGEND IN HIS OWN
MIND NEIL WHITE**

Talk
About
Town
The State