



 A look at marine life
Ein Blick auf das Leben im Meer

OCEANS

Ein film von

JACQUES PERRIN und JACQUES CLUZAUD

GALATÉE
FILMS




CENSUS
OF MARINE LIFE



A look at marine life

Ein Blick auf das Leben im Meer

OCEANS

Ein film von

JACQUES PERRIN UND JACQUES CLUZAUD

Table of contents

Inhalt

Map of filming locations	2	Karte der Drehorte
Mammals	6	Säugetiere
Birds	12	Vögel
Reptiles	16	Kriechtiere
Cartilaginous fishes	18	Knorpelfische
Bony fishes	22	Knochenfische
Molluscs	28	Weichtiere
Arthropods	30	Gliederfüßler
Jellyfishes	32	Medusen
Echinoderms	32	Stachelhäuter
Tools and cameras	34	Kameras und andere Geräte
Table of filmed species	38	Tabelle der gefilmten Arten _____

“ Since **The Monkey Folk** in 1989, Galatée Films has forged strong ties with the scientific community. With **Winged Migration** in 2001, and then with **ΩCEANS**, the synergy between scientific and cinematographic approaches was magical. Exchanges with researchers from the **Census of Marine Life** programme have widely enhanced our marine world perception, the sensibility of our approach, and, overall, our knowledge of marine creatures. We shot more than 500 hours of footage, which will enable scientists to study, as if they were right there, animal dynamics in their wild environment. ”

“ Scientific discourse, with its technical jargon, is not enchanting. That is why the film **ΩCEANS** is so precious: it can arouse enthusiasm by bringing to light, and with extreme accuracy, what only very few scientists can otherwise perceive. Marine ecology must succeed both as an applied science and like astronomy as a source of wonder and humility. I firmly support an alliance between art and science. **ΩCEANS** give us the best opportunity. ”

“ Seit dem Film **Das Volk der Affen** (1989) hat Galatée Films enge Kontakte zur Wissenschaft aufgebaut. Bei **Nomaden der Lüfte** (2001), und jetzt bei **ΩCEANS**, gab es eine magische gegenseitige Inspiration von Wissenschaftlern und Cinematographen. Wir haben uns durch Gedankenaustausch mit Forschern des **Census of Marine Life** dem Meer und seiner Kreatur mit geschärften Sinnen genähert. Wir haben mehr als 500 Stunden Filmmaterial gedreht, mit dessen Hilfe Wissenschaftler die Dynamik der Tiere studieren können, als wären sie mitten unter ihnen in der Wildnis. ”

Jacques Perrin and Jacques Cluzaud

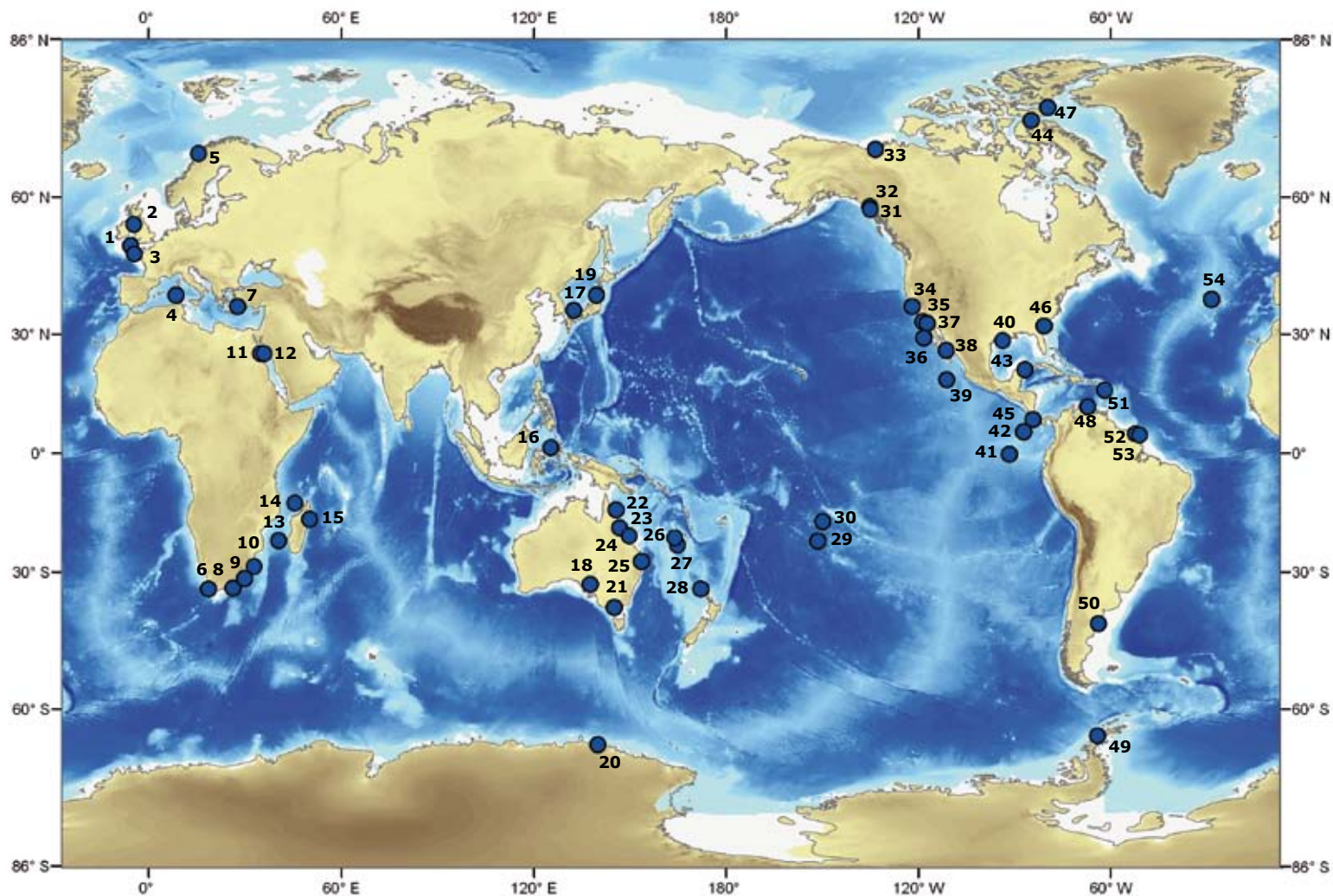
“ Einer wissenschaftlichen Diskussion mit ihrem Fachjargon wohnt kein Zauber inne. Deshalb ist der Film **ΩCEANS** so kostbar: er kann Begeisterung wecken, indem er mit großer Genauigkeit etwas ans Licht bringt, was selbst die meisten Wissenschaftler sonst nie zu sehen bekommen. Marine Ökologie muss sich weiterentwickeln als angewandte Wissenschaft, aber auch, wie die Astronomie, als eine Quelle des Staunens und der Demut. Die Verbindung von Kunst und Wissenschaft hat meine volle Unterstützung. **ΩCEANS** wird uns die beste Gelegenheit dazu geben. ”

Jesse Ausubel

- ▶ 1 Cornwall **Great Britain**----- 050°05'N - 005°41'W
- ▶ 2 Man Isl. **Great Britain** ----- 054°09'N - 004°26'W
- ▶ 3 Brest **France** ----- 048°22'N - 004°29'W
- ▶ 4 San Pietro Isl. **Sardinia**----- 039°11'N - 008°17'E
- ▶ 5 Lofoten Isl. **Norway** ----- 068°24'N - 016°00'E
- ▶ 6 False bay **South Africa** ----- 034°09'S - 018°27'E
- ▶ 7 Kos Isl. **Greece** ----- 036°33'N - 026°02'E
- ▶ 8 Port Elizabeth **South Africa**-- 031°35'S - 027°27'E
- ▶ 9 Port St Johns **South Africa** -- 031°35'S - 029°40'E
- ▶ 10 Aliwall Shoal **South Africa**--- 030°15'S - 030°49'E
- ▶ 11 Märza Alam **Egypt** ----- 025°20'N - 034°44 E
- ▶ 12 Dolphin Reef **Egypt** ----- 025°04'N - 034°56'E
- ▶ 13 Europa Isl. **Mozambique Canal**- 022°19'S - 040°20'E
- ▶ 14 Mayotte **Comoro Isl.** ----- 012°51'S - 045°00'E
- ▶ 15 Sainte Marie Isl. **Madagascar**- 016°56'S - 050°01'E
- ▶ 16 Lembeh Strait **Indonesia** --- 001°28'N - 125°14'E
- ▶ 17 Shimane **Japan** ----- 035°38'N - 132°27'E
- ▶ 18 Whyalla **Australia** ----- 033°02'S - 137°36'E
- ▶ 19 Sado Isl. **Japan** ----- 039°11'N - 139°32'E
- ▶ 20 Terre Adélie **Antarctic** ----- 066°40'S - 140°00'E
- ▶ 21 Melbourne **Australia** ----- 038°29'S - 145°02'E
- ▶ 22 Great Barrier Reef **Australia**- 014°40'S - 145°40'E
- ▶ 23 Townsville **Australia** ----- 019°14'S - 146°49'E
- ▶ 24 Yongala Wreck **Australia** ----- 019°18'S - 147°37'E
- ▶ 25 Stradbroke Isl. **Australia** ---- 027°26'S - 153°32'E
- ▶ 26 Hienghène **New Caledonia** - 020°35'S - 165°08'E
- ▶ 27 Noumea **New Caledonia** --- 022°19'S - 166°13'E
- ▶ 28 Three Kings Isl **New Zealand** 034°08'S - 172°07'E
- ▶ 29 Rurutu **French Polynesia** --- 022°25'S - 151°20'W
- ▶ 30 Moorea Isl. **French Polynesia**- 017°28'S - 149°49'W
- ▶ 31 Chatham Strait **Alaska** ----- 058°06'N - 135°09'W
- ▶ 32 Port Banks **Alaska** ----- 056°34'N - 135°00'W
- ▶ 33 Inuvik **Arctic** ----- 068°50'N - 133°21'W
- ▶ 34 Monterey Bay **California** ---- 036°33'N - 121°56'W
- ▶ 35 San Clemente **California** ---- 033°03'N - 118°36'W
- ▶ 36 Guadalupe Isl. **Mexico** ----- 029°08'N - 118°17'W
- ▶ 37 Coronado Canyon **California** - 032°35'N - 117°20'W
- ▶ 38 Loreto **Sea of Cortez** ----- 026°04'N - 111°16'W
- ▶ 39 Socorro Isl. **Mexico** ----- 018°46'N - 111°03'W
- ▶ 40 Flower Garden Bank **USA** ---- 028°14'N - 093°17'W
- ▶ 41 Fernandina Isl. **Galapagos** -- 000°18'S - 091°39'W
- ▶ 42 Coco Isl. **Costa Rica** ----- 005°30'N - 087°05'W
- ▶ 43 Harrowhead Bank **Mexico** --- 021°16'N - 086°45'W
- ▶ 44 Navy Board Inlet **Arctic** ---- 073°44'N - 084°49'W
- ▶ 45 Drake Bay **Costa Rica** ----- 008°37'N - 084°11'W
- ▶ 46 Savannah **USA** ----- 031°59'N - 080°51'W
- ▶ 47 Coburg Isl. **Arctic** ----- 075°51'N - 079°34'W
- ▶ 48 Los Roques **Venezuela** ----- 011°54'N - 067°04'W
- ▶ 49 Pleneau Isl. **Antarctic** ----- 065°06'S - 064°04'W
- ▶ 50 Valdes Peninsula **Argentina** -- 042°06'S - 063°46'W
- ▶ 51 La Guadeloupe Isl. **France** -- 016°07'N - 061°48'W
- ▶ 52 Cayenne **French Guyana** --- 004°53'N - 052°15'W
- ▶ 53 Grand Connetable **Guyana**--- 004°49'N - 051°56'W
- ▶ 54 Azores Isl. **Portugal** ----- 038°26'N - 028°33'W

Drehorte, numeriert von West nach Ost

Filming locations, numbered from West to East



- ▶ In the following pages, the filming location number is reported on each species caption.
- ▶ Auf den folgenden Seiten ist die Drehortnummer bei jeder Bildunterschrift vermerkt.

An illustrated inventory of **ΩCEANS** film main species Ein Inventar der Arten im **ΩCEANS** Film

The film **ΩCEANS** offers a dynamic view of marine biodiversity. Its approach is both aesthetic and scientific.

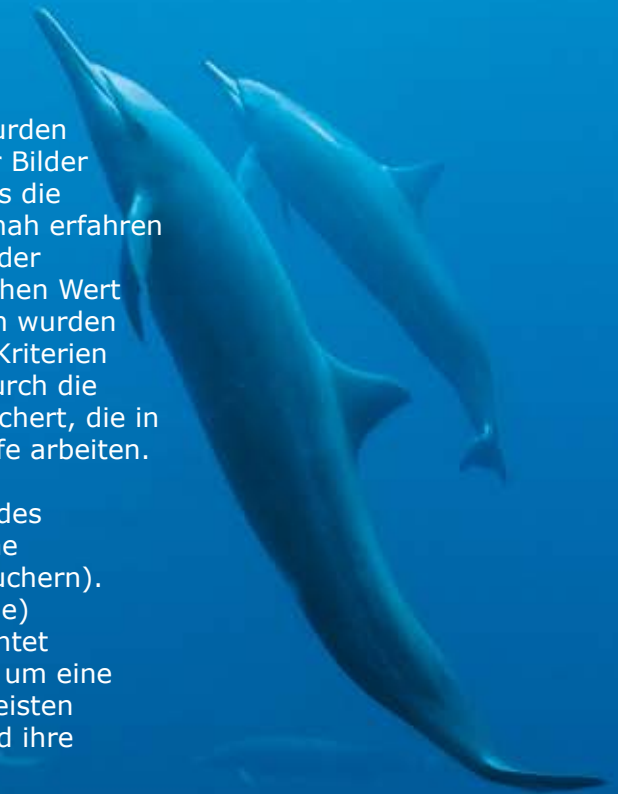
The emotional impact of the images of **ΩCEANS** has been the determining factor in choosing the sequences that were filmed - the idea being that the spectators should get a real feel for marine life, while respecting the authenticity of the events and their scientific value. Biological and technical criteria determined the choice of locations and species. The work benefited from the experience of the scientists working in the Census of Marine Life programme.

The film **ΩCEANS** displays the diversity of the fauna that is found in the euphotic zone (depths of up to 50 metres accessible to autonomous divers). Priority was given to pelagic species (those living in the open sea) that are observable in clear waters so as to guarantee the quality of cinematographic images, to be able to observe how species behave and to show how they move in the water.

Der Film **ΩCEANS** vermittelt eine dynamische Sichtweise der marinen Biodiversität. Seine Herangehensweise ist sowohl ästhetisch als auch wissenschaftlich.

Die Filmsequenzen von **ΩCEANS** wurden nach der emotionalen Wirkung ihrer Bilder ausgesucht, mit der Grundidee, dass die Zuschauer das Leben im Meer hautnah erfahren können und dabei die Authentizität der Ereignisse und ihren wissenschaftlichen Wert respektieren. Schauplätze und Arten wurden nach biologischen und technischen Kriterien ausgewählt. Unsere Arbeit wurde durch die Erfahrung der Wissenschaftler bereichert, die in dem Programm Census of Marine Life arbeiten.

Der Film **ΩCEANS** zeigt die Vielfalt des Lebens in der lichtdurchfluteten Zone (Tiefen bis 50 m, erreichbar von Tauchern). Pelagische (im freien Wasser lebende) Arten, die in klarem Wasser beobachtet werden können, wurden bevorzugt, um eine hohe Qualität der Bilder zu gewährleisten und um das Verhalten von Arten und ihre Bewegung im Wasser zu zeigen.



Scientists' and divers' knowledge about behavioural patterns and spatio-temporal distribution guided us in the choice of more than 50 filming locations across the oceans all over the world, from the Arctic to the Antarctic. About 200 species were filmed, 80 of them appear in the film **OCEANS**. These species were filmed in preserved zones, protected marine areas or areas distant from any human activity. 75 expeditions conducted during four years give a view of the distribution, the amazing profusion and diversity of marine life, when not threatened by uncontrolled exploitation.

By using new cinematographic techniques that enable one to film underwater fauna close up and to capture fleeting moments in their dynamic behaviour, it has been possible to obtain sequences that have never before been seen, and which are original both from a scientific point of view and in terms of their emotional impact.

The scientific information gathered for this brochure has been checked, and respects the zoological nomenclature of species, while also indicating their vernacular names. Dates of filming are indicated and locations are mapped. When appropriate, attention is drawn to rare and interesting behaviour.

Das Wissen von Wissenschaftlern und Tauchern über Verhaltensmuster und Verbreitung in Raum und Zeit leitete uns in der Auswahl von mehr als 50 Drehorten in allen Ozeanen, von der Arktis zur Antarktis. Etwa 200 Arten wurden gefilmt, 80 davon erscheinen in dem Film **OCEANS**. Diese Arten wurden in Reservaten und geschützten Zonen weit weg von menschlichen Einflüssen gefilmt. 75 Expeditionen, durchgeführt in vier Jahren, vermitteln einen Eindruck der Verbreitung, der erstaunlichen Fülle und Vielfalt des Lebens im Meer, wo es nicht durch unkontrolliertes Ausbeuten durch den Menschen bedroht ist.

Durch das Anwenden neuer cinematographischer Techniken, die Nahaufnahmen der Unterwasser-Tierwelt und das Einfangen flüchtiger Momente in ihrem dynamischen Verhalten ermöglichen, sind uns nie vorher gesehene Aufnahmen gelungen, die sowohl vom wissenschaftlichen Standpunkt als auch von ihrer emotionalen Wirkung einzigartig sind.

Die wissenschaftliche Information für die se Broschüre ist überprüft worden und berücksichtigt die zoologische Nomenklatur der Arten, schließt aber auch ihre allgemeinverständlichen Namen ein. Drehtermine sind aufgeführt und die Drehorte kartiert. Auf seltene und interessante Verhaltensweisen wird hingewiesen.

A collaboration between Galatee Films and Census of Marine Life
Ein gemeinsames Projekt von Galatée Films und Census of Marine Life



Mammalia

Mammals Säugetiere



37 ▶

2006. 2007 July Juli

32°35'N - 117°20'W

Coronado Canyon **California**

Cetartiodactyla Balaenopteridae

Balaenoptera musculus (Linnaeus, 1758)

Blue whale Blauwal

Feeding on krill Fressen von Krill



◀ 31

2008 July Juli

58°06'N - 135°09'W
Chatham Strait **Alaska**

Cetartiodactyla Balaenopteridae
Megaptera novaeangliae
(Borowski, 1781)
Humpback whale
Buckelwal
Feeding on herrings
Fressen von Heringen



15 ▶

2008 August August

16°56'S - 50°01'E
Ste Marie Isl. **Madagascar**

Cetartiodactyla Balaenopteridae
Megaptera novaeangliae
(Borowski, 1781)
Humpback whale Buckelwal
Play, breaching Spiel, Auftauchen



◀ 8

2006 June Juni

33°56'S - 26°02'E
Port Elisabeth **South Africa**

Cetartiodactyla Balaenopteridae
Balaenoptera edeni Anderson, 1878
Bryde's whale Edenwal
Feeding on sardines
Fressen von Sardinen



2005 October Oktober

22°25'S - 151°20'W
Rurutu **French Polynesia**

Cetartiodactyla Balaenopteridae
Megaptera novaeangliae (Borowski, 1781)
Humpback whale Buckelwal
Mother and calf Mutter und Kalb

29 ▶



38 ▲ 2007 March März

26°04'N - 111°16' W
Loreto **Sea of Cortez**

Cetartiodactyla Balaenopteridae
Balaenoptera musculus
(Linnaeus, 1758)
Blue whale Blauwal
Mother and calf
Mutter und Kalb



◀ 44

2007 June Juni
73°44'N - 84°49'W
Navy Board Inlet **Arctic**
Cetartiodactyla Monodontidae
Monodon monoceros Linnaeus, 1758
Narwhal Narwal



◀ 33

2007 June Juni
68°50'N - 133°21'W
Inuvik **Arctic**
Cetartiodactyla Monodontidae
Delphinapterus leucas (Pallas, 1776)
Beluga Beluga
Trapped in a polynia
Eingeschlossen in Polynya



◀ 54

2008 September September
38°14'N - 28°25'W
Azores isl. **Portugal**
Cetartiodactyla Delphinidae
Delphinus delphis Linnaeus, 1758
Common dolphin *Gewöhnlicher Delfin*
Fast swimming *Schnelles Schwimmen*



25 ▲

2008 July Juli

27°26'S - 153°32'E
Stradbroke Isl. **Australia**

Cetartiodactyla Delphinidae
Tursiops truncatus (Montagu, 1821)
Bottlenose dolphin *Großer Tümmler*
Surfing *Wellenreiten*



◀ 51

2008 March März
16°07'N - 61°48'W
La Guadeloupe Isl. **France**
Cetartiodactyla Physeteridae
Physeter macrocephalus Linnaeus, 1758
Sperm whale *Pottwal*
Mother and calf *Mutter und Kalb*



◀ 50

2008 April April
 42°06'S - 63°46'W
 Valdes Peninsula **Argentina**
 Cetartiodactyla Delphinidae
Orcinus orca (Linnaeus, 1758)
 Killer whale **Schwertwal**
 Predation on sea lion
 Erbeutung eines Seelöwen



◀ 12

2006 May mai
 25°04'N - 34°56'E
 Dolphin Reef **Egypt**
 Cetartiodactyla Delphinidae
Stenella longirostris (Gray, 1828)
 Spinner dolphin
 Ostpazifischer Delfin
 Mating, play Paarung, Spielen



◀ 45

2008 April April
 8°37'N - 84°11'W
 Drake Bay **Costa Rica**
 Cetartiodactyla Delphinidae
Stenella longirostris centroamericana
 (Gray, 1828)
 Spinner dolphin
 Ostpazifischer Delfin
 Predation, spinning, fast swimming
 Jagen, Drehen, schnelles Schwimmen



◀ 9

2005 July Juli
 31°35'S - 29°40'E
 Port St Johns **South Africa**
 Cetartiodactyla Delphinidae
Delphinus capensis Gray, 1828
 Long beaked common dolphin
 Langschnäuziger Gemeiner Delfin
 Predation on sardines
 Erbeuten von Sardinen



28 ▲

2008 May mai
 34°08'S - 172°07'E
 Three Kings Isl. **New Zealand**
 Cetartiodactyla Delphinidae
Orcinus orca (Linnaeus, 1758)
 Killer whale **Schwertwal**



◀ 41

2008 March März

0°18'S - 91°39'W

Fernandina Isl. **Galapagos**

Carnivora Otariidae

Zalophus californianus (Lesson, 1828)

Californian sea lion Kalifornischer Seelöwe

Play, mother and calf Spiel, Mutter und Kalb



35 ▶

2006 November November

33°03'N - 118°36'W

San Clemente Isl. **California**

Carnivora Otariidae

Zalophus californianus (Lesson, 1828)

Californian sea lion

Kalifornischer Seelöwe

Play in group

Spielen in der Gruppe



◀ 46

2007 August August

34°09'S - 18°27'E

False Bay **South Africa**

Carnivora Otariidae

Arctocephalus pusillus (Schreber, 1776)

South African fur seal

Südafrikanische Pelzrobbe

Fast swimming at the surface

Schnelles Schwimmen an der Oberfläche

50 ▶

2008 April April

42°06'S - 63°46'W

Valdes Peninsula **Argentina**

Carnivora Otariidae

Otaria flavescens Shaw, 1800

South American sea lion

Südamerikanischer Seelöwe

Mother and pup Mutter und Welp



◀ 41

2008 March März

0°18'S - 91°39'W

Fernandina Isl. **Galapagos**

Carnivora Otariidae

Arctocephalus galapagoensis Heller, 1904

Galapagos fur seal Galapagos-Pelzrobbe





◀ 47

2008 June Juni
75°51'N - 79°34'W
Coburg IIs. **Arctic**
Carnivora Odobenidae
Odobenus rosmarus
(Linnaeus, 1758)
Walrus **Walross**
Mother and calf **Mutter und Kalb**



▲ 20

2007 November **November**
66°40'S - 140°00'E
Terre Adélie **Antarctic**
Carnivora Phocidae
Leptonychotes weddellii (Lesson, 1826)
Weddell seal **Weddellrobbe**
Mother and calf **Mutter und Kalb**



◀ 49

2008 February **février**
65°06'S - 64°04'W
Pleneau IIs. **Antarctic**
Carnivora Phocidae
Hydrurga leptonyx (Blainville, 1820)
Leopard seal **Seeleopard**
Predation on gentoo penguin
Erbeuten eines Eselspinguins

▼ 47

2008 June Juni
75°51'N - 79°34'W
Coburg IIs. **Arctic**
Carnivora Phocidae
Erignathus barbatus
(Erxleben, 1777)
Bearded seal **Bartrobbe**

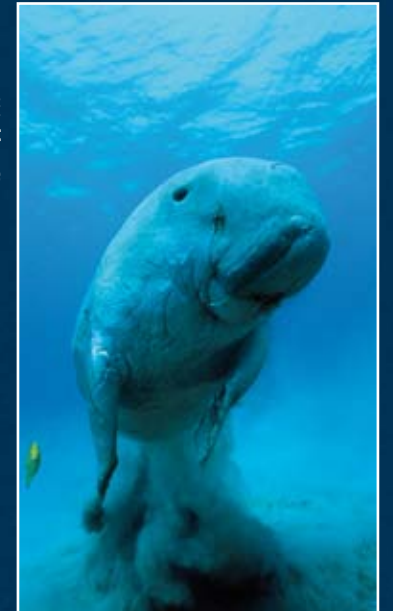
11 ▶

2006 May **mai**
25°20'N - 34°44'E
Märza Alam **Egypt**
Sirenia Dugongidae
Dugong dugon
(Müller, 1776)
Dugong **Dugong**
Grazing **Weiden**



◀ 36

2006 November **November**
29°08'N - 118°17'W
Guadalupe Isl. **Mexico**
Carnivora Phocidae
Mirounga angustirostris Gill, 1866
Northern elephant seal
See-Elefant





f Aves
Birds Vögel



34 ▶

2008 March März

36°33'N - 121°56'W
Monterey Bay **California**

Pelecaniformes Pelecanidae
Pelecanus occidentalis
Linnaeus, 1766
Brown pelican **Brauner Pelikan**



13 ▲

2008 April April

22°19'S 40°20'E
Europa Isl. **Mozambique canal**

Pelecaniformes Fregatidae
Fregata minor (Gmelin, 1789)
Great frigatebird **Großer Fregattvogel**
Predation on small green turtles
Erbeuten von Grünen Seeschildkröten

41 ▶

2008 March März

0°18'S - 91°39'W
Fernandina Isl. **Galapagos**

Pelecaniformes Phalacrocoracidae
Phalacrocorax harrisi Rothschild, 1898
Flightless cormorant **Galapagosscharbe**
Swimming and hunting **Schwimmen und Jagen**





◀ 20

2007 November **November**

66°40'S - 140°00'E

Terre Adélie **Antarctic**

Sphenisciformes Spheniscidae

Pygoscelis adeliae (Hombron & Jacquinot, 1841)

Adelie penguin **Adeliepinguin**

Swimming under the iceshelf

Schwimmen unter dem Schelfeis

8 ▶

2006 June **Juni**

33°56'S - 26°02'E

Port Elizabeth **South Africa**

Pelecaniformes Sulidae

Sula capensis (Lichtenstein, 1823)

Cape gannet **Kaptölpel**

Predation on sardines

Erbeuten von Sardinen



20 ▶

2007 November **November**

66°40'S - 140°00'E
Terre Adélie **Antarctic**

Sphenisciformes Spheniscidae
Aptenodytes forsteri Gray, 1844
Emperor penguin **Kaiserpinguin**
Swimming under the iceshelf
Schwimmen unter dem Schelfeis



9 ▼

2005 July **Juli**

31°35'S 29°40'E
Port St Johns **South Africa**

Pelecaniformes Sulidae
Sula capensis (Lichtenstein, 1823)
Cape gannet **Kaptölpel**
Predation on sardines **Erbeuten von Sardinen**



9 ▼

2008 September **September**

38°26'N 28°33'W
Azores Isl. **Portugal**

Procellariiformes Procellariidae
Calonectris diomedea (Scopoli, 1769)
Shearwater **Sturmtaucher**
Predation on horse mackerels
Erbeuten von Bastardmakrelen



R reptilia

Reptiles Kriechtiere





◀ 41

2008 March März

00°18'S - 91°39'W

Fernandina Isl. **Galapagos**

Sauria Iguanidae

Amblyrhynchus cristatus Bell, 1825

Marine iguana **Meerechse**

Grazing **Weiden**



◀ 11

2006 May mai

25°20'N - 34°44'E

Märza Alam **Egypt**

Testudines Cheloniidae

Chelonia mydas (Linnaeus, 1758)

Green turtle **Grüne Seeschildkröte**

Grazing **Weiden**



▶ 52

2008 May mai

04°53'N - 52°15'W

Cayenne **French Guyana**

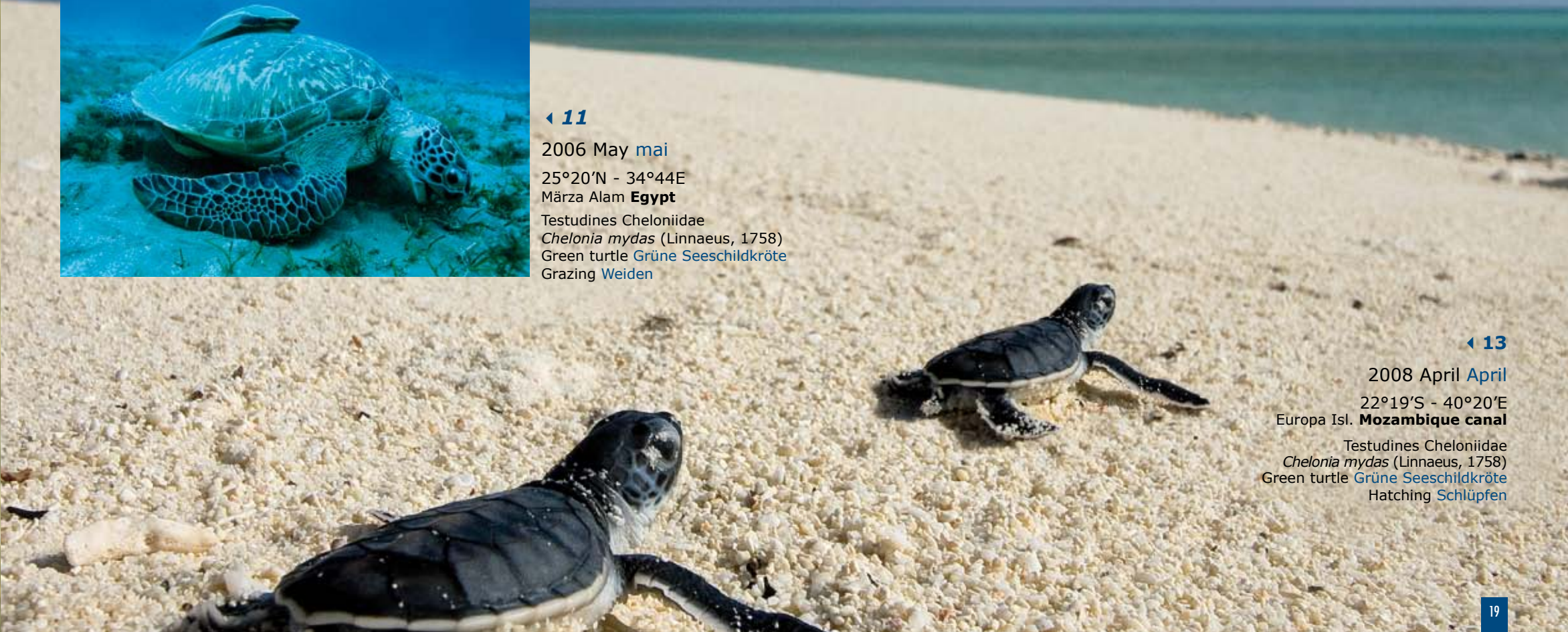
Testudines Dermochelyidae

Dermochelys coriacea

(Vandelli, 1761)

Leatherback turtle

Lederschildkröte



◀ 13

2008 April April

22°19'S - 40°20'E

Europa Isl. **Mozambique canal**

Testudines Cheloniidae

Chelonia mydas (Linnaeus, 1758)

Green turtle **Grüne Seeschildkröte**

Hatching **Schlüpfen**

Elasmobranchii

Cartilaginous fishes Knorpelfische





◀ 45

2008 April April

8°37'N - 84°11'W

Drake Bay **Costa Rica**

Rajiformes Myliobatidae

Mobula tarapacana (Philippi, 1892)

Lesser devil ray **Kleiner Teufelsrochen**

Predation on lanternfishes

Erbeuten von Laternenfischen



◀ 39

2008 May mai

18°46'N - 111°03'W

Socorro Isl. **Mexico**

Rajiformes Myliobatidae

Manta birostris (Walbaum, 1792)

Giant manta **Riesenmanta**

Feeding on plankton

Fressen von Plankton



◀ 42

2006 April April

5°30'N - 87°05'W

Coco Isl. **Costa Rica**

Rajiformes Dasyatidae

Taeniura meyeni Müller & Henle, 1841

Blotched fantail ray **Schwarzpunkt-Stechrochen**



41 ▶

2008 March März

0°18'S - 91°39'W

Fernandina Isl. **Galapagos**

Rajiformes Myliobatidae

Rhinoptera bonasus (Mitchill, 1815)

Cownose ray **Kuhkopfrochen**





◀ 36

2006 November **November**

29°08'N - 118°17'W
Guadalupe Isl. **Mexico**

Lamniformes Lamnidae
Carcharodon carcharias (Linnaeus, 1758)
Great white shark **Weißer Hai**
Behaviour with diver
Verhalten mit Taucher



◀ 9

2005 May **mai**

31°35'S - 29°40'E
Port St Johns **South Africa**

Carcharhiniformes Carcharhinidae
Carcharhinus brachyurus
(Günther, 1870)
Copper shark **Bronzehai**
Predation on sardines
Erbeuten von Sardinen



◀ 6

2007 August **August**

34°09'S - 18°27'E
False Bay **South Africa**

Lamniformes Lamnidae
Carcharodon carcharias (Linnaeus, 1758)
Great white shark **Weißer Hai**
Predation on South African fur seal
Erbeuten von südafrikanischer Pelzrobbe



◀ 1

2008 August **August**

50°05'N - 5°41'W
Great Britain

Lamniformes Cetorhinidae
Cetorhinus maximus (Gunnerus, 1765)
Basking shark **Riesenhai**
Feeding on plankton
Fressen von Plankton



◀ 37

2006. 2007 July Juli
32°35' N - 117°20' W
Coronado Canyon **California**
Carcharhiniformes Carcharhinidae
Prionace glauca (Linnaeus, 1758)
Blue shark Blauhais
Hunting around kelp paddy
Jagen unter schwimmendem Tang



◀ 48

2008 January janvier
11°54'N - 67°04'W
Los Roques **Venezuela**
Orectolobiformes Rhincodontidae
Rhincodon typus Smith, 1828
Whale shark Walhais
Association with sardines
In Gesellschaft mit Sardinen



◀ 42

2006 April April
5°30'N - 87°05'W
Coco Isl. **Costa Rica**
Carcharhiniformes Sphyrnidae
Sphyrna lewini (Griffith & Smith, 1834)
Scalloped hammerhead shark
Bogenstirn-Hammerhai
Cleaned by butterfly fish
Reinigen durch Schmetterlingsfische



42 ▶

2006 April April
5°30'N - 87°05'W
Coco Isl. **Costa Rica**
Carcharhiniformes Carcharhinidae
Carcharhinus albimarginatus
(Rüppell, 1837)
Silvertip shark
Silberspitzenhais
Association with jacks
In Gesellschaft mit Stachelmakrelen



42 ▶

2006 April April
5°30'N - 87°05'W
Coco Isl. **Costa Rica**
Carcharhiniformes Carcharhinidae
Triaenodon obesus (Rüppell, 1837)
Whitetip reefshark
Weißspitzen-Riffhais
Association with rainbow runner
In Gesellschaft mit Regenbogenmakrelen



Holocephali

21 ▶

2008 April April
38°29'S - 145°02'E
Melbourne **Australia**
Chimaeriformes Callorhynchidae
Callorhynchus milii
Bory de Saint-Vincent, 1823
Elephant fish Pflugnasenchimäre

Actinopterygii

Bony fishes Knochenfische



54 ▶

2008 September September

38°26'N - 28°33'W
Azores Isl. **Portugal**



43 ▼

2007 February février

21°16'N - 86°45'W
Harrowhead Bank **Mexico**

Perciformes Istiophoridae
Istiophorus platypterus
(Shaw, 1792)
Sailfish Indopazifischer Fächerfisch
Predation on sardines
Erbeuten von Sardinen

Perciformes Carangidae
Trachurus trachurus
(Linnaeus, 1758)
Horse mackerel Bastardmakrele
School behaviour Verhalten der Schule



4 ▶

2008 May mai

39°11'N - 8°17'E
San Pietro Isl. **Sardinia**

Perciformes Xiphiidae
Xiphias gladius Linnaeus, 1758
Swordfish Schwertfisch



45 ▶

2008 April April

8°37'N - 84°11'W
Drake Bay **Costa Rica**

Perciformes Scombridae
Thunnus albacares
(Bonnaterre, 1788)
Yellowfin tuna
Gelbflossen-Tunfisch
Predation and fast swimming
Jagen und schnelles Schwimmen



▲ 54 2008 September September

38°26'N - 28°33'W
Azores Isl. **Portugal**

Perciformes Scombridae
Thunnus alalunga (Bonnaterre, 1788)
Albacore Weißer Tunfisch
Predation on horse mackerels
Erbeuten von Bastardmakrelen



◀ 42

2006 April April

5°30'N - 87°05'W
Coco Isl. **Costa Rica**

Perciformes Carangidae
Caranx sexfasciatus Quoy & Gaimard, 1825
Bigeye trevally Großaugen-Stachelmakrele

7 ▶

2007 June Juni

36°33'N - 27°27'E
Kos Isl. **Greece**

Perciformes Scombridae
Thunnus thynnus
(Linnaeus, 1758)
Northern bluefin tuna Großer Tunfisch





◀ 27

2007 November November

22°19'S - 166°13'W
Noumea **New Caledonia**

Perciformes Pomacentridae
Amphiprion melanopus Bleeker, 1852
Fire clownfish **Schwarzflossen-Anemonenfisch**



◀ 23

2008 May mai

19°14'S - 146°49'E
Townsville **Australia**

Tetraodontiformes Diodontidae
Diodon holocanthus Linnaeus, 1758
Long-spine porcupinefish **Braunflecken-Igelfisch**



◀ 23

2008 May mai

19°14'S - 146°49'E
Townsville **Australia**

Perciformes Labridae
Epibulus insidiator (Pallas, 1770)
Slingjaw wrasse **Stülpmaul-Lippfisch**
Predation on damselfish
Erbeuten von Demoiselle



▲ 37

2006. 2007 July Juli
32°35' - N 117°20'W
Coronado Canyon **California**
Tetraodontiformes Molidae
Mola mola (Linnaeus, 1758)
Ocean sunfish **Mondfisch**



◀ 27

2007 November November

22°19'S - 166°13'W
Noumea **New Caledonia**

Perciforme Acanthuridae
Paracanthurus hepatus
(Linnaeus, 1766)
Palette surgeonfish
Paletten-Doktorfisch
Sleeping Schlafen



◀ 27

2007 November November

22°19'S - 166°13'W
Noumea **New Caledonia**

Perciformes Haemulidae
Plectorhinchus lineatus
(Linnaeus, 1758)
Diagonal-banded sweetlips
Diagonal-Süßlippe
Cleaned by cleaner wrasse
Reinigung durch Putzerfisch



◀ 22

2008 October Oktober

14°40'S - 145°40'E
Great Barrier Reef **Australia**

Perciformes Serranidae
Epinephelus tukula Morgans, 1959
Potato cod
Gefleckter Riesenzackenbarsch
Spawning Laichen, Fortpflanzung



◀ 16

2008 September September

1°28'N - 125°14'E
Lembeh Strait **Indonesia**

Syngnathiformes Centriscidae
Aeoliscus strigatus (Günther, 1861)
Razorfish Rasiermesserfisch



◀ 19

2008 July Juli

39°11'N - 139°32'E
Sado Isl. **Japan**

Perciformes Labridae
Semicossyphus reticulatus
(Valenciennes, 1839)
Asian sheepshead wrasse
Schafskopf-Lippfisch
Fighting between males, spawning
Kämpfende Männchen, Laichen



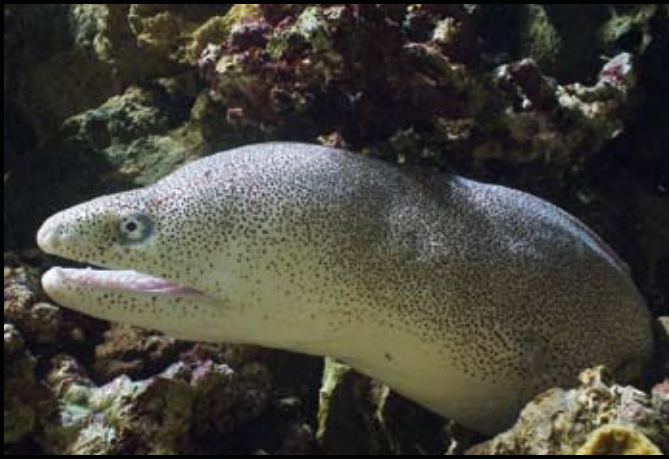
◀ 23

2008 May mai
19°14'S - 146°49'E
Townsville **Australia**
Anguilliformes Muraenidae
Rhinomuraena quaesita
Garman, 1888
Ribbon moray Nasenmuräne



◀ 23

2008 May mai
19°14'S - 146°49'E
Townsville **Australia**
Scorpaeniformes Dactylopteridae
Dactyloptena orientalis (Cuvier, 1829)
Oriental flying gurnard
Orientalischer Flughahn



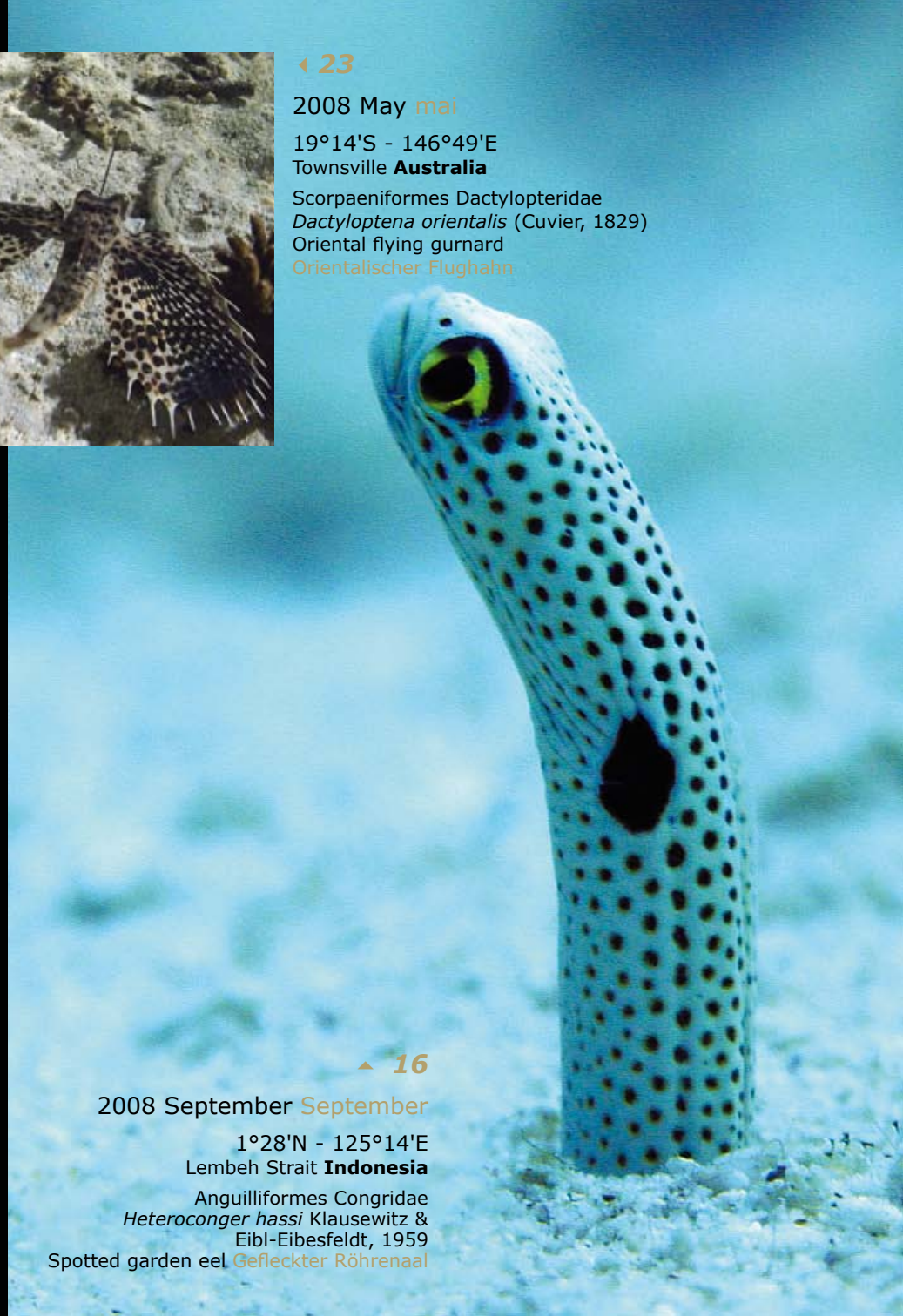
◀ 23

2008 May mai
19°14'S - 146°49'E
Townsville **Australia**
Anguilliformes Muraenidae
Gymnothorax thyrsoideus
(Richardson, 1845)
Greyface moray
Weißaugen-Muräne



◀ 30

2005 September September
17°36'S - 149°49'W
Moorea Isl. **French Polynesia**
Anguilliformes Muraenidae
Gymnothorax javanicus (Bleeker, 1859)
Giant moray Riesenmuräne
Cleaned by cleaner wrasse
Reinigung durch Putzerfisch



▲ 16

2008 September September
1°28'N - 125°14'E
Lembeh Strait **Indonesia**
Anguilliformes Congridae
Heteroconger hassi Klausewitz &
Eibl-Eibesfeldt, 1959
Spotted garden eel Gefleckter Röhrenaal



◀ 23

2008 May mai

19°14'S - 146°49'E

Townsville **Australia**

Scorpaeniformes Scorpaenidae

Pterois volitans (Linnaeus, 1758)

Lionfish Rotfeuerfisch

Predation on damselfish

Erbeuten von Demoiselle



◀ 23

2008 May mai

19°14'S - 146°49'E

Townsville **Australia**

Scorpaeniformes Scorpaenidae

Rhinopias eschmeyeri Condé, 1977

Eschmeyer's scorpionfish

Eschmeyers Skorpionfisch



◀ 23

2008 May mai

19°14'S - 146°49'E

Townsville **Australia**

Lophiiformes Antennariidae

Antennarius Lacépède, 1798

Frogfish Anglerfisch



◀ 23

2008 May mai

19°14'S - 146°49'E

Townsville **Australia**

Scorpaeniformes Synanceiidae

Synanceia verrucosa

Bloch & Schneider, 1801

Reef stonefish Riff-Steinfisch

Predation on damselfish

Erbeuten von Demoiselle



◀ 32

2008 September September

56°34'N - 135°00'W

Port Banks **Alaska**

Salmoniformes Salmonidae

Oncorhynchus nerka

(Walbaum, 1792)

Sockeye salmon Rotlachs

Mollusca

Molluscs Weichtiere





◀ 18

2007 June Juni

33°02'S - 137°36'E

Whyalla **Australia**

Sepiida Sepiidae

Sepia apama Gray, 1849

Australian giant cuttlefish

Riesensepia

Reproduction Fortpflanzung



◀ 16

2008 October Oktober

1°28'N - 125°14'E

Lembah Strait **Indonesia**

Sepiida Sepiidae

Sepia latimanus Quoy & Gaimard, 1832

Broadclub cuttlefish Breitarm-Sepia

Predation on crab

Erbeuten einer Krabbe



17 ▲

2007 October Oktober

35°38'N - 132°27'E

Shimane **Japan**

Octopoda Tremoctopodidae

Tremoctopus violaceus Delle Chiaje, 1830

Blanket octopus Löcherkrake



◀ 23

2008 May mai

19°14'S - 146°49'E

Townsville **Australia**

Nudibranchia Hexabranhidae

Hexabranhus sanguineus

(Rüppell & Leuckart, 1830)

Spanish dancer

Spanische Tänzerin

Arthropoda

Arthropods Gliederfüßler



◀ 21

2008 April April

38°29'S - 145°02'E

Melbourne **Australia**

Decapoda Majidae

Leptomithrax gaimardii Miers, 1876

Spider crab Seespinne

Aggregation for molting *Versammlung zum Häuten*





◀ 23

2008 May mai
 19°14'S - 146°49'E
 Townsville **Australia**
 Decapoda Diogenidae
Dardanus megistos
 (J. W. Herbst, 1804)
 White-spotted hermit crab
 Weißpunkt-Einsiedler



◀ 23

2008 May mai
 19°14'S - 146°49'E
 Townsville **Australia**
 Stomatopoda Squillidae
Odontodactylus scyllarus (Linnaeus, 1758)
 Peacock mantis shrimp
 Clown-Fangschreckenkrebs
 Fighting with crab
 Kampf mit Krabbe

27 ▼

2007 November November

22°19'S - 166°13'W
 Noumea **New Caledonia**

Decapoda Dromiidae
Dromia dormia
 (Linnaeus, 1763)
 Sleepy sponge crab
 Schwammkrabbe



◀ 37

2006 2007 July Juli
 32°35'N - 117°20'W
 Coronado Canyon **California**
 Euphausiacea Euphausiidae
Thysanoessa spinifera
 Holmes, 1900
 Krill Krill



◀ 27

2007 November November
 22°19'S - 166°13'W
 Noumea **New Caledonia**
 Decapoda Palinuridae
Panulirus ornatus (Fabricius, 1798)
 Ornate rock lobster
 Schmuck-Languste



◀ 46

2008 May mai
 31°59'N - 80°51'W
 Savannah **USA**
 Xiphosurida Limulidae
Limulus polyphemus
 (Linnaeus, 1758)
 Horseshoe crab Pfeilschwanzkrebs
 Aggregation for reproduction
 Versammlung zur Fortpflanzung

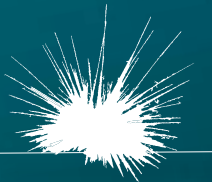
Scyphozoa

Jellyfishes Medusen



Echinodermata

Echinoderms Stachelhäuter





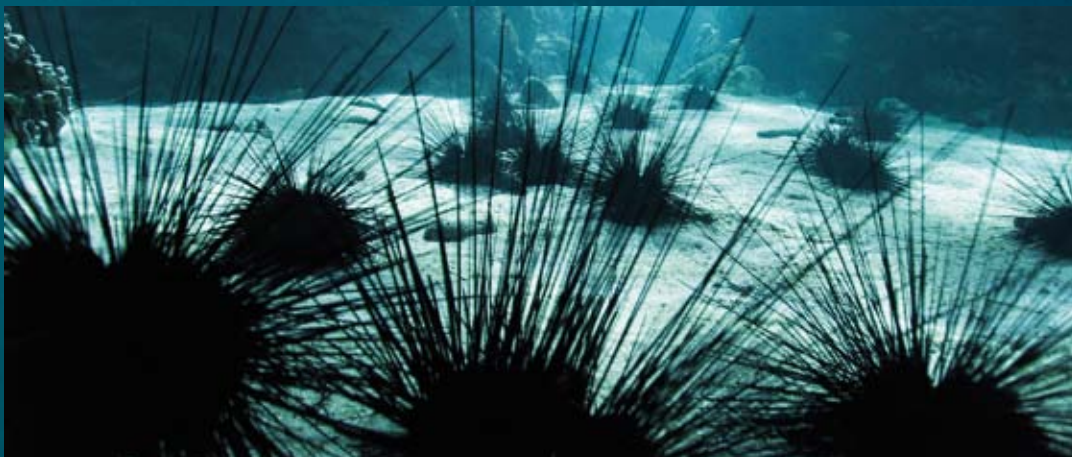
◀ 19

2008 July Juli
39°11'N - 139°32'E
Sado Isl. **Japan**
Semaestomeae Ulmaridae
Aurelia sp.
Moon jelly Ohrenqualle



◀ 34

2007 October Oktober
36°33'N - 121°56'W
Monterey Bay **California**
Semaestomeae Pelagiidae
Chrysaora fuscescens Brandt, 1835
Sea nettle Kompassqualle



◀ 27

2007 November November
22°19'S - 166°13'W
Noumea **New Caledonia**
Echinothuroida Diadematidae
Diadema setosum (Leske, 1778)
Long-spined sea urchin
Diadem-Seeigel

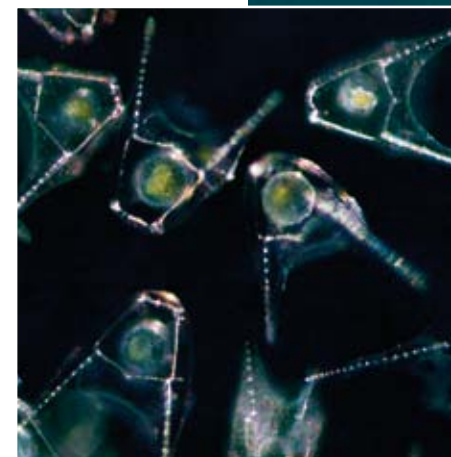


▲ 17 2007 October Oktober

35°38'N - 132°27'E
Shimane **Japan**
Rhizostomeae Rhizostomatidae
Nemopilema nomurai Kishinouye, 1922
Nomura's jellyfish Nomura-Qualle

3 ▶

2009 January janvier
48°22'N - 4°29'W
Brest **France**
Echinoida Echinidae
Paracentrotus lividus Lamarck, 1810
Rock urchin Steinseeigel



Making of

Tools and cameras *Ausrüstung und Kameras*





Mini-helicopter *Birdy* Mini-Hubschrauber *Birdy*

Length *Länge* 1,80 m
Weight *Gewicht* 12 Kg

The radio controlled mini-helicopter is equipped with a silent electric engine that runs autonomously for ten minutes, and enables approaching animals without frightening them. The camera is equipped with a wide angle lens and was modified to fit into the head of the helicopter, stabilized by a gyro.

Der ferngesteuerte Minihubschrauber ist mit einem stillen Elektromotor ausgestattet, der zehn Minuten selbständig läuft und es ermöglicht, sich Tieren zu nähern, ohne sie zu erschrecken. Die Kamera hat ein Weitwinkelobjektiv und wurde modifiziert, um kardanisch aufgehängt in den Hubschrauber zu passen.



Stabilised camera *Thetys* Stabilisierte Kamera *Thetys*

Crane length *Kranlänge* 4,50 m
Head *Kopf* 90 cm
Crane and head weight
Gewicht Kran und Kopf 400 Kg

The Thetys system immediately stabilizes the camera thanks to mathematical algorithms that control its gyro-compass computer program. Attached to a crane, Thetys obtains a high quality film image without vibration and keeps the skyline straight even when the boat goes at high speed in heavy sea.

Dank Algorithmen im Computerprogramm zur Kontrolle der kardanischen Aufhängung kann das Thetys-System die Kamera sofort stabilisieren. Aufgehängt an einem Kran, erstellt Thetys Bilder von hoher Qualität ohne Vibration und hält den Horizont konstant, auch wenn das Boot in schwerer See mit hoher Geschwindigkeit fährt.





Underwater camera Unterwasserkamera

HD Sony 900 camera.
Housing length **Gehäuselänge 60 cm**
Housing width **Gehäusebreite 35 cm**
Housing weight **Gewicht 17 kg**

Shaped camera housing, whose external controls enable the cameraman to modify, during diving, the most important adjustments, especially the sensitivity of the digital sensor, to draw the best quality and quantity from the light and sea colour. **Spezielles Kameragehäuse, mit dessen außen angebrachten Kontrollen der Kameramann während des Tauchens insbesondere die Empfindlichkeit des digitalen Sensors verändern kann, um Licht und Farbe optimal auszunutzen.**

Polecam Polecam

Length **Länge 80 cm**
Diameter **Durchmesser 30 cm**
Width **Breite 60 cm**
Weight **Gewicht 35 Kg**

Equipped with a Sony 950 camera, the underwater polecam is attached to a boat enabling the cameraman to film laterally marine creatures speeding up to 8 knots under the surface. **Die Unterwasser-Polecam ist mit einer Sony 950-Kamera ausgestattet und an einem Boot befestigt, um längsseits mitgeführt zu werden und marine Organismen unter der Oberfläche mit einer Geschwindigkeit bis zu 8 Knoten zu begleiten.**

Pulled Torpedo Jonas Geschleppter Torpedo Jonas

Length **Länge 1,60 m**
Diameter **Durchmesser 30 cm**
Width **Breite 66 cm**
Weight **Gewicht 70 Kg**

The torpedo hosts the lens and sensor of the camera. The optic fiber that brings images to the video recorder is used as a towing cable. Max speed 15 knots.

Der Torpedo enthält Objektiv und Sensor der Kamera. Das Faserkabel, das die Bilder zum Videorecorder bringt, wird auch zum Schleppen benutzt. Maximale Geschwindigkeit: 15 Knoten.

Pulled Torpedo Simeon Geschleppter Torpedo Simeon

Length **Länge 80 cm**
Diameter **Durchmesser 30 cm**
Width **Breite 60 cm**
Weight **Gewicht 35 Kg**





P Main species filmed during the four years of filming

P principales espèces filmées au cours des quatre années de tournage

Mammalia

Species	Author	Nom français	English name	Family	Order	Class	Date	Latitude	Longitude	Location	N°
Balaenoptera musculus	(Linnaeus, 1758)	Baleine bleue	Blue whale	Balaenopteridae	Cetartiodactyla	Mammalia	03/2007	26°04'N	111°16' W	Loreto - Sea of Cortez	38
Balaenoptera musculus	(Linnaeus, 1758)	Baleine bleue	Blue whale	Balaenopteridae	Cetartiodactyla	Mammalia	07/2006	32°35' N	117°20'W	Coronado Canyon - California	37
Megaptera novaeangliae	(Borowski, 1781)	Baleine à bosse	Humpback whale	Balaenopteridae	Cetartiodactyla	Mammalia	10/2005	22°25'S	151°20'W	Rurutu - French Polynesia	29
Megaptera novaeangliae	(Borowski, 1781)	Baleine à bosse	Humpback whale	Balaenopteridae	Cetartiodactyla	Mammalia	08/2008	16°56'S	050°01'E	Ste Marie Isl. - Madagascar	15
Megaptera novaeangliae	(Borowski, 1781)	Baleine à bosse	Humpback whale	Balaenopteridae	Cetartiodactyla	Mammalia	07/2008	58°06'N	135°09'W	Chatham Strait - Alaska	31
Megaptera novaeangliae	(Borowski, 1781)	Baleine à bosse	Humpback whale	Balaenopteridae	Cetartiodactyla	Mammalia	07/2005	31°35'S	029°40'E	Port St Johns - South Africa	09
Megaptera novaeangliae	(Borowski, 1781)	Baleine à bosse	Humpback whale	Balaenopteridae	Cetartiodactyla	Mammalia	02/2008	65°06'S	064°04'W	Pleneau IIs. - Antarctic	49
Megaptera novaeangliae	(Borowski, 1781)	Baleine à bosse	Humpback whale	Balaenopteridae	Cetartiodactyla	Mammalia	07/2008	27°59'S	153°28'E	Gold Cost - Australia	25
Balaenoptera edeni	Anderson, 1878	Rorqual de Bryde	Bryde's whale	Balaenopteridae	Cetartiodactyla	Mammalia	01/2008	11°54'N	067°04'W	Los Roques - Venezuela	48
Balaenoptera edeni	Anderson, 1878	Rorqual de Bryde	Bryde's whale	Balaenopteridae	Cetartiodactyla	Mammalia	06/2006	33°56'S	026°02'E	Port Elisabeth - South Africa	08
Balaenoptera physalus	(Linnaeus, 1758)	Rorqual commun	Fin whale	Balaenopteridae	Cetartiodactyla	Mammalia	11/2007	32°35'N	117°20'W	San Diego - California	37
Eubalaena australis	(Desmoulins, 1822)	Baleine franche	Southern right Whale	Balaenopteridae	Cetartiodactyla	Mammalia	08/2007	34°09'S	018°27'E	False Bay - South Africa	06
Physeter macrocephalus	Linnaeus, 1758	Cachalot	Sperm whale	Physeteridae	Cetartiodactyla	Mammalia	03/2008	16°07'N	061°48'W	La Guadeloupe Isl. - France	51
Physeter macrocephalus	Linnaeus, 1758	Cachalot	Sperm whale	Physeteridae	Cetartiodactyla	Mammalia	05/2007	38°26'N	028°33'W	Azores Isl. - Portugal	54
Delphinus capensis	Gray, 1828	Dauphin commun du Cap	Long-beaked common dolphin	Delphinidae	Cetartiodactyla	Mammalia	06/2006	33°56'S	026°02'E	Port Elisabeth - South Africa	08
Delphinus delphis	Linnaeus, 1758	Dauphin commun	Common dolphin	Delphinidae	Cetartiodactyla	Mammalia	09/2008	38°14'N	028°25'W	Azores Isl. - Portugal	54
Delphinus delphis	Linnaeus, 1758	Dauphin commun	Common dolphin	Delphinidae	Cetartiodactyla	Mammalia	11/2008	32°35'N	117°20'W	San Diego - California	37
Stenella longirostris	(Gray, 1828)	Dauphin stenelle à long bec	Spinner dolphin	Delphinidae	Cetartiodactyla	Mammalia	04/2008	08°37'N	084°11'W	Drake Bay - Costa Rica	45
Stenella longirostris	(Gray, 1828)	Dauphin stenelle à long bec	Spinner dolphin	Delphinidae	Cetartiodactyla	Mammalia	05/2006	25°04'N	034°56'E	Dolphin Reef - Egypt	12
Stenella frontalis	(Cuvier, 1829)	Dauphin tacheté atlantique	Atlantic spotted dolphin	Delphinidae	Cetartiodactyla	Mammalia	09/2008	38°14'N	028°25'W	Azores Isl. - Portugal	54
Stenella attenuata	Gray, 1846	Stenelle tachetée	Pantropical spotted Dolphin	Delphinidae	Cetartiodactyla	Mammalia	04/2008	08°37'N	084°11'W	Drake Bay - Costa Rica	12
Stenella attenuata	Gray, 1846	Stenelle tachetée	Pantropical spotted Dolphin	Delphinidae	Cetartiodactyla	Mammalia	01/2008	11°54'N	067°04'W	Los Roques - Venezuela	48
Tursiops truncatus	(Montagu, 1821)	Grand dauphin	Bottlenose dolphin	Delphinidae	Cetartiodactyla	Mammalia	07/2008	27°26'S	153°32'E	Stradbroke Isl. - Australia	25
Tursiops truncatus	(Montagu, 1821)	Grand dauphin	Bottlenose dolphin	Delphinidae	Cetartiodactyla	Mammalia	06/2007	33°02'S	137°36'E	Whyalla - Australia	21
Tursiops truncatus	(Montagu, 1821)	Grand dauphin	Bottlenose dolphin	Delphinidae	Cetartiodactyla	Mammalia	05/2008	18°46'N	111°03'W	Socorro Isl. - Mexico	39

Species	Author	Nom français	English name	Family	Order	Class	Date	Latitude	Longitude	Location	N°
Steno bredanensis	Lesson, 1828	Dauphin de sténo	Rough-toothed dolphin	Delphinidae	Cetartiodactyla	Mammalia	01/2008	11°54'N	067°04'W	Los Roques - Venezuela	48
Steno bredanensis	Lesson, 1828	Dauphin de sténo	Rough-toothed dolphin	Delphinidae	Cetartiodactyla	Mammalia	09/2008	38°14'N	028°25'W	Azores Isl. -Portugal	54
Lagenorhynchus obliquidens	Gill, 1865	Dauphin à flancs blancs	Pacific White-sided dolphins	Delphinidae	Cetartiodactyla	Mammalia	11/2007	32°35'N	117°20'W	San Diego - California	37
Orcinus orca	(Linnaeus, 1758)	Orque	Killer whale	Delphinidae	Cetartiodactyla	Mammalia	05/2008	34°08'S	172°07'E	Three Kings Isl. - NZ	28
Orcinus orca	(Linnaeus, 1758)	Orque	Killer whale	Delphinidae	Cetartiodactyla	Mammalia	04/2008	42°06'S	063°46'W	Valdes Peninsula - Argentina	50
Orcinus orca	(Linnaeus, 1758)	Orque	Killer whale	Delphinidae	Cetartiodactyla	Mammalia	07/2008	58°06'N	135°09'W	Chatham Strait - Alaska	31
Orcinus orca	(Linnaeus, 1758)	Orque	Killer whale	Delphinidae	Cetartiodactyla	Mammalia	11/2006	68°24'N	016°00'E	Lofoten Isl. - Norway	05
Globicephala macrorhynchus	(Gray, 1846)	Globicéphale tropical	Short-finned Pilot whale	Delphinidae	Cetartiodactyla	Mammalia	04/2008	08°37'N	084°11'W	Drake Bay - Costa Rica	45
Globicephala melaena	(Traill, 1809)	Globicéphale noir	Long-fin pilot whale	Delphinidae	Cetartiodactyla	Mammalia	11/2006	68°24'N	016°00'E	Lofoten Isl. - Norway	05
Pseudorca crassidens	Owen, 1846	Faux orque	False killer whale	Delphinidae	Cetartiodactyla	Mammalia	05/2008	34°08'S	172°07'E	Three Kings Isl. - NZ	28
Monodon monoceros	Linnaeus, 1758	Narval	Narwhal	Monodontidae	Cetartiodactyla	Mammalia	06/2007	73°44'N	084°49'W	Navy Board Inlet - Arctic	44
Delphinapterus leucas	(Pallas, 1776)	Bélouga	Beluga	Monodontidae	Cetartiodactyla	Mammalia	06/2007	68°50'N	133°21'W	Inuvik - Arctic	33
Arctocephalus pusillus	(Schreber, 1776)	Otarie à fourrure du Cap	South African fur seal	Otariidae	Carnivora	Mammalia	08/2007	34°09'S	018°27'E	False Bay - South Africa	50
Otaria flavescens	Shaw, 1800	Lion de mer d'Amérique Sud	South American sea lion	Otariidae	Carnivora	Mammalia	04/2008	42°06'S	063°46'W	Valdes Peninsula - Argentina	50
Zalophus californianus	(Lesson, 1828)	Otarie de Californie	Californian sea lion	Otariidae	Carnivora	Mammalia	03/2008	00°18'S	091°39'W	Fernandina Isl. - Galapagos	41
Zalophus californianus	(Lesson, 1828)	Otarie de Californie	Californian sea lion	Otariidae	Carnivora	Mammalia	11/2006	33°03'N	118°36'W	San Clemente IIs. - California	35
Arctocephalus galapagoensis	Heller, 1904	Otarie des Galapagos	Galapagos fur seal	Otariidae	Carnivora	Mammalia	03/2008	00°18'S	091°39'W	Fernandina Isl. - Galapagos	41
Lobodon carcinophaga	Hombroń & Jacquinot, 1842	Phoque crabier	Crabeater seal	Phocidae	Carnivora	Mammalia	02/2008	65°06'S	064°04'W	Pleneau Isl. - Antarctic	49
Phoca vitulina	Linnaeus, 1758	Phoque veau marin	Harbor seal	Phocidae	Carnivora	Mammalia	10/2007	36°39'N	121°56'W	Monterey Bay - California	34
Mirounga leonina	Linnaeus, 1758	Eléphant de mer austral	Southern elephant seal	Phocidae	Carnivora	Mammalia	04/2008	42°06'S	063°46'W	Valdes Peninsula - Argentina	50
Mirounga angustirostris	Gill, 1866	Eléphant de mer boréal	Northern elephant seal	Phocidae	Carnivora	Mammalia	11/2006	29°08'N	118°17'W	Guadalupe Isl. - Mexico	36
Leptonychotes weddellii	(Lesson, 1826)	Phoque de Weddell	Weddell seal	Phocidae	Carnivora	Mammalia	11/2007	66°40'S	140°00'E	Terre Adélie - Antarctic	20
Hydrurga leptonyx	(Blainville, 1820)	Léopard de mer	Leopard seal	Phocidae	Carnivora	Mammalia	02/2008	65°06'S	064°04'W	Pleneau Isl. - Antarctic	49
Erignathus barbatus	(Erxleben, 1777)	Phoque barbu	Bearded seal	Phocidae	Carnivora	Mammalia	06/2008	75°51'N	079°34'W	Cobburg Isl. - Arctic	47
Odobenus rosmarus	(Linnaeus, 1758)	Morse	Walrus	Odobenidae	Carnivora	Mammalia	06/2008	75°51'N	079°34'W	Cobburg Isl. - Arctic	47
Enhydra lutris	Linnaeus, 1758	Loutre de mer	Sea otter	Mustelidae	Carnivora	Mammalia	10/2007	36°39'N	121°56'W	Monterey Bay - California	34
Ursus maritimus	Phipps, 1774	Ours polaire	Polar bear	Ursidae	Carnivora	Mammalia	06/2007	73°44'N	084°49'W	Navy Board Inlet - Arctic	44
Dugong dugon	(Müller, 1776)	Dugong	Dugong	Dugongidae	Sirenia	Mammalia	05/2006	25°20'N	034°44'E	Märza Alam - Egypt	11
Dugong dugon	(Müller, 1776)	Dugong	Dugong	Dugongidae	Sirenia	Mammalia	07/2008	27°59'S	153°28'E	Gold Cost - Australia	25
Pelecanus occidentalis	Linnaeus 1766	Pelican brun	Brown pelican	Pelecanidae	Pelecaniformes	Aves	03/2008	36°33'N	121°56'W	Monterey Bay - California	34
Phalacrocorax harrisi	Rothschild, 1898	Cormoran aptère	Flightless cormorant	Phalacrocoracidae	Pelecaniformes	Aves	03/2008	00°18'S	091°39'W	Fernandina Isl. - Galapagos	41
Fregata minor	(Gmelin, 1789)	Frégate du Pacifique	Great frigatebird	Fregatidae	Pelecaniformes	Aves	04/2008	22°19'S	040°20'E	Europa Isl. - Mozambique Canal	13
Fregata magnificens	Mathews, 1914	Frégate superbe	Magnificent frigatebird	Fregatidae	Pelecaniformes	Aves	07/2008	04°49'N	051°56'W	Grand Connétable - Guyana	53
Sula capensis	(Lichtenstein, 1823)	Fou du Cap	Cape gannet	Sulidae	Pelecaniformes	Aves	07/2005	31°35'S	029°40'E	Port St Johns - South Africa	09
Sula capensis	(Lichtenstein, 1823)	Fou du Cap	Cape gannet	Sulidae	Pelecaniformes	Aves	06/2006	33°56'S	026°02'E	Port Elisabeth - South Africa	08
Larus atricilla	Linneus, 1758	Mouette atricille	Laughing gull	Laridae	Charadriforme	Aves	07/2008	04°49'N	051°56'W	Grand Connétable - Guyana	53

Mammalia

Aves

Species	Name Author	Nom français	English name	Family	Order	Class	Date	Latitude	Longitude	Location	N°
<i>Sterna maxima</i>	Boddaert,1783	Sterne royale	Royal tern	Sternidae	Charadriforme	Aves	07/2008	04°49'N	051°56'W	Grand Connétable - French Guyana	53
<i>Sterna sandvicensis</i>	Latham,1787	Sterne de Cayenne	Sandwich tern	Sternidae	Charadriforme	Aves	07/2008	04°49'N	051°56'W	Grand Connétable - French Guyana	53
<i>Sterna fuscata</i>	Linneus, 1766	Sterne fuligineuse	Sooty tern	Sternidae	Charadriforme	Aves	07/2008	04°49'N	051°56'W	Grand Connétable - French Guyana	53
<i>Anous stolidus</i>	Linneus, 1758	Noddi brun	Brown noddi	Sternidae	Charadriforme	Aves	07/2008	04°49'N	051°56'W	Grand Connétable - French Guyana	53
<i>Calonectris diomedea</i>	(Scopoli, 1769)	Puffin cendré	Shearwater	Procellariidae	Procellariiformes	Aves	09/2008	38°26'N	028°33'W	Azores Isl. - Portugal	54
<i>Aptenodytes forsteri</i>	Gray, 1844	Manchot empereur	Emperor penguin	Spheniscidae	Sphenisciformes	Aves	11/2007	66°40'S	140°00'E	Terre Adélie - Antarctic	20
<i>Pygoscelis adeliae</i>	(Hombron & Jacquinot, 1841)	Manchot Adélie	Adelie penguin	Spheniscidae	Sphenisciformes	Aves	11/2007	66°40'S	140°00'E	Terre Adélie - Antarctic	20
<i>Pygoscelis papua</i>	(Forster, 1781)	Manchot papou	Gentoo penguin	Spheniscidae	Sphenisciformes	Aves	02/2008	65°06'S	064°04'W	Pleneau IIs. - Antarctic	20
<i>Spheniscus mendiculus</i>	Sundevall, 1871	Manchot des Galapagos	Galapagos penguin	Spheniscidae	Sphenisciformes	Aves	03/2008	00°18'S	091°39'W	Fernandina Isl. - Galapagos	41
<i>Amblyrhynchus cristatus</i>	Bell, 1825	Iguane marin	Marine iguana	Iguanidae	Sauria	Reptilia	03/2008	00°18'S	091°39'W	Fernandina Isl. - Galapagos	41
<i>Dermochelys coriacea</i>	(Vandelli, 1761)	Tortue luth	Leatherback turtle	Dermochelyidae	Testudines	Reptilia	05/2008	04°53'N	052°15'W	Cayenne - French Guyana	52
<i>Chelonia mydas</i>	(Linnaeus, 1758)	Tortue verte	Green turtle	Cheloniidae	Testudines	Reptilia	05/2006	25°20'N	034°44E	Märza Alam - Egypt	11
<i>Chelonia mydas</i>	(Linnaeus, 1758)	Tortue verte	Green turtle	Cheloniidae	Testudines	Reptilia	03/2008	00°18'S	091°39'W	Fernandina Isl.- Galapagos	41
<i>Chelonia mydas</i>	(Linnaeus, 1758)	Tortue verte	Green turtle	Cheloniidae	Testudines	Reptilia	05/2008	18°46'N	111°03'W	Socorro Isl. - Mexico	39
<i>Chelonia mydas</i>	(Linnaeus, 1758)	Tortue verte	Green turtle	Cheloniidae	Testudines	Reptilia	04/2008	22°19'S	040°20'E	Europa Isl. - Mozambique Canale	13
<i>Chelonia mydas</i>	(Linnaeus, 1758)	Tortue verte	Green turtle	Cheloniidae	Testudines	Reptilia	05/2008	19°18'S	147°37E	Yongala wreck - Australia	24
<i>Laticauda colubrina</i>	(Schneider, 1799)	Tricot rayé	banded sea krait	Elapidae	Squamata	Reptilia	11/2007	22°19'S	166°13'W	Noumea - New Caledonia	27
<i>Aipysurus laevis</i>	Lacépède, 1804	Serpent olive	Oilive sea snake	Elapidae	Squamata	Reptilia	05/2008	19°18'S	147°37E	Yongala wreck - Australia	24
<i>Carcharodon carcharias</i>	(Linnaeus, 1758)	Grand requin blanc	Great white shark	Lamnidae	Lamniformes	Elasmobranchii	11/2006	29°08'N	118°17'W	Guadalupe Isl. - Mexico	36
<i>Carcharodon carcharias</i>	(Linnaeus, 1758)	Grand requin blanc	Great white shark	Lamnidae	Lamniformes	Elasmobranchii	08/2007	34°09'S	018°27'E	False Bay - South Africa	50
<i>Cetorhinus maximus</i>	(Gunnerus, 1765)	Requin pélerin	Basking shark	Cetorhinidae	Lamniformes	Elasmobranchii	08/2008	50°05'N	005°41'W	Cornwall - Great Britain	1
<i>Isurus oxyrinchus</i>	Rafinesque, 1809	Requin mako	Mako shark	Lamnidae	Lamniformes	Elasmobranchii	07/2006	32°35' N	117°20'W	Coronado Canyon - California	37
<i>Carcharias taurus</i>	(Rafinesque, 1810)	Requin taureau	Sand tiger shark	Odontaspidae	Lamniformes	Elasmobranchii	06/2006	30°15'S	030°49'E	Aliwal Shoal - South Africa	10
<i>Sphyrna lewini</i>	(Griffith & Smith, 1834)	Requin marteau halicorne	Scalloped hammerhead shark	Sphyrnidae	Carcharhiniformes	Elasmobranchii	04/2006	05°30'N	087°05'W	Coco Isl. - Costa Rica	42
<i>Triaenodon obesus</i>	(Rüppell, 1837)	Requin à pointes blanches	Whitetip reefshark	Carcharhinidae	Carcharhiniformes	Elasmobranchii	04/2006	05°30'N	087°05'W	Coco Isl. - Costa Rica	42
<i>Prionace glauca</i>	(Linnaeus, 1758)	Requin bleu	Blue shark	Carcharhinidae	Carcharhiniformes	Elasmobranchii	07/0006 :	32°35' N	117°20'W	Coronado Canyon - California	37
<i>Carcharhinus brachyurus</i>	(Günther, 1870)	Requin cuivre	Copper shark	Carcharhinidae	Carcharhiniformes	Elasmobranchii	07/2005	31°35'S	029°40'E	Port St Johns - South Africa	09
<i>Carcharhinus albimarginatus</i>	(Rüppell, 1837)	Requin à marges blanches	Silvertip shark	Carcharhinidae	Carcharhiniformes	Elasmobranchii	04/2006	05°30'N	087°05'W	Coco Isl. - Costa Rica	42
<i>Carcharhinus limbatus</i>	(Valenciennes, 1839)	Requin bordé	Blacktip shark	Carcharhinidae	Carcharhiniformes	Elasmobranchii	06/2006	30°15'S	030°49'E	Aliwal Shoal - South Africa	10
<i>Carcharhinus longimanus</i>	(Poey, 1861)	Requin longimane	Oceanic whitetip shark	Carcharhinidae	Carcharhiniformes	Elasmobranchii	05/2006	25°20'N	034°44E	Märza Alam - Egypt	11
<i>Carcharhinus falciformis</i>	(Müller & Henle, 1839)	Requin soyeux	Silky shark	Carcharhinidae	Carcharhiniformes	Elasmobranchii	04/2008	08°37'N	084°11'W	Drake Bay - Costa Rica	45
<i>Carcharhinus melanopterus</i>	(Quoy and Gaimard, 1824)	Requin pointes noires	Blacktip reef shark	Carcharhinidae	Carcharhiniformes	Elasmobranchii	10/2005	17°28'S	149°49'W	Moorea Isl. - French Polynesia	30
<i>Galeocerdo cuvier</i>	(Peron and Le Sueur, 1822)	Requin tigre	Tiger shark	Carcharhinidae	Carcharhiniformes	Elasmobranchii	06/2006	30°15'S	030°49'E	Aliwal Shoal - South Africa	10
<i>Rhincodon typus</i>	Smith, 1828	Requin baleine	Whale shark	Rhincodontidae	Orectolobiformes	Elasmobranchii	01/2008	11°54'N	067°04'W	Los Roques - Venezuela	48
<i>Rhincodon typus</i>	Smith, 1828	Requin baleine	Whale shark	Rhincodontidae	Orectolobiformes	Elasmobranchii	04/2006	05°30'N	087°05'W	Coco Isl. - Costa Rica	42

Species	Author	Nom français	English name	Family	Order	Class	Date	Latitude	Longitude	Location	N°
Orectolobus		Requin tapis	Woobegong	Orectolobidae	Orectolobiforme	Elasmobranchii	05/2008	19°18'S	147°37E	Yongala wreck - Australia	24
Stegostoma fasciatum	(Hermann, 1783)	Requin zèbre	Zebra shark	Stegostomatidae	Orectolobiforme	Elasmobranchii	11/2007	20°35'S	165°08'E	Hiengiène - New Caledonia	26
Manta birostris	(Walbaum, 1792)	Raie manta	Giant manta	Myliobatidae	Rajiformes	Elasmobranchii	05/2008	18°46'N	111°03'W	Socorro Isl. - Mexico	39
Manta birostris	(Walbaum, 1792)	Raie manta	Giant manta	Myliobatidae	Rajiformes	Elasmobranchii	01/2008	11°54'N	067°04'W	Los Roques - Venezuela	48
Rhinoptera bonasus	(Mitchill, 1815)	Raie mourine	Cownose ray	Myliobatidae	Rajiformes	Elasmobranchii	03/2008	00°18'S	091°39'W	Fernandina Isl.- Galapagos	41
Mobula tarapacana	(Philippi, 1892)	Mobula diable de mer	Lesser devil ray	Myliobatidae	Rajiformes	Elasmobranchii	04/2008	08°37'N	084°11'W	Drake Bay - Costa Rica	45
Taeniura meyeni	Müller & Henle, 1841	Raie marbrée	Blotched fantail ray	Dasyatidae	Rajiformes	Elasmobranchii	04/2006	05°30'N	087°05'W	Coco Isl. - Costa Rica	42
Himantura fai	Jordan & Seale, 1906	Raie pastenague himantura	Pink whipray	Dasyatidae	Rajiformes	Elasmobranchii	10/2005	17°28'S	149°49'W	Moorea Isl. - French Polynesia	30
Torpedo californica	Ayres, 1855	Raie torpille	Pacific torpedo ray	Torpedinidae	Torpediniformes	Elasmobranchii	11/2006	33°03'N	118°36'W	San Clemente IIs. - California	35
Callorhinchus milii	Bory de Saint-Vincent, 1823	Chymère éléphant	Elephant fish	Callorhinchidae	Chimaeriformes	Holocephali	04/2008	38°29'S	145°02'E	Melbourne - Australia	21
Istiophorus platypterus	(Shaw, 1792)	Poisson voilier	Sailfish	Istiophoridae	Perciformes	Actinopterygii	02/2007	21°16'N	086°45'W	Harrowhead Bank - Mexico	43
Xiphias gladius	Linnaeus, 1758	Espadon	Swordfish	Xiphiidae	Perciformes	Actinopterygii	05/2008	39°11'N	008°17'E	San Pietro Isl. - Sardigna	04
Thunnus thynnus	(Linnaeus, 1758)	Thon rouge	Northern bluefin tuna	Scombridae	Perciformes	Actinopterygii	06/2007	36°33'N	027°27'E	Kos Isl. - Greece	7
Thunnus albacares	(Bonnaterre, 1788)	Thon à nageoire jaune	Yellowfin tuna	Scombridae	Perciformes	Actinopterygii	04/2008	08°37'N	084°11'W	Drake Bay - Costa Rica	45
Thunnus alalunga	(Bonnaterre, 1788)	Thon germon	Albacore	Scombridae	Perciformes	Actinopterygii	09/2008	38°26'N	028°33'W	Azores Isl. - Portugal	54
Scomber japonicus	Houttuyn, 1782	Chinchard mexicain	Pacific mackerel	Scombridae	Perciformes	Actinopterygii	11/2006	29°08'N	118°17'W	Guadalupe Isl. - Mexico	36
Sardinops sagax	(Jenyns, 1842)	Sardinops d'Afrique du Sud	Southern African pilchard	Clupeidae	Clupeiformes	Actinopterygii	07/2005	31°35'S	029°40'E	Port St Johns - South Africa	09
Trachurus trachurus	(Linnaeus, 1758)	Chinchard	Horse mackerel	Carangidae	Perciformes	Actinopterygii	09/2008	38°26'N	028°33'W	Azores Isl. - Portugal	54
Caranx sexfasciatus	Quoy & Gaimard, 1825	Carangue aux gros yeux	Bigeye trevally	Carangidae	Perciformes	Actinopterygii	04/2006	05°30'N	087°05'W	Coco Isl. - Costa Rica	42
Elegatis bipinnulata	(Quoy and Gaimard, 1825)	Carangue arc-en-ciel	Rainbow runner	Carangidae	Perciformes	Actinopterygii	04/2006	05°30'N	087°05'W	Coco Isl. - Costa Rica	42
Trachinotus blochii	(Lacepède, 1801)	Pompaneau lune	Snubnose pompano	Carangidae	Perciformes	Actinopterygii	11/2007	22°19'S	166°13'W	Noumea - New Caledonia	27
Carangoides fulvoguttatus	(Forsskål, 1775)	Carangue pailletée	Yellowspotted trevally	Carangidae	Perciformes	Actinopterygii	05/2008	19°18'S	147°37E	Yongala wreck - Australia	24
Caranx ignobilis	(Forsskål, 1775)	Carangue à grosse tête	Giant trevally	Carangidae	Perciformes	Actinopterygii	05/2008	19°18'S	147°37E	Yongala wreck - Australia	24
Semicossyphus reticulatus	(Valenciennes, 1839)	Labre géant à tête de mouton	Asian sheephead wrasse	Labridae	Perciformes	Actinopterygii	07/2008	39°11'N	139°32'E	Sado Isl. - Japan	19
Epibulus insidiator	(Pallas, 1770)	Epibule gourami	Slingjaw wrasse	Labridae	Perciformes	Actinopterygii	05/2008	19°14'S	146°49'E	Townsville - Australia	23
Bodianus diplotaenia	(Gill, 1862)	Poisson-porc mexicain	Mexican hogfish	Labridae	Perciformes	Actinopterygii	04/2006	05°30'N	087°05'W	Coco Isl. - Costa Rica	42
Cheilinus undulatus	Rüppell, 1835	Poisson napoléon	Humphead wrasse	Labridae	Perciformes	Actinopterygii	05/2006	25°04'N	034°56'E	Dolphin Reef - Egypt	12
Bolbometopon muricatum	(Valenciennes, 1840)	Poisson perroquet à bosse	Green humphead parrotfish	Scaridae	Perciformes	Actinopterygii	10/2008	14°40'S	145°40'E	Great Barrier Reef - Australia	22
Plectorhinchus lineatus	(Linnaeus, 1758)	Grosses lèvres gaterin	Diagonal-banded sweetlips	Haemulidae	Perciformes	Actinopterygii	11/2007	22°19'S	166°13'E	Noumea - New Caledonia	27
Anisotremus interruptus	(Gill, 1862)	Grogneur à queue jaune	Yellowtail grunt	Haemulidae	Perciformes	Actinopterygii	04/2006	05°30'N	087°05'W	Coco Isl. - Costa Rica	42
Epinephelus tukula	Morgans, 1959	Mérou patate	Potato cod	Serranidae	Perciformes	Actinopterygii	12/2008	14°40'S	145°40'E	Great Barrier Reef - Australia	22
Dermatolepis dermatolepis	(Boulenger, 1895)	Mérou cuir	Leather bass	Serranidae	Perciformes	Actinopterygii	04/2006	05°30'N	087°05'W	Coco Isl. - Costa Rica	42
Paranthias colonus	(Valenciennes, 1846)	Badèche du Pacifique	Pacific creolefish	Serranidae	Perciformes	Actinopterygii	04/2006	05°30'N	087°05'W	Coco Isl. - Costa Rica	42
Epinephelus tauvina	(Forsskål, 1775)	Mérou loutre	Greasy grouper	Serranidae	Perciformes	Actinopterygii	11/2007	22°19'S	166°13'E	Noumea - New Caledonia	27
Cephalopholis miniatus	(Forsskål, 1775)	Vieille de corail	Coral hind	Serranidae	Perciformes	Actinopterygii	05/2006	25°04'N	034°56'E	Dolphin Reef - Egypt	12

Species	Author	Nom français	English name	Family	Order	Class	Date	Latitude	Longitude	Location	N°
Lutjanus viridis	(Valenciennes, 1846)	Vivaneau bourgeois	Blue and gold snapper	Lutjanidae	Perciformes	Actinopterygii	04/2006	05°30'N	087°05'W	Coco Isl. - Costa Rica	42
Lutjanus fulviflamma	(Forsskål, 1775)	Vivaneau gibelot	Blackspot snapper	Lutjanidae	Perciformes	Actinopterygii	12/2008	14°40'S	145°40'E	Great Barrier Reef - Australia	22
Lutjanus bohar	(Forsskål, 1775)	Vivaneau chien rouge	Two-spot red snapper	Lutjanidae	Perciformes	Actinopterygii	12/2008	14°40'S	145°40'E	Great Barrier Reef - Australia	22
Lutjanus monostigma	(Cuvier, 1828)	Vivaneau eglefin	One-spot snapper	Lutjanidae	Perciformes	Actinopterygii	12/2008	14°40'S	145°40'E	Great Barrier Reef - Australia	22
Mulloidichthys vanicolensis	(Valenciennes, 1831)	Barbet à nageoires jaunes	Yellowfin goatfish	Mullidae	Perciformes	Actinopterygii	12/2008	14°40'S	145°40'E	Great Barrier Reef - Australia	22
Cirrhichthys falco	Randall, 1963	Poisson épervier	Dwarf hawkfish	Cirrhitidae	Perciformes	Actinopterygii	11/2007	22°19'S	166°13'E	Noumea - New Caledonia	27
Johnrandallia nigrirostris	(Gill, 1862)	Poisson-papillon à nez noir	Blacknosed butterflyfish	Chaetodontidae	Perciformes	Actinopterygii	04/2006	05°30'N	087°05'W	Coco Isl. - Costa Rica	42
Hypsypops rubicundus	(Girard, 1854)	Poison garibaldi	Garibaldi damselfish	Pomacentridae	Perciformes	Actinopterygii	11/2006	33°03'N	118°36'W	San Clemente IIs. - California	35
Amphiprion melanopus	Bleeker, 1852	Poisson clown	Fire clownfish	Pomacentridae	Perciformes	Actinopterygii	11/2007	22°19'S	166°13'E	Noumea - New Caledonia	27
Amphiprion akindynos	Allen, 1972	Poisson clown à deux bandes	Barrier reef anemonefish	Pomacentridae	Perciformes	Actinopterygii	11/2007	22°19'S	166°13'E	Noumea - New Caledonia	27
Holacanthus passer	Valenciennes, 1846	Demoiselle royale	King angel fish	Pomacanthidae	Perciformes	Actinopterygii	03/2008	00°18'S	091°39'W	Fernandina Isl. - Galapagos	41
Holacanthus clarionensis	Gilbert, 1891	Poisson ange de clarion	Clarion angelfish	Pomacanthidae	Perciformes	Actinopterygii	05/2008	18°46'N	111°03'W	Socorro Isl. - Mexico	39
Acanthurus triostegosus	(Linnaeus, 1758)	Chirurgien bagnard	Convict surgeonfish	Acanthuridae	Perciformes	Actinopterygii	04/2006	05°30'N	087°05'W	Coco Isl. - Costa Rica	42
Prionurus laticlavius	(Valenciennes, 1846)	Chirurgien à queue jaune	Razor surgeonfish yellowtail	Acanthuridae	Perciformes	Actinopterygii	04/2006	05°30'N	087°05'W	Coco Isl. - Costa Rica	42
Paracanthurus hepatus	(Linnaeus, 1766)	Chirurgien bleu	Palette surgeonfish	Acanthuridae	Perciformes	Actinopterygii	11/2007	22°19'S	166°13'W	Noumea - New Caledonia	27
Neoclinus blanchardi	Girard, 1858	Blennie tubicole	Sarcastic fringehead	Chaenopsidae	Perciformes	Actinopterygii	11/2006	33°03'N	118°36'W	San Clemente IIs. - California	35
Pristigenys serrula	(Gilbert, 1891)	Beauclaire sémaphore	Popeye catalufa	Priachantidae	Beryciformes	Actinopterygii	04/2006	05°30'N	087°05'W	Coco Isl. - Costa Rica	42
Mola mola	(Linnaeus, 1758)	Poisson lune	Ocean sunfish	Molidae	Tetraodontiformes	Actinopterygii	07/2006	32°35'N	117°20'W	Coronado Canyon - California	37
Diodon holocanthus	Linnaeus, 1758	Diodon	Long-spine porcupinefish	Diodontidae	Tetraodontiformes	Actinopterygii	03/2008	00°18'S	091°39'W	Fernandina Isl. - Galapagos	41
Balistes caprisus	Gmelin, 1789	Baliste cabri	Grey triggerfish	Balistidae	Tetraodontiformes	Actinopterygii	05/2007	38°26'N	028°33'W	Azores Isl. - Portugal	54
Aluterus scriptus	(Osbeck, 1765)	Poisson lime gribouille	Scrawled leatherjacket	Monacanthidae	Tetraodontiformes	Actinopterygii	04/2006	05°30'N	087°05'W	Coco Isl. - Costa Rica	42
Antennarius	Lacepède, 1798	Poisson antennaire	Frogfish	Antennariidae	Lophiiformes	Actinopterygii	05/2008	19°14'S	146°49'E	Townsville - Australia	23
Gymnothorax javanicus	(Bleeker, 1859)	Murène javanaise	Giant moray	Muraenidae	Anguilliformes	Actinopterygii	09/2005	17°36'S	149°49'W	Moorea Isl. - French polynesia	30
Gymnothorax thyrsoideus	(Richardson, 1845)	Murène à œil blanc	Greyface moray	Muraenidae	Anguilliformes	Actinopterygii	05/2008	19°14'S	146°49'E	Townsville - Australia	23
Rhinomuraena quaesita	Garman, 1888	Murène ruban	Ribbon moray	Muraenidae	Anguilliformes	Actinopterygii	05/2008	19°14'S	146°49'E	Townsville - Australia	23
Heteroconger hassi	Klausewitz & Eibl-Eibesfeldt, 1959	Anguille jardinière	Spotted garden eel	Congridae	Anguilliformes	Actinopterygii	09/2008	01°28'N	125°14'E	Lembah Strait - Indonesia	16
Aeoliscus strigatus	(Günther, 1861)	Poisson rasoir	Razorfish	Centriscidae	Syngnathiformes	Actinopterygii	09/2008	01°28'N	125°14'E	Lembah Strait - Indonesia	16
Phycodurus eques	(Günther, 1865)	Dragon de mer feuillu	Leafy seadragon	Syngnathidae	Syngnathiformes	Actinopterygii	06/2007	33°02'S	137°36'E	Whyalla - Australia	21
Rhinopias eschmeyeri	Condé, 1977	Poisson scorpion gingembre	Eschmeyer's scorpionfish	Scorpaenidae	Scorpaeniformes	Actinopterygii	05/2008	19°14'S	146°49'E	Townsville - Australia	23
Pterois volitans	(Linnaeus, 1758)	Rascasse volante	Lionfish	Scorpaenidae	Scorpaeniformes	Actinopterygii	05/2008	19°14'S	146°49'E	Townsville - Australia	23
Scorpaenopsis oxycephala	(Bleeker, 1849)	poisson scorpion à tête plate	Tasseled scorpionfish	Scorpaenidae	Scorpaeniformes	Actinopterygii	05/2006	25°04'N	34°56'E	Dolphin Reef - Egypt	12
Dactyloptena orientalis	(Cuvier, 1829)	Grondin volant	Oriental flying gurnard	Dactylopteridae	Scorpaeniformes	Actinopterygii	05/2008	19°14'S	146°49'E	Townsville - Australia	23
Synanceia verrucosa	Bloch & Schneider, 1801	Poisson pierre	Reef stonefish	Synanceiidae	Scorpaeniformes	Actinopterygii	05/2008	19°14'S	146°49'E	Townsville - Australia	23
Inimicus didactylus	(Pallas, 1769)	Rascasse ennemie	Bearded ghoul	Synanceiidae	Scorpaeniformes	Actinopterygii	10/2008	01°28'N	125°14'E	Lembah Strait - Indonesia	16
Oncorhynchus nerka	(Walbaum, 1792)	Saumon rouge	Sockeye salmon	Salmonidae	Salmoniformes	Actinopterygii	09/2008	56°34'N	135°00'W	Port Banks - Alaska	32

Species	Author	Nom français	Nom anglais	Family	Order	Class	Date	Latitude	Longitude	Location	N°
Thysanoessa spinifera	Holmes, 1900	Krill	Krill	Euphausiidae	Euphausiacea	Malacostraca	07/2006	32°35'N	117°20'W	Coronado Canyon - California	37
Dromia dormia	(Linnaeus, 1763)	Crabe dromia	Sleepy sponge crab	Dromiidae	Decapoda	Malacostraca	11/2007	22°19'S	166°13'E	Noumea - New Caledonia	27
Dardanus megistos	(J. W. Herbst, 1804)	Bernard l'ermite	White-spotted hermit crab	Diogenidae	Decapoda	Malacostraca	11/2007	22°19'S	166°13'E	Noumea - New Caledonia	27
Grapsus grapsus	(Linnaeus, 1758)	Crabe rouge des Galapagos	Sally lightfoot crab	Grapsidae	Decapoda	Malacostraca	03/2008	00°18'S	091°39'W	Fernandina Isl.- Galapagos	41
Panulirus ornatus	(Fabricius, 1798)	Langouste porcelaine	Craifish	Palinuridae	Decapoda	Malacostraca	11/2007	22°19'S	166°13'E	Noumea - New Caledonia	27
Leptomithrax gaimardii	Miers, 1876	Crabe araignée de mer	Spider crab	Majidae	Decapoda	Malacostraca	04/2008	38°29'S	145°02'E	Melbourne - Australia	21
Palaemon serratus	(Pennant, 1777)	Crevette bouquet	Common prawn	Palaemonidae	Decapoda	Malacostraca	01/2009	48°22'N	004°29'W	Brest - France	03
Odontodactylus scyllarus	(Linnaeus, 1758)	Squille mante	Peacock mantis shrimp	Squillidea	Decapoda	Malacostraca	05/2008	19°14'S	146°49'E	Townsville - Australia	23
Limulus polyphemus	(Linnaeus, 1758)	Limule	Horseshoe crab	Limulidae	Xiphosurida	Merostomata	05/2008	31°59'N	080°51'W	Savannah - USA	46
Tremoctopus violaceus	Delle Chiaje, 1830	Pieuvre violacée	Blanket octopus	Tremoctopodidae	Octopoda	Cephalopoda	10/2007	35°38'N	132°27'E	Shimane - Japan	17
Sepia latimanus	Quoy & Gaimard, 1832	Seiche	Broadclub cuttlefish	Sepiidae	Sepiida	Cephalopoda	10/2008	01°28'N	125°14'E	Lembah Strait - Indonesia	16
Sepia apama	Gray, 1849	Seiche géante	Australian giant cuttlefish	Sepiidae	Sepiida	Cephalopoda	06/2007	33°02'S	137°36'E	Whyalla - Australia	21
Crepidula fornicata	Linnaeus, 1758	Crépidule	Common slipper shell	Calyptraeidae	Mesogastropoda	Gastropoda	01/2009	48°22'N	004°29'W	Brest - France	03
Strombus latissimus	Linnaeus, 1758	Strombe sauteur	Conch	Strombidae	Caenogastropoda	Gastropoda	11/2007	22°19'S	166°13'E	Noumea - New Caledonia	27
Hexabranchnus sanguineus	(Rüppell & Leudkart, 1830)	Danseuse espagnole	Spanish dancer	Hexabranchnidae	Nudibranchia	Gastropoda	05/2008	19°14'S	146°49'E	Townsville - Australia	23
Diadema setosum	(Leske, 1778)	Oursin diadème	Long-spined sea urchin	Diadematidae	Echinothuroida	Echinoidea	11/2007	22°19'S	166°13'E	Noumea - New Caledonia	27
Paracentrotus lividus	Lamarck, 1810	Oursin violet	Rock urchin	Echinidae	Echinoida	Echinoidea	01/2009	48°22'N	004°29'W	Brest - France	03
Nemopilema nomurai	Kishinouye, 1922	Méduse d'Echizen	Nomura's jellyfish	Rhizostomatidae	Rhizostomeae	Scyphozoa	10/2007	35°38'N	132°27'E	Shimane - Japan	17
Chrysaora fuscescens	Brandt, 1835	Méduse dorée	Sea nettle	Pelagiidae	Semaeostomeae	Scyphozoa	10/2007	36°33'N	121°56'W	Monterey Bay - California	34
Aurelia sp.		Méduse aurélia	Moon jelly	Ulmaridae	Semaeostomeae	Scyphozoa	07/2008	39°11'N	139°32'E	Sado Isl. - Japan	19
Aurelia sp.		Méduse aurélia	Moon jelly	Ulmaridae	Semaeostomeae	Scyphozoa	10/2007	36°33'N	121°56'W	Monterey Bay - California	34
Cyanea capillata	(Linnaeus, 1758)	Méduse crinière de lion	Lion's mane	Cyaneidae	Semaeostomeae	Scyphozoa	08/2008	50°05'N	005°41'W	Cornwall - Great Britain	01
Beroe forskalii	Milne Edwards, 1841	Béroé	Beroe	Beroidae	Beroida	Ctenophora	04/2008	08°37'N	084°11'W	Drake Bay - Costa Rica	45
Cyclosalpa		Cyclosalpe	Cyclosalpa	Salpidae	Salpida	Thaliacea	07/2006	32°35'N	117°20'W	Coronado Canyon - California	37
Salpa		Salpe	Salpa	Salpidae	Salpida	Thaliacea	05/2007	38°26'N	028°33'W	Azores Isl. - Portugal	54
Pyrosoma	Péron, 1804	Pyrozome	Fire salp	Pyrosomatidae	Pyrosomida	Thaliacea	05/2007	38°26'N	028°33'W	Azores Isl. - Portugal	54
Diploria	(Dana, 1846)	Corail cerveau	Brain coral	Faviidae	Scleractinia	Anthosoa	08/2007	28°14'N	093°17'W	Flower garden bank - Mexico	40
Spirobranchus	Pallas, 1766	Vers sapin de Noël	Christmas Tree Worm	Serpulidae	Canalipalpata	Polychaeta	08/2007	28°14'N	093°17'W	Flower garden bank - Mexico	40

Decapoda

Mollusca

Scyphozoa

Credits

SCIENTIFIC DIRECTION

Dr. Myriam Sibuet

Vice-Chair, Census of Marine Life programme

Dr. François Sarano *scientific advisor, OCEANS film*

ARTISTIC DIRECTION AND DESIGN

Marion Sarano

ACKNOWLEDGMENTS

We wish to express our thanks to all the persons who helped in the making of this booklet and especially:

GALATÉE FILMS OCEANS

Stéphane Durand *Scientific Advisor*

Dr. Yvon Le Maho *Académie des Sciences, Scientific Advisor*

Yvette Mallet *Producer and Outreach*

Nicolas Mauvernay *Producer*

Olli Barbé *Line Producer*

Special thanks to all members of the Galatée team who were involved in the OCEANS Project.

CENSUS OF MARINE LIFE

Dr. Jesse H. Ausubel *Vice-President for Programs, Alfred P. Sloan Foundation*

Dr. Frederick Grassle *Founder and Chair Emeritus, Scientific Steering Committee*

Dr. Edward Vanden Berghe *Ocean Biogeographic Information System*

Dr. David Patterson *Encyclopedia of Life*

Dr. Patrick Halpin and **Ei Fujioka** *Mapping and Visualization Team*

Sara Hickox and **Darlene Crist** *Education and Outreach Team*

Special thanks to all the scientists in Census of Marine Life field projects for their help in providing access to and expertise about subjects of the film. Special thanks also to all partners, in particular
Laure Fournier, Fondation Total which supports **Census of Marine Life** programme.

TOTAL
FOUNDATION

Photographs

Hideki Abe

p28 - p29 c - p33 hd

Koji Nakamura

p25 bg - p33 hg

Stéphane Durand

p12 - p13 - p16 - p17 hd,c

David Reichert

p11 cg

Yves Gladu

p 29 hg

Roberto Rinaldi

*cover - p7 - p19 bg
p21 bd - p23 bg*

Richard Herrmann

*p6 - p7 d - p18 - p19 cg, c, d
p21 hg - p23 bd - p24 d - p31 hd
p32 - p33 cg - p35 bg, d
p35 bg, bd- p36 c, hd - p37
back cover*

Julien Samson

p36 bd

Pascal Kobeh

*p4 - p8 bg - p9 h, cd
p10 hg, bg, c - p11, bg, c, bd
p17 hg,cg p19 bg, d - p20 cg, bd
p21 cg, bg, bd - p22 - p23 cd
p24 hg - p25 hg, hd - p27 hd, hg
p29 bd - p30 p31 cd*

François Sarano

*p5 - p7 hg - p9 hg, cg, bg
p10 cg, d - p15 c - p21 hd, cd
p23 hd - p26 bg - p33 bd - p34
p35 hg - p36 hg - p34 -p35 hg
p36 hg*

Mathieu Simonet

p13 hd - p15 g - p35 hd - p44 h

Vincent Lecomte

p14

François Xavier Mayer

p7 hd

Renan Marzin

p36 bg

Photogrammes Galatée

*p7 g - p8 hg, cg, hd, cd - p11 hd
p15 dh, db - p19 hg - p20 cd,bg
p23 hg, hc - p24 gc, gb - p25 cg
p26 hg, cg, d - p27 g, c, b - p31
hg, bg, cd, bd - p33 bg*

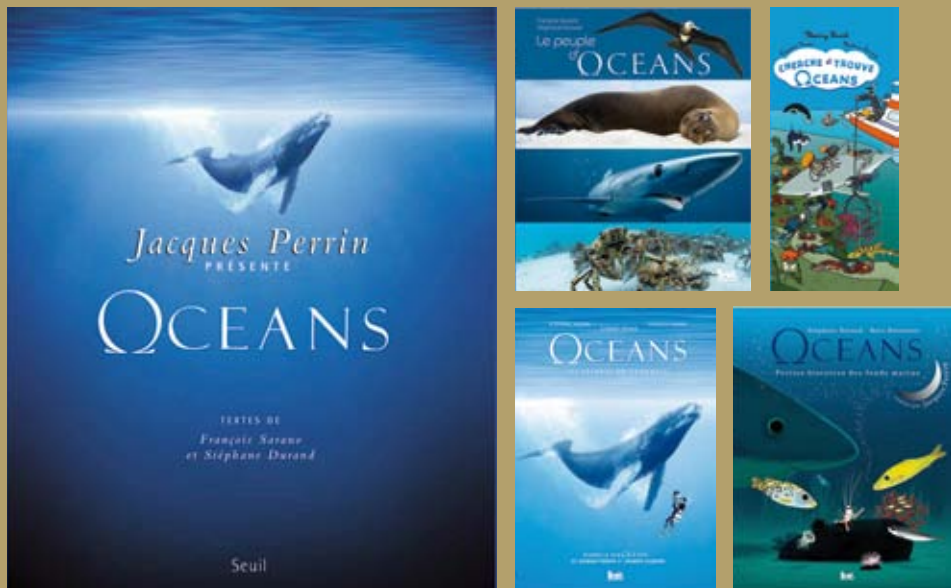
Johann Mousseau

p45

GALATÉE
FILMS

www.oceans-lefilm.com

Books derived from Ω CEANS, a film by Jacques Perrin and Jacques Cluzaud
Livres tirés du film Ω CEANS de Jacques Perrin et Jacques Cluzaud



Éditions du Seuil
November 2009

Ω CEANS coffee table book, 29x34 cm, 352 pages, 450 photos.

The making of and the scientific information about the main species of the film.
L'aventure du film et les informations scientifiques sur les principales espèces.
Texte by François Sarano and Stéphane Durand.

Le Peuple d' Ω CEANS for 8 - 12 year old children, 150 photos.

A description of the main species filmed. Une description des principales espèces filmées.
Texte by François Sarano and Stéphane Durand.

Cherche et trouve, Ω CEANS for 2 - 6 year old children, illustrations.

5 landscapes in which to find the animals of the film. 5 dessins où chercher les animaux dans leurs milieux.
Illustrations by Thierry Laval.

Ω CEANS, Les secrets du tournage, for 8 - 14 year old children, photos and drawings.

The technical and human adventure of the movie. Les coulisses du tournage.
Texte by François Sarano and Stéphane Durand, illustrations by Clément Devaux.

Ω CEANS, Petites histoires des fonds marins Tales for 8 - 10 year old children.

Contes pour enfants. Texte by Stéphane Durand, CD of Jacques Perrin telling the 12 tales,
illustrations by Marc Boutavant.



CENSUS
OF MARINE LIFE

FONDATION
TOTAL

VEOLIA
ENVIRONNEMENT

FONDATION
BETTENCOURT
SCHUELLER

CA CRÉDIT
AGRICOLE

edf

esa
European Space Agency
Agence spatiale européenne



A look at marine life

Ein Blick auf das Leben im Meer



Discoveries are remembered from images of explorers: reaching the poles, climbing Mount Everest, the planting of a flag on the moon, and the first close-up photographs of deep-sea hydrothermal vent animals. The Galatée explorers have documented both the grandeur and otherness of life in the ocean. Some of the world's most experienced underwater cinematographers risk their lives in the jaws of predatory sharks and amid a frenzy of birds diving to feed on deep-water fishes. New cameras made for **ΩCEANS** follow animals in a way never experienced before, providing images so special that they are opening another chapter in the history of oceanic discovery.

Dr. J. Frederick Grassle

An Entdeckungen erinnert man sich durch Bilder von Pionieren: das Erreichen der Pole, die Besteigung des Mount Everest, das Errichten einer Flagge auf dem Mond, die ersten Nahaufnahmen von Tieren an Hydrothermalquellen. Die Forscher von Galatée haben die Pracht und Andersartigkeit des Lebens im Ozean dokumentiert. Einige der erfahrensten Unterwasserfilmer der Welt haben im Maul räuberischer Haie und inmitten einer erregten Menge von Seevögeln, die zum Fangen von Tiefseefischen taucht, ihr Leben riskiert. Neue Kameras, speziell für Unsere Ozeane entwickelt, folgen Tieren auf eine Weise, die so einzigartige Bilder liefert, dass sie ein neues Kapitel in der Geschichte der Meeresforschung aufschlagen.