

SINCE 1972
40
YEARS



quadral 

STEREO

SURROUND

WIRELESS

SOUNDBOOK 2015
INTERNATIONAL CATALOGUE

LEGENDARY GERMAN
ENGINEERING



About us	4
AURUM	6
Quality and technology	8
AURUM TITAN	10
AURUM VULKAN	12
AURUM MONTAN	14
AURUM ORKAN	16
AURUM WOTAN	17
AURUM ALTAN, MEGAN	18
AURUM ORKUS	19
AURUM PHASE	20
AURUM CENTER SPEAKERS	22
AURUM Aktiv	24
AURUM ORKAN/ALTAN Aktiv	26
AURUM Electronic	28
AURUM M10	30
AURUM P8/M8	32
AURUM A5/C5 DA	34

Welcome to quadral

CONTENT

We develop, design, and build loudspeakers. With passion.

What we do, is done skilfully – built upon decades of experience; mastering physical laws, patience, and the sophisticated sensitivity of evaluating what's 'good', but then how we develop that in achieving 'excellence'. Since the beginning, quadral has represented the pursuit of technical ingenuity – a result that you can most definitely hear and feel.

With the quadral design, our products adapt harmonically into every kind of living environment – one that you can easily see.

quadral loudspeakers deliver an honest, truthful experience of sound culture at the highest level. Have fun choosing and enjoying a genuine sound – close to ideal.

PLATINUM M	36
CHROMIUM STYLE (NEW)	40
RHODIUM	44
ASCENT LE	48
ARGENTUM	52
MAGIQUE	56
RONDO AKTIV	58
PHASE, MAXI, IPSO	60
SUBWOOFER (QUBE)	62
SURROUND SETS	64
ACCESSORIES	67

A man with a beard, wearing a dark tuxedo and a black bow tie, is looking down at a white envelope he is holding. He is standing in front of a large, ornate classical painting. The painting depicts a woman in a white dress, possibly a saint or a historical figure, surrounded by other figures. The scene is set in a room with dark wood paneling and a large arched window or doorway.

BIG MOMENTS
BELONG
TO MUSIC



ABOUT US

PHILOSOPHY – WHY WE DO WHAT WE DO

The major works from such celebrated German musicians such as Johann Sebastian Bach, Ludwig von Beethoven and Richard Wagner, to name just a few, owe their popularity and longevity spanning centuries to sheer musical excellence. With the ability and technology to record and listen again to them and many other recordings, music styles and movie soundtracks, quadral's aim is always to produce speakers that give the listener a realistic and life-like experience, but from the comfort of a living room. Our joy comes from your enjoyment. This is what distinguishes quadral loudspeakers from others.

TECHNOLOGY

During development, quadral's goal is to perfect even the minutest of details leaving little to no room for gaps or flaws in our end product, and we look for a balance of suitability and longevity of the materials to be used - an essential criteria in our choice of components during manufacture. This is paramount to us. As a result, our objective should provide you with loudspeakers that work with any of the number of diverse electronics out in the market-place today, and also work effortlessly with all different music genres.

Also in our mid-price range products, technologies still come into play that only quadral has as standard: quadral ribbon tweeter, RiCom tweeter, quadral ALTIMA®, and graphite dusted laminate membranes, pressure chamber reflex enclosures, BTC (bass transform circuitry) and more.

DESIGN

Loudspeakers have a part to play in room design and feel – they're an important element in their own right, with aesthetics and styling that should be capable of fitting in seamlessly with your environment. Therefore, almost all quadral products are also available in a neutral black finish.

In our top of the line series, we also offer a vast choice of personalised colors and real wood finishes for your cabinet enclosure, helping provide the look and feel you desire. We strive for strong and recognisable elements of design in all we do, but at the same time we avoid overly avant-garde lines to purely accentuate innovation. Instead, we look to create loudspeakers that take classic design cues that combine hints and accents of modernity to produce cabinets that can look timeless for years to come. This is further highlighted with only premium materials and very special attention to detail.

SOUND

At quadral, we believe anyone can make 'loud' sounding speakers. Instead we focus on the importance of achieving and developing the highest resolution possible from our loudspeakers regardless of the hardware that you're using – this giving our products maximum compatibility with amplifiers and sound sources. A quadral loudspeaker will provide the very best in listening pleasure – time after time, offering neutrality of sound, precision and definition and our German attention to detail. Although many showrooms are unrealistic of where you'll eventually listen to your loudspeakers, we consciously tune quadral loudspeakers to the acoustic characteristics of typical living spaces; not showrooms. An action we strongly feel makes an added, positive difference. This means we design our products to sound at their absolute finest in a rectangular room space of 15 to 50 square metres, with room height between 2.20 metres and 3 metres; we even take into consideration furniture and furnishing, carpets and/or area rugs.

HISTORY

1972 The beginning

1978 Birth of quadral brand

1981 First TITAN & VULKAN

1992 quadral as a company established

2009 2nd generation of shareholder took over the company

2011 TITAN VIII, 30 years of TITAN, launch AURUM Electronic

AURUM AND QUADRAL – TWO NAMES; ONE DESTINY: PURE QUALITY FOR THE HIGHEST ACOUSTIC PLEASURE

Purchasing a loudspeaker is an exercise that requires diligence and time. Even though precise acoustic audio reviews find us consistently at the top, we constantly continue to work at raising the pleasures of everyday listening through harmony,

depth and clarity. Our loudspeakers gracefully stand out from others, and pleasantly from other electronic devices too, plus you don't dispose of them either after a relatively short life span. Loudspeakers that you've carefully selected, such as these, will soon become true friends - inanimate objects that take on a personality of their own - going on to provide pure listening joy for decades to follow. Our AURUM and quadral loudspeakers are exactly what you have been searching for - a

faithful and reliable companion regardless of the environment they're in, or what you listen to – maybe intently listening to Wagner's Nibelungen or to lounge music as background for your dinner - with AURUM or quadral loudspeakers you will always hit the perfect combination of harmony and that sparkling joy and reward of playing them.



„FROM THE VERY BEGINNING“

E. SEMMELHAACK, GENERAL MANAGER

I was at the first meeting, when quadral was conceptualized. quadral is in my veins and I am a part of quadral's history and successes. It is my duty therefore to uphold and preserve quadral's virtues whilst at the same time overseeing substantial innovations. I am very proud that our AU-RUM series sets standards in the loudspeaker industry for more than 30 years meaning we've consistently offered a top class product all this time. With all my power I support my team to develop the future of quadral – optimum sound quality with outstanding workmanship. No 'ifs' or 'buts'! quadral will always offer products of the highest quality that are marked by an innovative technical aspect, fascinating materials and a timeless elegant design.

Yours faithfully,
Edmond Semmelhaack

AURUM

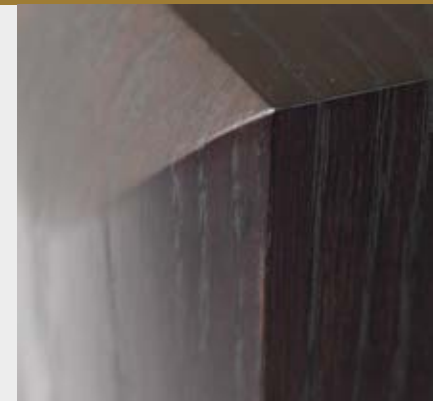
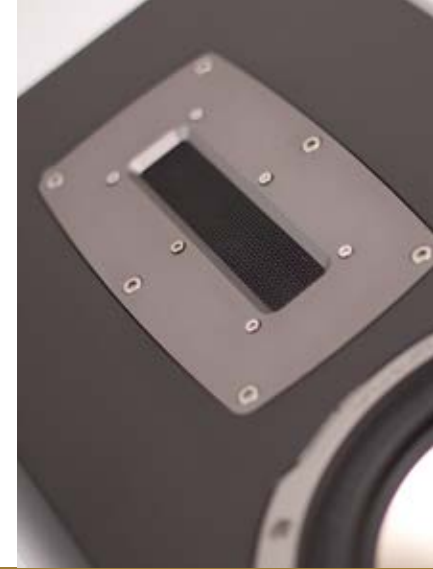
A SYMPHONY OF QUALITY AND TECHNOLOGY

The key to the AURUM world

We develop loudspeakers that offer a level of listening pleasure which deliver emotional profoundness. A valuable concept that we feel can more easily help engage a listener longer, encouraging them deeper into the music. Thanks to modern computer simulation tools and a revolutionary measurement technology, the development of such loudspeakers is more precise than ever as we can more readily optimize magnetic field geometry, improve the radiation of a tweeter or perfect the linearity of membrane travel and movement. The result: loudspeakers are pushed even closer to their physical maximum through technology, yet it's still the human touch that hears the actual music. That is why accurately performed sound comparisons are the most important criteria of evaluation in the development of our AURUM loudspeakers.

AURUM quality

AURUM loudspeakers are handmade in Germany and pass multiple-stage quality checks. Our continuous quality control throughout every step involves every aspect – from monitoring all acoustic parameters to ensuring perfect cabinet construction and finish. The whole journey, from the design, the technology through to production has been meticulously examined and tested, because high-end loudspeakers can only be as good as the sum of their premium quality parts when put together. This accurateness assures you the long-term joy of our AURUM products.



The AURUM ribbon tweeters

AURUM loudspeakers are endowed with sophisticated ribbon tweeters. In our top-models TITAN, VULKAN, BASE TITAN and BASE PRESTIGE VIII R we included the "real" ribbon. A wafer-thin aluminium strip acts as the membrane, which is driven by powerful, very expensive, neodymium magnet rods. Thereby, the speaker membrane follows the signal it is sent, without unwanted inertia. The result: an unrivalled example of finesse and clarity in the sound pattern as well as the best quality with regards linearity.

The smaller AURUM models are also equipped with AURUM quality as standard too, with isodynamic ribbon tweeters for example. With a moving mass almost as low as the real ribbon, these tweeters are the perfect combination of loudspeakers that don't compromise in effort and performance.



"Real" ribbon

isodynamic ribbon

AURUM 
by **quadral** 

GERMAN ENGINEERING ...

The quadral ALTIMA® membranes

In the 'low' and 'mid ranges', AURUM loudspeakers convince with our own unique metal composition known as quadral ALTIMA® membranes. quadral ALTIMA® combines the three light metals - aluminium, titanium and magnesium to produce ideal oscillation behaviour. The result: speed, painstaking accuracy and no intrinsic sound at all.

The pressure chamber / reflex principle

The TITAN, VULKAN, MONTAN, ORKAN and the BASE TITAN utilise a very special design construction in their enclosures: The rear of the membrane works on the principle of bass reflex by volume whilst the front of the membrane, in contrast, works and acts upon the principle of a pressure chamber. This technology derives originally from professional studio monitors and works unprecedented for hi-fi loudspeakers. The combination of a pressure chamber and the reflex principle makes an extensive depth possible combined with the highest precision. At very high levels the bass still stays contoured and sublime.



The crossover

The AURUM models TITAN, VULKAN, BASE TITAN, MONTAN, ORKAN and WOTAN use crossovers that are split in two and are developed with carefully selected high-class materials only. Low resistance and laminated transformer core coils provide a low-loss and low-distortion rendering in the bass.

To achieve subtle and exact pulse overtones we only use exceptionally fast PP-film capacitors as well as low inductive metal coating resistors for tweeters. The circuit switches are especially pleasing to an amplifier, and as such, all AURUM models can even be played with tube amplifiers at peak performance.

With this sophisticated turnout-technology dynamics, as well as three-dimensionality and tonality, these are all characteristics that lean towards the very highest quality, and therefore, music is reproduced close to ideal.

ATTENTION TO DETAIL

Bi-Wiring terminal

Loudspeakers with a bi-wiring terminal provide two connections for the independent delivery of the signal to both tweeter and subwoofer within the enclosure. This bi-wiring option therefore makes it possible to control the tweeter and the subwoofer individually, and, with better control comes more efficiency and better results when using two amplifiers (bi-amping). This method of connection is how you can get the very best results from your loudspeakers. The incorporated level switches for high frequency ranges of VULKAN, BASE TITAN and BASE PRESTIGE are new. With them, you can adapt the high frequency characteristics at three sensitivity levels to suit the real three dimensional properties that your room creates. The TITAN goes one step further, as these offer full control over all three points - not only are high frequency characteristic controllable, but also the 'mid' and 'low' frequency areas too can have their sensitivity levels adjusted to make them fit like a tailor made suit.



TITAN

LEGENDS NEVER DIE

The TITAN creates an awe-inspiring high-end sound stage with unrivalled clarity, captivating presence, beautiful acoustic color fidelity combined with almost unbelievable dynamics and balance creating an unequalled king of loudspeakers. Just like an artist working on their finest piece with their smallest paintbrush – no detail is left out of the TITAN picture.

The impressive acoustic talents of the AURUM TITAN are as a result of hundreds of hours of engineering dedication in perfecting the smallest of details, like the elaborated pressure chamber / reflex enclosure, the refined quadral ALTIMA® membranes of the woofers and midranges, the newly developed ribbon tweeter, the enormously strong drive magnet, the selected elements from the crossover to the internal wiring that uses the fabulous Real Cable®. With the use of state-of-the-art-technologies we commit to our best possible sound quality, combined with the craftsmanship of instrument manufacturing.

SPECIFICATIONS

Type:	AURUM TITAN VIII 3-way
Principle:	Pressure chamber/bass reflex
Nominal/Music Power (W):	300/500
Frequency Response (Hz):	16...65,000
Crossover Frequency (Hz):	250/2,700
Efficiency (dB/1W/1m):	90
For amplifier (Ohm):	4...8
Tweeter:	Aluminium Ribbon
Midrange:	170 mm Ø quadral ALTIMA®
Woofers:	2x260 mm Ø quadral ALTIMA®
Level control:	Low tone ± 2 dB, Middle tone ± 2 dB, High tone ± 2 dB
Dimensions: (HxWxD) in cm:	139 x 31 x 57.85
Weight (kg):	88
Finish:	Natural-oak* Oak-choco* Cherry* Black high gloss White high gloss Individual

* Real wood veneer

TITAN IN THE TEST

Reference category: 101 points
Price/performance: outstanding
AUDIO 11/2011 (GER)

Sound: absolute top class – 63 points
Total evaluation: very good – 85 points
Price/performance: very good
stereoplay 10/2011 (GER)

The 100 best loudspeakers of the world
stereoplay - Sonderheft 01/2012 (GER)

High End Hero
Reference Status
AURUM 5.1 Surround Set comprising:
AURUM TITAN VIII, AURUM MONTAN VIII,
AURUM ORKUS R, AURUM BASE TITAN
HOME CINEMA CHOICE, ISSUE 227, 2013 (UK)

Highly Commended
HiFi News 11/2012 (UK)

more test results: www.quadral.com





VULKAN

IMPULSIVE ENERGY & DYNAMICS

With volcanoes you associate drama, temperament, fire and blaze. Experiencing the AURUM VULKAN gives rise to an expressive display of impulsive energy, like having the best seat at a musical firework extravaganza. Despite their high load capacity of 250/400 watt, they provide impressive, delicately fine-tuned low frequency characteristics, with even the subtlest hints of acoustic nuances and emotion being clearly defined.

Like the TITAN, the VULKAN uses a pressure chamber / reflex construction for the profound, punchy and clear contoured basses. Because of this design and engineering, the woofers work solidly and precisely, especially due to the strong, fast and yet light quadral ALTIMA® membranes. In this way, the original TITAN subwoofer follows the complex signal effortlessly because of its powerful drive and controllable state from this tried and tested ALTIMA membrane.

The new big ribbon tweeter, technically identical with the one in our TITAN, knows how to realize every impulse at high speed. The carefully selected elements on the crossover and the high quality Real Cable® for the internal wiring underline the high standards of quality. As hi-fi stereo or main speaker in a high-end surround system, the VULKAN can live quite happily without the usual need for a stand-alone subwoofer.

SPECIFICATIONS

Type:	AURUM VULKAN VIII R 3-way
Principle:	Pressure Chamber/Bass Reflex
Nominal/Music Power (W):	250/400
Frequency Response (Hz):	20...65,000
Crossover Frequency (Hz):	310/2,900
Efficiency (dB/1W/1m):	90
For amplifier (Ohm):	4...8
Tweeter:	Aluminium Ribbon
Midrange:	170 mm Ø quadral ALTIMA®
Woofers:	2x210 mm Ø quadral ALTIMA®
Level control:	Tweeter ± 2 dB
Dimensions: (HxWxD) in cm:	122 x 28 x 50
Weight (kg):	55
Finish:	Natural Oak* Oak choco* Cherry* Black High Gloss White High Gloss Individual

* Real wood veneer

VULKAN IN THE TEST

1. Place stereoplay HIGHLIGHTS 2014
Column speakers up to 10.000€
stereoplay 04/2014 (GER)

Highly Commended
HiFi News 07/2013 (UK)

Sound quality: 88 percentage
Price/performance: excellent
STEREO 03/2013 (GER)

Highlight
stereoplay 05/2013 (GER)

Very good 94/100
Reference class, Highlight
AURUM 5.2 home cinema set including:
4 x AURUM VULKAN VIII R; 1x AURUM
BASE TITAN, 2 x AURUM ORKUS R
audiovision 02/2014 (GER)

more test results: www.quadral.com





MONTAN

STRENGTH IS TO BE FOUND IN SERENITY

More petite than the TITAN and VULKAN, the AURUM MONTAN steps up, undauntedly into the footsteps of its famous siblings. On the basis of its technological heritage, it too is able to arouse similar emotions.

Like the TITAN and VULKAN, its 26 cm bass with a quadral ALTIMA® membrane plays inside a pressure chamber / reflex construction meaning that bass reproduction is therefore lower, more contoured and distortion free. The midrange speakers are also equipped with a quadral ALTIMA® membrane, which offers extremely fast responses, dynamic abilities and high-precision acoustic coloring. When converting electrical signals into acoustic signals, strong symmetrical magnetic fields guarantee impressive efficiency and therefore this delivers detailed pernickety cleanness.

The light-weight ribbon membrane of the tweeter is driven by very powerful neodymium magnetic rods which react in a flash and offer accuracy in every detail through to every pulse. Additionally, the carefully selected elements of the crossover and wonderful Real Cable® used for internal wiring all add up to making the MONTAN so musical in all areas – for either hi-fi stereo enjoyment or, as part of a very powerful and immersive home cinema solution.

SPECIFICATIONS

Type:	AURUM MONTAN VIII 3-way
Principle:	Pressure Chamber/Bass Reflex
Nominal/Music Power (W):	200/300
Frequency Response (Hz):	25...65,000
Crossover Frequency (Hz):	200/2,600
Efficiency (dB/1W/1m):	89
For amplifier (Ohm):	4...8
Tweeter:	Ribbon
Midrange:	170 mm Ø quadral ALTIMA®
Woofers:	260 mm Ø quadral ALTIMA®
Dimensions: (HxWxD) in cm:	112 x 27 x 44.75
Weight (kg):	40
Finish:	Oak-choco* Black High Gloss White High Gloss Individual

* Real wood veneer

MONTAN IN THE TEST

Audio title: outstanding
95 points
HIGH-END-Class
AUDIO 12/2009 (GER)

fairaudio's favourite
AWARD 2010
Florstanding loudspeaker
www.fairaudio.de 02/2010 (GER)

price category reference
top class floorstander loudspeaker/stereo
areadvd.de 11/2009 (GER)

more test results: www.quadral.com





ORKAN

SPECIFICATIONS

Type:	AURUM ORKAN VIII 3-way
Principle:	Pressure Chamber/Bass Reflex
Nominal/Music Power (W):	160/250
Frequency Response (Hz):	28...65,000
Crossover Frequency (Hz):	330/2,700
Efficiency (dB/1W/1m):	89
For amplifier (Ohm):	4...8
Tweeter:	Ribbon
Midrange:	170 mm Ø quadral ALTIMA®
Woofer:	2x170 mm Ø quadral ALTIMA®
Dimensions: (HxWxD) in cm:	102.2 x 22.2 x 44.75
Weight (kg):	29.5
Finish:	Natrual Oak* Oak choco* Black High Gloss White High Gloss Individual

* Real wood veneer

ORKAN IN THE TEST

Sound quality 96 points
High-End-class
Price/performance: very good
Audio 04/2014 (GER)

Reference
Loudspeakers higher middle class
areadvd.de 18.01.2012 (GER)

Highly Commended
hi-finews 07/2011 (UK)

Highlight
stereoplay 05/2010 (GER)

more test results: www.quadral.com

THE SMALL SOUND GIANT

Those impressed by our AURUM TITAN, VULKAN and MONTAN but have restrictions on space must consider the superb qualities of our premium floor-standing loudspeaker in the form of our AURUM ORKAN. Just like the three bigger models above it, the AURUM ORKAN offers the same sophistication – for example the same combined bass-reflex pressure chamber for rich, clear basses. With its crossover up to 65 kHz it lets DVD Audio and SACD illuminate faster than a heartbeat, and relies on the innovative technology of the amazing quadral ALTIMA® membrane and ribbon tweeter.

Elaborate crossovers with the phenomenal Real-Cable® internal wiring and bi-wiring terminal options with gold connections round-off the technical picture of this jewel of a product.



WOTAN

BEAUTIFUL AND POWERFUL IN SOUND

Of slim stature, the elegance of this loudspeaker stands strong whilst at the same time, musically in a league of one. That is how the AURUM WOTAN commands attention. Three mid-range speakers with our quadral ALTIMA® membrane provide a solid foundation to create astonishing dynamic performance. The flawless picture is one of real strength in-part thanks to the quadral ribbon tweeter.

Sophisticated crossovers, phenomenal Real-Cable® internal wiring and bi-wiring terminal options with gold connections, as well as real wood and piano black enclosure finishes, help perfect the all-round nature of this beautifully designed loudspeaker.



WOTAN IN THE TEST

sound-level: 69%
price/performance: excellent
STEREO 06/2012 (GER)

5/5 Globes
Hi-Fi World 08/2012 (UK)

IF product design award 2010

more test results: www.quadral.com

SPECIFICATIONS

AURUM WOTAN VIII

Type:	3-way
Principle:	Bass Reflex
Nominal/Music Power (W):	120/200
Frequency Response (Hz):	33...65,000
Crossover Frequency (Hz):	330/3,200
Efficiency (dB/1W/1m):	88
For amplifier (Ohm):	4...8
Tweeter:	Ribbon
Midrange:	135 mm Ø quadral ALTIMA®
Woofer:	2x135 mm Ø quadral ALTIMA®
Dimensions: (HxWxD) in cm:	92.1 x 19.4 x 42.75
Weight (kg):	22.6
Finish:	Oak choco* Cherry* Black High Gloss White High Gloss Individual

* Real wood veneer



MEGAN optionally available with the 'G-design' mounting stand

ALTAN

AURUM ALTAN

very good 85/100
price/performance: very good
 AUDIO TEST 02/2010 (GER)

4,5 of 5 stars
 HI-FI CHOICE 10/2011 (UK)

AURUM MEGAN

4 of 5 stars
 HI-FI CHOICE 12/2011(UK)

fairaudio's favourite AWARD 2011
compact loudspeakers
 www.fairaudio.de 08/2010 (GER)

more test results: www.quadral.com

ALTAN MEGAN

SPECIFICATIONS

Type:	AURUM ALTAN VIII 2-way
Principle:	Bass Reflex
Nominal/Music Power (W):	70/120
Frequency Response (Hz):	38...65,000
Crossover Frequency (Hz):	2,400
Efficiency (dB/1W/1m):	87
For amplifier (Ohm):	4...8
Tweeter:	Ribbon
Midrange:	170 mm Ø quadral ALTIMA®
Woofer:	40.5 x 22.2 x 34.55
Dimensions: (HxWxD) in cm:	12.6
Weight (kg):	Oak choco*
Finish:	Black High Gloss White High Gloss Individual**

* Real wood veneer

** individual lacquer only in combination with column speakers

IN THE TEST

AURUM MEGAN VIII 2-way
Bass Reflex
60/100
44...65,000
3,000
86
4...8
Ribbon
135 mm Ø quadral ALTIMA®
35.7 x 19.4 x 29.05
9
Natural Oak *
Oak choco*
Cherry*
Black High Gloss
White High Gloss
Individual**

COMPACT – ADULT

Close your eyes and let yourself be seduced. The AURUM ALTAN surprises, giving the feeling of a floor-standing speaker in terms of the sound volume created and the presence, whilst being generated via the dimensions of a relatively compact speaker. The 17cm woofer, with its spotless clean rendering in the mid-ranges also steps down with ease when bass is called for but, keeps firm control and order of all the musical elements in play.

A slightly smaller version of the ALTAN, but no less impressive, is our AURUM MEGAN. Offering clean and tight bass, open velvety mid-range and sparkling clear highs will let the heart of their owner beat faster. Here, finest craftsmanship and musical finesse converge.



ORKUS

THE POWER IN THE UNDERGROUND

Watching your favourite movie is one thing – listening to it and feeling it is another story altogether. You want the lowest tones of an organ or a string bass, not only to experience the lows created, but to dive into the acoustic depths of these instruments and virtually touch them, feel them, be next to them. If this emotion, like us, is one you want to be a part of, then the AURUM ORKUS is exactly what you long for.

The long-stroke speaker design, accommodating an impressive 32cm high quality woofer with full 500 watt power amplifier provides bass notes of pure 'crafted violence' right down to the lowest octaves. Menacing presence with controlled perfection - unabridged explosions, punch or subtle bass mists – that's how a movie becomes a gripping event. We would not be AURUM if we did not also pay the highest of attention to musical purity.

Our carefully developed sub-woofer enclosure and tuning, combined with the low-loss woofer itself, provides the most detailed precision of even the softest and quietest tones. Best of all for many, this awesome beast maintains a compact form and displays elegant looks too.



SPECIFICATIONS

	AURUM ORKUS R
Type:	Active subwoofer
Principle:	Bass Reflex, downfire
Nominal/Music Power (W):	500/600
Frequency Response (Hz):	20...200
Crossover Frequency (Hz):	50...200
Input Sensitivity (mV):	250
Stand-by-circuit:	yes, power saving
Phase:	0...180° switchable
Woofer:	320 mm Ø
Dimensions (HxWxD) in cm:	47.3 x 40 x 50
Supply voltage (V)	115/230 ~ reversible
Weight (kg):	32.5
Finish:	Black High Gloss White High Gloss



PHASE PRESTIGE

INSPIRATIONAL SOUND...

...from all sides

PHASE PRESTIGE is perhaps the ideal loudspeaker for your home cinema solution. With its flat shaped design and rotatable tweeter and a swivelling suspension, it adapts perfectly to demanding requirements.

The PHASE PRESTIGE is a purebred wall / ceiling speaker for high quality surround and DOLBY ATMOS® installations. Their rich sound paired with unique clarity – which can only be provided by the ribbon tweeter – elevates your home cinema to a completely new dimension.

PHASE



DESCREETLY PARAMOUNT

Significantly more dainty than the PHASE PRESTIGE, is the PHASE. As size goes, it will still surprise how effortlessly it impresses you. A quadral ALTIMA® chassis marries perfectly with the ribbon tweeter – a proven winning combination used throughout much of our AURUM loudspeaker series.

PHASE is multi-functional – as a ceiling, wall and also as a center speaker. The swivelling suspension helps optimize the positioning and helps provide the absolute best sound for all seating positions.

SPECIFICATIONS

Type:

Principle:

Nominal/Music Power (W):

Frequency Response (Hz):

Crossover Frequency (Hz):

Efficiency (dB/1W/1m):

For amplifier (Ohm):

Tweeter:

Midrange:

Woofers:

Dimensions: (HxWxD) in cm:

Weight (kg):

Finish:

AURUM PHASE PRESTIGE VIII

2-way

closed

160/250

40...65,000

250/3,000

88

4...8

Ribbon

170 mm Ø quadral ALTIMA®

170 mm Ø quadral ALTIMA®

56 x 30 x 15.3

ca. 12

Black High Gloss

White High Gloss

AURUM PHASE VIII

2-way

Closed

120/200

55...65,000

3,500

86

4...8

Ribbon

2x135 mm Ø quadral ALTIMA®

48 x 25 x 14.3

8.5

Black High Gloss

White High Gloss

BASE TITAN



FILM FESTIVAL WITH AURUM

You want the very best home cinema, without any compromise. Be seduced by this excellent masterpiece in the form of the BASE TITAN – the ultimate center speaker, or front speakers. Developed from the award winning lineage of the TITAN range, the BASE TITAN has been purposefully engineered to offer all the facets of the full-sized TITAN floor-stander, but in an array that permits multiple uses. The fascinating heritage helps the BASE TITAN produce a huge sound stage, ultimate clarity and strength – yet with an ability to be delicate and gentle when required too. This center loudspeaker has got it all. Equipped with the original TITAN chassis and the sophisticated crossover with carefully selected components – you get what you deserve – the very best!

And when using the BASE TITAN as front loudspeakers, or front and center; they leave no question unanswered. It is the culmination of years of engineering that bring uncompromising home cinema to life with levels of performance that's unmatched.

BASE PRESTIGE



UNEXPECTED HIGHS

Every spoken word, every sound – this center loudspeaker is going to bewitch you. Dialogs can be experienced with an intensity that is rarely achieved. Here technology slides into the background as the excitement of sound takes over. It is obvious that this is only possible with a special type of technical finesse. We based the foundation upon the TITAN'S outstanding tweeter and an ingenious crossover with time alignment.

With the BASE PRESTIGE your home cinema becomes an unforgettable experience.

BASE



CENTER-PIECE

Those who want to enjoy a fine home cinema system at the highest possible level of craftsmanship and acoustic ability will choose the AURUM BASE. With the same tweeter as the models ALTAN, MEGAN, WOTAN and ORKAN this center loudspeaker fits in perfectly into the overall sound rendering picture, providing the ultimate marriage between center and main loudspeakers left and right, thanks in particular to the sophisticated soft circuit with time alignment. Like all AURUM models, the AURUM BASE is equipped with quadral ALTIMA® membranes. We recommend the BASE also as a high-end supplement for high quality 5-channel enjoyment.

SPECIFICATIONS

	AURUM BASE TITAN	AURUM BASE PRESTIGE VIII R	AURUM BASE VIII
Type:	3-way	3-way	3-way
Principle:	Pressure chamber/bass reflex	Bass Reflex	Closed
Nominal/Music Power (W):	300/500	140/220	120/200
Frequency Response(Hz):	25...65,000	30...65,000	33...65,000
Crossover Frequency (Hz):	260/3,000	150/2,800	500/2,600
Efficiency (dB/1W/1m):	90	88	87
For Amplifier (Ohm):	4...8	4...8	4...8
Tweeter:	Aluminium Ribbon	Aluminium Ribbon	Ribbon
Midrange:	170 mm Ø quadral ALTIMA®	170 mm Ø quadral ALTIMA®	135 mm Ø quadral ALTIMA®
Woofer:	2x260 mm Ø quadral ALTIMA®	170 mm Ø quadral ALTIMA®	135 mm Ø quadral ALTIMA®
Level Control:	High tone ± 2 dB	High tone ± 2 dB	17.85 x 48 x 24.7
Dimensions (HxWxD) in cm:	38.5 x 80 x 43.75	21.5 x 60 x 38.45	10.4
Weight (kg):	49.50	17.85	Black High Gloss
Finish:	Black High Gloss	Black High Gloss	White High Gloss
		White High Gloss	Individual**
		Individual**	



„FASCINATING
OPPORTUNITIES“

S. RECKERT, HEAD OF DEVELOPMENT

Technology for music rendering should never end in itself. Therefore, my motto is: As much engineer as needed and as much artist as possible.

To balance these characteristics in the development of our loudspeakers is the 'red thread' that keeps us always on track in every one of our projects. Opposed requirements and physical snares keep me challenged as a developer. With a high-end series, like the AURUM it is a great pleasure for me to draw on the full for your pleasure of music.

AURUM AKTIV

BEAUTIFUL NEW ACTIVE WORLD – HANDMADE IN GERMANY

The technology

To linearize the frequency response of a passive loudspeaker you can use a crossover to lower frequency ranges in the level. On the other hand, with active loudspeakers you can perform elevations in frequency ranges. With only the smallest amount of effort any filter or equalizer can be used, and in combination with the built-in amplifier, each driver (tweeter, mid and woofer) gets direct signal input. In this way, it is possible to realize that all speakers can be tuned precisely, and because of the filters there are no losses. That is how the active speaker plays with a lot more ease and is more dynamic with the same amplifier power.

Another advantage of our active loudspeakers that we skillfully developed, enables users to make small and very fine sound adjustments. Because of this, you can either help eliminate problems caused by the uniqueness of space, or adapt the sound itself to your favorite music and nuances.

The panel

A switchable 'high-pass' option enables the listener to choose between an extended deep bass or a higher maximum level output via a switchable setting. Furthermore, a higher cut-off frequency can help to decrease strong room resonances under 50 Hz.

Our introduced circuitry here also acts as a type of subsonic filter – and leads to reduced woofer travel and movement. It works in a way that means very deep frequencies are not directed to the speaker in order to stabilize them mechanically at very high levels.

The combination of a fixed bandwidth of 1/3 octaves and the switchable frequency and levels helps to set room corrections or to set individual sound modulation. These properties together along with the switchable 'high-pass' offers ingenious solutions for even the trickiest and demanding of installations.



ORKAN AKTIV



A STORM WITH 320 WATTS

By now almost every D/A converter and every streaming device provides a high quality, adjustable output. What could be more natural than to expand one of our most solid products of the AURUM series to become 'fully active'? To successfully master our own claims we put the wheels in motion – bass, mid and highs got their own amplifier which are cleanly filtered by the high-end pre-amplifier and are even adjustable. To satisfy the enormous performance requirements in the bass and the basic range, ultra-modern class-D amplifiers were used.

For the outstanding nature, behavior and clarity of the typical AURUM ribbon tweeter, a specifically developed analogue amplifier also got put in to action. To exploit the advantages of the lossless coupling with the amplifier, this ORKAN AKTIV utilizes the same outstanding mid-range just like that of the AURUM TITAN VIII. With the combination of its extremely strong magnet and the high power amplifier this mid-range plays in its own league. Superb dynamics coupled with an unbelievable desire for exquisitely detailed resolution of the mid-ranges and is matched superbly by the long-stroke, low-distortion woofer and the brilliant ribbon tweeter. In extensive listening sessions these outstanding details of technological mastery bring all facets of this loudspeaker together as one.

ALTAN AKTIV



CONCENTRATING ENERGY

With the AURUM ALTAN AKTIV a new star is born among compact speakers – stylish, manufactured to the highest of qualities and equipped with top class technology. It cuts the mustard of the audiophile heart.

Thanks to the active electronics with rich 200 watt power and the sophisticated pre-amplifier, the ALTAN AKTIV combines the advantages of smaller 2-way loudspeakers with the frequency range and presence of adult floor-standers. Those who have listened to this loudspeaker can never let go. With deep, controlled bass; dynamic, uncolored mids and fantastic staging and brilliant highs, all combine with the ALTAN AKTIV in an unforgettable way.

Besides the integrated amplifier technology, the tried and tested AURUM components contribute their fair share to the overall success – the quadral ALTIMA® membrane in the woofer for naturalness and dynamics and the ribbon tweeter with its incomparable ability to work out even the finest details of music.



TITAN midrange
used in ORKAN/ALTAN Aktiv

SPECIFICATIONS

	AURUM ORKAN Aktiv	AURUM ALTAN Aktiv
Input Impedance (XLR)	47 kOhm	47 kOhm
Input Sensitivity (XLR)	100 mV/87 dB SPL	100 mV/85 dB SPL
Input Impedance (line)	33 kOhm	33 kOhm
Input Sensitivity (line)	100 mV/87 dB SPL	100mV/85 dB SPL
Max. Input volt. (XLR/ RCA)	6 V/6 V	6 V/6 V
Output power (total)	320 W (3 output stages)	200 W (2 output stages)
Total harmonic distortions (clirr)	<0.05%	<0.05%
Frequency Response	28 Hz - 65,000 Hz	38 Hz - 65,000 Hz
Input		
Unsymmetrical (unbalanced)	1x RCA	1x RCA
Symmetrical (balanced)	1x XLR	1x XLR
Circuit protection:	Temperature, overcharch.	Temperature, overcharch.
Auto off (standby):	15 minutes without signal	15 minutes without signal
Principle	Pressure Chamber/Bass Reflex	Bass Reflex
Woofers	2 x 170 mm Ø quadral ALTIMA®	1 x 170 mm Ø quadral ALTIMA®
Midrange	1 x 170 mm Ø quadral ALTIMA®	–
High Frequency	Ribbon	Ribbon
Mains Connection	100 V/115 V ~60 Hz, 230 V ~50 Hz	100V/115V ~60Hz, 230V ~50Hz
Power Input standard	14.3 W	10.6 W
Power Input full power	350 W	280 W
Power Input standby	<0.2 W	<0,2 W
Dimensions (HxWxD)	102.2 x 22.2 x 44.8 cm	40.5 x 22.2 x 34.5 cm
Weight	32.6 kg	14.7 kg
Finish	Black High Gloss White High Gloss Individual	Black High Gloss White High Gloss Individual

AURUM AKTIV IN THE TEST

AURUM ORKAN Aktiv

5 of 5 Globes
"Outstanding – amongst the best"
Hi-Fi World 11/2013 (UK)

Highlight
stereoplay 10/2013 (GER)

AURUM ALTAN Aktiv

1. Place readers choice AUDIO Golden Ear
Compact loudspeakers over 2.000€
AUDIO 04/2014 (GER)

fairaudio's favourite AWARD 2014
active compact loudspeakers
www.fairaudio.de 12/2013 (GER)

Highly Commended „Homogenous Image“
sound quality: 89 points
price/performance: very good
AUDIO 09/2013 (GER)

More test results:
www.quadral.com



„OUR GOAL?
TO BE BETTER!“

S. EISENHARDT, SALES MANAGER

Your wishes and needs in terms of your pleasure for experiencing music are at the forefront of our actions and decisions. Therefore, it is very important to us that all kinds of music should be as equally impressive regardless of the quadral – AURUM loudspeaker you choose.

As the aesthetic requirements of loudspeakers have increased during the past years, our sales team works together closely with our design team and engineering team. Only like this is it possible to form a symbiosis of timeless, elegant design paired with the fascinating sound experience of our AURUM products.

Music enriches our lives, AURUM enriches music.

AURUM ELECTRONIC



GOING TO OBSESSIVE LENGTHS - HANDMADE IN GERMANY

Pre-amplifier technology

The sum of extremely high quality component parts makes AURUM products something very special. For the input stages only BI-FET operational amplifiers are used. With the very short signal paths of the pre and power amplifier we use capacitors with a 'no-loss' design ethos - only high quality polypropylene film capacitors are used, made in Germany. When put together, they are your guarantee for low-distortion and low-loss transmission and a distinctively more dynamic musical picture.

Power amplifier technology

The discreetly installed power amplifier provides a nearly perfect musical picture. This complex but effective way of power amplification combined with passive output filters allows a free-of-distortion rendering with an extremely wide frequency range. Exceptionally long lasting power transistors from a well-respected manufacturer are also used - with high impulses as well as vacuum sealed output relays, they've been designed to provide a long lasting relationship with your AURUM amplifier.

Power supply

The standby eco power supply of the AURUM product amplifier series works with a power consumption of less than 0.9 watt. The specifically developed transformers minimize the electromagnetic field of the power supply. Because of this, the power amplifier can work free from interference and all AURUM amplifiers therefore offer a typical, identical and fascinating sound.

Special filters avoid distortion and humming noises of the toroidal-transformer. Five individual load capacitors per channel, with a specifically developed switch assure a fast current delivery. That is how AURUM full and power amplifier rule supreme, even with faster and higher impulses.

CD players

Digital-technology: With a complex technical method, the laser unit of the CD player is syndicated and guided automatically. The AURUM developers use only a Burr Brown D/A converter with 24 bit/192 kHz for the AURUM CD players.

Analogue technology: To design the sound behavior of the AURUM CD player at the highest level, a series of filters are installed. For the audio branches also Bi-FET operational amplifiers and polypropylene film capacitors are integrated. Furthermore, an extremely strong, but low-noise drive motor is integrated in the player.

A black and white photograph of an Aurum M10 amplifier. The unit is a rack-mounted component with a silver faceplate. The brand name 'AURUM' is visible on the top edge. A digital display in the center shows '0 0.5'. The background is dark and out of focus, showing other components of a stereo system.

AURUM M10

POWER IN ITS PUREST EDITION

Rich power on-tap and impressionable pleasure in the playing – these are the outstanding characteristics of the new AURUM M10. The strong split-channel structure, an extremely strong power supply and of course the finest selection of all electronic components makes the AURUM M10 a truly harmonic power amplifier. The range topping model of the AURUM series can be used both in stereo and mono; in mono, more than 1,000 watt at 4 ohm is achievable. Breathtaking musical detail to the finest degree – the M10 is scintillating, powerful and pure; with naturalness and a never ending desire to keep on delivering for you, this is what 'world-class' should resemble.

With the AURUM M10 you control the power of hungry loudspeakers like TITAN and VULKAN with ease, and can extract every last drop of their fine dynamics. The M10 offers versatile connectivity and includes switchable input sensitivity, bi-wiring terminals and optional RCA or XLR-inputs. The AURUM M10 is the next step to audiophile perfection. The supreme characteristics of this power amplifier can easily keep up with other brands displaying much higher price tags.

SPECIFICATIONS

Output Power an 8 Ohm

Output Power an 4 Ohm

Input Sensitivity for 1W

Frequency Response

Harmonic Distortion

Sinal to Noise Ratio A-rated

Mains Connections

Power Input standby

Input

Dimensions (HxWxD)

With wooden side pannels, feet and
Speaker terminal

Weight

Finish

AURUM M10

2x 240W/1x 650W

2x 400W/1x 1,000W

-26 dBV an 4 Ohm

1Hz-80kHz(-3dB)

<0.03%

79 dB

115V/230V reversible

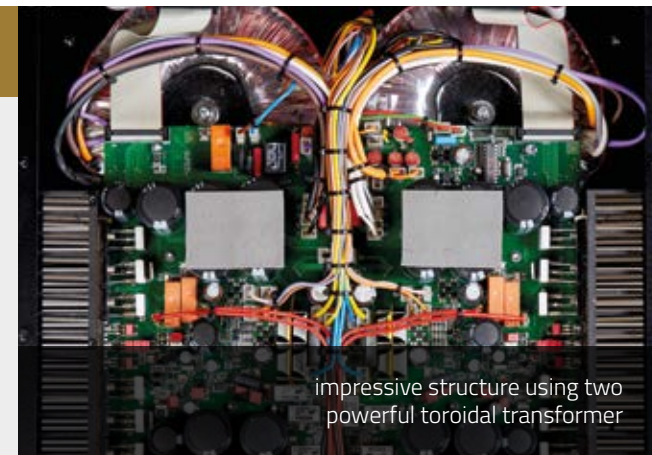
<0.3W

2 pair cinch, 1 pair XLR symmetrical

45.3 x 13.0 x 40.0 cm

21.5 kg

Black High Gloss



impressive structure using two
powerful toroidal transformer



high-class connectors offering
versatile settings



AURUM P8/M8

INSISTING ON PLEASURE

AURUM P8

sound-level 80%
price/ performance: excellent
STEREO 11/2013 (GER)

AURUM M8

sound-level 80%
price/ performance: excellent
STEREO 11/2013 (GER)

more test results:
www.quadral.com

Pre-amplifier P8

The AURUM P8 sets standards according to sound, equipment and the ease of use. A special highlight is the discreetly buffered digital section, elevating every digital source enormously. Also, on the analog side the pre-amplifier, lovers of vinyl will enjoy the integrated phono amplifier of the utmost quality while the bypass function allows for a perfect integration into home cinema set-ups.



WELCOME THE M8 MONARCH

Mono/stereo power amplifier M8

The M8 is a thoroughbred power amplifier with the attention to detail that you've come to expect from ourselves. It has immense transparency, unrestricted musical sensitivity and is a yet another class leader by right. Finesse aside, this M8 amplifier is no slouch – providing so much power and control that even at heart-stopping levels it will still continue to illuminate with ease. Even extremely ambitious loudspeakers find their ruler in the M8; and not just because this two channel amplifier can be used as a pure mono amplifier with only one switch. The two amplifier units are separated completely to avoid mutual interference. The whole signal processing works fully balanced. That is how the musical signal stays put, even with the widest of influences. This monarchy will rule for many years to come.

Inputimp./-sensitivity XLR, line
Signal to noise ratio . XLR/line A-rat.
Input Sensitivity./- phono MM
Signal to Noise Ratio. phono MM A-rat.
Voltage gain line
Outputimp./max. -voltage XLR/cinch
Control range volume
Control range balance/height/bass
Frequency Response
Harmonic Distortions
Mains Connections/input standby
Analog Input

Digital Input

Output

Dimensions (H x W x D)

with wooden side pannels, feet and connectors

Weight

Finish

AURUM P8

47kOhm/100mV

94dB/94dB

47kOhm/2.6mV

90dB

45dB

3000hm/15V/6000hm/8V

99dB

±6dB

1Hz-110kHz (-3dB)

<0.03%

115/230V switchable./<0.5W

4 pair cinch, 2 pair XLR symmetrical,

1 pair phono-cinch

(24bit/192kHz) 1x optical, 1x coaxial,

1x USB/Typ B (48kHz)

1 pair cinch, 2 pair XLR symmetrical

453 x 82 x 330 mm

5.31 kg

Black High Gloss

SPECIFICATIONS

AURUM M8

2x 120W/1x 240W

2x 200W/1x 350W

-26 dBV an 4 Ohm

1Hz-110kHz(-3dB)

<0.03%

85 dB

115V/230V switchable

<0,5W

2 pair cinch, 1 pair XLR symmetrical

45.3 x 13.0 x 34.5 cm

Output Power an 8 Ohm

Output Power an 4 Ohm

Input Sensitivity for 1W

Frequency Response

Harmonic Distortion

Sinal to Noise Ratio A-rated

Mains Connections

Power Input standby

Input

Dimensions (HxWxD)

With wooden side pannels, feet and

Speaker terminal

Weight

Finish

13.79 kg

Black High Gloss



AURUM A5/C5 DA

REFERENCE AMPLIFIER A5

AURUM A5/C5

sound-level 76% C5
sound-level 82% A5
price/ performance: excellent
STEREO 09/2011 (GER)

reference
Stereo-components top class
areadvd.de 11.07.2012 (GER)

AURUM C5

5 of 5 Globes
Hi-Fi World (UK) 01/2012

AURUM A5

Outstanding 92,5/100
price/performance: Outstanding
AUDIO TEST 03/2012 (GER)

4 of 5 Globes
Hi-Fi World 09/2011 (UK)

more test results:
www.quadral.com

2 x 1 = A5. This is the formula for our passion for music in its purest form - based on double mono architecture with separated current supplies, signal processing as well as amplification. We outbid the whole spectrum of technical and scientific knowledge of circuit technology with our integrated high-end amplifier so you can enjoy an extraordinary level of listening pleasure. The ability for us to create a powerful reference amplifier that delivers such fabulous dynamics and both a rangy and finely detailed sound reproduction is paramount to our beliefs and objectives.



C5 REFERENCE CD PLAYER

Due to its uncompromising architecture, our C5 reference CD player provides the bits & bytes of a CD to reach their true potential totally unclouded.

An undocked drive surrounded with sophisticated vibration dampers is just one of many technical highlights helping to make this a true reference class player. As true a reproduction to you actually being there when originally recording or performing is another testimony to the abilities of the C5 player. For the optimum connection, choose the A5 reference amplifier with two fully symmetrical XLR connectors.

Analog Output asymmetrical OdBr
Signal to Noise Ratio - unrated
Harmonic Distortions
Frequency Response
Digital Input*
Digital Output
Mains Connections
Input standby
Outputs

Digital Inputs
Dimensions (HxWxD)
 with wooden side pannels, feet and connectors
Weight
Finish

AURUM C5 DA
 2.0V
 Cinch -92dB/XLR -98db
 <0.005%
 1Hz-22kHz(-3dB)
 Cinch, SPDIF
 Cinch, SPDIF
 115V/230V switchable
 <0.5W
 1 pair analog cinch,
 1x coaxial digital
 1 pair XLR symmetrical
 1x coaxial digital
 45.3 x 8.2 x 30.5 cm
 6.80 kg
 Black High Gloss
 Natural Oak
 Oak choco

SPECIFICATIONS

Output Power an 8 Ohm
Output Power an 4 Ohm
Input Sensitivity for 1W
Frequency Response
Harmonic Distortions
Signal to Noise Ratio A-rated
Mains Connections
Power Input standby
Input
Dimensions (HxWxD)
 With wooden side pannels, feet and
 Speaker terminals
Weight
Finish

AURUM A5
 100W
 150W
 -16.3 dBV an 8 Ohm
 1Hz-110kHz(-3dB)
 <0.03%
 75 dB unrated
 115V/230V reversible
 <0.9W
 8 pair cinch, 1 pair XLR symmetrical
 45.3 x 13.0 x 34.5 cm
 13.30 kg
 Black High Gloss
 Natural Oak
 Oak choco



PLATINUM M



Pressure chamber of the PLATINUM M50 with two powerful woofers



M – LIKE MASTERPIECE

quadral's PLATINUM M family marks the unique harmony of an exquisite loudspeaker technique with the combination of perfect craftsmanship and carefully selected components that merge into one real masterpiece. Besides the high quality of the Real Cable® internal wiring the column loudspeakers include a pressure chamber, that provides rousing low tones. Low-vibrating cabinets are lavishly lacquered in a high gloss varnish and hand-polished. Big drive magnets and aluminium cones with an ingenious geometry inspire the perception of exciting bass runs and exhilarated flawless midranges. And to top it all, quadral's ring radiator RiCom V tweeter.

No longer are perfect room acoustics required to recreate the concert atmosphere or cinematic experience of a lifetime in your own living room. PLATINUM M takes care of that. Whether it's analogue hi-fi stereo or digital surround-sound, PLATINUM M becomes the heart of your home and your perfect acoustic companion through the concert or through the movie. For home cinema use we recommend our QUBE 12 active subwoofer.

white
high gloss

black
high gloss

PLATINUM M IN THE TEST

audiovision HIGHLIGHT
PLATINUM M50, M25, M10 BASE,
QUBE 12 active
REFERENCE CLASS
AV-Valuation
audiovision 01/2013 (GER)

stereoplay HIGHLIGHT, Very Good
PLATINUM M50 compared to 5
other floor standing loudspeakers
(5x good-very good, 1x very good)
stereoplay 03/2014 (GER)

AUDIO RECOMMENDATION
PLATINUM M40
valuation of sound: 90 points
price/performance: outstanding
AUDIO 12/2013 (GER)

VIDEO Testsieger
PLATINUM M40
In the Test: 4 floorstanders
Test reviews: 4x good
VIDEO 02/2013 (GER)



Hi-Fi World Awards 2013
„Best Loudspeaker“
PLATINUM M50
HI-FI WORLD 01/2014 (UK)



AUDIO reader's choice 2014
PLATINUM M40 (GER)

audiovision PRICE TIP
PLATINUM M35, M20, M10 BASE,
QUBE 10 active
audiovision 11/2014 (GER)

HI-FI-WORLD
PLATINUM M50
5 of 5 Globes
STATEMENT: "OUTSTANDING
– simply the best"
08/2013 (UK)

AUDIO TEST
PLATINUM M40
Very Good
89 of 100 points
AUDIO TEST 03/2013 (GER)

av-magazin.de
PLATINUM M40
Top Class
price/performance: very good
av-magazin.de 08/2013 (GER)



Bi-Wiring-Terminal Area with an elaborated cable bridge



SPECIFICATIONS

RiCom V-Tweeter

The combination of the small, light titanium membrane with the very powerful, ring-shaped neodymium magnet preserves the fine nuances of all overtones while broadening the frequency range to 50 kHz — ideal for Blu-ray, SACD and DVD audio.

Quotation of STEREO 1/11, PLATINUM M3 about the RiCom-M (predecessor RiCom V):

“... The high frequency range comes beading, never disturbing or ever sharp, nevertheless, with a fine detailed resolution. It reacts extremely fast and is convincing in both gross- and fine dynamic. Even more expensive components can look up to it.”



PLATINUM M

Type:

Principle:

Nom./music power (W):

Frequency response (Hz):

Crossover frequency (Hz):

Efficiency (dB/1W/1m):

Impedance (Ω):

Speaker

Tweeter:

Midrange:

Woofers:

Dimensions (HxWxD) in cm:

Weight (kg):

Finish:

*Dimension with base plate



M 50

3-way
pressure chamber/ bass reflex
200/300
23...50,000
280/2,300
90
4...8
RiCom-V
2 x 135 mm Ø aluminium
2 x 180 mm Ø aluminium
112.7* x 23 x 31.9
28.3
black high gloss
white high gloss

white front cover optional

M 40

3-way
pressure chamber/ bass reflex
160/240
28...50,000
320/2,450
89
4...8
RiCom-V
135 mm Ø aluminium
2 x 170 mm Ø aluminium
100.4* x 21 x 31.75
22.4
black high gloss
white high gloss

white front cover optional

M 35

3-way
bass reflex
120/180
33...50,000
400/2,500
87
4...8
RiCom-V
135 mm Ø aluminium
135 mm Ø aluminium
90* x 17 x 25.35
14.4
black high gloss
white high gloss

white front cover optional

M 25

2-way
bass reflex
90/130
38...50,000
2,100
86
4...8
RiCom-V
-
170 mm Ø aluminium
36 x 19.5 x 29.95
7.7
black high gloss
white high gloss

white front cover & the DESIGN STATIV G optional

M 20

2-way
bass reflex
60/90
40...50,000
2,150
86
4...8
RiCom-V
-
135 mm Ø aluminium
32 x 18 x 22.95
5.8
black high gloss
white high gloss

white front cover & the DESIGN STATIV G optional

M 10 BASE

3-way
closed
120/180
35...50,000
350/2,300
86
4...8
RiCom-V
135 mm Ø aluminium
135 mm Ø aluminium
16 x 55 x 24.95
9.2
black high gloss
white high gloss

white front cover optional



RIBBON
TWEETER



CHROMIUM STYLE





Curved cabinet lines
with a noble high gloss varnish



Metal-Terminal
with gold-plated connections



SOUND WITH STYLE

CHROMIUM STYLE unites form and function in to an incredibly convincing sound experience. The elegant cabinet fulfils highest design standards and their rounded sides reduce sound divergence through the sound conduction. Hand-polished high gloss varnishes complete the noble overall impression, turning a 'loudspeaker' into a premium ornament in your living room.

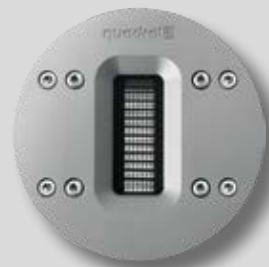
Technically the CHROMIUM STYLE is also convincing. The sophisticated ribbon tweeter stands out for crystal clear heights. Titanium coated polypropylene diaphragms provide the highest linearity and a high-fidelity sound.

CHROMIUM STYLE reproduces music and surround-sound with the most maximum of dynamics. Thanks to the bass reflex tubes with trumpet flanging, even deep movie grumble is displayed with ease. The outstandingly detailed manufacturing finds its finish in a diligent gold-plated connection terminal, so that high-end lovers will also have fun with this series.

white
high gloss

black
high gloss

RIBBON TWEETER



The new ribbon tweeter, which was explicitly developed for the CHROMIUM STYLE, stands out for its lowest distortion and a fascinating fine resolution. This is the result of intensive development work. quadral engineers combined a sophisticated 'folding' design in the diaphragm with an extremely strong neodymium magnet and an exchanger with a high-current sintered ferrite core. The result leaves no questions unanswered and the CHROMIUM STYLE becomes a true highlight.



SPECIFICATIONS

CHROMIUM STYLE

Type:

Principle:

Nom./music power (W):

Frequency response (Hz):

Crossover frequency (Hz):

Efficiency (dB/1W/1m):

Impedance (Ω):

Speaker

Tweeter:

Midrange:

Woofers:

Dimensions (HxWxD) in cm:

Weight (kg):

Finish:



STYLE 8

3-way
bass reflex
140/200
32...55,000
340/3,400
89
4...8
aluminium ribbon
155 mm Ø titanium-PP
2 x 180 mm Ø titanium-PP
100.6* x 20.85 x 34.35

22.14
black high gloss
white high gloss

* Dimension with base plate

STYLE 6

2-way
bass reflex
110/170
35...55,000
3,400
88
4...8
aluminium ribbon
2 x 155 mm Ø titanium-PP
(midrange-/woofer)
90 x 16.85 x 28.35
base plate: 1.8 x 19.85 x 27

13.24
black high gloss
white high gloss

STYLE 2

2-way
bass reflex
60/90
48...55,000
3,400
86
4...8
aluminium ribbon
155 mm Ø titanium-PP
(midrange-/woofer)
30.9 x 17.65 x 26.85

5.7
black high gloss
white high gloss

DESIGN STATIV G optional

STYLE 1 BASE

3-way
closed
100/150
55...55,000
300/3,400
86
4...8
aluminium ribbon
155 mm Ø titanium-PP
155 mm Ø titanium-PP
15.63 x 48 x 26.85

7.6
black high gloss
white high gloss





RHODIUM



Height-adjustable spikes
of chromed aluminium



fully covered
with fabric and varnished surface



SO SMALL, SO POWERFUL

Petite, linear, puristic – the new RHODIUM Series surprises and wins over eyes and ears. Despite the compact dimensions, the loudspeakers of this series offer a voluminous soundstage through the combination of a titanium coated diaphragm with a forefront bass reflex port. The 25 mm aluminium dome provides a first class sound in high frequency ranges. The result: an all-round speaker that is perfectly suited for both stereo and surround setup. Furthermore, the shapely RHODIUM cabinet can be easily adapted and considered for every kind of living environment. The silk gloss finish – available in black or white – is

again a testimony to our technical mastery in the build process. A magnetic front panel lies on the entire forefront of the loudspeakers like a thin scarf. Chromed spikes, adjustable in height complete the noble appearance and improve the sound experience with the acoustic decoupling.

THE RHODIUM Series includes two column loudspeakers, one shelf speaker and one centre. All models are made with a high-quality metal terminal connections.

white
silk gloss

black
silk gloss

RHODIUM IN THE TEST QUBE 8 - GOING DEEP

HEIMKINO OUTSTANDING
RHODIUM 500, RHODIUM 200,
RHODIUM 100 BASE, QUBE 7
TEST RESULT OUTSTANDING 1,1
top class
Heimkino 6/7-2015 (GER)

AREA DVD OUTSTANDING
RHODIUM 500
Floorstanding loudspeakers
until 800 EUR/each
areadvd, May 6th 2015 (GER)

AREA DVD EXCELLENT
RHODIUM 400
Floorstanding loudspeakers
until 500 EUR/each
areadvd, May 6th 2015 (GER)



Due to its small dimensions and its elegant design the RHODIUM is perfectly qualified as the surround-solution for your living room. Matching to it, we now offer the subwoofer QUBE 8, also in a silk gloss finish. The sound of this combination will amaze you.

More information about our subwoofer on page 63.

शुभदत्तवाक्य

SPECIFICATIONS

RHODIUM

Type:

Principle:

Nom./music power (W):

Frequency response (Hz):

Crossover frequency (Hz):

Efficiency (dB/1W/1m):

Impedance (Ω):

Speaker

Tweeter:

Midrange/Woofer:

Dimensions (HxWxD) in cm:

Weight (kg):

Finish:



500

400

200

100 BASE

2-way
bass reflex
100/150
35...38,000
2,500
87
4...8
25 mm Ø aluminium dome
2x 155 mm Ø
89 x 14.5 x 28.2
base plate: 2.5 x 21.5 x 30
14.00
black silk gloss
white silk gloss

2-way
bass reflex
100/150
38...38,000
3,100
86
4...8
25 mm Ø aluminium dome
2x 135 mm Ø
82.8 x 13.5 x 23.2
base plate: 2.1 x 20.5 x 25
11.00
black silk gloss
white silk gloss

2-way
bass reflex
60/90
48...38,000
2,100
86
4...8
25 mm Ø aluminium dome
155 mm Ø
29.4 x 15.5 x 25.7

5.1
black silk gloss
white silk gloss

2-way
closed
100/150
60...38,000
2,200
86
4...8
25 mm Ø aluminium dome
2x 135 mm Ø
14.5 x 41 x 25.2

6.38
black silk gloss
white silk gloss





ASCENT



Noble finish
available in black or white



Curved lines
and powerful volume



POWERFUL ELEGANCE

The ASCENT LE arrives with an impact: Thanks to generously dimensioned diaphragms, both the column and the shelf speakers play powerfully. With their musical sense, clarity, and distortion-free dynamics they convince in the highest as well as the lowest tones – from classic to rock music and also in a cinema sound setting.

Music in stereo becomes a true experience. As a finely-tuned loudspeaker series the ASCENT also masters the movies too in 5.1, moving you with an impressive sound, just like being at the movies.

The accurately combined ensemble therefore enables the ASCENT to be a totally universal series, yet with pinpoint precision and truth in whatever uses you have in mind for it. You can feel the exact matching in every detail. One look at the first-class manufacturing and the curved alignment will capture you.

The ASCENT LE family includes three column loudspeakers, one compact speaker, and one centre - available in black and white.

white
silk gloss

black
silk gloss

ASCENT IN THE TEST

stereo EXCELLENT
ASCENT 80 LE
sound level 62/100%
price/performance 4/5 stars -
excellent
stereo 02/2012 (GER)

AREA DVD OUTSTANDING
middle class
ASCENT 80 LE, ASCENT 20 LE,
ASCENT 10 BASE LE
Area dvd.de, 19. 08.2013 (GER)

HEIMKINO OUTSTANDIG
ASCENT 90 CLASSIC, ASCENT 20
CLASSIC, ASCENT 10 CLASSIC
BASE, SUB 88 DV
TESTRESULT OUTSTANDING 1,1
top class
Heimkino 4/5-2012 (GER)





SPECIFICATIONS

ASCENT

Type:

Principle:

Nom./music power (W):

Frequency response (Hz):

Crossover frequency (Hz):

Efficiency (dB/1W/1m):

Impedance (Ω):

Speaker

Tweeter:

Midrange:

Woofers:

Dimensions (HxWxD) in cm:

Weight (kg):

Finish:



90 LE

80 LE

70 LE

20 LE

10 LE BASE

3-way
bass reflex
160/220
28...46,000
330/2,700
89
4...8
25 mm Ø aluminium dome
135 mm Ø titanium-PP
2 x 180 mm Ø titanium-PP
106.6* x 22.5 x 33.5

3-way
bass reflex
140/200
29...46,000
350/2,800
89
4...8
25 mm Ø aluminium dome
135 mm Ø titanium-PP
2 x 170 mm Ø titanium-PP
100.6* x 20.84 x 34.5

3-way
bass reflex
100/150
30...46,000
300/2,600
88
4...8
25 mm Ø aluminium dome
170 mm Ø titanium-PP
170 mm Ø titanium-PP
95.6* x 20.31 x 31.5

2-way
bass reflex
60/90
40...46,000
2,700
86
4...8
25 mm Ø aluminium dome
-
135 mm Ø titanium-PP
30.9 x 17.65 x 27.0

3-way
closed
110/160
49...46,000
350/2,700
88
4...8
25 mm Ø aluminium dome
-
2 x 135 mm Ø titanium-PP
18.75 x 55.0 x 27.0

22.05
black silk gloss
white silk gloss

17.8
black silk gloss
white silk gloss

13.5
black silk gloss
white silk gloss

5.15
Black silk gloss
white silk gloss

8.55
black silk gloss
white silk gloss

* Dimension with base plate

* Dimension with base plate

* Dimension with base plate

DESIGN STATIV G optional



ARGENTUM



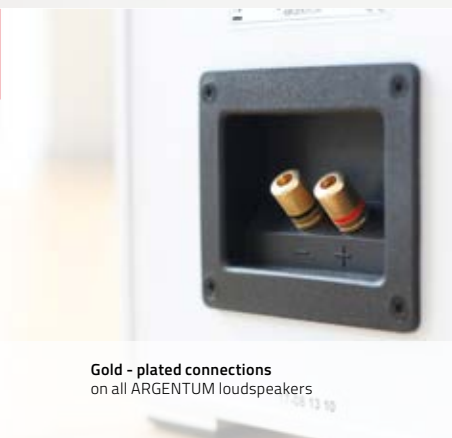
THE BLOSSOMING JOY OF SOUND

ARGENTUM offers the keys to more, for somewhat less. These are loudspeakers with an excellent price-performance ratio, where both attention to detail and our decades of audio mastery have been invested, with no corners cut, to deliver a product easily worthy of our quadral name and pedigree. Additionally, the easy-to-clean cabinet, and the appearance in a high-glossed front varnish with a colour-balanced front cover complete them perfectly.

Enjoy music at its origin, with the grace of the concert violin, the agitating riffs of the rock guitar, or the tough beats of a techno anthem. ARGENTUM is always at the height of the moment, in both, a pure stereo-combination and in a surround-setup. Their technical achievement makes them very versatile and leads them well beyond limits of others. An elaborated frequency switch clearly leads the way and provides a balanced and exemplary neutral sound due to the silk dome and its aluminium metalized conical diaphragm.



Super Audio Tweeter
protected by a solid bracket



Gold - plated connections
on all ARGENTUM loudspeakers

white
high gloss/décor

black
high gloss/décor

ARGENTUM IN THE TEST

HEIMKINO OUTSTANDING
ARGENTUM 490, ARGENTUM 430,
ARGENTUM 410 BASE und QUBE 10
TEST REVIEW OUTSTANDING 1,1
Top class
Heimkino 12/01-2014 (GER)

HiFi Test PRICE TIP
ARGENTUM 490
TOP CLASS
price/performance outstanding
Rating 1,2
price tip
HiFi Test 6/2013 (GER)

AREA DVD OUTSTANDING
ARGENTUM 450
Floorstanding loudspeakers
up to 500 Euro/each
AREA DVD 23.02.15 (GER)

HiFi Test OUTSTANDING
ARGENTUM 430
Upper class
price/performance outstanding
Grade 1,2
price tipp
HiFi Test 2/2015 (GER)

AUDIO RECOMMENDATION
ARGENTUM 490 (in the comparison test with 3 loudspeakers of 1000 €-class, 2 x 76 points, 2 x 77 points)
AUDIO sound valuation 77 points
PRICE/PERFORMANCE
VERY GOOD
AUDIO RECOMMENDATION:
BALANCED SOUND
AUDIO 05/2014 (GER)



AUDIO reader's choice 2015
ARGENTUM 490 (GER)

SPECIFICATIONS

35.000 HZ SUPER AUDIO TWEETER

quadral super-audio-tweeter delivers finely detailed highlights at high frequencies. The sound-absorbing material behind the fabric dome prevents the reflections from influencing the membrane from the rear. The true feature is the extremely small diaphragm mass which enables a break frequency of 35.000 Hz. The resulting fine resolution works with the requirements of the contemporary SACD and audio-DVD.



ARGENTUM

Type:
Principle:
Nom./music power (W):
Frequency response (Hz):
Crossover frequency (Hz):
Efficiency (dB/1W/1m):
Impedance (Ω):

Speaker	Tweeter:
	Midrange:
	Woofers:

Dimensions (HxWxD) in cm:
Weight (kg):
Finish:

* dimensions with feet



490

470

450

430

420

410 BASE

3-way
bass reflex
140/200
28...35,000
240/3,000
90
4...8
25 mm Ø silk dome
135 mm Ø
2 x 180 mm Ø
106.0* x 18.5 x 34.5
19.74
black
white

3-way
bass reflex
110/170
30...35,000
500/2,600
89
4...8
25 mm Ø silk dome
180 mm Ø
180 mm Ø
96.0* x 18.5 x 29.0
15.12
black
white

3-way
bass reflex
100/150
32...35,000
800/2,000
88
4...8
25 mm Ø silk dome
155 mm Ø
155 mm Ø
86 x 16.5 x 25.0
10.92
black
white

3-way
bass reflex
80/120
40...35,000
350/2,700
87
4...8
25 mm Ø silk dome
135 mm Ø
180 mm Ø
49 x 21.2 x 28.0
8.85
black
white

2-way
bass reflex
60/90
45...35,000
3,000
87
4...8
25 mm Ø silk dome
-
155 mm Ø
31.0 x 16.5 x 25.0
4.5
black
white

3-way
closed
110/160
50...35,000
500/1,800
87
4...8
25 mm Ø silk dome
155 mm Ø
155 mm Ø
16.8 x 55.0 x 21.5
6.6
black
white

base plate
(HxWxD) in cm: 1,6 x 23,5 x 33

MAGIQUE

 Bluetooth®

 DOLBY
DIGITAL

Dolby and the Double-D-Logo
are registered trademarks
of the Dolby Laboratories

MORE SOUND FOR TV AND PC

MAGIQUE XL and MAGIQUE XS are sound decks that combine an elegant timeless design with contemporary, fully active, sound technology. The high-quality loudspeaker and amplifier match-up produces a breath-taking soundstage while providing clear speech intelligibility. With this feature, the MAGIQUE creates a cinema style atmosphere inside your living room. Music, from a smartphone, a PC, or a tablet can be played via Bluetooth also with highly accurate sound quality. Both MAGIQUES have an optical and a coaxial digital port as well as an analogue port – thus, a Bluray, a CD, and a DVD-player can be connected easily.

To complete the layout MAGIQUE XL and MAGIQUE XS are engineered with a Dolby® digital-decoder and a 'learning function', allowing you to operate your sound deck comfortably with the remote control of your TV.

MAGIQUE XL and MAGIQUE XS are available in black and white. The front cover for the massive aluminium front is magnetically fixed and always comes in the colour of the cabinet.

MAGIQUE XL

Type:	3-way, stereo	
Principle:	active tv-loudspeakers, closed	
Nom./music power (W):	6 x 20 6 x 25	
Frequency response (Hz):	50...25,000	
Standby:	yes	
Features:	Dolby® Digital, Virtual Surround, sound control, Soft-Limiter	
Ports:	optical and coaxial digital port, RCA stereo, Bluetooth®	
Speaker:	Tweeter	2 x 19 mm Ø silk dome
	Midrange	4 x 65 mm Ø
	Woofer	2 x 150 mm Ø
Dimensions (HxWxD) in cm:	10.4 x 60 x 36.3	
Finish:	black, white	
Weight (kg):	9.47	
Remote control:	infrared/IR-learning function	

MAGIQUE XS

Type:	2-way, stereo	
Principle:	active tv-loudspeakers, closed	
Nom./music power (W):	2 x 20 + 1x 25 2 x 25 + 1x 30	
Frequency response (Hz):	60...22,000	
Standby:	yes	
Features:	Dolby® Digital, Virtual Surround, sound control, Soft-Limiter	
Ports:	optical digital port, 3,5mm handle stereo, RCA stereo, Bluetooth®	
Speaker:	Tweeter	-
	Midrange	2 x 75 mm Ø ultra wideband
	Woofer	2 x 150 mm Ø (1x passive)
Dimensions (HxWxD) in cm:	7.8 x 45.7 x 31.5	
Finish:	black, white	
Weight (kg):	4.62	
Remote control:	infrared/IR-learning function	

MAGIQUE IN THE TEST

XS IN THE TEST



VIDEO TEST WINNER
quadral MAGIQUE
Test review: GOOD 75%
In the test: 5 sound-decks
Test review: 5x good
VIDEO 11/2013 (GER)

lite Magazin
quadral MAGIQUE
Rating 1,0
middle class
lite-magazin.de 10/13 (GER)

AREA DVD OUTSTANDING
quadral MAGIQUE XS
Active TV-loudspeakers
up to 400 Euro
areadvd.de 21.10.2014 (GER)



audiovision TEST WINNER
quadral MAGIQUE
AV-VALUATION good 79 of 100
sound-decks 450 to 600 Euro
audiovision 04-2015 (GER)

AUDIO TEST VERY GOOD
quadral MAGIQUE
Very good (85%)
AUDIO TEST 07/2013 (AT)

lite Magazin
quadral MAGIQUE XS
Rating 1,0
Entry level
lite-magazin.de 10/13 (GER)

more tests on www.quadral.com

Bottom side of MAGIQUE
with an integrated subwoofer



Thanks to the learning function you can operate MAGIQUE XL and MAGIQUE XS also comfortably with the TV-remote control.



Both MAGIQUE-models are fully active, witch leads to an impressive sound experience



RONDO ACTIVE



Operating elements of metal

THE ACTIVE EXPERIENCE

quadral RONDO is an active desktop monitor for highest aspirations of design, functionality, and sound performance. The compact, beautifully crafted wooden cabinet of the RONDO is lacquered in a high gloss black or white. The operating elements are made of solid aluminium.

The outstanding RiCom V tweeter and the titanium metalized 135 mm woofer are operated by a powerful 100W power amplifier and supply an enthralling sound reproduction.

Tablets, PCs, and smartphones can be connected with the RONDO via Bluetooth. A USB port with a soundcard feature allows the direct connection to your laptop or your PC, and can play your music database with the highest quality of sound. Additionally, the RONDO can be connected with a subwoofer through a separate port with an automatic high-pass switch.



Rear active electronic



RiCom V tweeter



SPECIFICATIONS

Type:	2-way active loudspeaker
Principle:	bass reflex
Power (W):	2 x 50/70
Harmonic distortion. (Klirr):	< 1%
Frequency response (Hz):	55...50,000
Ports:	Analogue RCA (stereo)
	Digital 1 x USB
	Bluetooth yes
Output: Sub Out	3.5 mm mono mini-handle, with a switched high pass filter
	135 mm Ø titanium-PP
Speaker:	Woofers RiCom V
	Tweeter RiCom V
Dimensions (HxWxD) in cm:	28 x 15 x 21,5
Weight (kg):	active: 4.52
	passive: 4.41
Finish:	black high gloss
	white high gloss

RONDO AKTIV IN THE TEST

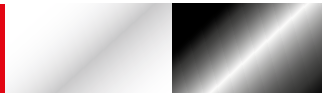
AUDIO TEST
 RESULT: VERY GOOD 85,5/100,
 price/performance: Excellent
 AUDIO TEST 01/2014 (AT)

lite Magazin
 quadral RONDO active
 Rating 1,1
 Upper class
 lite-magazin.de 01/14 (GER)

audiovision PRICE TIP
 av-valuation: VERY GOOD
 audiovision 05/2014 (GER)



white high gloss black high gloss



COMPACT LOUDSPEAKERS



PHASE



Terminal-port of PHASE 16
with an operating flip switch



Optionally and inclusive a wall mount
of MAXI 220W and 330W



Wall mount IP50
Inclusive



Table feet IP50
Inclusive

Often, a 5.1 set-up cannot be placed ideally into many living rooms or even home-cinemas due to availability of space. So to improve the feeling of the available space, you ideally work with a diffused sound field, like the quadral PHASE 16. Through a flip switch on the rear you can use the loudspeakers as dipole, as bipole, or just as standard speakers. For small rooms use the dipole-setting, because the two tweeters work in opposite phase and therefore provide a diffused sound-pattern. During the bipole mode, both tweeters are driven in-phase. In the standard position the PHASE 16 works like a direct radiator with only one tweeter. An ingenious engineered solution, from quadral.

PHASE 16

Type:	3-way
Principle:	closed
Nom./music power (W):	60/90
Frequency response (Hz):	47...22,000
Crossover frequencies (Hz):	2,700
Efficiency (dB/1W/1m):	86
For amplifier (Ω):	4...8
Speaker Tweeter:	2 x 25 mm Ø dome
Woofers:	135 mm Ø
Dimensions (H x W x D) in cm:	19.9 x 32.4 x 15.2
Weight (kg):	1.67
Finish	Cabinet:
	Covering:
	Finish:
	black high gloss
	white high gloss



MAXI

IPSO

She has got it all! The possibilities of her diversity are astonishing: In a double-pack as hi-fi loudspeakers for a stereo-system; or, in a five-pack as a centre, fronts and a rear satellites for surround-sound use. MAXI also loves the interaction with the active or passive subwoofer. On balance, a 'big small one' – and also in the pricing. MAXI is available in three sizes: as MAXI 440, MAXI 330 W, and MAXI 220 W. The two smaller models are delivered including a wall mount, which is also available for the 440 as an option.

The three models of the quadral IPSO series are the perfect loudspeakers for acoustic solutions both for indoor and outdoor areas of your home. Like the MAXI loudspeakers, they are also the perfect choice for background music in stores and guest rooms. A wall mount and table feet are, of course, included in this powerful, compact and stylish all-rounder. These loudspeakers can be played as stereo pair or combined with the active subwoofer as surround loudspeakers.

MAXI 440

2-way
bass reflex
100/150
47...24,000
2,800
87
4...8
13 mm Ø dome
135 mm Ø
24.5 x 15.5 x 17.2
3.64
aluminium-die-cast
metal grill
silver, black, white
stain resistant

excl. separate wall mount

MAXI 330 W

2-way
closed
100/150
50...24,000
3,000
87
4...8
13 mm Ø dome
120 mm Ø
20.0 x 13.2 x 13.2
2.27
aluminium-die-cast
metal grill
silver, black, white
stain resistant

incl. separate wall mount

MAXI 220 W

2-way
closed
80/130
55...24,000
3,500
86
4...8
19 mm Ø dome
120 mm Ø
13.2 x 13.2 x 13.0
1.94
aluminium-die-cast
metal grill
silver, black, white
stain resistant

incl. separate wall mount

IPSO 6

2-way
closed
70/140
65...22,000
2,800
88
4...8
25 mm Ø dome
180 mm Ø
32.85 x 21.84 x 19.1
3.1

black, white

incl. separate wall mount and
table feet

IPSO 5

2-way
closed
60/120
70...22,000
3,000
87
4...8
25 mm Ø dome
155 mm Ø
27.93 x 18.88 x 16.6
2.32

black, white

incl. separate wall mount and
table feet

IPSO 4

2-way
closed
50/100
80...22,000
3,000
86
4...8
25 mm Ø dome
135 mm Ø
24.15 x 16.17 x 14.3
1.7

black, white

incl. separate wall mount and
table feet



video reader's choice 2014
3. Place Category
Active-Subwoofer (GER)

SPECIFICATIONS

BASS THUNDERSTORM

Sound perfection. The low sound of a contrabass, the dark resonating beats of a kettle drum, the dull rumble of the storm, and often a resultant thunderous shake – it is often the subwoofer, which brings the experience to life. To render the low frequencies powerfully, membranes, cabinet, and electronics and their interplay were developed specifically for the job. A quadral subwoofer relieves the other speakers in the array, allowing them to then concentrate completely on the mid and high frequencies while the subwoofer drives that low end - with detailed precision, speed and depth.



Woofer QUBE 12



Woofer QUBE 7



Backside QUBE 8

Type:
Principle:
Nom./music power (W):
Frequency response (Hz):
Crossover frequencies (Hz):
Input sensitivity (mV):
Stand-by-control:
Phase:
Speaker woofer:
Dimensions (H x W x D) in cm:
Supply voltage (V):
Weight (kg):
Finish:

Chassis QUBE 12 with
powerful magnet





QUBE 12

QUBE 10

QUBE 8

QUBE 7

Active subwoofer
bass reflex, downfire
500/600
20...200
50...200 variable
250
<0.5 W
0/180°
320 mm Ø
50 x 40.4 x 49.3
115/230 ~ reversible
27.54
black high gloss
white high gloss

TEST WINNER

RESULT: VERY GOOD 76%
price/performance: very good
(in comparison: 4 subwoofer,
2x very good, 2x good)
video 09/2013 (GER)

more Tests at www.quadral.com

Active subwoofer
bass reflex, downfire
200/280
22...200
50...200 variable
250
<0.5 W
0/180°
260 mm Ø
42 x 32 x 39
115/230 ~ reversible
16.5
black high gloss
white high gloss

Test reviews see: PLATINUM M,
CHROMIUM STYLE, SIGNO & ARGENTUM

more Tests at www.quadral.com

Active subwoofer
bass reflex, downfire
100/130
30...200
50...200 variable
300
<0,5 W
0/180°
220 mm Ø
37.5 x 29 x 35
115/230 ~
11
black silk gloss
black high gloss
white silk gloss
white high gloss

TEST WINNER

RESULT: OUTSTANDING 1,1 – middle class
(in the test: 2 subwoofers, 1x outstanding
1,1, 1x excellent 1,2)
Heimkino 01 & 02/2013 (GER)

more Tests at www.quadral.com

Active subwoofer
bass reflex
70/100
33...150
50...150 variable
250
<0,5 W
0/180°
220 mm Ø
32.6 x 29.6 x 31.5
230 ~
8
baffle: black high gloss, white
high gloss
cabinet: black décor, white
décor





SURROUND SETS

Thrilling, fascinating, overwhelming – only the right sound transforms a movie into an exciting, true to life experience. You can arrange your individual surround-set from every quadral series. Furthermore, we offer illustrated package solutions with perfectly compatible components to assist you.

Satellite (Front/Rear/Center):

Principle (F/R/C):

Nominal power (W) (F/R/C):

Music power. (W) (F/R/C):

Frequency response. (Hz) (F/R/C):

For amplifier (Ω):

Cab. size (H x W x D) in cm:

Finish:

Subwoofer

Nom./music power (W):

Frequency range (Hz):

Crossover frequencies (Hz):

Dimensions (H x W x D) in cm:

Finish:



CHROMIUM SURROUND 2008

The elegant high gloss lacquered cabinet, in black or white, with exemplary engineering, combines contemporary styling with timeless solidity resulting in a set-up that offers excellent sound properties. The focus of the CHROMIUM SURROUND 2008 sets revolve around the 4 STYLE 20 loudspeakers. The QUBE 8 subwoofer provides deep basses and the optimised centre loudspeaker delivers outstanding speech quality. Also available without subwoofer as the CHROMIUM STYLE 5.0.

2-way/2-way/3-way
closed
60/60/100
90/90/150
51...46.000/51...46.000/51...46.000
4...8
20x13,3x17/20x13,3x17/13,3x34x17
black high gloss
white high gloss
active subwoofer, bass reflex, downfire (QUBE 8)
100/130
30...200
50...200, variable
37,5 x 29 x 35
black high gloss, white high gloss

OUTSTANDING

Multi-channel loudspeaker systems middle class
areadvd.de, 31.10.2012 (GER)



ARGENTUM 4000

The solid wooden cabinet, the finest chassis technology and the elaborate switches are the guarantors of low distortion and are key to expressing our love for fine, acoustic detail. Without any kind of discolouration the satellites play freely and openly with magnificent ease. The QUBE 7 being the perfect accompaniment when bass is required, setting off the dynamic accents with full volley. Friends of the movies will be impressed especially, that the ARGENTUM 4000 set provides a fully-fledged centre loudspeaker.

2-way/2-way/3-way
closed
50/50/90
80/80/130
65...25.000/65...25.000/65...25.000
4...8
17,54x12,5x13,8/17,54x12,5x13,8/12,5x31x13,8
black
white
active subwoofer, bass reflex (QUBE 7)
70/100
33...150
50...150, variable
32,6 x 29,6 x 31,5
black, white



ALUMA 2200

The quadral 5.1 loudspeaker system ALUMA 2200 requires little space, but it definitely demands attention thanks to its high quality aluminium cabinets. The shapely set includes four equal satellites for the front and surround, as well as a horizontally formatted centre.

The satellites are supported by the QUBE 7, which provides a massive low and high tone fundamental, being equipped with a 22cm woofer and 100W of music power.

2-way/2-way/2-way
closed
50/50/60
80/80/100
85...22.000/85...22.000/80...22.000
4...8
15,9x10,2x10,1/15,9x10,2x10,1/10,2x24,2x10,1
black anodized
white varnish
active subwoofer, bass reflex (QUBE 7)
70/100
33...150
50...150, variable
32,6 x 29,6 x 31,5
black, white

PRICEREFERENCE

5.1 LOUDSPEAKER SYSTEMS
areadvd.de, 10.12.2014 (GER)



FERRUM 7000



QUINTAS 6500

SURROUND SETS

The attractive design and the impeccable manufacturing of quadral's surround set, the FERRUM 7000, inspire everyone. The full-grown column speakers of the set are equipped with a 3-way subwoofer. The centre speaker convinces with high speech quality and sound-neutral music rendering, while the rear satellites deliver spectacular effects. Those who want to increase the remarkable bass presence can expand the set with the addition of the QUBE 7.

The combination of dynamic and fresh sound, a solid quality of manufacturing, and a simple but very elegant appearance offers a price-performance ratio well above average. Even without an additional subwoofer, the two woofers provide a powerful and voluminous sound because we integrated the two woofers inside the column loudspeakers. With a silk-dome tweeter, the QUINTAS 6500 system realizes an impressive frequency range up to 30,000 Hz.

Type (Front/Rear/Center):	3-way/2-way/3-way
Principle (F/R/C):	bass reflex/bass reflex/closed
Nominal Power (W) (F/R/C):	110/50/80
Music Power (W) (F/R/C):	170/100/120
Frequency response (Hz) (F/R/C):	28...25,000/55...25,000/55...25,000
Crossover frequency (Hz) (F/R/C):	120/3,200, 3,100, 2,800
Efficiency (dB/1W/1m) (F/R/C):	89/87/87
For amplifier (Ω):	4...8
Speaker	
Tweeter (F/R/C):	25 mm Ø dome/ 19 mm Ø dome/ 19 mm Ø dome
Midrange (F/R/C):	2 x 155 mm Ø/-/-
Woofer (F/R/C):	220 mm Ø/ 115 mm Ø/ 2x 115 mm Ø
Dimensions (H x W x D) in cm (F/R/C):	105* x 18.8 x 31.3/24 x 15.5 x 19.5 /14.8 x 41.8 x 19.5
Weight (kg) (F/R/C):	16.42/2.8/4.0
Finish:	black white

Type (Front/Rear/Center):	3-way/2-way/2-way
Principle (F/R/C):	Bass reflex/closed/closed
Nominal Power (W) (F/R/C):	140/60/90
Music Power (W) (F/R/C):	280/120/160
Frequency response (Hz) (F/R/C):	26...30,000/50...30,000/50...30,000
Crossover frequency (Hz) (F/R/C):	500/3,200, 3,500, 3,500
Efficiency (dB/1W/1m) (F/R/C):	90/83/85
For amplifier (Ω):	4...8
Speaker	
Tweeter (F/R/C):	25 mm Ø dome/ 25 mm Ø dome/ 25 mm Ø dome*
Midrange (F/R/C):	150 mm Ø/-/-
Woofer (F/R/C):	2x 180 mm Ø/ 150 mm Ø/ 2x 150 mm Ø*
Dimensions (H x W x D) in cm (F/R/C):	90 x 21 x 31.2/32 x 17.5 x 18.9 /17.5 x 55 x 18.9
Weight (kg) (F/R/C):	15/3/4.77
Finish:	black

* Dimensions with feet

base panel floor standing loudspeakers: 2,0 x 26,5 x 30 cm

* shielded

All loudspeakers
are available
individually



QUINTAS 5000

Attractive design, flawless manufacturing: quadrals surround-set QUINTAS 5000 II is a pleasure for eyes and ears. With their fresh dynamic, as well as the tonal balance it becomes a pure joy. To smart spenders an ideal combination for high-quality music and movie rendering. The full-grown floorstanders of the set provide a remarkable bass volume, so there is no need for a subwoofer.

3-way/2-way/2-way
bass reflex/bass reflex/closed
120/65/80
240/130/160
28...22,000/50...22,000/60...22,000
1,500/3,500, 3,500, 3,500
89/84/86

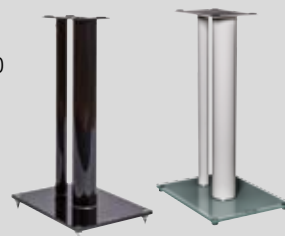
4...8
25 mm Ø dome/ 19 mm Ø dome/ 19 mm Ø dome
100 mm Ø/-/-
2x 170 mm Ø/ 130 mm Ø/ 2x 100 mm Ø
85 x 20 x 21/26 x 18 x 21 /13.8 x 43.5 x 21
9.5/3/4.3
black

All loudspeakers available individually.

ACCESSORIES

DESIGN STATIV G

Loudspeaker stand
HxWxD: 59.0 x 27.5 x 37.0
6.7 kg
black
white
Glass, Metal



for AURUM ALTAN,
AURUM MEGAN, PLATINUM M20, M25,
CHROMIUM STYLE 2, SIGNO AVANTGARDE 20,
RHODIUM 200, ARGENTUM 430

MOUNT 210

Wall mount
HxW: 9.4 x 2.0
32 g
black, white



horizontal/vertical adjustable
legally protected
for ALUMA 2200

MOUNT 180

Wall mount
HxW: 8.0 x 7.0
152 g
Silver grey



With universal joint
for MAXI 330 W, 220 W

STATIV H

Loudspeaker stand
HxWxD: 69.2 x 22.0 x 29.0
3.6 kg
black
white



for ARGENTUM 420,
Quintas 101 II,
QUINTAS 5000 R,
FERRUM 7000 REAR,
RHODIUM 200

MOUNT 400

Wall mount
HxW: 10.4 x 5.9
240 g
Silver grey



With universal joint
for MAXI 440, 330 W,
STYLE 20, STYLE 5 BASE,
SURROUND 2008

Connect with quadral!

Product innovations, test reviews, events – download the quadral NEWS App to provide you with all the latest information direct to your smartphone.

Available for Android™ and iOS™ devices.



WE ARE MEMBER OF THE:

 **HIGH END SOCIETY**
www.highendsociety.de



GERMANY

quadral GmbH & Co. KG
Am Herrenhäuser Bahnhof 26-28
D-30419 Hannover

Phone: +49 (0) 511-79 04 - 0
Fax: +49 (0) 511-79 04 - 444
E-Mail: export@quadral.com



www.quadral.com



facebook.com/quadralhifi



youtube.com/quadralhifi

Distribué en France par ConceptAs (www.conceptas.fr)

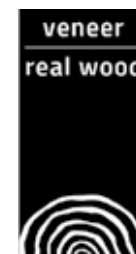
Email : contact@conceptas.fr

Contact Commercial : +33 6 07 72 63 18

List of local distributors at www.quadral.com

All proper names are registered and protected in favour of the company quadral®. We reserve the right to make technical changes without prior notification.

Picture credits: Page 4, 10, 12, 14, 18, 23, 27, 32 (photocase.de); Page 20 (time/photocase.de); Page 34 (bonsai/photocase.de); Page 3, 41 (Lucton/photocase.de); Page 37 (Franziska Fiolka/photocase.de); Page 42 (nicolasberlin/photocase.de); Page 43, 63 (cydonna/photocase.de); Page 45, 50, 54, 59 (simonthon.com/photocase.de); Page 47 (Carolinchen./photocase.de); Page 49 (una.knipsolina/photocase.de); Page 62 (Yarik/photocase.de); Page 64 (Patzita/photocase.de); Page 16, 57 (fotolia.com)



Our products do not include any wood from endangered tropical tree species