

# TASKalfa 400ci

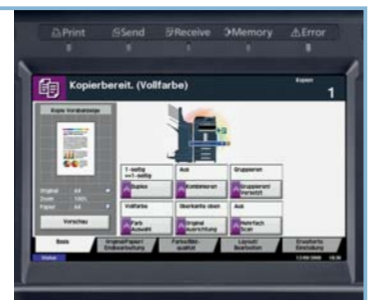
► print ► copy ► scan ► fax

## A MULTIFUNCTIONAL OFFICE TOOL DESIGNED TO EXPAND YOUR CAPABILITIES

As your business grows, so does the number of office tasks. The TASKalfa 400ci is a highly versatile multifunctional, engineered to take current and future demands in its stride. It works with impressive speed to deliver truly brilliant printouts and scanned documents, and its long-life components ensure exceptional reliability.

- Up to 40 pages per minute in colour and monochrome
- New KYOCERA micro spherical toner and colour technology delivers superior image quality while using less toner
- Duplex unit as standard for double-sided printing
- Colour touch panel
- 2,048MB RAM + 160GB HDD
- Optional single-pass double-sided scanning
- Long-life components for low running costs
- Innovative design

The colour touch panel features easy-to-use intuitive menus.



For high-volume printing, an optional paper cassette provides a paper capacity of up to 4,100 sheets.





With exceptional productivity, high reliability and low total cost of ownership the TASKalfa 400ci is designed for the most demanding office environments. The TASKalfa 400ci continues Kyocera's long-standing commitment to developing office solutions that offer environmentally sustainable and energy saving features without compromising on productivity.

## General

### Technology

KYOCERA Laser Colour

### Engine speed

Up to 40/19 pages per minute A4/A3 in colour/monochrome

### Resolution

600 x 600dpi

Multi-bit technology for print quality of up to 9,600dpi level x 600dpi

### Warm-up time

Approx. 45 seconds or less from power on

### Time to first page

Approx. 5.3 seconds or less in monochrome

Approx. 6.9 seconds or less in colour

### Dimensions (W x D x H)

Main unit: 605mm x 680mm x 745mm

**Weight** Main unit: approx. 106 kg

**Power source** AC 220 V – 240 V, 50/60 Hz

### Power consumption

Printing: 1,150 W

Stand-by: 210 W

Power saving (ECOpower): 19 W

### Noise (ISO 7779 / ISO 9296)

Printing: 70 dB (A)

Stand-by: 56.9 dB (A)

### Safety standards

GS, TÜV, CE certified

This unit is manufactured according to ISO 9001 quality standard and ISO 14001 environmental standard. RoHS compliant.

## Paper handling

All paper capacities quoted are based on paper thickness of max. 0.11 mm. Please use paper recommended by KYOCERA under normal environmental conditions.

### Input capacity

Max. 100-sheet multi-purpose tray, 60–220 g/m<sup>2</sup>, A3–A6R; Max. 2 x 500 sheet universal paper cassette, 60–163 g/m<sup>2</sup>, A3–A5R; Max. input capacity with options: 4,100 sheets A4

### Duplex unit

Duplex as standard, supporting A3–A5, 60–163 g/m<sup>2</sup>

### Output capacity

250 sheet face-down

## Print functions

**CPU** PowerPC750GL @ 750 MHz

**Memory** 2,048MB RAM + 160GB HDD

### Interfaces

#### Standard interface

USB 2.0 (Hi-Speed), Fast Ethernet 10-Base-T/100Base-TX, CF slot

**Controller language** Prescribe

**Emulations** PCL6, KPD L 3 (PostScript 3 compatible), XPS Direct Print, PDF Direct Print

### Operating Systems

All current Windows operating systems, Mac OS X Version 10.2 or higher, UNIX LINUX, as well as other operating systems on request.

## Fonts / barcodes

93 outline fonts (PCL6), 8 fonts (Windows Vista), 136 PostScript KPD L 3 fonts, 45 types of one-dimensional barcodes plus two-dimensional barcode (PDF-417) Downloadable fonts: KYOCERA, PCL + TrueType format, Type 1 + 3 format

## Print features

Quick copy, proof and hold, private print, job storage and job management functionality

## Copy functions

**Max. original size** A3

**Continuous copying** 1–999

**Memory capacity** 2,048 MB RAM + 160 GB HDD

**Zoom range** 25–400% in 1% steps

**Preset magnification ratios** 5R / 5E

### Digital features

Scan-once-copy-many, electronic sort, 2in1 and 4in1 function, image repeat copy, page numbering, cover mode, booklet copy, 160GB document box, interrupt copy, form overlay

**Exposure mode** Auto, manual: 7 or 13 steps

**Image adjustments** Text + photo, text, photo, map

## Scan functions

### Functionality

Scan-to-PC, scan-to-email, scan-to-FTP (FTP via SSL), network TWAIN, scan-to-SMB, scan-to-box, scan-to-USB

### Scan speed

100 images per minute (A4, colour, monochrome), (300 dpi with DP-760)

### Scan resolution

600 dpi, 400 dpi, 300 dpi, 200 dpi, 200 x 100 dpi, 200 x 400 dpi, (256 greyscales)

**Max. scan size** A3

### Original recognition

Text, photo, text + photo, OCR

**Interface** 10/100 Base-TX

**Network protocol** TCP/IP

### File types

PDF (high compressive/encrypted), JPG, TIFF, XPS

## Fax functions

**Compatibility** ITU-T Super G3

**Modem speed** Max. 33.6 kbps

**Transmission speed** Max. 2 seconds (JBIG)

### Scanning density

Normal: 8 dot/mm x 3.85 line/mm

Fine: 8 dot/mm x 7.7 line/mm

Superfine: 8 dot/mm x 15.4 line/mm

Ultrafine: 16 dot/mm x 15.4 line/mm

(with optional memory), halftone

**Max. original size** A3

**Compression method** JBIG, MMR, MR, MH

**Memory** Standard 12 MB, max. 120 MB

### Features

Optional Internet-fax, network faxing, rotate transmission, rotate reception, duplex fax reception, memory reception, mailbox, remote diagnostics, dual scan with second fax system

## Consumables

### TK-855K Toner-Kit

Toner Black for 25,000 pages with 5% coverage A4

### TK-855C, TK-855M, TK-855Y Toner-Kits

Toner Cyan, Magenta, Yellow for 18,000 pages with 5% coverage A4

## Options

### Fax System (Q)

### Internet Fax Kit (A)

### Paper handling

**DP-750 Document processor** (Reversing document processor), Max. 100 sheets, 45–160 g/m<sup>2</sup>, A3–A5R, folio

**DP-760 Document processor** (One-path duplex scanning) Max. 100 sheets; 45–160 g/m<sup>2</sup>; A5R–A3, folio

**PF-720 Paper feeder** Max. 2 x 500 sheets, 60–163 g/m<sup>2</sup>, A5R–A3, folio

### PF-760 Paper feeder

Max. 3,000 sheets, 60–163 g/m<sup>2</sup>, A4, B5, letter

### DT-710 Document tray

### DF-760\* Document finisher+ AK 720

Main tray: max. 3,000 sheets A4; 60–220 g/m<sup>2</sup>; A3–B5

Sub tray: max. 200 sheets A4; 60–163 g/m<sup>2</sup>; A3–A6R

Sub tray (top) max. 50 sheets; 60–163 g/m<sup>2</sup>; A4

Stapling up to 50 sheets A4 or 30 sheets A3 at 3 positions, A3–B5

### DF-780\*\* Document finisher

Max. 1,000 sheets A4, A3–B5E, 64–105 g/m<sup>2</sup>, 3 positions

stapling up to 50 sheets A4 or 20 sheets A3

### PH-5C/PH-5D Punch unit for DF-760

2-hole/4-hole/Swedish type, 60–200 g/m<sup>2</sup>, A5R–A3

### MT-720 Mailbox sorter for DF-760

7 bins x max. 100 sheets A4, 50 sheets A3/B4, 60–163 g/m<sup>2</sup>

### BF-720 Booklet unit for DF-760

max. 64 pages (16 sheets) booklet folding and stapling

60–80 g/m<sup>2</sup>, A3, B4, A4R, cover sheet 60–163 g/m<sup>2</sup>

### JS-720 Job separator

100 sheets internal job separator, 60–163 g/m<sup>2</sup>, A3–A5R

(60–220 g/m<sup>2</sup> to finisher)

\*Adapter Kit AK-720 and JS-720 are required for the use of DF-760.

\*\* JS-720 is required for the use of DF-780.

## Memory

### CompactFlash® card

1 slot (up to 4 GB) for printing forms, fonts, logos, macro storage

### Fax Memory

**MM-16-128** Image memory (120 MB)

## Security

### Data security kit (E)

ISO 15408 (Common Criteria) with security level EAL3

## Printed Document Guard Kit (A)

### Optional interface

**PS159:** Wireless LAN (802.11b/g)

### PS1109 Gigabit Ethernet:

10BaseT / 100BaseTX / 1000BaseT (RJ-45)

**PS129 Fibre Optic:** 100BaseSX (SC)

**PS1129 Gigabit Fibre Optic:** 1000BaseSX (SC)

## Others

### Platen cover (E)

**CB-720** Wooden cabinet

**CB-721** Metal Cabinet



Product depicted includes optional extras.

## Your Kyocera Business Partner

KYOCERA MITA(UK) Ltd, 8 Beacontree Plaza, Gillette Way, Reading RG2 0BS  
Tel 0118 9311 1500, FAX 0118 9311 108  
www.kyoceramita.co.uk, info@kyoceramita.co.uk

\* KYOCERA does not warrant that any specifications mentioned will be error-free. Specifications are subject to change without notice. Information is correct at time of going to press. All other brand and product names may be registered trademarks and their respective holders and are hereby acknowledged.

