

Fig. 1. Overview of the T.Arc.H.N.A. System, created by Piero Mussio

Fig. 2. Base of an Etruscan black-gloss vessel from Cetamura with siglum of X. After de Grummond, Bare and Meilleur 2000, fig. 4.

Fig. 3. Cooking pan from Cetamura with siglum of “tree” type. After de Grummond, Bare and Meilleur 2000, fig. 10.

Fig. 4. Etruscan black-gloss fragment with siglum of combined letters (?).After de Grummond, Bare and Meilleur 2000, fig. 11.

Fig. 5. Database of sigla combined with alphabets. After Bagnasco Gianni, Gobbi and Scoccimarro, forthcoming, fig. 3.

Fig. 6. Etruscan drinking cup with sigla combined with an alphabet. After Bagnasco Gianni, Gobbi and Scoccimarro, forthcoming, fig. 5.

Fig. 7. Map showing distribution of sigla combined with an alphabet. After Bagnasco Gianni, Gobbi and Scoccimarro, forthcoming, fig. 7.

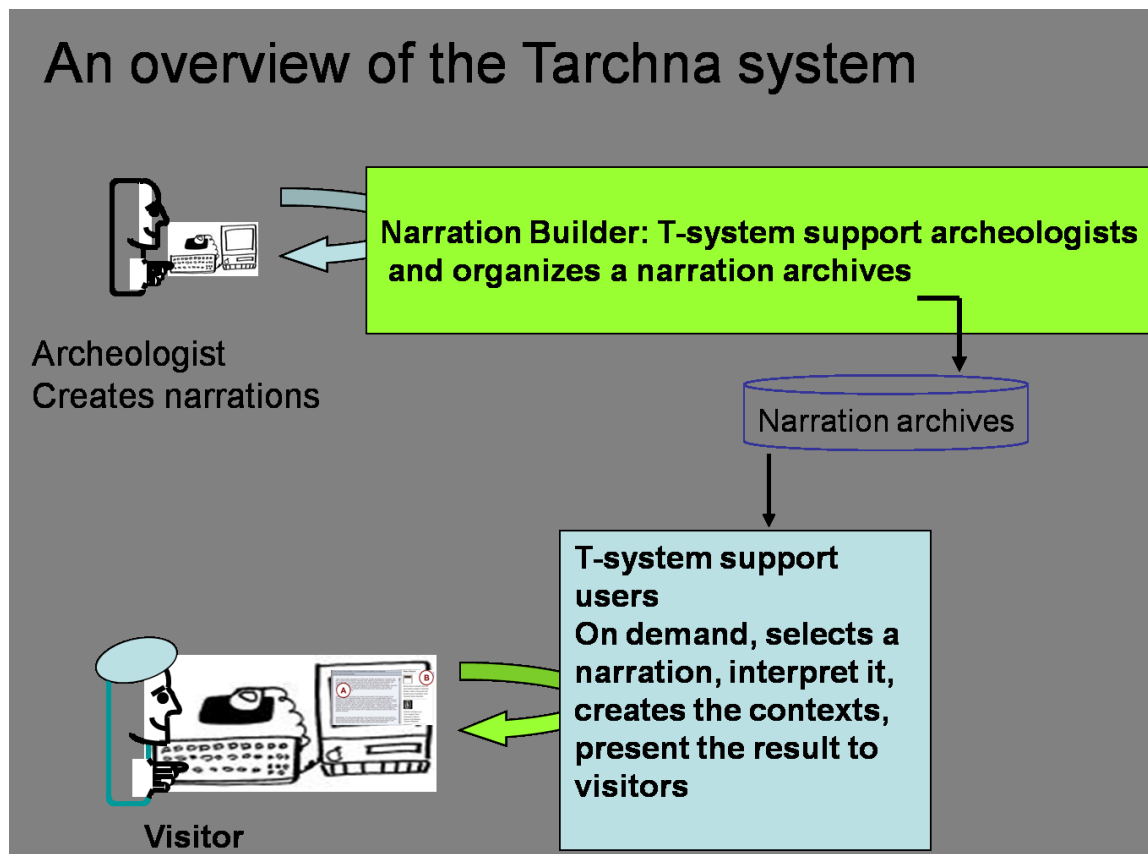


Figure 1: Overview of Tarchna System

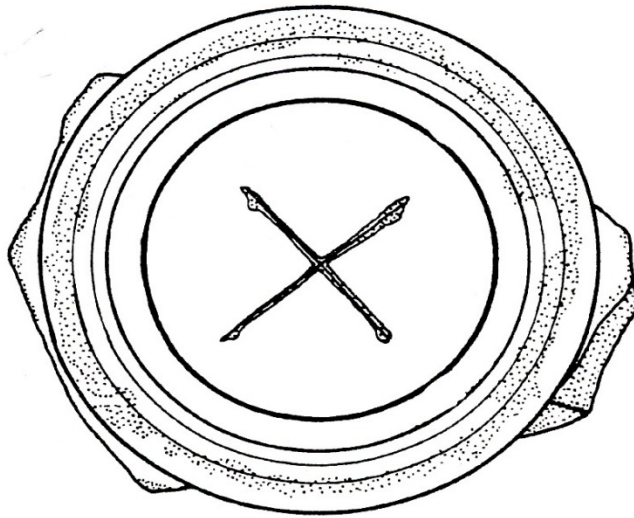
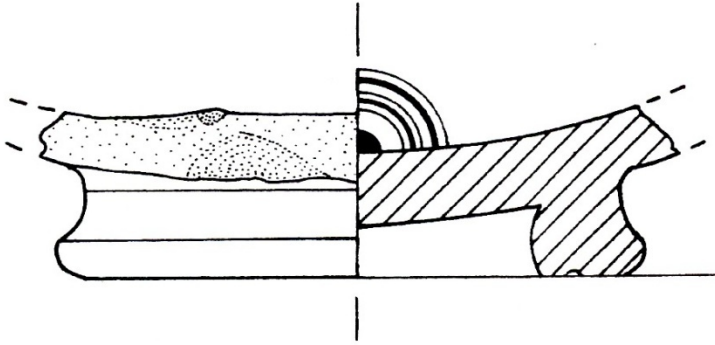


Fig. 4. Base of an Etruscan black-glass vessel from Cetamura (inv. A993p), with siglum of X. Third to second century b.c.

Figure 2: Base of Etruscan Black Gloss Vessel

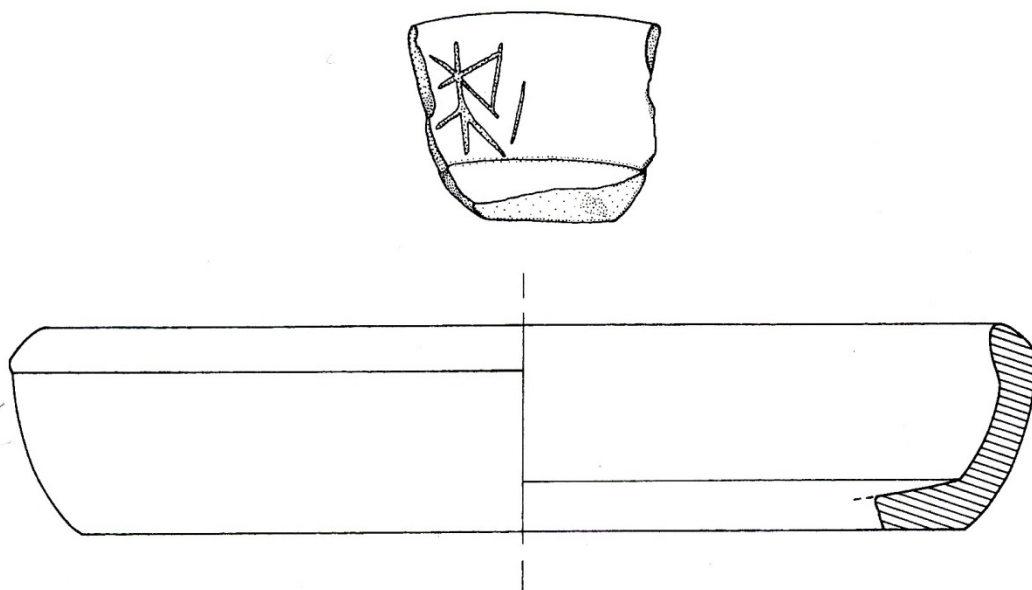


Fig. 10. Etruscan flat-bottomed cooking pan, from Cetamura (inv. T961), with siglum. Hellenistic period.

Figure 3: Cooking Pan from Cetamura

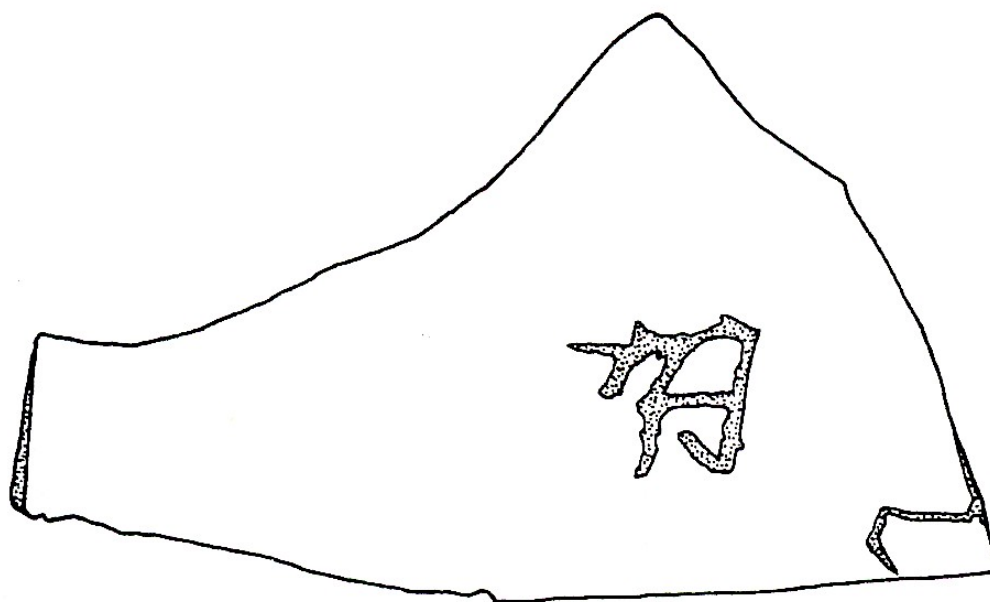


Fig. 11. Fragment of unidentified black-gloss vessel from Cetamura (inv. I54p) with siglum. Third to second century b.c.

Figure 4: Etruscan Black Gloss Fragment

| Bibliografia | /2/ | /4/ | /6/ | /8/ | cerchio | tridente | legatura | segno alfabetico | alfabetico | testa | intorno | simmetria | 1 quarto | 2 quarti | 3 quarti | 4 quarti | rapporto/ supporto | provenienza | condizio | supporto | cronologia |
|----------------|-----|-----|-----|-----|---------|----------|----------|------------------|------------|-------|---------|-----------|----------|----------|----------|----------|--------------------|---------------------------------------|----------|----------------|-------------------|
| CIE8709a | | | | | | X | | | X(A,CE) | | | | | | | | intorno | Suessula (Zocca Calabrese) | Pinibre | Coppa v.n. | 480-470 |
| CIE8709b | | | | | | | | | | X | | | | | | | esterno | | | | |
| CIE8728a | X | | | | | | | X(A) | X | | | | X | X | X | | esterno | Nola | Pinibre | Coppa v.n. | 500-450 |
| CIE8728b | X | | | | X | | X | | | | | | | | | | intorno | | | | |
| CIE8834 | | | | | | | | | X(A,CE,V) | X | | | X | X | X | X | esterno | Paucicagnano (Pestini) | Pinibre | Coppa buchi. | 530-500 |
| CIE8840 | | | | | | X | | | X(A,CE) | | | | | | | | esterno | Paucicagnano (Ricciamonte) | Pinibre | Coppa buchi. | 530-500 |
| CIE10935 | X | | | | | | | | X(A,C) | X | | X | X | | X | | esterno | Ono (Lepine) | Pinibre | Coppa buchi. | 530-450 |
| CIE11438 | X | | | | | | | | X(A,*) | | | | X | | | | esterno | Talamone, colle Talamonaccio | | Peso da tekhio | III-II sec. |
| CIE11492 | X | | | | | | | | X(A, X) | | | | X | | | | esterno | Talamone, colle Talamonaccio | | Peso da tekhio | III-II sec. |
| CIE11676 | X | | | | | | | | X(C,A) | | | | X | X | | | esterno | Koselle, mura Bocca di N. tempio | | Peso da tekhio | Da ellenistica |
| CIE11855 | | | | | | X | | | X(V,A) | | | | X | | | | esterno | Koselle, mura mura W, scudina e sigf. | Abisko | Coppa v.n. | II sec. |
| CIE11980 | X | | | | | | | | X(A, C) | | | | X | X | | | esterno | Koselle, Campo la Valle | | Peso da tekhio | non def. |
| RDE XXXVIII, 3 | X | | | | | | | | X(AE) | | | | X | | | | esterno | Massumea, S. Rocchino | Sarno? | Coppa buchi. | Fine VII- VI sec. |

Fig. 3 : Tabella Gruppo Alfabetari, parte 1.

Figure 5: Database of Sigla Alphabets

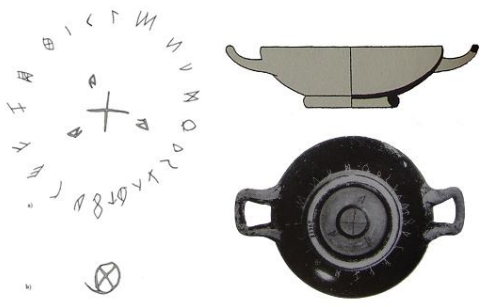


Fig. 5 : Nola, alfabetario (CIE 8728).

Figure 6: Etruscan Drinking Cup



Fig. 7

Figure 7: Map Showing Distribution of Sigla Alphabet