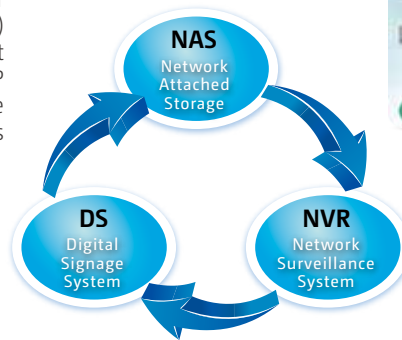


## • QNAP gives you the best one !

QNAP Systems, Inc., as its brand promise "Quality Network Appliance Provider", aims to deliver a comprehensive range of cutting-edge network attached storage (NAS), network video recorder (NVR) and Digital Signage Total Solution (DS) solutions that are easy-to-use and provide robust operation and trustworthy reliability. QNAP integrates technologies and designs to create quality products that effectively improve business efficiency.



## • Why QNAP Digital Signage solution ?

*Various design template provided  
(For QNAP Signage Station Only)*



*HTML 5 content solution  
(For QNAP Signage Station Only)*



**NOTE:**

All registered trademarks mention here belong to their respective owners.

*Versatile file format supported*



*Multi screen solution*



*Remote management for devices and contents*

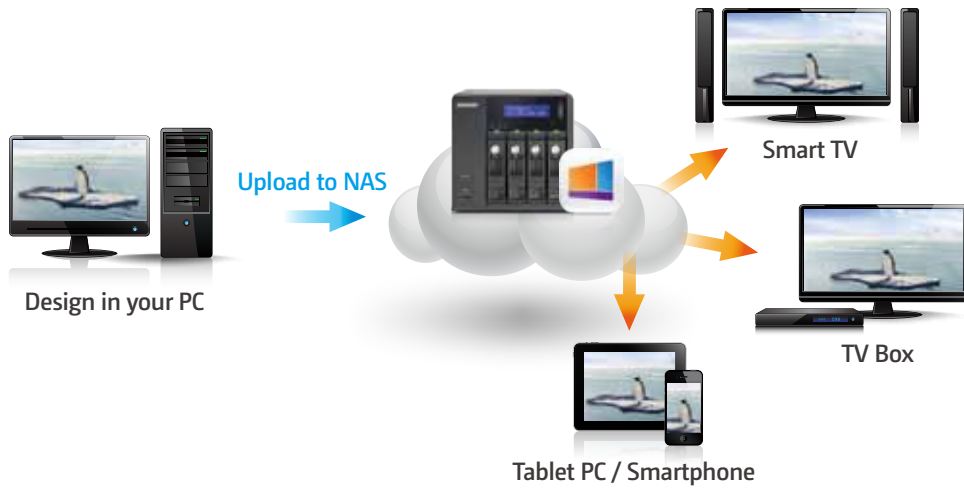


*Free software and license extension*

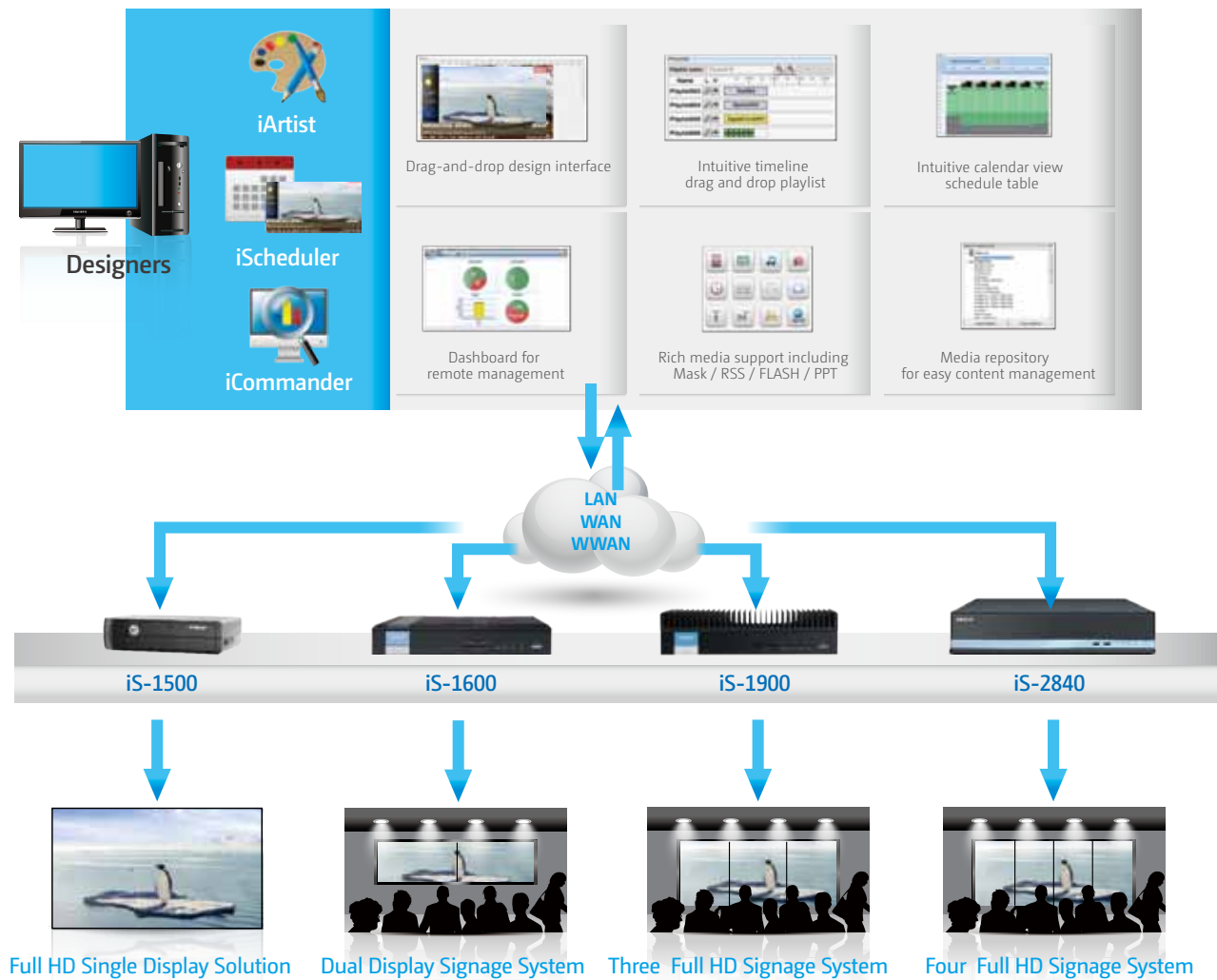


# • How it works ?

QNAP Signage Station (A free APP provided by QNAP Turbo NAS)



## iSignager Digital Signage Total Solution



## • One store for all



## • Features of iSignager software

### *iArtist*

iArtist is a powerful and flexible layout design tool. It enables users to design a multi-zone layout and define file playback sequences, timing, and transition effects. In addition, users can use the intuitive drag-and-drop operation to create their own templates or layouts. The timeline view lets users define playlists intuitively.



### *iScheduler*

iScheduler is a full-range scheduling tool for both simple and complex layouts playback. It supports hourly, daily, weekly and monthly-based scheduling with several scheduling templates provided for users' convenience. Users can easily create schedules by putting their desired layouts into time slots, drag-and-drop items with its determined playback length into the calendar view slots. To set further precise time schedule for some particular playback loop is also available. Simply right clicking the time slot, a detailed property setting dialog box will pop out for user's quick and needed setting.



### *iCommander*

iCommander provides easy administration for simultaneous remote monitoring of multiple players, including an easy-to-use dashboard interface. It provides essential information for routine checks.

#### Dashboard:

Building a digital signage network yet without a remote managing platform can't be called a complete solution. Dashboard presents the overall status of all remote players for users' easy and quick administrating in minutes. It allows non-technical users by only taking their minimal input, yet effectively controlling the entire remote digital signage system. No on-site management effort is required which particularly save hidden management cost for owner's benefits.

#### Player status:

The player status provides real-time information of each remote player, such as registration, IP, MAC address, current layout and last heartbeat. If necessary, users can do remote trouble-shooting without taking any on-site human managing effort or even traveling to the player site in person.

#### Player monitor:

It provides a summary of each selected player's for their current status and detailed configurations.

#### Command task:

Enable users to send commands to each selected player to order its Schedule ON/OFF, Screen ON/OFF or add/remove some particular media object in time of need.

#### Log viewer:

It records each player's running footprints. System information and its playback related status can be all found in log viewer.

#### Publish status:

While users publish the set playlist to player, a progress bar will be presented to keep users noted about the on-going publishing status.



# • What can iSignager do ?

*Multi screen with multi-media content design available*

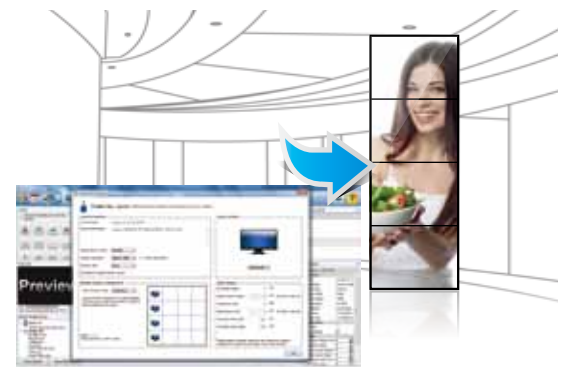


*Remote player management, power management*



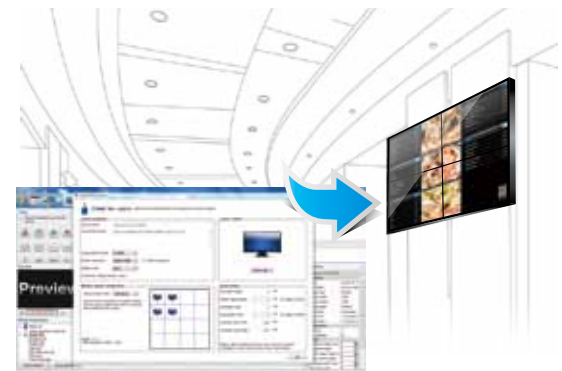
*iS-2840 4K2K Video Wall Solution*

*Calendar-view easy scheduling for everyday, weekly and monthly*



*iS-2840 4K2K Digital Menu Board*

*Remote publishing an instant message, urgent cast, or update a new schedule*



*iS-2840 4K2K Information Board*



# Product Comparison



	iS-1500	iS-1600	iS-1900	iS-3620	iS-2820	iS-2840
Standalone Software	iSigner (iArtist, iScheduler, iCommander) Support Windows Vista, Windows 7, Windows 8 32-bit and 64-bit version					
Local Storage	SD card * HDD	mSATA	mSATA	mSATA	2.5" SATA HDD	2.5" SATA HDD
Local Storage (update only)	USB 2.0 flash drive, support FAT32 and NTFS					
Portrait Mode	N/A	Yes	Yes	Yes	Yes	Yes
Video Wall Support	iVW controllers compliant					
Playlist	Time period, daily, weekly					
Video	Files: MPEG, MP4, WMV9, FLV, MJPEG, AVI Codec: MPEG1, MPEG2, MPEG4, H.264, VC-1 External input: RTSP streaming					
Image	BMP, JPG, JPEG, JPE, PNG (support transparency mask over video)					
Audio	MP3, AC3, AAC, WMA, WAV					
Flash	Flash 9	Flash 11	Flash 11	Flash 11	Flash 11	Flash 11
HTML	N/A	HTML files, MHT files, URL, RSS				
Banner	Text (static / RSS) with adjustable scrolling speed and direction					
Clock	Support multiple clock with both digital and analog format					
RSS Subscriber	Yes (HTML and banner zone)					
Power Point	Yes (convert to video)					
Digital Menu board widget	Yes					
Player Control	Schedule power ON/OFF		Power state recovery			
Monitor Control	Schedule ON/OFF by RS-232					
CPU	Sigma Designs SoC processor	Intel® Dual Core processor	Intel® Core™ i5 Processor	Intel® Core™ i5 Processor	Intel® Xeon® Processor E3 Processor	Intel® Core™ i7 Processor
Graphics	Sigma Designs SoC processor	Intel® HD Graphics	Intel® HD Graphics	Intel® HD Graphics	AMD Graphic card	AMD Graphic card
Video Output	1 x HDMI 1.3a	1 x DisplayPort 1 x DVI	2 x DisplayPort 1 x DVI	1 x JAE connector (OPS compliance) 1 x DisplayPort (external)	1 x HDMI 1.4	4 x miniDisplayPort (mini DisplayPort to DVI adapter included.)
Maximum Output Resolution	1920 x 1080 Video up to 1920 x 1080 (1080p)	DisplayPort: 1920x1080 DVI: 1920 x 1080	DisplayPort x 2 : 1920x1080 DVI: 1920 x 1080	DisplayPort: 1920x1080 JAE: 1920 x 1080	HDMI: 3840x2160	DisplayPort x 4 : 1920x1080 DVI: 1920 x 1080
Audio Output	1 x RCA L/R 1 x S/PDIF	1 x 3.5mm line-out	1 x 3.5mm line-out	1 x 3.5mm line-out	1 x RCA L/R	1 x RCA L/R
Storage	1 x 2.5" SSD (Optional) 1 x SDHC card slot	1 x mSATA slot	1 x mSATA slot	1 x mSATA slot	2 x 2.5" SSD (Optional)	2 x 2.5" SSD (Optional)
3G	N/A	N/A	N/A	Yes	N/A	N/A
LAN	1 x Realtek GbE controller	1 x Intel® GbE controller	1 x Intel® GbE controller	1 x Intel® GbE controller	1 x Intel® GbE controller	1 x Intel® GbE controller
WLAN	(optional) USB dongle, 802.11b/g/n, WEP/WPA/WPA2	(optional) 802.11b/g/n, WEP/WPA/WPA2	(optional) 802.11b/g/n, WEP/WPA/WPA2	(optional) 802.11b/g/n, WEP/WPA/WPA2	N/A	
USB	2 x USB 2.0	4 x USB 2.0 (2 front, 2 rear)	4 x USB 2.0 (2 front, 2 rear) 2 x USB 3.0	2 x USB 3.0	4 x USB 2.0 (2 front, 2 rear) 2 x USB 3.0	4 x USB 2.0 (2 front, 2 rear) 2 x USB 3.0
Serial	1 x RS-232	1 x RS-232	1 x RS-232	1 x RS-232	1 x RS-232	1 x RS-232
Watchdog	Internal hardware watchdog for error recovery					
Buttons	Power button, reset to factory default button					
Power	External power adaptor, 12VDC			12V ~19VDC		100~240V AC, 250W
Dimension (D x W x H mm)	188 x 134 x 76	267 x 160 x 45	267 x 160 x 65	200x119x30	430 x 420 x 88	430 x 420 x 88
Mounting	VESA 75	Wall mount	Wall mount	N/A	2U	2U
Operating Temperature	0°C to 45°C					
Certification	CE, FCC					

\* NOTE: HDD/SSD are optional upon project request.

Valid till Q3,2014

## QNAP Systems, Inc.

TEL : +886-2-2641-2000 FAX : +886-2-2641-0555

Address : 3F, No.22, Zhongxing Rd., Xizhi Dist., New Taipei City, 221, Taiwan

QNAP may make changes to specification and product descriptions at any time, without notice. Copyright © 2014 QNAP Systems, Inc. All rights reserved. QNAP® and other names of QNAP Products are proprietary marks or registered trademarks of QNAP Systems, Inc. Other products and company names mentioned herein are trademarks of their respective holders.

P/N: 51000-023500-RS  
201405 (ENG) B



# QNAP Digital Signage Solution



Signage Station (App) @QNAP Turbo NAS



iSignager Digital Signage Total Solution